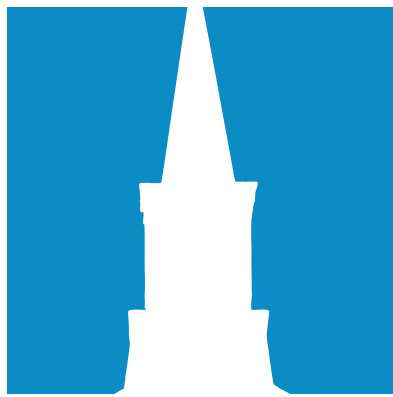


ENRICHING PLACE



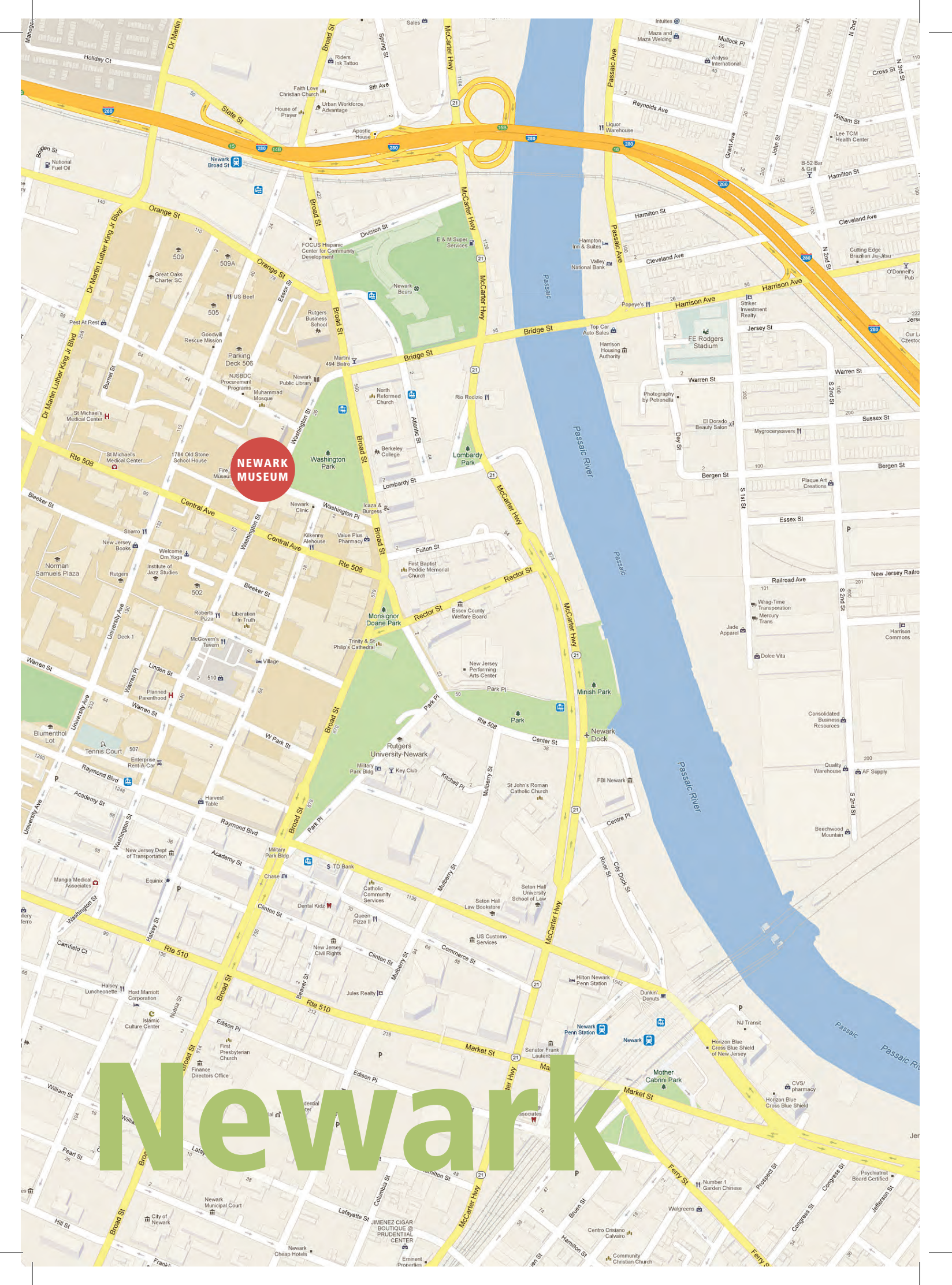
2013 NJ HISTORY AND HISTORIC PRESERVATION CONFERENCE

June 6, 2013 | www.njpreservationconference.org

NEWARK MUSEUM | NEWARK

**NEWARK
MUSEUM**

Newark



Welcome to the 2013 New Jersey History and Historic Preservation Conference at The Newark Museum!

Enriching Place, the theme of this first combined History and Historic Preservation Conference is an evocative phrase for New Jerseyans. After witnessing the power and destruction of Hurricane Sandy last year, we are all more aware of how important place is. How important landmarks are as repositories of our shared experiences. How we use buildings and sites from our history to map a road to our future.

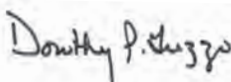
This year's program features author Tony Hiss who will speak to the idea and reality of place and how people experience it. His remarks will lead us into a full day of classroom sessions, tours, exhibits and workshops that will educate us about the details of preservation and accreditation, examine the necessity of disaster planning and recovery, and expand our understanding of special places in Newark, on the Raritan Waterfront and at the Statue of Liberty.

During the day please visit with the sponsors and vendors in the exhibit area. It is the sponsors' financial support for the History and Historic Preservation Conference that is vital in making this a self-supporting event.

Best wishes for a successful conference!



Richard E. Constable, III
Commissioner
Department of
Community Affairs



Dorothy P. Guzzo
Executive Director
NJ Historic Trust



Chris Perks, P.E.
Chair
NJ Historic Trust
Board of Trustees

ENRICHING PLACE

Conference Agenda

TIME	ACTIVITY	LOCATION
8:00 to 9:00 am	Conference Registration Breakfast <i>Vendor and Sponsor Exhibits Open</i>	<i>Engelhard Court</i>
9:00 to 10:15 am	Welcome and Plenary Session Keynote Speaker: Tony Hiss, author	<i>Auditorium</i>
10:45 am to noon	Choice of Educational Sessions:	
	S-1 Necessary Messes: Historic Mortar Recipes/Science and Art of Historic Plaster	<i>Small program room</i>
	S-2 Reclaiming Abandoned Properties: Innovative Tools for Reversing Community Disinvestment	<i>Large program room</i>
	S-3 Museums of Excellence: Standards and Practices for Organizations Large and Small	<i>Trustees Room (Ballantine House)</i>
	S-4 Retrofitting Historic Properties Against Flood Damage	<i>Auditorium</i>
	S-5 What Lies Beneath: Archaeology of the City	<i>Meyner Room (Ballantine House)</i>
	S-6 Newark Museum and its Neighborhood: A Legacy of Preservation, Reuse and New Design <i>Field Session/Walking Tour</i>	<i>Meet in front of the Gift Shop</i>
noon to 1:30 pm	Lunch Vendor and Sponsor Exhibits Open Poster Presentations Bookstore and Book Signing by Tony Hiss	<i>Engelhard Court/Gift Shop</i>
	Choice of Afternoon Workshops	
1:00 to 4:15 pm <i>Note: this tour leaves early</i>	W-5 The Olmsted Legacy in Branch Brook Park and the Forest Hill Historic District <i>Field Workshop/Trolley tour</i>	<i>Meet trolley outside main museum entrance at 12:45</i>
1:30 to 4:15 pm	W-1 The Morning After: Surviving Sandy and Preparing for the Next Natural Disaster	<i>Auditorium</i>
1:30 to 4:15 pm	W-2 Rehab Tax Credit Projects <i>Field Workshop/Bus Tour</i>	<i>Meet bus outside main museum entrance at 1:15</i>
1:30 to 4:15 pm	W-3 Marrying Development and Preservation in Downtown Newark <i>Field Workshop/Walking Tour</i>	<i>Meet guide outside museum entrance at 1:30</i>
1:30 to 4:15 pm	W-4 Newark Through the Ages <i>Field Workshop/Bus Tour</i>	<i>Meet bus outside main museum entrance at 1:15</i>

TIME	ACTIVITY	LOCATION
1:30 to 2:45 pm	Choice of Educational Sessions S-7 The Edison Memorial Tower and Meridian Hill Park: Restoration of John J. Earley Mosaic Concrete	<i>Meyner Room (Ballantine House)</i>
	S-8 Public Participatory Geographic Information System (PPGIS): Empowering Historic Preservation Planning	<i>Small program room</i>
	S-9 A Leadership Case Study of the Northeast African American Historic Places Outreach Program	<i>Trustees Room (Ballantine House)</i>
	S-10 Best Practices for Historic Preservation Commissions	<i>Large program room</i>
3:00 to 4:15 pm	Choice of Educational Sessions S-11 A New Strategy for Access and Egress at the Statue of Liberty	<i>Trustees Room (Ballantine House)</i>
	S-12 Take me to the River: Rediscovering the Raritan Riverfront	<i>Large program room</i>
	S-13 There's an App for That: Today's Technology and Heritage Tourism/Interpretation	<i>Small program room</i>
	S-14 Digging Around the House: Using Archeology to Plan, Promote, Preserve, and Educate	<i>Meyner Room (Ballantine House)</i>
4:30 to 5:15 pm	Closing Session "Advocacy = Good Public Policy"	<i>Auditorium</i>
5:15 to 7:00 pm	Reception	<i>Engelhard Court</i>

Conference Hosts



COMMON WEALTH
of New Jersey



ENRICHING PLACE

Featured Speakers



Tony Hiss, an independent author, lecturer, and consultant on restoring America's cities and landscapes, is the author of thirteen books, most recently *In Motion: The Experience of Travel* (Knopf, October 2010—hardcover and e-book; the 2012 paperback edition, from APA Planners Press, features a new foreword by Robert D. Yaro, president of Regional Plan Association).

Hiss was a staff writer at *The New Yorker* for more than 30 years, and for the past 18 years has been a Visiting Scholar at New York University, first at the Taub Urban Research Center and more recently at the Robert F. Wagner Graduate School of Public Service. He has been a Regents Lecturer at the University of California in Berkeley and in Davis, a Scholar-in-Residence at the Chaddick Institute for Metropolitan Development at DePaul University, and a Senior Fellow of the CUNY Institute for Urban Systems (CIUS).

Previous books by Hiss include the award-winning *The Experience of Place* (now a Vintage paperback and e-book), and *H₂O: Highlands to Ocean* (with Christopher Meier), which introduces an almost unknown treasure, the vast natural landscape and waterscape that still supports the entire New York City region, the most densely settled part of North America.

In Motion, Hiss's most wide-ranging book, explores the kinds of awareness that travel of all kinds, even a walk around the block, makes available, with particular emphasis on an extraordinary "hidden dimension," the wide-awake, fully alert sense he calls Deep Travel. The book champions this ability, which because it sees patterns invisible to other parts of the mind, can be of increasing value to designers and planners during a time of rapid change. Like *The Experience of Place*, which reached a broad general audience and at the same time has been embraced by architects, landscape architects, planners, preservationists, and educators, *In Motion* is a book for anyone who'd like to

make Deep Travel more a part of daily life and for professionals in many areas eager to extend their range. His new Campaign for the New Jersey Meadowlands is a part of this.

Hiss has written widely in earlier books about travel, the value of special landscapes and regions, and, on occasion, about his family. Among these books are *All Aboard with E.M. Frimbo* (with Rogers E. M. Whitaker), an American travel classic hailed as the ultimate railroad book; two books about the Midwest with celebrated landscape photographers—*Prairie Passage* (with Edward Ranney); and *Disarming the Prairie* (with Terry Evans); *A Region at Risk: The Third Regional Plan for the New York—New Jersey—Connecticut Metropolitan Area* (with Robert D. Yaro), which received front-page coverage in *The New York Times*; and *The View from Alger's Window: A Son's Memoir* (a *New York Times* Notable Book, and now a Vintage paperback and e-book).

Hiss wrote the report that launched New York State's 100-mile-long Hudson River Valley Greenway and led to the Hudson Valley National Heritage Area. He consults frequently on changing 21st-century regional growth patterns and how they relate to "larger heres and longer nows." He has lectured widely in the U.S., Canada and Japan, and conducts Deep Travel mobile workshops, and his work has appeared in *The New York Times*, *Newsweek*, *The Atlantic*, and *Travel & Leisure*. He has been a Guggenheim Fellow, and has received a number of awards, including the National Recreation and Park Association's National Literary Award, which recognized Hiss's lifetime of "spellbinding and poignant" writing about "how our environments, modes of travel, and other aspects of the American landscape affect our lives." "His words," said the citation, "are often poetic, always real."

Tony Hiss lives in New York City with his wife, the novelist Lois Metzger, and their son, Jacob. His website is www.howwetravel.org



Terry Davis has been with AASLH since 1994. Her responsibilities include the day-to-day management of operations at AASLH, including staffing and staff management, budget, fundraising, program planning and implementation, membership services, and acting as an advocate for history institutions and professionals. During her tenure at AASLH, the organization has experienced financial and programmatic growth. In 2003, AASLH completed its first ever endowment campaign and raised over \$1 million for an operating endowment. Immediately following the campaign AASLH established a planned giving Legacy Society. Since that date AASLH has raised another \$500,000 for its endowment. Also during Davis' tenure AASLH developed and delivered new programming such as the American Indian Museums Program, Pathways: Finding Yourself in History, Visitors Count visitor survey program, StEPs standards program for historical organization, Connecting to Collections Bookshelf partnership with IMLS, and the Federal-State Partnership for Museums Initiative. Davis acted as Coalition Administrator for the Federal State Partnership for Museums Coalition, a network of over 60 museum service organizations dedicated to securing federal grants (through IMLS) that will go to the states restricted for regranting to museums to meet state and local needs. Also, in 2010 AASLH received a performance award from the Tennessee Center for Performance Excellence. Davis received both her BSBA and MBA degrees from Indiana Wesleyan University in Marion, Indiana. She has also completed courses in fundraising and planned giving at the Indiana University School of Philanthropy, and in 1993 received her CFRE (Certified Fundraising Executive) credentials from the National Society for Fundraising Executives. Ms. Davis lives in Nashville, Tennessee.



Julie C. Hart has been engaged in AAM's standards and excellence efforts since 1996. She served as the Accreditation Program's Assistant Coordinator and Coordinator before becoming Assistant Director of Accreditation in 2001. In 2008 she became AAM's Senior Director for Museum Standards and Excellence, taking over the leadership of an expanded portfolio including the Accreditation, Museum Assessment, and Peer Review Programs, museum standards and ethics issues, and many internationally focused activities. Most recently, this has expanded to include leading new initiatives associated with the transformation of the Association to the Alliance, including the "Reinvention of Accreditation," the Continuum of Excellence, Pledge of Excellence, and the Core Documents Verification Program. She is also facilitating the transition of the excellence programs from a 100% paper-based environment to a fully online participation system. Through her years working with AAM standards programs she has had unprecedented access to the detailed operational practices and documents of several hundreds of museums, of all types and sizes, gaining a wide perspective on the trends, issues, and current standards and best practices in the museum and non-profit world. She was also a member of the Association for State and Local History's StEPs Advisory Committee (a standards program for history museums and historic sites), and is a Peer Reviewer for Maryland Nonprofits' Standards for Excellence certification program. She holds an M.A. (1996) in Art History from The George Washington University in Washington, DC, and a B.A. (1992) in Art History from the University of Mary Washington in Fredericksburg, Virginia.

ENRICHING PLACE

History Awards & Reception



A historic first is happening this year in Newark with the merger of the annual History Issues Convention and the Historic Preservation Conference into a single, significant conference at the Newark Museum.

Last night, on June 5 2013, the Advocates for New Jersey History hosted the History Leadership Awards Program and Reception, which was designed to engage the state's history and historic preservation leadership to focus on the future preservation of the tangible remains of New Jersey's past.

The reception's featured speaker was Dr. Clement Alexander Price. His topic was, "American History, Historic Preservation and the Next Big Thing in Preserving Our Past."

In addition to Dr. Price's presentation, the Advocates recognized residents who have distinguished themselves by their efforts to give New Jersey pride in its past. The recipients of this year's History Leadership Awards were honored at last night's reception. The awards categories are:

Maureen Ogden Award

For lifetime achievement in New Jersey History

Dwyer Award

For outstanding achievement in journalism related to or supporting New Jersey History

Governmental Leadership Award

For elected officials with exemplary service to the New Jersey history community

Stern Award

For outstanding service to the New Jersey community history, with an emphasis on diversity

The Advocates for New Jersey History seeks to build awareness of public history activities

in the state, to increase support for high quality, responsive and professional state and private agencies engaged in public history, to advocate for public support for historical agencies, and to serve public history and history education, heritage tourism, and historic preservation.

Clement Alexander Price

is Board of Governors Distinguished Service Professor of History, Rutgers University-Newark Campus, and Director of the Rutgers Institute on Ethnicity, Culture, and the Modern Experience, an interdisciplinary academic center. Dr. Price is the foremost authority on the black New Jersey past by virtue of his *Freedom Not Far Distant: A Documentary History of Afro-Americans in New Jersey (1980)*, *Many Voices, Many Opportunities: Cultural Pluralism and American Arts Policy (1994)* and numerous other scholarly works. He has been the recipient of many awards for academic and community service. In 2006, he was inducted into the Rutgers University Hall of Distinguished Alumni.

Dr. Price is a trustee of the Geraldine R. Dodge Foundation, chairman of the Save Ellis Island Foundation, a member of the Scholarly Advisory Committee to the National Museum of African American History and Culture, Smithsonian Institution, and a Trustee of the National Trust for Historic Preservation. He chaired the New Jersey State Council on the Arts from 1980 to 1983. In July 2011 Dr. Price was appointed by President Obama to serve as vice chair of the Advisory Council on Historic Preservation.

Reception Sponsors



PSEG

We make things work for you.



ENRICHING PLACE

Sponsors

Corinthian

AIA New Jersey
Hanini Group
Preservation New Jersey
TD Bank

Ionic

Beacon Redevelopment, LLC
HMR Architects, P.A.
Iwdmr & Associates, PC
Michael Calafati Architect, LLC
Precision Building & Construction, LLC
RPM Development Group

Doric

Connolly & Hickey Historical Architects, LLC
Crossroads of the American Revolution
National Heritage Area
Erie Landmark Company
ESCA Special Clean
Hunter Research, Inc.
Dr. and Mrs. Joseph E. Salvatore
Keast & Hood Co.
MBI-GluckShaw
Page Ayres Cowley Architects, LLC
Richard Grubb and Associates, Inc.
Wu & Associates, Inc.

Tuscan

Branch Brook Park Alliance, Inc.
Clarke Caton Hintz
Cottage Gardens
Eclectic Architecture
Ford 3 Architects LLC
Heritage Consulting Inc.
History in the Making
John Milner Architects, Inc.
KSI Professional Engineers, LLC
League of NJ Historical Societies
LimeWorks.us
Mary Delaney Krugman Associates, Inc.
Maser Consulting
Mills + Schnoering Architects, LLC
Preservation Partners
Preservation Possibilities
Public History Partners
Restoration Technologies of New Jersey LLC
Tuckerton Seaport
URS Corporation
William Neumann Photography

Pillar

ARCH2, Inc.
Innerglass Window Systems, LLC
Jan Hird Pokorny Associates, Inc.

Foundation

APA NJ Chapter
Newark Museum

Exhibitors

APA New Jersey Chapter
Beacon Redevelopment
Branch Brook Park Alliance
Clarke Caton Hintz
Cottage Gardens
Crossroads of the American Revolution
National Heritage Area
Eclectic Architecture
Erie Landmark Company
ESCA Special Clean
Essex County Division of Cultural
and Historic Affairs
Ford 3 Architects
Hanini Group
HMR Architects, P.A.
Hunter Research, Inc.
Lamb Stained Glass Studios
League of New Jersey Historical Societies
Limeworks.us

MBI-GluckShaw
New Jersey Historic Trust
New Jersey Historical Commission
New Jersey State Archives
North Jersey Transportation Planning Authority
Precision Building & Construction, LLC
Preservation New Jersey
Richard Grubb and Associates, Inc.
South Jersey Cultural Alliance
Tuckerton Seaport
Wu & Associates, Inc.

Poster Presentations

Life and Times of Fred Wesley Wentworth
Preservation Polaroid Project
Lost Landscapes of the NJ Meadowlands
Stained Glass and Frame Restorations

ENRICHING PLACE

Honorary Committee

Governor Tom Kean

The Honorable Kim Guadagno

Assemblyman Ralph Caputo

Assemblyman Al Coutinho

Assemblywoman Sheila Y. Oliver

Assembly Speaker

Senator Teresa Ruiz

Assemblywoman Grace Spencer

Senator Jim Whelan

*Committee Chair, State Government
Wagering, Tourism & Historic Preservation*

Meme Omogbai

*Chief Operating Officer, The Newark
Museum, Vice Chair, NJ Historic Trust*

Clement A. Price

*Board of Governors Distinguished Service
Professor of History at Rutgers-Newark
and Vice Chair of the
Advisory Council on Historic Preservation*

Cate Litvack

President, Advocates for New Jersey History

Elizabeth Del Tufo

*President, Newark Preservation and
Landmarks Committee*

Tim Hart

*President, League of NJ Historical Societies;
Trustee, MAAM*

Tom Carroll

Chair, New Jersey Cultural Trust

Felipe Gorostiza

Chair, New Jersey State Review Board

Caroline Harris

*President, New Jersey Association of Museums
Associate Director for Education,
Princeton University Art Museum*

Sophia Jones

*Chair, NJ Historic Sites Council
Architect, Historic Building Architects*

David Knights

President, Preservation New Jersey

Maxine N. Lurie

Chair, New Jersey Historical Commission

Planning Committee

Judith Adams, AICP, NJ Historic Trust

Carol Blunda, The Newark Museum

Michael Calafati, AIA, LEED AP,
Michael Calafati Architect, LLC

Glenn Ceponis, NJ Historic Trust

Stephanie L. Cherry-Farmer,
Preservation New Jersey

Sara R. Cureton, New Jersey Cultural Trust

Erin Dougherty, Historical Society of Princeton

Bonnie N. Flynn, AICP PP, Stafford Township

Lisa Ginther, MBI-GluckShaw

Catherine Goulet, NJ Historic Trust

Ilene Grossman-Bailey, Ph.D., RPA,
Richard Grubb & Associates, Inc.

Dorothy P. Guzzo, NJ Historic Trust

Timothy G. Hart, Ocean County Cultural and
Heritage Commission,

Dorothy Hartman, History in the Making

Margaret M. Hickey, R.A., Connolly & Hickey
Historical Architects

Cate Litvack, Advocates for New Jersey History

Niquole Primiani, New Jersey Historical
Commission

Dan Saunders, NJ Historic Preservation Office

Andrea Tingey, NJ Historic Preservation Office

ENRICHING
PLACE



2013 NJ HISTORY
AND HISTORIC
PRESERVATION
CONFERENCE

SESSIONS



ENRICHING PLACE

Morning Sessions

S-1 | Necessary Messes: Historic Mortar Recipes | Science and Art of Historic Plaster

Small Program Room

This technical session will focus on the art and science of two prevalent historic building materials: mortar and plaster. Participants will learn about historic flat and ornamental plasterwork with examples and case studies that will illustrate plaster material composition, analysis, chemistry, history, and conservation practices. A discussion about mortar will demonstrate how historic mortar recipes are much different than today due to the form in which lime is now commercially available. Case studies and techniques will demonstrate the challenge of executing the specifications of a replacement historic mortar. Participants will learn how to choose appropriate sands, reclaiming aggregates from historic mortars and the importance of mixing to achieve the right finished product.

MODERATOR AND SPEAKER:

J. Christopher Frey, *President,*
Keystone Preservation Group, Inc.

SPEAKERS:

Andrew deGruchy,
Owner/Consultant, LimeWorks.us
David Flaharty, *Sculptor*
Michael J. Margulies, *AIA, Principal,*
Eclectic Architecture, LLC
Randy Ruth, *Lab Technician, LimeWorks.us*

S-2 | Reclaiming Abandoned Properties: Innovative Tools for Reversing Community Disinvestment

Large Program Room

Abandoned properties, particularly in our urban cores, are one of the most common and toughest challenges historic preservationists must confront. This session will foster awareness of proactive strategies that communities are using to address abandonment and, in the process, help restore and rehabilitate character-defining historic buildings. The Housing and Community Development

Network of New Jersey will illustrate the situations that create and exacerbate property abandonment. Attendees will learn how the 2004 Abandoned Property Rehabilitation Act (APRA) has empowered towns and cities to address problem properties. Case studies from Newark and Trenton will examine how municipal officials, property owners, and community development corporations use the APRA and other tools to instigate historic rehabilitation and urban revitalization.

MODERATOR:

Stephanie L. Cherry-Farmer, *Senior Programs*
Director, Preservation New Jersey

SPEAKERS:

Michael Meyer, *Director, Division of*
Housing & Real Estate, City of Newark
Diane Sterner, *Executive Director, Housing and*
Community Development Network of New Jersey
Julia A. Taylor, *AICP, LEED,*
Managing Director, Community Planning
and Development, ISLES, Inc.

S-3 | Museums of Excellence: Standards and Practices for Organizations Large and Small

Trustees Room (Ballantine House)

If museums are to reach their full potential, they must unite around shared standards and best practices for audience engagement, conservation and preservation, education, ethics, finance, professional development, security, and more. In this session participants will learn about two models:

- The Continuum of Excellence is a new field-wide model that enables and encourages all museums to participate in a process of achieving excellence through Core Standards and programs that offer opportunities for various levels of assessment, feedback, and recognition that build on one another.
- The Standards and Excellence Program for History Organizations (StEPS) is a voluntary, self-assessment tool created by the American Association for State and Local History. The program encourages awareness and achievement of national standards for small- to mid-sized history organizations. In New Jersey, the Best Practices for Nonprofit History Organizations Workshop Series is based on the StEPS organizational topics.

Photos, clockwise from top left: Indigo Hotel, opening in 2013, former First National State Bank, Newark; Second River, Essex County Branch Brook Park; Ballantine House, Newark Museum; Cathedral Basilica of the Sacred Heart, Newark

MODERATOR:

Erin Dougherty, *Executive Director,
Historical Society of Princeton*

SPEAKERS:

Terry Davis, *President and CEO, American
Association for State and Local History*

Julie C. Hart, *Senior Director,
Museum Standards & Excellence,
American Alliance of Museums*

S-4 | Retrofitting Historic Properties Against Flood Damage

Auditorium

Hurricane Sandy's devastation of New Jersey's coast raised questions about how and where to rebuild. The future of historic properties damaged by the flooding is especially problematic, since insensitive rehabilitations can result in a loss of historic character. The Federal Emergency Management Agency (FEMA) provides guidance for building and retrofitting existing structures with "flood resistant materials," as well as other strategies for minimizing damage to structures, such as elevating buildings and building systems. Some strategies, however, may adversely affect a building's historic appearance or relationship to its site. Panelists will review how flooding affects building design and what qualities of traditional construction allow historic properties to be as resilient as they are. Participants will hear a first person account of an historic home damaged by high water that was sensitively restored in accordance with FEMA's goals of rebuilding "better, safer, stronger" after a disaster.

MODERATOR AND SPEAKER:

Mary Delaney Krugman, *JD, MS Hist. Pres.,
President, Principal Preservation Specialist,
Mary Delaney Krugman Associates, Inc. (MDKA)*

SPEAKERS:

Lamont H. Czar, *P.E., Owner, Czar Engineering, LLC*
Donald Watson, *FAIA, NCARB, EarthRise Design*

S-5 | What Lies Beneath: Archaeology of the City

Meyner Room (Ballantine House)

Urban archaeology, exploring what lies beneath the built surfaces of the city, may yield rich treasures and vital knowledge about the history and development of our urban environments. Even if a historic building is gone, buried wells, pits, wharfs,

and other features may be studied, preserved and inform city planning efforts. This panel session will explore three case studies in which urban archaeology played a key role: Destruction of a swath of Philadelphia's waterfront for interstate construction galvanized early support for urban archaeology in the United States; 19th century toys and material culture from excavations in New Jersey and New York teach a child's perspective; and privy deposits in Newark provide insights about working class German and Irish immigrants.

MODERATOR:

Illene Grossman-Baily, *RPA, Ph.D.,
Senior Archeologist, Richard Grubb & Associates*

SPEAKERS:

Jean Howson, *Principal Archaeologist,
The RBA Group, Inc.*

David G. Orr, *Assistant Professor, Temple University,
Department of Anthropology*

Rebecca Yamin, *Ph.D., Historical Archaeologist*

S-6 | Newark Museum and its Neighborhood:

A Legacy of Preservation, Reuse and New Design Field Session | Walking Tour

Meet in front of the Gift Shop/Bookstore

This field session will address the history of the Museum's architecture, the surrounding cityscape of the James Street Commons Historic District and its evolution over time. Using real-life examples of the original 1926 museum, Ward Carriage House, 1885 Ballantine House, 1784 schoolhouse, Polhemus House (demolished) and a 1916 former YWCA, the session will raise questions of adaptive use, historic preservation and urban obsolescence in light of changing demographics and patterns of use. It will also address changing attitudes toward how museums present themselves to their audiences. *This is a walking tour. Please wear comfortable shoes and dress for the weather.*

TOUR LEADERS AND SPEAKERS:

Ulysses Grant Dietz, *Chief Curator,
Curator of Decorative Arts, Newark Museum*

Karen Nichols, *FAIA, Principal,
Michael Graves & Associates*

Photos, facing page, from top:
Essex County Courthouse, Newark;
Old First Presbyterian Church, Newark



ENRICHING PLACE

Afternoon Workshops

W-1 | The Morning After: Surviving Sandy and Preparing for the Next Natural Disaster

Auditorium

Along with unprecedented economic and physical devastation, Superstorm Sandy brought to New Jersey an unavoidable reminder of the critical importance of disaster planning. All around the state, historical organizations braced for the storm's impact, and then struggled to cope with its aftermath. This double session workshop will present three case studies of disaster mitigation drawing from the experiences of a large institution, a small institution and a county organization. The second part will be in the format of a workshop and panel discussion on strategies and resources for disaster planning. The session will conclude by providing information about a new series of workshops on disaster planning and collections care that will be offered in New Jersey over the next two years (funded by a grant from the Institute for Museum and Library Services) along with the opportunity for all participants to discuss particular preparedness strategies with their colleagues.

PART 1:

MODERATOR:

Meme Omogbai, *Chief Operating Officer, Newark Museum*

SPEAKERS:

Laura M. Poll, *Librarian/Archivist,*

Monmouth County Historical Association

Captain Vincent Solomano, *National Guard*

Militia Museum of New Jersey

Charles C. Tantillo, *Director,*

Facility Operations, Newark Museum

PART 2:

MODERATOR AND SPEAKER:

Sara Cureton, *Director, New Jersey Historical Commission*

SPEAKERS:

Tim Corlis, *Head of Preservation, Special Collections &*

University Archives, Rutgers University

PANELISTS:

Joseph G. Bilby, *BA, MA, Assistant Curator,*

National Guard Militia Museum of NJ

Tim Corlis, *Head of Preservation, Special Collections &*

University Archives, Rutgers University

Sara Cureton, *Director, New Jersey Historical Commission*

Robert Dennin, Jr., *National Guard Militia Museum*

Dorothy Guzzo, *Executive Director,*

New Jersey Historic Trust



Laura M. Poll, *Librarian/Archivist,*
Monmouth County Historical Association
Bernadette M. Rogoff, *Curator of Collections,*
Monmouth County Historical Association
Captain Vincent Solomano, *National Guard*
Militia Museum of New Jersey
Charles C. Tantillo, *Director, Facility Operations,*
Newark Museum

W-2 | Rehab Tax Credit Projects

Field Workshop | Bus Tour

Meet bus outside main museum entrance at 1:15 pm
The Historic Rehabilitation Tax Credit workshop will focus on the fundamentals of the Federal Historic Rehabilitation Tax Credit program and will offer examples of the many successful adaptive reuse projects. The workshop will also address challenges developers face while trying to juggle program goals, finance goals, code restrictions and the Secretary of Interior's Standards for Rehabilitation. Participants in the workshop will have the opportunity to visit successful adaptive reuse projects that utilized the Federal Historic Rehabilitation Tax Credit.
This is a bus and walking tour. Please wear comfortable footwear and dress for the weather.

TOUR LEADER :

Meghan M. Baratta, *Principal Historic Preservation*
Specialist, NJ Historic Preservation Office

SPEAKERS:

Samer Hanini, *Principal, The Hanini Group, LLC*
Mary D. Krugman, *Historic Preservation*
Specialist, MDK & Associates
Bill Mikesell, *Partner, Mikesell & Associates*
Audrey Tepper, *Historic Architect,*
National Park Service
Ulana Zakalak, *Historic Preservation*
Consultant, Zakalak Associates

W-3 | Marrying Development and Preservation in Downtown Newark

Field Workshop | Walking Tour

Meet guide outside museum entrance at 1:30 pm.
In this walking tour participants shall see and hear first hand the development conflicts and compromises of when the largest City in the State's business district is both a Historic District and a Redevelopment Area. Participants will visit the transformation of a Cass Gilbert building into a hotel, the creation of a new downtown sub-district where charter schools are the center, the reimaging of the oldest park in the City, and the how and why

of two blocks of demolition for the building of a new office tower. There will also be discussion of signage and the City's façade improvement program.
This is a walking tour. Please wear comfortable footwear and dress for the weather.

TOUR LEADER:

Michele Alonso, *PP, AICP, Principal Planner,*
City of Newark

SPEAKERS:

Ben Donsky, *Project Manager, Biederman*
Redevelopment Ventures Corporation
Samer Hanini, *Co-founder and Principal,*
Hanini Group, LLC
Linda Morgan, *Principal, LPM Strategies*
Ulana Zakalak, *Historic Preservation*
Consultant, Zakalak Associates

W-4 | Newark Through the Ages

Field Workshop | Bus Tour

Meet bus outside main entrance at 1:15 pm.
The tour will begin at the Newark Museum and travel through downtown viewing the history of Newark beginning with the Gutzum Borglum statue of the "Puritan and the Indian" commemorating the founding of the city in 1666. The tour will view some of the city's great architectural landmarks including the Essex County Courthouse, designed by Cass Gilbert, the Peddie Memorial Baptist Church, designed by William Halsey Wood, Old First Presbyterian Church, and Trinity Cathedral, which was used by the British soldiers when they occupied Newark in 1776. Participants will also view more recent development projects including the Prudential Center (the "Rock"), home of the NJ Devils, and NJPAC, home of the NJ Symphony, plus the expansion of the college/university sector which makes Newark the "University Center of New Jersey".

The second part of the tour will explore the North Ward and Branch Brook Park, designed by Frederic Law Olmsted, followed by the Forest Hill Historic District. Before heading back to the Museum, a stop will be made at the Cathedral Basilica of the Sacred Heart, the fifth largest church in North America. The last stop will be the Plume House, built in 1725, where discussion will focus on NJDOT's future expansion of Route 280, which has the potential to further endanger the Plume House's future.
This is a bus and walking tour. Please wear comfortable footwear and dress for the weather.

TOUR LEADER:

Elizabeth R. Del Tufo, *President,*
Newark Preservation and Landmarks Committee



W-5 | The Olmsted Legacy in Branch Brook Park and the Forest Hill Historic District *Field Workshop | Trolley Tour*

Meet trolley outside main museum entrance at 12:45 pm.

Branch Brook Park is the first county park in the nation, listed on the National Register of Historic Places and recognized as one of the finest examples of the landscape artistry of Frederick Law Olmsted and the Olmsted Brothers firm. The 400 plus-acre site is a busy urban park that draws more than one million visitors a year, including international visitors who enjoy the blossoming of the country's largest collection of historic Japanese cherry trees. During decades of insufficient funding, the park experienced substantial deterioration. The Branch Brook Park Alliance (BBPA), a nonprofit corporation, was established in 1999 to work in partnership with Essex County to restore and revitalize the park. To date, more than \$46 million has been invested for capital projects.

The tour will take participants through portions of the park stopping at the Essex County Cherry Blossom Visitor Center for an in-depth discussion of the Park's history and restoration. Panelists will highlight the integral relationship of the historical design of the park to its modern function. The tour will continue through the park and into the Forest Hill Historic District to visit two historic residences.

This is a bus and walking tour. Please wear comfortable footwear and dress for the weather.

Essex County Branch Brook Park is part of the historic Essex County Park System. Transportation for today's tour is provided by the Essex County Division of Cultural and Historic Affairs.

TOUR LEADER:

Kathleen P. Galop, *Attorney at Law,
Principal, Preservation Possibilities*

SPEAKERS:

Barbara Bell Coleman, *Board Co-Chair,
The Branch Brook Park Alliance*

Paul Cowie, *Certified Arborist, Manager
Historic Cherry Tree Collection Branch Brook Park*

Faye Harwell, *FASLA, Partner/Landscape
Architect, Rhodside & Harwell*

Catharine Longendyck, *Member,
Forest Hill Community Association*

*Photos, from top: statue of George Washington
by sculptor John Massey Rhind, located in
Newark's Washington Park; view of downtown Newark
from Military Park*

Afternoon Education Sessions

S-7 | The Edison Memorial Tower and Meridian Hill Park: Restoration of John J. Earley Mosaic Concrete

Meyner Room (Ballantine House)

In the early twentieth century, John J. Earley developed a process for creating concrete that resulted in the construction of several remarkable structures including the Edison Memorial Tower and Washington D.C.'s Meridian Hill Park. The 1915 Park was designed to resemble an Italian Renaissance garden. Its perimeter walls, paving, cascade, stairs, fountains, benches, and other ornamental elements are all constructed with multiple types of exposed aggregate concrete. The 1938 Edison Tower includes twelve different concrete mixes for the 117-foot-high fluted shaft. This panel session will present the challenge of restoring these historic mosaic concrete structures through the use of mockups by contractors with a high level of craftsmanship, experience in historic repairs, and knowledge of materials.

MODERATOR:

Nancy Zerbe, *Historic Preservation Consultant/ Edison Memorial Tower Corporation*

SPEAKERS:

Robert F. Armbruster, *President, The Armbruster Company*

Paul E. Gaudette, *FAPT, FACI, Principal, Wiss Janney Elstner Associates*

Anne E. Weber, *FAIA, FAPT, Partner, Mills + Schnoering Architects*

S-8 | Public Participatory Geographic Information System (PPGIS): Empowering Historic Preservation Planning

Small Program Room

Public participatory geographic information system technology (PPGIS), can be a powerful tool to engage the public with today's community outreach efforts. In a world dominated by handheld devices, PPGIS permits wide participation and offers a cost-effective ongoing "virtual forum" throughout a project's development and implementation that can expand community outreach from a one-night-only presentation into a 24/7 portal for understanding

and involvement. This panel session will examine several case studies that utilized PPGIS as part of the historic preservation planning process. Discussion will include process and results for each of the case studies, as well as any best practices developed and pitfalls to avoid. Finally, a real-time demonstration of the technology using handheld devices will help to explain its potential.

MODERATOR AND SPEAKER:

Francis J. Banisch, *PP, AICP, President & CEO, Banisch Associates, Inc.*

SPEAKER:

Wansoo Im, *MURP, Ph.D., President & CEO, Vertices*

S-9 | A Leadership Case Study of the Northeast African American Historic Places Outreach Program

Trustees Room (Ballantine House)

In 2009, the National Trust for Historic Preservation and the 1772 Foundation partnered to design the Northeast African American Historic Places Outreach Program, a leadership training initiative for emerging grassroots organizations and established nonprofits. This session highlights the Board Building component which is funded with the generous support of the 1772 Foundation. The board training is based on three variables most critical to strong organizations—sound governance, financial management, and leadership. The session will be punctuated by one of the program participants who will discuss the "transformative" impact the program is having on her group.

The NJ Historic Trust and Historical Commission are exploring this model for a capacity-building board training initiative that would provide assistance to approximately five diverse history organizations for twelve months.

MODERATOR:

Niquole Primiani, *Chief Programs Officer,
New Jersey Historical Commission*

SPEAKERS:

Robert Bull, *Senior Vice President,
The Compass Group*

Brent Leggs, *Field Officer,
National Trust For Historic Preservation*

Linda Shockley, *President,
Lawnside Historical Society, Inc.*

S-10 | Best Practices for Historic Preservation Commissions

Large Program Room

Geared toward Historic Preservation Commission (HPC) members, this panel session assembles several Chairs who represent HPCs that vary in size, type of commission, activities undertaken and how they work within a community. Within the parameter of the municipal land use law, the establishment of a local commission may be regulatory or advisory, may have paid staff and/or a budget, may have professional and/or legal guidance available, and may address different types of applications. The moderator will facilitate a dialog that explores how commissions implement their ordinances, handle their public meetings, engage with the community, work with the governing body, and interact with applicants. This session would also be beneficial to local government officials, planners and other professionals who assist municipalities in preparing ordinances and implementing their master plans.

MODERATOR:

Dorothy P. Guzzo, *Executive Director,
NJ Historic Trust*

SPEAKERS:

David V. Abramson, *AIA,
Principal/Historic Preservation Architect,
CTS Group Architecture/Planning, PA*

Max Hayden, *AIA, Architect,
Maximillian Hayden Architect*

Jennifer Rothschild, *Esquire, (former) Chair,
Closter Historic Preservation Commission*

S-11 | A New Strategy for Access and Egress at the Statue of Liberty

Trustees Room (Ballantine House)

Safety for the more than three million annual visitors is the paramount concern of the National Park Service at the Statue of Liberty. When the Park Service embarked upon a program to update the fire safety and egress, improve visitor amenities, and provide better accessibility, the physical constraints imposed challenges as monumental as the Statue. This panel session explores the collaborative and multi-disciplinary approach to installing a new concrete shaft that did not compromise the original steel girder system designed by Gustav Eiffel. Finally, the impact of Hurricane Sandy on Liberty Island and the Statue will be reviewed as the NPS moves forward with plans to reopen the facility.

MODERATOR:

Meredith Arms Bzdak, *PhD, Partner,
Mills + Shoering Architects, LLC*

SPEAKERS:

Alfred R. Borden, *FIALD, PLDA,
Principal, The Lighting Practice*

Michael J. Mills, *FAIA, Partner,
Mills + Shoering Architects, LLC*

Denise Richards, *PE, Project Manager,
Keast & Hood Co.*

Anne E. Weber, *FAIA, FAPT, Partner,
Mills + Shoering Architects, LLC*

S-12 | Take Me to the River: Rediscovering the Raritan Riverfront

Large Program Room

This session will describe a series of proposed planning interventions along the Raritan Riverfront in Somerset and Hunterdon Counties that seek to combine historic preservation, landscape restoration, economic development, active and passive recreation and place-making principles to neglected and largely inaccessible portions of the Raritan riverfront.

MODERATOR AND SPEAKER:

Carlos Rodrigues, *PP/AICP, Principal,
Design Solutions for a Crowded Planet*

SPEAKERS:

Donald Christensen, *Chair,
Raritan Economic Development Committee*

Jamie Sunyak, *PP/AICP, Planning Director,
Raritan Township*

S-13 | There's an App for That: Today's Technology and Heritage Tourism/Interpretation

Small Program Room

Historic, cultural and social institutions face significant challenges in attracting larger and more diverse audiences, conveying their messages in ways that appeal to tech-savvy individuals, and drawing on a broad range of sources for interpretation. This panel session will explore options of using available technology to offer new means of interpretation. Participants will learn about mobile phone applications, how they can be used as marketing and interpretation tools, and how to begin developing concepts for applications. Another case study will explain how audio podcasts can conveniently present interpretive material in both urban and rural settings. The research, script writing, recording, signage, web site support and marketing will outline a template for practical use.

MODERATOR AND SPEAKER:

Douglas C. McVarish, *Principal, YourTownApps LLC*

SPEAKERS:

Robert Higgs, *Pastor, First Presbyterian Church of Elizabeth*

Matthew E. Pisarski, *AICP, PP, Principal Planner, County of Cumberland*

Jeremy E. Tenenbaum, *Director of Marketing and Graphics, VSBA, LLC*

Keith I. Wasserman, *Principal, Shoot the Moon Productions*

S-14 | Digging Around the House: Using Archaeology to Plan, Promote, Preserve, and Educate

Meyner Room (Ballantine House)

Archaeology serves an essential role in planning and promoting publicly-funded rehabilitation, preservation, and educational projects. Archaeology provides data for nominations to the State and National Register of Historic Places; supplies planners, architects, and engineers with ways to appropriately design projects to avoid or minimize impacts to non-renewable archaeological resources; and offers educational information to the public. This session highlights these and other benefits by examining archaeology's role at White Hill Mansion, Clark-Watson House, Dey Mansion, Kay-Evans Farmstead, and the Abbott Farm National Historic Landmark.

MODERATOR AND SPEAKER:

Michael J. Gall, *R.P.A., Senior Archaeologist, Richard Grubb & Associates, Inc.*

SPEAKERS:

Richard Hunter, *Ph.D., R.P.A., President/Principal Archaeologist, Hunter Research, Inc.*

Richard Veit, *Ph.D., R.P.A., Professor of Anthropology, Monmouth University*

Closing Session: "Advocacy = Good Public Policy"

Auditorium

Advocates are the voices who present their concerns about history and historic preservation to elected officials and lobby as the way to reach those decision makers. The role of an advocate is to educate legislators about public history and historic preservation concerns, thus enabling them to develop good, forward-thinking legislative policies. This panel session will explore advocacy at the Federal, state and local levels, and lobbying will be discussed as a critical component of effective history and preservation advocacy.

MODERATOR:

Cate Litvack, *President, Advocates for New Jersey History*

SPEAKERS:

Terry L. Davis, *President and CEO, American Association for State and Local History*

Julie Hart, *Senior Director for Museum Standards and Excellence, American Alliance of Museums*

Scot Mackey, *Partner, MBI-Gluckshaw*

Conference Reception

Englehard Court

Unwind after a full day of educational sessions and meet up with colleagues and friends. Enjoy music from the Rutgers Mosaic Jazz Ensemble.

ENRICHING
PLACE



2013 NJ HISTORY
AND HISTORIC
PRESERVATION
CONFERENCE

SPEAKERS



ENRICHING PLACE

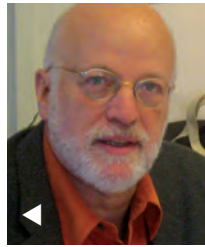
Speakers

David V. Abramson, AIA is a Principal for CTS Group Architecture Planning, PA. Mr. Abramson is currently serving as the Chair for the Newark Landmarks and Preservation Commission and has been a long standing member of the New Jersey State Review Board for Historic Sites. Many of his projects have received awards of excellence from NJDEP, the NJ Chapter of the American Society of Landscape Architects, AIA Newark and Suburban Chapter, Preservation League of New York State and the National Association of Home Builders. In addition to his historic architecture practice, he has served as an adjunct lecturer for Drew University, NJ Institute of Technology, and the City University of New York. He has served as a board member to the Newark Preservation and Landmarks Committee and for the Habitat for Humanity in Newark.

Michele Alonso, PP, AICP is a City Planner for the City of Newark, New Jersey and advisor and Secretary to the Newark Landmarks and Historic Preservation Commission. She has been a practicing professional planner for 16 years with an emphasis on integrating historic preservation with urban redevelopment, mostly in Jersey City and Newark. She is formally the Northeast Representative of the New Jersey Chapter of the American Planning Association, coordinating educational events and tours for planners. She is also the 2010 recipient of an individual achievement award from the New Jersey Historic Preservation Office for her work in Newark. Ms. Alonso is a licensed Professional Planner in the State of New Jersey and certified by the American Institute of Certified Planners (AICP). She has a Masters of City and Regional Planning from the Bloustein School of Planning and Public Policy at Rutgers University, and a Bachelor's degree in sociology from Drew University.

Robert F. Armbruster is President of The Armbruster Company, Northbrook, Illinois. His engineering for historic preservation, especially architectural concrete restoration, often crosses into the craftsman's realm for investigation and matching of materials, sculpture, molds and repair techniques. A licensed professional engineer in multiple states, his research interests include Earley Studio and mosaic concrete.

Photos, clockwise from top left: Pulaski Skyway and Hackensack River; Kreuger-Scott Mansion, Newark; 1784 Old Stone Schoolhouse, Newark Museum; The Newark Public Library



Francis J. Banisch III, PP/AICP, President of Banisch Associates, Inc., has been a community planning consultant serving New Jersey municipalities since 1972. Mr. Banisch holds a Bachelor of Arts degree in Architecture and Urban Planning from Princeton University and is a Court-appointed Mount Laurel master. He is a licensed professional planner in New Jersey and a member of the American Institute of Certified Planners and has served as past Vice President of the New Jersey Chapter of the American Planning Association. His recent preservation planning efforts have used PPGIS in developing municipal historic preservation plans. Mr. Banisch has also been featured on the PBS television series "INNOVATIONS", highlighting his work with geographic information systems in conjunction with Rutgers University.

Meghan MacWilliams Baratta, is a Principal Historic Preservation Specialist with the New Jersey State Historic Preservation Office (NJ SHPO). Meghan has worked in a professional position at NJ SHPO since 1999, when she received her Masters in Science in Historic Preservation from the University of Pennsylvania. With the SHPO, Meghan has worked on project reviews under the New Jersey Register of Historic Places Act, Section 106 of the National Historic Preservation Act, Land Use Regulatory Program, Executive Order 215, and the Historic Rehabilitation Tax Credit Program. Meghan monitors some of the SHPO's easements and heads the internship program. Meghan also serves as SHPO representative for the D&R Canal Commission, the Mapleton Preserve and the Ellis Island State Historic Preservation Office meetings. Prior to her employment at the SHPO, Meghan was a partner with The Acanthus Group, a historic preservation firm based in Cincinnati, OH and Cheltenham, PA. With the Acanthus Group, Meghan performed both hands-on preservation work, as well as historical research, measured drawings, and grant writing for historic sites.

Joseph G. Bilby, BA, MA received his BA and MA degrees in history from Seton Hall University and served as a lieutenant in the First Infantry Division in Vietnam in 1966-1967. Mr. Bilby is retired from the New Jersey Department of Labor and currently part time Assistant Curator of the New Jersey

National Guard and Militia Museum in Sea Girt, New Jersey and a freelance writer and historical consultant. He is the author, editor or co-author of seventeen books and over 400 articles on New Jersey history and folklore, military history and outdoor subjects in both internet and print venues including *Sea Girt: A Brief History* and *Asbury Park: A Brief History*, for the History Press, has lectured widely on these subjects and is a columnist for *The Civil War News* and *New Jersey Sportsmen News*. He is publications editor for the New Jersey Civil War Sesquicentennial Committee and editor of and contributor to the award winning *New Jersey Goes to War*, a book on 150 of the state's Civil War era personalities and *New Jersey's Civil War Odyssey*, an anthology of New Jersey Civil War essays covering the period between the 1850s and the 1961 centennial. Both books were published by the official New Jersey Civil War Sesquicentennial Committee. Mr. Bilby has been awarded the Jane Clayton Award for contributions to Monmouth County (NJ) history and has received an award from the New Jersey Historical Commission for his contributions to the state's military history.

Alfred R. Borden, FIALD, PLDA is a principal and the founder of The Lighting Practice. He has a background in theater lighting for a variety of theater groups, dance troupes, and rock bands. Borden has more than 30 plus years of experience in architectural lighting design. He founded TLP to create a place where like-minded designers could work in a collaborative environment dedicated to design excellence and client service.

Robert Bull has nearly 20 years of successful fundraising experience for nonprofit organizations, both as a development officer and as a consultant. His professional fundraising skills include campaign planning and management; major gift strategy development and solicitation; special events management; direct mail and phonathon organization; volunteer leadership recruitment and development; and the art of "The Perfect Ask!" Mr. Bull joined The Compass Group after a six-year career as a senior consultant with Ketchum, Inc. Throughout his career he has provided fundraising counsel to more than 100 nonprofit organizations. A native of Baltimore, Mr. Bull is a graduate of the Baltimore School for the Arts, holds a bachelor's degree in theatre and arts administration from Goucher College, and most recently completed a master's of science in Organizational Leadership and Management from Antioch University New England.

He is a member of the Association for Fundraising Professionals (AFP), recognized as a Certified Fundraising Executive (CFRE), and currently serves on the AFP Diversity Committee. He is a frequent presenter and panelist at regional and national conferences sponsored by AFP, the Association for Healthcare Philanthropy, and Council for the Advancement and Support of Education (CASE).

Meredith Arms Bzdak, PhD, is partner in the firm of Mills + Schnoering Architects. She is an architectural historian, overseeing the majority of the firm's cultural resource management documents. Dr. Bzdak holds a BA in Art History from Mount Holyoke College and a PhD in Art History from Rutgers University. She is a Part-Time Lecturer at Rutgers University in the Art History Department, where she teaches classes on the development of the modern city and the preservation of the recent past. She currently serves on the Board of Directors of The Cultural Landscape Foundation and DOCOMOMO US New York/Tri-State and is a member of the Advisory Board for Drew University's Historic Preservation Program. Dr. Bzdak is a Chair Emeritus and Member of the Board of Advisors of the National Alliance of Preservation Commissions, and the author of *Public Sculpture in New Jersey; Monuments to Collective Identity*.

Stephanie L. Cherry-Farmer is the Senior Programs Director at Preservation New Jersey, Inc., the statewide membership-based non-profit education and advocacy organization for New Jersey. With PNJ, she manages various programs, including legislative advocacy initiatives, technical assistance, the annual "10 Most Endangered Places in New Jersey" program, the Commission Assistance and Mentoring (CAMP) program, and the organization's communications and outreach via social media, two blogs, and a monthly newsletter. Raised in Georgia, Stephanie holds an undergraduate degree in Journalism and a master's in Heritage Preservation, both from Georgia State University in Atlanta. She currently serves on the board of the Advocates for New Jersey History and the Trenton Historical Society, and as a commissioner with the Trenton Landmarks Commission. Prior to joining Preservation New Jersey, Stephanie worked with various preservation and history entities, including the

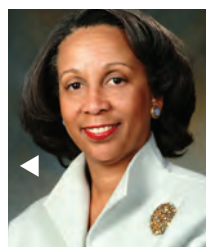


Central Park Conservancy, the Atlanta Urban Design Commission, the Georgia Trust for Historic Preservation and the Atlanta Historical Society, and as an independent preservation consultant. Her foremost interest is mid-century Modern architecture and design.

Donald Christensen is one of the few people in the ad business to actually hold a college degree in Advertising, having graduated from the country's largest ad school at Michigan State University. Following graduation, he headed west to Los Angeles, where he held a variety of positions on both the client and agency sides. After 7 years in L.A., the lure of Madison Avenue got the best of him, and he moved east, accepting an account supervisor position at a mid-sized advertising agency in New York City. Eventually, Don began focusing on advertising for New Jersey-based clients, and has never looked back. He has supervised a diverse array of work for New Jersey clients in the areas of consumer products, healthcare, energy and banking & financial services. He has served as a director on several boards, including a United Nations photography organization, the Advertising Club of New Jersey and the New Jersey Business Marketing Association, where he was also past president. In the fall of 2001, Don co-founded what is today Christensen Tamburri Communications, a full-service advertising agency, where he oversees all client service, business development and photographic activities. The recipient of numerous creative awards, the agency specializes in marketing communications for community banks and other financial organizations, including the New Jersey Bankers Association. Following the lead of his community banking clients, Don is an active community volunteer. He currently serves as Chairman of the Raritan Borough Economic Development Committee, and sits on the Board of the Somerset County Regional Center Partnership. In these roles he is helping to restore the Raritan River to its original condition, and to facilitate the re-development of Raritan's riverfront area through his coordination with the E.J. Bloustein School of Planning and Public Policy at Rutgers University.

Barbara Bell Coleman has been a consultant to corporate and not-for-profit entities. Recently retired, she spends her time serving on a combination of philanthropic and corporate boards. Ms. Coleman has a passion for social activism. With a background in social work and public health and having studied and received her undergraduate and graduate

degrees respectively from Rutgers and Columbia University, Ms. Coleman has worked with Newark's children and families for over 30 years. Barbara began her public service career in addiction services and primary prevention. In 1983, she became the CEO of the Boys & Girls Clubs of Newark. Subsequently, she became the first President of the Amelior Foundation, which recently merged into The MCJ Amelior Foundation. Until her recent retirement, Ms. Coleman served as a senior advisor to the merged entity, which has a long standing history of philanthropic service to Newark, and more recently their work has expanded internationally to Africa. Ms. Coleman remains on the board of The MCJ Amelior Foundation; has been appointed to the Schumann Fund board, which has a primary focus of education; is managing co-chair of the Branch Brook Park Alliance board and has earned emeritus status of the Women's Association of the New Jersey Performing Arts Center. Barbara is also a corporate director of Horizon Blue Cross Blue Shield of New Jersey. Among her many awards, she is most proud of: The Alexis de Tocqueville Award for her work with the READY Program; Children's Defense Fund Award for her work with the Boys & Girls Clubs of Newark; two honorary doctorate degrees in humane letters from Bloomfield College and Drew University and the Distinguished Alumni Award from Rutgers University. She and her husband Claude M. Coleman received the New Jersey Performing Arts Center Patricia and Arthur Ryan Community Service Award. Ms. Coleman is married to retired Superior Court Judge Claude M. Coleman. Between them they have three grown children and one granddaughter.



Tim Corlis received a B.A. in English from Rutgers College in 1981, and an M.L.S. from Rutgers University, 1991. He also completed a Preservation Management Institute certificate at Rutgers in 2001, and trained with Kirsten St John at Rutgers' Special Collections & University Archives' conservation lab in 2003. Tim has served as "Head of Preservation for SC/UA at Rutgers University Libraries for the past 13 years and is project archivist working with the IUE-Labor Archives collection at SC/UA. Prior to that he worked at Educational Testing Service as an information specialist (archivist, records manager & librarian,) and has served as library cataloger for the U.S. Newspaper Project in NJ at both Rutgers and the NJ State Archives.

Paul Cowie is the owner and President of Paul Cowie & Associates, Inc. (PC&A), a professional consulting firm providing expert advice in the preservation, enhancement and long-term management of shade trees and urban forest resources. Clients include a wide range of engineers, architects, municipal governments, green industry contractors, and property owners. Paul is a 1985 graduate of Rutgers University and has over 27 years of experience in arboriculture and urban forestry. He is a NJ Certified Tree Expert, ISA Certified Arborist, and Past President of the NJ Arborists, Chapter of the International Society of Arboriculture. His personal areas of expertise include assisting in the development of innovative and sustainable urban planting designs and project specifications, site-appropriate species selection, tree inventories, and community forest management planning. Recent projects have included the National 9/11 Memorial in New York, preservation of historic trees during reconstruction of seawalls at Ellis Island, cultural resource and master plan studies for Branch Brook Park and other Olmsted parks and currently Manager of Historic Cherry Tree Collection in Branch Brook Park, a redesign of Constitution Gardens on the National Mall in Washington D.C., assistance with the technical aspects of the design for the rehabilitation of Frederick Douglass Circle, Pershing Square, Astor Place & Cooper Square, and Forsyth Plaza in New York, and tree inventories at the United Nations Headquarters and Princeton University. Among other honors, Paul received the New Jersey Green Communities Award from the NJ Forest Service, NJ Tree Foundation and the NJ Community Forestry Council in 2004 for his contributions to the state's community forestry program. In 2011, he was named to The Architect's Newspaper Inner Circle—the "often unacknowledged cornerstones that guarantee the quality and excellence of today's architecture."

Sara Cureton joined the staff of the New Jersey Historical Commission in 2004 and now serves as its director. Her career began with positions at several historic sites in the Garden State, working primarily on interpretation and historic preservation projects. As director of Absecon Lighthouse in Atlantic City she developed interpretive programming and oversaw a \$3.4 million restoration of New Jersey's tallest historic beacon. Active in professional organizations, she has served on the boards of the Mid-Atlantic Association of Museums, the New Jersey Association of Museums, and South Jersey Cultural Alliance.

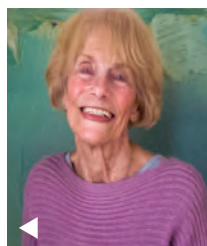


Ms. Cureton earned a B.A. in Folklore and Mythology from Harvard University, and an M.A. in Medieval Studies from the University of York in the U.K. She was recognized by the New Jersey Historical Commission with an Award of Recognition in 2003, and received the John Cotton Dana Award for her contributions to New Jersey museums from the New Jersey Association of Museums in 2002. A native of Seattle, Washington, she is now an enthusiastic resident of South Jersey, residing in Medford with her husband and two sons.

Lamont H. Czar, P.E., is the owner of Czar Engineering LLC, a full-service consulting engineering firm based in Egg Harbor Township, New Jersey. Mr. Czar has over thirty years of experience in the engineering field, with specialties in building and site structural engineering, project planning and development, and contract and construction management. He believes in finding unique solutions for projects—small or large, residential or commercial, historic or contemporary, public or private. Currently Mr. Czar is overseeing several projects along New Jersey's coast, including several historic properties.

Andrew deGruchy is the owner of LimeWorks.us, the nation's leading manufacturer and distributor of 'green' historic preservation and sustainable building mortars, plasters and paints based on lime and not Portland cement. His lime-based materials are used for durable, appropriate, time-tested historic masonry restoration campaigns. Due to the correlation between a lower embodied energy in production to final recycling of the limes, Andy also distributes these exceptional life-cycle materials for sustainable building systems which yield substantial CO₂ credits. In 1979, Andy received a full scholarship for a three-year program to study and practice masonry from the nation's oldest private trade school, The Williamson Free School of Mechanical Trades in Media, PA. founded in 1888. He received their "Key" award for the advancement of its founding ideals. He maintains a few specialty crews which for 28 years have restored hundreds of historic buildings in the Delaware and Lehigh Valleys of Pennsylvania. Andy holds lectures and training workshops on the subject of historic masonry restoration and sustainable building. Andy is active in promoting volunteerism to educate about and protect our natural and built environments. He finds that preserving our cultural resources as they are found and interpreted through regional vintage architecture, including our nation's historical burial grounds, is his best area of service to the conservation industry.

Elizabeth R. Del Tufo is a long-time resident of Newark and, as such, has championed preservation in the city for over 30 years. She has served as Director of Cultural Affairs for Essex County, Director of the Newark Boys Chorus School, and, now retired, serves as president of the Landmarks Committee and of the Mount Pleasant Cemetery Board of Trustees. She continues to lead tours of Newark through Newark Tours.com. She has won many awards for her effort including an honorary doctorate from NJIT for her community service.



Robert A. Dennin, Jr., BA, MA is a member of the National Guard Militia Museum of New Jersey's Board of Trustees and Chairman of the non-profit 501(c)3 foundation's Finance Committee in charge of fund raising. He has been a member of the Museum since 2000 and the Board of Trustees since 2004. He has also held various positions with the Museum including docent at the Sea Girt Museum, Newsletter editor and Sea Girt volunteer coordinator from 2001 to 2005, as well as participation on the Association Alliance, Membership, Finance and the Museum Assessment Program Committees. For his significant contributions to the Museum, he was presented in 2008 with the Museum's first annual Robert A. Dennin Minuteman Award, named in his honor. Mr. Dennin holds a Bachelor and Master Degree in Biology from Montclair State University, with additional study in molecular genetics at the University of Medicine and Dentistry of New Jersey in Newark. He retired after 29 years as a Senior Clinical Research Scientist, having conducted cancer and AIDS research at Roche Pharmaceuticals, with many scientific and clinical research presentations, abstracts and publications in numerous peer reviewed journals; as well as co-author of a book chapter on biotechnology. He is the recipient of the 1987 Hoffmann-LaRoche Clinical Research and Development Pursuit of Excellence Award for his research on Interleukin 2 adoptive immunotherapy in cancer. Mr. Dennin also volunteers pro bono services mentoring minority owned small businesses in Monmouth County.



Ulysses Grant Dietz has been the curator of Decorative Arts at The Newark Museum since 1980. The curator of over 100 exhibitions during his tenure, Mr. Dietz is particularly proud of his work on The Newark Museum's 1885 Ballantine House, which was re-interpreted and restored as the centerpiece of the decorative arts department in 1994. In 1997 Mr. Dietz was the project director for *The Glitter & The Gold: Fashioning America's Jewelry*, the first-ever exhibition and book on Newark's once-vast jewelry industry. He was the curator of *Great Pots: Contemporary Ceramics from Function to Fantasy* in 2003, an exhibition of the Museum's studio ceramics for which he wrote the catalogue. For the Museum's centennial he organized *Masterpieces of Art Pottery, 1880-1930*, for which he also wrote the catalogue. Also in 2009 he co-wrote *Dream House: The White House as an American Home*, published by Acanthus Press, NY.

Ben Donsky is a Project Manager with Biederman Redevelopment Ventures Corporation. While at BRV, Mr. Donsky has worked on public space, business improvement district, and capital improvement projects in New York City, Los Angeles, Miami, Atlanta, and Newark, among many other cities. Most recently, he created the largest Wi-Fi network in New York City in partnership with Google, and designed and implemented the programming scheme at the new Klyde Warren Park in downtown Dallas. He has consulted prominent real estate developers on mixed-use projects, advised economic development corporations on commercial corridors, and worked with conservancies and friends groups to enhance their parks' operations. He also serves as Vice President of the Chelsea Improvement Company, creating and maintaining a complete streetscape, providing "clean and safe" services, and managing two public spaces. Prior to joining BRV, Mr. Donsky worked with various state agencies on statewide urban and suburban parking plans, and consulted developers and municipalities on downtown redevelopment.

Erin Dougherty has been the Executive Director of the Historical Society of Princeton since 2007. During her tenure the institution has opened a second operating site, the Updike Farmstead, which has served to expand the Society's public programming and mission. She received her M.A. in Education from The College of William and Mary, and her B.A. from the University of Michigan. Her tenure in history and art museums has spanned over 20 years.

David Flaharty has been an ornamental plasterer and architectural conservator for the past forty years. His work includes sculpture and conservation as well as research and development. The commissions of Mr. Flaharty have included work at the White House, the United States Capitol, houses of Richard H. Jenrette as well as numerous other historic houses, universities, churches and institutional buildings. He has contributed to and authored publications throughout his career one of which is the National Park Service Preservation Brief 23 on “Preserving Ornamental Plaster”.

J. Christopher Frey is President and Principal Conservator with Keystone Preservation Group, a Doylestown, PA based consulting firm which he established in 2005. He specializes in the analysis, interpretation and treatment of historic building materials, and in particular, finishes and masonry. Chris holds a B.A. in History from Dartmouth College (1992) and an M.S. in Historic Preservation from the University of Pennsylvania (1997). He has been designated as a Professional Associate with the American Institute for Conservation of Historic and Artistic Works. He is currently working on projects in Morris County, Hunterdon County, Mercer County, Bergen County and at the United States Capitol in Washington, DC.

Michael J. Gall, R.P.A., is a Senior Archaeologist at Richard Grubb & Associates, Inc., a cultural resource management firm in Cranbury, New Jersey and serves as an Adjunct Professor in the History and Anthropology Department at Monmouth University. He earned a B.A. in History and Anthropology, and later received an M.A. in History from Monmouth University. He is an executive board member of the Archaeological Society of New Jersey, is a member of the Register of Professional Archaeologists, and has worked as a professional archaeologist in the Middle Atlantic Region since 1998. His research foci include: farmstead, landscape, and early industrial archaeology in the Middle Atlantic Region; settlement patterns; and regional cultural development.

Kathleen P. Galop, Esq. serves as Principal of Preservation Possibilities LLC, a historic preservation consulting firm in Summit, NJ. An attorney with extensive experience and a national reputation in the administration of historic preservation projects, Ms. Galop is the recipient of a John F. Kennedy Library Foundation Research Grant and a White House Historical Association Grant to conduct



historic preservation research on Jacqueline Kennedy. Her research was published in the National Trust for Historic Preservation’s forum journal in May 2006. Kathleen conducted research at The Colonial Williamsburg Foundation during the Fall 2011 as a Gilda Lerner Fellow. She is an Adjunct Professor in the Certificate in Historic Preservation Program at Drew University (Madison, NJ). Ms. Galop is recognized as an expert in the creation/development of historic and cultural landscapes. She prepared the Nomination placing Branch Brook Park (Essex County Park System) on the State and National Registers of Historic Place, she co-authored the Nomination of Anderson Park in Montclair, NJ (Essex County Park System) to the State and National Registers and she recently prepared the Nomination of Briant Pond Park (Union County Park System). Ms. Galop is development consultant to The Newark Museum for its historic properties, including the National Historic Landmark John Ballantine House. She is or has been a trustee of several groups, including the National Association for Olmsted Parks, NJ Historic Trust, and Branch Brook Park Alliance. Ms. Galop has received several awards for her historic preservation work. She was elected to a life term on the Board of Governors of The Dickinson School of Law of The Pennsylvania State University, where she established the Galop Fund for the Preservation of the Rare Book and Archives Collection. She received her J.D. degree from The Dickinson School of Law of The Pennsylvania State University in Carlisle, Pennsylvania and her B.A. degree in History from Caldwell College for Women in Caldwell, New Jersey.

Paul E. Gaudette, FAPT, FACI Since joining Wiss, Janney, Elstner Associates, Inc., over twenty-five years ago, Mr. Gaudette has been involved in a wide range of investigations and repair projects. The majority of his experience includes investigative work and design of repairs for various types of modern and historic concrete structures. Paul’s work on John J. Earley structures includes Baha’i House of Worship in Wilmette, Illinois; Edison Monument in Menlo Park, New Jersey; and the Fountain of Time in Chicago, Illinois. Other prominent concrete structures on which Paul has worked include the; Promontory Apartments building in

Chicago, Illinois by Mies Van der Rohe; Franklin Delano Roosevelt Memorial in Washington, D.C.; Jackson Park 63rd Street Beach House, the Railway Exchange Building, Continental Bank Building, Union Station, and the Fountain of Time in Chicago; Wright Brother Memorial Visitor's Center in Kill Devil Hills, North Carolina; the Centre Street Bridge in Calgary, Alberta; the Queen Anne Water Tank in Seattle, Washington; and the Jefferson Davis Monument in Fairview, Kentucky. Mr. Gaudette has authored numerous papers on repair of modern and historic concrete, and is co-author of Preservation Briefs 15: Preservation of Historic Concrete published by the National Park Service. Paul has also co-authored a chapter on reinforced concrete in Twentieth-Century Building Materials. Mr. Gaudette is a Fellow of the Association for Preservation Technology International (APT) and has been a course leader and instructor for five multi-day Repair of Historic Concrete courses for APT, most recently in November 2010. Mr. Gaudette was also the lead instructor for two-day Repair of Modern Historic Concrete course at the 2004 DOCOMOMO Conference in New York City. Mr. Gaudette is also a Fellow of the American Concrete Institute and Chair of the Concrete Repair Committee. He is an instructor for the ACI Seminar Series, Concrete Repair Basics Seminar and ACI Two-Day Concrete Repair Workshop, which are one and two-day courses on concrete repair presented in cities across the United States. Mr. Gaudette is present Chair of ACI Committee 546, Repair of Concrete and member of several other committees related to repair of concrete.

Ilene Grossman-Bailey, RPA, Ph.D. grew up in Cherry Hill, New Jersey and has spent many summers at the Jersey shore. Dr. Grossman-Bailey received a B.A. from the College of New Jersey and her M.A. (1998) and Ph.D. (2001) from Temple University. Her dissertation, "The People Who Lived By the Ocean": Native American Resource Use and Settlement in the Outer Coastal Plain of New Jersey, examined 12,000 years of coastal New Jersey prehistory. She is a Senior Archaeologist for Richard Grubb & Associates (RGA) and has directed a variety of archaeological investigations in New Jersey, Delaware, Pennsylvania, and other states. She has also taught anthropology and archaeology at Temple, Kutztown, and Monmouth Universities and Delaware County Community College. Her research interests include the archaeology of prehistoric Native American occupation in



the coastal portions of New Jersey, Native Americans during the Colonial Period, shell middens and the prehistoric use of marine shell in New Jersey, and the history of archaeology. She has organized numerous symposia and presented at regional and national conferences. Her publications include "Ernest William Hawkes (1883-1957): The Beginnings of an Archaeological Biography". She is on the executive board of the Archaeological Society of New Jersey and lives in historic Morrisville, PA, where she is on the board of the Historic Morrisville Society.

Dorothy P. Guzzo was appointed Executive Director of the New Jersey Historic Trust in February, 2008. Under the direction of a Board of Trustees, appointed by the Governor, the Historic Trust was created in 1967 to advance historic preservation in New Jersey for the benefit of future generations through education, stewardship and financial investment programs that save our heritage and strengthen our communities. The Historic Trust is responsible for administering the historic preservation matching grant and loan programs. From 1995 to 2008, Ms. Guzzo served as the Deputy State Historic Preservation Officer for the State of New Jersey. As the federally recognized State Historic Preservation Office, she oversaw the New Jersey and National Registers of Historic Places, project certification to qualify for Investment Tax Credits, certifying local governments for implementing programs on the municipal level, historic and archaeological resource inventory and resource protection through state and federal regulations. Prior to her appointment in 1995, Ms. Guzzo was employed by the same Department as a grants and project manager overseeing the restoration and development of the state-owned historic sites.

Ms. Guzzo previously served on the not-for-profit Board of Directors for the Crossroads of the American Revolution Association, ex officio to the New Jersey Historical Commission, New Jersey Historic Trust and Main Street New Jersey Board of Advisors and was the past Chair of the Alice Paul Institute. She has held elected office, and served on her municipal planning board and local historic preservation commission. Ms. Guzzo served on the New Jersey Heritage Tourism Task Force, charged with creating a Heritage Tourism Master Plan for the state of New Jersey.

Samer Hanini, co-founder and principal of Hanini Group, LLC, has his B.A. in Architecture and Master's in Infrastructure Planning from NJIT. At Hanini Group Samer oversees Business Development and Construction Management while also integrating efficient design. Samer is passionate about sustainable design with a focus on green methods in development and construction, such methods can be seen in his most recent project the Hotel Indigo. The former National Bank Building is designed to achieve LEED certified Platinum, which will set the standard for green building in Newark, NJ. Samer's dedication to producing high-end, cost effective buildings, while preserving historical integrity, defines the vision of the firm. Samer has extensive experience in land development, design, value engineering, and property management; including managing construction projects in Manhattan for publicly traded Hill International. Samer sits on the board of several committees including the NJIT School of Management, School of Architecture, and Newark Preservations Landmark Committee and has lead several community projects such as The Fulton Street Tree Planting. Samer continues to find new ways to help the community and better Newark's neighborhoods as a whole.

Faye Harwell, FASLA, is a founding director of Rhoadside & Harwell Landscape Architects & Planners. She is a nationally recognized designer of prominent sites throughout the United States and abroad, earning over 30 awards for excellence in design. Ms. Harwell is renowned for her expertise in the restoration of historic landscapes, and for her breakthrough concepts in sustainable design. Known as a leader in the restoration of Olmsted parks, her work was recognized in Essex County Branch Brook Park, which received a 2012 award from the President's Advisory Council on Historic Preservation. Her international work includes embassies and Design Excellence guidelines for U.S. diplomatic facilities worldwide, with built projects spanning the globe. Ms. Harwell received her M.L.A. from the University of Pennsylvania, and has taught, lectured, and published widely. She currently continues the restoration of Branch Brook Park, and is working on the U.S. Supreme Court landscape in Washington D.C., the Summerhouse at the U.S. Capitol Grounds and the U.S. Embassy in Jakarta, Indonesia, featured in November 2012 Metropolis Magazine.



Max Hayden, AIA, presently chairs the Hopewell Historic Preservation Commission and has served as a member for many years. He has owned his own architectural practice—Maximilian Hayden Architect Inc.—since 1991 and prior, was an architect with Michael Graves and Associates. His practice includes private residences, historic rehabilitation and renovations and additions. Hopewell's design guidelines have won award from local and statewide organizations.



The Rev. Dr. Robert Higgs serves as pastor of the First Presbyterian Church of Elizabeth (FPCE). It is the oldest English-speaking congregation in New Jersey, founded in 1664 by settlers authorized by King Charles II to start a new colony south of New York. He is also the Executive Director of the Old First Historic Trust, a 501(c)(3) nonprofit charged with restoring the FPCE campus and developing a variety of cultural, historical, and community services for the City of Elizabeth and surrounding area.



Jean Howson has been Principal Archaeologist at The RBA Group for 17 years. Her research on historic sites has ranged from sugar plantations in the Caribbean, to the colonial African Burial Ground in New York. The archaeology of 19th-century urban neighborhoods has been a staple of her professional career.



Richard Hunter, Ph.D., R.P.A. is founder and President of Hunter Research, a historical and archaeological consulting firm based in Trenton. He holds a Ph.D. in geography from Rutgers University, an MA in archaeological science from Bradford University, England, and a BA in archaeology and geography from Birmingham University, England. He has worked as an archaeological and historic preservation consultant in the Middle Atlantic region since 1977, serving on the New Jersey Historic Sites Review Board and as Co-President of Preservation New Jersey, Chair of the Hopewell Township Historic Preservation Commission and Chair of the Trenton Downtown Association. He is a Mercer County Cultural and Heritage Commissioner and for many years has maintained a strong interest in the protection, interpretation and promotion of the history and archaeology of the Abbott Farm National Historic Landmark.



Wansoo Im, MURP, Ph.D. is the president and founder of VERTICES, LLC. He is also the founder of The Center for Community Mapping, a non-profit organization. Wansoo Im specializes in developing decision support systems using a public participatory approach and interactive web-based



geographical information systems (GIS). He is an Assistant Professor at Meharry Medical College, and an adjunct faculty member at Rutgers, The State University of New Jersey. He received his Masters in Urban and Regional Planning from the University of North Carolina at Chapel Hill and his Ph.D. from the Edward J. Bloustein School of Planning and Public Policy. He teaches interactive mapping skills to teachers, high school and college students, and members of community organizations across the country. Dr. Im consults with non-profit and governmental agencies about creating and using graphical databases to address community issues. He has in-depth knowledge about building transportation decision support systems and modeling watershed resources and has been invited as a keynote speaker for various health and GIS conferences. Dr. Im is most proud of his web portal, <http://www.imrivers.com>, which is currently being used by multiple environmental organizations across the United States. His work on community participatory internet mapping was featured in *The New Yorker* magazine in 2006 and *The New York Times* in 2008.

Mary D. Krugman, JD, MS Hist. Pres. is the President and Principal Preservation Specialist of Mary Delaney Krugman Associates, Inc. (MDKA), Historic Preservation Consultants, founded in 1995 and based in Montclair, NJ. She holds a Master's Degree in Historic Preservation from Columbia University, Graduate School of Architecture, Planning, and Preservation and the degree of Juris Doctor from the Columbus School of Law, The Catholic University of America, Washington, D. C. She specializes in architectural history and regulatory compliance for historic properties, including projects garnering federal rehabilitation tax credits and those being reviewed by local land use boards. Ms. Krugman is temporarily on leave from MDKA while she assists the disaster recovery efforts as Sr. Historic Preservation Specialist for FEMA in New Jersey.

Brent Leggs is a field officer in the National Trust's Boston Field Office, where he developed the Northeast African American Historic Places Outreach Program, and its theme, the business of preservation. A Harvard Loeb Fellow, he works to build the capacity of volunteer leaders from diverse communities saving places important in American history. Recently, he's convened annual leadership workshops

at Brown University for African American site administrators on sustainable business models. In his position and as an advisor to the 1772 Foundation, he is helping to save and preserve places from the past that reflect the Black experience in America. During his Loeb Fellowship, Brent explored new models that combine historic preservation, revitalization, and site management to support financial and architectural sustainability at African American historic places. In December 2012, his long-awaited publication published by the National Trust is titled, *Preserving African American Historic Places*, is available in both print and as a PDF.

Cate Litvack became president of the Advocates for New Jersey History in January 2013. She served for seven years as the first executive director of the Crossroads of the American Revolution Association, the non-profit organization for New Jersey's National Heritage Area, and retired in 2012. She is currently a trustee of the Old Barracks Museum. A former mayor of Princeton Township she has been an active land preservationist in New Jersey and is a trustee and former chairman of the D&R Greenway Land Trust. She is also a founder of the Princeton Area Community Foundation and a founder and former president of The Princeton-Pettoranello Sister City Foundation. In recognition of the latter activity she was awarded the Cavaliere Order of Merit of the Republic of Italy. Litvack has extensive marketing experience gained as a partner in Kea Wines, as vice president of marketing for govONE Solutions, LLP in New York and as vice president of J&M Advertising in Princeton. She has been an active participant in New Jersey civic and political life for many years and resides in Princeton with her husband, Jim, an economist.

Catharine Longendyck, a third-generation resident of the Forest Hill neighborhood of Newark, NJ, is the co-author with Kathleen P. Galop of Arcadia Publication's *Images of America: Branch Brook Park*, and the pair is currently working on a new *Images of America* book on the Forest Hill Historic District. Catharine is a retired corporate executive and is currently occupied with renovating her 100+ year old home in Forest Hill. She also trains her Golden Retrievers for dog obedience competitions and is an officer of the K-9 Obedience Training Club of Essex County, NJ.

Scot Mackey, having worked as a corporate government relations specialist for TRW in Washington, D.C. and for Waste Management, brought to the firm a corporate perspective. His detailed knowledge of specific industries helped to



broaden a firm which heretofore had been accustomed to representing a wide array of corporations, trade associations and professional societies.

Prior to joining MBI-GluckShaw, Scot was Director of Regulatory Affairs for the Chemical Industry Council of NJ. He gained insights into the complexities of how corporations process political challenges and eventually develop strategies, a process which added great value to the services which his firm provides.

Scot also served on a Governor's transition team for the Department of Environmental Protection. He is a partner in the firm and a graduate of Dickinson College.

Michael J. Margulies, AIA, a Principal and co-founder of Eclectic Architecture, LLC, has over two decades of experience in architecture, historic preservation and traditional trades. His extensive involvement with design, architectural conservation, consultation, grant writing and public speaking is complemented by his field experience which focused on carpentry and timber framing. He has been a presenter at the Drew University Historic Preservation Certificate Program and the Rutgers University Cultural Heritage & Preservation Studies Program. Michael is a licensed architect in New Jersey, New York and Pennsylvania and runs Eclectic Architecture with his wife and partner, Jessica P. Margulies, RA, AIA, out of their converted 1837 barn in Pohatcong Township, Warren County, New Jersey. Eclectic Architecture received a New Jersey State Historic Preservation Award in 2011 and 2012.

Douglas C. McVarish is principal of West Jersey Historical Research, a cultural resources consulting firm, and of YourTownApps LLC, a smartphone application development company specializing in apps for heritage tourism, general tourism, community information, and museums. He holds a graduate degree in planning from the University of Virginia and a graduate degree in historic preservation from the University of Vermont. Mr. McVarish has over twenty years of professional experience as an architectural historian. He is a resident of Collingswood.

Michael Meyer was appointed by Mayor Cory Booker to the position of Director of Housing and Real Estate in February 2007 for the City of Newark. Prior to coming to the City of Newark, Mr. Meyer was the Assistant Director of Housing in the City of San Jose overseeing one of the largest affordable housing production programs in California, resulting in the development of over 12,000 new units of high quality, affordable housing. In San Jose,

Mr. Meyer supervised the implementation of programs to help low-income homeowners, individuals and families at risk of homelessness, and programs to assist teachers and others to purchase homes. Prior to San Jose, Mr. Meyer served as the Deputy General Manager of the New York City Housing Authority, the largest housing authority in the country, serving an estimated 600,000 residents of New York City. In that capacity, he supervised over \$400 million annually in capital improvements, including the construction or renovation of over 60 community centers in all five boroughs. Mr. Meyer has an M.P.P. degree from Harvard University's Kennedy School of Government and an M.A. from the University of Wisconsin. He received his B.A. from the University of Vermont.

Bill Mikesell is an architect and planner who earned a Bachelor of Architecture from the University of Cincinnati. Later academic involvement included teaching in the United Kingdom at the Architectural Association, and in the United States at CUNY and NJIT, and he has lectured at Pratt, Yale, Penn, RPI, and Universidad de Morelos in Cuernavaca. He has worked on adaptive reuse and preservation projects in Ohio, England, New Jersey, and New York. While living in London, Mr. Mikesell worked to prevent demolition of Covent Garden and on the conversion of Manchester's Cotton Exchange into a theater. With nearly four decades of practice in Newark, he has worked on commercial, residential, and educational projects both new and old. Working with preservation tax credits since their inception in 1976, Mr. Mikesell has had an opportunity to see the development of these incentives. His firm's redesign of the Union Building in Newark's Four Corners Historic District won the NJ Historic Preservation Award for historic rehabilitation and adaptive reuse, and an Award of Merit from "Best of NY Construction." His firm, Mikesell & Associates, provides technical assistance for façade improvements to property owners in historic retail corridors funded by Newark's Urban Enterprise Zone. As president of Newark Preservation and Landmarks Committee, Mr. Mikesell was instrumental in the creation of Newark's downtown historic districts, providing local, state, and federal regulatory review of development and rehabilitation in these areas. As an architect and planner, Mr. Mikesell has provided professional services to Newark's Department of Housing and Economic Development, Department of Engineering, and the Landmarks Commission. Working on Newark's 2012 Master Plan, he coordinated contributions on neighborhood,



historic, and cultural elements. Mr. Mikesell is currently appointed Planner to Morristown's Planning Board and reviews architectural projects in their historic districts. As a LEED Professional, he is committed to sustainable design of buildings and neighborhoods.

Michael J. Mills, FAIA, is a Partner with Mills + Schnoering Architects, LLC, and has devoted more than twenty-five years to the preservation, restoration and adaptive use of some of the region's most significant historic structures. He is the Partner in Charge of the design of Life Safety Improvements for the Statue of Liberty National Monument for the National Park Service. Mr. Mills has served as Chair of the Advisory Group of the AIA Historic Resources Committee and is a past president of Preservation New Jersey, the statewide non-profit preservation organization. He is a national peer reviewer for the GSA Design Excellence program, and a long-time member of the NJ Uniform Construction Code Advisory Board. He has lectured at Princeton University's School of Architecture and Urban Planning and at the Association of Preservation Technology's (APT) international conference, and serves as Associate Graduate Faculty in the Rutgers University Cultural Heritage and Preservation Studies Program. Mr. Mills received his Bachelor of Arts degree in Architecture and Urban Planning from Princeton University; his Master of Science in Historic Preservation from the Graduate School of Architecture and Planning at Columbia University; and completed postgraduate work at the International Center for the Study of Preservation and Restoration of Cultural Property in Rome, Italy.

Linda Morgan, AICP, is principal of LPM Strategies, a DBE firm that provides consulting services in predevelopment, public policy and urban affairs. She also works for the RBH Group in Newark, NJ. Ms. Morgan has over 25 years' experience in urban planning, brownfields redevelopment, real estate development and project management of complex redevelopment projects in the New York-New Jersey region. Representative New Jersey projects include securing financial incentives for the Teachers Village and Military Park West projects in downtown Newark, managing predevelopment of the Jersey Gardens Mall and Bayonne golf course brownfield redevelopment projects, and spearheading the Newark Downtown District and Lincoln Park Arts Districts. Ms. Morgan, AICP, holds a BA in



Government from Smith College and an MPA in Public Affairs and Urban Planning from the Woodrow Wilson School at Princeton University. She is active in community affairs and serves on the NJ Council for the Humanities, the Newark Museum Council and as President of the board of GlassRoots, a nonprofit youth arts leadership organization in downtown Newark.

Architect Karen Nichols, FAIA is the Managing Principal of Michael Graves & Associates (MGA), which has been the primary architect for Newark Museum since Michael Graves' original master plan in the late 1960s. She has been working with the Museum since she joined MGA in 1977 and has produced two master plans. She was in charge of the major renovation of 1982-89, which won a National AIA Honor Award. Numerous subsequent projects at Newark Museum include renovations, historic preservation and concepts for a major expansion. Other cultural clients include the Detroit Institute of Arts, the Whitney Museum and Riverbend Music Center in Cincinnati.

Meme Omogbai Currently the Chair of the Board of Directors of the 104-year-old American Alliance of Museums, the umbrella group for all museums in North America, Meme Omogbai, MBA and CPA was appointed Chief Operating Officer in 2001 after serving as Deputy Director for Finance and Administration upon joining The Newark Museum in May 1995. Additionally, she serves as a trustee on the Board of Trustees of the Newark Museum Association and has been the Assistant Treasurer since 1995. Prior to her Museum appointment, she was Senior Educational Policy Advisor in New Jersey after serving concurrently as Deputy Assistant Chancellor, in the New Jersey Department of Higher Education and Chief Operating Officer of the New Jersey Higher Education Assistance Authority as well as the Student Assistance Board, with responsibility for over \$6.5 billion in assets. She continues her nonprofit sector stewardship on the Boards of several entities including, The New Jersey Historic Trust, the Advisory Board of Montclair State University, St. Vincent Academy, The Newark Regional Business Partnership and Committees of the New York State Society of CPAs. Honored in 2010 as one of the 25 Influential Black Women in Business (USA) by The Network Journal, she completed post graduate education programs at Harvard University and the J. Paul Getty Trust Leadership Institute, where she also served on the faculty.

David Orr is a recently converted classical archaeologist who after spending two years as a Rome Prize Fellow in Classics at the American Academy in Rome took a position in American Studies at the University of Pennsylvania in 1973. He has never (well, almost never) looked back and has published numerous books and articles, staged several museum exhibits, directed many excavations, contributed to many films, worked in the NPS, and mentored scores of students, all in American Studies! A happy septuagenarian, he still labors at his first love, education, at Temple University.



Matthew E. Pisarski, AICP, PP serves as Principal Planner for the County of Cumberland, New Jersey where he has administered the County Agriculture Development Board and the Cultural & Heritage Commission for the past 11 years. With a Master's degree in Historic Preservation from the University of Pennsylvania, Matthew has specialized in land preservation and community planning, emphasizing the comprehensive role of preservation of place in community development. He has served a Trustee for the Advocates for New Jersey History and Cumberland County Historical Society and currently serves on the Greenwich Township Sustainability Committee and as a Trustee of the South Jersey Cultural Alliance. Matthew provides consulting services through Pine Mount Consulting.



Laura M. Poll has been the Librarian/Archivist at the Monmouth County Historical Association in Freehold, New Jersey since 2008. Previously, she was their Project Archivist and then Assistant Librarian/Photograph Archivist. Prior to employment at MCHA, she was Registrar of Collections at Historic Allaire Village (Farmingdale, N.J.). Laura is a consultant for the Caucus Archival Projects Evaluation Service (CAPES) program in New Jersey, a member of the Mid-Atlantic Regional Archives Conference and the New Jersey Studies Academic Alliance, a participant on the Publications & Scholarship sub-committee of New Jersey 350, and a judge for the regional contests at National History Day. She earned her M.L.I.S. at Rutgers University and B.A. at Montclair State University.



Niquole Primiani is the chief programs officer for the New Jersey Historical Commission where she oversees the awards, scholarly and nonprofit professional development programs. Prior to joining the Commission in 2010, Primiani served as the Community Arts Program Officer at the New Jersey State Council on the Arts (2004-2010) directing its Local Arts Grant, Arts Institutional and Financial

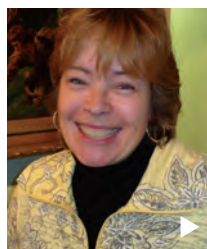


Stabilization and Critical Financial Services Programs. In 2008 Primiani launched the Building Arts Participation Grant Program designed to assist arts organizations to develop strategies to better engage patrons in the arts. Upon receiving her M.A. from the University of Chicago in 2001, Primiani served as a research assistant for the Impressionist and Modern Art Department at Sotheby's International in Chicago and New York. When she returned to New Jersey she began her nonprofit cultural career and has held positions at the Middlesex County Cultural and Heritage Commission, ArtPride New Jersey and the New Jersey Cultural Trust.

Denise Richards, PE is an Associate in the Philadelphia office of Keast & Hood Co., Structural Engineers. Beyond her work on the Statue of Liberty, Denise's experience covers a vast array of structural systems on a diverse set of buildings including office, educational, laboratory and cultural buildings in the US, Europe and the Middle East. Prior to rejoining Keast & Hood Co. in 2009, she served as one of the structural project managers on the Crystal Bridges Museum of American Art in Bentonville, Arkansas.



Carlos Rodriguez, PP/AICP is a Princeton, NJ based urban designer, planner and educator. He maintains a private consulting practice and teaches a graduate planning studio at Rutgers. He has worked in senior management positions in the private, public and non-profit sectors. He is a charter member of the Congress for a New Urbanism, Past President of APA-NJ and a board member of the Society for American City and Regional Planning History. His work has been recognized with a CNU Charter Award. He has an Architecture degree from the Lisbon School of Fine Arts and an MCRP from Rutgers University.



Bernadette M. Rogoff has been Curator of Museum Collections at Monmouth County Historical Association for more than twenty years. She's produced over forty changing exhibitions and oversees five historic houses, five changing exhibition galleries, and a collection of more than 30,000 objects and artifacts. This year, Mrs. Rogoff completed years of research on New Jersey portrait artist Micah Williams with an exhibition and publication, the first to examine the life and work of this exceptional artist. Mrs. Rogoff has lectured at Princeton University, the American Folk Art Museum, and in 2011 presented "Civil War Voices" at the New Jersey History Conference.



Jennifer Rothschild, Esquire is the immediate past chair of the Closter Historic Preservation Commission in northern Bergen County, New Jersey. She obtained her law degree from New York University and a Certificate in Historic Preservation from Drew University. Under her leadership, two important historic sites were added to Closter's Landmark list: the Resolvent Nagel House and Farmstead and the Centennial AME Zion Church.



Randy Ruth is a graduate of Thaddeus Stevens College of Technology in Lancaster, PA, with an Associate's degree in Masonry Construction Technology. He is a member of the Preservation Trades Network and has attended Frankfort, KY (2010), Lancaster, PA (2011), and Charleston, SC (2012) IPTW events, contributing as both a demonstrator and home brewer. Currently, Randy is employed by LimeWorks.us as a laboratory technician, providing technical help in the masonry preservation industry and researching historical masonry materials and applications. He is a regular contributor to the Greater Philadelphia Preservation Alliance homeowner workshops and Thaddeus Stevens College of Technology Masonry program. In his off time, Randy can often be found exploring and researching subterranean urban environments and ancient urban waterways.



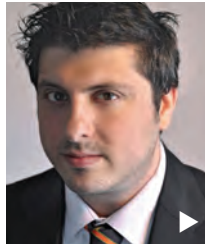
Linda Shockley is president of the Lawnside (N.J.) Historical Society, which owns the Peter Mott House Underground Railroad Museum in her hometown. The Mott House was placed on the National Register of Historic Places in 1994. The town is a historically African-American community founded by free people and freedom-seekers. Mrs. Shockley administered the restoration of the 1845 farmhouse which opened as a museum in October 2001. The Society received grants from the New Jersey Historic Trust, New Jersey Historical Commission, New Jersey Council for the Humanities and National Trust for Historic Preservation, and as a member of its African-American Historic Sites Network, received two grants from the 1772 Foundation. Mrs. Shockley has served as secretary for Preservation New Jersey and on the New Jersey Sites Review Board. She earned a B.A. in journalism from the University of Bridgeport in 1976. Before joining the News Fund in 1988, she was an education reporter, news editor, bureau chief, columnist and city editor for Gannett Suburban Newspapers in Westchester County, New York.



Vincent Solomano, BS, MA, CPT, serves as Command Historian of the New Jersey National Guard and Director of the National Guard Militia Museum of New Jersey. In addition to a B.S. in Political Science from the University of Scranton, Vincent is a graduate of the U.S. Army Engineer School at Fort Leonard Wood, Missouri. He is the recipient of the Harry S. Truman Scholarship and the J. William Fulbright Fellowship. As a Fulbright Fellow, he earned his M.A. in European Studies from the University of Amsterdam for his study of Islamic radicalization in the Netherlands. He is a member of the Center for World War II Studies and Conflict Resolution Executive Council, the National Guard Museum Advisory Council, American Legion Raritan Post No. 23, the Netherland Club of New York, and the Netherland-America Foundation.

Diane Sterner is Director of the Housing and Community Development Network. This statewide association of 150 community-based development organizations was created in 1989 to enhance the efforts of these groups to create affordable housing and revitalize their communities, and to improve the climate for community development in New Jersey. Diane has worked in the community development field for more than 25 years. Prior to joining the Network in 1990, she was a community development consultant working primarily with nonprofit housing developers. She also served as Director of Housing and Economic Development for La Casa de Don Pedro, a community-based organization in Newark. Diane has helped found and co-chairs several other statewide organizations working on issues critical to the future of New Jersey communities, including the Coalition for Affordable Housing and the Environment, which promotes the revitalization of cities, the protection of natural resources and the creation of affordable housing. She serves on the boards of trustees of New Jersey Policy Perspective, the National Housing Institute, and New Jersey Citizen Action. Most recently, as a James A Johnson Fellow, she helped found the National Alliance of Community Economic Development Associations (NACEDA), a new voice for community development practitioners in Washington, DC, and a vehicle for bringing together state and citywide CDC associations to exchange best practices and support each other's work.

Jamie Sunyak, PP/AICP has been employed by the Township of Raritan (Hunterdon County) since March 2009 as the Township Planner and Zoning Officer. She also serves as the Affordable Housing Liaison, and the Open Space Committee Liaison, as well as the Board of Adjustment Planner and Planning Board Planner. In 2012, Ms. Sunyak oversaw the Bloustein School Studio which focused on the Raritan River Greenway under the direction of instructor Carlos Rodriguez, P.P., A.I.C.P.; and in 2011, Ms. Sunyak oversaw the NJDOT Planning Partnership grant awarded to the Township which created a Township wide Bike and Pedestrian Master Plan adopted as part of the Raritan Township Master Plan in 2012. Ms. Sunyak balances the needs of the business/development community, while promoting and protecting the rural and environmentally sensitive nature of Raritan Township. With her guidance, Raritan Township has the opportunity to be a leader not only on its own, but as part of the larger Greater Flemington region. Prior to being employed by Raritan Township, Ms. Sunyak was a Project Manager employed by several planning consultant firms. She has almost 15 years of planning experience.



Charles Tantillo, Director for Facility Operations, has thirty years' experience in facilities management & building engineering services in major art & science museums in the NY/NJ Metropolitan area. He received his Bachelor of Mechanical Engineering from SUNY Maritime College in 1982, and holds the US Green Building Council's LEED Accredited Professional Certification. He is presently responsible for all operations functions for New Jersey's largest museum. This includes maintenance and operation of the physical plant buildings; electrical, mechanical, life safety, security, video surveillance and fire alarm systems; management of Custodial, Technical and Visitor Services.

Julia A. Taylor, AICP, LEED oversees Isles' neighborhood planning, affordable housing production, real estate development, property management, and urban agriculture activities. Ms. Taylor's previous work includes master planning and real estate development in rural and urban areas, research and social policy analysis, and program evaluation for low-income housing and energy efficiency programs in New Jersey, New York, Ohio, and Pennsylvania. Ms. Taylor is Co-Founder and President of SEE Lambertville, a community organization focused on sustainability, and serves on the Board of Trustees for the Hunterdon Land Trust and for the Coalition for Affordable Housing and the Environment. She

earned a Master of City Planning degree from the University of Pennsylvania and a BA in History with a Certificate in American Studies from Princeton University.

Jeremy E. Tenenbaum has been with Venturi, Scott Brown and Associates (now VSBA, LLC) since 2000. In addition to designing marketing and public relations materials, Jeremy has led and contributed to numerous graphic and exhibition projects for museum, academic, and institutional clients. His work includes two temporary storefront displays and a permanent mixed-media digital storefront for the Fabric Workshop and Museum; the inaugural exhibition for new display cases at Philadelphia International Airport; a three-story mural for the California NanoSystems Institute at the University of California, Santa Barbara; interpretive and building identification signage for the Millville Army Airfield Museum; a large exterior mural and lobby graphics for the Museum Place Post Office in Ft. Worth, TX; an exhibition at the University of Pennsylvania's Architectural Archives; three Canstruction builds supporting Philabundance; the urban Parking Day project; and graphics for countless VSBA publications, articles, posters, videos, advertisements, and other print and web productions. Jeremy is currently helping to design signage for the West Jersey Time Traveler initiative, which will identify fifteen historic sites across New Jersey's Cumberland County and link to interpretive podcasts. Jeremy also works independently with commercial and institutional clients to craft signage, advertisements, branding, and websites. For over a decade, Jeremy has designed large-scale storefront window displays for VSBA's office in Philadelphia. In addition to displaying the firm's work in a variety of playful and distinctive ways, these exhibitions are often created in collaboration with outside institutions and artists, such as Philadelphia's Charter High School for Architecture and Design, the Fabric Workshop and Museum, the Fairmount Park Art Association, the Children's Aid Society, and fashion designer Nicole Miller (located across the street from our office). VSBA's storefront windows won a 2010 Jury Award from the Society for Environmental Graphic Design.

Audrey Tepper is a Historical Architect with the Technical Preservation Services Branch of the National Park Service (NPS) in Washington, DC. Ms. Tepper earned a Bachelor of Fine Arts from Cornell University and a Masters of Architecture from the University of Virginia. She has also

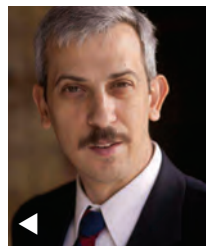
studied architectural conservation in both Italy and Scotland. Audrey has been employed by NPS for over 21 years and works on historic structures inside and outside of national parks. Her current office wrote and developed the Secretary of the Interior's Standards for Historic Preservation, the guiding principles behind sensitive preservation practice in the US today. They also write extensively on technical issues relating to historic preservation and administer the Federal Historic Preservation Tax Incentive Program, where the Federal government offers tax credits as a financial incentive to private property owners rehabilitating historic buildings. Ms. Tepper has extensive experience on how to interpret the Secretary's Standards, with special expertise in making historic buildings more sustainable.

Richard Veit, Ph.D., R.P.A. is Professor of Anthropology and Director of the Center for Excellence in Teaching and Learning at Monmouth University. Dr. Veit received his BA from Drew University in 1990, his MA in Historical Archaeology from the College of William and Mary in 1991 and his Ph.D. in Anthropology from the University of Pennsylvania in 1997. In 2007 he was the recipient of Monmouth University's distinguished teacher award and in 2012 he received Monmouth University's Donald Warnecke Award for outstanding service to the university. At Monmouth he teaches courses on archaeology, historical archaeology, New Jersey history, Native Americans, and historic preservation. He is the author of *Digging New Jersey's Past: Historical Archaeology in the Garden State* (Rutgers Press 2002). He and Mark Nonestied co-authored the book *New Jersey Cemeteries and Tombstones History in the Landscape* (Rutgers Press 2008) and with Maxine Lurie he edited *New Jersey: A History of the Garden State* (Rutgers Press 2012). He serves on the boards of the Society for Historical Archaeology, Council for Northeast Historical Archaeology, and the Archaeological Society of New Jersey. His research interests include the archaeology of Native-Americans in the colonial period, Dutch-American farmsteads, early American gravemarkers, and early American industries.

Keith I. Wasserman is an accomplished journalist and communications professional whose career has ranged from producing news broadcasts in major television and radio markets, to creating narrative-driven film, print and online communication pieces for international corporations and non-profit organizations. Wasserman earned a Bachelor's

Degree in Political Science from Rutgers University and a Master's Degree in Journalism from The Ohio State University. As a broadcast journalist, he spent more than a decade writing and producing television news and longer form documentary-style pieces for Philadelphia's KYW-TV (at the time, an NBC affiliate). Prior to that, he covered news for CBS radio affiliate, WCOL in Columbus, Ohio and has produced coverage from four national political conventions. Wasserman founded Shoot the Moon Communications in 1993 believing the same standards of clarity, credibility and creativity we expect from our most respected media organizations are just as critical in the creation of corporate, government and non-profit communications. Shoot the Moon clients have included national corporations and institutions (HP, AT&T, W.L. Gore, University of Pennsylvania Health System) as well as prominent regional organizations (SJ Healthcare, Bayshore Discovery Project, Southern Shore Region Tourism Council, Atwater Kent Museum, Delaware Lottery). Wasserman is the winner of a regional Emmy Award for excellence in television news coverage and a nominee for two others. He has been recognized by the Broadcast Designers of America for the creative use of graphics and animations in his productions. Most recently, Wasserman and STM were awarded New Jersey's Governor's Award—the highest recognition in broadcast tourism marketing for the creation of a series of spots highlighting the hidden treasures of Cape May and Cumberland Counties. Wasserman is currently Vice-President of the Jewish Federation of Cumberland, Salem and Gloucester Counties and a former trustee of Friends School Mullica Hill.

Donald Watson, FAIA, NCARB is an architect and author. His current work is focused on design for resilience and mitigation of buildings and communities to prepare for severe climate change and natural disasters. He is a member of the Board of Directors of the Natural Hazard Mitigation Association (NHMA) and a FEMA Subject Matter Expert in Building Technology and Community Design. He is former Visiting Professor Chair of Yale School of Architecture's Master of Environmental Design Program (1970-1990) and Professor and Dean Emeritus of Rensselaer Polytechnic Institute (1990-2000). He received the 2008 Leadership Award U.S. Green Building Council as an AIA/COTE founder and the 2002 Distinguished Professor

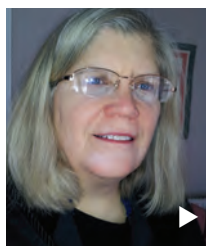
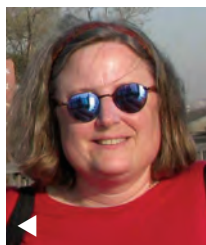


Award Association of Collegiate Schools of Architecture. In recognition of regional conservation initiatives in Connecticut, he received the 2012 Fairfield CT Citizen Conservationist of the Year Award. His firm, EarthRise design, has provided interpretive design and planning services for historic museums and properties, including Olana, Phipps Botanical Garden, Manitoga Russel Wright Design Center, and Gomez Mill House. Watson is editor of *Time-Saver Standards for Urban Design*, McGraw-Hill (2002) and co-author with Michele Adams, P.E. of *Design for Flooding: Architecture, Landscape and Urban Design for Resilience to Climate Change* (2010).

Anne E. Weber, FAIA, FAPT is a partner in Mills + Schnoering Architects, LLC in Princeton, NJ where she manages large-scale projects at significant historic structures such as the Statue of Liberty, Louis Kahn's Trenton Bath House, and the Edison Memorial Tower. Her work has been recognized with awards from the National Trust, the NJ Historic Preservation Office, and the Building Stone Institute.

Rebecca Yamin, Ph.D. is a historical archaeologist who has specialized in urban archaeology for the last 20 years. She guided the analysis of the 850,000 artifacts recovered on the Federal Courthouse site that was once part of the notorious Five Points neighborhood in lower Manhattan and also directed the analysis of material recovered on the Rte. 19 site in Paterson and on the Rte. 18/27 interchange site in New Brunswick. She holds a B.A. from the University of Pennsylvania and M.A. and Ph.D. degrees from New York University.

Ulana Zakalak, an award winning historic preservationist and adaptive reuse specialist, is principal of Zakalak Associates, LLC and Zakalak Restoration Arts LLC, with offices in Jersey City and Newark, New Jersey, and provides restoration services and preservation consulting for public, corporate and private clients. Since starting her consulting practice over twenty-five years ago, Ms. Zakalak has gained a reputation for her documentation and preservation of urban sites, in particular the built environment of the City of Newark. While working for the Newark Preservation and Landmarks Committee (NPLC), Zakalak was successful in qualifying prominent historic sites for acceptance to the New Jersey State and National Registers of Historic Places, including the Forest Hill, Weequahic Park, Military Park and Four Corners Historic Districts as well as countless individual historic sites. She is the tax credit consultant for some of the most prominent projects in Newark,



including Cass Gilbert's National State Bank Building which is currently being converted into a boutique hotel, the St. Francis Hotel, and the Columbian Block. Ms. Zakalak is also the author of the Historic Preservation Element of the new Newark Master Plan. As a consultant to BLT, a Connecticut-based real estate development firm, she is currently leading the transformation of the former Jersey City Medical Center into The Beacon condominium and rental complex in what has been widely recognized as the largest historic adaptive reuse project in the country. In 1991, Ms. Zakalak was honored with a Certificate of Appreciation from the NPLC for her "outstanding Contribution to the Preservation of Newark's past." In 2005, Zakalak Associates was presented with the New Jersey Historic Preservation Award for Historic Rehabilitation and Adaptive Reuse for the Union Building on Clinton Street in Newark. The project also won an Award of Merit from New York Construction Best of 2004 Awards. Ms. Zakalak also won the 2009 New Jersey Historic Preservation Award for the Restoration of the Rialto and Capitol Buildings at the Beacon, and in 2010, the New Jersey Historic Preservation Award for the Restoration of the John Frederick Peto House and Studio in Island Heights, NJ. Ms. Zakalak is a Trustee of the Jersey City Landmarks Conservancy. Ms. Zakalak holds a Bachelor of Arts degree in American History and Archaeology from Rutgers College, Rutgers University, and a Master of Science in Historic Preservation from the Columbia University Graduate School of Architecture, Planning and Historic Preservation.

Nancy L. Zerbe, a Metuchen-based historic preservation consultant, was instrumental in the revitalization of the Edison Memorial Tower site. From 2006 to 2012, Ms. Zerbe led the non-profit Edison Memorial Tower Corporation, organizing the planning and fundraising for the Tower restoration, coordinating the renovation of the Thomas Edison Center at Menlo Park museum, developing all new interpretive exhibits, and planning for the future of the site. Ms. Zerbe has thirty-five years of experience in historic preservation, including eight years as the New Jersey Historic Preservation Office Administrator/Deputy State Historic Preservation Officer. For the last nineteen years, she has served as President of ARCH2, Inc., a historic preservation firm. Ms. Zerbe was president of the Metuchen-Edison Historical Society, served on the New Jersey Heritage Tourism Task Force, and is currently a member of the Metuchen Historic Preservation Committee and the Middlesex County Cultural and Heritage Commission.

Even when
we're closed

Our arms are
open.

At TD Bank, we're
happy to support the
things that bring our
community together.



America's Most Convenient Bank®

1-888-751-9000 | www.tdbank.com



New Jersey's statewide partner of the
National Trust for Historic Preservation

PRESERVATION

n e w j e r s e y



Helping You Manage
Change and Preserve
Historic Character in
Your Community

***BE A PART OF PRESERVATION NEW JERSEY-
BECOME A MEMBER TODAY!***



310 West State Street, Trenton, NJ 08618
www.preservationnj.org • (609) 392-6409



Rutherford Hall 1902
Allamuchy Township, Warren County, NJ



Trinity Church 1919
Asbury Park, Monmouth County, NJ



Nathaniel Foster House 1724
Villas, Cape May County, NJ

Congratulations to the New Jersey Historic Trust's newest grant recipients!



Michael Calafati Architect, LLC

609-884-4922

www.calafati.com

NJ RA # AI-09029

Certificate of Authorization # AC-845 Exp. 01/2014



Downtown **WOODBURY'S** history is now your future!

The rehabilitation of G.G. Green will bring to life a vacant building in a central downtown neighborhood and provide 52 units of housing for senior residents in addition to 7,000 square feet of retail space.



Development

Contracting

Leasing

Sales

Management

More info at RPMDEV.COM or GGREENNJ.COM



Newark Penn Station, Newark, NJ



Thomas Edison National Historical Park, West Orange, NJ



Hoboken Terminal Complex, Hoboken, NJ

Proud to Support the

2013 NJ HISTORY AND HISTORIC PRESERVATION CONFERENCE

Architecture

Preservation

Planning & Urban Design

Interior Design

41 East 11th Street, New York, NY 10003

3307 M Street, NW, Suite 301, Washington, DC 20007

www.beyerblinderbelle.com



**Beyer
Blinder
Belle**

Architects & Planners LLP



Mary Delaney Krugman Associates, Inc.
 Historic Preservation Consultants
 62 Myrtle Avenue
 Montclair, NJ 07042
 973.746.2810

MDKA
 www.mdka.com

MID-ATLANTIC HISTORIC PRESERVATION SERVICES

DAVID KIMMERLY

dkimmerly@midatlantichps.com

(215) 740-1650

www.midatlantichps.com

- National Register Nominations
- Historic Districts
- Preservation Ordinances
- Historic Resource Surveys



WILLIAM NEUMANN
P H O T O G R A P H Y

96 CARMITA AVE. • RUTHERFORD, NEW JERSEY 07070 • (201)939-0370

*A historic preservationist who understands
 your need for professional photography!*

People, Properties and Projects...



www.NeumannPhoto.com
 fotogbill@aol.com



Preservation Partners

Deborah Marquis Kelly & Ellen Freedman Schultz
Historic Preservation Consultants

*Projects include: New Jersey Women's Heritage Trail;
 Assessment of State Historical Marker Programs;
 National Register nominations; and architectural surveys.*

P.O. Box 506, Crosswicks, NJ 08515
 609-291-9351 • kellybd1@verizon.net

Research~Writing~Oral History~Exhibitions~Grant Proposals~Planning

Howard L. Green
 3 Grant Avenue
 Highland Park, NJ 08904

732.247.2578
hlgreen@optonline.net
www.publichistorypartners.com

**Public History
 Partners**

Restoration Technologies

Of New Jersey LLC



Historic Restoration
 Timber Framing
 Building Relocation
 Historically Sensitive Demolition

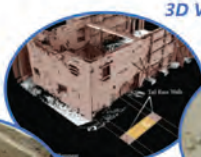
(908) 812 - 1003
www.restotechnj.com

URS
 Burlington

Archaeological
 Surveys



Historic Architectural
 Surveys



3D Visualization



Artifact Analysis

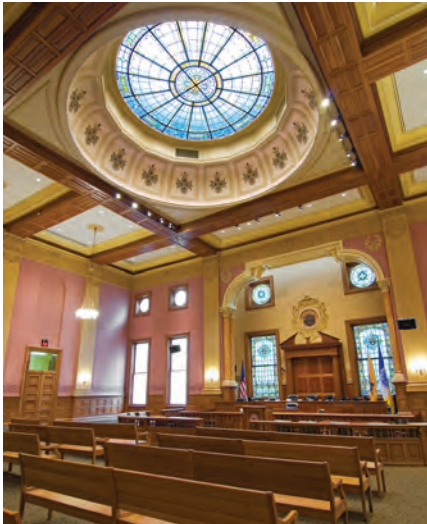


www.urs-burlington.com



Tuckerton Seaport & Baymen's Museum
 120 West Main Street | Tuckerton NJ 08087
 609-296-8868 | TuckertonSeaport.org

*A project of the Barnegat Bay Decoy & Baymen's Museum, Inc.
 Dedicated to preserving, presenting and interpreting the maritime
 history, artistry, heritage and environment of the Jersey Shore
 and the unique contributions of its baymen.*



HMR ARCHITECTS

Architecture • Planning • Interiors • Historic Preservation



609-452-1070

www.hmr-architects.com

CUSTOM LETTERED BRONZE PLAQUES

For Your HISTORIC HOME



ERIE LANDMARK COMPANY
NATIONAL REGISTER PLAQUES
MEDALLIONS TO ROADSIDE MARKERS

CALL FOR FREE BROCHURE
800-874-7848
WWW.ERIELANDMARK.COM



HUNTER RESEARCH HISTORICAL RESOURCE CONSULTANTS

offering services in:

Historical Research
Archaeological Investigations
Architectural Studies
Preservation Planning
Historic Exhibits
Educational Outreach

120 West State Street
Trenton, NJ 08608-1102

phone: 609.695.0122

fax: 609.695.0147

email: hri@hunterresearch.com

www.hunterresearch.com

Proud Sponsor



Luxury Rentals
(201) 654-3526
www.thebeaconjc.com

PRESERVING
THE *Past*

BUILDING
THE *Future*

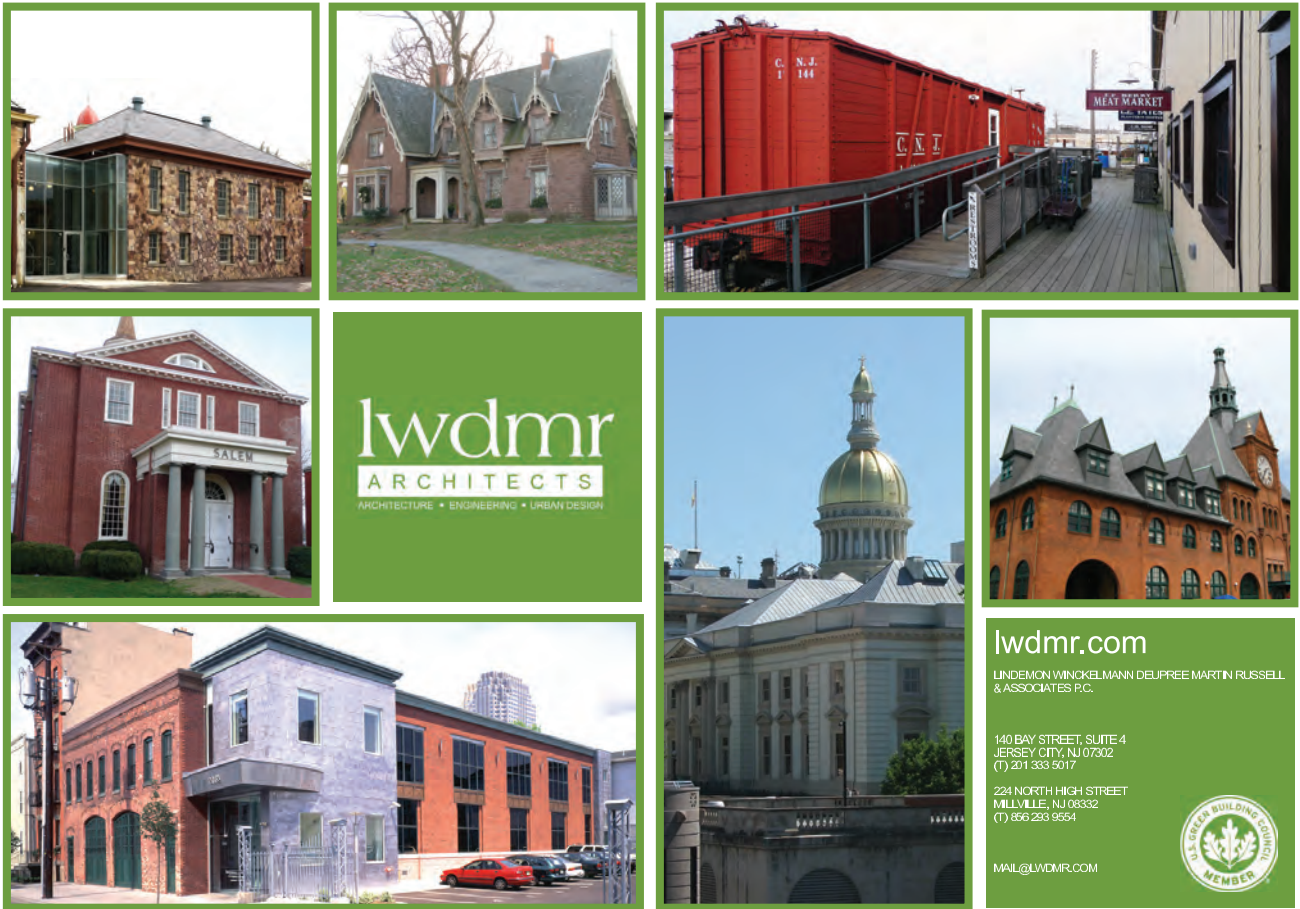
Precision
Building & Construction

Historic Preservation - meticulous craftsmanship
for authentic restorations

YESTERDAY, TODAY AND TOMORROW...
consistently delivering exceptional results:

- On time and on budget
- Highest quality workmanship
- 24/7 valued engineering
- Hands-on attention to every detail

732.302.9595
www.precisionbldg.com



PAGE AYRES COWLEY ARCHITECTS, LLC

A FULL SERVICE ARCHITECTURAL FIRM SPECIALIZING IN THE DESIGN, ADAPTIVE RE-USE, AND RESTORATION OF HISTORIC BUILDINGS



OLD EAGLE TAVERN
TRENTON, NEW JERSEY



THE TRENTON CITY
MUSEUM AT
ELLARSLIE MANSION
TRENTON, NEW JERSEY



PLAINFIELD CITY HALL
PLAINFIELD, NEW JERSEY

10 EAST 33RD STREET, NEW YORK, NEW YORK 10016
TEL. 212.673.6910 FAX. 212.673.6869 www.PAC-Architects.com

*Proud to sponsor the
2013 NJ History &
Historic Preservation
Conference*

*A full service governmental affairs
firm based in historic Trenton
representing clients for more than
thirty years*






SMITHVILLE HISTORIC PARK



TRENTON BATH HOUSE



VOORHEES CHAPEL AT RUTGERS



PEARL S. BUCK HOUSE

DESIGN-BUILD
HISTORIC
EDUCATION
SUSTAINABILITY
COMMUNITY
COMMERCIAL

AWARD-WINNING EXCELLENCE IN
DESIGN AND CONSTRUCTION SINCE 1990

WUASSOCIATES.COM











INFO@WUASSOCIATES.COM | 856-857-1639



Richard Grubb & Associates, Inc.
Cultural Resource Consultants



Services include:

-  Historical Research
-  Architectural Surveys
-  Investment Tax Credits
-  Historic Structures Reports
-  HABS/HAER Services
-  Preservation Planning
-  Archaeological Investigations
-  Exhibits and Historic Interpretation
-  Public Relations and Educational Programs
-  National & State Register Nominations

Specializing in Historic Preservation

259 Prospect Plains Road • Bldg D • Cranbury • NJ • 08512
609-655-0692 • Fax 609-655-3050 • mail@richardgrubb.com
www.richardgrubb.com





CROSSROADS of the
**AMERICAN
REVOLUTION**
NATIONAL HERITAGE AREA
www.RevolutionaryNJ.org

Discover Revolutionary New Jersey™



KEAST & HOOD CO.
Structural Engineers

*Proud supporters
of the
NJ Historic
Preservation
Conference*

*presenting
A New Strategy for
Access and Egress at the
Statue of Liberty
with project team lead
Mills + Schoeering Architects*



**New Construction • Renovation • Addition • Adaptive Reuse • Historic Preservation
Masonry Stabilization • Structural Intervention • Facade Inspection**

www.keasthood.com
Philadelphia | Washington



Dorothy W. Hartman

2 Millville Road
Millville National Historic District
Montague, NJ 07827

(973) 293-3684
(201) 841-2596 cell

historyinthemakingNJ@yahoo.com

historyinthemakingnj.com

FORD3

ARCHITECTS, LLC

- Architecture
- Historic Preservation
- Adaptive Reuse
- New Construction
- Sustainability
- Interior Design

32 Nassau Street Princeton, New Jersey 08542
609.924.0043 www.ford3.com



For Ready to go Replication Mortars

Historic Mortar Analysis Reports

Repoint - Build - Stucco - Plaster with NO Harmful Portland Cement or GGBS
215.536.6706

Searching for New Jersey History?

Visit www.lhsnj.org

The League of
Historical Societies
of New Jersey



Your doorway to
over 250 history
museums, libraries,
historic sites and
history events in
New Jersey.

Celebrating New Jersey's 350th Anniversary



*Best Wishes for a Successful
2013 History and
Historic Preservation Conference!
New Jersey Historic Trust
Board of Trustees*

Customer Loyalty
through Client Satisfaction

MASER
CONSULTING P.A.

Engineers & Design Professionals

100 American Metro Blvd.
Suite 152, Hamilton, NJ 08619
P: 609.587.8200

NJ ■ NY ■ PA ■ VA www.maserconsulting.com





Preservation Possibilities
Historic Preservation Consulting

Kathleen P. Galop, Esq.
Principal

18 Bank Street, Suite 1F
Summit, NJ 07901
908*517*1064 Phone
908*723*5504 Cell
kpgalop@att.net

**BRANCH
BROOK
PARK
ALLIANCE**
RESTORING THE PARK
RENEWING OUR SPIRIT

115 CLIFTON AVENUE
NEWARK, NEW JERSEY 07104
T: 973.268.2300
E: MAIL@BRANCHBROOKPARK.ORG
WWW.BRANCHBROOKPARK.ORG



Historic Preservation Planning

Cultural Resource
Management

Historic Architecture
& Design



2 N. Union Avenue • P.O. Box 1726
Cranford, NJ 07016 • 973-746-4911
www.chhistoricalarchitects.com
Thomas B. Connolly, A.I.A. • Margaret M. Hickey, R.A.

**ECLECTIC
ARCHITECTURE
LLC**
FINE DESIGN & HISTORIC PRESERVATION
RECIPIENT OF A 2011 & 2012 NEW JERSEY
STATE HISTORIC PRESERVATION AWARD
www.eclectitecture.com
info@eclectitecture.com
Phillipsburg, New Jersey
Phone: 908-387-8630

*With appreciation and compliments to
the NJ Historic Trust,
NJ Historical Commission,
NJ Historic Preservation Office,
Advocates for NJ History
and the Commonwealth of New Jersey
for presenting the
2013 "Enriching Place" Conference*

**Essex County Branch Brook Park is part
of the historic Essex County Park System.
Transportation for today's tour
is provided by the Essex County Division
of Cultural and Historic Affairs.**



Hon. Joseph N. DiVincenzo, Jr.
Essex County Executive and
the Board of Chosen Freeholders



Dr. and Mrs. Joseph E. Salvatore



Donna Ann Harris
Principal

*Historic Preservation
Heritage Tourism
Downtown Revitalization
Nonprofit Management*

422 South Camac Street, Philadelphia, PA. 19147
Phone 215-546-1988 Cell 267-251-5444
donna@heritageconsultinginc.com
www.heritageconsultinginc.com



Clarke Caton Hintz ● ● ■

Architecture
Planning
Landscape Architecture

ENDURING ARCHITECTURE
LIVABLE PLACES
SUSTAINABLE ENVIRONMENTS
TRENTON, NJ | CLARKECATONHINTZ.COM

732.938.2666

PROFESSIONAL ENGINEERS

Offering a full range of **Professional Engineering Services**

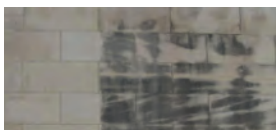
<p>Structural Analysis & Design</p> <ul style="list-style-type: none"> • New Construction • Feasibility Studies • Historical Preservation & Renovation • Renovations & Additions • Condition Assessment Reports 	<p>Mechanical, Electrical, Plumbing & Fire Protection</p> <ul style="list-style-type: none"> • Energy Management Systems • New Construction • Renovations & Additions • Value Engineering • LEED AP
---	---

Farmingdale, New Jersey • www.ksi-pe.com

CottageGardens
LANDSCAPE DESIGN.com
Historic garden plans & plants
973-673-2494
ptratebas@gmail.com

Chemical-Free, Eco-Friendly Specialty Cleaning

www.escaspecialclean.com 800-699-ESCA



These images are from the Daughters of the American Revolution Building in Washington, DC which was cleaned with IBIX Equipment and Carbonart media.

ESCA specializes in non-destructive specialty cleaning of historic works, buildings, ornamental hardware, statues, monuments, tombstones, and all delicate surfaces including limestone, marble and masonry.

The National Park Service, Architect of the Capitol and Philadelphia Museum of Art all use the equipment that we sell, service and rent.

Save the Date
2014 NJ HISTORY AND HISTORIC PRESERVATION CONFERENCE
June 5, 2014

DESIGN: ROBERT HARTMAN; MAJOR PHOTOGRAPHY: ROBERT HARTMAN, ERIC KOPPEL, NEWARK MUSEUM, BRIAN ROSE, STAR LEDGER/MITSU YASUKAWA

hanini

The Hanini Group, led by Principal's Samer and Thafer Hanini, has become a notable presence in Newark's development scene. Over the past 7 years, Hanini Group has completed over \$50 million worth of residential and mixed-use restoration and rehabilitation projects, bringing a creative and fresh design reminiscent of Manhattan loft style units to the forefront of Newark's downtown residential and mixed use markets market.

The Firm is known for its unique blend of vision and practicality bringing a new perspective to Newark's emerging development landscape.

The Isley Building (top) is a recently restored mixed use building which is now home to Brick City Bar and Grill, also has beautiful loft-style residential units on the 2nd -4th floor.

The Columbian Building (middle) originally constructed in 1890, and once a merchant loft, has been meticulously transformed into the popular franchise restaurant Dinosaur BBQ, also containing five floors of luxury residential apartments.

402 Broad Street (bottom right) was uninhabited for nearly thirty years, until The Hanini Group turned the property around and developed 402 Broad Street into four residential units and a street-level commercial space.

The Bowers Building (bottom left) is in the heart of the Four Corners historic district. This building offers eight beautiful apartments, with the ground level serving as home to the Newark Police Department Substation and Newark's first Rita's Italian Ice.

info@hanini.com



*Special thanks to
AIA New Jersey
for its continued generous
support of the
NJ History and
Historic Preservation
Conference*



AIA New Jersey

Preserving and Restoring Our Heritage



Whig Hall, Princeton University
(2009 Design Award winner)



Essex County Courthouse
(2005 Design Award Winner)

**We are America's Architects. We are committed to building
a better world. And we can only do it together.**

For more information please go to www.aia-nj.org