



## **Child Protection and Permanency**

# **Monthly Screening and Investigation Report January 2017**

Allison Blake, Ph.D., L.S.W.  
Commissioner

February 27, 2017



## Table of Contents

Table 1: NJ State Central Registry Activity: Monthly Child Abuse and Neglect Hotline Calls, Intakes and Assignments to Child Protection & Permanency (CP&P) Offices

---

Chart 1: CP&P Annual Trends in Child Protection Services (CPS) Reports and Child Welfare Services (CWS) Referrals

---

Table 2: Assignments to CP&P Offices: CPS Reports and CWS Referrals

---

Table 3: Source of CPS Reports and CWS Referrals

---

Table 4: Monthly Count of CPS Reports and CWS Referrals Assigned to Counties

---

Table 5: Monthly Count of CPS Reports and CWS Referrals Assigned to CP&P Local Offices

---

**Table 1: NJ State Central Registry Activity: Monthly Child Abuse and Neglect Hotline Calls, Intakes and Assignments to CP&P Offices<sup>1,2,7</sup>**

2016 - 2017	Hotline Call Activity				Intakes Recorded in NJ SPIRIT <sup>6,8</sup>												Assignments to CP&P Offices				
	Total Calls to SCR <sup>3</sup>	Abandon Calls <sup>4</sup>	Average Time to Answer (seconds)	Resulting NJS Intakes <sup>5</sup>	CPS Reports		CWS Referrals		No Action Required (NAR)		Related Information (RI)		Information & Referral (I&R)		Information Only (IO)		CPS Reports		CWS Referrals		Total
					n	%	n	%	n	%	n	%	n	%	n	%	n	%	n	%	
January 2016	13,499	551	40	14,655	4,686	32.0%	1,573	10.7%	282	1.9%	4,020	27.4%	1,482	10.1%	2,612	17.8%	4,686	74.9%	1,571	25.1%	6,257
February 2016	13,927	590	40	15,143	4,974	32.8%	1,620	10.7%	419	2.8%	3,836	25.3%	1,627	10.7%	2,667	17.6%	4,974	75.4%	1,622	24.6%	6,596
March 2016	14,064	446	32	15,619	5,000	32.0%	1,671	10.7%	428	2.7%	3,912	25.0%	1,812	11.6%	2,796	17.9%	5,000	75.0%	1,669	25.0%	6,669
April 2016	13,995	448	29	15,326	5,065	33.0%	1,541	10.1%	348	2.3%	3,774	24.6%	1,742	11.4%	2,856	18.6%	5,065	76.7%	1,542	23.3%	6,607
May 2016	14,389	413	26	15,806	5,238	33.1%	1,634	10.3%	393	2.5%	3,902	24.7%	1,852	11.7%	2,787	17.6%	5,238	76.2%	1,633	23.8%	6,871
June 2016	13,304	396	26	14,592	4,602	31.5%	1,460	10.0%	336	2.3%	3,687	25.3%	1,808	12.4%	2,699	18.5%	4,602	75.9%	1,461	24.1%	6,063
July 2016	11,304	338	25	12,531	3,663	29.2%	1,186	9.5%	295	2.4%	3,477	27.7%	1,376	11.0%	2,534	20.2%	3,663	75.5%	1,187	24.5%	4,850
August 2016	11,766	270	18	13,169	3,941	29.9%	1,308	9.9%	491	3.7%	3,311	25.1%	1,471	11.2%	2,647	20.1%	3,941	75.1%	1,307	24.9%	5,248
September 2016	13,277	383	25	14,637	4,654	31.8%	1,557	10.6%	305	2.1%	3,868	26.4%	1,699	11.6%	2,554	17.4%	4,654	74.9%	1,559	25.1%	6,213
October 2016	13,924	387	24	15,418	4,935	32.0%	1,623	10.5%	368	2.4%	4,100	26.6%	1,767	11.5%	2,625	17.0%	4,935	75.3%	1,622	24.7%	6,557
November 2016	13,310	441	30	14,666	4,677	31.9%	1,551	10.6%	300	2.0%	3,969	27.1%	1,667	11.4%	2,502	17.1%	4,677	75.1%	1,552	24.9%	6,229
December 2016	13,294	424	32	14,626	4,762	32.6%	1,579	10.8%	352	2.4%	3,916	26.8%	1,598	10.9%	2,419	16.5%	4,762	75.1%	1,580	24.9%	6,342
<b>January 2017</b>	<b>14,182</b>	<b>603</b>	<b>45</b>	<b>15,375</b>	<b>5,111</b>	<b>33.2%</b>	<b>1,708</b>	<b>11.1%</b>	<b>321</b>	<b>2.1%</b>	<b>4,221</b>	<b>27.5%</b>	<b>1,670</b>	<b>10.9%</b>	<b>2,344</b>	<b>15.2%</b>	<b>5,111</b>	<b>75.0%</b>	<b>1,708</b>	<b>25.0%</b>	<b>6,819</b>
	<b>13,403</b>	<b>438</b>	<b>30</b>	<b>14,736</b>	<b>4,716</b>	<b>32.0%</b>	<b>1,539</b>	<b>10.4%</b>	<b>357</b>	<b>2.4%</b>	<b>3,846</b>	<b>26.1%</b>	<b>1,659</b>	<b>11.3%</b>	<b>2,619</b>	<b>17.8%</b>	<b>4,716</b>	<b>75.4%</b>	<b>1,539</b>	<b>24.6%</b>	<b>6,255</b>
<b>Overall Total</b>	<b>174,235</b>	<b>5,690</b>		<b>191,563</b>	<b>61,308</b>		<b>20,011</b>		<b>4,638</b>		<b>49,993</b>		<b>21,571</b>		<b>34,042</b>		<b>61,308</b>	<b>75.4%</b>	<b>20,013</b>	<b>24.6%</b>	<b>81,321</b>

<sup>1</sup> Comes from three distinct sources: (1) the Automatic Call Distribution (ACD) phone system; which keeps a count of the number of calls and call routing; (2) Monthly NJSpirit Intakes; which record decision making on calls received by hotline screeners, and (3) NJSpirit extracts of assigned CWS Referrals and CPS Reports.

<sup>2</sup> The number of Intakes, CPS Reports, and CWS Referrals are based on an extract from NJSpirit. Data extracted by the Office of Research, Evaluation, and Reporting on **February 13, 2017** includes all Intakes, CPS Reports, and CWS Referrals received from **January 1, 2017 through January 31, 2017**.

<sup>3</sup> The number calls received through the ACD System that were directed to a screener from any call-in phone number.

<sup>4</sup> The number of calls received through the ACD System that are abandoned either while waiting in queue or while ringing.

<sup>5</sup> The number of Intakes entered in NJSpirit from the number of calls received.

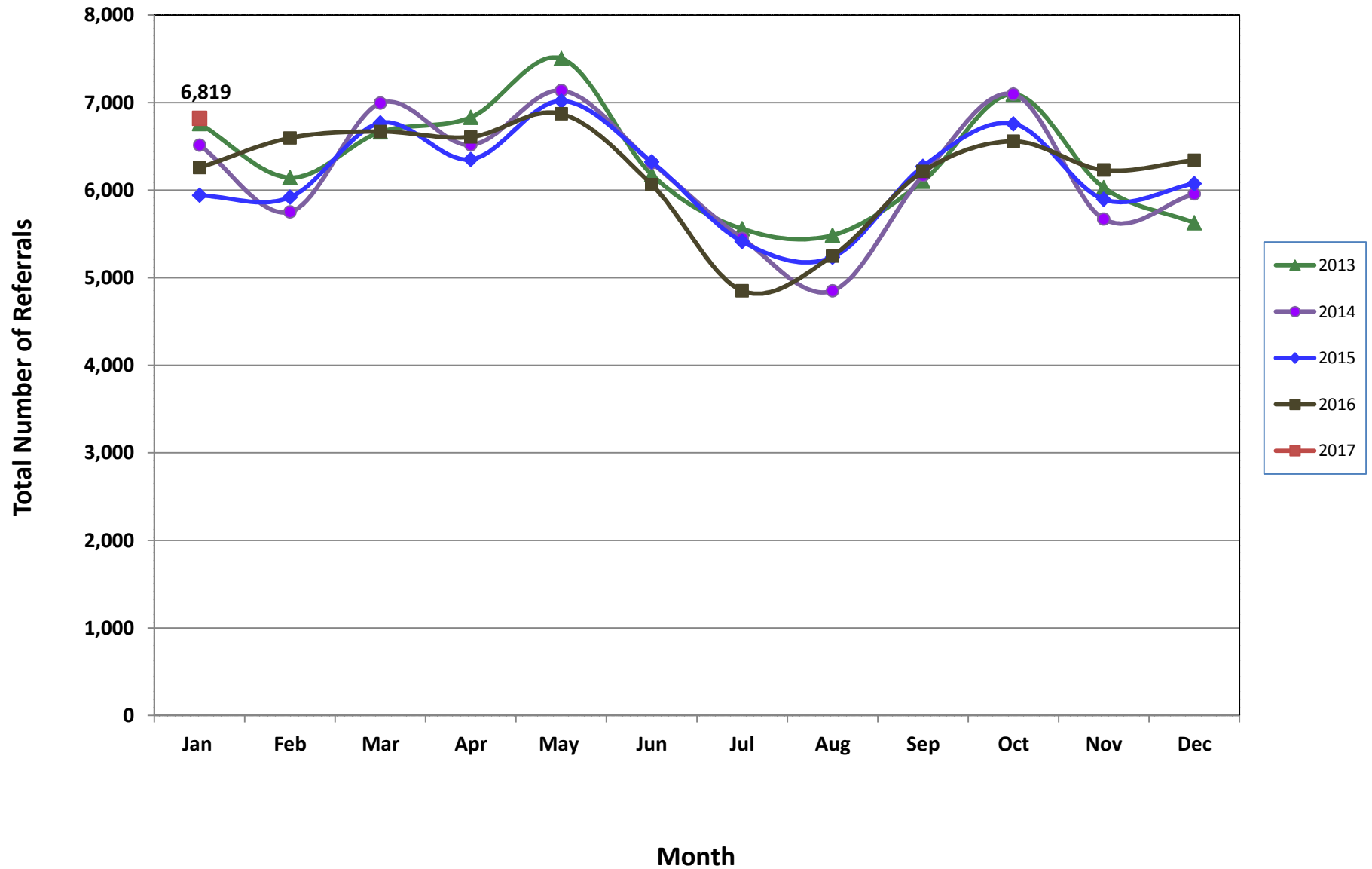
<sup>6</sup> The number of Intakes recorded in NJSpirit, by type of Intake. There is not a one-to-one relationship between an ACD call and an Intake; multiple calls to State Central Registry (SCR) may result in a single Intake, or one call may result in multiple Intakes.

<sup>7</sup> Intake: The process of documenting: a report of alleged abuse or neglect of a child (CPS); a request for services on behalf of a child, or a referral of a child for services (CWS); a call in which the caller provides additional or clarifying information about a current service case or active investigation (RI); informing a caller of, or referring a caller to, services available from other private or public sources (I&R); a call that requires no action by CP&P (NAR); or a response to a simple inquiry (IO).

<sup>8</sup> NJ SPIRIT: NJ Statewide Protection Investigation and Reporting Information Tool case management system



### CP&P Annual Trends in CPS Reports and CWS Referrals



The data contained in this report is considered preliminary and as a result, these figures might be different than the final reported figures. The data is produced for continuous quality improvement.

**Table 2: Assignments to CP&P Offices: CPS Reports and CWS Referrals<sup>1</sup>**

Intake Date <sup>3</sup>		CPS Reports <sup>2</sup>	CWS Referrals <sup>2</sup>	Total Assignments <sup>2</sup>
2013	Jan 2013	5,464	1,296	6,760
	Feb 2013	4,966	1,177	6,143
	Mar 2013	5,355	1,309	6,664
	Apr 2013	5,430	1,402	6,832
	May 2013	5,993	1,510	7,503
	Jun 2013	4,947	1,230	6,177
	Jul 2013	4,330	1,228	5,558
	Aug 2013	4,330	1,155	5,485
	Sep 2013	4,851	1,251	6,102
	Oct 2013	5,614	1,481	7,095
	Nov 2013	4,694	1,334	6,028
	Dec 2013	4,397	1,229	5,626
	<b>Total</b>	<b>60,371</b>	<b>15,602</b>	<b>75,973</b>
2014	Jan 2014	5,097	1,416	6,513
	Feb 2014	4,457	1,295	5,752
	Mar 2014	5,408	1,586	6,994
	Apr 2014	5,049	1,467	6,516
	May 2014	5,501	1,635	7,136
	Jun 2014	4,796	1,517	6,313
	Jul 2014	4,202	1,247	5,449
	Aug 2014	3,629	1,222	4,851
	Sep 2014	4,668	1,498	6,166
	Oct 2014	5,509	1,586	7,095
	Nov 2014	4,254	1,416	5,670
	Dec 2014	4,509	1,447	5,956
	<b>Total</b>	<b>57,079</b>	<b>17,332</b>	<b>74,411</b>
2015	Jan 2015	4,549	1,391	5,940
	Feb 2015	4,574	1,345	5,919
	Mar 2015	5,187	1,580	6,767
	Apr 2015	4,967	1,384	6,351
	May 2015	5,457	1,561	7,018
	Jun 2015	4,887	1,436	6,323
	Jul 2015	4,140	1,273	5,413
	Aug 2015	3,978	1,256	5,234
	Sep 2015	4,776	1,495	6,271
	Oct 2015	5,139	1,619	6,758
	Nov 2015	4,417	1,477	5,894
	Dec 2015	4,530	1,544	6,074
	<b>Total</b>	<b>56,601</b>	<b>17,361</b>	<b>73,962</b>

**Table 2: Assignments to CP&P Offices: CPS Reports and CWS Referrals<sup>1</sup>**

Intake Date <sup>3</sup>		CPS Reports <sup>2</sup>	CWS Referrals <sup>2</sup>	Total Assignments <sup>2</sup>
<b>2016</b>	Jan 2016	4,686	1,571	6,257
	Feb 2016	4,974	1,622	6,596
	Mar 2016	5,000	1,669	6,669
	Apr 2016	5,065	1,542	6,607
	May 2016	5,238	1,633	6,871
	Jun 2016	4,602	1,461	6,063
	Jul 2016	3,663	1,187	4,850
	Aug 2016	3,941	1,307	5,248
	Sep 2016	4,654	1,559	6,213
	Oct 2016	4,935	1,622	6,557
	Nov 2016	4,677	1,552	6,229
	Dec 2016	4,762	1,580	6,342
	<b>Total</b>	<b>56,197</b>	<b>18,305</b>	<b>74,502</b>
<b>2017</b>	<b>Jan 2017</b>	<b>5,111</b>	<b>1,708</b>	<b>6,819</b>
	<b>Total</b>	<b>5,111</b>	<b>1,708</b>	<b>6,819</b>
<b>Grand Total</b>		<b>235,359</b>	<b>70,308</b>	<b>305,667</b>

<sup>1</sup>Source of Data: NJ SPIRIT

<sup>2</sup>A CPS Report or a CWS Referral may include multiple children in a family, with one or more allegation or request for services. In these cases, each CPS Report or CWS Referral is counted once - the CPS Report or the CWS Referral is the unit of analysis rather than the child.

<sup>3</sup>Prior to January 2014, the number of CPS Reports and CWS Referrals was based on the type of assignment of the CPS Report or CWS Referral. Beginning in January 2014, the number of CPS Reports and CWS Referrals is based on the number of CPS Reports and CWS Referrals received.

**Table 3: Source of CPS Reports and CWS Referrals**

	Source	Jan 2016	Feb 2016	Mar 2016	Apr 2016	May 2016	Jun 2016	Jul 2016	Aug 2016	Sep 2016	Oct 2016	Nov 2016	Dec 2016	Jan 2017		13 Month Total	
CPS Reports and CWS Referrals	School Staff	1,569	1,900	1,690	1,646	1,765	982	143	87	1,150	1,639	1,628	1,614	1,952	29%	17,765	22%
	Healthcare Provider	830	852	892	895	823	814	771	811	775	837	799	846	873	13%	10,818	13%
	Law Enforcement	910	953	1,052	1,030	1,056	1,152	1,048	1,093	1,013	1,049	989	936	992	15%	13,273	16%
	Government Agency	412	394	448	410	419	439	407	509	445	446	399	384	453	7%	5,565	7%
	Parent	529	504	503	566	597	546	521	591	555	517	507	569	544	8%	7,049	9%
	Relative/Friend/Neighbor	446	454	424	473	553	540	472	544	594	506	431	443	444	7%	6,324	8%
	Anonymous	628	612	676	662	777	697	560	611	710	642	605	666	654	10%	8,500	10%
	CP&P	113	133	155	104	133	120	112	132	125	123	117	99	122	2%	1,588	2%
	Court/Legal	119	132	154	137	141	124	143	130	135	124	98	142	126	2%	1,705	2%
	Community Group/Individual	294	274	262	269	236	238	262	286	272	257	260	251	280	4%	3,441	4%
	Facility Staff (incl Correctional Facility)	91	80	76	88	64	68	70	94	95	97	85	85	98	1%	1,091	1%
	Child (Self)	41	37	36	46	37	38	46	50	37	41	41	41	34	0%	525	1%
	Other	259	253	286	257	252	285	274	297	287	266	252	255	232	3%	3,455	4%
	Daycare/Babysitter	16	18	15	24	18	20	21	13	20	13	18	11	15	0%	222	0%
	<b>Total</b>		<b>6,257</b>	<b>6,596</b>	<b>6,669</b>	<b>6,607</b>	<b>6,871</b>	<b>6,063</b>	<b>4,850</b>	<b>5,248</b>	<b>6,213</b>	<b>6,557</b>	<b>6,229</b>	<b>6,342</b>	<b>6,819</b>		<b>81,321</b>

**Table 4: Monthly Count of CPS Reports and CWS Referrals Assigned to Counties**

County														Average Number of Assignments Last 13 Months	Dec 16 to Jan 17 Numerical Difference
	Jan 2016	Feb 2016	Mar 2016	April 2016	May 2016	Jun 2016	Jul 2016	Aug 2016	Sep 2016	Oct 2016	Nov 2016	Dec 2016	Jan 2017		
Atlantic	251	284	265	250	291	221	184	234	252	285	243	239	241	249	-44
Bergen	333	392	369	321	385	354	251	264	340	370	352	384	423	349	53
Burlington	275	315	309	321	321	260	238	262	309	293	325	259	333	294	40
Camden	558	551	527	573	608	532	391	465	534	537	536	557	539	531	2
Cape May	83	65	79	94	82	67	71	78	73	78	68	63	68	75	-10
Cumberland	195	179	206	219	245	202	184	183	209	201	230	229	277	212	76
Essex	685	701	752	743	717	644	534	573	626	713	659	709	722	675	9
Gloucester	251	252	285	267	233	234	212	223	244	266	224	282	272	250	6
Hudson	424	450	412	403	481	400	304	279	403	450	389	433	449	406	-1
Hunterdon	53	58	46	62	38	42	36	38	44	36	46	54	46	46	10
Mercer	265	263	276	278	282	255	227	234	272	230	280	224	288	260	58
Middlesex	419	439	479	492	470	387	325	331	426	449	379	441	468	423	19
Monmouth	328	413	361	373	366	353	272	327	347	382	332	348	391	353	9
Morris	238	228	217	222	247	228	146	153	225	245	214	227	218	216	-27
Ocean	403	378	366	365	415	354	316	344	353	408	364	384	416	374	8
Passaic	421	504	510	455	456	401	299	331	397	471	439	431	518	433	47
Salem	94	67	94	89	82	80	63	67	89	78	66	60	93	79	15
Somerset	141	160	165	152	169	160	139	112	149	158	184	164	147	154	-11
Sussex	95	113	105	94	88	91	90	87	101	80	96	104	101	96	21
Union	299	331	350	336	373	295	255	244	323	316	312	306	341	314	25
Warren	93	87	77	99	106	88	62	78	97	97	84	79	108	89	11
<b>County Subtotals</b>	<b>5,904</b>	<b>6,230</b>	<b>6,250</b>	<b>6,208</b>	<b>6,455</b>	<b>5,648</b>	<b>4,599</b>	<b>4,907</b>	<b>5,813</b>	<b>6,143</b>	<b>5,822</b>	<b>5,977</b>	<b>6,459</b>	<b>5,878</b>	<b>316</b>
Central Region IAIU	44	53	46	59	55	53	33	54	52	63	57	59	41	51	-22
Metro Region IAIU	43	60	64	60	68	61	36	32	46	65	48	45	61	53	-4
Northern Region IAIU	58	58	66	71	70	66	27	45	62	76	70	52	65	60	-11
Southern Region IAIU	79	64	76	90	73	92	44	72	66	68	89	79	76	74	8
<b>IAIU Subtotals</b>	<b>224</b>	<b>235</b>	<b>252</b>	<b>280</b>	<b>266</b>	<b>272</b>	<b>140</b>	<b>203</b>	<b>226</b>	<b>272</b>	<b>264</b>	<b>235</b>	<b>243</b>	<b>239</b>	<b>-29</b>
<b>Unable to Determine<sup>1</sup></b>	<b>128</b>	<b>126</b>	<b>165</b>	<b>115</b>	<b>149</b>	<b>140</b>	<b>110</b>	<b>137</b>	<b>168</b>	<b>140</b>	<b>143</b>	<b>129</b>	<b>113</b>	<b>136</b>	<b>-27</b>
<b>Other Offices</b>	<b>1</b>	<b>5</b>	<b>2</b>	<b>4</b>	<b>1</b>	<b>3</b>	<b>1</b>	<b>1</b>	<b>6</b>	<b>2</b>	<b>0</b>	<b>1</b>	<b>4</b>	<b>2</b>	<b>2</b>
<b>Grand Total</b>	<b>6,257</b>	<b>6,596</b>	<b>6,669</b>	<b>6,607</b>	<b>6,871</b>	<b>6,063</b>	<b>4,850</b>	<b>5,248</b>	<b>6,213</b>	<b>6,557</b>	<b>6,229</b>	<b>6,342</b>	<b>6,819</b>	<b>6,255</b>	<b>262</b>

<sup>1</sup>CPS Reports or CWS Referrals not assigned to an office through the Assignment Designee, but were assigned to an office for an assessment or investigation.





**Table 5: Monthly Count of CPS Reports and CWS Referrals Assigned to CP&P Local Offices**

County	Local Office	Type of Referral	Jan 2016	Feb 2016	Mar 2016	Apr 2016	May 2016	Jun 2016	Jul 2016	Aug 2016	Sep 2016	Oct 2016	Nov 2016	Dec 2016	Jan 2017	Total
ATLANTIC	Atlantic East	CPS	110	133	144	97	129	108	90	102	109	127	116	118	107	1,490
		CWS	43	34	27	35	41	34	25	44	38	34	42	33	27	457
		<b>Total</b>	<b>153</b>	<b>167</b>	<b>171</b>	<b>132</b>	<b>170</b>	<b>142</b>	<b>115</b>	<b>146</b>	<b>147</b>	<b>161</b>	<b>158</b>	<b>151</b>	<b>134</b>	<b>1,947</b>
	Atlantic West	CPS	70	88	71	95	94	66	51	72	82	101	60	75	73	998
		CWS	28	29	23	23	27	13	18	16	23	23	25	13	34	295
		<b>Total</b>	<b>98</b>	<b>117</b>	<b>94</b>	<b>118</b>	<b>121</b>	<b>79</b>	<b>69</b>	<b>88</b>	<b>105</b>	<b>124</b>	<b>85</b>	<b>88</b>	<b>107</b>	<b>1,293</b>
	County Totals	CPS	180	221	215	192	223	174	141	174	191	228	176	193	180	2,488
		CWS	71	63	50	58	68	47	43	60	61	57	67	46	61	752
		<b>Total</b>	<b>251</b>	<b>284</b>	<b>265</b>	<b>250</b>	<b>291</b>	<b>221</b>	<b>184</b>	<b>234</b>	<b>252</b>	<b>285</b>	<b>243</b>	<b>239</b>	<b>241</b>	<b>3,240</b>
BERGEN	Bergen Central	CPS	128	107	121	101	134	121	63	73	90	104	104	125	127	1,398
		CWS	39	51	48	32	40	39	37	29	28	34	40	44	52	513
		<b>Total</b>	<b>167</b>	<b>158</b>	<b>169</b>	<b>133</b>	<b>174</b>	<b>160</b>	<b>100</b>	<b>102</b>	<b>118</b>	<b>138</b>	<b>144</b>	<b>169</b>	<b>179</b>	<b>1,911</b>
	Bergen South	CPS	121	174	150	136	162	143	109	115	157	160	161	153	174	1,915
		CWS	45	60	50	52	49	51	42	47	65	72	47	62	70	712
		<b>Total</b>	<b>166</b>	<b>234</b>	<b>200</b>	<b>188</b>	<b>211</b>	<b>194</b>	<b>151</b>	<b>162</b>	<b>222</b>	<b>232</b>	<b>208</b>	<b>215</b>	<b>244</b>	<b>2,627</b>
	County Totals	CPS	249	281	271	237	296	264	172	188	247	264	265	278	301	3,313
		CWS	84	111	98	84	89	90	79	76	93	106	87	106	122	1,225
		<b>Total</b>	<b>333</b>	<b>392</b>	<b>369</b>	<b>321</b>	<b>385</b>	<b>354</b>	<b>251</b>	<b>264</b>	<b>340</b>	<b>370</b>	<b>352</b>	<b>384</b>	<b>423</b>	<b>4,538</b>
BURLINGTON	Burlington East	CPS	117	127	105	131	128	84	94	94	92	105	126	104	118	1,425
		CWS	32	39	38	32	39	34	34	33	49	41	33	30	45	479
		<b>Total</b>	<b>149</b>	<b>166</b>	<b>143</b>	<b>163</b>	<b>167</b>	<b>118</b>	<b>128</b>	<b>127</b>	<b>141</b>	<b>146</b>	<b>159</b>	<b>134</b>	<b>163</b>	<b>1,904</b>
	Burlington West	CPS	92	109	124	130	117	109	87	101	121	106	118	92	125	1,431
		CWS	34	40	42	28	37	33	23	34	47	41	48	33	45	485
		<b>Total</b>	<b>126</b>	<b>149</b>	<b>166</b>	<b>158</b>	<b>154</b>	<b>142</b>	<b>110</b>	<b>135</b>	<b>168</b>	<b>147</b>	<b>166</b>	<b>125</b>	<b>170</b>	<b>1,916</b>
	County Totals	CPS	209	236	229	261	245	193	181	195	213	211	244	196	243	2,856
		CWS	66	79	80	60	76	67	57	67	96	82	81	63	90	964
		<b>Total</b>	<b>275</b>	<b>315</b>	<b>309</b>	<b>321</b>	<b>321</b>	<b>260</b>	<b>238</b>	<b>262</b>	<b>309</b>	<b>293</b>	<b>325</b>	<b>259</b>	<b>333</b>	<b>3,820</b>
CAMDEN	Camden Central	CPS	127	119	104	136	123	122	92	97	115	146	121	114	106	1,522
		CWS	34	34	44	36	38	53	36	41	40	26	39	37	38	496
		<b>Total</b>	<b>161</b>	<b>153</b>	<b>148</b>	<b>172</b>	<b>161</b>	<b>175</b>	<b>128</b>	<b>138</b>	<b>155</b>	<b>172</b>	<b>160</b>	<b>151</b>	<b>144</b>	<b>2,018</b>
	Camden East	CPS	108	106	104	114	123	94	86	102	104	107	98	114	126	1,386
		CWS	28	27	16	27	33	28	31	21	34	32	34	43	43	397
		<b>Total</b>	<b>136</b>	<b>133</b>	<b>120</b>	<b>141</b>	<b>156</b>	<b>122</b>	<b>117</b>	<b>123</b>	<b>138</b>	<b>139</b>	<b>132</b>	<b>157</b>	<b>169</b>	<b>1,783</b>
	Camden North	CPS	104	105	102	132	115	95	56	79	97	101	95	102	102	1,285
		CWS	40	45	46	27	47	34	18	39	42	28	34	36	32	468
		<b>Total</b>	<b>144</b>	<b>150</b>	<b>148</b>	<b>159</b>	<b>162</b>	<b>129</b>	<b>74</b>	<b>118</b>	<b>139</b>	<b>129</b>	<b>129</b>	<b>138</b>	<b>134</b>	<b>1,753</b>
	Camden South	CPS	85	86	77	79	97	80	56	67	86	67	89	78	73	1,020
		CWS	32	29	34	22	32	26	16	19	16	30	26	33	19	334
		<b>Total</b>	<b>117</b>	<b>115</b>	<b>111</b>	<b>101</b>	<b>129</b>	<b>106</b>	<b>72</b>	<b>86</b>	<b>102</b>	<b>97</b>	<b>115</b>	<b>111</b>	<b>92</b>	<b>1,354</b>
	County Totals	CPS	424	416	387	461	458	391	290	345	402	421	403	408	407	5,213
		CWS	134	135	140	112	150	141	101	120	132	116	133	149	132	1,695
		<b>Total</b>	<b>558</b>	<b>551</b>	<b>527</b>	<b>573</b>	<b>608</b>	<b>532</b>	<b>391</b>	<b>465</b>	<b>534</b>	<b>537</b>	<b>536</b>	<b>557</b>	<b>539</b>	<b>6,908</b>
CAPE MAY	Cape May	CPS	61	51	57	72	68	51	51	65	62	62	48	53	52	753
		CWS	22	14	22	22	14	16	20	13	11	16	20	10	16	216
		<b>Total</b>	<b>83</b>	<b>65</b>	<b>79</b>	<b>94</b>	<b>82</b>	<b>67</b>	<b>71</b>	<b>78</b>	<b>73</b>	<b>78</b>	<b>68</b>	<b>63</b>	<b>68</b>	<b>969</b>
	County Totals	CPS	61	51	57	72	68	51	51	65	62	62	48	53	52	753
		CWS	22	14	22	22	14	16	20	13	11	16	20	10	16	216
		<b>Total</b>	<b>83</b>	<b>65</b>	<b>79</b>	<b>94</b>	<b>82</b>	<b>67</b>	<b>71</b>	<b>78</b>	<b>73</b>	<b>78</b>	<b>68</b>	<b>63</b>	<b>68</b>	<b>969</b>
CUMBERLAND	Cumberland East	CPS	59	52	48	64	81	61	46	40	48	40	58	70	70	737
		CWS	12	13	16	18	14	16	18	20	17	16	18	10	26	214
		<b>Total</b>	<b>71</b>	<b>65</b>	<b>64</b>	<b>82</b>	<b>95</b>	<b>77</b>	<b>64</b>	<b>60</b>	<b>65</b>	<b>64</b>	<b>76</b>	<b>80</b>	<b>96</b>	<b>951</b>
	Cumberland West	CPS	99	96	116	102	115	101	96	102	113	109	126	111	143	1,429
		CWS	25	18	26	35	35	24	24	21	31	36	28	38	38	379
		<b>Total</b>	<b>124</b>	<b>114</b>	<b>142</b>	<b>137</b>	<b>150</b>	<b>125</b>	<b>120</b>	<b>123</b>	<b>144</b>	<b>145</b>	<b>154</b>	<b>149</b>	<b>181</b>	<b>1,808</b>
	County Totals	CPS	158	148	164	166	196	162	142	142	161	149	184	181	213	2,166
		CWS	37	31	42	53	49	40	42	41	48	52	46	48	64	593
		<b>Total</b>	<b>195</b>	<b>179</b>	<b>206</b>	<b>219</b>	<b>245</b>	<b>202</b>	<b>184</b>	<b>183</b>	<b>209</b>	<b>201</b>	<b>230</b>	<b>229</b>	<b>277</b>	<b>2,759</b>

Data in this report is preliminary and may differ from any final report. This report is produced to ensure continuous quality improvement throughout DCF.



**Table 5: Monthly Count of CPS Reports and CWS Referrals Assigned to CP&P Local Offices**

County	Local Office	Type of Referral	Jan 2016	Feb 2016	Mar 2016	Apr 2016	May 2016	Jun 2016	Jul 2016	Aug 2016	Sep 2016	Oct 2016	Nov 2016	Dec 2016	Jan 2017	Total
ESSEX	Essex Central	CPS	82	85	108	101	108	112	75	77	91	105	94	108	111	1,257
		CWS	43	37	42	38	41	23	27	27	24	39	43	40	31	455
		<b>Total</b>	<b>125</b>	<b>122</b>	<b>150</b>	<b>139</b>	<b>149</b>	<b>135</b>	<b>102</b>	<b>104</b>	<b>115</b>	<b>144</b>	<b>137</b>	<b>148</b>	<b>142</b>	<b>1,712</b>
	Essex North	CPS	53	73	75	48	59	54	58	57	59	61	77	83	68	825
		CWS	29	25	35	21	19	24	29	14	27	26	27	25	27	328
		<b>Total</b>	<b>82</b>	<b>98</b>	<b>110</b>	<b>69</b>	<b>78</b>	<b>78</b>	<b>87</b>	<b>71</b>	<b>86</b>	<b>87</b>	<b>104</b>	<b>108</b>	<b>95</b>	<b>1,153</b>
	Essex South	CPS	63	79	66	56	60	62	47	46	55	67	58	55	71	785
		CWS	27	22	26	26	24	34	19	21	25	26	25	20	24	319
		<b>Total</b>	<b>90</b>	<b>101</b>	<b>92</b>	<b>82</b>	<b>84</b>	<b>96</b>	<b>66</b>	<b>67</b>	<b>80</b>	<b>93</b>	<b>83</b>	<b>75</b>	<b>95</b>	<b>1104</b>
	Newark Center City	CPS	91	95	87	110	97	95	64	69	86	91	79	95	95	1154
		CWS	26	30	42	45	34	25	24	25	28	33	36	40	22	410
		<b>Total</b>	<b>117</b>	<b>125</b>	<b>129</b>	<b>155</b>	<b>131</b>	<b>120</b>	<b>88</b>	<b>94</b>	<b>114</b>	<b>124</b>	<b>115</b>	<b>135</b>	<b>117</b>	<b>1564</b>
	Newark Northeast	CPS	92	89	99	115	93	72	56	94	90	86	64	74	95	1119
		CWS	39	30	36	27	47	24	22	29	28	44	23	34	38	421
		<b>Total</b>	<b>131</b>	<b>119</b>	<b>135</b>	<b>142</b>	<b>140</b>	<b>96</b>	<b>78</b>	<b>123</b>	<b>118</b>	<b>130</b>	<b>87</b>	<b>108</b>	<b>133</b>	<b>1540</b>
	Newark South	CPS	107	96	104	121	87	80	80	84	79	95	94	109	102	1238
		CWS	33	40	32	35	48	39	33	30	34	40	39	26	38	467
		<b>Total</b>	<b>140</b>	<b>136</b>	<b>136</b>	<b>156</b>	<b>135</b>	<b>119</b>	<b>113</b>	<b>114</b>	<b>113</b>	<b>135</b>	<b>133</b>	<b>135</b>	<b>140</b>	<b>1705</b>
County Totals	CPS	488	517	539	551	504	475	380	427	460	505	466	524	542	6378	
	CWS	197	184	213	192	213	169	154	146	166	208	193	185	180	2400	
	<b>Total</b>	<b>685</b>	<b>701</b>	<b>752</b>	<b>743</b>	<b>717</b>	<b>644</b>	<b>534</b>	<b>573</b>	<b>626</b>	<b>713</b>	<b>659</b>	<b>709</b>	<b>722</b>	<b>8778</b>	
GLOUCESTER	Gloucester East	CPS	97	93	112	99	84	89	75	84	84	93	94	101	96	1201
		CWS	35	24	38	31	26	26	28	26	23	30	24	26	28	365
		<b>Total</b>	<b>132</b>	<b>117</b>	<b>150</b>	<b>130</b>	<b>110</b>	<b>115</b>	<b>103</b>	<b>110</b>	<b>107</b>	<b>123</b>	<b>118</b>	<b>127</b>	<b>124</b>	<b>1566</b>
	Gloucester West	CPS	91	102	106	115	87	85	90	79	110	123	84	131	106	1309
		CWS	28	33	29	22	36	34	19	34	27	20	22	24	42	370
		<b>Total</b>	<b>119</b>	<b>135</b>	<b>135</b>	<b>137</b>	<b>123</b>	<b>119</b>	<b>109</b>	<b>113</b>	<b>137</b>	<b>143</b>	<b>106</b>	<b>155</b>	<b>148</b>	<b>1679</b>
	County Totals	CPS	188	195	218	214	171	174	165	163	194	216	178	232	202	2510
		CWS	63	57	67	53	62	60	47	60	50	50	46	50	70	735
<b>Total</b>		<b>251</b>	<b>252</b>	<b>285</b>	<b>267</b>	<b>233</b>	<b>234</b>	<b>212</b>	<b>223</b>	<b>244</b>	<b>266</b>	<b>224</b>	<b>282</b>	<b>272</b>	<b>3245</b>	
HUDSON	Hudson Central	CPS	75	89	74	67	83	52	61	56	72	82	65	80	80	936
		CWS	23	28	25	31	23	34	21	10	32	33	22	36	39	357
		<b>Total</b>	<b>98</b>	<b>117</b>	<b>99</b>	<b>98</b>	<b>106</b>	<b>86</b>	<b>82</b>	<b>66</b>	<b>104</b>	<b>115</b>	<b>87</b>	<b>116</b>	<b>119</b>	<b>1293</b>
	Hudson North	CPS	95	77	96	88	101	77	62	52	81	99	79	72	85	1064
		CWS	37	35	34	27	31	30	23	18	30	29	29	30	30	383
		<b>Total</b>	<b>132</b>	<b>112</b>	<b>130</b>	<b>115</b>	<b>132</b>	<b>107</b>	<b>85</b>	<b>70</b>	<b>111</b>	<b>128</b>	<b>108</b>	<b>102</b>	<b>115</b>	<b>1447</b>
	Hudson South	CPS	60	81	60	68	86	71	52	56	71	68	81	71	86	911
		CWS	20	25	23	21	45	30	28	30	24	34	41	36	36	393
		<b>Total</b>	<b>80</b>	<b>106</b>	<b>83</b>	<b>89</b>	<b>131</b>	<b>101</b>	<b>80</b>	<b>86</b>	<b>95</b>	<b>102</b>	<b>122</b>	<b>107</b>	<b>122</b>	<b>1304</b>
	Hudson West	CPS	87	90	71	79	87	84	49	41	67	78	52	84	63	932
		CWS	27	25	29	22	25	22	8	16	26	27	20	24	30	301
		<b>Total</b>	<b>114</b>	<b>115</b>	<b>100</b>	<b>101</b>	<b>112</b>	<b>106</b>	<b>57</b>	<b>57</b>	<b>93</b>	<b>105</b>	<b>72</b>	<b>108</b>	<b>93</b>	<b>1233</b>
County Totals	CPS	317	337	301	302	357	284	224	205	291	327	277	307	314	3843	
	CWS	107	113	111	101	124	116	80	74	112	123	112	126	135	1434	
	<b>Total</b>	<b>424</b>	<b>450</b>	<b>412</b>	<b>403</b>	<b>481</b>	<b>400</b>	<b>304</b>	<b>279</b>	<b>403</b>	<b>450</b>	<b>389</b>	<b>433</b>	<b>449</b>	<b>5277</b>	
HUNTERDON	Hunterdon	CPS	35	41	33	49	29	33	28	25	33	25	28	41	32	432
		CWS	18	17	13	13	9	9	8	13	11	11	18	13	14	167
		<b>Total</b>	<b>53</b>	<b>58</b>	<b>46</b>	<b>62</b>	<b>38</b>	<b>42</b>	<b>36</b>	<b>38</b>	<b>44</b>	<b>36</b>	<b>46</b>	<b>54</b>	<b>46</b>	<b>599</b>
	County Totals	CPS	35	41	33	49	29	33	28	25	33	25	28	41	32	432
CWS		18	17	13	13	9	9	8	13	11	11	18	13	14	167	
<b>Total</b>		<b>53</b>	<b>58</b>	<b>46</b>	<b>62</b>	<b>38</b>	<b>42</b>	<b>36</b>	<b>38</b>	<b>44</b>	<b>36</b>	<b>46</b>	<b>54</b>	<b>46</b>	<b>599</b>	
MERCER	Mercer North	CPS	91	98	100	95	93	103	92	89	105	91	122	77	107	1263
		CWS	37	29	33	23	27	32	21	27	48	24	27	25	37	390
		<b>Total</b>	<b>128</b>	<b>127</b>	<b>133</b>	<b>118</b>	<b>120</b>	<b>135</b>	<b>113</b>	<b>116</b>	<b>153</b>	<b>115</b>	<b>149</b>	<b>102</b>	<b>144</b>	<b>1653</b>
	Mercer South	CPS	102	108	102	121	124	91	81	91	74	83	98	87	109	1271
		CWS	35	28	41	39	38	29	33	27	45	32	33	35	35	450
		<b>Total</b>	<b>137</b>	<b>136</b>	<b>143</b>	<b>160</b>	<b>162</b>	<b>120</b>	<b>114</b>	<b>118</b>	<b>119</b>	<b>115</b>	<b>131</b>	<b>122</b>	<b>144</b>	<b>1721</b>
County Totals	CPS	193	206	202	216	217	194	173	180	179	174	220	164	216	2534	
	CWS	72	57	74	62	65	61	54	54	93	56	60	60	72	840	
	<b>Total</b>	<b>265</b>	<b>263</b>	<b>276</b>	<b>278</b>	<b>282</b>	<b>255</b>	<b>227</b>	<b>234</b>	<b>272</b>	<b>230</b>	<b>280</b>	<b>224</b>	<b>288</b>	<b>3374</b>	

Data in this report is preliminary and may differ from any final report. This report is produced to ensure continuous quality improvement throughout DCF.



**Table 5: Monthly Count of CPS Reports and CWS Referrals Assigned to CP&P Local Offices**

County	Local Office	Type of Referral	Jan 2016	Feb 2016	Mar 2016	Apr 2016	May 2016	Jun 2016	Jul 2016	Aug 2016	Sep 2016	Oct 2016	Nov 2016	Dec 2016	Jan 2017	Total	
MIDDLESEX	Middlesex Central	CPS	70	78	77	72	97	80	57	56	103	93	73	70	91	1017	
		CWS	25	23	25	32	31	26	19	16	15	24	14	25	27	302	
		<b>Total</b>	<b>95</b>	<b>101</b>	<b>102</b>	<b>104</b>	<b>128</b>	<b>106</b>	<b>76</b>	<b>72</b>	<b>118</b>	<b>117</b>	<b>87</b>	<b>95</b>	<b>118</b>	<b>1319</b>	
	Middlesex Coastal	CPS	104	129	152	141	136	101	107	89	111	128	106	131	121	1556	
		CWS	41	46	39	39	29	35	26	36	35	40	33	39	46	484	
		<b>Total</b>	<b>145</b>	<b>175</b>	<b>191</b>	<b>180</b>	<b>165</b>	<b>136</b>	<b>133</b>	<b>125</b>	<b>146</b>	<b>168</b>	<b>139</b>	<b>170</b>	<b>167</b>	<b>2040</b>	
	Middlesex West	CPS	132	131	133	151	135	117	90	95	123	130	114	134	154	1639	
		CWS	47	32	53	57	42	28	26	39	39	34	39	42	29	507	
		<b>Total</b>	<b>179</b>	<b>163</b>	<b>186</b>	<b>208</b>	<b>177</b>	<b>145</b>	<b>116</b>	<b>134</b>	<b>162</b>	<b>164</b>	<b>153</b>	<b>176</b>	<b>183</b>	<b>2146</b>	
	County Totals	CPS	306	338	362	364	368	298	254	240	337	351	293	335	366	4212	
		CWS	113	101	117	128	102	89	71	91	89	98	86	106	102	1293	
		<b>Total</b>	<b>419</b>	<b>439</b>	<b>479</b>	<b>492</b>	<b>470</b>	<b>387</b>	<b>325</b>	<b>331</b>	<b>426</b>	<b>449</b>	<b>379</b>	<b>441</b>	<b>468</b>	<b>5505</b>	
MONMOUTH	Monmouth North	CPS	135	184	145	150	165	154	105	128	137	156	142	134	160	1895	
		CWS	35	44	38	47	40	36	29	49	43	56	42	29	49	537	
		<b>Total</b>	<b>170</b>	<b>228</b>	<b>183</b>	<b>197</b>	<b>205</b>	<b>190</b>	<b>134</b>	<b>177</b>	<b>180</b>	<b>212</b>	<b>184</b>	<b>163</b>	<b>209</b>	<b>2432</b>	
	Monmouth South	CPS	115	130	137	124	121	127	102	118	134	127	112	147	130	1624	
		CWS	43	55	41	52	40	36	36	32	33	43	36	38	52	537	
		<b>Total</b>	<b>158</b>	<b>185</b>	<b>178</b>	<b>176</b>	<b>161</b>	<b>163</b>	<b>138</b>	<b>150</b>	<b>167</b>	<b>170</b>	<b>148</b>	<b>185</b>	<b>182</b>	<b>2161</b>	
	County Totals	CPS	250	314	282	274	286	281	207	246	271	283	254	281	290	3519	
		CWS	78	99	79	99	80	72	65	81	76	99	78	67	101	1074	
		<b>Total</b>	<b>328</b>	<b>413</b>	<b>361</b>	<b>373</b>	<b>366</b>	<b>353</b>	<b>272</b>	<b>327</b>	<b>347</b>	<b>382</b>	<b>332</b>	<b>348</b>	<b>391</b>	<b>4593</b>	
	MORRIS	Morris East	CPS	73	77	81	63	74	75	48	37	73	88	79	72	72	912
			CWS	24	34	27	23	35	22	22	11	22	29	31	24	27	331
			<b>Total</b>	<b>97</b>	<b>111</b>	<b>108</b>	<b>86</b>	<b>109</b>	<b>97</b>	<b>70</b>	<b>48</b>	<b>95</b>	<b>117</b>	<b>110</b>	<b>96</b>	<b>99</b>	<b>1243</b>
Morris West		CPS	114	83	73	98	102	86	56	77	90	92	74	87	78	1110	
		CWS	27	34	36	38	36	45	20	28	40	36	30	44	41	455	
		<b>Total</b>	<b>141</b>	<b>117</b>	<b>109</b>	<b>136</b>	<b>138</b>	<b>131</b>	<b>76</b>	<b>105</b>	<b>130</b>	<b>128</b>	<b>104</b>	<b>131</b>	<b>119</b>	<b>1565</b>	
County Totals		CPS	187	160	154	161	176	161	104	114	163	180	153	159	150	2022	
		CWS	51	68	63	61	71	67	42	39	62	65	61	68	68	786	
		<b>Total</b>	<b>238</b>	<b>228</b>	<b>217</b>	<b>222</b>	<b>247</b>	<b>228</b>	<b>146</b>	<b>153</b>	<b>225</b>	<b>245</b>	<b>214</b>	<b>227</b>	<b>218</b>	<b>2808</b>	
OCEAN		Ocean North	CPS	142	146	150	157	180	152	142	142	130	165	151	154	163	1974
			CWS	63	50	43	42	46	44	29	39	43	49	41	51	47	587
			<b>Total</b>	<b>205</b>	<b>196</b>	<b>193</b>	<b>199</b>	<b>226</b>	<b>196</b>	<b>171</b>	<b>181</b>	<b>173</b>	<b>214</b>	<b>192</b>	<b>205</b>	<b>210</b>	<b>2561</b>
	Ocean South	CPS	151	137	130	127	145	120	115	117	138	138	133	131	159	1741	
		CWS	47	45	43	39	44	38	30	46	42	56	39	48	47	564	
		<b>Total</b>	<b>198</b>	<b>182</b>	<b>173</b>	<b>166</b>	<b>189</b>	<b>158</b>	<b>145</b>	<b>163</b>	<b>180</b>	<b>194</b>	<b>172</b>	<b>179</b>	<b>206</b>	<b>2305</b>	
	County Totals	CPS	293	283	280	284	325	272	257	259	268	303	284	285	322	3715	
		CWS	110	95	86	81	90	82	59	85	85	105	80	99	94	1151	
		<b>Total</b>	<b>403</b>	<b>378</b>	<b>366</b>	<b>365</b>	<b>415</b>	<b>354</b>	<b>316</b>	<b>344</b>	<b>353</b>	<b>408</b>	<b>364</b>	<b>384</b>	<b>416</b>	<b>4866</b>	
	PASSAIC	Passaic Central	CPS	144	202	169	166	175	183	122	121	152	171	176	152	184	2117
			CWS	68	89	89	66	82	55	41	42	53	71	82	68	85	891
			<b>Total</b>	<b>212</b>	<b>291</b>	<b>258</b>	<b>232</b>	<b>257</b>	<b>238</b>	<b>163</b>	<b>163</b>	<b>205</b>	<b>242</b>	<b>258</b>	<b>220</b>	<b>269</b>	<b>3008</b>
Passaic North		CPS	152	159	170	162	151	120	96	121	129	150	129	146	178	1863	
		CWS	57	54	82	61	48	43	40	47	63	79	52	65	71	762	
		<b>Total</b>	<b>209</b>	<b>213</b>	<b>252</b>	<b>223</b>	<b>199</b>	<b>163</b>	<b>136</b>	<b>168</b>	<b>192</b>	<b>229</b>	<b>181</b>	<b>211</b>	<b>249</b>	<b>2625</b>	
County Totals		CPS	296	361	339	328	326	303	218	242	281	321	305	298	362	3980	
		CWS	125	143	171	127	130	98	81	89	116	150	134	133	156	1653	
		<b>Total</b>	<b>421</b>	<b>504</b>	<b>510</b>	<b>455</b>	<b>456</b>	<b>401</b>	<b>299</b>	<b>331</b>	<b>397</b>	<b>471</b>	<b>439</b>	<b>431</b>	<b>518</b>	<b>5633</b>	
SALEM		Salem	CPS	72	43	78	61	64	57	52	48	63	59	51	45	80	773
			CWS	22	24	16	28	18	23	11	19	26	19	15	15	13	249
			<b>Total</b>	<b>94</b>	<b>67</b>	<b>94</b>	<b>89</b>	<b>82</b>	<b>80</b>	<b>63</b>	<b>67</b>	<b>89</b>	<b>78</b>	<b>66</b>	<b>60</b>	<b>93</b>	<b>1022</b>
	County Totals	CPS	72	43	78	61	64	57	52	48	63	59	51	45	80	773	
		CWS	22	24	16	28	18	23	11	19	26	19	15	15	13	249	
		<b>Total</b>	<b>94</b>	<b>67</b>	<b>94</b>	<b>89</b>	<b>82</b>	<b>80</b>	<b>63</b>	<b>67</b>	<b>89</b>	<b>78</b>	<b>66</b>	<b>60</b>	<b>93</b>	<b>1022</b>	
SOMERSET	Somerset	CPS	104	120	124	115	136	129	107	88	115	119	136	122	111	1526	
		CWS	37	40	41	37	33	31	32	24	34	39	48	42	36	474	
		<b>Total</b>	<b>141</b>	<b>160</b>	<b>165</b>	<b>152</b>	<b>169</b>	<b>160</b>	<b>139</b>	<b>112</b>	<b>149</b>	<b>158</b>	<b>184</b>	<b>164</b>	<b>147</b>	<b>2000</b>	
	County Totals	CPS	104	120	124	115	136	129	107	88	115	119	136	122	111	1526	
		CWS	37	40	41	37	33	31	32	24	34	39	48	42	36	474	
		<b>Total</b>	<b>141</b>	<b>160</b>	<b>165</b>	<b>152</b>	<b>169</b>	<b>160</b>	<b>139</b>	<b>112</b>	<b>149</b>	<b>158</b>	<b>184</b>	<b>164</b>	<b>147</b>	<b>2000</b>	

Data in this report is preliminary and may differ from any final report. This report is produced to ensure continuous quality improvement throughout DCF.



**Table 5: Monthly Count of CPS Reports and CWS Referrals Assigned to CP&P Local Offices**

County	Local Office	Type of Referral	Jan 2016	Feb 2016	Mar 2016	Apr 2016	May 2016	Jun 2016	Jul 2016	Aug 2016	Sep 2016	Oct 2016	Nov 2016	Dec 2016	Jan 2017	Total
			2016	2016	2016	2016	2016	2016	2016	2016	2016	2016	2016	2016		
SUSSEX	Sussex	CPS	82	83	76	77	71	68	74	69	79	55	70	71	71	946
		CWS	13	30	29	17	17	23	16	18	22	25	26	33	30	299
		<b>Total</b>	<b>95</b>	<b>113</b>	<b>105</b>	<b>94</b>	<b>88</b>	<b>91</b>	<b>90</b>	<b>87</b>	<b>101</b>	<b>80</b>	<b>96</b>	<b>104</b>	<b>101</b>	<b>1245</b>
	County Totals	CPS	82	83	76	77	71	68	74	69	79	55	70	71	71	946
		CWS	13	30	29	17	17	23	16	18	22	25	26	33	30	299
		<b>Total</b>	<b>95</b>	<b>113</b>	<b>105</b>	<b>94</b>	<b>88</b>	<b>91</b>	<b>90</b>	<b>87</b>	<b>101</b>	<b>80</b>	<b>96</b>	<b>104</b>	<b>101</b>	<b>1245</b>
UNION	Union Central	CPS	74	85	78	89	105	67	60	55	78	84	82	83	86	1026
		CWS	32	29	30	24	23	29	24	27	26	22	28	25	38	357
		<b>Total</b>	<b>106</b>	<b>114</b>	<b>108</b>	<b>113</b>	<b>128</b>	<b>96</b>	<b>84</b>	<b>82</b>	<b>104</b>	<b>106</b>	<b>110</b>	<b>108</b>	<b>124</b>	<b>1383</b>
	Union East	CPS	75	78	99	99	100	79	67	66	74	77	78	73	98	1063
		CWS	25	30	25	28	25	28	26	23	28	35	33	31	29	366
		<b>Total</b>	<b>100</b>	<b>108</b>	<b>124</b>	<b>127</b>	<b>125</b>	<b>107</b>	<b>93</b>	<b>89</b>	<b>102</b>	<b>112</b>	<b>111</b>	<b>104</b>	<b>127</b>	<b>1429</b>
	Union West	CPS	65	79	84	73	87	60	57	49	90	78	65	62	68	917
		CWS	28	30	34	23	33	32	21	24	27	20	26	32	22	352
		<b>Total</b>	<b>93</b>	<b>109</b>	<b>118</b>	<b>96</b>	<b>120</b>	<b>92</b>	<b>78</b>	<b>73</b>	<b>117</b>	<b>98</b>	<b>91</b>	<b>94</b>	<b>90</b>	<b>1269</b>
	County Totals	CPS	214	242	261	261	292	206	184	170	242	239	225	218	252	3006
		CWS	85	89	89	75	81	89	71	74	81	77	87	88	89	1075
		<b>Total</b>	<b>299</b>	<b>331</b>	<b>350</b>	<b>336</b>	<b>373</b>	<b>295</b>	<b>255</b>	<b>244</b>	<b>323</b>	<b>316</b>	<b>312</b>	<b>306</b>	<b>341</b>	<b>4081</b>
WARREN	Warren	CPS	72	64	60	68	74	67	49	68	76	79	68	57	88	890
		CWS	21	23	17	31	32	21	13	10	21	18	16	22	20	265
		<b>Total</b>	<b>93</b>	<b>87</b>	<b>77</b>	<b>99</b>	<b>106</b>	<b>88</b>	<b>62</b>	<b>78</b>	<b>97</b>	<b>97</b>	<b>84</b>	<b>79</b>	<b>108</b>	<b>1155</b>
	County Totals	CPS	72	64	60	68	74	67	49	68	76	79	68	57	88	890
		CWS	21	23	17	31	32	21	13	10	21	18	16	22	20	265
		<b>Total</b>	<b>93</b>	<b>87</b>	<b>77</b>	<b>99</b>	<b>106</b>	<b>88</b>	<b>62</b>	<b>78</b>	<b>97</b>	<b>97</b>	<b>84</b>	<b>79</b>	<b>108</b>	<b>1155</b>
<b>County CPS Referral Total</b>	<b>CPS</b>	<b>4,378</b>	<b>4,657</b>	<b>4,632</b>	<b>4,714</b>	<b>4,882</b>	<b>4,237</b>	<b>3,453</b>	<b>3,653</b>	<b>4,328</b>	<b>4,571</b>	<b>4,328</b>	<b>4,448</b>	<b>4,794</b>	<b>57,075</b>	
<b>County CWS Referral Total</b>	<b>CWS</b>	<b>1,526</b>	<b>1,573</b>	<b>1,618</b>	<b>1,494</b>	<b>1,573</b>	<b>1,411</b>	<b>1,146</b>	<b>1,254</b>	<b>1,485</b>	<b>1,572</b>	<b>1,494</b>	<b>1,529</b>	<b>1,665</b>	<b>19,340</b>	
<b>County Referral Total</b>	<b>Total</b>	<b>5,904</b>	<b>6,230</b>	<b>6,250</b>	<b>6,208</b>	<b>6,455</b>	<b>5,648</b>	<b>4,599</b>	<b>4,907</b>	<b>5,813</b>	<b>6,143</b>	<b>5,822</b>	<b>5,977</b>	<b>6,459</b>	<b>76,415</b>	
Central Region IAIU	CPS	44	53	46	59	55	53	33	54	52	63	57	59	41	669	
	CWS	0	0	0	0	0	0	0	0	0	0	0	0	0	0	
	<b>Total</b>	<b>44</b>	<b>53</b>	<b>46</b>	<b>59</b>	<b>55</b>	<b>53</b>	<b>33</b>	<b>54</b>	<b>52</b>	<b>63</b>	<b>57</b>	<b>59</b>	<b>41</b>	<b>669</b>	
Metro Region IAIU	CPS	43	60	64	60	68	61	36	32	46	65	48	45	61	689	
	CWS	0	0	0	0	0	0	0	0	0	0	0	0	0	0	
	<b>Total</b>	<b>43</b>	<b>60</b>	<b>64</b>	<b>60</b>	<b>68</b>	<b>61</b>	<b>36</b>	<b>32</b>	<b>46</b>	<b>65</b>	<b>48</b>	<b>45</b>	<b>61</b>	<b>689</b>	
Northern Region IAIU	CPS	58	58	66	71	70	66	27	45	62	76	70	52	65	786	
	CWS	0	0	0	0	0	0	0	0	0	0	0	0	0	0	
	<b>Total</b>	<b>58</b>	<b>58</b>	<b>66</b>	<b>71</b>	<b>70</b>	<b>66</b>	<b>27</b>	<b>45</b>	<b>62</b>	<b>76</b>	<b>70</b>	<b>52</b>	<b>65</b>	<b>786</b>	
Southern Region IAIU	CPS	79	64	76	90	73	92	44	72	66	68	88	79	76	967	
	CWS	0	0	0	0	0	0	0	0	0	0	1	0	0	1	
	<b>Total</b>	<b>79</b>	<b>64</b>	<b>76</b>	<b>90</b>	<b>73</b>	<b>92</b>	<b>44</b>	<b>72</b>	<b>66</b>	<b>68</b>	<b>89</b>	<b>79</b>	<b>76</b>	<b>968</b>	
<b>IAIU CPS Subtotal</b>	<b>CPS</b>	<b>224</b>	<b>235</b>	<b>252</b>	<b>280</b>	<b>266</b>	<b>272</b>	<b>140</b>	<b>203</b>	<b>226</b>	<b>272</b>	<b>263</b>	<b>235</b>	<b>243</b>	<b>3,111</b>	
<b>IAIU CWS Subtotal</b>	<b>CWS</b>	<b>0</b>	<b>0</b>	<b>0</b>	<b>0</b>	<b>0</b>	<b>0</b>	<b>0</b>	<b>0</b>	<b>0</b>	<b>0</b>	<b>1</b>	<b>0</b>	<b>0</b>	<b>1</b>	
<b>IAIU Subtotal</b>	<b>Total</b>	<b>224</b>	<b>235</b>	<b>252</b>	<b>280</b>	<b>266</b>	<b>272</b>	<b>140</b>	<b>203</b>	<b>226</b>	<b>272</b>	<b>264</b>	<b>235</b>	<b>243</b>	<b>3,112</b>	
<b>County and IAIU CPS Subtotal</b>	<b>CPS</b>	<b>4,602</b>	<b>4,892</b>	<b>4,884</b>	<b>4,994</b>	<b>5,148</b>	<b>4,509</b>	<b>3,593</b>	<b>3,856</b>	<b>4,554</b>	<b>4,843</b>	<b>4,591</b>	<b>4,683</b>	<b>5,037</b>	<b>60,186</b>	
<b>County and IAIU CWS Subtotal</b>	<b>CWS</b>	<b>1,526</b>	<b>1,573</b>	<b>1,618</b>	<b>1,494</b>	<b>1,573</b>	<b>1,411</b>	<b>1,146</b>	<b>1,254</b>	<b>1,485</b>	<b>1,572</b>	<b>1,495</b>	<b>1,529</b>	<b>1,665</b>	<b>19,341</b>	
<b>Unable to Determine<sup>(1)</sup></b>	<b>Total</b>	<b>128</b>	<b>126</b>	<b>165</b>	<b>115</b>	<b>149</b>	<b>140</b>	<b>110</b>	<b>137</b>	<b>168</b>	<b>140</b>	<b>143</b>	<b>129</b>	<b>113</b>	<b>1,763</b>	
<b>Other Offices</b>	<b>Total</b>	<b>1</b>	<b>5</b>	<b>2</b>	<b>4</b>	<b>1</b>	<b>3</b>	<b>1</b>	<b>1</b>	<b>6</b>	<b>2</b>	<b>0</b>	<b>1</b>	<b>4</b>	<b>31</b>	
<b>Grand Total</b>	<b>Total</b>	<b>6,257</b>	<b>6,596</b>	<b>6,669</b>	<b>6,607</b>	<b>6,871</b>	<b>6,063</b>	<b>4,850</b>	<b>5,248</b>	<b>6,213</b>	<b>6,557</b>	<b>6,229</b>	<b>6,342</b>	<b>6,819</b>	<b>81,321</b>	

<sup>(1)</sup>CPS Reports or CWS Referrals not assigned to an office through the Assignment Designee, but were assigned to an office for an assessment or investigation.