



Child Protection and Permanency

Monthly Screening and Investigation Report January 2018

Allison Blake, Ph.D., L.S.W.
Commissioner

February 8, 2018



Table of Contents

Table 1: NJ State Central Registry Activity: Monthly Child Abuse and Neglect Hotline Calls, Intakes and Assignments to Child Protection & Permanency (CP&P) Offices

Chart 1: CP&P Annual Trends in Child Protection Services (CPS) Reports and Child Welfare Services (CWS) Referrals

Table 2: Assignments to CP&P Offices: CPS Reports and CWS Referrals

Table 3: Source of CPS Reports and CWS Referrals

Table 4: Monthly Count of CPS Reports and CWS Referrals Assigned to Counties

Table 5: Monthly Count of CPS Reports and CWS Referrals Assigned to CP&P Local Offices

Table 1: NJ State Central Registry Activity: Monthly Child Abuse and Neglect Hotline Calls, Intakes and Assignments to CP&P Offices^{1,2,7}

2017 - 2018	Hotline Call Activity				Intakes Recorded in NJ SPIRIT ^{6,8}												Assignments to CP&P Offices				
	Total Calls to SCR ³	Abandon Calls ⁴	Average Time to Answer (seconds)	Resulting NJS Intakes ⁵	CPS Reports		CWS Referrals		No Action Required (NAR)		Related Information (RI)		Information & Referral (I&R)		Information Only (IO)		CPS Reports		CWS Referrals		Total
					n	%	n	%	n	%	n	%	n	%	n	%	n	%	n	%	
January 2017	14,182	603	45	15,375	5,111	33.2%	1,708	11.1%	321	2.1%	4,221	27.5%	1,670	10.9%	2,344	15.2%	5,111	75.0%	1,708	25.0%	6,819
February 2017	13,261	524	39	14,478	4,716	32.6%	1,503	10.4%	258	1.8%	3,882	26.8%	1,645	11.4%	2,474	17.1%	4,716	75.8%	1,504	24.2%	6,220
March 2017	14,751	538	33	16,228	5,349	33.0%	1,844	11.4%	426	2.6%	4,173	25.7%	1,892	11.7%	2,544	15.7%	5,349	74.4%	1,843	25.6%	7,192
April 2017	13,397	575	36	14,760	4,790	32.5%	1,489	10.1%	420	2.8%	4,037	27.4%	1,607	10.9%	2,417	16.4%	4,790	76.3%	1,490	23.7%	6,280
May 2017	13,397	575	36	17,359	5,847	33.7%	1,919	11.1%	378	2.2%	4,509	26.0%	2,028	11.7%	2,678	15.4%	5,847	75.3%	1,919	24.7%	7,766
June 2017	13,832	617	41	15,143	4,853	32.0%	1,664	11.0%	476	3.1%	4,063	26.8%	1,642	10.8%	2,445	16.1%	4,853	74.5%	1,665	25.5%	6,518
July 2017	12,245	710	57	13,369	3,814	28.5%	1,389	10.4%	336	2.5%	3,877	29.0%	1,436	10.7%	2,517	18.8%	3,814	73.3%	1,389	26.7%	5,203
August 2017	11,672	445	38	12,927	3,866	29.9%	1,338	10.4%	393	3.0%	3,447	26.7%	1,535	11.9%	2,348	18.2%	3,866	74.3%	1,340	25.7%	5,206
September 2017	13,450	570	40	14,750	4,719	32.0%	1,642	11.1%	381	2.6%	3,951	26.8%	1,700	11.5%	2,357	16.0%	4,719	74.2%	1,643	25.8%	6,362
October 2017	15,474	657	45	16,828	5,613	33.4%	1,968	11.7%	305	1.8%	4,353	25.9%	1,883	11.2%	2,706	16.1%	5,613	74.1%	1,966	25.9%	7,579
November 2017	14,446	672	43	15,694	5,223	33.3%	1,750	11.2%	235	1.5%	4,246	27.1%	1,680	10.7%	2,560	16.3%	5,223	74.9%	1,753	25.1%	6,976
December 2017	13,005	560	38	14,194	4,601	32.4%	1,594	11.2%	220	1.5%	3,843	27.1%	1,724	12.1%	2,212	15.6%	4,601	74.3%	1,594	25.7%	6,195
January 2018	14,876	952	60	15,833	5,276	33.3%	1,784	11.3%	242	1.5%	4,346	27.4%	1,755	11.1%	2,430	15.3%	5,276	74.7%	1,784	25.3%	7,060
	13,691	615	42	15,149	4,906	32.4%	1,661	11.0%	338	2.2%	4,073	26.9%	1,707	11.3%	2,464	16.3%	4,906	74.7%	1,661	25.3%	6,567
Overall Total	177,988	7,998		196,938	63,778		21,592		4,391		52,948		22,197		32,032		63,778	74.7%	21,598	25.3%	85,376

¹Comes from three distinct sources: (1) the Automatic Call Distribution (ACD) phone system; which keeps a count of the number of calls and call routing; (2) Monthly NJSpirit Intakes; which record decision making on calls received by hotline screeners, and (3) NJSpirit extracts of assigned CWS Referrals and CPS Reports.

²The number of Intakes, CPS Reports, and CWS Referrals are based on an extract from NJSpirit. Data extracted by the Office of Research, Evaluation, and Reporting on **February 8, 2018** includes all Intakes, CPS Reports, and CWS Referrals received from **January 1, 2018 through January 31, 2018**.

³The number calls received through the ACD System that were directed to a screener from any call-in phone number.

⁴The number of calls received through the ACD System that are abandoned either while waiting in queue or while ringing.

⁵The number of Intakes entered in NJSpirit from the number of calls received.

⁶The number of Intakes recorded in NJSpirit, by type of Intake. There is not a one-to-one relationship between an ACD call and an Intake; multiple calls to State Central Registry (SCR) may result in a single Intake, or one call may result in multiple Intakes.

⁷Intake: The process of documenting: a report of alleged abuse or neglect of a child (CPS); a request for services on behalf of a child, or a referral of a child for services (CWS); a call in which the caller provides additional or clarifying information about a current service case or active investigation (RI); informing a caller of, or referring a caller to, services available from other private or public sources (I&R); a call that requires no action by CP&P (NAR); or a response to a simple inquiry (IO).

⁸NJ SPIRIT: NJ Statewide Protection Investigation and Reporting Information Tool case management system

CP&P Annual Trends in CPS Reports and CWS Referrals

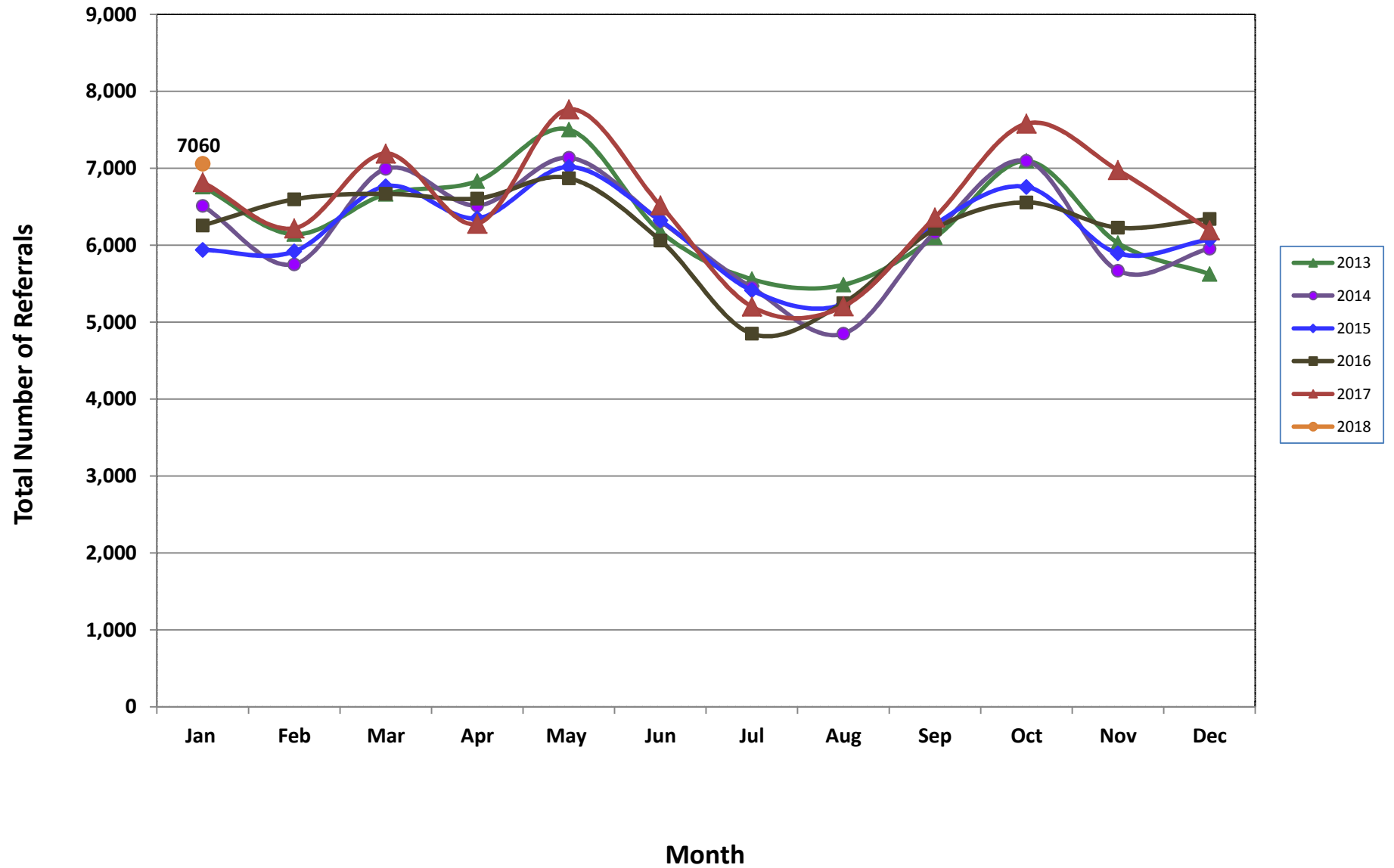


Table 2: Assignments to CP&P Offices: CPS Reports and CWS Referrals¹

Intake Date ³		CPS Reports ²	CWS Referrals ²	Total Assignments ²
2013	Jan 2013	5,464	1,296	6,760
	Feb 2013	4,966	1,177	6,143
	Mar 2013	5,355	1,309	6,664
	Apr 2013	5,430	1,402	6,832
	May 2013	5,993	1,510	7,503
	Jun 2013	4,947	1,230	6,177
	Jul 2013	4,330	1,228	5,558
	Aug 2013	4,330	1,155	5,485
	Sep 2013	4,851	1,251	6,102
	Oct 2013	5,614	1,481	7,095
	Nov 2013	4,694	1,334	6,028
	Dec 2013	4,397	1,229	5,626
	Total	60,371	15,602	75,973
2014	Jan 2014	5,097	1,416	6,513
	Feb 2014	4,457	1,295	5,752
	Mar 2014	5,408	1,586	6,994
	Apr 2014	5,049	1,467	6,516
	May 2014	5,501	1,635	7,136
	Jun 2014	4,796	1,517	6,313
	Jul 2014	4,202	1,247	5,449
	Aug 2014	3,629	1,222	4,851
	Sep 2014	4,668	1,498	6,166
	Oct 2014	5,509	1,586	7,095
	Nov 2014	4,254	1,416	5,670
	Dec 2014	4,509	1,447	5,956
	Total	57,079	17,332	74,411
2015	Jan 2015	4,549	1,391	5,940
	Feb 2015	4,574	1,345	5,919
	Mar 2015	5,187	1,580	6,767
	Apr 2015	4,967	1,384	6,351
	May 2015	5,457	1,561	7,018
	Jun 2015	4,887	1,436	6,323
	Jul 2015	4,140	1,273	5,413
	Aug 2015	3,978	1,256	5,234
	Sep 2015	4,776	1,495	6,271
	Oct 2015	5,139	1,619	6,758
	Nov 2015	4,417	1,477	5,894
	Dec 2015	4,530	1,544	6,074
	Total	56,601	17,361	73,962

Table 2: Assignments to CP&P Offices: CPS Reports and CWS Referrals¹

Intake Date ³		CPS Reports ²	CWS Referrals ²	Total Assignments ²
2016	Jan 2016	4,686	1,571	6,257
	Feb 2016	4,974	1,622	6,596
	Mar 2016	5,000	1,669	6,669
	Apr 2016	5,065	1,542	6,607
	May 2016	5,238	1,633	6,871
	Jun 2016	4,602	1,461	6,063
	Jul 2016	3,663	1,187	4,850
	Aug 2016	3,941	1,307	5,248
	Sep 2016	4,654	1,559	6,213
	Oct 2016	4,935	1,622	6,557
	Nov 2016	4,677	1,552	6,229
	Dec 2016	4,762	1,580	6,342
	Total	56,197	18,305	74,502
2017	Jan 2017	5,111	1,708	6,819
	Feb 2017	4,716	1,504	6,220
	Mar 2017	5,349	1,843	7,192
	Apr 2017	4,790	1,490	6,280
	May 2017	5,847	1,919	7,766
	Jun 2017	4,853	1,665	6,518
	Jul 2017	3,814	1,389	5,203
	Aug 2017	3,866	1,340	5,206
	Sep 2017	4,719	1,643	6,362
	Oct 2017	5,613	1,966	7,579
	Nov 2017	5,223	1,753	6,976
	Dec 2017	4,601	1,594	6,195
	Total	58,502	19,814	72,121
2018	Jan 2018	5,276	1,784	7,060
	Total	5,276	1,784	7,060
Grand Total		294,026	90,198	378,029

¹Source of Data: NJ SPIRIT

²A CPS Report or a CWS Referral may include multiple children in a family, with one or more allegation or request for services. In these cases, each CPS Report or CWS Referral is counted once - the CPS Report or the CWS Referral is the unit of analysis rather than the child.

³Prior to January 2014, the number of CPS Reports and CWS Referrals was based on the type of assignment of the CPS Report or CWS Referral. Beginning in January 2014, the number of CPS Reports and CWS Referrals is based on the number of CPS Reports and CWS Referrals received.

Table 3: Source of CPS Reports and CWS Referrals

	Source	Jan 2017	Feb 2017	Mar 2017	Apr 2017	May 2017	Jun 2017	Jul 2017	Aug 2017	Sep 2017	Oct 2017	Nov 2017	Dec 2017	Jan 2018		13 Month Total	
CPS Reports and CWS Referrals	School Staff	1,952	1,723	2,116	1,400	2,167	1,149	150	90	1211	2030	1851	1622	1932	27%	19,393	23%
	Healthcare Provider	873	837	867	824	924	932	818	873	861	968	953	848	1003	14%	11,581	14%
	Law Enforcement	992	881	1,022	1,133	1,177	1,072	1,148	1169	1180	1236	1130	988	1018	14%	14,146	17%
	Government Agency	453	432	491	376	434	438	400	423	442	475	399	408	392	6%	5,563	7%
	Parent	544	476	554	517	632	586	571	535	528	567	571	487	569	8%	7,137	8%
	Relative/Friend/Neighbor	444	379	434	462	536	525	541	494	462	513	493	396	531	8%	6,210	7%
	Anonymous	654	645	715	633	837	754	580	627	711	753	641	595	602	9%	8,747	10%
	CP&P	122	105	136	110	128	144	145	142	142	150	107	129	125	2%	1,685	2%
	Court/Legal	126	152	162	132	141	183	131	161	162	148	116	135	130	2%	1,879	2%
	Community Group/Individual	280	229	278	296	336	283	288	307	279	320	299	265	318	5%	3,778	4%
	Facility Staff (incl Correctional Facility)	98	76	81	99	95	102	90	92	89	97	75	46	85	1%	1,125	1%
	Child (Self)	34	34	34	22	38	38	35	41	46	32	41	25	49	1%	469	1%
	Other	232	240	280	259	300	296	283	235	236	272	273	237	294	4%	3,437	4%
	Daycare/Babysitter	15	11	22	17	21	16	23	17	13	18	27	14	12	0%	226	0%
	Total	6,819	6,220	7,192	6,280	7,766	6,518	5,203	5,206	6,362	7,579	6,976	6,195	7,060		85,376	

Table 4: Monthly Count of CPS Reports and CWS Referrals Assigned to Counties

County														Average Number of Assignments Last 13 Months	Dec 17 to Jan 18 Numerical Difference
	Jan 2017	Feb 2017	Mar 2017	Apr 2017	May 2017	Jun 2017	Jul 2017	Aug 2017	Sep 2017	Oct 2017	Nov 2017	Dec 2017	Jan 2018		
Atlantic	241	221	271	233	312	253	214	245	255	293	253	221	291	254	70
Bergen	423	375	409	370	425	351	284	291	362	428	418	416	394	380	-22
Burlington	333	289	343	262	394	283	262	256	328	371	343	294	315	313	21
Camden	539	520	643	581	629	571	447	492	530	675	576	535	634	567	99
Cape May	68	81	85	79	118	76	80	64	68	86	84	77	82	81	5
Cumberland	277	213	248	243	260	236	203	207	249	252	213	193	250	234	57
Essex	722	627	781	701	878	770	561	585	642	804	721	665	787	711	122
Gloucester	272	291	303	251	274	280	221	235	232	282	267	252	268	264	16
Hudson	449	413	453	379	519	434	295	290	418	452	454	418	439	416	21
Hunterdon	46	49	57	39	59	37	49	40	64	64	50	60	60	52	0
Mercer	288	236	277	251	327	272	210	222	308	282	298	232	264	267	32
Middlesex	468	476	514	431	530	404	350	257	420	533	525	419	540	451	121
Monmouth	391	374	399	349	435	357	276	264	349	442	381	327	413	366	86
Morris	218	219	244	239	260	239	163	168	216	290	250	219	269	230	50
Ocean	416	378	420	390	473	377	339	351	342	422	418	356	411	392	55
Passaic	518	413	522	412	550	424	324	319	425	576	513	421	451	451	30
Salem	93	73	78	87	90	85	74	54	102	83	100	80	90	84	10
Somerset	147	146	178	153	180	151	111	117	127	166	169	172	156	152	-16
Sussex	101	84	106	74	102	93	72	92	92	106	111	92	126	96	34
Union	341	303	361	317	375	335	255	246	345	353	343	324	361	328	37
Warren	108	96	95	84	85	99	109	69	117	131	102	72	94	97	22
County Subtotals	6,459	5,877	6,787	5,925	7,275	6,127	4,899	4,864	5,991	7,091	6,589	5,845	6,695	6,186	850
Central Region IAIU	41	58	54	50	75	67	42	55	54	68	73	55	62	58	7
Metro Region IAIU	61	54	68	51	69	48	34	25	41	58	48	56	54	51	-2
Northern Region IAIU	65	58	68	48	87	49	47	34	51	70	58	54	60	58	6
Southern Region IAIU	76	71	87	76	108	80	50	63	66	102	77	84	90	79	6
IAIU Subtotals	243	241	277	225	339	244	173	177	212	298	256	249	266	246	17
Unable to Determine¹	113	100	126	127	152	146	129	163	158	187	129	98	94	132	-4
Other Offices	4	2	2	3	0	1	2	2	1	3	2	3	5	2	2
Grand Total	6,819	6,220	7,192	6,280	7,766	6,518	5,203	5,206	6,362	7,579	6,976	6,195	7,060	6,567	865

¹CPS Reports or CWS Referrals not assigned to an office through the Assignment Designee, but were assigned to an office for an assessment or investigation.

Table 5: Monthly Count of CPS Reports and CWS Referrals Assigned to CP&P Local Offices

County	Local Office	Type of Referral	Jan 2017	Feb 2017	Mar 2017	Apr 2017	May 2017	Jun 2017	Jul 2017	Aug 2017	Sep 2017	Oct 2017	Nov 2017	Dec 2017	Jan 2018	Total
ATLANTIC	Atlantic East	CPS	107	102	118	101	141	107	108	102	107	138	99	94	127	1,451
		CWS	27	21	35	34	45	41	32	41	35	47	51	33	36	478
		Total	134	123	153	135	186	148	140	143	142	185	150	127	163	1,929
	Atlantic West	CPS	73	69	86	74	102	76	60	81	90	74	79	75	94	1,033
		CWS	34	29	32	24	24	29	14	21	23	34	24	19	34	341
		Total	107	98	118	98	126	105	74	102	113	108	103	94	128	1,374
	County Totals	CPS	180	171	204	175	243	183	168	183	197	212	178	169	221	2,484
		CWS	61	50	67	58	69	70	46	62	58	81	75	52	70	819
		Total	241	221	271	233	312	253	214	245	255	293	253	221	291	3,303
BERGEN	Bergen Central	CPS	127	118	121	104	129	109	72	70	106	142	140	128	138	1,504
		CWS	52	42	45	42	51	31	34	33	47	45	47	48	40	557
		Total	179	160	166	146	180	140	106	103	153	187	187	176	178	2,061
	Bergen South	CPS	174	152	165	175	166	151	117	138	149	182	167	177	154	2,067
		CWS	70	63	78	49	79	60	61	50	60	59	64	63	62	818
		Total	244	215	243	224	245	211	178	188	209	241	231	240	216	2,885
	County Totals	CPS	301	270	286	279	295	260	189	208	255	324	307	305	292	3,571
		CWS	122	105	123	91	130	91	95	83	107	104	111	111	102	1,375
		Total	423	375	409	370	425	351	284	291	362	428	418	416	394	4,946
BURLINGTON	Burlington East	CPS	118	98	118	82	155	107	116	97	125	146	137	101	129	1,529
		CWS	45	40	55	34	61	35	32	30	39	52	43	38	39	543
		Total	163	138	173	116	216	142	148	127	164	198	180	139	168	2,072
	Burlington West	CPS	125	111	125	109	130	108	81	96	116	126	117	99	108	1,451
		CWS	45	40	45	37	48	33	33	33	48	47	46	56	39	550
		Total	170	151	170	146	178	141	114	129	164	173	163	155	147	2,001
	County Totals	CPS	243	209	243	191	285	215	197	193	241	272	254	200	237	2,980
		CWS	90	80	100	71	109	68	65	63	87	99	89	94	78	1,093
		Total	333	289	343	262	394	283	262	256	328	371	343	294	315	4,073
CAMDEN	Camden Central	CPS	106	113	158	119	125	136	99	117	106	148	129	122	157	1,635
		CWS	38	34	40	28	31	38	29	36	27	40	41	51	31	464
		Total	144	147	198	147	156	174	128	153	133	188	170	173	188	2,099
	Camden East	CPS	126	88	104	125	111	103	75	94	104	123	118	100	116	1,387
		CWS	43	30	33	32	46	32	34	28	30	49	46	27	39	469
		Total	169	118	137	157	157	135	109	122	134	172	164	127	155	1,856
	Camden North	CPS	102	107	131	120	155	114	88	87	112	113	109	82	118	1,438
		CWS	32	32	46	30	28	43	37	29	41	47	31	35	50	481
		Total	134	139	177	150	183	157	125	116	153	160	140	117	168	1,919
	Camden South	CPS	73	89	96	99	103	88	71	78	88	108	74	85	89	1,141
		CWS	19	27	35	28	30	17	14	23	22	47	28	33	34	357
		Total	92	116	131	127	133	105	85	101	110	155	102	118	123	1,498
County Totals	CPS	407	397	489	463	494	441	333	376	410	492	430	389	480	5,601	
	CWS	132	123	154	118	135	130	114	116	120	183	146	146	154	1,771	
	Total	539	520	643	581	629	571	447	492	530	675	576	535	634	7,372	
CAPE MAY	Cape May	CPS	52	65	68	50	100	67	64	45	58	66	61	58	64	818
		CWS	16	16	17	29	18	9	16	19	10	20	23	19	18	230
		Total	68	81	85	79	118	76	80	64	68	86	84	77	82	1,048
	County Totals	CPS	52	65	68	50	100	67	64	45	58	66	61	58	64	818
		CWS	16	16	17	29	18	9	16	19	10	20	23	19	18	230
		Total	68	81	85	79	118	76	80	64	68	86	84	77	82	1,048
CUMBERLAND	Cumberland East	CPS	70	59	60	65	70	48	50	54	72	68	48	44	62	770
		CWS	26	26	20	22	21	20	33	23	19	27	13	22	16	288
		Total	96	85	80	87	91	68	83	77	91	95	61	66	78	1,058
	Cumberland West	CPS	143	93	118	123	135	123	84	103	118	117	113	101	146	1,517
		CWS	38	35	50	33	34	45	36	27	40	40	39	26	26	469
		Total	181	128	168	156	169	168	120	130	158	157	152	127	172	1,986
	County Totals	CPS	213	152	178	188	205	171	134	157	190	185	161	145	208	2,287
		CWS	64	61	70	55	55	65	69	50	59	67	52	48	42	757
		Total	277	213	248	243	260	236	203	207	249	252	213	193	250	3,044

Table 5: Monthly Count of CPS Reports and CWS Referrals Assigned to CP&P Local Offices

County	Local Office	Type of Referral	Jan 2017	Feb 2017	Mar 2017	Apr 2017	May 2017	Jun 2017	Jul 2017	Aug 2017	Sep 2017	Oct 2017	Nov 2017	Dec 2017	Jan 2018	Total
ESSEX	Essex Central	CPS	111	81	77	78	118	92	82	78	79	121	108	79	93	1,197
		CWS	31	33	41	32	49	42	33	23	33	40	33	28	42	460
		Total	142	114	118	110	167	134	115	101	112	161	141	107	135	1,657
	Essex North	CPS	68	49	79	62	87	84	50	58	70	68	67	64	80	886
		CWS	27	24	26	35	31	32	25	18	23	35	31	25	25	357
		Total	95	73	105	97	118	116	75	76	93	103	98	89	105	1,243
	Essex South	CPS	71	69	69	65	76	62	45	53	58	69	68	72	83	860
		CWS	24	16	31	22	32	21	12	23	19	34	20	28	18	300
		Total	95	85	100	87	108	83	57	76	77	103	88	100	101	1160
	Newark Center City	CPS	95	81	103	102	121	114	71	75	89	110	98	104	107	1270
		CWS	22	25	40	31	38	47	31	37	30	29	34	18	34	416
		Total	117	106	143	133	159	161	102	112	119	139	132	122	141	1686
	Newark Northeast	CPS	95	89	104	104	108	103	83	90	94	99	106	76	107	1258
		CWS	38	25	46	39	39	32	25	18	29	44	34	30	44	443
		Total	133	114	150	143	147	135	108	108	123	143	140	106	151	1701
Newark South	CPS	102	101	120	95	128	99	78	75	80	116	93	103	116	1306	
	CWS	38	34	45	36	51	42	26	37	38	39	29	38	38	491	
	Total	140	135	165	131	179	141	104	112	118	155	122	141	154	1797	
County Totals	CPS	542	470	552	506	638	554	409	429	470	583	540	498	586	6777	
	CWS	180	157	229	195	240	216	152	156	172	221	181	167	201	2467	
	Total	722	627	781	701	878	770	561	585	642	804	721	665	787	9244	
GLOUCESTER	Gloucester East	CPS	96	112	109	85	104	106	74	91	79	102	89	96	94	1237
		CWS	28	28	29	27	35	31	27	25	33	28	34	30	35	390
		Total	124	140	138	112	139	137	101	116	112	130	123	126	129	1627
	Gloucester West	CPS	106	119	125	103	118	104	91	85	86	123	113	100	105	1378
		CWS	42	32	40	36	17	39	29	34	34	29	31	26	34	423
		Total	148	151	165	139	135	143	120	119	120	152	144	126	139	1801
	County Totals	CPS	202	231	234	188	222	210	165	176	165	225	202	196	199	2615
		CWS	70	60	69	63	52	70	56	59	67	57	65	56	69	813
		Total	272	291	303	251	274	280	221	235	232	282	267	252	268	3428
HUDSON	Hudson Central	CPS	80	69	80	89	78	84	59	52	69	71	87	83	103	1004
		CWS	39	34	27	26	34	32	23	26	35	34	41	38	46	435
		Total	119	103	107	115	112	116	82	78	104	105	128	121	149	1439
	Hudson North	CPS	85	78	87	69	103	67	67	42	72	76	83	87	75	991
		CWS	30	36	42	21	38	39	19	14	31	29	33	21	29	382
		Total	115	114	129	90	141	106	86	56	103	105	116	108	104	1373
	Hudson South	CPS	86	91	75	53	101	70	53	45	80	86	68	46	57	911
		CWS	36	30	36	16	45	33	16	21	27	39	17	19	26	361
		Total	122	121	111	69	146	103	69	66	107	125	85	65	83	1272
	Hudson West	CPS	63	53	71	74	89	77	33	66	74	87	104	89	74	954
		CWS	30	22	35	31	31	32	25	24	30	30	21	35	29	375
		Total	93	75	106	105	120	109	58	90	104	117	125	124	103	1329
County Totals	CPS	314	291	313	285	371	298	212	205	295	320	342	305	309	3860	
	CWS	135	122	140	94	148	136	83	85	123	132	112	113	130	1553	
	Total	449	413	453	379	519	434	295	290	418	452	454	418	439	5413	
HUNTERDON	Hunterdon	CPS	32	36	47	27	38	31	30	32	46	40	30	44	43	476
		CWS	14	13	10	12	21	6	19	8	18	24	20	16	17	198
		Total	46	49	57	39	59	37	49	40	64	64	50	60	60	674
	County Totals	CPS	32	36	47	27	38	31	30	32	46	40	30	44	43	476
		CWS	14	13	10	12	21	6	19	8	18	24	20	16	17	198
Total		46	49	57	39	59	37	49	40	64	64	50	60	60	674	
MERCER	Mercer North	CPS	107	91	95	89	120	98	62	94	103	104	105	79	94	1241
		CWS	37	31	45	23	47	29	35	20	49	34	38	35	46	469
		Total	144	122	140	112	167	127	97	114	152	138	143	114	140	1710
	Mercer South	CPS	109	89	105	104	118	113	78	83	109	109	112	86	89	1304
		CWS	35	25	32	35	42	32	35	25	46	35	43	32	35	452
		Total	144	114	137	139	160	145	113	108	155	144	155	118	124	1756
	County Totals	CPS	216	180	200	193	238	211	140	177	212	213	217	165	183	2545
		CWS	72	56	77	58	89	61	70	45	95	69	81	67	81	921
Total		288	236	277	251	327	272	210	222	307	282	298	232	264	3466	

Data in this report is preliminary and may differ from any final report. This report is produced to ensure continuous quality improvement throughout DCF.



Table 5: Monthly Count of CPS Reports and CWS Referrals Assigned to CP&P Local Offices

County	Local Office	Type of Referral	Jan 2017	Feb 2017	Mar 2017	Apr 2017	May 2017	Jun 2017	Jul 2017	Aug 2017	Sep 2017	Oct 2017	Nov 2017	Dec 2017	Jan 2018	Total
MIDDLESEX	Middlesex Central	CPS	91	78	105	103	95	78	75	44	99	102	115	87	139	1211
		CWS	27	24	21	22	39	25	29	17	36	41	35	35	40	391
		Total	118	102	126	125	134	103	104	61	135	143	150	122	179	1602
	Middlesex Coastal	CPS	121	150	151	121	135	112	98	75	112	142	124	121	127	1589
		CWS	46	42	40	32	47	43	23	28	41	51	53	33	51	530
		Total	167	192	191	153	182	155	121	103	153	193	177	154	178	2119
	Middlesex West	CPS	154	149	148	119	160	111	90	62	112	141	140	106	132	1624
		CWS	29	33	49	34	54	35	35	31	20	56	58	37	51	522
		Total	183	182	197	153	214	146	125	93	132	197	198	143	183	2146
	County Totals	CPS	366	377	404	343	390	301	263	181	323	385	379	314	398	4424
CWS		102	99	110	88	140	103	87	76	97	148	146	105	142	1443	
Total		468	476	514	431	530	404	350	257	420	533	525	419	540	5867	
MONMOUTH	Monmouth North	CPS	160	159	154	149	174	145	126	103	139	173	152	125	160	1919
		CWS	49	41	47	34	64	52	30	32	38	54	54	44	61	600
		Total	209	200	201	183	238	197	156	135	177	227	206	169	221	2519
	Monmouth South	CPS	130	120	149	113	144	119	85	97	120	161	133	114	150	1635
		CWS	52	54	49	53	53	41	35	32	52	54	42	44	42	603
		Total	182	174	198	166	197	160	120	129	172	215	175	158	192	2238
	County Totals	CPS	290	279	303	262	318	264	211	200	259	334	285	239	310	3554
		CWS	101	95	96	87	117	93	65	64	90	108	96	88	103	1203
		Total	391	374	399	349	435	357	276	264	349	442	381	327	413	4757
MORRIS	Morris East	CPS	72	68	78	83	88	82	53	52	60	81	86	66	96	965
		CWS	27	23	38	31	28	29	21	26	35	36	38	31	40	403
		Total	99	91	116	114	116	111	74	78	95	117	124	97	136	1368
	Morris West	CPS	78	97	89	90	104	93	70	64	85	112	99	88	86	1155
		CWS	41	31	39	35	40	35	19	26	36	61	27	34	47	471
		Total	119	128	128	125	144	128	89	90	121	173	126	122	133	1626
	County Totals	CPS	150	165	167	173	192	175	123	116	145	193	185	154	182	2120
		CWS	68	54	77	66	68	64	40	52	71	97	65	65	87	874
		Total	218	219	244	239	260	239	163	168	216	290	250	219	269	2994
OCEAN	Ocean North	CPS	163	136	180	165	193	148	122	121	134	179	181	168	163	2053
		CWS	47	40	48	43	60	41	38	46	37	52	45	36	56	589
		Total	210	176	228	208	253	189	160	167	171	231	226	204	219	2642
	Ocean South	CPS	159	163	156	148	182	133	134	130	129	144	142	121	159	1900
		CWS	47	39	36	34	38	55	45	54	42	47	50	31	33	551
		Total	206	202	192	182	220	188	179	184	171	191	192	152	192	2451
	County Totals	CPS	322	299	336	313	375	281	256	251	263	323	323	289	322	3953
		CWS	94	79	84	77	98	96	83	100	79	99	95	67	89	1140
		Total	416	378	420	390	473	377	339	351	342	422	418	356	411	5093
PASSAIC	Passaic Central	CPS	184	175	182	168	197	150	117	128	172	228	199	155	173	2228
		CWS	85	73	84	63	82	52	40	40	60	90	76	78	65	888
		Total	269	248	266	231	279	202	157	168	232	318	275	233	238	3116
	Passaic North	CPS	178	120	182	130	194	157	119	104	130	176	158	131	134	1913
		CWS	71	45	74	51	77	65	48	47	63	82	80	57	79	839
		Total	249	165	256	181	271	222	167	151	193	258	238	188	213	2752
	County Totals	CPS	362	295	364	298	391	307	236	232	302	404	357	286	307	4141
		CWS	156	118	158	114	159	117	88	87	123	172	156	135	144	1727
		Total	518	413	522	412	550	424	324	319	425	576	513	421	451	5868
SALEM	Salem	CPS	80	57	61	72	65	68	52	45	82	67	77	58	68	852
		CWS	13	16	17	15	25	17	22	9	20	16	23	22	22	237
		Total	93	73	78	87	90	85	74	54	102	83	100	80	90	1089
	County Totals	CPS	80	57	61	72	65	68	52	45	82	67	77	58	68	852
		CWS	13	16	17	15	25	17	22	9	20	16	23	22	22	237
Total	93	73	78	87	90	85	74	54	102	83	100	80	90	1089		
SOMERSET	Somerset	CPS	111	109	126	122	135	121	74	83	97	136	130	119	119	1482
		CWS	36	37	52	31	45	30	37	34	30	30	39	53	37	491
		Total	147	146	178	153	180	151	111	117	127	166	169	172	156	1973
	County Totals	CPS	111	109	126	122	135	121	74	83	97	136	130	119	119	1482
		CWS	36	37	52	31	45	30	37	34	30	30	39	53	37	491
Total	147	146	178	153	180	151	111	117	127	166	169	172	156	1973		

Data in this report is preliminary and may differ from any final report. This report is produced to ensure continuous quality improvement throughout DCF.

Table 5: Monthly Count of CPS Reports and CWS Referrals Assigned to CP&P Local Offices

County	Local Office	Type of Referral	Jan 2017	Feb 2017	Mar 2017	Apr 2017	May 2017	Jun 2017	Jul 2017	Aug 2017	Sep 2017	Oct 2017	Nov 2017	Dec 2017	Jan 2018	Total
SUSSEX	Sussex	CPS	71	68	85	52	70	67	52	67	69	80	86	70	85	922
		CWS	30	16	21	22	32	26	20	25	23	26	25	22	41	329
		Total	101	84	106	74	102	93	72	92	92	106	111	92	126	1251
	County Totals	CPS	71	68	85	52	70	67	52	67	69	80	86	70	85	922
		CWS	30	16	21	22	32	26	20	25	23	26	25	22	41	329
		Total	101	84	106	74	102	93	72	92	92	106	111	92	126	1251
UNION	Union Central	CPS	86	75	94	80	87	84	73	72	68	74	84	91	88	1056
		CWS	38	20	31	21	21	35	30	21	40	31	18	19	30	355
		Total	124	95	125	101	108	119	103	93	108	105	102	110	118	1411
	Union East	CPS	98	82	94	82	97	97	55	69	91	88	91	75	102	1121
		CWS	29	25	22	30	35	27	15	15	31	39	26	29	26	349
		Total	127	107	116	112	132	124	70	84	122	127	117	104	128	1470
	Union West	CPS	68	67	87	86	94	57	53	51	86	88	88	83	77	985
		CWS	22	34	33	18	41	35	29	18	29	33	36	27	38	393
		Total	90	101	120	104	135	92	82	69	115	121	124	110	115	1378
	County Totals	CPS	252	224	275	248	278	238	181	192	245	250	263	249	267	3162
		CWS	89	79	86	69	97	97	74	54	100	103	80	75	94	1097
		Total	341	303	361	317	375	335	255	246	345	353	343	324	361	4259
WARREN	Warren	CPS	88	68	68	61	64	68	80	50	83	98	69	50	75	922
		CWS	20	28	27	23	21	31	29	19	34	33	33	22	19	339
		Total	108	96	95	84	85	99	109	69	117	131	102	72	94	1261
	County Totals	CPS	88	68	68	61	64	68	80	50	83	98	69	50	75	922
		CWS	20	28	27	23	21	31	29	19	34	33	33	22	19	339
		Total	108	96	95	84	85	99	109	69	117	131	102	72	94	1261
County CPS Referral Total		CPS	4,794	4,413	5,003	4,489	5,407	4,531	3,569	3,598	4,407	5,202	4,876	4,302	4,955	59,546
County CWS Referral Total		CWS	1,665	1,464	1,784	1,436	1,868	1,596	1,330	1,266	1,583	1,889	1,713	1,543	1,740	20,877
County Referral Total		Total	6,459	5,877	6,787	5,925	7,275	6,127	4,899	4,864	5,990	7,091	6,589	5,845	6,695	80,423
Central Region IAIU	CPS	41	58	54	50	75	67	42	55	54	68	73	55	62	754	
	CWS	0	0	0	0	0	0	0	0	0	0	0	0	0	0	
	Total	41	58	54	50	75	67	42	55	54	68	73	55	62	754	
Metro Region IAIU	CPS	61	54	68	51	69	48	34	25	41	58	48	56	54	667	
	CWS	0	0	0	0	0	0	0	0	0	0	0	0	0	0	
	Total	61	54	68	51	69	48	34	25	41	58	48	56	54	667	
Northern Region IAIU	CPS	65	58	68	48	87	49	47	34	51	70	58	54	60	749	
	CWS	0	0	0	0	0	0	0	0	0	0	0	0	0	0	
	Total	65	58	68	48	87	49	47	34	51	70	58	54	60	749	
Southern Region IAIU	CPS	76	71	87	76	108	80	50	63	66	102	77	84	90	1,030	
	CWS	0	0	0	0	0	0	0	0	0	0	0	0	0	0	
	Total	76	71	87	76	108	80	50	63	66	102	77	84	90	1,030	
IAIU CPS Subtotal		CPS	243	241	277	225	339	244	173	177	212	298	256	249	266	3,200
IAIU CWS Subtotal		CWS	0	0	0	0	0	0	0	0	0	0	0	0	0	0
IAIU Subtotal		Total	243	241	277	225	339	244	173	177	212	298	256	249	266	3,200
County and IAIU CPS Subtotal		CPS	5,037	4,654	5,280	4,714	5,746	4,775	3,742	3,775	4,619	5,500	5,132	4,551	5,221	62,746
County and IAIU CWS Subtotal		CWS	1,665	1,464	1,784	1,436	1,868	1,596	1,330	1,266	1,583	1,889	1,713	1,543	1,740	20,877
Unable to Determine ⁽¹⁾		Total	113	100	126	127	152	146	129	163	158	187	129	98	94	1,722
Other Offices		Total	4	2	2	3	0	1	2	2	2	3	2	3	5	31
Grand Total		Total	6,819	6,220	7,192	6,280	7,766	6,518	5,203	5,206	6,362	7,579	6,976	6,195	7,060	85,376

⁽¹⁾CPS Reports or CWS Referrals not assigned to an office through the Assignment Designee, but were assigned to an office for an assessment or investigation.