



## **Child Protection and Permanency**

# **Monthly Screening and Investigation Report January 2019**

Christine Norbut Beyer, MSW  
Commissioner

February 8, 2019



## Table of Contents

Table 1: NJ State Central Registry Activity: Monthly Child Abuse and Neglect Hotline Calls, Intakes and Assignments to Child Protection & Permanency (CP&P) Offices

---

Chart 1: CP&P Annual Trends in Child Protection Services (CPS) Reports and Child Welfare Services (CWS) Referrals

---

Table 2: Assignments to CP&P Offices: CPS Reports and CWS Referrals

---

Table 3: Source of CPS Reports and CWS Referrals

---

Table 4: Monthly Count of CPS Reports and CWS Referrals Assigned to Counties

---

Table 5: Monthly Count of CPS Reports and CWS Referrals Assigned to CP&P Local Offices

---

**Table 1: NJ State Central Registry Activity: Monthly Child Abuse and Neglect Hotline Calls, Intakes and Assignments to CP&P Offices<sup>1,2,7</sup>**

2017 - 2018	Hotline Call Activity				Intakes Recorded in NJ SPIRIT <sup>6,8</sup>												Assignments to CP&P Offices				
	Total Calls to SCR <sup>3</sup>	Abandon Calls <sup>4</sup>	Average Time to Answer (seconds)	Resulting NJS Intakes <sup>5</sup>	CPS Reports		CWS Referrals		No Action Required (NAR)		Related Information (RI)		Information & Referral (I&R)		Information Only (IO)		CPS Reports		CWS Referrals		Total
					n	%	n	%	n	%	n	%	n	%	n	%	n	%	n	%	
January 2018	14,876	952	60	15,833	5,276	33.3%	1,784	11.3%	242	1.5%	4,346	27.4%	1,755	11.1%	2,430	15.3%	5,276	74.7%	1,784	25.3%	7,060
February 2018	13,558	727	54	14,638	4,933	33.7%	1,643	11.2%	251	1.7%	3,807	26.0%	1,740	11.9%	2,264	15.5%	4,933	75.0%	1,644	25.0%	6,577
March 2018	14,714	804	55	15,869	5,212	32.8%	1,727	10.9%	288	1.8%	4,187	26.4%	1,855	11.7%	2,600	16.4%	5,212	75.1%	1,727	24.9%	6,939
April 2018	14,148	727	54	15,227	5,275	34.6%	1,603	10.5%	252	1.7%	3,952	26.0%	1,818	11.9%	2,327	15.3%	5,275	76.7%	1,601	23.3%	6,876
May 2018	15,956	1,482	69	16,668	5,920	35.5%	1,833	11.0%	316	1.9%	4,104	24.6%	1,997	12.0%	2,498	15.0%	5,920	76.3%	1,836	23.7%	7,756
June 2018	13,796	1,021	72	14,490	4,948	34.1%	1,614	11.1%	264	1.8%	3,662	25.3%	1,693	11.7%	2,309	15.9%	4,948	75.4%	1,615	24.6%	6,563
July 2018	11,406	407	35	12,497	4,011	32.1%	1,307	10.5%	214	1.7%	3,387	27.1%	1,374	11.0%	2,204	17.6%	4,011	75.4%	1,308	24.6%	5,319
August 2018	11,633	460	43	12,708	4,102	32.3%	1,409	11.1%	252	2.0%	3,455	27.2%	1,307	10.3%	2,183	17.2%	4,102	74.4%	1,408	25.6%	5,510
September 2018	13,554	925	64	14,277	4,748	33.3%	1,632	11.4%	217	1.5%	3,914	27.4%	1,448	10.1%	2,318	16.2%	4,748	74.4%	1,634	25.6%	6,382
October 2018	15,489	904	68	16,470	5,790	35.2%	2,008	12.2%	260	1.6%	4,103	24.9%	1,827	11.1%	2,482	15.1%	5,790	74.2%	2,011	25.8%	7,801
November 2018	13,533	1,111	80	14,067	4,973	35.4%	1,621	11.5%	210	1.5%	3,749	26.7%	1,453	10.3%	2,061	14.7%	4,973	75.4%	1,620	24.6%	6,593
December 2018	13,020	971	78	13,683	4,891	35.7%	1,524	11.1%	174	1.3%	3,518	25.7%	1,446	10.6%	2,130	15.6%	4,891	76.2%	1,527	23.8%	6,418
<b>January 2019</b>	<b>14,566</b>	<b>1,097</b>	<b>91</b>	<b>15,153</b>	<b>5,443</b>	<b>35.9%</b>	<b>1,858</b>	<b>12.3%</b>	<b>224</b>	<b>1.5%</b>	<b>3,764</b>	<b>24.8%</b>	<b>1,673</b>	<b>11.0%</b>	<b>2,191</b>	<b>14.5%</b>	<b>5,443</b>	<b>74.6%</b>	<b>1,858</b>	<b>25.4%</b>	<b>7,301</b>
	<b>13,865</b>	<b>891</b>	<b>63</b>	<b>14,737</b>	<b>5,040</b>	<b>34.2%</b>	<b>1,659</b>	<b>11.3%</b>	<b>243</b>	<b>1.7%</b>	<b>3,842</b>	<b>26.1%</b>	<b>1,645</b>	<b>11.2%</b>	<b>2,307</b>	<b>15.7%</b>	<b>5,040</b>	<b>75.2%</b>	<b>1,659</b>	<b>24.8%</b>	<b>6,700</b>
<b>Overall Total</b>	<b>180,249</b>	<b>11,588</b>		<b>191,580</b>	<b>65,522</b>		<b>21,563</b>		<b>3,164</b>		<b>49,948</b>		<b>21,386</b>		<b>29,997</b>		<b>65,522</b>	<b>75.2%</b>	<b>21,573</b>	<b>24.8%</b>	<b>87,095</b>

<sup>1</sup>Comes from three distinct sources: (1) the Automatic Call Distribution (ACD) phone system; which keeps a count of the number of calls and call routing; (2) Monthly NJSpirit Intakes; which record decision making on calls received by hotline screeners, and (3) NJSpirit extracts of assigned CWS Referrals and CPS Reports.

<sup>2</sup>The number of Intakes, CPS Reports, and CWS Referrals are based on an extract from NJSpirit. Data extracted by the Office of Research, Evaluation, and Reporting on **February 8, 2019** includes all Intakes, CPS Reports, and CWS Referrals received from **January 1, 2019 through January 31, 2019**.

<sup>3</sup>The number calls received through the ACD System that were directed to a screener from any call-in phone number.

<sup>4</sup>The number of calls received through the ACD System that are abandoned either while waiting in queue or while ringing.

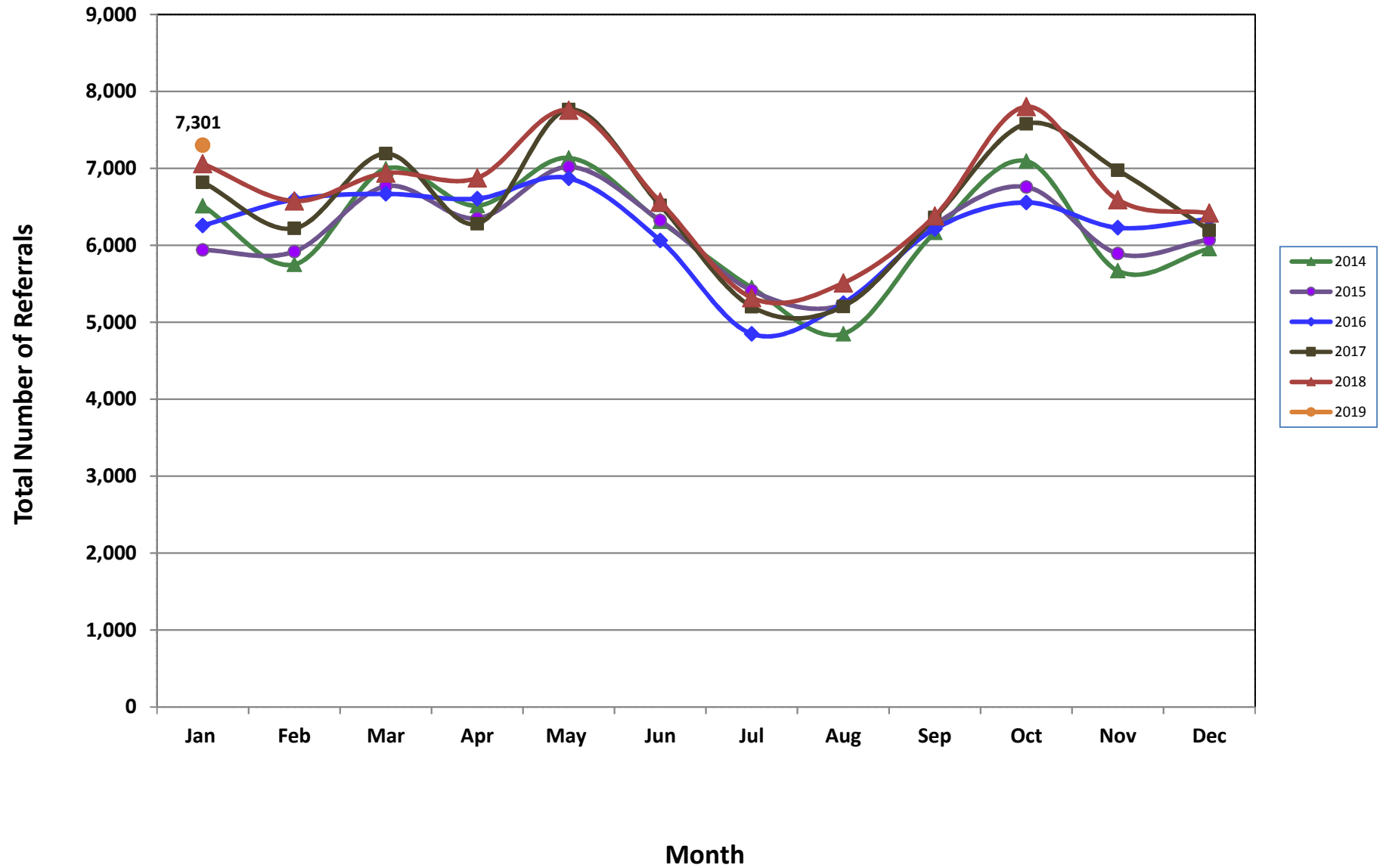
<sup>5</sup>The number of Intakes entered in NJSpirit from the number of calls received.

<sup>6</sup>The number of Intakes recorded in NJSpirit, by type of Intake. There is not a one-to-one relationship between an ACD call and an Intake; multiple calls to State Central Registry (SCR) may result in a single Intake, or one call may result in multiple Intakes.

<sup>7</sup>Intake: The process of documenting: a report of alleged abuse or neglect of a child (CPS); a request for services on behalf of a child, or a referral of a child for services (CWS); a call in which the caller provides additional or clarifying information about a current service case or active investigation (RI); informing a caller of, or referring a caller to, services available from other private or public sources (I&R); a call that requires no action by CP&P (NAR); or a response to a simple inquiry (IO).

<sup>8</sup>NJ SPIRIT: NJ Statewide Protection Investigation and Reporting Information Tool case management system

### CP&P Annual Trends in CPS Reports and CWS Referrals



**Table 2: Assignments to CP&P Offices: CPS Reports and CWS Referrals<sup>1</sup>**

Intake Date <sup>3</sup>		CPS Reports <sup>2</sup>	CWS Referrals <sup>2</sup>	Total Assignments <sup>2</sup>
2014	Jan 2014	5,097	1,416	6,513
	Feb 2014	4,457	1,295	5,752
	Mar 2014	5,408	1,586	6,994
	Apr 2014	5,049	1,467	6,516
	May 2014	5,501	1,635	7,136
	Jun 2014	4,796	1,517	6,313
	Jul 2014	4,202	1,247	5,449
	Aug 2014	3,629	1,222	4,851
	Sep 2014	4,668	1,498	6,166
	Oct 2014	5,509	1,586	7,095
	Nov 2014	4,254	1,416	5,670
	Dec 2014	4,509	1,447	5,956
	<b>Total</b>	<b>57,079</b>	<b>17,332</b>	<b>74,411</b>
2015	Jan 2015	4,549	1,391	5,940
	Feb 2015	4,574	1,345	5,919
	Mar 2015	5,187	1,580	6,767
	Apr 2015	4,967	1,384	6,351
	May 2015	5,457	1,561	7,018
	Jun 2015	4,887	1,436	6,323
	Jul 2015	4,140	1,273	5,413
	Aug 2015	3,978	1,256	5,234
	Sep 2015	4,776	1,495	6,271
	Oct 2015	5,139	1,619	6,758
	Nov 2015	4,417	1,477	5,894
	Dec 2015	4,530	1,544	6,074
	<b>Total</b>	<b>56,601</b>	<b>17,361</b>	<b>73,962</b>
2016	Jan 2016	4,686	1,571	6,257
	Feb 2016	4,974	1,622	6,596
	Mar 2016	5,000	1,669	6,669
	Apr 2016	5,065	1,542	6,607
	May 2016	5,238	1,633	6,871
	Jun 2016	4,602	1,461	6,063
	Jul 2016	3,663	1,187	4,850
	Aug 2016	3,941	1,307	5,248
	Sep 2016	4,654	1,559	6,213
	Oct 2016	4,935	1,622	6,557
	Nov 2016	4,677	1,552	6,229
	Dec 2016	4,762	1,580	6,342
	<b>Total</b>	<b>56,197</b>	<b>18,305</b>	<b>74,502</b>

**Table 2: Assignments to CP&P Offices: CPS Reports and CWS Referrals<sup>1</sup>**

Intake Date <sup>3</sup>		CPS Reports <sup>2</sup>	CWS Referrals <sup>2</sup>	Total Assignments <sup>2</sup>
2017	Jan 2017	5,111	1,708	6,819
	Feb 2017	4,716	1,504	6,220
	Mar 2017	5,349	1,843	7,192
	Apr 2017	4,790	1,490	6,280
	May 2017	5,847	1,919	7,766
	Jun 2017	4,853	1,665	6,518
	Jul 2017	3,814	1,389	5,203
	Aug 2017	3,866	1,340	5,206
	Sep 2017	4,719	1,643	6,362
	Oct 2017	5,613	1,966	7,579
	Nov 2017	5,223	1,753	6,976
	Dec 2017	4,601	1,594	6,195
	<b>Total</b>	<b>58,502</b>	<b>19,814</b>	<b>78,316</b>
2018	Jan 2018	5,276	1,784	7,060
	Feb 2018	4,933	1,644	6,577
	Mar 2018	5,212	1,727	6,939
	Apr 2018	5,275	1,601	6,876
	May 2018	5,920	1,836	7,756
	Jun 2018	4,948	1,615	6,563
	Jul 2018	4,011	1,308	5,319
	Aug 2018	4,102	1,408	5,510
	Sep 2018	4,748	1,634	6,382
	Oct 2018	5,790	2,011	7,801
	Nov 2018	4,973	1,620	6,593
	Dec 2018	4,891	1,527	6,418
	<b>Total</b>	<b>60,079</b>	<b>19,715</b>	<b>79,794</b>
2019	Jan 2019	5,443	1,858	7,301
	<b>Total</b>	<b>5,443</b>	<b>1,858</b>	<b>7,301</b>
<b>Grand Total</b>		<b>293,901</b>	<b>94,385</b>	<b>388,286</b>

<sup>1</sup>Source of Data: NJ SPIRIT

<sup>2</sup>A CPS Report or a CWS Referral may include multiple children in a family, with one or more allegation or request for services. In these cases, each CPS Report or CWS Referral is counted once - the CPS Report or the CWS Referral is the unit of analysis rather than the child.

<sup>3</sup>Prior to January 2014, the number of CPS Reports and CWS Referrals was based on the type of assignment of the CPS Report or CWS Referral. Beginning in January 2014, the number of CPS Reports and CWS Referrals is based on the number of CPS Reports and CWS Referrals received.

**Table 3: Source of CPS Reports and CWS Referrals**

	Source	Jan 2018	Feb 2018	Mar 2018	Apr 2018	May 2018	Jun 2018	Jul 2018	Aug 2018	Sep 2018	Oct 2018	Nov 2018	Dec 2018	Jan 2019		13 Month Total	
CPS Reports and CWS Referrals	School Staff	1932	1970	1969	1783	2213	1243	184	118	1237	2256	1769	1643	2151	29%	20,468	24%
	Healthcare Provider	1003	809	931	932	994	885	904	920	928	1018	954	891	999	14%	12,168	14%
	Law Enforcement	1018	1001	1149	1179	1264	1220	1238	1201	1251	1188	1186	1186	1131	15%	15,212	17%
	Government Agency	392	410	466	417	446	441	436	468	428	521	430	387	417	6%	5,659	6%
	Parent	569	468	469	509	548	574	573	590	569	563	491	481	512	7%	6,916	8%
	Relative/Friend/Neighbor	531	394	440	475	496	517	475	488	475	452	370	393	447	6%	5,953	7%
	Anonymous	602	623	641	628	789	683	538	573	565	769	576	609	656	9%	8,252	9%
	CP&P	125	121	107	130	143	140	115	142	106	131	99	109	125	2%	1,593	2%
	Court/Legal	130	130	131	158	164	154	143	193	141	171	101	132	190	3%	1,938	2%
	Community Group/Individual	318	289	294	325	290	301	290	317	301	301	264	234	274	4%	3,798	4%
	Facility Staff (incl Correctional Facility)	85	70	72	68	97	64	101	135	103	97	86	79	88	1%	1,145	1%
	Child (Self)	49	33	41	38	34	49	38	53	35	51	30	35	23	0%	509	1%
	Other	294	242	207	217	261	272	267	289	228	262	218	226	270	4%	3,253	4%
	Daycare/Babysitter	12	17	22	17	17	20	17	23	15	21	19	13	18	0%	231	0%
	<b>Total</b>		<b>7,060</b>	<b>6,577</b>	<b>6,939</b>	<b>6,876</b>	<b>7,756</b>	<b>6,563</b>	<b>5,319</b>	<b>5,510</b>	<b>6,382</b>	<b>7,801</b>	<b>6,593</b>	<b>6,418</b>	<b>7,301</b>		<b>87,095</b>

**Table 4: Monthly Count of CPS Reports and CWS Referrals Assigned to Counties**

County														Average Number of Assignments Last 13 Months	Dec 18 to Jan 19 Numerical Difference
	Jan 2018	Feb 2018	Mar 2018	Apr 2018	May 2018	Jun 2018	Jul 2018	Aug 2018	Sep 2018	Oct 2018	Nov 2018	Dec 2018	Jan 2019		
Atlantic	291	208	267	260	326	284	213	231	295	280	264	243	285	265	42
Bergen	394	371	458	374	474	354	291	243	333	467	412	377	460	385	83
Burlington	315	307	290	312	302	304	284	246	270	348	313	318	338	304	20
Camden	634	526	559	562	643	564	472	485	543	606	515	469	577	550	108
Cape May	82	73	68	95	100	97	80	85	109	87	73	68	103	86	35
Cumberland	250	174	223	265	266	202	159	205	225	232	204	200	218	217	18
Essex	787	695	778	770	811	713	545	622	666	859	712	694	798	727	104
Gloucester	268	219	239	272	298	231	200	229	215	260	235	233	302	246	69
Hudson	439	386	466	454	509	412	330	342	426	540	420	425	475	433	50
Hunterdon	60	54	58	67	62	56	48	49	57	75	58	59	48	58	-11
Mercer	264	262	262	295	330	274	223	247	231	365	298	283	298	279	15
Middlesex	540	463	498	473	534	474	358	366	433	563	426	472	527	471	55
Monmouth	413	384	427	376	446	341	302	277	410	426	380	352	433	382	81
Morris	269	191	245	240	256	199	204	186	215	292	224	242	264	233	22
Ocean	411	364	420	397	427	398	357	371	386	482	450	408	428	408	20
Passaic	451	456	469	448	571	423	307	383	421	567	461	438	482	452	44
Salem	90	68	99	92	90	79	65	77	104	90	72	70	97	84	27
Somerset	156	157	179	174	180	189	141	128	155	200	181	165	160	167	-5
Sussex	126	90	102	124	112	118	82	82	99	120	81	97	100	103	3
Union	361	366	352	321	379	343	260	221	328	396	351	343	401	340	58
Warren	94	101	117	108	117	110	87	105	118	105	93	104	89	104	-15
<b>County Subtotals</b>	<b>6,695</b>	<b>5,915</b>	<b>6,576</b>	<b>6,479</b>	<b>7,233</b>	<b>6,165</b>	<b>5,008</b>	<b>5,180</b>	<b>6,039</b>	<b>7,360</b>	<b>6,223</b>	<b>6,060</b>	<b>6,883</b>	<b>6,294</b>	<b>823</b>
Central Region IAIU	62	58	63	62	89	64	40	57	39	67	63	47	61	59	14
Metro Region IAIU	54	63	48	52	78	60	40	38	50	65	61	51	55	55	4
Northern Region IAIU	60	53	53	69	88	60	42	34	63	71	70	64	58	60	-6
Southern Region IAIU	90	75	74	86	95	71	61	76	67	100	58	71	92	78	21
<b>IAIU Subtotals</b>	<b>266</b>	<b>249</b>	<b>238</b>	<b>269</b>	<b>350</b>	<b>255</b>	<b>183</b>	<b>205</b>	<b>219</b>	<b>303</b>	<b>252</b>	<b>233</b>	<b>266</b>	<b>253</b>	<b>33</b>
<b>Unable to Determine<sup>1</sup></b>	<b>94</b>	<b>407</b>	<b>122</b>	<b>125</b>	<b>169</b>	<b>137</b>	<b>128</b>	<b>122</b>	<b>123</b>	<b>135</b>	<b>117</b>	<b>121</b>	<b>149</b>	<b>150</b>	<b>28</b>
<b>Other Offices</b>	<b>5</b>	<b>6</b>	<b>3</b>	<b>3</b>	<b>4</b>	<b>6</b>	<b>0</b>	<b>3</b>	<b>1</b>	<b>3</b>	<b>1</b>	<b>4</b>	<b>3</b>	<b>3</b>	<b>-1</b>
<b>Grand Total</b>	<b>7,060</b>	<b>6,577</b>	<b>6,939</b>	<b>6,876</b>	<b>7,756</b>	<b>6,563</b>	<b>5,319</b>	<b>5,510</b>	<b>6,382</b>	<b>7,801</b>	<b>6,593</b>	<b>6,418</b>	<b>7,301</b>	<b>6,700</b>	<b>883</b>

<sup>1</sup>CPS Reports or CWS Referrals not assigned to an office through the Assignment Designee, but were assigned to an office for an assessment or investigation.





**Table 5: Monthly Count of CPS Reports and CWS Referrals Assigned to CP&P Local Offices**

County	Local Office	Type of Referral	Jan 2018	Feb 2018	Mar 2018	Apr 2018	May 2018	Jun 2018	Jul 2018	Aug 2018	Sep 2018	Oct 2018	Nov 2018	Dec 2018	Jan 2019	Total
ATLANTIC	Atlantic East	CPS	127	95	131	118	157	132	97	106	132	132	139	107	140	1,613
		CWS	36	29	28	32	40	49	31	46	43	50	40	43	32	499
		<b>Total</b>	<b>163</b>	<b>124</b>	<b>159</b>	<b>150</b>	<b>197</b>	<b>181</b>	<b>128</b>	<b>152</b>	<b>175</b>	<b>182</b>	<b>179</b>	<b>150</b>	<b>172</b>	<b>2,112</b>
	Atlantic West	CPS	94	68	75	88	98	74	68	60	89	80	73	72	86	1,025
		CWS	34	16	33	22	31	29	17	19	31	18	12	21	27	310
		<b>Total</b>	<b>128</b>	<b>84</b>	<b>108</b>	<b>110</b>	<b>129</b>	<b>103</b>	<b>85</b>	<b>79</b>	<b>120</b>	<b>98</b>	<b>85</b>	<b>93</b>	<b>113</b>	<b>1,335</b>
	County Totals	CPS	221	163	206	206	255	206	165	166	221	212	212	179	226	2,638
		CWS	70	45	61	54	71	78	48	65	74	68	52	64	59	809
		<b>Total</b>	<b>291</b>	<b>208</b>	<b>267</b>	<b>260</b>	<b>326</b>	<b>284</b>	<b>213</b>	<b>231</b>	<b>295</b>	<b>280</b>	<b>264</b>	<b>243</b>	<b>285</b>	<b>3,447</b>
BERGEN	Bergen Central	CPS	138	112	144	122	141	112	76	59	88	147	103	119	137	1,498
		CWS	40	44	54	37	58	52	32	25	44	60	51	39	67	603
		<b>Total</b>	<b>178</b>	<b>156</b>	<b>198</b>	<b>159</b>	<b>199</b>	<b>164</b>	<b>108</b>	<b>84</b>	<b>132</b>	<b>207</b>	<b>154</b>	<b>158</b>	<b>204</b>	<b>2,101</b>
	Bergen South	CPS	154	163	198	144	199	119	136	112	152	187	188	155	173	2,080
		CWS	62	52	62	71	76	71	47	47	49	73	70	64	83	827
		<b>Total</b>	<b>216</b>	<b>215</b>	<b>260</b>	<b>215</b>	<b>275</b>	<b>190</b>	<b>183</b>	<b>159</b>	<b>201</b>	<b>260</b>	<b>258</b>	<b>219</b>	<b>256</b>	<b>2,907</b>
	County Totals	CPS	292	275	342	266	340	231	212	171	240	334	291	274	310	3,578
		CWS	102	96	116	108	134	123	79	72	93	133	121	103	150	1,430
		<b>Total</b>	<b>394</b>	<b>371</b>	<b>458</b>	<b>374</b>	<b>474</b>	<b>354</b>	<b>291</b>	<b>243</b>	<b>333</b>	<b>467</b>	<b>412</b>	<b>377</b>	<b>460</b>	<b>5,008</b>
BURLINGTON	Burlington East	CPS	129	110	118	116	104	115	117	93	93	131	124	128	132	1,510
		CWS	39	46	35	36	46	45	37	33	31	53	38	38	41	518
		<b>Total</b>	<b>168</b>	<b>156</b>	<b>153</b>	<b>152</b>	<b>150</b>	<b>160</b>	<b>154</b>	<b>126</b>	<b>124</b>	<b>184</b>	<b>162</b>	<b>166</b>	<b>173</b>	<b>2,028</b>
	Burlington West	CPS	108	117	105	108	120	114	100	83	113	124	121	123	123	1,459
		CWS	39	34	32	52	32	30	30	37	33	40	30	29	42	460
		<b>Total</b>	<b>147</b>	<b>151</b>	<b>137</b>	<b>160</b>	<b>152</b>	<b>144</b>	<b>130</b>	<b>120</b>	<b>146</b>	<b>164</b>	<b>151</b>	<b>152</b>	<b>165</b>	<b>1,919</b>
	County Totals	CPS	237	227	223	224	224	229	217	176	206	255	245	251	255	2,969
		CWS	78	80	67	88	78	75	67	70	64	93	68	67	83	978
		<b>Total</b>	<b>315</b>	<b>307</b>	<b>290</b>	<b>312</b>	<b>302</b>	<b>304</b>	<b>284</b>	<b>246</b>	<b>270</b>	<b>348</b>	<b>313</b>	<b>318</b>	<b>338</b>	<b>3,947</b>
CAMDEN	Camden Central	CPS	157	108	126	111	141	109	113	109	103	116	110	104	137	1,544
		CWS	31	30	39	32	47	33	27	27	36	41	27	27	31	428
		<b>Total</b>	<b>188</b>	<b>138</b>	<b>165</b>	<b>143</b>	<b>188</b>	<b>142</b>	<b>140</b>	<b>136</b>	<b>139</b>	<b>157</b>	<b>137</b>	<b>131</b>	<b>168</b>	<b>1,972</b>
	Camden East	CPS	116	99	129	139	127	113	99	99	106	110	103	81	95	1,416
		CWS	39	37	32	30	30	41	32	36	44	39	29	26	35	450
		<b>Total</b>	<b>155</b>	<b>136</b>	<b>161</b>	<b>169</b>	<b>157</b>	<b>154</b>	<b>131</b>	<b>135</b>	<b>150</b>	<b>149</b>	<b>132</b>	<b>107</b>	<b>130</b>	<b>1,866</b>
	Camden North	CPS	118	114	105	106	120	115	80	74	91	119	94	96	110	1,342
		CWS	50	24	34	25	41	44	26	33	34	42	31	19	36	439
		<b>Total</b>	<b>168</b>	<b>138</b>	<b>139</b>	<b>131</b>	<b>161</b>	<b>159</b>	<b>106</b>	<b>107</b>	<b>125</b>	<b>161</b>	<b>125</b>	<b>115</b>	<b>146</b>	<b>1,781</b>
	Camden South	CPS	89	79	75	100	113	86	72	85	98	108	89	91	103	1,188
		CWS	34	35	19	19	24	23	23	22	31	31	32	25	30	348
		<b>Total</b>	<b>123</b>	<b>114</b>	<b>94</b>	<b>119</b>	<b>137</b>	<b>109</b>	<b>95</b>	<b>107</b>	<b>129</b>	<b>139</b>	<b>121</b>	<b>116</b>	<b>133</b>	<b>1,536</b>
	County Totals	CPS	480	400	435	456	501	423	364	367	398	453	396	372	445	5,490
		CWS	154	126	124	106	142	141	108	118	145	153	119	97	132	1,665
		<b>Total</b>	<b>634</b>	<b>526</b>	<b>559</b>	<b>562</b>	<b>643</b>	<b>564</b>	<b>472</b>	<b>485</b>	<b>543</b>	<b>606</b>	<b>515</b>	<b>469</b>	<b>577</b>	<b>7,155</b>
CAPE MAY	Cape May	CPS	64	47	46	69	81	76	60	73	89	64	56	60	79	864
		CWS	18	26	22	26	19	21	20	12	20	23	17	8	24	256
		<b>Total</b>	<b>82</b>	<b>73</b>	<b>68</b>	<b>95</b>	<b>100</b>	<b>97</b>	<b>80</b>	<b>85</b>	<b>109</b>	<b>87</b>	<b>73</b>	<b>68</b>	<b>103</b>	<b>1,120</b>
	County Totals	CPS	64	47	46	69	81	76	60	73	89	64	56	60	79	864
		CWS	18	26	22	26	19	21	20	12	20	23	17	8	24	256
		<b>Total</b>	<b>82</b>	<b>73</b>	<b>68</b>	<b>95</b>	<b>100</b>	<b>97</b>	<b>80</b>	<b>85</b>	<b>109</b>	<b>87</b>	<b>73</b>	<b>68</b>	<b>103</b>	<b>1,120</b>
CUMBERLAND	Cumberland East	CPS	62	36	55	60	56	58	47	44	60	55	47	45	43	668
		CWS	16	17	18	18	17	15	15	13	15	18	15	13	17	207
		<b>Total</b>	<b>78</b>	<b>53</b>	<b>73</b>	<b>78</b>	<b>73</b>	<b>73</b>	<b>62</b>	<b>57</b>	<b>75</b>	<b>73</b>	<b>62</b>	<b>58</b>	<b>60</b>	<b>875</b>
	Cumberland West	CPS	146	92	126	146	146	111	82	118	118	116	106	116	119	1,542
		CWS	26	29	24	41	47	18	15	30	32	43	36	26	39	406
		<b>Total</b>	<b>172</b>	<b>121</b>	<b>150</b>	<b>187</b>	<b>193</b>	<b>129</b>	<b>97</b>	<b>148</b>	<b>150</b>	<b>159</b>	<b>142</b>	<b>142</b>	<b>158</b>	<b>1,948</b>
	County Totals	CPS	208	128	181	206	202	169	129	162	178	171	153	161	162	2,210
		CWS	42	46	42	59	64	33	30	43	47	61	51	39	56	613
		<b>Total</b>	<b>250</b>	<b>174</b>	<b>223</b>	<b>265</b>	<b>266</b>	<b>202</b>	<b>159</b>	<b>205</b>	<b>225</b>	<b>232</b>	<b>204</b>	<b>200</b>	<b>218</b>	<b>2,823</b>

Data in this report is preliminary and may differ from any final report. This report is produced to ensure continuous quality improvement throughout DCF.



**Table 5: Monthly Count of CPS Reports and CWS Referrals Assigned to CP&P Local Offices**

County	Local Office	Type of Referral	Month													Total
			Jan 2018	Feb 2018	Mar 2018	Apr 2018	May 2018	Jun 2018	Jul 2018	Aug 2018	Sep 2018	Oct 2018	Nov 2018	Dec 2018	Jan 2019	
ESSEX	Essex Central	CPS	93	77	107	103	113	95	70	92	68	97	103	90	107	1,215
		CWS	42	22	35	36	39	23	21	23	41	35	35	26	37	415
		<b>Total</b>	<b>135</b>	<b>99</b>	<b>142</b>	<b>139</b>	<b>152</b>	<b>118</b>	<b>91</b>	<b>115</b>	<b>109</b>	<b>132</b>	<b>138</b>	<b>116</b>	<b>144</b>	<b>1,630</b>
	Essex North	CPS	80	71	75	70	83	62	41	61	65	82	74	65	72	901
		CWS	25	21	34	24	24	35	18	15	28	31	25	20	32	332
		<b>Total</b>	<b>105</b>	<b>92</b>	<b>109</b>	<b>94</b>	<b>107</b>	<b>97</b>	<b>59</b>	<b>76</b>	<b>93</b>	<b>113</b>	<b>99</b>	<b>85</b>	<b>104</b>	<b>1,233</b>
	Essex South	CPS	83	64	63	83	65	92	46	76	63	80	70	77	86	948
		CWS	18	30	21	20	24	25	27	17	28	44	24	20	27	325
		<b>Total</b>	<b>101</b>	<b>94</b>	<b>84</b>	<b>103</b>	<b>89</b>	<b>117</b>	<b>73</b>	<b>93</b>	<b>91</b>	<b>124</b>	<b>94</b>	<b>97</b>	<b>113</b>	<b>1,273</b>
	Newark Center City	CPS	107	86	105	88	105	91	75	81	102	123	91	98	103	1255
		CWS	34	35	34	38	42	33	26	26	27	44	36	25	38	438
		<b>Total</b>	<b>141</b>	<b>121</b>	<b>139</b>	<b>126</b>	<b>147</b>	<b>124</b>	<b>101</b>	<b>107</b>	<b>129</b>	<b>167</b>	<b>127</b>	<b>123</b>	<b>141</b>	<b>1,693</b>
	Newark Northeast	CPS	107	97	97	99	104	81	71	84	76	117	105	101	111	1250
		CWS	44	39	44	38	40	42	24	35	29	58	30	24	28	475
		<b>Total</b>	<b>151</b>	<b>136</b>	<b>141</b>	<b>137</b>	<b>144</b>	<b>123</b>	<b>95</b>	<b>119</b>	<b>105</b>	<b>175</b>	<b>135</b>	<b>125</b>	<b>139</b>	<b>1,725</b>
Newark South	CPS	116	111	116	128	138	106	95	76	93	111	92	102	118	1402	
	CWS	38	42	47	43	34	28	31	36	46	37	27	46	39	494	
	<b>Total</b>	<b>154</b>	<b>153</b>	<b>163</b>	<b>171</b>	<b>172</b>	<b>134</b>	<b>126</b>	<b>112</b>	<b>139</b>	<b>148</b>	<b>119</b>	<b>148</b>	<b>157</b>	<b>1,896</b>	
County Totals	CPS	586	506	563	571	608	527	398	470	467	610	535	533	597	6971	
	CWS	201	189	215	199	203	186	147	152	199	249	177	161	201	2479	
	<b>Total</b>	<b>787</b>	<b>695</b>	<b>778</b>	<b>770</b>	<b>811</b>	<b>713</b>	<b>545</b>	<b>622</b>	<b>666</b>	<b>859</b>	<b>712</b>	<b>694</b>	<b>798</b>	<b>9,450</b>	
GLOUCESTER	Gloucester East	CPS	94	85	79	113	118	79	75	76	86	104	85	70	108	1172
		CWS	35	22	24	41	26	18	20	31	22	41	25	30	29	364
		<b>Total</b>	<b>129</b>	<b>107</b>	<b>103</b>	<b>154</b>	<b>144</b>	<b>97</b>	<b>95</b>	<b>107</b>	<b>108</b>	<b>145</b>	<b>110</b>	<b>100</b>	<b>137</b>	<b>1,536</b>
	Gloucester West	CPS	105	93	100	96	118	100	82	101	79	92	95	105	130	1296
		CWS	34	19	36	22	36	34	23	21	28	23	30	28	35	369
		<b>Total</b>	<b>139</b>	<b>112</b>	<b>136</b>	<b>118</b>	<b>154</b>	<b>134</b>	<b>105</b>	<b>122</b>	<b>107</b>	<b>115</b>	<b>125</b>	<b>133</b>	<b>165</b>	<b>1,665</b>
	County Totals	CPS	199	178	179	209	236	179	157	177	165	196	180	175	238	2468
		CWS	69	41	60	63	62	52	43	52	50	64	55	58	64	733
		<b>Total</b>	<b>268</b>	<b>219</b>	<b>239</b>	<b>272</b>	<b>298</b>	<b>231</b>	<b>200</b>	<b>229</b>	<b>215</b>	<b>260</b>	<b>235</b>	<b>233</b>	<b>302</b>	<b>3,201</b>
HUDSON	Hudson Central	CPS	103	88	98	115	131	93	83	89	93	141	91	117	107	1349
		CWS	46	37	36	36	56	57	38	39	43	43	37	41	47	556
		<b>Total</b>	<b>149</b>	<b>125</b>	<b>134</b>	<b>151</b>	<b>187</b>	<b>150</b>	<b>121</b>	<b>128</b>	<b>136</b>	<b>184</b>	<b>128</b>	<b>158</b>	<b>154</b>	<b>1,905</b>
	Hudson North	CPS	75	77	92	98	79	62	34	51	71	92	62	72	87	952
		CWS	29	12	32	26	38	22	19	14	26	33	28	27	40	346
		<b>Total</b>	<b>104</b>	<b>89</b>	<b>124</b>	<b>124</b>	<b>117</b>	<b>84</b>	<b>53</b>	<b>65</b>	<b>97</b>	<b>125</b>	<b>90</b>	<b>99</b>	<b>127</b>	<b>1,298</b>
	Hudson South	CPS	57	47	65	53	47	55	38	43	41	60	48	48	55	657
		CWS	26	19	24	15	18	19	16	17	34	23	35	22	15	283
		<b>Total</b>	<b>83</b>	<b>66</b>	<b>89</b>	<b>68</b>	<b>65</b>	<b>74</b>	<b>54</b>	<b>60</b>	<b>75</b>	<b>83</b>	<b>83</b>	<b>70</b>	<b>70</b>	<b>940</b>
	Hudson West	CPS	74	80	80	80	102	72	72	59	84	94	87	72	87	1043
		CWS	29	26	39	31	38	32	30	30	34	54	32	26	37	438
		<b>Total</b>	<b>103</b>	<b>106</b>	<b>119</b>	<b>111</b>	<b>140</b>	<b>104</b>	<b>102</b>	<b>89</b>	<b>118</b>	<b>148</b>	<b>119</b>	<b>98</b>	<b>124</b>	<b>1,481</b>
County Totals	CPS	309	292	335	346	359	282	227	242	289	387	288	309	336	4001	
	CWS	130	94	131	108	150	130	103	100	137	153	132	116	139	1623	
	<b>Total</b>	<b>439</b>	<b>386</b>	<b>466</b>	<b>454</b>	<b>509</b>	<b>412</b>	<b>330</b>	<b>342</b>	<b>426</b>	<b>540</b>	<b>420</b>	<b>425</b>	<b>475</b>	<b>5,624</b>	
HUNTERDON	Hunterdon	CPS	43	36	42	47	44	43	37	40	40	56	44	47	33	552
		CWS	17	18	16	20	18	13	11	9	17	19	14	12	15	199
		<b>Total</b>	<b>60</b>	<b>54</b>	<b>58</b>	<b>67</b>	<b>62</b>	<b>56</b>	<b>48</b>	<b>49</b>	<b>57</b>	<b>75</b>	<b>58</b>	<b>59</b>	<b>48</b>	<b>751</b>
	County Totals	CPS	43	36	42	47	44	43	37	40	40	56	44	47	33	552
		CWS	17	18	16	20	18	13	11	9	17	19	14	12	15	199
		<b>Total</b>	<b>60</b>	<b>54</b>	<b>58</b>	<b>67</b>	<b>62</b>	<b>56</b>	<b>48</b>	<b>49</b>	<b>57</b>	<b>75</b>	<b>58</b>	<b>59</b>	<b>48</b>	<b>751</b>
MERCER	Mercer North	CPS	94	103	95	124	125	107	81	107	84	139	113	110	117	1399
		CWS	46	43	42	34	39	32	31	28	25	57	50	31	39	497
		<b>Total</b>	<b>140</b>	<b>146</b>	<b>137</b>	<b>158</b>	<b>164</b>	<b>139</b>	<b>112</b>	<b>135</b>	<b>109</b>	<b>196</b>	<b>163</b>	<b>141</b>	<b>156</b>	<b>1,896</b>
	Mercer South	CPS	89	98	90	104	134	105	86	78	89	125	95	109	101	1303
		CWS	35	18	35	33	32	30	25	34	33	44	40	33	41	433
		<b>Total</b>	<b>124</b>	<b>116</b>	<b>125</b>	<b>137</b>	<b>166</b>	<b>135</b>	<b>111</b>	<b>112</b>	<b>122</b>	<b>169</b>	<b>135</b>	<b>142</b>	<b>142</b>	<b>1,736</b>
	County Totals	CPS	183	201	185	228	259	212	167	185	173	264	208	219	218	2702
		CWS	81	61	77	67	71	62	56	62	58	101	90	64	80	930
		<b>Total</b>	<b>264</b>	<b>262</b>	<b>262</b>	<b>295</b>	<b>330</b>	<b>274</b>	<b>223</b>	<b>247</b>	<b>231</b>	<b>365</b>	<b>298</b>	<b>283</b>	<b>298</b>	<b>3,632</b>

Data in this report is preliminary and may differ from any final report. This report is produced to ensure continuous quality improvement throughout DCF.



**Table 5: Monthly Count of CPS Reports and CWS Referrals Assigned to CP&P Local Offices**

County	Local Office	Type of Referral	Jan 2018	Feb 2018	Mar 2018	Apr 2018	May 2018	Jun 2018	Jul 2018	Aug 2018	Sep 2018	Oct 2018	Nov 2018	Dec 2018	Jan 2019	Total
MIDDLESEX	Middlesex Central	CPS	139	96	118	104	118	101	78	62	75	116	93	102	125	1327
		CWS	40	35	29	36	29	36	32	28	30	31	28	33	33	420
		<b>Total</b>	<b>179</b>	<b>131</b>	<b>147</b>	<b>140</b>	<b>147</b>	<b>137</b>	<b>110</b>	<b>90</b>	<b>105</b>	<b>147</b>	<b>121</b>	<b>135</b>	<b>158</b>	<b>1747</b>
	Middlesex Coastal	CPS	127	124	125	128	144	123	111	100	120	161	110	120	148	1641
		CWS	51	28	45	36	52	42	24	37	39	49	39	42	49	533
		<b>Total</b>	<b>178</b>	<b>152</b>	<b>170</b>	<b>164</b>	<b>196</b>	<b>165</b>	<b>135</b>	<b>137</b>	<b>159</b>	<b>210</b>	<b>149</b>	<b>162</b>	<b>197</b>	<b>2174</b>
	Middlesex West	CPS	132	134	148	128	146	128	83	88	129	168	108	138	126	1656
		CWS	51	46	33	41	45	44	30	51	40	38	48	37	46	550
		<b>Total</b>	<b>183</b>	<b>180</b>	<b>181</b>	<b>169</b>	<b>191</b>	<b>172</b>	<b>113</b>	<b>139</b>	<b>169</b>	<b>206</b>	<b>156</b>	<b>175</b>	<b>172</b>	<b>2206</b>
	County Totals	CPS	398	354	391	360	408	352	272	250	324	445	311	360	399	4624
CWS		142	109	107	113	126	122	86	116	109	118	115	112	128	1503	
<b>Total</b>		<b>540</b>	<b>463</b>	<b>498</b>	<b>473</b>	<b>534</b>	<b>474</b>	<b>358</b>	<b>366</b>	<b>433</b>	<b>563</b>	<b>426</b>	<b>472</b>	<b>527</b>	<b>6127</b>	
MONMOUTH	Monmouth North	CPS	160	167	162	149	174	152	118	107	159	165	133	158	190	1994
		CWS	61	60	58	56	61	34	36	36	61	62	42	49	64	680
		<b>Total</b>	<b>221</b>	<b>227</b>	<b>220</b>	<b>205</b>	<b>235</b>	<b>186</b>	<b>154</b>	<b>143</b>	<b>220</b>	<b>227</b>	<b>175</b>	<b>207</b>	<b>254</b>	<b>2674</b>
	Monmouth South	CPS	150	123	159	137	160	113	112	91	149	149	151	100	145	1739
		CWS	42	34	48	34	51	42	36	43	41	50	54	45	34	554
		<b>Total</b>	<b>192</b>	<b>157</b>	<b>207</b>	<b>171</b>	<b>211</b>	<b>155</b>	<b>148</b>	<b>134</b>	<b>190</b>	<b>199</b>	<b>205</b>	<b>145</b>	<b>179</b>	<b>2293</b>
	County Totals	CPS	310	290	321	286	334	265	230	198	308	314	284	258	335	3733
		CWS	103	94	106	90	112	76	72	79	102	112	96	94	98	1234
		<b>Total</b>	<b>413</b>	<b>384</b>	<b>427</b>	<b>376</b>	<b>446</b>	<b>341</b>	<b>302</b>	<b>277</b>	<b>410</b>	<b>426</b>	<b>380</b>	<b>352</b>	<b>433</b>	<b>4967</b>
MORRIS	Morris East	CPS	96	64	73	71	94	66	79	74	75	100	84	91	84	1051
		CWS	40	32	34	32	29	25	24	20	24	42	19	37	49	407
		<b>Total</b>	<b>136</b>	<b>96</b>	<b>107</b>	<b>103</b>	<b>123</b>	<b>91</b>	<b>103</b>	<b>94</b>	<b>99</b>	<b>142</b>	<b>103</b>	<b>128</b>	<b>133</b>	<b>1458</b>
	Morris West	CPS	86	63	97	103	107	77	75	74	84	118	92	89	89	1154
		CWS	47	32	41	34	26	31	26	18	32	32	29	25	42	415
		<b>Total</b>	<b>133</b>	<b>95</b>	<b>138</b>	<b>137</b>	<b>133</b>	<b>108</b>	<b>101</b>	<b>92</b>	<b>116</b>	<b>150</b>	<b>121</b>	<b>114</b>	<b>131</b>	<b>1569</b>
	County Totals	CPS	182	127	170	174	201	143	154	148	159	218	176	180	173	2205
		CWS	87	64	75	66	55	56	50	38	56	74	48	62	91	822
		<b>Total</b>	<b>269</b>	<b>191</b>	<b>245</b>	<b>240</b>	<b>256</b>	<b>199</b>	<b>204</b>	<b>186</b>	<b>215</b>	<b>292</b>	<b>224</b>	<b>242</b>	<b>264</b>	<b>3027</b>
OCEAN	Ocean North	CPS	163	133	161	167	166	144	163	143	154	203	178	163	165	2103
		CWS	56	43	44	40	69	51	34	38	40	68	60	46	65	654
		<b>Total</b>	<b>219</b>	<b>176</b>	<b>205</b>	<b>207</b>	<b>235</b>	<b>195</b>	<b>197</b>	<b>181</b>	<b>194</b>	<b>271</b>	<b>238</b>	<b>209</b>	<b>230</b>	<b>2757</b>
	Ocean South	CPS	159	146	174	146	149	167	124	135	160	166	170	160	147	2003
		CWS	33	42	41	44	43	36	36	55	32	45	42	39	51	539
		<b>Total</b>	<b>192</b>	<b>188</b>	<b>215</b>	<b>190</b>	<b>192</b>	<b>203</b>	<b>160</b>	<b>190</b>	<b>192</b>	<b>211</b>	<b>212</b>	<b>199</b>	<b>198</b>	<b>2542</b>
	County Totals	CPS	322	279	335	313	315	311	287	278	314	369	348	323	312	4106
		CWS	89	85	85	84	112	87	70	93	72	113	102	85	116	1193
		<b>Total</b>	<b>411</b>	<b>364</b>	<b>420</b>	<b>397</b>	<b>427</b>	<b>398</b>	<b>357</b>	<b>371</b>	<b>386</b>	<b>482</b>	<b>450</b>	<b>408</b>	<b>428</b>	<b>5299</b>
PASSAIC	Passaic Central	CPS	173	171	171	178	243	163	108	128	164	207	177	157	192	2232
		CWS	65	75	74	62	87	54	43	51	55	93	66	68	66	859
		<b>Total</b>	<b>238</b>	<b>246</b>	<b>245</b>	<b>240</b>	<b>330</b>	<b>217</b>	<b>151</b>	<b>179</b>	<b>219</b>	<b>300</b>	<b>243</b>	<b>225</b>	<b>258</b>	<b>3091</b>
	Passaic North	CPS	134	135	166	152	185	143	104	147	128	189	158	146	148	1935
		CWS	79	75	58	56	56	63	52	57	74	78	60	67	76	851
		<b>Total</b>	<b>213</b>	<b>210</b>	<b>224</b>	<b>208</b>	<b>241</b>	<b>206</b>	<b>156</b>	<b>204</b>	<b>202</b>	<b>267</b>	<b>218</b>	<b>213</b>	<b>224</b>	<b>2786</b>
	County Totals	CPS	307	306	337	330	428	306	212	275	292	396	335	303	340	4167
		CWS	144	150	132	118	143	117	95	108	129	171	126	135	142	1710
		<b>Total</b>	<b>451</b>	<b>456</b>	<b>469</b>	<b>448</b>	<b>571</b>	<b>423</b>	<b>307</b>	<b>383</b>	<b>421</b>	<b>567</b>	<b>461</b>	<b>438</b>	<b>482</b>	<b>5877</b>
SALEM	Salem	CPS	68	56	79	77	73	62	52	56	73	68	53	53	77	847
		CWS	22	12	20	15	17	17	13	21	31	22	19	17	20	246
		<b>Total</b>	<b>90</b>	<b>68</b>	<b>99</b>	<b>92</b>	<b>90</b>	<b>79</b>	<b>65</b>	<b>77</b>	<b>104</b>	<b>90</b>	<b>72</b>	<b>70</b>	<b>97</b>	<b>1093</b>
	County Totals	CPS	68	56	79	77	73	62	52	56	73	68	53	53	77	847
		CWS	22	12	20	15	17	17	13	21	31	22	19	17	20	246
<b>Total</b>	<b>90</b>	<b>68</b>	<b>99</b>	<b>92</b>	<b>90</b>	<b>79</b>	<b>65</b>	<b>77</b>	<b>104</b>	<b>90</b>	<b>72</b>	<b>70</b>	<b>97</b>	<b>1093</b>		
SOMERSET	Somerset	CPS	119	127	115	140	136	155	106	93	125	153	137	128	122	1656
		CWS	37	30	64	34	44	34	35	35	30	47	44	37	38	509
		<b>Total</b>	<b>156</b>	<b>157</b>	<b>179</b>	<b>174</b>	<b>180</b>	<b>189</b>	<b>141</b>	<b>128</b>	<b>155</b>	<b>200</b>	<b>181</b>	<b>165</b>	<b>160</b>	<b>2165</b>
	County Totals	CPS	119	127	115	140	136	155	106	93	125	153	137	128	122	1656
		CWS	37	30	64	34	44	34	35	35	30	47	44	37	38	509
<b>Total</b>	<b>156</b>	<b>157</b>	<b>179</b>	<b>174</b>	<b>180</b>	<b>189</b>	<b>141</b>	<b>128</b>	<b>155</b>	<b>200</b>	<b>181</b>	<b>165</b>	<b>160</b>	<b>2165</b>		

Data in this report is preliminary and may differ from any final report. This report is produced to ensure continuous quality improvement throughout DCF.

**Table 5: Monthly Count of CPS Reports and CWS Referrals Assigned to CP&P Local Offices**

County	Local Office	Type of Referral	Jan 2018	Feb 2018	Mar 2018	Apr 2018	May 2018	Jun 2018	Jul 2018	Aug 2018	Sep 2018	Oct 2018	Nov 2018	Dec 2018	Jan 2019	Total
SUSSEX	Sussex	CPS	85	64	70	90	87	94	62	60	72	90	64	67	77	982
		CWS	41	26	32	34	25	24	20	22	27	30	17	30	23	351
		<b>Total</b>	<b>126</b>	<b>90</b>	<b>102</b>	<b>124</b>	<b>112</b>	<b>118</b>	<b>82</b>	<b>82</b>	<b>99</b>	<b>120</b>	<b>81</b>	<b>97</b>	<b>100</b>	<b>1333</b>
	County Totals	CPS	85	64	70	90	87	94	62	60	72	90	64	67	77	982
		CWS	41	26	32	34	25	24	20	22	27	30	17	30	23	351
		<b>Total</b>	<b>126</b>	<b>90</b>	<b>102</b>	<b>124</b>	<b>112</b>	<b>118</b>	<b>82</b>	<b>82</b>	<b>99</b>	<b>120</b>	<b>81</b>	<b>97</b>	<b>100</b>	<b>1333</b>
UNION	Union Central	CPS	88	89	87	88	98	78	67	54	76	98	85	81	104	1093
		CWS	30	36	29	25	28	25	23	21	25	33	26	34	43	378
		<b>Total</b>	<b>118</b>	<b>125</b>	<b>116</b>	<b>113</b>	<b>126</b>	<b>103</b>	<b>90</b>	<b>75</b>	<b>101</b>	<b>131</b>	<b>111</b>	<b>115</b>	<b>147</b>	<b>1471</b>
	Union East	CPS	102	91	98	74	89	92	63	48	89	103	93	94	94	1130
		CWS	26	32	33	26	27	32	24	21	34	36	29	26	35	381
		<b>Total</b>	<b>128</b>	<b>123</b>	<b>131</b>	<b>100</b>	<b>116</b>	<b>124</b>	<b>87</b>	<b>69</b>	<b>123</b>	<b>139</b>	<b>122</b>	<b>120</b>	<b>129</b>	<b>1511</b>
	Union West	CPS	77	84	83	81	98	91	58	54	77	84	88	83	98	1056
		CWS	38	34	22	27	39	25	25	23	27	42	30	25	27	384
		<b>Total</b>	<b>115</b>	<b>118</b>	<b>105</b>	<b>108</b>	<b>137</b>	<b>116</b>	<b>83</b>	<b>77</b>	<b>104</b>	<b>126</b>	<b>118</b>	<b>108</b>	<b>125</b>	<b>1440</b>
	County Totals	CPS	267	264	268	243	285	261	188	156	242	285	266	258	296	3279
		CWS	94	102	84	78	94	82	72	65	86	111	85	85	105	1143
		<b>Total</b>	<b>361</b>	<b>366</b>	<b>352</b>	<b>321</b>	<b>379</b>	<b>343</b>	<b>260</b>	<b>221</b>	<b>328</b>	<b>396</b>	<b>351</b>	<b>343</b>	<b>401</b>	<b>4422</b>
WARREN	Warren	CPS	75	72	85	88	93	85	59	82	86	78	71	77	61	1012
		CWS	19	29	32	20	24	25	28	23	32	27	22	27	28	336
		<b>Total</b>	<b>94</b>	<b>101</b>	<b>117</b>	<b>108</b>	<b>117</b>	<b>110</b>	<b>87</b>	<b>105</b>	<b>118</b>	<b>105</b>	<b>93</b>	<b>104</b>	<b>89</b>	<b>1348</b>
	County Totals	CPS	75	72	85	88	93	85	59	82	86	78	71	77	61	1012
		CWS	19	29	32	20	24	25	28	23	32	27	22	27	28	336
		<b>Total</b>	<b>94</b>	<b>101</b>	<b>117</b>	<b>108</b>	<b>117</b>	<b>110</b>	<b>87</b>	<b>105</b>	<b>118</b>	<b>105</b>	<b>93</b>	<b>104</b>	<b>89</b>	<b>1348</b>
County CPS Referral Total		CPS	4,955	4,392	4,908	4,929	5,469	4,611	3,755	3,825	4,461	5,418	4,653	4,587	5,091	61,054
County CWS Referral Total		CWS	1,740	1,523	1,668	1,550	1,764	1,554	1,253	1,355	1,578	1,942	1,570	1,473	1,792	20,762
County Referral Total		<b>Total</b>	<b>6,695</b>	<b>5,915</b>	<b>6,576</b>	<b>6,479</b>	<b>7,233</b>	<b>6,165</b>	<b>5,008</b>	<b>5,180</b>	<b>6,039</b>	<b>7,360</b>	<b>6,223</b>	<b>6,060</b>	<b>6,883</b>	<b>81,816</b>
Central Region IAIU	CPS	62	58	63	62	89	64	40	57	39	67	63	47	61	772	
	CWS	0	0	0	0	0	0	0	0	0	0	0	0	0	0	
	<b>Total</b>	<b>62</b>	<b>58</b>	<b>63</b>	<b>62</b>	<b>89</b>	<b>64</b>	<b>40</b>	<b>57</b>	<b>39</b>	<b>67</b>	<b>63</b>	<b>47</b>	<b>61</b>	<b>772</b>	
Metro Region IAIU	CPS	54	63	48	52	78	60	40	38	50	65	61	51	55	715	
	CWS	0	0	0	0	0	0	0	0	0	0	0	0	0	0	
	<b>Total</b>	<b>54</b>	<b>63</b>	<b>48</b>	<b>52</b>	<b>78</b>	<b>60</b>	<b>40</b>	<b>38</b>	<b>50</b>	<b>65</b>	<b>61</b>	<b>51</b>	<b>55</b>	<b>715</b>	
Northern Region IAIU	CPS	60	53	53	69	88	60	42	34	63	71	70	64	58	785	
	CWS	0	0	0	0	0	0	0	0	0	0	0	0	0	0	
	<b>Total</b>	<b>60</b>	<b>53</b>	<b>53</b>	<b>69</b>	<b>88</b>	<b>60</b>	<b>42</b>	<b>34</b>	<b>63</b>	<b>71</b>	<b>70</b>	<b>64</b>	<b>58</b>	<b>785</b>	
Southern Region IAIU	CPS	90	75	74	86	95	71	61	76	67	100	58	71	92	1,016	
	CWS	0	0	0	0	0	0	0	0	0	0	0	0	0	0	
	<b>Total</b>	<b>90</b>	<b>75</b>	<b>74</b>	<b>86</b>	<b>95</b>	<b>71</b>	<b>61</b>	<b>76</b>	<b>67</b>	<b>100</b>	<b>58</b>	<b>71</b>	<b>92</b>	<b>1,016</b>	
IAIU CPS Subtotal		CPS	266	249	238	269	350	255	183	205	219	303	252	233	266	3,288
IAIU CWS Subtotal		CWS	0	0	0	0	0	0	0	0	0	0	0	0	0	0
IAIU Subtotal		<b>Total</b>	<b>266</b>	<b>249</b>	<b>238</b>	<b>269</b>	<b>350</b>	<b>255</b>	<b>183</b>	<b>205</b>	<b>219</b>	<b>303</b>	<b>252</b>	<b>233</b>	<b>266</b>	<b>3,288</b>
County and IAIU CPS Subtotal		CPS	5,221	4,641	5,146	5,198	5,819	4,866	3,938	4,030	4,680	5,721	4,905	4,820	5,357	64,342
County and IAIU CWS Subtotal		CWS	1,740	1,523	1,668	1,550	1,764	1,554	1,253	1,355	1,578	1,942	1,570	1,473	1,792	20,762
Unable to Determine <sup>(1)</sup>		<b>Total</b>	<b>94</b>	<b>407</b>	<b>122</b>	<b>125</b>	<b>169</b>	<b>137</b>	<b>128</b>	<b>122</b>	<b>123</b>	<b>135</b>	<b>117</b>	<b>121</b>	<b>149</b>	<b>1,949</b>
Other Offices		<b>Total</b>	<b>5</b>	<b>6</b>	<b>3</b>	<b>3</b>	<b>4</b>	<b>6</b>	<b>0</b>	<b>3</b>	<b>1</b>	<b>3</b>	<b>1</b>	<b>4</b>	<b>3</b>	<b>42</b>
Grand Total		<b>Total</b>	<b>7,060</b>	<b>6,577</b>	<b>6,939</b>	<b>6,876</b>	<b>7,756</b>	<b>6,563</b>	<b>5,319</b>	<b>5,510</b>	<b>6,382</b>	<b>7,801</b>	<b>6,593</b>	<b>6,418</b>	<b>7,301</b>	<b>87,095</b>

<sup>(1)</sup>CPS Reports or CWS Referrals not assigned to an office through the Assignment Designee, but were assigned to an office for an assessment or investigation.