



Child Protection and Permanency

Monthly Screening and Investigation Report January 2023

Christine Norbut Beyer, MSW
Commissioner



Table of Contents

Table 1: NJ State Central Registry Activity: Monthly Child Abuse and Neglect Hotline Calls, Intakes and Assignments to Child Protection & Permanency (CP&P) Offices

Chart 1: CP&P Annual Trends in Child Protection Services (CPS) Reports and Child Welfare Services (CWS) Referrals

Table 2: Assignments to CP&P Offices: CPS Reports and CWS Referrals

Table 3: Source of CPS Reports and CWS Referrals

Table 4: Monthly Count of CPS Reports and CWS Referrals Assigned to Counties

Table 5: Monthly Count of CPS Reports and CWS Referrals Assigned to CP&P Local Offices

Table 1: NJ State Central Registry Activity: Monthly Child Abuse and Neglect Hotline Calls, Intakes and Assignments to CP&P Offices^{1,2,7}

2022-2023	Hotline Call Activity				Intakes Recorded in NJ SPIRIT ^{6,8}														Assignments to CP&P Offices				
	Total Calls to SCR ³	Abandon Calls ⁴	Average Time to Answer (seconds)	Resulting NJS Intakes ⁵	CPS Reports		CWS Referrals		No Action Required (NAR)		Related Information (RI)		Information & Referral (I&R)		Information Only (IO)		Unusual Incident (UIRS)		CPS Reports		CWS Referrals		Total
					n	%	n	%	n	%	n	%	n	%	n	%	n	%	n	%	n	%	
January 2022	11,733	942	163	11,798	4,274	36.2%	524	4.4%	116	1.0%	2,561	21.7%	2,641	22.4%	1,672	14.2%	10	0.1%	4,274	89.1%	523	10.9%	4,797
February 2022	13,523	1,838	304	12,923	4,867	37.7%	632	4.9%	168	1.3%	2,732	21.1%	2,990	23.1%	1,524	11.8%	10	0.1%	4,867	88.5%	635	11.5%	5,502
March 2022	15,347	1,916	281	14,886	5,781	38.8%	727	4.9%	207	1.4%	2,946	19.8%	3,468	23.3%	1,750	11.8%	7	0.0%	5,780	88.8%	727	11.2%	6,507
April 2022	13,145	2,124	398	12,290	4,669	38.0%	637	5.2%	168	1.4%	2,486	20.2%	2,786	22.7%	1,537	12.5%	7	0.1%	4,669	88.0%	636	12.0%	5,305
May 2022	13,609	1,526	201	13,433	5,228	38.9%	644	4.8%	177	1.3%	2,804	20.9%	2,967	22.1%	1,604	11.9%	9	0.1%	5,228	89.0%	647	11.0%	5,875
June 2022	13,105	1,997	325	12,478	4,854	38.9%	597	4.8%	196	1.6%	2,678	21.5%	2,580	20.7%	1,569	12.6%	4	0.0%	4,854	89.0%	598	11.0%	5,452
July 2022	11,225	1,022	164	11,445	4,277	37.4%	590	5.2%	155	1.4%	2,712	23.7%	1,956	17.1%	1,749	15.3%	6	0.1%	4,277	87.9%	590	12.1%	4,867
August 2022	10,651	841	101	16,623	4,103	24.7%	589	3.5%	164	1.0%	2,465	14.8%	4,070	24.5%	5,202	31.3%	30	0.2%	4,103	87.4%	589	12.6%	4,692
September 2022	12,502	1,199	129	12,828	4,810	37.5%	681	5.3%	178	1.4%	2,818	22.0%	2,724	21.2%	1,614	12.6%	3	0.0%	4,810	87.6%	680	12.4%	5,490
October 2022	13,496	1,226	142	16,804	5,356	31.9%	724	4.3%	178	1.1%	3,153	18.8%	4,212	25.1%	3,160	18.8%	21	0.1%	5,356	88.1%	725	11.9%	6,081
November 2022	12,599	1,217	156	12,974	4,852	37.4%	762	5.9%	189	1.5%	2,998	23.1%	2,658	20.5%	1,509	11.6%	6	0.0%	4,852	86.4%	762	13.6%	5,614
December 2022	11,707	673	88	12,589	4,560	36.2%	730	5.8%	125	1.0%	2,922	23.2%	2,471	19.6%	1,579	12.5%	2	0.0%	4,760	86.7%	731	13.3%	5,491
January 2023	14,498	1,681	188	12,390	5,215	35.8%	962	4.9%	173	1.3%	3,234	20.7%	3,011	22.1%	1,609	15.2%	2	0.1%	5,463	90.3%	962	14.5%	6,425
				13,343	4,834	36.2%	677	5.1%	169	1.3%	2,808	21.0%	2,964	22.2%	2,006	15.0%	9	0.1%	4,834	86.8%	677	12.1%	5,511
Overall Total	12,857	1,400		173,461	62,846		8,799		2,194		36,509		38,534		26,078		117		63,293	87.8%	8,805	12.2%	72,098

¹Comes from three distinct sources: (1) the Automatic Call Distribution (ACD) phone system; which keeps a count of the number of calls and call routing; (2) Monthly NJSpirit Intakes; which record decision making on calls received by hotline screeners, and (3) NJSpirit

²The number of Intakes, CPS Reports, and CWS Referrals are based on an extract from NJSpirit.

Data extracted by the Office of Research, Evaluation, and Reporting on **February 09, 2023** includes all Intakes, CPS Reports, and CWS Referrals received from **January 01, 2023** through **January 31, 2023**.

³The number calls received through the ACD System that were directed to a screener from any call-in phone number.

⁴The number of calls received through the ACD System that are abandoned either while waiting in queue or while ringing.

⁵The number of Intakes entered in NJSpirit from the number of calls received.

⁶The number of Intakes recorded in NJSpirit, by type of Intake. There is not a one-to-one relationship between an ACD call and an Intake; multiple calls to State Central Registry (SCR) may result in a single Intake, or one call may result in multiple Intakes.

⁷Intake: The process of documenting: a report of alleged abuse or neglect of a child (CPS); a request for services on behalf of a child, or a referral of a child for services (CWS); a call in which the caller provides additional or clarifying information about a current service

CP&P Annual Trends in CPS Reports and CWS Referrals

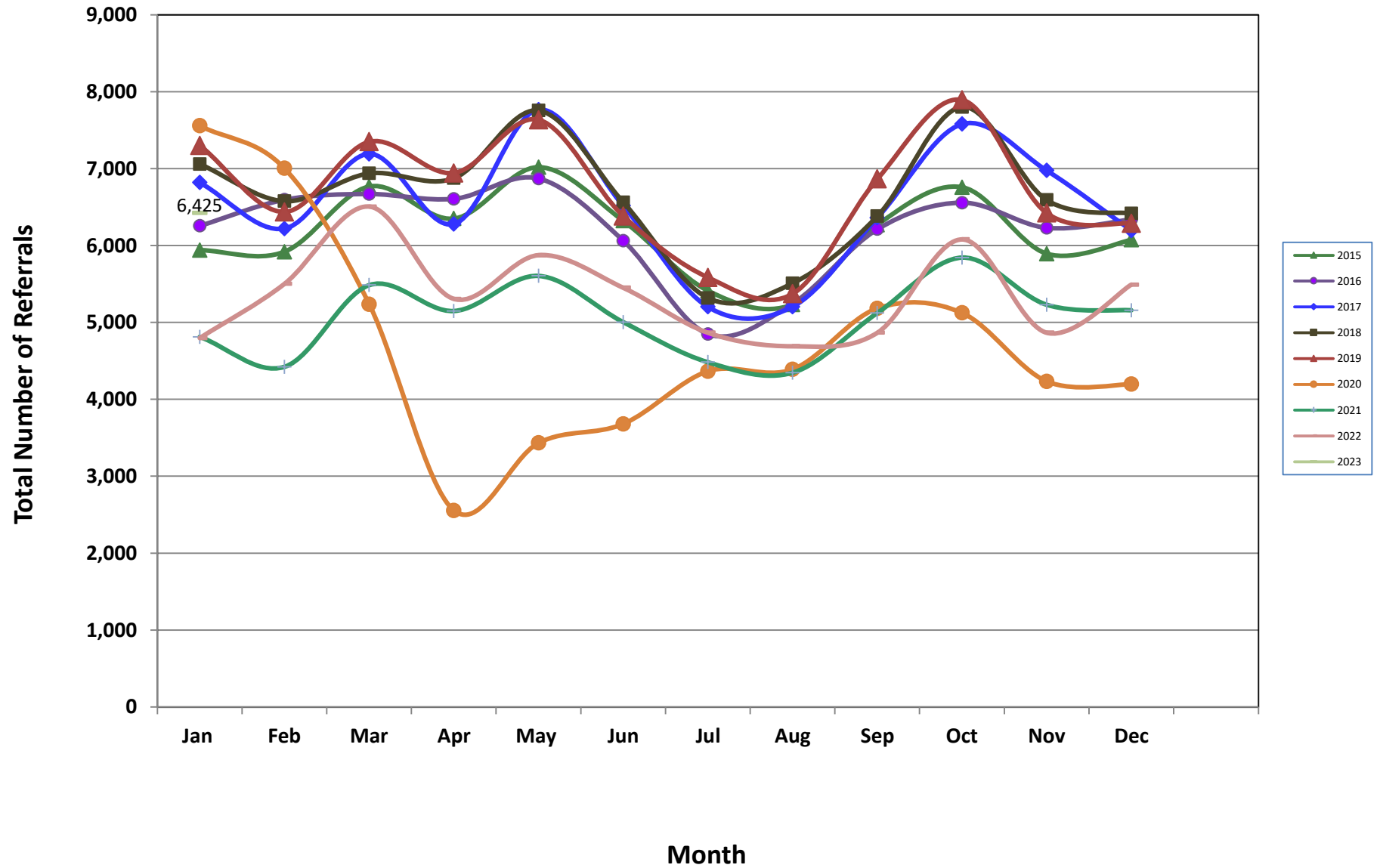


Table 2: Assignments to CP&P Offices: CPS Reports and CWS Referrals¹

Intake Date ³		CPS Reports ²	CWS Referrals ²	Total Assignments ²
2018	Jan 2018	5,276	1,784	7,060
	Feb 2018	4,933	1,644	6,577
	Mar 2018	5,212	1,727	6,939
	Apr 2018	5,275	1,601	6,876
	May 2018	5,920	1,836	7,756
	Jun 2018	4,948	1,615	6,563
	Jul 2018	4,011	1,308	5,319
	Aug 2018	4,102	1,408	5,510
	Sep 2018	4,748	1,634	6,382
	Oct 2018	5,790	2,011	7,801
	Nov 2018	4,973	1,620	6,593
	Dec 2018	4,891	1,527	6,418
	Total	60,079	19,715	79,794
2019	Jan 2019	5,443	1,858	7,301
	Feb 2019	4,811	1,628	6,439
	Mar 2019	5,677	1,824	7,501
	Apr 2019	5,313	1,630	6,943
	May 2019	5,853	1,781	7,634
	Jun 2019	4,874	1,509	6,383
	Jul 2019	4,277	1,309	5,586
	Aug 2019	4,068	1,306	5,374
	Sep 2019	5,315	1,551	6,866
	Oct 2019	5,968	1,926	7,894
	Nov 2019	4,991	1,432	6,423
	Dec 2019	4,855	1,434	6,289
	Total	61,445	19,188	80,633
2020	Jan 2020	5,715	1,842	7,557
	Feb 2020	5,380	1,624	7,004
	Mar 2020	4,172	1,065	5,237
	Apr 2020	2,149	407	2,556
	May 2020	2,897	537	3,434
	Jun 2020	3,045	636	3,681
	Jul 2020	3,628	738	4,366
	Aug 2020	3,569	822	4,391
	Sep 2020	4,153	1,030	5,183
	Oct 2020	4,257	868	5,125
	Nov 2020	3,564	670	4,234
	Dec 2020	3,517	681	4,198
	Total	46,046	10,920	56,966

Table 2: Assignments to CP&P Offices: CPS Reports and CWS Referrals¹

Intake Date ³		CPS Reports ²	CWS Referrals ²	Total Assignments ²
2021	Jan 2021	4,018	794	4,812
	Feb 2021	3,767	655	4,422
	Mar 2021	4,657	830	5,487
	Apr 2021	4,398	750	5,148
	May 2021	4,870	736	5,606
	Jun 2021	4,412	592	5,004
	Jul 2021	3,914	570	4,484
	Aug 2021	3,866	482	4,348
	Sep 2021	4,559	564	5,123
	Oct 2021	5,213	630	5,843
	Nov 2021	4,689	541	5,230
	Dec 2021	4,601	557	5,158
	Total	52,964	7,701	60,665
	2022	Jan 2022	4,274	523
Feb 2022		4,867	635	5,502
Mar 2022		5,780	727	6,507
Apr 2022		4,669	636	5,305
May 2022		5,228	647	5,875
Jun 2022		4,854	598	5,452
Jul 2022		4,277	590	4,867
Aug 2022		4,103	589	4,692
Sep 2022		4,810	680	5,490
Oct 2022		5,356	725	6,081
Nov 2022		4,852	762	5,614
Dec 2022		4,760	731	5,491
Total		57,830	7,843	65,673
2023	Jan 2023	5,463	962	6,425
Grand Total		278,364	65,367	343,731

¹Source of Data: NJ SPIRIT

²A CPS Report or a CWS Referral may include multiple children in a family, with one or more allegation or request for services. In these cases, each CPS Report or CWS Referral is counted once - the CPS Report or the CWS Referral is the unit of analysis rather than the child.

³Prior to January 2014, the number of CPS Reports and CWS Referrals was based on the type of assignment of the CPS Report or CWS Referral. Beginning in January 2014, the number of CPS Reports and CWS Referrals is based on the number of CPS Reports and CWS Referrals received.

Table 3: Source of CPS Reports and CWS Referrals

	Source	Jan 2022	Feb 2022	Mar 2022	Apr 2022	May 2022	Jun 2022	Jul 2022	Aug 2022	Sep 2022	Oct 2022	Nov 2022	Dec 2022	Jan 2023		13 Month Total	
CPS Reports and CWS Referrals	School Staff	983	1,549	1,998	1,227	1,456	929	162	91	1,130	1,602	1,394	1,302	1,809	28%	13,823	21%
	Healthcare Provider	746	750	895	728	763	786	787	777	747	843	825	836	843	13%	9,483	14%
	Law Enforcement	1,238	1,234	1,478	1,373	1,513	1,549	1,624	1,617	1,421	1,514	1,422	1,416	1,525	24%	17,399	26%
	Government Agency	212	253	261	261	233	262	276	260	243	258	240	231	298	5%	2,990	5%
	Parent	347	349	380	333	383	399	420	413	421	426	342	383	419	7%	4,596	7%
	Relative/Friend/Neighbor	337	275	298	301	344	318	380	346	337	296	313	291	304	5%	3,836	6%
	Anonymous	366	461	471	410	527	493	437	458	502	480	458	416	489	8%	5,479	8%
	CP&P	54	56	75	62	42	53	53	46	57	49	45	42	58	1%	634	1%
	Court/Legal	100	108	144	140	116	136	144	147	139	135	113	122	135	2%	1,544	2%
	Community Group/Individual	158	183	198	176	201	205	235	211	180	158	165	163	217	3%	2,233	3%
	Facility Staff (incl Correctional Facility)	54	56	55	59	62	59	59	52	35	44	45	43	50	1%	623	1%
	Child (Self)	29	29	25	25	18	28	30	34	33	21	25	24	42	1%	321	0%
	Other	160	183	209	188	194	222	241	216	224	233	199	208	210	3%	2,477	4%
	Daycare/Babysitter	13	16	20	22	23	13	19	24	21	22	28	14	26	0%	235	0%
Total		4,797	5,502	6,507	5,305	5,875	5,452	4,867	4,692	5,490	6,081	5,614	5,491	6,425		65,673	

Table 4: Monthly Count of CPS Reports and CWS Referrals Assigned to Counties

County														Average Number of Assignments Last 13 Months	Jan 22 to Jan 23 Numerical Difference
	Jan 2022	Feb 2022	Mar 2022	Apr 2022	May 2022	Jun 2022	Jul 2022	Aug 2022	Sep 2022	Oct 2022	Nov 2022	Dec 2022	Jan 2023		
Atlantic	189	245	268	222	250	233	197	217	236	256	197	243	281	233	38
Bergen	290	354	425	348	327	349	305	276	315	356	350	344	407	342	63
Burlington	264	283	359	255	300	292	284	240	305	314	332	288	335	296	47
Camden	404	449	542	458	474	422	385	415	511	499	472	461	486	460	25
Cape May	62	59	74	62	68	69	76	78	80	81	69	63	74	70	11
Cumberland	149	160	202	166	206	182	180	166	174	195	183	185	215	182	30
Essex	456	550	647	532	581	517	477	497	528	590	562	547	636	548	89
Gloucester	216	195	257	217	218	206	211	190	222	221	248	235	264	223	29
Hudson	341	392	415	324	409	327	323	242	356	352	342	370	408	354	38
Hunterdon	40	33	55	46	38	56	29	32	52	54	49	39	53	44	14
Mercer	189	229	263	217	258	229	239	232	236	294	240	227	245	238	18
Middlesex	356	464	520	388	432	404	283	308	409	436	422	406	504	410	98
Monmouth	260	288	342	297	332	286	236	266	289	317	317	277	323	295	46
Morris	193	193	213	180	216	205	165	171	190	230	179	195	239	198	44
Ocean	304	305	370	332	372	375	340	320	356	391	352	341	382	349	41
Passaic	274	354	415	347	385	350	295	264	323	396	326	348	420	346	72
Salem	65	74	84	55	81	53	62	67	70	60	64	73	83	69	10
Somerset	112	141	165	107	142	132	113	92	130	174	137	133	171	135	38
Sussex	84	100	107	95	95	95	73	69	87	114	103	85	115	94	30
Union	257	290	363	317	332	310	281	259	265	353	301	293	346	305	53
Warren	86	83	121	79	86	85	73	78	100	91	80	81	108	89	27
County Subtotals	4,591	5,241	6,207	5,044	5,602	5,177	4,627	4,479	5,234	5,774	5,325	5,234	6,095	5,279	861
Central Region IAIU	32	43	54	35	60	32	38	35	47	50	56	47	53	45	6
Metro Region IAIU	27	36	35	35	41	41	22	23	34	54	33	25	45	35	20
Northern Region IAIU	28	40	50	38	52	40	32	33	42	50	50	56	58	44	2
Southern Region IAIU	35	46	59	46	48	56	56	27	50	69	50	53	81	52	28
IAIU Subtotals	122	165	198	154	201	169	148	118	173	223	189	181	237	175	56
¹ Unable to Determine	84	92	102	107	72	103	90	93	80	84	99	75	91	90	16
Other Offices	0	4	0	0	0	3	2	2	3	0	1	1	2	1	1
Grand Total	4,797	5,502	6,507	5,305	5,875	5,452	4,867	4,692	5,490	6,081	5,614	5,491	6,425	5,546	934

¹CPS Reports or CWS Referrals not assigned to an office through the Assignment Designee, but were assigned to an office for an assessment or investigation.



Table 5: Monthly Count of CPS Reports and CWS Referrals Assigned to CP&P Local Offices

County	Local Office	Type of Referral														Total
			Jan 2022	Feb 2022	Mar 2022	Apr 2022	May 2022	Jun 2022	Jul 2022	Aug 2022	Sep 2022	Oct 2022	Nov 2022	Dec 2022	Jan 2023	
ATLANTIC	Atlantic East	CPS	114	124	128	106	116	117	88	100	106	106	90	111	114	1,420
		CWS	9	13	21	26	15	19	21	22	15	15	20	20	28	244
		Total	123	137	149	132	131	136	109	122	121	121	110	131	142	1,664
	Atlantic West	CPS	58	90	103	81	107	85	74	84	107	113	75	92	112	1,181
		CWS	8	18	16	9	12	12	14	11	8	22	12	20	27	189
		Total	66	108	119	90	119	97	88	95	115	135	87	112	139	1,370
	County Totals	CPS	172	214	231	187	223	202	162	184	213	219	165	203	226	2,601
		CWS	17	31	37	35	27	31	35	33	23	37	32	40	55	433
		Total	189	245	268	222	250	233	197	217	236	256	197	243	281	3,034
BERGEN	Bergen Central	CPS	111	152	169	119	119	142	108	82	117	137	145	126	143	1,670
		CWS	13	17	17	18	13	7	14	27	17	19	21	25	20	228
		Total	124	169	186	137	132	149	122	109	134	156	166	151	163	1,898
	Bergen South	CPS	148	170	217	188	179	176	160	142	156	176	159	168	214	2,253
		CWS	18	15	22	23	16	24	23	25	25	24	25	25	30	295
		Total	166	185	239	211	195	200	183	167	181	200	184	193	244	2,548
	County Totals	CPS	259	322	386	307	298	318	268	224	273	313	304	294	357	3,923
		CWS	31	32	39	41	29	31	37	52	42	43	46	50	50	523
		Total	290	354	425	348	327	349	305	276	315	356	350	344	407	4,446
BURLINGTON	Burlington East	CPS	119	121	162	103	134	133	115	96	130	136	133	117	146	1,645
		CWS	16	11	17	17	15	21	16	22	26	19	20	25	32	257
		Total	135	132	179	120	149	154	131	118	156	155	153	142	178	1,902
	Burlington West	CPS	119	127	156	118	129	123	134	106	125	132	154	122	128	1,673
		CWS	10	24	24	17	22	15	19	16	24	27	25	24	29	276
		Total	129	151	180	135	151	138	153	122	149	159	179	146	157	1,949
	County Totals	CPS	238	248	318	221	263	256	249	202	255	268	287	239	274	3,318
		CWS	26	35	41	34	37	36	35	38	50	46	45	49	61	533
		Total	264	283	359	255	300	292	284	240	305	314	332	288	335	3,851
CAMDEN	Camden Central	CPS	91	104	111	95	112	99	95	112	124	136	97	97	116	1,389
		CWS	16	16	7	9	17	21	13	20	22	20	15	21	18	215
		Total	107	120	118	104	129	120	108	132	146	156	112	118	134	1,604
	Camden East	CPS	84	95	106	107	94	98	84	68	111	93	121	96	110	1,267
		CWS	22	11	20	15	16	20	8	9	17	20	16	15	12	201
		Total	106	106	126	122	110	118	92	77	128	113	137	111	122	1,468
	Camden North	CPS	89	103	135	98	85	71	73	86	110	109	87	101	89	1,236
		CWS	9	16	22	22	21	12	18	14	12	16	32	20	19	233
		Total	98	119	157	120	106	83	91	100	122	125	119	121	108	1,469
	Camden South	CPS	83	95	117	101	122	88	81	92	102	93	86	92	103	1,255
		CWS	10	9	24	11	7	13	13	14	13	12	18	19	19	182
		Total	93	104	141	112	129	101	94	106	115	105	104	111	122	1,437
	County Totals	CPS	347	397	469	401	413	356	333	358	447	431	391	386	418	5,147
		CWS	57	52	73	57	61	66	52	57	64	68	81	75	68	831
		Total	404	449	542	458	474	422	385	415	511	499	472	461	486	5,978
CAPE MAY	Cape May	CPS	56	52	63	56	58	61	68	66	67	71	63	55	66	802
		CWS	6	7	11	6	10	8	8	12	13	10	6	8	8	113
		Total	62	59	74	62	68	69	76	78	80	81	69	63	74	915
	County Totals	CPS	56	52	63	56	58	61	68	66	67	71	63	55	66	802
		CWS	6	7	11	6	10	8	8	12	13	10	6	8	8	113
		Total	62	59	74	62	68	69	76	78	80	81	69	63	74	915
CUMBERLAND	Cumberland East	CPS	56	54	74	59	65	65	62	66	56	82	78	61	87	865
		CWS	11	14	10	4	12	11	10	12	13	5	3	13	17	135
		Total	67	68	84	63	77	76	72	78	69	87	81	74	104	1,000
	Cumberland West	CPS	67	81	109	90	115	94	92	78	93	91	95	98	99	1,202
		CWS	15	11	9	13	14	12	16	10	12	17	7	13	12	161
		Total	82	92	118	103	129	106	108	88	105	108	102	111	111	1,363
	County Totals	CPS	123	135	183	149	180	159	154	144	149	173	173	159	186	2,067
		CWS	26	25	19	17	26	23	26	22	25	22	10	26	29	296
		Total	149	160	202	166	206	182	180	166	174	195	183	185	215	2,363



Table 5: Monthly Count of CPS Reports and CWS Referrals Assigned to CP&P Local Offices

County	Local Office	Type of Referral	Jan 2022	Feb 2022	Mar 2022	Apr 2022	May 2022	Jun 2022	Jul 2022	Aug 2022	Sep 2022	Oct 2022	Nov 2022	Dec 2022	Jan 2023	Total
ESSEX	Essex Central	CPS	57	69	78	89	83	77	73	79	85	89	70	73	69	991
		CWS	6	13	10	14	10	9	8	9	10	12	19	16	13	149
		Total	63	82	88	103	93	86	81	88	95	101	89	89	82	1,140
	Essex North	CPS	81	88	115	82	91	90	71	60	86	92	85	104	101	1,146
		CWS	13	10	6	7	11	6	13	5	8	16	13	15	18	141
		Total	94	98	121	89	102	96	84	65	94	108	98	119	119	1,287
	Essex South	CPS	65	89	123	82	106	86	77	83	66	90	87	93	99	1146
		CWS	8	11	15	10	17	9	12	9	11	19	12	7	23	163
		Total	73	100	138	92	123	95	89	92	77	109	99	100	122	1309
	Newark Center City	CPS	79	71	90	75	88	67	65	73	74	93	77	69	77	998
		CWS	2	8	9	9	9	10	9	10	8	14	13	12	13	126
		Total	81	79	99	84	97	77	74	83	82	107	90	81	90	1124
	Newark Northeast	CPS	68	91	94	83	72	63	61	74	79	77	82	68	90	1002
		CWS	8	13	14	5	6	7	10	11	14	8	16	14	23	149
		Total	76	104	108	88	78	70	71	85	93	85	98	82	113	1151
	Newark South	CPS	55	79	88	65	76	80	68	75	73	74	76	68	93	970
		CWS	14	8	5	11	12	13	10	9	14	6	12	8	17	139
		Total	69	87	93	76	88	93	78	84	87	80	88	76	110	1109
County Totals	CPS	405	487	588	476	516	463	415	444	463	515	477	475	529	6253	
	CWS	51	63	59	56	65	54	62	53	65	75	85	72	107	867	
	Total	456	550	647	532	581	517	477	497	528	590	562	547	636	7120	
GLOUCESTER	Gloucester East	CPS	86	84	107	79	88	81	90	78	74	75	100	97	102	1141
		CWS	14	12	16	18	9	13	13	11	15	10	14	21	16	182
		Total	100	96	123	97	97	94	103	89	89	85	114	118	118	1323
	Gloucester West	CPS	103	91	123	103	109	98	101	85	110	114	114	99	125	1375
		CWS	13	8	11	17	12	14	7	16	23	22	20	18	21	202
Total		116	99	134	120	121	112	108	101	133	136	134	117	146	1577	
County Totals	CPS	189	175	230	182	197	179	191	163	184	189	214	196	227	2516	
	CWS	27	20	27	35	21	27	20	27	38	32	34	39	37	384	
	Total	216	195	257	217	218	206	211	190	222	221	248	235	264	2900	
HUDSON	Hudson Central	CPS	78	93	99	74	131	82	90	75	93	82	89	85	95	1166
		CWS	9	18	17	11	10	14	10	9	11	15	20	19	13	176
		Total	87	111	116	85	141	96	100	84	104	97	109	104	108	1342
	Hudson North	CPS	90	98	108	65	74	70	69	48	86	88	69	80	86	1031
		CWS	5	12	10	10	10	6	9	6	15	5	9	7	20	124
		Total	95	110	118	75	84	76	78	54	101	93	78	87	106	1155
	Hudson South	CPS	62	69	74	63	80	74	61	40	70	59	53	70	80	855
		CWS	12	8	4	10	14	8	10	8	7	14	12	10	16	133
		Total	74	77	78	73	94	82	71	48	77	73	65	80	96	988
	Hudson West	CPS	76	87	90	84	84	66	67	47	65	80	76	82	80	984
		CWS	9	7	13	7	6	7	7	9	9	9	14	17	18	132
		Total	85	94	103	91	90	73	74	56	74	89	90	99	98	1116
County Totals	CPS	306	347	371	286	369	292	287	210	314	309	287	317	341	4036	
	CWS	35	45	44	38	40	35	36	32	42	43	55	53	67	565	
	Total	341	392	415	324	409	327	323	242	356	352	342	370	408	4601	
HUNTERDON	Hunterdon	CPS	36	30	50	39	34	50	25	27	49	50	40	35	46	511
		CWS	4	3	5	7	4	6	4	5	3	4	9	4	7	65
		Total	40	33	55	46	38	56	29	32	52	54	49	39	53	576
	County Totals	CPS	36	30	50	39	34	50	25	27	49	50	40	35	46	511
CWS		4	3	5	7	4	6	4	5	3	4	9	4	7	65	
Total		40	33	55	46	38	56	29	32	52	54	49	39	53	576	
MERCER	Mercer North	CPS	87	99	129	91	131	111	103	103	122	130	108	106	101	1421
		CWS	13	16	14	18	12	15	19	14	10	11	23	17	15	197
		Total	100	115	143	109	143	126	122	117	132	141	131	123	116	1618
	Mercer South	CPS	76	107	106	100	96	93	104	99	90	129	98	96	106	1300
		CWS	13	7	14	8	19	10	13	16	14	24	11	8	23	180
		Total	89	114	120	108	115	103	117	115	104	153	109	104	129	1480
	County Totals	CPS	163	206	235	191	227	204	207	202	212	259	206	202	207	2721
CWS		26	23	28	26	31	25	32	30	24	35	34	25	38	377	
Total		189	229	263	217	258	229	239	232	236	294	240	227	245	3098	

Data in this report is preliminary and may differ from any final report. This report is produced to ensure continuous quality improvement throughout DCF.

Table 5: Monthly Count of CPS Reports and CWS Referrals Assigned to CP&P Local Offices

County	Local Office	Type of Referral														Total
			Jan 2022	Feb 2022	Mar 2022	Apr 2022	May 2022	Jun 2022	Jul 2022	Aug 2022	Sep 2022	Oct 2022	Nov 2022	Dec 2022	Jan 2023	
MIDDLESEX	Middlesex Central	CPS	114	125	129	126	107	117	64	79	100	109	91	102	119	1382
		CWS	5	19	18	12	14	12	7	2	17	21	15	11	20	173
		Total	119	144	147	138	121	129	71	81	117	130	106	113	139	1555
	Middlesex Coastal	CPS	113	138	173	124	137	127	106	116	137	139	153	139	167	1769
		CWS	6	10	8	12	13	13	14	12	19	14	16	13	30	180
		Total	119	148	181	136	150	140	120	128	156	153	169	152	197	1949
	Middlesex West	CPS	109	153	171	100	147	121	83	89	114	135	131	120	136	1609
		CWS	9	19	21	14	14	14	9	10	22	18	16	21	32	219
		Total	118	172	192	114	161	135	92	99	136	153	147	141	168	1828
	County Totals	CPS	336	416	473	350	391	365	253	284	351	383	375	361	422	4760
		CWS	20	48	47	38	41	39	30	24	58	53	47	45	82	572
Total		356	464	520	388	432	404	283	308	409	436	422	406	504	5332	
MONMOUTH	Monmouth North	CPS	132	145	186	157	172	134	123	123	142	187	158	143	154	1956
		CWS	11	12	14	16	22	5	13	23	11	15	24	17	26	209
		Total	143	157	200	173	194	139	136	146	153	202	182	160	180	2165
	Monmouth South	CPS	100	114	130	110	126	136	88	110	112	106	119	102	113	1466
		CWS	17	17	12	14	12	11	12	10	24	9	16	15	30	199
		Total	117	131	142	124	138	147	100	120	136	115	135	117	143	1665
	County Totals	CPS	232	259	316	267	298	270	211	233	254	293	277	245	267	3422
		CWS	28	29	26	30	34	16	25	33	35	24	40	32	56	408
		Total	260	288	342	297	332	286	236	266	289	317	317	277	323	3830
MORRIS	Morris East	CPS	75	101	89	72	85	85	67	70	82	99	88	83	92	1088
		CWS	11	5	8	11	7	12	9	7	5	10	13	13	17	128
		Total	86	106	97	83	92	97	76	77	87	109	101	96	109	1216
	Morris West	CPS	99	78	101	82	112	99	82	84	95	102	68	89	111	1202
		CWS	8	9	15	15	12	9	7	10	8	19	10	10	19	151
		Total	107	87	116	97	124	108	89	94	103	121	78	99	130	1353
	County Totals	CPS	174	179	190	154	197	184	149	154	177	201	156	172	203	2290
		CWS	19	14	23	26	19	21	16	17	13	29	23	23	36	279
		Total	193	193	213	180	216	205	165	171	190	230	179	195	239	2569
OCEAN	Ocean North	CPS	154	151	158	171	172	172	161	139	163	190	161	165	156	2113
		CWS	18	22	24	16	23	18	13	18	17	21	28	15	33	266
		Total	172	173	182	187	195	190	174	157	180	211	189	180	189	2379
	Ocean South	CPS	123	116	168	128	153	173	145	147	163	163	148	141	170	1938
		CWS	9	16	20	17	24	12	21	16	13	17	15	20	23	223
		Total	132	132	188	145	177	185	166	163	176	180	163	161	193	2161
	County Totals	CPS	277	267	326	299	325	345	306	286	326	353	309	306	326	4051
		CWS	27	38	44	33	47	30	34	34	30	38	43	35	56	489
		Total	304	305	370	332	372	375	340	320	356	391	352	341	382	4540
PASSAIC	Passaic Central	CPS	144	165	187	140	177	164	127	115	157	161	140	148	165	1990
		CWS	15	29	24	25	18	14	5	10	21	24	25	25	26	261
		Total	159	194	211	165	195	178	132	125	178	185	165	173	191	2251
	Passaic North	CPS	104	136	182	154	166	157	143	124	126	187	135	157	192	1963
		CWS	11	24	22	28	24	15	20	15	19	24	26	18	37	283
		Total	115	160	204	182	190	172	163	139	145	211	161	175	229	2246
	County Totals	CPS	248	301	369	294	343	321	270	239	283	348	275	305	357	3953
		CWS	26	53	46	53	42	29	25	25	40	48	51	43	63	544
		Total	274	354	415	347	385	350	295	264	323	396	326	348	420	4497
SALEM	Salem	CPS	58	59	70	48	72	46	51	62	61	53	56	67	68	771
		CWS	7	15	14	7	9	7	11	5	9	7	8	6	15	120
		Total	65	74	84	55	81	53	62	67	70	60	64	73	83	891
	County Totals	CPS	58	59	70	48	72	46	51	62	61	53	56	67	68	771
		CWS	7	15	14	7	9	7	11	5	9	7	8	6	15	120
Total	65	74	84	55	81	53	62	67	70	60	64	73	83	891		
SOMERSET	Somerset	CPS	103	132	149	103	132	119	102	81	116	152	124	123	150	1586
		CWS	9	9	16	4	10	13	11	11	14	22	13	10	21	163
		Total	112	141	165	107	142	132	113	92	130	174	137	133	171	1749
	County Totals	CPS	103	132	149	103	132	119	102	81	116	152	124	123	150	1586
		CWS	9	9	16	4	10	13	11	11	14	22	13	10	21	163
Total	112	141	165	107	142	132	113	92	130	174	137	133	171	1749		



Table 5: Monthly Count of CPS Reports and CWS Referrals Assigned to CP&P Local Offices

County	Local Office	Type of Referral														Total	
			Jan 2022	Feb 2022	Mar 2022	Apr 2022	May 2022	Jun 2022	Jul 2022	Aug 2022	Sep 2022	Oct 2022	Nov 2022	Dec 2022	Jan 2023		
SUSSEX	Sussex	CPS	77	89	98	84	85	77	65	64	78	100	89	75	97	1078	
		CWS	7	11	9	11	10	18	8	5	9	14	14	10	18	144	
		Total	84	100	107	95	95	95	73	69	87	114	103	85	115	1222	
	County Totals	CPS	77	89	98	84	85	77	65	64	78	100	89	75	97	1078	
		CWS	7	11	9	11	10	18	8	5	9	14	14	10	18	144	
		Total	84	100	107	95	95	95	73	69	87	114	103	85	115	1222	
UNION	Union Central	CPS	56	78	95	90	88	97	88	74	72	118	89	88	107	1140	
		CWS	10	8	16	4	15	10	10	9	8	11	12	13	19	145	
		Total	66	86	111	94	103	107	98	83	80	129	101	101	126	1285	
	Union East	CPS	108	75	104	98	96	88	90	78	69	95	80	66	95	1142	
		CWS	8	9	14	10	13	19	11	13	14	10	12	7	12	152	
		Total	116	84	118	108	109	107	101	91	83	105	92	73	107	1294	
	Union West	CPS	67	108	115	98	105	89	71	76	87	105	90	96	103	1210	
		CWS	8	12	19	17	15	7	11	9	15	14	18	23	10	178	
		Total	75	120	134	115	120	96	82	85	102	119	108	119	113	1388	
	County Totals	CPS	231	261	314	286	289	274	249	228	228	318	259	250	305	3492	
		CWS	26	29	49	31	43	36	32	31	37	35	42	43	41	475	
		Total	257	290	363	317	332	310	281	259	265	353	301	293	346	3967	
	WARREN	Warren	CPS	77	77	103	71	77	78	70	68	88	86	72	69	93	1029
			CWS	9	6	18	8	9	7	3	10	12	5	8	12	15	122
			Total	86	83	121	79	86	85	73	78	100	91	80	81	108	1151
County Totals		CPS	77	77	103	71	77	78	70	68	88	86	72	69	93	1029	
		CWS	9	6	18	8	9	7	3	10	12	5	8	12	15	122	
		Total	86	83	121	79	86	85	73	78	100	91	80	81	108	1151	
County CPS Referral Total		CPS	4,107	4,653	5,532	4,451	4,987	4,619	4,085	3,923	4,588	5,084	4,599	4,534	5,165	60,327	
County CWS Referral Total		CWS	484	588	675	593	615	558	542	556	646	690	726	700	930	8,303	
County Referral Total		Total	4,591	5,241	6,207	5,044	5,602	5,177	4,627	4,479	5,234	5,774	5,325	5,234	6,095	68,630	
Central Region IAIU	CPS	32	43	54	35	60	32	38	35	47	50	56	47	53	582		
	CWS	0	0	0	0	0	0	0	0	0	0	0	0	0	0		
	Total	32	43	54	35	60	32	38	35	47	50	56	47	53	582		
Metro Region IAIU	CPS	27	36	35	35	41	41	22	23	34	54	33	25	45	451		
	CWS	0	0	0	0	0	0	0	0	0	0	0	0	0	0		
	Total	27	36	35	35	41	41	22	23	34	54	33	25	45	451		
Northern Region IAIU	CPS	28	40	50	38	52	40	32	33	42	50	50	56	58	569		
	CWS	0	0	0	0	0	0	0	0	0	0	0	0	0	0		
	Total	28	40	50	38	52	40	32	33	42	50	50	56	58	569		
Southern Region IAIU	CPS	35	46	59	46	48	56	56	27	50	69	50	53	81	676		
	CWS	0	0	0	0	0	0	0	0	0	0	0	0	0	0		
	Total	35	46	59	46	48	56	56	27	50	69	50	53	81	676		
IAIU CPS Subtotal		CPS	122	165	198	154	201	169	148	118	173	223	189	181	237	2,278	
IAIU CWS Subtotal		CWS	0	0	0	0	0	0	0	0	0	0	0	0	0		
IAIU Subtotal		Total	122	165	198	154	201	169	148	118	173	223	189	181	237	2,278	
County and IAIU CPS Subtotal		CPS	4,229	4,818	5,730	4,605	5,188	4,788	4,233	4,041	4,761	5,307	4,788	4,715	5,402	62,605	
County and IAIU CWS Subtotal		CWS	484	588	675	593	615	558	542	556	646	690	726	700	930	8,303	
Unable to Determine(1)		Total	84	92	102	107	72	103	90	93	80	84	99	75	91	1,172	
Other Offices		Total	0	4	0	0	0	3	2	2	3	0	1	1	2	18	
Grand Total		Total	4,797	5,502	6,507	5,305	5,875	5,452	4,867	4,692	5,490	6,081	5,614	5,491	6,425	72,098	

(1) CPS Reports or CWS Referrals not assigned to an office through the Assignment Designee, but were assigned to an office for an assessment or investigation.