



Child Protection and Permanency

Monthly Screening and Investigation Report October 2018

Christine Norbut Beyer, MSW
Commissioner

November 9, 2018



Table of Contents

Table 1: NJ State Central Registry Activity: Monthly Child Abuse and Neglect Hotline Calls, Intakes and Assignments to Child Protection & Permanency (CP&P) Offices

Chart 1: CP&P Annual Trends in Child Protection Services (CPS) Reports and Child Welfare Services (CWS) Referrals

Table 2: Assignments to CP&P Offices: CPS Reports and CWS Referrals

Table 3: Source of CPS Reports and CWS Referrals

Table 4: Monthly Count of CPS Reports and CWS Referrals Assigned to Counties

Table 5: Monthly Count of CPS Reports and CWS Referrals Assigned to CP&P Local Offices

Table 1: NJ State Central Registry Activity: Monthly Child Abuse and Neglect Hotline Calls, Intakes and Assignments to CP&P Offices^{1,2,7}

2017 - 2018	Hotline Call Activity				Intakes Recorded in NJ SPIRIT ^{6,8}												Assignments to CP&P Offices				
	Total Calls to SCR ³	Abandon Calls ⁴	Average Time to Answer (seconds)	Resulting NJS Intakes ⁵	CPS Reports		CWS Referrals		No Action Required (NAR)		Related Information (RI)		Information & Referral (I&R)		Information Only (IO)		CPS Reports		CWS Referrals		Total
					n	%	n	%	n	%	n	%	n	%	n	%	n	%	n	%	
October 2017	15,474	657	45	16,828	5,613	33.4%	1,968	11.7%	305	1.8%	4,353	25.9%	1,883	11.2%	2,706	16.1%	5,613	74.1%	1,966	25.9%	7,579
November 2017	14,446	672	43	15,694	5,223	33.3%	1,750	11.2%	235	1.5%	4,246	27.1%	1,680	10.7%	2,560	16.3%	5,223	74.9%	1,753	25.1%	6,976
December 2017	13,005	560	38	14,194	4,601	32.4%	1,594	11.2%	220	1.5%	3,843	27.1%	1,724	12.1%	2,212	15.6%	4,601	74.3%	1,594	25.7%	6,195
January 2018	14,876	952	60	15,833	5,276	33.3%	1,784	11.3%	242	1.5%	4,346	27.4%	1,755	11.1%	2,430	15.3%	5,276	74.7%	1,784	25.3%	7,060
February 2018	13,558	727	54	14,638	4,933	33.7%	1,643	11.2%	251	1.7%	3,807	26.0%	1,740	11.9%	2,264	15.5%	4,933	75.0%	1,644	25.0%	6,577
March 2018	14,714	804	55	15,869	5,212	32.8%	1,727	10.9%	288	1.8%	4,187	26.4%	1,855	11.7%	2,600	16.4%	5,212	75.1%	1,727	24.9%	6,939
April 2018	14,148	727	54	15,227	5,275	34.6%	1,603	10.5%	252	1.7%	3,952	26.0%	1,818	11.9%	2,327	15.3%	5,275	76.7%	1,601	23.3%	6,876
May 2018	15,956	1,482	69	16,668	5,920	35.5%	1,833	11.0%	316	1.9%	4,104	24.6%	1,997	12.0%	2,498	15.0%	5,920	76.3%	1,836	23.7%	7,756
June 2018	13,796	1,021	72	14,490	4,948	34.1%	1,614	11.1%	264	1.8%	3,662	25.3%	1,693	11.7%	2,309	15.9%	4,948	75.4%	1,615	24.6%	6,563
July 2018	11,406	407	35	12,497	4,011	32.1%	1,307	10.5%	214	1.7%	3,387	27.1%	1,374	11.0%	2,204	17.6%	4,011	75.4%	1,308	24.6%	5,319
August 2018	11,633	460	43	12,708	4,102	32.3%	1,409	11.1%	252	2.0%	3,455	27.2%	1,307	10.3%	2,183	17.2%	4,102	74.4%	1,408	25.6%	5,510
September 2018	13,554	925	64	14,277	4,748	33.3%	1,632	11.4%	217	1.5%	3,914	27.4%	1,448	10.1%	2,318	16.2%	4,748	74.4%	1,634	25.6%	6,382
October 2018	15,489	904	68	16,470	5,790	35.2%	2,008	12.2%	260	1.6%	4,103	24.9%	1,827	11.1%	2,482	15.1%	5,790	74.2%	2,011	25.8%	7,801
	14,004	792	54	15,030	5,050	33.6%	1,682	11.2%	255	1.7%	3,951	26.3%	1,700	11.3%	2,392	15.9%	5,050	75.0%	1,683	25.0%	6,733
Overall Total	182,055	10,298		195,393	65,652		21,872		3,316		51,359		22,101		31,093		65,652	75.0%	21,881	25.0%	87,533

¹Comes from three distinct sources: (1) the Automatic Call Distribution (ACD) phone system; which keeps a count of the number of calls and call routing; (2) Monthly NJSpirit Intakes; which record decision making on calls received by hotline screeners, and (3) NJSpirit extracts of assigned CWS Referrals and CPS Reports.

²The number of Intakes, CPS Reports, and CWS Referrals are based on an extract from NJSpirit. Data extracted by the Office of Research, Evaluation, and Reporting on **November 9, 2018** includes all Intakes, CPS Reports, and CWS Referrals received from **October 1, 2018 through October 31, 2018**.

³The number calls received through the ACD System that were directed to a screener from any call-in phone number.

⁴The number of calls received through the ACD System that are abandoned either while waiting in queue or while ringing.

⁵The number of Intakes entered in NJSpirit from the number of calls received.

⁶The number of Intakes recorded in NJSpirit, by type of Intake. There is not a one-to-one relationship between an ACD call and an Intake; multiple calls to State Central Registry (SCR) may result in a single Intake, or one call may result in multiple Intakes.

⁷Intake: The process of documenting: a report of alleged abuse or neglect of a child (CPS); a request for services on behalf of a child, or a referral of a child for services (CWS); a call in which the caller provides additional or clarifying information about a current service case or active investigation (RI); informing a caller of, or referring a caller to, services available from other private or public sources (I&R); a call that requires no action by CP&P (NAR); or a response to a simple inquiry (IO).

⁸NJ SPIRIT: NJ Statewide Protection Investigation and Reporting Information Tool case management system

CP&P Annual Trends in CPS Reports and CWS Referrals

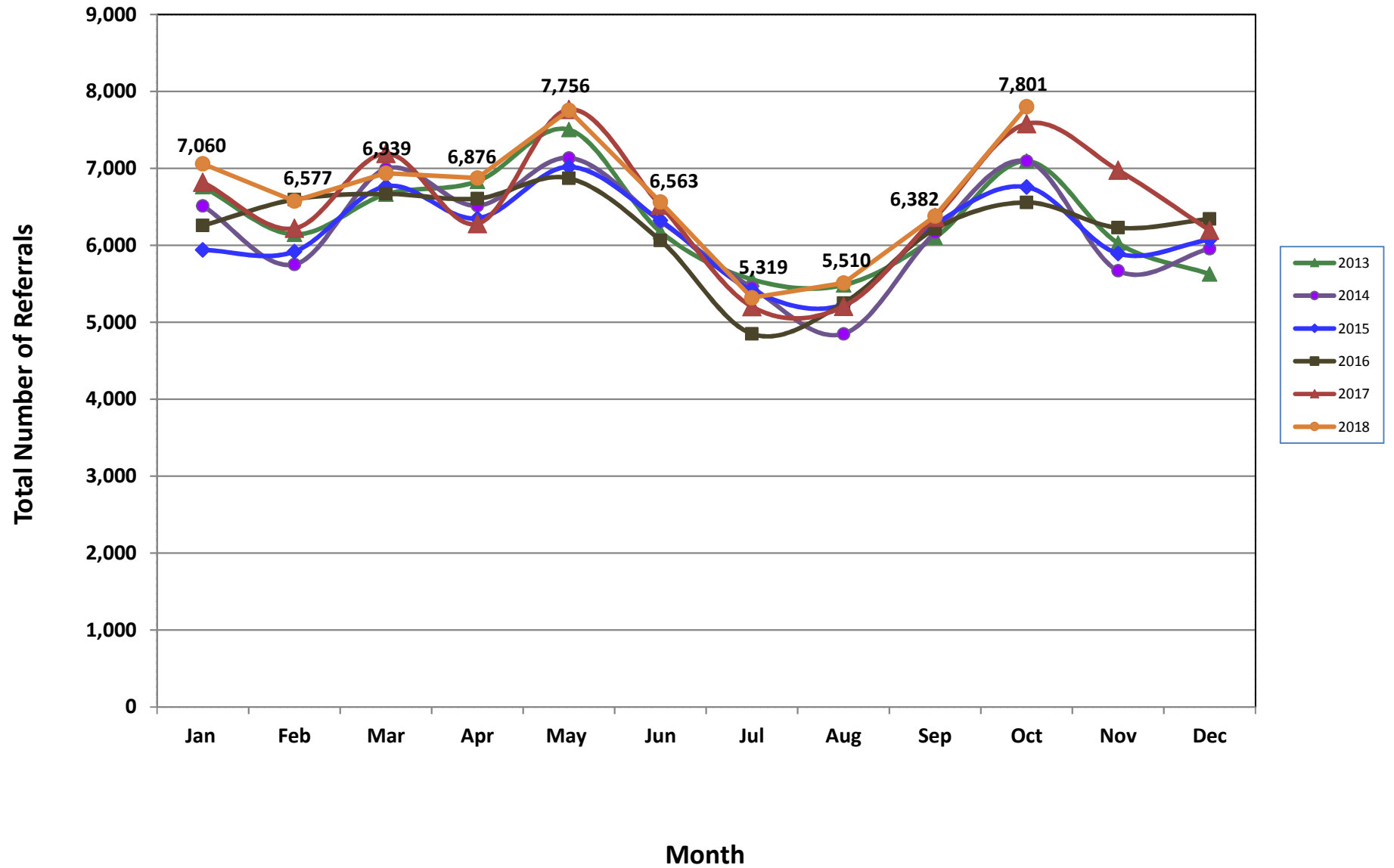


Table 2: Assignments to CP&P Offices: CPS Reports and CWS Referrals¹

Intake Date ³		CPS Reports ²	CWS Referrals ²	Total Assignments ²
2013	Jan 2013	5,464	1,296	6,760
	Feb 2013	4,966	1,177	6,143
	Mar 2013	5,355	1,309	6,664
	Apr 2013	5,430	1,402	6,832
	May 2013	5,993	1,510	7,503
	Jun 2013	4,947	1,230	6,177
	Jul 2013	4,330	1,228	5,558
	Aug 2013	4,330	1,155	5,485
	Sep 2013	4,851	1,251	6,102
	Oct 2013	5,614	1,481	7,095
	Nov 2013	4,694	1,334	6,028
	Dec 2013	4,397	1,229	5,626
	Total	60,371	15,602	75,973
2014	Jan 2014	5,097	1,416	6,513
	Feb 2014	4,457	1,295	5,752
	Mar 2014	5,408	1,586	6,994
	Apr 2014	5,049	1,467	6,516
	May 2014	5,501	1,635	7,136
	Jun 2014	4,796	1,517	6,313
	Jul 2014	4,202	1,247	5,449
	Aug 2014	3,629	1,222	4,851
	Sep 2014	4,668	1,498	6,166
	Oct 2014	5,509	1,586	7,095
	Nov 2014	4,254	1,416	5,670
	Dec 2014	4,509	1,447	5,956
	Total	57,079	17,332	74,411
2015	Jan 2015	4,549	1,391	5,940
	Feb 2015	4,574	1,345	5,919
	Mar 2015	5,187	1,580	6,767
	Apr 2015	4,967	1,384	6,351
	May 2015	5,457	1,561	7,018
	Jun 2015	4,887	1,436	6,323
	Jul 2015	4,140	1,273	5,413
	Aug 2015	3,978	1,256	5,234
	Sep 2015	4,776	1,495	6,271
	Oct 2015	5,139	1,619	6,758
	Nov 2015	4,417	1,477	5,894
	Dec 2015	4,530	1,544	6,074
	Total	56,601	17,361	73,962

Table 2: Assignments to CP&P Offices: CPS Reports and CWS Referrals¹

Intake Date ³		CPS Reports ²	CWS Referrals ²	Total Assignments ²
2016	Jan 2016	4,686	1,571	6,257
	Feb 2016	4,974	1,622	6,596
	Mar 2016	5,000	1,669	6,669
	Apr 2016	5,065	1,542	6,607
	May 2016	5,238	1,633	6,871
	Jun 2016	4,602	1,461	6,063
	Jul 2016	3,663	1,187	4,850
	Aug 2016	3,941	1,307	5,248
	Sep 2016	4,654	1,559	6,213
	Oct 2016	4,935	1,622	6,557
	Nov 2016	4,677	1,552	6,229
	Dec 2016	4,762	1,580	6,342
	Total	56,197	18,305	74,502
2017	Jan 2017	5,111	1,708	6,819
	Feb 2017	4,716	1,504	6,220
	Mar 2017	5,349	1,843	7,192
	Apr 2017	4,790	1,490	6,280
	May 2017	5,847	1,919	7,766
	Jun 2017	4,853	1,665	6,518
	Jul 2017	3,814	1,389	5,203
	Aug 2017	3,866	1,340	5,206
	Sep 2017	4,719	1,643	6,362
	Oct 2017	5,613	1,966	7,579
	Nov 2017	5,223	1,753	6,976
	Dec 2017	4,601	1,594	6,195
	Total	58,502	19,814	78,316
2018	Jan 2018	5,276	1,784	7,060
	Feb 2018	4,933	1,644	6,577
	Mar 2018	5,212	1,727	6,939
	Apr 2018	5,275	1,601	6,876
	May 2018	5,920	1,836	7,756
	Jun 2018	4,948	1,615	6,563
	Jul 2018	4,011	1,308	5,319
	Aug 2018	4,102	1,408	5,510
	Sep 2018	4,748	1,634	6,382
	Oct 2018	5,790	2,011	7,801
	Total	50,215	16,568	66,783
Grand Total		338,965	104,982	443,947

¹Source of Data: NJ SPIRIT

²A CPS Report or a CWS Referral may include multiple children in a family, with one or more allegation or request for services. In these cases, each CPS Report or CWS Referral is counted once - the CPS Report or the CWS Referral is the unit of analysis rather than the child.

³Prior to January 2014, the number of CPS Reports and CWS Referrals was based on the type of assignment of the CPS Report or CWS Referral. Beginning in January 2014, the number of CPS Reports and CWS Referrals is based on the number of CPS Reports and CWS Referrals received.

Table 3: Source of CPS Reports and CWS Referrals

	Source	Oct 2017	Nov 2017	Dec 2017	Jan 2018	Feb 2018	Mar 2018	Apr 2018	May 2018	Jun 2018	Jul 2018	Aug 2018	Sep 2018	Oct 2018		13 Month Total	
CPS Reports and CWS Referrals	School Staff	2030	1851	1622	1932	1970	1969	1783	2213	1243	184	118	1237	2256	29%	20,408	23%
	Healthcare Provider	968	953	848	1003	809	931	932	994	885	904	920	928	1018	13%	12,093	14%
	Law Enforcement	1236	1130	988	1018	1001	1149	1179	1264	1220	1238	1201	1251	1188	15%	15,063	17%
	Government Agency	475	399	408	392	410	466	417	446	441	436	468	428	521	7%	5,707	7%
	Parent	567	571	487	569	468	469	509	548	574	573	590	569	563	7%	7,057	8%
	Relative/Friend/Neighbor	513	493	396	531	394	440	475	496	517	475	488	475	452	6%	6,145	7%
	Anonymous	753	641	595	602	623	641	628	789	683	538	573	565	769	10%	8,400	10%
	CP&P	150	107	129	125	121	107	130	143	140	115	142	106	131	2%	1,646	2%
	Court/Legal	148	116	135	130	130	131	158	164	154	143	193	141	171	2%	1,914	2%
	Community Group/Individual	320	299	265	318	289	294	325	290	301	290	317	301	301	4%	3,910	4%
	Facility Staff (incl Correctional Facility)	97	75	46	85	70	72	68	97	64	101	135	103	97	1%	1,110	1%
	Child (Self)	32	41	25	49	33	41	38	34	49	38	53	35	51	1%	519	1%
	Other	272	273	237	294	242	207	217	261	272	267	289	228	262	3%	3,321	4%
	Daycare/Babysitter	18	27	14	12	17	22	17	17	20	17	23	15	21	0%	240	0%
	Total		7,579	6,976	6,195	7,060	6,577	6,939	6,876	7,756	6,563	5,319	5,510	6,382	7,801		87,533

Table 4: Monthly Count of CPS Reports and CWS Referrals Assigned to Counties

County														Average Number of Assignments Last 13 Months	Sep 18 to Oct 18 Numerical Difference
	Oct 2017	Nov 2017	Dec 2017	Jan 2018	Feb 2018	Mar 2018	Apr 2018	May 2018	Jun 2018	Jul 2018	Aug 2018	Sep 2018	Oct 2018		
Atlantic	293	253	221	291	208	267	260	326	284	213	231	295	280	263	-15
Bergen	428	418	416	394	371	458	374	474	354	291	243	333	467	386	134
Burlington	371	343	294	315	307	290	312	302	304	284	246	270	348	307	78
Camden	675	576	535	634	526	559	562	643	564	472	485	543	606	568	63
Cape May	86	84	77	82	73	68	95	100	97	80	85	109	87	86	-22
Cumberland	252	213	193	250	174	223	265	266	202	159	205	225	232	220	7
Essex	804	721	665	787	695	778	770	811	713	545	622	666	859	726	193
Gloucester	282	267	252	268	219	239	272	298	231	200	229	215	260	249	45
Hudson	452	454	418	439	386	466	454	509	412	330	342	426	540	433	114
Hunterdon	64	50	60	60	54	58	67	62	56	48	49	57	75	58	18
Mercer	282	298	232	264	262	262	295	330	274	223	247	231	365	274	134
Middlesex	533	525	419	540	463	498	473	534	474	358	366	433	563	475	130
Monmouth	442	381	327	413	384	427	376	446	341	302	277	410	426	381	16
Morris	290	250	219	269	191	245	240	256	199	204	186	215	292	235	77
Ocean	422	418	356	411	364	420	397	427	398	357	371	386	482	401	96
Passaic	576	513	421	451	456	469	448	571	423	307	383	421	567	462	146
Salem	83	100	80	90	68	99	92	90	79	65	77	104	90	86	-14
Somerset	166	169	172	156	157	179	174	180	189	141	128	155	200	167	45
Sussex	106	111	92	126	90	102	124	112	118	82	82	99	120	105	21
Union	353	343	324	361	366	352	321	379	343	260	221	328	396	334	68
Warren	131	102	72	94	101	117	108	117	110	87	105	118	105	105	-13
County Subtotals	7,091	6,589	5,845	6,695	5,915	6,576	6,479	7,233	6,165	5,008	5,180	6,039	7,360	6,321	1,321
Central Region IAIU	68	73	55	62	58	63	62	89	64	40	57	39	67	61	28
Metro Region IAIU	58	48	56	54	63	48	52	78	60	40	38	50	65	55	15
Northern Region IAIU	70	58	54	60	53	53	69	88	60	42	34	63	71	60	8
Southern Region IAIU	102	77	84	90	75	74	86	95	71	61	76	67	100	81	33
IAIU Subtotals	298	256	249	266	249	238	269	350	255	183	205	219	303	257	84
Unable to Determine¹	187	129	98	94	407	122	125	169	137	128	122	123	135	152	12
Other Offices	3	2	3	5	6	3	3	4	6	0	3	1	3	3	2
Grand Total	7,579	6,976	6,195	7,060	6,577	6,939	6,876	7,756	6,563	5,319	5,510	6,382	7,801	6,733	1419

¹CPS Reports or CWS Referrals not assigned to an office through the Assignment Designee, but were assigned to an office for an assessment or investigation.



Table 5: Monthly Count of CPS Reports and CWS Referrals Assigned to CP&P Local Offices

County	Local Office	Type of Referral	Oct 2017	Nov 2017	Dec 2017	Jan 2018	Feb 2018	Mar 2018	Apr 2018	May 2018	Jun 2018	Jul 2018	Aug 2018	Sep 2018	Oct 2018	Total
ATLANTIC	Atlantic East	CPS	138	99	94	127	95	131	118	157	132	97	106	132	132	1,558
		CWS	47	51	33	36	29	28	32	40	49	31	46	43	50	515
		Total	185	150	127	163	124	159	150	197	181	128	152	175	182	2,073
	Atlantic West	CPS	74	79	75	94	68	75	88	98	74	68	60	89	80	1,022
		CWS	34	24	19	34	16	33	22	31	29	17	19	31	18	327
		Total	108	103	94	128	84	108	110	129	103	85	79	120	98	1,349
	County Totals	CPS	212	178	169	221	163	206	206	255	206	165	166	221	212	2,580
		CWS	81	75	52	70	45	61	54	71	78	48	65	74	68	842
		Total	293	253	221	291	208	267	260	326	284	213	231	295	280	3,422
BERGEN	Bergen Central	CPS	142	140	128	138	112	144	122	141	112	76	59	88	147	1,549
		CWS	45	47	48	40	44	54	37	58	52	32	25	44	60	586
		Total	187	187	176	178	156	198	159	199	164	108	84	132	207	2,135
	Bergen South	CPS	182	167	177	154	163	198	144	199	119	136	112	152	187	2,090
		CWS	59	64	63	62	52	62	71	76	71	47	47	49	73	796
		Total	241	231	240	216	215	260	215	275	190	183	159	201	260	2,886
	County Totals	CPS	324	307	305	292	275	342	266	340	231	212	171	240	334	3,639
		CWS	104	111	111	102	96	116	108	134	123	79	72	93	133	1,382
		Total	428	418	416	394	371	458	374	474	354	291	243	333	467	5,021
BURLINGTON	Burlington East	CPS	146	137	101	129	110	118	116	104	115	117	93	93	131	1,510
		CWS	52	43	38	39	46	35	36	46	45	37	33	31	53	534
		Total	198	180	139	168	156	153	152	150	160	154	126	124	184	2,044
	Burlington West	CPS	126	117	99	108	117	105	108	120	114	100	83	113	124	1,434
		CWS	47	46	56	39	34	32	52	32	30	30	37	33	40	508
		Total	173	163	155	147	151	137	160	152	144	130	120	146	164	1,942
	County Totals	CPS	272	254	200	237	227	223	224	224	229	217	176	206	255	2,944
		CWS	99	89	94	78	80	67	88	78	75	67	70	64	93	1,042
		Total	371	343	294	315	307	290	312	302	304	284	246	270	348	3,986
CAMDEN	Camden Central	CPS	148	129	122	157	108	126	111	141	109	113	109	103	116	1,592
		CWS	40	41	51	31	30	39	32	47	33	27	27	36	41	475
		Total	188	170	173	188	138	165	143	188	142	140	136	139	157	2,067
	Camden East	CPS	123	118	100	116	99	129	139	127	113	99	99	106	110	1,478
		CWS	49	46	27	39	37	32	30	30	41	32	36	44	39	482
		Total	172	164	127	155	136	161	169	157	154	131	135	150	149	1,960
	Camden North	CPS	113	109	82	118	114	105	106	120	115	80	74	91	119	1,346
		CWS	47	31	35	50	24	34	25	41	44	26	33	34	42	466
		Total	160	140	117	168	138	139	131	161	159	106	107	125	161	1,812
	Camden South	CPS	108	74	85	89	79	75	100	113	86	72	85	98	108	1,172
		CWS	47	28	33	34	35	19	19	24	23	23	22	31	31	369
		Total	155	102	118	123	114	94	119	137	109	95	107	129	139	1,541
County Totals	CPS	492	430	389	480	400	435	456	501	423	364	367	398	453	5,588	
	CWS	183	146	146	154	126	124	106	142	141	108	118	145	153	1,792	
	Total	675	576	535	634	526	559	562	643	564	472	485	543	606	7,380	
CAPE MAY	Cape May	CPS	66	61	58	64	47	46	69	81	76	60	73	89	64	854
		CWS	20	23	19	18	26	22	26	19	21	20	12	20	23	269
		Total	86	84	77	82	73	68	95	100	97	80	85	109	87	1,123
	County Totals	CPS	66	61	58	64	47	46	69	81	76	60	73	89	64	854
		CWS	20	23	19	18	26	22	26	19	21	20	12	20	23	269
		Total	86	84	77	82	73	68	95	100	97	80	85	109	87	1,123
CUMBERLAND	Cumberland East	CPS	68	48	44	62	36	55	60	56	58	47	44	60	55	693
		CWS	27	13	22	16	17	18	18	17	15	15	13	15	18	224
		Total	95	61	66	78	53	73	78	73	73	62	57	75	73	917
	Cumberland West	CPS	117	113	101	146	92	126	146	146	111	82	118	118	116	1,532
		CWS	40	39	26	26	29	24	41	47	18	15	30	32	43	410
		Total	157	152	127	172	121	150	187	193	129	97	148	150	159	1,942
	County Totals	CPS	185	161	145	208	128	181	206	202	169	129	162	178	171	2,225
		CWS	67	52	48	42	46	42	59	64	33	30	43	47	61	634
		Total	252	213	193	250	174	223	265	266	202	159	205	225	232	2,859

Data in this report is preliminary and may differ from any final report. This report is produced to ensure continuous quality improvement throughout DCF.

Table 5: Monthly Count of CPS Reports and CWS Referrals Assigned to CP&P Local Offices

County	Local Office	Type of Referral	Month													Total
			Oct 2017	Nov 2017	Dec 2017	Jan 2018	Feb 2018	Mar 2018	Apr 2018	May 2018	Jun 2018	Jul 2018	Aug 2018	Sep 2018	Oct 2018	
ESSEX	Essex Central	CPS	121	108	79	93	77	107	103	113	95	70	92	68	97	1,223
		CWS	40	33	28	42	22	35	36	39	23	21	23	41	35	418
		Total	161	141	107	135	99	142	139	152	118	91	115	109	132	1,641
	Essex North	CPS	68	67	64	80	71	75	70	83	62	41	61	65	82	889
		CWS	35	31	25	25	21	34	24	24	35	18	15	28	31	346
		Total	103	98	89	105	92	109	94	107	97	59	76	93	113	1,235
	Essex South	CPS	69	68	72	83	64	63	83	65	92	46	76	63	80	924
		CWS	34	20	28	18	30	21	20	24	25	27	17	28	44	336
		Total	103	88	100	101	94	84	103	89	117	73	93	91	124	1260
	Newark Center City	CPS	110	98	104	107	86	105	88	105	91	75	81	102	123	1275
		CWS	29	34	18	34	35	34	38	42	33	26	26	27	44	420
		Total	139	132	122	141	121	139	126	147	124	101	107	129	167	1695
	Newark Northeast	CPS	99	106	76	107	97	97	99	104	81	71	84	76	117	1214
		CWS	44	34	30	44	39	44	38	40	42	24	35	29	58	501
		Total	143	140	106	151	136	141	137	144	123	95	119	105	175	1715
Newark South	CPS	116	93	103	116	111	116	128	138	106	95	76	93	111	1402	
	CWS	39	29	38	38	42	47	43	34	28	31	36	46	37	488	
	Total	155	122	141	154	153	163	171	172	134	126	112	139	148	1890	
County Totals	CPS	583	540	498	586	506	563	571	608	527	398	470	467	610	6927	
	CWS	221	181	167	201	189	215	199	203	186	147	152	199	249	2509	
	Total	804	721	665	787	695	778	770	811	713	545	622	666	859	9436	
GLOUCESTER	Gloucester East	CPS	102	89	96	94	85	79	113	118	79	75	76	86	104	1196
		CWS	28	34	30	35	22	24	41	26	18	20	31	22	41	372
		Total	130	123	126	129	107	103	154	144	97	95	107	108	145	1568
	Gloucester West	CPS	123	113	100	105	93	100	96	118	100	82	101	79	92	1302
		CWS	29	31	26	34	19	36	22	36	34	23	21	28	23	362
		Total	152	144	126	139	112	136	118	154	134	105	122	107	115	1664
	County Totals	CPS	225	202	196	199	178	179	209	236	179	157	177	165	196	2498
		CWS	57	65	56	69	41	60	63	62	52	43	52	50	64	734
		Total	282	267	252	268	219	239	272	298	231	200	229	215	260	3232
HUDSON	Hudson Central	CPS	71	87	83	103	88	98	115	131	93	83	89	93	141	1275
		CWS	34	41	38	46	37	36	36	56	57	38	39	43	43	544
		Total	105	128	121	149	125	134	151	187	150	121	128	136	184	1819
	Hudson North	CPS	76	83	87	75	77	92	98	79	62	34	51	71	92	977
		CWS	29	33	21	29	12	32	26	38	22	19	14	26	33	334
		Total	105	116	108	104	89	124	124	117	84	53	65	97	125	1311
	Hudson South	CPS	86	68	46	57	47	65	53	47	55	38	43	41	60	706
		CWS	39	17	19	26	19	24	15	18	19	16	17	34	23	286
		Total	125	85	65	83	66	89	68	65	74	54	60	75	83	992
	Hudson West	CPS	87	104	89	74	80	80	80	102	72	72	59	84	94	1077
		CWS	30	21	35	29	26	39	31	38	32	30	30	34	54	429
		Total	117	125	124	103	106	119	111	140	104	102	89	118	148	1506
County Totals	CPS	320	342	305	309	292	335	346	359	282	227	242	289	387	4035	
	CWS	132	112	113	130	94	131	108	150	130	103	100	137	153	1593	
	Total	452	454	418	439	386	466	454	509	412	330	342	426	540	5628	
HUNTERDON	Hunterdon	CPS	40	30	44	43	36	42	47	44	43	37	40	56	542	
		CWS	24	20	16	17	18	16	20	18	13	11	9	17	19	218
		Total	64	50	60	60	54	58	67	62	56	48	49	57	75	760
	County Totals	CPS	40	30	44	43	36	42	47	44	43	37	40	56	542	
		CWS	24	20	16	17	18	16	20	18	13	11	9	17	19	218
Total		64	50	60	60	54	58	67	62	56	48	49	57	75	760	
MERCER	Mercer North	CPS	104	105	79	94	103	95	124	125	107	81	107	84	139	1347
		CWS	34	38	35	46	43	42	34	39	32	31	28	25	57	484
		Total	138	143	114	140	146	137	158	164	139	112	135	109	196	1831
	Mercer South	CPS	109	112	86	89	98	90	104	134	105	86	78	89	125	1305
		CWS	35	43	32	35	18	35	33	32	30	25	34	33	44	429
		Total	144	155	118	124	116	125	137	166	135	111	112	122	169	1734
	County Totals	CPS	213	217	165	183	201	185	228	259	212	167	185	173	264	2652
		CWS	69	81	67	81	61	77	67	71	62	56	62	58	101	913
Total		282	298	232	264	262	262	295	330	274	223	247	231	365	3565	

Data in this report is preliminary and may differ from any final report. This report is produced to ensure continuous quality improvement throughout DCF.



Table 5: Monthly Count of CPS Reports and CWS Referrals Assigned to CP&P Local Offices

County	Local Office	Type of Referral	Oct 2017	Nov 2017	Dec 2017	Jan 2018	Feb 2018	Mar 2018	Apr 2018	May 2018	Jun 2018	Jul 2018	Aug 2018	Sep 2018	Oct 2018	Total
MIDDLESEX	Middlesex Central	CPS	102	115	87	139	96	118	104	118	101	78	62	75	116	1311
		CWS	41	35	35	40	35	29	36	29	36	32	28	30	31	437
		Total	143	150	122	179	131	147	140	147	137	110	90	105	147	1748
	Middlesex Coastal	CPS	142	124	121	127	124	125	128	144	123	111	100	120	161	1650
		CWS	51	53	33	51	28	45	36	52	42	24	37	39	49	540
		Total	193	177	154	178	152	170	164	196	165	135	137	159	210	2190
	Middlesex West	CPS	141	140	106	132	134	148	128	146	128	83	88	129	168	1671
		CWS	56	58	37	51	46	33	41	45	44	30	51	40	38	570
		Total	197	198	143	183	180	181	169	191	172	113	139	169	206	2241
	County Totals	CPS	385	379	314	398	354	391	360	408	352	272	250	324	445	4632
		CWS	148	146	105	142	109	107	113	126	122	86	116	109	118	1547
		Total	533	525	419	540	463	498	473	534	474	358	366	433	563	6179
MONMOUTH	Monmouth North	CPS	173	152	125	160	167	162	149	174	152	118	107	159	165	1963
		CWS	54	54	44	61	60	58	56	61	34	36	36	61	62	677
		Total	227	206	169	221	227	220	205	235	186	154	143	220	227	2640
	Monmouth South	CPS	161	133	114	150	123	159	137	160	113	112	91	149	149	1751
		CWS	54	42	44	42	34	48	34	51	42	36	43	41	50	561
		Total	215	175	158	192	157	207	171	211	155	148	134	190	199	2312
	County Totals	CPS	334	285	239	310	290	321	286	334	265	230	198	308	314	3714
		CWS	108	96	88	103	94	106	90	112	76	72	79	102	112	1238
		Total	442	381	327	413	384	427	376	446	341	302	277	410	426	4952
MORRIS	Morris East	CPS	81	86	66	96	64	73	71	94	66	79	74	75	100	1025
		CWS	36	38	31	40	32	34	32	29	25	24	20	24	42	407
		Total	117	124	97	136	96	107	103	123	91	103	94	99	142	1432
	Morris West	CPS	112	99	88	86	63	97	103	107	77	75	74	84	118	1183
		CWS	61	27	34	47	32	41	34	26	31	26	18	32	32	441
		Total	173	126	122	133	95	138	137	133	108	101	92	116	150	1624
	County Totals	CPS	193	185	154	182	127	170	174	201	143	154	148	159	218	2208
		CWS	97	65	65	87	64	75	66	55	56	50	38	56	74	848
		Total	290	250	219	269	191	245	240	256	199	204	186	215	292	3056
OCEAN	Ocean North	CPS	179	181	168	163	133	161	167	166	144	163	143	154	203	2125
		CWS	52	45	36	56	43	44	40	69	51	34	38	40	68	616
		Total	231	226	204	219	176	205	207	235	195	197	181	194	271	2741
	Ocean South	CPS	144	142	121	159	146	174	146	149	167	124	135	160	166	1933
		CWS	47	50	31	33	42	41	44	43	36	36	55	32	45	535
		Total	191	192	152	192	188	215	190	192	203	160	190	192	211	2468
	County Totals	CPS	323	323	289	322	279	335	313	315	311	287	278	314	369	4058
		CWS	99	95	67	89	85	85	84	112	87	70	93	72	113	1151
		Total	422	418	356	411	364	420	397	427	398	357	371	386	482	5209
PASSAIC	Passaic Central	CPS	228	199	155	173	171	171	178	243	163	108	128	164	207	2288
		CWS	90	76	78	65	75	74	62	87	54	43	51	55	93	903
		Total	318	275	233	238	246	245	240	330	217	151	179	219	300	3191
	Passaic North	CPS	176	158	131	134	135	166	152	185	143	104	147	128	189	1948
		CWS	82	80	57	79	75	58	56	56	63	52	57	74	78	867
		Total	258	238	188	213	210	224	208	241	206	156	204	202	267	2815
	County Totals	CPS	404	357	286	307	306	337	330	428	306	212	275	292	396	4236
		CWS	172	156	135	144	150	132	118	143	117	95	108	129	171	1770
		Total	576	513	421	451	456	469	448	571	423	307	383	421	567	6006
SALEM	Salem	CPS	67	77	58	68	56	79	77	73	62	52	56	73	68	866
		CWS	16	23	22	22	12	20	15	17	17	13	21	31	22	251
		Total	83	100	80	90	68	99	92	90	79	65	77	104	90	1117
	County Totals	CPS	67	77	58	68	56	79	77	73	62	52	56	73	68	866
		CWS	16	23	22	22	12	20	15	17	17	13	21	31	22	251
Total	83	100	80	90	68	99	92	90	79	65	77	104	90	1117		
SOMERSET	Somerset	CPS	136	130	119	119	127	115	140	136	155	106	93	125	153	1654
		CWS	30	39	53	37	30	64	34	44	34	35	35	30	47	512
		Total	166	169	172	156	157	179	174	180	189	141	128	155	200	2166
	County Totals	CPS	136	130	119	119	127	115	140	136	155	106	93	125	153	1654
		CWS	30	39	53	37	30	64	34	44	34	35	35	30	47	512
Total	166	169	172	156	157	179	174	180	189	141	128	155	200	2166		

Data in this report is preliminary and may differ from any final report. This report is produced to ensure continuous quality improvement throughout DCF.

Table 5: Monthly Count of CPS Reports and CWS Referrals Assigned to CP&P Local Offices

County	Local Office	Type of Referral														Total
			Oct 2017	Nov 2017	Dec 2017	Jan 2018	Feb 2018	Mar 2018	Apr 2018	May 2018	Jun 2018	Jul 2018	Aug 2018	Sep 2018	Oct 2018	
SUSSEX	Sussex	CPS	80	86	70	85	64	70	90	87	94	62	60	72	90	1010
		CWS	26	25	22	41	26	32	34	25	24	20	22	27	30	354
		Total	106	111	92	126	90	102	124	112	118	82	82	99	120	1364
	County Totals	CPS	80	86	70	85	64	70	90	87	94	62	60	72	90	1010
		Total	106	111	92	126	90	102	124	112	118	82	82	99	120	1364
UNION	Union Central	CPS	74	84	91	88	89	87	88	98	78	67	54	76	98	1072
		CWS	31	18	19	30	36	29	25	28	25	23	21	25	33	343
		Total	105	102	110	118	125	116	113	126	103	90	75	101	131	1415
	Union East	CPS	88	91	75	102	91	98	74	89	92	63	48	89	103	1103
		CWS	39	26	29	26	32	33	26	27	32	24	21	34	36	385
		Total	127	117	104	128	123	131	100	116	124	87	69	123	139	1488
	Union West	CPS	88	88	83	77	84	83	81	98	91	58	54	77	84	1046
		CWS	33	36	27	38	34	22	27	39	25	25	23	27	42	398
		Total	121	124	110	115	118	105	108	137	116	83	77	104	126	1444
	County Totals	CPS	250	263	249	267	264	268	243	285	261	188	156	242	285	3221
		CWS	103	80	75	94	102	84	78	94	82	72	65	86	111	1126
		Total	353	343	324	361	366	352	321	379	343	260	221	328	396	4347
WARREN	Warren	CPS	98	69	50	75	72	85	88	93	85	59	82	86	78	1020
		CWS	33	33	22	19	29	32	20	24	25	28	23	32	27	347
		Total	131	102	72	94	101	117	108	117	110	87	105	118	105	1367
	County Totals	CPS	98	69	50	75	72	85	88	93	85	59	82	86	78	1020
		Total	131	102	72	94	101	117	108	117	110	87	105	118	105	1367
County CPS Referral Total		CPS	5,202	4,876	4,302	4,955	4,392	4,908	4,929	5,469	4,611	3,755	3,825	4,461	5,418	61,103
County CWS Referral Total		CWS	1,889	1,713	1,543	1,740	1,523	1,668	1,550	1,764	1,554	1,253	1,355	1,578	1,942	21,072
County Referral Total		Total	7,091	6,589	5,845	6,695	5,915	6,576	6,479	7,233	6,165	5,008	5,180	6,039	7,360	82,175
Central Region IAIU	CPS	68	73	55	62	58	63	62	89	64	40	57	39	67	797	
	CWS	0	0	0	0	0	0	0	0	0	0	0	0	0	0	
	Total	68	73	55	62	58	63	62	89	64	40	57	39	67	797	
Metro Region IAIU	CPS	58	48	56	54	63	48	52	78	60	40	38	50	65	710	
	CWS	0	0	0	0	0	0	0	0	0	0	0	0	0	0	
	Total	58	48	56	54	63	48	52	78	60	40	38	50	65	710	
Northern Region IAIU	CPS	70	58	54	60	53	53	69	88	60	42	34	63	71	775	
	CWS	0	0	0	0	0	0	0	0	0	0	0	0	0	0	
	Total	70	58	54	60	53	53	69	88	60	42	34	63	71	775	
Southern Region IAIU	CPS	102	77	84	90	75	74	86	95	71	61	76	67	100	1,058	
	CWS	0	0	0	0	0	0	0	0	0	0	0	0	0	0	
	Total	102	77	84	90	75	74	86	95	71	61	76	67	100	1,058	
IAIU CPS Subtotal		CPS	298	256	249	266	249	238	269	350	255	183	205	219	303	3,340
IAIU CWS Subtotal		CWS	0	0	0	0	0	0	0	0	0	0	0	0	0	0
IAIU Subtotal		Total	298	256	249	266	249	238	269	350	255	183	205	219	303	3,340
County and IAIU CPS Subtotal		CPS	5,500	5,132	4,551	5,221	4,641	5,146	5,198	5,819	4,866	3,938	4,030	4,680	5,721	64,443
County and IAIU CWS Subtotal		CWS	1,889	1,713	1,543	1,740	1,523	1,668	1,550	1,764	1,554	1,253	1,355	1,578	1,942	21,072
Unable to Determine ⁽¹⁾		Total	187	129	98	94	407	122	125	169	137	128	122	123	135	1,976
Other Offices		Total	3	2	3	5	6	3	3	4	6	0	3	1	3	42
Grand Total		Total	7,579	6,976	6,195	7,060	6,577	6,939	6,876	7,756	6,563	5,319	5,510	6,382	7,801	87,533

⁽¹⁾CPS Reports or CWS Referrals not assigned to an office through the Assignment Designee, but were assigned to an office for an assessment or investigation.