



Child Protection and Permanency

Monthly Screening and Investigation Report October 2019

Christine Norbut Beyer, MSW
Commissioner



Table of Contents

Table 1: NJ State Central Registry Activity: Monthly Child Abuse and Neglect Hotline Calls, Intakes and Assignments to Child Protection & Permanency (CP&P) Offices

Chart 1: CP&P Annual Trends in Child Protection Services (CPS) Reports and Child Welfare Services (CWS) Referrals

Table 2: Assignments to CP&P Offices: CPS Reports and CWS Referrals

Table 3: Source of CPS Reports and CWS Referrals

Table 4: Monthly Count of CPS Reports and CWS Referrals Assigned to Counties

Table 5: Monthly Count of CPS Reports and CWS Referrals Assigned to CP&P Local Offices

Table 1: NJ State Central Registry Activity: Monthly Child Abuse and Neglect Hotline Calls, Intakes and Assignments to CP&P Offices^{1,2,7}

2018 - 2019	Hotline Call Activity				Intakes Recorded in NJ SPIRIT ^{6,8}												Assignments to CP&P Offices				
	Total Calls to SCR ³	Abandon Calls ⁴	Average Time to Answer (seconds)	Resulting NJS Intakes ⁵	CPS Reports		CWS Referrals		No Action Required (NAR)		Related Information (RI)		Information & Referral (I&R)		Information Only (IO)		CPS Reports		CWS Referrals		Total
					n	%	n	%	n	%	n	%	n	%	n	%	n	%	n	%	
October 2018	15,489	904	68	16,470	5,790	35.2%	2,008	12.2%	260	1.6%	4,103	24.9%	1,827	11.1%	2,482	15.1%	5,790	74.2%	2,011	25.8%	7,801
November 2018	13,533	1,111	80	14,067	4,973	35.4%	1,621	11.5%	210	1.5%	3,749	26.7%	1,453	10.3%	2,061	14.7%	4,973	75.4%	1,620	24.6%	6,593
December 2018	13,020	971	78	13,683	4,891	35.7%	1,524	11.1%	174	1.3%	3,518	25.7%	1,446	10.6%	2,130	15.6%	4,891	76.2%	1,527	23.8%	6,418
January 2019	14,566	1,097	91	15,153	5,443	35.9%	1,858	12.3%	224	1.5%	3,764	24.8%	1,673	11.0%	2,191	14.5%	5,443	74.6%	1,858	25.4%	7,301
February 2019	12,995	1,095	102	13,518	4,811	35.6%	1,626	12.0%	213	1.6%	3,476	25.7%	1,506	11.1%	1,886	14.0%	4,811	74.7%	1,628	25.3%	6,439
March 2019	14,637	1,422	112	15,528	5,677	36.6%	1,826	11.8%	212	1.4%	3,825	24.6%	1,762	11.3%	2,226	14.3%	5,677	75.7%	1,824	24.3%	7,501
April 2019	14,252	1,404	113	14,540	5,313	36.5%	1,630	11.2%	253	1.7%	3,500	24.1%	1,721	11.8%	2,123	14.6%	5,313	76.5%	1,630	23.5%	6,943
May 2019	15,705	1,615	120	15,810	5,853	37.0%	1,780	11.3%	229	1.4%	3,784	23.9%	1,852	11.7%	2,312	14.6%	5,853	76.7%	1,781	23.3%	7,634
June 2019	13,596	1,287	107	14,057	4,872	33.0%	1,507	10.7%	268	1.9%	3,537	25.2%	1,703	12.1%	2,168	15.4%	4,874	76.4%	1,509	23.6%	6,383
July 2019	12,135	874	73	12,821	4,277	33.4%	1,309	10.2%	267	2.1%	3,250	25.3%	1,452	11.3%	2,266	17.7%	4,277	76.6%	1,309	23.4%	5,586
August 2019	11,044	482	38	12,291	4,068	33.1%	1,303	10.6%	222	1.8%	3,113	25.3%	1,381	11.2%	2,204	17.9%	4,068	75.7%	1,306	24.3%	5,374
September 2019	13,737	991	72	14,995	5,315	35.4%	1,551	10.3%	266	1.8%	3,695	24.6%	1,790	11.9%	2,378	15.9%	5,315	77.4%	1,551	22.6%	6,866
October 2019	15,981	1,270	95	16,503	5,968	36.2%	1,923	11.7%	260	1.6%	4,039	24.5%	1,959	11.9%	2,354	14.3%	5,968	75.6%	1,926	24.4%	7,894
	13,899	1,117	88	14,572	5,173	35.5%	1,651	11.3%	235	1.6%	3,643	25.0%	1,656	11.4%	2,214	15.2%	5,173	75.8%	1,652	24.2%	6,826
Overall Total	180,690	14,523		189,436	67,251		21,466		3,058		47,353		21,525		28,781		67,253	75.8%	21,480	24.2%	88,733

¹Comes from three distinct sources: (1) the Automatic Call Distribution (ACD) phone system; which keeps a count of the number of calls and call routing; (2) Monthly NJSpirit Intakes; which record decision making on calls received by hotline screeners, and (3) NJSpirit extracts of assigned CWS Referrals and CPS Reports.

²The number of Intakes, CPS Reports, and CWS Referrals are based on an extract from NJSpirit. Data extracted by the Office of Research, Evaluation, and Reporting on **November 8, 2019** includes all Intakes, CPS Reports, and CWS Referrals received from **October 1, 2019 through October 31, 2019**.

³The number calls received through the ACD System that were directed to a screener from any call-in phone number.

⁴The number of calls received through the ACD System that are abandoned either while waiting in queue or while ringing.

⁵The number of Intakes entered in NJSpirit from the number of calls received.

⁶The number of Intakes recorded in NJSpirit, by type of Intake. There is not a one-to-one relationship between an ACD call and an Intake; multiple calls to State Central Registry (SCR) may result in a single Intake, or one call may result in multiple Intakes.

⁷Intake: The process of documenting: a report of alleged abuse or neglect of a child (CPS); a request for services on behalf of a child, or a referral of a child for services (CWS); a call in which the caller provides additional or clarifying information about a current service case or active investigation (RI); informing a caller of, or referring a caller to, services available from other private or public sources (I&R); a call that requires no action by CP&P (NAR); or a response to a simple inquiry (IO).

CP&P Annual Trends in CPS Reports and CWS Referrals

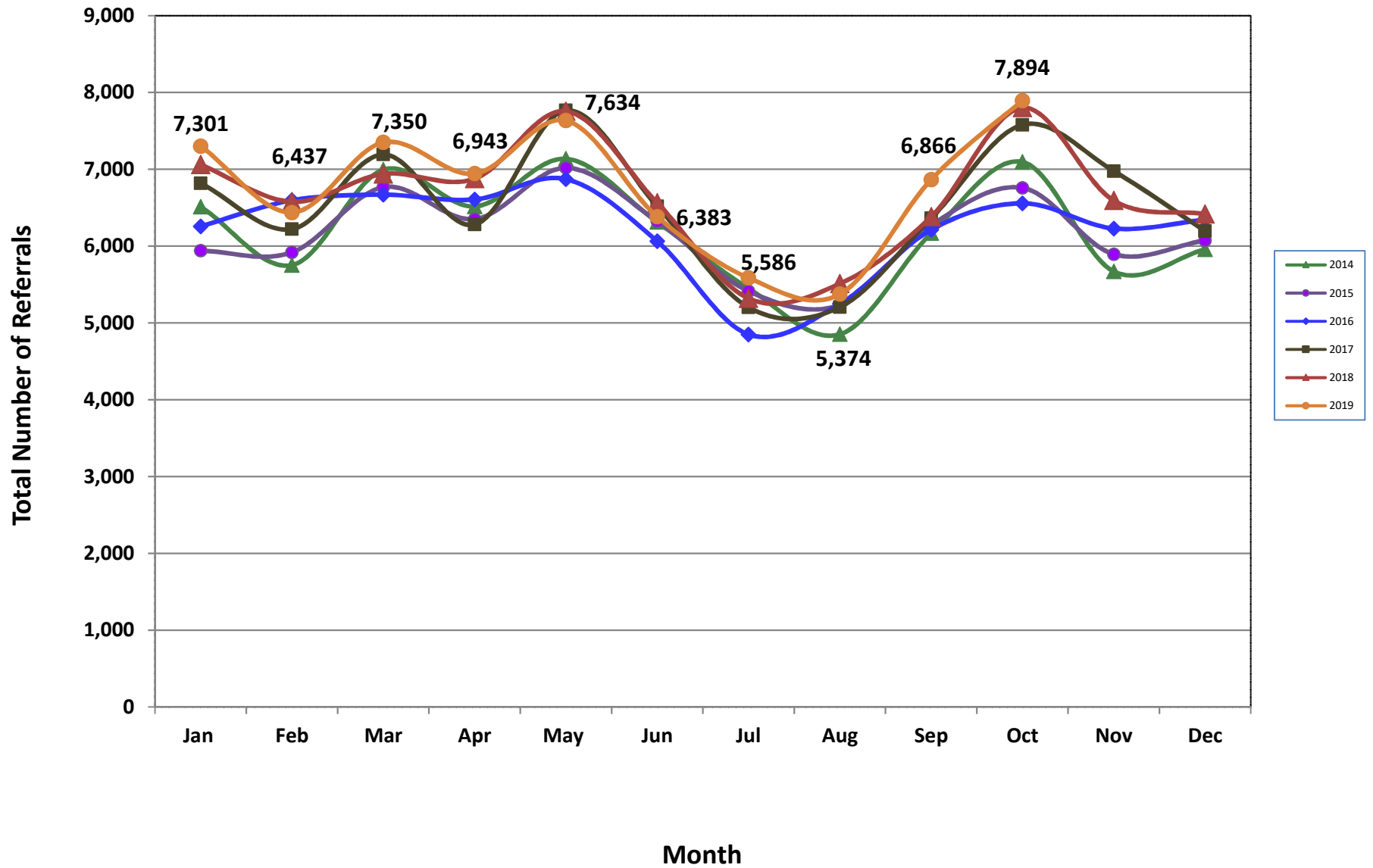


Table 2: Assignments to CP&P Offices: CPS Reports and CWS Referrals¹

Intake Date ³		CPS Reports ²	CWS Referrals ²	Total Assignments ²
2014	Jan 2014	5,097	1,416	6,513
	Feb 2014	4,457	1,295	5,752
	Mar 2014	5,408	1,586	6,994
	Apr 2014	5,049	1,467	6,516
	May 2014	5,501	1,635	7,136
	Jun 2014	4,796	1,517	6,313
	Jul 2014	4,202	1,247	5,449
	Aug 2014	3,629	1,222	4,851
	Sep 2014	4,668	1,498	6,166
	Oct 2014	5,509	1,586	7,095
	Nov 2014	4,254	1,416	5,670
	Dec 2014	4,509	1,447	5,956
	Total	57,079	17,332	74,411
2015	Jan 2015	4,549	1,391	5,940
	Feb 2015	4,574	1,345	5,919
	Mar 2015	5,187	1,580	6,767
	Apr 2015	4,967	1,384	6,351
	May 2015	5,457	1,561	7,018
	Jun 2015	4,887	1,436	6,323
	Jul 2015	4,140	1,273	5,413
	Aug 2015	3,978	1,256	5,234
	Sep 2015	4,776	1,495	6,271
	Oct 2015	5,139	1,619	6,758
	Nov 2015	4,417	1,477	5,894
	Dec 2015	4,530	1,544	6,074
	Total	56,601	17,361	73,962
2016	Jan 2016	4,686	1,571	6,257
	Feb 2016	4,974	1,622	6,596
	Mar 2016	5,000	1,669	6,669
	Apr 2016	5,065	1,542	6,607
	May 2016	5,238	1,633	6,871
	Jun 2016	4,602	1,461	6,063
	Jul 2016	3,663	1,187	4,850
	Aug 2016	3,941	1,307	5,248
	Sep 2016	4,654	1,559	6,213
	Oct 2016	4,935	1,622	6,557
	Nov 2016	4,677	1,552	6,229
	Dec 2016	4,762	1,580	6,342
	Total	56,197	18,305	74,502

Table 2: Assignments to CP&P Offices: CPS Reports and CWS Referrals¹

Intake Date ³		CPS Reports ²	CWS Referrals ²	Total Assignments ²
2017	Jan 2017	5,111	1,708	6,819
	Feb 2017	4,716	1,504	6,220
	Mar 2017	5,349	1,843	7,192
	Apr 2017	4,790	1,490	6,280
	May 2017	5,847	1,919	7,766
	Jun 2017	4,853	1,665	6,518
	Jul 2017	3,814	1,389	5,203
	Aug 2017	3,866	1,340	5,206
	Sep 2017	4,719	1,643	6,362
	Oct 2017	5,613	1,966	7,579
	Nov 2017	5,223	1,753	6,976
	Dec 2017	4,601	1,594	6,195
	Total	58,502	19,814	78,316
2018	Jan 2018	5,276	1,784	7,060
	Feb 2018	4,933	1,644	6,577
	Mar 2018	5,212	1,727	6,939
	Apr 2018	5,275	1,601	6,876
	May 2018	5,920	1,836	7,756
	Jun 2018	4,948	1,615	6,563
	Jul 2018	4,011	1,308	5,319
	Aug 2018	4,102	1,408	5,510
	Sep 2018	4,748	1,634	6,382
	Oct 2018	5,790	2,011	7,801
	Nov 2018	4,973	1,620	6,593
	Dec 2018	4,891	1,527	6,418
	Total	60,079	19,715	79,794
2019	Jan 2019	5,443	1,858	7,301
	Feb 2019	4,811	1,628	6,439
	Mar 2019	5,677	1,824	7,501
	Apr 2019	5,313	1,630	6,943
	May 2019	5,853	1,781	7,634
	June 2019	4,874	1,509	6,383
	July 2019	4,277	1,309	5,586
	Aug 2019	4,068	1,306	5,374
	Sep 2019	5,315	1,551	6,866
	Oct 2019	5,968	1,926	7,894
	Total	51,599	16,322	67,921
Grand Total		340,057	108,849	448,906

¹Source of Data: NJ SPIRIT

²A CPS Report or a CWS Referral may include multiple children in a family, with one or more allegation or request for services. In these cases, each CPS Report or CWS Referral is counted once - the CPS Report or the CWS Referral is the unit of analysis rather than the child.

³Prior to January 2014, the number of CPS Reports and CWS Referrals was based on the type of assignment of the CPS Report or CWS Referral. Beginning in January 2014, the number of CPS Reports and CWS Referrals is based on the number of CPS Reports and CWS Referrals received.

Table 3: Source of CPS Reports and CWS Referrals

CPS Reports and CWS Referrals	Source	Oct 2018	Nov 2018	Dec 2018	Jan 2019	Feb 2019	Mar 2019	Apr 2019	May 2019	June 2019	July 2019	Aug 2019	Sep 2019	Oct 2019		13 Month Total	
	School Staff	2,256	1,769	1,643	2,151	1,887	2,388	1,732	2,167	1,163	211	90	1,479	2,314	29%	21,250	24%
Healthcare Provider	1,018	954	891	999	858	977	955	1,033	970	964	917	963	1,059	13%	12,558	14%	
Law Enforcement	1,188	1,186	1,186	1,131	1,156	1,290	1,329	1,409	1,437	1,416	1,320	1,432	1,425	18%	16,905	19%	
Government Agency	521	430	387	417	345	374	392	477	387	448	391	417	457	6%	5,443	6%	
Parent	563	491	481	512	419	513	509	525	492	549	583	534	529	7%	6,700	8%	
Relative/Friend/Neighbor	452	370	393	447	359	399	456	400	418	482	479	505	427	5%	5,587	6%	
Anonymous	769	576	609	656	586	686	641	715	629	493	544	615	674	9%	8,193	9%	
CP&P	131	99	109	125	118	130	107	102	104	126	129	102	110	1%	1,492	2%	
Court/Legal	171	101	132	190	155	162	182	176	158	189	223	180	207	3%	2,226	3%	
Community Group/Individual	301	264	234	274	234	253	257	257	242	279	268	257	310	4%	3,430	4%	
Facility Staff (incl Correctional Facility)	97	86	79	88	57	85	88	81	76	88	92	74	79	1%	1,070	1%	
Child (Self)	51	30	35	23	29	25	32	37	37	50	47	45	34	0%	475	1%	
Other	262	218	226	270	219	204	245	244	248	277	272	249	250	3%	3,184	4%	
Daycare/Babysitter	21	19	13	18	17	15	18	11	22	14	19	14	19	0%	220	0%	
Total	7,801	6,593	6,418	7,301	6,439	7,501	7,501	7,634	6,383	6,383	6,383	6,866	7,894		88,733		

Table 4: Monthly Count of CPS Reports and CWS Referrals Assigned to Counties

County	Oct 2018	Nov 2018	Dec 2018	Jan 2019	Feb 2019	Mar 2019	Apr 2019	May 2019	June 2019	July 2019	Aug 2019	Sep 2019	Oct 2019	Average Number of Assignments Last 13 Months	Sep 19 to Oct 19 Numerical Difference
Atlantic	280	264	243	285	274	296	273	318	279	235	235	282	302	274	115%
Bergen	467	412	377	460	369	460	439	486	376	273	285	402	471	406	69
Burlington	348	313	318	338	361	337	330	351	288	262	264	352	385	327	33
Camden	606	515	469	577	485	619	559	588	484	442	422	572	625	536	53
Cape May	87	73	68	103	83	74	88	70	82	96	80	112	105	86	-7
Cumberland	232	204	200	218	191	235	202	219	214	187	158	206	256	209	50
Essex	859	712	694	798	723	795	740	851	693	604	622	713	848	742	135
Gloucester	260	235	233	302	250	272	296	341	265	250	232	259	279	267	20
Hudson	540	420	425	475	410	518	457	510	422	346	307	400	535	443	135
Hunterdon	75	58	59	48	52	71	50	67	64	42	48	74	60	59	-14
Mercer	365	298	283	298	301	331	295	292	298	264	265	276	337	300	61
Middlesex	563	426	472	527	476	505	449	505	412	337	357	489	558	467	69
Monmouth	426	380	352	433	333	424	359	424	376	295	287	378	437	377	59
Morris	292	224	242	264	215	244	241	303	200	181	187	266	255	240	-11
Ocean	482	450	408	428	382	440	460	459	386	385	337	428	525	428	97
Passaic	567	461	438	482	394	527	485	535	431	356	327	443	519	459	76
Salem	90	72	70	97	71	75	91	77	57	83	85	92	98	81	6
Somerset	200	181	165	160	158	196	158	167	155	155	114	180	202	169	22
Sussex	120	81	97	100	122	116	94	114	104	83	107	125	129	107	4
Union	396	351	343	401	359	405	353	398	317	276	252	321	400	352	79
Warren	105	93	104	89	73	118	131	104	102	82	88	97	96	99	-1
County Subtotals	7,360	6,223	6,060	6,883	6,082	7,058	6,550	7,179	6,005	5,234	5,059	6,467	7,422	6,429	955
Central Region IAIU	67	63	47	61	47	61	66	82	57	58	41	60	70	60	10
Metro Region IAIU	65	61	51	55	47	62	45	64	41	36	42	43	80	53	37
Northern Region IAIU	71	70	64	58	74	83	57	89	64	53	37	68	77	67	9
Southern Region IAIU	100	58	71	92	70	85	90	90	69	66	57	83	75	77	-8
IAIU Subtotals	303	252	233	266	238	291	258	325	231	213	177	254	302	257	48
Unable to Determine¹	135	117	121	149	119	151	132	127	147	138	138	145	170	138	25
Other Offices	3	1	4	3	0	1	3	3	0	1	0	0	0	1	0
Grand Total	7,801	6,593	6,418	7,301	6,439	7,501	6,943	7,634	6,383	5,586	5,374	6,866	7,894	6,826	1028

¹CPS Reports or CWS Referrals not assigned to an office through the Assignment Designee, but were assigned to an office for an assessment or investigation.

Table 5: Monthly Count of CPS Reports and CWS Referrals Assigned to CP&P Local Offices

County	Local Office	Type of Referral													Total	
			Oct 2018	Nov 2018	Dec 2018	Jan 2019	Feb 2019	Mar 2019	Apr 2019	May 2019	June 2019	July 2019	Aug 2019	Sep 2019		Oct 2019
ATLANTIC	Atlantic East	CPS	132	139	107	140	128	148	123	150	126	110	102	127	134	1,666
		CWS	50	40	43	32	33	42	36	41	34	34	30	46	38	499
		Total	182	179	150	172	161	190	159	191	160	144	132	173	172	2,165
	Atlantic West	CPS	80	73	72	86	84	81	88	111	86	69	77	76	86	1,069
		CWS	18	12	21	27	29	25	26	16	33	22	26	33	44	332
		Total	98	85	93	113	113	106	114	127	119	91	103	109	130	1,401
	County Totals	CPS	212	212	179	226	212	229	211	261	212	179	179	203	220	2,735
		CWS	68	52	64	59	62	67	62	57	67	56	56	79	82	831
		Total	280	264	243	285	274	296	273	318	279	235	235	282	302	3,566
BERGEN	Bergen Central	CPS	147	103	119	137	98	129	134	160	122	91	98	131	150	1,619
		CWS	60	51	39	67	56	45	55	64	36	23	31	46	57	630
		Total	207	154	158	204	154	174	189	224	158	114	129	177	207	2,249
	Bergen South	CPS	187	188	155	173	139	207	173	184	155	121	117	166	192	2,157
		CWS	73	70	64	83	76	79	77	78	63	38	39	59	72	871
		Total	260	258	219	256	215	286	250	262	218	159	156	225	264	3,028
	County Totals	CPS	334	291	274	310	237	336	307	344	277	212	215	297	342	3,776
		CWS	133	121	103	150	132	124	132	142	99	61	70	105	129	1,501
		Total	467	412	377	460	369	460	439	486	376	273	285	402	471	5,277
BURLINGTON	Burlington East	CPS	131	124	128	132	150	128	142	119	117	127	108	126	145	1,677
		CWS	53	38	38	41	41	43	46	45	34	21	38	55	39	532
		Total	184	162	166	173	191	171	188	164	151	148	146	181	184	2,209
	Burlington West	CPS	124	121	123	123	133	122	109	137	96	85	92	133	153	1,551
		CWS	40	30	29	42	37	44	33	50	41	29	26	38	48	487
		Total	164	151	152	165	170	166	142	187	137	114	118	171	201	2,038
	County Totals	CPS	255	245	251	255	283	250	251	256	213	212	200	259	298	3,228
		CWS	93	68	67	83	78	87	79	95	75	50	64	93	87	1,019
		Total	348	313	318	338	361	337	330	351	288	262	264	352	385	4,247
CAMDEN	Camden Central	CPS	116	110	104	137	98	146	118	104	112	87	106	127	122	1,487
		CWS	41	27	27	31	34	34	33	33	27	16	22	27	40	392
		Total	157	137	131	168	132	180	151	137	139	103	128	154	162	1,879
	Camden East	CPS	110	103	81	95	83	123	107	122	91	83	70	103	111	1,282
		CWS	39	29	26	35	21	38	31	34	27	36	15	34	30	395
		Total	149	132	107	130	104	161	138	156	118	119	85	137	141	1,677
	Camden North	CPS	119	94	96	110	111	110	121	117	93	77	84	111	135	1,378
		CWS	42	31	19	36	42	43	30	34	26	32	25	47	40	447
		Total	161	125	115	146	153	153	151	151	119	109	109	158	175	1,825
	Camden South	CPS	108	89	91	103	73	97	95	118	77	83	68	91	113	1,206
		CWS	31	32	25	30	23	28	24	26	31	28	32	32	34	376
		Total	139	121	116	133	96	125	119	144	108	111	100	123	147	1,582
	County Totals	CPS	453	396	372	445	365	476	441	461	373	330	328	432	481	5,353
		CWS	153	119	97	132	120	143	118	127	111	112	94	140	144	1,610
		Total	606	515	469	577	485	619	559	588	484	442	422	572	625	6,963
CAPE MAY	Cape May	CPS	64	56	60	79	63	58	75	57	63	72	67	87	75	876
		CWS	23	17	8	24	20	16	13	13	19	24	13	25	30	245
		Total	87	73	68	103	83	74	88	70	82	96	80	112	105	1,121
	County Totals	CPS	64	56	60	79	63	58	75	57	63	72	67	87	75	876
		Total	87	73	68	103	83	74	88	70	82	96	80	112	105	1,121
CUMBERLAND	Cumberland East	CPS	55	47	45	43	54	68	58	49	50	45	50	51	59	674
		CWS	18	15	13	17	9	13	12	25	24	12	13	9	16	196
		Total	73	62	58	60	63	81	70	74	74	57	63	60	75	870
	Cumberland West	CPS	116	106	116	119	100	124	103	116	118	101	75	118	139	1,451
		CWS	43	36	26	39	28	30	29	29	22	29	20	28	42	401
		Total	159	142	142	158	128	154	132	145	140	130	95	146	181	1,852
	County Totals	CPS	171	153	161	162	154	192	161	165	168	146	125	169	198	2,125
		CWS	61	51	39	56	37	43	41	54	46	41	33	37	58	597
		Total	232	204	200	218	191	235	202	219	214	187	158	206	256	2,722

Table 5: Monthly Count of CPS Reports and CWS Referrals Assigned to CP&P Local Offices

County	Local Office	Type of Referral													Total	
			Oct 2018	Nov 2018	Dec 2018	Jan 2019	Feb 2019	Mar 2019	Apr 2019	May 2019	June 2019	July 2019	Aug 2019	Sep 2019		Oct 2019
ESSEX	Essex Central	CPS	97	103	90	107	97	107	89	102	93	94	88	111	121	1,299
		CWS	35	35	26	37	33	42	26	34	36	36	25	32	48	445
		Total	132	138	116	144	130	149	115	136	129	130	113	143	169	1,744
	Essex North	CPS	82	74	65	72	76	73	76	85	62	53	58	65	79	920
		CWS	31	25	20	32	25	24	21	29	32	17	31	27	24	338
		Total	113	99	85	104	101	97	97	114	94	70	89	92	103	1,258
	Essex South	CPS	80	70	77	86	76	94	90	94	71	48	46	66	66	964
		CWS	44	24	20	27	46	35	39	32	23	15	26	20	35	386
		Total	124	94	97	113	122	129	129	126	94	63	72	86	101	1,350
	Newark Center City	CPS	123	91	98	103	96	89	96	128	85	86	95	101	118	1309
		CWS	44	36	25	38	32	33	31	34	31	27	23	36	35	425
		Total	167	127	123	141	128	122	127	162	116	113	118	137	153	1,734
	Newark Northeast	CPS	117	105	101	111	83	112	104	118	89	84	77	94	116	1311
		CWS	58	30	24	28	26	35	38	29	25	29	22	28	35	407
Total		175	135	125	139	109	147	142	147	114	113	99	122	151	1,718	
Newark South	CPS	111	92	102	118	103	116	98	121	118	85	90	104	134	1392	
	CWS	37	27	46	39	30	35	32	45	28	30	41	29	37	456	
	Total	148	119	148	157	133	151	130	166	146	115	131	133	171	1,848	
County Totals	CPS	610	535	533	597	531	591	553	648	518	450	454	541	634	7195	
	CWS	249	177	161	201	192	204	187	203	175	154	168	172	214	2457	
	Total	859	712	694	798	723	795	740	851	693	604	622	713	848	9,652	
GLOUCESTER	Gloucester East	CPS	104	85	70	108	88	104	101	134	114	80	92	98	109	1287
		CWS	41	25	30	29	28	29	42	33	23	26	21	19	25	371
		Total	145	110	100	137	116	133	143	167	137	106	113	117	134	1,658
	Gloucester West	CPS	92	95	105	130	101	112	129	139	105	115	85	120	114	1442
		CWS	23	30	28	35	33	27	24	35	23	29	34	22	31	374
		Total	115	125	133	165	134	139	153	174	128	144	119	142	145	1,816
	County Totals	CPS	196	180	175	238	189	216	230	273	219	195	177	218	223	2729
		CWS	64	55	58	64	61	56	66	68	46	55	55	41	56	745
Total		260	235	233	302	250	272	296	341	265	250	232	259	279	3,474	
HUDSON	Hudson Central	CPS	141	91	117	107	104	129	113	116	101	102	94	90	122	1427
		CWS	43	37	41	47	37	46	35	20	19	32	22	35	41	455
		Total	184	128	158	154	141	175	148	136	120	134	116	125	163	1,882
	Hudson North	CPS	92	62	72	87	67	81	77	95	65	57	36	78	97	966
		CWS	33	28	27	40	28	28	30	33	26	21	22	20	29	365
		Total	125	90	99	127	95	109	107	128	91	78	58	98	126	1,331
	Hudson South	CPS	60	48	48	55	47	66	52	63	51	37	45	46	65	683
		CWS	23	35	22	15	22	25	21	44	36	14	14	13	25	309
		Total	83	83	70	70	69	91	73	107	87	51	59	59	90	992
	Hudson West	CPS	94	87	72	87	69	93	97	105	102	58	53	86	110	1113
		CWS	54	32	26	37	36	50	32	34	22	25	21	32	46	447
		Total	148	119	98	124	105	143	129	139	124	83	74	118	156	1,560
	County Totals	CPS	387	288	309	336	287	369	339	379	319	254	228	300	394	4189
		CWS	153	132	116	139	123	149	118	131	103	92	79	100	141	1576
Total		540	420	425	475	410	518	457	510	422	346	307	400	535	5,765	
HUNTERDON	Hunterdon	CPS	56	44	47	33	33	52	42	53	47	31	33	56	46	573
		CWS	19	14	12	15	19	19	8	14	17	11	15	18	14	195
		Total	75	58	59	48	52	71	50	67	64	42	48	74	60	768
	County Totals	CPS	56	44	47	33	33	52	42	53	47	31	33	56	46	573
		CWS	19	14	12	15	19	19	8	14	17	11	15	18	14	195
Total	75	58	59	48	52	71	50	67	64	42	48	74	60	768		
MERCER	Mercer North	CPS	139	113	110	117	114	125	110	114	95	81	90	113	100	1421
		CWS	57	50	31	39	43	41	44	45	46	45	24	30	52	547
		Total	196	163	141	156	157	166	154	159	141	126	114	143	152	1,968
	Mercer South	CPS	125	95	109	101	104	125	107	97	122	112	116	107	140	1460
		CWS	44	40	33	41	40	40	34	36	35	26	35	26	45	475
		Total	169	135	142	142	144	165	141	133	157	138	151	133	185	1,935
	County Totals	CPS	264	208	219	218	218	250	217	211	217	193	206	220	240	2881
CWS		101	90	64	80	83	81	78	81	81	71	59	56	97	1022	
Total	365	298	283	298	301	331	295	292	298	264	265	276	337	3,903		

Table 5: Monthly Count of CPS Reports and CWS Referrals Assigned to CP&P Local Offices

County	Local Office	Type of Referral														Total
			Oct 2018	Nov 2018	Dec 2018	Jan 2019	Feb 2019	Mar 2019	Apr 2019	May 2019	June 2019	July 2019	Aug 2019	Sep 2019	Oct 2019	
MIDDLESEX	Middlesex Central	CPS	116	93	102	125	113	126	91	110	85	83	77	103	129	1353
		CWS	31	28	33	33	38	25	36	37	23	25	24	26	30	389
		Total	147	121	135	158	151	151	127	147	108	108	101	129	159	1742
	Middlesex Coastal	CPS	161	110	120	148	130	127	133	149	113	88	115	136	146	1676
		CWS	49	39	42	49	43	46	34	39	37	26	32	37	49	522
		Total	210	149	162	197	173	173	167	188	150	114	147	173	195	2198
	Middlesex West	CPS	168	108	138	126	116	132	116	125	110	80	76	136	145	1576
		CWS	38	48	37	46	36	49	39	45	44	35	33	51	59	560
		Total	206	156	175	172	152	181	155	170	154	115	109	187	204	2136
	County Totals	CPS	445	311	360	399	359	385	340	384	308	251	268	375	420	4605
		CWS	118	115	112	128	117	120	109	121	104	86	89	114	138	1471
		Total	563	426	472	527	476	505	449	505	412	337	357	489	558	6076
MONMOUTH	Monmouth North	CPS	165	133	158	190	128	181	147	203	142	119	120	172	182	2040
		CWS	62	42	49	64	49	57	49	63	55	42	39	37	56	664
		Total	227	175	207	254	177	238	196	266	197	161	159	209	238	2704
	Monmouth South	CPS	149	151	100	145	114	138	120	118	136	110	101	127	152	1661
		CWS	50	54	45	34	42	48	43	40	43	24	27	42	47	539
		Total	199	205	145	179	156	186	163	158	179	134	128	169	199	2200
	County Totals	CPS	314	284	258	335	242	319	267	321	278	229	221	299	334	3701
		CWS	112	96	94	98	91	105	92	103	98	66	66	79	103	1203
		Total	426	380	352	433	333	424	359	424	376	295	287	378	437	4904
	MORRIS	Morris East	CPS	100	84	91	84	75	74	94	107	69	63	65	84	85
CWS			42	19	37	49	22	21	21	36	16	21	16	33	36	369
Total			142	103	128	133	97	95	115	143	85	84	81	117	121	1444
Morris West		CPS	118	92	89	89	82	106	84	125	87	80	72	116	99	1239
		CWS	32	29	25	42	36	43	42	35	28	17	34	33	35	431
		Total	150	121	114	131	118	149	126	160	115	97	106	149	134	1670
County Totals		CPS	218	176	180	173	157	180	178	232	156	143	137	200	184	2314
		CWS	74	48	62	91	58	64	63	71	44	38	50	66	71	800
	Total	292	224	242	264	215	244	241	303	200	181	187	266	255	3114	
OCEAN	Ocean North	CPS	203	178	163	165	157	179	209	219	148	149	134	189	207	2300
		CWS	68	60	46	65	48	53	53	63	40	48	41	55	85	725
		Total	271	238	209	230	205	232	262	282	188	197	175	244	292	3025
	Ocean South	CPS	166	170	160	147	147	163	148	140	157	152	121	146	174	1991
		CWS	45	42	39	51	30	45	50	37	41	36	41	38	59	554
		Total	211	212	199	198	177	208	198	177	198	188	162	184	233	2545
	County Totals	CPS	369	348	323	312	304	342	357	359	305	301	255	335	381	4291
		CWS	113	102	85	116	78	98	103	100	81	84	82	93	144	1279
		Total	482	450	408	428	382	440	460	459	386	385	337	428	525	5570
PASSAIC	Passaic Central	CPS	207	177	157	192	160	181	195	198	157	132	119	183	205	2263
		CWS	93	66	68	66	59	94	71	79	55	35	36	65	73	860
		Total	300	243	225	258	219	275	266	277	212	167	155	248	278	3123
	Passaic North	CPS	189	158	146	148	124	181	172	188	160	139	121	154	182	2062
		CWS	78	60	67	76	51	71	47	70	59	50	51	41	59	780
		Total	267	218	213	224	175	252	219	258	219	189	172	195	241	2842
	County Totals	CPS	396	335	303	340	284	362	367	386	317	271	240	337	387	4325
		CWS	171	126	135	142	110	165	118	149	114	85	87	106	132	1640
Total		567	461	438	482	394	527	485	535	431	356	327	443	519	5965	
SALEM	Salem	CPS	68	53	53	77	50	64	71	63	40	63	62	74	82	820
		CWS	22	19	17	20	21	11	20	14	17	20	23	18	16	238
		Total	90	72	70	97	71	75	91	77	57	83	85	92	98	1058
	County Totals	CPS	68	53	53	77	50	64	71	63	40	63	62	74	82	820
		Total	90	72	70	97	71	75	91	77	57	83	85	92	98	1058
SOMERSET	Somerset	CPS	153	137	128	122	122	161	116	128	121	117	84	140	158	1687
		CWS	47	44	37	38	36	35	42	39	34	38	30	40	44	504
		Total	200	181	165	160	158	196	158	167	155	155	114	180	202	2191
	County Totals	CPS	153	137	128	122	122	161	116	128	121	117	84	140	158	1687
		Total	200	181	165	160	158	196	158	167	155	155	114	180	202	2191

Table 5: Monthly Count of CPS Reports and CWS Referrals Assigned to CP&P Local Offices

County	Local Office	Type of Referral														Total
			Oct 2018	Nov 2018	Dec 2018	Jan 2019	Feb 2019	Mar 2019	Apr 2019	May 2019	June 2019	July 2019	Aug 2019	Sep 2019	Oct 2019	
SUSSEX	Sussex	CPS	90	64	67	77	88	87	75	81	77	64	84	104	97	1055
		CWS	30	17	30	23	34	29	19	33	27	19	23	21	32	337
		Total	120	81	97	100	122	116	94	114	104	83	107	125	129	1392
	County Totals	CPS	90	64	67	77	88	87	75	81	77	64	84	104	97	1055
		CWS	30	17	30	23	34	29	19	33	27	19	23	21	32	337
UNION	Union Central	CPS	98	85	81	104	87	99	100	95	95	70	75	82	91	1162
		CWS	33	26	34	43	27	32	31	29	25	19	17	26	31	373
		Total	131	111	115	147	114	131	131	124	120	89	92	108	122	1535
	Union East	CPS	103	93	94	94	104	98	94	104	80	76	63	68	89	1160
		CWS	36	29	26	35	38	45	22	30	25	21	22	29	40	398
		Total	139	122	120	129	142	143	116	134	105	97	85	97	129	1558
	Union West	CPS	84	88	83	98	79	98	76	103	71	68	55	94	112	1109
		CWS	42	30	25	27	24	33	30	37	21	22	20	22	37	370
		Total	126	118	108	125	103	131	106	140	92	90	75	116	149	1479
	County Totals	CPS	285	266	258	296	270	295	270	302	246	214	193	244	292	3431
		CWS	111	85	85	105	89	110	83	96	71	62	59	77	108	1141
		Total	396	351	343	401	359	405	353	398	317	276	252	321	400	4572
	WARREN	Warren	CPS	78	71	77	61	54	88	97	81	76	62	69	79	72
CWS			27	22	27	28	19	30	34	23	26	20	19	18	24	317
Total			105	93	104	89	73	118	131	104	102	82	88	97	96	1282
County Totals		CPS	78	71	77	61	54	88	97	81	76	62	69	79	72	965
		CWS	27	22	27	28	19	30	34	23	26	20	19	18	24	317
County Referral Total	CPS	5,418	4,653	4,587	5,091	4,502	5,302	4,965	5,445	4,550	3,989	3,825	4,969	5,558	62,854	
	CWS	1,942	1,570	1,473	1,792	1,580	1,756	1,585	1,734	1,455	1,245	1,234	1,498	1,864	20,728	
County Referral Total	Total	7,360	6,223	6,060	6,883	6,082	7,058	6,550	7,179	6,005	5,234	5,059	6,467	7,422	83,582	
Central Region IAIU	CPS	67	63	47	61	47	61	66	82	57	58	41	60	70	780	
	CWS	0	0	0	0	0	0	0	0	0	0	0	0	0	0	
	Total	67	63	47	61	47	61	66	82	57	58	41	60	70	780	
Metro Region IAIU	CPS	65	61	51	55	47	62	45	64	41	36	42	43	80	692	
	CWS	0	0	0	0	0	0	0	0	0	0	0	0	0	0	
	Total	65	61	51	55	47	62	45	64	41	36	42	43	80	692	
Northern Region IAIU	CPS	71	70	64	58	74	83	57	89	64	53	37	68	77	865	
	CWS	0	0	0	0	0	0	0	0	0	0	0	0	0	0	
	Total	71	70	64	58	74	83	57	89	64	53	37	68	77	865	
Southern Region IAIU	CPS	100	58	71	92	70	85	90	90	69	66	57	83	75	1,006	
	CWS	0	0	0	0	0	0	0	0	0	0	0	0	0	0	
	Total	100	58	71	92	70	85	90	90	69	66	57	83	75	1,006	
IAIU CPS Subtotal	CPS	303	252	233	266	238	291	258	325	231	213	177	254	302	3,343	
IAIU CWS Subtotal	CWS	0	0	0	0	0	0	0	0	0	0	0	0	0	0	
IAIU Subtotal	Total	303	252	233	266	238	291	258	325	231	213	177	254	302	3,343	
County and IAIU CPS Subtotal	CPS	5,721	4,905	4,820	5,357	4,740	5,593	5,223	5,770	4,781	4,202	4,002	5,223	5,860	66,197	
County and IAIU CWS Subtotal	CWS	1,942	1,570	1,473	1,792	1,580	1,756	1,585	1,734	1,455	1,245	1,234	1,498	1,864	20,728	
Unable to Determine⁽¹⁾	Total	135	117	121	149	119	151	132	127	147	138	138	145	170	1,789	
Other Offices	Total	3	1	4	3	0	1	3	3	0	1	0	0	0	19	
Grand Total	Total	7,801	6,593	6,418	7,301	6,439	7,501	6,943	7,634	6,383	5,586	5,374	6,866	7,894	88,733	

⁽¹⁾CPS Reports or CWS Referrals not assigned to an office through the Assignment Designee, but were assigned to an office for an assessment or investigation.