



Child Protection and Permanency

Monthly Screening and Investigation Report October 2020

Christine Norbut Beyer, MSW
Commissioner



Table of Contents

Table 1: NJ State Central Registry Activity: Monthly Child Abuse and Neglect Hotline Calls, Intakes and Assignments to Child Protection & Permanency (CP&P) Offices

Chart 1: CP&P Annual Trends in Child Protection Services (CPS) Reports and Child Welfare Services (CWS) Referrals

Table 2: Assignments to CP&P Offices: CPS Reports and CWS Referrals

Table 3: Source of CPS Reports and CWS Referrals

Table 4: Monthly Count of CPS Reports and CWS Referrals Assigned to Counties

Table 5: Monthly Count of CPS Reports and CWS Referrals Assigned to CP&P Local Offices

Table 1: NJ State Central Registry Activity: Monthly Child Abuse and Neglect Hotline Calls, Intakes and Assignments to CP&P Offices^{1,2,7}

2019-2020	Hotline Call Activity				Intakes Recorded in NJ SPIRIT ^{6,8}														Assignments to CP&P Offices				
	Total Calls to SCR ³	Abandon Calls ⁴	Average Time to Answer (seconds)	Resulting NJS Intakes ⁵	CPS Reports		CWS Referrals		No Action Required (NAR)		Related Information (RI)		Information & Referral (I&R)		Information Only (IO)		Unusual Incident (UIRS)		CPS Reports		CWS Referrals		Total
					n	%	n	%	n	%	n	%	n	%	n	%	n	%	n	%	n	%	
October 2019	15,981	1,270	95	16,503	5,968	36.2%	1,923	11.7%	260	1.6%	4,039	24.5%	1,959	11.9%	2,354	14.3%	0	14.3%	5,968	75.6%	1,926	24.4%	7,894
November 2019	12,937	1,128	92	14,799	4,991	33.7%	1,434	9.7%	205	1.4%	3,681	24.9%	1,741	11.8%	2,747	18.6%	0	18.6%	4,991	77.7%	1,432	22.3%	6,423
December 2019	12,832	1,147	102	13,166	4,855	36.9%	1,432	10.9%	203	1.5%	3,204	24.3%	1,478	11.2%	1,994	15.1%	0	15.1%	4,855	77.2%	1,434	22.8%	6,289
January 2020	15,893	2,070	141	15,573	5,715	36.7%	1,841	11.8%	227	1.5%	3,717	23.9%	1,976	12.7%	2,097	13.5%	0	13.5%	5,715	75.6%	1,842	24.4%	7,557
February 2020	14,714	1,744	150	14,684	5,380	36.6%	1,625	11.1%	226	1.5%	3,605	24.6%	1,854	12.6%	1,994	13.6%	0	0.0%	5,380	76.8%	1,624	23.2%	7,004
March 2020	12,263	1,262	11	12,398	4,171	33.6%	1,063	8.6%	199	1.6%	3,075	24.8%	1,885	15.2%	2,005	16.2%	5	0.0%	4,172	79.7%	1,065	20.3%	5,237
April 2020	7,500	548	76	7,917	2,149	27.1%	407	5.1%	196	2.5%	1,852	23.4%	1,866	23.6%	1,447	18.3%	0	0.0%	2,149	84.1%	407	15.9%	2,556
May 2020	9,654	1,808	249	9,402	2,897	30.8%	537	5.7%	137	1.5%	2,342	24.9%	1,974	21.0%	1,515	16.1%	0	0.0%	2,897	84.4%	537	15.6%	3,434
June 2020	10,871	3,782	305	9,131	3,045	33.3%	636	7.0%	133	1.5%	2,281	25.0%	1,554	17.0%	1,482	16.2%	0	0.0%	3,045	82.7%	636	17.3%	3,681
July 2020	11,649	1,628	237	11,499	3,628	31.6%	738	6.4%	145	1.3%	2,892	25.2%	1,815	15.8%	2,281	19.8%	0	0.0%	3,628	83.1%	738	16.9%	4,366
August 2020	11,248	1,493	232	11,204	3,569	31.9%	821	7.3%	164	1.5%	2,993	26.7%	1,649	14.7%	2,008	17.9%	0	0.0%	3,569	81.3%	822	18.7%	4,391
September 2020	12,277	1,495	203	12,505	4,153	33.2%	1,031	8.2%	246	2.0%	3,097	24.8%	2,046	16.4%	1,932	15.4%	0	0.0%	4,153	80.1%	1,030	19.9%	5,183
October 2020	13,118	1,258	183	13,320	4,257	32.0%	867	6.5%	191	1.4%	3,220	24.2%	2,709	20.3%	2,076	15.6%	0	0.0%	4,257	83.1%	868	16.9%	5,125
	12,380	1,587	160	12,469	4,214	33.8%	1,104	8.9%	195	1.6%	3,077	24.7%	1,885	15.1%	1,995	16.0%	0	0.0%	4,214	79.2%	1,105	20.8%	5,318
Overall Total	160,937	20,633		162,101	54,778		14,355		2,532		39,998		24,506		25,932		5		54,779	79.2%	14,361	20.8%	69,140

¹Comes from three distinct sources: (1) the Automatic Call Distribution (ACD) phone system; which keeps a count of the number of calls and call routing; (2) Monthly NJSpirit Intakes; which record decision making on calls received by hotline screeners, and (3) NJSpirit extracts of assigned CWS Referrals and CPS Reports.

²The number of Intakes, CPS Reports, and CWS Referrals are based on an extract from NJSpirit.

Data extracted by the Office of Research, Evaluation, and Reporting on **November 09, 2020** includes all Intakes, CPS Reports, and CWS Referrals received from **October 01, 2020** through **October 31, 2020**.

³The number calls received through the ACD System that were directed to a screener from any call-in phone number.

⁴The number of calls received through the ACD System that are abandoned either while waiting in queue or while ringing.

⁵The number of Intakes entered in NJSpirit from the number of calls received.

⁶The number of Intakes recorded in NJSpirit, by type of Intake. There is not a one-to-one relationship between an ACD call and an Intake; multiple calls to State Central Registry (SCR) may result in a single Intake, or one call may result in multiple Intakes.

⁷Intake: The process of documenting: a report of alleged abuse or neglect of a child (CPS); a request for services on behalf of a child, or a referral of a child for services (CWS); a call in which the caller provides additional or clarifying information about a current service case or active investigation (RI); informing a caller of, or referring a caller to, services available from other private or public sources (I&R); a call that requires no action by CP&P (NAR); or a response to a simple inquiry (IO).

CP&P Annual Trends in CPS Reports and CWS Referrals

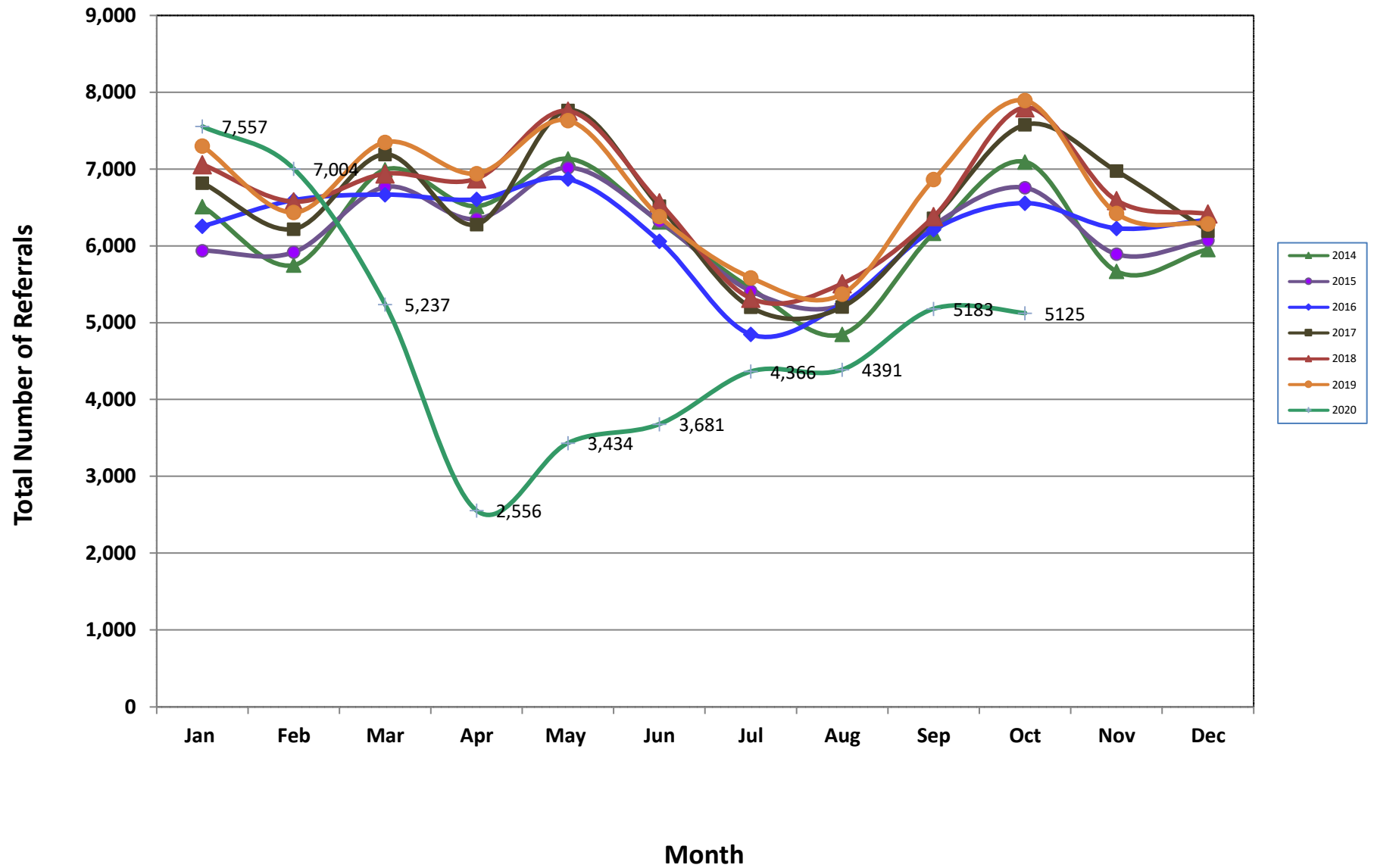


Table 2: Assignments to CP&P Offices: CPS Reports and CWS Referrals¹

Intake Date ³		CPS Reports ²	CWS Referrals ²	Total Assignments ²
2015	Jan 2015	4,549	1,391	5,940
	Feb 2015	4,574	1,345	5,919
	Mar 2015	5,187	1,580	6,767
	Apr 2015	4,967	1,384	6,351
	May 2015	5,457	1,561	7,018
	Jun 2015	4,887	1,436	6,323
	Jul 2015	4,140	1,273	5,413
	Aug 2015	3,978	1,256	5,234
	Sep 2015	4,776	1,495	6,271
	Oct 2015	5,139	1,619	6,758
	Nov 2015	4,417	1,477	5,894
	Dec 2015	4,530	1,544	6,074
	Total	56,601	17,361	73,962
2016	Jan 2016	4,686	1,571	6,257
	Feb 2016	4,974	1,622	6,596
	Mar 2016	5,000	1,669	6,669
	Apr 2016	5,065	1,542	6,607
	May 2016	5,238	1,633	6,871
	Jun 2016	4,602	1,461	6,063
	Jul 2016	3,663	1,187	4,850
	Aug 2016	3,941	1,307	5,248
	Sep 2016	4,654	1,559	6,213
	Oct 2016	4,935	1,622	6,557
	Nov 2016	4,677	1,552	6,229
	Dec 2016	4,762	1,580	6,342
	Total	56,197	18,305	74,502
2017	Jan 2017	5,111	1,708	6,819
	Feb 2017	4,716	1,504	6,220
	Mar 2017	5,349	1,843	7,192
	Apr 2017	4,790	1,490	6,280
	May 2017	5,847	1,919	7,766
	Jun 2017	4,853	1,665	6,518
	Jul 2017	3,814	1,389	5,203
	Aug 2017	3,866	1,340	5,206
	Sep 2017	4,719	1,643	6,362
	Oct 2017	5,613	1,966	7,579
	Nov 2017	5,223	1,753	6,976
	Dec 2017	4,601	1,594	6,195
	Total	58,502	19,814	78,316

Table 2: Assignments to CP&P Offices: CPS Reports and CWS Referrals¹

Intake Date ³		CPS Reports ²	CWS Referrals ²	Total Assignments ²
2018	Jan 2018	5,276	1,784	7,060
	Feb 2018	4,933	1,644	6,577
	Mar 2018	5,212	1,727	6,939
	Apr 2018	5,275	1,601	6,876
	May 2018	5,920	1,836	7,756
	Jun 2018	4,948	1,615	6,563
	Jul 2018	4,011	1,308	5,319
	Aug 2018	4,102	1,408	5,510
	Sep 2018	4,748	1,634	6,382
	Oct 2018	5,790	2,011	7,801
	Nov 2018	4,973	1,620	6,593
	Dec 2018	4,891	1,527	6,418
	Total	60,079	19,715	79,794
2019	Jan 2019	5,443	1,858	7,301
	Feb 2019	4,811	1,628	6,439
	Mar 2019	5,677	1,824	7,501
	Apr 2019	5,313	1,630	6,943
	May 2019	5,853	1,781	7,634
	Jun 2019	4,874	1,509	6,383
	Jul 2019	4,277	1,309	5,586
	Aug 2019	4,068	1,306	5,374
	Sep 2019	5,315	1,551	6,866
	Oct 2019	5,968	1,926	7,894
	Nov 2019	4,991	1,432	6,423
	Dec 2019	4,855	1,434	6,289
	Total	61,445	1,434	6,289
2020	Jan 2020	5,715	1,842	7,557
	Feb 2020	5,380	1,624	7,004
	Mar 2020	4,172	1,065	5,237
	Apr 2020	2,149	407	2,556
	May 2020	2,897	537	3,434
	Jun 2020	3,045	636	3,681
	Jul 2020	3,628	738	4,366
	Aug 2020	3,569	822	4,391
	Sep 2020	4,153	1,030	5,183
	Oct 2020	4,257	868	5,125
	Total	38,965	9,569	48,534
Grand Total		331,789	103,952	435,741

Table 3: Source of CPS Reports and CWS Referrals

CPS Reports and CWS Referrals	Source	Oct 2019	Nov 2019	Dec 2019	Jan 2020	Feb 2020	Mar 2020	Apr 2020	May 2020	Jun 2020	Jul 2020	Aug 2020	Sep 2020	Oct 2020		13 Month Total	
	School Staff	2,314	1,703	1,562	2,327	2,148	1,188	143	210	119	70	63	565	809	16%	13,221	19%
	Healthcare Provider	1,059	886	923	990	937	760	499	656	775	784	819	882	869	17%	10,839	16%
	Law Enforcement	1,425	1,260	1,247	1,295	1,349	1,197	792	1,086	1,140	1,440	1,372	1,400	1,303	25%	16,306	24%
	Government Agency	457	343	367	452	342	240	134	198	238	274	304	295	278	5%	3,922	6%
	Parent	529	425	448	509	435	395	219	281	326	400	395	431	351	7%	5,144	7%
	Relative/Friend/Neighbor	427	384	388	411	334	345	232	296	326	392	343	424	337	7%	4,639	7%
	Anonymous	674	556	508	600	603	437	222	284	294	416	425	502	525	10%	6,046	9%
	CP&P	110	82	89	106	74	67	28	31	42	47	104	95	98	2%	973	1%
	Court/Legal	207	160	158	210	162	104	40	59	50	80	81	99	86	2%	1,496	2%
	Community Group/Individual	310	287	227	317	279	199	111	143	157	193	171	177	163	3%	2,734	4%
	Facility Staff (incl Correctional Facility)	79	67	83	79	93	40	21	41	43	63	61	72	68	1%	810	1%
	Child (Self)	34	27	37	28	21	25	7	17	17	25	29	31	29	1%	327	0%
	Other	250	235	242	213	210	227	105	130	149	175	219	204	198	4%	2,557	4%
Daycare/Babysitter	19	8	10	20	17	13	3	2	5	7	5	6	11	0%	126	0%	
Total	7,894	6,423	6,289	7,557	7,004	5,237	2,556	3,434	3,681	4,366	4,391	5,183	5,125		69,140		

Table 4: Monthly Count of CPS Reports and CWS Referrals Assigned to Counties

County														Average Number of Assignments Last 13 Months	Sep 20 to Oct 20 Numerical Difference
	Oct 2019	Nov 2019	Dec 2019	Jan 2020	Feb 2020	Mar 2020	Apr 2020	May 2020	Jun 2020	Jul 2020	Aug 2020	Sep 2020	Oct 2020		
Atlantic	302	258	261	292	298	244	121	161	180	214	195	243	256	233	13
Bergen	471	423	375	457	418	281	145	189	194	232	233	300	319	311	19
Burlington	385	305	285	383	368	256	133	181	185	231	237	271	278	269	7
Camden	625	523	508	603	581	437	216	305	325	362	345	433	443	439	10
Cape May	105	78	78	85	58	70	33	50	66	72	65	87	61	70	-26
Cumberland	256	216	221	238	216	171	96	116	130	145	131	165	167	174	2
Essex	848	703	651	790	735	525	249	364	366	440	486	538	500	553	-38
Gloucester	279	271	266	285	297	221	111	160	177	198	192	232	214	223	-18
Hudson	535	437	415	558	449	347	137	226	199	282	268	274	325	342	51
Hunterdon	60	63	66	67	48	39	22	30	24	33	40	42	38	44	-4
Mercer	337	290	267	344	279	210	106	144	164	197	187	234	207	228	-27
Middlesex	558	426	488	580	475	405	205	231	283	310	321	344	356	383	12
Monmouth	437	350	349	411	381	301	166	196	233	263	267	302	311	305	9
Morris	255	226	212	264	273	194	85	124	137	152	150	202	198	190	-4
Ocean	525	387	406	482	446	355	177	257	264	336	278	349	319	352	-30
Passaic	519	390	409	456	460	353	143	213	219	267	250	321	312	332	-9
Salem	98	78	69	79	82	75	35	44	53	56	48	56	68	65	12
Somerset	202	155	146	197	189	126	66	92	82	114	101	155	130	135	-25
Sussex	129	91	104	114	116	73	47	48	51	86	73	92	101	87	9
Union	400	345	327	383	383	246	137	147	190	181	225	261	253	268	-8
Warren	96	93	82	98	101	65	54	50	56	75	77	86	98	79	12
County Subtotals	7,422	6,108	5,985	7,166	6,653	4,994	2,484	3,328	3,578	4,246	4,169	4,987	4,954	5,083	-33
Central Region IAIU	70	49	48	67	64	34	10	6	23	17	17	26	23	35	-3
Metro Region IAIU	80	45	41	46	69	33	3	11	2	13	13	8	14	29	6
Northern Region IAIU	77	45	45	59	42	44	6	12	10	14	12	11	10	30	-1
Southern Region IAIU	75	59	62	82	61	51	12	18	20	23	30	25	28	42	3
IAIU Subtotals	302	198	196	254	236	162	31	47	55	67	72	70	75	136	5
¹ Unable to Determine	170	117	108	135	113	79	39	59	48	51	149	126	93	99	-33
Other Offices	0	0	0	2	2	2	2	0	0	2	1	0	3	1	3
Grand Total	7,894	6,423	6,289	7,557	7,004	5,237	2,556	3,434	3,681	4,366	4,391	5,183	5,125	5,318	-58

¹CPS Reports or CWS Referrals not assigned to an office through the Assignment Designee, but were assigned to an office for an assessment or investigation.



Table 5: Monthly Count of CPS Reports and CWS Referrals Assigned to CP&P Local Offices

County	Local Office	Type of Referral														Total
			Oct 2019	Nov 2019	Dec 2019	Jan 2020	Feb 2020	Mar 2020	Apr 2020	May 2020	Jun 2020	Jul 2020	Aug 2020	Sep 2020	Oct 2020	
ATLANTIC	Atlantic East	CPS	134	117	133	120	116	115	55	70	82	96	100	109	110	1,357
		CWS	38	26	31	33	55	30	9	16	25	24	22	32	17	358
		Total	172	143	164	153	171	145	64	86	107	120	122	141	127	1,715
	Atlantic West	CPS	86	99	79	101	95	82	50	64	57	75	64	88	107	1,047
		CWS	44	16	18	38	32	17	7	11	16	19	9	14	22	263
		Total	130	115	97	139	127	99	57	75	73	94	73	102	129	1,310
	County Totals	CPS	220	216	212	221	211	197	105	134	139	171	164	197	217	2,404
		CWS	82	42	49	71	87	47	16	27	41	43	31	46	39	621
		Total	302	258	261	292	298	244	121	161	180	214	195	243	256	3,025
BERGEN	Bergen Central	CPS	150	137	102	145	135	81	55	66	66	85	85	89	105	1,301
		CWS	57	47	51	57	47	24	12	13	21	14	12	31	33	419
		Total	207	184	153	202	182	105	67	79	87	99	97	120	138	1,720
	Bergen South	CPS	192	174	171	182	179	126	67	90	92	104	118	144	156	1,795
		CWS	72	65	51	73	57	50	11	20	15	29	18	36	25	522
		Total	264	239	222	255	236	176	78	110	107	133	136	180	181	2,317
	County Totals	CPS	342	311	273	327	314	207	122	156	158	189	203	233	261	3,096
		CWS	129	112	102	130	104	74	23	33	36	43	30	67	58	941
		Total	471	423	375	457	418	281	145	189	194	232	233	300	319	4,037
BURLINGTON	Burlington East	CPS	145	114	109	147	142	99	55	74	95	80	101	100	126	1,387
		CWS	39	44	48	50	40	22	12	17	11	29	17	30	19	378
		Total	184	158	157	197	182	121	67	91	106	109	118	130	145	1,765
	Burlington West	CPS	153	113	96	143	141	106	51	76	68	99	95	117	108	1,366
		CWS	48	34	32	43	45	29	15	14	11	23	24	24	25	367
		Total	201	147	128	186	186	135	66	90	79	122	119	141	133	1,733
	County Totals	CPS	298	227	205	290	283	205	106	150	163	179	196	217	234	2,753
		CWS	87	78	80	93	85	51	27	31	22	52	41	54	44	745
		Total	385	305	285	383	368	256	133	181	185	231	237	271	278	3,498
CAMDEN	Camden Central	CPS	122	100	118	112	119	99	40	68	86	74	69	87	99	1,193
		CWS	40	28	24	43	29	14	12	11	15	21	18	20	18	293
		Total	162	128	142	155	148	113	52	79	101	95	87	107	117	1,486
	Camden East	CPS	111	114	100	94	102	82	45	54	59	67	78	98	101	1,105
		CWS	30	31	30	44	32	16	7	8	14	18	15	19	13	277
		Total	141	145	130	138	134	98	52	62	73	85	93	117	114	1,382
	Camden North	CPS	135	101	84	119	117	96	39	56	71	81	63	85	86	1,133
		CWS	40	37	26	31	28	26	9	15	12	13	18	20	19	294
		Total	175	138	110	150	145	122	48	71	83	94	81	105	105	1,427
	Camden South	CPS	113	88	96	125	122	82	54	73	59	71	67	84	96	1,130
		CWS	34	24	30	35	32	22	10	20	9	17	17	20	11	281
		Total	147	112	126	160	154	104	64	93	68	88	84	104	107	1,411
	County Totals	CPS	481	403	398	450	460	359	178	251	275	293	277	354	382	4,561
		CWS	144	120	110	153	121	78	38	54	50	69	68	79	61	1,145
		Total	625	523	508	603	581	437	216	305	325	362	345	433	443	5,706
CAPE MAY	Cape May	CPS	75	63	62	68	42	56	29	37	55	58	52	75	52	724
		CWS	30	15	16	17	16	14	4	13	11	14	13	12	9	184
		Total	105	78	78	85	58	70	33	50	66	72	65	87	61	908
	County Totals	CPS	75	63	62	68	42	56	29	37	55	58	52	75	52	724
		CWS	30	15	16	17	16	14	4	13	11	14	13	12	9	184
		Total	105	78	78	85	58	70	33	50	66	72	65	87	61	908
CUMBERLAND	Cumberland East	CPS	59	47	61	57	52	44	24	40	44	37	43	49	61	618
		CWS	16	19	9	11	12	11	10	8	6	6	6	6	12	132
		Total	75	66	70	68	64	55	34	48	50	43	49	55	73	750
	Cumberland West	CPS	139	119	126	141	121	91	53	56	66	91	70	89	77	1,239
		CWS	42	31	25	29	31	25	9	12	14	11	12	21	17	279
		Total	181	150	151	170	152	116	62	68	80	102	82	110	94	1,518
	County Totals	CPS	198	166	187	198	173	135	77	96	110	128	113	138	138	1,857
		CWS	58	50	34	40	43	36	19	20	20	17	18	27	29	411
		Total	256	216	221	238	216	171	96	116	130	145	131	165	167	2,268

Data in this report is preliminary and may differ from any final report. This report is produced to ensure continuous quality improvement throughout DCF.



Table 5: Monthly Count of CPS Reports and CWS Referrals Assigned to CP&P Local Offices

County	Local Office	Type of Referral														Total
			Oct 2019	Nov 2019	Dec 2019	Jan 2020	Feb 2020	Mar 2020	Apr 2020	May 2020	Jun 2020	Jul 2020	Aug 2020	Sep 2020	Oct 2020	
ESSEX	Essex Central	CPS	121	96	98	106	99	71	58	60	58	61	67	69	76	1,040
		CWS	48	32	28	35	36	21	6	8	8	20	17	17	15	291
		Total	169	128	126	141	135	92	64	68	66	81	84	86	91	1,331
	Essex North	CPS	79	75	63	78	92	50	24	28	39	47	42	45	50	712
		CWS	24	23	22	30	26	19	2	18	8	9	9	21	16	227
		Total	103	98	85	108	118	69	26	46	47	56	51	66	66	939
	Essex South	CPS	66	83	71	87	64	65	22	32	46	40	54	53	48	731
		CWS	35	24	21	25	24	14	7	7	10	11	16	14	12	220
		Total	101	107	92	112	88	79	29	39	56	51	70	67	60	951
	Newark Center City	CPS	118	83	93	121	114	74	33	59	53	73	69	99	76	1065
		CWS	35	30	35	29	33	17	8	12	6	16	12	18	10	261
		Total	153	113	128	150	147	91	41	71	59	89	81	117	86	1326
	Newark Northeast	CPS	116	98	74	97	95	77	38	47	55	58	62	72	72	961
		CWS	35	27	19	35	25	19	7	5	17	15	17	17	22	260
		Total	151	125	93	132	120	96	45	52	72	73	79	89	94	1221
Newark South	CPS	134	107	95	120	94	74	38	69	50	72	93	91	84	1121	
	CWS	37	25	32	27	33	24	6	19	16	18	28	22	19	306	
	Total	171	132	127	147	127	98	44	88	66	90	121	113	103	1427	
County Totals	CPS	634	542	494	609	558	411	213	295	301	351	387	429	406	5630	
	CWS	214	161	157	181	177	114	36	69	65	89	99	109	94	1565	
	Total	848	703	651	790	735	525	249	364	366	440	486	538	500	7195	
GLOUCESTER	Gloucester East	CPS	109	94	102	111	110	90	47	67	71	79	75	83	73	1111
		CWS	25	28	24	26	32	16	9	7	14	15	15	14	14	239
		Total	134	122	126	137	142	106	56	74	85	94	90	97	87	1350
	Gloucester West	CPS	114	122	107	116	117	88	45	76	75	87	88	112	108	1255
		CWS	31	27	33	32	38	27	10	10	17	17	14	23	19	298
		Total	145	149	140	148	155	115	55	86	92	104	102	135	127	1553
	County Totals	CPS	223	216	209	227	227	178	92	143	146	166	163	195	181	2366
CWS		56	55	57	58	70	43	19	17	31	32	29	37	33	537	
Total		279	271	266	285	297	221	111	160	177	198	192	232	214	2903	
HUDSON	Hudson Central	CPS	122	112	103	141	99	88	37	69	62	81	74	75	90	1153
		CWS	41	37	26	48	37	32	12	12	19	21	19	21	32	357
		Total	163	149	129	189	136	120	49	81	81	102	93	96	122	1510
	Hudson North	CPS	97	82	67	85	85	66	23	42	34	56	46	53	45	781
		CWS	29	26	23	33	25	15	10	13	12	14	15	16	14	245
		Total	126	108	90	118	110	81	33	55	46	70	61	69	59	1026
	Hudson South	CPS	65	50	49	77	62	44	11	31	23	36	40	31	48	567
		CWS	25	13	19	27	13	12	5	8	7	10	7	7	6	159
		Total	90	63	68	104	75	56	16	39	30	46	47	38	54	726
	Hudson West	CPS	110	87	101	108	100	65	34	45	35	47	55	58	65	910
		CWS	46	30	27	39	28	25	5	6	7	17	12	13	25	280
		Total	156	117	128	147	128	90	39	51	42	64	67	71	90	1190
	County Totals	CPS	394	331	320	411	346	263	105	187	154	220	215	217	248	3411
		CWS	141	106	95	147	103	84	32	39	45	62	53	57	77	1041
		Total	535	437	415	558	449	347	137	226	199	282	268	274	325	4452
HUNTERDON	Hunterdon	CPS	46	45	51	48	37	30	20	27	20	29	34	31	31	449
		CWS	14	18	15	19	11	9	2	3	4	4	6	11	7	123
		Total	60	63	66	67	48	39	22	30	24	33	40	42	38	572
	County Totals	CPS	46	45	51	48	37	30	20	27	20	29	34	31	31	449
		CWS	14	18	15	19	11	9	2	3	4	4	6	11	7	123
Total	60	63	66	67	48	39	22	30	24	33	40	42	38	572		
MERCER	Mercer North	CPS	100	111	106	120	108	89	45	50	76	87	78	101	78	1149
		CWS	52	27	36	30	41	17	14	16	11	16	15	17	20	312
		Total	152	138	142	150	149	106	59	66	87	103	93	118	98	1461
	Mercer South	CPS	140	108	102	144	102	85	36	65	65	81	78	92	94	1192
		CWS	45	44	23	50	28	19	11	13	12	13	16	24	15	313
		Total	185	152	125	194	130	104	47	78	77	94	94	116	109	1505
	County Totals	CPS	240	219	208	264	210	174	81	115	141	168	156	193	172	2341
CWS		97	71	59	80	69	36	25	29	23	29	31	41	35	625	
Total		337	290	267	344	279	210	106	144	164	197	187	234	207	2966	

Data in this report is preliminary and may differ from any final report. This report is produced to ensure continuous quality improvement throughout DCF.



Table 5: Monthly Count of CPS Reports and CWS Referrals Assigned to CP&P Local Offices

County	Local Office	Type of Referral														Total
			Oct 2019	Nov 2019	Dec 2019	Jan 2020	Feb 2020	Mar 2020	Apr 2020	May 2020	Jun 2020	Jul 2020	Aug 2020	Sep 2020	Oct 2020	
MIDDLESEX	Middlesex Central	CPS	129	103	103	139	109	94	64	62	68	67	66	73	87	1164
		CWS	30	27	25	36	31	23	10	6	10	11	12	19	18	258
		Total	159	130	128	175	140	117	74	68	78	78	78	92	105	1422
	Middlesex Coastal	CPS	146	115	146	160	135	131	54	69	95	109	116	105	120	1501
		CWS	49	43	35	41	32	35	14	12	15	17	20	16	15	344
		Total	195	158	181	201	167	166	68	81	110	126	136	121	135	1845
	Middlesex West	CPS	145	121	139	151	125	97	58	75	79	84	88	102	96	1360
		CWS	59	17	40	53	43	25	5	7	16	22	19	29	20	355
		Total	204	138	179	204	168	122	63	82	95	106	107	131	116	1715
	County Totals	CPS	420	339	388	450	369	322	176	206	242	260	270	280	303	4025
		CWS	138	87	100	130	106	83	29	25	41	50	51	64	53	957
		Total	558	426	488	580	475	405	205	231	283	310	321	344	356	4982
MONMOUTH	Monmouth North	CPS	182	168	146	171	154	134	84	98	106	123	118	128	149	1761
		CWS	56	50	51	63	42	37	10	18	22	26	27	33	23	458
		Total	238	218	197	234	196	171	94	116	128	149	145	161	172	2219
	Monmouth South	CPS	152	101	123	124	138	110	58	71	89	99	100	118	116	1399
		CWS	47	31	29	53	47	20	14	9	16	15	22	23	23	349
		Total	199	132	152	177	185	130	72	80	105	114	122	141	139	1748
	County Totals	CPS	334	269	269	295	292	244	142	169	195	222	218	246	265	3160
		CWS	103	81	80	116	89	57	24	27	38	41	49	56	46	807
		Total	437	350	349	411	381	301	166	196	233	263	267	302	311	3967
MORRIS	Morris East	CPS	85	91	71	94	85	75	35	70	48	53	64	77	89	937
		CWS	36	33	25	36	42	19	8	15	16	13	12	24	9	288
		Total	121	124	96	130	127	94	43	85	64	66	76	101	98	1225
	Morris West	CPS	99	78	89	101	115	75	39	34	58	75	53	87	80	983
		CWS	35	24	27	33	31	25	3	5	15	11	21	14	20	264
		Total	134	102	116	134	146	100	42	39	73	86	74	101	100	1247
	County Totals	CPS	184	169	160	195	200	150	74	104	106	128	117	164	169	1920
		CWS	71	57	52	69	73	44	11	20	31	24	33	38	29	552
		Total	255	226	212	264	273	194	85	124	137	152	150	202	198	2472
OCEAN	Ocean North	CPS	207	158	189	197	196	150	81	133	121	147	121	147	150	1997
		CWS	85	36	45	67	47	37	8	17	18	24	20	36	22	462
		Total	292	194	234	264	243	187	89	150	139	171	141	183	172	2459
	Ocean South	CPS	174	152	134	173	168	131	73	95	113	142	112	132	130	1729
		CWS	59	41	38	45	35	37	15	12	12	23	25	34	17	393
		Total	233	193	172	218	203	168	88	107	125	165	137	166	147	2122
	County Totals	CPS	381	310	323	370	364	281	154	228	234	289	233	279	280	3726
		CWS	144	77	83	112	82	74	23	29	30	47	45	70	39	855
		Total	525	387	406	482	446	355	177	257	264	336	278	349	319	4581
PASSAIC	Passaic Central	CPS	205	153	140	172	180	154	55	87	102	102	86	124	134	1694
		CWS	73	50	64	66	63	44	17	24	25	18	22	30	28	524
		Total	278	203	204	238	243	198	72	111	127	120	108	154	162	2218
	Passaic North	CPS	182	141	151	149	160	124	60	84	70	123	108	137	123	1612
		CWS	59	46	54	69	57	31	11	18	22	24	34	30	27	482
		Total	241	187	205	218	217	155	71	102	92	147	142	167	150	2094
	County Totals	CPS	387	294	291	321	340	278	115	171	172	225	194	261	257	3306
		CWS	132	96	118	135	120	75	28	42	47	42	56	60	55	1006
		Total	519	390	409	456	460	353	143	213	219	267	250	321	312	4312
SALEM	Salem	CPS	82	71	51	58	58	64	31	37	40	45	39	44	56	676
		CWS	16	7	18	21	24	11	4	7	13	11	9	12	12	165
		Total	98	78	69	79	82	75	35	44	53	56	48	56	68	841
	County Totals	CPS	82	71	51	58	58	64	31	37	40	45	39	44	56	676
		CWS	16	7	18	21	24	11	4	7	13	11	9	12	12	165
		Total	98	78	69	79	82	75	35	44	53	56	48	56	68	841
SOMERSET	Somerset	CPS	158	124	115	150	151	103	57	78	69	98	84	117	116	1420
		CWS	44	31	31	47	38	23	9	14	13	16	17	38	14	335
		Total	202	155	146	197	189	126	66	92	82	114	101	155	130	1755
	County Totals	CPS	158	124	115	150	151	103	57	78	69	98	84	117	116	1420
		Total	202	155	146	197	189	126	66	92	82	114	101	155	130	1755

Data in this report is preliminary and may differ from any final report. This report is produced to ensure continuous quality improvement throughout DCF.



Table 5: Monthly Count of CPS Reports and CWS Referrals Assigned to CP&P Local Offices

County	Local Office	Type of Referral														Total
			Oct 2019	Nov 2019	Dec 2019	Jan 2020	Feb 2020	Mar 2020	Apr 2020	May 2020	Jun 2020	Jul 2020	Aug 2020	Sep 2020	Oct 2020	
SUSSEX	Sussex	CPS	97	71	74	85	93	55	41	38	45	75	59	70	76	879
		CWS	32	20	30	29	23	18	6	10	6	11	14	22	25	246
		Total	129	91	104	114	116	73	47	48	51	86	73	92	101	1125
	County Totals	CPS	97	71	74	85	93	55	41	38	45	75	59	70	76	879
		CWS	32	20	30	29	23	18	6	10	6	11	14	22	25	246
		Total	129	91	104	114	116	73	47	48	51	86	73	92	101	1125
UNION	Union Central	CPS	91	81	75	98	87	73	37	44	41	56	66	72	877	
		CWS	31	32	32	29	31	16	8	6	10	8	11	13	14	241
		Total	122	113	107	127	118	89	45	50	51	64	67	79	86	1118
	Union East	CPS	89	81	86	92	97	54	35	44	50	46	84	66	52	876
		CWS	40	29	19	36	40	19	5	4	15	7	16	16	19	265
		Total	129	110	105	128	137	73	40	48	65	53	100	82	71	1141
	Union West	CPS	112	99	78	94	88	64	46	44	52	54	52	75	80	938
		CWS	37	23	37	34	40	20	6	5	22	10	6	25	16	281
		Total	149	122	115	128	128	84	52	49	74	64	58	100	96	1219
	County Totals	CPS	292	261	239	284	272	191	118	132	143	156	192	207	204	2691
		CWS	108	84	88	99	111	55	19	15	47	25	33	54	49	787
		Total	400	345	327	383	383	246	137	147	190	181	225	261	253	3478
WARREN	Warren	CPS	72	78	69	67	77	55	46	43	40	64	66	70	85	832
		CWS	24	15	13	31	24	10	8	7	16	11	11	16	13	199
		Total	96	93	82	98	101	65	54	50	56	75	77	86	98	1031
	County Totals	CPS	72	78	69	67	77	55	46	43	40	64	66	70	85	832
		CWS	24	15	13	31	24	10	8	7	16	11	11	16	13	199
		Total	96	93	82	98	101	65	54	50	56	75	77	86	98	1031
County CPS Referral Total		CPS	5,558	4,725	4,598	5,388	5,077	3,958	2,082	2,797	2,948	3,514	3,432	4,017	4,133	52,227
County CWS Referral Total		CWS	1,864	1,383	1,387	1,778	1,576	1,036	402	531	630	732	737	970	821	13,847
County Referral Total		Total	7,422	6,108	5,985	7,166	6,653	4,994	2,484	3,328	3,578	4,246	4,169	4,987	4,954	66,074
Central Region IAIU	CPS	70	49	48	67	63	34	10	6	23	17	17	26	23	453	
	CWS	0	0	0	0	0	0	0	0	0	0	0	0	0	0	
	Total	70	49	48	67	63	34	10	6	23	17	17	26	23	453	
Metro Region IAIU	CPS	80	45	41	46	69	33	3	11	2	13	13	8	14	378	
	CWS	0	0	0	0	0	0	0	0	0	0	0	0	0	0	
	Total	80	45	41	46	69	33	3	11	2	13	13	8	14	378	
Northern Region IAIU	CPS	77	45	45	59	42	44	6	12	10	14	12	11	10	387	
	CWS	0	0	0	0	0	0	0	0	0	0	0	0	0	0	
	Total	77	45	45	59	42	44	6	12	10	14	12	11	10	387	
Southern Region IAIU	CPS	75	59	62	82	61	51	12	18	20	23	30	25	28	546	
	CWS	0	0	0	0	0	0	0	0	0	0	0	0	0	0	
	Total	75	59	62	82	61	51	12	18	20	23	30	25	28	546	
IAIU CPS Subtotal		CPS	302	198	196	254	235	162	31	47	55	67	72	70	75	1,764
IAIU CWS Subtotal		CWS	0	0	0	0	0	0	0	0	0	0	0	0	0	0
IAIU Subtotal		Total	302	198	196	254	235	162	31	47	55	67	72	70	75	1,764
County and IAIU CPS Subtotal		CPS	5,860	4,923	4,794	5,642	5,312	4,120	2,113	2,844	3,003	3,581	3,504	4,087	4,208	53,991
County and IAIU CWS Subtotal		CWS	1,864	1,383	1,387	1,778	1,576	1,036	402	531	630	732	737	970	821	13,847
Unable to Determine(1)		Total	170	117	108	135	113	79	39	59	48	51	149	126	93	1,287
Other Offices		Total	0	0	0	2	3	2	2	0	0	2	1	0	3	15
Grand Total		Total	7,894	6,423	6,289	7,557	7,004	5,237	2,556	3,434	3,681	4,366	4,391	5,183	5,125	69,140

(1) CPS Reports or CWS Referrals not assigned to an office through the Assignment Designee, but were assigned to an office for an assessment or investigation.