



NEW JERSEY DEPARTMENT OF
CHILDREN AND FAMILIES

Child Protection and Permanency

Monthly Screening and Investigation Report October 2022

Christine Norbut Beyer, MSW
Commissioner



Table of Contents

Table 1: NJ State Central Registry Activity: Monthly Child Abuse and Neglect Hotline Calls, Intakes and Assignments to Child Protection & Permanency (CP&P) Offices

Chart 1: CP&P Annual Trends in Child Protection Services (CPS) Reports and Child Welfare Services (CWS) Referrals

Table 2: Assignments to CP&P Offices: CPS Reports and CWS Referrals

Table 3: Source of CPS Reports and CWS Referrals

Table 4: Monthly Count of CPS Reports and CWS Referrals Assigned to Counties

Table 5: Monthly Count of CPS Reports and CWS Referrals Assigned to CP&P Local Offices

Table 1: NJ State Central Registry Activity: Monthly Child Abuse and Neglect Hotline Calls, Intakes and Assignments to CP&P Offices^{1,2,7}

2021-2022	Hotline Call Activity				Intakes Recorded in NJ SPIRIT ^{6,8}													Assignments to CP&P Offices					
	Total Calls to SCR ³	Abandon Calls ⁴	Average Time to Answer (seconds)	Resulting NJS Intakes ⁵	CPS Reports		CWS Referrals		No Action Required (NAR)		Related Information (RI)		Information & Referral (I&R)		Information Only (IO)		Unusual Incident (UIRS)		CPS Reports		CWS Referrals		Total
					n	%	n	%	n	%	n	%	n	%	n	%	n	%	n	%	n	%	
October 2021	14,262	1,183	152	14,500	5,213	36.0%	631	4.4%	200	1.4%	3,287	22.7%	3,277	22.6%	1,890	13.0%	2	0.0%	5,213	89.2%	630	10.8%	5,843
November 2021	13,077	1,619	262	12,689	4,689	37.0%	539	4.2%	165	1.3%	2,817	22.2%	2,865	22.6%	1,609	12.7%	5	0.0%	4,689	89.7%	541	10.3%	5,230
December 2021	12,921	1,426	222	12,594	4,601	36.5%	558	4.4%	157	1.2%	2,746	21.8%	2,858	22.7%	1,660	13.2%	14	0.1%	4,601	89.2%	557	10.8%	5,158
January 2022	11,733	942	163	11,798	4,274	36.2%	524	4.4%	116	1.0%	2,561	21.7%	2,641	22.4%	1,672	14.2%	10	0.1%	4,274	89.1%	523	10.9%	4,797
February 2022	13,523	1,838	304	12,923	4,867	37.7%	632	4.9%	168	1.3%	2,732	21.1%	2,990	23.1%	1,524	11.8%	10	0.1%	4,867	88.5%	635	11.5%	5,502
March 2022	15,347	1,916	281	14,886	5,781	38.8%	727	4.9%	207	1.4%	2,946	19.8%	3,468	23.3%	1,750	11.8%	7	0.0%	5,780	88.8%	727	11.2%	6,507
April 2022	13,145	2,124	398	12,290	4,669	38.0%	637	5.2%	168	1.4%	2,486	20.2%	2,786	22.7%	1,537	12.5%	7	0.1%	4,669	88.0%	636	12.0%	5,305
May 2022	13,609	1,526	201	13,433	5,228	38.9%	644	4.8%	177	1.3%	2,804	20.9%	2,967	22.1%	1,604	11.9%	9	0.1%	5,228	89.0%	647	11.0%	5,875
June 2022	13,105	1,997	325	12,478	4,854	38.9%	597	4.8%	196	1.6%	2,678	21.5%	2,580	20.7%	1,569	12.6%	4	0.0%	4,854	89.0%	598	11.0%	5,452
July 2022	11,225	1,022	164	11,445	4,277	37.4%	590	5.2%	155	1.4%	2,712	23.7%	1,956	17.1%	1,749	15.3%	6	0.1%	4,277	87.9%	590	12.1%	4,867
August 2022	10,651	841	101	16,623	4,103	24.7%	589	3.5%	164	1.0%	2,465	14.8%	4,070	24.5%	5,202	31.3%	30	0.2%	4,103	87.4%	589	12.6%	4,692
September 2022	12,502	1,199	129	12,828	4,810	37.5%	681	5.3%	178	1.4%	2,818	22.0%	2,724	21.2%	1,614	12.6%	3	0.0%	4,810	87.6%	680	12.4%	5,490
October 2022	13,496	1,226	142	16,804	5,356	31.9%	724	4.3%	178	1.1%	3,153	18.8%	4,212	25.1%	3,160	18.8%	21	0.1%	5,356	88.1%	725	11.9%	6,081
	12,969	1,451	219	13,484	4,825	35.8%	621	4.6%	171	1.3%	2,785	20.7%	3,030	22.5%	2,042	15.1%	10	0.1%	4,825	88.6%	621	11.4%	5,446
Overall Total	168,596	18,859		175,291	62,722		8,073		2,229		36,205		39,394		26,540		128		62,721	88.6%	8,078	11.4%	70,799

¹Comes from three distinct sources: (1) the Automatic Call Distribution (ACD) phone system; which keeps a count of the number of calls and call routing; (2) Monthly NJSpirit Intakes; which record decision making on calls received by hotline screeners, and (3)

²The number of Intakes, CPS Reports, and CWS Referrals are based on an extract from NJSpirit.

³Data extracted by the Office of Research, Evaluation, and Reporting on **November 09, 2022** includes all Intakes, CPS Reports, and CWS Referrals received from **October 01, 2022** through **October 31, 2022**.

⁴The number of calls received through the ACD System that were directed to a screener from any call-in phone number.

⁵The number of calls received through the ACD System that are abandoned either while waiting in queue or while ringing.

⁶The number of Intakes entered in NJSpirit from the number of calls received.

⁷The number of Intakes recorded in NJSpirit, by type of Intake. There is not a one-to-one relationship between an ACD call and an Intake; multiple calls to State Central Registry (SCR) may result in a single Intake, or one call may result in multiple Intakes.

⁸Intake: The process of documenting: a report of alleged abuse or neglect of a child (CPS); a request for services on behalf of a child, or a referral of a child for services (CWS); a call in which the caller provides additional or clarifying information about a current

CP&P Annual Trends in CPS Reports and CWS Referrals

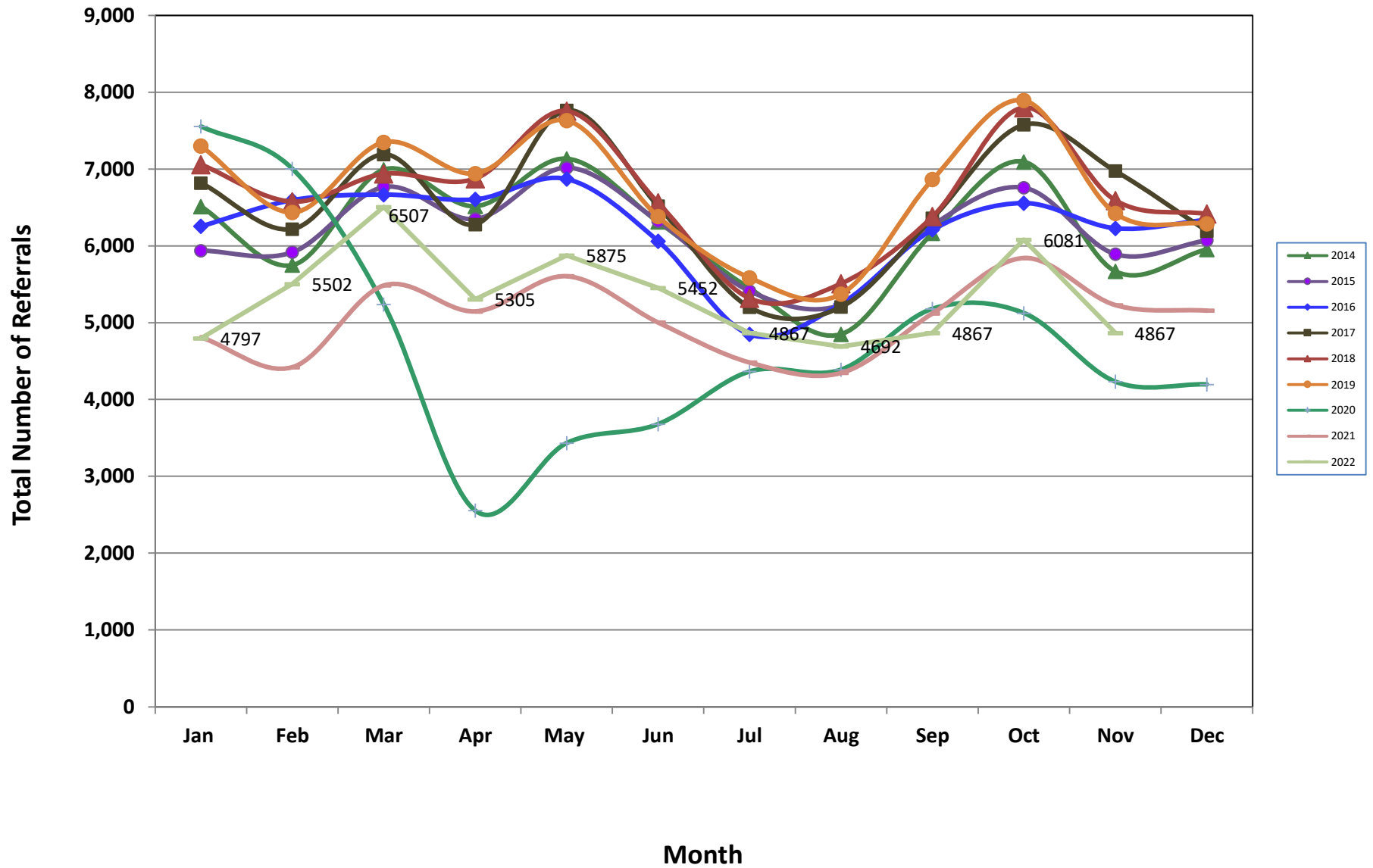


Table 2: Assignments to CP&P Offices: CPS Reports and CWS Referrals¹

Intake Date ³		CPS Reports ²	CWS Referrals ²	Total Assignments ²
2017	Jan 2017	5,111	1,708	6,819
	Feb 2017	4,716	1,504	6,220
	Mar 2017	5,349	1,843	7,192
	Apr 2017	4,790	1,490	6,280
	May 2017	5,847	1,919	7,766
	Jun 2017	4,853	1,665	6,518
	Jul 2017	3,814	1,389	5,203
	Aug 2017	3,866	1,340	5,206
	Sep 2017	4,719	1,643	6,362
	Oct 2017	5,613	1,966	7,579
	Nov 2017	5,223	1,753	6,976
	Dec 2017	4,601	1,594	6,195
	Total	58,502	19,814	78,316
2018	Jan 2018	5,276	1,784	7,060
	Feb 2018	4,933	1,644	6,577
	Mar 2018	5,212	1,727	6,939
	Apr 2018	5,275	1,601	6,876
	May 2018	5,920	1,836	7,756
	Jun 2018	4,948	1,615	6,563
	Jul 2018	4,011	1,308	5,319
	Aug 2018	4,102	1,408	5,510
	Sep 2018	4,748	1,634	6,382
	Oct 2018	5,790	2,011	7,801
	Nov 2018	4,973	1,620	6,593
	Dec 2018	4,891	1,527	6,418
	Total	60,079	19,715	79,794
2019	Jan 2019	5,443	1,858	7,301
	Feb 2019	4,811	1,628	6,439
	Mar 2019	5,677	1,824	7,501
	Apr 2019	5,313	1,630	6,943
	May 2019	5,853	1,781	7,634
	Jun 2019	4,874	1,509	6,383
	Jul 2019	4,277	1,309	5,586
	Aug 2019	4,068	1,306	5,374
	Sep 2019	5,315	1,551	6,866
	Oct 2019	5,968	1,926	7,894
	Nov 2019	4,991	1,432	6,423
	Dec 2019	4,855	1,434	6,289
	Total	61,445	19,188	80,633

Table 2: Assignments to CP&P Offices: CPS Reports and CWS Referrals¹

Intake Date ³		CPS Reports ²	CWS Referrals ²	Total Assignments ²
2020	Jan 2020	5,715	1,842	7,557
	Feb 2020	5,380	1,624	7,004
	Mar 2020	4,172	1,065	5,237
	Apr 2020	2,149	407	2,556
	May 2020	2,897	537	3,434
	Jun 2020	3,045	636	3,681
	Jul 2020	3,628	738	4,366
	Aug 2020	3,569	822	4,391
	Sep 2020	4,153	1,030	5,183
	Oct 2020	4,257	868	5,125
	Nov 2020	3,564	670	4,234
	Dec 2020	3,517	681	4,198
Total		46,046	10,920	56,966
2021	Jan 2021	4,018	794	4,812
	Feb 2021	3,767	655	4,422
	Mar 2021	4,657	830	5,487
	Apr 2021	4,398	750	5,148
	May 2021	4,870	736	5,606
	Jun 2021	4,412	592	5,004
	Jul 2021	3,914	570	4,484
	Aug 2021	3,866	482	4,348
	Sep 2021	4,559	564	5,123
	Oct 2021	5,213	630	5,843
	Nov 2021	4,689	541	5,230
	Dec 2021	4,601	557	5,158
Total		52,964	7,701	60,665
2022	Jan 2022	4,274	523	4,797
	Feb 2022	4,867	635	5,502
	Mar 2022	5,780	727	6,507
	Apr 2022	4,669	636	5,305
	May 2022	5,228	647	5,875
	Jun 2022	4,854	598	5,452
	Jul 2022	4,277	590	4,867
	Aug 2022	4,103	589	4,692
	Sep 2022	4,810	680	5,490
	Oct 2022	5,356	725	6,081
	Total		43,944	5,827
Grand Total		322,980	83,165	406,145

¹Source of Data: NJ SPIRIT

²A CPS Report or a CWS Referral may include multiple children in a family, with one or more allegation or request for services. In these cases, each CPS Report or CWS Referral is counted once - the CPS Report or the CWS Referral is the unit of analysis rather than the child.

³Prior to January 2014, the number of CPS Reports and CWS Referrals was based on the type of assignment of the CPS Report or CWS Referral. Beginning in January 2014, the number of CPS Reports and CWS Referrals is based on the number of CPS Reports and CWS Referrals received.

Table 3: Source of CPS Reports and CWS Referrals

	Source	Oct 2021	Nov 2021	Dec 2021	Jan 2022	Feb 2022	Mar 2022	Apr 2022	May 2022	Jun 2022	Jul 2022	Aug 2022	Sep 2022	Oct 2022		13 Month Total	
CPS Reports and CWS Referrals	School Staff	1,450	1,303	1,252	983	1,549	1,998	1,227	1,456	929	162	91	1,130	1,602	26%	15,132	21%
	Healthcare Provider	780	746	706	746	750	895	728	763	786	787	777	747	843	14%	10,054	14%
	Law Enforcement	1,446	1,340	1,341	1,238	1,234	1,478	1,373	1,513	1,549	1,624	1,617	1,421	1,514	25%	18,688	26%
	Government Agency	222	205	209	212	253	261	261	233	262	276	260	243	258	4%	3,155	4%
	Parent	393	377	378	347	349	380	333	383	399	420	413	421	426	7%	5,019	7%
	Relative/Friend/Neighbor	350	289	342	337	275	298	301	344	318	380	346	337	296	5%	4,213	6%
	Anonymous	506	364	367	366	461	471	410	527	493	437	458	502	480	8%	5,842	8%
	CP&P	73	45	49	54	56	75	62	42	53	53	46	57	49	1%	714	1%
	Court/Legal	126	89	89	100	108	144	140	116	136	144	147	139	135	2%	1,613	2%
	Community Group/Individual	175	169	144	158	183	198	176	201	205	235	211	180	158	3%	2,393	3%
	Facility Staff (incl Correctional Facility)	55	47	53	54	56	55	59	62	59	59	52	35	44	1%	690	1%
	Child (Self)	42	28	30	29	29	25	25	18	28	30	34	33	21	0%	372	1%
	Other	214	217	182	160	183	209	188	194	222	241	216	224	233	4%	2,683	4%
	Daycare/Babysitter	11	11	16	13	16	20	22	23	13	19	24	21	22	0%	231	0%
	Total	5,843	5,230	5,158	4,797	5,502	6,507	5,305	5,875	5,452	4,867	4,692	5,490	6,081		70,799	

Table 4: Monthly Count of CPS Reports and CWS Referrals Assigned to Counties

County														Average Number of Assignments Last 13 Months	Sep 22 to Oct 22 Numerical Difference
	Oct 2021	Nov 2021	Dec 2021	Jan 2022	Feb 2022	Mar 2022	Apr 2022	May 2022	Jun 2022	Jul 2022	Aug 2022	Sep 2022	Oct 2022		
Atlantic	255	234	215	189	245	268	222	250	233	197	217	236	256	232	20
Bergen	350	345	360	290	354	425	348	327	349	305	276	315	356	338	41
Burlington	280	264	270	264	283	359	255	300	292	284	240	305	314	285	9
Camden	511	407	419	404	449	542	458	474	422	385	415	511	499	454	-12
Cape May	70	66	70	62	59	74	62	68	69	76	78	80	81	70	1
Cumberland	196	167	190	149	160	202	166	206	182	180	166	174	195	179	21
Essex	565	535	489	456	550	647	532	581	517	477	497	528	590	536	62
Gloucester	221	215	204	216	195	257	217	218	206	211	190	222	221	215	-1
Hudson	371	349	321	341	392	415	324	409	327	323	242	356	352	348	-4
Hunterdon	52	44	44	40	33	55	46	38	56	29	32	52	54	44	2
Mercer	245	218	230	189	229	263	217	258	229	239	232	236	294	237	58
Middlesex	472	355	408	356	464	520	388	432	404	283	308	409	436	403	27
Monmouth	331	294	294	260	288	342	297	332	286	236	266	289	317	295	28
Morris	185	189	176	193	193	213	180	216	205	165	171	190	230	193	40
Ocean	382	341	333	304	305	370	332	372	375	340	320	356	391	348	35
Passaic	402	350	330	274	354	415	347	385	350	295	264	323	396	345	73
Salem	78	56	57	65	74	84	55	81	53	62	67	70	60	66	-10
Somerset	148	130	111	112	141	165	107	142	132	113	92	130	174	131	44
Sussex	99	85	72	84	100	107	95	95	95	73	69	87	114	90	27
Union	293	277	277	257	290	363	317	332	310	281	259	265	353	298	88
Warren	68	93	67	86	83	121	79	86	85	73	78	100	91	85	-9
County Subtotals	5,574	5,014	4,937	4,591	5,241	6,207	5,044	5,602	5,177	4,627	4,479	5,234	5,774	5,192	540
Central Region IAIU	53	31	37	32	43	54	35	60	32	38	35	47	50	42	3
Metro Region IAIU	29	26	21	27	36	35	35	41	41	22	23	34	54	33	20
Northern Region IAIU	39	44	42	28	40	50	38	52	40	32	33	42	50	41	8
Southern Region IAIU	41	33	42	35	46	59	46	48	56	56	27	50	69	47	19
IAIU Subtotals	162	134	142	122	165	198	154	201	169	148	118	173	223	162	50
¹ Unable to Determine	107	82	78	84	92	102	107	72	103	90	93	80	84	90	4
Other Offices	0	0	1	0	4	0	0	0	3	2	2	3	0	1	-3
Grand Total	5,843	5,230	5,158	4,797	5,502	6,507	5,305	5,875	5,452	4,867	4,692	5,490	6,081	5,446	591

¹CPS Reports or CWS Referrals not assigned to an office through the Assignment Designee, but were assigned to an office for an assessment or investigation.



Table 5: Monthly Count of CPS Reports and CWS Referrals Assigned to CP&P Local Offices

County	Local Office	Type of Referral														Total
			Oct 2021	Nov 2021	Dec 2021	Jan 2022	Feb 2022	Mar 2022	Apr 2022	May 2022	Jun 2022	Jul 2022	Aug 2022	Sep 2022	Oct 2022	
ATLANTIC	Atlantic East	CPS	126	118	104	114	124	128	106	116	117	88	100	106	106	1,453
		CWS	13	12	14	9	13	21	26	15	19	21	22	15	15	215
		Total	139	130	118	123	137	149	132	131	136	109	122	121	121	1,668
	Atlantic West	CPS	104	90	85	58	90	103	81	107	85	74	84	107	113	1,181
		CWS	12	14	12	8	18	16	9	12	12	14	11	8	22	168
		Total	116	104	97	66	108	119	90	119	97	88	95	115	135	1,349
	County Totals	CPS	230	208	189	172	214	231	187	223	202	162	184	213	219	2,634
		CWS	25	26	26	17	31	37	35	27	31	35	33	23	37	383
		Total	255	234	215	189	245	268	222	250	233	197	217	236	256	3,017
BERGEN	Bergen Central	CPS	139	133	127	111	152	169	119	119	142	108	82	117	137	1,655
		CWS	19	18	11	13	17	17	18	13	7	14	27	17	19	210
		Total	158	151	138	124	169	186	137	132	149	122	109	134	156	1,865
	Bergen South	CPS	177	174	197	148	170	217	188	179	176	160	142	156	176	2,260
		CWS	15	20	25	18	15	22	23	16	24	23	25	25	24	275
		Total	192	194	222	166	185	239	211	195	200	183	167	181	200	2,535
	County Totals	CPS	316	307	324	259	322	386	307	298	318	268	224	273	313	3,915
		CWS	34	38	36	31	32	39	41	29	31	37	52	42	43	485
		Total	350	345	360	290	354	425	348	327	349	305	276	315	356	4,400
BURLINGTON	Burlington East	CPS	137	115	111	119	121	162	103	134	133	115	96	130	136	1,612
		CWS	11	18	16	16	11	17	17	15	21	16	22	26	19	225
		Total	148	133	127	135	132	179	120	149	154	131	118	156	155	1,837
	Burlington West	CPS	115	115	128	119	127	156	118	129	123	134	106	125	132	1,627
		CWS	17	16	15	10	24	24	17	22	15	19	16	24	27	246
		Total	132	131	143	129	151	180	135	151	138	153	122	149	159	1,873
	County Totals	CPS	252	230	239	238	248	318	221	263	256	249	202	255	268	3,239
		CWS	28	34	31	26	35	41	34	37	36	35	38	50	46	471
		Total	280	264	270	264	283	359	255	300	292	284	240	305	314	3,710
CAMDEN	Camden Central	CPS	117	93	91	91	104	111	95	112	99	95	112	124	136	1,380
		CWS	17	15	14	16	16	7	9	17	21	13	20	22	20	207
		Total	134	108	105	107	120	118	104	129	120	108	132	146	156	1,587
	Camden East	CPS	128	94	81	84	95	106	107	94	98	84	68	111	93	1,243
		CWS	16	14	20	22	11	20	15	16	20	8	9	17	20	208
		Total	144	108	101	106	106	126	122	110	118	92	77	128	113	1,451
	Camden North	CPS	102	91	87	89	103	135	98	85	71	73	86	110	109	1,239
		CWS	15	5	14	9	16	22	22	21	12	18	14	12	16	196
		Total	117	96	101	98	119	157	120	106	83	91	100	122	125	1,435
	Camden South	CPS	96	85	94	83	95	117	101	122	88	81	92	102	93	1,249
		CWS	20	10	18	10	9	24	11	7	13	13	14	13	12	174
		Total	116	95	112	93	104	141	112	129	101	94	106	115	105	1,423
	County Totals	CPS	443	363	353	347	397	469	401	413	356	333	358	447	431	5,111
		CWS	68	44	66	57	52	73	57	61	66	52	57	64	68	785
Total		511	407	419	404	449	542	458	474	422	385	415	511	499	5,896	
CAPE MAY	Cape May	CPS	61	56	61	56	52	63	56	58	61	68	66	67	71	796
		CWS	9	10	9	6	7	11	6	10	8	8	12	13	10	119
		Total	70	66	70	62	59	74	62	68	69	76	78	80	81	915
	County Totals	CPS	61	56	61	56	52	63	56	58	61	68	66	67	71	796
		CWS	9	10	9	6	7	11	6	10	8	8	12	13	10	119
Total	70	66	70	62	59	74	62	68	69	76	78	80	81	915		
CUMBERLAND	Cumberland East	CPS	75	59	71	56	54	74	59	65	65	62	66	56	82	844
		CWS	11	6	8	11	14	10	4	12	11	10	12	13	5	127
		Total	86	65	79	67	68	84	63	77	76	72	78	69	87	971
	Cumberland West	CPS	102	94	96	67	81	109	90	115	94	92	78	93	91	1,202
		CWS	8	8	15	15	11	9	13	14	12	16	10	12	17	160
		Total	110	102	111	82	92	118	103	129	106	108	88	105	108	1,362
	County Totals	CPS	177	153	167	123	135	183	149	180	159	154	144	149	173	2,046
		CWS	19	14	23	26	25	19	17	26	23	26	22	25	22	287
Total		196	167	190	149	160	202	166	206	182	180	166	174	195	2,333	

Data in this report is preliminary and may differ from any final report. This report is produced to ensure continuous quality improvement throughout DCF.

Table 5: Monthly Count of CPS Reports and CWS Referrals Assigned to CP&P Local Offices

County	Local Office	Type of Referral														Total
			Oct 2021	Nov 2021	Dec 2021	Jan 2022	Feb 2022	Mar 2022	Apr 2022	May 2022	Jun 2022	Jul 2022	Aug 2022	Sep 2022	Oct 2022	
ESSEX	Essex Central	CPS	88	78	68	57	69	78	89	83	77	73	79	85	89	1,013
		CWS	14	7	12	6	13	10	14	10	9	8	9	10	12	134
		Total	102	85	80	63	82	88	103	93	86	81	88	95	101	1,147
	Essex North	CPS	78	85	109	81	88	115	82	91	90	71	60	86	92	1,128
		CWS	9	12	8	13	10	6	7	11	6	13	5	8	16	124
		Total	87	97	117	94	98	121	89	102	96	84	65	94	108	1,252
	Essex South	CPS	104	84	62	65	89	123	82	106	86	77	83	66	90	1,117
		CWS	14	11	15	8	11	15	10	17	9	12	9	11	19	161
		Total	118	95	77	73	100	138	92	123	95	89	92	77	109	1,278
	Newark Center City	CPS	86	64	75	79	71	90	75	88	67	65	73	74	93	1,000
		CWS	6	11	13	2	8	9	9	9	10	9	10	8	14	118
		Total	92	75	88	81	79	99	84	97	77	74	83	82	107	1,118
	Newark Northeast	CPS	75	80	50	68	91	94	83	72	63	61	74	79	77	967
		CWS	14	6	5	8	13	14	5	6	7	10	11	14	8	121
		Total	89	86	55	76	104	108	88	78	70	71	85	93	85	1,088
	Newark South	CPS	72	85	65	55	79	88	65	76	80	68	75	73	74	955
CWS		5	12	7	14	8	5	11	12	13	10	9	14	6	126	
Total		77	97	72	69	87	93	76	88	93	78	84	87	80	1,081	
County Totals	CPS	503	476	429	405	487	588	476	516	463	415	444	463	515	6,180	
	CWS	62	59	60	51	63	59	56	65	54	62	53	65	75	784	
	Total	565	535	489	456	550	647	532	581	517	477	497	528	590	6,964	
GLOUCESTER	Gloucester East	CPS	97	88	90	86	84	107	79	88	81	90	78	74	75	1,117
		CWS	13	13	7	14	12	16	18	9	13	13	11	15	10	164
		Total	110	101	97	100	96	123	97	97	94	103	89	89	85	1,281
	Gloucester West	CPS	93	95	92	103	91	123	103	109	98	101	85	110	114	1,317
		CWS	18	19	15	13	8	11	17	12	14	7	16	23	22	195
		Total	111	114	107	116	99	134	120	121	112	108	101	133	136	1,512
	County Totals	CPS	190	183	182	189	175	230	182	197	179	191	163	184	189	2,434
		CWS	31	32	22	27	20	27	35	21	27	20	27	38	32	359
		Total	221	215	204	216	195	257	217	218	206	211	190	222	221	2,793
HUDSON	Hudson Central	CPS	111	80	70	78	93	99	74	131	82	90	75	93	82	1,158
		CWS	13	18	15	9	18	17	11	10	14	10	9	11	15	170
		Total	124	98	85	87	111	116	85	141	96	100	84	104	97	1,328
	Hudson North	CPS	68	80	81	90	98	108	65	74	70	69	48	86	88	1,025
		CWS	9	6	8	5	12	10	10	10	6	9	6	15	5	111
		Total	77	86	89	95	110	118	75	84	76	78	54	101	93	1,136
	Hudson South	CPS	54	68	59	62	69	74	63	80	74	61	40	70	59	833
		CWS	12	4	5	12	8	4	10	14	8	10	8	7	14	116
		Total	66	72	64	74	77	78	73	94	82	71	48	77	73	949
	Hudson West	CPS	93	87	77	76	87	90	84	84	66	67	47	65	80	1,003
		CWS	11	6	6	9	7	13	7	6	7	7	9	9	9	106
		Total	104	93	83	85	94	103	91	90	73	74	56	74	89	1,109
	County Totals	CPS	326	315	287	306	347	371	286	369	292	287	210	314	309	4,019
CWS		45	34	34	35	45	44	38	40	35	36	32	42	43	503	
Total		371	349	321	341	392	415	324	409	327	323	242	356	352	4,522	
HUNTERDON	Hunterdon	CPS	49	42	42	36	30	50	39	34	50	25	27	49	50	523
		CWS	3	2	2	4	3	5	7	4	6	4	5	3	4	52
		Total	52	44	44	40	33	55	46	38	56	29	32	52	54	575
	County Totals	CPS	49	42	42	36	30	50	39	34	50	25	27	49	50	523
		CWS	3	2	2	4	3	5	7	4	6	4	5	3	4	52
Total	52	44	44	40	33	55	46	38	38	56	29	32	52	54	575	
MERCER	Mercer North	CPS	85	97	95	87	99	129	91	131	111	103	103	122	130	1,383
		CWS	18	12	12	13	16	14	18	12	15	19	14	10	11	184
		Total	103	109	107	100	115	143	109	143	126	122	117	132	141	1,567
	Mercer South	CPS	128	101	108	76	107	106	100	96	93	104	99	90	129	1,337
		CWS	14	8	15	13	7	14	8	19	10	13	16	14	24	175
		Total	142	109	123	89	114	120	108	115	103	117	115	104	153	1,512
	County Totals	CPS	213	198	203	163	206	235	191	227	204	207	202	212	259	2,720
		CWS	32	20	27	26	23	28	26	31	25	32	30	24	35	359
Total		245	218	230	189	229	263	217	258	229	239	232	236	294	3,079	



Table 5: Monthly Count of CPS Reports and CWS Referrals Assigned to CP&P Local Offices

County	Local Office	Type of Referral	Month													Total
			Oct 2021	Nov 2021	Dec 2021	Jan 2022	Feb 2022	Mar 2022	Apr 2022	May 2022	Jun 2022	Jul 2022	Aug 2022	Sep 2022	Oct 2022	
MIDDLESEX	Middlesex Central	CPS	118	101	114	114	125	129	126	107	117	64	79	100	109	1403
		CWS	17	9	10	5	19	18	12	14	12	7	2	17	21	163
		Total	135	110	124	119	144	147	138	121	129	71	81	117	130	1566
	Middlesex Coastal	CPS	149	120	120	113	138	173	124	137	127	106	116	137	139	1699
		CWS	12	9	12	6	10	8	12	13	13	14	12	19	14	154
		Total	161	129	132	119	148	181	136	150	140	120	128	156	153	1853
	Middlesex West	CPS	162	106	146	109	153	171	100	147	121	83	89	114	135	1636
		CWS	14	10	6	9	19	21	14	14	14	9	10	22	18	180
		Total	176	116	152	118	172	192	114	161	135	92	99	136	153	1816
	County Totals	CPS	429	327	380	336	416	473	350	391	365	253	284	351	383	4738
		CWS	43	28	28	20	48	47	38	41	39	30	24	58	53	497
		Total	472	355	408	356	464	520	388	432	404	283	308	409	436	5235
MONMOUTH	Monmouth North	CPS	186	132	158	132	145	186	157	172	134	123	123	142	187	1977
		CWS	14	17	17	11	12	14	16	22	5	13	23	11	15	190
		Total	200	149	175	143	157	200	173	194	139	136	146	153	202	2167
	Monmouth South	CPS	120	134	108	100	114	130	110	126	136	88	110	112	106	1494
		CWS	11	11	11	17	17	12	14	12	11	12	10	24	9	171
		Total	131	145	119	117	131	142	124	138	147	100	120	136	115	1665
	County Totals	CPS	306	266	266	232	259	316	267	298	270	211	233	254	293	3471
		CWS	25	28	28	28	29	26	30	34	16	25	33	35	24	361
		Total	331	294	294	260	288	342	297	332	286	236	266	289	317	3832
MORRIS	Morris East	CPS	74	82	73	75	101	89	72	85	85	67	70	82	99	1054
		CWS	6	7	12	11	5	8	11	7	12	9	7	5	10	110
		Total	80	89	85	86	106	97	83	92	97	76	77	87	109	1164
	Morris West	CPS	95	90	84	99	78	101	82	112	99	82	84	95	102	1203
		CWS	10	10	7	8	9	15	15	12	9	7	10	8	19	139
		Total	105	100	91	107	87	116	97	124	108	89	94	103	121	1342
	County Totals	CPS	169	172	157	174	179	190	154	197	184	149	154	177	201	2257
		CWS	16	17	19	19	14	23	26	19	21	16	17	13	29	249
		Total	185	189	176	193	193	213	180	216	205	165	171	190	230	2506
OCEAN	Ocean North	CPS	178	172	159	154	151	158	171	172	172	161	139	163	190	2140
		CWS	15	13	14	18	22	24	16	23	18	13	18	17	21	232
		Total	193	185	173	172	173	182	187	195	190	174	157	180	211	2372
	Ocean South	CPS	170	144	145	123	116	168	128	153	173	145	147	163	163	1938
		CWS	19	12	15	9	16	20	17	24	12	21	16	13	17	211
		Total	189	156	160	132	132	188	145	177	185	166	163	176	180	2149
County Totals	CPS	348	316	304	277	267	326	299	325	345	306	286	326	353	4078	
	CWS	34	25	29	27	38	44	33	47	30	34	34	30	38	443	
	Total	382	341	333	304	305	370	332	372	375	340	320	356	391	4521	
PASSAIC	Passaic Central	CPS	169	160	155	144	165	187	140	177	164	127	115	157	161	2021
		CWS	22	18	14	15	29	24	25	18	14	5	10	21	24	239
		Total	191	178	169	159	194	211	165	195	178	132	125	178	185	2260
	Passaic North	CPS	193	157	152	104	136	182	154	166	157	143	124	126	187	1981
		CWS	18	15	9	11	24	22	28	24	15	20	15	19	24	244
		Total	211	172	161	115	160	204	182	190	172	163	139	145	211	2225
	County Totals	CPS	362	317	307	248	301	369	294	343	321	270	239	283	348	4002
		CWS	40	33	23	26	53	46	53	42	29	25	25	40	48	483
		Total	402	350	330	274	354	415	347	385	350	295	264	323	396	4485
SALEM	Salem	CPS	71	50	49	58	59	70	48	72	46	51	62	61	53	750
		CWS	7	6	8	7	15	14	7	9	7	11	5	9	7	112
		Total	78	56	57	65	74	84	55	81	53	62	67	70	60	862
	County Totals	CPS	71	50	49	58	59	70	48	72	46	51	62	61	53	750
		CWS	7	6	8	7	15	14	7	9	7	11	5	9	7	112
		Total	78	56	57	65	74	84	55	81	53	62	67	70	60	862
SOMERSET	Somerset	CPS	133	125	101	103	132	149	103	132	119	102	81	116	152	1548
		CWS	15	5	10	9	9	16	4	10	13	11	11	14	22	149
		Total	148	130	111	112	141	165	107	142	132	113	92	130	174	1697
	County Totals	CPS	133	125	101	103	132	149	103	132	119	102	81	116	152	1548
		CWS	15	5	10	9	9	16	4	10	13	11	11	14	22	149
Total	148	130	111	112	141	165	107	142	132	113	92	130	174	1697		

Data in this report is preliminary and may differ from any final report. This report is produced to ensure continuous quality improvement throughout DCF.



Table 5: Monthly Count of CPS Reports and CWS Referrals Assigned to CP&P Local Offices

County	Local Office	Type of Referral														Total
			Oct 2021	Nov 2021	Dec 2021	Jan 2022	Feb 2022	Mar 2022	Apr 2022	May 2022	Jun 2022	Jul 2022	Aug 2022	Sep 2022	Oct 2022	
SUSSEX	Sussex	CPS	86	71	67	77	89	98	84	85	77	65	64	78	100	1041
		CWS	13	14	5	7	11	9	11	10	18	8	5	9	14	134
		Total	99	85	72	84	100	107	95	95	95	73	69	87	114	1175
	County Totals	CPS	86	71	67	77	89	98	84	85	77	65	64	78	100	1041
		CWS	13	14	5	7	11	9	11	10	18	8	5	9	14	134
		Total	99	85	72	84	100	107	95	95	95	73	69	87	114	1175
UNION	Union Central	CPS	87	64	82	56	78	95	90	88	97	88	74	72	118	1089
		CWS	3	11	5	10	8	16	4	15	10	10	9	8	11	120
		Total	90	75	87	66	86	111	94	103	107	98	83	80	129	1209
	Union East	CPS	93	88	87	108	75	104	98	96	88	90	78	69	95	1169
		CWS	9	9	15	8	9	14	10	13	19	11	13	14	10	154
		Total	102	97	102	116	84	118	108	109	107	101	91	83	105	1323
	Union West	CPS	93	95	79	67	108	115	98	105	89	71	76	87	105	1188
		CWS	8	10	9	8	12	19	17	15	7	11	9	15	14	154
		Total	101	105	88	75	120	134	115	120	96	82	85	102	119	1342
	County Totals	CPS	273	247	248	231	261	314	286	289	274	249	228	228	318	3446
		CWS	20	30	29	26	29	49	31	43	36	32	31	37	35	428
		Total	293	277	277	257	290	363	317	332	310	281	259	265	353	3874
	WARREN	Warren	CPS	64	86	62	77	77	103	71	77	78	70	68	88	86
CWS			4	7	5	9	6	18	8	9	7	3	10	12	5	103
Total			68	93	67	86	83	121	79	86	85	73	78	100	91	1110
County Totals		CPS	64	86	62	77	77	103	71	77	78	70	68	88	86	1007
		CWS	4	7	5	9	6	18	8	9	7	3	10	12	5	103
		Total	68	93	67	86	83	121	79	86	85	73	78	100	91	1110
County CPS Referral Total		CPS	5,001	4,508	4,417	4,107	4,653	5,532	4,451	4,987	4,619	4,085	3,923	4,588	5,084	59,955
County CWS Referral Total		CWS	573	506	520	484	588	675	593	615	558	542	556	646	690	7,546
County Referral Total		Total	5,574	5,014	4,937	4,591	5,241	6,207	5,044	5,602	5,177	4,627	4,479	5,234	5,774	67,501
Central Region IAIU	CPS	53	31	37	32	43	54	35	60	32	38	35	47	50	547	
	CWS	0	0	0	0	0	0	0	0	0	0	0	0	0	0	
	Total	53	31	37	32	43	54	35	60	32	38	35	47	50	547	
Metro Region IAIU	CPS	28	26	21	27	36	35	35	41	41	22	23	34	54	423	
	CWS	1	0	0	0	0	0	0	0	0	0	0	0	0	1	
	Total	29	26	21	27	36	35	35	41	41	22	23	34	54	424	
Northern Region IAIU	CPS	39	44	41	28	40	50	38	52	40	32	33	42	50	529	
	CWS	0	0	1	0	0	0	0	0	0	0	0	0	0	1	
	Total	39	44	42	28	40	50	38	52	40	32	33	42	50	530	
Southern Region IAIU	CPS	41	33	42	35	46	59	46	48	56	56	27	50	69	608	
	CWS	0	0	0	0	0	0	0	0	0	0	0	0	0	0	
	Total	41	33	42	35	46	59	46	48	56	56	27	50	69	608	
IAIU CPS Subtotal		CPS	161	134	141	122	165	198	154	201	169	148	118	173	223	2,107
IAIU CWS Subtotal		CWS	1	0	1	0	0	0	0	0	0	0	0	0	0	2
IAIU Subtotal		Total	162	134	142	122	165	198	154	201	169	148	118	173	223	2,109
County and IAIU CPS Subtotal		CPS	5,162	4,642	4,558	4,229	4,818	5,730	4,605	5,188	4,788	4,233	4,041	4,761	5,307	62,062
County and IAIU CWS Subtotal		CWS	574	506	521	484	588	675	593	615	558	542	556	646	690	7,548
Unable to Determine(1)		Total	107	82	78	84	92	102	107	72	103	90	93	80	84	1,174
Other Offices		Total	0	0	1	0	4	0	0	0	3	2	2	3	0	15
Grand Total		Total	5,843	5,230	5,158	4,797	5,502	6,507	5,305	5,875	5,452	4,867	4,692	5,490	6,081	70,799

(1) CPS Reports or CWS Referrals not assigned to an office through the Assignment Designee, but were assigned to an office for an assessment or investigation.