



Child Protection and Permanency

Monthly Screening and Investigation Report November 2016

Allison Blake, Ph.D., L.S.W.
Commissioner

December 13, 2016



Table of Contents

Table 1: NJ State Central Registry Activity: Monthly Child Abuse and Neglect Hotline Calls, Intakes and Assignments to Child Protection & Permanency (CP&P) Offices

Chart 1: CP&P Annual Trends in Child Protection Services (CPS) Reports and Child Welfare Services (CWS) Referrals

Table 2: Assignments to CP&P Offices: CPS Reports and CWS Referrals

Table 3: Source of CPS Reports and CWS Referrals

Table 4: Monthly Count of CPS Reports and CWS Referrals Assigned to Counties

Table 5: Monthly Count of CPS Reports and CWS Referrals Assigned to CP&P Local Offices

Table 1: NJ State Central Registry Activity: Monthly Child Abuse and Neglect Hotline Calls, Intakes and Assignments to CP&P Offices^{1,2,7}

2015 - 2016	Hotline Call Activity				Intakes Recorded in NJ SPIRIT ^{6,8}												Assignments to CP&P Offices				
	Total Calls to SCR ³	Abandon Calls ⁴	Average Time to Answer (seconds)	Resulting NJS Intakes ⁵	CPS Reports		CWS Referrals		No Action Required (NAR)		Related Information (RI)		Information & Referral (I&R)		Information Only (IO)		CPS Reports		CWS Referrals		Total
					n	%	n	%	n	%	n	%	n	%	n	%	n	%	n	%	
November 2015	13,321	445	20	14,527	4,417	30.4%	1,475	10.2%	347	2.4%	3,942	27.1%	1,513	10.4%	2,833	19.5%	4,417	74.9%	1,477	25.1%	5,894
December 2015	13,186	603	28	14,236	4,530	31.8%	1,544	10.8%	370	2.6%	3,709	26.1%	1,567	11.0%	2,516	17.7%	4,530	74.6%	1,544	25.4%	6,074
January 2016	13,499	551	40	14,655	4,686	32.0%	1,573	10.7%	282	1.9%	4,020	27.4%	1,482	10.1%	2,612	17.8%	4,686	74.9%	1,571	25.1%	6,257
February 2016	13,927	590	40	15,143	4,974	32.8%	1,620	10.7%	419	2.8%	3,836	25.3%	1,627	10.7%	2,667	17.6%	4,974	75.4%	1,622	24.6%	6,596
March 2016	14,064	446	32	15,619	5,000	32.0%	1,671	10.7%	428	2.7%	3,912	25.0%	1,812	11.6%	2,796	17.9%	5,000	75.0%	1,669	25.0%	6,669
April 2016	13,995	448	29	15,326	5,065	33.0%	1,541	10.1%	348	2.3%	3,774	24.6%	1,742	11.4%	2,856	18.6%	5,065	76.7%	1,542	23.3%	6,607
May 2016	14,389	413	26	15,806	5,238	33.1%	1,634	10.3%	393	2.5%	3,902	24.7%	1,852	11.7%	2,787	17.6%	5,238	76.2%	1,633	23.8%	6,871
June 2016	13,304	396	26	14,592	4,602	31.5%	1,460	10.0%	336	2.3%	3,687	25.3%	1,808	12.4%	2,699	18.5%	4,602	75.9%	1,461	24.1%	6,063
July 2016	11,304	338	25	12,531	3,663	29.2%	1,186	9.5%	295	2.4%	3,477	27.7%	1,376	11.0%	2,534	20.2%	3,663	75.5%	1,187	24.5%	4,850
August 2016	11,766	270	18	13,169	3,941	29.9%	1,308	9.9%	491	3.7%	3,311	25.1%	1,471	11.2%	2,647	20.1%	3,941	75.1%	1,307	24.9%	5,248
September 2016	13,277	383	25	14,637	4,654	31.8%	1,557	10.6%	305	2.1%	3,868	26.4%	1,699	11.6%	2,554	17.4%	4,654	74.9%	1,559	25.1%	6,213
October 2016	13,924	387	24	15,418	4,935	32.0%	1,623	10.5%	368	2.4%	4,100	26.6%	1,767	11.5%	2,625	17.0%	4,935	75.3%	1,622	24.7%	6,557
November 2016	13,310	441	30	14,666	4,677	31.9%	1,551	10.6%	300	2.0%	3,969	27.1%	1,667	11.4%	2,502	17.1%	4,677	75.1%	1,552	24.9%	6,229
	13,328	439	28	14,640	4,645	31.7%	1,519	10.4%	360	2.5%	3,808	26.0%	1,645	11.2%	2,664	18.2%	4,645	75.4%	1,519	24.6%	6,164
Overall Total	173,266	5,711		190,325	60,382		19,743		4,682		49,507		21,383		34,628		60,382	75.4%	19,746	24.6%	80,128

¹ Comes from three distinct sources: (1) the Automatic Call Distribution (ACD) phone system; which keeps a count of the number of calls and call routing; (2) Monthly NJSpirit Intakes; which record decision making on calls received by hotline screeners, and (3) NJSpirit extracts of assigned CWS Referrals and CPS Reports.

² The number of Intakes, CPS Reports, and CWS Referrals are based on an extract from NJSpirit. Data extracted by the Office of Research, Evaluation, and Reporting on **December 13, 2016** includes all Intakes, CPS Reports, and CWS Referrals received from **November 1, 2016 through November 30, 2016**.

³ The number calls received through the ACD System that were directed to a screener from any call-in phone number.

⁴ The number of calls received through the ACD System that are abandoned either while waiting in queue or while ringing.

⁵ The number of Intakes entered in NJSpirit from the number of calls received.

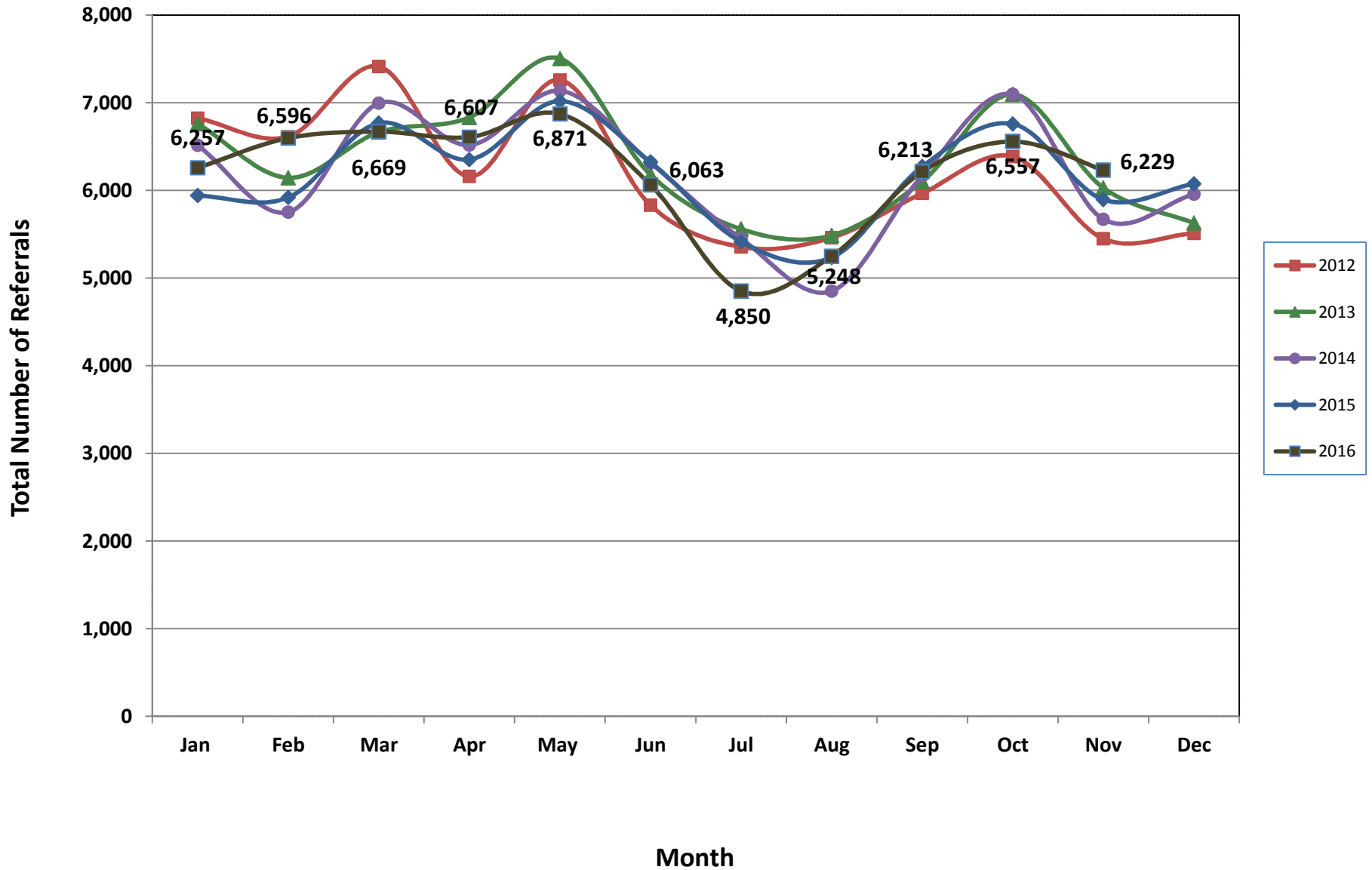
⁶ The number of Intakes recorded in NJSpirit, by type of Intake. There is not a one-to-one relationship between an ACD call and an Intake; multiple calls to State Central Registry (SCR) may result in a single Intake, or one call may result in multiple Intakes.

⁷ Intake: The process of documenting: a report of alleged abuse or neglect of a child (CPS); a request for services on behalf of a child, or a referral of a child for services (CWS); a call in which the caller provides additional or clarifying information about a current service case or active investigation (RI); informing a caller of, or referring a caller to, services available from other private or public sources (I&R); a call that requires no action by CP&P (NAR); or a response to a simple inquiry (IO).

⁸ NJ SPIRIT: NJ Statewide Protection Investigation and Reporting Information Tool case management system



CP&P Annual Trends in CPS Reports and CWS Referrals



The data contained in this report is considered preliminary and as a result, these figures might be different than the final reported figures. The data is produced for continuous quality improvement.

Table 2: Assignments to CP&P Offices: CPS Reports and CWS Referrals¹

Intake Date ³		CPS Reports ²	CWS Referrals ²	Total Assignments ²
2012	Jan 2012	5,530	1,294	6,824
	Feb 2012	5,358	1,255	6,613
	Mar 2012	5,985	1,428	7,413
	Apr 2012	4,899	1,259	6,158
	May 2012	5,874	1,385	7,259
	Jun 2012	4,640	1,190	5,830
	Jul 2012	4,254	1,101	5,355
	Aug 2012	4,325	1,135	5,460
	Sep 2012	4,769	1,196	5,965
	Oct 2012	5,178	1,207	6,385
	Nov 2012	4,310	1,138	5,448
	Dec 2012	4,394	1,116	5,510
	Total	59,516	14,704	74,220
2013	Jan 2013	5,464	1,296	6,760
	Feb 2013	4,966	1,177	6,143
	Mar 2013	5,355	1,309	6,664
	Apr 2013	5,430	1,402	6,832
	May 2013	5,993	1,510	7,503
	Jun 2013	4,947	1,230	6,177
	Jul 2013	4,330	1,228	5,558
	Aug 2013	4,330	1,155	5,485
	Sep 2013	4,851	1,251	6,102
	Oct 2013	5,614	1,481	7,095
	Nov 2013	4,694	1,334	6,028
	Dec 2013	4,397	1,229	5,626
	Total	60,371	15,602	75,973
2014	Jan 2014	5,097	1,416	6,513
	Feb 2014	4,457	1,295	5,752
	Mar 2014	5,408	1,586	6,994
	Apr 2014	5,049	1,467	6,516
	May 2014	5,501	1,635	7,136
	Jun 2014	4,796	1,517	6,313
	Jul 2014	4,202	1,247	5,449
	Aug 2014	3,629	1,222	4,851
	Sep 2014	4,668	1,498	6,166
	Oct 2014	5,509	1,586	7,095
	Nov 2014	4,254	1,416	5,670
	Dec 2014	4,509	1,447	5,956
	Total	57,079	17,332	74,411

Table 2: Assignments to CP&P Offices: CPS Reports and CWS Referrals¹

Intake Date ³		CPS Reports ²	CWS Referrals ²	Total Assignments ²
2015	Jan 2015	4,549	1,391	5,940
	Feb 2015	4,574	1,345	5,919
	Mar 2015	5,187	1,580	6,767
	Apr 2015	4,967	1,384	6,351
	May 2015	5,457	1,561	7,018
	Jun 2015	4,887	1,436	6,323
	Jul 2015	4,140	1,273	5,413
	Aug 2015	3,978	1,256	5,234
	Sep 2015	4,776	1,495	6,271
	Oct 2015	5,139	1,619	6,758
	Nov 2015	4,417	1,477	5,894
	Dec 2015	4,530	1,544	6,074
	Total	56,601	17,361	73,962
	2016	Jan 2016	4,686	1,571
Feb 2016		4,974	1,622	6,596
Mar 2016		5,000	1,669	6,669
Apr 2016		5,065	1,542	6,607
May 2016		5,238	1,633	6,871
Jun 2016		4,602	1,461	6,063
Jul 2016		3,663	1,187	4,850
Aug 2016		3,941	1,307	5,248
Sep 2016		4,654	1,559	6,213
Oct 2016		4,935	1,622	6,557
Nov 2016		4,677	1,552	6,229
Total		51,435	16,725	68,160
Grand Total		285,002	81,724	366,726

¹Source of Data: NJ SPIRIT

²A CPS Report or a CWS Referral may include multiple children in a family, with one or more allegation or request for services. In these cases, each CPS Report or CWS Referral is counted once - the CPS Report or the CWS Referral is the unit of analysis rather than the child.

³Prior to January 2014, the number of CPS Reports and CWS Referrals was based on the type of assignment of the CPS Report or CWS Referral. Beginning in January 2014, the number of CPS Reports and CWS Referrals is based on the number of CPS Reports and CWS

Table 3: Source of CPS Reports and CWS Referrals

	Source	Nov 2015	Dec 2015	Jan 2016	Feb 2016	Mar 2016	Apr 2016	May 2016	Jun 2016	Jul 2016	Aug 2016	Sep 2016	Oct 2016	Nov 2016		13 Month Total	
CPS Reports and CWS Referrals	School Staff	1,454	1,596	1,569	1,900	1,690	1,646	1,765	982	143	87	1,150	1,639	1,628	26%	17,249	22%
	Healthcare Provider	766	780	830	852	892	895	823	814	771	811	775	837	799	13%	10,645	13%
	Law Enforcement	909	910	910	953	1,052	1,030	1,056	1,152	1,048	1,093	1,013	1,049	989	16%	13,164	16%
	Government Agency	376	389	412	394	448	410	419	439	407	509	445	446	399	6%	5,493	7%
	Parent	451	495	529	504	503	566	597	546	521	591	555	517	507	8%	6,882	9%
	Relative/Friend/Neighbor	466	455	446	454	424	473	553	540	472	544	594	506	431	7%	6,358	8%
	Anonymous	609	587	628	612	676	662	777	697	560	611	710	642	605	10%	8,376	10%
	CP&P	121	112	113	133	155	104	133	120	112	132	125	123	117	2%	1,600	2%
	Court/Legal	108	108	119	132	154	137	141	124	143	130	135	124	98	2%	1,653	2%
	Community Group/Individual	240	255	294	274	262	269	236	238	262	286	272	257	260	4%	3,405	4%
	Facility Staff (incl Correctional Facility)	83	81	91	80	76	88	64	68	70	94	95	97	85	1%	1,072	1%
	Child (Self)	31	21	41	37	36	46	37	38	46	50	37	41	41	1%	502	1%
	Other	265	274	259	253	286	257	252	285	274	297	287	266	252	4%	3,507	4%
	Daycare/Babysitter	15	11	16	18	15	24	18	20	21	13	20	13	18	0%	222	0%
Total		5,894	6,074	6,257	6,596	6,669	6,607	6,871	6,063	4,850	5,248	6,213	6,557	6,229		80,128	

Table 4: Monthly Count of CPS Reports and CWS Referrals Assigned to Counties

County														Average Number of Assignments Last 13 Months	Sep 16 to Nov 16 Numerical Difference
	Nov 2015	Dec 2015	Jan 2016	Feb 2016	Mar 2016	April 2016	May 2016	Jun 2016	Jul 2016	Aug 2016	Sep 2016	Oct 2016	Nov 2016		
Atlantic	227	255	251	284	265	250	291	221	184	234	252	285	243	249	-9
Bergen	336	394	333	392	369	321	385	354	251	264	340	370	352	343	12
Burlington	258	268	275	315	309	321	321	260	238	262	309	293	325	289	16
Camden	461	498	558	551	527	573	608	532	391	465	534	537	536	521	2
Cape May	75	89	83	65	79	94	82	67	71	78	73	78	68	77	-5
Cumberland	177	174	195	179	206	219	245	202	184	183	209	201	230	200	21
Essex	660	625	685	701	752	743	717	644	534	573	626	713	659	664	33
Gloucester	245	261	251	252	285	267	233	234	212	223	244	266	224	246	-20
Hudson	342	431	424	450	412	403	481	400	304	279	403	450	389	398	-14
Hunterdon	37	39	53	58	46	62	38	42	36	38	44	36	46	44	2
Mercer	254	252	265	263	276	278	282	255	227	234	272	230	280	259	8
Middlesex	387	435	419	439	479	492	470	387	325	331	426	449	379	417	-47
Monmouth	343	308	328	413	361	373	366	353	272	327	347	382	332	347	-15
Morris	216	215	238	228	217	222	247	228	146	153	225	245	214	215	-11
Ocean	401	336	403	378	366	365	415	354	316	344	353	408	364	369	11
Passaic	422	449	421	504	510	455	456	401	299	331	397	471	439	427	42
Salem	89	81	94	67	94	89	82	80	63	67	89	78	66	80	-23
Somerset	157	143	141	160	165	152	169	160	139	112	149	158	184	153	35
Sussex	103	95	95	113	105	94	88	91	90	87	101	80	96	95	-5
Union	257	318	299	331	350	336	373	295	255	244	323	316	312	308	-11
Warren	81	78	93	87	77	99	106	88	62	78	97	97	84	87	-13
County Subtotals	5,528	5,744	5,904	6,230	6,250	6,208	6,455	5,648	4,599	4,907	5,813	6,143	5,822	5,789	9
Central Region IAIU	56	62	44	53	46	59	55	53	33	54	52	63	57	53	5
Metro Region IAIU	48	46	43	60	64	60	68	61	36	32	46	65	48	52	2
Northern Region IAIU	58	44	58	58	66	71	70	66	27	45	62	76	70	59	8
Southern Region IAIU	72	61	79	64	76	90	73	92	44	72	66	68	89	73	23
IAIU Subtotals	234	213	224	235	252	280	266	272	140	203	226	272	264	237	38
Unable to Determine¹	131	114	128	126	165	115	149	140	110	137	168	140	143	136	-25
Other Offices	1	3	1	5	2	4	1	3	1	1	6	2	0	2	-6
Grand Total	5,894	6,074	6,257	6,596	6,669	6,607	6,871	6,063	4,850	5,248	6,213	6,557	6,229	6,164	16

¹CPS Reports or CWS Referrals not assigned to an office through the Assignment Designee, but were assigned to an office for an assessment or investigation.



Table 5: Monthly Count of CPS Reports and CWS Referrals Assigned to CP&P Local Offices

County	Local Office	Type of Referral														Total
			Nov 2015	Dec 2015	Jan 2016	Feb 2016	Mar 2016	Apr 2016	May 2016	Jun 2016	Jul 2016	Aug 2016	Sep 2016	Oct 2016	Nov 2016	
ATLANTIC	Atlantic East	CPS	107	113	110	133	144	97	129	108	90	102	109	127	116	1,485
		CWS	32	36	43	34	27	35	41	34	25	44	38	34	42	465
		Total	139	149	153	167	171	132	170	142	115	146	147	161	158	1,950
	Atlantic West	CPS	70	82	70	88	71	95	94	66	51	72	82	101	60	1,002
		CWS	18	24	28	29	23	23	27	13	18	16	23	23	25	290
		Total	88	106	98	117	94	118	121	79	69	88	105	124	85	1,292
	County Totals	CPS	177	195	180	221	215	192	223	174	141	174	191	228	176	2,487
		CWS	50	60	71	63	50	58	68	47	43	60	61	57	67	755
		Total	227	255	251	284	265	250	291	221	184	234	252	285	243	3,242
BERGEN	Bergen Central	CPS	98	119	128	107	121	101	134	121	63	73	90	104	104	1,363
		CWS	37	41	39	51	48	32	40	39	37	29	28	34	40	495
		Total	135	160	167	158	169	133	174	160	100	102	118	138	144	1,858
	Bergen South	CPS	144	164	121	174	150	136	162	143	109	115	157	160	161	1,896
		CWS	57	70	45	60	50	52	49	51	42	47	65	72	47	707
		Total	201	234	166	234	200	188	211	194	151	162	222	232	208	2,603
	County Totals	CPS	242	283	249	281	271	237	296	264	172	188	247	264	265	3,259
		CWS	94	111	84	111	98	84	89	90	79	76	93	106	87	1,202
		Total	336	394	333	392	369	321	385	354	251	264	340	370	352	4,461
BURLINGTON	Burlington East	CPS	93	118	117	127	105	131	128	84	94	94	92	105	126	1,414
		CWS	28	20	32	39	38	32	39	34	34	33	49	41	33	452
		Total	121	138	149	166	143	163	167	118	128	127	141	146	159	1,866
	Burlington West	CPS	107	101	92	109	124	130	117	109	87	101	121	106	118	1,422
		CWS	30	29	34	40	42	28	37	33	23	34	47	41	48	466
		Total	137	130	126	149	166	158	154	142	110	135	168	147	166	1,888
	County Totals	CPS	200	219	209	236	229	261	245	193	181	195	213	211	244	2,836
		CWS	58	49	66	79	80	60	76	67	57	67	96	82	81	918
		Total	258	268	275	315	309	321	321	260	238	262	309	293	325	3,754
CAMDEN	Camden Central	CPS	101	104	127	119	104	136	123	122	92	97	115	146	121	1,507
		CWS	34	24	34	34	44	36	38	53	36	41	40	26	39	479
		Total	135	128	161	153	148	172	161	175	128	138	155	172	160	1,986
	Camden East	CPS	100	106	108	106	104	114	123	94	86	102	104	107	98	1,352
		CWS	32	27	28	27	16	27	33	28	31	21	34	32	34	370
		Total	132	133	136	133	120	141	156	122	117	123	138	139	132	1,722
	Camden North	CPS	83	108	104	105	102	132	115	95	56	79	97	101	95	1,272
		CWS	17	34	40	45	46	27	47	34	18	39	42	28	34	451
		Total	100	142	144	150	148	159	162	129	74	118	139	129	129	1,723
	Camden South	CPS	77	75	85	86	77	79	97	80	56	67	86	67	89	1,021
		CWS	17	20	32	29	34	22	32	26	16	19	16	30	26	319
		Total	94	95	117	115	111	101	129	106	72	86	102	97	115	1,340
	County Totals	CPS	361	393	424	416	387	461	458	391	290	345	402	421	403	5,152
		CWS	100	105	134	135	140	112	150	141	101	120	132	116	133	1,619
		Total	461	498	558	551	527	573	608	532	391	465	534	537	536	6,771
CAPE MAY	Cape May	CPS	51	64	61	51	57	72	68	51	51	65	62	62	48	763
		CWS	24	25	22	14	22	22	14	16	20	13	11	16	20	239
		Total	75	89	83	65	79	94	82	67	71	78	73	78	68	1,002
	County Totals	CPS	51	64	61	51	57	72	68	51	51	65	62	62	48	763
		CWS	24	25	22	14	22	22	14	16	20	13	11	16	20	239
		Total	75	89	83	65	79	94	82	67	71	78	73	78	68	1,002
CUMBERLAND	Cumberland East	CPS	39	46	59	52	48	64	81	61	46	40	48	40	58	682
		CWS	18	14	12	13	16	18	14	16	18	20	17	16	18	210
		Total	57	60	71	65	64	82	95	77	64	60	65	56	76	892
	Cumberland West	CPS	88	83	99	96	116	102	115	101	96	102	113	109	126	1,346
		CWS	32	31	25	18	26	35	35	24	24	21	31	36	28	366
		Total	120	114	124	114	142	137	150	125	120	123	144	145	154	1,712
	County Totals	CPS	127	129	158	148	164	166	196	162	142	142	161	149	184	2,028
		CWS	50	45	37	31	42	53	49	40	42	41	48	52	46	576
		Total	177	174	195	179	206	219	245	202	184	183	209	201	230	2,604

Data in this report is preliminary and may differ from any final report. This report is produced to ensure continuous quality improvement throughout DCF.



Table 5: Monthly Count of CPS Reports and CWS Referrals Assigned to CP&P Local Offices

County	Local Office	Type of Referral	Month													Total
			Nov 2015	Dec 2015	Jan 2016	Feb 2016	Mar 2016	Apr 2016	May 2016	Jun 2016	Jul 2016	Aug 2016	Sep 2016	Oct 2016	Nov 2016	
ESSEX	Essex Central	CPS	87	72	82	85	108	101	108	112	75	77	91	105	94	1,197
		CWS	37	39	43	37	42	38	41	23	27	27	24	39	43	460
		Total	124	111	125	122	150	139	149	135	102	104	115	144	137	1,657
	Essex North	CPS	54	66	53	73	75	48	59	54	58	57	59	61	77	794
		CWS	21	30	29	25	35	21	19	24	29	14	27	26	27	327
		Total	75	96	82	98	110	69	78	78	87	71	86	87	104	1,121
	Essex South	CPS	58	56	63	79	66	56	60	62	47	46	55	67	58	773
		CWS	16	17	27	22	26	26	24	34	19	21	25	26	25	308
		Total	74	73	90	101	92	82	84	96	66	67	80	93	83	1081
	Newark Center City	CPS	82	78	91	95	87	110	97	95	64	69	86	91	79	1124
		CWS	36	39	26	30	42	45	34	25	24	25	28	33	36	423
		Total	118	117	117	125	129	155	131	120	88	94	114	124	115	1547
	Newark Northeast	CPS	81	65	92	89	99	115	93	72	56	94	90	86	64	1096
		CWS	34	33	39	30	36	27	47	24	22	29	28	44	23	416
		Total	115	98	131	119	135	142	140	96	78	123	118	130	87	1512
Newark South	CPS	106	92	107	96	104	121	87	80	80	84	79	95	94	1225	
	CWS	48	38	33	40	32	35	48	39	33	30	34	40	39	489	
	Total	154	130	140	136	136	156	135	119	113	114	113	135	133	1714	
County Totals	CPS	468	429	488	517	539	551	504	475	380	427	460	505	466	6209	
	CWS	192	196	197	184	213	192	213	169	154	146	166	208	193	2423	
	Total	660	625	685	701	752	743	717	644	534	573	626	713	659	8632	
GLOUCESTER	Gloucester East	CPS	91	101	97	93	112	99	84	89	75	84	84	93	94	1196
		CWS	17	25	35	24	38	31	26	26	28	26	23	30	24	353
		Total	108	126	132	117	150	130	110	115	103	110	107	123	118	1549
	Gloucester West	CPS	103	109	91	102	106	115	87	85	90	79	110	123	84	1284
		CWS	34	26	28	33	29	22	36	34	19	34	27	20	22	364
		Total	137	135	119	135	135	137	123	119	109	113	137	143	106	1648
	County Totals	CPS	194	210	188	195	218	214	171	174	165	163	194	216	178	2480
		CWS	51	51	63	57	67	53	62	60	47	60	50	50	46	717
		Total	245	261	251	252	285	267	233	234	212	223	244	266	224	3197
HUDSON	Hudson Central	CPS	59	79	75	89	74	67	83	52	61	56	72	82	65	914
		CWS	16	25	23	28	25	31	23	34	21	10	32	33	22	323
		Total	75	104	98	117	99	98	106	86	82	66	104	115	87	1237
	Hudson North	CPS	74	87	95	77	96	88	101	77	62	52	81	99	79	1068
		CWS	29	30	37	35	34	27	31	30	23	18	30	29	29	382
		Total	103	117	132	112	130	115	132	107	85	70	111	128	108	1450
	Hudson South	CPS	61	93	60	81	60	68	86	71	52	56	71	68	81	908
		CWS	22	28	20	25	23	21	45	30	28	30	24	34	41	371
		Total	83	121	80	106	83	89	131	101	80	86	95	102	122	1279
	Hudson West	CPS	60	74	87	90	71	79	87	84	49	41	67	78	52	919
		CWS	21	15	27	25	29	22	25	22	8	16	26	27	20	283
		Total	81	89	114	115	100	101	112	106	57	57	93	105	72	1202
	County Totals	CPS	254	333	317	337	301	302	357	284	224	205	291	327	277	3809
		CWS	88	98	107	113	111	101	124	116	80	74	112	123	112	1359
		Total	342	431	424	450	412	403	481	400	304	279	403	450	389	5168
HUNTERDON	Hunterdon	CPS	27	27	35	41	33	49	29	33	28	25	33	25	28	413
		CWS	10	12	18	17	13	13	9	9	8	13	11	11	18	162
		Total	37	39	53	58	46	62	38	42	36	38	44	36	46	575
	County Totals	CPS	27	27	35	41	33	49	29	33	28	25	33	25	28	413
		CWS	10	12	18	17	13	13	9	9	8	13	11	11	18	162
Total	37	39	53	58	46	62	38	42	36	38	44	36	46	575		
MERCER	Mercer North	CPS	79	89	91	98	100	95	93	103	92	89	105	91	122	1247
		CWS	46	33	37	29	33	23	27	32	21	27	48	24	27	407
		Total	125	122	128	127	133	118	120	135	113	116	153	115	149	1654
	Mercer South	CPS	98	100	102	108	102	121	124	91	81	91	74	83	98	1273
		CWS	31	30	35	28	41	39	38	29	33	27	45	32	33	441
		Total	129	130	137	136	143	160	162	120	114	118	119	115	131	1714
	County Totals	CPS	177	189	193	206	202	216	217	194	173	180	179	174	220	2520
CWS		77	63	72	57	74	62	65	61	54	54	93	56	60	848	
Total		254	252	265	263	276	278	282	255	227	234	272	230	280	3368	

Data in this report is preliminary and may differ from any final report. This report is produced to ensure continuous quality improvement throughout DCF.



Table 5: Monthly Count of CPS Reports and CWS Referrals Assigned to CP&P Local Offices

County	Local Office	Type of Referral	Nov 2015	Dec 2015	Jan 2016	Feb 2016	Mar 2016	Apr 2016	May 2016	Jun 2016	Jul 2016	Aug 2016	Sep 2016	Oct 2016	Nov 2016	Total	
MIDDLESEX	Middlesex Central	CPS	66	91	70	78	77	72	97	80	57	56	103	93	73	1013	
		CWS	20	27	25	23	25	32	31	26	19	16	15	24	14	297	
		Total	86	118	95	101	102	104	128	106	76	72	118	117	87	1310	
	Middlesex Coastal	CPS	110	119	104	129	152	141	136	101	107	89	111	128	106	1533	
		CWS	38	33	41	46	39	39	29	35	26	36	35	40	33	470	
		Total	148	152	145	175	191	180	165	136	133	125	146	168	139	2003	
	Middlesex West	CPS	118	114	132	131	133	151	135	117	90	95	123	130	114	1583	
		CWS	35	51	47	32	53	57	42	28	26	39	39	34	39	522	
		Total	153	165	179	163	186	208	177	145	116	134	162	164	153	2105	
	County Totals	CPS	294	324	306	338	362	364	368	298	254	240	337	351	293	4129	
		CWS	93	111	113	101	117	128	102	89	71	91	89	98	86	1289	
		Total	387	435	419	439	479	492	470	387	325	331	426	449	379	5418	
MONMOUTH	Monmouth North	CPS	134	135	135	184	145	150	165	154	105	128	137	156	142	1870	
		CWS	50	47	35	44	38	47	40	36	29	49	43	56	42	556	
		Total	184	182	170	228	183	197	205	190	134	177	180	212	184	2426	
	Monmouth South	CPS	118	95	115	130	137	124	121	127	102	118	134	127	112	1560	
		CWS	41	31	43	55	41	52	40	36	36	32	33	43	36	519	
		Total	159	126	158	185	178	176	161	163	138	150	167	170	148	2079	
	County Totals	CPS	252	230	250	314	282	274	286	281	207	246	271	283	254	3430	
		CWS	91	78	78	99	79	99	80	72	65	81	76	99	78	1075	
		Total	343	308	328	413	361	373	366	353	272	327	347	382	332	4505	
	MORRIS	Morris East	CPS	68	47	73	77	81	63	74	75	48	37	73	88	79	883
			CWS	27	27	24	34	27	23	35	22	22	11	22	29	31	334
			Total	95	74	97	111	108	86	109	97	70	48	95	117	110	1217
Morris West		CPS	90	98	114	83	73	98	102	86	56	77	90	92	74	1133	
		CWS	31	43	27	34	36	38	36	45	20	28	40	36	30	444	
		Total	121	141	141	117	109	136	138	131	76	105	130	128	104	1577	
County Totals		CPS	158	145	187	160	154	161	176	161	104	114	163	180	153	2016	
		CWS	58	70	51	68	63	61	71	67	42	39	62	65	61	778	
		Total	216	215	238	228	217	222	247	228	146	153	225	245	214	2794	
OCEAN		Ocean North	CPS	161	125	142	146	150	157	180	152	142	142	130	165	151	1943
			CWS	57	43	63	50	43	42	46	44	29	39	43	49	41	589
			Total	218	168	205	196	193	199	226	196	171	181	173	214	192	2532
	Ocean South	CPS	135	130	151	137	130	127	145	120	115	117	138	138	133	1716	
		CWS	48	38	47	45	43	39	44	38	30	46	42	56	39	555	
		Total	183	168	198	182	173	166	189	158	145	163	180	194	172	2271	
	County Totals	CPS	296	255	293	283	280	284	325	272	257	259	268	303	284	3659	
		CWS	105	81	110	95	86	81	90	82	59	85	85	105	80	1144	
		Total	401	336	403	378	366	365	415	354	316	344	353	408	364	4803	
	PASSAIC	Passaic Central	CPS	163	178	144	202	169	166	175	183	122	121	152	171	176	2122
			CWS	66	68	68	89	89	66	82	55	41	42	53	71	82	872
			Total	229	246	212	291	258	232	257	238	163	163	205	242	258	2994
Passaic North		CPS	141	137	152	159	170	162	151	120	96	121	129	150	129	1817	
		CWS	52	66	57	54	82	61	48	43	40	47	63	79	52	744	
		Total	193	203	209	213	252	223	199	163	136	168	192	229	181	2561	
County Totals		CPS	304	315	296	361	339	328	326	303	218	242	281	321	305	3939	
		CWS	118	134	125	143	171	127	130	98	81	89	116	150	134	1616	
		Total	422	449	421	504	510	455	456	401	299	331	397	471	439	5555	
SALEM		Salem	CPS	75	58	72	43	78	61	64	57	52	48	63	59	51	781
			CWS	14	23	22	24	16	28	18	23	11	19	26	19	15	258
			Total	89	81	94	67	94	89	82	80	63	67	89	78	66	1039
	County Totals	CPS	75	58	72	43	78	61	64	57	52	48	63	59	51	781	
		CWS	14	23	22	24	16	28	18	23	11	19	26	19	15	258	
		Total	89	81	94	67	94	89	82	80	63	67	89	78	66	1039	
SOMERSET	Somerset	CPS	121	104	104	120	124	115	136	129	107	88	115	119	136	1518	
		CWS	36	39	37	40	41	37	33	31	32	24	34	39	48	471	
		Total	157	143	141	160	165	152	169	160	139	112	149	158	184	1989	
	County Totals	CPS	121	104	104	120	124	115	136	129	107	88	115	119	136	1518	
		CWS	36	39	37	40	41	37	33	31	32	24	34	39	48	471	
Total	157	143	141	160	165	152	169	160	139	112	149	158	184	1989			

Data in this report is preliminary and may differ from any final report. This report is produced to ensure continuous quality improvement throughout DCF.



Table 5: Monthly Count of CPS Reports and CWS Referrals Assigned to CP&P Local Offices

County	Local Office	Type of Referral	Month													Total
			Nov 2015	Dec 2015	Jan 2016	Feb 2016	Mar 2016	Apr 2016	May 2016	Jun 2016	Jul 2016	Aug 2016	Sep 2016	Oct 2016	Nov 2016	
SUSSEX	Sussex	CPS	72	68	82	83	76	77	71	68	74	69	79	55	70	944
		CWS	31	27	13	30	29	17	17	23	16	18	22	25	26	294
		Total	103	95	95	113	105	94	88	91	90	87	101	80	96	1238
	County Totals	CPS	72	68	82	83	76	77	71	68	74	69	79	55	70	944
		CWS	31	27	13	30	29	17	17	23	16	18	22	25	26	294
		Total	103	95	95	113	105	94	88	91	90	87	101	80	96	1238
UNION	Union Central	CPS	64	71	74	85	78	89	105	67	60	55	78	84	82	992
		CWS	14	27	32	29	30	24	23	29	24	27	26	22	28	335
		Total	78	98	106	114	108	113	128	96	84	82	104	106	110	1327
	Union East	CPS	68	91	75	78	99	99	100	79	67	66	74	77	78	1051
		CWS	26	34	25	30	25	28	25	28	26	23	28	35	33	366
		Total	94	125	100	108	124	127	125	107	93	89	102	112	111	1417
	Union West	CPS	58	65	65	79	84	73	87	60	57	49	90	78	65	910
		CWS	27	30	28	30	34	23	33	32	21	24	27	20	26	355
		Total	85	95	93	109	118	96	120	92	78	73	117	98	91	1265
	County Totals	CPS	190	227	214	242	261	261	292	206	184	170	242	239	225	2953
		CWS	67	91	85	89	89	75	81	89	71	74	81	77	87	1056
		Total	257	318	299	331	350	336	373	295	255	244	323	316	312	4009
WARREN	Warren	CPS	58	55	72	64	60	68	74	67	49	68	76	79	68	858
		CWS	23	23	21	23	17	31	32	21	13	10	21	18	16	269
		Total	81	78	93	87	77	99	106	88	62	78	97	97	84	1127
	County Totals	CPS	58	55	72	64	60	68	74	67	49	68	76	79	68	858
		CWS	23	23	21	23	17	31	32	21	13	10	21	18	16	269
		Total	81	78	93	87	77	99	106	88	62	78	97	97	84	1127
County CPS Referral Total		CPS	4,098	4,252	4,378	4,657	4,632	4,714	4,882	4,237	3,453	3,653	4,328	4,571	4,328	56,183
County CWS Referral Total		CWS	1,430	1,492	1,526	1,573	1,618	1,494	1,573	1,411	1,146	1,254	1,485	1,572	1,494	19,068
County Referral Total		Total	5,528	5,744	5,904	6,230	6,250	6,208	6,455	5,648	4,599	4,907	5,813	6,143	5,822	75,251
Central Region IAIU	CPS	56	62	44	53	46	59	55	53	33	54	52	63	57	687	
	CWS	0	0	0	0	0	0	0	0	0	0	0	0	0	0	
	Total	56	62	44	53	46	59	55	53	33	54	52	63	57	687	
Metro Region IAIU	CPS	48	46	43	60	64	60	68	61	36	32	46	65	48	677	
	CWS	0	0	0	0	0	0	0	0	0	0	0	0	0	0	
	Total	48	46	43	60	64	60	68	61	36	32	46	65	48	677	
Northern Region IAIU	CPS	58	44	58	58	66	71	70	66	27	45	62	76	70	771	
	CWS	0	0	0	0	0	0	0	0	0	0	0	0	0	0	
	Total	58	44	58	58	66	71	70	66	27	45	62	76	70	771	
Southern Region IAIU	CPS	72	61	79	64	76	90	73	92	44	72	66	68	88	945	
	CWS	0	0	0	0	0	0	0	0	0	0	0	0	1	1	
	Total	72	61	79	64	76	90	73	92	44	72	66	68	89	946	
IAIU CPS Subtotal		CPS	234	213	224	235	252	280	266	272	140	203	226	272	263	3,080
IAIU CWS Subtotal		CWS	0	0	0	0	0	0	0	0	0	0	0	1	1	
IAIU Subtotal		Total	234	213	224	235	252	280	266	272	140	203	226	272	264	3,081
County and IAIU CPS Subtotal		CPS	4,332	4,465	4,602	4,892	4,884	4,994	5,148	4,509	3,593	3,856	4,554	4,843	4,591	59,263
County and IAIU CWS Subtotal		CWS	1,430	1,492	1,526	1,573	1,618	1,494	1,573	1,411	1,146	1,254	1,485	1,572	1,495	19,069
Unable to Determine⁽¹⁾		Total	131	114	128	126	165	115	149	140	110	137	168	140	143	1,766
Other Offices		Total	1	3	1	5	2	4	1	3	1	1	6	2	0	30
Grand Total		Total	5,894	6,074	6,257	6,596	6,669	6,607	6,871	6,063	4,850	5,248	6,213	6,557	6,229	80,128

⁽¹⁾CPS Reports or CWS Referrals not assigned to an office through the Assignment Designee, but were assigned to an office for an assessment or investigation.