



Child Protection and Permanency

Monthly Screening and Investigation Report November 2023

Christine Norbut Beyer, MSW
Commissioner



Table of Contents

Table 1: NJ State Central Registry Activity: Monthly Child Abuse and Neglect Hotline Calls, Intakes and Assignments to Child Protection & Permanency (CP&P) Offices

Chart 1: CP&P Annual Trends in Child Protection Services (CPS) Reports and Child Welfare Services (CWS) Referrals

Table 2: Assignments to CP&P Offices: CPS Reports and CWS Referrals

Table 3: Source of CPS Reports and CWS Referrals

Table 4: Monthly Count of CPS Reports and CWS Referrals Assigned to Counties

Table 5: Monthly Count of CPS Reports and CWS Referrals Assigned to CP&P Local Offices



Table 1: NJ State Central Registry Activity: Monthly Child Abuse and Neglect Hotline Calls, Intakes and Assignments to CP&P Offices^{1,2,7}

2022-2023	Hotline Call Activity				Intakes Recorded in NJ SPIRIT ^{6,8}													Assignments to CP&P Offices					
	Total Calls to SCR ³	Abandon Calls ⁴	Average Time to Answer (seconds)	Resulting NJS Intakes ⁵	CPS Reports		CWS Referrals		No Action Required (NAR)		Related Information (RI)		Information & Referral (I&R)		Information Only (IO)		Unusual Incident (UIRS)		CPS Reports		CWS Referrals		Total
					n	%	n	%	n	%	n	%	n	%	n	%	n	%	n	%	n	%	
November 2022	12,599	1,217	156	12,974	4,852	37.4%	762	5.9%	189	1.5%	2,998	23.1%	2,658	20.5%	1,509	11.6%	6	0.0%	4,852	86.4%	762	13.6%	5,614
December 2022	11,707	673	88	12,389	4,560	36.8%	730	5.9%	125	1.0%	2,922	23.6%	2,471	19.9%	1,579	12.7%	2	0.0%	4,760	86.7%	731	13.3%	5,491
January 2023	14,498	168	188	14,206	5,215	36.7%	962	6.8%	173	1.2%	3,234	22.8%	3,011	21.2%	1,609	11.3%	2	0.0%	5,463	85.0%	962	15.0%	6,425
February 2023	13,385	1,497	162	13,589	4,921	36.2%	893	6.6%	143	1.1%	3,234	23.8%	2,923	21.5%	1,473	10.8%	2	0.0%	5,141	85.2%	891	14.8%	6,032
March 2023	15,364	1,371	112	15,750	6,064	38.5%	1,119	7.1%	191	1.2%	3,177	20.2%	3,377	21.4%	1,817	11.5%	5	0.0%	6,064	84.4%	1,121	15.6%	7,185
April 2023	12,569	866	73	13,291	5,001	37.6%	870	6.5%	197	1.5%	3,068	23.1%	2,423	18.2%	1,728	13.0%	4	0.0%	5,001	85.2%	870	14.8%	5,871
May 2023	14,992	1,368	112	15,567	6,074	39.0%	1,053	6.8%	167	1.1%	3,347	21.5%	2,998	19.3%	1,921	12.3%	7	0.0%	6,074	85.2%	1,053	14.8%	7,127
June 2023	12,861	1,069	115	13,488	4,999	37.1%	955	7.1%	155	1.1%	3,075	22.8%	2,522	18.7%	1,778	13.2%	4	0.0%	4,999	84.0%	955	16.0%	5,954
July 2023	11,377	732	90	12,202	4,576	37.5%	834	6.8%	201	1.6%	2,834	23.2%	1,996	16.4%	1,758	14.4%	3	0.0%	4,576	84.6%	834	15.4%	5,410
August 2023	11,208	536	62	12,127	4,484	37.0%	978	8.1%	229	1.9%	2,656	21.9%	2,081	17.2%	1,692	14.0%	7	0.1%	4,484	82.0%	981	18.0%	5,465
September 2023	12,809	612	49	13,859	5,034	36.3%	1,000	7.2%	199	1.4%	3,166	22.8%	2,720	19.6%	1,739	12.5%	1	0.0%	5,034	83.4%	1,000	16.6%	6,034
October 2023	14,337	619	45	15,546	5,837	37.5%	1,131	7.3%	215	1.4%	3,454	22.2%	2,974	19.1%	1,935	12.4%	0	0.0%	5,837	83.8%	1,131	16.2%	6,968
November 2023	13,338	704	50	14,269	5,195	36.4%	934	6.5%	158	1.1%	3,214	22.5%	2,469	17.3%	2,297	16.1%	2	0.0%	5,195	84.8%	934	15.2%	6,129
<i>Averages</i>	13,157	879		13,789	5,139	37.3%	940	6.8%	180	1.3%	3,106	22.5%	2,663	19.3%	1,757	12.7%	3	0.0%	5,191	84.7%	940	15.3%	6,131
Overall Totals	171,044	11,432		179,257	66,812	37.3%	12,221	6.8%	2,342	1.3%	40,379	22.5%	34,623	19.3%	22,835	12.7%	45	0.0%	67,480	84.7%	12,225	15.3%	79,705

¹Comes from three distinct sources: (1) the Automatic Call Distribution (ACD) phone system; which keeps a count of the number of calls and call routing; (2) Monthly NJSpirit Intakes; which record decision making on calls received by hotline screeners, and (3)

²The number of Intakes, CPS Reports, and CWS Referrals are based on an extract from NJSpirit.

Data extracted by the Office of Research, Evaluation, and Reporting on **December 08, 2023** includes all Intakes, CPS Reports, and CWS Referrals received from **November 01, 2023 through November 30, 2023**.

³The number calls received through the ACD System that were directed to a screener from any call-in phone number.

⁴The number of calls received through the ACD System that are abandoned either while waiting in queue or while ringing.

⁵The number of Intakes entered in NJSpirit from the number of calls received.

⁶The number of Intakes recorded in NJSpirit, by type of Intake. There is not a one-to-one relationship between an ACD call and an Intake; multiple calls to State Central Registry (SCR) may result in a single Intake, or one call may result in multiple Intakes.

⁷Intake: The process of documenting: a report of alleged abuse or neglect of a child (CPS); a request for services on behalf of a child, or a referral of a child for services (CWS); a call in which the caller provides additional or clarifying information about a current

CP&P Annual Trends in CPS Reports and CWS Referrals

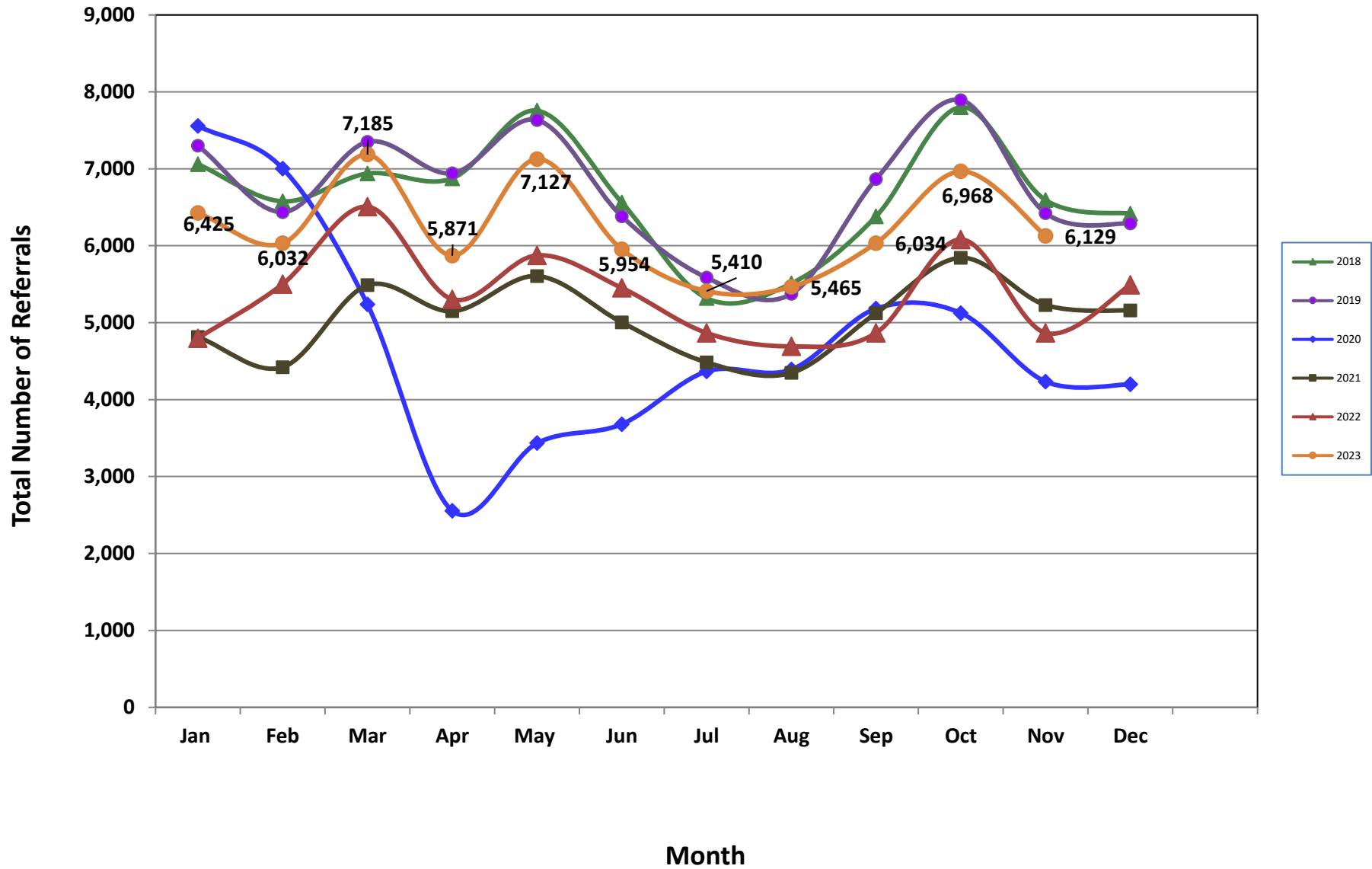


Table 2: Assignments to CP&P Offices: CPS Reports and CWS Referrals¹

Intake Date ³		CPS Reports ²	CWS Referrals ²	Total Assignments ²
2018	Jan 2018	5,276	1,784	7,060
	Feb 2018	4,933	1,644	6,577
	Mar 2018	5,212	1,727	6,939
	Apr 2018	5,275	1,601	6,876
	May 2018	5,920	1,836	7,756
	Jun 2018	4,948	1,615	6,563
	Jul 2018	4,011	1,308	5,319
	Aug 2018	4,102	1,408	5,510
	Sep 2018	4,748	1,634	6,382
	Oct 2018	5,790	2,011	7,801
	Nov 2018	4,973	1,620	6,593
	Dec 2018	4,891	1,527	6,418
	Total	60,079	19,715	79,794
2019	Jan 2019	5,443	1,858	7,301
	Feb 2019	4,811	1,628	6,439
	Mar 2019	5,677	1,824	7,501
	Apr 2019	5,313	1,630	6,943
	May 2019	5,853	1,781	7,634
	Jun 2019	4,874	1,509	6,383
	Jul 2019	4,277	1,309	5,586
	Aug 2019	4,068	1,306	5,374
	Sep 2019	5,315	1,551	6,866
	Oct 2019	5,968	1,926	7,894
	Nov 2019	4,991	1,432	6,423
	Dec 2019	4,855	1,434	6,289
	Total	61,445	19,188	80,633
2020	Jan 2020	5,715	1,842	7,557
	Feb 2020	5,380	1,624	7,004
	Mar 2020	4,172	1,065	5,237
	Apr 2020	2,149	407	2,556
	May 2020	2,897	537	3,434
	Jun 2020	3,045	636	3,681
	Jul 2020	3,628	738	4,366
	Aug 2020	3,569	822	4,391
	Sep 2020	4,153	1,030	5,183
	Oct 2020	4,257	868	5,125
	Nov 2020	3,564	670	4,234
	Dec 2020	3,517	681	4,198
	Total	46,046	10,920	56,966

Table 2: Assignments to CP&P Offices: CPS Reports and CWS Referrals¹

Intake Date ³		CPS Reports ²	CWS Referrals ²	Total Assignments ²
2021	Jan 2021	4,018	794	4,812
	Feb 2021	3,767	655	4,422
	Mar 2021	4,657	830	5,487
	Apr 2021	4,398	750	5,148
	May 2021	4,870	736	5,606
	Jun 2021	4,412	592	5,004
	Jul 2021	3,914	570	4,484
	Aug 2021	3,866	482	4,348
	Sep 2021	4,559	564	5,123
	Oct 2021	5,213	630	5,843
	Nov 2021	4,689	541	5,230
	Dec 2021	4,601	557	5,158
	Total	52,964	7,701	60,665
2022	Jan 2022	4,274	523	4,797
	Feb 2022	4,867	635	5,502
	Mar 2022	5,780	727	6,507
	Apr 2022	4,669	636	5,305
	May 2022	5,228	647	5,875
	Jun 2022	4,854	598	5,452
	Jul 2022	4,277	590	4,867
	Aug 2022	4,103	589	4,692
	Sep 2022	4,810	680	5,490
	Oct 2022	5,356	725	6,081
	Nov 2022	4,852	762	5,614
	Dec 2022	4,760	731	5,491
	Total	57,830	7,843	65,673
2023	Jan 2023	5,461	962	6,423
	Feb 2023	5,141	891	6,032
	Mar 2023	6,064	1,121	7,185
	Apr 2023	5,001	870	5,871
	May 2023	6,074	1,053	7,127
	Jun 2023	4,999	955	5,954
	Jul 2023	4,576	834	5,410
	Aug 2023	4,484	981	5,465
	Sep 2023	5,034	1,000	6,034
	Oct 2023	5,837	1,131	6,968
	Nov 2023	5,195	934	6,129
	Total	57,866	9,798	62,469
	Grand Total		336,230	75,165

¹Source of Data: NJ SPIRIT

²A CPS Report or a CWS Referral may include multiple children in a family, with one or more allegation or request for services. In these cases, each CPS Report or CWS Referral is counted once - the CPS Report or the CWS Referral is the unit of analysis rather than the child.

³Prior to January 2014, the number of CPS Reports and CWS Referrals was based on the type of assignment of the CPS Report or CWS Referral. Beginning in January 2014, the number of CPS Reports and CWS Referrals is based on the number of CPS Reports and CWS Referrals received.

Table 3: Source of CPS Reports and CWS Referrals

CPS Reports and CWS Referrals	Source	Nov 2022	Dec 2022	Jan 2023	Feb 2023	Mar 2023	Apr 2023	May 2023	Jun 2023	Jul 2023	Aug 2023	Sep 2023	Oct 2023	Nov 2023	13 Month Total		
	School Staff	1,394	1,302	1,809	1,776	2,267	1,242	1,923	885	246	136	1,203	1,990	1,596	26%	17,769	22%
	Healthcare Provider	825	836	843	865	970	893	916	910	884	940	793	868	785	13%	11,328	14%
	Law Enforcement	1,422	1,416	1,525	1,391	1,548	1,566	1,820	1,782	1,928	1,775	1,737	1,744	1,573	26%	21,227	27%
	Government Agency	240	231	298	273	309	261	316	310	294	392	343	295	305	5%	3,867	5%
	Parent	342	383	419	351	442	439	460	459	435	540	488	485	447	7%	5,690	7%
	Relative/Friend/Neighbor	313	291	304	267	338	331	413	376	377	410	343	348	300	5%	4,411	6%
	Anonymous	458	416	489	435	529	435	544	476	452	431	471	530	440	7%	6,106	8%
	CP&P	45	42	58	60	76	57	64	67	62	68	69	59	54	1%	781	1%
	Court/Legal	113	122	135	121	172	114	145	140	116	144	109	120	99	2%	1,650	2%
	Community Group/Individual	165	163	217	209	184	171	187	218	229	233	180	199	189	3%	2,544	3%
	Facility Staff (incl Correctional Facility)	45	43	50	38	51	65	71	56	59	67	49	49	45	1%	688	1%
	Child (Self)	25	24	42	30	31	31	42	36	28	33	37	38	38	1%	435	1%
	Other	199	208	210	190	240	246	208	223	271	275	182	222	232	4%	2,906	4%
	Daycare/Babysitter	28	14	26	26	28	20	18	16	29	21	30	21	26	0%	303	0%
	Total	5,614	5,491	6,425	6,032	7,185	5,871	7,127	5,954	5,410	5,465	6,034	6,968	6,129		79,705	

Table 4: Monthly Count of CPS Reports and CWS Referrals Assigned to Counties

County														Average Number of Assignments Last 13 Months	Numerical Difference
	Nov 2022	Dec 2022	Jan 2023	Feb 2023	Mar 2023	Apr 2023	May 2023	Jun 2023	Jul 2023	Aug 2023	Sep 2023	Oct 2023	Nov 2023		
Atlantic	197	246	281	222	289	255	296	258	265	232	258	333	273	262	-60
Bergen	350	344	407	398	438	321	418	357	305	312	339	430	400	371	-30
Burlington	332	288	335	300	347	301	340	285	273	305	310	374	333	317	-41
Camden	472	461	486	481	579	483	556	502	449	463	487	535	513	497	-22
Cape May	69	65	74	67	78	73	92	71	61	64	71	71	64	71	-7
Cumberland	183	185	215	171	214	191	226	208	179	208	174	207	211	198	4
Essex	562	548	633	612	731	568	739	566	530	569	639	692	584	613	-108
Gloucester	248	235	265	233	273	225	286	239	232	246	244	298	238	251	-60
Hudson	342	370	408	388	513	384	451	386	337	345	406	436	395	397	-41
Hunterdon	49	39	53	41	48	37	47	46	60	38	38	53	47	46	-6
Mercer	240	227	245	288	335	277	286	249	252	264	261	368	256	273	-112
Middlesex	422	405	503	453	561	389	526	420	376	398	436	466	429	445	-37
Monmouth	317	277	323	321	350	294	348	308	307	271	279	362	295	312	-67
Morris	179	195	237	221	232	203	224	219	201	166	219	226	242	213	16
Ocean	352	341	382	350	484	388	450	400	344	357	402	405	409	390	4
Passaic	326	348	420	385	435	405	510	425	313	320	422	462	374	396	-88
Salem	64	73	83	65	75	68	81	58	68	58	63	84	65	70	-19
Somerset	137	132	171	173	180	146	174	152	116	119	147	176	126	150	-50
Sussex	103	85	115	87	135	90	129	108	100	97	95	104	93	103	-11
Union	301	293	345	369	397	328	404	322	296	292	302	360	343	335	-17
Warren	80	81	108	100	105	111	113	89	95	92	94	88	104	97	16
County Subtotals	5,325	5,238	6,089	5,725	6,799	5,537	6,696	5,668	5,159	5,216	5,686	6,530	5,794	5,805	-736
Central Region IAIU	56	46	53	54	77	64	89	57	49	58	47	82	60	61	-22
Metro Region IAIU	33	24	44	42	57	32	67	43	32	32	58	86	68	48	-18
Northern Region IAIU	50	50	57	36	69	63	81	33	29	20	59	71	50	51	-21
Southern Region IAIU	50	52	81	76	72	66	84	62	59	66	79	86	71	70	-15
IAIU Subtotals	189	172	235	208	275	225	321	195	169	176	243	325	249	229	-76
¹ Unable to Determine	99	81	97	99	109	102	107	89	81	73	105	109	86	95	-23
Other Offices	1	1	2	0	2	7	3	2	1	0	0	4	0	2	-4
Grand Total	5,614	5,492	6,423	6,032	7,185	5,871	7,127	5,954	5,410	5,465	6,034	6,968	6,129	6,131	-839

¹CPS Reports or CWS Referrals not assigned to an office through the Assignment Designee, but were assigned to an office for an assessment or investigation.

Table 5: Monthly Count of CPS Reports and CWS Referrals Assigned to CP&P Local Offices

County	Local Office	Type of Referral	Nov 2022	Dec 2022	Jan 2023	Feb 2023	Mar 2023	Apr 2023	May 2023	Jun 2023	Jul 2023	Aug 2023	Sep 2023	Oct 2023	Nov 2023	Total
ATLANTIC	Atlantic East	CPS	90	111	114	105	114	110	130	105	114	101	125	138	112	1,469
		CWS	20	20	28	22	35	23	26	24	28	27	26	41	33	353
		Total	110	131	142	127	149	133	156	129	142	128	151	179	145	1,822
	Atlantic West	CPS	75	92	112	85	123	100	126	106	102	81	87	126	112	1,327
		CWS	12	20	27	10	17	22	14	23	21	23	20	28	16	253
		Total	87	112	139	95	140	122	140	129	123	104	107	154	128	1,580
	County Totals	CPS	165	203	226	190	237	210	256	211	216	182	212	264	224	2,796
Total		197	243	281	222	289	255	296	258	265	232	258	333	273	3,402	
BERGEN	Bergen Central	CPS	145	126	143	149	153	116	139	144	105	107	120	149	150	1,746
		CWS	21	25	20	21	28	19	24	27	14	15	33	22	29	298
		Total	166	151	163	170	181	135	163	171	119	122	153	171	179	2,044
	Bergen South	CPS	159	168	214	194	215	151	215	166	155	155	166	224	192	2,374
		CWS	25	25	30	34	43	35	40	20	31	35	20	35	29	402
		Total	184	193	244	228	258	186	255	186	186	190	186	259	221	2,776
	County Totals	CPS	304	294	357	343	368	267	354	310	260	262	286	373	342	4,120
Total		350	344	407	398	439	321	418	357	305	312	339	430	400	4,820	
BURLINGTON	Burlington East	CPS	133	117	146	126	142	115	150	109	112	126	116	149	136	1,677
		CWS	20	25	32	22	28	34	20	26	26	19	24	29	30	335
		Total	153	142	178	148	170	149	170	135	138	145	140	178	166	2,012
	Burlington West	CPS	154	122	128	129	146	135	146	124	109	127	134	156	126	1,736
		CWS	25	24	29	23	32	17	24	26	26	33	36	40	41	376
		Total	179	146	157	152	178	152	170	150	135	160	170	196	167	2,112
	County Totals	CPS	287	239	274	255	288	250	296	233	221	253	250	305	262	3,413
Total		332	288	335	300	348	301	340	285	273	305	310	374	333	4,124	
CAMDEN	Camden Central	CPS	97	97	116	107	141	96	123	118	102	112	98	110	106	1,423
		CWS	15	21	18	19	22	26	22	24	22	18	32	28	22	289
		Total	112	118	134	126	163	122	145	142	124	130	130	138	128	1,712
	Camden East	CPS	121	96	110	102	105	106	124	91	87	94	115	111	95	1,357
		CWS	16	15	12	27	19	16	16	19	29	18	25	20	12	244
		Total	137	111	122	129	124	122	140	110	116	112	140	131	107	1,601
	Camden North	CPS	87	101	89	98	118	108	101	110	76	92	95	107	114	1,296
		CWS	32	20	19	25	33	16	17	26	25	29	16	30	27	315
		Total	119	121	108	123	151	124	118	136	101	121	111	137	141	1,611
	Camden South	CPS	86	92	103	92	114	94	122	91	86	83	90	112	114	1,279
		CWS	18	19	19	11	26	21	31	23	22	17	16	17	23	263
		Total	104	111	122	103	140	115	153	114	108	100	106	129	137	1,542
	County Totals	CPS	391	386	418	399	478	404	470	410	351	381	398	440	429	5,355
Total		472	461	486	481	578	483	556	502	449	463	487	535	513	6,466	
CAPE MAY	Cape May	CPS	63	55	66	55	65	57	73	52	55	53	56	62	56	768
		CWS	6	8	8	12	13	16	19	19	6	11	15	9	8	150
		Total	69	63	74	67	78	73	92	71	61	64	71	71	64	918
	County Totals	CPS	63	55	66	55	65	57	73	52	55	53	56	62	56	768
		Total	69	63	74	67	78	73	92	71	61	64	71	71	64	918
CUMBERLAND	Cumberland East	CPS	78	61	87	62	65	58	78	62	71	85	58	78	72	915
		CWS	3	13	17	15	16	9	18	24	11	14	10	8	10	168
		Total	81	74	104	77	81	67	96	86	82	99	68	86	82	1,083
	Cumberland West	CPS	95	98	99	81	111	103	120	97	83	89	87	98	117	1,278
		CWS	7	13	12	13	22	21	10	26	14	20	19	23	12	212
		Total	102	111	111	94	133	124	130	123	97	109	106	121	129	1,490
	County Totals	CPS	173	159	186	143	176	161	198	159	154	174	145	176	189	2,193
Total		183	185	215	171	214	191	226	209	179	208	174	207	211	2,573	

Table 5: Monthly Count of CPS Reports and CWS Referrals Assigned to CP&P Local Offices

County	Local Office	Type of Referral	Nov 2022	Dec 2022	Jan 2023	Feb 2023	Mar 2023	Apr 2023	May 2023	Jun 2023	Jul 2023	Aug 2023	Sep 2023	Oct 2023	Nov 2023	Total
ESSEX	Essex Central	CPS	70	73	69	71	88	68	85	53	63	70	86	78	64	938
		CWS	19	16	13	16	21	10	30	19	9	24	20	20	12	229
		Total	89	89	82	87	109	78	115	72	72	94	106	98	76	1,167
	Essex North	CPS	85	104	101	118	119	94	122	92	69	74	109	124	117	1,328
		CWS	13	15	18	17	16	16	26	24	11	16	24	21	20	237
		Total	98	119	119	135	135	110	148	116	80	90	133	145	137	1,565
	Essex South	CPS	87	93	99	84	105	84	97	84	94	75	77	101	78	1158
		CWS	12	7	23	14	37	24	15	23	11	18	22	26	19	251
		Total	99	100	122	98	142	108	112	107	105	93	99	127	97	1409
	Newark Center City	CPS	77	69	77	71	83	75	95	62	79	81	72	77	85	1003
		CWS	13	12	13	13	17	9	26	13	11	22	22	13	18	202
		Total	90	81	90	84	100	84	121	75	90	103	94	90	103	1205
	Newark Northeast	CPS	82	68	90	89	95	91	109	93	85	69	100	103	76	1150
		CWS	16	14	23	18	21	9	23	20	15	18	15	25	16	233
		Total	98	82	113	107	116	100	132	113	100	87	115	128	92	1383
	Newark South	CPS	76	68	93	81	114	77	101	74	68	75	73	89	66	1055
		CWS	12	8	17	20	15	11	10	9	15	27	19	15	13	191
		Total	88	76	110	101	129	88	111	83	83	102	92	104	79	1246
County Totals	CPS	477	475	529	514	604	489	609	458	458	444	517	572	486	6632	
	CWS	85	72	107	98	127	79	130	108	72	125	122	120	98	1343	
	Total	562	547	636	612	731	568	739	566	530	569	639	692	584	7975	
GLOUCESTER	Gloucester East	CPS	100	97	102	77	113	84	87	93	79	91	84	117	89	1213
		CWS	14	21	16	12	19	15	16	11	8	13	18	24	20	207
		Total	114	118	118	89	132	99	103	104	87	104	102	141	109	1420
	Gloucester West	CPS	114	99	125	123	121	116	150	114	127	118	117	131	104	1559
		CWS	20	18	21	21	20	10	33	21	18	24	25	26	25	282
		Total	134	117	146	144	141	126	183	135	145	142	142	157	129	1841
	County Totals	CPS	214	196	227	200	234	200	237	207	206	209	201	248	193	2772
		CWS	34	39	37	33	39	25	49	32	26	37	43	50	45	489
		Total	248	235	264	233	273	225	286	239	232	246	244	298	238	3261
HUDSON	Hudson Central	CPS	89	85	95	104	113	105	121	106	71	75	92	98	94	1248
		CWS	20	19	13	19	23	20	22	22	21	26	16	15	20	256
		Total	109	104	108	123	136	125	143	128	92	101	108	113	114	1504
	Hudson North	CPS	69	80	86	81	100	85	106	77	76	59	87	93	77	1076
		CWS	9	7	20	18	24	13	15	19	12	15	21	20	19	212
		Total	78	87	106	99	124	98	121	96	88	74	108	113	96	1288
	Hudson South	CPS	53	70	80	60	107	55	71	67	72	71	83	76	85	950
		CWS	12	10	16	12	22	5	13	13	20	15	26	28	12	204
		Total	65	80	96	72	129	60	84	80	92	86	109	104	97	1154
	Hudson West	CPS	76	82	80	78	105	79	91	67	58	70	65	86	71	1008
		CWS	14	17	18	16	19	22	12	15	7	14	16	20	17	207
		Total	90	99	98	94	124	101	103	82	65	84	81	106	88	1215
County Totals	CPS	287	317	341	323	425	324	389	317	277	275	327	353	327	4282	
	CWS	55	53	67	65	88	60	62	69	60	70	79	83	68	879	
	Total	342	370	408	388	513	384	451	386	337	345	406	436	395	5161	
HUNTERDON	Hunterdon	CPS	40	35	46	36	41	32	41	41	48	35	29	44	44	512
		CWS	9	4	7	5	7	5	6	5	12	3	9	9	3	84
		Total	49	39	53	41	48	37	47	46	60	38	38	53	47	596
	County Totals	CPS	40	35	46	36	41	32	41	41	48	35	29	44	44	512
		CWS	9	4	7	5	7	5	6	5	12	3	9	9	3	84
Total	49	39	53	41	48	37	47	46	60	38	38	53	47	596		
MERCER	Mercer North	CPS	108	106	101	124	119	121	140	116	111	105	126	146	113	1536
		CWS	23	17	15	27	15	27	24	18	17	30	15	27	21	276
		Total	131	123	116	151	134	148	164	134	128	135	141	173	134	1812
	Mercer South	CPS	98	96	106	113	172	108	101	97	112	101	93	154	96	1447
		CWS	11	8	23	23	29	21	21	18	12	28	27	41	26	288
		Total	109	104	129	136	201	129	122	115	124	129	120	195	122	1735
	County Totals	CPS	206	202	207	237	291	229	241	213	223	206	219	300	209	2983
CWS		34	25	38	50	44	48	45	36	29	58	42	68	47	564	
Total	240	227	245	287	335	277	286	249	252	264	261	368	256	3547		

Table 5: Monthly Count of CPS Reports and CWS Referrals Assigned to CP&P Local Offices

County	Local Office	Type of Referral	Nov 2022	Dec 2022	Jan 2023	Feb 2023	Mar 2023	Apr 2023	May 2023	Jun 2023	Jul 2023	Aug 2023	Sep 2023	Oct 2023	Nov 2023	Total	
MIDDLESEX	Middlesex Central	CPS	91	102	119	135	150	107	134	100	85	90	120	99	107	1439	
		CWS	15	11	20	15	29	14	30	24	24	22	14	26	26	14	260
		Total	106	113	139	150	179	121	164	124	107	104	146	125	121	1699	
	Middlesex Coastal	CPS	153	139	167	130	160	117	163	143	121	124	119	129	136	1801	
		CWS	16	13	30	23	24	15	27	14	24	35	24	33	26	304	
		Total	169	152	197	153	184	132	190	157	145	159	143	162	162	2105	
	Middlesex West	CPS	131	120	136	134	165	116	136	116	106	114	124	149	120	1667	
		CWS	16	21	32	17	34	20	36	23	18	21	23	30	26	317	
		Total	147	141	168	151	199	136	172	139	124	135	147	179	146	1984	
	County Totals	CPS	375	361	422	399	475	340	433	359	312	328	363	377	363	4907	
		CWS	47	45	82	55	87	49	93	61	64	70	73	89	66	881	
		Total	422	406	504	454	562	389	526	420	376	398	436	466	429	5788	
MONMOUTH	Monmouth North	CPS	158	143	154	160	167	131	173	123	150	121	149	161	142	1932	
		CWS	24	17	26	27	26	24	23	25	29	29	19	33	23	325	
		Total	182	160	180	187	193	155	196	148	179	150	168	194	165	2257	
	Monmouth South	CPS	119	102	113	112	138	114	134	133	114	104	102	131	115	1531	
		CWS	16	15	30	22	19	25	18	27	14	17	9	37	15	264	
		Total	135	117	143	134	157	139	152	160	128	121	111	168	130	1795	
	County Totals	CPS	277	245	267	272	305	245	307	256	264	225	251	292	257	3463	
		CWS	40	32	56	49	45	49	41	52	43	46	28	70	38	589	
		Total	317	277	323	321	350	294	348	308	307	271	279	362	295	4052	
MORRIS	Morris East	CPS	88	83	92	78	83	81	90	88	87	65	100	91	101	1127	
		CWS	13	13	17	16	22	14	10	18	11	8	11	19	13	185	
		Total	101	96	109	94	105	95	100	106	98	73	111	110	114	1312	
	Morris West	CPS	68	89	111	100	104	86	103	101	86	78	86	96	108	1216	
		CWS	10	10	19	27	24	22	21	12	17	15	22	20	20	239	
		Total	78	99	130	127	128	108	124	113	103	93	108	116	128	1455	
	County Totals	CPS	156	172	203	178	187	167	193	189	173	143	186	187	209	2343	
		CWS	23	23	36	43	46	36	31	30	28	23	33	39	33	424	
		Total	179	195	239	221	233	203	224	219	201	166	219	226	242	2767	
OCEAN	Ocean North	CPS	161	165	156	177	220	177	184	184	159	148	192	184	188	2295	
		CWS	28	15	33	23	38	20	40	23	27	29	23	31	24	354	
		Total	189	180	189	200	258	197	224	207	186	177	215	215	212	2649	
	Ocean South	CPS	148	141	170	136	204	160	195	170	136	148	152	166	173	2099	
		CWS	15	20	23	14	22	31	31	23	22	32	35	24	24	316	
		Total	163	161	193	150	226	191	226	193	158	180	187	190	197	2415	
	County Totals	CPS	309	306	326	313	424	337	379	354	295	296	344	350	361	4394	
		CWS	43	35	56	37	60	51	71	46	49	61	58	55	48	670	
		Total	352	341	382	350	484	388	450	400	344	357	402	405	409	5064	
PASSAIC	Passaic Central	CPS	140	148	165	156	180	186	223	198	121	105	168	178	155	2123	
		CWS	25	25	26	26	44	27	41	34	29	35	32	33	34	411	
		Total	165	173	191	182	224	213	264	232	150	140	200	211	189	2534	
	Passaic North	CPS	135	157	192	172	181	165	206	154	136	145	176	214	148	2181	
		CWS	26	18	37	31	30	27	40	39	27	35	46	37	37	430	
		Total	161	175	229	203	211	192	246	193	163	180	222	251	185	2611	
	County Totals	CPS	275	305	357	328	361	351	429	352	257	250	344	392	303	4304	
		CWS	51	43	63	57	74	54	81	73	56	70	78	70	71	841	
		Total	326	348	420	385	435	405	510	425	313	320	422	462	374	5145	
SALEM	Salem	CPS	56	67	68	60	61	55	67	50	53	50	55	72	54	768	
		CWS	8	6	15	5	14	13	14	8	15	8	8	12	11	137	
		Total	64	73	83	65	75	68	81	58	68	58	63	84	65	905	
	County Totals	CPS	56	67	68	60	61	55	67	50	53	50	55	72	54	768	
		CWS	8	6	15	5	14	13	14	8	15	8	8	12	11	137	
		Total	64	73	83	65	75	68	81	58	68	58	63	84	65	905	
SOMERSET	Somerset	CPS	124	123	150	146	151	127	145	133	104	97	124	160	112	1696	
		CWS	13	10	21	27	29	19	29	19	12	22	23	16	14	254	
		Total	137	133	171	173	180	146	174	152	116	119	147	176	126	1950	
	County Totals	CPS	124	123	150	146	151	127	145	133	104	97	124	160	112	1696	
		Total	137	133	171	173	180	146	174	152	116	119	147	176	126	1950	

Table 5: Monthly Count of CPS Reports and CWS Referrals Assigned to CP&P Local Offices

County	Local Office	Type of Referral	Nov 2022	Dec 2022	Jan 2023	Feb 2023	Mar 2023	Apr 2023	May 2023	Jun 2023	Jul 2023	Aug 2023	Sep 2023	Oct 2023	Nov 2023	Total
SUSSEX	Sussex	CPS	89	75	97	70	117	71	110	88	93	82	73	88	82	1135
		CWS	14	10	18	17	18	19	19	20	7	15	22	16	11	206
		Total	103	85	115	87	135	90	129	108	100	97	95	104	93	1341
	County Totals	CPS	89	75	97	70	117	71	110	88	93	82	73	88	82	1135
		Total	103	85	115	87	135	90	129	108	100	97	95	104	93	1341
UNION	Union Central	CPS	89	88	107	101	108	92	118	71	71	81	94	97	82	1199
		CWS	12	13	19	20	17	14	19	13	19	13	16	20	11	206
		Total	101	101	126	121	125	106	137	84	90	94	110	117	93	1405
	Union East	CPS	80	66	95	104	109	90	119	102	93	79	85	97	102	1221
		CWS	12	7	12	21	22	10	12	13	9	24	16	17	13	188
		Total	92	73	107	125	131	100	131	115	102	103	101	114	115	1409
	Union West	CPS	90	96	103	107	122	106	115	98	86	84	72	106	120	1305
		CWS	18	23	10	17	19	16	21	25	18	11	19	23	15	235
		Total	108	119	113	124	141	122	136	123	104	95	91	129	135	1540
	County Totals	CPS	259	250	305	312	339	288	352	271	250	244	251	300	304	3725
		CWS	42	43	41	58	58	40	52	51	46	48	51	60	39	629
Total		301	293	346	370	397	328	404	322	296	292	302	360	343	4354	
WARREN	Warren	CPS	72	69	93	92	84	96	92	82	80	76	86	72	76	1070
		CWS	8	12	15	8	22	15	21	7	15	16	8	16	28	191
		Total	80	81	108	100	106	111	113	89	95	92	94	88	104	1261
	County Totals	CPS	72	69	93	92	84	96	92	82	80	76	86	72	76	1070
		Total	80	81	108	100	106	111	113	89	95	92	94	88	104	1261
County CPS Referral Total		CPS	4,599	4,534	5,165	4,865	5,711	4,700	5,671	4,745	4,350	4,265	4,717	5,427	4,882	63,631
County CWS Referral Total		CWS	726	700	930	861	1,092	837	1,025	924	809	951	969	1,103	912	11,839
County Referral Total		Total	5,325	5,234	6,095	5,726	6,803	5,537	6,696	5,669	5,159	5,216	5,686	6,530	5,794	75,470
Central Region IAIU	CPS	56	47	53	55	77	64	89	56	49	49	47	82	60	784	
	CWS	0	0	0	0	0	0	0	0	0	0	0	0	0	0	
	Total	56	47	53	55	77	64	89	56	49	49	47	82	60	784	
Metro Region IAIU	CPS	33	25	45	44	57	32	67	43	32	32	58	86	68	622	
	CWS	0	0	0	0	0	0	0	0	0	0	0	0	0	0	
	Total	33	25	45	44	57	32	67	43	32	32	58	86	68	622	
Northern Region IAIU	CPS	50	56	58	39	69	63	81	33	28	28	59	71	50	685	
	CWS	0	0	0	0	0	0	0	0	1	0	0	0	0	1	
	Total	50	56	58	39	69	63	81	33	29	28	59	71	50	686	
Southern Region IAIU	CPS	50	53	81	77	72	66	84	62	59	59	79	86	71	899	
	CWS	0	0	0	0	0	0	0	0	0	0	0	0	0	0	
	Total	50	53	81	77	72	66	84	62	59	59	79	86	71	899	
IAIU CPS Subtotal		CPS	189	181	237	215	275	225	321	194	168	168	243	325	249	2,990
IAIU CWS Subtotal		CWS	0	0	0	0	0	0	0	1	0	0	0	0	1	
IAIU Subtotal		Total	189	181	237	215	275	225	321	194	169	168	243	325	249	2,991
County and IAIU CPS Subtotal		CPS	4,788	4,715	5,402	5,080	5,986	4,925	5,992	4,939	4,518	4,433	4,960	5,752	5,131	66,621
County and IAIU CWS Subtotal		CWS	726	700	930	861	1,092	837	1,025	924	810	951	969	1,103	912	11,840
Unable to Determine ⁽¹⁾		Total	99	75	91	89	105	102	107	89	81	81	105	109	86	1,219
Other Offices		Total	1	1	2	2	2	7	3	2	1	0	4	0	25	
Grand Total		Total	5,614	5,491	6,425	6,032	7,185	5,871	7,127	5,954	5,410	5,465	6,034	6,968	6,129	79,705

⁽¹⁾CPS Reports or CWS Referrals not assigned to an office through the Assignment Designee, but were assigned to an office for an assessment or investigation.