



Child Protection and Permanency

Monthly Screening and Investigation Report December 2018

Christine Norbut Beyer, MSW
Commissioner

January 9, 2019



NEW JERSEY DEPARTMENT OF
CHILDREN AND FAMILIES

Table of Contents

Table 1: NJ State Central Registry Activity: Monthly Child Abuse and Neglect Hotline Calls, Intakes and Assignments to Child Protection & Permanency (CP&P) Offices

Chart 1: CP&P Annual Trends in Child Protection Services (CPS) Reports and Child Welfare Services (CWS) Referrals

Table 2: Assignments to CP&P Offices: CPS Reports and CWS Referrals

Table 3: Source of CPS Reports and CWS Referrals

Table 4: Monthly Count of CPS Reports and CWS Referrals Assigned to Counties

Table 5: Monthly Count of CPS Reports and CWS Referrals Assigned to CP&P Local Offices

Table 1: NJ State Central Registry Activity: Monthly Child Abuse and Neglect Hotline Calls, Intakes and Assignments to CP&P Offices^{1,2,7}

2017 - 2018	Hotline Call Activity				Intakes Recorded in NJ SPIRIT ^{6,8}												Assignments to CP&P Offices				
	Total Calls to SCR ³	Abandon Calls ⁴	Average Time to Answer (seconds)	Resulting NJS Intakes ⁵	CPS Reports		CWS Referrals		No Action Required (NAR)		Related Information (RI)		Information & Referral (I&R)		Information Only (IO)		CPS Reports		CWS Referrals		Total
					n	%	n	%	n	%	n	%	n	%	n	%	n	%	n	%	
December 2017	13,005	560	38	14,194	4,601	32.4%	1,594	11.2%	220	1.5%	3,843	27.1%	1,724	12.1%	2,212	15.6%	4,601	74.3%	1,594	25.7%	6,195
January 2018	14,876	952	60	15,833	5,276	33.3%	1,784	11.3%	242	1.5%	4,346	27.4%	1,755	11.1%	2,430	15.3%	5,276	74.7%	1,784	25.3%	7,060
February 2018	13,558	727	54	14,638	4,933	33.7%	1,643	11.2%	251	1.7%	3,807	26.0%	1,740	11.9%	2,264	15.5%	4,933	75.0%	1,644	25.0%	6,577
March 2018	14,714	804	55	15,869	5,212	32.8%	1,727	10.9%	288	1.8%	4,187	26.4%	1,855	11.7%	2,600	16.4%	5,212	75.1%	1,727	24.9%	6,939
April 2018	14,148	727	54	15,227	5,275	34.6%	1,603	10.5%	252	1.7%	3,952	26.0%	1,818	11.9%	2,327	15.3%	5,275	76.7%	1,601	23.3%	6,876
May 2018	15,956	1,482	69	16,668	5,920	35.5%	1,833	11.0%	316	1.9%	4,104	24.6%	1,997	12.0%	2,498	15.0%	5,920	76.3%	1,836	23.7%	7,756
June 2018	13,796	1,021	72	14,490	4,948	34.1%	1,614	11.1%	264	1.8%	3,662	25.3%	1,693	11.7%	2,309	15.9%	4,948	75.4%	1,615	24.6%	6,563
July 2018	11,406	407	35	12,497	4,011	32.1%	1,307	10.5%	214	1.7%	3,387	27.1%	1,374	11.0%	2,204	17.6%	4,011	75.4%	1,308	24.6%	5,319
August 2018	11,633	460	43	12,708	4,102	32.3%	1,409	11.1%	252	2.0%	3,455	27.2%	1,307	10.3%	2,183	17.2%	4,102	74.4%	1,408	25.6%	5,510
September 2018	13,554	925	64	14,277	4,748	33.3%	1,632	11.4%	217	1.5%	3,914	27.4%	1,448	10.1%	2,318	16.2%	4,748	74.4%	1,634	25.6%	6,382
October 2018	15,489	904	68	16,470	5,790	35.2%	2,008	12.2%	260	1.6%	4,103	24.9%	1,827	11.1%	2,482	15.1%	5,790	74.2%	2,011	25.8%	7,801
November 2018	13,533	1,111	80	14,067	4,973	35.4%	1,621	11.5%	210	1.5%	3,749	26.7%	1,453	10.3%	2,061	14.7%	4,973	75.4%	1,620	24.6%	6,593
December 2018	13,020	971	78	13,683	4,891	35.7%	1,524	11.1%	174	1.3%	3,518	25.7%	1,446	10.6%	2,130	15.6%	4,891	76.2%	1,527	23.8%	6,418
	13,745	850	59	14,663	4,975	33.9%	1,638	11.2%	243	1.7%	3,848	26.2%	1,649	11.2%	2,309	15.7%	4,975	75.2%	1,639	24.8%	6,615
Overall Total	178,688	11,051		190,621	64,680		21,299		3,160		50,027		21,437		30,018		64,680	75.2%	21,309	24.8%	85,989

¹Comes from three distinct sources: (1) the Automatic Call Distribution (ACD) phone system; which keeps a count of the number of calls and call routing; (2) Monthly NJSpirit Intakes; which record decision making on calls received by hotline screeners, and (3) NJSpirit extracts of assigned CWS Referrals and CPS Reports.

²The number of Intakes, CPS Reports, and CWS Referrals are based on an extract from NJSpirit. Data extracted by the Office of Research, Evaluation, and Reporting on **January 9, 2019** includes all Intakes, CPS Reports, and CWS Referrals received from **December 1, 2018 through December 31, 2018**.

³The number calls received through the ACD System that were directed to a screener from any call-in phone number.

⁴The number of calls received through the ACD System that are abandoned either while waiting in queue or while ringing.

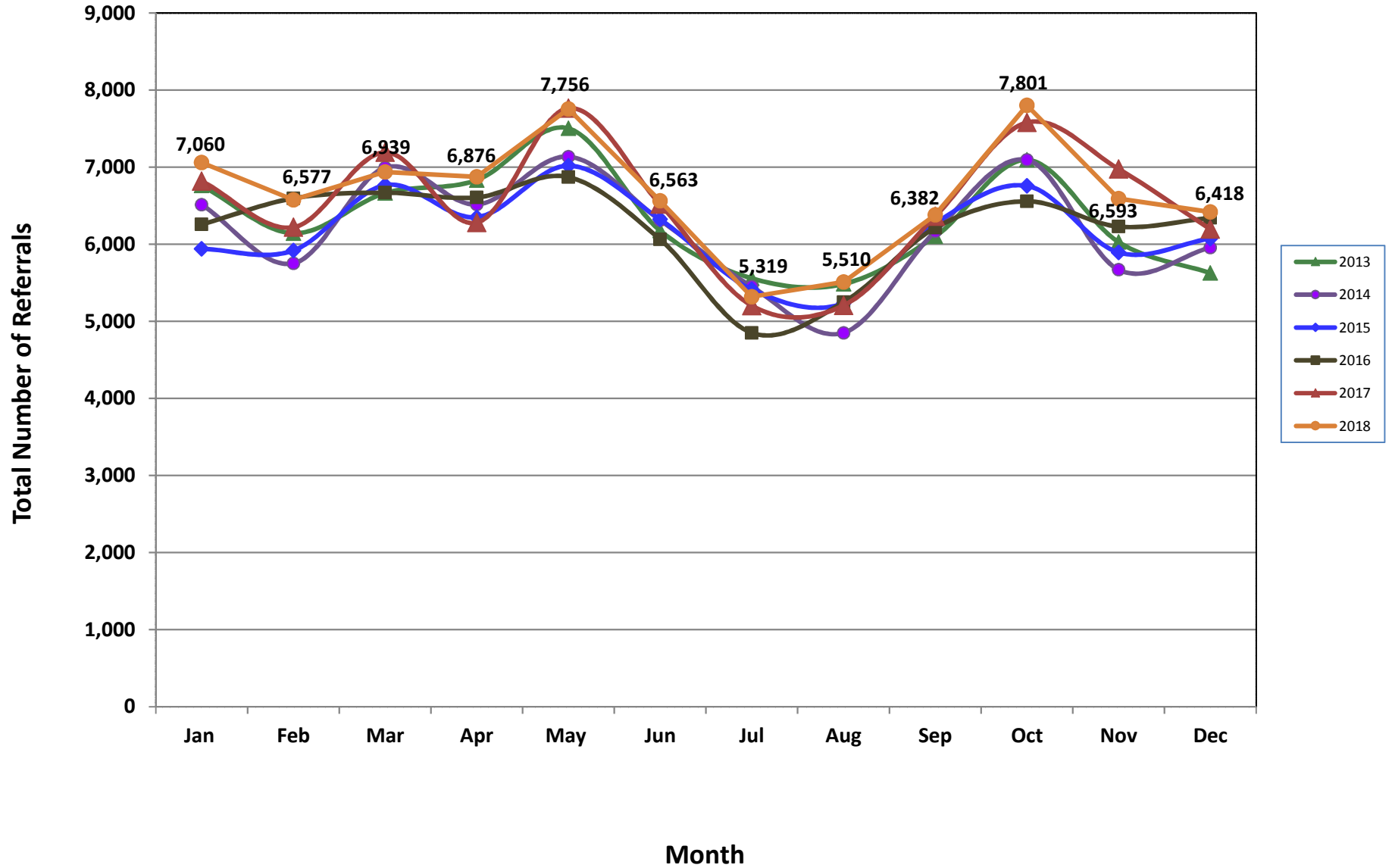
⁵The number of Intakes entered in NJSpirit from the number of calls received.

⁶The number of Intakes recorded in NJSpirit, by type of Intake. There is not a one-to-one relationship between an ACD call and an Intake; multiple calls to State Central Registry (SCR) may result in a single Intake, or one call may result in multiple Intakes.

⁷Intake: The process of documenting: a report of alleged abuse or neglect of a child (CPS); a request for services on behalf of a child, or a referral of a child for services (CWS); a call in which the caller provides additional or clarifying information about a current service case or active investigation (RI); informing a caller of, or referring a caller to, services available from other private or public sources (I&R); a call that requires no action by CP&P (NAR); or a response to a simple inquiry (IO).

⁸NJ SPIRIT: NJ Statewide Protection Investigation and Reporting Information Tool case management system

CP&P Annual Trends in CPS Reports and CWS Referrals



Data in this report is preliminary and may differ from any final report. This report is produced to ensure continuous quality improvement throughout DCF.

Table 2: Assignments to CP&P Offices: CPS Reports and CWS Referrals¹

Intake Date ³		CPS Reports ²	CWS Referrals ²	Total Assignments ²
2013	Jan 2013	5,464	1,296	6,760
	Feb 2013	4,966	1,177	6,143
	Mar 2013	5,355	1,309	6,664
	Apr 2013	5,430	1,402	6,832
	May 2013	5,993	1,510	7,503
	Jun 2013	4,947	1,230	6,177
	Jul 2013	4,330	1,228	5,558
	Aug 2013	4,330	1,155	5,485
	Sep 2013	4,851	1,251	6,102
	Oct 2013	5,614	1,481	7,095
	Nov 2013	4,694	1,334	6,028
	Dec 2013	4,397	1,229	5,626
	Total	60,371	15,602	75,973
2014	Jan 2014	5,097	1,416	6,513
	Feb 2014	4,457	1,295	5,752
	Mar 2014	5,408	1,586	6,994
	Apr 2014	5,049	1,467	6,516
	May 2014	5,501	1,635	7,136
	Jun 2014	4,796	1,517	6,313
	Jul 2014	4,202	1,247	5,449
	Aug 2014	3,629	1,222	4,851
	Sep 2014	4,668	1,498	6,166
	Oct 2014	5,509	1,586	7,095
	Nov 2014	4,254	1,416	5,670
	Dec 2014	4,509	1,447	5,956
	Total	57,079	17,332	74,411
2015	Jan 2015	4,549	1,391	5,940
	Feb 2015	4,574	1,345	5,919
	Mar 2015	5,187	1,580	6,767
	Apr 2015	4,967	1,384	6,351
	May 2015	5,457	1,561	7,018
	Jun 2015	4,887	1,436	6,323
	Jul 2015	4,140	1,273	5,413
	Aug 2015	3,978	1,256	5,234
	Sep 2015	4,776	1,495	6,271
	Oct 2015	5,139	1,619	6,758
	Nov 2015	4,417	1,477	5,894
	Dec 2015	4,530	1,544	6,074
	Total	56,601	17,361	73,962

Table 2: Assignments to CP&P Offices: CPS Reports and CWS Referrals¹

Intake Date ³		CPS Reports ²	CWS Referrals ²	Total Assignments ²
2016	Jan 2016	4,686	1,571	6,257
	Feb 2016	4,974	1,622	6,596
	Mar 2016	5,000	1,669	6,669
	Apr 2016	5,065	1,542	6,607
	May 2016	5,238	1,633	6,871
	Jun 2016	4,602	1,461	6,063
	Jul 2016	3,663	1,187	4,850
	Aug 2016	3,941	1,307	5,248
	Sep 2016	4,654	1,559	6,213
	Oct 2016	4,935	1,622	6,557
	Nov 2016	4,677	1,552	6,229
	Dec 2016	4,762	1,580	6,342
	Total	56,197	18,305	74,502
2017	Jan 2017	5,111	1,708	6,819
	Feb 2017	4,716	1,504	6,220
	Mar 2017	5,349	1,843	7,192
	Apr 2017	4,790	1,490	6,280
	May 2017	5,847	1,919	7,766
	Jun 2017	4,853	1,665	6,518
	Jul 2017	3,814	1,389	5,203
	Aug 2017	3,866	1,340	5,206
	Sep 2017	4,719	1,643	6,362
	Oct 2017	5,613	1,966	7,579
	Nov 2017	5,223	1,753	6,976
	Dec 2017	4,601	1,594	6,195
	Total	58,502	19,814	78,316
2018	Jan 2018	5,276	1,784	7,060
	Feb 2018	4,933	1,644	6,577
	Mar 2018	5,212	1,727	6,939
	Apr 2018	5,275	1,601	6,876
	May 2018	5,920	1,836	7,756
	Jun 2018	4,948	1,615	6,563
	Jul 2018	4,011	1,308	5,319
	Aug 2018	4,102	1,408	5,510
	Sep 2018	4,748	1,634	6,382
	Oct 2018	5,790	2,011	7,801
	Nov 2018	4,973	1,620	6,593
	Dec 2018	4,891	1,527	6,418
	Total	60,079	19,715	79,794
Grand Total		348,829	108,129	456,958

¹Source of Data: NJ SPIRIT

²A CPS Report or a CWS Referral may include multiple children in a family, with one or more allegation or request for services. In these cases, each CPS Report or CWS Referral is counted once - the CPS Report or the CWS Referral is the unit of analysis rather than the child.

³Prior to January 2014, the number of CPS Reports and CWS Referrals was based on the type of assignment of the CPS Report or CWS Referral. Beginning in January 2014, the number of CPS Reports and CWS Referrals is based on the number of CPS Reports and CWS Referrals received.

Table 3: Source of CPS Reports and CWS Referrals

	Source	Dec 2017	Jan 2018	Feb 2018	Mar 2018	Apr 2018	May 2018	Jun 2018	Jul 2018	Aug 2018	Sep 2018	Oct 2018	Nov 2018	Dec 2018		13 Month Total	
CPS Reports and CWS Referrals	School Staff	1622	1932	1970	1969	1783	2213	1243	184	118	1237	2256	1769	1643	26%	19,939	23%
	Healthcare Provider	848	1003	809	931	932	994	885	904	920	928	1018	954	891	14%	12,017	14%
	Law Enforcement	988	1018	1001	1149	1179	1264	1220	1238	1201	1251	1188	1186	1186	18%	15,069	18%
	Government Agency	408	392	410	466	417	446	441	436	468	428	521	430	387	6%	5,650	7%
	Parent	487	569	468	469	509	548	574	573	590	569	563	491	481	7%	6,891	8%
	Relative/Friend/Neighbor	396	531	394	440	475	496	517	475	488	475	452	370	393	6%	5,902	7%
	Anonymous	595	602	623	641	628	789	683	538	573	565	769	576	609	9%	8,191	10%
	CP&P	129	125	121	107	130	143	140	115	142	106	131	99	109	2%	1,597	2%
	Court/Legal	135	130	130	131	158	164	154	143	193	141	171	101	132	2%	1,883	2%
	Community Group/Individual	265	318	289	294	325	290	301	290	317	301	301	264	234	4%	3,789	4%
	Facility Staff (incl Correctional Facility)	46	85	70	72	68	97	64	101	135	103	97	86	79	1%	1,103	1%
	Child (Self)	25	49	33	41	38	34	49	38	53	35	51	30	35	1%	511	1%
	Other	237	294	242	207	217	261	272	267	289	228	262	218	226	4%	3,220	4%
	Daycare/Babysitter	14	12	17	22	17	17	20	17	23	15	21	19	13	0%	227	0%
	Total		6,195	7,060	6,577	6,939	6,876	7,756	6,563	5,319	5,510	6,382	7,801	6,593	6,418		85,989

Table 4: Monthly Count of CPS Reports and CWS Referrals Assigned to Counties

County														Average Number of Assignments Last 13 Months	Nov 18 to Dec 18 Numerical Difference
	Dec 2017	Jan 2018	Feb 2018	Mar 2018	Apr 2018	May 2018	Jun 2018	Jul 2018	Aug 2018	Sep 2018	Oct 2018	Nov 2018	Dec 2018		
Atlantic	221	291	208	267	260	326	284	213	231	295	280	264	243	260	-21
Bergen	416	394	371	458	374	474	354	291	243	333	467	412	377	382	-35
Burlington	294	315	307	290	312	302	304	284	246	270	348	313	318	300	5
Camden	535	634	526	559	562	643	564	472	485	543	606	515	469	547	-46
Cape May	77	82	73	68	95	100	97	80	85	109	87	73	68	84	-5
Cumberland	193	250	174	223	265	266	202	159	205	225	232	204	200	215	-4
Essex	665	787	695	778	770	811	713	545	622	666	859	712	694	717	-18
Gloucester	252	268	219	239	272	298	231	200	229	215	260	235	233	242	-2
Hudson	418	439	386	466	454	509	412	330	342	426	540	420	425	428	5
Hunterdon	60	60	54	58	67	62	56	48	49	57	75	58	59	59	1
Mercer	232	264	262	262	295	330	274	223	247	231	365	298	283	274	-15
Middlesex	419	540	463	498	473	534	474	358	366	433	563	426	472	463	46
Monmouth	327	413	384	427	376	446	341	302	277	410	426	380	352	374	-28
Morris	219	269	191	245	240	256	199	204	186	215	292	224	242	229	18
Ocean	356	411	364	420	397	427	398	357	371	386	482	450	408	402	-42
Passaic	421	451	456	469	448	571	423	307	383	421	567	461	438	447	-23
Salem	80	90	68	99	92	90	79	65	77	104	90	72	70	83	-2
Somerset	172	156	157	179	174	180	189	141	128	155	200	181	165	167	-16
Sussex	92	126	90	102	124	112	118	82	82	99	120	81	97	102	16
Union	324	361	366	352	321	379	343	260	221	328	396	351	343	334	-8
Warren	72	94	101	117	108	117	110	87	105	118	105	93	104	102	11
County Subtotals	5,845	6,695	5,915	6,576	6,479	7,233	6,165	5,008	5,180	6,039	7,360	6,223	6,060	6,214	-163
Central Region IAIU	55	62	58	63	62	89	64	40	57	39	67	63	47	59	-16
Metro Region IAIU	56	54	63	48	52	78	60	40	38	50	65	61	51	55	-10
Northern Region IAIU	54	60	53	53	69	88	60	42	34	63	71	70	64	60	-6
Southern Region IAIU	84	90	75	74	86	95	71	61	76	67	100	58	71	78	13
IAIU Subtotals	249	266	249	238	269	350	255	183	205	219	303	252	233	252	-19
Unable to Determine¹	98	94	407	122	125	169	137	128	122	123	135	117	121	146	4
Other Offices	3	5	6	3	3	4	6	0	3	1	3	1	4	3	3
Grand Total	6,195	7,060	6,577	6,939	6,876	7,756	6,563	5,319	5,510	6,382	7,801	6,593	6,418	6,615	-175

¹CPS Reports or CWS Referrals not assigned to an office through the Assignment Designee, but were assigned to an office for an assessment or investigation.

Table 5: Monthly Count of CPS Reports and CWS Referrals Assigned to CP&P Local Offices

County	Local Office	Type of Referral	Month												Total	
			Dec 2017	Jan 2018	Feb 2018	Mar 2018	Apr 2018	May 2018	Jun 2018	Jul 2018	Aug 2018	Sep 2018	Oct 2018	Nov 2018		Dec 2018
ATLANTIC	Atlantic East	CPS	94	127	95	131	118	157	132	97	106	132	132	139	107	1,567
		CWS	33	36	29	28	32	40	49	31	46	43	50	40	43	500
		Total	127	163	124	159	150	197	181	128	152	175	182	179	150	2,067
	Atlantic West	CPS	75	94	68	75	88	98	74	68	60	89	80	73	72	1,014
		CWS	19	34	16	33	22	31	29	17	19	31	18	12	21	302
		Total	94	128	84	108	110	129	103	85	79	120	98	85	93	1,316
	County Totals	CPS	169	221	163	206	206	255	206	165	166	221	212	212	179	2,581
		CWS	52	70	45	61	54	71	78	48	65	74	68	52	64	802
		Total	221	291	208	267	260	326	284	213	231	295	280	264	243	3,383
BERGEN	Bergen Central	CPS	128	138	112	144	122	141	112	76	59	88	147	103	119	1,489
		CWS	48	40	44	54	37	58	52	32	25	44	60	51	39	584
		Total	176	178	156	198	159	199	164	108	84	132	207	154	158	2,073
	Bergen South	CPS	177	154	163	198	144	199	119	136	112	152	187	188	155	2,084
		CWS	63	62	52	62	71	76	71	47	47	49	73	70	64	807
		Total	240	216	215	260	215	275	190	183	159	201	260	258	219	2,891
	County Totals	CPS	305	292	275	342	266	340	231	212	171	240	334	291	274	3,573
		CWS	111	102	96	116	108	134	123	79	72	93	133	121	103	1,391
		Total	416	394	371	458	374	474	354	291	243	333	467	412	377	4,964
BURLINGTON	Burlington East	CPS	101	129	110	118	116	104	115	117	93	93	131	124	128	1,479
		CWS	38	39	46	35	36	46	45	37	33	31	53	38	38	515
		Total	139	168	156	153	152	150	160	154	126	124	184	162	166	1,994
	Burlington West	CPS	99	108	117	105	108	120	114	100	83	113	124	121	123	1,435
		CWS	56	39	34	32	52	32	30	30	37	33	40	30	29	474
		Total	155	147	151	137	160	152	144	130	120	146	164	151	152	1,909
	County Totals	CPS	200	237	227	223	224	224	229	217	176	206	255	245	251	2,914
		CWS	94	78	80	67	88	78	75	67	70	64	93	68	67	989
		Total	294	315	307	290	312	302	304	284	246	270	348	313	318	3,903
CAMDEN	Camden Central	CPS	122	157	108	126	111	141	109	113	109	103	116	110	104	1,529
		CWS	51	31	30	39	32	47	33	27	27	36	41	27	27	448
		Total	173	188	138	165	143	188	142	140	136	139	157	137	131	1,977
	Camden East	CPS	100	116	99	129	139	127	113	99	99	106	110	103	81	1,421
		CWS	27	39	37	32	30	30	41	32	36	44	39	29	26	442
		Total	127	155	136	161	169	157	154	131	135	150	149	132	107	1,863
	Camden North	CPS	82	118	114	105	106	120	115	80	74	91	119	94	96	1,314
		CWS	35	50	24	34	25	41	44	26	33	34	42	31	19	438
		Total	117	168	138	139	131	161	159	106	107	125	161	125	115	1,752
	Camden South	CPS	85	89	79	75	100	113	86	72	85	98	108	89	91	1,170
		CWS	33	34	35	19	19	24	23	23	22	31	31	32	25	351
		Total	118	123	114	94	119	137	109	95	107	129	139	121	116	1,521
	County Totals	CPS	389	480	400	435	456	501	423	364	367	398	453	396	372	5,434
		CWS	146	154	126	124	106	142	141	108	118	145	153	119	97	1,679
		Total	535	634	526	559	562	643	564	472	485	543	606	515	469	7,113
CAPE MAY	Cape May	CPS	58	64	47	46	69	81	76	60	73	89	64	56	60	843
		CWS	19	18	26	22	26	19	21	20	12	20	23	17	8	251
		Total	77	82	73	68	95	100	97	80	85	109	87	73	68	1,094
	County Totals	CPS	58	64	47	46	69	81	76	60	73	89	64	56	60	843
		CWS	19	18	26	22	26	19	21	20	12	20	23	17	8	251
		Total	77	82	73	68	95	100	97	80	85	109	87	73	68	1,094
CUMBERLAND	Cumberland East	CPS	44	62	36	55	60	56	58	47	44	60	55	47	45	669
		CWS	22	16	17	18	18	17	15	15	13	15	18	15	13	212
		Total	66	78	53	73	78	73	73	62	57	75	73	62	58	881
	Cumberland West	CPS	101	146	92	126	146	146	111	82	118	118	116	106	116	1,524
		CWS	26	26	29	24	41	47	18	15	30	32	43	36	26	393
		Total	127	172	121	150	187	193	129	97	148	150	159	142	142	1,917
	County Totals	CPS	145	208	128	181	206	202	169	129	162	178	171	153	161	2,193
		CWS	48	42	46	42	59	64	33	30	43	47	61	51	39	605
		Total	193	250	174	223	265	266	202	159	205	225	232	204	200	2,798



Table 5: Monthly Count of CPS Reports and CWS Referrals Assigned to CP&P Local Offices

County	Local Office	Type of Referral	Month													Total
			Dec 2017	Jan 2018	Feb 2018	Mar 2018	Apr 2018	May 2018	Jun 2018	Jul 2018	Aug 2018	Sep 2018	Oct 2018	Nov 2018	Dec 2018	
ESSEX	Essex Central	CPS	79	93	77	107	103	113	95	70	92	68	97	103	90	1,187
		CWS	28	42	22	35	36	39	23	21	23	41	35	35	26	406
		Total	107	135	99	142	139	152	118	91	115	109	132	138	116	1,593
	Essex North	CPS	64	80	71	75	70	83	62	41	61	65	82	74	65	893
		CWS	25	25	21	34	24	24	35	18	15	28	31	25	20	325
		Total	89	105	92	109	94	107	97	59	76	93	113	99	85	1,218
	Essex South	CPS	72	83	64	63	83	65	92	46	76	63	80	70	77	934
		CWS	28	18	30	21	20	24	25	27	17	28	44	24	20	326
		Total	100	101	94	84	103	89	117	73	93	91	124	94	97	1260
	Newark Center City	CPS	104	107	86	105	88	105	91	75	81	102	123	91	98	1256
		CWS	18	34	35	34	38	42	33	26	26	27	44	36	25	418
		Total	122	141	121	139	126	147	124	101	107	129	167	127	123	1674
	Newark Northeast	CPS	76	107	97	97	99	104	81	71	84	76	117	105	101	1215
		CWS	30	44	39	44	38	40	42	24	35	29	58	30	24	477
		Total	106	151	136	141	137	144	123	95	119	105	175	135	125	1692
Newark South	CPS	103	116	111	116	128	138	106	95	76	93	111	92	102	1387	
	CWS	38	38	42	47	43	34	28	31	36	46	37	27	46	493	
	Total	141	154	153	163	171	172	134	126	112	139	148	119	148	1880	
County Totals	CPS	498	586	506	563	571	608	527	398	470	467	610	535	533	6872	
	CWS	167	201	189	215	199	203	186	147	152	199	249	177	161	2445	
	Total	665	787	695	778	770	811	713	545	622	666	859	712	694	9317	
GLOUCESTER	Gloucester East	CPS	96	94	85	79	113	118	79	75	76	86	104	85	70	1160
		CWS	30	35	22	24	41	26	18	20	31	22	41	25	30	365
		Total	126	129	107	103	154	144	97	95	107	108	145	110	100	1525
	Gloucester West	CPS	100	105	93	100	96	118	100	82	101	79	92	95	105	1266
		CWS	26	34	19	36	22	36	34	23	21	28	23	30	28	360
		Total	126	139	112	136	118	154	134	105	122	107	115	125	133	1626
	County Totals	CPS	196	199	178	179	209	236	179	157	177	165	196	180	175	2426
		CWS	56	69	41	60	63	62	52	43	52	50	64	55	58	725
		Total	252	268	219	239	272	298	231	200	229	215	260	235	233	3151
HUDSON	Hudson Central	CPS	83	103	88	98	115	131	93	83	89	93	141	91	117	1325
		CWS	38	46	37	36	36	56	57	38	39	43	43	37	41	547
		Total	121	149	125	134	151	187	150	121	128	136	184	128	158	1872
	Hudson North	CPS	87	75	77	92	98	79	62	34	51	71	92	62	72	952
		CWS	21	29	12	32	26	38	22	19	14	26	33	28	27	327
		Total	108	104	89	124	124	117	84	53	65	97	125	90	99	1279
	Hudson South	CPS	46	57	47	65	53	47	55	38	43	41	60	48	48	648
		CWS	19	26	19	24	15	18	19	16	17	34	23	35	22	287
		Total	65	83	66	89	68	65	74	54	60	75	83	83	70	935
	Hudson West	CPS	89	74	80	80	80	102	72	72	59	84	94	87	72	1045
		CWS	35	29	26	39	31	38	32	30	30	34	54	32	26	436
		Total	124	103	106	119	111	140	104	102	89	118	148	119	98	1481
County Totals	CPS	305	309	292	335	346	359	282	227	242	289	387	288	309	3970	
	CWS	113	130	94	131	108	150	130	103	100	137	153	132	116	1597	
	Total	418	439	386	466	454	509	412	330	342	426	540	420	425	5567	
HUNTERDON	Hunterdon	CPS	44	43	36	42	47	44	43	37	40	40	56	44	47	563
		CWS	16	17	18	16	20	18	13	11	9	17	19	14	12	200
		Total	60	60	54	58	67	62	56	48	49	57	75	58	59	763
	County Totals	CPS	44	43	36	42	47	44	43	37	40	40	56	44	47	563
		CWS	16	17	18	16	20	18	13	11	9	17	19	14	12	200
Total		60	60	54	58	67	62	56	48	49	57	75	58	59	763	
MERCER	Mercer North	CPS	79	94	103	95	124	125	107	81	107	84	139	113	110	1361
		CWS	35	46	43	42	34	39	32	31	28	25	57	50	31	493
		Total	114	140	146	137	158	164	139	112	135	109	196	163	141	1854
	Mercer South	CPS	86	89	98	90	104	134	105	86	78	89	125	95	109	1288
		CWS	32	35	18	35	33	32	30	25	34	33	44	40	33	424
		Total	118	124	116	125	137	166	135	111	112	122	169	135	142	1712
	County Totals	CPS	165	183	201	185	228	259	212	167	185	173	264	208	219	2649
		CWS	67	81	61	77	67	71	62	56	62	58	101	90	64	917
Total		232	264	262	262	295	330	274	223	247	231	365	298	283	3566	

Data in this report is preliminary and may differ from any final report. This report is produced to ensure continuous quality improvement throughout DCF.



Table 5: Monthly Count of CPS Reports and CWS Referrals Assigned to CP&P Local Offices

County	Local Office	Type of Referral	Dec 2017	Jan 2018	Feb 2018	Mar 2018	Apr 2018	May 2018	Jun 2018	Jul 2018	Aug 2018	Sep 2018	Oct 2018	Nov 2018	Dec 2018	Total
MIDDLESEX	Middlesex Central	CPS	87	139	96	118	104	118	101	78	62	75	116	93	102	1289
		CWS	35	40	35	29	36	29	36	32	28	30	31	28	33	422
		Total	122	179	131	147	140	147	137	110	90	105	147	121	135	1711
	Middlesex Coastal	CPS	121	127	124	125	128	144	123	111	100	120	161	110	120	1614
		CWS	33	51	28	45	36	52	42	24	37	39	49	39	42	517
		Total	154	178	152	170	164	196	165	135	137	159	210	149	162	2131
	Middlesex West	CPS	106	132	134	148	128	146	128	83	88	129	168	108	138	1636
		CWS	37	51	46	33	41	45	44	30	51	40	38	48	37	541
		Total	143	183	180	181	169	191	172	113	139	169	206	156	175	2177
	County Totals	CPS	314	398	354	391	360	408	352	272	250	324	445	311	360	4539
CWS		105	142	109	107	113	126	122	86	116	109	118	115	112	1480	
Total		419	540	463	498	473	534	474	358	366	433	563	426	472	6019	
MONMOUTH	Monmouth North	CPS	125	160	167	162	149	174	152	118	107	159	165	133	158	1929
		CWS	44	61	60	58	56	61	34	36	36	61	62	42	49	660
		Total	169	221	227	220	205	235	186	154	143	220	227	175	207	2589
	Monmouth South	CPS	114	150	123	159	137	160	113	112	91	149	149	151	100	1708
		CWS	44	42	34	48	34	51	42	36	43	41	50	54	45	564
		Total	158	192	157	207	171	211	155	148	134	190	199	205	145	2272
	County Totals	CPS	239	310	290	321	286	334	265	230	198	308	314	284	258	3637
		CWS	88	103	94	106	90	112	76	72	79	102	112	96	94	1224
		Total	327	413	384	427	376	446	341	302	277	410	426	380	352	4861
MORRIS	Morris East	CPS	66	96	64	73	71	94	66	79	74	75	100	84	91	1033
		CWS	31	40	32	34	32	29	25	24	20	24	42	19	37	389
		Total	97	136	96	107	103	123	91	103	94	99	142	103	128	1422
	Morris West	CPS	88	86	63	97	103	107	77	75	74	84	118	92	89	1153
		CWS	34	47	32	41	34	26	31	26	18	32	32	29	25	407
		Total	122	133	95	138	137	133	108	101	92	116	150	121	114	1560
	County Totals	CPS	154	182	127	170	174	201	143	154	148	159	218	176	180	2186
		CWS	65	87	64	75	66	55	56	50	38	56	74	48	62	796
		Total	219	269	191	245	240	256	199	204	186	215	292	224	242	2982
OCEAN	Ocean North	CPS	168	163	133	161	167	166	144	163	143	154	203	178	163	2106
		CWS	36	56	43	44	40	69	51	34	38	40	68	60	46	625
		Total	204	219	176	205	207	235	195	197	181	194	271	238	209	2731
	Ocean South	CPS	121	159	146	174	146	149	167	124	135	160	166	170	160	1977
		CWS	31	33	42	41	44	43	36	36	55	32	45	42	39	519
		Total	152	192	188	215	190	192	203	160	190	192	211	212	199	2496
	County Totals	CPS	289	322	279	335	313	315	311	287	278	314	369	348	323	4083
		CWS	67	89	85	85	84	112	87	70	93	72	113	102	85	1144
		Total	356	411	364	420	397	427	398	357	371	386	482	450	408	5227
PASSAIC	Passaic Central	CPS	155	173	171	171	178	243	163	108	128	164	207	177	157	2195
		CWS	78	65	75	74	62	87	54	43	51	55	93	66	68	871
		Total	233	238	246	245	240	330	217	151	179	219	300	243	225	3066
	Passaic North	CPS	131	134	135	166	152	185	143	104	147	128	189	158	146	1918
		CWS	57	79	75	58	56	56	63	52	57	74	78	60	67	832
		Total	188	213	210	224	208	241	206	156	204	202	267	218	213	2750
	County Totals	CPS	286	307	306	337	330	428	306	212	275	292	396	335	303	4113
		CWS	135	144	150	132	118	143	117	95	108	129	171	126	135	1703
		Total	421	451	456	469	448	571	423	307	383	421	567	461	438	5816
SALEM	Salem	CPS	58	68	56	79	77	73	62	52	56	73	68	53	53	828
		CWS	22	22	12	20	15	17	17	13	21	31	22	19	17	248
		Total	80	90	68	99	92	90	79	65	77	104	90	72	70	1076
	County Totals	CPS	58	68	56	79	77	73	62	52	56	73	68	53	53	828
		CWS	22	22	12	20	15	17	17	13	21	31	22	19	17	248
		Total	80	90	68	99	92	90	79	65	77	104	90	72	70	1076
SOMERSET	Somerset	CPS	119	119	127	115	140	136	155	106	93	125	153	137	128	1653
		CWS	53	37	30	64	34	44	34	35	35	30	47	44	37	524
		Total	172	156	157	179	174	180	189	141	128	155	200	181	165	2177
	County Totals	CPS	119	119	127	115	140	136	155	106	93	125	153	137	128	1653
		Total	172	156	157	179	174	180	189	141	128	155	200	181	165	2177

Data in this report is preliminary and may differ from any final report. This report is produced to ensure continuous quality improvement throughout DCF.

Table 5: Monthly Count of CPS Reports and CWS Referrals Assigned to CP&P Local Offices

County	Local Office	Type of Referral	2018												Total	
			Dec 2017	Jan 2018	Feb 2018	Mar 2018	Apr 2018	May 2018	Jun 2018	Jul 2018	Aug 2018	Sep 2018	Oct 2018	Nov 2018		Dec 2018
SUSSEX	Sussex	CPS	70	85	64	70	90	87	94	62	60	72	90	64	67	975
		CWS	22	41	26	32	34	25	24	20	22	27	30	17	30	350
		Total	92	126	90	102	124	112	118	82	82	99	120	81	97	1325
	County Totals	CPS	70	85	64	70	90	87	94	62	60	72	90	64	67	975
		Total	92	126	90	102	124	112	118	82	82	99	120	81	97	1325
UNION	Union Central	CPS	91	88	89	87	88	98	78	67	54	76	98	85	81	1080
		CWS	19	30	36	29	25	28	25	23	21	25	33	26	34	354
		Total	110	118	125	116	113	126	103	90	75	101	131	111	115	1434
	Union East	CPS	75	102	91	98	74	89	92	63	48	89	103	93	94	1111
		CWS	29	26	32	33	26	27	32	24	21	34	36	29	26	375
		Total	104	128	123	131	100	116	124	87	69	123	139	122	120	1486
	Union West	CPS	83	77	84	83	81	98	91	58	54	77	84	88	83	1041
		CWS	27	38	34	22	27	39	25	25	23	27	42	30	25	384
		Total	110	115	118	105	108	137	116	83	77	104	126	118	108	1425
	County Totals	CPS	249	267	264	268	243	285	261	188	156	242	285	266	258	3232
		CWS	75	94	102	84	78	94	82	72	65	86	111	85	85	1113
Total		324	361	366	352	321	379	343	260	221	328	396	351	343	4345	
WARREN	Warren	CPS	50	75	72	85	88	93	85	59	82	86	78	71	77	1001
		CWS	22	19	29	32	20	24	25	28	23	32	27	22	27	330
		Total	72	94	101	117	108	117	110	87	105	118	105	93	104	1331
	County Totals	CPS	50	75	72	85	88	93	85	59	82	86	78	71	77	1001
		Total	72	94	101	117	108	117	110	87	105	118	105	93	104	1331
County CPS Referral Total		CPS	4,302	4,955	4,392	4,908	4,929	5,469	4,611	3,755	3,825	4,461	5,418	4,653	4,587	60,265
County CWS Referral Total		CWS	1,543	1,740	1,523	1,668	1,550	1,764	1,554	1,253	1,355	1,578	1,942	1,570	1,473	20,513
County Referral Total		Total	5,845	6,695	5,915	6,576	6,479	7,233	6,165	5,008	5,180	6,039	7,360	6,223	6,060	80,778
Central Region IAIU	CPS	55	62	58	63	62	89	64	40	57	39	67	63	47	766	
	CWS	0	0	0	0	0	0	0	0	0	0	0	0	0	0	
	Total	55	62	58	63	62	89	64	40	57	39	67	63	47	766	
Metro Region IAIU	CPS	56	54	63	48	52	78	60	40	38	50	65	61	51	716	
	CWS	0	0	0	0	0	0	0	0	0	0	0	0	0	0	
	Total	56	54	63	48	52	78	60	40	38	50	65	61	51	716	
Northern Region IAIU	CPS	54	60	53	53	69	88	60	42	34	63	71	70	64	781	
	CWS	0	0	0	0	0	0	0	0	0	0	0	0	0	0	
	Total	54	60	53	53	69	88	60	42	34	63	71	70	64	781	
Southern Region IAIU	CPS	84	90	75	74	86	95	71	61	76	67	100	58	71	1,008	
	CWS	0	0	0	0	0	0	0	0	0	0	0	0	0	0	
	Total	84	90	75	74	86	95	71	61	76	67	100	58	71	1,008	
IAIU CPS Subtotal		CPS	249	266	249	238	269	350	255	183	205	219	303	252	233	3,271
IAIU CWS Subtotal		CWS	0	0	0	0	0	0	0	0	0	0	0	0	0	0
IAIU Subtotal		Total	249	266	249	238	269	350	255	183	205	219	303	252	233	3,271
County and IAIU CPS Subtotal		CPS	4,551	5,221	4,641	5,146	5,198	5,819	4,866	3,938	4,030	4,680	5,721	4,905	4,820	63,536
County and IAIU CWS Subtotal		CWS	1,543	1,740	1,523	1,668	1,550	1,764	1,554	1,253	1,355	1,578	1,942	1,570	1,473	20,513
Unable to Determine ⁽¹⁾		Total	98	94	407	122	125	169	137	128	122	123	135	117	121	1,898
Other Offices		Total	3	5	6	3	3	4	6	0	3	1	3	1	4	42
Grand Total		Total	6,195	7,060	6,577	6,939	6,876	7,756	6,563	5,319	5,510	6,382	7,801	6,593	6,418	85,989

⁽¹⁾CPS Reports or CWS Referrals not assigned to an office through the Assignment Designee, but were assigned to an office for an assessment or investigation.