



Child Protection and Permanency

Monthly Screening and Investigation Report February 2022

Christine Norbut Beyer, MSW
Commissioner



Table of Contents

Table 1: NJ State Central Registry Activity: Monthly Child Abuse and Neglect Hotline Calls, Intakes and Assignments to Child Protection & Permanency (CP&P) Offices

Chart 1: CP&P Annual Trends in Child Protection Services (CPS) Reports and Child Welfare Services (CWS) Referrals

Table 2: Assignments to CP&P Offices: CPS Reports and CWS Referrals

Table 3: Source of CPS Reports and CWS Referrals

Table 4: Monthly Count of CPS Reports and CWS Referrals Assigned to Counties

Table 5: Monthly Count of CPS Reports and CWS Referrals Assigned to CP&P Local Offices

Table 1: NJ State Central Registry Activity: Monthly Child Abuse and Neglect Hotline Calls, Intakes and Assignments to CP&P Offices^{1,2,7}

2021-2022	Hotline Call Activity				Intakes Recorded in NJ SPIRIT ^{6,8}														Assignments to CP&P Offices				
	Total Calls to SCR ³	Abandon Calls ⁴	Average Time to Answer (seconds)	Resulting NJS Intakes ⁵	CPS Reports		CWS Referrals		No Action Required (NAR)		Related Information (RI)		Information & Referral (I&R)		Information Only (IO)		Unusual Incident (UIRS)		CPS Reports		CWS Referrals		Total
					n	%	n	%	n	%	n	%	n	%	n	%	n	%	n	%	n	%	
February 2021	11,060	966	186	11,302	3,767	33.3%	655	5.8%	167	1.5%	2,499	22.1%	2,394	21.2%	1,820	16.1%	0	0.0%	3,767	85.2%	655	14.8%	4,422
March 2021	12,731	666	75	13,372	4,657	34.8%	829	6.2%	261	2.0%	2,868	21.4%	2,796	20.9%	1,961	14.7%	0	0.0%	4,657	84.9%	830	15.1%	5,487
April 2021	11,772	680	94	12,287	4,398	35.8%	750	6.1%	187	1.5%	2,796	22.8%	2,287	18.6%	1,869	15.2%	0	0.0%	4,398	85.4%	750	14.6%	5,148
May 2021	12,496	686	87	13,132	4,870	37.1%	734	5.6%	219	1.7%	3,025	23.0%	2,523	19.2%	1,761	13.4%	0	0.0%	4,870	86.9%	736	13.1%	5,606
June 2021	11,893	895	117	12,269	4,412	36.0%	591	4.8%	188	1.5%	2,943	24.0%	2,430	19.8%	1,705	13.9%	0	0.0%	4,412	88.2%	592	11.8%	5,004
July 2021	10,578	638	127	10,996	3,914	35.6%	569	5.2%	142	1.3%	2,642	24.0%	2,079	18.9%	1,650	15.0%	0	0.0%	3,914	87.3%	570	12.7%	4,484
August 2021	10,365	508	78	10,897	3,866	35.5%	482	4.4%	172	1.6%	2,371	21.8%	2,301	21.1%	1,704	15.6%	1	0.0%	3,866	88.9%	482	11.1%	4,348
September 2021	12,259	591	91	12,780	4,559	35.7%	564	4.4%	148	1.2%	2,794	21.9%	2,894	22.6%	1,819	14.2%	2	0.0%	4,559	89.0%	564	11.0%	5,123
October 2021	14,262	1,183	152	14,500	5,213	36.0%	631	4.4%	200	1.4%	3,287	22.7%	3,277	22.6%	1,890	13.0%	2	0.0%	5,213	89.2%	630	10.8%	5,843
November 2021	13,077	1,619	262	12,689	4,689	37.0%	539	4.2%	165	1.3%	2,817	22.2%	2,865	22.6%	1,609	12.7%	5	0.0%	4,689	89.7%	541	10.3%	5,230
December 2021	12,921	1,426	222	12,594	4,601	36.5%	558	4.4%	157	1.2%	2,746	21.8%	2,858	22.7%	1,660	13.2%	14	0.1%	4,601	89.2%	557	10.8%	5,158
January 2022	11,733	942	163	11,798	4,274	36.2%	524	4.4%	116	1.0%	2,561	21.7%	2,641	22.4%	1,672	14.2%	10	0.1%	4,274	89.1%	523	10.9%	4,797
February 2022	13,523	1,838	304	12,923	4,867	37.7%	632	4.9%	168	1.3%	2,732	21.1%	2,990	23.1%	1,524	11.8%	10	0.1%	4,867	88.5%	635	11.5%	5,502
	12,205	972	151	12,426	4,468	36.0%	620	5.0%	176	1.4%	2,775	22.3%	2,641	21.3%	1,742	14.0%	3	0.0%	4,468	87.8%	620	12.2%	5,089
Overall Total	158,670	12,638		161,539	58,087		8,058		2,290		36,081		34,335		22,644		44		58,087	87.8%	8,065	12.2%	66,152

¹Comes from three distinct sources: (1) the Automatic Call Distribution (ACD) phone system; which keeps a count of the number of calls and call routing; (2) Monthly NJSpirit Intakes; which record decision making on calls received by hotline screeners, and (3) NJSpirit extracts of assigned CWS Referrals and CPS Reports.

²The number of Intakes, CPS Reports, and CWS Referrals are based on an extract from NJSpirit.

Data extracted by the Office of Research, Evaluation, and Reporting on **March 08, 2022** includes all Intakes, CPS Reports, and CWS Referrals received from **February 01, 2022** through **February 28, 2022**.

³The number calls received through the ACD System that were directed to a screener from any call-in phone number.

⁴The number of calls received through the ACD System that are abandoned either while waiting in queue or while ringing.

⁵The number of Intakes entered in NJSpirit from the number of calls received.

⁶The number of Intakes recorded in NJSpirit, by type of Intake. There is not a one-to-one relationship between an ACD call and an Intake; multiple calls to State Central Registry (SCR) may result in a single Intake, or one call may result in multiple Intakes.

⁷Intake: The process of documenting: a report of alleged abuse or neglect of a child (CPS); a request for services on behalf of a child, or a referral of a child for services (CWS); a call in which the caller provides additional or clarifying information about a current service case or active investigation (RI); informing a caller of, or referring a caller to, services available from other private or public sources (I&R); a call that requires no action by CP&P (NAR); or a response to a simple inquiry (IO).

CP&P Annual Trends in CPS Reports and CWS Referrals

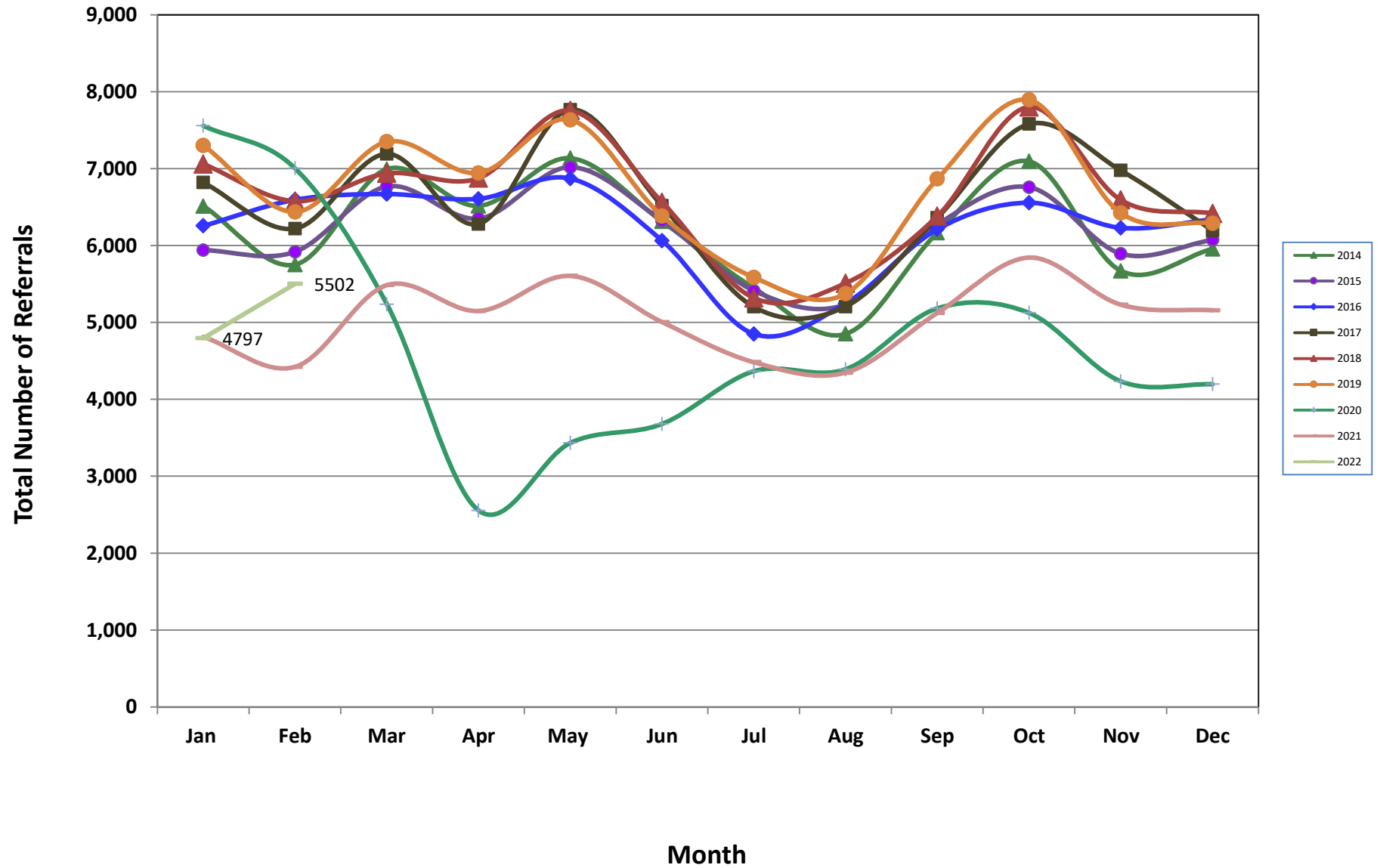


Table 2: Assignments to CP&P Offices: CPS Reports and CWS Referrals¹

Intake Date ³		CPS Reports ²	CWS Referrals ²	Total Assignments ²
2016	Jan 2016	4,686	1,571	6,257
	Feb 2016	4,974	1,622	6,596
	Mar 2016	5,000	1,669	6,669
	Apr 2016	5,065	1,542	6,607
	May 2016	5,238	1,633	6,871
	Jun 2016	4,602	1,461	6,063
	Jul 2016	3,663	1,187	4,850
	Aug 2016	3,941	1,307	5,248
	Sep 2016	4,654	1,559	6,213
	Oct 2016	4,935	1,622	6,557
	Nov 2016	4,677	1,552	6,229
	Dec 2016	4,762	1,580	6,342
	Total	56,197	18,305	74,502
2017	Jan 2017	5,111	1,708	6,819
	Feb 2017	4,716	1,504	6,220
	Mar 2017	5,349	1,843	7,192
	Apr 2017	4,790	1,490	6,280
	May 2017	5,847	1,919	7,766
	Jun 2017	4,853	1,665	6,518
	Jul 2017	3,814	1,389	5,203
	Aug 2017	3,866	1,340	5,206
	Sep 2017	4,719	1,643	6,362
	Oct 2017	5,613	1,966	7,579
	Nov 2017	5,223	1,753	6,976
	Dec 2017	4,601	1,594	6,195
	Total	58,502	19,814	78,316
2018	Jan 2018	5,276	1,784	7,060
	Feb 2018	4,933	1,644	6,577
	Mar 2018	5,212	1,727	6,939
	Apr 2018	5,275	1,601	6,876
	May 2018	5,920	1,836	7,756
	Jun 2018	4,948	1,615	6,563
	Jul 2018	4,011	1,308	5,319
	Aug 2018	4,102	1,408	5,510
	Sep 2018	4,748	1,634	6,382
	Oct 2018	5,790	2,011	7,801
	Nov 2018	4,973	1,620	6,593
	Dec 2018	4,891	1,527	6,418
	Total	60,079	19,715	79,794

Table 2: Assignments to CP&P Offices: CPS Reports and CWS Referrals¹

Intake Date ³		CPS Reports ²	CWS Referrals ²	Total Assignments ²
2019	Jan 2019	5,443	1,858	7,301
	Feb 2019	4,811	1,628	6,439
	Mar 2019	5,677	1,824	7,501
	Apr 2019	5,313	1,630	6,943
	May 2019	5,853	1,781	7,634
	Jun 2019	4,874	1,509	6,383
	Jul 2019	4,277	1,309	5,586
	Aug 2019	4,068	1,306	5,374
	Sep 2019	5,315	1,551	6,866
	Oct 2019	5,968	1,926	7,894
	Nov 2019	4,991	1,432	6,423
	Dec 2019	4,855	1,434	6,289
	Total	61,445	19,188	80,633
2020	Jan 2020	5,715	1,842	7,557
	Feb 2020	5,380	1,624	7,004
	Mar 2020	4,172	1,065	5,237
	Apr 2020	2,149	407	2,556
	May 2020	2,897	537	3,434
	Jun 2020	3,045	636	3,681
	Jul 2020	3,628	738	4,366
	Aug 2020	3,569	822	4,391
	Sep 2020	4,153	1,030	5,183
	Oct 2020	4,257	868	5,125
	Nov 2020	3,564	670	4,234
	Dec 2020	3,517	681	4,198
	Total	46,046	10,920	56,966
2021	Jan 2021	4,018	794	4,812
	Feb 2021	3,767	655	4,422
	Mar 2021	4,657	830	5,487
	Apr 2021	4,398	750	5,148
	May 2021	4,870	736	5,606
	Jun 2021	4,412	592	5,004
	Jul 2021	3,914	570	4,484
	Aug 2021	3,866	482	4,348
	Sep 2021	4,559	564	5,123
	Oct 2021	5,213	630	5,843
	Nov 2021	4,689	541	5,230
	Dec 2021	4,601	557	5,158
	Total	52,964	7,701	60,665
2022	Jan 2022	4,274	523	4,797
	Feb 2022	4,867	635	5,502
	Total	9,141	1,158	10,299
Grand Total		335,233	95,643	430,876

Table 3: Source of CPS Reports and CWS Referrals

	Source	Feb 2021	Mar 2021	Apr 2021	May 2021	Jun 2021	Jul 2021	Aug 2021	Sep 2021	Oct 2021	Nov 2021	Dec 2021	Jan 2022	Feb 2022		13 Month Total	
CPS Reports and CWS Referrals	School Staff	664	989	759	913	531	145	83	863	1,450	1,303	1,252	983	1,549	28%	11,484	17%
	Healthcare Provider	815	930	897	917	819	839	789	824	780	746	706	746	750	14%	10,558	16%
	Law Enforcement	1,122	1,311	1,329	1,542	1,466	1,442	1,384	1,397	1,446	1,340	1,341	1,238	1,234	22%	17,592	27%
	Government Agency	261	323	309	272	221	248	265	266	222	205	209	212	253	5%	3,266	5%
	Parent	302	392	409	387	396	392	404	347	393	377	378	347	349	6%	4,873	7%
	Relative/Friend/Neighbor	284	332	338	355	382	362	363	372	350	289	342	337	275	5%	4,381	7%
	Anonymous	415	499	450	487	476	387	401	444	506	364	367	366	461	8%	5,623	9%
	CP&P	61	96	89	89	76	58	45	60	73	45	49	54	56	1%	851	1%
	Court/Legal	91	127	102	111	119	125	88	120	126	89	89	100	108	2%	1,395	2%
	Community Group/Individual	152	182	159	175	176	149	159	137	175	169	144	158	183	3%	2,118	3%
	Facility Staff (incl Correctional Facility)	48	52	64	67	66	65	69	51	55	47	53	54	56	1%	747	1%
	Child (Self)	27	35	37	33	22	26	49	41	42	28	30	29	29	1%	428	1%
	Other	171	204	197	245	245	226	236	189	214	217	182	160	183	3%	2,669	4%
	Daycare/Babysitter	9	15	9	13	9	20	13	12	11	11	16	13	16	0%	167	0%
Total		4,422	5,487	5,148	5,606	5,004	4,484	4,348	5,123	5,843	5,230	5,158	4,797	5,502		66,152	

Table 4: Monthly Count of CPS Reports and CWS Referrals Assigned to Counties

County														Average Number of Assignments Last 13 Months	Jan 22 to Feb 22 Numerical Difference
	Feb 2021	Mar 2021	Apr 2021	May 2021	Jun 2021	Jul 2021	Aug 2021	Sep 2021	Oct 2021	Nov 2021	Dec 2021	Jan 2022	Feb 2022		
Atlantic	185	237	224	265	241	197	182	215	255	234	215	189	245	222	56
Bergen	289	323	314	343	273	255	249	325	350	345	360	290	354	313	64
Burlington	232	297	269	307	286	238	223	263	280	264	270	264	283	267	19
Camden	432	497	459	456	403	381	371	466	511	407	419	404	449	435	45
Cape May	73	87	68	81	56	81	72	70	70	66	70	62	59	70	-3
Cumberland	154	203	190	173	165	153	140	180	196	167	190	149	160	171	11
Essex	452	530	441	520	501	457	442	484	565	535	489	456	550	494	94
Gloucester	176	239	237	219	228	205	207	208	221	215	204	216	195	213	-21
Hudson	243	305	313	341	319	255	287	303	371	349	321	341	392	318	51
Hunterdon	42	41	47	47	34	37	33	39	52	44	44	40	33	41	-7
Mercer	184	221	213	264	230	200	185	222	245	218	230	189	229	218	40
Middlesex	295	382	364	428	349	299	317	385	472	355	408	356	464	375	108
Monmouth	289	304	294	296	262	249	256	250	331	294	294	260	288	282	28
Morris	139	198	168	162	190	141	137	173	185	189	176	193	193	173	0
Ocean	291	394	389	396	360	290	310	337	382	341	333	304	305	341	1
Passaic	243	310	326	346	291	285	245	313	402	350	330	274	354	313	80
Salem	64	83	76	76	64	61	48	75	78	56	57	65	74	67	9
Somerset	120	130	139	153	130	108	97	131	148	130	111	112	141	127	29
Sussex	73	103	95	78	70	62	67	90	99	85	72	84	100	83	16
Union	218	271	260	321	266	240	226	256	293	277	277	257	290	266	33
Warren	70	102	73	104	86	87	55	99	68	93	67	86	83	83	-3
County Subtotals	4,264	5,257	4,959	5,376	4,804	4,281	4,149	4,884	5,574	5,014	4,937	4,591	5,241	4,872	650
Central Region IAIU	20	30	20	41	22	35	25	42	53	31	37	32	43	33	11
Metro Region IAIU	11	22	14	18	17	11	22	36	29	26	21	27	36	22	9
Northern Region IAIU	14	23	20	28	18	23	19	27	39	44	42	28	40	28	12
Southern Region IAIU	34	46	35	48	33	42	42	51	41	33	42	35	46	41	11
IAIU Subtotals	79	121	89	135	90	111	108	156	162	134	142	122	165	124	43
¹ Unable to Determine	79	108	98	94	108	89	91	83	107	82	78	84	92	92	8
Other Offices	0	1	2	1	2	3	0	0	0	0	1	0	4	1	4
Grand Total	4,422	5,487	5,148	5,606	5,004	4,484	4,348	5,123	5,843	5,230	5,158	4,797	5,502	5,089	705

¹CPS Reports or CWS Referrals not assigned to an office through the Assignment Designee, but were assigned to an office for an assessment or investigation.



Table 5: Monthly Count of CPS Reports and CWS Referrals Assigned to CP&P Local Offices

County	Local Office	Type of Referral	Feb 2021	Mar 2021	Apr 2021	May 2021	Jun 2021	Jul 2021	Aug 2021	Sep 2021	Oct 2021	Nov 2021	Dec 2021	Jan 2022	Feb 2022	Total
ATLANTIC	Atlantic East	CPS	98	105	105	128	130	95	97	106	126	118	104	114	124	1,450
		CWS	14	15	21	22	14	12	17	10	13	12	14	9	13	186
		Total	112	120	126	150	144	107	114	116	139	130	118	123	137	1,636
	Atlantic West	CPS	63	100	87	94	83	83	60	82	104	90	85	58	90	1,079
		CWS	10	17	11	21	14	7	8	17	12	14	12	8	18	169
		Total	73	117	98	115	97	90	68	99	116	104	97	66	108	1,248
	County Totals	CPS	161	205	192	222	213	178	157	188	230	208	189	172	214	2,529
		CWS	24	32	32	43	28	19	25	27	25	26	26	17	31	355
		Total	185	237	224	265	241	197	182	215	255	234	215	189	245	2,884
BERGEN	Bergen Central	CPS	96	123	111	122	89	85	85	132	139	133	127	111	152	1,505
		CWS	25	18	17	12	15	10	6	13	19	18	11	13	17	194
		Total	121	141	128	134	104	95	91	145	158	151	138	124	169	1,699
	Bergen South	CPS	140	157	161	191	157	139	147	157	177	174	197	148	170	2,115
		CWS	28	25	25	18	12	21	11	23	15	20	25	18	15	256
		Total	168	182	186	209	169	160	158	180	192	194	222	166	185	2,371
	County Totals	CPS	236	280	272	313	246	224	232	289	316	307	324	259	322	3,620
		CWS	53	43	42	30	27	31	17	36	34	38	36	31	32	450
		Total	289	323	314	343	273	255	249	325	350	345	360	290	354	4,070
BURLINGTON	Burlington East	CPS	111	133	121	128	129	91	91	103	137	115	111	119	121	1,510
		CWS	19	18	27	21	21	20	10	17	11	18	16	16	11	225
		Total	130	151	148	149	150	111	101	120	148	133	127	135	132	1,735
	Burlington West	CPS	87	122	98	135	117	105	100	125	115	115	128	119	127	1,493
		CWS	15	24	23	23	19	22	22	18	17	16	15	10	24	248
		Total	102	146	121	158	136	127	122	143	132	131	143	129	151	1,741
	County Totals	CPS	198	255	219	263	246	196	191	228	252	230	239	238	248	3,003
		CWS	34	42	50	44	40	42	32	35	28	34	31	26	35	473
		Total	232	297	269	307	286	238	223	263	280	264	270	264	283	3,476
CAMDEN	Camden Central	CPS	85	115	91	105	88	86	88	105	117	93	91	91	104	1,259
		CWS	17	22	12	17	13	12	16	15	17	15	14	16	16	202
		Total	102	137	103	122	101	98	104	120	134	108	105	107	120	1,461
	Camden East	CPS	88	118	112	104	84	81	84	101	128	94	81	84	95	1,254
		CWS	20	16	18	10	13	13	16	10	16	14	20	22	11	199
		Total	108	134	130	114	97	94	100	111	144	108	101	106	106	1,453
	Camden North	CPS	107	85	93	97	92	79	67	97	102	91	87	89	103	1,189
		CWS	15	13	15	17	11	9	13	17	15	5	14	9	16	169
		Total	122	98	108	114	103	88	80	114	117	96	101	98	119	1,358
Camden South	CPS	93	108	102	91	92	88	75	108	96	85	94	83	95	1,210	
	CWS	7	20	16	15	10	13	12	13	20	10	18	10	9	173	
	Total	100	128	118	106	102	101	87	121	116	95	112	93	104	1,383	
County Totals	CPS	373	426	398	397	356	334	314	411	443	363	353	347	397	4,912	
	CWS	59	71	61	59	47	47	57	55	68	44	66	57	52	743	
	Total	432	497	459	456	403	381	371	466	511	407	419	404	449	5,655	
CAPE MAY	Cape May	CPS	59	77	60	70	51	63	64	61	61	56	61	56	52	791
		CWS	14	10	8	11	5	18	8	9	9	10	9	6	7	124
		Total	73	87	68	81	56	81	72	70	70	66	70	62	59	915
	County Totals	CPS	59	77	60	70	51	63	64	61	61	56	61	56	52	791
		CWS	14	10	8	11	5	18	8	9	9	10	9	6	7	124
Total	73	87	68	81	56	81	72	70	70	66	70	62	59	915		
CUMBERLAND	Cumberland East	CPS	41	75	55	54	66	68	58	77	75	59	71	56	54	809
		CWS	7	11	11	11	11	4	4	8	11	6	8	11	14	117
		Total	48	86	66	65	77	72	62	85	86	65	79	67	68	926
	Cumberland West	CPS	91	101	110	91	74	73	71	89	102	94	96	67	81	1,140
		CWS	15	16	14	17	14	8	7	6	8	8	15	15	11	154
		Total	106	117	124	108	88	81	78	95	110	102	111	82	92	1,294
	County Totals	CPS	132	176	165	145	140	141	129	166	177	153	167	123	135	1,949
CWS		22	27	25	28	25	12	11	14	19	14	23	26	25	271	
Total		154	203	190	173	165	153	140	180	196	167	190	149	160	2,220	

Data in this report is preliminary and may differ from any final report. This report is produced to ensure continuous quality improvement throughout DCF.



Table 5: Monthly Count of CPS Reports and CWS Referrals Assigned to CP&P Local Offices

County	Local Office	Type of Referral	Feb 2021	Mar 2021	Apr 2021	May 2021	Jun 2021	Jul 2021	Aug 2021	Sep 2021	Oct 2021	Nov 2021	Dec 2021	Jan 2022	Feb 2022	Total
ESSEX	Essex Central	CPS	80	68	63	62	63	77	59	75	88	78	68	57	69	907
		CWS	13	11	14	9	9	15	12	6	14	7	12	6	13	141
		Total	93	79	77	71	72	92	71	81	102	85	80	63	82	1,048
	Essex North	CPS	58	81	66	79	71	68	49	50	78	85	109	81	88	963
		CWS	12	20	15	15	7	7	1	3	9	12	8	13	10	132
		Total	70	101	81	94	78	75	50	53	87	97	117	94	98	1,095
	Essex South	CPS	71	70	64	81	86	61	74	76	104	84	62	65	89	987
		CWS	13	23	13	12	13	9	9	13	14	11	15	8	11	164
		Total	84	93	77	93	99	70	83	89	118	95	77	73	100	1,151
	Newark Center City	CPS	70	63	77	74	67	67	64	75	86	64	75	79	71	932
		CWS	5	15	9	5	14	3	11	12	6	11	13	2	8	114
		Total	75	78	86	79	81	70	75	87	92	75	88	81	79	1,046
	Newark Northeast	CPS	54	66	54	83	70	61	61	71	75	80	50	68	91	884
		CWS	9	13	11	10	11	18	7	9	14	6	5	8	13	134
		Total	63	79	65	93	81	79	68	80	89	86	55	76	104	1,018
	Newark South	CPS	56	82	45	83	86	58	81	83	72	85	65	55	79	930
		CWS	11	18	10	7	4	13	14	11	5	12	7	14	8	134
		Total	67	100	55	90	90	71	95	94	77	97	72	69	87	1,064
	County Totals	CPS	389	430	369	462	443	392	388	430	503	476	429	405	487	5603
		CWS	63	100	72	58	58	65	54	54	62	59	60	51	63	819
		Total	452	530	441	520	501	457	442	484	565	535	489	456	550	6,422
GLOUCESTER	Gloucester East	CPS	62	93	91	94	85	85	76	80	97	88	90	86	84	1111
		CWS	13	19	17	16	13	15	8	19	13	13	7	14	12	179
		Total	75	112	108	110	98	100	84	99	110	101	97	100	96	1,290
	Gloucester West	CPS	89	116	114	96	109	90	113	97	93	95	92	103	91	1,298
		CWS	12	11	15	13	21	15	10	12	18	19	15	13	8	182
		Total	101	127	129	109	130	105	123	109	111	114	107	116	99	1,480
	County Totals	CPS	151	209	205	190	194	175	189	177	190	183	182	189	175	2,409
CWS		25	30	32	29	34	30	18	31	31	32	22	27	20	361	
Total		176	239	237	219	228	205	207	208	221	215	204	216	195	2,770	
HUDSON	Hudson Central	CPS	68	98	78	96	78	63	104	78	111	80	70	78	93	1,095
		CWS	6	32	16	16	20	11	8	15	13	18	15	9	18	197
		Total	74	130	94	112	98	74	112	93	124	98	85	87	111	1,292
	Hudson North	CPS	55	55	59	72	57	60	60	59	68	80	81	90	98	894
		CWS	15	11	14	14	7	11	12	11	9	6	8	5	12	135
		Total	70	66	73	86	64	71	72	70	77	86	89	95	110	1,029
	Hudson South	CPS	25	34	50	50	74	37	41	51	54	68	59	62	69	674
		CWS	7	9	14	12	8	7	3	9	12	4	5	12	8	110
		Total	32	43	64	62	82	44	44	60	66	72	64	74	77	784
	Hudson West	CPS	55	58	69	68	65	61	52	72	93	87	77	76	87	920
		CWS	12	8	13	13	10	5	7	8	11	6	6	9	7	115
		Total	67	66	82	81	75	66	59	80	104	93	83	85	94	1,035
	County Totals	CPS	203	245	256	286	274	221	257	260	326	315	287	306	347	3,583
		CWS	40	60	57	55	45	34	30	43	45	34	34	35	45	557
		Total	243	305	313	341	319	255	287	303	371	349	321	341	392	4,140
HUNTERDON	Hunterdon	CPS	38	34	38	38	29	35	32	35	49	42	42	36	30	478
		CWS	4	7	9	9	5	2	1	4	3	2	2	4	3	55
		Total	42	41	47	47	34	37	33	39	52	44	44	40	33	533
	County Totals	CPS	38	34	38	38	29	35	32	35	49	42	42	36	30	478
		CWS	4	7	9	9	5	2	1	4	3	2	2	4	3	55
Total	42	41	47	47	34	37	33	39	52	44	44	40	33	533		
MERCER	Mercer North	CPS	81	93	108	128	113	92	90	103	85	97	95	87	99	1,271
		CWS	11	9	8	11	17	20	12	13	18	12	12	13	16	172
		Total	92	102	116	139	130	112	102	116	103	109	107	100	115	1,443
	Mercer South	CPS	72	99	81	109	88	74	76	91	128	101	108	76	107	1,210
		CWS	20	20	16	16	12	14	7	15	14	8	15	13	7	177
		Total	92	119	97	125	100	88	83	106	142	109	123	89	114	1,387
	County Totals	CPS	153	192	189	237	201	166	166	194	213	198	203	163	206	2,481
CWS		31	29	24	27	29	34	19	28	32	20	27	26	23	349	
Total		184	221	213	264	230	200	185	222	245	218	230	189	229	2,830	

Data in this report is preliminary and may differ from any final report. This report is produced to ensure continuous quality improvement throughout DCF.

Table 5: Monthly Count of CPS Reports and CWS Referrals Assigned to CP&P Local Offices

County	Local Office	Type of Referral	Feb 2021	Mar 2021	Apr 2021	May 2021	Jun 2021	Jul 2021	Aug 2021	Sep 2021	Oct 2021	Nov 2021	Dec 2021	Jan 2022	Feb 2022	Total	
MIDDLESEX	Middlesex Central	CPS	73	98	110	99	103	81	71	91	118	101	114	114	125	1298	
		CWS	17	13	20	11	15	10	7	12	17	9	10	5	19	165	
		Total	90	111	130	110	118	91	78	103	135	110	124	119	144	1463	
	Middlesex Coastal	CPS	84	121	96	131	102	93	109	132	149	120	120	113	138	1508	
		CWS	13	21	16	20	11	9	14	9	12	9	12	6	10	162	
		Total	97	142	112	151	113	102	123	141	161	129	132	119	148	1670	
	Middlesex West	CPS	91	107	104	142	104	95	106	127	162	106	146	109	153	1552	
		CWS	17	22	18	25	14	11	10	14	14	10	6	9	19	189	
		Total	108	129	122	167	118	106	116	141	176	116	152	118	172	1741	
	County Totals	CPS	248	326	310	372	309	269	286	350	429	327	380	336	416	4358	
		CWS	47	56	54	56	40	30	31	35	43	28	28	20	48	516	
		Total	295	382	364	428	349	299	317	385	472	355	408	356	464	4874	
MONMOUTH	Monmouth North	CPS	149	154	135	146	124	121	125	123	186	132	158	132	145	1830	
		CWS	21	22	15	20	11	10	16	11	14	17	17	11	12	197	
		Total	170	176	150	166	135	131	141	134	200	149	175	143	157	2027	
	Monmouth South	CPS	102	114	131	120	116	107	109	109	120	134	108	100	114	1484	
		CWS	17	14	13	10	11	11	6	7	11	11	11	17	17	156	
		Total	119	128	144	130	127	118	115	116	131	145	119	117	131	1640	
	County Totals	CPS	251	268	266	266	240	228	234	232	306	266	266	232	259	3314	
		CWS	38	36	28	30	22	21	22	18	25	28	28	28	29	353	
		Total	289	304	294	296	262	249	256	250	331	294	294	260	288	3667	
	MORRIS	Morris East	CPS	58	82	62	75	89	53	70	67	74	82	73	75	101	961
CWS			9	14	14	11	7	7	4	8	8	6	7	12	11	5	115
Total			67	96	76	86	96	60	74	75	80	89	85	86	106	1076	
Morris West		CPS	65	89	78	70	86	76	57	89	95	90	84	99	78	1056	
		CWS	7	13	14	6	8	5	6	9	10	10	7	8	9	112	
		Total	72	102	92	76	94	81	63	98	105	100	91	107	87	1168	
County Totals		CPS	123	171	140	145	175	129	127	156	169	172	157	174	179	2017	
		CWS	16	27	28	17	15	12	10	17	16	17	19	19	14	227	
		Total	139	198	168	162	190	141	137	173	185	189	176	193	193	2244	
OCEAN		Ocean North	CPS	139	167	171	182	173	142	148	162	178	172	159	154	151	2098
	CWS		20	34	31	19	20	18	17	11	15	13	14	18	22	252	
	Total		159	201	202	201	193	160	165	173	193	185	173	172	173	2350	
	Ocean South	CPS	109	176	161	176	148	110	136	149	170	144	145	123	116	1863	
		CWS	23	17	26	19	19	20	9	15	19	12	15	9	16	219	
		Total	132	193	187	195	167	130	145	164	189	156	160	132	132	2082	
	County Totals	CPS	248	343	332	358	321	252	284	311	348	316	304	277	267	3961	
		CWS	43	51	57	38	39	38	26	26	34	25	29	27	38	471	
		Total	291	394	389	396	360	290	310	337	382	341	333	304	305	4432	
	PASSAIC	Passaic Central	CPS	102	134	135	158	115	132	90	143	169	160	155	144	165	1802
CWS			21	26	15	26	12	9	11	20	22	18	14	15	29	238	
Total			123	160	150	184	127	141	101	163	191	178	169	159	194	2040	
Passaic North		CPS	102	124	150	142	153	126	130	135	193	157	152	104	136	1804	
		CWS	18	26	26	20	11	18	14	15	18	15	9	11	24	225	
		Total	120	150	176	162	164	144	144	150	211	172	161	115	160	2029	
County Totals		CPS	204	258	285	300	268	258	220	278	362	317	307	248	301	3606	
		CWS	39	52	41	46	23	27	25	35	40	33	23	26	53	463	
		Total	243	310	326	346	291	285	245	313	402	350	330	274	354	4069	
SALEM		Salem	CPS	56	72	67	63	59	51	41	66	71	50	49	58	59	762
	CWS		8	11	9	13	5	10	7	9	7	6	8	7	15	115	
	Total		64	83	76	76	64	61	48	75	78	56	57	65	74	877	
	County Totals	CPS	56	72	67	63	59	51	41	66	71	50	49	58	59	762	
		CWS	8	11	9	13	5	10	7	9	7	6	8	7	15	115	
		Total	64	83	76	76	64	61	48	75	78	56	57	65	74	877	
SOMERSET	Somerset	CPS	104	119	127	125	114	96	85	128	133	125	101	103	132	1492	
		CWS	16	11	12	28	16	12	12	3	15	5	10	9	9	158	
		Total	120	130	139	153	130	108	97	131	148	130	111	112	141	1650	
	County Totals	CPS	104	119	127	125	114	96	85	128	133	125	101	103	132	1492	
		CWS	16	11	12	28	16	12	12	3	15	5	10	9	9	158	
Total		120	130	139	153	130	108	97	131	148	130	111	112	141	1650		



Table 5: Monthly Count of CPS Reports and CWS Referrals Assigned to CP&P Local Offices

County	Local Office	Type of Referral														Total	
			Feb 2021	Mar 2021	Apr 2021	May 2021	Jun 2021	Jul 2021	Aug 2021	Sep 2021	Oct 2021	Nov 2021	Dec 2021	Jan 2022	Feb 2022		
SUSSEX	Sussex	CPS	66	93	86	70	64	52	62	82	86	71	67	77	89	965	
		CWS	7	10	9	8	6	10	5	8	13	14	5	7	11	113	
		Total	73	103	95	78	70	62	67	90	99	85	72	84	100	1078	
	County Totals	CPS	66	93	86	70	64	52	62	82	86	71	67	77	89	965	
		CWS	7	10	9	8	6	10	5	8	13	14	5	7	11	113	
		Total	73	103	95	78	70	62	67	90	99	85	72	84	100	1078	
UNION	Union Central	CPS	57	68	67	88	70	74	65	72	87	64	82	56	78	928	
		CWS	10	25	14	17	5	10	9	8	3	11	5	10	8	135	
		Total	67	93	81	105	75	84	74	80	90	75	87	66	86	1063	
	Union East	CPS	73	66	61	88	95	72	68	66	93	88	87	108	75	1040	
		CWS	5	15	15	18	9	2	8	11	9	9	15	8	9	133	
		Total	78	81	76	106	104	74	76	77	102	97	102	116	84	1173	
	Union West	CPS	65	79	80	101	79	70	70	89	93	95	79	67	108	1075	
		CWS	8	18	23	9	8	12	6	10	8	10	9	8	12	141	
		Total	73	97	103	110	87	82	76	99	101	105	88	75	120	1216	
	County Totals	CPS	195	213	208	277	244	216	203	227	273	247	248	231	261	3043	
		CWS	23	58	52	44	22	24	23	29	20	30	29	26	29	409	
		Total	218	271	260	321	266	240	226	256	293	277	277	257	290	3452	
	WARREN	Warren	CPS	57	83	64	87	77	78	51	91	64	86	62	77	77	954
			CWS	13	19	9	17	9	9	4	8	4	7	5	9	6	119
			Total	70	102	73	104	86	87	55	99	68	93	67	86	83	1073
County Totals		CPS	57	83	64	87	77	78	51	91	64	86	62	77	77	954	
		CWS	13	19	9	17	9	9	4	8	4	7	5	9	6	119	
		Total	70	102	73	104	86	87	55	99	68	93	67	86	83	1073	
County CPS Referral Total		CPS	3,645	4,475	4,248	4,686	4,264	3,754	3,712	4,360	5,001	4,508	4,417	4,107	4,653	55,830	
County CWS Referral Total		CWS	619	782	711	690	540	527	437	524	573	506	520	484	588	7,501	
County Referral Total		Total	4,264	5,257	4,959	5,376	4,804	4,281	4,149	4,884	5,574	5,014	4,937	4,591	5,241	63,331	
Central Region IAIU		CPS	20	30	20	41	22	35	25	42	53	31	37	32	43	431	
		CWS	0	0	0	0	0	0	0	0	0	0	0	0	0	0	
		Total	20	30	20	41	22	35	25	42	53	31	37	32	43	431	
Metro Region IAIU		CPS	11	22	14	18	17	11	22	36	28	26	21	27	36	289	
		CWS	0	0	0	0	0	0	0	0	1	0	0	0	0	1	
		Total	11	22	14	18	17	11	22	36	29	26	21	27	36	290	
Northern Region IAIU		CPS	14	22	20	28	18	23	19	27	39	44	41	28	40	363	
		CWS	0	1	0	0	0	0	0	0	0	0	1	0	0	2	
		Total	14	23	20	28	18	23	19	27	39	44	42	28	40	365	
Southern Region IAIU		CPS	34	46	35	48	33	42	42	51	41	33	42	35	46	528	
		CWS	0	0	0	0	0	0	0	0	0	0	0	0	0	0	
		Total	34	46	35	48	33	42	42	51	41	33	42	35	46	528	
IAIU CPS Subtotal		CPS	79	120	89	135	90	111	108	156	161	134	141	122	165	1,611	
IAIU CWS Subtotal		CWS	0	1	0	0	0	0	0	0	1	0	1	0	0	3	
IAIU Subtotal		Total	79	121	89	135	90	111	108	156	162	134	142	122	165	1,614	
County and IAIU CPS Subtotal		CPS	3,724	4,595	4,337	4,821	4,354	3,865	3,820	4,516	5,162	4,642	4,558	4,229	4,818	57,441	
County and IAIU CWS Subtotal		CWS	619	783	711	690	540	527	437	524	574	506	521	484	588	7,504	
Unable to Determine(1)		Total	79	108	98	94	108	89	91	83	107	82	78	84	92	1,193	
Other Offices		Total	0	1	2	1	2	3	0	0	0	0	1	0	4	14	
Grand Total		Total	4,422	5,487	5,148	5,606	5,004	4,484	4,348	5,123	5,843	5,230	5,158	4,797	5,502	66,152	

(1)CPS Reports or CWS Referrals not assigned to an office through the Assignment Designee, but were assigned to an office for an assessment or investigation.