



NEW JERSEY DEPARTMENT OF
CHILDREN AND FAMILIES

Child Protection and Permanency

Monthly Screening and Investigation Report February 2023

Christine Norbut Beyer, MSW
Commissioner



Table of Contents

Table 1: NJ State Central Registry Activity: Monthly Child Abuse and Neglect Hotline Calls, Intakes and Assignments to Child Protection & Permanency (CP&P) Offices

Chart 1: CP&P Annual Trends in Child Protection Services (CPS) Reports and Child Welfare Services (CWS) Referrals

Table 2: Assignments to CP&P Offices: CPS Reports and CWS Referrals

Table 3: Source of CPS Reports and CWS Referrals

Table 4: Monthly Count of CPS Reports and CWS Referrals Assigned to Counties

Table 5: Monthly Count of CPS Reports and CWS Referrals Assigned to CP&P Local Offices

Table 1: NJ State Central Registry Activity: Monthly Child Abuse and Neglect Hotline Calls, Intakes and Assignments to CP&P Offices^{1,2,7}

2022-2023	Hotline Call Activity				Intakes Recorded in NJ SPIRIT ^{6,8}													Assignments to CP&P Offices					
	Total Calls to SCR ³	Abandon Calls ⁴	Average Time to Answer (seconds)	Resulting NJS Intakes ⁵	CPS Reports		CWS Referrals		No Action Required (NAR)		Related Information (RI)		Information & Referral (I&R)		Information Only (IO)		Unusual Incident (UIRS)		CPS Reports		CWS Referrals		Total
					n	%	n	%	n	%	n	%	n	%	n	%	n	%	n	%	n	%	
February 2022	13,523	1,838	304	12,923	4,867	37.7%	632	4.9%	168	1.3%	2,732	21.1%	2,990	23.1%	1,524	11.8%	10	0.1%	4,867	88.5%	635	11.5%	5,502
March 2022	15,347	1,916	281	14,886	5,781	38.8%	727	4.9%	207	1.4%	2,946	19.8%	3,468	23.3%	1,750	11.8%	7	0.0%	5,780	88.8%	727	11.2%	6,507
April 2022	13,145	2,124	398	12,290	4,669	38.0%	637	5.2%	168	1.4%	2,486	20.2%	2,786	22.7%	1,537	12.5%	7	0.1%	4,669	88.0%	636	12.0%	5,305
May 2022	13,609	1,526	201	13,433	5,228	38.9%	644	4.8%	177	1.3%	2,804	20.9%	2,967	22.1%	1,604	11.9%	9	0.1%	5,228	89.0%	647	11.0%	5,875
June 2022	13,105	1,997	325	12,478	4,854	38.9%	597	4.8%	196	1.6%	2,678	21.5%	2,580	20.7%	1,569	12.6%	4	0.0%	4,854	89.0%	598	11.0%	5,452
July 2022	11,225	1,022	164	11,445	4,277	37.4%	590	5.2%	155	1.4%	2,712	23.7%	1,956	17.1%	1,749	15.3%	6	0.1%	4,277	87.9%	590	12.1%	4,867
August 2022	10,651	841	101	16,623	4,103	24.7%	589	3.5%	164	1.0%	2,465	14.8%	4,070	24.5%	5,202	31.3%	30	0.2%	4,103	87.4%	589	12.6%	4,692
September 2022	12,502	1,199	129	12,828	4,810	37.5%	681	5.3%	178	1.4%	2,818	22.0%	2,724	21.2%	1,614	12.6%	3	0.0%	4,810	87.6%	680	12.4%	5,490
October 2022	13,496	1,226	142	16,804	5,356	31.9%	724	4.3%	178	1.1%	3,153	18.8%	4,212	25.1%	3,160	18.8%	21	0.1%	5,356	88.1%	725	11.9%	6,081
November 2022	12,599	1,217	156	12,974	4,852	37.4%	762	5.9%	189	1.5%	2,998	23.1%	2,658	20.5%	1,509	11.6%	6	0.0%	4,852	86.4%	762	13.6%	5,614
December 2022	11,707	673	88	12,589	4,560	36.2%	730	5.8%	125	1.0%	2,922	23.2%	2,471	19.6%	1,579	12.5%	2	0.0%	4,760	86.7%	731	13.3%	5,491
January 2023	14,498	1,681	188	12,390	5,215	35.8%	962	4.9%	173	1.3%	3,234	20.7%	3,011	22.1%	1,609	15.2%	2	0.1%	5,463	90.3%	962	14.5%	6,425
February 2023	13,385	1,497	162	13,589	4,921	35.8%	893	4.9%	143	1.3%	3,234	20.7%	2,923	22.1%	1,473	15.2%	2	0.1%	5,141	90.3%	891	14.5%	6,032
				13,481	4,884	36.2%	705	5.2%	171	1.3%	2,860	21.2%	2,986	22.1%	1,991	14.8%	8	0.1%	4,884	87.7%	705	12.7%	5,571
Overall Total	12,984	1,443		175,252	63,493		9,168		2,221		37,182		38,816		25,879		109		64,160	87.5%	9,173	12.5%	73,333

¹Comes from three distinct sources: (1) the Automatic Call Distribution (ACD) phone system; which keeps a count of the number of calls and call routing; (2) Monthly NJSpirit Intakes; which record decision making on calls received by hotline screeners, and (3)

²The number of Intakes, CPS Reports, and CWS Referrals are based on an extract from NJSpirit.

Data extracted by the Office of Research, Evaluation, and Reporting on **March 08, 2023** includes all Intakes, CPS Reports, and CWS Referrals received from **February 01, 2023** through **February 28, 2023**.

³The number calls received through the ACD System that were directed to a screener from any call-in phone number.

⁴The number of calls received through the ACD System that are abandoned either while waiting in queue or while ringing.

⁵The number of Intakes entered in NJSpirit from the number of calls received.

⁶The number of Intakes recorded in NJSpirit, by type of Intake. There is not a one-to-one relationship between an ACD call and an Intake; multiple calls to State Central Registry (SCR) may result in a single Intake, or one call may result in multiple Intakes.

⁷Intake: The process of documenting: a report of alleged abuse or neglect of a child (CPS); a request for services on behalf of a child, or a referral of a child for services (CWS); a call in which the caller provides additional or clarifying information about a current

CP&P Annual Trends in CPS Reports and CWS Referrals

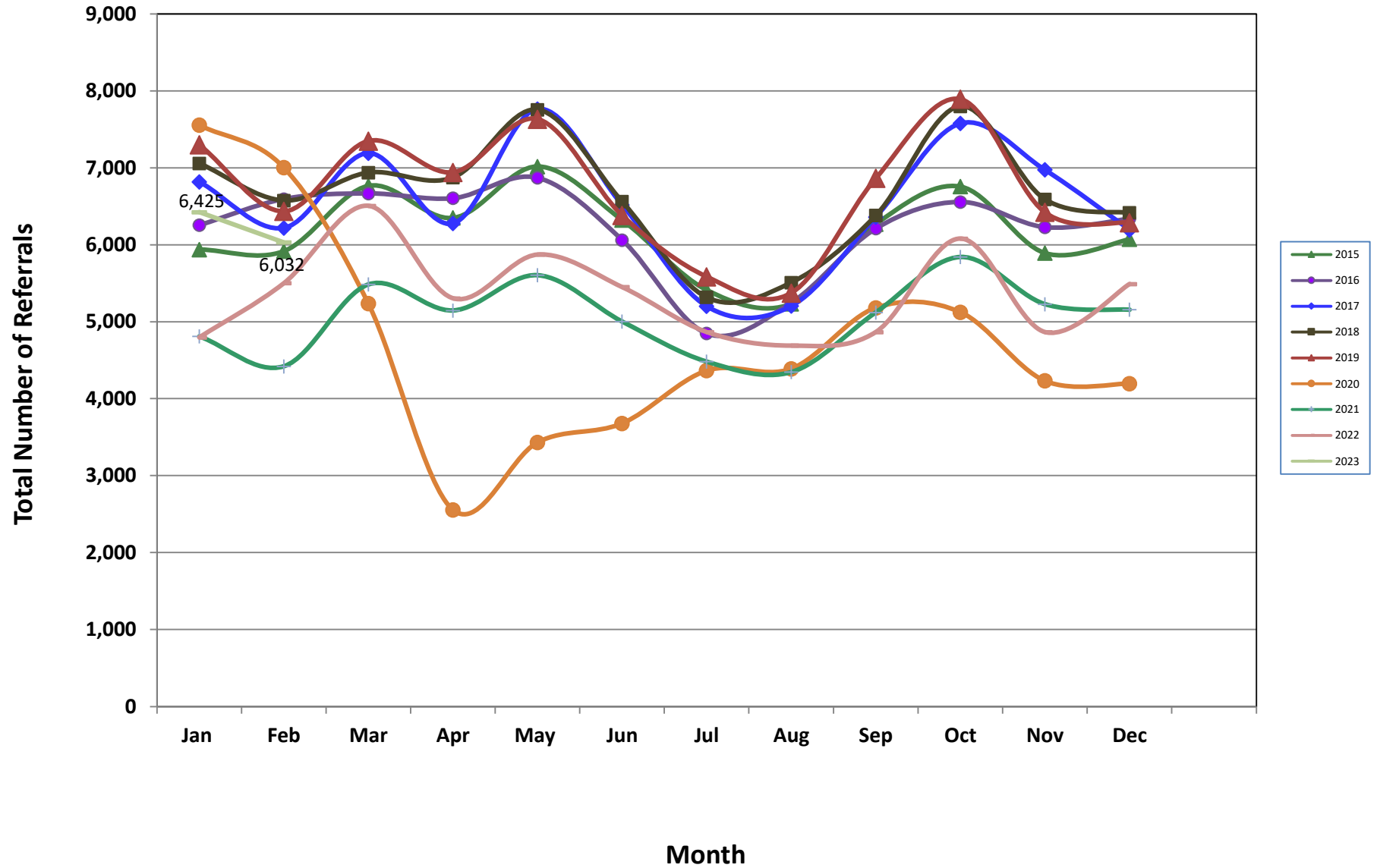


Table 2: Assignments to CP&P Offices: CPS Reports and CWS Referrals¹

Intake Date ³		CPS Reports ²	CWS Referrals ²	Total Assignments ²
2018	Jan 2018	5,276	1,784	7,060
	Feb 2018	4,933	1,644	6,577
	Mar 2018	5,212	1,727	6,939
	Apr 2018	5,275	1,601	6,876
	May 2018	5,920	1,836	7,756
	Jun 2018	4,948	1,615	6,563
	Jul 2018	4,011	1,308	5,319
	Aug 2018	4,102	1,408	5,510
	Sep 2018	4,748	1,634	6,382
	Oct 2018	5,790	2,011	7,801
	Nov 2018	4,973	1,620	6,593
	Dec 2018	4,891	1,527	6,418
	Total	60,079	19,715	79,794
2019	Jan 2019	5,443	1,858	7,301
	Feb 2019	4,811	1,628	6,439
	Mar 2019	5,677	1,824	7,501
	Apr 2019	5,313	1,630	6,943
	May 2019	5,853	1,781	7,634
	Jun 2019	4,874	1,509	6,383
	Jul 2019	4,277	1,309	5,586
	Aug 2019	4,068	1,306	5,374
	Sep 2019	5,315	1,551	6,866
	Oct 2019	5,968	1,926	7,894
	Nov 2019	4,991	1,432	6,423
	Dec 2019	4,855	1,434	6,289
	Total	61,445	19,188	80,633
2020	Jan 2020	5,715	1,842	7,557
	Feb 2020	5,380	1,624	7,004
	Mar 2020	4,172	1,065	5,237
	Apr 2020	2,149	407	2,556
	May 2020	2,897	537	3,434
	Jun 2020	3,045	636	3,681
	Jul 2020	3,628	738	4,366
	Aug 2020	3,569	822	4,391
	Sep 2020	4,153	1,030	5,183
	Oct 2020	4,257	868	5,125
	Nov 2020	3,564	670	4,234
	Dec 2020	3,517	681	4,198
	Total	46,046	10,920	56,966

Table 2: Assignments to CP&P Offices: CPS Reports and CWS Referrals¹

Intake Date ³		CPS Reports ²	CWS Referrals ²	Total Assignments ²
2021	Jan 2021	4,018	794	4,812
	Feb 2021	3,767	655	4,422
	Mar 2021	4,657	830	5,487
	Apr 2021	4,398	750	5,148
	May 2021	4,870	736	5,606
	Jun 2021	4,412	592	5,004
	Jul 2021	3,914	570	4,484
	Aug 2021	3,866	482	4,348
	Sep 2021	4,559	564	5,123
	Oct 2021	5,213	630	5,843
	Nov 2021	4,689	541	5,230
	Dec 2021	4,601	557	5,158
	Total	52,964	7,701	60,665
2022	Jan 2022	4,274	523	4,797
	Feb 2022	4,867	635	5,502
	Mar 2022	5,780	727	6,507
	Apr 2022	4,669	636	5,305
	May 2022	5,228	647	5,875
	Jun 2022	4,854	598	5,452
	Jul 2022	4,277	590	4,867
	Aug 2022	4,103	589	4,692
	Sep 2022	4,810	680	5,490
	Oct 2022	5,356	725	6,081
	Nov 2022	4,852	762	5,614
	Dec 2022	4,760	731	5,491
	Total	57,830	7,843	65,673
2023	Jan 2023	5,463	962	6,425
	Feb 2023	5,141	891	6,032
	Total	10,604	1,853	12,457
Grand Total		278,364	65,367	356,188

¹Source of Data: NJ SPIRIT

²A CPS Report or a CWS Referral may include multiple children in a family, with one or more allegation or request for services. In these cases, each CPS Report or CWS Referral is counted once - the CPS Report or the CWS Referral is the unit of analysis rather than the child.

³Prior to January 2014, the number of CPS Reports and CWS Referrals was based on the type of assignment of the CPS Report or CWS Referral. Beginning in January 2014, the number of CPS Reports and CWS Referrals is based on the number of CPS Reports and CWS Referrals received.

Table 3: Source of CPS Reports and CWS Referrals

	Source	Feb 2022	Mar 2022	Apr 2022	May 2022	Jun 2022	Jul 2022	Aug 2022	Sep 2022	Oct 2022	Nov 2022	Dec 2022	Jan 2023	Feb 2023		13 Month Total	
CPS Reports and CWS Referrals	School Staff	1,549	1,998	1,227	1,456	929	162	91	1,130	1,602	1,394	1,302	1,809	1,776	29%	14,649	22%
	Healthcare Provider	750	895	728	763	786	787	777	747	843	825	836	843	865	14%	9,580	14%
	Law Enforcement	1,234	1,478	1,373	1,513	1,549	1,624	1,617	1,421	1,514	1,422	1,416	1,525	1,391	23%	17,686	26%
	Government Agency	253	261	261	233	262	276	260	243	258	240	231	298	273	5%	3,076	5%
	Parent	349	380	333	383	399	420	413	421	426	342	383	419	351	6%	4,668	7%
	Relative/Friend/Neighbor	275	298	301	344	318	380	346	337	296	313	291	304	267	4%	3,803	6%
	Anonymous	461	471	410	527	493	437	458	502	480	458	416	489	435	7%	5,602	8%
	CP&P	56	75	62	42	53	53	46	57	49	45	42	58	60	1%	638	1%
	Court/Legal	108	144	140	116	136	144	147	139	135	113	122	135	121	2%	1,579	2%
	Community Group/Individual	183	198	176	201	205	235	211	180	158	165	163	217	209	3%	2,292	3%
	Facility Staff (incl Correctional Facility)	56	55	59	62	59	59	52	35	44	45	43	50	38	1%	619	1%
	Child (Self)	29	25	25	18	28	30	34	33	21	25	24	42	30	0%	334	0%
	Other	183	209	188	194	222	241	216	224	233	199	208	210	190	3%	2,527	4%
	Daycare/Babysitter	16	20	22	23	13	19	24	21	22	28	14	26	26	0%	248	0%
	Total		5,502	6,507	5,305	5,875	5,452	4,867	4,692	5,490	6,081	5,614	5,491	6,425	6,032		67,301

Table 4: Monthly Count of CPS Reports and CWS Referrals Assigned to Counties

County														Average Number of Assignments Last 13 Months	Feb 22 to Feb 23 Numerical Difference
	Feb 2022	Mar 2022	Apr 2022	May 2022	Jun 2022	Jul 2022	Aug 2022	Sep 2022	Oct 2022	Nov 2022	Dec 2022	Jan 2023	Feb 2023		
Atlantic	245	268	222	250	233	197	217	236	256	197	243	281	222	236	-59
Bergen	354	425	348	327	349	305	276	315	356	350	344	407	398	350	-9
Burlington	283	359	255	300	292	284	240	305	314	332	288	335	300	299	-35
Camden	449	542	458	474	422	385	415	511	499	472	461	486	481	466	-5
Cape May	59	74	62	68	69	76	78	80	81	69	63	74	67	71	-7
Cumberland	160	202	166	206	182	180	166	174	195	183	185	215	171	183	-44
Essex	550	647	532	581	517	477	497	528	590	562	547	636	612	560	-24
Gloucester	195	257	217	218	206	211	190	222	221	248	235	264	233	224	-31
Hudson	392	415	324	409	327	323	242	356	352	342	370	408	388	358	-20
Hunterdon	33	55	46	38	56	29	32	52	54	49	39	53	41	44	-12
Mercer	229	263	217	258	229	239	232	236	294	240	227	245	287	246	42
Middlesex	464	520	388	432	404	283	308	409	436	422	406	504	454	418	-50
Monmouth	288	342	297	332	286	236	266	289	317	317	277	323	321	299	-2
Morris	193	213	180	216	205	165	171	190	230	179	195	239	221	200	-18
Ocean	305	370	332	372	375	340	320	356	391	352	341	382	350	353	-32
Passaic	354	415	347	385	350	295	264	323	396	326	348	420	385	354	-35
Salem	74	84	55	81	53	62	67	70	60	64	73	83	65	69	-18
Somerset	141	165	107	142	132	113	92	130	174	137	133	171	173	139	2
Sussex	100	107	95	95	95	73	69	87	114	103	85	115	87	94	-28
Union	290	363	317	332	310	281	259	265	353	301	293	346	370	314	24
Warren	83	121	79	86	85	73	78	100	91	80	81	108	100	90	-8
County Subtotals	5,241	6,207	5,044	5,602	5,177	4,627	4,479	5,234	5,774	5,325	5,234	6,095	5,726	5,367	-369
Central Region IAIU	43	54	35	60	32	38	35	47	50	56	47	53	55	47	2
Metro Region IAIU	36	35	35	41	41	22	23	34	54	33	25	45	44	36	-1
Northern Region IAIU	40	50	38	52	40	32	33	42	50	50	56	58	39	45	-19
Southern Region IAIU	46	59	46	48	56	56	27	50	69	50	53	81	77	55	-4
IAIU Subtotals	165	198	154	201	169	148	118	173	223	189	181	237	215	182	-22
¹ Unable to Determine	92	102	107	72	103	90	93	80	84	99	75	91	89	91	-2
Other Offices	4	0	0	0	3	2	2	3	0	1	1	2	2	2	0
Grand Total	5,502	6,507	5,305	5,875	5,452	4,867	4,692	5,490	6,081	5,614	5,491	6,425	6,032	5,641	-393

¹CPS Reports or CWS Referrals not assigned to an office through the Assignment Designee, but were assigned to an office for an assessment or investigation.



Table 5: Monthly Count of CPS Reports and CWS Referrals Assigned to CP&P Local Offices

County	Local Office	Type of Referral															Total
			Feb 2022	Mar 2022	Apr 2022	May 2022	Jun 2022	Jul 2022	Aug 2022	Sep 2022	Oct 2022	Nov 2022	Dec 2022	Jan 2023	Feb 2023		
ATLANTIC	Atlantic East	CPS	124	128	106	116	117	88	100	106	106	90	111	114	105	1,411	
		CWS	13	21	26	15	19	21	22	15	15	20	20	28	22	257	
		Total	137	149	132	131	136	109	122	121	121	110	131	142	127	1,668	
	Atlantic West	CPS	90	103	81	107	85	74	84	107	113	75	92	112	85	1,208	
		CWS	18	16	9	12	12	14	11	8	22	12	20	27	10	191	
		Total	108	119	90	119	97	88	95	115	135	87	112	139	95	1,399	
	County Totals	CPS	214	231	187	223	202	162	184	213	219	165	203	226	190	2,619	
		CWS	31	37	35	27	31	35	33	23	37	32	40	55	32	448	
		Total	245	268	222	250	233	197	217	236	256	197	243	281	222	3,067	
BERGEN	Bergen Central	CPS	152	169	119	119	142	108	82	117	137	145	126	143	149	1,708	
		CWS	17	17	18	13	7	14	27	17	19	21	25	20	21	236	
		Total	169	186	137	132	149	122	109	134	156	166	151	163	170	1,944	
	Bergen South	CPS	170	#####	188	179	176	160	142	156	176	159	168	214	194	15,671	
		CWS	15	22	23	16	24	23	25	25	24	25	25	30	34	311	
		Total	185	239	211	195	200	183	167	181	200	184	193	244	228	2,610	
	County Totals	CPS	322	386	307	298	318	268	224	273	313	304	294	357	343	4,007	
		CWS	32	39	41	29	31	37	52	42	43	46	50	50	55	547	
		Total	354	425	348	327	349	305	276	315	356	350	344	407	398	4,554	
BURLINGTON	Burlington East	CPS	121	162	103	134	133	115	96	130	136	133	117	146	126	1,652	
		CWS	11	17	17	15	21	16	22	26	19	20	25	32	22	263	
		Total	132	179	120	149	154	131	118	156	155	153	142	178	148	1,915	
	Burlington West	CPS	127	156	118	129	123	134	106	125	132	154	122	128	129	1,683	
		CWS	24	24	17	22	15	19	16	24	27	25	24	29	23	289	
		Total	151	180	135	151	138	153	122	149	159	179	146	157	152	1,972	
	County Totals	CPS	248	318	221	263	256	249	202	255	268	287	239	274	255	3,335	
		CWS	35	41	34	37	36	35	38	50	46	45	49	61	45	552	
		Total	283	359	255	300	292	284	240	305	314	332	288	335	300	3,887	
CAMDEN	Camden Central	CPS	104	111	95	112	99	95	112	124	136	97	97	116	107	1,405	
		CWS	16	7	9	17	21	13	20	22	20	15	21	18	19	218	
		Total	120	118	104	129	120	108	132	146	156	112	118	134	126	1,623	
	Camden East	CPS	95	106	107	94	98	84	68	111	93	121	96	110	102	1,285	
		CWS	11	20	15	16	20	8	9	17	20	16	15	12	27	206	
		Total	106	126	122	110	118	92	77	128	113	137	111	122	129	1,491	
	Camden North	CPS	103	135	98	85	71	73	86	110	109	87	101	89	98	1,245	
		CWS	16	22	22	21	12	18	14	12	16	32	20	19	25	249	
		Total	119	157	120	106	83	91	100	122	125	119	121	108	123	1,494	
	Camden South	CPS	95	117	101	122	88	81	92	102	93	86	92	103	92	1,264	
		CWS	9	24	11	7	13	13	14	13	12	18	19	19	11	183	
		Total	104	141	112	129	101	94	106	115	105	104	111	122	103	1,447	
	County Totals	CPS	397	469	401	413	356	333	358	447	431	391	386	418	399	5,199	
		CWS	52	73	57	61	66	52	57	64	68	81	75	68	82	856	
		Total	449	542	458	474	422	385	415	511	499	472	461	486	481	6,055	
CAPE MAY	Cape May	CPS	52	63	56	58	61	68	66	67	71	63	55	66	55	801	
		CWS	7	11	6	10	8	8	12	13	10	6	8	8	12	119	
		Total	59	74	62	68	69	76	78	80	81	69	63	74	67	920	
	County Totals	CPS	52	63	56	58	61	68	66	67	71	63	55	66	55	801	
		CWS	7	11	6	10	8	8	12	13	10	6	8	8	12	119	
		Total	59	74	62	68	69	76	78	80	81	69	63	74	67	920	
CUMBERLAND	Cumberland East	CPS	54	74	59	65	65	62	66	56	82	78	61	87	62	871	
		CWS	14	10	4	12	11	10	12	13	5	3	13	17	15	139	
		Total	68	84	63	77	76	72	78	69	87	81	74	104	77	1,010	
	Cumberland West	CPS	81	109	90	115	94	92	78	93	91	95	98	99	81	1,216	
		CWS	11	9	13	14	12	16	10	12	17	7	13	12	13	159	
		Total	92	118	103	129	106	108	88	105	108	102	111	111	94	1,375	
	County Totals	CPS	135	183	149	180	159	154	144	149	173	173	159	186	143	2,087	
		CWS	25	19	17	26	23	26	22	25	22	10	26	29	28	298	
		Total	160	202	166	206	182	180	166	174	195	183	185	215	171	2,385	

Data in this report is preliminary and may differ from any final report. This report is produced to ensure continuous quality improvement throughout DCF.



Table 5: Monthly Count of CPS Reports and CWS Referrals Assigned to CP&P Local Offices

County	Local Office	Type of Referral															Total
			Feb 2022	Mar 2022	Apr 2022	May 2022	Jun 2022	Jul 2022	Aug 2022	Sep 2022	Oct 2022	Nov 2022	Dec 2022	Jan 2023	Feb 2023		
ESSEX	Essex Central	CPS	69	78	89	83	77	73	79	85	89	70	73	69	71	1,005	
		CWS	13	10	14	10	9	8	9	10	12	19	16	13	16	159	
		Total	82	88	103	93	86	81	88	95	101	89	89	82	87	1,164	
	Essex North	CPS	88	115	82	91	90	71	60	86	92	85	104	101	118	1,183	
		CWS	10	6	7	11	6	13	5	8	16	13	15	18	17	145	
		Total	98	121	89	102	96	84	65	94	108	98	119	119	135	1,328	
	Essex South	CPS	89	123	82	106	86	77	83	66	90	87	93	99	84	1165	
		CWS	11	15	10	17	9	12	9	11	19	12	7	23	14	169	
		Total	100	138	92	123	95	89	92	77	109	99	100	122	98	1334	
	Newark Center City	CPS	71	90	75	88	67	65	73	74	93	77	69	77	71	990	
		CWS	8	9	9	9	10	9	10	8	14	13	12	13	13	137	
		Total	79	99	84	97	77	74	83	82	107	90	81	90	84	1127	
	Newark Northeast	CPS	91	94	83	72	63	61	74	79	77	82	68	90	89	1023	
		CWS	13	14	5	6	7	10	11	14	8	16	14	23	18	159	
		Total	104	108	88	78	70	71	85	93	85	98	82	113	107	1182	
	Newark South	CPS	79	88	65	76	80	68	75	73	74	76	68	93	81	996	
		CWS	8	5	11	12	13	10	9	14	6	12	8	17	20	145	
		Total	87	93	76	88	93	78	84	87	80	88	76	110	101	1141	
County Totals	CPS	487	588	476	516	463	415	444	463	515	477	475	529	514	6362		
	CWS	63	59	56	65	54	62	53	65	75	85	72	107	98	914		
	Total	550	647	532	581	517	477	497	528	590	562	547	636	612	7276		
GLOUCESTER	Gloucester East	CPS	84	107	79	88	81	90	78	74	75	100	97	102	77	1132	
		CWS	12	16	18	9	13	13	11	15	10	14	21	16	12	180	
		Total	96	123	97	97	94	103	89	89	85	114	118	118	89	1312	
	Gloucester West	CPS	91	123	103	109	98	101	85	110	114	114	99	125	123	1395	
		CWS	8	11	17	12	14	7	16	23	22	20	18	21	21	210	
		Total	99	134	120	121	112	108	101	133	136	134	117	146	144	1605	
	County Totals	CPS	175	230	182	197	179	191	163	184	189	214	196	227	200	2527	
		CWS	20	27	35	21	27	20	27	38	32	34	39	37	33	390	
		Total	195	257	217	218	206	211	190	222	221	248	235	264	233	2917	
HUDSON	Hudson Central	CPS	93	99	74	131	82	90	75	93	82	89	85	95	104	1192	
		CWS	18	17	11	10	14	10	9	11	15	20	19	13	19	186	
		Total	111	116	85	141	96	100	84	104	97	109	104	108	123	1378	
	Hudson North	CPS	98	108	65	74	70	69	48	86	88	69	80	86	81	1022	
		CWS	12	10	10	10	6	9	6	15	5	9	7	20	18	137	
		Total	110	118	75	84	76	78	54	101	93	78	87	106	99	1159	
	Hudson South	CPS	69	74	63	80	74	61	40	70	59	53	70	80	60	853	
		CWS	8	4	10	14	8	10	8	7	14	12	10	16	12	133	
		Total	77	78	73	94	82	71	48	77	73	65	80	96	72	986	
	Hudson West	CPS	87	90	84	84	66	67	47	65	80	76	82	80	78	986	
		CWS	7	13	7	6	7	7	9	9	9	14	17	18	16	139	
		Total	94	103	91	90	73	74	56	74	89	90	99	98	94	1125	
	County Totals	CPS	347	371	286	369	292	287	210	314	309	287	317	341	323	4053	
		CWS	45	44	38	40	35	36	32	42	43	55	53	67	65	595	
		Total	392	415	324	409	327	323	242	356	352	342	370	408	388	4648	
HUNTERDON	Hunterdon	CPS	30	50	39	34	50	25	27	49	50	40	35	46	36	511	
		CWS	3	5	7	4	6	4	5	3	4	9	4	7	5	66	
		Total	33	55	46	38	56	29	32	52	54	49	39	53	41	577	
	County Totals	CPS	30	50	39	34	50	25	27	49	50	40	35	46	36	511	
		Total	33	55	46	38	56	29	32	52	54	49	39	53	41	577	
MERCER	Mercer North	CPS	99	129	91	131	111	103	103	122	130	108	106	101	124	1458	
		CWS	16	14	18	12	15	19	14	10	11	23	17	15	27	211	
		Total	115	143	109	143	126	122	117	132	141	131	123	116	151	1669	
	Mercer South	CPS	107	106	100	96	93	104	99	90	129	98	96	106	113	1337	
		CWS	7	14	8	19	10	13	16	14	24	11	8	23	23	190	
		Total	114	120	108	115	103	117	115	104	153	109	104	129	136	1527	
	County Totals	CPS	206	235	191	227	204	207	202	212	259	206	202	207	237	2795	
Total		229	263	217	258	229	239	232	236	294	240	227	245	287	3196		

Data in this report is preliminary and may differ from any final report. This report is produced to ensure continuous quality improvement throughout DCF.

Table 5: Monthly Count of CPS Reports and CWS Referrals Assigned to CP&P Local Offices

County	Local Office	Type of Referral															Total
			Feb 2022	Mar 2022	Apr 2022	May 2022	Jun 2022	Jul 2022	Aug 2022	Sep 2022	Oct 2022	Nov 2022	Dec 2022	Jan 2023	Feb 2023		
MIDDLESEX	Middlesex Central	CPS	125	129	126	107	117	64	79	100	109	91	102	119	135	1403	
		CWS	19	18	12	14	12	7	2	17	21	15	11	20	15	183	
		Total	144	147	138	121	129	71	81	117	130	106	113	139	150	1586	
	Middlesex Coastal	CPS	138	173	124	137	127	106	116	137	139	153	139	167	130	1786	
		CWS	10	8	12	13	13	14	12	19	14	16	13	30	23	197	
		Total	148	181	136	150	140	120	128	156	153	169	152	197	153	1983	
	Middlesex West	CPS	153	171	100	147	121	83	89	114	135	131	120	136	134	1634	
		CWS	19	21	14	14	14	9	10	22	18	16	21	32	17	227	
		Total	172	192	114	161	135	92	99	136	153	147	141	168	151	1861	
	County Totals	CPS	416	473	350	391	365	253	284	351	383	375	361	422	399	4823	
		CWS	48	47	38	41	39	30	24	58	53	47	45	82	55	607	
		Total	464	520	388	432	404	283	308	409	436	422	406	504	454	5430	
MONMOUTH	Monmouth North	CPS	145	186	157	172	134	123	123	142	187	158	143	154	160	1984	
		CWS	12	14	16	22	5	13	23	11	15	24	17	26	27	225	
		Total	157	200	173	194	139	136	146	153	202	182	160	180	187	2209	
	Monmouth South	CPS	114	130	110	126	136	88	110	112	106	119	102	113	112	1478	
		CWS	17	12	14	12	11	12	10	24	9	16	15	30	22	204	
		Total	131	142	124	138	147	100	120	136	115	135	117	143	134	1682	
	County Totals	CPS	259	316	267	298	270	211	233	254	293	277	245	267	272	3462	
		CWS	29	26	30	34	16	25	33	35	24	40	32	56	49	429	
		Total	288	342	297	332	286	236	266	289	317	317	277	323	321	3891	
MORRIS	Morris East	CPS	101	89	72	85	85	67	70	82	99	88	83	92	78	1091	
		CWS	5	8	11	7	12	9	7	5	10	13	13	17	16	133	
		Total	106	97	83	92	97	76	77	87	109	101	96	109	94	1224	
	Morris West	CPS	78	101	82	112	99	82	84	95	102	68	89	111	100	1203	
		CWS	9	15	15	12	9	7	10	8	19	10	10	19	27	170	
		Total	87	116	97	124	108	89	94	103	121	78	99	130	127	1373	
	County Totals	CPS	179	190	154	197	184	149	154	177	201	156	172	203	178	2294	
		CWS	14	23	26	19	21	16	17	13	29	23	23	36	43	303	
		Total	193	213	180	216	205	165	171	190	230	179	195	239	221	2597	
OCEAN	Ocean North	CPS	151	158	171	172	172	161	139	163	190	161	165	156	177	2136	
		CWS	22	24	16	23	18	13	18	17	21	28	15	33	23	271	
		Total	173	182	187	195	190	174	157	180	211	189	180	189	200	2407	
	Ocean South	CPS	116	168	128	153	173	145	147	163	163	148	141	170	136	1951	
		CWS	16	20	17	24	12	21	16	13	17	15	20	23	14	228	
		Total	132	188	145	177	185	166	163	176	180	163	161	193	150	2179	
County Totals	CPS	267	326	299	325	345	306	286	326	353	309	306	326	313	4087		
	CWS	38	44	33	47	30	34	34	30	38	43	35	56	37	499		
	Total	305	370	332	372	375	340	320	356	391	352	341	382	350	4586		
PASSAIC	Passaic Central	CPS	165	187	140	177	164	127	115	157	161	140	148	165	156	2002	
		CWS	29	24	25	18	14	5	10	21	24	25	25	26	26	272	
		Total	194	211	165	195	178	132	125	178	185	165	173	191	182	2274	
	Passaic North	CPS	136	182	154	166	157	143	124	126	187	135	157	192	172	2031	
		CWS	24	22	28	24	15	20	15	19	24	26	18	37	31	303	
		Total	160	204	182	190	172	163	139	145	211	161	175	229	203	2334	
	County Totals	CPS	301	369	294	343	321	270	239	283	348	275	305	357	328	4033	
		CWS	53	46	53	42	29	25	25	40	48	51	43	63	57	575	
		Total	354	415	347	385	350	295	264	323	396	326	348	420	385	4608	
SALEM	Salem	CPS	59	70	48	72	46	51	62	61	53	56	67	68	60	773	
		CWS	15	14	7	9	7	11	5	9	7	8	6	15	5	118	
		Total	74	84	55	81	53	62	67	70	60	64	73	83	65	891	
	County Totals	CPS	59	70	48	72	46	51	62	61	53	56	67	68	60	773	
		CWS	15	14	7	9	7	11	5	9	7	8	6	15	5	118	
		Total	74	84	55	81	53	62	67	70	60	64	73	83	65	891	
SOMERSET	Somerset	CPS	132	149	103	132	119	102	81	116	152	124	123	150	146	1629	
		CWS	9	16	4	10	13	11	11	14	22	13	10	21	27	181	
		Total	141	165	107	142	132	113	92	130	174	137	133	171	173	1810	
	County Totals	CPS	132	149	103	132	119	102	81	116	152	124	123	150	146	1629	
		CWS	9	16	4	10	13	11	11	14	22	13	10	21	27	181	
Total	141	165	107	142	132	113	92	130	174	137	133	171	173	1810			



Table 5: Monthly Count of CPS Reports and CWS Referrals Assigned to CP&P Local Offices

County	Local Office	Type of Referral															Total
			Feb 2022	Mar 2022	Apr 2022	May 2022	Jun 2022	Jul 2022	Aug 2022	Sep 2022	Oct 2022	Nov 2022	Dec 2022	Jan 2023	Feb 2023		
SUSSEX	Sussex	CPS	89	98	84	85	77	65	64	78	100	89	75	97	70	1071	
		CWS	11	9	11	10	18	8	5	9	14	14	10	18	17	154	
		Total	100	107	95	95	95	73	69	87	114	103	85	115	87	1225	
	County Totals	CPS	89	98	84	85	77	65	64	78	100	89	75	97	70	1071	
		CWS	11	9	11	10	18	8	5	9	14	14	10	18	17	154	
		Total	100	107	95	95	95	73	69	87	114	103	85	115	87	1225	
UNION	Union Central	CPS	78	95	90	88	97	88	74	72	118	89	88	107	101	1185	
		CWS	8	16	4	15	10	10	9	8	11	12	13	19	20	155	
		Total	86	111	94	103	107	98	83	80	129	101	101	126	121	1340	
	Union East	CPS	75	104	98	96	88	90	78	69	95	80	66	95	104	1138	
		CWS	9	14	10	13	19	11	13	14	10	12	7	12	21	165	
		Total	84	118	108	109	107	101	91	83	105	92	73	107	125	1303	
	Union West	CPS	108	115	98	105	89	71	76	87	105	90	96	103	107	1250	
		CWS	12	19	17	15	7	11	9	15	14	18	23	10	17	187	
		Total	120	134	115	120	96	82	85	102	119	108	119	113	124	1437	
	County Totals	CPS	261	314	286	289	274	249	228	228	318	259	250	305	312	3573	
		CWS	29	49	31	43	36	32	31	37	35	42	43	41	58	507	
		Total	290	363	317	332	310	281	259	265	353	301	293	346	370	4080	
WARREN	Warren	CPS	77	103	71	77	78	70	68	88	86	72	69	93	92	1044	
		CWS	6	18	8	9	7	3	10	12	5	8	12	15	8	121	
		Total	83	121	79	86	85	73	78	100	91	80	81	108	100	1165	
	County Totals	CPS	77	103	71	77	78	70	68	88	86	72	69	93	92	1044	
		CWS	6	18	8	9	7	3	10	12	5	8	12	15	8	121	
		Total	83	121	79	86	85	73	78	100	91	80	81	108	100	1165	
County CPS Referral Total		CPS	4,653	5,532	4,451	4,987	4,619	4,085	3,923	4,588	5,084	4,599	4,534	5,165	4,865	61,085	
County CWS Referral Total		CWS	588	675	593	615	558	542	556	646	690	726	700	930	861	8,680	
County Referral Total		Total	5,241	6,207	5,044	5,602	5,177	4,627	4,479	5,234	5,774	5,325	5,234	6,095	5,726	69,765	
Central Region IAIU	CPS	43	54	35	60	32	38	35	47	50	56	47	53	55	605		
	CWS	0	0	0	0	0	0	0	0	0	0	0	0	0	0		
	Total	43	54	35	60	32	38	35	47	50	56	47	53	55	605		
Metro Region IAIU	CPS	36	35	35	41	41	22	23	34	54	33	25	45	44	468		
	CWS	0	0	0	0	0	0	0	0	0	0	0	0	0	0		
	Total	36	35	35	41	41	22	23	34	54	33	25	45	44	468		
Northern Region IAIU	CPS	40	50	38	52	40	32	33	42	50	50	56	58	39	580		
	CWS	0	0	0	0	0	0	0	0	0	0	0	0	0	0		
	Total	40	50	38	52	40	32	33	42	50	50	56	58	39	580		
Southern Region IAIU	CPS	46	59	46	48	56	56	27	50	69	50	53	81	77	718		
	CWS	0	0	0	0	0	0	0	0	0	0	0	0	0	0		
	Total	46	59	46	48	56	56	27	50	69	50	53	81	77	718		
IAIU CPS Subtotal		CPS	165	198	154	201	169	148	118	173	223	189	181	237	215	2,371	
IAIU CWS Subtotal		CWS	0	0	0	0	0	0	0	0	0	0	0	0	0	0	
IAIU Subtotal		Total	165	198	154	201	169	148	118	173	223	189	181	237	215	2,371	
County and IAIU CPS Subtotal		CPS	4,818	5,730	4,605	5,188	4,788	4,233	4,041	4,761	5,307	4,788	4,715	5,402	5,080	63,456	
County and IAIU CWS Subtotal		CWS	588	675	593	615	558	542	556	646	690	726	700	930	861	8,680	
Unable to Determine(1)		Total	92	102	107	72	103	90	93	80	84	99	75	91	89	1,177	
Other Offices		Total	4	0	0	0	3	2	2	3	0	1	1	2	2	20	
Grand Total		Total	5,502	6,507	5,305	5,875	5,452	4,867	4,692	5,490	6,081	5,614	5,491	6,425	6,032	73,333	

(1) CPS Reports or CWS Referrals not assigned to an office through the Assignment Designee, but were assigned to an office for an assessment or investigation.