



NEW JERSEY DEPARTMENT OF  
CHILDREN AND FAMILIES

## **Child Protection and Permanency**

### **Monthly Screening and Investigation Report March 2022**

Christine Norbut Beyer, MSW  
Commissioner



## Table of Contents

Table 1: NJ State Central Registry Activity: Monthly Child Abuse and Neglect Hotline Calls, Intakes and Assignments to Child Protection & Permanency (CP&P) Offices

---

Chart 1: CP&P Annual Trends in Child Protection Services (CPS) Reports and Child Welfare Services (CWS) Referrals

---

Table 2: Assignments to CP&P Offices: CPS Reports and CWS Referrals

---

Table 3: Source of CPS Reports and CWS Referrals

---

Table 4: Monthly Count of CPS Reports and CWS Referrals Assigned to Counties

---

Table 5: Monthly Count of CPS Reports and CWS Referrals Assigned to CP&P Local Offices

---

**Table 1: NJ State Central Registry Activity: Monthly Child Abuse and Neglect Hotline Calls, Intakes and Assignments to CP&P Offices<sup>1,2,7</sup>**

2021-2022	Hotline Call Activity				Intakes Recorded in NJ SPIRIT <sup>6,8</sup>														Assignments to CP&P Offices				
	Total Calls to SCR <sup>3</sup>	Abandon Calls <sup>4</sup>	Average Time to Answer (seconds)	Resulting NJS Intakes <sup>5</sup>	CPS Reports		CWS Referrals		No Action Required (NAR)		Related Information (RI)		Information & Referral (I&R)		Information Only (IO)		Unusual Incident (UIRS)		CPS Reports		CWS Referrals		Total
					n	%	n	%	n	%	n	%	n	%	n	%	n	%	n	%	n	%	
March 2021	12,731	666	75	13,372	4,657	34.8%	829	6.2%	261	2.0%	2,868	21.4%	2,796	20.9%	1,961	14.7%	0	0.0%	4,657	84.9%	830	15.1%	5,487
April 2021	11,772	680	94	12,287	4,398	35.8%	750	6.1%	187	1.5%	2,796	22.8%	2,287	18.6%	1,869	15.2%	0	0.0%	4,398	85.4%	750	14.6%	5,148
May 2021	12,496	686	87	13,132	4,870	37.1%	734	5.6%	219	1.7%	3,025	23.0%	2,523	19.2%	1,761	13.4%	0	0.0%	4,870	86.9%	736	13.1%	5,606
June 2021	11,893	895	117	12,269	4,412	36.0%	591	4.8%	188	1.5%	2,943	24.0%	2,430	19.8%	1,705	13.9%	0	0.0%	4,412	88.2%	592	11.8%	5,004
July 2021	10,578	638	127	10,996	3,914	35.6%	569	5.2%	142	1.3%	2,642	24.0%	2,079	18.9%	1,650	15.0%	0	0.0%	3,914	87.3%	570	12.7%	4,484
August 2021	10,365	508	78	10,897	3,866	35.5%	482	4.4%	172	1.6%	2,371	21.8%	2,301	21.1%	1,704	15.6%	1	0.0%	3,866	88.9%	482	11.1%	4,348
September 2021	12,259	591	91	12,780	4,559	35.7%	564	4.4%	148	1.2%	2,794	21.9%	2,894	22.6%	1,819	14.2%	2	0.0%	4,559	89.0%	564	11.0%	5,123
October 2021	14,262	1,183	152	14,500	5,213	36.0%	631	4.4%	200	1.4%	3,287	22.7%	3,277	22.6%	1,890	13.0%	2	0.0%	5,213	89.2%	630	10.8%	5,843
November 2021	13,077	1,619	262	12,689	4,689	37.0%	539	4.2%	165	1.3%	2,817	22.2%	2,865	22.6%	1,609	12.7%	5	0.0%	4,689	89.7%	541	10.3%	5,230
December 2021	12,921	1,426	222	12,594	4,601	36.5%	558	4.4%	157	1.2%	2,746	21.8%	2,858	22.7%	1,660	13.2%	14	0.1%	4,601	89.2%	557	10.8%	5,158
January 2022	11,733	942	163	11,798	4,274	36.2%	524	4.4%	116	1.0%	2,561	21.7%	2,641	22.4%	1,672	14.2%	10	0.1%	4,274	89.1%	523	10.9%	4,797
February 2022	13,523	1,838	304	12,923	4,867	37.7%	632	4.9%	168	1.3%	2,732	21.1%	2,990	23.1%	1,524	11.8%	10	0.1%	4,867	88.5%	635	11.5%	5,502
<b>March 2022</b>	<b>15,347</b>	<b>1,916</b>	<b>281</b>	<b>14,886</b>	<b>5,781</b>	<b>38.8%</b>	<b>727</b>	<b>4.9%</b>	<b>207</b>	<b>1.4%</b>	<b>2,946</b>	<b>19.8%</b>	<b>3,468</b>	<b>23.3%</b>	<b>1,750</b>	<b>11.8%</b>	<b>7</b>	<b>0.0%</b>	<b>5,780</b>	<b>88.8%</b>	<b>727</b>	<b>11.2%</b>	<b>6,507</b>
	<b>12,535</b>	<b>1,045</b>	<b>158</b>	<b>12,702</b>	<b>4,623</b>	<b>36.4%</b>	<b>625</b>	<b>4.9%</b>	<b>179</b>	<b>1.4%</b>	<b>2,810</b>	<b>22.1%</b>	<b>2,724</b>	<b>21.4%</b>	<b>1,736</b>	<b>13.7%</b>	<b>4</b>	<b>0.0%</b>	<b>4,623</b>	<b>88.1%</b>	<b>626</b>	<b>11.9%</b>	<b>5,249</b>
<b>Overall Total</b>	<b>162,957</b>	<b>13,588</b>		<b>165,123</b>	<b>60,101</b>		<b>8,130</b>		<b>2,330</b>		<b>36,528</b>		<b>35,409</b>		<b>22,574</b>		<b>51</b>		<b>60,100</b>	<b>88.1%</b>	<b>8,137</b>	<b>11.9%</b>	<b>68,237</b>

<sup>1</sup>Comes from three distinct sources: (1) the Automatic Call Distribution (ACD) phone system; which keeps a count of the number of calls and call routing; (2) Monthly NJSpirit Intakes; which record decision making on calls received by hotline screeners, and (3) NJSpirit extracts of assigned CWS Referrals and CPS Reports.

<sup>2</sup>The number of Intakes, CPS Reports, and CWS Referrals are based on an extract from NJSpirit.

Data extracted by the Office of Research, Evaluation, and Reporting on **April 08, 2022** includes all Intakes, CPS Reports, and CWS Referrals received from **March 01, 2022** through **March 31, 2022**.

<sup>3</sup>The number calls received through the ACD System that were directed to a screener from any call-in phone number.

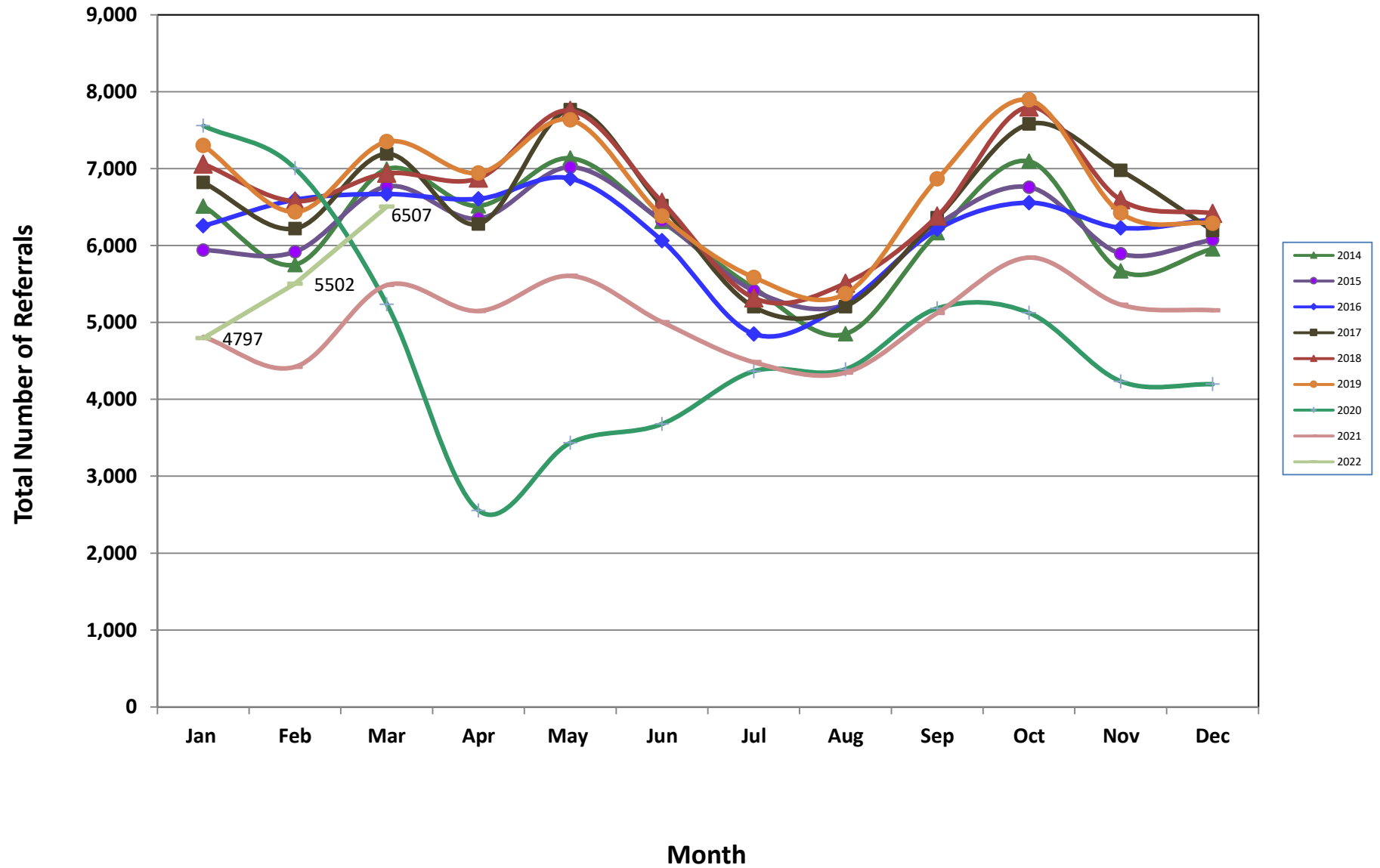
<sup>4</sup>The number of calls received through the ACD System that are abandoned either while waiting in queue or while ringing.

<sup>5</sup>The number of Intakes entered in NJSpirit from the number of calls received.

<sup>6</sup>The number of Intakes recorded in NJSpirit, by type of Intake. There is not a one-to-one relationship between an ACD call and an Intake; multiple calls to State Central Registry (SCR) may result in a single Intake, or one call may result in multiple Intakes.

<sup>7</sup>Intake: The process of documenting: a report of alleged abuse or neglect of a child (CPS); a request for services on behalf of a child, or a referral of a child for services (CWS); a call in which the caller provides additional or clarifying information about a current service case or active investigation (RI); informing a caller of, or referring a caller to, services available from other private or public sources (I&R); a call that requires no action by CP&P (NAR); or a response to a simple inquiry (IO).

### CP&P Annual Trends in CPS Reports and CWS Referrals



**Table 2: Assignments to CP&P Offices: CPS Reports and CWS Referrals<sup>1</sup>**

Intake Date <sup>3</sup>		CPS Reports <sup>2</sup>	CWS Referrals <sup>2</sup>	Total Assignments <sup>2</sup>
2016	Jan 2016	4,686	1,571	6,257
	Feb 2016	4,974	1,622	6,596
	<b>Mar 2016</b>	<b>5,000</b>	<b>1,669</b>	<b>6,669</b>
	Apr 2016	5,065	1,542	6,607
	May 2016	5,238	1,633	6,871
	Jun 2016	4,602	1,461	6,063
	Jul 2016	3,663	1,187	4,850
	Aug 2016	3,941	1,307	5,248
	Sep 2016	4,654	1,559	6,213
	Oct 2016	4,935	1,622	6,557
	Nov 2016	4,677	1,552	6,229
	Dec 2016	4,762	1,580	6,342
	<b>Total</b>	<b>56,197</b>	<b>18,305</b>	<b>74,502</b>
2017	Jan 2017	5,111	1,708	6,819
	Feb 2017	4,716	1,504	6,220
	<b>Mar 2017</b>	<b>5,349</b>	<b>1,843</b>	<b>7,192</b>
	Apr 2017	4,790	1,490	6,280
	May 2017	5,847	1,919	7,766
	Jun 2017	4,853	1,665	6,518
	Jul 2017	3,814	1,389	5,203
	Aug 2017	3,866	1,340	5,206
	Sep 2017	4,719	1,643	6,362
	Oct 2017	5,613	1,966	7,579
	Nov 2017	5,223	1,753	6,976
	Dec 2017	4,601	1,594	6,195
	<b>Total</b>	<b>58,502</b>	<b>19,814</b>	<b>78,316</b>
2018	Jan 2018	5,276	1,784	7,060
	Feb 2018	4,933	1,644	6,577
	<b>Mar 2018</b>	<b>5,212</b>	<b>1,727</b>	<b>6,939</b>
	Apr 2018	5,275	1,601	6,876
	May 2018	5,920	1,836	7,756
	Jun 2018	4,948	1,615	6,563
	Jul 2018	4,011	1,308	5,319
	Aug 2018	4,102	1,408	5,510
	Sep 2018	4,748	1,634	6,382
	Oct 2018	5,790	2,011	7,801
	Nov 2018	4,973	1,620	6,593
	Dec 2018	4,891	1,527	6,418
	<b>Total</b>	<b>60,079</b>	<b>19,715</b>	<b>79,794</b>

**Table 2: Assignments to CP&P Offices: CPS Reports and CWS Referrals<sup>1</sup>**

Intake Date <sup>3</sup>		CPS Reports <sup>2</sup>	CWS Referrals <sup>2</sup>	Total Assignments <sup>2</sup>
2019	Jan 2019	5,443	1,858	7,301
	Feb 2019	4,811	1,628	6,439
	<b>Mar 2019</b>	<b>5,677</b>	<b>1,824</b>	<b>7,501</b>
	Apr 2019	5,313	1,630	6,943
	May 2019	5,853	1,781	7,634
	Jun 2019	4,874	1,509	6,383
	Jul 2019	4,277	1,309	5,586
	Aug 2019	4,068	1,306	5,374
	Sep 2019	5,315	1,551	6,866
	Oct 2019	5,968	1,926	7,894
	Nov 2019	4,991	1,432	6,423
	Dec 2019	4,855	1,434	6,289
	<b>Total</b>	<b>61,445</b>	<b>19,188</b>	<b>80,633</b>
2020	Jan 2020	5,715	1,842	7,557
	Feb 2020	5,380	1,624	7,004
	<b>Mar 2020</b>	<b>4,172</b>	<b>1,065</b>	<b>5,237</b>
	Apr 2020	2,149	407	2,556
	May 2020	2,897	537	3,434
	Jun 2020	3,045	636	3,681
	Jul 2020	3,628	738	4,366
	Aug 2020	3,569	822	4,391
	Sep 2020	4,153	1,030	5,183
	Oct 2020	4,257	868	5,125
	Nov 2020	3,564	670	4,234
	Dec 2020	3,517	681	4,198
	<b>Total</b>	<b>46,046</b>	<b>10,920</b>	<b>56,966</b>
2021	Jan 2021	4,018	794	4,812
	Feb 2021	3,767	655	4,422
	<b>Mar 2021</b>	<b>4,657</b>	<b>830</b>	<b>5,487</b>
	Apr 2021	4,398	750	5,148
	May 2021	4,870	736	5,606
	Jun 2021	4,412	592	5,004
	Jul 2021	3,914	570	4,484
	Aug 2021	3,866	482	4,348
	Sep 2021	4,559	564	5,123
	Oct 2021	5,213	630	5,843
	Nov 2021	4,689	541	5,230
	Dec 2021	4,601	557	5,158
	<b>Total</b>	<b>52,964</b>	<b>7,701</b>	<b>60,665</b>
2022	Jan 2022	4,274	523	4,797
	Feb 2022	4,867	635	5,502
	<b>Mar 2022</b>	<b>5,780</b>	<b>727</b>	<b>6,507</b>
	<b>Total</b>	<b>14,921</b>	<b>1,885</b>	<b>16,806</b>
<b>Grand Total</b>		<b>335,233</b>	<b>95,643</b>	<b>430,876</b>

**Table 3: Source of CPS Reports and CWS Referrals**

	Source	Mar 2021	Apr 2021	May 2021	Jun 2021	Jul 2021	Aug 2021	Sep 2021	Oct 2021	Nov 2021	Dec 2021	Jan 2022	Feb 2022	Mar 2022		13 Month Total	
CPS Reports and CWS Referrals	School Staff	989	759	913	531	145	83	863	1,450	1,303	1,252	983	1,549	1,998	31%	12,818	19%
	Healthcare Provider	930	897	917	819	839	789	824	780	746	706	746	750	895	14%	10,638	16%
	Law Enforcement	1,311	1,329	1,542	1,466	1,442	1,384	1,397	1,446	1,340	1,341	1,238	1,234	1,478	23%	17,948	26%
	Government Agency	323	309	272	221	248	265	266	222	205	209	212	253	261	4%	3,266	5%
	Parent	392	409	387	396	392	404	347	393	377	378	347	349	380	6%	4,951	7%
	Relative/Friend/Neighbor	332	338	355	382	362	363	372	350	289	342	337	275	298	5%	4,395	6%
	Anonymous	499	450	487	476	387	401	444	506	364	367	366	461	471	7%	5,679	8%
	CP&P	96	89	89	76	58	45	60	73	45	49	54	56	75	1%	865	1%
	Court/Legal	127	102	111	119	125	88	120	126	89	89	100	108	144	2%	1,448	2%
	Community Group/Individual	182	159	175	176	149	159	137	175	169	144	158	183	198	3%	2,164	3%
	Facility Staff (incl Correctional Facility)	52	64	67	66	65	69	51	55	47	53	54	56	55	1%	754	1%
	Child (Self)	35	37	33	22	26	49	41	42	28	30	29	29	25	0%	426	1%
	Other	204	197	245	245	226	236	189	214	217	182	160	183	209	3%	2,707	4%
	Daycare/Babysitter	15	9	13	9	20	13	12	11	11	16	13	16	20	0%	178	0%
<b>Total</b>		<b>5,487</b>	<b>5,148</b>	<b>5,606</b>	<b>5,004</b>	<b>4,484</b>	<b>4,348</b>	<b>5,123</b>	<b>5,843</b>	<b>5,230</b>	<b>5,158</b>	<b>4,797</b>	<b>5,502</b>	<b>6,507</b>		<b>68,237</b>	

**Table 4: Monthly Count of CPS Reports and CWS Referrals Assigned to Counties**

County														Average Number of Assignments Last 13 Months	Feb 22 to Mar 22 Numerical Difference
	Mar 2021	Apr 2021	May 2021	Jun 2021	Jul 2021	Aug 2021	Sep 2021	Oct 2021	Nov 2021	Dec 2021	Jan 2022	Feb 2022	Mar 2022		
Atlantic	237	224	265	241	197	182	215	255	234	215	189	245	268	228	23
Bergen	323	314	343	273	255	249	325	350	345	360	290	354	425	324	71
Burlington	297	269	307	286	238	223	263	280	264	270	264	283	359	277	76
Camden	497	459	456	403	381	371	466	511	407	419	404	449	542	443	93
Cape May	87	68	81	56	81	72	70	70	66	70	62	59	74	70	15
Cumberland	203	190	173	165	153	140	180	196	167	190	149	160	202	174	42
Essex	530	441	520	501	457	442	484	565	535	489	456	550	647	509	97
Gloucester	239	237	219	228	205	207	208	221	215	204	216	195	257	219	62
Hudson	305	313	341	319	255	287	303	371	349	321	341	392	415	332	23
Hunterdon	41	47	47	34	37	33	39	52	44	44	40	33	55	42	22
Mercer	221	213	264	230	200	185	222	245	218	230	189	229	263	224	34
Middlesex	382	364	428	349	299	317	385	472	355	408	356	464	520	392	56
Monmouth	304	294	296	262	249	256	250	331	294	294	260	288	342	286	54
Morris	198	168	162	190	141	137	173	185	189	176	193	193	213	178	20
Ocean	394	389	396	360	290	310	337	382	341	333	304	305	370	347	65
Passaic	310	326	346	291	285	245	313	402	350	330	274	354	415	326	61
Salem	83	76	76	64	61	48	75	78	56	57	65	74	84	69	10
Somerset	130	139	153	130	108	97	131	148	130	111	112	141	165	130	24
Sussex	103	95	78	70	62	67	90	99	85	72	84	100	107	86	7
Union	271	260	321	266	240	226	256	293	277	277	257	290	363	277	73
Warren	102	73	104	86	87	55	99	68	93	67	86	83	121	86	38
<b>County Subtotals</b>	<b>5,257</b>	<b>4,959</b>	<b>5,376</b>	<b>4,804</b>	<b>4,281</b>	<b>4,149</b>	<b>4,884</b>	<b>5,574</b>	<b>5,014</b>	<b>4,937</b>	<b>4,591</b>	<b>5,241</b>	<b>6,207</b>	<b>5,021</b>	<b>966</b>
Central Region IAIU	30	20	41	22	35	25	42	53	31	37	32	43	54	36	11
Metro Region IAIU	22	14	18	17	11	22	36	29	26	21	27	36	35	24	-1
Northern Region IAIU	23	20	28	18	23	19	27	39	44	42	28	40	50	31	10
Southern Region IAIU	46	35	48	33	42	42	51	41	33	42	35	46	59	43	13
<b>IAIU Subtotals</b>	<b>121</b>	<b>89</b>	<b>135</b>	<b>90</b>	<b>111</b>	<b>108</b>	<b>156</b>	<b>162</b>	<b>134</b>	<b>142</b>	<b>122</b>	<b>165</b>	<b>198</b>	<b>133</b>	<b>33</b>
<sup>1</sup> Unable to Determine	108	98	94	108	89	91	83	107	82	78	84	92	102	94	10
Other Offices	1	2	1	2	3	0	0	0	0	1	0	4	0	1	-4
<b>Grand Total</b>	<b>5,487</b>	<b>5,148</b>	<b>5,606</b>	<b>5,004</b>	<b>4,484</b>	<b>4,348</b>	<b>5,123</b>	<b>5,843</b>	<b>5,230</b>	<b>5,158</b>	<b>4,797</b>	<b>5,502</b>	<b>6,507</b>	<b>5,249</b>	<b>1,005</b>

<sup>1</sup>CPS Reports or CWS Referrals not assigned to an office through the Assignment Designee, but were assigned to an office for an assessment or investigation.





**Table 5: Monthly Count of CPS Reports and CWS Referrals Assigned to CP&P Local Offices**

County	Local Office	Type of Referral	Mar 2021	Apr 2021	May 2021	Jun 2021	Jul 2021	Aug 2021	Sep 2021	Oct 2021	Nov 2021	Dec 2021	Jan 2022	Feb 2022	Mar 2022	Total
ATLANTIC	Atlantic East	CPS	105	105	128	130	95	97	106	126	118	104	114	124	128	1,480
		CWS	15	21	22	14	12	17	10	13	12	14	9	13	21	193
		<b>Total</b>	<b>120</b>	<b>126</b>	<b>150</b>	<b>144</b>	<b>107</b>	<b>114</b>	<b>116</b>	<b>139</b>	<b>130</b>	<b>118</b>	<b>123</b>	<b>137</b>	<b>149</b>	<b>1,673</b>
	Atlantic West	CPS	100	87	94	83	83	60	82	104	90	85	58	90	103	1,119
		CWS	17	11	21	14	7	8	17	12	14	12	8	18	16	175
		<b>Total</b>	<b>117</b>	<b>98</b>	<b>115</b>	<b>97</b>	<b>90</b>	<b>68</b>	<b>99</b>	<b>116</b>	<b>104</b>	<b>97</b>	<b>66</b>	<b>108</b>	<b>119</b>	<b>1,294</b>
	County Totals	CPS	205	192	222	213	178	157	188	230	208	189	172	214	231	2,599
		CWS	32	32	43	28	19	25	27	25	26	26	17	31	37	368
		<b>Total</b>	<b>237</b>	<b>224</b>	<b>265</b>	<b>241</b>	<b>197</b>	<b>182</b>	<b>215</b>	<b>255</b>	<b>234</b>	<b>215</b>	<b>189</b>	<b>245</b>	<b>268</b>	<b>2,967</b>
BERGEN	Bergen Central	CPS	123	111	122	89	85	85	132	139	133	127	111	152	169	1,578
		CWS	18	17	12	15	10	6	13	19	18	11	13	17	17	186
		<b>Total</b>	<b>141</b>	<b>128</b>	<b>134</b>	<b>104</b>	<b>95</b>	<b>91</b>	<b>145</b>	<b>158</b>	<b>151</b>	<b>138</b>	<b>124</b>	<b>169</b>	<b>186</b>	<b>1,764</b>
	Bergen South	CPS	157	161	191	157	139	147	157	177	174	197	148	170	217	2,192
		CWS	25	25	18	12	21	11	23	15	20	25	18	15	22	250
		<b>Total</b>	<b>182</b>	<b>186</b>	<b>209</b>	<b>169</b>	<b>160</b>	<b>158</b>	<b>180</b>	<b>192</b>	<b>194</b>	<b>222</b>	<b>166</b>	<b>185</b>	<b>239</b>	<b>2,442</b>
	County Totals	CPS	280	272	313	246	224	232	289	316	307	324	259	322	386	3,770
		CWS	43	42	30	27	31	17	36	34	38	36	31	32	39	436
		<b>Total</b>	<b>323</b>	<b>314</b>	<b>343</b>	<b>273</b>	<b>255</b>	<b>249</b>	<b>325</b>	<b>350</b>	<b>345</b>	<b>360</b>	<b>290</b>	<b>354</b>	<b>425</b>	<b>4,206</b>
BURLINGTON	Burlington East	CPS	133	121	128	129	91	91	103	137	115	111	119	121	162	1,561
		CWS	18	27	21	21	20	10	17	11	18	16	16	11	17	223
		<b>Total</b>	<b>151</b>	<b>148</b>	<b>149</b>	<b>150</b>	<b>111</b>	<b>101</b>	<b>120</b>	<b>148</b>	<b>133</b>	<b>127</b>	<b>135</b>	<b>132</b>	<b>179</b>	<b>1,784</b>
	Burlington West	CPS	122	98	135	117	105	100	125	115	115	128	119	127	156	1,562
		CWS	24	23	23	19	22	22	18	17	16	15	10	24	24	257
		<b>Total</b>	<b>146</b>	<b>121</b>	<b>158</b>	<b>136</b>	<b>127</b>	<b>122</b>	<b>143</b>	<b>132</b>	<b>131</b>	<b>143</b>	<b>129</b>	<b>151</b>	<b>180</b>	<b>1,819</b>
	County Totals	CPS	255	219	263	246	196	191	228	252	230	239	238	248	318	3,123
		CWS	42	50	44	40	42	32	35	28	34	31	26	35	41	480
		<b>Total</b>	<b>297</b>	<b>269</b>	<b>307</b>	<b>286</b>	<b>238</b>	<b>223</b>	<b>263</b>	<b>280</b>	<b>264</b>	<b>270</b>	<b>264</b>	<b>283</b>	<b>359</b>	<b>3,603</b>
CAMDEN	Camden Central	CPS	115	91	105	88	86	88	105	117	93	91	91	104	111	1,285
		CWS	22	12	17	13	12	16	15	17	15	14	16	16	7	192
		<b>Total</b>	<b>137</b>	<b>103</b>	<b>122</b>	<b>101</b>	<b>98</b>	<b>104</b>	<b>120</b>	<b>134</b>	<b>108</b>	<b>105</b>	<b>107</b>	<b>120</b>	<b>118</b>	<b>1,477</b>
	Camden East	CPS	118	112	104	84	81	84	101	128	94	81	84	95	106	1,272
		CWS	16	18	10	13	13	16	10	16	14	20	22	11	20	199
		<b>Total</b>	<b>134</b>	<b>130</b>	<b>114</b>	<b>97</b>	<b>94</b>	<b>100</b>	<b>111</b>	<b>144</b>	<b>108</b>	<b>101</b>	<b>106</b>	<b>106</b>	<b>126</b>	<b>1,471</b>
	Camden North	CPS	85	93	97	92	79	67	97	102	91	87	89	103	135	1,217
		CWS	13	15	17	11	9	13	17	15	5	14	9	16	22	176
		<b>Total</b>	<b>98</b>	<b>108</b>	<b>114</b>	<b>103</b>	<b>88</b>	<b>80</b>	<b>114</b>	<b>117</b>	<b>96</b>	<b>101</b>	<b>98</b>	<b>119</b>	<b>157</b>	<b>1,393</b>
	Camden South	CPS	108	102	91	92	88	75	108	96	85	94	83	95	117	1,234
		CWS	20	16	15	10	13	12	13	20	10	18	10	9	24	190
		<b>Total</b>	<b>128</b>	<b>118</b>	<b>106</b>	<b>102</b>	<b>101</b>	<b>87</b>	<b>121</b>	<b>116</b>	<b>95</b>	<b>112</b>	<b>93</b>	<b>104</b>	<b>141</b>	<b>1,424</b>
	County Totals	CPS	426	398	397	356	334	314	411	443	363	353	347	397	469	5,008
		CWS	71	61	59	47	47	57	55	68	44	66	57	52	73	757
		<b>Total</b>	<b>497</b>	<b>459</b>	<b>456</b>	<b>403</b>	<b>381</b>	<b>371</b>	<b>466</b>	<b>511</b>	<b>407</b>	<b>419</b>	<b>404</b>	<b>449</b>	<b>542</b>	<b>5,765</b>
CAPE MAY	Cape May	CPS	77	60	70	51	63	64	61	61	56	61	56	52	63	795
		CWS	10	8	11	5	18	8	9	9	10	9	6	7	11	121
		<b>Total</b>	<b>87</b>	<b>68</b>	<b>81</b>	<b>56</b>	<b>81</b>	<b>72</b>	<b>70</b>	<b>70</b>	<b>66</b>	<b>70</b>	<b>62</b>	<b>59</b>	<b>74</b>	<b>916</b>
	County Totals	CPS	77	60	70	51	63	64	61	61	56	61	56	52	63	795
		CWS	10	8	11	5	18	8	9	9	10	9	6	7	11	121
<b>Total</b>	<b>87</b>	<b>68</b>	<b>81</b>	<b>56</b>	<b>81</b>	<b>72</b>	<b>70</b>	<b>70</b>	<b>66</b>	<b>70</b>	<b>62</b>	<b>59</b>	<b>74</b>	<b>916</b>		
CUMBERLAND	Cumberland East	CPS	75	55	54	66	68	58	77	75	59	71	56	54	74	842
		CWS	11	11	11	11	4	4	8	11	6	8	11	14	10	120
		<b>Total</b>	<b>86</b>	<b>66</b>	<b>65</b>	<b>77</b>	<b>72</b>	<b>62</b>	<b>85</b>	<b>86</b>	<b>65</b>	<b>79</b>	<b>67</b>	<b>68</b>	<b>84</b>	<b>962</b>
	Cumberland West	CPS	101	110	91	74	73	71	89	102	94	96	67	81	109	1,158
		CWS	16	14	17	14	8	7	6	8	8	15	15	11	9	148
		<b>Total</b>	<b>117</b>	<b>124</b>	<b>108</b>	<b>88</b>	<b>81</b>	<b>78</b>	<b>95</b>	<b>110</b>	<b>102</b>	<b>111</b>	<b>82</b>	<b>92</b>	<b>118</b>	<b>1,306</b>
	County Totals	CPS	176	165	145	140	141	129	166	177	153	167	123	135	183	2,000
CWS		27	25	28	25	12	11	14	19	14	23	26	25	19	268	
<b>Total</b>		<b>203</b>	<b>190</b>	<b>173</b>	<b>165</b>	<b>153</b>	<b>140</b>	<b>180</b>	<b>196</b>	<b>167</b>	<b>190</b>	<b>149</b>	<b>160</b>	<b>202</b>	<b>2,268</b>	

Data in this report is preliminary and may differ from any final report. This report is produced to ensure continuous quality improvement throughout DCF.



**Table 5: Monthly Count of CPS Reports and CWS Referrals Assigned to CP&P Local Offices**

County	Local Office	Type of Referral	Mar 2021	Apr 2021	May 2021	Jun 2021	Jul 2021	Aug 2021	Sep 2021	Oct 2021	Nov 2021	Dec 2021	Jan 2022	Feb 2022	Mar 2022	Total
ESSEX	Essex Central	CPS	68	63	62	63	77	59	75	88	78	68	57	69	78	905
		CWS	11	14	9	9	15	12	6	14	7	12	6	13	10	138
		<b>Total</b>	<b>79</b>	<b>77</b>	<b>71</b>	<b>72</b>	<b>92</b>	<b>71</b>	<b>81</b>	<b>102</b>	<b>85</b>	<b>80</b>	<b>63</b>	<b>82</b>	<b>88</b>	<b>1,043</b>
	Essex North	CPS	81	66	79	71	68	49	50	78	85	109	81	88	115	1,020
		CWS	20	15	15	7	7	1	3	9	12	8	13	10	6	126
		<b>Total</b>	<b>101</b>	<b>81</b>	<b>94</b>	<b>78</b>	<b>75</b>	<b>50</b>	<b>53</b>	<b>87</b>	<b>97</b>	<b>117</b>	<b>94</b>	<b>98</b>	<b>121</b>	<b>1,146</b>
	Essex South	CPS	70	64	81	86	61	74	76	104	84	62	65	89	123	1039
		CWS	23	13	12	13	9	9	13	14	11	15	8	11	15	166
		<b>Total</b>	<b>93</b>	<b>77</b>	<b>93</b>	<b>99</b>	<b>70</b>	<b>83</b>	<b>89</b>	<b>118</b>	<b>95</b>	<b>77</b>	<b>73</b>	<b>100</b>	<b>138</b>	<b>1205</b>
	Newark Center City	CPS	63	77	74	67	67	64	75	86	64	75	79	71	90	952
		CWS	15	9	5	14	3	11	12	6	11	13	2	8	9	118
		<b>Total</b>	<b>78</b>	<b>86</b>	<b>79</b>	<b>81</b>	<b>70</b>	<b>75</b>	<b>87</b>	<b>92</b>	<b>75</b>	<b>88</b>	<b>81</b>	<b>79</b>	<b>99</b>	<b>1070</b>
	Newark Northeast	CPS	66	54	83	70	61	61	71	75	80	50	68	91	94	924
		CWS	13	11	10	11	18	7	9	14	6	5	8	13	14	139
		<b>Total</b>	<b>79</b>	<b>65</b>	<b>93</b>	<b>81</b>	<b>79</b>	<b>68</b>	<b>80</b>	<b>89</b>	<b>86</b>	<b>55</b>	<b>76</b>	<b>104</b>	<b>108</b>	<b>1063</b>
	Newark South	CPS	82	45	83	86	58	81	83	72	85	65	55	79	88	962
		CWS	18	10	7	4	13	14	11	5	12	7	14	8	5	128
		<b>Total</b>	<b>100</b>	<b>55</b>	<b>90</b>	<b>90</b>	<b>71</b>	<b>95</b>	<b>94</b>	<b>77</b>	<b>97</b>	<b>72</b>	<b>69</b>	<b>87</b>	<b>93</b>	<b>1090</b>
	County Totals	CPS	430	369	462	443	392	388	430	503	476	429	405	487	588	5802
		CWS	100	72	58	58	65	54	54	62	59	60	51	63	59	815
		<b>Total</b>	<b>530</b>	<b>441</b>	<b>520</b>	<b>501</b>	<b>457</b>	<b>442</b>	<b>484</b>	<b>565</b>	<b>535</b>	<b>489</b>	<b>456</b>	<b>550</b>	<b>647</b>	<b>6617</b>
GLOUCESTER	Gloucester East	CPS	93	91	94	85	85	76	80	97	88	90	86	84	107	1156
		CWS	19	17	16	13	15	8	19	13	13	7	14	12	16	182
		<b>Total</b>	<b>112</b>	<b>108</b>	<b>110</b>	<b>98</b>	<b>100</b>	<b>84</b>	<b>99</b>	<b>110</b>	<b>101</b>	<b>97</b>	<b>100</b>	<b>96</b>	<b>123</b>	<b>1338</b>
	Gloucester West	CPS	116	114	96	109	90	113	97	93	95	92	103	91	123	1332
		CWS	11	15	13	21	15	10	12	18	19	15	13	8	11	181
		<b>Total</b>	<b>127</b>	<b>129</b>	<b>109</b>	<b>130</b>	<b>105</b>	<b>123</b>	<b>109</b>	<b>111</b>	<b>114</b>	<b>107</b>	<b>116</b>	<b>99</b>	<b>134</b>	<b>1513</b>
	County Totals	CPS	209	205	190	194	175	189	177	190	183	182	189	175	230	2488
CWS		30	32	29	34	30	18	31	32	22	22	27	20	27	363	
<b>Total</b>		<b>239</b>	<b>237</b>	<b>219</b>	<b>228</b>	<b>205</b>	<b>207</b>	<b>208</b>	<b>221</b>	<b>215</b>	<b>204</b>	<b>216</b>	<b>195</b>	<b>257</b>	<b>2851</b>	
HUDSON	Hudson Central	CPS	98	78	96	78	63	104	78	111	80	70	78	93	99	1126
		CWS	32	16	16	20	11	8	15	13	18	15	9	18	17	208
		<b>Total</b>	<b>130</b>	<b>94</b>	<b>112</b>	<b>98</b>	<b>74</b>	<b>112</b>	<b>93</b>	<b>124</b>	<b>98</b>	<b>85</b>	<b>87</b>	<b>111</b>	<b>116</b>	<b>1334</b>
	Hudson North	CPS	55	59	72	57	60	60	59	68	80	81	90	98	108	947
		CWS	11	14	14	7	11	12	11	9	6	8	5	12	10	130
		<b>Total</b>	<b>66</b>	<b>73</b>	<b>86</b>	<b>64</b>	<b>71</b>	<b>72</b>	<b>70</b>	<b>77</b>	<b>86</b>	<b>89</b>	<b>95</b>	<b>110</b>	<b>118</b>	<b>1077</b>
	Hudson South	CPS	34	50	50	74	37	41	51	54	68	59	62	69	74	723
		CWS	9	14	12	8	7	3	9	12	4	5	12	8	4	107
		<b>Total</b>	<b>43</b>	<b>64</b>	<b>62</b>	<b>82</b>	<b>44</b>	<b>44</b>	<b>60</b>	<b>66</b>	<b>72</b>	<b>64</b>	<b>74</b>	<b>77</b>	<b>78</b>	<b>830</b>
	Hudson West	CPS	58	69	68	65	61	52	72	93	87	77	76	87	90	955
		CWS	8	13	13	10	5	7	8	11	6	6	9	7	13	116
		<b>Total</b>	<b>66</b>	<b>82</b>	<b>81</b>	<b>75</b>	<b>66</b>	<b>59</b>	<b>80</b>	<b>104</b>	<b>93</b>	<b>83</b>	<b>85</b>	<b>94</b>	<b>103</b>	<b>1071</b>
	County Totals	CPS	245	256	286	274	221	257	260	326	315	287	306	347	371	3751
		CWS	60	57	55	45	34	30	43	45	34	34	35	45	44	561
<b>Total</b>		<b>305</b>	<b>313</b>	<b>341</b>	<b>319</b>	<b>255</b>	<b>287</b>	<b>303</b>	<b>371</b>	<b>349</b>	<b>321</b>	<b>341</b>	<b>392</b>	<b>415</b>	<b>4312</b>	
HUNTERDON	Hunterdon	CPS	34	38	38	29	35	32	35	49	42	42	36	30	50	490
		CWS	7	9	9	5	2	1	4	3	2	2	4	3	5	56
		<b>Total</b>	<b>41</b>	<b>47</b>	<b>47</b>	<b>34</b>	<b>37</b>	<b>33</b>	<b>39</b>	<b>52</b>	<b>44</b>	<b>44</b>	<b>40</b>	<b>33</b>	<b>55</b>	<b>546</b>
	County Totals	CPS	34	38	38	29	35	32	35	49	42	42	36	30	50	490
		CWS	7	9	9	5	2	1	4	3	2	2	4	3	5	56
<b>Total</b>	<b>41</b>	<b>47</b>	<b>47</b>	<b>34</b>	<b>37</b>	<b>33</b>	<b>39</b>	<b>52</b>	<b>44</b>	<b>44</b>	<b>40</b>	<b>33</b>	<b>55</b>	<b>546</b>		
MERCER	Mercer North	CPS	93	108	128	113	92	90	103	85	97	95	87	99	129	1319
		CWS	9	8	11	17	20	12	13	18	12	12	13	16	14	175
		<b>Total</b>	<b>102</b>	<b>116</b>	<b>139</b>	<b>130</b>	<b>112</b>	<b>102</b>	<b>116</b>	<b>103</b>	<b>109</b>	<b>107</b>	<b>100</b>	<b>115</b>	<b>143</b>	<b>1494</b>
	Mercer South	CPS	99	81	109	88	74	76	91	128	101	108	76	107	106	1244
		CWS	20	16	16	12	14	7	15	14	8	15	13	7	14	171
		<b>Total</b>	<b>119</b>	<b>97</b>	<b>125</b>	<b>100</b>	<b>88</b>	<b>83</b>	<b>106</b>	<b>142</b>	<b>109</b>	<b>123</b>	<b>89</b>	<b>114</b>	<b>120</b>	<b>1415</b>
	County Totals	CPS	192	189	237	201	166	166	194	213	198	203	163	206	235	2563
CWS		29	24	27	29	34	19	28	32	20	27	26	23	28	346	
<b>Total</b>		<b>221</b>	<b>213</b>	<b>264</b>	<b>230</b>	<b>200</b>	<b>185</b>	<b>222</b>	<b>245</b>	<b>218</b>	<b>230</b>	<b>189</b>	<b>229</b>	<b>263</b>	<b>2909</b>	

Data in this report is preliminary and may differ from any final report. This report is produced to ensure continuous quality improvement throughout DCF.



**Table 5: Monthly Count of CPS Reports and CWS Referrals Assigned to CP&P Local Offices**

County	Local Office	Type of Referral	Mar 2021	Apr 2021	May 2021	Jun 2021	Jul 2021	Aug 2021	Sep 2021	Oct 2021	Nov 2021	Dec 2021	Jan 2022	Feb 2022	Mar 2022	Total
MIDDLESEX	Middlesex Central	CPS	98	110	99	103	81	71	91	118	101	114	114	125	129	1354
		CWS	13	20	11	15	10	7	12	17	9	10	5	19	18	166
		<b>Total</b>	<b>111</b>	<b>130</b>	<b>110</b>	<b>118</b>	<b>91</b>	<b>78</b>	<b>103</b>	<b>135</b>	<b>110</b>	<b>124</b>	<b>119</b>	<b>144</b>	<b>147</b>	<b>1520</b>
	Middlesex Coastal	CPS	121	96	131	102	93	109	132	149	120	120	113	138	173	1597
		CWS	21	16	20	11	9	14	9	12	9	12	6	10	8	157
		<b>Total</b>	<b>142</b>	<b>112</b>	<b>151</b>	<b>113</b>	<b>102</b>	<b>123</b>	<b>141</b>	<b>161</b>	<b>129</b>	<b>132</b>	<b>119</b>	<b>148</b>	<b>181</b>	<b>1754</b>
	Middlesex West	CPS	107	104	142	104	95	106	127	162	106	146	109	153	171	1632
		CWS	22	18	25	14	11	10	14	14	6	9	19	21	193	
		<b>Total</b>	<b>129</b>	<b>122</b>	<b>167</b>	<b>118</b>	<b>106</b>	<b>116</b>	<b>141</b>	<b>176</b>	<b>116</b>	<b>152</b>	<b>118</b>	<b>172</b>	<b>192</b>	<b>1825</b>
	County Totals	CPS	326	310	372	309	269	286	350	429	327	380	336	416	473	4583
		CWS	56	54	56	40	30	31	35	43	28	28	20	48	47	516
		<b>Total</b>	<b>382</b>	<b>364</b>	<b>428</b>	<b>349</b>	<b>299</b>	<b>317</b>	<b>385</b>	<b>472</b>	<b>355</b>	<b>408</b>	<b>356</b>	<b>464</b>	<b>520</b>	<b>5099</b>
MONMOUTH	Monmouth North	CPS	154	135	146	124	121	125	123	186	132	158	132	145	186	1867
		CWS	22	15	20	11	10	16	11	14	17	17	11	12	14	190
		<b>Total</b>	<b>176</b>	<b>150</b>	<b>166</b>	<b>135</b>	<b>131</b>	<b>141</b>	<b>134</b>	<b>200</b>	<b>149</b>	<b>175</b>	<b>143</b>	<b>157</b>	<b>200</b>	<b>2057</b>
	Monmouth South	CPS	114	131	120	116	107	109	120	134	108	100	114	130	151	1512
		CWS	14	13	10	11	11	6	7	11	11	11	17	12	12	151
		<b>Total</b>	<b>128</b>	<b>144</b>	<b>130</b>	<b>127</b>	<b>118</b>	<b>115</b>	<b>116</b>	<b>131</b>	<b>145</b>	<b>119</b>	<b>117</b>	<b>131</b>	<b>142</b>	<b>1663</b>
	County Totals	CPS	268	266	266	240	228	234	232	306	266	266	232	259	316	3379
		CWS	36	28	30	22	21	22	18	25	28	28	28	29	26	341
		<b>Total</b>	<b>304</b>	<b>294</b>	<b>296</b>	<b>262</b>	<b>249</b>	<b>256</b>	<b>250</b>	<b>331</b>	<b>294</b>	<b>294</b>	<b>260</b>	<b>288</b>	<b>342</b>	<b>3720</b>
MORRIS	Morris East	CPS	82	62	75	89	53	70	67	74	82	73	75	101	89	992
		CWS	14	14	11	7	7	4	8	6	7	12	11	5	8	114
		<b>Total</b>	<b>96</b>	<b>76</b>	<b>86</b>	<b>96</b>	<b>60</b>	<b>74</b>	<b>75</b>	<b>80</b>	<b>89</b>	<b>85</b>	<b>86</b>	<b>106</b>	<b>97</b>	<b>1106</b>
	Morris West	CPS	89	78	70	86	76	57	89	95	90	84	99	78	101	1092
		CWS	13	14	6	8	5	6	9	10	10	7	8	9	15	120
		<b>Total</b>	<b>102</b>	<b>92</b>	<b>76</b>	<b>94</b>	<b>81</b>	<b>63</b>	<b>98</b>	<b>105</b>	<b>100</b>	<b>91</b>	<b>107</b>	<b>87</b>	<b>116</b>	<b>1212</b>
	County Totals	CPS	171	140	145	175	129	127	156	169	172	157	174	179	190	2084
		CWS	27	28	17	15	12	10	17	16	17	19	19	14	23	234
		<b>Total</b>	<b>198</b>	<b>168</b>	<b>162</b>	<b>190</b>	<b>141</b>	<b>137</b>	<b>173</b>	<b>185</b>	<b>189</b>	<b>176</b>	<b>193</b>	<b>193</b>	<b>213</b>	<b>2318</b>
OCEAN	Ocean North	CPS	167	171	182	173	142	148	162	178	172	159	154	151	158	2117
		CWS	34	31	19	20	18	17	11	15	13	14	18	22	24	256
		<b>Total</b>	<b>201</b>	<b>202</b>	<b>201</b>	<b>193</b>	<b>160</b>	<b>165</b>	<b>173</b>	<b>193</b>	<b>185</b>	<b>173</b>	<b>172</b>	<b>173</b>	<b>182</b>	<b>2373</b>
	Ocean South	CPS	176	161	176	148	110	136	149	170	144	145	123	116	168	1922
		CWS	17	26	19	19	20	9	15	19	12	15	9	16	20	216
		<b>Total</b>	<b>193</b>	<b>187</b>	<b>195</b>	<b>167</b>	<b>130</b>	<b>145</b>	<b>164</b>	<b>189</b>	<b>156</b>	<b>160</b>	<b>132</b>	<b>132</b>	<b>188</b>	<b>2138</b>
	County Totals	CPS	343	332	358	321	252	284	311	348	316	304	277	267	326	4039
		CWS	51	57	38	39	38	26	26	34	25	29	27	38	44	472
		<b>Total</b>	<b>394</b>	<b>389</b>	<b>396</b>	<b>360</b>	<b>290</b>	<b>310</b>	<b>337</b>	<b>382</b>	<b>341</b>	<b>333</b>	<b>304</b>	<b>305</b>	<b>370</b>	<b>4511</b>
PASSAIC	Passaic Central	CPS	134	135	158	115	132	90	143	169	160	155	144	165	187	1887
		CWS	26	15	26	12	9	11	20	22	18	14	15	29	24	241
		<b>Total</b>	<b>160</b>	<b>150</b>	<b>184</b>	<b>127</b>	<b>141</b>	<b>101</b>	<b>163</b>	<b>191</b>	<b>178</b>	<b>169</b>	<b>159</b>	<b>194</b>	<b>211</b>	<b>2128</b>
	Passaic North	CPS	124	150	142	153	126	130	135	193	157	152	104	136	182	1884
		CWS	26	26	20	11	18	14	15	18	15	9	11	24	22	229
		<b>Total</b>	<b>150</b>	<b>176</b>	<b>162</b>	<b>164</b>	<b>144</b>	<b>144</b>	<b>150</b>	<b>211</b>	<b>172</b>	<b>161</b>	<b>115</b>	<b>160</b>	<b>204</b>	<b>2113</b>
	County Totals	CPS	258	285	300	268	258	220	278	362	317	307	248	301	369	3771
		CWS	52	41	46	23	27	25	35	40	33	23	26	53	46	470
		<b>Total</b>	<b>310</b>	<b>326</b>	<b>346</b>	<b>291</b>	<b>285</b>	<b>245</b>	<b>313</b>	<b>402</b>	<b>350</b>	<b>330</b>	<b>274</b>	<b>354</b>	<b>415</b>	<b>4241</b>
SALEM	Salem	CPS	72	67	63	59	51	41	66	71	50	49	58	59	70	776
		CWS	11	9	13	5	10	7	9	7	6	8	7	15	14	121
		<b>Total</b>	<b>83</b>	<b>76</b>	<b>76</b>	<b>64</b>	<b>61</b>	<b>48</b>	<b>75</b>	<b>78</b>	<b>56</b>	<b>57</b>	<b>65</b>	<b>74</b>	<b>84</b>	<b>897</b>
	County Totals	CPS	72	67	63	59	51	41	66	71	50	49	58	59	70	776
		CWS	11	9	13	5	10	7	9	7	6	8	7	15	14	121
		<b>Total</b>	<b>83</b>	<b>76</b>	<b>76</b>	<b>64</b>	<b>61</b>	<b>48</b>	<b>75</b>	<b>78</b>	<b>56</b>	<b>57</b>	<b>65</b>	<b>74</b>	<b>84</b>	<b>897</b>
SOMERSET	Somerset	CPS	119	127	125	114	96	85	128	133	125	101	103	132	149	1537
		CWS	11	12	28	16	12	12	3	15	5	10	9	9	16	158
		<b>Total</b>	<b>130</b>	<b>139</b>	<b>153</b>	<b>130</b>	<b>108</b>	<b>97</b>	<b>131</b>	<b>148</b>	<b>130</b>	<b>111</b>	<b>112</b>	<b>141</b>	<b>165</b>	<b>1695</b>
	County Totals	CPS	119	127	125	114	96	85	128	133	125	101	103	132	149	1537
		CWS	11	12	28	16	12	12	3	15	5	10	9	9	16	158
<b>Total</b>	<b>130</b>	<b>139</b>	<b>153</b>	<b>130</b>	<b>108</b>	<b>97</b>	<b>131</b>	<b>148</b>	<b>130</b>	<b>111</b>	<b>112</b>	<b>141</b>	<b>165</b>	<b>1695</b>		

Data in this report is preliminary and may differ from any final report. This report is produced to ensure continuous quality improvement throughout DCF.



**Table 5: Monthly Count of CPS Reports and CWS Referrals Assigned to CP&P Local Offices**

County	Local Office	Type of Referral														Total	
			Mar 2021	Apr 2021	May 2021	Jun 2021	Jul 2021	Aug 2021	Sep 2021	Oct 2021	Nov 2021	Dec 2021	Jan 2022	Feb 2022	Mar 2022		
SUSSEX	Sussex	CPS	93	86	70	64	52	62	82	86	71	67	77	89	98	997	
		CWS	10	9	8	6	10	5	8	13	14	5	7	11	9	115	
		<b>Total</b>	<b>103</b>	<b>95</b>	<b>78</b>	<b>70</b>	<b>62</b>	<b>67</b>	<b>90</b>	<b>99</b>	<b>85</b>	<b>72</b>	<b>84</b>	<b>100</b>	<b>107</b>	<b>1112</b>	
	County Totals	CPS	93	86	70	64	52	62	82	86	71	67	77	89	98	997	
		CWS	10	9	8	6	10	5	8	13	14	5	7	11	9	115	
		<b>Total</b>	<b>103</b>	<b>95</b>	<b>78</b>	<b>70</b>	<b>62</b>	<b>67</b>	<b>90</b>	<b>99</b>	<b>85</b>	<b>72</b>	<b>84</b>	<b>100</b>	<b>107</b>	<b>1112</b>	
UNION	Union Central	CPS	68	67	88	70	74	65	72	87	64	82	56	78	95	966	
		CWS	25	14	17	5	10	9	8	3	11	5	10	8	16	141	
		<b>Total</b>	<b>93</b>	<b>81</b>	<b>105</b>	<b>75</b>	<b>84</b>	<b>74</b>	<b>80</b>	<b>90</b>	<b>75</b>	<b>87</b>	<b>66</b>	<b>86</b>	<b>111</b>	<b>1107</b>	
	Union East	CPS	66	61	88	95	72	68	66	93	88	87	108	75	104	1071	
		CWS	15	15	18	9	2	8	11	9	9	15	8	9	14	142	
		<b>Total</b>	<b>81</b>	<b>76</b>	<b>106</b>	<b>104</b>	<b>74</b>	<b>76</b>	<b>77</b>	<b>102</b>	<b>97</b>	<b>102</b>	<b>116</b>	<b>84</b>	<b>118</b>	<b>1213</b>	
	Union West	CPS	79	80	101	79	70	70	89	93	95	79	67	108	115	1125	
		CWS	18	23	9	8	12	6	10	8	10	9	8	12	19	152	
		<b>Total</b>	<b>97</b>	<b>103</b>	<b>110</b>	<b>87</b>	<b>82</b>	<b>76</b>	<b>99</b>	<b>101</b>	<b>105</b>	<b>88</b>	<b>75</b>	<b>120</b>	<b>134</b>	<b>1277</b>	
	County Totals	CPS	213	208	277	244	216	203	227	273	247	248	231	261	314	3162	
		CWS	58	52	44	22	24	23	29	20	30	29	26	29	49	435	
		<b>Total</b>	<b>271</b>	<b>260</b>	<b>321</b>	<b>266</b>	<b>240</b>	<b>226</b>	<b>256</b>	<b>293</b>	<b>277</b>	<b>277</b>	<b>257</b>	<b>290</b>	<b>363</b>	<b>3597</b>	
WARREN	Warren	CPS	83	64	87	77	78	51	91	64	86	62	77	77	103	1000	
		CWS	19	9	17	9	9	4	8	4	7	5	9	6	18	124	
		<b>Total</b>	<b>102</b>	<b>73</b>	<b>104</b>	<b>86</b>	<b>87</b>	<b>55</b>	<b>99</b>	<b>68</b>	<b>93</b>	<b>67</b>	<b>86</b>	<b>83</b>	<b>121</b>	<b>1124</b>	
	County Totals	CPS	83	64	87	77	78	51	91	64	86	62	77	77	103	1000	
		CWS	19	9	17	9	9	4	8	4	7	5	9	6	18	124	
		<b>Total</b>	<b>102</b>	<b>73</b>	<b>104</b>	<b>86</b>	<b>87</b>	<b>55</b>	<b>99</b>	<b>68</b>	<b>93</b>	<b>67</b>	<b>86</b>	<b>83</b>	<b>121</b>	<b>1124</b>	
County CPS Referral Total		CPS	4,475	4,248	4,686	4,264	3,754	3,712	4,360	5,001	4,508	4,417	4,107	4,653	5,532	57,717	
County CWS Referral Total		CWS	782	711	690	540	527	437	524	573	506	520	484	588	675	7,557	
County Referral Total		Total	5,257	4,959	5,376	4,804	4,281	4,149	4,884	5,574	5,014	4,937	4,591	5,241	6,207	65,274	
Central Region IAIU		CPS	30	20	41	22	35	25	42	53	31	37	32	43	54	465	
		CWS	0	0	0	0	0	0	0	0	0	0	0	0	0	0	0
		<b>Total</b>	<b>30</b>	<b>20</b>	<b>41</b>	<b>22</b>	<b>35</b>	<b>25</b>	<b>42</b>	<b>53</b>	<b>31</b>	<b>37</b>	<b>32</b>	<b>43</b>	<b>54</b>	<b>465</b>	
Metro Region IAIU		CPS	22	14	18	17	11	22	36	28	26	21	27	36	35	313	
		CWS	0	0	0	0	0	0	0	1	0	0	0	0	0	1	3
		<b>Total</b>	<b>22</b>	<b>14</b>	<b>18</b>	<b>17</b>	<b>11</b>	<b>22</b>	<b>36</b>	<b>29</b>	<b>26</b>	<b>21</b>	<b>27</b>	<b>36</b>	<b>35</b>	<b>314</b>	
Northern Region IAIU		CPS	22	20	28	18	23	19	27	39	44	41	28	40	50	399	
		CWS	1	0	0	0	0	0	0	0	0	1	0	0	0	2	3
		<b>Total</b>	<b>23</b>	<b>20</b>	<b>28</b>	<b>18</b>	<b>23</b>	<b>19</b>	<b>27</b>	<b>39</b>	<b>44</b>	<b>42</b>	<b>28</b>	<b>40</b>	<b>50</b>	<b>401</b>	
Southern Region IAIU		CPS	46	35	48	33	42	42	51	41	33	42	35	46	59	553	
		CWS	0	0	0	0	0	0	0	0	0	0	0	0	0	0	0
		<b>Total</b>	<b>46</b>	<b>35</b>	<b>48</b>	<b>33</b>	<b>42</b>	<b>42</b>	<b>51</b>	<b>41</b>	<b>33</b>	<b>42</b>	<b>35</b>	<b>46</b>	<b>59</b>	<b>553</b>	
IAIU CPS Subtotal		CPS	120	89	135	90	111	108	156	161	134	141	122	165	198	1,730	
IAIU CWS Subtotal		CWS	1	0	0	0	0	0	1	0	1	0	0	0	0	3	
IAIU Subtotal		Total	121	89	135	90	111	108	156	162	134	142	122	165	198	1,733	
County and IAIU CPS Subtotal		CPS	4,595	4,337	4,821	4,354	3,865	3,820	4,516	5,162	4,642	4,558	4,229	4,818	5,730	59,447	
County and IAIU CWS Subtotal		CWS	783	711	690	540	527	437	524	574	506	521	484	588	675	7,560	
Unable to Determine(1)		Total	108	98	94	108	89	91	83	107	82	78	84	92	102	1,216	
Other Offices		Total	1	2	1	2	3	0	0	0	1	0	4	0	14	14	
Grand Total		Total	5,487	5,148	5,606	5,004	4,484	4,348	5,123	5,843	5,230	5,158	4,797	5,502	6,507	68,237	

(1)CPS Reports or CWS Referrals not assigned to an office through the Assignment Designee, but were assigned to an office for an assessment or investigation.