



Child Protection and Permanency

Monthly Screening and Investigation Report April 2022

Christine Norbut Beyer, MSW
Commissioner



Table of Contents

Table 1: NJ State Central Registry Activity: Monthly Child Abuse and Neglect Hotline Calls, Intakes and Assignments to Child Protection & Permanency (CP&P) Offices

Chart 1: CP&P Annual Trends in Child Protection Services (CPS) Reports and Child Welfare Services (CWS) Referrals

Table 2: Assignments to CP&P Offices: CPS Reports and CWS Referrals

Table 3: Source of CPS Reports and CWS Referrals

Table 4: Monthly Count of CPS Reports and CWS Referrals Assigned to Counties

Table 5: Monthly Count of CPS Reports and CWS Referrals Assigned to CP&P Local Offices

Table 1: NJ State Central Registry Activity: Monthly Child Abuse and Neglect Hotline Calls, Intakes and Assignments to CP&P Offices^{1,2,7}

2021-2022	Hotline Call Activity				Intakes Recorded in NJ SPIRIT ^{6,8}													Assignments to CP&P Offices					
	Total Calls to SCR ³	Abandon Calls ⁴	Average Time to Answer (seconds)	Resulting NJS Intakes ⁵	CPS Reports		CWS Referrals		No Action Required (NAR)		Related Information (RI)		Information & Referral (I&R)		Information Only (IO)		Unusual Incident (UIRS)		CPS Reports		CWS Referrals		Total
					n	%	n	%	n	%	n	%	n	%	n	%	n	%	n	%	n	%	
April 2021	11,772	680	94	12,287	4,398	35.8%	750	6.1%	187	1.5%	2,796	22.8%	2,287	18.6%	1,869	15.2%	0	0.0%	4,398	85.4%	750	14.6%	5,148
May 2021	12,496	686	87	13,132	4,870	37.1%	734	5.6%	219	1.7%	3,025	23.0%	2,523	19.2%	1,761	13.4%	0	0.0%	4,870	86.9%	736	13.1%	5,606
June 2021	11,893	895	117	12,269	4,412	36.0%	591	4.8%	188	1.5%	2,943	24.0%	2,430	19.8%	1,705	13.9%	0	0.0%	4,412	88.2%	592	11.8%	5,004
July 2021	10,578	638	127	10,996	3,914	35.6%	569	5.2%	142	1.3%	2,642	24.0%	2,079	18.9%	1,650	15.0%	0	0.0%	3,914	87.3%	570	12.7%	4,484
August 2021	10,365	508	78	10,897	3,866	35.5%	482	4.4%	172	1.6%	2,371	21.8%	2,301	21.1%	1,704	15.6%	1	0.0%	3,866	88.9%	482	11.1%	4,348
September 2021	12,259	591	91	12,780	4,559	35.7%	564	4.4%	148	1.2%	2,794	21.9%	2,894	22.6%	1,819	14.2%	2	0.0%	4,559	89.0%	564	11.0%	5,123
October 2021	14,262	1,183	152	14,500	5,213	36.0%	631	4.4%	200	1.4%	3,287	22.7%	3,277	22.6%	1,890	13.0%	2	0.0%	5,213	89.2%	630	10.8%	5,843
November 2021	13,077	1,619	262	12,689	4,689	37.0%	539	4.2%	165	1.3%	2,817	22.2%	2,865	22.6%	1,609	12.7%	5	0.0%	4,689	89.7%	541	10.3%	5,230
December 2021	12,921	1,426	222	12,594	4,601	36.5%	558	4.4%	157	1.2%	2,746	21.8%	2,858	22.7%	1,660	13.2%	14	0.1%	4,601	89.2%	557	10.8%	5,158
January 2022	11,733	942	163	11,798	4,274	36.2%	524	4.4%	116	1.0%	2,561	21.7%	2,641	22.4%	1,672	14.2%	10	0.1%	4,274	89.1%	523	10.9%	4,797
February 2022	13,523	1,838	304	12,923	4,867	37.7%	632	4.9%	168	1.3%	2,732	21.1%	2,990	23.1%	1,524	11.8%	10	0.1%	4,867	88.5%	635	11.5%	5,502
March 2022	15,347	1,916	281	14,886	5,781	38.8%	727	4.9%	207	1.4%	2,946	19.8%	3,468	23.3%	1,750	11.8%	7	0.0%	5,780	88.8%	727	11.2%	6,507
April 2022	13,145	2,124	398	12,290	4,669	38.0%	637	5.2%	168	1.4%	2,486	20.2%	2,786	22.7%	1,537	12.5%	7	0.1%	4,669	88.0%	636	12.0%	5,305
	12,567	1,157	183	12,619	4,624	36.6%	611	4.8%	172	1.4%	2,780	22.0%	2,723	21.6%	1,704	13.5%	4	0.0%	4,624	88.3%	611	11.7%	5,235
Overall Total	163,371	15,046		164,041	60,113		7,938		2,237		36,146		35,399		22,150		58		60,112	88.3%	7,943	11.7%	68,055

¹Comes from three distinct sources: (1) the Automatic Call Distribution (ACD) phone system; which keeps a count of the number of calls and call routing; (2) Monthly NJSpirit Intakes; which record decision making on calls received by hotline screeners, and (3)

²The number of Intakes, CPS Reports, and CWS Referrals are based on an extract from NJSpirit.

³Data extracted by the Office of Research, Evaluation, and Reporting on **May 09, 2022** includes all Intakes, CPS Reports, and CWS Referrals received from **April 01, 2022** through **April 30, 2022**.

⁴The number calls received through the ACD System that were directed to a screener from any call-in phone number.

⁵The number of calls received through the ACD System that are abandoned either while waiting in queue or while ringing.

⁶The number of Intakes entered in NJSpirit from the number of calls received.

⁷The number of Intakes recorded in NJSpirit, by type of Intake. There is not a one-to-one relationship between an ACD call and an Intake; multiple calls to State Central Registry (SCR) may result in a single Intake, or one call may result in multiple Intakes.

⁸Intake: The process of documenting: a report of alleged abuse or neglect of a child (CPS); a request for services on behalf of a child, or a referral of a child for services (CWS); a call in which the caller provides additional or clarifying information about a current

CP&P Annual Trends in CPS Reports and CWS Referrals

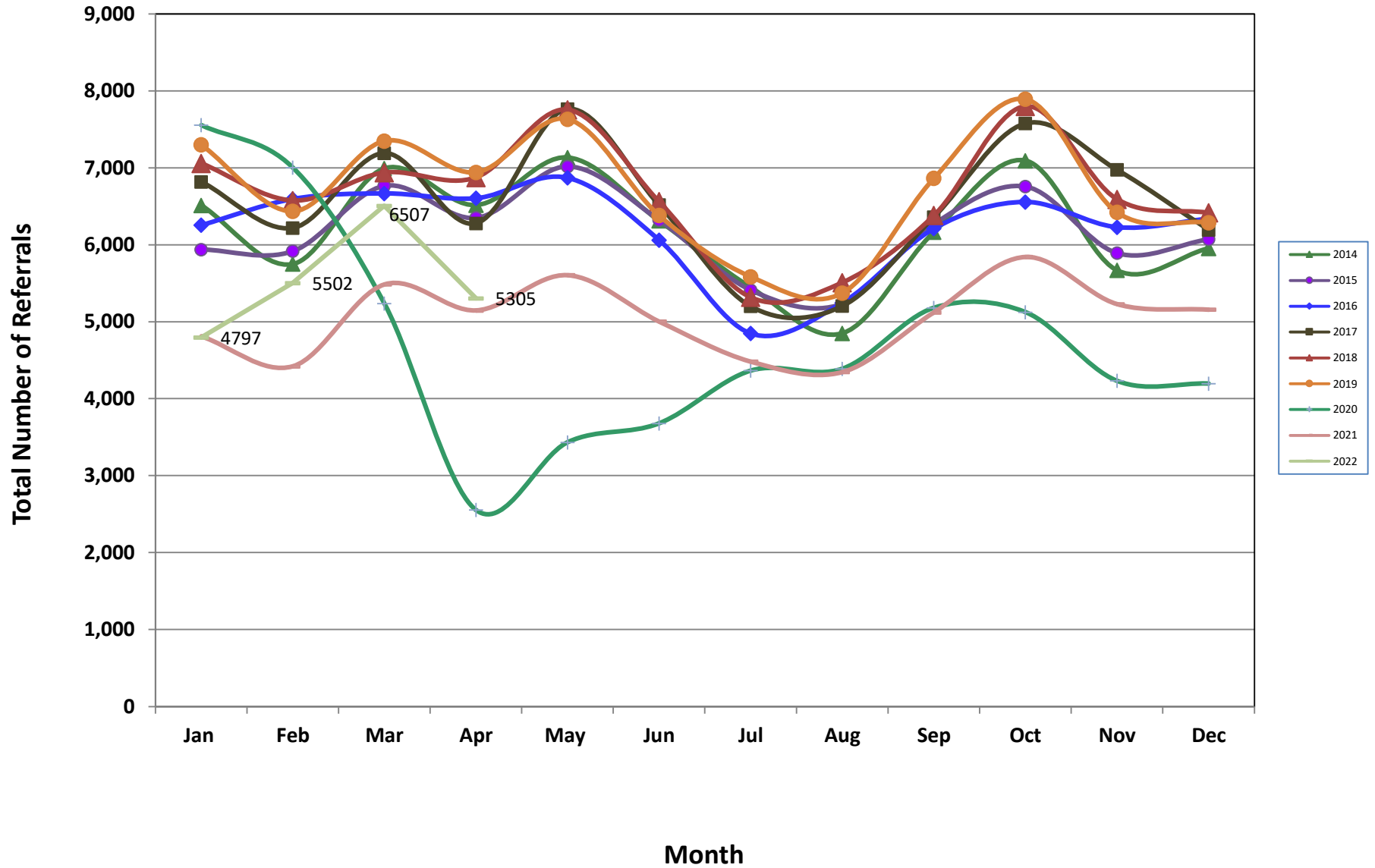


Table 2: Assignments to CP&P Offices: CPS Reports and CWS Referrals¹

Intake Date ³		CPS Reports ²	CWS Referrals ²	Total Assignments ²
2016	Jan 2016	4,686	1,571	6,257
	Feb 2016	4,974	1,622	6,596
	Mar 2016	5,000	1,669	6,669
	Apr 2016	5,065	1,542	6,607
	May 2016	5,238	1,633	6,871
	Jun 2016	4,602	1,461	6,063
	Jul 2016	3,663	1,187	4,850
	Aug 2016	3,941	1,307	5,248
	Sep 2016	4,654	1,559	6,213
	Oct 2016	4,935	1,622	6,557
	Nov 2016	4,677	1,552	6,229
	Dec 2016	4,762	1,580	6,342
	Total	56,197	18,305	74,502
2017	Jan 2017	5,111	1,708	6,819
	Feb 2017	4,716	1,504	6,220
	Mar 2017	5,349	1,843	7,192
	Apr 2017	4,790	1,490	6,280
	May 2017	5,847	1,919	7,766
	Jun 2017	4,853	1,665	6,518
	Jul 2017	3,814	1,389	5,203
	Aug 2017	3,866	1,340	5,206
	Sep 2017	4,719	1,643	6,362
	Oct 2017	5,613	1,966	7,579
	Nov 2017	5,223	1,753	6,976
	Dec 2017	4,601	1,594	6,195
	Total	58,502	19,814	78,316
2018	Jan 2018	5,276	1,784	7,060
	Feb 2018	4,933	1,644	6,577
	Mar 2018	5,212	1,727	6,939
	Apr 2018	5,275	1,601	6,876
	May 2018	5,920	1,836	7,756
	Jun 2018	4,948	1,615	6,563
	Jul 2018	4,011	1,308	5,319
	Aug 2018	4,102	1,408	5,510
	Sep 2018	4,748	1,634	6,382
	Oct 2018	5,790	2,011	7,801
	Nov 2018	4,973	1,620	6,593
	Dec 2018	4,891	1,527	6,418
	Total	60,079	19,715	79,794

Table 2: Assignments to CP&P Offices: CPS Reports and CWS Referrals¹

Intake Date ³		CPS Reports ²	CWS Referrals ²	Total Assignments ²
2019	Jan 2019	5,443	1,858	7,301
	Feb 2019	4,811	1,628	6,439
	Mar 2019	5,677	1,824	7,501
	Apr 2019	5,313	1,630	6,943
	May 2019	5,853	1,781	7,634
	Jun 2019	4,874	1,509	6,383
	Jul 2019	4,277	1,309	5,586
	Aug 2019	4,068	1,306	5,374
	Sep 2019	5,315	1,551	6,866
	Oct 2019	5,968	1,926	7,894
	Nov 2019	4,991	1,432	6,423
	Dec 2019	4,855	1,434	6,289
	Total	61,445	19,188	80,633
2020	Jan 2020	5,715	1,842	7,557
	Feb 2020	5,380	1,624	7,004
	Mar 2020	4,172	1,065	5,237
	Apr 2020	2,149	407	2,556
	May 2020	2,897	537	3,434
	Jun 2020	3,045	636	3,681
	Jul 2020	3,628	738	4,366
	Aug 2020	3,569	822	4,391
	Sep 2020	4,153	1,030	5,183
	Oct 2020	4,257	868	5,125
	Nov 2020	3,564	670	4,234
	Dec 2020	3,517	681	4,198
	Total	46,046	10,920	56,966
2021	Jan 2021	4,018	794	4,812
	Feb 2021	3,767	655	4,422
	Mar 2021	4,657	830	5,487
	Apr 2021	4,398	750	5,148
	May 2021	4,870	736	5,606
	Jun 2021	4,412	592	5,004
	Jul 2021	3,914	570	4,484
	Aug 2021	3,866	482	4,348
	Sep 2021	4,559	564	5,123
	Oct 2021	5,213	630	5,843
	Nov 2021	4,689	541	5,230
	Dec 2021	4,601	557	5,158
	Total	52,964	7,701	60,665
2022	Jan 2022	4,274	523	4,797
	Feb 2022	4,867	635	5,502
	Mar 2022	5,780	727	6,507
	Apr 2022	4,669	636	5,305
	Total	19,590	2,521	22,111
Grand Total		335,233	95,643	430,876

Table 3: Source of CPS Reports and CWS Referrals

CPS Reports and CWS Referrals	Source	Apr 2021	May 2021	Jun 2021	Jul 2021	Aug 2021	Sep 2021	Oct 2021	Nov 2021	Dec 2021	Jan 2022	Feb 2022	Mar 2022	Apr 2022		13 Month Total	
	School Staff	759	913	531	145	83	863	1,450	1,303	1,252	983	1,549	1,998	1,227	23%	13,056	19%
	Healthcare Provider	897	917	819	839	789	824	780	746	706	746	750	895	728	14%	10,436	15%
	Law Enforcement	1,329	1,542	1,466	1,442	1,384	1,397	1,446	1,340	1,341	1,238	1,234	1,478	1,373	26%	18,010	26%
	Government Agency	309	272	221	248	265	266	222	205	209	212	253	261	261	5%	3,204	5%
	Parent	409	387	396	392	404	347	393	377	378	347	349	380	333	6%	4,892	7%
	Relative/Friend/Neighbor	338	355	382	362	363	372	350	289	342	337	275	298	301	6%	4,364	6%
	Anonymous	450	487	476	387	401	444	506	364	367	366	461	471	410	8%	5,590	8%
	CP&P	89	89	76	58	45	60	73	45	49	54	56	75	62	1%	831	1%
	Court/Legal	102	111	119	125	88	120	126	89	89	100	108	144	140	3%	1,461	2%
	Community Group/Individual	159	175	176	149	159	137	175	169	144	158	183	198	176	3%	2,158	3%
	Facility Staff (incl Correctional Facility)	64	67	66	65	69	51	55	47	53	54	56	55	59	1%	761	1%
	Child (Self)	37	33	22	26	49	41	42	28	30	29	29	25	25	0%	416	1%
	Other	197	245	245	226	236	189	214	217	182	160	183	209	188	4%	2,691	4%
	Daycare/Babysitter	9	13	9	20	13	12	11	11	16	13	16	20	22	0%	185	0%
Total	5,148	5,606	5,004	4,484	4,348	5,123	5,843	5,230	5,158	4,797	5,502	6,507	5,305		68,055		

Table 4: Monthly Count of CPS Reports and CWS Referrals Assigned to Counties

County														Average Number of Assignments Last 13 Months	Mar 22 to Apr 22 Numerical Difference
	Apr 2021	May 2021	Jun 2021	Jul 2021	Aug 2021	Sep 2021	Oct 2021	Nov 2021	Dec 2021	Jan 2022	Feb 2022	Mar 2022	Apr 2022		
Atlantic	224	265	241	197	182	215	255	234	215	189	245	268	222	227	-46
Bergen	314	343	273	255	249	325	350	345	360	290	354	425	348	325	-77
Burlington	269	307	286	238	223	263	280	264	270	264	283	359	255	274	-104
Camden	459	456	403	381	371	466	511	407	419	404	449	542	458	440	-84
Cape May	68	81	56	81	72	70	70	66	70	62	59	74	62	69	-12
Cumberland	190	173	165	153	140	180	196	167	190	149	160	202	166	172	-36
Essex	441	520	501	457	442	484	565	535	489	456	550	647	532	509	-115
Gloucester	237	219	228	205	207	208	221	215	204	216	195	257	217	218	-40
Hudson	313	341	319	255	287	303	371	349	321	341	392	415	324	333	-91
Hunterdon	47	47	34	37	33	39	52	44	44	40	33	55	46	42	-9
Mercer	213	264	230	200	185	222	245	218	230	189	229	263	217	223	-46
Middlesex	364	428	349	299	317	385	472	355	408	356	464	520	388	393	-132
Monmouth	294	296	262	249	256	250	331	294	294	260	288	342	297	286	-45
Morris	168	162	190	141	137	173	185	189	176	193	193	213	180	177	-33
Ocean	389	396	360	290	310	337	382	341	333	304	305	370	332	342	-38
Passaic	326	346	291	285	245	313	402	350	330	274	354	415	347	329	-68
Salem	76	76	64	61	48	75	78	56	57	65	74	84	55	67	-29
Somerset	139	153	130	108	97	131	148	130	111	112	141	165	107	129	-58
Sussex	95	78	70	62	67	90	99	85	72	84	100	107	95	85	-12
Union	260	321	266	240	226	256	293	277	277	257	290	363	317	280	-46
Warren	73	104	86	87	55	99	68	93	67	86	83	121	79	85	-42
County Subtotals	4,959	5,376	4,804	4,281	4,149	4,884	5,574	5,014	4,937	4,591	5,241	6,207	5,044	5,005	-1,163
Central Region IAIU	20	41	22	35	25	42	53	31	37	32	43	54	35	36	-19
Metro Region IAIU	14	18	17	11	22	36	29	26	21	27	36	35	35	25	0
Northern Region IAIU	20	28	18	23	19	27	39	44	42	28	40	50	38	32	-12
Southern Region IAIU	35	48	33	42	42	51	41	33	42	35	46	59	46	43	-13
IAIU Subtotals	89	135	90	111	108	156	162	134	142	122	165	198	154	136	-44
¹ Unable to Determine	98	94	108	89	91	83	107	82	78	84	92	102	107	93	5
Other Offices	2	1	2	3	0	0	0	0	1	0	4	0	0	1	0
Grand Total	5,148	5,606	5,004	4,484	4,348	5,123	5,843	5,230	5,158	4,797	5,502	6,507	5,305	5,235	-1,202

¹CPS Reports or CWS Referrals not assigned to an office through the Assignment Designee, but were assigned to an office for an assessment or investigation.



Table 5: Monthly Count of CPS Reports and CWS Referrals Assigned to CP&P Local Offices

County	Local Office	Type of Referral													Total	
			Apr 2021	May 2021	Jun 2021	Jul 2021	Aug 2021	Sep 2021	Oct 2021	Nov 2021	Dec 2021	Jan 2022	Feb 2022	Mar 2022		Apr 2022
ATLANTIC	Atlantic East	CPS	105	128	130	95	97	106	126	118	104	114	124	128	106	1,481
		CWS	21	22	14	12	17	10	13	12	14	9	13	21	26	204
		Total	126	150	144	107	114	116	139	130	118	123	137	149	132	1,685
	Atlantic West	CPS	87	94	83	83	60	82	104	90	85	58	90	103	81	1,100
		CWS	11	21	14	7	8	17	12	14	12	8	18	16	9	167
		Total	98	115	97	90	68	99	116	104	97	66	108	119	90	1,267
	County Totals	CPS	192	222	213	178	157	188	230	208	189	172	214	231	187	2,581
		CWS	32	43	28	19	25	27	25	26	26	17	31	37	35	371
		Total	224	265	241	197	182	215	255	234	215	189	245	268	222	2,952
BERGEN	Bergen Central	CPS	111	122	89	85	85	132	139	133	127	111	152	169	119	1,574
		CWS	17	12	15	10	6	13	19	18	11	13	17	17	18	186
		Total	128	134	104	95	91	145	158	151	138	124	169	186	137	1,760
	Bergen South	CPS	161	191	157	139	147	157	177	174	197	148	170	217	188	2,223
		CWS	25	18	12	21	11	23	15	20	25	18	15	22	23	248
		Total	186	209	169	160	158	180	192	194	222	166	185	239	211	2,471
	County Totals	CPS	272	313	246	224	232	289	316	307	324	259	322	386	307	3,797
		CWS	42	30	27	31	17	36	34	38	36	31	32	39	41	434
		Total	314	343	273	255	249	325	350	345	360	290	354	425	348	4,231
BURLINGTON	Burlington East	CPS	121	128	129	91	91	103	137	115	111	119	121	162	103	1,531
		CWS	27	21	21	20	10	17	11	18	16	16	11	17	17	222
		Total	148	149	150	111	101	120	148	133	127	135	132	179	120	1,753
	Burlington West	CPS	98	135	117	105	100	125	115	115	128	119	127	156	118	1,558
		CWS	23	23	19	22	22	18	17	16	15	10	24	24	17	250
		Total	121	158	136	127	122	143	132	131	143	129	151	180	135	1,808
	County Totals	CPS	219	263	246	196	191	228	252	230	239	238	248	318	221	3,089
		CWS	50	44	40	42	32	35	28	34	31	26	35	41	34	472
		Total	269	307	286	238	223	263	280	264	270	264	283	359	255	3,561
CAMDEN	Camden Central	CPS	91	105	88	86	88	105	117	93	91	91	104	111	95	1,265
		CWS	12	17	13	12	16	15	17	15	14	16	16	7	9	179
		Total	103	122	101	98	104	120	134	108	105	107	120	118	104	1,444
	Camden East	CPS	112	104	84	81	84	101	128	94	81	84	95	106	107	1,261
		CWS	18	10	13	13	16	10	16	14	20	22	11	20	15	198
		Total	130	114	97	94	100	111	144	108	101	106	106	126	122	1,459
	Camden North	CPS	93	97	92	79	67	97	102	91	87	89	103	135	98	1,230
		CWS	15	17	11	9	13	17	15	5	14	9	16	22	22	185
		Total	108	114	103	88	80	114	117	96	101	98	119	157	120	1,415
	Camden South	CPS	102	91	92	88	75	108	96	85	94	83	95	117	101	1,227
		CWS	16	15	10	13	12	13	20	10	18	10	9	24	11	181
		Total	118	106	102	101	87	121	116	95	112	93	104	141	112	1,408
	County Totals	CPS	398	397	356	334	314	411	443	363	353	347	397	469	401	4,983
		CWS	61	59	47	47	57	55	68	44	66	57	52	73	57	743
		Total	459	456	403	381	371	466	511	407	419	404	449	542	458	5,726
CAPE MAY	Cape May	CPS	60	70	51	63	64	61	61	56	61	56	52	63	56	774
		CWS	8	11	5	18	8	9	9	10	9	6	7	11	6	117
		Total	68	81	56	81	72	70	70	66	70	62	59	74	62	891
	County Totals	CPS	60	70	51	63	64	61	61	56	61	56	52	63	56	774
		CWS	8	11	5	18	8	9	9	10	9	6	7	11	6	117
		Total	68	81	56	81	72	70	70	66	70	62	59	74	62	891
CUMBERLAND	Cumberland East	CPS	55	54	66	68	58	77	75	59	71	56	54	74	59	826
		CWS	11	11	11	4	4	8	11	6	8	11	14	10	4	113
		Total	66	65	77	72	62	85	86	65	79	67	68	84	63	939
	Cumberland West	CPS	110	91	74	73	71	89	102	94	96	67	81	109	90	1,147
		CWS	14	17	14	8	7	6	8	8	15	15	11	9	13	145
		Total	124	108	88	81	78	95	110	102	111	82	92	118	103	1,292
	County Totals	CPS	165	145	140	141	129	166	177	153	167	123	135	183	149	1,973
		CWS	25	28	25	12	11	14	19	14	23	26	25	19	17	258
		Total	190	173	165	153	140	180	196	167	190	149	160	202	166	2,231

Data in this report is preliminary and may differ from any final report. This report is produced to ensure continuous quality improvement throughout DCF.



Table 5: Monthly Count of CPS Reports and CWS Referrals Assigned to CP&P Local Offices

County	Local Office	Type of Referral													Total	
			Apr 2021	May 2021	Jun 2021	Jul 2021	Aug 2021	Sep 2021	Oct 2021	Nov 2021	Dec 2021	Jan 2022	Feb 2022	Mar 2022		Apr 2022
ESSEX	Essex Central	CPS	63	62	63	77	59	75	88	78	68	57	69	78	89	926
		CWS	14	9	9	15	12	6	14	7	12	6	13	10	14	141
		Total	77	71	72	92	71	81	102	85	80	63	82	88	103	1,067
	Essex North	CPS	66	79	71	68	49	50	78	85	109	81	88	115	82	1,021
		CWS	15	15	7	7	1	3	9	12	8	13	10	6	7	113
		Total	81	94	78	75	50	53	87	97	117	94	98	121	89	1,134
	Essex South	CPS	64	81	86	61	74	76	104	84	62	65	89	123	82	1051
		CWS	13	12	13	9	9	13	14	11	15	8	11	15	10	153
		Total	77	93	99	70	83	89	118	95	77	73	100	138	92	1204
	Newark Center City	CPS	77	74	67	67	64	75	86	64	75	79	71	90	75	964
		CWS	9	5	14	3	11	12	6	11	13	2	8	9	9	112
		Total	86	79	81	70	75	87	92	75	88	81	79	99	84	1076
	Newark Northeast	CPS	54	83	70	61	61	71	75	80	50	68	91	94	83	941
		CWS	11	10	11	18	7	9	14	6	5	8	13	14	5	131
		Total	65	93	81	79	68	80	89	86	55	76	104	108	88	1072
Newark South	CPS	45	83	86	58	81	83	72	85	65	55	79	88	65	945	
	CWS	10	7	4	13	14	11	5	12	7	14	8	5	11	121	
	Total	55	90	90	71	95	94	77	97	72	69	87	93	76	1066	
County Totals	CPS	369	462	443	392	388	430	503	476	429	405	487	588	476	5848	
	CWS	72	58	58	65	54	54	62	59	60	51	63	59	56	771	
	Total	441	520	501	457	442	484	565	535	489	456	550	647	532	6619	
GLOUCESTER	Gloucester East	CPS	91	94	85	85	76	80	97	88	90	86	84	107	79	1142
		CWS	17	16	13	15	8	19	13	13	7	14	12	16	18	181
		Total	108	110	98	100	84	99	110	101	97	100	96	123	97	1323
	Gloucester West	CPS	114	96	109	90	113	97	93	95	92	103	91	123	103	1319
		CWS	15	13	21	15	10	12	18	19	15	13	8	11	17	187
		Total	129	109	130	105	123	109	111	114	107	116	99	134	120	1506
	County Totals	CPS	205	190	194	175	189	177	190	183	182	189	175	230	182	2461
		CWS	32	29	34	30	18	31	31	32	22	27	20	27	35	368
		Total	237	219	228	205	207	208	221	215	204	216	195	257	217	2829
HUDSON	Hudson Central	CPS	78	96	78	63	104	78	111	80	70	78	93	99	74	1102
		CWS	16	16	20	11	8	15	13	18	15	9	18	17	11	187
		Total	94	112	98	74	112	93	124	98	85	87	111	116	85	1289
	Hudson North	CPS	59	72	57	60	60	59	68	80	81	90	98	108	65	957
		CWS	14	14	7	11	12	11	9	6	8	5	12	10	10	129
		Total	73	86	64	71	72	70	77	86	89	95	110	118	75	1086
	Hudson South	CPS	50	50	74	37	41	51	54	68	59	62	69	74	63	752
		CWS	14	12	8	7	3	9	12	4	5	12	8	4	10	108
		Total	64	62	82	44	44	60	66	72	64	74	77	78	73	860
	Hudson West	CPS	69	68	65	61	52	72	93	87	77	76	87	90	84	981
		CWS	13	13	10	5	7	8	11	6	6	9	7	13	7	115
		Total	82	81	75	66	59	80	104	93	83	85	94	103	91	1096
	County Totals	CPS	256	286	274	221	257	260	326	315	287	306	347	371	286	3792
		CWS	57	55	45	34	30	43	45	34	34	35	45	44	38	539
		Total	313	341	319	255	287	303	371	349	321	341	392	415	324	4331
HUNTERDON	Hunterdon	CPS	38	38	29	35	32	35	49	42	42	36	30	50	39	495
		CWS	9	9	5	2	1	4	3	2	2	4	3	5	7	56
		Total	47	47	34	37	33	39	52	44	44	40	33	55	46	551
	County Totals	CPS	38	38	29	35	32	35	49	42	42	36	30	50	39	495
		CWS	9	9	5	2	1	4	3	2	2	4	3	5	7	56
Total	47	47	34	37	33	39	52	44	44	40	33	55	46	551		
MERCER	Mercer North	CPS	108	128	113	92	90	103	85	97	95	87	99	129	91	1317
		CWS	8	11	17	20	12	13	18	12	12	13	16	14	18	184
		Total	116	139	130	112	102	116	103	109	107	100	115	143	109	1501
	Mercer South	CPS	81	109	88	74	76	91	128	101	108	76	107	106	100	1245
		CWS	16	16	12	14	7	15	14	8	15	13	7	14	8	159
	Total	97	125	100	88	83	106	142	109	123	89	114	120	108	1404	
	County Totals	CPS	189	237	201	166	166	194	213	198	203	163	206	235	191	2562
CWS		24	27	29	34	19	28	32	20	27	26	23	28	26	343	
Total	213	264	230	200	185	222	245	218	230	189	229	263	217	2905		

Data in this report is preliminary and may differ from any final report. This report is produced to ensure continuous quality improvement throughout DCF.



Table 5: Monthly Count of CPS Reports and CWS Referrals Assigned to CP&P Local Offices

County	Local Office	Type of Referral													Total	
			Apr 2021	May 2021	Jun 2021	Jul 2021	Aug 2021	Sep 2021	Oct 2021	Nov 2021	Dec 2021	Jan 2022	Feb 2022	Mar 2022		Apr 2022
MIDDLESEX	Middlesex Central	CPS	110	99	103	81	71	91	118	101	114	114	125	129	126	1382
		CWS	20	11	15	10	7	12	17	9	10	5	19	18	12	165
		Total	130	110	118	91	78	103	135	110	124	119	144	147	138	1547
	Middlesex Coastal	CPS	96	131	102	93	109	132	149	120	120	113	138	173	124	1600
		CWS	16	20	11	9	14	9	12	9	12	6	10	8	12	148
		Total	112	151	113	102	123	141	161	129	132	119	148	181	136	1748
	Middlesex West	CPS	104	142	104	95	106	127	162	106	146	109	153	171	100	1625
		CWS	18	25	14	11	10	14	14	10	6	9	19	21	14	185
		Total	122	167	118	106	116	141	176	116	152	118	172	192	114	1810
	County Totals	CPS	310	372	309	269	286	350	429	327	380	336	416	473	350	4607
		CWS	54	56	40	30	31	35	43	28	28	20	48	47	38	498
		Total	364	428	349	299	317	385	472	355	408	356	464	520	388	5105
MONMOUTH	Monmouth North	CPS	135	146	124	121	125	123	186	132	158	132	145	186	157	1870
		CWS	15	20	11	10	16	11	14	17	17	11	12	14	16	184
		Total	150	166	135	131	141	134	200	149	175	143	157	200	173	2054
	Monmouth South	CPS	131	120	116	107	109	109	120	134	108	100	114	130	110	1508
		CWS	13	10	11	11	6	7	11	11	11	17	17	12	14	151
		Total	144	130	127	118	115	116	131	145	119	117	131	142	124	1659
	County Totals	CPS	266	266	240	228	234	232	306	266	266	232	259	316	267	3378
		CWS	28	30	22	21	22	18	25	28	28	28	29	26	30	335
		Total	294	296	262	249	256	250	331	294	294	260	288	342	297	3713
MORRIS	Morris East	CPS	62	75	89	53	70	67	74	82	73	75	101	89	72	982
		CWS	14	11	7	7	4	8	6	7	12	11	5	8	11	111
		Total	76	86	96	60	74	75	80	89	85	86	106	97	83	1093
	Morris West	CPS	78	70	86	76	57	89	95	90	84	99	78	101	82	1085
		CWS	14	6	8	5	6	9	10	10	7	8	9	15	15	122
		Total	92	76	94	81	63	98	105	100	91	107	87	116	97	1207
	County Totals	CPS	140	145	175	129	127	156	169	172	157	174	179	190	154	2067
		CWS	28	17	15	12	10	17	16	17	19	19	14	23	26	233
		Total	168	162	190	141	137	173	185	189	176	193	193	213	180	2300
OCEAN	Ocean North	CPS	171	182	173	142	148	162	178	172	159	154	151	158	171	2121
		CWS	31	19	20	18	17	11	15	13	14	18	22	24	16	238
		Total	202	201	193	160	165	173	193	185	173	172	173	182	187	2359
	Ocean South	CPS	161	176	148	110	136	149	170	144	145	123	116	168	128	1874
		CWS	26	19	19	20	9	15	19	12	15	9	16	20	17	216
		Total	187	195	167	130	145	164	189	156	160	132	132	188	145	2090
County Totals	CPS	332	358	321	252	284	311	348	316	304	277	267	326	299	3995	
	CWS	57	38	39	38	26	26	34	25	29	27	38	44	33	454	
	Total	389	396	360	290	310	337	382	341	333	304	305	370	332	4449	
PASSAIC	Passaic Central	CPS	135	158	115	132	90	143	169	160	155	144	165	187	140	1893
		CWS	15	26	12	9	11	20	22	18	14	15	29	24	25	240
		Total	150	184	127	141	101	163	191	178	169	159	194	211	165	2133
	Passaic North	CPS	150	142	153	126	130	135	193	157	152	104	136	182	154	1914
		CWS	26	20	11	18	14	15	18	15	9	11	24	22	28	231
		Total	176	162	164	144	144	150	211	172	161	115	160	204	182	2145
	County Totals	CPS	285	300	268	258	220	278	362	317	307	248	301	369	294	3807
		CWS	41	46	23	27	25	35	40	33	23	26	53	46	53	471
		Total	326	346	291	285	245	313	402	350	330	274	354	415	347	4278
SALEM	Salem	CPS	67	63	59	51	41	66	71	50	49	58	59	70	48	752
		CWS	9	13	5	10	7	9	7	6	8	7	15	14	7	117
		Total	76	76	64	61	48	75	78	56	57	65	74	84	55	869
	County Totals	CPS	67	63	59	51	41	66	71	50	49	58	59	70	48	752
		CWS	9	13	5	10	7	9	7	6	8	7	15	14	7	117
		Total	76	76	64	61	48	75	78	56	57	65	74	84	55	869
SOMERSET	Somerset	CPS	127	125	114	96	85	128	133	125	101	103	132	149	103	1521
		CWS	12	28	16	12	12	3	15	5	10	9	9	16	4	151
		Total	139	153	130	108	97	131	148	130	111	112	141	165	107	1672
	County Totals	CPS	127	125	114	96	85	128	133	125	101	103	132	149	103	1521
		CWS	12	28	16	12	12	3	15	5	10	9	9	16	4	151
Total	139	153	130	108	97	131	148	130	111	112	141	165	107	1672		

Data in this report is preliminary and may differ from any final report. This report is produced to ensure continuous quality improvement throughout DCF.



Table 5: Monthly Count of CPS Reports and CWS Referrals Assigned to CP&P Local Offices

County	Local Office	Type of Referral													Total	
			Apr 2021	May 2021	Jun 2021	Jul 2021	Aug 2021	Sep 2021	Oct 2021	Nov 2021	Dec 2021	Jan 2022	Feb 2022	Mar 2022		Apr 2022
SUSSEX	Sussex	CPS	86	70	64	52	62	82	86	71	67	77	89	98	84	988
		CWS	9	8	6	10	5	8	13	14	5	7	11	9	11	116
		Total	95	78	70	62	67	90	99	85	72	84	100	107	95	1104
	County Totals	CPS	86	70	64	52	62	82	86	71	67	77	89	98	84	988
		CWS	9	8	6	10	5	8	13	14	5	7	11	9	11	116
		Total	95	78	70	62	67	90	99	85	72	84	100	107	95	1104
UNION	Union Central	CPS	67	88	70	74	65	72	87	64	82	56	78	95	90	988
		CWS	14	17	5	10	9	8	3	11	5	10	8	16	4	120
		Total	81	105	75	84	74	80	90	75	87	66	86	111	94	1108
	Union East	CPS	61	88	95	72	68	66	93	88	87	108	75	104	98	1103
		CWS	15	18	9	2	8	11	9	9	15	8	9	14	10	137
		Total	76	106	104	74	76	77	102	97	102	116	84	118	108	1240
	Union West	CPS	80	101	79	70	70	89	93	95	79	67	108	115	98	1144
		CWS	23	9	8	12	6	10	8	10	9	8	12	19	17	151
		Total	103	110	87	82	76	99	101	105	88	75	120	134	115	1295
	County Totals	CPS	208	277	244	216	203	227	273	247	248	231	261	314	286	3235
		CWS	52	44	22	24	23	29	20	30	29	26	29	49	31	408
		Total	260	321	266	240	226	256	293	277	277	257	290	363	317	3643
	WARREN	Warren	CPS	64	87	77	78	51	91	64	86	62	77	77	103	71
CWS			9	17	9	9	4	8	4	7	5	9	6	18	8	113
Total			73	104	86	87	55	99	68	93	67	86	83	121	79	1101
County Totals		CPS	64	87	77	78	51	91	64	86	62	77	77	103	71	988
		CWS	9	17	9	9	4	8	4	7	5	9	6	18	8	113
		Total	73	104	86	87	55	99	68	93	67	86	83	121	79	1101
County CPS Referral Total		CPS	4,248	4,686	4,264	3,754	3,712	4,360	5,001	4,508	4,417	4,107	4,653	5,532	4,451	57,693
County CWS Referral Total		CWS	711	690	540	527	437	524	573	506	520	484	588	675	593	7,368
County Referral Total		Total	4,959	5,376	4,804	4,281	4,149	4,884	5,574	5,014	4,937	4,591	5,241	6,207	5,044	65,061
Central Region IAIU	CPS	20	41	22	35	25	42	53	31	37	32	43	54	35	470	
	CWS	0	0	0	0	0	0	0	0	0	0	0	0	0	0	
	Total	20	41	22	35	25	42	53	31	37	32	43	54	35	470	
Metro Region IAIU	CPS	14	18	17	11	22	36	28	26	21	27	36	35	35	326	
	CWS	0	0	0	0	0	0	1	0	0	0	0	0	0	1	
	Total	14	18	17	11	22	36	29	26	21	27	36	35	35	327	
Northern Region IAIU	CPS	20	28	18	23	19	27	39	44	41	28	40	50	38	415	
	CWS	0	0	0	0	0	0	0	0	1	0	0	0	0	1	
	Total	20	28	18	23	19	27	39	44	42	28	40	50	38	416	
Southern Region IAIU	CPS	35	48	33	42	42	51	41	33	42	35	46	59	46	553	
	CWS	0	0	0	0	0	0	0	0	0	0	0	0	0	0	
	Total	35	48	33	42	42	51	41	33	42	35	46	59	46	553	
IAIU CPS Subtotal		CPS	89	135	90	111	108	156	161	134	141	122	165	198	154	1,764
IAIU CWS Subtotal		CWS	0	0	0	0	0	0	1	0	1	0	0	0	0	2
IAIU Subtotal		Total	89	135	90	111	108	156	162	134	142	122	165	198	154	1,766
County and IAIU CPS Subtotal		CPS	4,337	4,821	4,354	3,865	3,820	4,516	5,162	4,642	4,558	4,229	4,818	5,730	4,605	59,457
County and IAIU CWS Subtotal		CWS	711	690	540	527	437	524	574	506	521	484	588	675	593	7,370
Unable to Determine(1)		Total	98	94	108	89	91	83	107	82	78	84	92	102	107	1,215
Other Offices		Total	2	1	2	3	0	0	0	0	1	0	4	0	0	13
Grand Total		Total	5,148	5,606	5,004	4,484	4,348	5,123	5,843	5,230	5,158	4,797	5,502	6,507	5,305	68,055

(1) CPS Reports or CWS Referrals not assigned to an office through the Assignment Designee, but were assigned to an office for an assessment or investigation.