



## **Child Protection and Permanency**

# **Monthly Screening and Investigation Report May 2020**

Christine Norbut Beyer, MSW  
Commissioner



## Table of Contents

Table 1: NJ State Central Registry Activity: Monthly Child Abuse and Neglect Hotline Calls, Intakes and Assignments to Child Protection & Permanency (CP&P) Offices

---

Chart 1: CP&P Annual Trends in Child Protection Services (CPS) Reports and Child Welfare Services (CWS) Referrals

---

Table 2: Assignments to CP&P Offices: CPS Reports and CWS Referrals

---

Table 3: Source of CPS Reports and CWS Referrals

---

Table 4: Monthly Count of CPS Reports and CWS Referrals Assigned to Counties

---

Table 5: Monthly Count of CPS Reports and CWS Referrals Assigned to CP&P Local Offices

---

**Table 1: NJ State Central Registry Activity: Monthly Child Abuse and Neglect Hotline Calls, Intakes and Assignments to CP&P Offices<sup>1,2,7</sup>**

2019-2020	Hotline Call Activity				Intakes Recorded in NJ SPIRIT <sup>6,8</sup>												Assignments to CP&P Offices				
	Total Calls to SCR <sup>3</sup>	Abandon Calls <sup>4</sup>	Average Time to Answer (seconds)	Resulting NJS Intakes <sup>5</sup>	CPS Reports		CWS Referrals		No Action Required (NAR)		Related Information (RI)		Information & Referral (I&R)		Information Only (IO)		CPS Reports		CWS Referrals		Total
					n	%	n	%	n	%	n	%	n	%	n	%	n	%	n	%	
May 2019	15,705	1,615	120	15,810	5,853	37.0%	1,780	11.3%	229	1.4%	3,784	23.9%	1,852	11.7%	2,312	14.6%	5,853	76.7%	1,781	23.3%	7,634
June 2019	13,596	1,287	107	14,057	4,872	33.0%	1,507	10.7%	268	1.9%	3,537	25.2%	1,703	12.1%	2,168	15.4%	4,874	76.4%	1,509	23.6%	6,383
July 2019	12,135	874	73	12,821	4,277	33.4%	1,309	10.2%	267	2.1%	3,250	25.3%	1,452	11.3%	2,266	17.7%	4,277	76.6%	1,309	23.4%	5,586
August 2019	11,044	482	38	12,291	4,068	33.1%	1,303	10.6%	222	1.8%	3,113	25.3%	1,381	11.2%	2,204	17.9%	4,068	75.7%	1,306	24.3%	5,374
September 2019	13,737	991	72	14,995	5,315	35.4%	1,551	10.3%	266	1.8%	3,695	24.6%	1,790	11.9%	2,378	15.9%	5,315	77.4%	1,551	22.6%	6,866
October 2019	15,981	1,270	95	16,503	5,968	36.2%	1,923	11.7%	260	1.6%	4,039	24.5%	1,959	11.9%	2,354	14.3%	5,968	75.6%	1,926	24.4%	7,894
November 2019	12,937	1,128	92	14,799	4,991	33.7%	1,434	9.7%	205	1.4%	3,681	24.9%	1,741	11.8%	2,747	18.6%	4,991	77.7%	1,432	22.3%	6,423
December 2019	12,832	1,147	102	13,166	4,855	36.9%	1,432	10.9%	203	1.5%	3,204	24.3%	1,478	11.2%	1,994	15.1%	4,855	77.2%	1,434	22.8%	6,289
January 2020	15,893	2,070	141	15,573	5,715	36.7%	1,841	11.8%	227	1.5%	3,717	23.9%	1,976	12.7%	2,097	13.5%	5,715	75.6%	1,842	24.4%	7,557
February 2020	14,714	1,744	150	14,684	5,380	36.6%	1,625	11.1%	226	1.5%	3,605	24.6%	1,854	12.6%	1,994	13.6%	5,380	76.8%	1,624	23.2%	7,004
March 2020	12,263	1,262	111	12,398	4,171	33.6%	1,063	8.6%	199	1.6%	3,075	24.8%	1,885	15.2%	2,005	16.2%	4,172	79.7%	1,065	20.3%	5,237
April 2020	7,500	548	78	7,917	2,149	27.1%	407	5.1%	196	2.5%	1,852	23.4%	1,866	23.6%	1,447	18.3%	2,149	84.1%	407	15.9%	2,556
<b>May 2020</b>	<b>9,654</b>	<b>1,808</b>	<b>249</b>	<b>9,402</b>	<b>2,897</b>	<b>30.8%</b>	<b>537</b>	<b>5.7%</b>	<b>137</b>	<b>1.5%</b>	<b>2,342</b>	<b>24.9%</b>	<b>1,974</b>	<b>21.0%</b>	<b>1,515</b>	<b>16.1%</b>	<b>2,897</b>	<b>84.4%</b>	<b>537</b>	<b>15.6%</b>	<b>3,434</b>
	<b>12,922</b>	<b>1,248</b>	<b>110</b>	<b>13,417</b>	<b>4,655</b>	<b>34.7%</b>	<b>1,362</b>	<b>10.2%</b>	<b>223</b>	<b>1.7%</b>	<b>3,300</b>	<b>24.6%</b>	<b>1,762</b>	<b>13.1%</b>	<b>2,114</b>	<b>15.8%</b>	<b>4,655</b>	<b>77.3%</b>	<b>1,363</b>	<b>22.7%</b>	<b>6,018</b>
<b>Overall Total</b>	<b>167,991</b>	<b>16,226</b>		<b>174,416</b>	<b>60,511</b>		<b>17,712</b>		<b>2,905</b>		<b>42,894</b>		<b>22,911</b>		<b>27,481</b>		<b>60,514</b>	<b>77.3%</b>	<b>17,723</b>	<b>22.7%</b>	<b>78,237</b>

<sup>1</sup> Comes from three distinct sources: (1) the Automatic Call Distribution (ACD) phone system; which keeps a count of the number of calls and call routing; (2) Monthly NJSpirit Intakes; which record decision making on calls received by hotline screeners, and (3) NJSpirit extracts of assigned CWS Referrals and CPS Reports.

<sup>2</sup> The number of Intakes, CPS Reports, and CWS Referrals are based on an extract from NJSpirit. Data extracted by the Office of Research, Evaluation, and Reporting on **June 8, 2020** includes all Intakes, CPS Reports, and CWS Referrals received from **May 1, 2020 through May 31, 2020**.

<sup>3</sup> The number calls received through the ACD System that were directed to a screener from any call-in phone number.

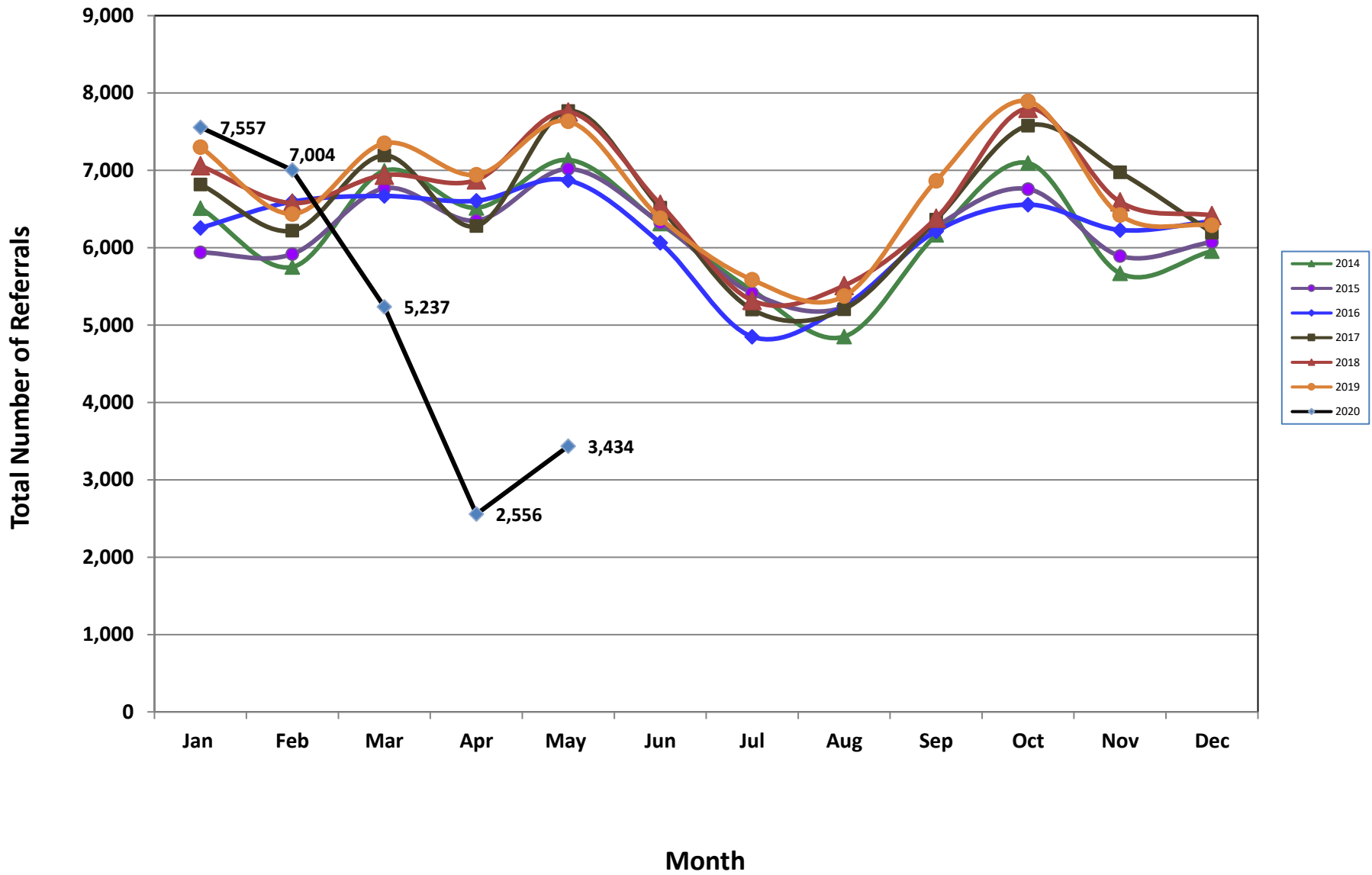
<sup>4</sup> The number of calls received through the ACD System that are abandoned either while waiting in queue or while ringing.

<sup>5</sup> The number of Intakes entered in NJSpirit from the number of calls received.

<sup>6</sup> The number of Intakes recorded in NJSpirit, by type of Intake. There is not a one-to-one relationship between an ACD call and an Intake; multiple calls to State Central Registry (SCR) may result in a single Intake, or one call may result in multiple Intakes.

<sup>7</sup> Intake: The process of documenting: a report of alleged abuse or neglect of a child (CPS); a request for services on behalf of a child, or a referral of a child for services (CWS); a call in which the caller provides additional or clarifying information about a current service case or active investigation (RI); informing a caller of, or referring a caller to, services available from other private or public sources (I&R); a call that requires no action by CP&P (NAR); or a response to a simple inquiry (IO).

### CP&P Annual Trends in CPS Reports and CWS Referrals



**Table 2: Assignments to CP&P Offices: CPS Reports and CWS Referrals<sup>1</sup>**

Intake Date <sup>3</sup>		CPS Reports <sup>2</sup>	CWS Referrals <sup>2</sup>	Total Assignments <sup>2</sup>
2015	Jan 2015	4,549	1,391	5,940
	Feb 2015	4,574	1,345	5,919
	Mar 2015	5,187	1,580	6,767
	Apr 2015	4,967	1,384	6,351
	<b>May 2015</b>	<b>5,457</b>	<b>1,561</b>	<b>7,018</b>
	Jun 2015	4,887	1,436	6,323
	Jul 2015	4,140	1,273	5,413
	Aug 2015	3,978	1,256	5,234
	Sep 2015	4,776	1,495	6,271
	Oct 2015	5,139	1,619	6,758
	Nov 2015	4,417	1,477	5,894
	Dec 2015	4,530	1,544	6,074
	<b>Total</b>	<b>56,601</b>	<b>17,361</b>	<b>73,962</b>
2016	Jan 2016	4,686	1,571	6,257
	Feb 2016	4,974	1,622	6,596
	Mar 2016	5,000	1,669	6,669
	Apr 2016	5,065	1,542	6,607
	<b>May 2016</b>	<b>5,238</b>	<b>1,633</b>	<b>6,871</b>
	Jun 2016	4,602	1,461	6,063
	Jul 2016	3,663	1,187	4,850
	Aug 2016	3,941	1,307	5,248
	Sep 2016	4,654	1,559	6,213
	Oct 2016	4,935	1,622	6,557
	Nov 2016	4,677	1,552	6,229
	Dec 2016	4,762	1,580	6,342
	<b>Total</b>	<b>56,197</b>	<b>18,305</b>	<b>74,502</b>
2017	Jan 2017	5,111	1,708	6,819
	Feb 2017	4,716	1,504	6,220
	Mar 2017	5,349	1,843	7,192
	Apr 2017	4,790	1,490	6,280
	<b>May 2017</b>	<b>5,847</b>	<b>1,919</b>	<b>7,766</b>
	Jun 2017	4,853	1,665	6,518
	Jul 2017	3,814	1,389	5,203
	Aug 2017	3,866	1,340	5,206
	Sep 2017	4,719	1,643	6,362
	Oct 2017	5,613	1,966	7,579
	Nov 2017	5,223	1,753	6,976
	Dec 2017	4,601	1,594	6,195
	<b>Total</b>	<b>58,502</b>	<b>19,814</b>	<b>78,316</b>

**Table 2: Assignments to CP&P Offices: CPS Reports and CWS Referrals<sup>1</sup>**

Intake Date <sup>3</sup>		CPS Reports <sup>2</sup>	CWS Referrals <sup>2</sup>	Total Assignments <sup>2</sup>
2018	Jan 2018	5,276	1,784	7,060
	Feb 2018	4,933	1,644	6,577
	Mar 2018	5,212	1,727	6,939
	Apr 2018	5,275	1,601	6,876
	<b>May 2018</b>	<b>5,920</b>	<b>1,836</b>	<b>7,756</b>
	Jun 2018	4,948	1,615	6,563
	Jul 2018	4,011	1,308	5,319
	Aug 2018	4,102	1,408	5,510
	Sep 2018	4,748	1,634	6,382
	Oct 2018	5,790	2,011	7,801
	Nov 2018	4,973	1,620	6,593
	Dec 2018	4,891	1,527	6,418
	<b>Total</b>	<b>60,079</b>	<b>19,715</b>	<b>79,794</b>
2019	Jan 2019	5,443	1,858	7,301
	Feb 2019	4,811	1,628	6,439
	Mar 2019	5,677	1,824	7,501
	Apr 2019	5,313	1,630	6,943
	<b>May 2019</b>	<b>5,853</b>	<b>1,781</b>	<b>7,634</b>
	June 2019	4,874	1,509	6,383
	July 2019	4,277	1,309	5,586
	Aug 2019	4,068	1,306	5,374
	Sep 2019	5,315	1,551	6,866
	Oct 2019	5,968	1,926	7,894
	Nov 2019	4,991	1,432	6,423
	Dec 2019	4,855	1,434	6,289
	<b>Total</b>	<b>61,445</b>	<b>19,188</b>	<b>80,633</b>
2020	Jan 2020	5,715	1,842	7,557
	Feb 2020	5,380	1,624	7,004
	Mar 2020	4,172	1,065	5,237
	Apr 2020	2,149	407	2,556
	<b>May 2020</b>	<b>2,897</b>	<b>537</b>	<b>3,434</b>
	<b>Total</b>	<b>20,313</b>	<b>5,475</b>	<b>25,788</b>
<b>Grand Total</b>		<b>313,137</b>	<b>99,858</b>	<b>412,995</b>

<sup>1</sup>Source of Data: NJ SPIRIT

<sup>2</sup>A CPS Report or a CWS Referral may include multiple children in a family, with one or more allegation or request for services.

In these cases, each CPS Report or CWS Referral is counted once - the CPS Report or the CWS Referral is the unit of analysis

<sup>3</sup>Prior to January 2014, the number of CPS Reports and CWS Referrals was based on the type of assignment of the CPS Report or CWS Referral. Beginning in January 2014, the number of CPS Reports and CWS Referrals is based on the number of CPS Reports and CWS



**Table 3: Source of CPS Reports and CWS Referrals**

	Source	May 2019	June 2019	July 2019	Aug 2019	Sep 2019	Oct 2019	Nov 2019	Dec 2019	Jan 2020	Feb 2020	Mar 2020	Apr 2020	May 2020		13 Month Total	
<b>CPS Reports and CWS Referrals</b>	School Staff	2,167	1,163	211	90	1,479	2,314	1,703	1,562	2,327	2,148	1,188	143	210	6%	16,705	21%
	Healthcare Provider	1,033	970	964	917	963	1,059	886	923	990	937	760	499	656	19%	11,557	15%
	Law Enforcement	1,409	1,437	1,416	1,320	1,432	1,425	1,260	1,247	1,295	1,349	1,197	792	1,086	32%	16,665	21%
	Government Agency	477	387	448	391	417	457	343	367	452	342	240	134	198	6%	4,653	6%
	Parent	525	492	549	583	534	529	425	448	509	435	395	219	281	8%	5,924	8%
	Relative/Friend/Neighbor	400	418	482	479	505	427	384	388	411	334	345	232	296	9%	5,101	7%
	Anonymous	715	629	493	544	615	674	556	508	600	603	437	222	284	8%	6,880	9%
	CP&P	102	104	126	129	102	110	82	89	106	74	67	28	31	1%	1,150	1%
	Court/Legal	176	158	189	223	180	207	160	158	210	162	104	40	59	2%	2,026	3%
	Community Group/Individual	257	242	279	268	257	310	287	227	317	279	199	111	143	4%	3,176	4%
	Facility Staff (incl Correctional Facility)	81	76	88	92	74	79	67	83	79	93	40	21	41	1%	914	1%
	Child (Self)	37	37	50	47	45	34	27	37	28	21	25	7	17	0%	412	1%
	Other	244	248	277	272	249	250	235	242	213	210	227	105	130	4%	2,902	4%
	Daycare/Babysitter	11	22	14	19	14	19	8	10	20	17	13	3	2	0%	172	0%
<b>Total</b>		<b>7,634</b>	<b>6,383</b>	<b>6,383</b>	<b>6,383</b>	<b>6,866</b>	<b>7,894</b>	<b>6,423</b>	<b>6,289</b>	<b>7,557</b>	<b>7,004</b>	<b>5,237</b>	<b>2,556</b>	<b>3,434</b>		<b>78,237</b>	

**Table 4: Monthly Count of CPS Reports and CWS Referrals Assigned to Counties**

County														Average Number of Assignments Last 13 Months	Mar 20 to May 20 Numerical Difference
	May 2019	June 2019	July 2019	Aug 2019	Sep 2019	Oct 2019	Nov 2019	Dec 2019	Jan 2020	Feb 2020	Mar 2020	Apr 2020	May 2020		
Atlantic	318	279	235	235	282	302	258	261	292	298	244	121	161	253	119%
Bergen	486	376	273	285	402	471	423	375	457	418	281	145	189	352	-92
Burlington	351	288	262	264	352	385	305	285	383	368	256	133	181	293	-75
Camden	588	484	442	422	572	625	523	508	603	581	437	216	305	485	-132
Cape May	70	82	96	80	112	105	78	78	85	58	70	33	50	77	-20
Cumberland	219	214	187	158	206	256	216	221	238	216	171	96	116	193	-55
Essex	851	693	604	622	713	848	703	651	790	735	525	249	364	642	-161
Gloucester	341	265	250	232	259	279	271	266	285	297	221	111	160	249	-61
Hudson	510	422	346	307	400	535	437	415	558	449	347	137	226	391	-121
Hunterdon	67	64	42	48	74	60	63	66	67	48	39	22	30	53	-9
Mercer	292	298	264	265	276	337	290	267	344	279	210	106	144	259	-66
Middlesex	505	412	337	357	489	558	426	488	580	475	405	205	231	421	-174
Monmouth	424	376	295	287	378	437	350	349	411	381	301	166	196	335	-105
Morris	303	200	181	187	266	255	226	212	264	273	194	85	124	213	-70
Ocean	459	386	385	337	428	525	387	406	482	446	355	177	257	387	-98
Passaic	535	431	356	327	443	519	390	409	456	460	353	143	213	387	-140
Salem	77	57	83	85	92	98	78	69	79	82	75	35	44	73	-31
Somerset	167	155	155	114	180	202	155	146	197	189	126	66	92	150	-34
Sussex	114	104	83	107	125	129	91	104	114	116	73	47	48	97	-25
Union	398	317	276	252	321	400	345	327	383	383	246	137	147	302	-99
Warren	104	102	82	88	97	96	93	82	98	101	65	54	50	86	-15
<b>County Subtotals</b>	<b>7,179</b>	<b>6,005</b>	<b>5,234</b>	<b>5,059</b>	<b>6,467</b>	<b>7,422</b>	<b>6,108</b>	<b>5,985</b>	<b>7,166</b>	<b>6,653</b>	<b>4,994</b>	<b>2,484</b>	<b>3,328</b>	<b>5,699</b>	<b>-1,666</b>
Central Region IAIU	82	57	58	41	60	70	49	48	67	64	34	10	6	50	-28
Metro Region IAIU	64	41	36	42	43	80	45	41	46	69	33	3	11	43	-22
Northern Region IAIU	89	64	53	37	68	77	45	45	59	42	44	6	12	49	-32
Southern Region IAIU	90	69	66	57	83	75	59	62	82	61	51	12	18	60	-33
<b>IAIU Subtotals</b>	<b>325</b>	<b>231</b>	<b>213</b>	<b>177</b>	<b>254</b>	<b>302</b>	<b>198</b>	<b>196</b>	<b>254</b>	<b>236</b>	<b>162</b>	<b>31</b>	<b>47</b>	<b>202</b>	<b>-115</b>
<b>Unable to Determine<sup>1</sup></b>	<b>127</b>	<b>147</b>	<b>138</b>	<b>138</b>	<b>145</b>	<b>170</b>	<b>117</b>	<b>108</b>	<b>135</b>	<b>113</b>	<b>79</b>	<b>39</b>	<b>59</b>	<b>117</b>	<b>-20</b>
<b>Other Offices</b>	<b>3</b>	<b>0</b>	<b>1</b>	<b>0</b>	<b>0</b>	<b>0</b>	<b>0</b>	<b>0</b>	<b>2</b>	<b>2</b>	<b>2</b>	<b>2</b>	<b>0</b>	<b>1</b>	<b>-2</b>
<b>Grand Total</b>	<b>7,634</b>	<b>6,383</b>	<b>5,586</b>	<b>5,374</b>	<b>6,866</b>	<b>7,894</b>	<b>6,423</b>	<b>6,289</b>	<b>7,557</b>	<b>7,004</b>	<b>5,237</b>	<b>2,556</b>	<b>3,434</b>	<b>6,018</b>	<b>-1803</b>

<sup>1</sup>CPS Reports or CWS Referrals not assigned to an office through the Assignment Designee, but were assigned to an office for an assessment or investigation.



**Table 5: Monthly Count of CPS Reports and CWS Referrals Assigned to CP&P Local Offices**

County	Local Office	Type of Referral														Total
			May 2019	June 2019	July 2019	Aug 2019	Sep 2019	Oct 2019	Nov 2019	Dec 2019	Jan 2020	Feb 2020	Mar 2020	Apr 2020	May 2020	
ATLANTIC	Atlantic East	CPS	150	126	110	102	127	134	117	133	120	116	115	55	70	1,475
		CWS	41	34	34	30	46	38	26	31	33	55	30	9	16	423
		<b>Total</b>	<b>191</b>	<b>160</b>	<b>144</b>	<b>132</b>	<b>173</b>	<b>172</b>	<b>143</b>	<b>164</b>	<b>153</b>	<b>171</b>	<b>145</b>	<b>64</b>	<b>86</b>	<b>1,898</b>
	Atlantic West	CPS	111	86	69	77	76	86	99	79	101	95	82	50	64	1,075
		CWS	16	33	22	26	33	44	16	18	38	32	17	7	11	313
		<b>Total</b>	<b>127</b>	<b>119</b>	<b>91</b>	<b>103</b>	<b>109</b>	<b>130</b>	<b>115</b>	<b>97</b>	<b>139</b>	<b>127</b>	<b>99</b>	<b>57</b>	<b>75</b>	<b>1,388</b>
	County Totals	CPS	261	212	179	179	203	220	216	212	221	211	197	105	134	2,550
		CWS	57	67	56	56	79	82	42	49	71	87	47	16	27	736
		<b>Total</b>	<b>318</b>	<b>279</b>	<b>235</b>	<b>235</b>	<b>282</b>	<b>302</b>	<b>258</b>	<b>261</b>	<b>292</b>	<b>298</b>	<b>244</b>	<b>121</b>	<b>161</b>	<b>3,286</b>
BERGEN	Bergen Central	CPS	160	122	91	98	131	150	137	102	145	135	81	55	66	1,473
		CWS	64	36	23	31	46	57	47	51	57	47	24	12	13	508
		<b>Total</b>	<b>224</b>	<b>158</b>	<b>114</b>	<b>129</b>	<b>177</b>	<b>207</b>	<b>184</b>	<b>153</b>	<b>202</b>	<b>182</b>	<b>105</b>	<b>67</b>	<b>79</b>	<b>1,981</b>
	Bergen South	CPS	184	155	121	117	166	192	174	171	182	179	126	67	90	1,924
		CWS	78	63	38	39	59	72	65	51	73	57	50	11	20	676
		<b>Total</b>	<b>262</b>	<b>218</b>	<b>159</b>	<b>156</b>	<b>225</b>	<b>264</b>	<b>239</b>	<b>222</b>	<b>255</b>	<b>236</b>	<b>176</b>	<b>78</b>	<b>110</b>	<b>2,600</b>
	County Totals	CPS	344	277	212	215	297	342	311	273	327	314	207	122	156	3,397
		CWS	142	99	61	70	105	129	112	102	130	104	74	23	33	1,184
		<b>Total</b>	<b>486</b>	<b>376</b>	<b>273</b>	<b>285</b>	<b>402</b>	<b>471</b>	<b>423</b>	<b>375</b>	<b>457</b>	<b>418</b>	<b>281</b>	<b>145</b>	<b>189</b>	<b>4,581</b>
BURLINGTON	Burlington East	CPS	119	117	127	108	126	145	114	109	147	142	99	55	74	1,482
		CWS	45	34	21	38	55	39	44	48	50	40	22	12	17	465
		<b>Total</b>	<b>164</b>	<b>151</b>	<b>148</b>	<b>146</b>	<b>181</b>	<b>184</b>	<b>158</b>	<b>157</b>	<b>197</b>	<b>182</b>	<b>121</b>	<b>67</b>	<b>91</b>	<b>1,947</b>
	Burlington West	CPS	137	96	85	92	133	153	113	96	143	141	106	51	76	1,422
		CWS	50	41	29	26	38	48	34	32	43	45	29	15	14	444
		<b>Total</b>	<b>187</b>	<b>137</b>	<b>114</b>	<b>118</b>	<b>171</b>	<b>201</b>	<b>147</b>	<b>128</b>	<b>186</b>	<b>186</b>	<b>135</b>	<b>66</b>	<b>90</b>	<b>1,866</b>
	County Totals	CPS	256	213	212	200	259	298	227	205	290	283	205	106	150	2,904
		CWS	95	75	50	64	93	87	78	80	93	85	51	27	31	909
		<b>Total</b>	<b>351</b>	<b>288</b>	<b>262</b>	<b>264</b>	<b>352</b>	<b>385</b>	<b>305</b>	<b>285</b>	<b>383</b>	<b>368</b>	<b>256</b>	<b>133</b>	<b>181</b>	<b>3,813</b>
CAMDEN	Camden Central	CPS	104	112	87	106	127	122	100	118	112	119	99	40	68	1,314
		CWS	33	27	16	22	27	40	28	24	43	29	14	12	11	326
		<b>Total</b>	<b>137</b>	<b>139</b>	<b>103</b>	<b>128</b>	<b>154</b>	<b>162</b>	<b>128</b>	<b>142</b>	<b>155</b>	<b>148</b>	<b>113</b>	<b>52</b>	<b>79</b>	<b>1,640</b>
	Camden East	CPS	122	91	83	70	103	111	114	100	94	102	82	45	54	1,171
		CWS	34	27	36	15	34	30	31	30	44	32	16	7	8	344
		<b>Total</b>	<b>156</b>	<b>118</b>	<b>119</b>	<b>85</b>	<b>137</b>	<b>141</b>	<b>145</b>	<b>130</b>	<b>138</b>	<b>134</b>	<b>98</b>	<b>52</b>	<b>62</b>	<b>1,515</b>
	Camden North	CPS	117	93	77	84	111	135	101	84	119	117	96	39	56	1,229
		CWS	34	26	32	25	47	40	37	26	31	28	26	9	15	376
		<b>Total</b>	<b>151</b>	<b>119</b>	<b>109</b>	<b>109</b>	<b>158</b>	<b>175</b>	<b>138</b>	<b>110</b>	<b>150</b>	<b>145</b>	<b>122</b>	<b>48</b>	<b>71</b>	<b>1,605</b>
	Camden South	CPS	118	77	83	68	91	113	88	96	125	122	82	54	73	1,190
		CWS	26	31	28	32	32	34	24	30	35	32	22	10	20	356
		<b>Total</b>	<b>144</b>	<b>108</b>	<b>111</b>	<b>100</b>	<b>123</b>	<b>147</b>	<b>112</b>	<b>126</b>	<b>160</b>	<b>154</b>	<b>104</b>	<b>64</b>	<b>93</b>	<b>1,546</b>
	County Totals	CPS	461	373	330	328	432	481	403	398	450	460	359	178	251	4,904
		CWS	127	111	112	94	140	144	120	110	153	121	78	38	54	1,402
		<b>Total</b>	<b>588</b>	<b>484</b>	<b>442</b>	<b>422</b>	<b>572</b>	<b>625</b>	<b>523</b>	<b>508</b>	<b>603</b>	<b>581</b>	<b>437</b>	<b>216</b>	<b>305</b>	<b>6,306</b>
CAPE MAY	Cape May	CPS	57	63	72	67	87	75	63	62	68	42	56	29	37	778
		CWS	13	19	24	13	25	30	15	16	17	16	14	4	13	219
		<b>Total</b>	<b>70</b>	<b>82</b>	<b>96</b>	<b>80</b>	<b>112</b>	<b>105</b>	<b>78</b>	<b>78</b>	<b>85</b>	<b>58</b>	<b>70</b>	<b>33</b>	<b>50</b>	<b>997</b>
	County Totals	CPS	57	63	72	67	87	75	63	62	68	42	56	29	37	778
		CWS	13	19	24	13	25	30	15	16	17	16	14	4	13	219
		<b>Total</b>	<b>70</b>	<b>82</b>	<b>96</b>	<b>80</b>	<b>112</b>	<b>105</b>	<b>78</b>	<b>78</b>	<b>85</b>	<b>58</b>	<b>70</b>	<b>33</b>	<b>50</b>	<b>997</b>
CUMBERLAND	Cumberland East	CPS	49	50	45	50	51	59	47	61	57	52	44	24	40	629
		CWS	25	24	12	13	9	16	19	9	11	12	11	10	8	179
		<b>Total</b>	<b>74</b>	<b>74</b>	<b>57</b>	<b>63</b>	<b>60</b>	<b>75</b>	<b>66</b>	<b>70</b>	<b>68</b>	<b>64</b>	<b>55</b>	<b>34</b>	<b>48</b>	<b>808</b>
	Cumberland West	CPS	116	118	101	75	118	139	119	126	141	121	91	53	56	1,374
		CWS	29	22	29	20	28	42	31	25	29	31	25	9	12	332
		<b>Total</b>	<b>145</b>	<b>140</b>	<b>130</b>	<b>95</b>	<b>146</b>	<b>181</b>	<b>150</b>	<b>151</b>	<b>170</b>	<b>152</b>	<b>116</b>	<b>62</b>	<b>68</b>	<b>1,706</b>
	County Totals	CPS	165	168	146	125	169	198	166	187	198	173	135	77	96	2,003
		CWS	54	46	41	33	37	58	50	34	40	43	36	19	20	511
		<b>Total</b>	<b>219</b>	<b>214</b>	<b>187</b>	<b>158</b>	<b>206</b>	<b>256</b>	<b>216</b>	<b>221</b>	<b>238</b>	<b>216</b>	<b>171</b>	<b>96</b>	<b>116</b>	<b>2,514</b>

**Table 5: Monthly Count of CPS Reports and CWS Referrals Assigned to CP&P Local Offices**

County	Local Office	Type of Referral														Total
			May 2019	June 2019	July 2019	Aug 2019	Sep 2019	Oct 2019	Nov 2019	Dec 2019	Jan 2020	Feb 2020	Mar 2020	Apr 2020	May 2020	
ESSEX	Essex Central	CPS	102	93	94	88	111	121	96	98	106	99	71	58	60	1,197
		CWS	34	36	36	25	32	48	32	28	35	36	21	6	8	377
		<b>Total</b>	<b>136</b>	<b>129</b>	<b>130</b>	<b>113</b>	<b>143</b>	<b>169</b>	<b>128</b>	<b>126</b>	<b>141</b>	<b>135</b>	<b>92</b>	<b>64</b>	<b>68</b>	<b>1,574</b>
	Essex North	CPS	85	62	53	58	65	79	75	63	78	92	50	24	28	812
		CWS	29	32	17	31	27	24	23	22	30	26	19	2	18	300
		<b>Total</b>	<b>114</b>	<b>94</b>	<b>70</b>	<b>89</b>	<b>92</b>	<b>103</b>	<b>98</b>	<b>85</b>	<b>108</b>	<b>118</b>	<b>69</b>	<b>26</b>	<b>46</b>	<b>1,112</b>
	Essex South	CPS	94	71	48	46	66	66	83	71	87	64	65	22	32	815
		CWS	32	23	15	26	20	35	24	21	25	24	14	7	7	273
		<b>Total</b>	<b>126</b>	<b>94</b>	<b>63</b>	<b>72</b>	<b>86</b>	<b>101</b>	<b>107</b>	<b>92</b>	<b>112</b>	<b>88</b>	<b>79</b>	<b>29</b>	<b>39</b>	<b>1088</b>
	Newark Center City	CPS	128	85	86	95	101	118	83	93	121	114	74	33	59	1190
		CWS	34	31	27	23	36	35	30	35	29	33	17	8	12	350
		<b>Total</b>	<b>162</b>	<b>116</b>	<b>113</b>	<b>118</b>	<b>137</b>	<b>153</b>	<b>113</b>	<b>128</b>	<b>150</b>	<b>147</b>	<b>91</b>	<b>41</b>	<b>71</b>	<b>1540</b>
	Newark Northeast	CPS	118	89	84	77	94	116	98	74	97	95	77	38	47	1104
		CWS	29	25	29	22	28	35	27	19	35	25	19	7	5	305
		<b>Total</b>	<b>147</b>	<b>114</b>	<b>113</b>	<b>99</b>	<b>122</b>	<b>151</b>	<b>125</b>	<b>93</b>	<b>132</b>	<b>120</b>	<b>96</b>	<b>45</b>	<b>52</b>	<b>1409</b>
	Newark South	CPS	121	118	85	90	104	134	107	95	120	94	74	38	69	1249
		CWS	45	28	30	41	29	37	25	32	27	33	24	6	19	376
		<b>Total</b>	<b>166</b>	<b>146</b>	<b>115</b>	<b>131</b>	<b>133</b>	<b>171</b>	<b>132</b>	<b>127</b>	<b>147</b>	<b>127</b>	<b>98</b>	<b>44</b>	<b>88</b>	<b>1625</b>
	County Totals	CPS	648	518	450	454	541	634	542	494	609	558	411	213	295	6367
		CWS	203	175	154	168	172	214	161	157	181	177	114	36	69	1981
		<b>Total</b>	<b>851</b>	<b>693</b>	<b>604</b>	<b>622</b>	<b>713</b>	<b>848</b>	<b>703</b>	<b>651</b>	<b>790</b>	<b>735</b>	<b>525</b>	<b>249</b>	<b>364</b>	<b>8348</b>
GLOUCESTER	Gloucester East	CPS	134	114	80	92	98	109	94	102	111	110	90	47	67	1248
		CWS	33	23	26	21	19	25	28	24	26	32	16	9	7	289
		<b>Total</b>	<b>167</b>	<b>137</b>	<b>106</b>	<b>113</b>	<b>117</b>	<b>134</b>	<b>122</b>	<b>126</b>	<b>137</b>	<b>142</b>	<b>106</b>	<b>56</b>	<b>74</b>	<b>1537</b>
	Gloucester West	CPS	139	105	115	85	120	114	122	107	116	117	88	45	76	1349
		CWS	35	23	29	34	22	31	27	33	32	38	27	10	10	351
		<b>Total</b>	<b>174</b>	<b>128</b>	<b>144</b>	<b>119</b>	<b>142</b>	<b>145</b>	<b>149</b>	<b>140</b>	<b>148</b>	<b>155</b>	<b>115</b>	<b>55</b>	<b>86</b>	<b>1700</b>
	County Totals	CPS	273	219	195	177	218	223	216	209	227	227	178	92	143	2597
		CWS	68	46	55	55	41	56	55	57	58	70	43	19	17	640
		<b>Total</b>	<b>341</b>	<b>265</b>	<b>250</b>	<b>232</b>	<b>259</b>	<b>279</b>	<b>271</b>	<b>266</b>	<b>285</b>	<b>297</b>	<b>221</b>	<b>111</b>	<b>160</b>	<b>3237</b>
HUDSON	Hudson Central	CPS	116	101	102	94	90	122	112	103	141	99	88	37	69	1274
		CWS	20	19	32	22	35	41	37	26	48	37	32	12	12	373
		<b>Total</b>	<b>136</b>	<b>120</b>	<b>134</b>	<b>116</b>	<b>125</b>	<b>163</b>	<b>149</b>	<b>129</b>	<b>189</b>	<b>136</b>	<b>120</b>	<b>49</b>	<b>81</b>	<b>1647</b>
	Hudson North	CPS	95	65	57	36	78	97	82	67	85	85	66	23	42	878
		CWS	33	26	21	22	20	29	26	23	33	25	15	10	13	296
		<b>Total</b>	<b>128</b>	<b>91</b>	<b>78</b>	<b>58</b>	<b>98</b>	<b>126</b>	<b>108</b>	<b>90</b>	<b>118</b>	<b>110</b>	<b>81</b>	<b>33</b>	<b>55</b>	<b>1174</b>
	Hudson South	CPS	63	51	37	45	46	65	50	49	77	62	44	11	31	631
		CWS	44	36	14	14	13	25	13	19	27	13	12	5	8	243
		<b>Total</b>	<b>107</b>	<b>87</b>	<b>51</b>	<b>59</b>	<b>59</b>	<b>90</b>	<b>63</b>	<b>68</b>	<b>104</b>	<b>75</b>	<b>56</b>	<b>16</b>	<b>39</b>	<b>874</b>
	Hudson West	CPS	105	102	58	53	86	110	87	101	108	100	65	34	45	1054
		CWS	34	22	25	21	32	46	30	27	39	28	25	5	6	340
		<b>Total</b>	<b>139</b>	<b>124</b>	<b>83</b>	<b>74</b>	<b>118</b>	<b>156</b>	<b>117</b>	<b>128</b>	<b>147</b>	<b>128</b>	<b>90</b>	<b>39</b>	<b>51</b>	<b>1394</b>
	County Totals	CPS	379	319	254	228	300	394	331	320	411	346	263	105	187	3837
		CWS	131	103	92	79	100	141	106	95	147	103	84	32	39	1252
		<b>Total</b>	<b>510</b>	<b>422</b>	<b>346</b>	<b>307</b>	<b>400</b>	<b>535</b>	<b>437</b>	<b>415</b>	<b>558</b>	<b>449</b>	<b>347</b>	<b>137</b>	<b>226</b>	<b>5089</b>
HUNTERDON	Hunterdon	CPS	53	47	31	33	56	46	45	51	48	37	30	20	27	524
		CWS	14	17	11	15	18	14	18	15	19	11	9	2	3	166
		<b>Total</b>	<b>67</b>	<b>64</b>	<b>42</b>	<b>48</b>	<b>74</b>	<b>60</b>	<b>63</b>	<b>66</b>	<b>67</b>	<b>48</b>	<b>39</b>	<b>22</b>	<b>30</b>	<b>690</b>
	County Totals	CPS	53	47	31	33	56	46	45	51	48	37	30	20	27	524
		CWS	14	17	11	15	18	14	18	15	19	11	9	2	3	166
<b>Total</b>	<b>67</b>	<b>64</b>	<b>42</b>	<b>48</b>	<b>74</b>	<b>60</b>	<b>63</b>	<b>66</b>	<b>67</b>	<b>48</b>	<b>39</b>	<b>22</b>	<b>30</b>	<b>690</b>		
MERCER	Mercer North	CPS	114	95	81	90	113	100	111	106	120	108	89	45	50	1222
		CWS	45	46	45	24	30	52	27	36	30	41	17	14	16	423
		<b>Total</b>	<b>159</b>	<b>141</b>	<b>126</b>	<b>114</b>	<b>143</b>	<b>152</b>	<b>138</b>	<b>142</b>	<b>150</b>	<b>149</b>	<b>106</b>	<b>59</b>	<b>66</b>	<b>1645</b>
	Mercer South	CPS	97	122	112	116	107	140	108	102	144	102	85	36	65	1336
		CWS	36	35	26	35	26	45	44	23	50	28	19	11	13	391
		<b>Total</b>	<b>133</b>	<b>157</b>	<b>138</b>	<b>151</b>	<b>133</b>	<b>185</b>	<b>152</b>	<b>125</b>	<b>194</b>	<b>130</b>	<b>104</b>	<b>47</b>	<b>78</b>	<b>1727</b>
	County Totals	CPS	211	217	193	206	220	240	219	208	264	210	174	81	115	2558
CWS		81	81	71	59	56	97	71	59	80	69	36	25	29	814	
<b>Total</b>		<b>292</b>	<b>298</b>	<b>264</b>	<b>265</b>	<b>276</b>	<b>337</b>	<b>290</b>	<b>267</b>	<b>344</b>	<b>279</b>	<b>210</b>	<b>106</b>	<b>144</b>	<b>3372</b>	

**Table 5: Monthly Count of CPS Reports and CWS Referrals Assigned to CP&P Local Offices**

County	Local Office	Type of Referral														Total	
			May 2019	June 2019	July 2019	Aug 2019	Sep 2019	Oct 2019	Nov 2019	Dec 2019	Jan 2020	Feb 2020	Mar 2020	Apr 2020	May 2020		
MIDDLESEX	Middlesex Central	CPS	110	85	83	77	103	129	103	103	139	109	94	64	62	1261	
		CWS	37	23	25	24	26	30	27	25	36	31	23	10	6	323	
		<b>Total</b>	<b>147</b>	<b>108</b>	<b>108</b>	<b>101</b>	<b>129</b>	<b>159</b>	<b>130</b>	<b>128</b>	<b>175</b>	<b>140</b>	<b>117</b>	<b>74</b>	<b>68</b>	<b>1584</b>	
	Middlesex Coastal	CPS	149	113	88	115	136	146	115	146	160	135	131	54	69	1557	
		CWS	39	37	26	32	37	49	43	35	41	32	35	14	12	432	
		<b>Total</b>	<b>188</b>	<b>150</b>	<b>114</b>	<b>147</b>	<b>173</b>	<b>195</b>	<b>158</b>	<b>181</b>	<b>201</b>	<b>167</b>	<b>166</b>	<b>68</b>	<b>81</b>	<b>1989</b>	
	Middlesex West	CPS	125	110	80	76	136	145	121	139	151	125	97	58	75	1438	
		CWS	45	44	35	33	51	59	17	40	53	43	25	5	7	457	
		<b>Total</b>	<b>170</b>	<b>154</b>	<b>115</b>	<b>109</b>	<b>187</b>	<b>204</b>	<b>138</b>	<b>179</b>	<b>204</b>	<b>168</b>	<b>122</b>	<b>63</b>	<b>82</b>	<b>1895</b>	
	County Totals	CPS	384	308	251	268	375	420	339	388	450	369	322	176	206	4256	
		CWS	121	104	86	89	114	138	87	100	130	106	83	29	25	1212	
		<b>Total</b>	<b>505</b>	<b>412</b>	<b>337</b>	<b>357</b>	<b>489</b>	<b>558</b>	<b>426</b>	<b>488</b>	<b>580</b>	<b>475</b>	<b>405</b>	<b>205</b>	<b>231</b>	<b>5468</b>	
MONMOUTH	Monmouth North	CPS	203	142	119	120	172	182	168	146	171	154	134	84	98	1893	
		CWS	63	55	42	39	37	56	50	51	63	42	37	10	18	563	
		<b>Total</b>	<b>266</b>	<b>197</b>	<b>161</b>	<b>159</b>	<b>209</b>	<b>238</b>	<b>218</b>	<b>197</b>	<b>234</b>	<b>196</b>	<b>171</b>	<b>94</b>	<b>116</b>	<b>2456</b>	
	Monmouth South	CPS	118	136	110	101	127	152	101	123	124	138	110	58	71	1469	
		CWS	40	43	24	27	42	47	31	29	53	47	20	14	9	426	
		<b>Total</b>	<b>158</b>	<b>179</b>	<b>134</b>	<b>128</b>	<b>169</b>	<b>199</b>	<b>132</b>	<b>152</b>	<b>177</b>	<b>185</b>	<b>130</b>	<b>72</b>	<b>80</b>	<b>1895</b>	
	County Totals	CPS	321	278	229	221	299	334	269	269	295	292	244	142	169	3362	
		CWS	103	98	66	66	79	103	81	80	116	89	57	24	27	989	
		<b>Total</b>	<b>424</b>	<b>376</b>	<b>295</b>	<b>287</b>	<b>378</b>	<b>437</b>	<b>350</b>	<b>349</b>	<b>411</b>	<b>381</b>	<b>301</b>	<b>166</b>	<b>196</b>	<b>4351</b>	
	MORRIS	Morris East	CPS	107	69	63	65	84	85	91	71	94	85	75	35	70	994
			CWS	36	16	21	16	33	36	33	25	36	42	19	8	15	336
			<b>Total</b>	<b>143</b>	<b>85</b>	<b>84</b>	<b>81</b>	<b>117</b>	<b>121</b>	<b>124</b>	<b>96</b>	<b>130</b>	<b>127</b>	<b>94</b>	<b>43</b>	<b>85</b>	<b>1330</b>
Morris West		CPS	125	87	80	72	116	99	78	89	101	115	75	39	34	1110	
		CWS	35	28	17	34	33	35	24	27	33	31	25	3	5	330	
		<b>Total</b>	<b>160</b>	<b>115</b>	<b>97</b>	<b>106</b>	<b>149</b>	<b>134</b>	<b>102</b>	<b>116</b>	<b>134</b>	<b>146</b>	<b>100</b>	<b>42</b>	<b>39</b>	<b>1440</b>	
County Totals		CPS	232	156	143	137	200	184	169	160	195	200	150	74	104	2104	
		CWS	71	44	38	50	66	71	57	52	69	73	44	11	20	666	
		<b>Total</b>	<b>303</b>	<b>200</b>	<b>181</b>	<b>187</b>	<b>266</b>	<b>255</b>	<b>226</b>	<b>212</b>	<b>264</b>	<b>273</b>	<b>194</b>	<b>85</b>	<b>124</b>	<b>2770</b>	
OCEAN		Ocean North	CPS	219	148	149	134	189	207	158	189	197	196	150	81	133	2150
			CWS	63	40	48	41	55	85	36	45	67	47	37	8	17	589
			<b>Total</b>	<b>282</b>	<b>188</b>	<b>197</b>	<b>175</b>	<b>244</b>	<b>292</b>	<b>194</b>	<b>234</b>	<b>264</b>	<b>243</b>	<b>187</b>	<b>89</b>	<b>150</b>	<b>2739</b>
	Ocean South	CPS	140	157	152	121	146	174	152	134	173	168	131	73	95	1816	
		CWS	37	41	36	41	38	59	41	38	45	35	37	15	12	475	
		<b>Total</b>	<b>177</b>	<b>198</b>	<b>188</b>	<b>162</b>	<b>184</b>	<b>233</b>	<b>193</b>	<b>172</b>	<b>218</b>	<b>203</b>	<b>168</b>	<b>88</b>	<b>107</b>	<b>2291</b>	
	County Totals	CPS	359	305	301	255	335	381	310	323	370	364	281	154	228	3966	
		CWS	100	81	84	82	93	144	77	83	112	82	74	23	29	1064	
		<b>Total</b>	<b>459</b>	<b>386</b>	<b>385</b>	<b>337</b>	<b>428</b>	<b>525</b>	<b>387</b>	<b>406</b>	<b>482</b>	<b>446</b>	<b>355</b>	<b>177</b>	<b>257</b>	<b>5030</b>	
	PASSAIC	Passaic Central	CPS	198	157	132	119	183	205	153	140	172	180	154	55	87	1935
			CWS	79	55	35	36	65	73	50	64	66	63	44	17	24	671
			<b>Total</b>	<b>277</b>	<b>212</b>	<b>167</b>	<b>155</b>	<b>248</b>	<b>278</b>	<b>203</b>	<b>204</b>	<b>238</b>	<b>243</b>	<b>198</b>	<b>72</b>	<b>111</b>	<b>2606</b>
Passaic North		CPS	188	160	139	121	154	182	141	151	149	160	124	60	84	1813	
		CWS	70	59	50	51	41	59	46	54	69	57	31	11	18	616	
		<b>Total</b>	<b>258</b>	<b>219</b>	<b>189</b>	<b>172</b>	<b>195</b>	<b>241</b>	<b>187</b>	<b>205</b>	<b>218</b>	<b>217</b>	<b>155</b>	<b>71</b>	<b>102</b>	<b>2429</b>	
County Totals		CPS	386	317	271	240	337	387	294	291	321	340	278	115	171	3748	
		CWS	149	114	85	87	106	132	96	118	135	120	75	28	42	1287	
		<b>Total</b>	<b>535</b>	<b>431</b>	<b>356</b>	<b>327</b>	<b>443</b>	<b>519</b>	<b>390</b>	<b>409</b>	<b>456</b>	<b>460</b>	<b>353</b>	<b>143</b>	<b>213</b>	<b>5035</b>	
SALEM		Salem	CPS	63	40	63	62	74	82	71	51	58	58	64	31	37	754
			CWS	14	17	20	23	18	16	7	18	21	24	11	4	7	200
			<b>Total</b>	<b>77</b>	<b>57</b>	<b>83</b>	<b>85</b>	<b>92</b>	<b>98</b>	<b>78</b>	<b>69</b>	<b>79</b>	<b>82</b>	<b>75</b>	<b>35</b>	<b>44</b>	<b>954</b>
	County Totals	CPS	63	40	63	62	74	82	71	51	58	58	64	31	37	754	
		CWS	14	17	20	23	18	16	7	18	21	24	11	4	7	200	
		<b>Total</b>	<b>77</b>	<b>57</b>	<b>83</b>	<b>85</b>	<b>92</b>	<b>98</b>	<b>78</b>	<b>69</b>	<b>79</b>	<b>82</b>	<b>75</b>	<b>35</b>	<b>44</b>	<b>954</b>	
SOMERSET	Somerset	CPS	128	121	117	84	140	158	124	115	150	151	103	57	78	1526	
		CWS	39	34	38	30	40	44	31	31	47	38	23	9	14	418	
		<b>Total</b>	<b>167</b>	<b>155</b>	<b>155</b>	<b>114</b>	<b>180</b>	<b>202</b>	<b>155</b>	<b>146</b>	<b>197</b>	<b>189</b>	<b>126</b>	<b>66</b>	<b>92</b>	<b>1944</b>	
	County Totals	CPS	128	121	117	84	140	158	124	115	150	151	103	57	78	1526	
		CWS	39	34	38	30	40	44	31	31	47	38	23	9	14	418	
		<b>Total</b>	<b>167</b>	<b>155</b>	<b>155</b>	<b>114</b>	<b>180</b>	<b>202</b>	<b>155</b>	<b>146</b>	<b>197</b>	<b>189</b>	<b>126</b>	<b>66</b>	<b>92</b>	<b>1944</b>	

**Table 5: Monthly Count of CPS Reports and CWS Referrals Assigned to CP&P Local Offices**

County	Local Office	Type of Referral														Total
			May 2019	June 2019	July 2019	Aug 2019	Sep 2019	Oct 2019	Nov 2019	Dec 2019	Jan 2020	Feb 2020	Mar 2020	Apr 2020	May 2020	
SUSSEX	Sussex	CPS	81	77	64	84	104	97	71	74	85	93	55	41	38	964
		CWS	33	27	19	23	21	32	20	30	29	23	18	6	10	291
		<b>Total</b>	<b>114</b>	<b>104</b>	<b>83</b>	<b>107</b>	<b>125</b>	<b>129</b>	<b>91</b>	<b>104</b>	<b>114</b>	<b>116</b>	<b>73</b>	<b>47</b>	<b>48</b>	<b>1255</b>
	County Totals	CPS	81	77	64	84	104	97	71	74	85	93	55	41	38	964
		CWS	33	27	19	23	21	32	20	30	29	23	18	6	10	291
		<b>Total</b>	<b>114</b>	<b>104</b>	<b>83</b>	<b>107</b>	<b>125</b>	<b>129</b>	<b>91</b>	<b>104</b>	<b>114</b>	<b>116</b>	<b>73</b>	<b>47</b>	<b>48</b>	<b>1255</b>
UNION	Union Central	CPS	95	95	70	75	82	91	81	75	98	87	73	37	44	1003
		CWS	29	25	19	17	26	31	32	32	29	31	16	8	6	301
		<b>Total</b>	<b>124</b>	<b>120</b>	<b>89</b>	<b>92</b>	<b>108</b>	<b>122</b>	<b>113</b>	<b>107</b>	<b>127</b>	<b>118</b>	<b>89</b>	<b>45</b>	<b>50</b>	<b>1304</b>
	Union East	CPS	104	80	76	63	68	89	81	86	92	97	54	35	44	969
		CWS	30	25	21	22	29	40	29	19	36	40	19	5	4	319
		<b>Total</b>	<b>134</b>	<b>105</b>	<b>97</b>	<b>85</b>	<b>97</b>	<b>129</b>	<b>110</b>	<b>105</b>	<b>128</b>	<b>137</b>	<b>73</b>	<b>40</b>	<b>48</b>	<b>1288</b>
	Union West	CPS	103	71	68	55	94	112	99	78	94	88	64	46	44	1016
		CWS	37	21	22	20	22	37	23	37	34	40	20	6	5	324
		<b>Total</b>	<b>140</b>	<b>92</b>	<b>90</b>	<b>75</b>	<b>116</b>	<b>149</b>	<b>122</b>	<b>115</b>	<b>128</b>	<b>128</b>	<b>84</b>	<b>52</b>	<b>49</b>	<b>1340</b>
	County Totals	CPS	302	246	214	193	244	292	261	239	284	272	191	118	132	2988
		CWS	96	71	62	59	77	108	84	88	99	111	55	19	15	944
		<b>Total</b>	<b>398</b>	<b>317</b>	<b>276</b>	<b>252</b>	<b>321</b>	<b>400</b>	<b>345</b>	<b>327</b>	<b>383</b>	<b>383</b>	<b>246</b>	<b>137</b>	<b>147</b>	<b>3932</b>
WARREN	Warren	CPS	81	76	62	69	79	72	78	69	67	77	55	46	43	874
		CWS	23	26	20	19	18	24	15	13	31	24	10	8	7	238
		<b>Total</b>	<b>104</b>	<b>102</b>	<b>82</b>	<b>88</b>	<b>97</b>	<b>96</b>	<b>93</b>	<b>82</b>	<b>98</b>	<b>101</b>	<b>65</b>	<b>54</b>	<b>50</b>	<b>1112</b>
	County Totals	CPS	81	76	62	69	79	72	78	69	67	77	55	46	43	874
		CWS	23	26	20	19	18	24	15	13	31	24	10	8	7	238
		<b>Total</b>	<b>104</b>	<b>102</b>	<b>82</b>	<b>88</b>	<b>97</b>	<b>96</b>	<b>93</b>	<b>82</b>	<b>98</b>	<b>101</b>	<b>65</b>	<b>54</b>	<b>50</b>	<b>1112</b>
<b>County CPS Referral Total</b>		<b>CPS</b>	<b>5,445</b>	<b>4,550</b>	<b>3,989</b>	<b>3,825</b>	<b>4,969</b>	<b>5,558</b>	<b>4,725</b>	<b>4,598</b>	<b>5,388</b>	<b>5,077</b>	<b>3,958</b>	<b>2,082</b>	<b>2,797</b>	<b>56,961</b>
<b>County CWS Referral Total</b>		<b>CWS</b>	<b>1,734</b>	<b>1,455</b>	<b>1,245</b>	<b>1,234</b>	<b>1,498</b>	<b>1,864</b>	<b>1,383</b>	<b>1,387</b>	<b>1,778</b>	<b>1,576</b>	<b>1,036</b>	<b>402</b>	<b>531</b>	<b>17,123</b>
<b>County Referral Total</b>		<b>Total</b>	<b>7,179</b>	<b>6,005</b>	<b>5,234</b>	<b>5,059</b>	<b>6,467</b>	<b>7,422</b>	<b>6,108</b>	<b>5,985</b>	<b>7,166</b>	<b>6,653</b>	<b>4,994</b>	<b>2,484</b>	<b>3,328</b>	<b>74,084</b>
Central Region IAIU	CPS	82	57	58	41	60	70	49	48	67	63	34	10	6	645	
	CWS	0	0	0	0	0	0	0	0	0	0	0	0	0	0	
	<b>Total</b>	<b>82</b>	<b>57</b>	<b>58</b>	<b>41</b>	<b>60</b>	<b>70</b>	<b>49</b>	<b>48</b>	<b>67</b>	<b>63</b>	<b>34</b>	<b>10</b>	<b>6</b>	<b>645</b>	
Metro Region IAIU	CPS	64	41	36	42	43	80	45	41	46	69	33	3	11	554	
	CWS	0	0	0	0	0	0	0	0	0	0	0	0	0	0	
	<b>Total</b>	<b>64</b>	<b>41</b>	<b>36</b>	<b>42</b>	<b>43</b>	<b>80</b>	<b>45</b>	<b>41</b>	<b>46</b>	<b>69</b>	<b>33</b>	<b>3</b>	<b>11</b>	<b>554</b>	
Northern Region IAIU	CPS	89	64	53	37	68	77	45	45	59	42	44	6	12	641	
	CWS	0	0	0	0	0	0	0	0	0	0	0	0	0	0	
	<b>Total</b>	<b>89</b>	<b>64</b>	<b>53</b>	<b>37</b>	<b>68</b>	<b>77</b>	<b>45</b>	<b>45</b>	<b>59</b>	<b>42</b>	<b>44</b>	<b>6</b>	<b>12</b>	<b>641</b>	
Southern Region IAIU	CPS	90	69	66	57	83	75	59	62	82	61	51	12	18	785	
	CWS	0	0	0	0	0	0	0	0	0	0	0	0	0	0	
	<b>Total</b>	<b>90</b>	<b>69</b>	<b>66</b>	<b>57</b>	<b>83</b>	<b>75</b>	<b>59</b>	<b>62</b>	<b>82</b>	<b>61</b>	<b>51</b>	<b>12</b>	<b>18</b>	<b>785</b>	
<b>IAIU CPS Subtotal</b>		<b>CPS</b>	<b>325</b>	<b>231</b>	<b>213</b>	<b>177</b>	<b>254</b>	<b>302</b>	<b>198</b>	<b>196</b>	<b>254</b>	<b>235</b>	<b>162</b>	<b>31</b>	<b>47</b>	<b>2,625</b>
<b>IAIU CWS Subtotal</b>		<b>CWS</b>	<b>0</b>	<b>0</b>	<b>0</b>	<b>0</b>	<b>0</b>	<b>0</b>	<b>0</b>	<b>0</b>	<b>0</b>	<b>0</b>	<b>0</b>	<b>0</b>	<b>0</b>	
<b>IAIU Subtotal</b>		<b>Total</b>	<b>325</b>	<b>231</b>	<b>213</b>	<b>177</b>	<b>254</b>	<b>302</b>	<b>198</b>	<b>196</b>	<b>254</b>	<b>235</b>	<b>162</b>	<b>31</b>	<b>47</b>	<b>2,625</b>
<b>County and IAIU CPS Subtotal</b>		<b>CPS</b>	<b>5,770</b>	<b>4,781</b>	<b>4,202</b>	<b>4,002</b>	<b>5,223</b>	<b>5,860</b>	<b>4,923</b>	<b>4,794</b>	<b>5,642</b>	<b>5,312</b>	<b>4,120</b>	<b>2,113</b>	<b>2,844</b>	<b>59,586</b>
<b>County and IAIU CWS Subtotal</b>		<b>CWS</b>	<b>1,734</b>	<b>1,455</b>	<b>1,245</b>	<b>1,234</b>	<b>1,498</b>	<b>1,864</b>	<b>1,383</b>	<b>1,387</b>	<b>1,778</b>	<b>1,576</b>	<b>1,036</b>	<b>402</b>	<b>531</b>	<b>17,123</b>
<b>Unable to Determine<sup>(1)</sup></b>		<b>Total</b>	<b>127</b>	<b>147</b>	<b>138</b>	<b>138</b>	<b>145</b>	<b>170</b>	<b>117</b>	<b>108</b>	<b>135</b>	<b>113</b>	<b>79</b>	<b>39</b>	<b>59</b>	<b>1,515</b>
<b>Other Offices</b>		<b>Total</b>	<b>3</b>	<b>0</b>	<b>1</b>	<b>0</b>	<b>0</b>	<b>0</b>	<b>0</b>	<b>0</b>	<b>2</b>	<b>3</b>	<b>2</b>	<b>2</b>	<b>0</b>	<b>13</b>
<b>Grand Total</b>		<b>Total</b>	<b>7,634</b>	<b>6,383</b>	<b>5,586</b>	<b>5,374</b>	<b>6,866</b>	<b>7,894</b>	<b>6,423</b>	<b>6,289</b>	<b>7,557</b>	<b>7,004</b>	<b>5,237</b>	<b>2,556</b>	<b>3,434</b>	<b>78,237</b>

<sup>(1)</sup>CPS Reports or CWS Referrals not assigned to an office through the Assignment Designee, but were assigned to an office for an assessment or investigation.