



Child Protection and Permanency

Monthly Screening and Investigation Report June 2016

Allison Blake, Ph.D., L.S.W.
Commissioner

July 20, 2016



NEW JERSEY DEPARTMENT OF
CHILDREN AND FAMILIES

Table of Contents

Table 1: NJ State Central Registry Activity: Monthly Child Abuse and Neglect Hotline Calls, Intakes and Assignments to Child Protection & Permanency (CP&P) Offices

Chart 1: CP&P Annual Trends in Child Protection Services (CPS) Reports and Child Welfare Services (CWS) Referrals

Table 2: Assignments to CP&P Offices: CPS Reports and CWS Referrals

Table 3: Source of CPS Reports and CWS Referrals

Table 4: Monthly Count of CPS Reports and CWS Referrals Assigned to Counties

Table 5: Monthly Count of CPS Reports and CWS Referrals Assigned to CP&P Local Offices

Table 1: NJ State Central Registry Activity: Monthly Child Abuse and Neglect Hotline Calls, Intakes and Assignments to CP&P Offices^{1,2,7}

| 2015 - 2016 | Hotline Call Activity | | | | Intakes Recorded in NJ SPIRIT ^{6,8} | | | | | | | | | | | | Assignments to CP&P Offices | | | | |
|------------------------|---------------------------------|----------------------------|----------------------------------|------------------------------------|----------------------------------------------|--------------|---------------|--------------|--------------------------|-------------|--------------------------|--------------|------------------------------|--------------|-----------------------|--------------|-----------------------------|--------------|---------------|--------------|---------------|
| | Total Calls to SCR ³ | Abandon Calls ⁴ | Average Time to Answer (seconds) | Resulting NJS Intakes ⁵ | CPS Reports | | CWS Referrals | | No Action Required (NAR) | | Related Information (RI) | | Information & Referral (I&R) | | Information Only (IO) | | CPS Reports | | CWS Referrals | | Total |
| | | | | | n | % | n | % | n | % | n | % | n | % | n | % | n | % | n | % | |
| June 2015 | 13,760 | 405 | 29 | 15,189 | 4,887 | 32.2% | 1,436 | 9.5% | 373 | 2.5% | 3,981 | 26.2% | 1,659 | 10.9% | 2,853 | 18.8% | 4,887 | 77.3% | 1,436 | 22.7% | 6,323 |
| July 2015 | 12,132 | 380 | 20 | 13,624 | 4,140 | 30.4% | 1,273 | 9.3% | 442 | 3.2% | 3,569 | 26.2% | 1,416 | 10.4% | 2,784 | 20.4% | 4,140 | 76.5% | 1,273 | 23.5% | 5,413 |
| August 2015 | 12,553 | 652 | 24 | 13,691 | 3,978 | 29.1% | 1,257 | 9.2% | 401 | 2.9% | 3,713 | 27.1% | 1,384 | 10.1% | 2,958 | 21.6% | 3,978 | 76.0% | 1,256 | 24.0% | 5,234 |
| September 2015 | 13,335 | 351 | 24 | 14,955 | 4,776 | 31.9% | 1,494 | 10.0% | 467 | 3.1% | 3,908 | 26.1% | 1,601 | 10.7% | 2,709 | 18.1% | 4,776 | 76.2% | 1,495 | 23.8% | 6,271 |
| October 2015 | 14,304 | 315 | 18 | 15,821 | 5,139 | 32.5% | 1,620 | 10.2% | 332 | 2.1% | 4,073 | 25.7% | 1,834 | 11.6% | 2,823 | 17.8% | 5,139 | 76.0% | 1,619 | 24.0% | 6,758 |
| November 2015 | 13,321 | 445 | 20 | 14,527 | 4,417 | 30.4% | 1,475 | 10.2% | 347 | 2.4% | 3,942 | 27.1% | 1,513 | 10.4% | 2,833 | 19.5% | 4,417 | 74.9% | 1,477 | 25.1% | 5,894 |
| December 2015 | 13,186 | 603 | 28 | 14,236 | 4,530 | 31.8% | 1,544 | 10.8% | 370 | 2.6% | 3,709 | 26.1% | 1,567 | 11.0% | 2,516 | 17.7% | 4,530 | 74.6% | 1,544 | 25.4% | 6,074 |
| January 2016 | 13,499 | 551 | 40 | 14,655 | 4,686 | 32.0% | 1,573 | 10.7% | 282 | 1.9% | 4,020 | 27.4% | 1,482 | 10.1% | 2,612 | 17.8% | 4,686 | 74.9% | 1,571 | 25.1% | 6,257 |
| February 2016 | 13,927 | 590 | 40 | 15,143 | 4,974 | 32.8% | 1,620 | 10.7% | 419 | 2.8% | 3,836 | 25.3% | 1,627 | 10.7% | 2,667 | 17.6% | 4,974 | 75.4% | 1,622 | 24.6% | 6,596 |
| March 2016 | 14,064 | 446 | 32 | 15,619 | 5,000 | 32.0% | 1,671 | 10.7% | 428 | 2.7% | 3,912 | 25.0% | 1,812 | 11.6% | 2,796 | 17.9% | 5,000 | 75.0% | 1,669 | 25.0% | 6,669 |
| April 2016 | 13,995 | 448 | 29 | 15,326 | 5,065 | 33.0% | 1,541 | 10.1% | 348 | 2.3% | 3,774 | 24.6% | 1,742 | 11.4% | 2,856 | 18.6% | 5,065 | 76.7% | 1,542 | 23.3% | 6,607 |
| May 2016 | 14,389 | 413 | 26 | 15,806 | 5,238 | 33.1% | 1,634 | 10.3% | 393 | 2.5% | 3,902 | 24.7% | 1,852 | 11.7% | 2,787 | 17.6% | 5,238 | 76.2% | 1,633 | 23.8% | 6,871 |
| Jun 2016 | 13,304 | 396 | 26 | 14,592 | 4,602 | 31.5% | 1,460 | 10.0% | 336 | 2.3% | 3,687 | 25.3% | 1,808 | 12.4% | 2,699 | 18.5% | 4,602 | 75.9% | 1,461 | 24.1% | 6,063 |
| Monthly Average | 13,521 | 461 | 27 | 14,860 | 4,726 | 31.8% | 1,508 | 10.1% | 380 | 2.6% | 3,848 | 25.9% | 1,638 | 11.0% | 2,761 | 18.6% | 4,726 | 75.8% | 1,508 | 24.2% | 6,233 |
| Overall Total | 175,769 | 5,995 | | 193,184 | 61,432 | | 19,598 | | 4,938 | | 50,026 | | 21,297 | | 35,893 | | 61,432 | 75.8% | 19,598 | 24.2% | 81,030 |

¹ Comes from three distinct sources: (1) the Automatic Call Distribution (ACD) phone system; which keeps a count of the number of calls and call routing; (2) Monthly NJSpirit Intakes; which record decision making on calls received by hotline screeners, and (3) NJSpirit extracts of assigned CWS Referrals and CPS Reports.

² The number of Intakes, CPS Reports, and CWS Referrals are based on an extract from NJSpirit. Data extracted by the Office of Research, Evaluation, and Reporting on **July 20, 2016** includes all Intakes, CPS Reports, and CWS Referrals received from **June 1, 2016 through June 30, 2016**.

³ The number calls received through the ACD System that were directed to a screener from any call-in phone number.

⁴ The number of calls received through the ACD System that are abandoned either while waiting in queue or while ringing.

⁵ The number of Intakes entered in NJSpirit from the number of calls received.

⁶ The number of Intakes recorded in NJSpirit, by type of Intake. There is not a one-to-one relationship between an ACD call and an Intake; multiple calls to State Central Registry (SCR) may result in a single Intake, or one call may result in multiple Intakes.

⁷ Intake: The process of documenting: a report of alleged abuse or neglect of a child (CPS); a request for services on behalf of a child, or a referral of a child for services (CWS); a call in which the caller provides additional or clarifying information about a current service case or active investigation (RI); informing a caller of, or referring a caller to, services available from other private or public sources (I&R); a call that requires no action by CP&P (NAR); or a response to a simple inquiry (IO).

⁸ NJ SPIRIT: NJ Statewide Protection Investigation and Reporting Information Tool case management system

CP&P Annual Trends in CPS Reports and CWS Referrals

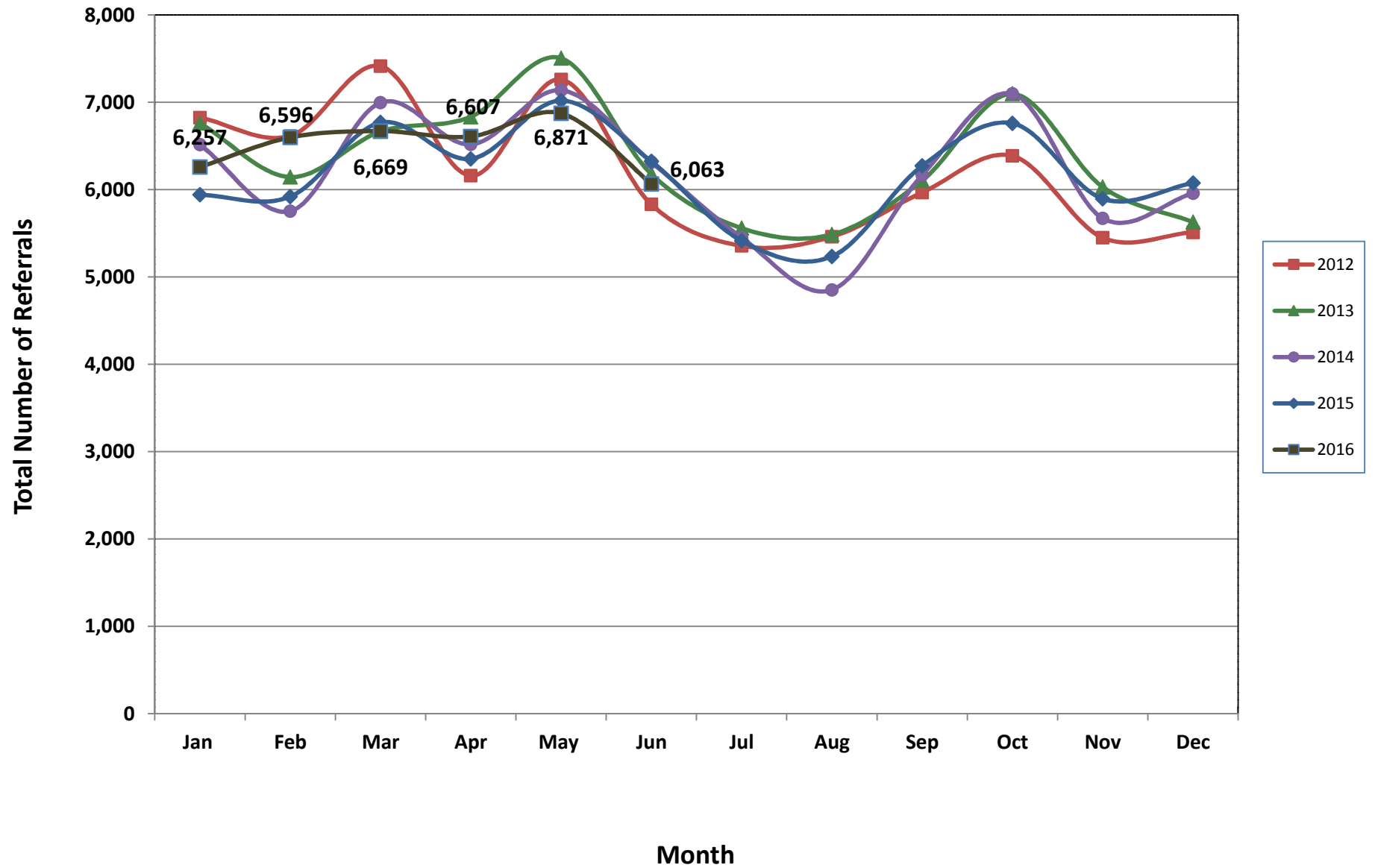


Table 2: Assignments to CP&P Offices: CPS Reports and CWS Referrals¹

| Intake Date ³ | | CPS Reports ² | CWS Referrals ² | Total Assignments ² |
|--------------------------|--------------|--------------------------|----------------------------|--------------------------------|
| 2012 | Jan 2012 | 5,530 | 1,294 | 6,824 |
| | Feb 2012 | 5,358 | 1,255 | 6,613 |
| | Mar 2012 | 5,985 | 1,428 | 7,413 |
| | Apr 2012 | 4,899 | 1,259 | 6,158 |
| | May 2012 | 5,874 | 1,385 | 7,259 |
| | Jun 2012 | 4,640 | 1,190 | 5,830 |
| | Jul 2012 | 4,254 | 1,101 | 5,355 |
| | Aug 2012 | 4,325 | 1,135 | 5,460 |
| | Sep 2012 | 4,769 | 1,196 | 5,965 |
| | Oct 2012 | 5,178 | 1,207 | 6,385 |
| | Nov 2012 | 4,310 | 1,138 | 5,448 |
| | Dec 2012 | 4,394 | 1,116 | 5,510 |
| | Total | 59,516 | 14,704 | 74,220 |
| 2013 | Jan 2013 | 5,464 | 1,296 | 6,760 |
| | Feb 2013 | 4,966 | 1,177 | 6,143 |
| | Mar 2013 | 5,355 | 1,309 | 6,664 |
| | Apr 2013 | 5,430 | 1,402 | 6,832 |
| | May 2013 | 5,993 | 1,510 | 7,503 |
| | Jun 2013 | 4,947 | 1,230 | 6,177 |
| | Jul 2013 | 4,330 | 1,228 | 5,558 |
| | Aug 2013 | 4,330 | 1,155 | 5,485 |
| | Sep 2013 | 4,851 | 1,251 | 6,102 |
| | Oct 2013 | 5,614 | 1,481 | 7,095 |
| | Nov 2013 | 4,694 | 1,334 | 6,028 |
| | Dec 2013 | 4,397 | 1,229 | 5,626 |
| | Total | 60,371 | 15,602 | 75,973 |
| 2014 | Jan 2014 | 5,097 | 1,416 | 6,513 |
| | Feb 2014 | 4,457 | 1,295 | 5,752 |
| | Mar 2014 | 5,408 | 1,586 | 6,994 |
| | Apr 2014 | 5,049 | 1,467 | 6,516 |
| | May 2014 | 5,501 | 1,635 | 7,136 |
| | Jun 2014 | 4,796 | 1,517 | 6,313 |
| | Jul 2014 | 4,202 | 1,247 | 5,449 |
| | Aug 2014 | 3,629 | 1,222 | 4,851 |
| | Sep 2014 | 4,668 | 1,498 | 6,166 |
| | Oct 2014 | 5,509 | 1,586 | 7,095 |
| | Nov 2014 | 4,254 | 1,416 | 5,670 |
| | Dec 2014 | 4,509 | 1,447 | 5,956 |
| | Total | 57,079 | 17,332 | 74,411 |

Table 2: Assignments to CP&P Offices: CPS Reports and CWS Referrals¹

| Intake Date ³ | | CPS Reports ² | CWS Referrals ² | Total Assignments ² |
|--------------------------|--------------|--------------------------|----------------------------|--------------------------------|
| 2015 | Jan 2015 | 4,549 | 1,391 | 5,940 |
| | Feb 2015 | 4,574 | 1,345 | 5,919 |
| | Mar 2015 | 5,187 | 1,580 | 6,767 |
| | Apr 2015 | 4,967 | 1,384 | 6,351 |
| | May 2015 | 5,457 | 1,561 | 7,018 |
| | Jun 2015 | 4,887 | 1,436 | 6,323 |
| | Jul 2015 | 4,140 | 1,273 | 5,413 |
| | Aug 2015 | 3,978 | 1,256 | 5,234 |
| | Sep 2015 | 4,776 | 1,495 | 6,271 |
| | Oct 2015 | 5,139 | 1,619 | 6,758 |
| | Nov 2015 | 4,417 | 1,477 | 5,894 |
| | Dec 2015 | 4,530 | 1,544 | 6,074 |
| | Total | 56,601 | 17,361 | 73,962 |
| 2016 | Jan 2016 | 4,686 | 1,571 | 6,257 |
| | Feb 2016 | 4,974 | 1,622 | 6,596 |
| | Mar 2016 | 5,000 | 1,669 | 6,669 |
| | Apr 2016 | 5,065 | 1,542 | 6,607 |
| | May 2016 | 5,238 | 1,633 | 6,871 |
| | Jun 2016 | 4,602 | 1,461 | 6,063 |
| | Total | 29,565 | 9,498 | 39,063 |
| Grand Total | | 263,132 | 74,497 | 337,629 |

¹Source of Data: NJ SPIRIT

²A CPS Report or a CWS Referral may include multiple children in a family, with one or more allegation or request for services. In these cases, each CPS Report or CWS Referral is counted once - the CPS Report or the CWS Referral is the unit of analysis rather than the child.

³Prior to January 2014, the number of CPS Reports and CWS Referrals was based on the type of assignment of the CPS Report or CWS Referral. Beginning in January 2014, the number of CPS Reports and CWS Referrals is based on the number of CPS Reports and CWS Referrals received.

Table 3: Source of CPS Reports and CWS Referrals

| CPS Reports and CWS Referrals | Source | Jun 2015 | Jul 2015 | Aug 2015 | Sep 2015 | Oct 2015 | Nov 2015 | Dec 2015 | Jan 2016 | Feb 2016 | Mar 2016 | Apr 2016 | May 2016 | Jun 2016 | |
|---------------------------------------------|--------------|--------------|--------------|--------------|--------------|--------------|--------------|--------------|--------------|--------------|--------------|--------------|--------------|------------|------------|
| | School Staff | 1,166 | 183 | 75 | 1,123 | 1,763 | 1,454 | 1,596 | 1,569 | 1,900 | 1,690 | 1,646 | 1,765 | 982 | 16% |
| Healthcare Provider | 808 | 816 | 832 | 780 | 825 | 766 | 780 | 830 | 852 | 892 | 895 | 823 | 814 | 13% | |
| Law Enforcement | 1093 | 1082 | 1,010 | 1,040 | 1,003 | 909 | 910 | 910 | 953 | 1,052 | 1,030 | 1,056 | 1,152 | 19% | |
| Government Agency | 422 | 495 | 449 | 437 | 426 | 376 | 389 | 412 | 394 | 448 | 410 | 419 | 439 | 7% | |
| Parent | 581 | 594 | 592 | 589 | 518 | 451 | 495 | 529 | 504 | 503 | 566 | 597 | 546 | 9% | |
| Relative/Friend/Neighbor | 546 | 604 | 595 | 592 | 526 | 466 | 455 | 446 | 454 | 424 | 473 | 553 | 540 | 9% | |
| Anonymous | 725 | 611 | 622 | 739 | 710 | 609 | 587 | 628 | 612 | 676 | 662 | 777 | 697 | 11% | |
| CP&P | 125 | 119 | 110 | 123 | 137 | 121 | 112 | 113 | 133 | 155 | 104 | 133 | 120 | 2% | |
| Court/Legal | 148 | 155 | 113 | 115 | 119 | 108 | 108 | 119 | 132 | 154 | 137 | 141 | 124 | 2% | |
| Community Group/Individual | 232 | 280 | 297 | 243 | 306 | 240 | 255 | 294 | 274 | 262 | 269 | 236 | 238 | 4% | |
| Facility Staff (incl Correctional Facility) | 89 | 92 | 105 | 78 | 83 | 83 | 81 | 91 | 80 | 76 | 88 | 64 | 68 | 1% | |
| Child (Self) | 41 | 44 | 67 | 47 | 34 | 31 | 21 | 41 | 37 | 36 | 46 | 37 | 38 | 1% | |
| Other | 330 | 327 | 344 | 348 | 288 | 265 | 274 | 259 | 253 | 286 | 257 | 252 | 285 | 5% | |
| Daycare/Babysitter | 17 | 11 | 23 | 17 | 20 | 15 | 11 | 16 | 18 | 15 | 24 | 18 | 20 | 0% | |
| Total | 6,323 | 5,413 | 5,234 | 6,271 | 6,758 | 5,894 | 6,074 | 6,257 | 6,596 | 6,669 | 6,607 | 6,871 | 6,063 | | |

Table 4: Monthly Count of CPS Reports and CWS Referrals Assigned to Counties

| County | | | | | | | | | | | | | | Average Number of Assignments Last 13 Months | May 16 to Jun 16 Numerical Difference |
|----------------------------------------|--------------|--------------|--------------|--------------|--------------|--------------|--------------|--------------|--------------|--------------|---------------|--------------|--------------|----------------------------------------------------|---------------------------------------------|
| | Jun 2015 | Jul 2015 | Aug 2015 | Sep 2015 | Oct 2015 | Nov 2015 | Dec 2015 | Jan 2016 | Feb 2016 | Mar 2016 | April 2016 | May 2016 | Jun 2016 | | |
| Atlantic | 239 | 218 | 227 | 295 | 267 | 227 | 255 | 251 | 284 | 265 | 250 | 291 | 221 | 253 | -44 |
| Bergen | 296 | 284 | 257 | 345 | 411 | 336 | 394 | 333 | 392 | 369 | 321 | 385 | 354 | 344 | -15 |
| Burlington | 274 | 263 | 284 | 307 | 303 | 258 | 268 | 275 | 315 | 309 | 321 | 321 | 260 | 289 | -49 |
| Camden | 552 | 449 | 438 | 516 | 609 | 461 | 498 | 558 | 551 | 527 | 573 | 608 | 532 | 529 | 5 |
| Cape May | 69 | 78 | 86 | 92 | 112 | 75 | 89 | 83 | 65 | 79 | 94 | 82 | 67 | 82 | -12 |
| Cumberland | 217 | 173 | 152 | 231 | 215 | 177 | 174 | 195 | 179 | 206 | 219 | 245 | 202 | 199 | -4 |
| Essex | 642 | 583 | 565 | 635 | 675 | 660 | 625 | 685 | 701 | 752 | 743 | 717 | 644 | 664 | -108 |
| Gloucester | 259 | 258 | 255 | 247 | 300 | 245 | 261 | 251 | 252 | 285 | 267 | 233 | 234 | 257 | -51 |
| Hudson | 471 | 352 | 325 | 399 | 451 | 342 | 431 | 424 | 450 | 412 | 403 | 481 | 400 | 411 | -12 |
| Hunterdon | 47 | 48 | 38 | 58 | 52 | 37 | 39 | 53 | 58 | 46 | 62 | 38 | 42 | 48 | -4 |
| Mercer | 262 | 198 | 226 | 263 | 324 | 254 | 252 | 265 | 263 | 276 | 278 | 282 | 255 | 261 | -21 |
| Middlesex | 423 | 335 | 317 | 400 | 466 | 387 | 435 | 419 | 439 | 479 | 492 | 470 | 387 | 419 | -92 |
| Monmouth | 346 | 301 | 301 | 364 | 361 | 343 | 308 | 328 | 413 | 361 | 373 | 366 | 353 | 348 | -8 |
| Morris | 233 | 186 | 175 | 250 | 239 | 216 | 215 | 238 | 228 | 217 | 222 | 247 | 228 | 223 | 11 |
| Ocean | 388 | 376 | 369 | 376 | 383 | 401 | 336 | 403 | 378 | 366 | 365 | 415 | 354 | 378 | -12 |
| Passaic | 412 | 317 | 345 | 422 | 461 | 422 | 449 | 421 | 504 | 510 | 455 | 456 | 401 | 429 | -109 |
| Salem | 81 | 68 | 53 | 102 | 72 | 89 | 81 | 94 | 67 | 94 | 89 | 82 | 80 | 81 | -14 |
| Somerset | 163 | 158 | 128 | 155 | 153 | 157 | 143 | 141 | 160 | 165 | 152 | 169 | 160 | 154 | -5 |
| Sussex | 112 | 103 | 84 | 89 | 104 | 103 | 95 | 95 | 113 | 105 | 94 | 88 | 91 | 98 | -14 |
| Union | 305 | 228 | 215 | 276 | 304 | 257 | 318 | 299 | 331 | 350 | 336 | 373 | 295 | 299 | -55 |
| Warren | 102 | 89 | 94 | 101 | 107 | 81 | 78 | 93 | 87 | 77 | 99 | 106 | 88 | 92 | 11 |
| County Subtotals | 5,893 | 5,065 | 4,934 | 5,923 | 6,369 | 5,528 | 5,744 | 5,904 | 6,230 | 6,250 | 6,208 | 6,455 | 5,648 | 5,858 | -602 |
| Central Region IAIU | 54 | 24 | 41 | 53 | 52 | 56 | 62 | 44 | 53 | 46 | 59 | 55 | 53 | 50 | 7 |
| Metro Region IAIU | 66 | 56 | 30 | 36 | 50 | 48 | 46 | 43 | 60 | 64 | 60 | 68 | 61 | 53 | -3 |
| Northern Region IAIU | 65 | 61 | 43 | 45 | 66 | 58 | 44 | 58 | 58 | 66 | 71 | 70 | 66 | 59 | 0 |
| Southern Region IAIU | 88 | 63 | 59 | 60 | 83 | 72 | 61 | 79 | 64 | 76 | 90 | 73 | 92 | 74 | 16 |
| IAIU Subtotals | 273 | 204 | 173 | 194 | 251 | 234 | 213 | 224 | 235 | 252 | 280 | 266 | 272 | 236 | 20 |
| Unable to Determine¹ | 153 | 142 | 124 | 153 | 136 | 131 | 114 | 128 | 126 | 165 | 115 | 149 | 140 | 137 | -25 |
| Other Offices | 4 | 2 | 3 | 1 | 2 | 1 | 3 | 1 | 5 | 2 | 4 | 1 | 3 | 2 | 1 |
| Grand Total | 6,323 | 5,413 | 5,234 | 6,271 | 6,758 | 5,894 | 6,074 | 6,257 | 6,596 | 6,669 | 6,607 | 6,871 | 6,063 | 6,233 | -606 |

¹CPS Reports or CWS Referrals not assigned to an office through the Assignment Designee, but were assigned to an office for an assessment or investigation.



Table 5: Monthly Count of CPS Reports and CWS Referrals Assigned to CP&P Local Offices

| County | Local Office | Type of Referral | Month | | | | | | | | | | | | Total | |
|------------|-----------------|------------------|------------|------------|------------|------------|------------|------------|------------|------------|------------|------------|------------|------------|------------|--------------|
| | | | Jun 2015 | Jul 2015 | Aug 2015 | Sep 2015 | Oct 2015 | Nov 2015 | Dec 2015 | Jan 2016 | Feb 2016 | Mar 2016 | Apr 2016 | May 2016 | | Jun 2016 |
| ATLANTIC | Atlantic East | CPS | 115 | 100 | 107 | 134 | 115 | 107 | 113 | 110 | 133 | 144 | 97 | 129 | 108 | 1,512 |
| | | CWS | 24 | 30 | 26 | 35 | 30 | 32 | 36 | 43 | 34 | 27 | 35 | 41 | 34 | 427 |
| | | Total | 139 | 130 | 133 | 169 | 145 | 139 | 149 | 153 | 167 | 171 | 132 | 170 | 142 | 1,939 |
| | Atlantic West | CPS | 81 | 72 | 77 | 94 | 101 | 70 | 82 | 70 | 88 | 71 | 95 | 94 | 66 | 1,061 |
| | | CWS | 19 | 16 | 17 | 32 | 21 | 18 | 24 | 28 | 29 | 23 | 23 | 27 | 13 | 290 |
| | | Total | 100 | 88 | 94 | 126 | 122 | 88 | 106 | 98 | 117 | 94 | 118 | 121 | 79 | 1,351 |
| | County Totals | CPS | 196 | 172 | 184 | 228 | 216 | 177 | 195 | 180 | 221 | 215 | 192 | 223 | 174 | 2,573 |
| | | CWS | 43 | 46 | 43 | 67 | 51 | 50 | 60 | 71 | 63 | 50 | 58 | 68 | 47 | 717 |
| | | Total | 239 | 218 | 227 | 295 | 267 | 227 | 255 | 251 | 284 | 265 | 250 | 291 | 221 | 3,290 |
| BERGEN | Bergen Central | CPS | 102 | 83 | 72 | 98 | 117 | 98 | 119 | 128 | 107 | 121 | 101 | 134 | 121 | 1,401 |
| | | CWS | 32 | 29 | 29 | 36 | 50 | 37 | 41 | 39 | 51 | 48 | 32 | 40 | 39 | 503 |
| | | Total | 134 | 112 | 101 | 134 | 167 | 135 | 160 | 167 | 158 | 169 | 133 | 174 | 160 | 1,904 |
| | Bergen South | CPS | 120 | 127 | 106 | 157 | 177 | 144 | 164 | 121 | 174 | 150 | 136 | 162 | 143 | 1,881 |
| | | CWS | 42 | 45 | 50 | 54 | 67 | 57 | 70 | 45 | 60 | 50 | 52 | 49 | 51 | 692 |
| | | Total | 162 | 172 | 156 | 211 | 244 | 201 | 234 | 166 | 234 | 200 | 188 | 211 | 194 | 2,573 |
| | County Totals | CPS | 222 | 210 | 178 | 255 | 294 | 242 | 283 | 249 | 281 | 271 | 237 | 296 | 264 | 3,282 |
| | | CWS | 74 | 74 | 79 | 90 | 117 | 94 | 111 | 84 | 111 | 98 | 84 | 89 | 90 | 1,195 |
| | | Total | 296 | 284 | 257 | 345 | 411 | 336 | 394 | 333 | 392 | 369 | 321 | 385 | 354 | 4,477 |
| BURLINGTON | Burlington East | CPS | 99 | 97 | 110 | 110 | 121 | 93 | 118 | 117 | 127 | 105 | 131 | 128 | 84 | 1,440 |
| | | CWS | 26 | 38 | 36 | 36 | 31 | 28 | 20 | 32 | 39 | 38 | 32 | 39 | 34 | 429 |
| | | Total | 125 | 135 | 146 | 146 | 152 | 121 | 138 | 149 | 166 | 143 | 163 | 167 | 118 | 1,869 |
| | Burlington West | CPS | 115 | 96 | 97 | 120 | 119 | 107 | 101 | 92 | 109 | 124 | 130 | 117 | 109 | 1,436 |
| | | CWS | 34 | 32 | 41 | 41 | 32 | 30 | 29 | 34 | 40 | 42 | 28 | 37 | 33 | 453 |
| | | Total | 149 | 128 | 138 | 161 | 151 | 137 | 130 | 126 | 149 | 166 | 158 | 154 | 142 | 1,889 |
| | County Totals | CPS | 214 | 193 | 207 | 230 | 240 | 200 | 219 | 209 | 236 | 229 | 261 | 245 | 193 | 2,876 |
| | | CWS | 60 | 70 | 77 | 77 | 63 | 58 | 49 | 66 | 79 | 80 | 60 | 76 | 67 | 882 |
| | | Total | 274 | 263 | 284 | 307 | 303 | 258 | 268 | 275 | 315 | 309 | 321 | 321 | 260 | 3,758 |
| CAMDEN | Camden Central | CPS | 121 | 105 | 93 | 116 | 148 | 101 | 104 | 127 | 119 | 104 | 136 | 123 | 122 | 1,519 |
| | | CWS | 27 | 29 | 25 | 36 | 38 | 34 | 24 | 34 | 34 | 44 | 36 | 38 | 53 | 452 |
| | | Total | 148 | 134 | 118 | 152 | 186 | 135 | 128 | 161 | 153 | 148 | 172 | 161 | 175 | 1,971 |
| | Camden East | CPS | 125 | 81 | 105 | 109 | 123 | 100 | 106 | 108 | 106 | 104 | 114 | 123 | 94 | 1,398 |
| | | CWS | 30 | 30 | 28 | 21 | 21 | 32 | 27 | 28 | 27 | 16 | 27 | 33 | 28 | 348 |
| | | Total | 155 | 111 | 133 | 130 | 144 | 132 | 133 | 136 | 133 | 120 | 141 | 156 | 122 | 1,746 |
| | Camden North | CPS | 116 | 82 | 77 | 95 | 120 | 83 | 108 | 104 | 105 | 102 | 132 | 115 | 95 | 1,334 |
| | | CWS | 36 | 26 | 24 | 33 | 40 | 17 | 34 | 40 | 45 | 46 | 27 | 47 | 34 | 449 |
| | | Total | 152 | 108 | 101 | 128 | 160 | 100 | 142 | 144 | 150 | 148 | 159 | 162 | 129 | 1,783 |
| | Camden South | CPS | 73 | 76 | 66 | 83 | 88 | 77 | 75 | 85 | 86 | 77 | 79 | 97 | 80 | 1,042 |
| | | CWS | 24 | 20 | 20 | 23 | 31 | 17 | 20 | 32 | 29 | 34 | 22 | 32 | 26 | 330 |
| | | Total | 97 | 96 | 86 | 106 | 119 | 94 | 95 | 117 | 115 | 111 | 101 | 129 | 106 | 1,372 |
| | County Totals | CPS | 435 | 344 | 341 | 403 | 479 | 361 | 393 | 424 | 416 | 387 | 461 | 458 | 391 | 5,293 |
| | | CWS | 117 | 105 | 97 | 113 | 130 | 100 | 105 | 134 | 135 | 140 | 112 | 150 | 141 | 1,579 |
| | | Total | 552 | 449 | 438 | 516 | 609 | 461 | 498 | 558 | 551 | 527 | 573 | 608 | 532 | 6,872 |
| CAPE MAY | Cape May | CPS | 57 | 63 | 69 | 72 | 87 | 51 | 64 | 61 | 51 | 57 | 72 | 68 | 51 | 823 |
| | | CWS | 12 | 15 | 17 | 20 | 25 | 24 | 25 | 22 | 14 | 22 | 22 | 14 | 16 | 248 |
| | | Total | 69 | 78 | 86 | 92 | 112 | 75 | 89 | 83 | 65 | 79 | 94 | 82 | 67 | 1,071 |
| | County Totals | CPS | 57 | 63 | 69 | 72 | 87 | 51 | 64 | 61 | 51 | 57 | 72 | 68 | 51 | 823 |
| | | CWS | 12 | 15 | 17 | 20 | 25 | 24 | 25 | 22 | 14 | 22 | 22 | 14 | 16 | 248 |
| | | Total | 69 | 78 | 86 | 92 | 112 | 75 | 89 | 83 | 65 | 79 | 94 | 82 | 67 | 1,071 |
| CUMBERLAND | Cumberland East | CPS | 66 | 33 | 36 | 61 | 42 | 39 | 46 | 59 | 52 | 48 | 64 | 81 | 61 | 688 |
| | | CWS | 19 | 6 | 9 | 18 | 26 | 18 | 14 | 12 | 13 | 16 | 18 | 14 | 16 | 199 |
| | | Total | 85 | 39 | 45 | 79 | 68 | 57 | 60 | 71 | 65 | 64 | 82 | 95 | 77 | 887 |
| | Cumberland West | CPS | 99 | 108 | 81 | 123 | 116 | 88 | 83 | 99 | 96 | 116 | 102 | 115 | 101 | 1,327 |
| | | CWS | 33 | 26 | 26 | 29 | 31 | 32 | 31 | 25 | 18 | 26 | 35 | 35 | 24 | 371 |
| | | Total | 132 | 134 | 107 | 152 | 147 | 120 | 114 | 124 | 114 | 142 | 137 | 150 | 125 | 1,698 |
| | County Totals | CPS | 165 | 141 | 117 | 184 | 158 | 127 | 129 | 158 | 148 | 164 | 166 | 196 | 162 | 2,015 |
| | | CWS | 52 | 32 | 35 | 47 | 57 | 50 | 45 | 37 | 31 | 42 | 53 | 49 | 40 | 570 |
| | | Total | 217 | 173 | 152 | 231 | 215 | 177 | 174 | 195 | 179 | 206 | 219 | 245 | 202 | 2,585 |

Data in this report is preliminary and may differ from any final report. This report is produced to ensure continuous quality improvement throughout DCF.



Table 5: Monthly Count of CPS Reports and CWS Referrals Assigned to CP&P Local Offices

| County | Local Office | Type of Referral | Month | | | | | | | | | | | | | Total |
|---------------|--------------------|------------------|------------|------------|------------|------------|------------|------------|------------|------------|------------|------------|------------|------------|--------------|--------------|
| | | | Jun 2015 | Jul 2015 | Aug 2015 | Sep 2015 | Oct 2015 | Nov 2015 | Dec 2015 | Jan 2016 | Feb 2016 | Mar 2016 | Apr 2016 | May 2016 | Jun 2016 | |
| ESSEX | Essex Central | CPS | 81 | 76 | 85 | 80 | 105 | 87 | 72 | 82 | 85 | 108 | 101 | 108 | 112 | 1,182 |
| | | CWS | 27 | 39 | 41 | 26 | 42 | 37 | 39 | 43 | 37 | 42 | 38 | 41 | 23 | 475 |
| | | Total | 108 | 115 | 126 | 106 | 147 | 124 | 111 | 125 | 122 | 150 | 139 | 149 | 135 | 1,657 |
| | Essex North | CPS | 67 | 42 | 40 | 53 | 53 | 54 | 66 | 53 | 73 | 75 | 48 | 59 | 54 | 737 |
| | | CWS | 23 | 18 | 17 | 22 | 23 | 21 | 30 | 29 | 25 | 35 | 21 | 19 | 24 | 307 |
| | | Total | 90 | 60 | 57 | 75 | 76 | 75 | 96 | 82 | 98 | 110 | 69 | 78 | 78 | 1,044 |
| | Essex South | CPS | 51 | 49 | 49 | 66 | 57 | 58 | 56 | 63 | 79 | 66 | 56 | 60 | 62 | 772 |
| | | CWS | 20 | 19 | 16 | 25 | 23 | 16 | 17 | 27 | 22 | 26 | 26 | 24 | 34 | 295 |
| | | Total | 71 | 68 | 65 | 91 | 80 | 74 | 73 | 90 | 101 | 92 | 82 | 84 | 96 | 1,067 |
| | Newark Center City | CPS | 72 | 61 | 64 | 89 | 83 | 82 | 78 | 91 | 95 | 87 | 110 | 97 | 95 | 1,104 |
| | | CWS | 27 | 23 | 29 | 29 | 35 | 36 | 39 | 26 | 30 | 42 | 45 | 34 | 25 | 420 |
| | | Total | 99 | 84 | 93 | 118 | 118 | 118 | 117 | 117 | 125 | 129 | 155 | 131 | 120 | 1,524 |
| | Newark Northeast | CPS | 108 | 81 | 69 | 101 | 83 | 81 | 65 | 92 | 89 | 99 | 115 | 93 | 72 | 1,148 |
| | | CWS | 28 | 31 | 26 | 25 | 37 | 34 | 33 | 39 | 30 | 36 | 27 | 47 | 24 | 417 |
| | | Total | 136 | 112 | 95 | 126 | 120 | 115 | 98 | 131 | 119 | 135 | 142 | 140 | 96 | 1,565 |
| Newark South | CPS | 102 | 113 | 94 | 88 | 100 | 106 | 92 | 107 | 96 | 104 | 121 | 87 | 80 | 1,290 | |
| | CWS | 36 | 31 | 35 | 31 | 34 | 48 | 38 | 33 | 40 | 32 | 35 | 48 | 39 | 480 | |
| | Total | 138 | 144 | 129 | 119 | 134 | 154 | 130 | 140 | 136 | 136 | 156 | 135 | 119 | 1,770 | |
| County Totals | CPS | 481 | 422 | 401 | 477 | 481 | 468 | 429 | 488 | 517 | 539 | 551 | 504 | 475 | 6,233 | |
| | CWS | 161 | 161 | 164 | 158 | 194 | 192 | 196 | 197 | 184 | 213 | 192 | 213 | 169 | 2,394 | |
| | Total | 642 | 583 | 565 | 635 | 675 | 660 | 625 | 685 | 701 | 752 | 743 | 717 | 644 | 8,627 | |
| GLOUCESTER | Gloucester East | CPS | 85 | 85 | 98 | 98 | 109 | 91 | 101 | 97 | 93 | 112 | 99 | 84 | 89 | 1,241 |
| | | CWS | 25 | 36 | 34 | 24 | 26 | 17 | 25 | 35 | 24 | 38 | 31 | 26 | 26 | 367 |
| | | Total | 110 | 121 | 132 | 122 | 135 | 108 | 126 | 132 | 117 | 150 | 130 | 110 | 115 | 1,608 |
| | Gloucester West | CPS | 121 | 118 | 93 | 94 | 133 | 103 | 109 | 91 | 102 | 106 | 115 | 87 | 85 | 1,357 |
| | | CWS | 28 | 19 | 30 | 31 | 32 | 34 | 26 | 28 | 33 | 29 | 22 | 36 | 34 | 382 |
| | | Total | 149 | 137 | 123 | 125 | 165 | 137 | 135 | 119 | 135 | 135 | 137 | 123 | 119 | 1,739 |
| | County Totals | CPS | 206 | 203 | 191 | 192 | 242 | 194 | 210 | 188 | 195 | 218 | 214 | 171 | 174 | 2,598 |
| CWS | | 53 | 55 | 64 | 55 | 58 | 51 | 51 | 63 | 57 | 67 | 53 | 62 | 60 | 749 | |
| Total | | 259 | 258 | 255 | 247 | 300 | 245 | 261 | 251 | 252 | 285 | 267 | 233 | 234 | 3,347 | |
| HUDSON | Hudson Central | CPS | 88 | 71 | 60 | 62 | 72 | 59 | 79 | 75 | 89 | 74 | 67 | 83 | 52 | 931 |
| | | CWS | 30 | 24 | 30 | 25 | 26 | 16 | 25 | 23 | 28 | 25 | 31 | 23 | 34 | 340 |
| | | Total | 118 | 95 | 90 | 87 | 98 | 75 | 104 | 98 | 117 | 99 | 98 | 106 | 86 | 1,271 |
| | Hudson North | CPS | 96 | 60 | 54 | 91 | 86 | 74 | 87 | 95 | 77 | 96 | 88 | 101 | 77 | 1,082 |
| | | CWS | 27 | 18 | 16 | 22 | 31 | 29 | 30 | 37 | 35 | 34 | 27 | 31 | 30 | 367 |
| | | Total | 123 | 78 | 70 | 113 | 117 | 103 | 117 | 132 | 112 | 130 | 115 | 132 | 107 | 1,449 |
| | Hudson South | CPS | 93 | 79 | 71 | 66 | 93 | 61 | 93 | 60 | 81 | 60 | 68 | 86 | 71 | 982 |
| | | CWS | 29 | 23 | 19 | 31 | 28 | 22 | 28 | 20 | 25 | 23 | 21 | 45 | 30 | 344 |
| | | Total | 122 | 102 | 90 | 97 | 121 | 83 | 121 | 80 | 106 | 83 | 89 | 131 | 101 | 1,326 |
| | Hudson West | CPS | 77 | 57 | 55 | 77 | 82 | 60 | 74 | 87 | 90 | 71 | 79 | 87 | 84 | 980 |
| | | CWS | 31 | 20 | 20 | 25 | 33 | 21 | 15 | 27 | 25 | 29 | 22 | 25 | 22 | 315 |
| | | Total | 108 | 77 | 75 | 102 | 115 | 81 | 89 | 114 | 115 | 100 | 101 | 112 | 106 | 1,295 |
| County Totals | CPS | 354 | 267 | 240 | 296 | 333 | 254 | 333 | 317 | 337 | 301 | 302 | 357 | 284 | 3,975 | |
| | CWS | 117 | 85 | 85 | 103 | 118 | 88 | 98 | 107 | 113 | 111 | 101 | 124 | 116 | 1,366 | |
| | Total | 471 | 352 | 325 | 399 | 451 | 342 | 431 | 424 | 450 | 412 | 403 | 481 | 400 | 5,341 | |
| HUNTERDON | Hunterdon | CPS | 32 | 35 | 27 | 41 | 40 | 27 | 27 | 35 | 41 | 33 | 49 | 29 | 33 | 449 |
| | | CWS | 15 | 13 | 11 | 17 | 12 | 10 | 12 | 18 | 17 | 13 | 13 | 9 | 9 | 169 |
| | | Total | 47 | 48 | 38 | 58 | 52 | 37 | 39 | 53 | 58 | 46 | 62 | 38 | 42 | 618 |
| | County Totals | CPS | 32 | 35 | 27 | 41 | 40 | 27 | 27 | 35 | 41 | 33 | 49 | 29 | 33 | 449 |
| | CWS | 15 | 13 | 11 | 17 | 12 | 10 | 12 | 18 | 17 | 13 | 13 | 9 | 9 | 169 | |
| | Total | 47 | 48 | 38 | 58 | 52 | 37 | 39 | 53 | 58 | 46 | 62 | 38 | 42 | 618 | |
| MERCER | Mercer North | CPS | 92 | 70 | 82 | 87 | 115 | 79 | 89 | 91 | 98 | 100 | 95 | 93 | 103 | 1,194 |
| | | CWS | 25 | 29 | 18 | 33 | 40 | 46 | 33 | 37 | 29 | 33 | 23 | 27 | 32 | 405 |
| | | Total | 117 | 99 | 100 | 120 | 155 | 125 | 122 | 128 | 127 | 133 | 118 | 120 | 135 | 1,599 |
| | Mercer South | CPS | 103 | 76 | 107 | 107 | 125 | 98 | 100 | 102 | 108 | 102 | 121 | 124 | 91 | 1,364 |
| | | CWS | 42 | 23 | 19 | 36 | 44 | 31 | 30 | 35 | 28 | 41 | 39 | 38 | 29 | 435 |
| | | Total | 145 | 99 | 126 | 143 | 169 | 129 | 130 | 137 | 136 | 143 | 160 | 162 | 120 | 1,799 |
| | County Totals | CPS | 195 | 146 | 189 | 194 | 240 | 177 | 189 | 193 | 206 | 202 | 216 | 217 | 194 | 2,558 |
| CWS | | 67 | 52 | 37 | 69 | 84 | 77 | 63 | 72 | 57 | 74 | 62 | 65 | 61 | 840 | |
| Total | | 262 | 198 | 226 | 263 | 324 | 254 | 252 | 265 | 263 | 276 | 278 | 282 | 255 | 3,398 | |

Data in this report is preliminary and may differ from any final report. This report is produced to ensure continuous quality improvement throughout DCF.



Table 5: Monthly Count of CPS Reports and CWS Referrals Assigned to CP&P Local Offices

| County | Local Office | Type of Referral | | | | | | | | | | | | | | Total |
|---------------|-------------------|------------------|------------|------------|------------|------------|------------|------------|------------|------------|------------|------------|------------|------------|--------------|--------------|
| | | | Jun 2015 | Jul 2015 | Aug 2015 | Sep 2015 | Oct 2015 | Nov 2015 | Dec 2015 | Jan 2016 | Feb 2016 | Mar 2016 | Apr 2016 | May 2016 | Jun 2016 | |
| MIDDLESEX | Middlesex Central | CPS | 65 | 52 | 56 | 86 | 86 | 66 | 91 | 70 | 78 | 77 | 72 | 97 | 80 | 976 |
| | | CWS | 17 | 25 | 18 | 28 | 27 | 20 | 27 | 25 | 23 | 25 | 32 | 31 | 26 | 324 |
| | | Total | 82 | 77 | 74 | 114 | 113 | 86 | 118 | 95 | 101 | 102 | 104 | 128 | 106 | 1,300 |
| | Middlesex Coastal | CPS | 128 | 101 | 105 | 110 | 132 | 110 | 119 | 104 | 129 | 152 | 141 | 136 | 101 | 1,568 |
| | | CWS | 44 | 43 | 24 | 33 | 35 | 38 | 33 | 41 | 46 | 39 | 39 | 29 | 35 | 479 |
| | | Total | 172 | 144 | 129 | 143 | 167 | 148 | 152 | 145 | 175 | 191 | 180 | 165 | 136 | 2,047 |
| | Middlesex West | CPS | 132 | 94 | 84 | 105 | 132 | 118 | 114 | 132 | 131 | 133 | 151 | 135 | 117 | 1,578 |
| | | CWS | 37 | 20 | 30 | 38 | 54 | 35 | 51 | 47 | 32 | 53 | 57 | 42 | 28 | 524 |
| | | Total | 169 | 114 | 114 | 143 | 186 | 153 | 165 | 179 | 163 | 186 | 208 | 177 | 145 | 2,102 |
| | County Totals | CPS | 325 | 247 | 245 | 301 | 350 | 294 | 324 | 306 | 338 | 362 | 364 | 368 | 298 | 4,122 |
| CWS | | 98 | 88 | 72 | 99 | 116 | 93 | 111 | 113 | 101 | 117 | 128 | 102 | 89 | 1,327 | |
| Total | | 423 | 335 | 317 | 400 | 466 | 387 | 435 | 419 | 439 | 479 | 492 | 470 | 387 | 5,449 | |
| MONMOUTH | Monmouth North | CPS | 152 | 129 | 119 | 159 | 160 | 134 | 135 | 135 | 184 | 145 | 150 | 165 | 154 | 1,921 |
| | | CWS | 39 | 37 | 33 | 58 | 51 | 50 | 47 | 35 | 44 | 38 | 47 | 40 | 36 | 555 |
| | | Total | 191 | 166 | 152 | 217 | 211 | 184 | 182 | 170 | 228 | 183 | 197 | 205 | 190 | 2,476 |
| | Monmouth South | CPS | 125 | 108 | 111 | 118 | 118 | 118 | 95 | 115 | 130 | 137 | 124 | 121 | 127 | 1,547 |
| | | CWS | 30 | 27 | 38 | 29 | 32 | 41 | 31 | 43 | 55 | 41 | 52 | 40 | 36 | 495 |
| | | Total | 155 | 135 | 149 | 147 | 150 | 159 | 126 | 158 | 185 | 178 | 176 | 161 | 163 | 2,042 |
| | County Totals | CPS | 277 | 237 | 230 | 277 | 278 | 252 | 230 | 250 | 314 | 282 | 274 | 286 | 281 | 3,468 |
| | | CWS | 69 | 64 | 71 | 87 | 83 | 91 | 78 | 78 | 99 | 79 | 99 | 80 | 72 | 1,050 |
| | | Total | 346 | 301 | 301 | 364 | 361 | 343 | 308 | 328 | 413 | 361 | 373 | 366 | 353 | 4,518 |
| | MORRIS | Morris East | CPS | 74 | 61 | 59 | 85 | 95 | 68 | 47 | 73 | 77 | 81 | 63 | 74 | 75 |
| CWS | | | 22 | 27 | 20 | 29 | 26 | 27 | 27 | 24 | 34 | 27 | 23 | 35 | 22 | 343 |
| Total | | | 96 | 88 | 79 | 114 | 121 | 95 | 74 | 97 | 111 | 108 | 86 | 109 | 97 | 1,275 |
| Morris West | | CPS | 92 | 69 | 74 | 100 | 87 | 90 | 98 | 114 | 83 | 73 | 98 | 102 | 86 | 1,166 |
| | | CWS | 45 | 29 | 22 | 36 | 31 | 31 | 43 | 27 | 34 | 36 | 38 | 36 | 45 | 453 |
| | | Total | 137 | 98 | 96 | 136 | 118 | 121 | 141 | 141 | 117 | 109 | 136 | 138 | 131 | 1,619 |
| County Totals | | CPS | 166 | 130 | 133 | 185 | 182 | 158 | 145 | 187 | 160 | 154 | 161 | 176 | 161 | 2,098 |
| | | CWS | 67 | 56 | 42 | 65 | 57 | 58 | 70 | 51 | 68 | 63 | 61 | 71 | 67 | 796 |
| | | Total | 233 | 186 | 175 | 250 | 239 | 216 | 215 | 238 | 228 | 217 | 222 | 247 | 228 | 2,894 |
| OCEAN | | Ocean North | CPS | 145 | 120 | 119 | 118 | 145 | 161 | 125 | 142 | 146 | 150 | 157 | 180 | 152 |
| | CWS | | 38 | 34 | 39 | 43 | 32 | 57 | 43 | 63 | 50 | 43 | 42 | 46 | 44 | 574 |
| | Total | | 183 | 154 | 158 | 161 | 177 | 218 | 168 | 205 | 196 | 193 | 199 | 226 | 196 | 2,434 |
| | Ocean South | CPS | 167 | 178 | 171 | 170 | 162 | 135 | 130 | 151 | 137 | 130 | 127 | 145 | 120 | 1,923 |
| | | CWS | 38 | 44 | 40 | 45 | 44 | 48 | 38 | 47 | 45 | 43 | 39 | 44 | 38 | 553 |
| | | Total | 205 | 222 | 211 | 215 | 206 | 183 | 168 | 198 | 182 | 173 | 166 | 189 | 158 | 2,476 |
| | County Totals | CPS | 312 | 298 | 290 | 288 | 307 | 296 | 255 | 293 | 283 | 280 | 284 | 325 | 272 | 3,783 |
| | | CWS | 76 | 78 | 79 | 88 | 76 | 105 | 81 | 110 | 95 | 86 | 81 | 90 | 82 | 1,127 |
| | | Total | 388 | 376 | 369 | 376 | 383 | 401 | 336 | 403 | 378 | 366 | 365 | 415 | 354 | 4,910 |
| | PASSAIC | Passaic Central | CPS | 152 | 118 | 133 | 159 | 161 | 163 | 178 | 144 | 202 | 169 | 166 | 175 | 183 |
| CWS | | | 58 | 52 | 55 | 55 | 91 | 66 | 68 | 68 | 89 | 89 | 66 | 82 | 55 | 894 |
| Total | | | 210 | 170 | 188 | 214 | 252 | 229 | 246 | 212 | 291 | 258 | 232 | 257 | 238 | 2,997 |
| Passaic North | | CPS | 151 | 116 | 123 | 142 | 153 | 141 | 137 | 152 | 159 | 170 | 162 | 151 | 120 | 1,877 |
| | | CWS | 51 | 31 | 34 | 66 | 56 | 52 | 66 | 57 | 54 | 82 | 61 | 48 | 43 | 701 |
| | | Total | 202 | 147 | 157 | 208 | 209 | 193 | 203 | 209 | 213 | 252 | 223 | 199 | 163 | 2,578 |
| County Totals | | CPS | 303 | 234 | 256 | 301 | 314 | 304 | 315 | 296 | 361 | 339 | 328 | 326 | 303 | 3,980 |
| | | CWS | 109 | 83 | 89 | 121 | 147 | 118 | 134 | 125 | 143 | 171 | 127 | 130 | 98 | 1,595 |
| | | Total | 412 | 317 | 345 | 422 | 461 | 422 | 449 | 421 | 504 | 510 | 455 | 456 | 401 | 5,575 |
| SALEM | | Salem | CPS | 66 | 51 | 35 | 77 | 47 | 75 | 58 | 72 | 43 | 78 | 61 | 64 | 57 |
| | CWS | | 15 | 17 | 18 | 25 | 25 | 14 | 23 | 22 | 24 | 16 | 28 | 18 | 23 | 268 |
| | Total | | 81 | 68 | 53 | 102 | 72 | 89 | 81 | 94 | 67 | 94 | 89 | 82 | 80 | 1,052 |
| | County Totals | CPS | 66 | 51 | 35 | 77 | 47 | 75 | 58 | 72 | 43 | 78 | 61 | 64 | 57 | 784 |
| | | CWS | 15 | 17 | 18 | 25 | 25 | 14 | 23 | 22 | 24 | 16 | 28 | 18 | 23 | 268 |
| | | Total | 81 | 68 | 53 | 102 | 72 | 89 | 81 | 94 | 67 | 94 | 89 | 82 | 80 | 1,052 |
| SOMERSET | Somerset | CPS | 122 | 126 | 88 | 120 | 121 | 121 | 104 | 104 | 120 | 124 | 115 | 136 | 129 | 1,530 |
| | | CWS | 41 | 32 | 40 | 35 | 32 | 36 | 39 | 37 | 40 | 41 | 37 | 33 | 31 | 474 |
| | | Total | 163 | 158 | 128 | 155 | 153 | 157 | 143 | 141 | 160 | 165 | 152 | 169 | 160 | 2,004 |
| | County Totals | CPS | 122 | 126 | 88 | 120 | 121 | 121 | 104 | 104 | 120 | 124 | 115 | 136 | 129 | 1,530 |
| | | CWS | 41 | 32 | 40 | 35 | 32 | 36 | 39 | 37 | 40 | 41 | 37 | 33 | 31 | 474 |
| | | Total | 163 | 158 | 128 | 155 | 153 | 157 | 143 | 141 | 160 | 165 | 152 | 169 | 160 | 2,004 |

Data in this report is preliminary and may differ from any final report. This report is produced to ensure continuous quality improvement throughout DCF.



Table 5: Monthly Count of CPS Reports and CWS Referrals Assigned to CP&P Local Offices

| County | Local Office | Type of Referral | | | | | | | | | | | | | | Total |
|------------------------------------------|---------------|------------------|--------------|--------------|--------------|--------------|--------------|--------------|--------------|--------------|--------------|--------------|--------------|--------------|--------------|---------------|
| | | | Jun 2015 | Jul 2015 | Aug 2015 | Sep 2015 | Oct 2015 | Nov 2015 | Dec 2015 | Jan 2016 | Feb 2016 | Mar 2016 | Apr 2016 | May 2016 | Jun 2016 | |
| SUSSEX | Sussex | CPS | 77 | 86 | 71 | 73 | 83 | 72 | 68 | 82 | 83 | 76 | 77 | 71 | 68 | 987 |
| | | CWS | 35 | 17 | 13 | 16 | 21 | 31 | 27 | 13 | 30 | 29 | 17 | 17 | 23 | 289 |
| | | Total | 112 | 103 | 84 | 89 | 104 | 103 | 95 | 95 | 113 | 105 | 94 | 88 | 91 | 1,276 |
| | County Totals | CPS | 77 | 86 | 71 | 73 | 83 | 72 | 68 | 82 | 83 | 76 | 77 | 71 | 68 | 987 |
| | | CWS | 35 | 17 | 13 | 16 | 21 | 31 | 27 | 13 | 30 | 29 | 17 | 17 | 23 | 289 |
| | | Total | 112 | 103 | 84 | 89 | 104 | 103 | 95 | 95 | 113 | 105 | 94 | 88 | 91 | 1,276 |
| UNION | Union Central | CPS | 83 | 56 | 52 | 65 | 67 | 64 | 71 | 74 | 85 | 78 | 89 | 105 | 67 | 956 |
| | | CWS | 20 | 25 | 26 | 24 | 24 | 14 | 27 | 32 | 29 | 30 | 24 | 23 | 29 | 327 |
| | | Total | 103 | 81 | 78 | 89 | 91 | 78 | 98 | 106 | 114 | 108 | 113 | 128 | 96 | 1,283 |
| | Union East | CPS | 80 | 51 | 49 | 67 | 74 | 68 | 91 | 75 | 78 | 99 | 99 | 100 | 79 | 1,010 |
| | | CWS | 32 | 8 | 23 | 27 | 35 | 26 | 34 | 25 | 30 | 25 | 28 | 25 | 28 | 346 |
| | | Total | 112 | 59 | 72 | 94 | 109 | 94 | 125 | 100 | 108 | 124 | 127 | 125 | 107 | 1,356 |
| | Union West | CPS | 62 | 59 | 50 | 70 | 77 | 58 | 65 | 65 | 79 | 84 | 73 | 87 | 60 | 889 |
| | | CWS | 28 | 29 | 15 | 23 | 27 | 27 | 30 | 28 | 30 | 34 | 23 | 33 | 32 | 359 |
| | | Total | 90 | 88 | 65 | 93 | 104 | 85 | 95 | 93 | 109 | 118 | 96 | 120 | 92 | 1,248 |
| | County Totals | CPS | 225 | 166 | 151 | 202 | 218 | 190 | 227 | 214 | 242 | 261 | 261 | 292 | 206 | 2,855 |
| | | CWS | 80 | 62 | 64 | 74 | 86 | 67 | 91 | 85 | 89 | 89 | 75 | 81 | 89 | 1,032 |
| | | Total | 305 | 228 | 215 | 276 | 304 | 257 | 318 | 299 | 331 | 350 | 336 | 373 | 295 | 3,887 |
| WARREN | Warren | CPS | 78 | 71 | 71 | 81 | 87 | 58 | 55 | 72 | 64 | 60 | 68 | 74 | 67 | 906 |
| | | CWS | 24 | 18 | 23 | 20 | 20 | 23 | 23 | 21 | 23 | 17 | 31 | 32 | 21 | 296 |
| | | Total | 102 | 89 | 94 | 101 | 107 | 81 | 78 | 93 | 87 | 77 | 99 | 106 | 88 | 1,202 |
| | County Totals | CPS | 78 | 71 | 71 | 81 | 87 | 58 | 55 | 72 | 64 | 60 | 68 | 74 | 67 | 906 |
| | | CWS | 24 | 18 | 23 | 20 | 20 | 23 | 23 | 21 | 23 | 17 | 31 | 32 | 21 | 296 |
| | | Total | 102 | 89 | 94 | 101 | 107 | 81 | 78 | 93 | 87 | 77 | 99 | 106 | 88 | 1,202 |
| County CPS Referral Total | | CPS | 4,508 | 3,842 | 3,714 | 4,477 | 4,797 | 4,098 | 4,252 | 4,378 | 4,657 | 4,632 | 4,714 | 4,882 | 4,237 | 57,188 |
| County CWS Referral Total | | CWS | 1,385 | 1,223 | 1,220 | 1,446 | 1,572 | 1,430 | 1,492 | 1,526 | 1,573 | 1,618 | 1,494 | 1,573 | 1,411 | 18,963 |
| County Referral Total | | Total | 5,893 | 5,065 | 4,934 | 5,923 | 6,369 | 5,528 | 5,744 | 5,904 | 6,230 | 6,250 | 6,208 | 6,455 | 5,648 | 76,151 |
| Central Region IAIU | CPS | 54 | 63 | 41 | 53 | 52 | 56 | 62 | 44 | 53 | 46 | 59 | 55 | 53 | 691 | |
| | CWS | 0 | 0 | 0 | 0 | 0 | 0 | 0 | 0 | 0 | 0 | 0 | 0 | 0 | 0 | |
| | Total | 54 | 63 | 41 | 53 | 52 | 56 | 62 | 44 | 53 | 46 | 59 | 55 | 53 | 691 | |
| Metro Region IAIU | CPS | 66 | 24 | 30 | 36 | 50 | 48 | 46 | 43 | 60 | 64 | 60 | 68 | 61 | 656 | |
| | CWS | 0 | 0 | 0 | 0 | 0 | 0 | 0 | 0 | 0 | 0 | 0 | 0 | 0 | 0 | |
| | Total | 66 | 24 | 30 | 36 | 50 | 48 | 46 | 43 | 60 | 64 | 60 | 68 | 61 | 656 | |
| Northern Region IAIU | CPS | 65 | 56 | 43 | 45 | 66 | 58 | 44 | 58 | 58 | 66 | 71 | 70 | 66 | 766 | |
| | CWS | 0 | 0 | 0 | 0 | 0 | 0 | 0 | 0 | 0 | 0 | 0 | 0 | 0 | 0 | |
| | Total | 65 | 56 | 43 | 45 | 66 | 58 | 44 | 58 | 58 | 66 | 71 | 70 | 66 | 766 | |
| Southern Region IAIU | CPS | 88 | 61 | 59 | 60 | 83 | 72 | 61 | 79 | 64 | 76 | 90 | 73 | 92 | 958 | |
| | CWS | 0 | 0 | 0 | 0 | 0 | 0 | 0 | 0 | 0 | 0 | 0 | 0 | 0 | 0 | |
| | Total | 88 | 61 | 59 | 60 | 83 | 72 | 61 | 79 | 64 | 76 | 90 | 73 | 92 | 958 | |
| IAIU CPS Subtotal | | CPS | 273 | 204 | 173 | 194 | 251 | 234 | 213 | 224 | 235 | 252 | 280 | 266 | 272 | 3,071 |
| IAIU CWS Subtotal | | CWS | 0 | 0 | 0 | 0 | 0 | 0 | 0 | 0 | 0 | 0 | 0 | 0 | 0 | 0 |
| IAIU Subtotal | | Total | 273 | 204 | 173 | 194 | 251 | 234 | 213 | 224 | 235 | 252 | 280 | 266 | 272 | 3,071 |
| County and IAIU CPS Subtotal | | CPS | 4,781 | 4,046 | 3,887 | 4,671 | 5,048 | 4,332 | 4,465 | 4,602 | 4,892 | 4,884 | 4,994 | 5,148 | 4,509 | 60,259 |
| County and IAIU CWS Subtotal | | CWS | 1,385 | 1,223 | 1,220 | 1,446 | 1,573 | 1,430 | 1,492 | 1,526 | 1,573 | 1,618 | 1,494 | 1,573 | 1,411 | 18,964 |
| Unable to Determine⁽¹⁾ | | Total | 153 | 142 | 124 | 153 | 136 | 131 | 114 | 128 | 126 | 165 | 115 | 149 | 140 | 1,776 |
| Other Offices | | Total | 4 | 2 | 3 | 1 | 1 | 1 | 3 | 1 | 5 | 2 | 4 | 1 | 3 | 31 |
| Grand Total | | Total | 6,323 | 5,413 | 5,234 | 6,271 | 6,758 | 5,894 | 6,074 | 6,257 | 6,596 | 6,669 | 6,607 | 6,871 | 6,063 | 81,030 |

⁽¹⁾CPS Reports or CWS Referrals not assigned to an office through the Assignment Designee, but were assigned to an office for an assessment or investigation.