



Child Protection and Permanency

Monthly Screening and Investigation Report June 2020

Christine Norbut Beyer, MSW
Commissioner



Table of Contents

Table 1: NJ State Central Registry Activity: Monthly Child Abuse and Neglect Hotline Calls, Intakes and Assignments to Child Protection & Permanency (CP&P) Offices

Chart 1: CP&P Annual Trends in Child Protection Services (CPS) Reports and Child Welfare Services (CWS) Referrals

Table 2: Assignments to CP&P Offices: CPS Reports and CWS Referrals

Table 3: Source of CPS Reports and CWS Referrals

Table 4: Monthly Count of CPS Reports and CWS Referrals Assigned to Counties

Table 5: Monthly Count of CPS Reports and CWS Referrals Assigned to CP&P Local Offices

CP&P Annual Trends in CPS Reports and CWS Referrals

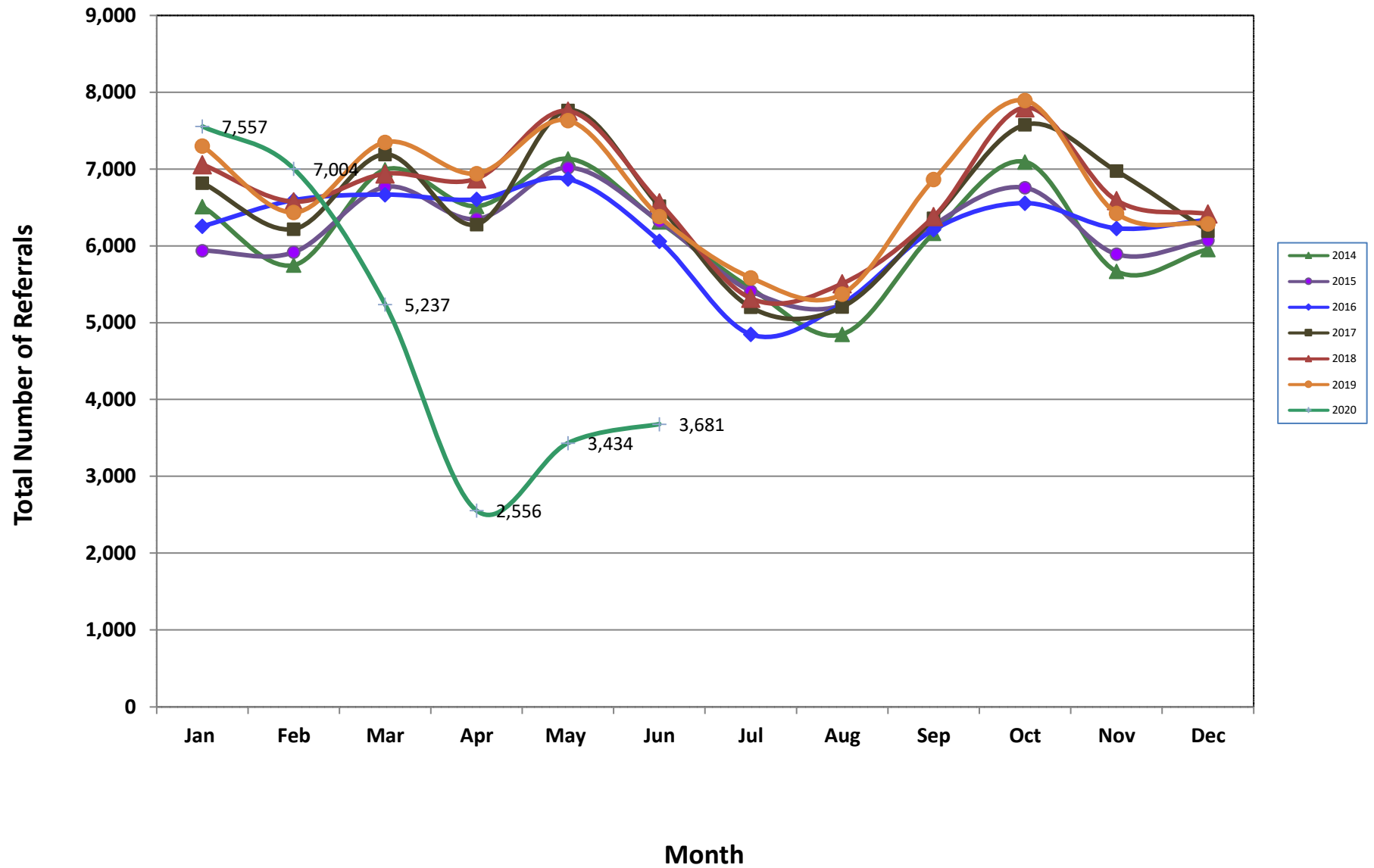


Table 1: NJ State Central Registry Activity: Monthly Child Abuse and Neglect Hotline Calls, Intakes and Assignments to CP&P Offices^{1,2,7}

2019-2020	Hotline Call Activity				Intakes Recorded in NJ SPIRIT ^{6,8}												Assignments to CP&P Offices				
	Total Calls to SCR ³	Abandon Calls ⁴	Average Time to Answer (seconds)	Resulting NJS Intakes ⁵	CPS Reports		CWS Referrals		No Action Required (NAR)		Related Information (RI)		Information & Referral (I&R)		Information Only (IO)		CPS Reports		CWS Referrals		Total
					n	%	n	%	n	%	n	%	n	%	n	%	n	%	n	%	
June 2019	13,596	1,287	107	14,057	4,872	33.0%	1,507	10.7%	268	1.9%	3,537	25.2%	1,703	12.1%	2,168	15.4%	4,874	76.4%	1,509	23.6%	6,383
July 2019	12,135	874	73	12,821	4,277	33.4%	1,309	10.2%	267	2.1%	3,250	25.3%	1,452	11.3%	2,266	17.7%	4,277	76.6%	1,309	23.4%	5,586
August 2019	11,044	482	38	12,291	4,068	33.1%	1,303	10.6%	222	1.8%	3,113	25.3%	1,381	11.2%	2,204	17.9%	4,068	75.7%	1,306	24.3%	5,374
September 2019	13,737	991	72	14,995	5,315	35.4%	1,551	10.3%	266	1.8%	3,695	24.6%	1,790	11.9%	2,378	15.9%	5,315	77.4%	1,551	22.6%	6,866
October 2019	15,981	1,270	95	16,503	5,968	36.2%	1,923	11.7%	260	1.6%	4,039	24.5%	1,959	11.9%	2,354	14.3%	5,968	75.6%	1,926	24.4%	7,894
November 2019	12,937	1,128	92	14,799	4,991	33.7%	1,434	9.7%	205	1.4%	3,681	24.9%	1,741	11.8%	2,747	18.6%	4,991	77.7%	1,432	22.3%	6,423
December 2019	12,832	1,147	102	13,166	4,855	36.9%	1,432	10.9%	203	1.5%	3,204	24.3%	1,478	11.2%	1,994	15.1%	4,855	77.2%	1,434	22.8%	6,289
January 2020	15,893	2,070	141	15,573	5,715	36.7%	1,841	11.8%	227	1.5%	3,717	23.9%	1,976	12.7%	2,097	13.5%	5,715	75.6%	1,842	24.4%	7,557
February 2020	14,714	1,744	150	14,684	5,380	36.6%	1,625	11.1%	226	1.5%	3,605	24.6%	1,854	12.6%	1,994	13.6%	5,380	76.8%	1,624	23.2%	7,004
Mar 2020	12,263	1,262	11	12,398	4,171	33.6%	1,063	8.6%	199	1.6%	3,075	24.8%	1,885	15.2%	2,005	16.2%	4,172	79.7%	1,065	20.3%	5,237
Apr 2020	7,500	548	76	7,917	2,149	27.1%	407	5.1%	196	2.5%	1,852	23.4%	1,866	23.6%	1,447	18.3%	2,149	84.1%	407	15.9%	2,556
May 2020	9,654	1,808	249	9,402	2,897	30.8%	537	5.7%	137	1.5%	2,342	24.9%	1,974	21.0%	1,515	16.1%	2,897	84.4%	537	15.6%	3,434
Jun 2020	10,871	3,782	305	9,131	3,045	33.3%	636	7.0%	133	1.5%	2,281	25.0%	1,554	17.0%	1,482	16.2%	3,045	82.7%	636	17.3%	3,681
	12,551	1,415	116	12,903	4,439	34.4%	1,274	9.9%	216	1.7%	3,184	24.7%	1,739	13.5%	2,050	15.9%	4,439	77.7%	1,275	22.3%	5,714
Overall Total	163,157	18,393		167,737	57,703		16,568		2,809		41,391		22,613		26,651		57,706	77.7%	16,578	22.3%	74,284

¹ Comes from three distinct sources: (1) the Automatic Call Distribution (ACD) phone system; which keeps a count of the number of calls and call routing; (2) Monthly NJSpirit Intakes; which record decision making on calls received by hotline screeners, and (3) NJSpirit extracts of assigned CWS Referrals and CPS Reports.

² The number of Intakes, CPS Reports, and CWS Referrals are based on an extract from NJSpirit.

Data extracted by the Office of Research, Evaluation, and Reporting on **July 07, 2020** includes all Intakes, CPS Reports, and CWS Referrals received from **June 01, 2020** through **June 30, 2020**.

³ The number calls received through the ACD System that were directed to a screener from any call-in phone number.

⁴ The number of calls received through the ACD System that are abandoned either while waiting in queue or while ringing.

⁵ The number of Intakes entered in NJSpirit from the number of calls received.

⁶ The number of Intakes recorded in NJSpirit, by type of Intake. There is not a one-to-one relationship between an ACD call and an Intake; multiple calls to State Central Registry (SCR) may result in a single Intake, or one call may result in multiple Intakes.

⁷ Intake: The process of documenting: a report of alleged abuse or neglect of a child (CPS); a request for services on behalf of a child, or a referral of a child for services (CWS); a call in which the caller provides additional or clarifying information about a current service case or active investigation (RI); informing a caller of, or referring a caller to, services available from other private or public sources (I&R); a call that requires no action by CP&P (NAR); or a response to a simple inquiry (IO).

Table 2: Assignments to CP&P Offices: CPS Reports and CWS Referrals¹

Intake Date ³		CPS Reports ²	CWS Referrals ²	Total Assignments ²
2015	Jan 2015	4,549	1,391	5,940
	Feb 2015	4,574	1,345	5,919
	Mar 2015	5,187	1,580	6,767
	Apr 2015	4,967	1,384	6,351
	May 2015	5,457	1,561	7,018
	Jun 2015	4,887	1,436	6,323
	Jul 2015	4,140	1,273	5,413
	Aug 2015	3,978	1,256	5,234
	Sep 2015	4,776	1,495	6,271
	Oct 2015	5,139	1,619	6,758
	Nov 2015	4,417	1,477	5,894
	Dec 2015	4,530	1,544	6,074
	Total	56,601	17,361	73,962
2016	Jan 2016	4,686	1,571	6,257
	Feb 2016	4,974	1,622	6,596
	Mar 2016	5,000	1,669	6,669
	Apr 2016	5,065	1,542	6,607
	May 2016	5,238	1,633	6,871
	Jun 2016	4,602	1,461	6,063
	Jul 2016	3,663	1,187	4,850
	Aug 2016	3,941	1,307	5,248
	Sep 2016	4,654	1,559	6,213
	Oct 2016	4,935	1,622	6,557
	Nov 2016	4,677	1,552	6,229
	Dec 2016	4,762	1,580	6,342
	Total	56,197	18,305	74,502
2017	Jan 2017	5,111	1,708	6,819
	Feb 2017	4,716	1,504	6,220
	Mar 2017	5,349	1,843	7,192
	Apr 2017	4,790	1,490	6,280
	May 2017	5,847	1,919	7,766
	Jun 2017	4,853	1,665	6,518
	Jul 2017	3,814	1,389	5,203
	Aug 2017	3,866	1,340	5,206
	Sep 2017	4,719	1,643	6,362
	Oct 2017	5,613	1,966	7,579
	Nov 2017	5,223	1,753	6,976
	Dec 2017	4,601	1,594	6,195
	Total	58,502	19,814	78,316

Table 2: Assignments to CP&P Offices: CPS Reports and CWS Referrals¹

Intake Date ³		CPS Reports ²	CWS Referrals ²	Total Assignments ²
2018	Jan 2018	5,276	1,784	7,060
	Feb 2018	4,933	1,644	6,577
	Mar 2018	5,212	1,727	6,939
	Apr 2018	5,275	1,601	6,876
	May 2018	5,920	1,836	7,756
	Jun 2018	4,948	1,615	6,563
	Jul 2018	4,011	1,308	5,319
	Aug 2018	4,102	1,408	5,510
	Sep 2018	4,748	1,634	6,382
	Oct 2018	5,790	2,011	7,801
	Nov 2018	4,973	1,620	6,593
	Dec 2018	4,891	1,527	6,418
	Total	60,079	19,715	79,794
2019	Jan 2019	5,443	1,858	7,301
	Feb 2019	4,811	1,628	6,439
	Mar 2019	5,677	1,824	7,501
	Apr 2019	5,313	1,630	6,943
	May 2019	5,853	1,781	7,634
	Jun 2019	4,874	1,509	6,383
	Jul 2019	4,277	1,309	5,586
	Aug 2019	4,068	1,306	5,374
	Sep 2019	5,315	1,551	6,866
	Oct 2019	5,968	1,926	7,894
	Nov 2019	4,991	1,432	6,423
	Dec 2019	4,855	1,434	6,289
	Total	61,445	1,434	6,289
2020	Jan 2020	5,715	1,842	7,557
	Feb 2020	5,380	1,624	7,004
	Mar 2020	4,172	1,065	5,237
	Apr 2020	2,149	407	2,556
	May 2020	2,897	537	3,434
	Jun 2020	3,045	636	3,681
	Total	23,358	6,111	29,469
Grand Total		316,182	100,494	416,676

Table 3: Source of CPS Reports and CWS Referrals

CPS Reports and CWS Referrals	Source	June 2019	July 2019	Aug 2019	Sep 2019	Oct 2019	Nov 2019	Dec 2019	Jan 2020	Feb 2020	Mar 2020	Apr 2020	May 2020	Jun 2020		13 Month Total	
	School Staff	1,163	211	90	1,479	2,314	1,703	1,562	2,327	2,148	1,188	143	210	119	3%	14,657	20%
	Healthcare Provider	970	964	917	963	1,059	886	923	990	937	760	499	656	775	21%	11,299	15%
	Law Enforcement	1,437	1,416	1,320	1,432	1,425	1,260	1,247	1,295	1,349	1,197	792	1,086	1,140	31%	16,396	22%
	Government Agency	387	448	391	417	457	343	367	452	342	240	134	198	238	6%	4,414	6%
	Parent	492	549	583	534	529	425	448	509	435	395	219	281	326	9%	5,725	8%
	Relative/Friend/Neighbor	418	482	479	505	427	384	388	411	334	345	232	296	326	9%	5,027	7%
	Anonymous	629	493	544	615	674	556	508	600	603	437	222	284	294	8%	6,459	9%
	CP&P	104	126	129	102	110	82	89	106	74	67	28	31	42	1%	1,090	1%
	Court/Legal	158	189	223	180	207	160	158	210	162	104	40	59	50	1%	1,900	3%
	Community Group/Individual	242	279	268	257	310	287	227	317	279	199	111	143	157	4%	3,076	4%
	Facility Staff (incl Correctional Facility)	76	88	92	74	79	67	83	79	93	40	21	41	43	1%	876	1%
	Child (Self)	37	50	47	45	34	27	37	28	21	25	7	17	17	0%	392	1%
	Other	248	277	272	249	250	235	242	213	210	227	105	130	149	4%	2,807	4%
Daycare/Babysitter	22	14	19	14	19	8	10	20	17	13	3	2	5	0%	166	0%	
Total	6,383	6,383	6,383	6,866	7,894	6,423	6,289	7,557	7,004	5,237	2,556	3,434	3,681		74,284		

Table 4: Monthly Count of CPS Reports and CWS Referrals Assigned to Counties

County														Average Number of Assignments Last 13 Months	May 20 to Jun 20 Numerical Difference
	June 2019	July 2019	Aug 2019	Sep 2019	Oct 2019	Nov 2019	Dec 2019	Jan 2020	Feb 2020	Mar 2020	Apr 2020	May 2020	Jun 2020		
Atlantic	279	235	235	282	302	258	261	292	298	244	121	161	180	242	19
Bergen	376	273	285	402	471	423	375	457	418	281	145	189	194	330	5
Burlington	288	262	264	352	385	305	285	383	368	256	133	181	185	281	4
Camden	484	442	422	572	625	523	508	603	581	437	216	305	325	465	20
Cape May	82	96	80	112	105	78	78	85	58	70	33	50	66	76	16
Cumberland	214	187	158	206	256	216	221	238	216	171	96	116	130	187	14
Essex	693	604	622	713	848	703	651	790	735	525	249	364	366	605	2
Gloucester	265	250	232	259	279	271	266	285	297	221	111	160	177	236	17
Hudson	422	346	307	400	535	437	415	558	449	347	137	226	199	368	-27
Hunterdon	64	42	48	74	60	63	66	67	48	39	22	30	24	50	-6
Mercer	298	264	265	276	337	290	267	344	279	210	106	144	164	250	20
Middlesex	412	337	357	489	558	426	488	580	475	405	205	231	283	404	52
Monmouth	376	295	287	378	437	350	349	411	381	301	166	196	233	320	37
Morris	200	181	187	266	255	226	212	264	273	194	85	124	137	200	13
Ocean	386	385	337	428	525	387	406	482	446	355	177	257	264	372	7
Passaic	431	356	327	443	519	390	409	456	460	353	143	213	219	363	6
Salem	57	83	85	92	98	78	69	79	82	75	35	44	53	72	9
Somerset	155	155	114	180	202	155	146	197	189	126	66	92	82	143	-10
Sussex	104	83	107	125	129	91	104	114	116	73	47	48	51	92	3
Union	317	276	252	321	400	345	327	383	383	246	137	147	190	286	43
Warren	102	82	88	97	96	93	82	98	101	65	54	50	56	82	6
County Subtotals	6,005	5,234	5,059	6,467	7,422	6,108	5,985	7,166	6,653	4,994	2,484	3,328	3,578	5,422	250
Central Region IAIU	57	58	41	60	70	49	48	67	64	34	10	6	23	45	17
Metro Region IAIU	41	36	42	43	80	45	41	46	69	33	3	11	2	38	-9
Northern Region IAIU	64	53	37	68	77	45	45	59	42	44	6	12	10	43	-2
Southern Region IAIU	69	66	57	83	75	59	62	82	61	51	12	18	20	55	2
IAIU Subtotals	231	213	177	254	302	198	196	254	236	162	31	47	55	181	8
¹ Unable to Determine	147	138	138	145	170	117	108	135	113	79	39	59	48	110	-11
Other Offices	0	1	0	0	0	0	0	2	2	2	2	0	0	1	0
Grand Total	6,383	5,586	5,374	6,866	7,894	6,423	6,289	7,557	7,004	5,237	2,556	3,434	3,681	5,714	247

¹CPS Reports or CWS Referrals not assigned to an office through the Assignment Designee, but were assigned to an office for an assessment or investigation.

Table 5: Monthly Count of CPS Reports and CWS Referrals Assigned to CP&P Local Offices

County	Local Office	Type of Referral	2019													Total
			June 2019	July 2019	Aug 2019	Sep 2019	Oct 2019	Nov 2019	Dec 2019	Jan 2020	Feb 2020	Mar 2020	Apr 2020	May 2020	Jun 2020	
ATLANTIC	Atlantic East	CPS	126	110	102	127	134	117	133	120	116	115	55	70	82	1,407
		CWS	34	34	30	46	38	26	31	33	55	30	9	16	25	407
		Total	160	144	132	173	172	143	164	153	171	145	64	86	107	1,814
	Atlantic West	CPS	86	69	77	76	86	99	79	101	95	82	50	64	57	1,021
		CWS	33	22	26	33	44	16	18	38	32	17	7	11	16	313
		Total	119	91	103	109	130	115	97	139	127	99	57	75	73	1,334
	County Totals	CPS	212	179	179	203	220	216	212	221	211	197	105	134	139	2,428
		CWS	67	56	56	79	82	42	49	71	87	47	16	27	41	720
		Total	279	235	235	282	302	258	261	292	298	244	121	161	180	3,148
BERGEN	Bergen Central	CPS	122	91	98	131	150	137	102	145	135	81	55	66	66	1,379
		CWS	36	23	31	46	57	47	51	57	47	24	12	13	21	465
		Total	158	114	129	177	207	184	153	202	182	105	67	79	87	1,844
	Bergen South	CPS	155	121	117	166	192	174	171	182	179	126	67	90	92	1,832
		CWS	63	38	39	59	72	65	51	73	57	50	11	20	15	613
		Total	218	159	156	225	264	239	222	255	236	176	78	110	107	2,445
	County Totals	CPS	277	212	215	297	342	311	273	327	314	207	122	156	158	3,211
		CWS	99	61	70	105	129	112	102	130	104	74	23	33	36	1,078
		Total	376	273	285	402	471	423	375	457	418	281	145	189	194	4,289
BURLINGTON	Burlington East	CPS	117	127	108	126	145	114	109	147	142	99	55	74	95	1,458
		CWS	34	21	38	55	39	44	48	50	40	22	12	17	11	431
		Total	151	148	146	181	184	158	157	197	182	121	67	91	106	1,889
	Burlington West	CPS	96	85	92	133	153	113	96	143	141	106	51	76	68	1,353
		CWS	41	29	26	38	48	34	32	43	45	29	15	14	11	405
		Total	137	114	118	171	201	147	128	186	186	135	66	90	79	1,758
	County Totals	CPS	213	212	200	259	298	227	205	290	283	205	106	150	163	2,811
		CWS	75	50	64	93	87	78	80	93	85	51	27	31	22	836
		Total	288	262	264	352	385	305	285	383	368	256	133	181	185	3,647
CAMDEN	Camden Central	CPS	112	87	106	127	122	100	118	112	119	99	40	68	86	1,296
		CWS	27	16	22	27	40	28	24	43	29	14	12	11	15	308
		Total	139	103	128	154	162	128	142	155	148	113	52	79	101	1,604
	Camden East	CPS	91	83	70	103	111	114	100	94	102	82	45	54	59	1,108
		CWS	27	36	15	34	30	31	30	44	32	16	7	8	14	324
		Total	118	119	85	137	141	145	130	138	134	98	52	62	73	1,432
	Camden North	CPS	93	77	84	111	135	101	84	119	117	96	39	56	71	1,183
		CWS	26	32	25	47	40	37	26	31	28	26	9	15	12	354
		Total	119	109	109	158	175	138	110	150	145	122	48	71	83	1,537
	Camden South	CPS	77	83	68	91	113	88	96	125	122	82	54	73	59	1,131
		CWS	31	28	32	32	34	24	30	35	32	22	10	20	9	339
		Total	108	111	100	123	147	112	126	160	154	104	64	93	68	1,470
	County Totals	CPS	373	330	328	432	481	403	398	450	460	359	178	251	275	4,718
		CWS	111	112	94	140	144	120	110	153	121	78	38	54	50	1,325
		Total	484	442	422	572	625	523	508	603	581	437	216	305	325	6,043
CAPE MAY	Cape May	CPS	63	72	67	87	75	63	62	68	42	56	29	37	55	776
		CWS	19	24	13	25	30	15	16	17	16	14	4	13	11	217
		Total	82	96	80	112	105	78	78	85	58	70	33	50	66	993
	County Totals	CPS	63	72	67	87	75	63	62	68	42	56	29	37	55	776
		CWS	19	24	13	25	30	15	16	17	16	14	4	13	11	217
		Total	82	96	80	112	105	78	78	85	58	70	33	50	66	993
CUMBERLAND	Cumberland East	CPS	50	45	50	51	59	47	61	57	52	44	24	40	44	624
		CWS	24	12	13	9	16	19	9	11	12	11	10	8	6	160
		Total	74	57	63	60	75	66	70	68	64	55	34	48	50	784
	Cumberland West	CPS	118	101	75	118	139	119	126	141	121	91	53	56	66	1,324
		CWS	22	29	20	28	42	31	25	29	31	25	9	12	14	317
		Total	140	130	95	146	181	150	151	170	152	116	62	68	80	1,641
	County Totals	CPS	168	146	125	169	198	166	187	198	173	135	77	96	110	1,948
		CWS	46	41	33	37	58	50	34	40	43	36	19	20	20	477
		Total	214	187	158	206	256	216	221	238	216	171	96	116	130	2,425



Table 5: Monthly Count of CPS Reports and CWS Referrals Assigned to CP&P Local Offices

County	Local Office	Type of Referral	2019													Total
			June 2019	July 2019	Aug 2019	Sep 2019	Oct 2019	Nov 2019	Dec 2019	Jan 2020	Feb 2020	Mar 2020	Apr 2020	May 2020	Jun 2020	
ESSEX	Essex Central	CPS	93	94	88	111	121	96	98	106	99	71	58	60	58	1,153
		CWS	36	36	25	32	48	32	28	35	36	21	6	8	8	351
		Total	129	130	113	143	169	128	126	141	135	92	64	68	66	1,504
	Essex North	CPS	62	53	58	65	79	75	63	78	92	50	24	28	39	766
		CWS	32	17	31	27	24	23	22	30	26	19	2	18	8	279
		Total	94	70	89	92	103	98	85	108	118	69	26	46	47	1,045
	Essex South	CPS	71	48	46	66	66	83	71	87	64	65	22	32	46	767
		CWS	23	15	26	20	35	24	21	25	24	14	7	7	10	251
		Total	94	63	72	86	101	107	92	112	88	79	29	39	56	1018
	Newark Center City	CPS	85	86	95	101	118	83	93	121	114	74	33	59	53	1115
		CWS	31	27	23	36	35	30	35	29	33	17	8	12	6	322
		Total	116	113	118	137	153	113	128	150	147	91	41	71	59	1437
	Newark Northeast	CPS	89	84	77	94	116	98	74	97	95	77	38	47	55	1041
		CWS	25	29	22	28	35	27	19	35	25	19	7	5	17	293
		Total	114	113	99	122	151	125	93	132	120	96	45	52	72	1334
Newark South	CPS	118	85	90	104	134	107	95	120	94	74	38	69	50	1178	
	CWS	28	30	41	29	37	25	32	27	33	24	6	19	16	347	
	Total	146	115	131	133	171	132	127	147	127	98	44	88	66	1525	
County Totals	CPS	518	450	454	541	634	542	494	609	558	411	213	295	301	6020	
	CWS	175	154	168	172	214	161	157	181	177	114	36	69	65	1843	
	Total	693	604	622	713	848	703	651	790	735	525	249	364	366	7863	
GLOUCESTER	Gloucester East	CPS	114	80	92	98	109	94	102	111	110	90	47	67	71	1185
		CWS	23	26	21	19	25	28	24	26	32	16	9	7	14	270
		Total	137	106	113	117	134	122	126	137	142	106	56	74	85	1455
	Gloucester West	CPS	105	115	85	120	114	122	107	116	117	88	45	76	75	1285
		CWS	23	29	34	22	31	27	33	32	38	27	10	10	17	333
		Total	128	144	119	142	145	149	140	148	155	115	55	86	92	1618
	County Totals	CPS	219	195	177	218	223	216	209	227	227	178	92	143	146	2470
		CWS	46	55	55	41	56	55	57	58	70	43	19	17	31	603
		Total	265	250	232	259	279	271	266	285	297	221	111	160	177	3073
HUDSON	Hudson Central	CPS	101	102	94	90	122	112	103	141	99	88	37	69	62	1220
		CWS	19	32	22	35	41	37	26	48	37	32	12	12	19	372
		Total	120	134	116	125	163	149	129	189	136	120	49	81	81	1592
	Hudson North	CPS	65	57	36	78	97	82	67	85	85	66	23	42	34	817
		CWS	26	21	22	20	29	26	23	33	25	15	10	13	12	275
		Total	91	78	58	98	126	108	90	118	110	81	33	55	46	1092
	Hudson South	CPS	51	37	45	46	65	50	49	77	62	44	11	31	23	591
		CWS	36	14	14	13	25	13	19	27	13	12	5	8	7	206
		Total	87	51	59	59	90	63	68	104	75	56	16	39	30	797
	Hudson West	CPS	102	58	53	86	110	87	101	108	100	65	34	45	35	984
		CWS	22	25	21	32	46	30	27	39	28	25	5	6	7	313
		Total	124	83	74	118	156	117	128	147	128	90	39	51	42	1297
	County Totals	CPS	319	254	228	300	394	331	320	411	346	263	105	187	154	3612
		CWS	103	92	79	100	141	106	95	147	103	84	32	39	45	1166
		Total	422	346	307	400	535	437	415	558	449	347	137	226	199	4778
HUNTERDON	Hunterdon	CPS	47	31	33	56	46	45	51	48	37	30	20	27	20	491
		CWS	17	11	15	18	14	18	15	19	11	9	2	3	4	156
		Total	64	42	48	74	60	63	66	67	48	39	22	30	24	647
	County Totals	CPS	47	31	33	56	46	45	51	48	37	30	20	27	20	491
		CWS	17	11	15	18	14	18	15	19	11	9	2	3	4	156
Total	64	42	48	74	60	63	66	67	48	39	22	30	24	647		
MERCER	Mercer North	CPS	95	81	90	113	100	111	106	120	108	89	45	50	76	1184
		CWS	46	45	24	30	52	27	36	30	41	17	14	16	11	389
		Total	141	126	114	143	152	138	142	150	149	106	59	66	87	1573
	Mercer South	CPS	122	112	116	107	140	108	102	144	102	85	36	65	65	1304
		CWS	35	26	35	26	45	44	23	50	28	19	11	13	12	367
		Total	157	138	151	133	185	152	125	194	130	104	47	78	77	1671
	County Totals	CPS	217	193	206	220	240	219	208	264	210	174	81	115	141	2488
CWS		81	71	59	56	97	71	59	80	69	36	25	29	23	756	
Total	298	264	265	276	337	290	267	344	279	210	106	144	164	3244		

Data in this report is preliminary and may differ from any final report. This report is produced to ensure continuous quality improvement throughout DCF.

Table 5: Monthly Count of CPS Reports and CWS Referrals Assigned to CP&P Local Offices

County	Local Office	Type of Referral													Total	
			June 2019	July 2019	Aug 2019	Sep 2019	Oct 2019	Nov 2019	Dec 2019	Jan 2020	Feb 2020	Mar 2020	Apr 2020	May 2020		Jun 2020
MIDDLESEX	Middlesex Central	CPS	85	83	77	103	129	103	103	139	109	94	64	62	68	1219
		CWS	23	25	24	26	30	27	25	36	31	23	10	6	10	296
		Total	108	108	101	129	159	130	128	175	140	117	74	68	78	1515
	Middlesex Coastal	CPS	113	88	115	136	146	115	146	160	135	131	54	69	95	1503
		CWS	37	26	32	37	49	43	35	41	32	35	14	12	15	408
		Total	150	114	147	173	195	158	181	201	167	166	68	81	110	1911
	Middlesex West	CPS	110	80	76	136	145	121	139	151	125	97	58	75	79	1392
		CWS	44	35	33	51	59	17	40	53	43	25	5	7	16	428
		Total	154	115	109	187	204	138	179	204	168	122	63	82	95	1820
	County Totals	CPS	308	251	268	375	420	339	388	450	369	322	176	206	242	4114
		CWS	104	86	89	114	138	87	100	130	106	83	29	25	41	1132
		Total	412	337	357	489	558	426	488	580	475	405	205	231	283	5246
MONMOUTH	Monmouth North	CPS	142	119	120	172	182	168	146	171	154	134	84	98	106	1796
		CWS	55	42	39	37	56	50	51	63	42	37	10	18	22	522
		Total	197	161	159	209	238	218	197	234	196	171	94	116	128	2318
	Monmouth South	CPS	136	110	101	127	152	101	123	124	138	110	58	71	89	1440
		CWS	43	24	27	42	47	31	29	53	47	20	14	9	16	402
		Total	179	134	128	169	199	132	152	177	185	130	72	80	105	1842
	County Totals	CPS	278	229	221	299	334	269	269	295	292	244	142	169	195	3236
		CWS	98	66	66	79	103	81	80	116	89	57	24	27	38	924
		Total	376	295	287	378	437	350	349	411	381	301	166	196	233	4160
MORRIS	Morris East	CPS	69	63	65	84	85	91	71	94	85	75	35	70	48	935
		CWS	16	21	16	33	36	33	25	36	42	19	8	15	16	316
		Total	85	84	81	117	121	124	96	130	127	94	43	85	64	1251
	Morris West	CPS	87	80	72	116	99	78	89	101	115	75	39	34	58	1043
		CWS	28	17	34	33	35	24	27	33	31	25	3	5	15	310
		Total	115	97	106	149	134	102	116	134	146	100	42	39	73	1353
	County Totals	CPS	156	143	137	200	184	169	160	195	200	150	74	104	106	1978
		CWS	44	38	50	66	71	57	52	69	73	44	11	20	31	626
		Total	200	181	187	266	255	226	212	264	273	194	85	124	137	2604
OCEAN	Ocean North	CPS	148	149	134	189	207	158	189	197	196	150	81	133	121	2052
		CWS	40	48	41	55	85	36	45	67	47	37	8	17	18	544
		Total	188	197	175	244	292	194	234	264	243	187	89	150	139	2596
	Ocean South	CPS	157	152	121	146	174	152	134	173	168	131	73	95	113	1789
		CWS	41	36	41	38	59	41	38	45	35	37	15	12	12	450
		Total	198	188	162	184	233	193	172	218	203	168	88	107	125	2239
	County Totals	CPS	305	301	255	335	381	310	323	370	364	281	154	228	234	3841
		CWS	81	84	82	93	144	77	83	112	82	74	23	29	30	994
		Total	386	385	337	428	525	387	406	482	446	355	177	257	264	4835
PASSAIC	Passaic Central	CPS	157	132	119	183	205	153	140	172	180	154	55	87	102	1839
		CWS	55	35	36	65	73	50	64	66	63	44	17	24	25	617
		Total	212	167	155	248	278	203	204	238	243	198	72	111	127	2456
	Passaic North	CPS	160	139	121	154	182	141	151	149	160	124	60	84	70	1695
		CWS	59	50	51	41	59	46	54	69	57	31	11	18	22	568
		Total	219	189	172	195	241	187	205	218	217	155	71	102	92	2263
	County Totals	CPS	317	271	240	337	387	294	291	321	340	278	115	171	172	3534
		CWS	114	85	87	106	132	96	118	135	120	75	28	42	47	1185
		Total	431	356	327	443	519	390	409	456	460	353	143	213	219	4719
SALEM	Salem	CPS	40	63	62	74	82	71	51	58	58	64	31	37	40	731
		CWS	17	20	23	18	16	7	18	21	24	11	4	7	13	199
		Total	57	83	85	92	98	78	69	79	82	75	35	44	53	930
	County Totals	CPS	40	63	62	74	82	71	51	58	58	64	31	37	40	731
		CWS	17	20	23	18	16	7	18	21	24	11	4	7	13	199
SOMERSET	Somerset	CPS	121	117	84	140	158	124	115	150	151	103	57	78	69	1467
		CWS	34	38	30	40	44	31	31	47	38	23	9	14	13	392
		Total	155	155	114	180	202	155	146	197	189	126	66	92	82	1859
	County Totals	CPS	121	117	84	140	158	124	115	150	151	103	57	78	69	1467
		CWS	34	38	30	40	44	31	31	47	38	23	9	14	13	392
Total	155	155	114	180	202	155	146	197	189	126	66	92	82	1859		

Table 5: Monthly Count of CPS Reports and CWS Referrals Assigned to CP&P Local Offices

County	Local Office	Type of Referral														Total
			June 2019	July 2019	Aug 2019	Sep 2019	Oct 2019	Nov 2019	Dec 2019	Jan 2020	Feb 2020	Mar 2020	Apr 2020	May 2020	Jun 2020	
SUSSEX	Sussex	CPS	77	64	84	104	97	71	74	85	93	55	41	38	45	928
		CWS	27	19	23	21	32	20	30	29	23	18	6	10	6	264
		Total	104	83	107	125	129	91	104	114	116	73	47	48	51	1192
	County Totals	CPS	77	64	84	104	97	71	74	85	93	55	41	38	45	928
		CWS	27	19	23	21	32	20	30	29	23	18	6	10	6	264
Total		104	83	107	125	129	91	104	114	116	73	47	48	51	1192	
UNION	Union Central	CPS	95	70	75	82	91	81	75	98	87	73	37	44	41	949
		CWS	25	19	17	26	31	32	32	29	31	16	8	6	10	282
		Total	120	89	92	108	122	113	107	127	118	89	45	50	51	1231
	Union East	CPS	80	76	63	68	89	81	86	92	97	54	35	44	50	915
		CWS	25	21	22	29	40	29	19	36	40	19	5	4	15	304
		Total	105	97	85	97	129	110	105	128	137	73	40	48	65	1219
	Union West	CPS	71	68	55	94	112	99	78	94	88	64	46	44	52	965
		CWS	21	22	20	22	37	23	37	34	40	20	6	5	22	309
		Total	92	90	75	116	149	122	115	128	128	84	52	49	74	1274
	County Totals	CPS	246	214	193	244	292	261	239	284	272	191	118	132	143	2829
CWS		71	62	59	77	108	84	88	99	111	55	19	15	47	895	
Total		317	276	252	321	400	345	327	383	383	246	137	147	190	3724	
WARREN	Warren	CPS	76	62	69	79	72	78	69	67	77	55	46	43	40	833
		CWS	26	20	19	18	24	15	13	31	24	10	8	7	16	231
		Total	102	82	88	97	96	93	82	98	101	65	54	50	56	1064
	County Totals	CPS	76	62	69	79	72	78	69	67	77	55	46	43	40	833
		CWS	26	20	19	18	24	15	13	31	24	10	8	7	16	231
Total		102	82	88	97	96	93	82	98	101	65	54	50	56	1064	
County CPS Referral Total		CPS	4,550	3,989	3,825	4,969	5,558	4,725	4,598	5,388	5,077	3,958	2,082	2,797	2,948	54,464
County CWS Referral Total		CWS	1,455	1,245	1,234	1,498	1,864	1,383	1,387	1,778	1,576	1,036	402	531	630	16,019
County Referral Total		Total	6,005	5,234	5,059	6,467	7,422	6,108	5,985	7,166	6,653	4,994	2,484	3,328	3,578	70,483
Central Region IAIU	CPS	57	58	41	60	70	49	48	67	63	34	10	6	23	586	
	CWS	0	0	0	0	0	0	0	0	0	0	0	0	0	0	
	Total	57	58	41	60	70	49	48	67	63	34	10	6	23	586	
Metro Region IAIU	CPS	41	36	42	43	80	45	41	46	69	33	3	11	2	492	
	CWS	0	0	0	0	0	0	0	0	0	0	0	0	0	0	
	Total	41	36	42	43	80	45	41	46	69	33	3	11	2	492	
Northern Region IAIU	CPS	64	53	37	68	77	45	45	59	42	44	6	12	10	562	
	CWS	0	0	0	0	0	0	0	0	0	0	0	0	0	0	
	Total	64	53	37	68	77	45	45	59	42	44	6	12	10	562	
Southern Region IAIU	CPS	69	66	57	83	75	59	62	82	61	51	12	18	20	715	
	CWS	0	0	0	0	0	0	0	0	0	0	0	0	0	0	
	Total	69	66	57	83	75	59	62	82	61	51	12	18	20	715	
IAIU CPS Subtotal		CPS	231	213	177	254	302	198	196	254	235	162	31	47	55	2,355
IAIU CWS Subtotal		CWS	0	0	0	0	0	0	0	0	0	0	0	0	0	
IAIU Subtotal		Total	231	213	177	254	302	198	196	254	235	162	31	47	55	2,355
County and IAIU CPS Subtotal		CPS	4,781	4,202	4,002	5,223	5,860	4,923	4,794	5,642	5,312	4,120	2,113	2,844	3,003	56,819
County and IAIU CWS Subtotal		CWS	1,455	1,245	1,234	1,498	1,864	1,383	1,387	1,778	1,576	1,036	402	531	630	16,019
Unable to Determine(1)		Total	147	138	138	145	170	117	108	135	113	79	39	59	48	1,436
Other Offices		Total	0	1	0	0	0	0	0	2	3	2	2	0	10	
Grand Total		Total	6,383	5,586	5,374	6,866	7,894	6,423	6,289	7,557	7,004	5,237	2,556	3,434	3,681	74,284

(1) CPS Reports or CWS Referrals not assigned to an office through the Assignment Designee, but were assigned to an office for an assessment or investigation.