



Child Protection and Permanency

Monthly Screening and Investigation Report June 2022

Christine Norbut Beyer, MSW
Commissioner



Table of Contents

Table 1: NJ State Central Registry Activity: Monthly Child Abuse and Neglect Hotline Calls, Intakes and Assignments to Child Protection & Permanency (CP&P) Offices

Chart 1: CP&P Annual Trends in Child Protection Services (CPS) Reports and Child Welfare Services (CWS) Referrals

Table 2: Assignments to CP&P Offices: CPS Reports and CWS Referrals

Table 3: Source of CPS Reports and CWS Referrals

Table 4: Monthly Count of CPS Reports and CWS Referrals Assigned to Counties

Table 5: Monthly Count of CPS Reports and CWS Referrals Assigned to CP&P Local Offices

Table 1: NJ State Central Registry Activity: Monthly Child Abuse and Neglect Hotline Calls, Intakes and Assignments to CP&P Offices^{1,2,7}

2021-2022	Hotline Call Activity				Intakes Recorded in NJ SPIRIT ^{6,8}														Assignments to CP&P Offices				
	Total Calls to SCR ³	Abandon Calls ⁴	Average Time to Answer (seconds)	Resulting NJS Intakes ⁵	CPS Reports		CWS Referrals		No Action Required (NAR)		Related Information (RI)		Information & Referral (I&R)		Information Only (IO)		Unusual Incident (UIRS)		CPS Reports		CWS Referrals		Total
					n	%	n	%	n	%	n	%	n	%	n	%	n	%	n	%	n	%	
June 2021	11,893	895	117	12,269	4,412	36.0%	591	4.8%	188	1.5%	2,943	24.0%	2,430	19.8%	1,705	13.9%	0	0.0%	4,412	88.2%	592	11.8%	5,004
July 2021	10,578	638	127	10,996	3,914	35.6%	569	5.2%	142	1.3%	2,642	24.0%	2,079	18.9%	1,650	15.0%	0	0.0%	3,914	87.3%	570	12.7%	4,484
August 2021	10,365	508	78	10,897	3,866	35.5%	482	4.4%	172	1.6%	2,371	21.8%	2,301	21.1%	1,704	15.6%	1	0.0%	3,866	88.9%	482	11.1%	4,348
September 2021	12,259	591	91	12,780	4,559	35.7%	564	4.4%	148	1.2%	2,794	21.9%	2,894	22.6%	1,819	14.2%	2	0.0%	4,559	89.0%	564	11.0%	5,123
October 2021	14,262	1,183	152	14,500	5,213	36.0%	631	4.4%	200	1.4%	3,287	22.7%	3,277	22.6%	1,890	13.0%	2	0.0%	5,213	89.2%	630	10.8%	5,843
November 2021	13,077	1,619	262	12,689	4,689	37.0%	539	4.2%	165	1.3%	2,817	22.2%	2,865	22.6%	1,609	12.7%	5	0.0%	4,689	89.7%	541	10.3%	5,230
December 2021	12,921	1,426	222	12,594	4,601	36.5%	558	4.4%	157	1.2%	2,746	21.8%	2,858	22.7%	1,660	13.2%	14	0.1%	4,601	89.2%	557	10.8%	5,158
January 2022	11,733	942	163	11,798	4,274	36.2%	524	4.4%	116	1.0%	2,561	21.7%	2,641	22.4%	1,672	14.2%	10	0.1%	4,274	89.1%	523	10.9%	4,797
February 2022	13,523	1,838	304	12,923	4,867	37.7%	632	4.9%	168	1.3%	2,732	21.1%	2,990	23.1%	1,524	11.8%	10	0.1%	4,867	88.5%	635	11.5%	5,502
March 2022	15,347	1,916	281	14,886	5,781	38.8%	727	4.9%	207	1.4%	2,946	19.8%	3,468	23.3%	1,750	11.8%	7	0.0%	5,780	88.8%	727	11.2%	6,507
April 2022	13,145	2,124	398	12,290	4,669	38.0%	637	5.2%	168	1.4%	2,486	20.2%	2,786	22.7%	1,537	12.5%	7	0.1%	4,669	88.0%	636	12.0%	5,305
May 2022	13,609	1,526	201	13,433	5,228	38.9%	644	4.8%	177	1.3%	2,804	20.9%	2,967	22.1%	1,604	11.9%	9	0.1%	5,228	89.0%	647	11.0%	5,875
June 2022	13,105	1,997	325	12,478	4,854	38.9%	597	4.8%	196	1.6%	2,678	21.5%	2,580	20.7%	1,569	12.6%	4	0.0%	4,854	89.0%	598	11.0%	5,452
	12,755	1,323	209	12,656	4,687	37.0%	592	4.7%	170	1.3%	2,754	21.8%	2,780	22.0%	1,669	13.2%	5	0.0%	4,687	88.8%	592	11.2%	5,279
Overall Total	165,817	17,203		164,533	60,927		7,695		2,204		35,807		36,136		21,693		71		60,926	88.8%	7,702	11.2%	68,628

¹ Comes from three distinct sources: (1) the Automatic Call Distribution (ACD) phone system; which keeps a count of the number of calls and call routing; (2) Monthly NJSpirit Intakes; which record decision making on calls received by hotline screeners, and (3) NJSpirit

² The number of Intakes, CPS Reports, and CWS Referrals are based on an extract from NJSpirit.

Data extracted by the Office of Research, Evaluation, and Reporting on **July 08, 2022** includes all Intakes, CPS Reports, and CWS Referrals received from **June 01, 2022** through **June 30, 2022**.

³ The number calls received through the ACD System that were directed to a screener from any call-in phone number.

⁴ The number of calls received through the ACD System that are abandoned either while waiting in queue or while ringing.

⁵ The number of Intakes entered in NJSpirit from the number of calls received.

⁶ The number of Intakes recorded in NJSpirit, by type of Intake. There is not a one-to-one relationship between an ACD call and an Intake; multiple calls to State Central Registry (SCR) may result in a single Intake, or one call may result in multiple Intakes.

⁷ Intake: The process of documenting: a report of alleged abuse or neglect of a child (CPS); a request for services on behalf of a child, or a referral of a child for services (CWS); a call in which the caller provides additional or clarifying information about a current service

CP&P Annual Trends in CPS Reports and CWS Referrals

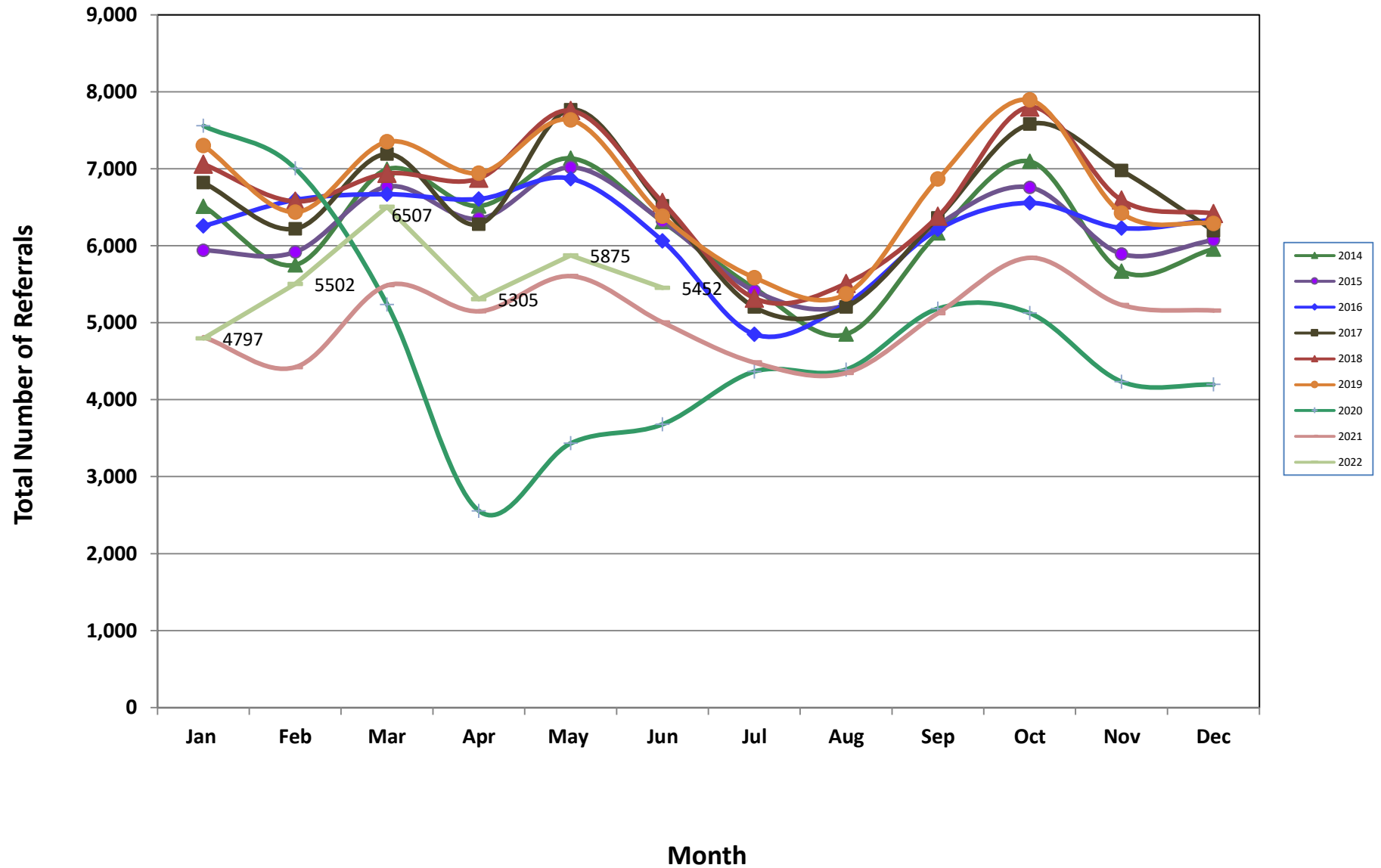


Table 2: Assignments to CP&P Offices: CPS Reports and CWS Referrals¹

Intake Date ³		CPS Reports ²	CWS Referrals ²	Total Assignments ²
2017	Jan 2017	5,111	1,708	6,819
	Feb 2017	4,716	1,504	6,220
	Mar 2017	5,349	1,843	7,192
	Apr 2017	4,790	1,490	6,280
	May 2017	5,847	1,919	7,766
	Jun 2017	4,853	1,665	6,518
	Jul 2017	3,814	1,389	5,203
	Aug 2017	3,866	1,340	5,206
	Sep 2017	4,719	1,643	6,362
	Oct 2017	5,613	1,966	7,579
	Nov 2017	5,223	1,753	6,976
	Dec 2017	4,601	1,594	6,195
	Total	58,502	19,814	78,316
2018	Jan 2018	5,276	1,784	7,060
	Feb 2018	4,933	1,644	6,577
	Mar 2018	5,212	1,727	6,939
	Apr 2018	5,275	1,601	6,876
	May 2018	5,920	1,836	7,756
	Jun 2018	4,948	1,615	6,563
	Jul 2018	4,011	1,308	5,319
	Aug 2018	4,102	1,408	5,510
	Sep 2018	4,748	1,634	6,382
	Oct 2018	5,790	2,011	7,801
	Nov 2018	4,973	1,620	6,593
	Dec 2018	4,891	1,527	6,418
	Total	60,079	19,715	79,794
2019	Jan 2019	5,443	1,858	7,301
	Feb 2019	4,811	1,628	6,439
	Mar 2019	5,677	1,824	7,501
	Apr 2019	5,313	1,630	6,943
	May 2019	5,853	1,781	7,634
	Jun 2019	4,874	1,509	6,383
	Jul 2019	4,277	1,309	5,586
	Aug 2019	4,068	1,306	5,374
	Sep 2019	5,315	1,551	6,866
	Oct 2019	5,968	1,926	7,894
	Nov 2019	4,991	1,432	6,423
	Dec 2019	4,855	1,434	6,289
	Total	61,445	19,188	80,633

Table 2: Assignments to CP&P Offices: CPS Reports and CWS Referrals¹

Intake Date ³		CPS Reports ²	CWS Referrals ²	Total Assignments ²
2020	Jan 2020	5,715	1,842	7,557
	Feb 2020	5,380	1,624	7,004
	Mar 2020	4,172	1,065	5,237
	Apr 2020	2,149	407	2,556
	May 2020	2,897	537	3,434
	Jun 2020	3,045	636	3,681
	Jul 2020	3,628	738	4,366
	Aug 2020	3,569	822	4,391
	Sep 2020	4,153	1,030	5,183
	Oct 2020	4,257	868	5,125
	Nov 2020	3,564	670	4,234
	Dec 2020	3,517	681	4,198
	Total	46,046	10,920	56,966
2021	Jan 2021	4,018	794	4,812
	Feb 2021	3,767	655	4,422
	Mar 2021	4,657	830	5,487
	Apr 2021	4,398	750	5,148
	May 2021	4,870	736	5,606
	Jun 2021	4,412	592	5,004
	Jul 2021	3,914	570	4,484
	Aug 2021	3,866	482	4,348
	Sep 2021	4,559	564	5,123
	Oct 2021	5,213	630	5,843
	Nov 2021	4,689	541	5,230
	Dec 2021	4,601	557	5,158
	Total	52,964	7,701	60,665
2022	Jan 2022	4,274	523	4,797
	Feb 2022	4,867	635	5,502
	Mar 2022	5,780	727	6,507
	Apr 2022	4,669	636	5,305
	May 2022	5,228	647	5,875
	Jun 2022	4,854	598	5,452
	Total	25,398	3,243	28,641
Grand Total		304,434	80,581	385,015

¹Source of Data: NJ SPIRIT

²A CPS Report or a CWS Referral may include multiple children in a family, with one or more allegation or request for services. In these cases, each CPS Report or CWS Referral is counted once - the CPS Report or the CWS Referral is the unit of analysis rather than the child.

³Prior to January 2014, the number of CPS Reports and CWS Referrals was based on the type of assignment of the CPS Report or CWS Referral. Beginning in January 2014, the number of CPS Reports and CWS Referrals is based on the number of CPS Reports and CWS Referrals received.

Table 3: Source of CPS Reports and CWS Referrals

	Source	Jun 2021	Jul 2021	Aug 2021	Sep 2021	Oct 2021	Nov 2021	Dec 2021	Jan 2022	Feb 2022	Mar 2022	Apr 2022	May 2022	Jun 2022		13 Month Total	
CPS Reports and CWS Referrals	School Staff	531	145	83	863	1,450	1,303	1,252	983	1,549	1,998	1,227	1,456	929	17%	13,769	20%
	Healthcare Provider	819	839	789	824	780	746	706	746	750	895	728	763	786	14%	10,171	15%
	Law Enforcement	1,466	1,442	1,384	1,397	1,446	1,340	1,341	1,238	1,234	1,478	1,373	1,513	1,549	28%	18,201	27%
	Government Agency	221	248	265	266	222	205	209	212	253	261	261	233	262	5%	3,118	5%
	Parent	396	392	404	347	393	377	378	347	349	380	333	383	399	7%	4,878	7%
	Relative/Friend/Neighbor	382	362	363	372	350	289	342	337	275	298	301	344	318	6%	4,333	6%
	Anonymous	476	387	401	444	506	364	367	366	461	471	410	527	493	9%	5,673	8%
	CP&P	76	58	45	60	73	45	49	54	56	75	62	42	53	1%	748	1%
	Court/Legal	119	125	88	120	126	89	89	100	108	144	140	116	136	2%	1,500	2%
	Community Group/Individual	176	149	159	137	175	169	144	158	183	198	176	201	205	4%	2,230	3%
	Facility Staff (incl Correctional Facility)	66	65	69	51	55	47	53	54	56	55	59	62	59	1%	751	1%
	Child (Self)	22	26	49	41	42	28	30	29	29	25	25	18	28	1%	392	1%
	Other	245	226	236	189	214	217	182	160	183	209	188	194	222	4%	2,665	4%
	Daycare/Babysitter	9	20	13	12	11	11	16	13	16	20	22	23	13	0%	199	0%
Total		5,004	4,484	4,348	5,123	5,843	5,230	5,158	4,797	5,502	6,507	5,305	5,875	5,452		68,628	

Table 4: Monthly Count of CPS Reports and CWS Referrals Assigned to Counties

County														Average Number of Assignments Last 13 Months	May 22 to Jun 22 Numerical Difference
	Jun 2021	Jul 2021	Aug 2021	Sep 2021	Oct 2021	Nov 2021	Dec 2021	Jan 2022	Feb 2022	Mar 2022	Apr 2022	May 2022	Jun 2022		
Atlantic	241	197	182	215	255	234	215	189	245	268	222	250	233	227	-17
Bergen	273	255	249	325	350	345	360	290	354	425	348	327	349	327	22
Burlington	286	238	223	263	280	264	270	264	283	359	255	300	292	275	-8
Camden	403	381	371	466	511	407	419	404	449	542	458	474	422	439	-52
Cape May	56	81	72	70	70	66	70	62	59	74	62	68	69	68	1
Cumberland	165	153	140	180	196	167	190	149	160	202	166	206	182	174	-24
Essex	501	457	442	484	565	535	489	456	550	647	532	581	517	520	-64
Gloucester	228	205	207	208	221	215	204	216	195	257	217	218	206	215	-12
Hudson	319	255	287	303	371	349	321	341	392	415	324	409	327	339	-82
Hunterdon	34	37	33	39	52	44	44	40	33	55	46	38	56	42	18
Mercer	230	200	185	222	245	218	230	189	229	263	217	258	229	224	-29
Middlesex	349	299	317	385	472	355	408	356	464	520	388	432	404	396	-28
Monmouth	262	249	256	250	331	294	294	260	288	342	297	332	286	288	-46
Morris	190	141	137	173	185	189	176	193	193	213	180	216	205	184	-11
Ocean	360	290	310	337	382	341	333	304	305	370	332	372	375	339	3
Passaic	291	285	245	313	402	350	330	274	354	415	347	385	350	334	-35
Salem	64	61	48	75	78	56	57	65	74	84	55	81	53	65	-28
Somerset	130	108	97	131	148	130	111	112	141	165	107	142	132	127	-10
Sussex	70	62	67	90	99	85	72	84	100	107	95	95	95	86	0
Union	266	240	226	256	293	277	277	257	290	363	317	332	310	285	-22
Warren	86	87	55	99	68	93	67	86	83	121	79	86	85	84	-1
County Subtotals	4,804	4,281	4,149	4,884	5,574	5,014	4,937	4,591	5,241	6,207	5,044	5,602	5,177	5,039	-425
Central Region IAIU	22	35	25	42	53	31	37	32	43	54	35	60	32	39	-28
Metro Region IAIU	17	11	22	36	29	26	21	27	36	35	35	41	41	29	0
Northern Region IAIU	18	23	19	27	39	44	42	28	40	50	38	52	40	35	-12
Southern Region IAIU	33	42	42	51	41	33	42	35	46	59	46	48	56	44	8
IAIU Subtotals	90	111	108	156	162	134	142	122	165	198	154	201	169	147	-32
¹ Unable to Determine	108	89	91	83	107	82	78	84	92	102	107	72	103	92	31
Other Offices	2	3	0	0	0	0	1	0	4	0	0	0	3	1	3
Grand Total	5,004	4,484	4,348	5,123	5,843	5,230	5,158	4,797	5,502	6,507	5,305	5,875	5,452	5,279	-423

¹CPS Reports or CWS Referrals not assigned to an office through the Assignment Designee, but were assigned to an office for an assessment or investigation.



Table 5: Monthly Count of CPS Reports and CWS Referrals Assigned to CP&P Local Offices

County	Local Office	Type of Referral	Jun 2021	Jul 2021	Aug 2021	Sep 2021	Oct 2021	Nov 2021	Dec 2021	Jan 2022	Feb 2022	Mar 2022	Apr 2022	May 2022	Jun 2022	Total
ATLANTIC	Atlantic East	CPS	130	95	97	106	126	118	104	114	124	128	106	116	117	1,481
		CWS	14	12	17	10	13	12	14	9	13	21	26	15	19	195
		Total	144	107	114	116	139	130	118	123	137	149	132	131	136	1,676
	Atlantic West	CPS	83	83	60	82	104	90	85	58	90	103	81	107	85	1,111
		CWS	14	7	8	17	12	14	12	8	18	16	9	12	12	159
		Total	97	90	68	99	116	104	97	66	108	119	90	119	97	1,270
	County Totals	CPS	213	178	157	188	230	208	189	172	214	231	187	223	202	2,592
		CWS	28	19	25	27	25	26	26	17	31	37	35	27	31	354
		Total	241	197	182	215	255	234	215	189	245	268	222	250	233	2,946
BERGEN	Bergen Central	CPS	89	85	85	132	139	133	127	111	152	169	119	119	142	1,602
		CWS	15	10	6	13	19	18	11	13	17	17	18	13	7	177
		Total	104	95	91	145	158	151	138	124	169	186	137	132	149	1,779
	Bergen South	CPS	157	139	147	157	177	174	197	148	170	217	188	179	176	2,226
		CWS	12	21	11	23	15	20	25	18	15	22	23	16	24	245
		Total	169	160	158	180	192	194	222	166	185	239	211	195	200	2,471
	County Totals	CPS	246	224	232	289	316	307	324	259	322	386	307	298	318	3,828
		CWS	27	31	17	36	34	38	36	31	32	39	41	29	31	422
		Total	273	255	249	325	350	345	360	290	354	425	348	327	349	4,250
BURLINGTON	Burlington East	CPS	129	91	91	103	137	115	111	119	121	162	103	134	133	1,549
		CWS	21	20	10	17	11	18	16	16	11	17	17	15	21	210
		Total	150	111	101	120	148	133	127	135	132	179	120	149	154	1,759
	Burlington West	CPS	117	105	100	125	115	115	128	119	127	156	118	129	123	1,577
		CWS	19	22	22	18	17	16	15	10	24	24	17	22	15	241
		Total	136	127	122	143	132	131	143	129	151	180	135	151	138	1,818
	County Totals	CPS	246	196	191	228	252	230	239	238	248	318	221	263	256	3,126
		CWS	40	42	32	35	28	34	31	26	35	41	34	37	36	451
		Total	286	238	223	263	280	264	270	264	283	359	255	300	292	3,577
CAMDEN	Camden Central	CPS	88	86	88	105	117	93	91	91	104	111	95	112	99	1,280
		CWS	13	12	16	15	17	15	14	16	16	7	9	17	21	188
		Total	101	98	104	120	134	108	105	107	120	118	104	129	120	1,468
	Camden East	CPS	84	81	84	101	128	94	81	84	95	106	107	94	98	1,237
		CWS	13	13	16	10	16	14	20	22	11	20	15	16	20	206
		Total	97	94	100	111	144	108	101	106	106	126	122	110	118	1,443
	Camden North	CPS	92	79	67	97	102	91	87	89	103	135	98	85	71	1,196
		CWS	11	9	13	17	15	5	14	9	16	22	22	21	12	186
		Total	103	88	80	114	117	96	101	98	119	157	120	106	83	1,382
	Camden South	CPS	92	88	75	108	96	85	94	83	95	117	101	122	88	1,244
		CWS	10	13	12	13	20	10	18	10	9	24	11	7	13	170
		Total	102	101	87	121	116	95	112	93	104	141	112	129	101	1,414
County Totals	CPS	356	334	314	411	443	363	353	347	397	469	401	413	356	4,957	
	CWS	47	47	57	55	68	44	66	57	52	73	57	61	66	750	
	Total	403	381	371	466	511	407	419	404	449	542	458	474	422	5,707	
CAPE MAY	Cape May	CPS	51	63	64	61	61	56	61	56	52	63	56	58	61	763
		CWS	5	18	8	9	9	10	9	6	7	11	6	10	8	116
		Total	56	81	72	70	70	66	70	62	59	74	62	68	69	879
	County Totals	CPS	51	63	64	61	61	56	61	56	52	63	56	58	61	763
		CWS	5	18	8	9	9	10	9	6	7	11	6	10	8	116
Total	56	81	72	70	70	66	70	62	59	74	62	68	69	879		
CUMBERLAND	Cumberland East	CPS	66	68	58	77	75	59	71	56	54	74	59	65	65	847
		CWS	11	4	4	8	11	6	8	11	14	10	4	12	11	114
		Total	77	72	62	85	86	65	79	67	68	84	63	77	76	961
	Cumberland West	CPS	74	73	71	89	102	94	96	67	81	109	90	115	94	1,155
		CWS	14	8	7	6	8	8	15	15	11	9	13	14	12	140
		Total	88	81	78	95	110	102	111	82	92	118	103	129	106	1,295
	County Totals	CPS	140	141	129	166	177	153	167	123	135	183	149	180	159	2,002
CWS		25	12	11	14	19	14	23	26	25	19	17	26	23	254	
Total		165	153	140	180	196	167	190	149	160	202	166	206	182	2,256	

Data in this report is preliminary and may differ from any final report. This report is produced to ensure continuous quality improvement throughout DCF.



Table 5: Monthly Count of CPS Reports and CWS Referrals Assigned to CP&P Local Offices

County	Local Office	Type of Referral	Jun 2021	Jul 2021	Aug 2021	Sep 2021	Oct 2021	Nov 2021	Dec 2021	Jan 2022	Feb 2022	Mar 2022	Apr 2022	May 2022	Jun 2022	Total
ESSEX	Essex Central	CPS	63	77	59	75	88	78	68	57	69	78	89	83	77	961
		CWS	9	15	12	6	14	7	12	6	13	10	14	10	9	137
		Total	72	92	71	81	102	85	80	63	82	88	103	93	86	1,098
	Essex North	CPS	71	68	49	50	78	85	109	81	88	115	82	91	90	1,057
		CWS	7	7	1	3	9	12	8	13	10	6	7	11	6	100
		Total	78	75	50	53	87	97	117	94	98	121	89	102	96	1,157
	Essex South	CPS	86	61	74	76	104	84	62	65	89	123	82	106	86	1098
		CWS	13	9	9	13	14	11	15	8	11	15	10	17	9	154
		Total	99	70	83	89	118	95	77	73	100	138	92	123	95	1252
	Newark Center City	CPS	67	67	64	75	86	64	75	79	71	90	75	88	67	968
		CWS	14	3	11	12	6	11	13	2	8	9	9	9	10	117
		Total	81	70	75	87	92	75	88	81	79	99	84	97	77	1085
	Newark Northeast	CPS	70	61	61	71	75	80	50	68	91	94	83	72	63	939
		CWS	11	18	7	9	14	6	5	8	13	14	5	6	7	123
		Total	81	79	68	80	89	86	55	76	104	108	88	78	70	1062
	Newark South	CPS	86	58	81	83	72	85	65	55	79	88	65	76	80	973
		CWS	4	13	14	11	5	12	7	14	8	5	11	12	13	129
		Total	90	71	95	94	77	97	72	69	87	93	76	88	93	1102
	County Totals	CPS	443	392	388	430	503	476	429	405	487	588	476	516	463	5996
		CWS	58	65	54	54	62	59	60	51	63	59	56	65	54	760
		Total	501	457	442	484	565	535	489	456	550	647	532	581	517	6756
GLOUCESTER	Gloucester East	CPS	85	85	76	80	97	88	90	86	84	107	79	88	81	1126
		CWS	13	15	8	19	13	13	7	14	12	16	18	9	13	170
		Total	98	100	84	99	110	101	97	100	96	123	97	97	94	1296
	Gloucester West	CPS	109	90	113	97	93	95	92	103	91	123	103	109	98	1316
		CWS	21	15	10	12	18	19	15	13	8	11	17	12	14	185
		Total	130	105	123	109	111	114	107	116	99	134	120	121	112	1501
	County Totals	CPS	194	175	189	177	190	183	182	189	175	230	182	197	179	2442
CWS		34	30	18	31	31	32	22	27	20	27	35	21	27	355	
Total		228	205	207	208	221	215	204	216	195	257	217	218	206	2797	
HUDSON	Hudson Central	CPS	78	63	104	78	111	80	70	78	93	99	74	131	82	1141
		CWS	20	11	8	15	13	18	15	9	18	17	11	10	14	179
		Total	98	74	112	93	124	98	85	87	111	116	85	141	96	1320
	Hudson North	CPS	57	60	60	59	68	80	81	90	98	108	65	74	70	970
		CWS	7	11	12	11	9	6	8	5	12	10	10	10	6	117
		Total	64	71	72	70	77	86	89	95	110	118	75	84	76	1087
	Hudson South	CPS	74	37	41	51	54	68	59	62	69	74	63	80	74	806
		CWS	8	7	3	9	12	4	5	12	8	4	10	14	8	104
		Total	82	44	44	60	66	72	64	74	77	78	73	94	82	910
	Hudson West	CPS	65	61	52	72	93	87	77	76	87	90	84	84	66	994
		CWS	10	5	7	8	11	6	6	9	7	13	7	6	7	102
		Total	75	66	59	80	104	93	83	85	94	103	91	90	73	1096
	County Totals	CPS	274	221	257	260	326	315	287	306	347	371	286	369	292	3911
		CWS	45	34	30	43	45	34	34	35	45	44	38	40	35	502
Total		319	255	287	303	371	349	321	341	392	415	324	409	327	4413	
HUNTERDON	Hunterdon	CPS	29	35	32	35	49	42	42	36	30	50	39	34	50	503
		CWS	5	2	1	4	3	2	2	4	3	5	7	4	6	48
		Total	34	37	33	39	52	44	44	40	33	55	46	38	56	551
	County Totals	CPS	29	35	32	35	49	42	42	36	30	50	39	34	50	503
		CWS	5	2	1	4	3	2	2	4	3	5	7	4	6	48
Total	34	37	33	39	52	44	44	40	33	55	46	38	56	551		
MERCER	Mercer North	CPS	113	92	90	103	85	97	95	87	99	129	91	131	111	1323
		CWS	17	20	12	13	18	12	12	13	16	14	18	12	15	192
		Total	130	112	102	116	103	109	107	100	115	143	109	143	126	1515
	Mercer South	CPS	88	74	76	91	128	101	108	76	107	106	100	96	93	1244
		CWS	12	14	7	15	14	8	15	13	7	14	8	19	10	156
		Total	100	88	83	106	142	109	123	89	114	120	108	115	103	1400
	County Totals	CPS	201	166	166	194	213	198	203	163	206	235	191	227	204	2567
CWS		29	34	19	28	32	20	27	26	23	28	26	31	25	348	
Total		230	200	185	222	245	218	230	189	229	263	217	258	229	2915	

Data in this report is preliminary and may differ from any final report. This report is produced to ensure continuous quality improvement throughout DCF.



Table 5: Monthly Count of CPS Reports and CWS Referrals Assigned to CP&P Local Offices

County	Local Office	Type of Referral	Jun 2021	Jul 2021	Aug 2021	Sep 2021	Oct 2021	Nov 2021	Dec 2021	Jan 2022	Feb 2022	Mar 2022	Apr 2022	May 2022	Jun 2022	Total
MIDDLESEX	Middlesex Central	CPS	103	81	71	91	118	101	114	114	125	129	126	107	117	1397
		CWS	15	10	7	12	17	9	10	5	19	18	12	14	12	160
		Total	118	91	78	103	135	110	124	119	144	147	138	121	129	1557
	Middlesex Coastal	CPS	102	93	109	132	149	120	120	113	138	173	124	137	127	1637
		CWS	11	9	14	9	12	9	12	6	10	8	12	13	13	138
		Total	113	102	123	141	161	129	132	119	148	181	136	150	140	1775
	Middlesex West	CPS	104	95	106	127	162	106	146	109	153	171	100	147	121	1647
		CWS	14	11	10	14	14	10	6	9	19	21	14	14	14	170
		Total	118	106	116	141	176	116	152	118	172	192	114	161	135	1817
	County Totals	CPS	309	269	286	350	429	327	380	336	416	473	350	391	365	4681
		CWS	40	30	31	35	43	28	28	20	48	47	38	41	39	468
		Total	349	299	317	385	472	355	408	356	464	520	388	432	404	5149
MONMOUTH	Monmouth North	CPS	124	121	125	123	186	132	158	132	145	186	157	172	134	1895
		CWS	11	10	16	11	14	17	17	11	12	14	16	22	5	176
		Total	135	131	141	134	200	149	175	143	157	200	173	194	139	2071
	Monmouth South	CPS	116	107	109	109	120	134	108	100	114	130	110	126	136	1519
		CWS	11	11	6	7	11	11	11	17	17	12	14	12	11	151
		Total	127	118	115	116	131	145	119	117	131	142	124	138	147	1670
	County Totals	CPS	240	228	234	232	306	266	266	232	259	316	267	298	270	3414
		CWS	22	21	22	18	25	28	28	28	29	26	30	34	16	327
		Total	262	249	256	250	331	294	294	260	288	342	297	332	286	3741
MORRIS	Morris East	CPS	89	53	70	67	74	82	73	75	101	89	72	85	85	1015
		CWS	7	7	4	8	6	7	12	11	5	8	11	7	12	105
		Total	96	60	74	75	80	89	85	86	106	97	83	92	97	1120
	Morris West	CPS	86	76	57	89	95	90	84	99	78	101	82	112	99	1148
		CWS	8	5	6	9	10	10	7	8	9	15	15	12	9	123
		Total	94	81	63	98	105	100	91	107	87	116	97	124	108	1271
	County Totals	CPS	175	129	127	156	169	172	157	174	179	190	154	197	184	2163
		CWS	15	12	10	17	16	17	19	19	14	23	26	19	21	228
		Total	190	141	137	173	185	189	176	193	193	213	180	216	205	2391
OCEAN	Ocean North	CPS	173	142	148	162	178	172	159	154	151	158	171	172	172	2112
		CWS	20	18	17	11	15	13	14	18	22	24	16	23	18	229
		Total	193	160	165	173	193	185	173	172	173	182	187	195	190	2341
	Ocean South	CPS	148	110	136	149	170	144	145	123	116	168	128	153	173	1863
		CWS	19	20	9	15	19	12	15	9	16	20	17	24	12	207
		Total	167	130	145	164	189	156	160	132	132	188	145	177	185	2070
	County Totals	CPS	321	252	284	311	348	316	304	277	267	326	299	325	345	3975
		CWS	39	38	26	26	34	25	29	27	38	44	33	47	30	436
		Total	360	290	310	337	382	341	333	304	305	370	332	372	375	4411
PASSAIC	Passaic Central	CPS	115	132	90	143	169	160	155	144	165	187	140	177	164	1941
		CWS	12	9	11	20	22	18	14	15	29	24	25	18	14	231
		Total	127	141	101	163	191	178	169	159	194	211	165	195	178	2172
	Passaic North	CPS	153	126	130	135	193	157	152	104	136	182	154	166	157	1945
		CWS	11	18	14	15	18	15	9	11	24	22	28	24	15	224
		Total	164	144	144	150	211	172	161	115	160	204	182	190	172	2169
	County Totals	CPS	268	258	220	278	362	317	307	248	301	369	294	343	321	3886
		CWS	23	27	25	35	40	33	23	26	53	46	53	42	29	455
		Total	291	285	245	313	402	350	330	274	354	415	347	385	350	4341
SALEM	Salem	CPS	59	51	41	66	71	50	49	58	59	70	48	72	46	740
		CWS	5	10	7	9	7	6	8	7	15	14	7	9	7	111
		Total	64	61	48	75	78	56	57	65	74	84	55	81	53	851
	County Totals	CPS	59	51	41	66	71	50	49	58	59	70	48	72	46	740
		CWS	5	10	7	9	7	6	8	7	15	14	7	9	7	111
Total	64	61	48	75	78	56	57	65	74	84	55	81	53	851		
SOMERSET	Somerset	CPS	114	96	85	128	133	125	101	103	132	149	103	132	119	1520
		CWS	16	12	12	3	15	5	10	9	9	16	4	10	13	134
		Total	130	108	97	131	148	130	111	112	141	165	107	142	132	1654
	County Totals	CPS	114	96	85	128	133	125	101	103	132	149	103	132	119	1520
		CWS	16	12	12	3	15	5	10	9	9	16	4	10	13	134
Total	130	108	97	131	148	130	111	112	141	165	107	142	132	1654		

Data in this report is preliminary and may differ from any final report. This report is produced to ensure continuous quality improvement throughout DCF.

Table 5: Monthly Count of CPS Reports and CWS Referrals Assigned to CP&P Local Offices

County	Local Office	Type of Referral														Total	
			Jun 2021	Jul 2021	Aug 2021	Sep 2021	Oct 2021	Nov 2021	Dec 2021	Jan 2022	Feb 2022	Mar 2022	Apr 2022	May 2022	Jun 2022		
SUSSEX	Sussex	CPS	64	52	62	82	86	71	67	77	89	98	84	85	77	994	
		CWS	6	10	5	8	13	14	5	7	11	9	11	10	18	127	
		Total	70	62	67	90	99	85	72	84	100	107	95	95	95	1121	
	County Totals	CPS	64	52	62	82	86	71	67	77	89	98	84	85	77	994	
		CWS	6	10	5	8	13	14	5	7	11	9	11	10	18	127	
		Total	70	62	67	90	99	85	72	84	100	107	95	95	95	1121	
UNION	Union Central	CPS	70	74	65	72	87	64	82	56	78	95	90	88	97	1018	
		CWS	5	10	9	8	3	11	5	10	8	16	4	15	10	114	
		Total	75	84	74	80	90	75	87	66	86	111	94	103	107	1132	
	Union East	CPS	95	72	68	66	93	88	87	108	75	104	98	96	88	1138	
		CWS	9	2	8	11	9	9	15	8	9	14	10	13	19	136	
		Total	104	74	76	77	102	97	102	116	84	118	108	109	107	1274	
	Union West	CPS	79	70	70	89	93	95	79	67	108	115	98	105	89	1157	
		CWS	8	12	6	10	8	10	9	8	12	19	17	15	7	141	
		Total	87	82	76	99	101	105	88	75	120	134	115	120	96	1298	
	County Totals	CPS	244	216	203	227	273	247	248	231	261	314	286	289	274	3313	
		CWS	22	24	23	29	20	30	29	26	29	49	31	43	36	391	
		Total	266	240	226	256	293	277	277	257	290	363	317	332	310	3704	
	WARREN	Warren	CPS	77	78	51	91	64	86	62	77	77	103	71	77	78	992
			CWS	9	9	4	8	4	7	5	9	6	18	8	9	7	103
			Total	86	87	55	99	68	93	67	86	83	121	79	86	85	1095
County Totals		CPS	77	78	51	91	64	86	62	77	77	103	71	77	78	992	
		CWS	9	9	4	8	4	7	5	9	6	18	8	9	7	103	
		Total	86	87	55	99	68	93	67	86	83	121	79	86	85	1095	
County CPS Referral Total		CPS	4,264	3,754	3,712	4,360	5,001	4,508	4,417	4,107	4,653	5,532	4,451	4,987	4,619	58,365	
County CWS Referral Total		CWS	540	527	437	524	573	506	520	484	588	675	593	615	558	7,140	
County Referral Total		Total	4,804	4,281	4,149	4,884	5,574	5,014	4,937	4,591	5,241	6,207	5,044	5,602	5,177	65,505	
Central Region IAIU		CPS	22	35	25	42	53	31	37	32	43	54	35	60	32	501	
		CWS	0	0	0	0	0	0	0	0	0	0	0	0	0	0	0
		Total	22	35	25	42	53	31	37	32	43	54	35	60	32	501	
Metro Region IAIU		CPS	17	11	22	36	28	26	21	27	36	35	35	41	41	376	
		CWS	0	0	0	0	1	0	0	0	0	0	0	0	0	1	1
		Total	17	11	22	36	29	26	21	27	36	35	35	41	41	377	
Northern Region IAIU		CPS	18	23	19	27	39	44	41	28	40	50	38	52	40	459	
		CWS	0	0	0	0	0	0	1	0	0	0	0	0	0	1	1
		Total	18	23	19	27	39	44	42	28	40	50	38	52	40	460	
Southern Region IAIU		CPS	33	42	42	51	41	33	42	35	46	59	46	48	56	574	
		CWS	0	0	0	0	0	0	0	0	0	0	0	0	0	0	0
		Total	33	42	42	51	41	33	42	35	46	59	46	48	56	574	
IAIU CPS Subtotal		CPS	90	111	108	156	161	134	141	122	165	198	154	201	169	1,910	
IAIU CWS Subtotal		CWS	0	0	0	0	1	0	1	0	0	0	0	0	0	2	
IAIU Subtotal		Total	90	111	108	156	162	134	142	122	165	198	154	201	169	1,912	
County and IAIU CPS Subtotal		CPS	4,354	3,865	3,820	4,516	5,162	4,642	4,558	4,229	4,818	5,730	4,605	5,188	4,788	60,275	
County and IAIU CWS Subtotal		CWS	540	527	437	524	574	506	521	484	588	675	593	615	558	7,142	
Unable to Determine(1)		Total	108	89	91	83	107	82	78	84	92	102	107	72	103	1,198	
Other Offices		Total	2	3	0	0	0	0	1	0	4	0	0	0	3	13	
Grand Total		Total	5,004	4,484	4,348	5,123	5,843	5,230	5,158	4,797	5,502	6,507	5,305	5,875	5,452	68,628	

(1) CPS Reports or CWS Referrals not assigned to an office through the Assignment Designee, but were assigned to an office for an assessment or investigation.