



## **Child Protection and Permanency**

# **Monthly Screening and Investigation Report July 2016**

Allison Blake, Ph.D., L.S.W.  
Commissioner

August 26, 2016



## Table of Contents

Table 1: NJ State Central Registry Activity: Monthly Child Abuse and Neglect Hotline Calls, Intakes and Assignments to Child Protection & Permanency (CP&P) Offices

---

Chart 1: CP&P Annual Trends in Child Protection Services (CPS) Reports and Child Welfare Services (CWS) Referrals

---

Table 2: Assignments to CP&P Offices: CPS Reports and CWS Referrals

---

Table 3: Source of CPS Reports and CWS Referrals

---

Table 4: Monthly Count of CPS Reports and CWS Referrals Assigned to Counties

---

Table 5: Monthly Count of CPS Reports and CWS Referrals Assigned to CP&P Local Offices

---

**Table 1: NJ State Central Registry Activity: Monthly Child Abuse and Neglect Hotline Calls, Intakes and Assignments to CP&P Offices<sup>1,2,7</sup>**

2015 - 2016	Hotline Call Activity				Intakes Recorded in NJ SPIRIT <sup>6,8</sup>												Assignments to CP&P Offices				
	Total Calls to SCR <sup>3</sup>	Abandon Calls <sup>4</sup>	Average Time to Answer (seconds)	Resulting NJS Intakes <sup>5</sup>	CPS Reports		CWS Referrals		No Action Required (NAR)		Related Information (RI)		Information & Referral (I&R)		Information Only (IO)		CPS Reports		CWS Referrals		Total
					n	%	n	%	n	%	n	%	n	%	n	%	n	%	n	%	
July 2015	12,132	380	20	13,624	4,140	30.4%	1,273	9.3%	442	3.2%	3,569	26.2%	1,416	10.4%	2,784	20.4%	4,140	76.5%	1,273	23.5%	5,413
August 2015	12,553	652	24	13,691	3,978	29.1%	1,257	9.2%	401	2.9%	3,713	27.1%	1,384	10.1%	2,958	21.6%	3,978	76.0%	1,256	24.0%	5,234
September 2015	13,335	351	24	14,955	4,776	31.9%	1,494	10.0%	467	3.1%	3,908	26.1%	1,601	10.7%	2,709	18.1%	4,776	76.2%	1,495	23.8%	6,271
October 2015	14,304	315	18	15,821	5,139	32.5%	1,620	10.2%	332	2.1%	4,073	25.7%	1,834	11.6%	2,823	17.8%	5,139	76.0%	1,619	24.0%	6,758
November 2015	13,321	445	20	14,527	4,417	30.4%	1,475	10.2%	347	2.4%	3,942	27.1%	1,513	10.4%	2,833	19.5%	4,417	74.9%	1,477	25.1%	5,894
December 2015	13,186	603	28	14,236	4,530	31.8%	1,544	10.8%	370	2.6%	3,709	26.1%	1,567	11.0%	2,516	17.7%	4,530	74.6%	1,544	25.4%	6,074
January 2016	13,499	551	40	14,655	4,686	32.0%	1,573	10.7%	282	1.9%	4,020	27.4%	1,482	10.1%	2,612	17.8%	4,686	74.9%	1,571	25.1%	6,257
February 2016	13,927	590	40	15,143	4,974	32.8%	1,620	10.7%	419	2.8%	3,836	25.3%	1,627	10.7%	2,667	17.6%	4,974	75.4%	1,622	24.6%	6,596
March 2016	14,064	446	32	15,619	5,000	32.0%	1,671	10.7%	428	2.7%	3,912	25.0%	1,812	11.6%	2,796	17.9%	5,000	75.0%	1,669	25.0%	6,669
April 2016	13,995	448	29	15,326	5,065	33.0%	1,541	10.1%	348	2.3%	3,774	24.6%	1,742	11.4%	2,856	18.6%	5,065	76.7%	1,542	23.3%	6,607
May 2016	14,389	413	26	15,806	5,238	33.1%	1,634	10.3%	393	2.5%	3,902	24.7%	1,852	11.7%	2,787	17.6%	5,238	76.2%	1,633	23.8%	6,871
June 2016	13,304	396	26	14,592	4,602	31.5%	1,460	10.0%	336	2.3%	3,687	25.3%	1,808	12.4%	2,699	18.5%	4,602	75.9%	1,461	24.1%	6,063
<b>July 2016</b>	<b>11,304</b>	<b>338</b>	<b>25</b>	<b>12,531</b>	<b>3,663</b>	<b>29.2%</b>	<b>1,186</b>	<b>9.5%</b>	<b>295</b>	<b>2.4%</b>	<b>3,477</b>	<b>27.7%</b>	<b>1,376</b>	<b>11.0%</b>	<b>2,534</b>	<b>20.2%</b>	<b>3,663</b>	<b>75.5%</b>	<b>1,187</b>	<b>24.5%</b>	<b>4,850</b>
<b>Monthly Average</b>	<b>13,332</b>	<b>456</b>	<b>27</b>	<b>14,656</b>	<b>4,631</b>	<b>31.6%</b>	<b>1,488</b>	<b>10.2%</b>	<b>374</b>	<b>2.6%</b>	<b>3,809</b>	<b>26.0%</b>	<b>1,616</b>	<b>11.0%</b>	<b>2,736</b>	<b>18.7%</b>	<b>4,631</b>	<b>75.7%</b>	<b>1,488</b>	<b>24.3%</b>	<b>6,120</b>
<b>Overall Total</b>	<b>173,313</b>	<b>5,928</b>		<b>190,526</b>	<b>60,208</b>		<b>19,348</b>		<b>4,860</b>		<b>49,522</b>		<b>21,014</b>		<b>35,574</b>		<b>60,208</b>	<b>75.7%</b>	<b>19,349</b>	<b>24.3%</b>	<b>79,557</b>

<sup>1</sup> Comes from three distinct sources: (1) the Automatic Call Distribution (ACD) phone system; which keeps a count of the number of calls and call routing; (2) Monthly NJSpirit Intakes; which record decision making on calls received by hotline screeners, and (3) NJSpirit extracts of assigned CWS Referrals and CPS Reports.

<sup>2</sup> The number of Intakes, CPS Reports, and CWS Referrals are based on an extract from NJSpirit. Data extracted by the Office of Research, Evaluation, and Reporting on **August 26, 2016** includes all Intakes, CPS Reports, and CWS Referrals received from **July 1, 2016 through July 31, 2016**.

<sup>3</sup> The number calls received through the ACD System that were directed to a screener from any call-in phone number.

<sup>4</sup> The number of calls received through the ACD System that are abandoned either while waiting in queue or while ringing.

<sup>5</sup> The number of Intakes entered in NJSpirit from the number of calls received.

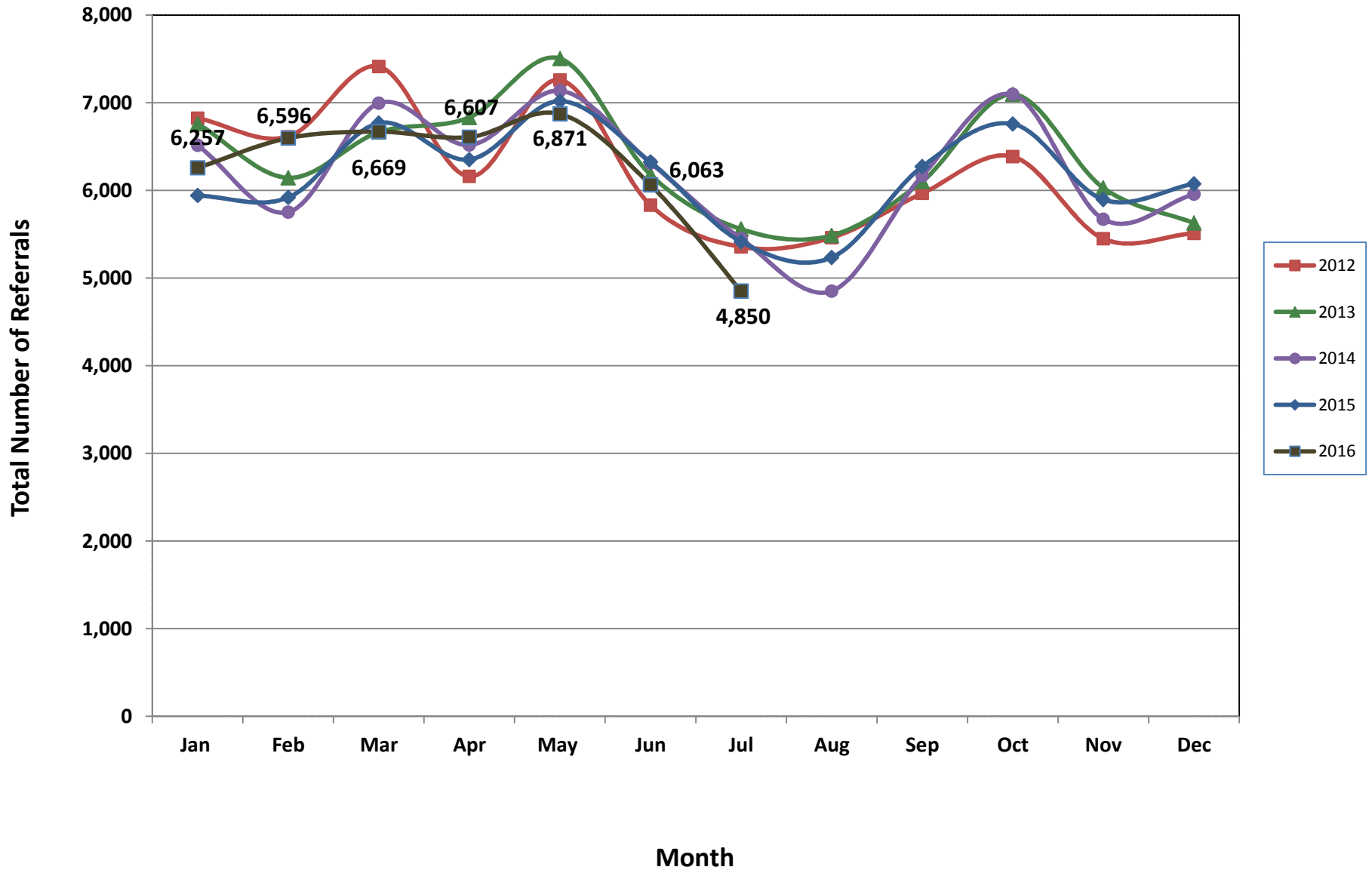
<sup>6</sup> The number of Intakes recorded in NJSpirit, by type of Intake. There is not a one-to-one relationship between an ACD call and an Intake; multiple calls to State Central Registry (SCR) may result in a single Intake, or one call may result in multiple Intakes.

<sup>7</sup> Intake: The process of documenting: a report of alleged abuse or neglect of a child (CPS); a request for services on behalf of a child, or a referral of a child for services (CWS); a call in which the caller provides additional or clarifying information about a current service case or active investigation (RI); informing a caller of, or referring a caller to, services available from other private or public sources (I&R); a call that requires no action by CP&P (NAR); or a response to a simple inquiry (IO).

<sup>8</sup> NJ SPIRIT: NJ Statewide Protection Investigation and Reporting Information Tool case management system



### CP&P Annual Trends in CPS Reports and CWS Referrals



The data contained in this report is considered preliminary and as a result, these figures might be different than the final reported figures. The data is produced for continuous quality improvement.

**Table 2: Assignments to CP&P Offices: CPS Reports and CWS Referrals<sup>1</sup>**

Intake Date <sup>3</sup>		CPS Reports <sup>2</sup>	CWS Referrals <sup>2</sup>	Total Assignments <sup>2</sup>
2012	Jan 2012	5,530	1,294	6,824
	Feb 2012	5,358	1,255	6,613
	Mar 2012	5,985	1,428	7,413
	Apr 2012	4,899	1,259	6,158
	May 2012	5,874	1,385	7,259
	Jun 2012	4,640	1,190	5,830
	Jul 2012	4,254	1,101	5,355
	Aug 2012	4,325	1,135	5,460
	Sep 2012	4,769	1,196	5,965
	Oct 2012	5,178	1,207	6,385
	Nov 2012	4,310	1,138	5,448
	Dec 2012	4,394	1,116	5,510
	<b>Total</b>	<b>59,516</b>	<b>14,704</b>	<b>74,220</b>
2013	Jan 2013	5,464	1,296	6,760
	Feb 2013	4,966	1,177	6,143
	Mar 2013	5,355	1,309	6,664
	Apr 2013	5,430	1,402	6,832
	May 2013	5,993	1,510	7,503
	Jun 2013	4,947	1,230	6,177
	Jul 2013	4,330	1,228	5,558
	Aug 2013	4,330	1,155	5,485
	Sep 2013	4,851	1,251	6,102
	Oct 2013	5,614	1,481	7,095
	Nov 2013	4,694	1,334	6,028
	Dec 2013	4,397	1,229	5,626
	<b>Total</b>	<b>60,371</b>	<b>15,602</b>	<b>75,973</b>
2014	Jan 2014	5,097	1,416	6,513
	Feb 2014	4,457	1,295	5,752
	Mar 2014	5,408	1,586	6,994
	Apr 2014	5,049	1,467	6,516
	May 2014	5,501	1,635	7,136
	Jun 2014	4,796	1,517	6,313
	Jul 2014	4,202	1,247	5,449
	Aug 2014	3,629	1,222	4,851
	Sep 2014	4,668	1,498	6,166
	Oct 2014	5,509	1,586	7,095
	Nov 2014	4,254	1,416	5,670
	Dec 2014	4,509	1,447	5,956
	<b>Total</b>	<b>57,079</b>	<b>17,332</b>	<b>74,411</b>

**Table 2: Assignments to CP&P Offices: CPS Reports and CWS Referrals<sup>1</sup>**

Intake Date <sup>3</sup>		CPS Reports <sup>2</sup>	CWS Referrals <sup>2</sup>	Total Assignments <sup>2</sup>
2015	Jan 2015	4,549	1,391	5,940
	Feb 2015	4,574	1,345	5,919
	Mar 2015	5,187	1,580	6,767
	Apr 2015	4,967	1,384	6,351
	May 2015	5,457	1,561	7,018
	Jun 2015	4,887	1,436	6,323
	Jul 2015	4,140	1,273	5,413
	Aug 2015	3,978	1,256	5,234
	Sep 2015	4,776	1,495	6,271
	Oct 2015	5,139	1,619	6,758
	Nov 2015	4,417	1,477	5,894
	Dec 2015	4,530	1,544	6,074
	<b>Total</b>	<b>56,601</b>	<b>17,361</b>	<b>73,962</b>
2016	Jan 2016	4,686	1,571	6,257
	Feb 2016	4,974	1,622	6,596
	Mar 2016	5,000	1,669	6,669
	Apr 2016	5,065	1,542	6,607
	May 2016	5,238	1,633	6,871
	Jun 2016	4,602	1,461	6,063
	Jul 2016	3,663	1,187	4,850
	<b>Total</b>	<b>33,228</b>	<b>10,685</b>	<b>43,913</b>
<b>Grand Total</b>		<b>266,795</b>	<b>75,684</b>	<b>342,479</b>

<sup>1</sup>Source of Data: NJ SPIRIT

<sup>2</sup>A CPS Report or a CWS Referral may include multiple children in a family, with one or more allegation or request for services. In these cases, each CPS Report or CWS Referral is counted once - the CPS Report or the CWS Referral is the unit of analysis rather than the child.

<sup>3</sup>Prior to January 2014, the number of CPS Reports and CWS Referrals was based on the type of assignment of the CPS Report or CWS Referral. Beginning in January 2014, the number of CPS Reports and CWS Referrals is based on the number of CPS Reports and CWS Referrals received.

**Table 3: Source of CPS Reports and CWS Referrals**

CPS Reports and CWS Referrals	Source	Jul 2015	Aug 2015	Sep 2015	Oct 2015	Nov 2015	Dec 2015	Jan 2016	Feb 2016	Mar 2016	Apr 2016	May 2016	Jun 2016	Jul 2016		13 Month Total	
	School Staff	183	75	1,123	1,763	1,454	1,596	1,569	1,900	1,690	1,646	1,765	982	143	3%	15,889	20%
	Healthcare Provider	816	832	780	825	766	780	830	852	892	895	823	814	771	16%	10,676	13%
	Law Enforcement	1082	1,010	1,040	1,003	909	910	910	953	1,052	1,030	1,056	1,152	1,048	22%	13,155	17%
	Government Agency	495	449	437	426	376	389	412	394	448	410	419	439	407	8%	5,501	7%
	Parent	594	592	589	518	451	495	529	504	503	566	597	546	521	11%	7,005	9%
	Relative/Friend/Neighbor	604	595	592	526	466	455	446	454	424	473	553	540	472	10%	6,600	8%
	Anonymous	611	622	739	710	609	587	628	612	676	662	777	697	560	12%	8,490	11%
	CP&P	119	110	123	137	121	112	113	133	155	104	133	120	112	2%	1,592	2%
	Court/Legal	155	113	115	119	108	108	119	132	154	137	141	124	143	3%	1,668	2%
	Community Group/Individual	280	297	243	306	240	255	294	274	262	269	236	238	262	5%	3,456	4%
	Facility Staff (incl Correctional Facility)	92	105	78	83	83	81	91	80	76	88	64	68	70	1%	1,059	1%
	Child (Self)	44	67	47	34	31	21	41	37	36	46	37	38	46	1%	525	1%
	Other	327	344	348	288	265	274	259	253	286	257	252	285	274	6%	3,712	5%
	Daycare/Babysitter	11	23	17	20	15	11	16	18	15	24	18	20	21	0%	229	0%
<b>Total</b>	<b>5,413</b>	<b>5,234</b>	<b>6,271</b>	<b>6,758</b>	<b>5,894</b>	<b>6,074</b>	<b>6,257</b>	<b>6,596</b>	<b>6,669</b>	<b>6,607</b>	<b>6,871</b>	<b>6,063</b>	<b>4,850</b>		<b>79,557</b>		

**Table 4: Monthly Count of CPS Reports and CWS Referrals Assigned to Counties**

County														Average Number of Assignments Last 13 Months	Jun 16 to Jul 16 Numerical Difference
	Jul 2015	Aug 2015	Sep 2015	Oct 2015	Nov 2015	Dec 2015	Jan 2016	Feb 2016	Mar 2016	April 2016	May 2016	Jun 2016	Jul 2016		
Atlantic	218	227	295	267	227	255	251	284	265	250	291	221	184	249	-37
Bergen	284	257	345	411	336	394	333	392	369	321	385	354	251	341	-103
Burlington	263	284	307	303	258	268	275	315	309	321	321	260	238	286	-22
Camden	449	438	516	609	461	498	558	551	527	573	608	532	391	516	-141
Cape May	78	86	92	112	75	89	83	65	79	94	82	67	71	83	4
Cumberland	173	152	231	215	177	174	195	179	206	219	245	202	184	196	-18
Essex	583	565	635	675	660	625	685	701	752	743	717	644	534	655	-110
Gloucester	258	255	247	300	245	261	251	252	285	267	233	234	212	254	-22
Hudson	352	325	399	451	342	431	424	450	412	403	481	400	304	398	-96
Hunterdon	48	38	58	52	37	39	53	58	46	62	38	42	36	47	-6
Mercer	198	226	263	324	254	252	265	263	276	278	282	255	227	259	-28
Middlesex	335	317	400	466	387	435	419	439	479	492	470	387	325	412	-62
Monmouth	301	301	364	361	343	308	328	413	361	373	366	353	272	342	-81
Morris	186	175	250	239	216	215	238	228	217	222	247	228	146	216	-82
Ocean	376	369	376	383	401	336	403	378	366	365	415	354	316	372	-38
Passaic	317	345	422	461	422	449	421	504	510	455	456	401	299	420	-102
Salem	68	53	102	72	89	81	94	67	94	89	82	80	63	80	-17
Somerset	158	128	155	153	157	143	141	160	165	152	169	160	139	152	-21
Sussex	103	84	89	104	103	95	95	113	105	94	88	91	90	96	-1
Union	228	215	276	304	257	318	299	331	350	336	373	295	255	295	-40
Warren	89	94	101	107	81	78	93	87	77	99	106	88	62	89	-26
<b>County Subtotals</b>	<b>5,065</b>	<b>4,934</b>	<b>5,923</b>	<b>6,369</b>	<b>5,528</b>	<b>5,744</b>	<b>5,904</b>	<b>6,230</b>	<b>6,250</b>	<b>6,208</b>	<b>6,455</b>	<b>5,648</b>	<b>4,599</b>	<b>5,758</b>	<b>-1,049</b>
Central Region IAIU	24	41	53	52	56	62	44	53	46	59	55	53	33	49	-20
Metro Region IAIU	56	30	36	50	48	46	43	60	64	60	68	61	36	51	-25
Northern Region IAIU	61	43	45	66	58	44	58	58	66	71	70	66	27	56	-39
Southern Region IAIU	63	59	60	83	72	61	79	64	76	90	73	92	44	70	-48
<b>IAIU Subtotals</b>	<b>204</b>	<b>173</b>	<b>194</b>	<b>251</b>	<b>234</b>	<b>213</b>	<b>224</b>	<b>235</b>	<b>252</b>	<b>280</b>	<b>266</b>	<b>272</b>	<b>140</b>	<b>226</b>	<b>-132</b>
<b>Unable to Determine<sup>1</sup></b>	<b>142</b>	<b>124</b>	<b>153</b>	<b>136</b>	<b>131</b>	<b>114</b>	<b>128</b>	<b>126</b>	<b>165</b>	<b>115</b>	<b>149</b>	<b>140</b>	<b>110</b>	<b>133</b>	<b>-30</b>
<b>Other Offices</b>	<b>2</b>	<b>3</b>	<b>1</b>	<b>2</b>	<b>1</b>	<b>3</b>	<b>1</b>	<b>5</b>	<b>2</b>	<b>4</b>	<b>1</b>	<b>3</b>	<b>1</b>	<b>2</b>	<b>-2</b>
<b>Grand Total</b>	<b>5,413</b>	<b>5,234</b>	<b>6,271</b>	<b>6,758</b>	<b>5,894</b>	<b>6,074</b>	<b>6,257</b>	<b>6,596</b>	<b>6,669</b>	<b>6,607</b>	<b>6,871</b>	<b>6,063</b>	<b>4,850</b>	<b>6,120</b>	<b>-1213</b>

<sup>1</sup>CPS Reports or CWS Referrals not assigned to an office through the Assignment Designee, but were assigned to an office for an assessment or investigation.



**Table 5: Monthly Count of CPS Reports and CWS Referrals Assigned to CP&P Local Offices**

County	Local Office	Type of Referral														Total
			Jul 2015	Aug 2015	Sep 2015	Oct 2015	Nov 2015	Dec 2015	Jan 2016	Feb 2016	Mar 2016	Apr 2016	May 2016	Jun 2016	Jul 2016	
ATLANTIC	Atlantic East	CPS	100	107	134	115	107	113	110	133	144	97	129	108	90	1,487
		CWS	30	26	35	30	32	36	43	34	27	35	41	34	25	428
		<b>Total</b>	<b>130</b>	<b>133</b>	<b>169</b>	<b>145</b>	<b>139</b>	<b>149</b>	<b>153</b>	<b>167</b>	<b>171</b>	<b>132</b>	<b>170</b>	<b>142</b>	<b>115</b>	<b>1,915</b>
	Atlantic West	CPS	72	77	94	101	70	82	70	88	71	95	94	66	51	1,031
		CWS	16	17	32	21	18	24	28	29	23	23	27	13	18	289
		<b>Total</b>	<b>88</b>	<b>94</b>	<b>126</b>	<b>122</b>	<b>88</b>	<b>106</b>	<b>98</b>	<b>117</b>	<b>94</b>	<b>118</b>	<b>121</b>	<b>79</b>	<b>69</b>	<b>1,320</b>
	County Totals	CPS	172	184	228	216	177	195	180	221	215	192	223	174	141	2,518
		CWS	46	43	67	51	50	60	71	63	50	58	68	47	43	717
		<b>Total</b>	<b>218</b>	<b>227</b>	<b>295</b>	<b>267</b>	<b>227</b>	<b>255</b>	<b>251</b>	<b>284</b>	<b>265</b>	<b>250</b>	<b>291</b>	<b>221</b>	<b>184</b>	<b>3,235</b>
BERGEN	Bergen Central	CPS	83	72	98	117	98	119	128	107	121	101	134	121	63	1,362
		CWS	29	29	36	50	37	41	39	51	48	32	40	39	37	508
		<b>Total</b>	<b>112</b>	<b>101</b>	<b>134</b>	<b>167</b>	<b>135</b>	<b>160</b>	<b>167</b>	<b>158</b>	<b>169</b>	<b>133</b>	<b>174</b>	<b>160</b>	<b>100</b>	<b>1,870</b>
	Bergen South	CPS	127	106	157	177	144	164	121	174	150	136	162	143	109	1,870
		CWS	45	50	54	67	57	70	45	60	50	52	49	51	42	692
		<b>Total</b>	<b>172</b>	<b>156</b>	<b>211</b>	<b>244</b>	<b>201</b>	<b>234</b>	<b>166</b>	<b>234</b>	<b>200</b>	<b>188</b>	<b>211</b>	<b>194</b>	<b>151</b>	<b>2,562</b>
	County Totals	CPS	210	178	255	294	242	283	249	281	271	237	296	264	172	3,232
		CWS	74	79	90	117	94	111	84	111	98	84	89	90	79	1,200
		<b>Total</b>	<b>284</b>	<b>257</b>	<b>345</b>	<b>411</b>	<b>336</b>	<b>394</b>	<b>333</b>	<b>392</b>	<b>369</b>	<b>321</b>	<b>385</b>	<b>354</b>	<b>251</b>	<b>4,432</b>
BURLINGTON	Burlington East	CPS	97	110	110	121	93	118	117	127	105	131	128	84	94	1,435
		CWS	38	36	36	31	28	20	32	39	38	32	39	34	34	437
		<b>Total</b>	<b>135</b>	<b>146</b>	<b>146</b>	<b>152</b>	<b>121</b>	<b>138</b>	<b>149</b>	<b>166</b>	<b>143</b>	<b>163</b>	<b>167</b>	<b>118</b>	<b>128</b>	<b>1,872</b>
	Burlington West	CPS	96	97	120	119	107	101	92	109	124	130	117	109	87	1,408
		CWS	32	41	41	32	30	29	34	40	42	28	37	33	23	442
		<b>Total</b>	<b>128</b>	<b>138</b>	<b>161</b>	<b>151</b>	<b>137</b>	<b>130</b>	<b>126</b>	<b>149</b>	<b>166</b>	<b>158</b>	<b>154</b>	<b>142</b>	<b>110</b>	<b>1,850</b>
	County Totals	CPS	193	207	230	240	200	219	209	236	229	261	245	193	181	2,843
		CWS	70	77	77	63	58	49	66	79	80	60	76	67	57	879
		<b>Total</b>	<b>263</b>	<b>284</b>	<b>307</b>	<b>303</b>	<b>258</b>	<b>268</b>	<b>275</b>	<b>315</b>	<b>309</b>	<b>321</b>	<b>321</b>	<b>260</b>	<b>238</b>	<b>3,722</b>
CAMDEN	Camden Central	CPS	105	93	116	148	101	104	127	119	104	136	123	122	92	1,490
		CWS	29	25	36	38	34	24	34	34	44	36	38	53	36	461
		<b>Total</b>	<b>134</b>	<b>118</b>	<b>152</b>	<b>186</b>	<b>135</b>	<b>128</b>	<b>161</b>	<b>153</b>	<b>148</b>	<b>172</b>	<b>161</b>	<b>175</b>	<b>128</b>	<b>1,951</b>
	Camden East	CPS	81	105	109	123	100	106	108	106	104	114	123	94	86	1,359
		CWS	30	28	21	21	32	27	28	27	16	27	33	28	31	349
		<b>Total</b>	<b>111</b>	<b>133</b>	<b>130</b>	<b>144</b>	<b>132</b>	<b>133</b>	<b>136</b>	<b>133</b>	<b>120</b>	<b>141</b>	<b>156</b>	<b>122</b>	<b>117</b>	<b>1,708</b>
	Camden North	CPS	82	77	95	120	83	108	104	105	102	132	115	95	56	1,274
		CWS	26	24	33	40	17	34	40	45	46	27	47	34	18	431
		<b>Total</b>	<b>108</b>	<b>101</b>	<b>128</b>	<b>160</b>	<b>100</b>	<b>142</b>	<b>144</b>	<b>150</b>	<b>148</b>	<b>159</b>	<b>162</b>	<b>129</b>	<b>74</b>	<b>1,705</b>
	Camden South	CPS	76	66	83	88	77	75	85	86	77	79	97	80	56	1,025
		CWS	20	20	23	31	17	20	32	29	34	22	32	26	16	322
		<b>Total</b>	<b>96</b>	<b>86</b>	<b>106</b>	<b>119</b>	<b>94</b>	<b>95</b>	<b>117</b>	<b>115</b>	<b>111</b>	<b>101</b>	<b>129</b>	<b>106</b>	<b>72</b>	<b>1,347</b>
	County Totals	CPS	344	341	403	479	361	393	424	416	387	461	458	391	290	5,148
		CWS	105	97	113	130	100	105	134	135	140	112	150	141	101	1,563
		<b>Total</b>	<b>449</b>	<b>438</b>	<b>516</b>	<b>609</b>	<b>461</b>	<b>498</b>	<b>558</b>	<b>551</b>	<b>527</b>	<b>573</b>	<b>608</b>	<b>532</b>	<b>391</b>	<b>6,711</b>
CAPE MAY	Cape May	CPS	63	69	72	87	51	64	61	51	57	72	68	51	51	817
		CWS	15	17	20	25	24	25	22	14	22	22	14	16	20	256
		<b>Total</b>	<b>78</b>	<b>86</b>	<b>92</b>	<b>112</b>	<b>75</b>	<b>89</b>	<b>83</b>	<b>65</b>	<b>79</b>	<b>94</b>	<b>82</b>	<b>67</b>	<b>71</b>	<b>1,073</b>
	County Totals	CPS	63	69	72	87	51	64	61	51	57	72	68	51	51	817
		CWS	15	17	20	25	24	25	22	14	22	22	14	16	20	256
		<b>Total</b>	<b>78</b>	<b>86</b>	<b>92</b>	<b>112</b>	<b>75</b>	<b>89</b>	<b>83</b>	<b>65</b>	<b>79</b>	<b>94</b>	<b>82</b>	<b>67</b>	<b>71</b>	<b>1,073</b>
CUMBERLAND	Cumberland East	CPS	33	36	61	42	39	46	59	52	48	64	81	61	46	668
		CWS	6	9	18	26	18	14	12	13	16	18	14	16	18	198
		<b>Total</b>	<b>39</b>	<b>45</b>	<b>79</b>	<b>68</b>	<b>57</b>	<b>60</b>	<b>71</b>	<b>65</b>	<b>64</b>	<b>82</b>	<b>95</b>	<b>77</b>	<b>64</b>	<b>866</b>
	Cumberland West	CPS	108	81	123	116	88	83	99	96	116	102	115	101	96	1,324
		CWS	26	26	29	31	32	31	25	18	26	35	35	24	24	362
		<b>Total</b>	<b>134</b>	<b>107</b>	<b>152</b>	<b>147</b>	<b>120</b>	<b>114</b>	<b>124</b>	<b>114</b>	<b>142</b>	<b>137</b>	<b>150</b>	<b>125</b>	<b>120</b>	<b>1,686</b>
	County Totals	CPS	141	117	184	158	127	129	158	148	164	166	196	162	142	1,992
		CWS	32	35	47	57	50	45	37	31	42	53	49	40	42	560
		<b>Total</b>	<b>173</b>	<b>152</b>	<b>231</b>	<b>215</b>	<b>177</b>	<b>174</b>	<b>195</b>	<b>179</b>	<b>206</b>	<b>219</b>	<b>245</b>	<b>202</b>	<b>184</b>	<b>2,552</b>

**Table 5: Monthly Count of CPS Reports and CWS Referrals Assigned to CP&P Local Offices**

County	Local Office	Type of Referral														Total
			Jul 2015	Aug 2015	Sep 2015	Oct 2015	Nov 2015	Dec 2015	Jan 2016	Feb 2016	Mar 2016	Apr 2016	May 2016	Jun 2016	Jul 2016	
ESSEX	Essex Central	CPS	76	85	80	105	87	72	82	85	108	101	108	112	75	1,176
		CWS	39	41	26	42	37	39	43	37	42	38	41	23	27	475
		<b>Total</b>	<b>115</b>	<b>126</b>	<b>106</b>	<b>147</b>	<b>124</b>	<b>111</b>	<b>125</b>	<b>122</b>	<b>150</b>	<b>139</b>	<b>149</b>	<b>135</b>	<b>102</b>	<b>1,651</b>
	Essex North	CPS	42	40	53	53	54	66	53	73	75	48	59	54	58	728
		CWS	18	17	22	23	21	30	29	25	35	21	19	24	29	313
		<b>Total</b>	<b>60</b>	<b>57</b>	<b>75</b>	<b>76</b>	<b>75</b>	<b>96</b>	<b>82</b>	<b>98</b>	<b>110</b>	<b>69</b>	<b>78</b>	<b>78</b>	<b>87</b>	<b>1,041</b>
	Essex South	CPS	49	49	66	57	58	56	63	79	66	56	60	62	47	768
		CWS	19	16	25	23	16	17	27	22	26	26	24	34	19	294
		<b>Total</b>	<b>68</b>	<b>65</b>	<b>91</b>	<b>80</b>	<b>74</b>	<b>73</b>	<b>90</b>	<b>101</b>	<b>92</b>	<b>82</b>	<b>84</b>	<b>96</b>	<b>66</b>	<b>1,062</b>
	Newark Center City	CPS	61	64	89	83	82	78	91	95	87	110	97	95	64	1,096
		CWS	23	29	29	35	36	39	26	30	42	45	34	25	24	417
		<b>Total</b>	<b>84</b>	<b>93</b>	<b>118</b>	<b>118</b>	<b>118</b>	<b>117</b>	<b>117</b>	<b>125</b>	<b>129</b>	<b>155</b>	<b>131</b>	<b>120</b>	<b>88</b>	<b>1,513</b>
	Newark Northeast	CPS	81	69	101	83	81	65	92	89	99	115	93	72	56	1,096
		CWS	31	26	25	37	34	33	39	30	36	27	47	24	22	411
		<b>Total</b>	<b>112</b>	<b>95</b>	<b>126</b>	<b>120</b>	<b>115</b>	<b>98</b>	<b>131</b>	<b>119</b>	<b>135</b>	<b>142</b>	<b>140</b>	<b>96</b>	<b>78</b>	<b>1,507</b>
Newark South	CPS	113	94	88	100	106	92	107	96	104	121	87	80	80	1,268	
	CWS	31	35	31	34	48	38	33	40	32	35	48	39	33	477	
	<b>Total</b>	<b>144</b>	<b>129</b>	<b>119</b>	<b>134</b>	<b>154</b>	<b>130</b>	<b>140</b>	<b>136</b>	<b>136</b>	<b>156</b>	<b>135</b>	<b>119</b>	<b>113</b>	<b>1,745</b>	
County Totals	CPS	422	401	477	481	468	429	488	517	539	551	504	475	380	6,132	
	CWS	161	164	158	194	192	196	197	184	213	192	213	169	154	2,387	
	<b>Total</b>	<b>583</b>	<b>565</b>	<b>635</b>	<b>675</b>	<b>660</b>	<b>625</b>	<b>685</b>	<b>701</b>	<b>752</b>	<b>743</b>	<b>717</b>	<b>644</b>	<b>534</b>	<b>8,519</b>	
GLOUCESTER	Gloucester East	CPS	85	98	98	109	91	101	97	93	112	99	84	89	75	1,231
		CWS	36	34	24	26	17	25	35	24	38	31	26	26	28	370
		<b>Total</b>	<b>121</b>	<b>132</b>	<b>122</b>	<b>135</b>	<b>108</b>	<b>126</b>	<b>132</b>	<b>117</b>	<b>150</b>	<b>130</b>	<b>110</b>	<b>115</b>	<b>103</b>	<b>1,601</b>
	Gloucester West	CPS	118	93	94	133	103	109	91	102	106	115	87	85	90	1,326
		CWS	19	30	31	32	34	26	28	33	29	22	36	34	19	373
		<b>Total</b>	<b>137</b>	<b>123</b>	<b>125</b>	<b>165</b>	<b>137</b>	<b>135</b>	<b>119</b>	<b>135</b>	<b>135</b>	<b>137</b>	<b>123</b>	<b>119</b>	<b>109</b>	<b>1,699</b>
	County Totals	CPS	203	191	192	242	194	210	188	195	218	214	171	174	165	2,557
CWS		55	64	55	58	51	51	63	57	67	53	62	60	47	743	
<b>Total</b>		<b>258</b>	<b>255</b>	<b>247</b>	<b>300</b>	<b>245</b>	<b>261</b>	<b>251</b>	<b>252</b>	<b>285</b>	<b>267</b>	<b>233</b>	<b>234</b>	<b>212</b>	<b>3,300</b>	
HUDSON	Hudson Central	CPS	71	60	62	72	59	79	75	89	74	67	83	52	61	904
		CWS	24	30	25	26	16	25	23	28	25	31	23	34	21	331
		<b>Total</b>	<b>95</b>	<b>90</b>	<b>87</b>	<b>98</b>	<b>75</b>	<b>104</b>	<b>98</b>	<b>117</b>	<b>99</b>	<b>98</b>	<b>106</b>	<b>86</b>	<b>82</b>	<b>1,235</b>
	Hudson North	CPS	60	54	91	86	74	87	95	77	96	88	101	77	62	1,048
		CWS	18	16	22	31	29	30	37	35	34	27	31	30	23	363
		<b>Total</b>	<b>78</b>	<b>70</b>	<b>113</b>	<b>117</b>	<b>103</b>	<b>117</b>	<b>132</b>	<b>112</b>	<b>130</b>	<b>115</b>	<b>132</b>	<b>107</b>	<b>85</b>	<b>1,411</b>
	Hudson South	CPS	79	71	66	93	61	93	60	81	60	68	86	71	52	941
		CWS	23	19	31	28	22	28	20	25	23	21	45	30	28	343
		<b>Total</b>	<b>102</b>	<b>90</b>	<b>97</b>	<b>121</b>	<b>83</b>	<b>121</b>	<b>80</b>	<b>106</b>	<b>83</b>	<b>89</b>	<b>131</b>	<b>101</b>	<b>80</b>	<b>1,284</b>
	Hudson West	CPS	57	55	77	82	60	74	87	90	71	79	87	84	49	952
		CWS	20	20	25	33	21	15	27	25	29	22	25	22	8	292
		<b>Total</b>	<b>77</b>	<b>75</b>	<b>102</b>	<b>115</b>	<b>81</b>	<b>89</b>	<b>114</b>	<b>115</b>	<b>100</b>	<b>101</b>	<b>112</b>	<b>106</b>	<b>57</b>	<b>1,244</b>
County Totals	CPS	267	240	296	333	254	333	317	337	301	302	357	284	224	3,845	
	CWS	85	85	103	118	88	98	107	113	111	101	124	116	80	1,329	
	<b>Total</b>	<b>352</b>	<b>325</b>	<b>399</b>	<b>451</b>	<b>342</b>	<b>431</b>	<b>424</b>	<b>450</b>	<b>412</b>	<b>403</b>	<b>481</b>	<b>400</b>	<b>304</b>	<b>5,174</b>	
HUNTERDON	Hunterdon	CPS	35	27	41	40	27	27	35	41	33	49	29	33	28	445
		CWS	13	11	17	12	10	12	18	17	13	13	9	9	8	162
		<b>Total</b>	<b>48</b>	<b>38</b>	<b>58</b>	<b>52</b>	<b>37</b>	<b>39</b>	<b>53</b>	<b>58</b>	<b>46</b>	<b>62</b>	<b>38</b>	<b>42</b>	<b>36</b>	<b>607</b>
	County Totals	CPS	35	27	41	40	27	27	35	41	33	49	29	33	28	445
		<b>Total</b>	<b>48</b>	<b>38</b>	<b>58</b>	<b>52</b>	<b>37</b>	<b>39</b>	<b>53</b>	<b>58</b>	<b>46</b>	<b>62</b>	<b>38</b>	<b>42</b>	<b>36</b>	<b>607</b>
MERCER	Mercer North	CPS	70	82	87	115	79	89	91	98	100	95	93	103	92	1,194
		CWS	29	18	33	40	46	33	37	29	33	23	27	32	21	401
		<b>Total</b>	<b>99</b>	<b>100</b>	<b>120</b>	<b>155</b>	<b>125</b>	<b>122</b>	<b>128</b>	<b>127</b>	<b>133</b>	<b>118</b>	<b>120</b>	<b>135</b>	<b>113</b>	<b>1,595</b>
	Mercer South	CPS	76	107	107	125	98	100	102	108	102	121	124	91	81	1,342
		CWS	23	19	36	44	31	30	35	28	41	39	38	29	33	426
		<b>Total</b>	<b>99</b>	<b>126</b>	<b>143</b>	<b>169</b>	<b>129</b>	<b>130</b>	<b>137</b>	<b>136</b>	<b>143</b>	<b>160</b>	<b>162</b>	<b>120</b>	<b>114</b>	<b>1,768</b>
	County Totals	CPS	146	189	194	240	177	189	193	206	202	216	217	194	173	2,536
CWS		52	37	69	84	77	63	72	57	74	62	65	61	54	827	
<b>Total</b>		<b>198</b>	<b>226</b>	<b>263</b>	<b>324</b>	<b>254</b>	<b>252</b>	<b>265</b>	<b>263</b>	<b>276</b>	<b>278</b>	<b>282</b>	<b>255</b>	<b>227</b>	<b>3,363</b>	

**Table 5: Monthly Count of CPS Reports and CWS Referrals Assigned to CP&P Local Offices**

County	Local Office	Type of Referral														Total
			Jul 2015	Aug 2015	Sep 2015	Oct 2015	Nov 2015	Dec 2015	Jan 2016	Feb 2016	Mar 2016	Apr 2016	May 2016	Jun 2016	Jul 2016	
MIDDLESEX	Middlesex Central	CPS	52	56	86	86	66	91	70	78	77	72	97	80	57	968
		CWS	25	18	28	27	20	27	25	23	25	32	31	26	19	326
		<b>Total</b>	<b>77</b>	<b>74</b>	<b>114</b>	<b>113</b>	<b>86</b>	<b>118</b>	<b>95</b>	<b>101</b>	<b>102</b>	<b>104</b>	<b>128</b>	<b>106</b>	<b>76</b>	<b>1,294</b>
	Middlesex Coastal	CPS	101	105	110	132	110	119	104	129	152	141	136	101	107	1,547
		CWS	43	24	33	35	38	33	41	46	39	39	29	35	26	461
		<b>Total</b>	<b>144</b>	<b>129</b>	<b>143</b>	<b>167</b>	<b>148</b>	<b>152</b>	<b>145</b>	<b>175</b>	<b>191</b>	<b>180</b>	<b>165</b>	<b>136</b>	<b>133</b>	<b>2,008</b>
	Middlesex West	CPS	94	84	105	132	118	114	132	131	133	151	135	117	90	1,536
		CWS	20	30	38	54	35	51	47	32	53	57	42	28	26	513
		<b>Total</b>	<b>114</b>	<b>114</b>	<b>143</b>	<b>186</b>	<b>153</b>	<b>165</b>	<b>179</b>	<b>163</b>	<b>186</b>	<b>208</b>	<b>177</b>	<b>145</b>	<b>116</b>	<b>2,049</b>
	County Totals	CPS	247	245	301	350	294	324	306	338	362	364	368	298	254	4,051
CWS		88	72	99	116	93	111	113	101	117	128	102	89	71	1,300	
<b>Total</b>		<b>335</b>	<b>317</b>	<b>400</b>	<b>466</b>	<b>387</b>	<b>435</b>	<b>419</b>	<b>439</b>	<b>479</b>	<b>492</b>	<b>470</b>	<b>387</b>	<b>325</b>	<b>5,351</b>	
MONMOUTH	Monmouth North	CPS	129	119	159	160	134	135	135	184	145	150	165	154	105	1,874
		CWS	37	33	58	51	50	47	35	44	38	47	40	36	29	545
		<b>Total</b>	<b>166</b>	<b>152</b>	<b>217</b>	<b>211</b>	<b>184</b>	<b>182</b>	<b>170</b>	<b>228</b>	<b>183</b>	<b>197</b>	<b>205</b>	<b>190</b>	<b>134</b>	<b>2,419</b>
	Monmouth South	CPS	108	111	118	118	118	95	115	130	137	124	121	127	102	1,524
		CWS	27	38	29	32	41	31	43	55	41	52	40	36	36	501
		<b>Total</b>	<b>135</b>	<b>149</b>	<b>147</b>	<b>150</b>	<b>159</b>	<b>126</b>	<b>158</b>	<b>185</b>	<b>178</b>	<b>176</b>	<b>161</b>	<b>163</b>	<b>138</b>	<b>2,025</b>
	County Totals	CPS	237	230	277	278	252	230	250	314	282	274	286	281	207	3,398
		CWS	64	71	87	83	91	78	78	99	79	99	80	72	65	1,046
		<b>Total</b>	<b>301</b>	<b>301</b>	<b>364</b>	<b>361</b>	<b>343</b>	<b>308</b>	<b>328</b>	<b>413</b>	<b>361</b>	<b>373</b>	<b>366</b>	<b>353</b>	<b>272</b>	<b>4,444</b>
	MORRIS	Morris East	CPS	61	59	85	95	68	47	73	77	81	63	74	75	48
CWS			27	20	29	26	27	27	24	34	27	23	35	22	22	343
<b>Total</b>			<b>88</b>	<b>79</b>	<b>114</b>	<b>121</b>	<b>95</b>	<b>74</b>	<b>97</b>	<b>111</b>	<b>108</b>	<b>86</b>	<b>109</b>	<b>97</b>	<b>70</b>	<b>1,249</b>
Morris West		CPS	69	74	100	87	90	98	114	83	73	98	102	86	56	1,130
		CWS	29	22	36	31	31	43	27	34	36	38	36	45	20	428
		<b>Total</b>	<b>98</b>	<b>96</b>	<b>136</b>	<b>118</b>	<b>121</b>	<b>141</b>	<b>141</b>	<b>117</b>	<b>109</b>	<b>136</b>	<b>138</b>	<b>131</b>	<b>76</b>	<b>1,558</b>
County Totals		CPS	130	133	185	182	158	145	187	160	154	161	176	161	104	2,036
		CWS	56	42	65	57	58	70	51	68	63	61	71	67	42	771
		<b>Total</b>	<b>186</b>	<b>175</b>	<b>250</b>	<b>239</b>	<b>216</b>	<b>215</b>	<b>238</b>	<b>228</b>	<b>217</b>	<b>222</b>	<b>247</b>	<b>228</b>	<b>146</b>	<b>2,807</b>
OCEAN		Ocean North	CPS	120	119	118	145	161	125	142	146	150	157	180	152	142
	CWS		34	39	43	32	57	43	63	50	43	42	46	44	29	565
	<b>Total</b>		<b>154</b>	<b>158</b>	<b>161</b>	<b>177</b>	<b>218</b>	<b>168</b>	<b>205</b>	<b>196</b>	<b>193</b>	<b>199</b>	<b>226</b>	<b>196</b>	<b>171</b>	<b>2,422</b>
	Ocean South	CPS	178	171	170	162	135	130	151	137	130	127	145	120	115	1,871
		CWS	44	40	45	44	48	38	47	45	43	39	44	38	30	545
		<b>Total</b>	<b>222</b>	<b>211</b>	<b>215</b>	<b>206</b>	<b>183</b>	<b>168</b>	<b>198</b>	<b>182</b>	<b>173</b>	<b>166</b>	<b>189</b>	<b>158</b>	<b>145</b>	<b>2,416</b>
	County Totals	CPS	298	290	288	307	296	255	293	283	280	284	325	272	257	3,728
		CWS	78	79	88	76	105	81	110	95	86	81	90	82	59	1,110
		<b>Total</b>	<b>376</b>	<b>369</b>	<b>376</b>	<b>383</b>	<b>401</b>	<b>336</b>	<b>403</b>	<b>378</b>	<b>366</b>	<b>365</b>	<b>415</b>	<b>354</b>	<b>316</b>	<b>4,838</b>
	PASSAIC	Passaic Central	CPS	118	133	159	161	163	178	144	202	169	166	175	183	122
CWS			52	55	55	91	66	68	68	89	89	66	82	55	41	877
<b>Total</b>			<b>170</b>	<b>188</b>	<b>214</b>	<b>252</b>	<b>229</b>	<b>246</b>	<b>212</b>	<b>291</b>	<b>258</b>	<b>232</b>	<b>257</b>	<b>238</b>	<b>163</b>	<b>2,950</b>
Passaic North		CPS	116	123	142	153	141	137	152	159	170	162	151	120	96	1,822
		CWS	31	34	66	56	52	66	57	54	82	61	48	43	40	690
		<b>Total</b>	<b>147</b>	<b>157</b>	<b>208</b>	<b>209</b>	<b>193</b>	<b>203</b>	<b>209</b>	<b>213</b>	<b>252</b>	<b>223</b>	<b>199</b>	<b>163</b>	<b>136</b>	<b>2,512</b>
County Totals		CPS	234	256	301	314	304	315	296	361	339	328	326	303	218	3,895
		CWS	83	89	121	147	118	134	125	143	171	127	130	98	81	1,567
		<b>Total</b>	<b>317</b>	<b>345</b>	<b>422</b>	<b>461</b>	<b>422</b>	<b>449</b>	<b>421</b>	<b>504</b>	<b>510</b>	<b>455</b>	<b>456</b>	<b>401</b>	<b>299</b>	<b>5,462</b>
SALEM		Salem	CPS	51	35	77	47	75	58	72	43	78	61	64	57	52
	CWS		17	18	25	25	14	23	22	24	16	28	18	23	11	264
	<b>Total</b>		<b>68</b>	<b>53</b>	<b>102</b>	<b>72</b>	<b>89</b>	<b>81</b>	<b>94</b>	<b>67</b>	<b>94</b>	<b>89</b>	<b>82</b>	<b>80</b>	<b>63</b>	<b>1,034</b>
	County Totals	CPS	51	35	77	47	75	58	72	43	78	61	64	57	52	770
		CWS	17	18	25	25	14	23	22	24	16	28	18	23	11	264
		<b>Total</b>	<b>68</b>	<b>53</b>	<b>102</b>	<b>72</b>	<b>89</b>	<b>81</b>	<b>94</b>	<b>67</b>	<b>94</b>	<b>89</b>	<b>82</b>	<b>80</b>	<b>63</b>	<b>1,034</b>
SOMERSET	Somerset	CPS	126	88	120	121	121	104	104	120	124	115	136	129	107	1,515
		CWS	32	40	35	32	36	39	37	40	41	37	33	31	32	465
		<b>Total</b>	<b>158</b>	<b>128</b>	<b>155</b>	<b>153</b>	<b>157</b>	<b>143</b>	<b>141</b>	<b>160</b>	<b>165</b>	<b>152</b>	<b>169</b>	<b>160</b>	<b>139</b>	<b>1,980</b>
	County Totals	CPS	126	88	120	121	121	104	104	120	124	115	136	129	107	1,515
		CWS	32	40	35	32	36	39	37	40	41	37	33	31	32	465
		<b>Total</b>	<b>158</b>	<b>128</b>	<b>155</b>	<b>153</b>	<b>157</b>	<b>143</b>	<b>141</b>	<b>160</b>	<b>165</b>	<b>152</b>	<b>169</b>	<b>160</b>	<b>139</b>	<b>1,980</b>

**Table 5: Monthly Count of CPS Reports and CWS Referrals Assigned to CP&P Local Offices**

County	Local Office	Type of Referral														Total
			Jul 2015	Aug 2015	Sep 2015	Oct 2015	Nov 2015	Dec 2015	Jan 2016	Feb 2016	Mar 2016	Apr 2016	May 2016	Jun 2016	Jul 2016	
SUSSEX	Sussex	CPS	86	71	73	83	72	68	82	83	76	77	71	68	74	984
		CWS	17	13	16	21	31	27	13	30	29	17	17	23	16	270
		<b>Total</b>	<b>103</b>	<b>84</b>	<b>89</b>	<b>104</b>	<b>103</b>	<b>95</b>	<b>95</b>	<b>113</b>	<b>105</b>	<b>94</b>	<b>88</b>	<b>91</b>	<b>90</b>	<b>1,254</b>
	County Totals	CPS	86	71	73	83	72	68	82	83	76	77	71	68	74	984
		CWS	17	13	16	21	31	27	13	30	29	17	17	23	16	270
<b>Total</b>		<b>103</b>	<b>84</b>	<b>89</b>	<b>104</b>	<b>103</b>	<b>95</b>	<b>95</b>	<b>113</b>	<b>105</b>	<b>94</b>	<b>88</b>	<b>91</b>	<b>90</b>	<b>1,254</b>	
UNION	Union Central	CPS	56	52	65	67	64	71	74	85	78	89	105	67	60	933
		CWS	25	26	24	24	14	27	32	29	30	24	23	29	24	331
		<b>Total</b>	<b>81</b>	<b>78</b>	<b>89</b>	<b>91</b>	<b>78</b>	<b>98</b>	<b>106</b>	<b>114</b>	<b>108</b>	<b>113</b>	<b>128</b>	<b>96</b>	<b>84</b>	<b>1,264</b>
	Union East	CPS	51	49	67	74	68	91	75	78	99	99	100	79	67	997
		CWS	8	23	27	35	26	34	25	30	25	28	25	28	26	340
		<b>Total</b>	<b>59</b>	<b>72</b>	<b>94</b>	<b>109</b>	<b>94</b>	<b>125</b>	<b>100</b>	<b>108</b>	<b>124</b>	<b>127</b>	<b>125</b>	<b>107</b>	<b>93</b>	<b>1,337</b>
	Union West	CPS	59	50	70	77	58	65	65	79	84	73	87	60	57	884
		CWS	29	15	23	27	27	30	28	30	34	23	33	32	21	352
		<b>Total</b>	<b>88</b>	<b>65</b>	<b>93</b>	<b>104</b>	<b>85</b>	<b>95</b>	<b>93</b>	<b>109</b>	<b>118</b>	<b>96</b>	<b>120</b>	<b>92</b>	<b>78</b>	<b>1,236</b>
	County Totals	CPS	166	151	202	218	190	227	214	242	261	261	292	206	184	2,814
		CWS	62	64	74	86	67	91	85	89	89	75	81	89	71	1,023
		<b>Total</b>	<b>228</b>	<b>215</b>	<b>276</b>	<b>304</b>	<b>257</b>	<b>318</b>	<b>299</b>	<b>331</b>	<b>350</b>	<b>336</b>	<b>373</b>	<b>295</b>	<b>255</b>	<b>3,837</b>
WARREN	Warren	CPS	71	71	81	87	58	55	72	64	60	68	74	67	49	877
		CWS	18	23	20	20	23	23	21	23	17	31	32	21	13	285
		<b>Total</b>	<b>89</b>	<b>94</b>	<b>101</b>	<b>107</b>	<b>81</b>	<b>78</b>	<b>93</b>	<b>87</b>	<b>77</b>	<b>99</b>	<b>106</b>	<b>88</b>	<b>62</b>	<b>1,162</b>
	County Totals	CPS	71	71	81	87	58	55	72	64	60	68	74	67	49	877
		CWS	18	23	20	20	23	23	21	23	17	31	32	21	13	285
<b>Total</b>		<b>89</b>	<b>94</b>	<b>101</b>	<b>107</b>	<b>81</b>	<b>78</b>	<b>93</b>	<b>87</b>	<b>77</b>	<b>99</b>	<b>106</b>	<b>88</b>	<b>62</b>	<b>1,162</b>	
<b>County CPS Referral Total</b>		<b>CPS</b>	<b>3,842</b>	<b>3,714</b>	<b>4,477</b>	<b>4,797</b>	<b>4,098</b>	<b>4,252</b>	<b>4,378</b>	<b>4,657</b>	<b>4,632</b>	<b>4,714</b>	<b>4,882</b>	<b>4,237</b>	<b>3,453</b>	<b>56,133</b>
<b>County CWS Referral Total</b>		<b>CWS</b>	<b>1,223</b>	<b>1,220</b>	<b>1,446</b>	<b>1,572</b>	<b>1,430</b>	<b>1,492</b>	<b>1,526</b>	<b>1,573</b>	<b>1,618</b>	<b>1,494</b>	<b>1,573</b>	<b>1,411</b>	<b>1,146</b>	<b>18,724</b>
<b>County Referral Total</b>		<b>Total</b>	<b>5,065</b>	<b>4,934</b>	<b>5,923</b>	<b>6,369</b>	<b>5,528</b>	<b>5,744</b>	<b>5,904</b>	<b>6,230</b>	<b>6,250</b>	<b>6,208</b>	<b>6,455</b>	<b>5,648</b>	<b>4,599</b>	<b>74,857</b>
Central Region IAIU	CPS	63	41	53	52	56	62	44	53	46	59	55	53	33	670	
	CWS	0	0	0	0	0	0	0	0	0	0	0	0	0	0	
	<b>Total</b>	<b>63</b>	<b>41</b>	<b>53</b>	<b>52</b>	<b>56</b>	<b>62</b>	<b>44</b>	<b>53</b>	<b>46</b>	<b>59</b>	<b>55</b>	<b>53</b>	<b>33</b>	<b>670</b>	
Metro Region IAIU	CPS	24	30	36	50	48	46	43	60	64	60	68	61	36	626	
	CWS	0	0	0	0	0	0	0	0	0	0	0	0	0	0	
	<b>Total</b>	<b>24</b>	<b>30</b>	<b>36</b>	<b>50</b>	<b>48</b>	<b>46</b>	<b>43</b>	<b>60</b>	<b>64</b>	<b>60</b>	<b>68</b>	<b>61</b>	<b>36</b>	<b>626</b>	
Northern Region IAIU	CPS	56	43	45	66	58	44	58	58	66	71	70	66	27	728	
	CWS	0	0	0	0	0	0	0	0	0	0	0	0	0	0	
	<b>Total</b>	<b>56</b>	<b>43</b>	<b>45</b>	<b>66</b>	<b>58</b>	<b>44</b>	<b>58</b>	<b>58</b>	<b>66</b>	<b>71</b>	<b>70</b>	<b>66</b>	<b>27</b>	<b>728</b>	
Southern Region IAIU	CPS	61	59	60	83	72	61	79	64	76	90	73	92	44	914	
	CWS	0	0	0	0	0	0	0	0	0	0	0	0	0	0	
	<b>Total</b>	<b>61</b>	<b>59</b>	<b>60</b>	<b>83</b>	<b>72</b>	<b>61</b>	<b>79</b>	<b>64</b>	<b>76</b>	<b>90</b>	<b>73</b>	<b>92</b>	<b>44</b>	<b>914</b>	
<b>IAIU CPS Subtotal</b>		<b>CPS</b>	<b>204</b>	<b>173</b>	<b>194</b>	<b>251</b>	<b>234</b>	<b>213</b>	<b>224</b>	<b>235</b>	<b>252</b>	<b>280</b>	<b>266</b>	<b>272</b>	<b>140</b>	<b>2,938</b>
<b>IAIU CWS Subtotal</b>		<b>CWS</b>	<b>0</b>	<b>0</b>	<b>0</b>	<b>0</b>	<b>0</b>	<b>0</b>	<b>0</b>	<b>0</b>	<b>0</b>	<b>0</b>	<b>0</b>	<b>0</b>	<b>0</b>	<b>0</b>
<b>IAIU Subtotal</b>		<b>Total</b>	<b>204</b>	<b>173</b>	<b>194</b>	<b>251</b>	<b>234</b>	<b>213</b>	<b>224</b>	<b>235</b>	<b>252</b>	<b>280</b>	<b>266</b>	<b>272</b>	<b>140</b>	<b>2,938</b>
<b>County and IAIU CPS Subtotal</b>		<b>CPS</b>	<b>4,046</b>	<b>3,887</b>	<b>4,671</b>	<b>5,048</b>	<b>4,332</b>	<b>4,465</b>	<b>4,602</b>	<b>4,892</b>	<b>4,884</b>	<b>4,994</b>	<b>5,148</b>	<b>4,509</b>	<b>3,593</b>	<b>59,071</b>
<b>County and IAIU CWS Subtotal</b>		<b>CWS</b>	<b>1,223</b>	<b>1,220</b>	<b>1,446</b>	<b>1,573</b>	<b>1,430</b>	<b>1,492</b>	<b>1,526</b>	<b>1,573</b>	<b>1,618</b>	<b>1,494</b>	<b>1,573</b>	<b>1,411</b>	<b>1,146</b>	<b>18,725</b>
<b>Unable to Determine<sup>(1)</sup></b>		<b>Total</b>	<b>142</b>	<b>124</b>	<b>153</b>	<b>136</b>	<b>131</b>	<b>114</b>	<b>128</b>	<b>126</b>	<b>165</b>	<b>115</b>	<b>149</b>	<b>140</b>	<b>110</b>	<b>1,733</b>
<b>Other Offices</b>		<b>Total</b>	<b>2</b>	<b>3</b>	<b>1</b>	<b>1</b>	<b>1</b>	<b>3</b>	<b>1</b>	<b>5</b>	<b>2</b>	<b>4</b>	<b>1</b>	<b>3</b>	<b>1</b>	<b>28</b>
<b>Grand Total</b>		<b>Total</b>	<b>5,413</b>	<b>5,234</b>	<b>6,271</b>	<b>6,758</b>	<b>5,894</b>	<b>6,074</b>	<b>6,257</b>	<b>6,596</b>	<b>6,669</b>	<b>6,607</b>	<b>6,871</b>	<b>6,063</b>	<b>4,850</b>	<b>79,557</b>

<sup>(1)</sup>CPS Reports or CWS Referrals not assigned to an office through the Assignment Designee, but were assigned to an office for an assessment or investigation.