



Child Protection and Permanency

Monthly Screening and Investigation Report July 2019

Christine Norbut Beyer, MSW
Commissioner



Table of Contents

Table 1: NJ State Central Registry Activity: Monthly Child Abuse and Neglect Hotline Calls, Intakes and Assignments to Child Protection & Permanency (CP&P) Offices

Chart 1: CP&P Annual Trends in Child Protection Services (CPS) Reports and Child Welfare Services (CWS) Referrals

Table 2: Assignments to CP&P Offices: CPS Reports and CWS Referrals

Table 3: Source of CPS Reports and CWS Referrals

Table 4: Monthly Count of CPS Reports and CWS Referrals Assigned to Counties

Table 5: Monthly Count of CPS Reports and CWS Referrals Assigned to CP&P Local Offices

Table 1: NJ State Central Registry Activity: Monthly Child Abuse and Neglect Hotline Calls, Intakes and Assignments to CP&P Offices^{1,2,7}

2018 - 2019	Hotline Call Activity				Intakes Recorded in NJ SPIRIT ^{6,8}												Assignments to CP&P Offices				
	Total Calls to SCR ³	Abandon Calls ⁴	Average Time to Answer (seconds)	Resulting NJS Intakes ⁵	CPS Reports		CWS Referrals		No Action Required (NAR)		Related Information (RI)		Information & Referral (I&R)		Information Only (IO)		CPS Reports		CWS Referrals		Total
					n	%	n	%	n	%	n	%	n	%	n	%	n	%	n	%	
July 2018	11,406	407	35	12,497	4,011	32.1%	1,307	10.5%	214	1.7%	3,387	27.1%	1,374	11.0%	2,204	17.6%	4,011	75.4%	1,308	24.6%	5,319
August 2018	11,633	460	43	12,708	4,102	32.3%	1,409	11.1%	252	2.0%	3,455	27.2%	1,307	10.3%	2,183	17.2%	4,102	74.4%	1,408	25.6%	5,510
September 2018	13,554	925	64	14,277	4,748	33.3%	1,632	11.4%	217	1.5%	3,914	27.4%	1,448	10.1%	2,318	16.2%	4,748	74.4%	1,634	25.6%	6,382
October 2018	15,489	904	68	16,470	5,790	35.2%	2,008	12.2%	260	1.6%	4,103	24.9%	1,827	11.1%	2,482	15.1%	5,790	74.2%	2,011	25.8%	7,801
November 2018	13,533	1,111	80	14,067	4,973	35.4%	1,621	11.5%	210	1.5%	3,749	26.7%	1,453	10.3%	2,061	14.7%	4,973	75.4%	1,620	24.6%	6,593
December 2018	13,020	971	78	13,683	4,891	35.7%	1,524	11.1%	174	1.3%	3,518	25.7%	1,446	10.6%	2,130	15.6%	4,891	76.2%	1,527	23.8%	6,418
January 2019	14,566	1,097	91	15,153	5,443	35.9%	1,858	12.3%	224	1.5%	3,764	24.8%	1,673	11.0%	2,191	14.5%	5,443	74.6%	1,858	25.4%	7,301
February 2019	12,995	1,095	102	13,518	4,811	35.6%	1,626	12.0%	213	1.6%	3,476	25.7%	1,506	11.1%	1,886	14.0%	4,811	74.7%	1,628	25.3%	6,439
March 2019	14,637	1,422	112	15,528	5,677	36.6%	1,826	11.8%	212	1.4%	3,825	24.6%	1,762	11.3%	2,226	14.3%	5,677	75.7%	1,824	24.3%	7,501
April 2019	14,252	1,404	113	14,540	5,313	36.5%	1,630	11.2%	253	1.7%	3,500	24.1%	1,721	11.8%	2,123	14.6%	5,313	76.5%	1,630	23.5%	6,943
May 2019	15,705	1,615	120	15,810	5,853	37.0%	1,780	11.3%	229	1.4%	3,784	23.9%	1,852	11.7%	2,312	14.6%	5,853	76.7%	1,781	23.3%	7,634
June 2019	13,596	1,287	107	14,057	4,872	33.0%	1,507	10.7%	268	1.9%	3,537	25.2%	1,703	12.1%	2,168	15.4%	4,874	76.4%	1,509	23.6%	6,383
July 2019	12,135	874	73	12,821	4,277	33.4%	1,309	10.2%	267	2.1%	3,250	25.3%	1,452	11.3%	2,266	17.7%	4,277	76.6%	1,309	23.4%	5,586
	13,579	1,044	84	14,241	4,982	35.0%	1,618	11.4%	230	1.6%	3,636	25.5%	1,579	11.1%	2,196	15.4%	4,982	75.5%	1,619	24.5%	6,601
Overall Total	176,521	13,572		185,129	64,761		21,037		2,993		47,262		20,524		28,550		64,763	75.5%	21,047	24.5%	85,810

¹Comes from three distinct sources: (1) the Automatic Call Distribution (ACD) phone system; which keeps a count of the number of calls and call routing; (2) Monthly NJSpirit Intakes; which record decision making on calls received by hotline screeners, and (3) NJSpirit extracts of assigned CWS Referrals and CPS Reports.

²The number of Intakes, CPS Reports, and CWS Referrals are based on an extract from NJSpirit. Data extracted by the Office of Research, Evaluation, and Reporting on **August 8, 2019** includes all Intakes, CPS Reports, and CWS Referrals received from **July 1, 2019 through July 31, 2019**.

³The number calls received through the ACD System that were directed to a screener from any call-in phone number.

⁴The number of calls received through the ACD System that are abandoned either while waiting in queue or while ringing.

⁵The number of Intakes entered in NJSpirit from the number of calls received.

⁶The number of Intakes recorded in NJSpirit, by type of Intake. There is not a one-to-one relationship between an ACD call and an Intake; multiple calls to State Central Registry (SCR) may result in a single Intake, or one call may result in multiple Intakes.

⁷Intake: The process of documenting: a report of alleged abuse or neglect of a child (CPS); a request for services on behalf of a child, or a referral of a child for services (CWS); a call in which the caller provides additional or clarifying information about a current service case or active investigation (RI); informing a caller of, or referring a caller to, services available from other private or public sources (I&R); a call that requires no action by CP&P (NAR); or a response to a simple inquiry (IO).

CP&P Annual Trends in CPS Reports and CWS Referrals

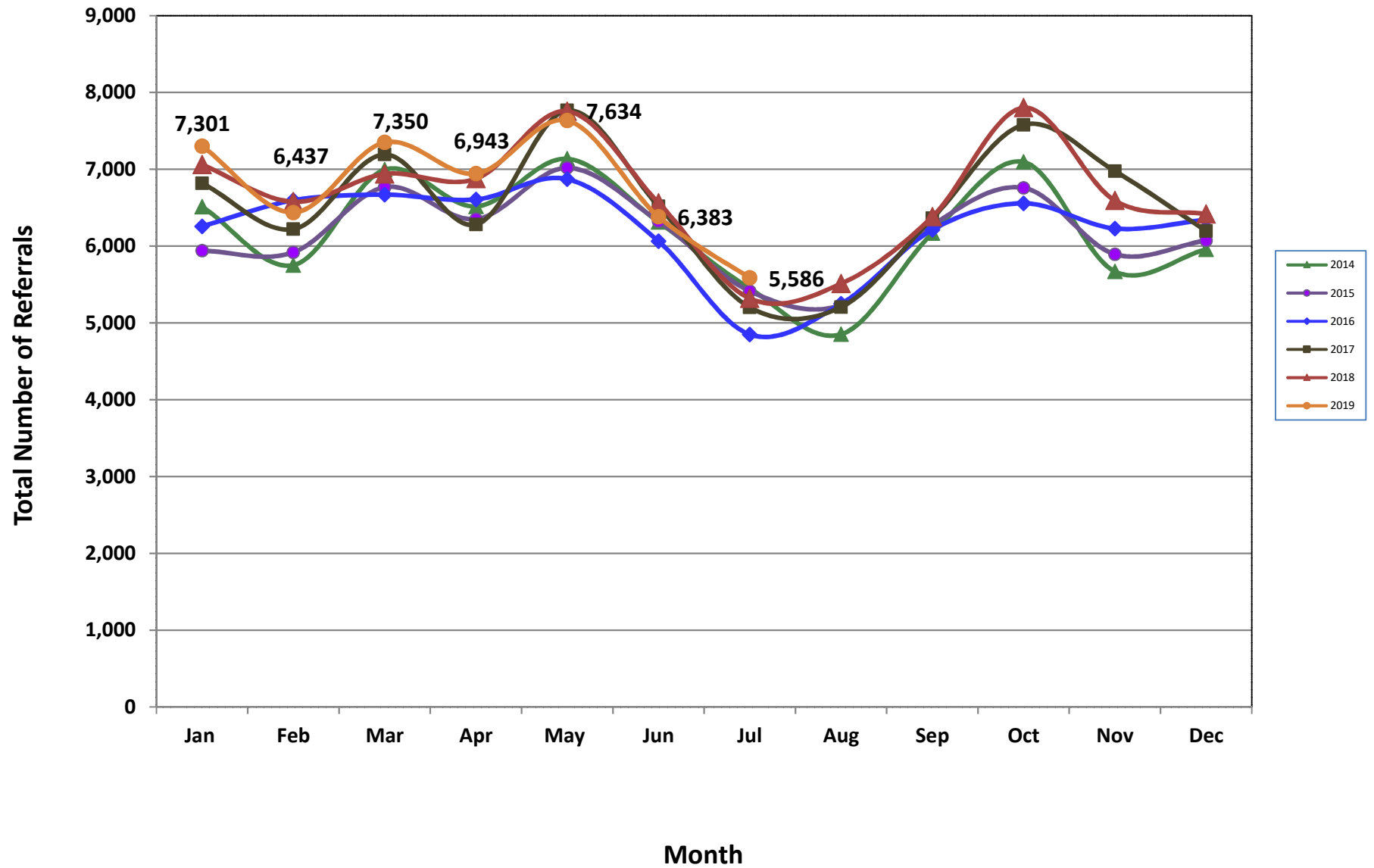


Table 2: Assignments to CP&P Offices: CPS Reports and CWS Referrals¹

Intake Date ³		CPS Reports ²	CWS Referrals ²	Total Assignments ²
2014	Jan 2014	5,097	1,416	6,513
	Feb 2014	4,457	1,295	5,752
	Mar 2014	5,408	1,586	6,994
	Apr 2014	5,049	1,467	6,516
	May 2014	5,501	1,635	7,136
	Jun 2014	4,796	1,517	6,313
	Jul 2014	4,202	1,247	5,449
	Aug 2014	3,629	1,222	4,851
	Sep 2014	4,668	1,498	6,166
	Oct 2014	5,509	1,586	7,095
	Nov 2014	4,254	1,416	5,670
	Dec 2014	4,509	1,447	5,956
	Total	57,079	17,332	74,411
2015	Jan 2015	4,549	1,391	5,940
	Feb 2015	4,574	1,345	5,919
	Mar 2015	5,187	1,580	6,767
	Apr 2015	4,967	1,384	6,351
	May 2015	5,457	1,561	7,018
	Jun 2015	4,887	1,436	6,323
	Jul 2015	4,140	1,273	5,413
	Aug 2015	3,978	1,256	5,234
	Sep 2015	4,776	1,495	6,271
	Oct 2015	5,139	1,619	6,758
	Nov 2015	4,417	1,477	5,894
	Dec 2015	4,530	1,544	6,074
	Total	56,601	17,361	73,962
2016	Jan 2016	4,686	1,571	6,257
	Feb 2016	4,974	1,622	6,596
	Mar 2016	5,000	1,669	6,669
	Apr 2016	5,065	1,542	6,607
	May 2016	5,238	1,633	6,871
	Jun 2016	4,602	1,461	6,063
	Jul 2016	3,663	1,187	4,850
	Aug 2016	3,941	1,307	5,248
	Sep 2016	4,654	1,559	6,213
	Oct 2016	4,935	1,622	6,557
	Nov 2016	4,677	1,552	6,229
	Dec 2016	4,762	1,580	6,342
	Total	56,197	18,305	74,502

Table 2: Assignments to CP&P Offices: CPS Reports and CWS Referrals¹

Intake Date ³		CPS Reports ²	CWS Referrals ²	Total Assignments ²
2017	Jan 2017	5,111	1,708	6,819
	Feb 2017	4,716	1,504	6,220
	Mar 2017	5,349	1,843	7,192
	Apr 2017	4,790	1,490	6,280
	May 2017	5,847	1,919	7,766
	Jun 2017	4,853	1,665	6,518
	Jul 2017	3,814	1,389	5,203
	Aug 2017	3,866	1,340	5,206
	Sep 2017	4,719	1,643	6,362
	Oct 2017	5,613	1,966	7,579
	Nov 2017	5,223	1,753	6,976
	Dec 2017	4,601	1,594	6,195
	Total	58,502	19,814	78,316
2018	Jan 2018	5,276	1,784	7,060
	Feb 2018	4,933	1,644	6,577
	Mar 2018	5,212	1,727	6,939
	Apr 2018	5,275	1,601	6,876
	May 2018	5,920	1,836	7,756
	Jun 2018	4,948	1,615	6,563
	Jul 2018	4,011	1,308	5,319
	Aug 2018	4,102	1,408	5,510
	Sep 2018	4,748	1,634	6,382
	Oct 2018	5,790	2,011	7,801
	Nov 2018	4,973	1,620	6,593
	Dec 2018	4,891	1,527	6,418
	Total	60,079	19,715	79,794
2019	Jan 2019	5,443	1,858	7,301
	Feb 2019	4,811	1,628	6,439
	Mar 2019	5,677	1,824	7,501
	Apr 2019	5,313	1,630	6,943
	May 2019	5,853	1,781	7,634
	June 2019	4,874	1,509	6,383
	July 2019	4,277	1,309	5,586
	Total	27,097	8,721	35,818
Grand Total		315,555	101,248	416,803

¹Source of Data: NJ SPIRIT

²A CPS Report or a CWS Referral may include multiple children in a family, with one or more allegation or request for services. In these cases, each CPS Report or CWS Referral is counted once - the CPS Report or the CWS Referral is the unit of analysis rather than the child.

³Prior to January 2014, the number of CPS Reports and CWS Referrals was based on the type of assignment of the CPS Report or CWS Referral. Beginning in January 2014, the number of CPS Reports and CWS Referrals is based on the number of CPS Reports and CWS Referrals received.

Table 3: Source of CPS Reports and CWS Referrals

CPS Reports and CWS Referrals	Source	Jul 2018	Aug 2018	Sep 2018	Oct 2018	Nov 2018	Dec 2018	Jan 2019	Feb 2019	Mar 2019	Apr 2019	May 2019	June 2019	July 2019		13 Month Total	
	School Staff	184	118	1,237	2,256	1,769	1,643	2,151	1,887	2,388	1,732	2,167	1,163	211	4%	18,906	22%
	Healthcare Provider	904	920	928	1,018	954	891	999	858	977	955	1,033	970	964	17%	12,371	14%
	Law Enforcement	1,238	1,201	1,251	1,188	1,186	1,186	1,131	1,156	1,290	1,329	1,409	1,437	1,416	25%	16,418	19%
	Government Agency	436	468	428	521	430	387	417	345	374	392	477	387	448	8%	5,510	6%
	Parent	573	590	569	563	491	481	512	419	513	509	525	492	549	10%	6,786	8%
	Relative/Friend/Neighbor	475	488	475	452	370	393	447	359	399	456	400	418	482	9%	5,614	7%
	Anonymous	538	573	565	769	576	609	656	586	686	641	715	629	493	9%	8,036	9%
	CP&P	115	142	106	131	99	109	125	118	130	107	102	104	126	2%	1,514	2%
	Court/Legal	143	193	141	171	101	132	190	155	162	182	176	158	189	3%	2,093	2%
	Community Group/Individual	290	317	301	301	264	234	274	234	253	257	257	242	279	5%	3,503	4%
	Facility Staff (incl Correctional Facility)	101	135	103	97	86	79	88	57	85	88	81	76	88	2%	1,164	1%
	Child (Self)	38	53	35	51	30	35	23	29	25	32	37	37	50	1%	475	1%
	Other	267	289	228	262	218	226	270	219	204	245	244	248	277	5%	3,197	4%
Daycare/Babysitter	17	23	15	21	19	13	18	17	15	18	11	22	14	0%	223	0%	
Total	5,319	5,510	6,382	7,801	6,593	6,418	7,301	6,439	7,501	7,501	7,634	6,383	5,586		85,810		

Table 4: Monthly Count of CPS Reports and CWS Referrals Assigned to Counties

County														Average Number of Assignments Last 13 Months	Jun 19 to Jul 19 Numerical Difference
	Jul 2018	Aug 2018	Sep 2018	Oct 2018	Nov 2018	Dec 2018	Jan 2019	Feb 2019	Mar 2019	Apr 2019	May 2019	June 2019	July 2019		
Atlantic	213	231	295	280	264	243	285	274	296	273	318	279	235	268	116%
Bergen	291	243	333	467	412	377	460	369	460	439	486	376	273	384	-103
Burlington	284	246	270	348	313	318	338	361	337	330	351	288	262	311	-26
Camden	472	485	543	606	515	469	577	485	619	559	588	484	442	526	-42
Cape May	80	85	109	87	73	68	103	83	74	88	70	82	96	84	14
Cumberland	159	205	225	232	204	200	218	191	235	202	219	214	187	207	-27
Essex	545	622	666	859	712	694	798	723	795	740	851	693	604	716	-89
Gloucester	200	229	215	260	235	233	302	250	272	296	341	265	250	258	-15
Hudson	330	342	426	540	420	425	475	410	518	457	510	422	346	432	-76
Hunterdon	48	49	57	75	58	59	48	52	71	50	67	64	42	57	-22
Mercer	223	247	231	365	298	283	298	301	331	295	292	298	264	287	-34
Middlesex	358	366	433	563	426	472	527	476	505	449	505	412	337	448	-75
Monmouth	302	277	410	426	380	352	433	333	424	359	424	376	295	369	-81
Morris	204	186	215	292	224	242	264	215	244	241	303	200	181	232	-19
Ocean	357	371	386	482	450	408	428	382	440	460	459	386	385	415	-1
Passaic	307	383	421	567	461	438	482	394	527	485	535	431	356	445	-75
Salem	65	77	104	90	72	70	97	71	75	91	77	57	83	79	26
Somerset	141	128	155	200	181	165	160	158	196	158	167	155	155	163	0
Sussex	82	82	99	120	81	97	100	122	116	94	114	104	83	100	-21
Union	260	221	328	396	351	343	401	359	405	353	398	317	276	339	-41
Warren	87	105	118	105	93	104	89	73	118	131	104	102	82	101	-20
County Subtotals	5,008	5,180	6,039	7,360	6,223	6,060	6,883	6,082	7,058	6,550	7,179	6,005	5,234	6,220	-771
Central Region IAIU	40	57	39	67	63	47	61	47	61	66	82	57	58	57	1
Metro Region IAIU	40	38	50	65	61	51	55	47	62	45	64	41	36	50	-5
Northern Region IAIU	42	34	63	71	70	64	58	74	83	57	89	64	53	63	-11
Southern Region IAIU	61	76	67	100	58	71	92	70	85	90	90	69	66	77	-3
IAIU Subtotals	183	205	219	303	252	233	266	238	291	258	325	231	213	247	-18
Unable to Determine¹	128	122	123	135	117	121	149	119	151	132	127	147	138	131	-9
Other Offices	0	3	1	3	1	4	3	0	1	3	3	0	1	2	1
Grand Total	5,319	5,510	6,382	7,801	6,593	6,418	7,301	6,439	7,501	6,943	7,634	6,383	5,586	6,601	-797

¹CPS Reports or CWS Referrals not assigned to an office through the Assignment Designee, but were assigned to an office for an assessment or investigation.

Table 5: Monthly Count of CPS Reports and CWS Referrals Assigned to CP&P Local Offices

County	Local Office	Type of Referral														Total
			Jul 2018	Aug 2018	Sep 2018	Oct 2018	Nov 2018	Dec 2018	Jan 2019	Feb 2019	Mar 2019	Apr 2019	May 2019	June 2019	July 2019	
ATLANTIC	Atlantic East	CPS	97	106	132	132	139	107	140	128	148	123	150	126	110	1,638
		CWS	31	46	43	50	40	43	32	33	42	36	41	34	34	505
		Total	128	152	175	182	179	150	172	161	190	159	191	160	144	2,143
	Atlantic West	CPS	68	60	89	80	73	72	86	84	81	88	111	86	69	1,047
		CWS	17	19	31	18	12	21	27	29	25	26	16	33	22	296
		Total	85	79	120	98	85	93	113	113	106	114	127	119	91	1,343
	County Totals	CPS	165	166	221	212	212	179	226	212	229	211	261	212	179	2,685
		CWS	48	65	74	68	52	64	59	62	67	62	57	67	56	801
		Total	213	231	295	280	264	243	285	274	296	273	318	279	235	3,486
BERGEN	Bergen Central	CPS	76	59	88	147	103	119	137	98	129	134	160	122	91	1,463
		CWS	32	25	44	60	51	39	67	56	45	55	64	36	23	597
		Total	108	84	132	207	154	158	204	154	174	189	224	158	114	2,060
	Bergen South	CPS	136	112	152	187	188	155	173	139	207	173	184	155	121	2,082
		CWS	47	47	49	73	70	64	83	76	79	77	78	63	38	844
		Total	183	159	201	260	258	219	256	215	286	250	262	218	159	2,926
	County Totals	CPS	212	171	240	334	291	274	310	237	336	307	344	277	212	3,545
		CWS	79	72	93	133	121	103	150	132	124	132	142	99	61	1,441
		Total	291	243	333	467	412	377	460	369	460	439	486	376	273	4,986
BURLINGTON	Burlington East	CPS	117	93	93	131	124	128	132	150	128	142	119	117	127	1,601
		CWS	37	33	31	53	38	38	41	41	43	46	45	34	21	501
		Total	154	126	124	184	162	166	173	191	171	188	164	151	148	2,102
	Burlington West	CPS	100	83	113	124	121	123	123	133	122	109	137	96	85	1,469
		CWS	30	37	33	40	30	29	42	37	44	33	50	41	29	475
		Total	130	120	146	164	151	152	165	170	166	142	187	137	114	1,944
	County Totals	CPS	217	176	206	255	245	251	255	283	250	251	256	213	212	3,070
		CWS	67	70	64	93	68	67	83	78	87	79	95	75	50	976
		Total	284	246	270	348	313	318	338	361	337	330	351	288	262	4,046
CAMDEN	Camden Central	CPS	113	109	103	116	110	104	137	98	146	118	104	112	87	1,457
		CWS	27	27	36	41	27	27	31	34	34	33	33	27	16	393
		Total	140	136	139	157	137	131	168	132	180	151	137	139	103	1,850
	Camden East	CPS	99	99	106	110	103	81	95	83	123	107	122	91	83	1,302
		CWS	32	36	44	39	29	26	35	21	38	31	34	27	36	428
		Total	131	135	150	149	132	107	130	104	161	138	156	118	119	1,730
	Camden North	CPS	80	74	91	119	94	96	110	111	110	121	117	93	77	1,293
		CWS	26	33	34	42	31	19	36	42	43	30	34	26	32	428
		Total	106	107	125	161	125	115	146	153	153	151	151	119	109	1,721
	Camden South	CPS	72	85	98	108	89	91	103	73	97	95	118	77	83	1,189
		CWS	23	22	31	31	32	25	30	23	28	24	26	31	28	354
		Total	95	107	129	139	121	116	133	96	125	119	144	108	111	1,543
	County Totals	CPS	364	367	398	453	396	372	445	365	476	441	461	373	330	5,241
		CWS	108	118	145	153	119	97	132	120	143	118	127	111	112	1,603
		Total	472	485	543	606	515	469	577	485	619	559	588	484	442	6,844
CAPE MAY	Cape May	CPS	60	73	89	64	56	60	79	63	58	75	57	63	72	869
		CWS	20	12	20	23	17	8	24	20	16	13	13	19	24	229
		Total	80	85	109	87	73	68	103	83	74	88	70	82	96	1,098
	County Totals	CPS	60	73	89	64	56	60	79	63	58	75	57	63	72	869
		Total	80	85	109	87	73	68	103	83	74	88	70	82	96	1,098
CUMBERLAND	Cumberland East	CPS	47	44	60	55	47	45	43	54	68	58	49	50	45	665
		CWS	15	13	15	18	15	13	17	9	13	12	25	24	12	201
		Total	62	57	75	73	62	58	60	63	81	70	74	74	57	866
	Cumberland West	CPS	82	118	118	116	106	116	119	100	124	103	116	118	101	1,437
		CWS	15	30	32	43	36	26	39	28	30	29	29	22	29	388
		Total	97	148	150	159	142	142	158	128	154	132	145	140	130	1,825
	County Totals	CPS	129	162	178	171	153	161	162	154	192	161	165	168	146	2,102
		CWS	30	43	47	61	51	39	56	37	43	41	54	46	41	589
Total		159	205	225	232	204	200	218	191	235	202	219	214	187	2,691	

Table 5: Monthly Count of CPS Reports and CWS Referrals Assigned to CP&P Local Offices

County	Local Office	Type of Referral														Total
			Jul 2018	Aug 2018	Sep 2018	Oct 2018	Nov 2018	Dec 2018	Jan 2019	Feb 2019	Mar 2019	Apr 2019	May 2019	June 2019	July 2019	
ESSEX	Essex Central	CPS	70	92	68	97	103	90	107	97	107	89	102	93	94	1,209
		CWS	21	23	41	35	35	26	37	33	42	26	34	36	36	425
		Total	91	115	109	132	138	116	144	130	149	115	136	129	130	1,634
	Essex North	CPS	41	61	65	82	74	65	72	76	73	76	85	62	53	885
		CWS	18	15	28	31	25	20	32	25	24	21	29	32	17	317
		Total	59	76	93	113	99	85	104	101	97	97	114	94	70	1,202
	Essex South	CPS	46	76	63	80	70	77	86	76	94	90	94	71	48	971
		CWS	27	17	28	44	24	20	27	46	35	39	32	23	15	377
		Total	73	93	91	124	94	97	113	122	129	129	126	94	63	1348
	Newark Center City	CPS	75	81	102	123	91	98	103	96	89	96	128	85	86	1253
		CWS	26	26	27	44	36	25	38	32	33	31	34	31	27	410
		Total	101	107	129	167	127	123	141	128	122	127	162	116	113	1663
	Newark Northeast	CPS	71	84	76	117	105	101	111	83	112	104	118	89	84	1255
		CWS	24	35	29	58	30	24	28	26	35	38	29	25	29	410
		Total	95	119	105	175	135	125	139	109	147	142	147	114	113	1665
	Newark South	CPS	95	76	93	111	92	102	118	103	116	98	121	118	85	1328
		CWS	31	36	46	37	27	46	39	30	35	32	45	28	30	462
Total		126	112	139	148	119	148	157	133	151	130	166	146	115	1790	
County Totals	CPS	398	470	467	610	535	533	597	531	591	553	648	518	450	6901	
	CWS	147	152	199	249	177	161	201	192	204	187	203	175	154	2401	
	Total	545	622	666	859	712	694	798	723	795	740	851	693	604	9302	
GLOUCESTER	Gloucester East	CPS	75	76	86	104	85	70	108	88	104	101	134	114	80	1225
		CWS	20	31	22	41	25	30	29	28	29	42	33	23	26	379
		Total	95	107	108	145	110	100	137	116	133	143	167	137	106	1604
	Gloucester West	CPS	82	101	79	92	95	105	130	101	112	129	139	105	115	1385
		CWS	23	21	28	23	30	28	35	33	27	24	35	23	29	359
		Total	105	122	107	115	125	133	165	134	139	153	174	128	144	1744
	County Totals	CPS	157	177	165	196	180	175	238	189	216	230	273	219	195	2610
		CWS	43	52	50	64	55	58	64	61	56	66	68	46	55	738
		Total	200	229	215	260	235	233	302	250	272	296	341	265	250	3348
HUDSON	Hudson Central	CPS	83	89	93	141	91	117	107	104	129	113	116	101	102	1386
		CWS	38	39	43	43	37	41	47	37	46	35	20	19	32	477
		Total	121	128	136	184	128	158	154	141	175	148	136	120	134	1863
	Hudson North	CPS	34	51	71	92	62	72	87	67	81	77	95	65	57	911
		CWS	19	14	26	33	28	27	40	28	28	30	33	26	21	353
		Total	53	65	97	125	90	99	127	95	109	107	128	91	78	1264
	Hudson South	CPS	38	43	41	60	48	48	55	47	66	52	63	51	37	649
		CWS	16	17	34	23	35	22	15	22	25	21	44	36	14	324
		Total	54	60	75	83	83	70	70	69	91	73	107	87	51	973
	Hudson West	CPS	72	59	84	94	87	72	87	69	93	97	105	102	58	1079
		CWS	30	30	34	54	32	26	37	36	50	32	34	22	25	442
		Total	102	89	118	148	119	98	124	105	143	129	139	124	83	1521
	County Totals	CPS	227	242	289	387	288	309	336	287	369	339	379	319	254	4025
		CWS	103	100	137	153	132	116	139	123	149	118	131	103	92	1596
		Total	330	342	426	540	420	425	475	410	518	457	510	422	346	5621
HUNTERDON	Hunterdon	CPS	37	40	40	56	44	47	33	33	52	42	53	47	31	555
		CWS	11	9	17	19	14	12	15	19	19	8	14	17	11	185
		Total	48	49	57	75	58	59	48	52	71	50	67	64	42	740
	County Totals	CPS	37	40	40	56	44	47	33	33	52	42	53	47	31	555
		CWS	11	9	17	19	14	12	15	19	19	8	14	17	11	185
Total	48	49	57	75	58	59	48	52	71	50	67	64	42	740		
MERCER	Mercer North	CPS	81	107	84	139	113	110	117	114	125	110	114	95	81	1390
		CWS	31	28	25	57	50	31	39	43	41	44	45	45	525	
		Total	112	135	109	196	163	141	156	157	166	154	159	141	126	1915
	Mercer South	CPS	86	78	89	125	95	109	101	104	125	107	97	122	112	1350
		CWS	25	34	33	44	40	33	41	40	40	34	36	35	26	461
		Total	111	112	122	169	135	142	142	144	165	141	133	157	138	1811
	County Totals	CPS	167	185	173	264	208	219	218	218	250	217	211	217	193	2740
CWS		56	62	58	101	90	64	80	83	81	78	81	81	71	986	
Total		223	247	231	365	298	283	298	301	331	295	292	298	264	3726	



Table 5: Monthly Count of CPS Reports and CWS Referrals Assigned to CP&P Local Offices

County	Local Office	Type of Referral														Total
			Jul 2018	Aug 2018	Sep 2018	Oct 2018	Nov 2018	Dec 2018	Jan 2019	Feb 2019	Mar 2019	Apr 2019	May 2019	June 2019	July 2019	
MIDDLESEX	Middlesex Central	CPS	78	62	75	116	93	102	125	113	126	91	110	85	83	1259
		CWS	32	28	30	31	28	33	33	38	25	36	37	23	25	399
		Total	110	90	105	147	121	135	158	151	151	127	147	108	108	1658
	Middlesex Coastal	CPS	111	100	120	161	110	120	148	130	127	133	149	113	88	1610
		CWS	24	37	39	49	39	42	49	43	46	34	39	37	26	504
		Total	135	137	159	210	149	162	197	173	173	167	188	150	114	2114
	Middlesex West	CPS	83	88	129	168	108	138	126	116	132	116	125	110	80	1519
		CWS	30	51	40	38	48	37	46	36	49	39	45	44	35	538
		Total	113	139	169	206	156	175	172	152	181	155	170	154	115	2057
	County Totals	CPS	272	250	324	445	311	360	399	359	385	340	384	308	251	4388
CWS		86	116	109	118	115	112	128	117	120	109	121	104	86	1441	
Total		358	366	433	563	426	472	527	476	505	449	505	412	337	5829	
MONMOUTH	Monmouth North	CPS	118	107	159	165	133	158	190	128	181	147	203	142	119	1950
		CWS	36	36	61	62	42	49	64	49	57	49	63	55	42	665
		Total	154	143	220	227	175	207	254	177	238	196	266	197	161	2615
	Monmouth South	CPS	112	91	149	149	151	100	145	114	138	120	118	136	110	1633
		CWS	36	43	41	50	54	45	34	42	48	43	40	43	24	543
		Total	148	134	190	199	205	145	179	156	186	163	158	179	134	2176
	County Totals	CPS	230	198	308	314	284	258	335	242	319	267	321	278	229	3583
		CWS	72	79	102	112	96	94	98	91	105	92	103	98	66	1208
Total		302	277	410	426	380	352	433	333	424	359	424	376	295	4791	
MORRIS	Morris East	CPS	79	74	75	100	84	91	84	75	74	94	107	69	63	1069
		CWS	24	20	24	42	19	37	49	22	21	21	36	16	21	352
		Total	103	94	99	142	103	128	133	97	95	115	143	85	84	1421
	Morris West	CPS	75	74	84	118	92	89	89	82	106	84	125	87	80	1185
		CWS	26	18	32	32	29	25	42	36	43	42	35	28	17	405
		Total	101	92	116	150	121	114	131	118	149	126	160	115	97	1590
	County Totals	CPS	154	148	159	218	176	180	173	157	180	178	232	156	143	2254
		CWS	50	38	56	74	48	62	91	58	64	63	71	44	38	757
Total		204	186	215	292	224	242	264	215	244	241	303	200	181	3011	
OCEAN	Ocean North	CPS	163	143	154	203	178	163	165	157	179	209	219	148	149	2230
		CWS	34	38	40	68	60	46	65	48	53	53	63	40	48	656
		Total	197	181	194	271	238	209	230	205	232	262	282	188	197	2886
	Ocean South	CPS	124	135	160	166	170	160	147	147	163	148	140	157	152	1969
		CWS	36	55	32	45	42	39	51	30	45	50	37	41	36	539
		Total	160	190	192	211	212	199	198	177	208	198	177	198	188	2508
	County Totals	CPS	287	278	314	369	348	323	312	304	342	357	359	305	301	4199
		CWS	70	93	72	113	102	85	116	78	98	103	100	81	84	1195
Total		357	371	386	482	450	408	428	382	440	460	459	386	385	5394	
PASSAIC	Passaic Central	CPS	108	128	164	207	177	157	192	160	181	195	198	157	132	2156
		CWS	43	51	55	93	66	68	66	59	94	71	79	55	35	835
		Total	151	179	219	300	243	225	258	219	275	266	277	212	167	2991
	Passaic North	CPS	104	147	128	189	158	146	148	124	181	172	188	160	139	1984
		CWS	52	57	74	78	60	67	76	51	71	47	70	59	50	812
		Total	156	204	202	267	218	213	224	175	252	219	258	219	189	2796
	County Totals	CPS	212	275	292	396	335	303	340	284	362	367	386	317	271	4140
		CWS	95	108	129	171	126	135	142	110	165	118	149	114	85	1647
Total		307	383	421	567	461	438	482	394	527	485	535	431	356	5787	
SALEM	Salem	CPS	52	56	73	68	53	53	77	50	64	71	63	40	63	783
		CWS	13	21	31	22	19	17	20	21	11	20	14	17	20	246
		Total	65	77	104	90	72	70	97	71	75	91	77	57	83	1029
	County Totals	CPS	52	56	73	68	53	53	77	50	64	71	63	40	63	783
		CWS	13	21	31	22	19	17	20	21	11	20	14	17	20	246
Total	65	77	104	90	72	70	97	71	75	91	77	57	83	1029		
SOMERSET	Somerset	CPS	106	93	125	153	137	128	122	122	161	116	128	121	117	1629
		CWS	35	35	30	47	44	37	38	36	35	42	39	34	38	490
		Total	141	128	155	200	181	165	160	158	196	158	167	155	155	2119
	County Totals	CPS	106	93	125	153	137	128	122	122	161	116	128	121	117	1629
		CWS	35	35	30	47	44	37	38	36	35	42	39	34	38	490
Total	141	128	155	200	181	165	160	158	196	158	167	155	155	2119		

Data in this report is preliminary and may differ from any final report. This report is produced to ensure continuous quality improvement throughout DCF.

Table 5: Monthly Count of CPS Reports and CWS Referrals Assigned to CP&P Local Offices

County	Local Office	Type of Referral														Total
			Jul 2018	Aug 2018	Sep 2018	Oct 2018	Nov 2018	Dec 2018	Jan 2019	Feb 2019	Mar 2019	Apr 2019	May 2019	June 2019	July 2019	
SUSSEX	Sussex	CPS	62	60	72	90	64	67	77	88	87	75	81	77	64	964
		CWS	20	22	27	30	17	30	23	34	29	19	33	27	19	330
		Total	82	82	99	120	81	97	100	122	116	94	114	104	83	1294
	County Totals	CPS	62	60	72	90	64	67	77	88	87	75	81	77	64	964
		CWS	20	22	27	30	17	30	23	34	29	19	33	27	19	330
		Total	82	82	99	120	81	97	100	122	116	94	114	104	83	1294
UNION	Union Central	CPS	67	54	76	98	85	81	104	87	99	100	95	95	70	1111
		CWS	23	21	25	33	26	34	43	27	32	31	29	25	19	368
		Total	90	75	101	131	111	115	147	114	131	131	124	120	89	1479
	Union East	CPS	63	48	89	103	93	94	94	104	98	94	104	80	76	1140
		CWS	24	21	34	36	29	26	35	38	45	22	30	25	21	386
		Total	87	69	123	139	122	120	129	142	143	116	134	105	97	1526
	Union West	CPS	58	54	77	84	88	83	98	79	98	76	103	71	68	1037
		CWS	25	23	27	42	30	25	27	24	33	30	37	21	22	366
		Total	83	77	104	126	118	108	125	103	131	106	140	92	90	1403
	County Totals	CPS	188	156	242	285	266	258	296	270	295	270	302	246	214	3288
		CWS	72	65	86	111	85	85	105	89	110	83	96	71	62	1120
		Total	260	221	328	396	351	343	401	359	405	353	398	317	276	4408
WARREN	Warren	CPS	59	82	86	78	71	77	61	54	88	97	81	76	62	972
		CWS	28	23	32	27	22	27	28	19	30	34	23	26	20	339
		Total	87	105	118	105	93	104	89	73	118	131	104	102	82	1311
	County Totals	CPS	59	82	86	78	71	77	61	54	88	97	81	76	62	972
		CWS	28	23	32	27	22	27	28	19	30	34	23	26	20	339
		Total	87	105	118	105	93	104	89	73	118	131	104	102	82	1311
County CPS Referral Total		CPS	3,755	3,825	4,461	5,418	4,653	4,587	5,091	4,502	5,302	4,965	5,445	4,550	3,989	60,543
County CWS Referral Total		CWS	1,253	1,355	1,578	1,942	1,570	1,473	1,792	1,580	1,756	1,585	1,734	1,455	1,245	20,318
County Referral Total		Total	5,008	5,180	6,039	7,360	6,223	6,060	6,883	6,082	7,058	6,550	7,179	6,005	5,234	80,861
Central Region IAIU	CPS	40	57	39	67	63	47	61	47	61	66	82	57	58	745	
	CWS	0	0	0	0	0	0	0	0	0	0	0	0	0	0	
	Total	40	57	39	67	63	47	61	47	61	66	82	57	58	745	
Metro Region IAIU	CPS	40	38	50	65	61	51	55	47	62	45	64	41	36	655	
	CWS	0	0	0	0	0	0	0	0	0	0	0	0	0	0	
	Total	40	38	50	65	61	51	55	47	62	45	64	41	36	655	
Northern Region IAIU	CPS	42	34	63	71	70	64	58	74	83	57	89	64	53	822	
	CWS	0	0	0	0	0	0	0	0	0	0	0	0	0	0	
	Total	42	34	63	71	70	64	58	74	83	57	89	64	53	822	
Southern Region IAIU	CPS	61	76	67	100	58	71	92	70	85	90	90	69	66	995	
	CWS	0	0	0	0	0	0	0	0	0	0	0	0	0	0	
	Total	61	76	67	100	58	71	92	70	85	90	90	69	66	995	
IAIU CPS Subtotal		CPS	183	205	219	303	252	233	266	238	291	258	325	231	213	3,217
IAIU CWS Subtotal		CWS	0	0	0	0	0	0	0	0	0	0	0	0	0	0
IAIU Subtotal		Total	183	205	219	303	252	233	266	238	291	258	325	231	213	3,217
County and IAIU CPS Subtotal		CPS	3,938	4,030	4,680	5,721	4,905	4,820	5,357	4,740	5,593	5,223	5,770	4,781	4,202	63,760
County and IAIU CWS Subtotal		CWS	1,253	1,355	1,578	1,942	1,570	1,473	1,792	1,580	1,756	1,585	1,734	1,455	1,245	20,318
Unable to Determine⁽¹⁾		Total	128	122	123	135	117	121	149	119	151	132	127	147	138	1,709
Other Offices		Total	0	3	1	3	1	4	3	0	1	3	3	0	1	23
Grand Total		Total	5,319	5,510	6,382	7,801	6,593	6,418	7,301	6,439	7,501	6,943	7,634	6,383	5,586	85,810

⁽¹⁾CPS Reports or CWS Referrals not assigned to an office through the Assignment Designee, but were assigned to an office for an assessment or investigation.