



NEW JERSEY DEPARTMENT OF
CHILDREN AND FAMILIES

Child Protection and Permanency

Monthly Screening and Investigation Report July 2023

Christine Norbut Beyer, MSW
Commissioner



Table of Contents

Table 1: NJ State Central Registry Activity: Monthly Child Abuse and Neglect Hotline Calls, Intakes and Assignments to Child Protection & Permanency (CP&P) Offices

Chart 1: CP&P Annual Trends in Child Protection Services (CPS) Reports and Child Welfare Services (CWS) Referrals

Table 2: Assignments to CP&P Offices: CPS Reports and CWS Referrals

Table 3: Source of CPS Reports and CWS Referrals

Table 4: Monthly Count of CPS Reports and CWS Referrals Assigned to Counties

Table 5: Monthly Count of CPS Reports and CWS Referrals Assigned to CP&P Local Offices

Table 1: NJ State Central Registry Activity: Monthly Child Abuse and Neglect Hotline Calls, Intakes and Assignments to CP&P Offices^{1,2,7}

2022-2023	Hotline Call Activity				Intakes Recorded in NJ SPIRIT ^{6,8}														Assignments to CP&P Offices				
	Total Calls to SCR ³	Abandon Calls ⁴	Average Time to Answer (seconds)	Resulting NJS Intakes ⁵	CPS Reports		CWS Referrals		No Action Required (NAR)		Related Information (RI)		Information & Referral (I&R)		Information Only (IO)		Unusual Incident (UIRS)		CPS Reports		CWS Referrals		Total
					n	%	n	%	n	%	n	%	n	%	n	%	n	%	n	%	n	%	
July 2022	11,225	1,022	164	11,445	4,277	37.4%	590	5.2%	155	1.4%	2,712	23.7%	1,956	17.1%	1,749	15.3%	6	0.0%	4,277	87.9%	590	12.1%	4,867
August 2022	10,651	841	101	11,162	4,103	24.7%	589	3.5%	164	1.0%	2,465	14.8%	2,077	24.5%	1,734	31.3%	30	0.0%	4,103	87.4%	589	12.6%	4,692
September 2022	12,502	1,199	129	12,828	4,810	37.5%	681	5.3%	178	1.4%	2,818	22.0%	2,724	21.2%	1,614	12.6%	3	0.0%	4,810	87.6%	680	12.4%	5,490
October 2022	13,496	1,226	142	13,916	5,356	31.9%	724	4.3%	178	1.1%	3,153	18.8%	2,938	25.1%	1,546	18.8%	21	0.0%	5,356	88.1%	725	11.9%	6,081
November 2022	12,599	1,217	156	12,974	4,852	37.4%	762	5.9%	189	1.5%	2,998	23.1%	2,658	20.5%	1,509	11.6%	6	0.0%	4,852	86.4%	762	13.6%	5,614
December 2022	11,707	673	88	12,589	4,560	36.2%	730	5.8%	125	1.0%	2,922	23.2%	2,471	19.6%	1,579	12.5%	2	0.0%	4,760	86.7%	731	13.3%	5,491
January 2023	14,498	168	188	12,390	5,215	42.1%	962	7.8%	173	1.4%	3,234	26.1%	3,011	24.3%	1,609	13.0%	2	0.0%	5,463	85.0%	962	15.0%	6,425
February 2023	13,385	1,497	162	13,589	4,921	36.2%	893	6.6%	143	1.1%	3,234	23.8%	2,923	21.5%	1,473	10.8%	2	0.0%	5,141	85.2%	891	14.8%	6,032
March 2023	15,364	1,371	112	13,768	6,064	44.0%	1,119	8.1%	191	1.4%	3,177	23.1%	3,377	24.5%	1,817	13.2%	5	0.0%	6,064	84.4%	1,121	15.6%	7,185
April 2023	12,569	866	73	13,291	5,001	37.6%	870	6.5%	197	1.5%	3,068	23.1%	2,423	18.2%	1,728	13.0%	4	0.0%	5,001	85.2%	870	14.8%	5,871
May 2023	14,992	1,368	112	15,225	6,074	39.9%	1,053	6.9%	167	1.1%	3,347	22.0%	2,998	19.7%	1,921	12.6%	7	0.0%	6,074	85.2%	1,053	14.8%	7,127
June 2023	12,861	1,069	115	13,488	4,999	37.1%	955	7.1%	155	1.1%	3,075	22.8%	2,522	18.7%	1,778	13.2%	4	0.0%	4,999	84.0%	955	16.0%	5,954
July 2023	11,377	732	90	12,196	4,576	37.5%	834	6.8%	201	1.6%	2,828	23.2%	1,996	16.4%	1,758	14.4%	3	0.0%	4,576	84.6%	834	15.4%	5,410
				12,989	4,985	38.4%	828	6.4%	170	1.3%	3,002	23.1%	2,621	20.2%	1,678	12.9%	7	0.0%	4,985	85.8%	828	14.2%	5,813
Overall Total	12,864	1,019		168,861	64,808		10,762		2,216		39,031		34,074		21,815		95		65,476	85.9%	10,763	14.1%	76,239

¹Comes from three distinct sources: (1) the Automatic Call Distribution (ACD) phone system; which keeps a count of the number of calls and call routing; (2) Monthly NJSpirit Intakes; which record decision making on calls received by hotline screeners, and (3) NJSpirit

²The number of Intakes, CPS Reports, and CWS Referrals are based on an extract from NJSpirit.

Data extracted by the Office of Research, Evaluation, and Reporting on **August 08, 2023** includes all Intakes, CPS Reports, and CWS Referrals received from **July 01, 2023 through July 31, 2023**.

³The number calls received through the ACD System that were directed to a screener from any call-in phone number.

⁴The number of calls received through the ACD System that are abandoned either while waiting in queue or while ringing.

⁵The number of Intakes entered in NJSpirit from the number of calls received.

⁶The number of Intakes recorded in NJSpirit, by type of Intake. There is not a one-to-one relationship between an ACD call and an Intake; multiple calls to State Central Registry (SCR) may result in a single Intake, or one call may result in multiple Intakes.

⁷Intake: The process of documenting: a report of alleged abuse or neglect of a child (CPS); a request for services on behalf of a child, or a referral of a child for services (CWS); a call in which the caller provides additional or clarifying information about a current service

CP&P Annual Trends in CPS Reports and CWS Referrals

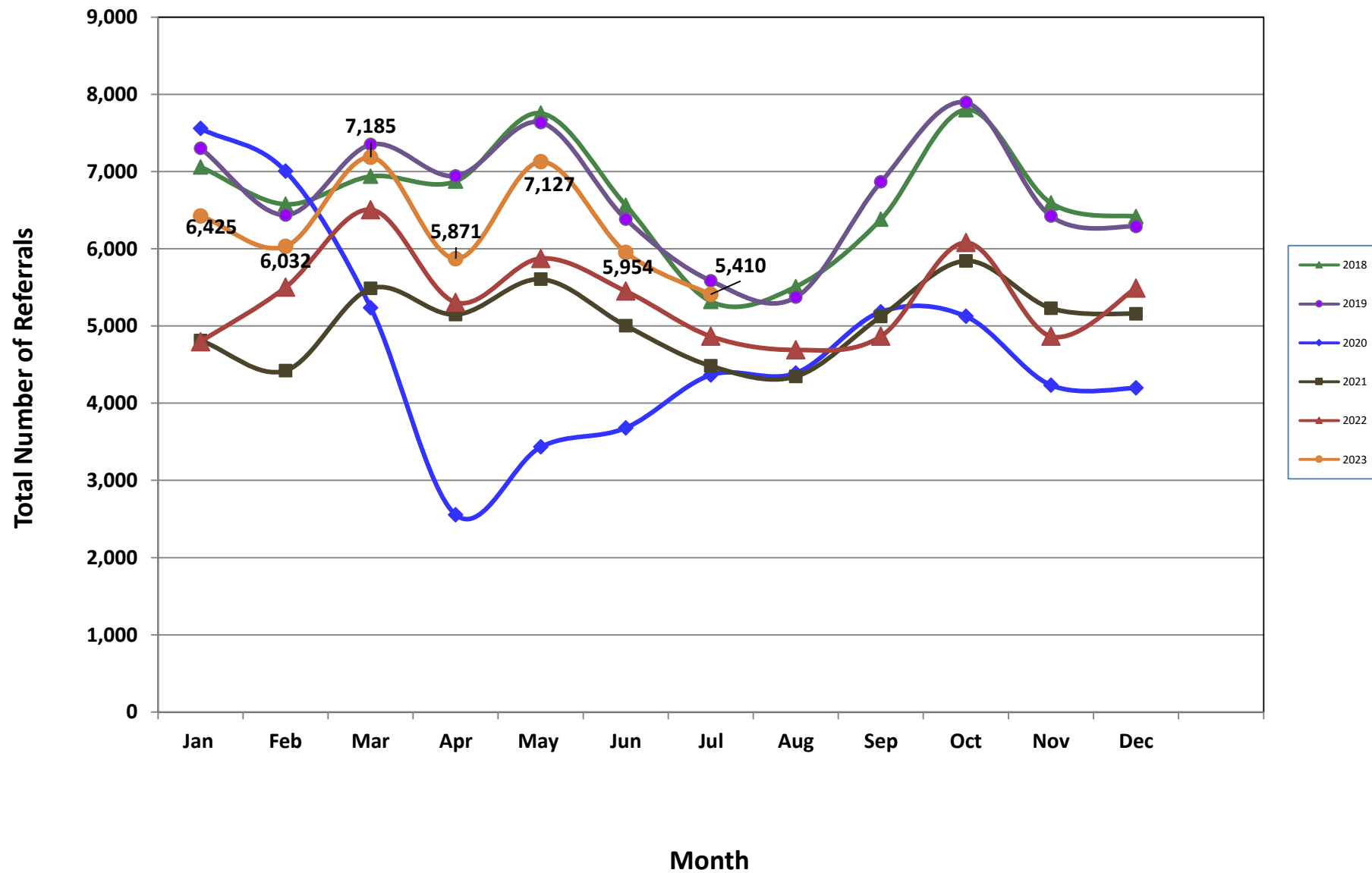


Table 2: Assignments to CP&P Offices: CPS Reports and CWS Referrals¹

Intake Date ³		CPS Reports ²	CWS Referrals ²	Total Assignments ²
2018	Jan 2018	5,276	1,784	7,060
	Feb 2018	4,933	1,644	6,577
	Mar 2018	5,212	1,727	6,939
	Apr 2018	5,275	1,601	6,876
	May 2018	5,920	1,836	7,756
	Jun 2018	4,948	1,615	6,563
	Jul 2018	4,011	1,308	5,319
	Aug 2018	4,102	1,408	5,510
	Sep 2018	4,748	1,634	6,382
	Oct 2018	5,790	2,011	7,801
	Nov 2018	4,973	1,620	6,593
	Dec 2018	4,891	1,527	6,418
	Total	60,079	19,715	79,794
2019	Jan 2019	5,443	1,858	7,301
	Feb 2019	4,811	1,628	6,439
	Mar 2019	5,677	1,824	7,501
	Apr 2019	5,313	1,630	6,943
	May 2019	5,853	1,781	7,634
	Jun 2019	4,874	1,509	6,383
	Jul 2019	4,277	1,309	5,586
	Aug 2019	4,068	1,306	5,374
	Sep 2019	5,315	1,551	6,866
	Oct 2019	5,968	1,926	7,894
	Nov 2019	4,991	1,432	6,423
	Dec 2019	4,855	1,434	6,289
	Total	61,445	19,188	80,633
2020	Jan 2020	5,715	1,842	7,557
	Feb 2020	5,380	1,624	7,004
	Mar 2020	4,172	1,065	5,237
	Apr 2020	2,149	407	2,556
	May 2020	2,897	537	3,434
	Jun 2020	3,045	636	3,681
	Jul 2020	3,628	738	4,366
	Aug 2020	3,569	822	4,391
	Sep 2020	4,153	1,030	5,183
	Oct 2020	4,257	868	5,125
	Nov 2020	3,564	670	4,234
	Dec 2020	3,517	681	4,198
	Total	46,046	10,920	56,966

Table 2: Assignments to CP&P Offices: CPS Reports and CWS Referrals¹

Intake Date ³		CPS Reports ²	CWS Referrals ²	Total Assignments ²
2021	Jan 2021	4,018	794	4,812
	Feb 2021	3,767	655	4,422
	Mar 2021	4,657	830	5,487
	Apr 2021	4,398	750	5,148
	May 2021	4,870	736	5,606
	Jun 2021	4,412	592	5,004
	Jul 2021	3,914	570	4,484
	Aug 2021	3,866	482	4,348
	Sep 2021	4,559	564	5,123
	Oct 2021	5,213	630	5,843
	Nov 2021	4,689	541	5,230
	Dec 2021	4,601	557	5,158
	Total	52,964	7,701	60,665
2022	Jan 2022	4,274	523	4,797
	Feb 2022	4,867	635	5,502
	Mar 2022	5,780	727	6,507
	Apr 2022	4,669	636	5,305
	May 2022	5,228	647	5,875
	Jun 2022	4,854	598	5,452
	Jul 2022	4,277	590	4,867
	Aug 2022	4,103	589	4,692
	Sep 2022	4,810	680	5,490
	Oct 2022	5,356	725	6,081
	Nov 2022	4,852	762	5,614
	Dec 2022	4,760	731	5,491
	Total	57,830	7,843	65,673
2023	Jan 2023	5,461	962	6,423
	Feb 2023	5,141	891	6,032
	Mar 2023	6,064	1,121	7,185
	Apr 2023	5,001	870	5,871
	May 2023	6,074	1,053	7,127
	Jun 2023	4,999	955	5,954
	Jul 2023	4,576	834	5,410
	Total	37,316	5,852	38,592
Grand Total		315,680	71,219	382,323

¹Source of Data: NJ SPIRIT

²A CPS Report or a CWS Referral may include multiple children in a family, with one or more allegation or request for services. In these cases, each CPS Report or CWS Referral is counted once - the CPS Report or the CWS Referral is the unit of analysis rather than the child.

³Prior to January 2014, the number of CPS Reports and CWS Referrals was based on the type of assignment of the CPS Report or CWS Referral. Beginning in January 2014, the number of CPS Reports and CWS Referrals is based on the number of CPS Reports and CWS Referrals received.

Table 3: Source of CPS Reports and CWS Referrals

	Source	Jul 2022	Aug 2022	Sep 2022	Oct 2022	Nov 2022	Dec 2022	Jan 2023	Feb 2023	Mar 2023	Apr 2023	May 2023	Jun 2023	Jul 2023		13 Month Total	
CPS Reports and CWS Referrals	School Staff	162	91	1,130	1,602	1,394	1,302	1,809	1,776	2,267	1,242	1,923	885	246	5%	15,829	21%
	Healthcare Provider	787	777	747	843	825	836	843	865	970	893	916	910	884	16%	11,096	15%
	Law Enforcement	1,624	1,617	1,421	1,514	1,422	1,416	1,525	1,391	1,548	1,566	1,820	1,782	1928	36%	20,574	27%
	Government Agency	276	260	243	258	240	231	298	273	309	261	316	310	294	5%	3,569	5%
	Parent	420	413	421	426	342	383	419	351	442	439	460	459	435	8%	5,410	7%
	Relative/Friend/Neighbor	380	346	337	296	313	291	304	267	338	331	413	376	377	7%	4,369	6%
	Anonymous	437	458	502	480	458	416	489	435	529	435	544	476	452	8%	6,111	8%
	CP&P	53	46	57	49	45	42	58	60	76	57	64	67	62	1%	736	1%
	Court/Legal	144	147	139	135	113	122	135	121	172	114	145	140	116	2%	1,743	2%
	Community Group/Individual	235	211	180	158	165	163	217	209	184	171	187	218	229	4%	2,527	3%
	Facility Staff (incl Correctional Facility)	59	52	35	44	45	43	50	38	51	65	71	56	59	1%	668	1%
	Child (Self)	30	34	33	21	25	24	42	30	31	31	42	36	28	1%	407	1%
	Other	241	216	224	233	199	208	210	190	240	246	208	223	271	5%	2,909	4%
	Daycare/Babysitter	19	24	21	22	28	14	26	26	28	20	18	16	29	1%	291	0%
Total		4,867	4,692	5,490	6,081	5,614	5,491	6,425	6,032	7,185	5,871	7,127	5,954	5,410		76,239	

Table 4: Monthly Count of CPS Reports and CWS Referrals Assigned to Counties

County														Average Number of Assignments Last 13 Months	Numerical Difference
	Jul 2022	Aug 2022	Sep 2022	Oct 2022	Nov 2022	Dec 2022	Jan 2023	Feb 2023	Mar 2023	Apr 2023	May 2023	Jun 2023	Jul 2023		
Atlantic	197	217	236	256	197	246	281	222	289	255	296	258	265	247	7
Bergen	305	276	315	356	350	344	407	398	438	321	418	357	305	353	-52
Burlington	284	240	305	314	332	288	335	300	347	301	340	285	273	303	-12
Camden	385	415	511	499	472	461	486	481	579	483	556	502	449	483	-53
Cape May	76	78	80	81	69	65	74	67	78	73	92	71	61	74	-10
Cumberland	180	166	174	195	183	185	215	171	214	191	226	208	179	191	-29
Essex	477	497	528	590	562	548	633	612	731	568	739	566	530	583	-36
Gloucester	211	190	222	221	248	235	265	233	273	225	286	239	232	237	-7
Hudson	323	242	356	352	342	370	408	388	513	384	451	386	337	373	-49
Hunterdon	29	32	52	54	49	39	53	41	48	37	47	46	60	45	14
Mercer	239	232	236	294	240	227	245	288	335	277	286	249	252	262	3
Middlesex	283	308	409	436	422	405	503	453	561	389	526	420	376	422	-44
Monmouth	236	266	289	317	317	277	323	321	350	294	348	308	307	304	-1
Morris	165	171	190	230	179	195	237	221	232	203	224	219	201	205	-18
Ocean	340	320	356	391	352	341	382	350	484	388	450	400	344	377	-56
Passaic	295	264	323	396	326	348	420	385	435	405	510	425	313	373	-112
Salem	62	67	70	60	64	73	83	65	75	68	81	58	68	69	10
Somerset	113	92	130	174	137	132	171	173	180	146	174	152	116	145	-36
Sussex	73	69	87	114	103	85	115	87	135	90	129	108	100	100	-8
Union	281	259	265	353	301	293	345	369	397	328	404	322	296	324	-26
Warren	73	78	100	91	80	81	108	100	105	111	113	89	95	94	6
County Subtotals	4,627	4,479	5,234	5,774	5,325	5,238	6,089	5,725	6,799	5,537	6,696	5,668	5,159	5,565	-509
Central Region IAIU	38	35	47	50	56	46	53	54	77	64	89	57	49	55	-8
Metro Region IAIU	22	23	34	54	33	24	44	42	57	32	67	43	32	39	-11
Northern Region IAIU	32	33	42	50	50	50	57	36	69	63	81	33	29	48	-4
Southern Region IAIU	56	27	50	69	50	52	81	76	72	66	84	62	59	62	-3
IAIU Subtotals	148	118	173	223	189	172	235	208	275	225	321	195	169	204	-26
¹ Unable to Determine	90	93	80	84	99	81	97	99	109	102	107	89	81	93	-8
Other Offices	2	2	3	0	1	1	2	0	2	7	3	2	1	2	-1
Grand Total	4,867	4,692	5,490	6,081	5,614	5,492	6,423	6,032	7,185	5,871	7,127	5,954	5,410	5,864	-544

¹CPS Reports or CWS Referrals not assigned to an office through the Assignment Designee, but were assigned to an office for an assessment or investigation.



Table 5: Monthly Count of CPS Reports and CWS Referrals Assigned to CP&P Local Offices

County	Local Office	Type of Referral	Jul 2022	Aug 2022	Sep 2022	Oct 2022	Nov 2022	Dec 2022	Jan 2023	Feb 2023	Mar 2023	Apr 2023	May 2023	Jun 2023	Jul 2023	Total	
ATLANTIC	Atlantic East	CPS	88	100	106	106	90	111	114	105	114	110	130	105	114	1,393	
		CWS	21	22	15	15	20	20	28	22	35	23	26	24	28	299	
		Total	109	122	121	121	110	131	142	127	149	133	156	129	142	1,692	
	Atlantic West	CPS	74	84	107	113	75	92	112	112	85	123	100	126	106	102	1,299
		CWS	14	11	8	22	12	20	27	10	17	22	14	23	21	221	
		Total	88	95	115	135	87	112	139	95	140	122	140	129	123	1,520	
	County Totals	CPS	162	184	213	219	165	203	226	190	237	210	256	211	216	2,692	
		CWS	35	33	23	37	32	40	55	32	52	45	40	47	49	520	
		Total	197	217	236	256	197	243	281	222	289	255	296	258	265	3,212	
BERGEN	Bergen Central	CPS	108	82	117	137	145	126	143	149	153	116	139	144	105	1,664	
		1,371.00	6064	27	17	19	191	25	3177	21	3377	19	24	27	14	13,002	
		866.00	122	109	134	156	166	151	163	170	181	135	163	171	119	1,940	
	14,992.00	1,368.00	160	142	156	176	159	168	214	194	215	151	215	166	155	2,271	
		CWS	23	25	25	24	25	25	30	34	43	35	40	20	31	380	
		Total	183	167	181	200	184	193	244	228	258	186	255	186	186	2,651	
	County Totals	CPS	268	224	273	313	304	294	357	343	368	267	354	310	260	3,935	
		CWS	37	52	42	43	46	50	50	55	71	54	64	47	45	656	
		Total	305	276	315	356	350	344	407	398	439	321	418	357	305	4,591	
BURLINGTON	Burlington East	CPS	115	96	130	136	133	117	146	126	142	115	150	109	112	1,627	
		CWS	16	22	26	19	20	25	32	22	28	34	20	26	26	316	
		Total	131	118	156	155	153	142	178	148	170	149	170	135	138	1,943	
	Burlington West	CPS	134	106	125	132	154	122	128	129	146	135	146	124	109	1,690	
		CWS	19	16	24	27	25	24	29	23	32	17	24	26	26	312	
		Total	153	122	149	159	179	146	157	152	178	152	170	150	135	2,002	
	County Totals	CPS	249	202	255	268	287	239	274	255	288	250	296	233	221	3,317	
		CWS	35	38	50	46	45	49	61	45	60	51	44	52	52	628	
		Total	284	240	305	314	332	288	335	300	348	301	340	285	273	3,945	
CAMDEN	Camden Central	CPS	95	112	124	136	97	97	116	107	141	96	123	118	102	1,464	
		CWS	13	20	22	20	15	21	18	19	22	26	22	24	22	264	
		Total	108	132	146	156	112	118	134	126	163	122	145	142	124	1,728	
	Camden East	CPS	84	68	111	93	121	96	110	102	105	106	124	91	87	1,298	
		CWS	8	9	17	20	16	15	12	27	19	16	16	19	29	223	
		Total	92	77	128	113	137	111	122	129	124	122	140	110	116	1,521	
	Camden North	CPS	73	86	110	109	87	101	89	98	118	108	101	110	76	1,266	
		CWS	18	14	12	16	32	20	19	25	33	16	17	26	25	273	
		Total	91	100	122	125	119	121	108	123	151	124	118	136	101	1,539	
	Camden South	CPS	81	92	102	93	86	92	103	92	114	94	122	91	86	1,248	
		CWS	13	14	13	12	18	19	19	11	26	21	31	23	22	242	
		Total	94	106	115	105	104	111	122	103	140	115	153	114	108	1,490	
	County Totals	CPS	333	358	447	431	391	386	418	399	478	404	470	410	351	5,276	
		CWS	52	57	64	68	81	75	68	82	100	79	86	92	98	1,002	
		Total	385	415	511	499	472	461	486	481	578	483	556	502	449	6,278	
CAPE MAY	Cape May	CPS	68	66	67	71	63	55	66	55	65	57	73	52	55	813	
		CWS	8	12	13	10	6	8	8	12	13	16	19	19	6	150	
		Total	76	78	80	81	69	63	74	67	78	73	92	71	61	963	
	County Totals	CPS	68	66	67	71	63	55	66	55	65	57	73	52	55	813	
		CWS	8	12	13	10	6	8	8	12	13	16	19	19	6	150	
Total	76	78	80	81	69	63	74	67	78	73	92	71	61	963			
CUMBERLAND	Cumberland East	CPS	62	66	56	82	78	61	87	62	65	58	78	62	71	888	
		CWS	10	12	13	5	3	13	17	15	16	9	18	24	11	166	
		Total	72	78	69	87	81	74	104	77	81	67	96	86	82	1,054	
	Cumberland West	CPS	92	78	93	91	95	98	99	81	111	103	120	97	83	1,241	
		CWS	16	10	12	17	7	13	12	13	22	21	10	26	14	193	
		Total	108	88	105	108	102	111	111	94	133	124	130	123	97	1,434	
	County Totals	CPS	154	144	149	173	173	159	186	143	176	161	198	159	154	2,129	
CWS		26	22	25	22	10	26	29	28	38	30	28	50	25	359		
Total		180	166	174	195	183	185	215	171	214	191	226	209	179	2,488		

Data in this report is preliminary and may differ from any final report. This report is produced to ensure continuous quality improvement throughout DCF.



Table 5: Monthly Count of CPS Reports and CWS Referrals Assigned to CP&P Local Offices

County	Local Office	Type of Referral														Total
			Jul 2022	Aug 2022	Sep 2022	Oct 2022	Nov 2022	Dec 2022	Jan 2023	Feb 2023	Mar 2023	Apr 2023	May 2023	Jun 2023	Jul 2023	
ESSEX	Essex Central	CPS	73	79	85	89	70	73	69	71	88	68	85	53	63	966
		CWS	8	9	10	12	19	16	13	16	21	10	30	19	9	192
		Total	81	88	95	101	89	89	82	87	109	78	115	72	72	1,158
	Essex North	CPS	71	60	86	92	85	104	101	118	119	94	122	92	69	1,213
		CWS	13	5	8	16	13	15	18	17	16	16	26	24	11	198
		Total	84	65	94	108	98	119	119	135	135	110	148	116	80	1,411
	Essex South	CPS	77	83	66	90	87	93	99	84	105	84	97	84	94	1143
		CWS	12	9	11	19	12	7	23	14	37	24	15	23	11	217
		Total	89	92	77	109	99	100	122	98	142	108	112	107	105	1360
	Newark Center City	CPS	65	73	74	93	77	69	77	71	83	75	95	93	79	1024
		CWS	9	10	8	14	13	12	13	13	17	9	26	11	11	166
		Total	74	83	82	107	90	81	90	84	100	84	121	104	90	1190
	Newark Northeast	CPS	61	74	79	77	82	68	90	89	95	91	109	114	85	1114
		CWS	10	11	14	8	16	14	23	18	21	9	23	21	15	203
		Total	71	85	93	85	98	82	113	107	116	100	132	135	100	1317
	Newark South	CPS	68	75	73	74	76	68	93	81	114	77	101	106	68	1074
		CWS	10	9	14	6	12	8	17	20	15	11	10	22	15	169
		Total	78	84	87	80	88	76	110	101	129	88	111	128	83	1243
	County Totals	CPS	415	444	463	515	477	475	529	514	604	489	609	542	458	6534
		CWS	62	53	65	75	85	72	107	98	127	79	130	120	72	1145
		Total	477	497	528	590	562	547	636	612	731	568	739	662	530	7679
GLOUCESTER	Gloucester East	CPS	90	78	74	75	100	97	102	77	113	84	87	77	79	1133
		CWS	13	11	15	10	14	21	16	12	19	15	16	19	8	189
		Total	103	89	89	85	114	118	118	89	132	99	103	96	87	1322
	Gloucester West	CPS	101	85	110	114	114	99	125	123	121	116	150	67	127	1452
		CWS	7	16	23	22	20	18	21	21	20	10	33	13	18	242
		Total	108	101	133	136	134	117	146	144	141	126	183	80	145	1694
	County Totals	CPS	191	163	184	189	214	196	227	200	234	200	237	144	206	2585
CWS		20	27	38	32	34	39	37	33	39	25	49	32	26	431	
Total		211	190	222	221	248	235	264	233	273	225	286	176	232	3016	
HUDSON	Hudson Central	CPS	90	75	93	82	89	85	95	104	113	105	121	67	71	1190
		CWS	10	9	11	15	20	19	13	19	23	20	22	15	21	217
		Total	100	84	104	97	109	104	108	123	136	125	143	82	92	1407
	Hudson North	CPS	69	48	86	88	69	80	86	81	100	85	106	41	76	1015
		CWS	9	6	15	5	9	7	20	18	24	13	15	5	12	158
		Total	78	54	101	93	78	87	106	99	124	98	121	46	88	1173
	Hudson South	CPS	61	40	70	59	53	70	80	60	107	55	71	116	72	914
		CWS	10	8	7	14	12	10	16	12	22	5	13	18	20	167
		Total	71	48	77	73	65	80	96	72	129	60	84	134	92	1081
	Hudson West	CPS	67	47	65	80	76	82	80	78	105	79	91	97	58	1005
		CWS	7	9	9	9	14	17	18	16	19	22	12	18	7	177
		Total	74	56	74	89	90	99	98	94	124	101	103	115	65	1182
	County Totals	CPS	287	210	314	309	287	317	341	323	425	324	389	321	277	4124
		CWS	36	32	42	43	55	53	67	65	88	60	62	56	60	719
		Total	323	242	356	352	342	370	408	388	513	384	451	377	337	4843
HUNTERDON	Hunterdon	CPS	25	27	49	50	40	35	46	36	41	32	41	100	48	570
		CWS	4	5	3	4	9	4	7	5	7	5	6	24	12	95
		Total	29	32	52	54	49	39	53	41	48	37	47	124	60	665
	County Totals	CPS	25	27	49	50	40	35	46	36	41	32	41	100	48	570
		CWS	4	5	3	4	9	4	7	5	7	5	6	24	12	95
Total	29	32	52	54	49	39	53	41	48	37	47	124	60	665		
MERCER	Mercer North	CPS	103	103	122	130	108	106	101	124	119	121	140	143	111	1531
		CWS	19	14	10	11	23	17	15	27	15	27	24	14	17	233
		Total	122	117	132	141	131	123	116	151	134	148	164	157	128	1764
	Mercer South	CPS	104	99	90	129	98	96	106	113	172	108	101	116	112	1444
		CWS	13	16	14	24	11	8	23	23	29	21	21	23	12	238
		Total	117	115	104	153	109	104	129	136	201	129	122	139	124	1682
	County Totals	CPS	207	202	212	259	206	202	207	237	291	229	241	259	223	2975
CWS		32	30	24	35	34	25	38	50	44	48	45	37	29	471	
Total		239	232	236	294	240	227	245	287	335	277	286	296	252	3446	

Data in this report is preliminary and may differ from any final report. This report is produced to ensure continuous quality improvement throughout DCF.



Table 5: Monthly Count of CPS Reports and CWS Referrals Assigned to CP&P Local Offices

County	Local Office	Type of Referral														Total
			Jul 2022	Aug 2022	Sep 2022	Oct 2022	Nov 2022	Dec 2022	Jan 2023	Feb 2023	Mar 2023	Apr 2023	May 2023	Jun 2023	Jul 2023	
MIDDLESEX	Middlesex Central	CPS	64	79	100	109	91	102	119	135	150	107	134	123	85	1398
		CWS	7	2	17	21	15	11	20	15	29	14	30	25	22	228
		Total	71	81	117	130	106	113	139	150	179	121	164	148	107	1626
	Middlesex Coastal	CPS	106	116	137	139	153	139	167	130	160	117	163	133	121	1781
		CWS	14	12	19	14	16	13	30	23	24	15	27	27	24	258
		Total	120	128	156	153	169	152	197	153	184	132	190	160	145	2039
	Middlesex West	CPS	83	89	114	135	131	120	136	134	165	116	136	88	106	1553
		CWS	9	10	22	18	16	21	32	17	34	20	36	18	18	271
		Total	92	99	136	153	147	141	168	151	199	136	172	106	124	1824
	County Totals	CPS	253	284	351	383	375	361	422	399	475	340	433	344	312	4732
		CWS	30	24	58	53	47	45	82	55	87	49	93	70	64	757
		Total	283	308	409	436	422	406	504	454	562	389	526	414	376	5489
MONMOUTH	Monmouth North	CPS	123	123	142	187	158	143	154	160	167	131	173	101	150	1912
		CWS	13	23	11	15	24	17	26	27	26	24	23	12	29	270
		Total	136	146	153	202	182	160	180	187	193	155	196	113	179	2182
	Monmouth South	CPS	88	110	112	106	119	102	113	112	138	114	134	62	114	1424
		CWS	12	10	24	9	16	15	30	22	19	25	18	13	14	227
		Total	100	120	136	115	135	117	143	134	157	139	152	75	128	1651
	County Totals	CPS	211	233	254	293	277	245	267	272	305	245	307	163	264	3336
		CWS	25	33	35	24	40	32	56	49	45	49	41	25	43	497
		Total	236	266	289	317	317	277	323	321	350	294	348	188	307	3833
MORRIS	Morris East	CPS	67	70	82	99	88	83	92	78	83	81	90	93	87	1093
		CWS	9	7	5	10	13	13	17	16	22	14	10	20	11	167
		Total	76	77	87	109	101	96	109	94	105	95	100	113	98	1260
	Morris West	CPS	82	84	95	102	68	89	111	100	104	86	103	74	86	1184
		CWS	7	10	8	19	10	10	19	27	24	22	21	9	17	203
		Total	89	94	103	121	78	99	130	127	128	108	124	83	103	1387
	County Totals	CPS	149	154	177	201	156	172	203	178	187	167	193	167	173	2277
		CWS	16	17	13	29	23	23	36	43	46	36	31	29	28	370
		Total	165	171	190	230	179	195	239	221	233	203	224	196	201	2647
OCEAN	Ocean North	CPS	161	139	163	190	161	165	156	177	220	177	184	184	159	2236
		CWS	13	18	17	21	28	15	33	23	38	20	40	23	27	316
		Total	174	157	180	211	189	180	189	200	258	197	224	207	186	2552
	Ocean South	CPS	145	147	163	163	148	141	170	136	204	160	195	170	136	2078
		CWS	21	16	13	17	15	20	23	14	22	31	31	23	22	268
		Total	166	163	176	180	163	161	193	150	226	191	226	193	158	2346
	County Totals	CPS	306	286	326	353	309	306	326	313	424	337	379	354	295	4314
		CWS	34	34	30	38	43	35	56	37	60	51	71	46	49	584
		Total	340	320	356	391	352	341	382	350	484	388	450	400	344	4898
PASSAIC	Passaic Central	CPS	127	115	157	161	140	148	165	156	180	186	223	198	121	2077
		CWS	5	10	21	24	25	25	26	26	44	27	41	34	29	337
		Total	132	125	178	185	165	173	191	182	224	213	264	232	150	2414
	Passaic North	CPS	143	124	126	187	135	157	192	172	181	165	206	154	136	2078
		CWS	20	15	19	24	26	18	37	31	30	27	40	39	27	353
		Total	163	139	145	211	161	175	229	203	211	192	246	193	163	2431
	County Totals	CPS	270	239	283	348	275	305	357	328	361	351	429	352	257	4155
		CWS	25	25	40	48	51	43	63	57	74	54	81	73	56	690
		Total	295	264	323	396	326	348	420	385	435	405	510	425	313	4845
SALEM	Salem	CPS	51	62	61	53	56	67	68	60	61	55	67	50	53	764
		CWS	11	5	9	7	8	6	15	5	14	13	14	8	15	130
		Total	62	67	70	60	64	73	83	65	75	68	81	58	68	894
	County Totals	CPS	51	62	61	53	56	67	68	60	61	55	67	50	53	764
		CWS	11	5	9	7	8	6	15	5	14	13	14	8	15	130
Total		62	67	70	60	64	73	83	65	75	68	81	58	68	894	
SOMERSET	Somerset	CPS	102	81	116	152	124	123	150	146	151	127	145	133	104	1654
		CWS	11	11	14	22	13	10	21	27	29	19	29	19	12	237
		Total	113	92	130	174	137	133	171	173	180	146	174	152	116	1891
	County Totals	CPS	102	81	116	152	124	123	150	146	151	127	145	133	104	1654
		CWS	11	11	14	22	13	10	21	27	29	19	29	19	12	237
Total		113	92	130	174	137	133	171	173	180	146	174	152	116	1891	

Data in this report is preliminary and may differ from any final report. This report is produced to ensure continuous quality improvement throughout DCF.



Table 5: Monthly Count of CPS Reports and CWS Referrals Assigned to CP&P Local Offices

County	Local Office	Type of Referral														Total	
			Jul 2022	Aug 2022	Sep 2022	Oct 2022	Nov 2022	Dec 2022	Jan 2023	Feb 2023	Mar 2023	Apr 2023	May 2023	Jun 2023	Jul 2023		
SUSSEX	Sussex	CPS	65	64	78	100	89	75	97	70	117	71	110	88	93	1117	
		CWS	8	5	9	14	14	10	18	17	18	19	19	20	7	178	
		Total	73	69	87	114	103	85	115	87	135	90	129	108	100	1295	
	County Totals	CPS	65	64	78	100	89	75	97	70	117	71	110	88	93	1117	
		CWS	8	5	9	14	14	10	18	17	18	19	19	20	7	178	
		Total	73	69	87	114	103	85	115	87	135	90	129	108	100	1295	
UNION	Union Central	CPS	88	74	72	118	89	88	107	101	108	92	118	71	71	1197	
		CWS	10	9	8	11	12	13	19	20	17	14	19	13	19	184	
		Total	98	83	80	129	101	101	126	121	125	106	137	84	90	1381	
	Union East	CPS	90	78	69	95	80	66	95	104	109	90	119	102	93	1190	
		CWS	11	13	14	10	12	7	12	21	22	10	12	13	9	166	
		Total	101	91	83	105	92	73	107	125	131	100	131	115	102	1356	
	Union West	CPS	71	76	87	105	90	96	103	107	122	106	115	98	86	1262	
		CWS	11	9	15	14	18	23	10	17	19	16	21	25	18	216	
		Total	82	85	102	119	108	119	113	124	141	122	136	123	104	1478	
	County Totals	CPS	249	228	228	318	259	250	305	312	339	288	352	271	250	3649	
		CWS	32	31	37	35	42	43	41	58	58	40	52	51	46	566	
		Total	281	259	265	353	301	293	346	370	397	328	404	322	296	4215	
	WARREN	Warren	CPS	70	68	88	86	72	69	93	92	84	96	92	82	80	1072
			CWS	3	10	12	5	8	12	15	8	22	15	21	7	15	153
			Total	73	78	100	91	80	81	108	100	106	111	113	89	95	1225
County Totals		CPS	70	68	88	86	72	69	93	92	84	96	92	82	80	1072	
		CWS	3	10	12	5	8	12	15	8	22	15	21	7	15	153	
		Total	73	78	100	91	80	81	108	100	106	111	113	89	95	1225	
County CPS Referral Total		CPS	4,085	3,923	4,588	5,084	4,599	4,534	5,165	4,865	5,711	4,700	5,671	4,745	4,350	62,020	
County CWS Referral Total		CWS	542	556	646	690	726	700	930	861	1,092	837	1,025	924	809	10,338	
County Referral Total		Total	4,627	4,479	5,234	5,774	5,325	5,234	6,095	5,726	6,803	5,537	6,696	5,669	5,159	72,358	
Central Region IAIU		CPS	38	35	47	50	56	47	53	55	77	64	89	56	49	716	
		CWS	0	0	0	0	0	0	0	0	0	0	0	0	0	0	0
		Total	38	35	47	50	56	47	53	55	77	64	89	56	49	716	
Metro Region IAIU		CPS	22	23	34	54	33	25	45	44	57	32	67	43	32	511	
		CWS	0	0	0	0	0	0	0	0	0	0	0	0	0	0	0
		Total	22	23	34	54	33	25	45	44	57	32	67	43	32	511	
Northern Region IAIU		CPS	32	33	42	50	50	56	58	39	69	63	81	33	28	634	
		CWS	0	0	0	0	0	0	0	0	0	0	0	0	1	1	1
		Total	32	33	42	50	50	56	58	39	69	63	81	33	29	635	
Southern Region IAIU		CPS	56	27	50	69	50	53	81	77	72	66	84	62	59	806	
		CWS	0	0	0	0	0	0	0	0	0	0	0	0	0	0	0
		Total	56	27	50	69	50	53	81	77	72	66	84	62	59	806	
IAIU CPS Subtotal		CPS	148	118	173	223	189	181	237	215	275	225	321	194	168	2,667	
IAIU CWS Subtotal		CWS	0	0	0	0	0	0	0	0	0	0	0	1	1	1	
IAIU Subtotal		Total	148	118	173	223	189	181	237	215	275	225	321	194	169	2,668	
County and IAIU CPS Subtotal		CPS	4,233	4,041	4,761	5,307	4,788	4,715	5,402	5,080	5,986	4,925	5,992	4,939	4,518	64,687	
County and IAIU CWS Subtotal		CWS	542	556	646	690	726	700	930	861	1,092	837	1,025	924	810	10,339	
Unable to Determine(1)		Total	90	93	80	84	99	75	91	89	105	102	107	89	81	1,185	
Other Offices		Total	2	2	3	0	1	1	2	2	2	7	3	2	1	28	
Grand Total		Total	4,867	4,692	5,490	6,081	5,614	5,491	6,425	6,032	7,185	5,871	7,127	5,954	5,410	76,239	

(1) CPS Reports or CWS Referrals not assigned to an office through the Assignment Designee, but were assigned to an office for an assessment or investigation.