



Child Protection and Permanency

Monthly Screening and Investigation Report August 2018

Christine Norbut Beyer, MSW
Commissioner

September 9, 2018



NEW JERSEY DEPARTMENT OF
CHILDREN AND FAMILIES

Table of Contents

Table 1: NJ State Central Registry Activity: Monthly Child Abuse and Neglect Hotline Calls, Intakes and Assignments to Child Protection & Permanency (CP&P) Offices

Chart 1: CP&P Annual Trends in Child Protection Services (CPS) Reports and Child Welfare Services (CWS) Referrals

Table 2: Assignments to CP&P Offices: CPS Reports and CWS Referrals

Table 3: Source of CPS Reports and CWS Referrals

Table 4: Monthly Count of CPS Reports and CWS Referrals Assigned to Counties

Table 5: Monthly Count of CPS Reports and CWS Referrals Assigned to CP&P Local Offices

Table 1: NJ State Central Registry Activity: Monthly Child Abuse and Neglect Hotline Calls, Intakes and Assignments to CP&P Offices^{1,2,7}

2017 - 2018	Hotline Call Activity				Intakes Recorded in NJ SPIRIT ^{6,8}												Assignments to CP&P Offices				
	Total Calls to SCR ³	Abandon Calls ⁴	Average Time to Answer (seconds)	Resulting NJS Intakes ⁵	CPS Reports		CWS Referrals		No Action Required (NAR)		Related Information (RI)		Information & Referral (I&R)		Information Only (IO)		CPS Reports		CWS Referrals		Total
					n	%	n	%	n	%	n	%	n	%	n	%	n	%	n	%	
August 2017	11,672	445	38	12,927	3,866	29.9%	1,338	10.4%	393	3.0%	3,447	26.7%	1,535	11.9%	2,348	18.2%	3,866	74.3%	1,340	25.7%	5,206
September 2017	13,450	570	40	14,750	4,719	32.0%	1,642	11.1%	381	2.6%	3,951	26.8%	1,700	11.5%	2,357	16.0%	4,719	74.2%	1,643	25.8%	6,362
October 2017	15,474	657	45	16,828	5,613	33.4%	1,968	11.7%	305	1.8%	4,353	25.9%	1,883	11.2%	2,706	16.1%	5,613	74.1%	1,966	25.9%	7,579
November 2017	14,446	672	43	15,694	5,223	33.3%	1,750	11.2%	235	1.5%	4,246	27.1%	1,680	10.7%	2,560	16.3%	5,223	74.9%	1,753	25.1%	6,976
December 2017	13,005	560	38	14,194	4,601	32.4%	1,594	11.2%	220	1.5%	3,843	27.1%	1,724	12.1%	2,212	15.6%	4,601	74.3%	1,594	25.7%	6,195
January 2018	14,876	952	60	15,833	5,276	33.3%	1,784	11.3%	242	1.5%	4,346	27.4%	1,755	11.1%	2,430	15.3%	5,276	74.7%	1,784	25.3%	7,060
February 2018	13,558	727	54	14,638	4,933	33.7%	1,643	11.2%	251	1.7%	3,807	26.0%	1,740	11.9%	2,264	15.5%	4,933	75.0%	1,644	25.0%	6,577
March 2018	14,714	804	55	15,869	5,212	32.8%	1,727	10.9%	288	1.8%	4,187	26.4%	1,855	11.7%	2,600	16.4%	5,212	75.1%	1,727	24.9%	6,939
April 2018	14,148	727	54	15,227	5,275	34.6%	1,603	10.5%	252	1.7%	3,952	26.0%	1,818	11.9%	2,327	15.3%	5,275	76.7%	1,601	23.3%	6,876
May 2018	15,956	1,482	69	16,668	5,920	35.5%	1,833	11.0%	316	1.9%	4,104	24.6%	1,997	12.0%	2,498	15.0%	5,920	76.3%	1,836	23.7%	7,756
June 2018	13,796	1,021	72	14,490	4,948	34.1%	1,614	11.1%	264	1.8%	3,662	25.3%	1,693	11.7%	2,309	15.9%	4,948	75.4%	1,615	24.6%	6,563
July 2018	11,406	407	35	12,497	4,011	32.1%	1,307	10.5%	214	1.7%	3,387	27.1%	1,374	11.0%	2,204	17.6%	4,011	75.4%	1,308	24.6%	5,319
August 2018	11,633	460	43	12,708	4,102	32.3%	1,409	11.1%	252	2.0%	3,455	27.2%	1,307	10.3%	2,183	17.2%	4,102	74.4%	1,408	25.6%	5,510
	13,703	730	50	14,794	4,900	33.1%	1,632	11.0%	278	1.9%	3,903	26.4%	1,697	11.5%	2,384	16.1%	4,900	75.0%	1,632	25.0%	6,532
Overall Total	178,134	9,484		192,323	63,699		21,212		3,613		50,740		22,061		30,998		63,699	75.0%	21,219	25.0%	84,918

¹Comes from three distinct sources: (1) the Automatic Call Distribution (ACD) phone system; which keeps a count of the number of calls and call routing; (2) Monthly NJSpirit Intakes; which record decision making on calls received by hotline screeners, and (3) NJSpirit extracts of assigned CWS Referrals and CPS Reports.

²The number of Intakes, CPS Reports, and CWS Referrals are based on an extract from NJSpirit. Data extracted by the Office of Research, Evaluation, and Reporting on **September 9, 2018** includes all Intakes, CPS Reports, and CWS Referrals received from **August 1, 2018 through August 31, 2018**.

³The number calls received through the ACD System that were directed to a screener from any call-in phone number.

⁴The number of calls received through the ACD System that are abandoned either while waiting in queue or while ringing.

⁵The number of Intakes entered in NJSpirit from the number of calls received.

⁶The number of Intakes recorded in NJSpirit, by type of Intake. There is not a one-to-one relationship between an ACD call and an Intake; multiple calls to State Central Registry (SCR) may result in a single Intake, or one call may result in multiple Intakes.

⁷Intake: The process of documenting: a report of alleged abuse or neglect of a child (CPS); a request for services on behalf of a child, or a referral of a child for services (CWS); a call in which the caller provides additional or clarifying information about a current service case or active investigation (RI); informing a caller of, or referring a caller to, services available from other private or public sources (I&R); a call that requires no action by CP&P (NAR); or a response to a simple inquiry (IO).

⁸NJ SPIRIT: NJ Statewide Protection Investigation and Reporting Information Tool case management system

CP&P Annual Trends in CPS Reports and CWS Referrals

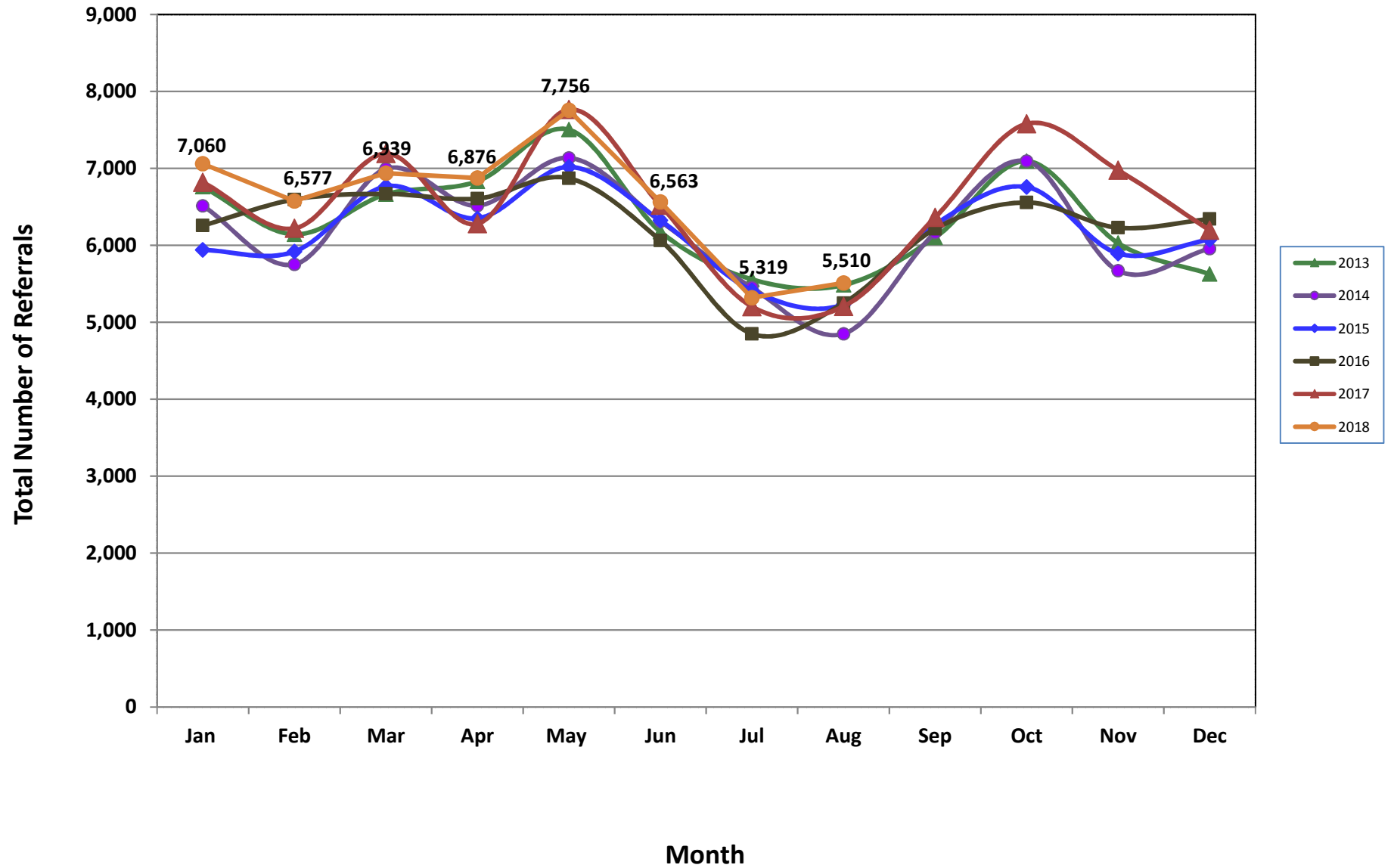


Table 2: Assignments to CP&P Offices: CPS Reports and CWS Referrals¹

Intake Date ³		CPS Reports ²	CWS Referrals ²	Total Assignments ²
2013	Jan 2013	5,464	1,296	6,760
	Feb 2013	4,966	1,177	6,143
	Mar 2013	5,355	1,309	6,664
	Apr 2013	5,430	1,402	6,832
	May 2013	5,993	1,510	7,503
	Jun 2013	4,947	1,230	6,177
	Jul 2013	4,330	1,228	5,558
	Aug 2013	4,330	1,155	5,485
	Sep 2013	4,851	1,251	6,102
	Oct 2013	5,614	1,481	7,095
	Nov 2013	4,694	1,334	6,028
	Dec 2013	4,397	1,229	5,626
	Total	60,371	15,602	75,973
2014	Jan 2014	5,097	1,416	6,513
	Feb 2014	4,457	1,295	5,752
	Mar 2014	5,408	1,586	6,994
	Apr 2014	5,049	1,467	6,516
	May 2014	5,501	1,635	7,136
	Jun 2014	4,796	1,517	6,313
	Jul 2014	4,202	1,247	5,449
	Aug 2014	3,629	1,222	4,851
	Sep 2014	4,668	1,498	6,166
	Oct 2014	5,509	1,586	7,095
	Nov 2014	4,254	1,416	5,670
	Dec 2014	4,509	1,447	5,956
	Total	57,079	17,332	74,411
2015	Jan 2015	4,549	1,391	5,940
	Feb 2015	4,574	1,345	5,919
	Mar 2015	5,187	1,580	6,767
	Apr 2015	4,967	1,384	6,351
	May 2015	5,457	1,561	7,018
	Jun 2015	4,887	1,436	6,323
	Jul 2015	4,140	1,273	5,413
	Aug 2015	3,978	1,256	5,234
	Sep 2015	4,776	1,495	6,271
	Oct 2015	5,139	1,619	6,758
	Nov 2015	4,417	1,477	5,894
	Dec 2015	4,530	1,544	6,074
	Total	56,601	17,361	73,962

Table 2: Assignments to CP&P Offices: CPS Reports and CWS Referrals¹

Intake Date ³		CPS Reports ²	CWS Referrals ²	Total Assignments ²
2016	Jan 2016	4,686	1,571	6,257
	Feb 2016	4,974	1,622	6,596
	Mar 2016	5,000	1,669	6,669
	Apr 2016	5,065	1,542	6,607
	May 2016	5,238	1,633	6,871
	Jun 2016	4,602	1,461	6,063
	Jul 2016	3,663	1,187	4,850
	Aug 2016	3,941	1,307	5,248
	Sep 2016	4,654	1,559	6,213
	Oct 2016	4,935	1,622	6,557
	Nov 2016	4,677	1,552	6,229
	Dec 2016	4,762	1,580	6,342
	Total	56,197	18,305	74,502
2017	Jan 2017	5,111	1,708	6,819
	Feb 2017	4,716	1,504	6,220
	Mar 2017	5,349	1,843	7,192
	Apr 2017	4,790	1,490	6,280
	May 2017	5,847	1,919	7,766
	Jun 2017	4,853	1,665	6,518
	Jul 2017	3,814	1,389	5,203
	Aug 2017	3,866	1,340	5,206
	Sep 2017	4,719	1,643	6,362
	Oct 2017	5,613	1,966	7,579
	Nov 2017	5,223	1,753	6,976
	Dec 2017	4,601	1,594	6,195
	Total	58,502	19,814	78,316
2018	Jan 2018	5,276	1,784	7,060
	Feb 2018	4,933	1,644	6,577
	Mar 2018	5,212	1,727	6,939
	Apr 2018	5,275	1,601	6,876
	May 2018	5,920	1,836	7,756
	Jun 2018	4,948	1,615	6,563
	Jul 2018	4,011	1,308	5,319
	Aug 2018	4,102	1,408	5,510
	Total	39,677	12,923	52,600
Grand Total		328,427	101,337	429,764

¹Source of Data: NJ SPIRIT

²A CPS Report or a CWS Referral may include multiple children in a family, with one or more allegation or request for services. In these cases, each CPS Report or CWS Referral is counted once - the CPS Report or the CWS Referral is the unit of analysis rather than the child.

³Prior to January 2014, the number of CPS Reports and CWS Referrals was based on the type of assignment of the CPS Report or CWS Referral. Beginning in January 2014, the number of CPS Reports and CWS Referrals is based on the number of CPS Reports and CWS Referrals received.

Table 3: Source of CPS Reports and CWS Referrals

	Source	Aug 2017	Sep 2017	Oct 2017	Nov 2017	Dec 2017	Jan 2018	Feb 2018	Mar 2018	Apr 2018	May 2018	Jun 2018	Jul 2018	Aug 2018		13 Month Total	
CPS Reports and CWS Referrals	School Staff	90	1211	2030	1851	1622	1932	1970	1969	1783	2213	1243	184	118	2%	18,216	21%
	Healthcare Provider	873	861	968	953	848	1003	809	931	932	994	885	904	920	17%	11,881	14%
	Law Enforcement	1169	1180	1236	1130	988	1018	1001	1149	1179	1264	1220	1238	1201	22%	14,973	18%
	Government Agency	423	442	475	399	408	392	410	466	417	446	441	436	468	8%	5,623	7%
	Parent	535	528	567	571	487	569	468	469	509	548	574	573	590	11%	6,988	8%
	Relative/Friend/Neighbor	494	462	513	493	396	531	394	440	475	496	517	475	488	9%	6,174	7%
	Anonymous	627	711	753	641	595	602	623	641	628	789	683	538	573	10%	8,404	10%
	CP&P	142	142	150	107	129	125	121	107	130	143	140	115	142	3%	1,693	2%
	Court/Legal	161	162	148	116	135	130	130	131	158	164	154	143	193	4%	1,925	2%
	Community Group/Individual	307	279	320	299	265	318	289	294	325	290	301	290	317	6%	3,894	5%
	Facility Staff (incl Correctional Facility)	92	89	97	75	46	85	70	72	68	97	64	101	135	2%	1,091	1%
	Child (Self)	41	46	32	41	25	49	33	41	38	34	49	38	53	1%	520	1%
	Other	235	236	272	273	237	294	242	207	217	261	272	267	289	5%	3,302	4%
	Daycare/Babysitter	17	13	18	27	14	12	17	22	17	17	20	17	23	0%	234	0%
Total		5,206	6,362	7,579	6,976	6,195	7,060	6,577	6,939	6,876	7,756	6,563	5,319	5,510		84,918	

Table 4: Monthly Count of CPS Reports and CWS Referrals Assigned to Counties

County														Average Number of Assignments Last 13 Months	Jul 18 to Aug 18 Numerical Difference
	Aug 2017	Sep 2017	Oct 2017	Nov 2017	Dec 2017	Jan 2018	Feb 2018	Mar 2018	Apr 2018	May 2018	Jun 2018	Jul 2018	Aug 2018		
Atlantic	245	255	293	253	221	291	208	267	260	326	284	213	231	257	18
Bergen	291	362	428	418	416	394	371	458	374	474	354	291	243	375	-48
Burlington	256	328	371	343	294	315	307	290	312	302	304	284	246	304	-38
Camden	492	530	675	576	535	634	526	559	562	643	564	472	485	558	13
Cape May	64	68	86	84	77	82	73	68	95	100	97	80	85	81	5
Cumberland	207	249	252	213	193	250	174	223	265	266	202	159	205	220	46
Essex	585	642	804	721	665	787	695	778	770	811	713	545	622	703	77
Gloucester	235	232	282	267	252	268	219	239	272	298	231	200	229	248	29
Hudson	290	418	452	454	418	439	386	466	454	509	412	330	342	413	12
Hunterdon	40	64	64	50	60	60	54	58	67	62	56	48	49	56	1
Mercer	222	308	282	298	232	264	262	262	295	330	274	223	247	269	24
Middlesex	257	420	533	525	419	540	463	498	473	534	474	358	366	451	8
Monmouth	264	349	442	381	327	413	384	427	376	446	341	302	277	364	-25
Morris	168	216	290	250	219	269	191	245	240	256	199	204	186	226	-18
Ocean	351	342	422	418	356	411	364	420	397	427	398	357	371	387	14
Passaic	319	425	576	513	421	451	456	469	448	571	423	307	383	443	76
Salem	54	102	83	100	80	90	68	99	92	90	79	65	77	83	12
Somerset	117	127	166	169	172	156	157	179	174	180	189	141	128	158	-13
Sussex	92	92	106	111	92	126	90	102	124	112	118	82	82	102	0
Union	246	345	353	343	324	361	366	352	321	379	343	260	221	324	-39
Warren	69	117	131	102	72	94	101	117	108	117	110	87	105	102	18
County Subtotals	4,864	5,991	7,091	6,589	5,845	6,695	5,915	6,576	6,479	7,233	6,165	5,008	5,180	6,125	172
Central Region IAIU	55	54	68	73	55	62	58	63	62	89	64	40	57	62	17
Metro Region IAIU	25	41	58	48	56	54	63	48	52	78	60	40	38	51	-2
Northern Region IAIU	34	51	70	58	54	60	53	53	69	88	60	42	34	56	-8
Southern Region IAIU	63	66	102	77	84	90	75	74	86	95	71	61	76	78	15
IAIU Subtotals	177	212	298	256	249	266	249	238	269	350	255	183	205	247	22
Unable to Determine¹	163	158	187	129	98	94	407	122	125	169	137	128	122	157	-6
Other Offices	2	1	3	2	3	5	6	3	3	4	6	0	3	3	3
Grand Total	5,206	6,362	7,579	6,976	6,195	7,060	6,577	6,939	6,876	7,756	6,563	5,319	5,510	6,532	191

¹CPS Reports or CWS Referrals not assigned to an office through the Assignment Designee, but were assigned to an office for an assessment or investigation.

Table 5: Monthly Count of CPS Reports and CWS Referrals Assigned to CP&P Local Offices

County	Local Office	Type of Referral														Total
			Aug 2017	Sep 2017	Oct 2017	Nov 2017	Dec 2017	Jan 2018	Feb 2018	Mar 2018	Apr 2018	May 2018	Jun 2018	Jul 2018	Aug 2018	
ATLANTIC	Atlantic East	CPS	102	107	138	99	94	127	95	131	118	157	132	97	106	1,503
		CWS	41	35	47	51	33	36	29	28	32	40	49	31	46	498
		Total	143	142	185	150	127	163	124	159	150	197	181	128	152	2,001
	Atlantic West	CPS	81	90	74	79	75	94	68	75	88	98	74	68	60	1,024
		CWS	21	23	34	24	19	34	16	33	22	31	29	17	19	322
		Total	102	113	108	103	94	128	84	108	110	129	103	85	79	1,346
	County Totals	CPS	183	197	212	178	169	221	163	206	206	255	206	165	166	2,527
		CWS	62	58	81	75	52	70	45	61	54	71	78	48	65	820
		Total	245	255	293	253	221	291	208	267	260	326	284	213	231	3,347
BERGEN	Bergen Central	CPS	70	106	142	140	128	138	112	144	122	141	112	76	59	1,490
		CWS	33	47	45	47	48	40	44	54	37	58	52	32	25	562
		Total	103	153	187	187	176	178	156	198	159	199	164	108	84	2,052
	Bergen South	CPS	138	149	182	167	177	154	163	198	144	199	119	136	112	2,038
		CWS	50	60	59	64	63	62	52	62	71	76	71	47	47	784
		Total	188	209	241	231	240	216	215	260	215	275	190	183	159	2,822
	County Totals	CPS	208	255	324	307	305	292	275	342	266	340	231	212	171	3,528
		CWS	83	107	104	111	111	102	96	116	108	134	123	79	72	1,346
		Total	291	362	428	418	416	394	371	458	374	474	354	291	243	4,874
BURLINGTON	Burlington East	CPS	97	125	146	137	101	129	110	118	116	104	115	117	93	1,508
		CWS	30	39	52	43	38	39	46	35	36	46	45	37	33	519
		Total	127	164	198	180	139	168	156	153	152	150	160	154	126	2,027
	Burlington West	CPS	96	116	126	117	99	108	117	105	108	120	114	100	83	1,409
		CWS	33	48	47	46	56	39	34	32	52	32	30	30	37	516
		Total	129	164	173	163	155	147	151	137	160	152	144	130	120	1,925
	County Totals	CPS	193	241	272	254	200	237	227	223	224	224	229	217	176	2,917
		CWS	63	87	99	89	94	78	80	67	88	78	75	67	70	1,035
		Total	256	328	371	343	294	315	307	290	312	302	304	284	246	3,952
CAMDEN	Camden Central	CPS	117	106	148	129	122	157	108	126	111	141	109	113	109	1,596
		CWS	36	27	40	41	51	31	30	39	32	47	33	27	27	461
		Total	153	133	188	170	173	188	138	165	143	188	142	140	136	2,057
	Camden East	CPS	94	104	123	118	100	116	99	129	139	127	113	99	99	1,460
		CWS	28	30	49	46	27	39	37	32	30	30	41	32	36	457
		Total	122	134	172	164	127	155	136	161	169	157	154	131	135	1,917
	Camden North	CPS	87	112	113	109	82	118	114	105	106	120	115	80	74	1,335
		CWS	29	41	47	31	35	50	24	34	25	41	44	26	33	460
		Total	116	153	160	140	117	168	138	139	131	161	159	106	107	1,795
	Camden South	CPS	78	88	108	74	85	89	79	75	100	113	86	72	85	1,132
		CWS	23	22	47	28	33	34	35	19	19	24	23	23	22	352
		Total	101	110	155	102	118	123	114	94	119	137	109	95	107	1,484
	County Totals	CPS	376	410	492	430	389	480	400	435	456	501	423	364	367	5,523
		CWS	116	120	183	146	146	154	126	124	106	142	141	108	118	1,730
		Total	492	530	675	576	535	634	526	559	562	643	564	472	485	7,253
CAPE MAY	Cape May	CPS	45	58	66	61	58	64	47	46	69	81	76	60	73	804
		CWS	19	10	20	23	19	18	26	22	26	19	21	20	12	255
		Total	64	68	86	84	77	82	73	68	95	100	97	80	85	1,059
	County Totals	CPS	45	58	66	61	58	64	47	46	69	81	76	60	73	804
		CWS	19	10	20	23	19	18	26	22	26	19	21	20	12	255
		Total	64	68	86	84	77	82	73	68	95	100	97	80	85	1,059
CUMBERLAND	Cumberland East	CPS	54	72	68	48	44	62	36	55	60	56	58	47	44	704
		CWS	23	19	27	13	22	16	17	18	18	17	15	15	13	233
		Total	77	91	95	61	66	78	53	73	78	73	73	62	57	937
	Cumberland West	CPS	103	118	117	113	101	146	92	126	146	146	111	82	118	1,519
		CWS	27	40	40	39	26	26	29	24	41	47	18	15	30	402
		Total	130	158	157	152	127	172	121	150	187	193	129	97	148	1,921
	County Totals	CPS	157	190	185	161	145	208	128	181	206	202	169	129	162	2,223
		CWS	50	59	67	52	48	42	46	42	59	64	33	30	43	635
		Total	207	249	252	213	193	250	174	223	265	266	202	159	205	2,858

Table 5: Monthly Count of CPS Reports and CWS Referrals Assigned to CP&P Local Offices

County	Local Office	Type of Referral	Month													Total
			Aug 2017	Sep 2017	Oct 2017	Nov 2017	Dec 2017	Jan 2018	Feb 2018	Mar 2018	Apr 2018	May 2018	Jun 2018	Jul 2018	Aug 2018	
ESSEX	Essex Central	CPS	78	79	121	108	79	93	77	107	103	113	95	70	92	1,215
		CWS	23	33	40	33	28	42	22	35	36	39	23	21	23	398
		Total	101	112	161	141	107	135	99	142	139	152	118	91	115	1,613
	Essex North	CPS	58	70	68	67	64	80	71	75	70	83	62	41	61	870
		CWS	18	23	35	31	25	25	21	34	24	24	35	18	15	328
		Total	76	93	103	98	89	105	92	109	94	107	97	59	76	1,198
	Essex South	CPS	53	58	69	68	72	83	64	63	83	65	92	46	76	892
		CWS	23	19	34	20	28	18	30	21	20	24	25	27	17	306
		Total	76	77	103	88	100	101	94	84	103	89	117	73	93	1198
	Newark Center City	CPS	75	89	110	98	104	107	86	105	88	105	91	75	81	1214
		CWS	37	30	29	34	18	34	35	34	38	42	33	26	26	416
		Total	112	119	139	132	122	141	121	139	126	147	124	101	107	1630
	Newark Northeast	CPS	90	94	99	106	76	107	97	97	99	104	81	71	84	1205
		CWS	18	29	44	34	30	44	39	44	38	40	42	24	35	461
		Total	108	123	143	140	106	151	136	141	137	144	123	95	119	1666
Newark South	CPS	75	80	116	93	103	116	111	116	128	138	106	95	76	1353	
	CWS	37	38	39	29	38	38	42	47	43	34	28	31	36	480	
	Total	112	118	155	122	141	154	153	163	171	172	134	126	112	1833	
County Totals	CPS	429	470	583	540	498	586	506	563	571	608	527	398	470	6749	
	CWS	156	172	221	181	167	201	189	215	199	203	186	147	152	2389	
	Total	585	642	804	721	665	787	695	778	770	811	713	545	622	9138	
GLOUCESTER	Gloucester East	CPS	91	79	102	89	96	94	85	79	113	118	79	75	76	1176
		CWS	25	33	28	34	30	35	22	24	41	26	18	20	31	367
		Total	116	112	130	123	126	129	107	103	154	144	97	95	107	1543
	Gloucester West	CPS	85	86	123	113	100	105	93	100	96	118	100	82	101	1302
		CWS	34	34	29	31	26	34	19	36	22	36	34	23	21	379
		Total	119	120	152	144	126	139	112	136	118	154	134	105	122	1681
	County Totals	CPS	176	165	225	202	196	199	178	179	209	236	179	157	177	2478
		CWS	59	67	57	65	56	69	41	60	63	62	52	43	52	746
		Total	235	232	282	267	252	268	219	239	272	298	231	200	229	3224
HUDSON	Hudson Central	CPS	52	69	71	87	83	103	88	98	115	131	93	83	89	1162
		CWS	26	35	34	41	38	46	37	36	36	56	57	38	39	519
		Total	78	104	105	128	121	149	125	134	151	187	150	121	128	1681
	Hudson North	CPS	42	72	76	83	87	75	77	92	98	79	62	34	51	928
		CWS	14	31	29	33	21	29	12	32	26	38	22	19	14	320
		Total	56	103	105	116	108	104	89	124	124	117	84	53	65	1248
	Hudson South	CPS	45	80	86	68	46	57	47	65	53	47	55	38	43	730
		CWS	21	27	39	17	19	26	19	24	15	18	19	16	17	277
		Total	66	107	125	85	65	83	66	89	68	65	74	54	60	1007
	Hudson West	CPS	66	74	87	104	89	74	80	80	80	102	72	72	59	1039
		CWS	24	30	30	21	35	29	26	39	31	38	32	30	30	395
		Total	90	104	117	125	124	103	106	119	111	140	104	102	89	1434
County Totals	CPS	205	295	320	342	305	309	292	335	346	359	282	227	242	3859	
	CWS	85	123	132	112	113	130	94	131	108	150	130	103	100	1511	
	Total	290	418	452	454	418	439	386	466	454	509	412	330	342	5370	
HUNTERDON	Hunterdon	CPS	32	46	40	30	44	43	36	42	47	44	43	37	40	524
		CWS	8	18	24	20	16	17	18	16	20	18	13	11	9	208
		Total	40	64	64	50	60	60	54	58	67	62	56	48	49	732
	County Totals	CPS	32	46	40	30	44	43	36	42	47	44	43	37	40	524
		CWS	8	18	24	20	16	17	18	16	20	18	13	11	9	208
Total		40	64	64	50	60	60	54	58	67	62	56	48	49	732	
MERCER	Mercer North	CPS	94	103	104	105	79	94	103	95	124	125	107	81	107	1321
		CWS	20	49	34	38	35	46	43	42	34	39	32	31	28	471
		Total	114	152	138	143	114	140	146	137	158	164	139	112	135	1792
	Mercer South	CPS	83	109	109	112	86	89	98	90	104	134	105	86	78	1283
		CWS	25	46	35	43	32	35	18	35	33	32	30	25	34	423
		Total	108	155	144	155	118	124	116	125	137	166	135	111	112	1706
	County Totals	CPS	177	212	213	217	165	183	201	185	228	259	212	167	185	2604
		CWS	45	95	69	81	67	81	61	77	67	71	62	56	62	894
Total		222	307	282	298	232	264	262	262	295	330	274	223	247	3498	

Data in this report is preliminary and may differ from any final report. This report is produced to ensure continuous quality improvement throughout DCF.

Table 5: Monthly Count of CPS Reports and CWS Referrals Assigned to CP&P Local Offices

County	Local Office	Type of Referral	Month													Total
			Aug 2017	Sep 2017	Oct 2017	Nov 2017	Dec 2017	Jan 2018	Feb 2018	Mar 2018	Apr 2018	May 2018	Jun 2018	Jul 2018	Aug 2018	
MIDDLESEX	Middlesex Central	CPS	44	99	102	115	87	139	96	118	104	118	101	78	62	1263
		CWS	17	36	41	35	35	40	35	29	36	29	36	32	28	429
		Total	61	135	143	150	122	179	131	147	140	147	137	110	90	1692
	Middlesex Coastal	CPS	75	112	142	124	121	127	124	125	128	144	123	111	100	1556
		CWS	28	41	51	53	33	51	28	45	36	52	42	24	37	521
		Total	103	153	193	177	154	178	152	170	164	196	165	135	137	2077
	Middlesex West	CPS	62	112	141	140	106	132	134	148	128	146	128	83	88	1548
		CWS	31	20	56	58	37	51	46	33	41	45	44	30	51	543
		Total	93	132	197	198	143	183	180	181	169	191	172	113	139	2091
	County Totals	CPS	181	323	385	379	314	398	354	391	360	408	352	272	250	4367
CWS		76	97	148	146	105	142	109	107	113	126	122	86	116	1493	
Total		257	420	533	525	419	540	463	498	473	534	474	358	366	5860	
MONMOUTH	Monmouth North	CPS	103	139	173	152	125	160	167	162	149	174	152	118	107	1881
		CWS	32	38	54	54	44	61	60	58	56	61	34	36	36	624
		Total	135	177	227	206	169	221	227	220	205	235	186	154	143	2505
	Monmouth South	CPS	97	120	161	133	114	150	123	159	137	160	113	112	91	1670
		CWS	32	52	54	42	44	42	34	48	34	51	42	36	43	554
		Total	129	172	215	175	158	192	157	207	171	211	155	148	134	2224
	County Totals	CPS	200	259	334	285	239	310	290	321	286	334	265	230	198	3551
		CWS	64	90	108	96	88	103	94	106	90	112	76	72	79	1178
		Total	264	349	442	381	327	413	384	427	376	446	341	302	277	4729
MORRIS	Morris East	CPS	52	60	81	86	66	96	64	73	71	94	66	79	74	962
		CWS	26	35	36	38	31	40	32	34	32	29	25	24	20	402
		Total	78	95	117	124	97	136	96	107	103	123	91	103	94	1364
	Morris West	CPS	64	85	112	99	88	86	63	97	103	107	77	75	74	1130
		CWS	26	36	61	27	34	47	32	41	34	26	31	26	18	439
		Total	90	121	173	126	122	133	95	138	137	133	108	101	92	1569
	County Totals	CPS	116	145	193	185	154	182	127	170	174	201	143	154	148	2092
		CWS	52	71	97	65	65	87	64	75	66	55	56	50	38	841
		Total	168	216	290	250	219	269	191	245	240	256	199	204	186	2933
OCEAN	Ocean North	CPS	121	134	179	181	168	163	133	161	167	166	144	163	143	2023
		CWS	46	37	52	45	36	56	43	44	40	69	51	34	38	591
		Total	167	171	231	226	204	219	176	205	207	235	195	197	181	2614
	Ocean South	CPS	130	129	144	142	121	159	146	174	146	149	167	124	135	1866
		CWS	54	42	47	50	31	33	42	41	44	43	36	36	55	554
		Total	184	171	191	192	152	192	188	215	190	192	203	160	190	2420
	County Totals	CPS	251	263	323	323	289	322	279	335	313	315	311	287	278	3889
		CWS	100	79	99	95	67	89	85	85	84	112	87	70	93	1145
		Total	351	342	422	418	356	411	364	420	397	427	398	357	371	5034
PASSAIC	Passaic Central	CPS	128	172	228	199	155	173	171	171	178	243	163	108	128	2217
		CWS	40	60	90	76	78	65	75	74	62	87	54	43	51	855
		Total	168	232	318	275	233	238	246	245	240	330	217	151	179	3072
	Passaic North	CPS	104	130	176	158	131	134	135	166	152	185	143	104	147	1865
		CWS	47	63	82	80	57	79	75	58	56	56	63	52	57	825
		Total	151	193	258	238	188	213	210	224	208	241	206	156	204	2690
	County Totals	CPS	232	302	404	357	286	307	306	337	330	428	306	212	275	4082
		CWS	87	123	172	156	135	144	150	132	118	143	117	95	108	1680
		Total	319	425	576	513	421	451	456	469	448	571	423	307	383	5762
SALEM	Salem	CPS	45	82	67	77	58	68	56	79	77	73	62	52	56	852
		CWS	9	20	16	23	22	22	12	20	15	17	17	13	21	227
		Total	54	102	83	100	80	90	68	99	92	90	79	65	77	1079
	County Totals	CPS	45	82	67	77	58	68	56	79	77	73	62	52	56	852
		CWS	9	20	16	23	22	22	12	20	15	17	17	13	21	227
Total	54	102	83	100	80	90	68	99	92	90	79	65	77	1079		
SOMERSET	Somerset	CPS	83	97	136	130	119	119	127	115	140	136	155	106	93	1556
		CWS	34	30	30	39	53	37	30	64	34	44	34	35	35	499
		Total	117	127	166	169	172	156	157	179	174	180	189	141	128	2055
	County Totals	CPS	83	97	136	130	119	119	127	115	140	136	155	106	93	1556
		CWS	34	30	30	39	53	37	30	64	34	44	34	35	35	499
Total	117	127	166	169	172	156	157	179	174	180	189	141	128	2055		

Table 5: Monthly Count of CPS Reports and CWS Referrals Assigned to CP&P Local Offices

County	Local Office	Type of Referral														Total
			Aug 2017	Sep 2017	Oct 2017	Nov 2017	Dec 2017	Jan 2018	Feb 2018	Mar 2018	Apr 2018	May 2018	Jun 2018	Jul 2018	Aug 2018	
SUSSEX	Sussex	CPS	67	69	80	86	70	85	64	70	90	87	94	62	60	984
		CWS	25	23	26	25	22	41	26	32	34	25	24	20	22	345
		Total	92	92	106	111	92	126	90	102	124	112	118	82	82	1329
	County Totals	CPS	67	69	80	86	70	85	64	70	90	87	94	62	60	984
		CWS	25	23	26	25	22	41	26	32	34	25	24	20	22	345
		Total	92	92	106	111	92	126	90	102	124	112	118	82	82	1329
UNION	Union Central	CPS	72	68	74	84	91	88	89	87	88	98	78	67	54	1038
		CWS	21	40	31	18	19	30	36	29	25	28	25	23	21	346
		Total	93	108	105	102	110	118	125	116	113	126	103	90	75	1384
	Union East	CPS	69	91	88	91	75	102	91	98	74	89	92	63	48	1071
		CWS	15	31	39	26	29	26	32	33	26	27	32	24	21	361
		Total	84	122	127	117	104	128	123	131	100	116	124	87	69	1432
	Union West	CPS	51	86	88	88	83	77	84	83	81	98	91	58	54	1022
		CWS	18	29	33	36	27	38	34	22	27	39	25	25	23	376
		Total	69	115	121	124	110	115	118	105	108	137	116	83	77	1398
	County Totals	CPS	192	245	250	263	249	267	264	268	243	285	261	188	156	3131
		CWS	54	100	103	80	75	94	102	84	78	94	82	72	65	1083
		Total	246	345	353	343	324	361	366	352	321	379	343	260	221	4214
WARREN	Warren	CPS	50	83	98	69	50	75	72	85	88	93	85	59	82	989
		CWS	19	34	33	33	22	19	29	32	20	24	25	28	23	341
		Total	69	117	131	102	72	94	101	117	108	117	110	87	105	1330
	County Totals	CPS	50	83	98	69	50	75	72	85	88	93	85	59	82	989
		CWS	19	34	33	33	22	19	29	32	20	24	25	28	23	341
		Total	69	117	131	102	72	94	101	117	108	117	110	87	105	1330
County CPS Referral Total		CPS	3,598	4,407	5,202	4,876	4,302	4,955	4,392	4,908	4,929	5,469	4,611	3,755	3,825	59,229
County CWS Referral Total		CWS	1,266	1,583	1,889	1,713	1,543	1,740	1,523	1,668	1,550	1,764	1,554	1,253	1,355	20,401
County Referral Total		Total	4,864	5,990	7,091	6,589	5,845	6,695	5,915	6,576	6,479	7,233	6,165	5,008	5,180	79,630
Central Region IAIU	CPS	55	54	68	73	55	62	58	63	62	89	64	40	57	800	
	CWS	0	0	0	0	0	0	0	0	0	0	0	0	0	0	
	Total	55	54	68	73	55	62	58	63	62	89	64	40	57	800	
Metro Region IAIU	CPS	25	41	58	48	56	54	63	48	52	78	60	40	38	661	
	CWS	0	0	0	0	0	0	0	0	0	0	0	0	0	0	
	Total	25	41	58	48	56	54	63	48	52	78	60	40	38	661	
Northern Region IAIU	CPS	34	51	70	58	54	60	53	53	69	88	60	42	34	726	
	CWS	0	0	0	0	0	0	0	0	0	0	0	0	0	0	
	Total	34	51	70	58	54	60	53	53	69	88	60	42	34	726	
Southern Region IAIU	CPS	63	66	102	77	84	90	75	74	86	95	71	61	76	1,020	
	CWS	0	0	0	0	0	0	0	0	0	0	0	0	0	0	
	Total	63	66	102	77	84	90	75	74	86	95	71	61	76	1,020	
IAIU CPS Subtotal		CPS	177	212	298	256	249	266	249	238	269	350	255	183	205	3,207
IAIU CWS Subtotal		CWS	0	0	0	0	0	0	0	0	0	0	0	0	0	0
IAIU Subtotal		Total	177	212	298	256	249	266	249	238	269	350	255	183	205	3,207
County and IAIU CPS Subtotal		CPS	3,775	4,619	5,500	5,132	4,551	5,221	4,641	5,146	5,198	5,819	4,866	3,938	4,030	62,436
County and IAIU CWS Subtotal		CWS	1,266	1,583	1,889	1,713	1,543	1,740	1,523	1,668	1,550	1,764	1,554	1,253	1,355	20,401
Unable to Determine ⁽¹⁾		Total	163	158	187	129	98	94	407	122	125	169	137	128	122	2,039
Other Offices		Total	2	2	3	2	3	5	6	3	3	4	6	0	3	42
Grand Total		Total	5,206	6,362	7,579	6,976	6,195	7,060	6,577	6,939	6,876	7,756	6,563	5,319	5,510	84,918

⁽¹⁾CPS Reports or CWS Referrals not assigned to an office through the Assignment Designee, but were assigned to an office for an assessment or investigation.