



Child Protection and Permanency

Monthly Screening and Investigation Report August 2020

Christine Norbut Beyer, MSW
Commissioner



Table of Contents

Table 1: NJ State Central Registry Activity: Monthly Child Abuse and Neglect Hotline Calls, Intakes and Assignments to Child Protection & Permanency (CP&P) Offices

Chart 1: CP&P Annual Trends in Child Protection Services (CPS) Reports and Child Welfare Services (CWS) Referrals

Table 2: Assignments to CP&P Offices: CPS Reports and CWS Referrals

Table 3: Source of CPS Reports and CWS Referrals

Table 4: Monthly Count of CPS Reports and CWS Referrals Assigned to Counties

Table 5: Monthly Count of CPS Reports and CWS Referrals Assigned to CP&P Local Offices

Table 1: NJ State Central Registry Activity: Monthly Child Abuse and Neglect Hotline Calls, Intakes and Assignments to CP&P Offices^{1,2,7}

2019-2020	Hotline Call Activity				Intakes Recorded in NJ SPIRIT ^{6,8}														Assignments to CP&P Offices				
	Total Calls to SCR ³	Abandon Calls ⁴	Average Time to Answer (seconds)	Resulting NJS Intakes ⁵	CPS Reports		CWS Referrals		No Action Required (NAR)		Related Information (RI)		Information & Referral (I&R)		Information Only (IO)		Unusual Incident (UIRS)		CPS Reports		CWS Referrals		Total
					n	%	n	%	n	%	n	%	n	%	n	%	n	%	n	%	n	%	
August 2019	11,044	482	38	12,291	4,068	33.1%	1,303	10.6%	222	1.8%	3,113	25.3%	1,381	11.2%	2,204	17.9%	0	17.9%	4,068	75.7%	1,306	24.3%	5,374
September 2019	13,737	991	72	14,995	5,315	35.4%	1,551	10.3%	266	1.8%	3,695	24.6%	1,790	11.9%	2,378	15.9%	0	15.9%	5,315	77.4%	1,551	22.6%	6,866
October 2019	15,981	1,270	95	16,503	5,968	36.2%	1,923	11.7%	260	1.6%	4,039	24.5%	1,959	11.9%	2,354	14.3%	0	14.3%	5,968	75.6%	1,926	24.4%	7,894
November 2019	12,937	1,128	92	14,799	4,991	33.7%	1,434	9.7%	205	1.4%	3,681	24.9%	1,741	11.8%	2,747	18.6%	0	18.6%	4,991	77.7%	1,432	22.3%	6,423
December 2019	12,832	1,147	102	13,166	4,855	36.9%	1,432	10.9%	203	1.5%	3,204	24.3%	1,478	11.2%	1,994	15.1%	0	15.1%	4,855	77.2%	1,434	22.8%	6,289
January 2020	15,893	2,070	141	15,573	5,715	36.7%	1,841	11.8%	227	1.5%	3,717	23.9%	1,976	12.7%	2,097	13.5%	0	13.5%	5,715	75.6%	1,842	24.4%	7,557
February 2020	14,714	1,744	150	14,684	5,380	36.6%	1,625	11.1%	226	1.5%	3,605	24.6%	1,854	12.6%	1,994	13.6%	0	0.0%	5,380	76.8%	1,624	23.2%	7,004
March 2020	12,263	1,262	11	12,398	4,171	33.6%	1,063	8.6%	199	1.6%	3,075	24.8%	1,885	15.2%	2,005	16.2%	5	0.0%	4,172	79.7%	1,065	20.3%	5,237
April 2020	7,500	548	76	7,917	2,149	27.1%	407	5.1%	196	2.5%	1,852	23.4%	1,866	23.6%	1,447	18.3%	0	0.0%	2,149	84.1%	407	15.9%	2,556
May 2020	9,654	1,808	249	9,402	2,897	30.8%	537	5.7%	137	1.5%	2,342	24.9%	1,974	21.0%	1,515	16.1%	0	0.0%	2,897	84.4%	537	15.6%	3,434
June 2020	10,871	3,782	305	9,131	3,045	33.3%	636	7.0%	133	1.5%	2,281	25.0%	1,554	17.0%	1,482	16.2%	0	0.0%	3,045	82.7%	636	17.3%	3,681
July 2020	11,649	1,628	237	11,499	3,628	31.6%	738	6.4%	145	1.3%	2,892	25.2%	1,815	15.8%	2,281	19.8%	0	0.0%	3,628	83.1%	738	16.9%	4,366
August 2020	11,248	1,493	232	11,204	3,569	31.9%	821	7.3%	164	1.5%	2,993	26.7%	1,649	14.7%	2,008	17.9%	0	0.0%	3,569	81.3%	822	18.7%	4,391
	12,333	1,489	138	12,582	4,289	34.1%	1,178	9.4%	199	1.6%	3,115	24.8%	1,763	14.0%	2,039	16.2%	0	0.0%	4,289	78.4%	1,178	21.6%	5,467
Overall Total	160,323	19,353		163,562	55,751		15,311		2,583		40,489		22,922		26,506		5		55,752	78.4%	15,320	21.6%	71,072

¹Comes from three distinct sources: (1) the Automatic Call Distribution (ACD) phone system; which keeps a count of the number of calls and call routing; (2) Monthly NJSpirit Intakes; which record decision making on calls received by hotline screeners, and (3) NJSpirit extracts of assigned CWS Referrals and CPS Reports.

²The number of Intakes, CPS Reports, and CWS Referrals are based on an extract from NJSpirit.

Data extracted by the Office of Research, Evaluation, and Reporting on **September 08, 2020** includes all Intakes, CPS Reports, and CWS Referrals received from **August 01, 2020** through **August 31, 2020**.

³The number calls received through the ACD System that were directed to a screener from any call-in phone number.

⁴The number of calls received through the ACD System that are abandoned either while waiting in queue or while ringing.

⁵The number of Intakes entered in NJSpirit from the number of calls received.

⁶The number of Intakes recorded in NJSpirit, by type of Intake. There is not a one-to-one relationship between an ACD call and an Intake; multiple calls to State Central Registry (SCR) may result in a single Intake, or one call may result in multiple Intakes.

⁷Intake: The process of documenting: a report of alleged abuse or neglect of a child (CPS); a request for services on behalf of a child, or a referral of a child for services (CWS); a call in which the caller provides additional or clarifying information about a current service case or active investigation (RI); informing a caller of, or referring a caller to, services available from other private or public sources (I&R); a call that requires no action by CP&P (NAR); or a response to a simple inquiry (IO).

CP&P Annual Trends in CPS Reports and CWS Referrals

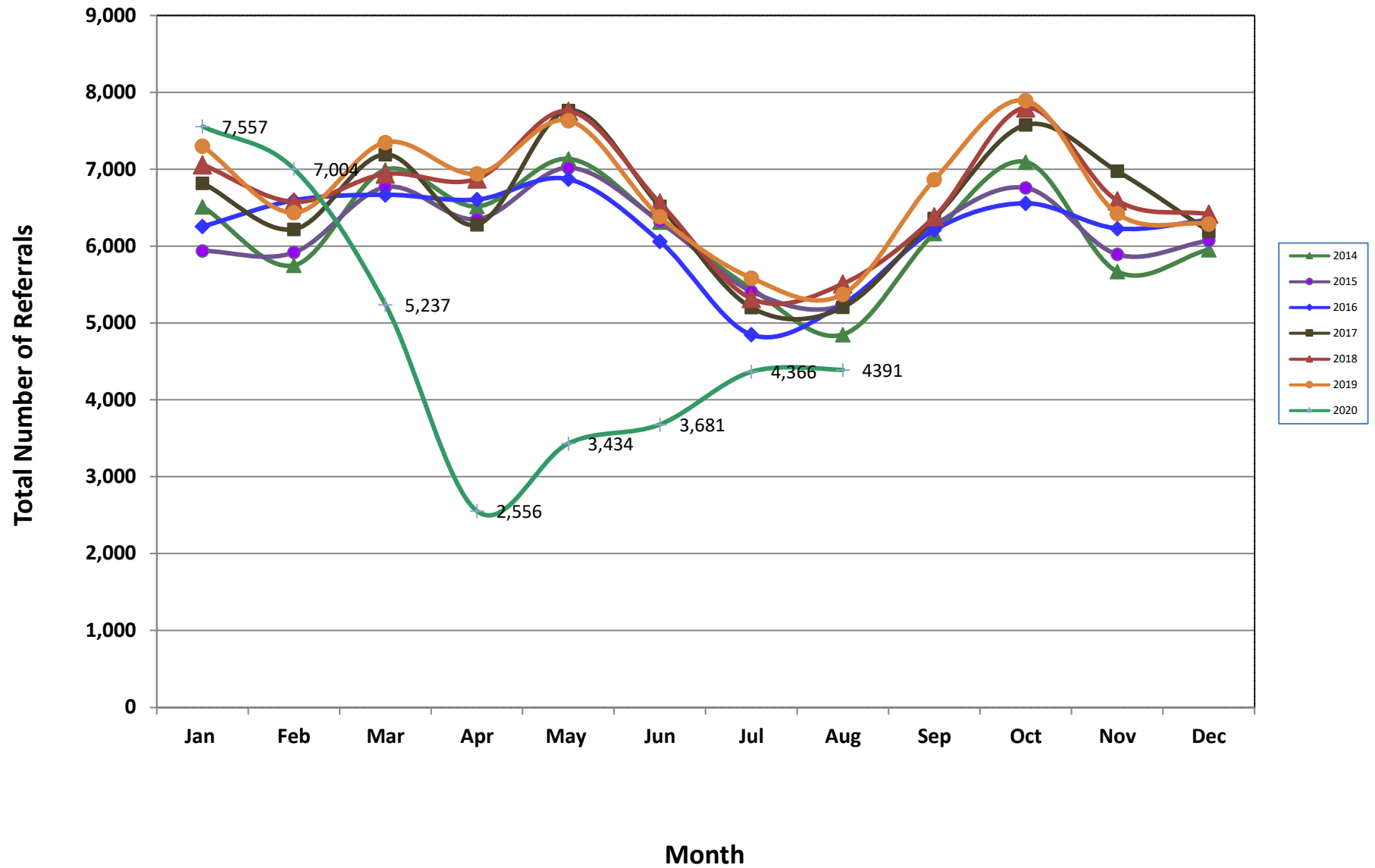


Table 2: Assignments to CP&P Offices: CPS Reports and CWS Referrals¹

Intake Date ³		CPS Reports ²	CWS Referrals ²	Total Assignments ²
2015	Jan 2015	4,549	1,391	5,940
	Feb 2015	4,574	1,345	5,919
	Mar 2015	5,187	1,580	6,767
	Apr 2015	4,967	1,384	6,351
	May 2015	5,457	1,561	7,018
	Jun 2015	4,887	1,436	6,323
	Jul 2015	4,140	1,273	5,413
	Aug 2015	3,978	1,256	5,234
	Sep 2015	4,776	1,495	6,271
	Oct 2015	5,139	1,619	6,758
	Nov 2015	4,417	1,477	5,894
	Dec 2015	4,530	1,544	6,074
	Total	56,601	17,361	73,962
2016	Jan 2016	4,686	1,571	6,257
	Feb 2016	4,974	1,622	6,596
	Mar 2016	5,000	1,669	6,669
	Apr 2016	5,065	1,542	6,607
	May 2016	5,238	1,633	6,871
	Jun 2016	4,602	1,461	6,063
	Jul 2016	3,663	1,187	4,850
	Aug 2016	3,941	1,307	5,248
	Sep 2016	4,654	1,559	6,213
	Oct 2016	4,935	1,622	6,557
	Nov 2016	4,677	1,552	6,229
	Dec 2016	4,762	1,580	6,342
	Total	56,197	18,305	74,502
2017	Jan 2017	5,111	1,708	6,819
	Feb 2017	4,716	1,504	6,220
	Mar 2017	5,349	1,843	7,192
	Apr 2017	4,790	1,490	6,280
	May 2017	5,847	1,919	7,766
	Jun 2017	4,853	1,665	6,518
	Jul 2017	3,814	1,389	5,203
	Aug 2017	3,866	1,340	5,206
	Sep 2017	4,719	1,643	6,362
	Oct 2017	5,613	1,966	7,579
	Nov 2017	5,223	1,753	6,976
	Dec 2017	4,601	1,594	6,195
	Total	58,502	19,814	78,316

Table 2: Assignments to CP&P Offices: CPS Reports and CWS Referrals¹

Intake Date ³		CPS Reports ²	CWS Referrals ²	Total Assignments ²
2018	Jan 2018	5,276	1,784	7,060
	Feb 2018	4,933	1,644	6,577
	Mar 2018	5,212	1,727	6,939
	Apr 2018	5,275	1,601	6,876
	May 2018	5,920	1,836	7,756
	Jun 2018	4,948	1,615	6,563
	Jul 2018	4,011	1,308	5,319
	Aug 2018	4,102	1,408	5,510
	Sep 2018	4,748	1,634	6,382
	Oct 2018	5,790	2,011	7,801
	Nov 2018	4,973	1,620	6,593
	Dec 2018	4,891	1,527	6,418
	Total	60,079	19,715	79,794
2019	Jan 2019	5,443	1,858	7,301
	Feb 2019	4,811	1,628	6,439
	Mar 2019	5,677	1,824	7,501
	Apr 2019	5,313	1,630	6,943
	May 2019	5,853	1,781	7,634
	Jun 2019	4,874	1,509	6,383
	Jul 2019	4,277	1,309	5,586
	Aug 2019	4,068	1,306	5,374
	Sep 2019	5,315	1,551	6,866
	Oct 2019	5,968	1,926	7,894
	Nov 2019	4,991	1,432	6,423
	Dec 2019	4,855	1,434	6,289
	Total	61,445	1,434	6,289
2020	Jan 2020	5,715	1,842	7,557
	Feb 2020	5,380	1,624	7,004
	Mar 2020	4,172	1,065	5,237
	Apr 2020	2,149	407	2,556
	May 2020	2,897	537	3,434
	Jun 2020	3,045	636	3,681
	Jul 2020	3,628	738	4,366
	Aug 2020	3,569	822	4,391
	Total	30,555	7,671	38,226
Grand Total		323,379	102,054	425,433

Table 3: Source of CPS Reports and CWS Referrals

CPS Reports and CWS Referrals	Source	Aug 2019	Sep 2019	Oct 2019	Nov 2019	Dec 2019	Jan 2020	Feb 2020	Mar 2020	Apr 2020	May 2020	Jun 2020	Jul 2020	Aug 2020		13 Month Total	
	School Staff	90	1,479	2,314	1,703	1,562	2,327	2,148	1,188	143	210	119	70	63	1%	13,416	19%
	Healthcare Provider	917	963	1,059	886	923	990	937	760	499	656	775	784	819	19%	10,968	15%
	Law Enforcement	1,320	1,432	1,425	1,260	1,247	1,295	1,349	1,197	792	1,086	1,140	1,440	1,372	31%	16,355	23%
	Government Agency	391	417	457	343	367	452	342	240	134	198	238	274	304	7%	4,157	6%
	Parent	583	534	529	425	448	509	435	395	219	281	326	400	395	9%	5,479	8%
	Relative/Friend/Neighbor	479	505	427	384	388	411	334	345	232	296	326	392	343	8%	4,862	7%
	Anonymous	544	615	674	556	508	600	603	437	222	284	294	416	425	10%	6,178	9%
	CP&P	129	102	110	82	89	106	74	67	28	31	42	47	104	2%	1,011	1%
	Court/Legal	223	180	207	160	158	210	162	104	40	59	50	80	81	2%	1,714	2%
	Community Group/Individual	268	257	310	287	227	317	279	199	111	143	157	193	171	4%	2,919	4%
	Facility Staff (incl Correctional Facility)	92	74	79	67	83	79	93	40	21	41	43	63	61	1%	836	1%
	Child (Self)	47	45	34	27	37	28	21	25	7	17	17	25	29	1%	359	1%
	Other	272	249	250	235	242	213	210	227	105	130	149	175	219	5%	2,676	4%
	Daycare/Babysitter	19	14	19	8	10	20	17	13	3	2	5	7	5	0%	142	0%
Total	5,374	6,866	7,894	6,423	6,289	7,557	7,004	5,237	2,556	3,434	3,681	4,366	4,391		71,072		

Table 4: Monthly Count of CPS Reports and CWS Referrals Assigned to Counties

County														Average Number of Assignments Last 13 Months	Jul 20 to Aug 20 Numerical Difference
	Aug 2019	Sep 2019	Oct 2019	Nov 2019	Dec 2019	Jan 2020	Feb 2020	Mar 2020	Apr 2020	May 2020	Jun 2020	Jul 2020	Aug 2020		
Atlantic	235	282	302	258	261	292	298	244	121	161	180	214	195	234	-19
Bergen	285	402	471	423	375	457	418	281	145	189	194	232	233	316	1
Burlington	264	352	385	305	285	383	368	256	133	181	185	231	237	274	6
Camden	422	572	625	523	508	603	581	437	216	305	325	362	345	448	-17
Cape May	80	112	105	78	78	85	58	70	33	50	66	72	65	73	-7
Cumberland	158	206	256	216	221	238	216	171	96	116	130	145	131	177	-14
Essex	622	713	848	703	651	790	735	525	249	364	366	440	486	576	46
Gloucester	232	259	279	271	266	285	297	221	111	160	177	198	192	227	-6
Hudson	307	400	535	437	415	558	449	347	137	226	199	282	268	351	-14
Hunterdon	48	74	60	63	66	67	48	39	22	30	24	33	40	47	7
Mercer	265	276	337	290	267	344	279	210	106	144	164	197	187	236	-10
Middlesex	357	489	558	426	488	580	475	405	205	231	283	310	321	394	11
Monmouth	287	378	437	350	349	411	381	301	166	196	233	263	267	309	4
Morris	187	266	255	226	212	264	273	194	85	124	137	152	150	194	-2
Ocean	337	428	525	387	406	482	446	355	177	257	264	336	278	360	-58
Passaic	327	443	519	390	409	456	460	353	143	213	219	267	250	342	-17
Salem	85	92	98	78	69	79	82	75	35	44	53	56	48	69	-8
Somerset	114	180	202	155	146	197	189	126	66	92	82	114	101	136	-13
Sussex	107	125	129	91	104	114	116	73	47	48	51	86	73	90	-13
Union	252	321	400	345	327	383	383	246	137	147	190	181	225	272	44
Warren	88	97	96	93	82	98	101	65	54	50	56	75	77	79	2
County Subtotals	5,059	6,467	7,422	6,108	5,985	7,166	6,653	4,994	2,484	3,328	3,578	4,246	4,169	5,205	-77
Central Region IAIU	41	60	70	49	48	67	64	34	10	6	23	17	17	39	0
Metro Region IAIU	42	43	80	45	41	46	69	33	3	11	2	13	13	34	0
Northern Region IAIU	37	68	77	45	45	59	42	44	6	12	10	14	12	36	-2
Southern Region IAIU	57	83	75	59	62	82	61	51	12	18	20	23	30	49	7
IAIU Subtotals	177	254	302	198	196	254	236	162	31	47	55	67	72	158	5
¹ Unable to Determine	138	145	170	117	108	135	113	79	39	59	48	51	149	104	98
Other Offices	0	0	0	0	0	2	2	2	2	0	0	2	1	1	-1
Grand Total	5,374	6,866	7,894	6,423	6,289	7,557	7,004	5,237	2,556	3,434	3,681	4,366	4,391	5,467	25

¹CPS Reports or CWS Referrals not assigned to an office through the Assignment Designee, but were assigned to an office for an assessment or investigation.



Table 5: Monthly Count of CPS Reports and CWS Referrals Assigned to CP&P Local Offices

County	Local Office	Type of Referral														Total
			Aug 2019	Sep 2019	Oct 2019	Nov 2019	Dec 2019	Jan 2020	Feb 2020	Mar 2020	Apr 2020	May 2020	Jun 2020	Jul 2020	Aug 2020	
ATLANTIC	Atlantic East	CPS	102	127	134	117	133	120	116	115	55	70	82	96	100	1,367
		CWS	30	46	38	26	31	33	55	30	9	16	25	24	22	385
		Total	132	173	172	143	164	153	171	145	64	86	107	120	122	1,752
	Atlantic West	CPS	77	76	86	99	79	101	95	82	50	64	57	75	64	1,005
		CWS	26	33	44	16	18	38	32	17	7	11	16	19	9	286
		Total	103	109	130	115	97	139	127	99	57	75	73	94	73	1,291
	County Totals	CPS	179	203	220	216	212	221	211	197	105	134	139	171	164	2,372
		CWS	56	79	82	42	49	71	87	47	16	27	41	43	31	671
		Total	235	282	302	258	261	292	298	244	121	161	180	214	195	3,043
BERGEN	Bergen Central	CPS	98	131	150	137	102	145	135	81	55	66	66	85	85	1,336
		CWS	31	46	57	47	51	57	47	24	12	13	21	14	12	432
		Total	129	177	207	184	153	202	182	105	67	79	87	99	97	1,768
	Bergen South	CPS	117	166	192	174	171	182	179	126	67	90	92	104	118	1,778
		CWS	39	59	72	65	51	73	57	50	11	20	15	29	18	559
		Total	156	225	264	239	222	255	236	176	78	110	107	133	136	2,337
	County Totals	CPS	215	297	342	311	273	327	314	207	122	156	158	189	203	3,114
		CWS	70	105	129	112	102	130	104	74	23	33	36	43	30	991
		Total	285	402	471	423	375	457	418	281	145	189	194	232	233	4,105
BURLINGTON	Burlington East	CPS	108	126	145	114	109	147	142	99	55	74	95	80	101	1,395
		CWS	38	55	39	44	48	50	40	22	12	17	11	29	17	422
		Total	146	181	184	158	157	197	182	121	67	91	106	109	118	1,817
	Burlington West	CPS	92	133	153	113	96	143	141	106	51	76	68	99	95	1,366
		CWS	26	38	48	34	32	43	45	29	15	14	11	23	24	382
		Total	118	171	201	147	128	186	186	135	66	90	79	122	119	1,748
	County Totals	CPS	200	259	298	227	205	290	283	205	106	150	163	179	196	2,761
		CWS	64	93	87	78	80	93	85	51	27	31	22	52	41	804
		Total	264	352	385	305	285	383	368	256	133	181	185	231	237	3,565
CAMDEN	Camden Central	CPS	106	127	122	100	118	112	119	99	40	68	86	74	69	1,240
		CWS	22	27	40	28	24	43	29	14	12	11	15	21	18	304
		Total	128	154	162	128	142	155	148	113	52	79	101	95	87	1,544
	Camden East	CPS	70	103	111	114	100	94	102	82	45	54	59	67	78	1,079
		CWS	15	34	30	31	30	44	32	16	7	8	14	18	15	294
		Total	85	137	141	145	130	138	134	98	52	62	73	85	93	1,373
	Camden North	CPS	84	111	135	101	84	119	117	96	39	56	71	81	63	1,157
		CWS	25	47	40	37	26	31	28	26	9	15	12	13	18	327
		Total	109	158	175	138	110	150	145	122	48	71	83	94	81	1,484
	Camden South	CPS	68	91	113	88	96	125	122	82	54	73	59	71	67	1,109
		CWS	32	32	34	24	30	35	32	22	10	20	9	17	17	314
		Total	100	123	147	112	126	160	154	104	64	93	68	88	84	1,423
	County Totals	CPS	328	432	481	403	398	450	460	359	178	251	275	293	277	4,585
		CWS	94	140	144	120	110	153	121	78	38	54	50	69	68	1,239
		Total	422	572	625	523	508	603	581	437	216	305	325	362	345	5,824
CAPE MAY	Cape May	CPS	67	87	75	63	62	68	42	56	29	37	55	58	52	751
		CWS	13	25	30	15	16	17	16	14	4	13	11	14	13	201
		Total	80	112	105	78	78	85	58	70	33	50	66	72	65	952
	County Totals	CPS	67	87	75	63	62	68	42	56	29	37	55	58	52	751
		CWS	13	25	30	15	16	17	16	14	4	13	11	14	13	201
Total	80	112	105	78	78	85	58	70	33	50	66	72	65	952		
CUMBERLAND	Cumberland East	CPS	50	51	59	47	61	57	52	44	24	40	44	37	43	609
		CWS	13	9	16	19	9	11	12	11	10	8	6	6	6	136
		Total	63	60	75	66	70	68	64	55	34	48	50	43	49	745
	Cumberland West	CPS	75	118	139	119	126	141	121	91	53	56	66	91	70	1,266
		CWS	20	28	42	31	25	29	31	25	9	12	14	11	12	289
		Total	95	146	181	150	151	170	152	116	62	68	80	102	82	1,555
	County Totals	CPS	125	169	198	166	187	198	173	135	77	96	110	128	113	1,875
		CWS	33	37	58	50	34	40	43	36	19	20	20	17	18	425
		Total	158	206	256	216	221	238	216	171	96	116	130	145	131	2,300

Data in this report is preliminary and may differ from any final report. This report is produced to ensure continuous quality improvement throughout DCF.



Table 5: Monthly Count of CPS Reports and CWS Referrals Assigned to CP&P Local Offices

County	Local Office	Type of Referral														Total
			Aug 2019	Sep 2019	Oct 2019	Nov 2019	Dec 2019	Jan 2020	Feb 2020	Mar 2020	Apr 2020	May 2020	Jun 2020	Jul 2020	Aug 2020	
ESSEX	Essex Central	CPS	88	111	121	96	98	106	99	71	58	60	58	61	67	1,094
		CWS	25	32	48	32	28	35	36	21	6	8	8	20	17	316
		Total	113	143	169	128	126	141	135	92	64	68	66	81	84	1,410
	Essex North	CPS	58	65	79	75	63	78	92	50	24	28	39	47	42	740
		CWS	31	27	24	23	22	30	26	19	2	18	8	9	9	248
		Total	89	92	103	98	85	108	118	69	26	46	47	56	51	988
	Essex South	CPS	46	66	66	83	71	87	64	65	22	32	46	40	54	742
		CWS	26	20	35	24	21	25	24	14	7	7	10	11	16	240
		Total	72	86	101	107	92	112	88	79	29	39	56	51	70	982
	Newark Center City	CPS	95	101	118	83	93	121	114	74	33	59	53	73	69	1086
		CWS	23	36	35	30	35	29	33	17	8	12	6	16	12	292
		Total	118	137	153	113	128	150	147	91	41	71	59	89	81	1378
	Newark Northeast	CPS	77	94	116	98	74	97	95	77	38	47	55	58	62	988
		CWS	22	28	35	27	19	35	25	19	7	5	17	15	17	271
		Total	99	122	151	125	93	132	120	96	45	52	72	73	79	1259
Newark South	CPS	90	104	134	107	95	120	94	74	38	69	50	72	93	1140	
	CWS	41	29	37	25	32	27	33	24	6	19	16	18	28	335	
	Total	131	133	171	132	127	147	127	98	44	88	66	90	121	1475	
County Totals	CPS	454	541	634	542	494	609	558	411	213	295	301	351	387	5790	
	CWS	168	172	214	161	157	181	177	114	36	69	65	89	99	1702	
	Total	622	713	848	703	651	790	735	525	249	364	366	440	486	7492	
GLOUCESTER	Gloucester East	CPS	92	98	109	94	102	111	110	90	47	67	71	79	75	1145
		CWS	21	19	25	28	24	26	32	16	9	7	14	15	15	251
		Total	113	117	134	122	126	137	142	106	56	74	85	94	90	1396
	Gloucester West	CPS	85	120	114	122	107	116	117	88	45	76	75	87	88	1240
		CWS	34	22	31	27	33	32	38	27	10	10	17	17	14	312
		Total	119	142	145	149	140	148	155	115	55	86	92	104	102	1552
	County Totals	CPS	177	218	223	216	209	227	227	178	92	143	146	166	163	2385
CWS		55	41	56	55	57	58	70	43	19	17	31	32	29	563	
Total		232	259	279	271	266	285	297	221	111	160	177	198	192	2948	
HUDSON	Hudson Central	CPS	94	90	122	112	103	141	99	88	37	69	62	81	74	1172
		CWS	22	35	41	37	26	48	37	32	12	12	19	21	19	361
		Total	116	125	163	149	129	189	136	120	49	81	81	102	93	1533
	Hudson North	CPS	36	78	97	82	67	85	85	66	23	42	34	56	46	797
		CWS	22	20	29	26	23	33	25	15	10	13	12	14	15	257
		Total	58	98	126	108	90	118	110	81	33	55	46	70	61	1054
	Hudson South	CPS	45	46	65	50	49	77	62	44	11	31	23	36	40	579
		CWS	14	13	25	13	19	27	13	12	5	8	7	10	7	173
		Total	59	59	90	63	68	104	75	56	16	39	30	46	47	752
	Hudson West	CPS	53	86	110	87	101	108	100	65	34	45	35	47	55	926
		CWS	21	32	46	30	27	39	28	25	5	6	7	17	12	295
		Total	74	118	156	117	128	147	128	90	39	51	42	64	67	1221
	County Totals	CPS	228	300	394	331	320	411	346	263	105	187	154	220	215	3474
CWS		79	100	141	106	95	147	103	84	32	39	45	62	53	1086	
Total		307	400	535	437	415	558	449	347	137	226	199	282	268	4560	
HUNTERDON	Hunterdon	CPS	33	56	46	45	51	48	37	30	20	27	20	29	34	476
		CWS	15	18	14	18	15	19	11	9	2	3	4	4	6	138
		Total	48	74	60	63	66	67	48	39	22	30	24	33	40	614
	County Totals	CPS	33	56	46	45	51	48	37	30	20	27	20	29	34	476
		CWS	15	18	14	18	15	19	11	9	2	3	4	4	6	138
Total	48	74	60	63	66	67	48	39	22	30	24	33	40	614		
MERCER	Mercer North	CPS	90	113	100	111	106	120	108	89	45	50	76	87	78	1173
		CWS	24	30	52	27	36	30	41	17	14	16	11	16	15	329
		Total	114	143	152	138	142	150	149	106	59	66	87	103	93	1502
	Mercer South	CPS	116	107	140	108	102	144	102	85	36	65	65	81	78	1229
		CWS	35	26	45	44	23	50	28	19	11	13	12	13	16	335
		Total	151	133	185	152	125	194	130	104	47	78	77	94	94	1564
	County Totals	CPS	206	220	240	219	208	264	210	174	81	115	141	168	156	2402
CWS		59	56	97	71	59	80	69	36	25	29	23	29	31	664	
Total	265	276	337	290	267	344	279	210	106	144	164	197	187	3066		

Data in this report is preliminary and may differ from any final report. This report is produced to ensure continuous quality improvement throughout DCF.



Table 5: Monthly Count of CPS Reports and CWS Referrals Assigned to CP&P Local Offices

County	Local Office	Type of Referral														Total
			Aug 2019	Sep 2019	Oct 2019	Nov 2019	Dec 2019	Jan 2020	Feb 2020	Mar 2020	Apr 2020	May 2020	Jun 2020	Jul 2020	Aug 2020	
MIDDLESEX	Middlesex Central	CPS	77	103	129	103	103	139	109	94	64	62	68	67	66	1184
		CWS	24	26	30	27	25	36	31	23	10	6	10	11	12	271
		Total	101	129	159	130	128	175	140	117	74	68	78	78	78	1455
	Middlesex Coastal	CPS	115	136	146	115	146	160	135	131	54	69	95	109	116	1527
		CWS	32	37	49	43	35	41	32	35	14	12	15	17	20	382
		Total	147	173	195	158	181	201	167	166	68	81	110	126	136	1909
	Middlesex West	CPS	76	136	145	121	139	151	125	97	58	75	79	84	88	1374
		CWS	33	51	59	17	40	53	43	25	5	7	16	22	19	390
		Total	109	187	204	138	179	204	168	122	63	82	95	106	107	1764
	County Totals	CPS	268	375	420	339	388	450	369	322	176	206	242	260	270	4085
		CWS	89	114	138	87	100	130	106	83	29	25	41	50	51	1043
		Total	357	489	558	426	488	580	475	405	205	231	283	310	321	5128
MONMOUTH	Monmouth North	CPS	120	172	182	168	146	171	154	134	84	98	106	123	118	1776
		CWS	39	37	56	50	51	63	42	37	10	18	22	26	27	478
		Total	159	209	238	218	197	234	196	171	94	116	128	149	145	2254
	Monmouth South	CPS	101	127	152	101	123	124	138	110	58	71	89	99	100	1393
		CWS	27	42	47	31	29	53	47	20	14	9	16	15	22	372
		Total	128	169	199	132	152	177	185	130	72	80	105	114	122	1765
	County Totals	CPS	221	299	334	269	269	295	292	244	142	169	195	222	218	3169
		CWS	66	79	103	81	80	116	89	57	24	27	38	41	49	850
		Total	287	378	437	350	349	411	381	301	166	196	233	263	267	4019
MORRIS	Morris East	CPS	65	84	85	91	71	94	85	75	35	70	48	53	64	920
		CWS	16	33	36	33	25	36	42	19	8	15	16	13	12	304
		Total	81	117	121	124	96	130	127	94	43	85	64	66	76	1224
	Morris West	CPS	72	116	99	78	89	101	115	75	39	34	58	75	53	1004
		CWS	34	33	35	24	27	33	31	25	3	5	15	11	21	297
		Total	106	149	134	102	116	134	146	100	42	39	73	86	74	1301
	County Totals	CPS	137	200	184	169	160	195	200	150	74	104	106	128	117	1924
		CWS	50	66	71	57	52	69	73	44	11	20	31	24	33	601
		Total	187	266	255	226	212	264	273	194	85	124	137	152	150	2525
OCEAN	Ocean North	CPS	134	189	207	158	189	197	196	150	81	133	121	147	121	2023
		CWS	41	55	85	36	45	67	47	37	8	17	18	24	20	500
		Total	175	244	292	194	234	264	243	187	89	150	139	171	141	2523
	Ocean South	CPS	121	146	174	152	134	173	168	131	73	95	113	142	112	1734
		CWS	41	38	59	41	38	45	35	37	15	12	12	23	25	421
		Total	162	184	233	193	172	218	203	168	88	107	125	165	137	2155
	County Totals	CPS	255	335	381	310	323	370	364	281	154	228	234	289	233	3757
		CWS	82	93	144	77	83	112	82	74	23	29	30	47	45	921
		Total	337	428	525	387	406	482	446	355	177	257	264	336	278	4678
PASSAIC	Passaic Central	CPS	119	183	205	153	140	172	180	154	55	87	102	102	86	1738
		CWS	36	65	73	50	64	66	63	44	17	24	25	18	22	567
		Total	155	248	278	203	204	238	243	198	72	111	127	120	108	2305
	Passaic North	CPS	121	154	182	141	151	149	160	124	60	84	70	123	108	1627
		CWS	51	41	59	46	54	69	57	31	11	18	22	24	34	517
		Total	172	195	241	187	205	218	217	155	71	102	92	147	142	2144
	County Totals	CPS	240	337	387	294	291	321	340	278	115	171	172	225	194	3365
		CWS	87	106	132	96	118	135	120	75	28	42	47	42	56	1084
		Total	327	443	519	390	409	456	460	353	143	213	219	267	250	4449
SALEM	Salem	CPS	62	74	82	71	51	58	58	64	31	37	40	45	39	712
		CWS	23	18	16	7	18	21	24	11	4	7	13	11	9	182
		Total	85	92	98	78	69	79	82	75	35	44	53	56	48	894
	County Totals	CPS	62	74	82	71	51	58	58	64	31	37	40	45	39	712
		CWS	23	18	16	7	18	21	24	11	4	7	13	11	9	182
Total	85	92	98	78	69	79	82	75	35	44	53	56	48	894		
SOMERSET	Somerset	CPS	84	140	158	124	115	150	151	103	57	78	69	98	84	1411
		CWS	30	40	44	31	31	47	38	23	9	14	13	16	17	353
		Total	114	180	202	155	146	197	189	126	66	92	82	114	101	1764
	County Totals	CPS	84	140	158	124	115	150	151	103	57	78	69	98	84	1411
		CWS	30	40	44	31	31	47	38	23	9	14	13	16	17	353
Total	114	180	202	155	146	197	189	126	66	92	82	114	101	1764		

Data in this report is preliminary and may differ from any final report. This report is produced to ensure continuous quality improvement throughout DCF.



Table 5: Monthly Count of CPS Reports and CWS Referrals Assigned to CP&P Local Offices

County	Local Office	Type of Referral														Total	
			Aug 2019	Sep 2019	Oct 2019	Nov 2019	Dec 2019	Jan 2020	Feb 2020	Mar 2020	Apr 2020	May 2020	Jun 2020	Jul 2020	Aug 2020		
SUSSEX	Sussex	CPS	84	104	97	71	74	85	93	55	41	38	45	75	59	921	
		CWS	23	21	32	20	30	29	23	18	6	10	6	11	14	243	
		Total	107	125	129	91	104	114	116	73	47	48	51	86	73	1164	
	County Totals	CPS	84	104	97	71	74	85	93	55	41	38	45	75	59	921	
		CWS	23	21	32	20	30	29	23	18	6	10	6	11	14	243	
		Total	107	125	129	91	104	114	116	73	47	48	51	86	73	1164	
UNION	Union Central	CPS	75	82	91	81	75	98	87	73	37	44	41	56	56	896	
		CWS	17	26	31	32	32	29	31	16	8	6	10	8	11	257	
		Total	92	108	122	113	107	127	118	89	45	50	51	64	67	1153	
	Union East	CPS	63	68	89	81	86	92	97	54	35	44	50	46	84	889	
		CWS	22	29	40	29	19	36	40	19	5	4	15	7	16	281	
		Total	85	97	129	110	105	128	137	73	40	48	65	53	100	1170	
	Union West	CPS	55	94	112	99	78	94	88	64	46	44	52	54	52	932	
		CWS	20	22	37	23	37	34	40	20	6	5	22	10	6	282	
		Total	75	116	149	122	115	128	128	84	52	49	74	64	58	1214	
	County Totals	CPS	193	244	292	261	239	284	272	191	118	132	143	156	192	2717	
		CWS	59	77	108	84	88	99	111	55	19	15	47	25	33	820	
		Total	252	321	400	345	327	383	383	246	137	147	190	181	225	3537	
WARREN	Warren	CPS	69	79	72	78	69	67	77	55	46	43	40	64	66	825	
		CWS	19	18	24	15	13	31	24	10	8	7	16	11	11	207	
		Total	88	97	96	93	82	98	101	65	54	50	56	75	77	1032	
	County Totals	CPS	69	79	72	78	69	67	77	55	46	43	40	64	66	825	
		CWS	19	18	24	15	13	31	24	10	8	7	16	11	11	207	
		Total	88	97	96	93	82	98	101	65	54	50	56	75	77	1032	
County CPS Referral Total		CPS	3,825	4,969	5,558	4,725	4,598	5,388	5,077	3,958	2,082	2,797	2,948	3,514	3,432	52,871	
County CWS Referral Total		CWS	1,234	1,498	1,864	1,383	1,387	1,778	1,576	1,036	402	531	630	732	737	14,788	
County Referral Total		Total	5,059	6,467	7,422	6,108	5,985	7,166	6,653	4,994	2,484	3,328	3,578	4,246	4,169	67,659	
Central Region IAIU		CPS	41	60	70	49	48	67	63	34	10	6	23	17	17	505	
		CWS	0	0	0	0	0	0	0	0	0	0	0	0	0	0	0
		Total	41	60	70	49	48	67	63	34	10	6	23	17	17	505	
Metro Region IAIU		CPS	42	43	80	45	41	46	69	33	3	11	2	13	13	441	
		CWS	0	0	0	0	0	0	0	0	0	0	0	0	0	0	0
		Total	42	43	80	45	41	46	69	33	3	11	2	13	13	441	
Northern Region IAIU		CPS	37	68	77	45	45	59	42	44	6	12	10	14	12	471	
		CWS	0	0	0	0	0	0	0	0	0	0	0	0	0	0	0
		Total	37	68	77	45	45	59	42	44	6	12	10	14	12	471	
Southern Region IAIU		CPS	57	83	75	59	62	82	61	51	12	18	20	23	30	633	
		CWS	0	0	0	0	0	0	0	0	0	0	0	0	0	0	0
		Total	57	83	75	59	62	82	61	51	12	18	20	23	30	633	
IAIU CPS Subtotal		CPS	177	254	302	198	196	254	235	162	31	47	55	67	72	2,050	
IAIU CWS Subtotal		CWS	0	0	0	0	0	0	0	0	0	0	0	0	0	0	
IAIU Subtotal		Total	177	254	302	198	196	254	235	162	31	47	55	67	72	2,050	
County and IAIU CPS Subtotal		CPS	4,002	5,223	5,860	4,923	4,794	5,642	5,312	4,120	2,113	2,844	3,003	3,581	3,504	54,921	
County and IAIU CWS Subtotal		CWS	1,234	1,498	1,864	1,383	1,387	1,778	1,576	1,036	402	531	630	732	737	14,788	
Unable to Determine(1)		Total	138	145	170	117	108	135	113	79	39	59	48	51	149	1,351	
Other Offices		Total	0	0	0	0	0	2	3	2	2	0	0	2	1	12	
Grand Total		Total	5,374	6,866	7,894	6,423	6,289	7,557	7,004	5,237	2,556	3,434	3,681	4,366	4,391	71,072	

(1) CPS Reports or CWS Referrals not assigned to an office through the Assignment Designee, but were assigned to an office for an assessment or investigation.