



NEW JERSEY DEPARTMENT OF
CHILDREN AND FAMILIES

Child Protection and Permanency

Monthly Screening and Investigation Report August 2022

Christine Norbut Beyer, MSW
Commissioner



Table of Contents

Table 1: NJ State Central Registry Activity: Monthly Child Abuse and Neglect Hotline Calls, Intakes and Assignments to Child Protection & Permanency (CP&P) Offices

Chart 1: CP&P Annual Trends in Child Protection Services (CPS) Reports and Child Welfare Services (CWS) Referrals

Table 2: Assignments to CP&P Offices: CPS Reports and CWS Referrals

Table 3: Source of CPS Reports and CWS Referrals

Table 4: Monthly Count of CPS Reports and CWS Referrals Assigned to Counties

Table 5: Monthly Count of CPS Reports and CWS Referrals Assigned to CP&P Local Offices

Table 1: NJ State Central Registry Activity: Monthly Child Abuse and Neglect Hotline Calls, Intakes and Assignments to CP&P Offices^{1,2,7}

2021-2022	Hotline Call Activity				Intakes Recorded in NJ SPIRIT ^{6,8}													Assignments to CP&P Offices					
	Total Calls to SCR ³	Abandon Calls ⁴	Average Time to Answer (seconds)	Resulting NJS Intakes ⁵	CPS Reports		CWS Referrals		No Action Required (NAR)		Related Information (RI)		Information & Referral (I&R)		Information Only (IO)		Unusual Incident (UIRS)		CPS Reports		CWS Referrals		Total
					n	%	n	%	n	%	n	%	n	%	n	%	n	%	n	%	n	%	
August 2021	10,365	508	78	10,897	3,866	35.5%	482	4.4%	172	1.6%	2,371	21.8%	2,301	21.1%	1,704	15.6%	1	0.0%	3,866	88.9%	482	11.1%	4,348
September 2021	12,259	591	91	12,780	4,559	35.7%	564	4.4%	148	1.2%	2,794	21.9%	2,894	22.6%	1,819	14.2%	2	0.0%	4,559	89.0%	564	11.0%	5,123
October 2021	14,262	1,183	152	14,500	5,213	36.0%	631	4.4%	200	1.4%	3,287	22.7%	3,277	22.6%	1,890	13.0%	2	0.0%	5,213	89.2%	630	10.8%	5,843
November 2021	13,077	1,619	262	12,689	4,689	37.0%	539	4.2%	165	1.3%	2,817	22.2%	2,865	22.6%	1,609	12.7%	5	0.0%	4,689	89.7%	541	10.3%	5,230
December 2021	12,921	1,426	222	12,594	4,601	36.5%	558	4.4%	157	1.2%	2,746	21.8%	2,858	22.7%	1,660	13.2%	14	0.1%	4,601	89.2%	557	10.8%	5,158
January 2022	11,733	942	163	11,798	4,274	36.2%	524	4.4%	116	1.0%	2,561	21.7%	2,641	22.4%	1,672	14.2%	10	0.1%	4,274	89.1%	523	10.9%	4,797
February 2022	13,523	1,838	304	12,923	4,867	37.7%	632	4.9%	168	1.3%	2,732	21.1%	2,990	23.1%	1,524	11.8%	10	0.1%	4,867	88.5%	635	11.5%	5,502
March 2022	15,347	1,916	281	14,886	5,781	38.8%	727	4.9%	207	1.4%	2,946	19.8%	3,468	23.3%	1,750	11.8%	7	0.0%	5,780	88.8%	727	11.2%	6,507
April 2022	13,145	2,124	398	12,290	4,669	38.0%	637	5.2%	168	1.4%	2,486	20.2%	2,786	22.7%	1,537	12.5%	7	0.1%	4,669	88.0%	636	12.0%	5,305
May 2022	13,609	1,526	201	13,433	5,228	38.9%	644	4.8%	177	1.3%	2,804	20.9%	2,967	22.1%	1,604	11.9%	9	0.1%	5,228	89.0%	647	11.0%	5,875
June 2022	13,105	1,997	325	12,478	4,854	38.9%	597	4.8%	196	1.6%	2,678	21.5%	2,580	20.7%	1,569	12.6%	4	0.0%	4,854	89.0%	598	11.0%	5,452
July 2022	11,225	1,022	164	11,445	4,277	37.4%	590	5.2%	155	1.4%	2,712	23.7%	1,956	17.1%	1,749	15.3%	6	0.1%	4,277	87.9%	590	12.1%	4,867
August 2022	10,651	841	101	16,623	4,103	24.7%	589	3.5%	164	1.0%	2,465	14.8%	4,070	24.5%	5,202	31.3%	30	0.2%	4,103	87.4%	589	12.6%	4,692
	12,709	1,349	211	13,026	4,691	36.0%	593	4.6%	169	1.3%	2,723	20.9%	2,896	22.2%	1,945	14.9%	8	0.1%	4,691	88.8%	594	11.2%	5,285
Overall Total	165,222	17,533		169,336	60,981		7,714		2,193		35,399		37,653		25,289		107		60,980	88.8%	7,719	11.2%	68,699

¹Comes from three distinct sources: (1) the Automatic Call Distribution (ACD) phone system; which keeps a count of the number of calls and call routing; (2) Monthly NJSpirit Intakes; which record decision making on calls received by hotline screeners, and (3)

²The number of Intakes, CPS Reports, and CWS Referrals are based on an extract from NJSpirit.

Data extracted by the Office of Research, Evaluation, and Reporting on **September 08, 2022** includes all Intakes, CPS Reports, and CWS Referrals received from **August 01, 2022** through **August 31, 2022**.

³The number calls received through the ACD System that were directed to a screener from any call-in phone number.

⁴The number of calls received through the ACD System that are abandoned either while waiting in queue or while ringing.

⁵The number of Intakes entered in NJSpirit from the number of calls received.

⁶The number of Intakes recorded in NJSpirit, by type of Intake. There is not a one-to-one relationship between an ACD call and an Intake; multiple calls to State Central Registry (SCR) may result in a single Intake, or one call may result in multiple Intakes.

⁷Intake: The process of documenting: a report of alleged abuse or neglect of a child (CPS); a request for services on behalf of a child, or a referral of a child for services (CWS); a call in which the caller provides additional or clarifying information about a current

CP&P Annual Trends in CPS Reports and CWS Referrals

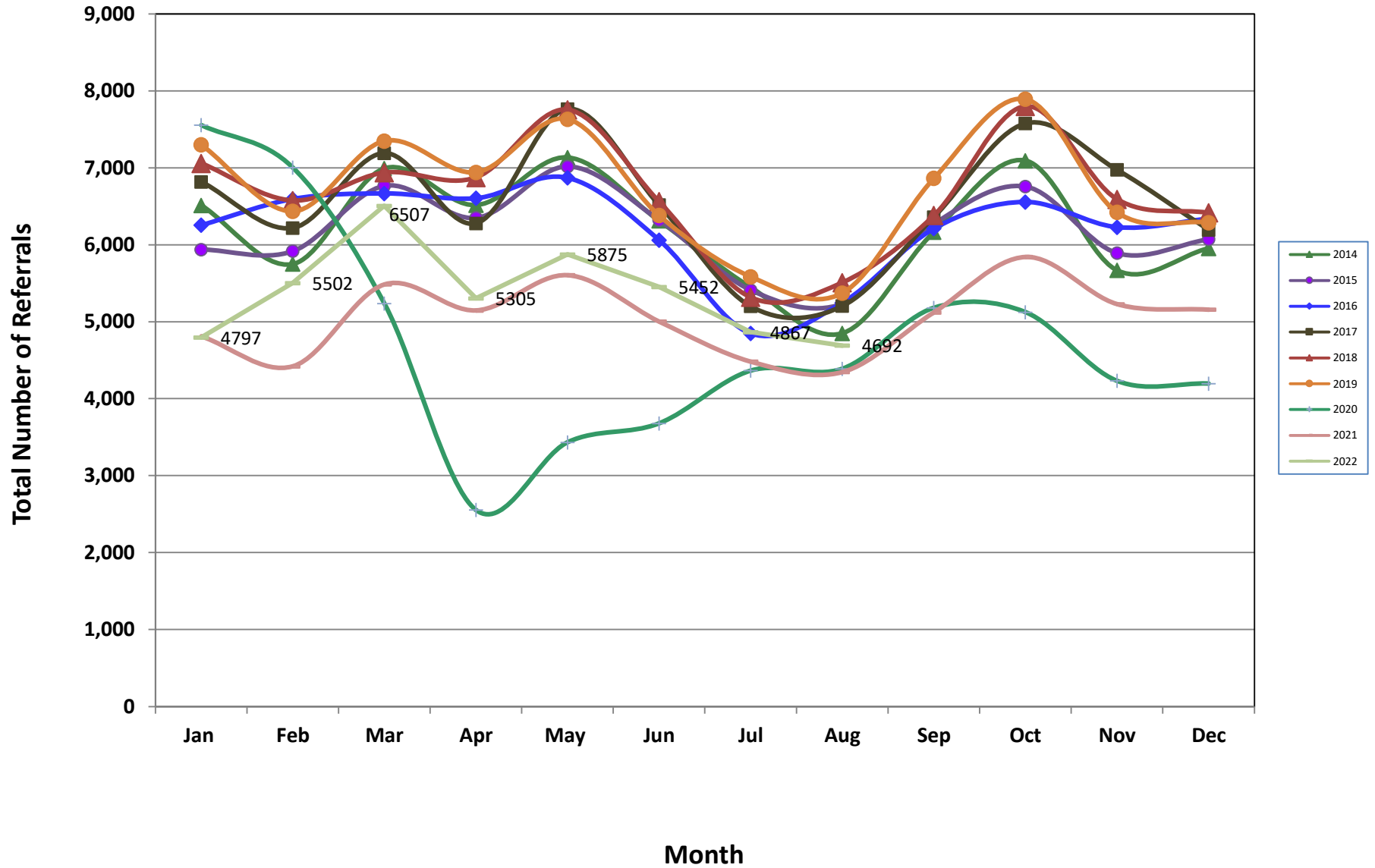


Table 2: Assignments to CP&P Offices: CPS Reports and CWS Referrals¹

Intake Date ³		CPS Reports ²	CWS Referrals ²	Total Assignments ²
2017	Jan 2017	5,111	1,708	6,819
	Feb 2017	4,716	1,504	6,220
	Mar 2017	5,349	1,843	7,192
	Apr 2017	4,790	1,490	6,280
	May 2017	5,847	1,919	7,766
	Jun 2017	4,853	1,665	6,518
	Jul 2017	3,814	1,389	5,203
	Aug 2017	3,866	1,340	5,206
	Sep 2017	4,719	1,643	6,362
	Oct 2017	5,613	1,966	7,579
	Nov 2017	5,223	1,753	6,976
	Dec 2017	4,601	1,594	6,195
	Total	58,502	19,814	78,316
2018	Jan 2018	5,276	1,784	7,060
	Feb 2018	4,933	1,644	6,577
	Mar 2018	5,212	1,727	6,939
	Apr 2018	5,275	1,601	6,876
	May 2018	5,920	1,836	7,756
	Jun 2018	4,948	1,615	6,563
	Jul 2018	4,011	1,308	5,319
	Aug 2018	4,102	1,408	5,510
	Sep 2018	4,748	1,634	6,382
	Oct 2018	5,790	2,011	7,801
	Nov 2018	4,973	1,620	6,593
	Dec 2018	4,891	1,527	6,418
	Total	60,079	19,715	79,794
2019	Jan 2019	5,443	1,858	7,301
	Feb 2019	4,811	1,628	6,439
	Mar 2019	5,677	1,824	7,501
	Apr 2019	5,313	1,630	6,943
	May 2019	5,853	1,781	7,634
	Jun 2019	4,874	1,509	6,383
	Jul 2019	4,277	1,309	5,586
	Aug 2019	4,068	1,306	5,374
	Sep 2019	5,315	1,551	6,866
	Oct 2019	5,968	1,926	7,894
	Nov 2019	4,991	1,432	6,423
	Dec 2019	4,855	1,434	6,289
	Total	61,445	19,188	80,633

Table 2: Assignments to CP&P Offices: CPS Reports and CWS Referrals¹

Intake Date ³		CPS Reports ²	CWS Referrals ²	Total Assignments ²
2020	Jan 2020	5,715	1,842	7,557
	Feb 2020	5,380	1,624	7,004
	Mar 2020	4,172	1,065	5,237
	Apr 2020	2,149	407	2,556
	May 2020	2,897	537	3,434
	Jun 2020	3,045	636	3,681
	Jul 2020	3,628	738	4,366
	Aug 2020	3,569	822	4,391
	Sep 2020	4,153	1,030	5,183
	Oct 2020	4,257	868	5,125
	Nov 2020	3,564	670	4,234
	Dec 2020	3,517	681	4,198
	Total	46,046	10,920	56,966
2021	Jan 2021	4,018	794	4,812
	Feb 2021	3,767	655	4,422
	Mar 2021	4,657	830	5,487
	Apr 2021	4,398	750	5,148
	May 2021	4,870	736	5,606
	Jun 2021	4,412	592	5,004
	Jul 2021	3,914	570	4,484
	Aug 2021	3,866	482	4,348
	Sep 2021	4,559	564	5,123
	Oct 2021	5,213	630	5,843
	Nov 2021	4,689	541	5,230
	Dec 2021	4,601	557	5,158
	Total	52,964	7,701	60,665
2022	Jan 2022	4,274	523	4,797
	Feb 2022	4,867	635	5,502
	Mar 2022	5,780	727	6,507
	Apr 2022	4,669	636	5,305
	May 2022	5,228	647	5,875
	Jun 2022	4,854	598	5,452
	Jul 2022	4,277	590	4,867
	Aug 2022	4,103	589	4,692
	Total	33,778	4,422	38,200
Grand Total		312,814	81,760	394,574

¹Source of Data: NJ SPIRIT

²A CPS Report or a CWS Referral may include multiple children in a family, with one or more allegation or request for services. In these cases, each CPS Report or CWS Referral is counted once - the CPS Report or the CWS Referral is the unit of analysis rather than the child.

³Prior to January 2014, the number of CPS Reports and CWS Referrals was based on the type of assignment of the CPS Report or CWS Referral. Beginning in January 2014, the number of CPS Reports and CWS Referrals is based on the number of CPS Reports and CWS Referrals received.

Table 3: Source of CPS Reports and CWS Referrals

CPS Reports and CWS Referrals	Source	Aug 2021	Sep 2021	Oct 2021	Nov 2021	Dec 2021	Jan 2022	Feb 2022	Mar 2022	Apr 2022	May 2022	Jun 2022	Jul 2022	Aug 2022		13 Month Total	
	School Staff	83	863	1,450	1,303	1,252	983	1,549	1,998	1,227	1,456	929	162	91	2%	13,346	19%
	Healthcare Provider	789	824	780	746	706	746	750	895	728	763	786	787	777	17%	10,077	15%
	Law Enforcement	1,384	1,397	1,446	1,340	1,341	1,238	1,234	1,478	1,373	1,513	1,549	1,624	1,617	34%	18,534	27%
	Government Agency	265	266	222	205	209	212	253	261	261	233	262	276	260	6%	3,185	5%
	Parent	404	347	393	377	378	347	349	380	333	383	399	420	413	9%	4,923	7%
	Relative/Friend/Neighbor	363	372	350	289	342	337	275	298	301	344	318	380	346	7%	4,315	6%
	Anonymous	401	444	506	364	367	366	461	471	410	527	493	437	458	10%	5,705	8%
	CP&P	45	60	73	45	49	54	56	75	62	42	53	53	46	1%	713	1%
	Court/Legal	88	120	126	89	89	100	108	144	140	116	136	144	147	3%	1,547	2%
	Community Group/Individual	159	137	175	169	144	158	183	198	176	201	205	235	211	4%	2,351	3%
	Facility Staff (incl Correctional Facility)	69	51	55	47	53	54	56	55	59	62	59	59	52	1%	731	1%
	Child (Self)	49	41	42	28	30	29	29	25	25	18	28	30	34	1%	408	1%
	Other	236	189	214	217	182	160	183	209	188	194	222	241	216	5%	2,651	4%
	Daycare/Babysitter	13	12	11	11	16	13	16	20	22	23	13	19	24	1%	213	0%
Total	4,348	5,123	5,843	5,230	5,158	4,797	5,502	6,507	5,305	5,875	5,452	4,867	4,692		68,699		

Table 4: Monthly Count of CPS Reports and CWS Referrals Assigned to Counties

County														Average Number of Assignments Last 13 Months	Jul 22 to Aug 22 Numerical Difference
	Aug 2021	Sep 2021	Oct 2021	Nov 2021	Dec 2021	Jan 2022	Feb 2022	Mar 2022	Apr 2022	May 2022	Jun 2022	Jul 2022	Aug 2022		
Atlantic	182	215	255	234	215	189	245	268	222	250	233	197	217	225	20
Bergen	249	325	350	345	360	290	354	425	348	327	349	305	276	331	-29
Burlington	223	263	280	264	270	264	283	359	255	300	292	284	240	275	-44
Camden	371	466	511	407	419	404	449	542	458	474	422	385	415	440	30
Cape May	72	70	70	66	70	62	59	74	62	68	69	76	78	69	2
Cumberland	140	180	196	167	190	149	160	202	166	206	182	180	166	176	-14
Essex	442	484	565	535	489	456	550	647	532	581	517	477	497	521	20
Gloucester	207	208	221	215	204	216	195	257	217	218	206	211	190	213	-21
Hudson	287	303	371	349	321	341	392	415	324	409	327	323	242	339	-81
Hunterdon	33	39	52	44	44	40	33	55	46	38	56	29	32	42	3
Mercer	185	222	245	218	230	189	229	263	217	258	229	239	232	227	-7
Middlesex	317	385	472	355	408	356	464	520	388	432	404	283	308	392	25
Monmouth	256	250	331	294	294	260	288	342	297	332	286	236	266	287	30
Morris	137	173	185	189	176	193	193	213	180	216	205	165	171	184	6
Ocean	310	337	382	341	333	304	305	370	332	372	375	340	320	340	-20
Passaic	245	313	402	350	330	274	354	415	347	385	350	295	264	333	-31
Salem	48	75	78	56	57	65	74	84	55	81	53	62	67	66	5
Somerset	97	131	148	130	111	112	141	165	107	142	132	113	92	125	-21
Sussex	67	90	99	85	72	84	100	107	95	95	95	73	69	87	-4
Union	226	256	293	277	277	257	290	363	317	332	310	281	259	288	-22
Warren	55	99	68	93	67	86	83	121	79	86	85	73	78	83	5
County Subtotals	4,149	4,884	5,574	5,014	4,937	4,591	5,241	6,207	5,044	5,602	5,177	4,627	4,479	5,040	-148
Central Region IAIU	25	42	53	31	37	32	43	54	35	60	32	38	35	40	-3
Metro Region IAIU	22	36	29	26	21	27	36	35	35	41	41	22	23	30	1
Northern Region IAIU	19	27	39	44	42	28	40	50	38	52	40	32	33	37	1
Southern Region IAIU	42	51	41	33	42	35	46	59	46	48	56	56	27	45	-29
IAIU Subtotals	108	156	162	134	142	122	165	198	154	201	169	148	118	152	-30
¹ Unable to Determine	91	83	107	82	78	84	92	102	107	72	103	90	93	91	3
Other Offices	0	0	0	0	1	0	4	0	0	0	3	2	2	1	0
Grand Total	4,348	5,123	5,843	5,230	5,158	4,797	5,502	6,507	5,305	5,875	5,452	4,867	4,692	5,285	-175

¹CPS Reports or CWS Referrals not assigned to an office through the Assignment Designee, but were assigned to an office for an assessment or investigation.



Table 5: Monthly Count of CPS Reports and CWS Referrals Assigned to CP&P Local Offices

County	Local Office	Type of Referral														Total
			Aug 2021	Sep 2021	Oct 2021	Nov 2021	Dec 2021	Jan 2022	Feb 2022	Mar 2022	Apr 2022	May 2022	Jun 2022	Jul 2022	Aug 2022	
ATLANTIC	Atlantic East	CPS	97	106	126	118	104	114	124	128	106	116	117	88	100	1,444
		CWS	17	10	13	12	14	9	13	21	26	15	19	21	22	212
		Total	114	116	139	130	118	123	137	149	132	131	136	109	122	1,656
	Atlantic West	CPS	60	82	104	90	85	58	90	103	81	107	85	74	84	1,103
		CWS	8	17	12	14	12	8	18	16	9	12	12	14	11	163
		Total	68	99	116	104	97	66	108	119	90	119	97	88	95	1,266
	County Totals	CPS	157	188	230	208	189	172	214	231	187	223	202	162	184	2,547
		CWS	25	27	25	26	26	17	31	37	35	27	31	35	33	375
		Total	182	215	255	234	215	189	245	268	222	250	233	197	217	2,922
BERGEN	Bergen Central	CPS	85	132	139	133	127	111	152	169	119	119	142	108	82	1,618
		CWS	6	13	19	18	11	13	17	17	18	13	7	14	27	193
		Total	91	145	158	151	138	124	169	186	137	132	149	122	109	1,811
	Bergen South	CPS	147	157	177	174	197	148	170	217	188	179	176	160	142	2,232
		CWS	11	23	15	20	25	18	15	22	23	16	24	23	25	260
		Total	158	180	192	194	222	166	185	239	211	195	200	183	167	2,492
	County Totals	CPS	232	289	316	307	324	259	322	386	307	298	318	268	224	3,850
		CWS	17	36	34	38	36	31	32	39	41	29	31	37	52	453
		Total	249	325	350	345	360	290	354	425	348	327	349	305	276	4,303
BURLINGTON	Burlington East	CPS	91	103	137	115	111	119	121	162	103	134	133	115	96	1,540
		CWS	10	17	11	18	16	16	11	17	17	15	21	16	22	207
		Total	101	120	148	133	127	135	132	179	120	149	154	131	118	1,747
	Burlington West	CPS	100	125	115	115	128	119	127	156	118	129	123	134	106	1,595
		CWS	22	18	17	16	15	10	24	24	17	22	15	19	16	235
		Total	122	143	132	131	143	129	151	180	135	151	138	153	122	1,830
	County Totals	CPS	191	228	252	230	239	238	248	318	221	263	256	249	202	3,135
		CWS	32	35	28	34	31	26	35	41	34	37	36	35	38	442
		Total	223	263	280	264	270	264	283	359	255	300	292	284	240	3,577
CAMDEN	Camden Central	CPS	88	105	117	93	91	91	104	111	95	112	99	95	112	1,313
		CWS	16	15	17	15	14	16	16	7	9	17	21	13	20	196
		Total	104	120	134	108	105	107	120	118	104	129	120	108	132	1,509
	Camden East	CPS	84	101	128	94	81	84	95	106	107	94	98	84	68	1,224
		CWS	16	10	16	14	20	22	11	20	15	16	20	8	9	197
		Total	100	111	144	108	101	106	106	126	122	110	118	92	77	1,421
	Camden North	CPS	67	97	102	91	87	89	103	135	98	85	71	73	86	1,184
		CWS	13	17	15	5	14	9	16	22	22	21	12	18	14	198
		Total	80	114	117	96	101	98	119	157	120	106	83	91	100	1,382
	Camden South	CPS	75	108	96	85	94	83	95	117	101	122	88	81	92	1,237
		CWS	12	13	20	10	18	10	9	24	11	7	13	13	14	174
		Total	87	121	116	95	112	93	104	141	112	129	101	94	106	1,411
County Totals	CPS	314	411	443	363	353	347	397	469	401	413	356	333	358	4,958	
	CWS	57	55	68	44	66	57	52	73	57	61	66	52	57	765	
	Total	371	466	511	407	419	404	449	542	458	474	422	385	415	5,723	
CAPE MAY	Cape May	CPS	64	61	61	56	61	56	52	63	56	58	61	68	66	783
		CWS	8	9	9	10	9	6	7	11	6	10	8	8	12	113
		Total	72	70	70	66	70	62	59	74	62	68	69	76	78	896
	County Totals	CPS	64	61	61	56	61	56	52	63	56	58	61	68	66	783
		CWS	8	9	9	10	9	6	7	11	6	10	8	8	12	113
Total	72	70	70	66	70	62	59	74	62	68	69	76	78	896		
CUMBERLAND	Cumberland East	CPS	58	77	75	59	71	56	54	74	59	65	65	62	66	841
		CWS	4	8	11	6	8	11	14	10	4	12	11	10	12	121
		Total	62	85	86	65	79	67	68	84	63	77	76	72	78	962
	Cumberland West	CPS	71	89	102	94	96	67	81	109	90	115	94	92	78	1,178
		CWS	7	6	8	8	15	15	11	9	13	14	12	16	10	144
		Total	78	95	110	102	111	82	92	118	103	129	106	108	88	1,322
	County Totals	CPS	129	166	177	153	167	123	135	183	149	180	159	154	144	2,019
CWS		11	14	19	14	23	26	25	19	17	26	23	26	22	265	
Total	140	180	196	167	190	149	160	202	166	206	182	180	166	2,284		

Data in this report is preliminary and may differ from any final report. This report is produced to ensure continuous quality improvement throughout DCF.



Table 5: Monthly Count of CPS Reports and CWS Referrals Assigned to CP&P Local Offices

County	Local Office	Type of Referral														Total
			Aug 2021	Sep 2021	Oct 2021	Nov 2021	Dec 2021	Jan 2022	Feb 2022	Mar 2022	Apr 2022	May 2022	Jun 2022	Jul 2022	Aug 2022	
ESSEX	Essex Central	CPS	59	75	88	78	68	57	69	78	89	83	77	73	79	973
		CWS	12	6	14	7	12	6	13	10	14	10	9	8	9	130
		Total	71	81	102	85	80	63	82	88	103	93	86	81	88	1,103
	Essex North	CPS	49	50	78	85	109	81	88	115	82	91	90	71	60	1,049
		CWS	1	3	9	12	8	13	10	6	7	11	6	13	5	104
		Total	50	53	87	97	117	94	98	121	89	102	96	84	65	1,153
	Essex South	CPS	74	76	104	84	62	65	89	123	82	106	86	77	83	1,111
		CWS	9	13	14	11	15	8	11	15	10	17	9	12	9	153
		Total	83	89	118	95	77	73	100	138	92	123	95	89	92	1,264
	Newark Center City	CPS	64	75	86	64	75	79	71	90	75	88	67	65	73	972
		CWS	11	12	6	11	13	2	8	9	9	9	10	9	10	119
		Total	75	87	92	75	88	81	79	99	84	97	77	74	83	1,091
	Newark Northeast	CPS	61	71	75	80	50	68	91	94	83	72	63	61	74	943
		CWS	7	9	14	6	5	8	13	14	5	6	7	10	11	115
		Total	68	80	89	86	55	76	104	108	88	78	70	71	85	1,058
	Newark South	CPS	81	83	72	85	65	55	79	88	65	76	80	68	75	972
		CWS	14	11	5	12	7	14	8	5	11	12	13	10	9	131
		Total	95	94	77	97	72	69	87	93	76	88	93	78	84	1,103
County Totals	CPS	388	430	503	476	429	405	487	588	476	516	463	415	444	6020	
	CWS	54	54	62	59	60	51	63	59	56	65	54	62	53	752	
	Total	442	484	565	535	489	456	550	647	532	581	517	477	497	6,772	
GLOUCESTER	Gloucester East	CPS	76	80	97	88	90	86	84	107	79	88	81	90	78	1,124
		CWS	8	19	13	13	7	14	12	16	18	9	13	13	11	166
		Total	84	99	110	101	97	100	96	123	97	97	94	103	89	1,290
	Gloucester West	CPS	113	97	93	95	92	103	91	123	103	109	98	101	85	1,303
		CWS	10	12	18	19	15	13	8	11	17	12	14	7	16	172
		Total	123	109	111	114	107	116	99	134	120	121	112	108	101	1,475
	County Totals	CPS	189	177	190	183	182	189	175	230	182	197	179	191	163	2,427
		CWS	18	31	31	32	22	27	20	27	35	21	27	20	27	338
		Total	207	208	221	215	204	216	195	257	217	218	206	211	190	2,765
HUDSON	Hudson Central	CPS	104	78	111	80	70	78	93	99	74	131	82	90	75	1,165
		CWS	8	15	13	18	15	9	18	17	11	10	14	10	9	167
		Total	112	93	124	98	85	87	111	116	85	141	96	100	84	1,332
	Hudson North	CPS	60	59	68	80	81	90	98	108	65	74	70	69	48	970
		CWS	12	11	9	6	8	5	12	10	10	10	6	9	6	114
		Total	72	70	77	86	89	95	110	118	75	84	76	78	54	1,084
	Hudson South	CPS	41	51	54	68	59	62	69	74	63	80	74	61	40	796
		CWS	3	9	12	4	5	12	8	4	10	14	8	10	8	107
		Total	44	60	66	72	64	74	77	78	73	94	82	71	48	903
	Hudson West	CPS	52	72	93	87	77	76	87	90	84	84	66	67	47	982
		CWS	7	8	11	6	6	9	7	13	7	6	7	7	9	103
		Total	59	80	104	93	83	85	94	103	91	90	73	74	56	1,085
	County Totals	CPS	257	260	326	315	287	306	347	371	286	369	292	287	210	3,913
		CWS	30	43	45	34	34	35	45	44	38	40	35	36	32	491
		Total	287	303	371	349	321	341	392	415	324	409	327	323	242	4,404
HUNTERDON	Hunterdon	CPS	32	35	49	42	42	36	30	50	39	34	50	25	27	491
		CWS	1	4	3	2	2	4	3	5	7	4	6	4	5	50
		Total	33	39	52	44	44	40	33	55	46	38	56	29	32	541
	County Totals	CPS	32	35	49	42	42	36	30	50	39	34	50	25	27	491
		CWS	1	4	3	2	2	4	3	5	7	4	6	4	5	50
Total	33	39	52	44	44	40	33	55	46	38	56	29	32	541		
MERCER	Mercer North	CPS	90	103	85	97	95	87	99	129	91	131	111	103	103	1,324
		CWS	12	13	18	12	12	13	16	14	18	12	15	19	14	188
		Total	102	116	103	109	107	100	115	143	109	143	126	122	117	1,512
	Mercer South	CPS	76	91	128	101	108	76	107	106	100	96	93	104	99	1,285
		CWS	7	15	14	8	15	13	7	14	8	19	10	13	16	159
	Total	83	106	142	109	123	89	114	120	108	115	103	117	115	1,444	
	County Totals	CPS	166	194	213	198	203	163	206	235	191	227	204	207	202	2,609
CWS		19	28	32	20	27	26	23	28	26	31	25	32	30	347	
Total	185	222	245	218	230	189	229	263	217	258	229	239	232	2,956		

Data in this report is preliminary and may differ from any final report. This report is produced to ensure continuous quality improvement throughout DCF.



Table 5: Monthly Count of CPS Reports and CWS Referrals Assigned to CP&P Local Offices

County	Local Office	Type of Referral														Total
			Aug 2021	Sep 2021	Oct 2021	Nov 2021	Dec 2021	Jan 2022	Feb 2022	Mar 2022	Apr 2022	May 2022	Jun 2022	Jul 2022	Aug 2022	
MIDDLESEX	Middlesex Central	CPS	71	91	118	101	114	114	125	129	126	107	117	64	79	1356
		CWS	7	12	17	9	10	5	19	18	12	14	12	7	2	144
		Total	78	103	135	110	124	119	144	147	138	121	129	71	81	1500
	Middlesex Coastal	CPS	109	132	149	120	120	113	138	173	124	137	127	106	116	1664
		CWS	14	9	12	9	12	6	10	8	12	13	13	14	12	144
		Total	123	141	161	129	132	119	148	181	136	150	140	120	128	1808
	Middlesex West	CPS	106	127	162	106	146	109	153	171	100	147	121	83	89	1620
		CWS	10	14	14	10	6	9	19	21	14	14	14	9	10	164
		Total	116	141	176	116	152	118	172	192	114	161	135	92	99	1784
	County Totals	CPS	286	350	429	327	380	336	416	473	350	391	365	253	284	4640
		CWS	31	35	43	28	28	20	48	47	38	41	39	30	24	452
		Total	317	385	472	355	408	356	464	520	388	432	404	283	308	5092
MONMOUTH	Monmouth North	CPS	125	123	186	132	158	132	145	186	157	172	134	123	123	1896
		CWS	16	11	14	17	17	11	12	14	16	22	5	13	23	191
		Total	141	134	200	149	175	143	157	200	173	194	139	136	146	2087
	Monmouth South	CPS	109	109	120	134	108	100	114	130	110	126	136	88	110	1494
		CWS	6	7	11	11	11	17	17	12	14	12	11	12	10	151
		Total	115	116	131	145	119	117	131	142	124	138	147	100	120	1645
	County Totals	CPS	234	232	306	266	266	232	259	316	267	298	270	211	233	3390
		CWS	22	18	25	28	28	28	29	26	30	34	16	25	33	342
		Total	256	250	331	294	294	260	288	342	297	332	286	236	266	3732
	MORRIS	Morris East	CPS	70	67	74	82	73	75	101	89	72	85	85	67	70
CWS			4	8	6	7	12	11	5	8	11	7	12	9	7	107
Total			74	75	80	89	85	86	106	97	83	92	97	76	77	1117
Morris West		CPS	57	89	95	90	84	99	78	101	82	112	99	82	84	1152
		CWS	6	9	10	10	7	8	9	15	15	12	9	7	10	127
		Total	63	98	105	100	91	107	87	116	97	124	108	89	94	1279
County Totals		CPS	127	156	169	172	157	174	179	190	154	197	184	149	154	2162
		CWS	10	17	16	17	19	19	14	23	26	19	21	16	17	234
		Total	137	173	185	189	176	193	193	213	180	216	205	165	171	2396
OCEAN		Ocean North	CPS	148	162	178	172	159	154	151	158	171	172	172	161	139
	CWS		17	11	15	13	14	18	22	24	16	23	18	13	18	222
	Total		165	173	193	185	173	172	173	182	187	195	190	174	157	2319
	Ocean South	CPS	136	149	170	144	145	123	116	168	128	153	173	145	147	1897
		CWS	9	15	19	12	15	9	16	20	17	24	12	21	16	205
		Total	145	164	189	156	160	132	132	188	145	177	185	166	163	2102
	County Totals	CPS	284	311	348	316	304	277	267	326	299	325	345	306	286	3994
CWS		26	26	34	25	29	27	38	44	33	47	30	34	34	427	
Total		310	337	382	341	333	304	305	370	332	372	375	340	320	4421	
PASSAIC	Passaic Central	CPS	90	143	169	160	155	144	165	187	140	177	164	127	115	1936
		CWS	11	20	22	18	14	15	29	24	25	18	14	5	10	225
		Total	101	163	191	178	169	159	194	211	165	195	178	132	125	2161
	Passaic North	CPS	130	135	193	157	152	104	136	182	154	166	157	143	124	1933
		CWS	14	15	18	15	9	11	24	22	28	24	15	20	15	230
		Total	144	150	211	172	161	115	160	204	182	190	172	163	139	2163
	County Totals	CPS	220	278	362	317	307	248	301	369	294	343	321	270	239	3869
		CWS	25	35	40	33	23	26	53	46	53	42	29	25	25	455
		Total	245	313	402	350	330	274	354	415	347	385	350	295	264	4324
SALEM	Salem	CPS	41	66	71	50	49	58	59	70	48	72	46	51	62	743
		CWS	7	9	7	6	8	7	15	14	7	9	7	11	5	112
		Total	48	75	78	56	57	65	74	84	55	81	53	62	67	855
	County Totals	CPS	41	66	71	50	49	58	59	70	48	72	46	51	62	743
		CWS	7	9	7	6	8	7	15	14	7	9	7	11	5	112
		Total	48	75	78	56	57	65	74	84	55	81	53	62	67	855
SOMERSET	Somerset	CPS	85	128	133	125	101	103	132	149	103	132	119	102	81	1493
		CWS	12	3	15	5	10	9	9	16	4	10	13	11	11	128
		Total	97	131	148	130	111	112	141	165	107	142	132	113	92	1621
	County Totals	CPS	85	128	133	125	101	103	132	149	103	132	119	102	81	1493
		CWS	12	3	15	5	10	9	9	16	4	10	13	11	11	128
		Total	97	131	148	130	111	112	141	165	107	142	132	113	92	1621

Data in this report is preliminary and may differ from any final report. This report is produced to ensure continuous quality improvement throughout DCF.



Table 5: Monthly Count of CPS Reports and CWS Referrals Assigned to CP&P Local Offices

County	Local Office	Type of Referral														Total
			Aug 2021	Sep 2021	Oct 2021	Nov 2021	Dec 2021	Jan 2022	Feb 2022	Mar 2022	Apr 2022	May 2022	Jun 2022	Jul 2022	Aug 2022	
SUSSEX	Sussex	CPS	62	82	86	71	67	77	89	98	84	85	77	65	64	1007
		CWS	5	8	13	14	5	7	11	9	11	10	18	8	5	124
		Total	67	90	99	85	72	84	100	107	95	95	95	73	69	1131
	County Totals	CPS	62	82	86	71	67	77	89	98	84	85	77	65	64	1007
		CWS	5	8	13	14	5	7	11	9	11	10	18	8	5	124
UNION	Union Central	CPS	65	72	87	64	82	56	78	95	90	88	97	88	74	1036
		CWS	9	8	3	11	5	10	8	16	4	15	10	10	9	118
		Total	74	80	90	75	87	66	86	111	94	103	107	98	83	1154
	Union East	CPS	68	66	93	88	87	108	75	104	98	96	88	90	78	1139
		CWS	8	11	9	9	15	8	9	14	10	13	19	11	13	149
		Total	76	77	102	97	102	116	84	118	108	109	107	101	91	1288
	Union West	CPS	70	89	93	95	79	67	108	115	98	105	89	71	76	1155
		CWS	6	10	8	10	9	8	12	19	17	15	7	11	9	141
		Total	76	99	101	105	88	75	120	134	115	120	96	82	85	1296
	County Totals	CPS	203	227	273	247	248	231	261	314	286	289	274	249	228	3330
		CWS	23	29	20	30	29	26	29	49	31	43	36	32	31	408
		Total	226	256	293	277	277	257	290	363	317	332	310	281	259	3738
	WARREN	Warren	CPS	51	91	64	86	62	77	77	103	71	77	78	70	68
CWS			4	8	4	7	5	9	6	18	8	9	7	3	10	98
Total			55	99	68	93	67	86	83	121	79	86	85	73	78	1073
County Totals		CPS	51	91	64	86	62	77	77	103	71	77	78	70	68	975
		CWS	4	8	4	7	5	9	6	18	8	9	7	3	10	98
Total	55	99	68	93	67	86	83	121	79	86	85	73	78	1073		
County CPS Referral Total		CPS	3,712	4,360	5,001	4,508	4,417	4,107	4,653	5,532	4,451	4,987	4,619	4,085	3,923	58,355
County CWS Referral Total		CWS	437	524	573	506	520	484	588	675	593	615	558	542	556	7,171
County Referral Total		Total	4,149	4,884	5,574	5,014	4,937	4,591	5,241	6,207	5,044	5,602	5,177	4,627	4,479	65,526
Central Region IAIU	CPS	25	42	53	31	37	32	43	54	35	60	32	38	35	517	
	CWS	0	0	0	0	0	0	0	0	0	0	0	0	0	0	
	Total	25	42	53	31	37	32	43	54	35	60	32	38	35	517	
Metro Region IAIU	CPS	22	36	28	26	21	27	36	35	35	41	41	22	23	393	
	CWS	0	0	1	0	0	0	0	0	0	0	0	0	0	1	
	Total	22	36	29	26	21	27	36	35	35	41	41	22	23	394	
Northern Region IAIU	CPS	19	27	39	44	41	28	40	50	38	52	40	32	33	483	
	CWS	0	0	0	0	1	0	0	0	0	0	0	0	0	1	
	Total	19	27	39	44	42	28	40	50	38	52	40	32	33	484	
Southern Region IAIU	CPS	42	51	41	33	42	35	46	59	46	48	56	56	27	582	
	CWS	0	0	0	0	0	0	0	0	0	0	0	0	0	0	
	Total	42	51	41	33	42	35	46	59	46	48	56	56	27	582	
IAIU CPS Subtotal		CPS	108	156	161	134	141	122	165	198	154	201	169	148	118	1,975
IAIU CWS Subtotal		CWS	0	0	1	0	1	0	0	0	0	0	0	0	2	
IAIU Subtotal		Total	108	156	162	134	142	122	165	198	154	201	169	148	118	1,977
County and IAIU CPS Subtotal		CPS	3,820	4,516	5,162	4,642	4,558	4,229	4,818	5,730	4,605	5,188	4,788	4,233	4,041	60,330
County and IAIU CWS Subtotal		CWS	437	524	574	506	521	484	588	675	593	615	558	542	556	7,173
Unable to Determine(1)		Total	91	83	107	82	78	84	92	102	107	72	103	90	93	1,184
Other Offices		Total	0	0	0	0	1	0	4	0	0	3	2	2	12	
Grand Total		Total	4,348	5,123	5,843	5,230	5,158	4,797	5,502	6,507	5,305	5,875	5,452	4,867	4,692	68,699

(1) CPS Reports or CWS Referrals not assigned to an office through the Assignment Designee, but were assigned to an office for an assessment or investigation.