



NEW JERSEY DEPARTMENT OF
CHILDREN AND FAMILIES

Child Protection and Permanency

Monthly Screening and Investigation Report August 2023

Christine Norbut Beyer, MSW
Commissioner



Table of Contents

Table 1: NJ State Central Registry Activity: Monthly Child Abuse and Neglect Hotline Calls, Intakes and Assignments to Child Protection & Permanency (CP&P) Offices

Chart 1: CP&P Annual Trends in Child Protection Services (CPS) Reports and Child Welfare Services (CWS) Referrals

Table 2: Assignments to CP&P Offices: CPS Reports and CWS Referrals

Table 3: Source of CPS Reports and CWS Referrals

Table 4: Monthly Count of CPS Reports and CWS Referrals Assigned to Counties

Table 5: Monthly Count of CPS Reports and CWS Referrals Assigned to CP&P Local Offices

Table 1: NJ State Central Registry Activity: Monthly Child Abuse and Neglect Hotline Calls, Intakes and Assignments to CP&P Offices^{1,2,7}

2022-2023	Hotline Call Activity				Intakes Recorded in NJ SPIRIT ^{6,8}														Assignments to CP&P Offices				
	Total Calls to SCR ³	Abandon Calls ⁴	Average Time to Answer (seconds)	Resulting NJS Intakes ⁵	CPS Reports		CWS Referrals		No Action Required (NAR)		Related Information (RI)		Information & Referral (I&R)		Information Only (IO)		Unusual Incident (UIRS)		CPS Reports		CWS Referrals		Total
					n	%	n	%	n	%	n	%	n	%	n	%	n	%	n	%	n	%	
August 2022	10,651	841	101	11,162	4,103	24.7%	589	3.5%	164	1.0%	2,465	14.8%	2,077	24.5%	1,734	31.3%	30	0.0%	4,103	87.4%	589	12.6%	4,692
September 2022	12,502	1,199	129	12,828	4,810	37.5%	681	5.3%	178	1.4%	2,818	22.0%	2,724	21.2%	1,614	12.6%	3	0.0%	4,810	87.6%	680	12.4%	5,490
October 2022	13,496	1,226	142	13,916	5,356	31.9%	724	4.3%	178	1.1%	3,153	18.8%	2,938	25.1%	1,546	18.8%	21	0.0%	5,356	88.1%	725	11.9%	6,081
November 2022	12,599	1,217	156	12,974	4,852	37.4%	762	5.9%	189	1.5%	2,998	23.1%	2,658	20.5%	1,509	11.6%	6	0.0%	4,852	86.4%	762	13.6%	5,614
December 2022	11,707	673	88	12,589	4,560	36.2%	730	5.8%	125	1.0%	2,922	23.2%	2,471	19.6%	1,579	12.5%	2	0.0%	4,760	86.7%	731	13.3%	5,491
January 2023	14,498	168	188	12,390	5,215	42.1%	962	7.8%	173	1.4%	3,234	26.1%	3,011	24.3%	1,609	13.0%	2	0.0%	5,463	85.0%	962	15.0%	6,425
February 2023	13,385	1,497	162	13,589	4,921	36.2%	893	6.6%	143	1.1%	3,234	23.8%	2,923	21.5%	1,473	10.8%	2	0.0%	5,141	85.2%	891	14.8%	6,032
March 2023	15,364	1,371	112	13,768	6,064	44.0%	1,119	8.1%	191	1.4%	3,177	23.1%	3,377	24.5%	1,817	13.2%	5	0.0%	6,064	84.4%	1,121	15.6%	7,185
April 2023	12,569	866	73	13,291	5,001	37.6%	870	6.5%	197	1.5%	3,068	23.1%	2,423	18.2%	1,728	13.0%	4	0.0%	5,001	85.2%	870	14.8%	5,871
May 2023	14,992	1,368	112	15,225	6,074	39.9%	1,053	6.9%	167	1.1%	3,347	22.0%	2,998	19.7%	1,921	12.6%	7	0.0%	6,074	85.2%	1,053	14.8%	7,127
June 2023	12,861	1,069	115	13,488	4,999	37.1%	955	7.1%	155	1.1%	3,075	22.8%	2,522	18.7%	1,778	13.2%	4	0.0%	4,999	84.0%	955	16.0%	5,954
July 2023	11,377	732	90	12,202	4,576	30.6%	834	5.6%	201	1.3%	2,834	18.9%	1,996	20.0%	1,758	23.5%	3	0.0%	4,576	84.6%	834	15.4%	5,410
August 2023	11,208	536	62	12,127	4,484	37.0%	978	8.1%	229	1.9%	2,656	21.9%	2,081	17.2%	1,692	14.0%	7	0.0%	4,484	82.0%	981	18.0%	5,465
				13,042	5,001	38.3%	858	6.6%	176	1.4%	2,999	23.0%	2,631	20.2%	1,674	12.8%	7	0.0%	5,001	85.4%	858	14.6%	5,859
Overall Total	12,862	982		169,549	65,015		11,150		2,290		38,981		34,199		21,758		96		65,683	85.5%	11,154	14.5%	76,837

¹Comes from three distinct sources: (1) the Automatic Call Distribution (ACD) phone system; which keeps a count of the number of calls and call routing; (2) Monthly NJSpirit Intakes; which record decision making on calls received by hotline screeners, and (3) NJSpirit

²The number of Intakes, CPS Reports, and CWS Referrals are based on an extract from NJSpirit.

Data extracted by the Office of Research, Evaluation, and Reporting on **September 08, 2023** includes all Intakes, CPS Reports, and CWS Referrals received from **August 01, 2023 through August 31, 2023**.

³The number calls received through the ACD System that were directed to a screener from any call-in phone number.

⁴The number of calls received through the ACD System that are abandoned either while waiting in queue or while ringing.

⁵The number of Intakes entered in NJSpirit from the number of calls received.

⁶The number of Intakes recorded in NJSpirit, by type of Intake. There is not a one-to-one relationship between an ACD call and an Intake; multiple calls to State Central Registry (SCR) may result in a single Intake, or one call may result in multiple Intakes.

⁷Intake: The process of documenting: a report of alleged abuse or neglect of a child (CPS); a request for services on behalf of a child, or a referral of a child for services (CWS); a call in which the caller provides additional or clarifying information about a current service

CP&P Annual Trends in CPS Reports and CWS Referrals

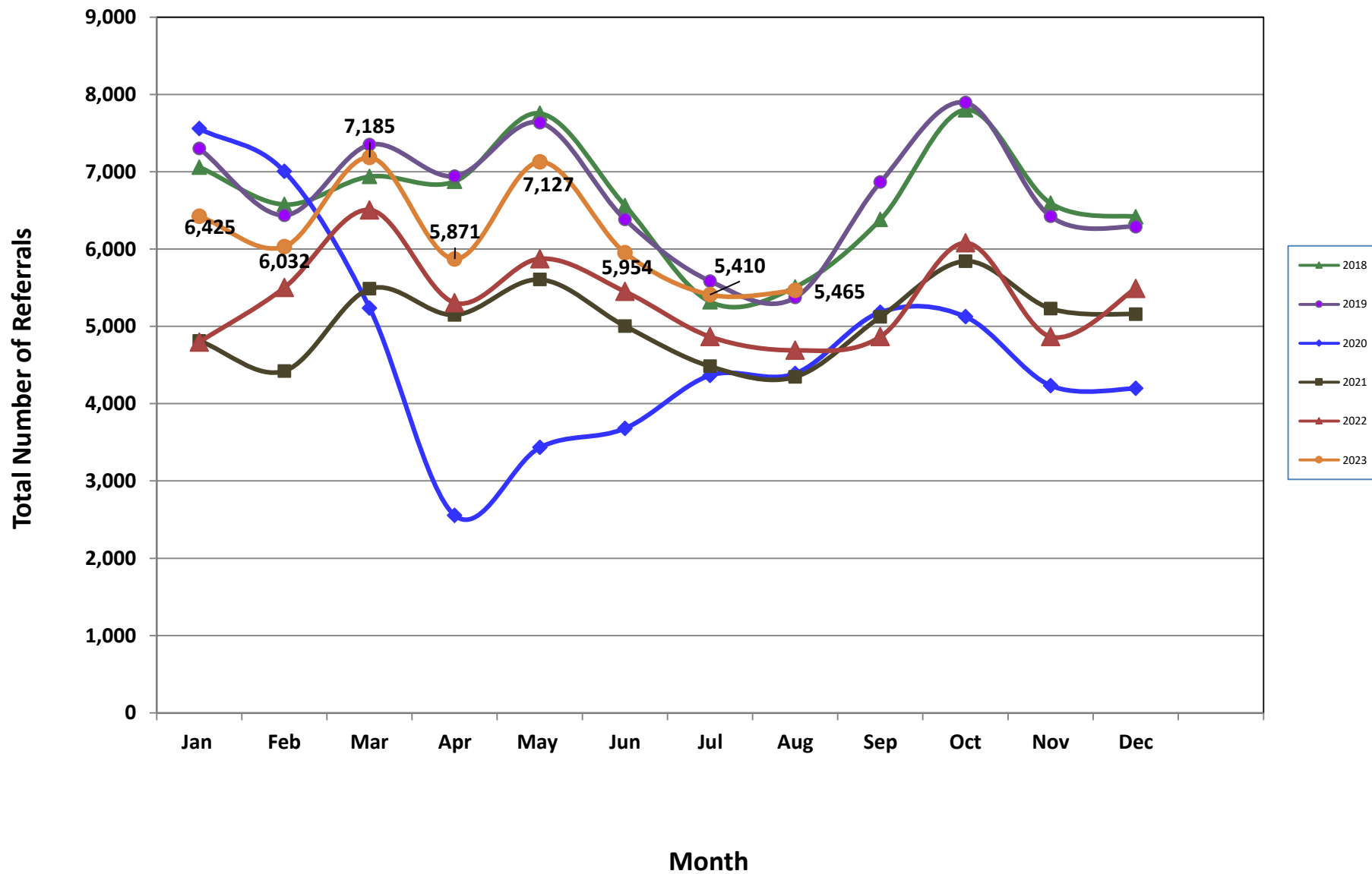


Table 2: Assignments to CP&P Offices: CPS Reports and CWS Referrals¹

Intake Date ³		CPS Reports ²	CWS Referrals ²	Total Assignments ²
2018	Jan 2018	5,276	1,784	7,060
	Feb 2018	4,933	1,644	6,577
	Mar 2018	5,212	1,727	6,939
	Apr 2018	5,275	1,601	6,876
	May 2018	5,920	1,836	7,756
	Jun 2018	4,948	1,615	6,563
	Jul 2018	4,011	1,308	5,319
	Aug 2018	4,102	1,408	5,510
	Sep 2018	4,748	1,634	6,382
	Oct 2018	5,790	2,011	7,801
	Nov 2018	4,973	1,620	6,593
	Dec 2018	4,891	1,527	6,418
	Total	60,079	19,715	79,794
2019	Jan 2019	5,443	1,858	7,301
	Feb 2019	4,811	1,628	6,439
	Mar 2019	5,677	1,824	7,501
	Apr 2019	5,313	1,630	6,943
	May 2019	5,853	1,781	7,634
	Jun 2019	4,874	1,509	6,383
	Jul 2019	4,277	1,309	5,586
	Aug 2019	4,068	1,306	5,374
	Sep 2019	5,315	1,551	6,866
	Oct 2019	5,968	1,926	7,894
	Nov 2019	4,991	1,432	6,423
	Dec 2019	4,855	1,434	6,289
	Total	61,445	19,188	80,633
2020	Jan 2020	5,715	1,842	7,557
	Feb 2020	5,380	1,624	7,004
	Mar 2020	4,172	1,065	5,237
	Apr 2020	2,149	407	2,556
	May 2020	2,897	537	3,434
	Jun 2020	3,045	636	3,681
	Jul 2020	3,628	738	4,366
	Aug 2020	3,569	822	4,391
	Sep 2020	4,153	1,030	5,183
	Oct 2020	4,257	868	5,125
	Nov 2020	3,564	670	4,234
	Dec 2020	3,517	681	4,198
	Total	46,046	10,920	56,966

Table 2: Assignments to CP&P Offices: CPS Reports and CWS Referrals¹

Intake Date ³		CPS Reports ²	CWS Referrals ²	Total Assignments ²
2021	Jan 2021	4,018	794	4,812
	Feb 2021	3,767	655	4,422
	Mar 2021	4,657	830	5,487
	Apr 2021	4,398	750	5,148
	May 2021	4,870	736	5,606
	Jun 2021	4,412	592	5,004
	Jul 2021	3,914	570	4,484
	Aug 2021	3,866	482	4,348
	Sep 2021	4,559	564	5,123
	Oct 2021	5,213	630	5,843
	Nov 2021	4,689	541	5,230
	Dec 2021	4,601	557	5,158
	Total	52,964	7,701	60,665
2022	Jan 2022	4,274	523	4,797
	Feb 2022	4,867	635	5,502
	Mar 2022	5,780	727	6,507
	Apr 2022	4,669	636	5,305
	May 2022	5,228	647	5,875
	Jun 2022	4,854	598	5,452
	Jul 2022	4,277	590	4,867
	Aug 2022	4,103	589	4,692
	Sep 2022	4,810	680	5,490
	Oct 2022	5,356	725	6,081
	Nov 2022	4,852	762	5,614
	Dec 2022	4,760	731	5,491
	Total	57,830	7,843	65,673
2023	Jan 2023	5,461	962	6,423
	Feb 2023	5,141	891	6,032
	Mar 2023	6,064	1,121	7,185
	Apr 2023	5,001	870	5,871
	May 2023	6,074	1,053	7,127
	Jun 2023	4,999	955	5,954
	Jul 2023	4,576	834	5,410
	Aug 2023	4,484	981	5,465
	Total	41,800	7,667	49,467
Grand Total		320,164	73,034	393,198

¹Source of Data: NJ SPIRIT

²A CPS Report or a CWS Referral may include multiple children in a family, with one or more allegation or request for services. In these cases, each CPS Report or CWS Referral is counted once - the CPS Report or the CWS Referral is the unit of analysis rather than the child.

³Prior to January 2014, the number of CPS Reports and CWS Referrals was based on the type of assignment of the CPS Report or CWS Referral. Beginning in January 2014, the number of CPS Reports and CWS Referrals is based on the number of CPS Reports and CWS Referrals received.

Table 3: Source of CPS Reports and CWS Referrals

	Source	Aug 2022	Sep 2022	Oct 2022	Nov 2022	Dec 2022	Jan 2023	Feb 2023	Mar 2023	Apr 2023	May 2023	Jun 2023	Jul 2023	Aug 2023		13 Month Total	
CPS Reports and CWS Referrals	School Staff	91	1,130	1,602	1,394	1,302	1,809	1,776	2,267	1,242	1,923	885	246	136	2%	15,803	21%
	Healthcare Provider	777	747	843	825	836	843	865	970	893	916	910	884	940	17%	11,249	15%
	Law Enforcement	1,617	1,421	1,514	1,422	1,416	1,525	1,391	1,548	1,566	1,820	1,782	1,928	1775	32%	20,725	27%
	Government Agency	260	243	258	240	231	298	273	309	261	316	310	294	392	7%	3,685	5%
	Parent	413	421	426	342	383	419	351	442	439	460	459	435	540	10%	5,530	7%
	Relative/Friend/Neighbor	346	337	296	313	291	304	267	338	331	413	376	377	410	8%	4,399	6%
	Anonymous	458	502	480	458	416	489	435	529	435	544	476	452	431	8%	6,105	8%
	CP&P	46	57	49	45	42	58	60	76	57	64	67	62	68	1%	751	1%
	Court/Legal	147	139	135	113	122	135	121	172	114	145	140	116	144	3%	1,743	2%
	Community Group/Individual	211	180	158	165	163	217	209	184	171	187	218	229	233	4%	2,525	3%
	Facility Staff (incl Correctional Facility)	52	35	44	45	43	50	38	51	65	71	56	59	67	1%	676	1%
	Child (Self)	34	33	21	25	24	42	30	31	31	42	36	28	33	1%	410	1%
	Other	216	224	233	199	208	210	190	240	246	208	223	271	275	5%	2,943	4%
	Daycare/Babysitter	24	21	22	28	14	26	26	28	20	18	16	29	21	0%	293	0%
Total		4,692	5,490	6,081	5,614	5,491	6,425	6,032	7,185	5,871	7,127	5,954	5,410	5,465		76,837	

Table 4: Monthly Count of CPS Reports and CWS Referrals Assigned to Counties

County														Average Number of Assignments Last 13 Months	Numerical Difference
	Aug 2022	Sep 2022	Oct 2022	Nov 2022	Dec 2022	Jan 2023	Feb 2023	Mar 2023	Apr 2023	May 2023	Jun 2023	Jul 2023	Aug 2023		
Atlantic	217	236	256	197	246	281	222	289	255	296	258	265	232	250	-33
Bergen	276	315	356	350	344	407	398	438	321	418	357	305	312	354	7
Burlington	240	305	314	332	288	335	300	347	301	340	285	273	305	305	32
Camden	415	511	499	472	461	486	481	579	483	556	502	449	463	489	14
Cape May	78	80	81	69	65	74	67	78	73	92	71	61	64	73	3
Cumberland	166	174	195	183	185	215	171	214	191	226	208	179	208	193	29
Essex	497	528	590	562	548	633	612	731	568	739	566	530	569	590	39
Gloucester	190	222	221	248	235	265	233	273	225	286	239	232	246	240	14
Hudson	242	356	352	342	370	408	388	513	384	451	386	337	345	375	8
Hunterdon	32	52	54	49	39	53	41	48	37	47	46	60	38	46	-22
Mercer	232	236	294	240	227	245	288	335	277	286	249	252	264	263	12
Middlesex	308	409	436	422	405	503	453	561	389	526	420	376	398	431	22
Monmouth	266	289	317	317	277	323	321	350	294	348	308	307	271	307	-36
Morris	171	190	230	179	195	237	221	232	203	224	219	201	166	205	-35
Ocean	320	356	391	352	341	382	350	484	388	450	400	344	357	378	13
Passaic	264	323	396	326	348	420	385	435	405	510	425	313	320	375	7
Salem	67	70	60	64	73	83	65	75	68	81	58	68	58	68	-10
Somerset	92	130	174	137	132	171	173	180	146	174	152	116	119	146	3
Sussex	69	87	114	103	85	115	87	135	90	129	108	100	97	101	-3
Union	259	265	353	301	293	345	369	397	328	404	322	296	292	325	-4
Warren	78	100	91	80	81	108	100	105	111	113	89	95	92	96	-3
County Subtotals	4,479	5,234	5,774	5,325	5,238	6,089	5,725	6,799	5,537	6,696	5,668	5,159	5,216	5,611	57
Central Region IAIU	35	47	50	56	46	53	54	77	64	89	57	49	58	57	9
Metro Region IAIU	23	34	54	33	24	44	42	57	32	67	43	32	32	40	0
Northern Region IAIU	33	42	50	50	50	57	36	69	63	81	33	29	20	47	-9
Southern Region IAIU	27	50	69	50	52	81	76	72	66	84	62	59	66	63	7
IAIU Subtotals	118	173	223	189	172	235	208	275	225	321	195	169	176	206	7
¹ Unable to Determine	93	80	84	99	81	97	99	109	102	107	89	81	73	92	-8
Other Offices	2	3	0	1	1	2	0	2	7	3	2	1	0	2	-1
Grand Total	4,692	5,490	6,081	5,614	5,492	6,423	6,032	7,185	5,871	7,127	5,954	5,410	5,465	5,910	55

¹CPS Reports or CWS Referrals not assigned to an office through the Assignment Designee, but were assigned to an office for an assessment or investigation.



Table 5: Monthly Count of CPS Reports and CWS Referrals Assigned to CP&P Local Offices

County	Local Office	Type of Referral	Aug 2022	Sep 2022	Oct 2022	Nov 2022	Dec 2022	Jan 2023	Feb 2023	Mar 2023	Apr 2023	May 2023	Jun 2023	Jul 2023	Aug 2023	Total
ATLANTIC	Atlantic East	CPS	100	106	106	90	111	114	105	114	110	130	105	114	101	1,406
		CWS	22	15	15	20	20	28	22	35	23	26	24	28	27	305
		Total	122	121	121	110	131	142	127	149	133	156	129	142	128	1,711
	Atlantic West	CPS	84	107	113	75	92	112	85	123	100	126	106	102	81	1,306
		CWS	11	8	22	12	20	27	10	17	22	14	23	21	23	230
		Total	95	115	135	87	112	139	95	140	122	140	129	123	104	1,536
	County Totals	CPS	184	213	219	165	203	226	190	237	210	256	211	216	182	2,712
		CWS	33	23	37	32	40	55	32	52	45	40	47	49	50	535
		Total	217	236	256	197	243	281	222	289	255	296	258	265	232	3,247
BERGEN	Bergen Central	CPS	82	117	137	145	126	143	149	153	116	139	144	105	107	1,663
		1,371.00	27	17	19	191	25	3177	21	3377	19	24	27	14	15	6,953
		866.00	109	134	156	166	151	163	170	181	135	163	171	119	122	1,940
	14,992.00	1,368.00	142	156	176	159	168	214	194	215	151	215	166	155	155	2,266
		CWS	25	25	24	25	25	30	34	43	35	40	20	31	35	392
		Total	167	181	200	184	193	244	228	258	186	255	186	186	190	2,658
	County Totals	CPS	224	273	313	304	294	357	343	368	267	354	310	260	262	3,929
		CWS	52	42	43	46	50	50	55	71	54	64	47	45	50	669
		Total	276	315	356	350	344	407	398	439	321	418	357	305	312	4,598
BURLINGTON	Burlington East	CPS	96	130	136	133	117	146	126	142	115	150	109	112	126	1,638
		CWS	22	26	19	20	25	32	22	28	34	20	26	26	19	319
		Total	118	156	155	153	142	178	148	170	149	170	135	138	145	1,957
	Burlington West	CPS	106	125	132	154	122	128	129	146	135	146	124	109	127	1,683
		CWS	16	24	27	25	24	29	23	32	17	24	26	26	33	326
		Total	122	149	159	179	146	157	152	178	152	170	150	135	160	2,009
	County Totals	CPS	202	255	268	287	239	274	255	288	250	296	233	221	253	3,321
		CWS	38	50	46	45	49	61	45	60	51	44	52	52	52	645
		Total	240	305	314	332	288	335	300	348	301	340	285	273	305	3,966
CAMDEN	Camden Central	CPS	112	124	136	97	97	116	107	141	96	123	118	102	112	1,481
		CWS	20	22	20	15	21	18	19	22	26	22	24	22	18	269
		Total	132	146	156	112	118	134	126	163	122	145	142	124	130	1,750
	Camden East	CPS	68	111	93	121	96	110	102	105	106	124	91	87	94	1,308
		CWS	9	17	20	16	15	12	27	19	16	16	19	29	18	233
		Total	77	128	113	137	111	122	129	124	122	140	110	116	112	1,541
	Camden North	CPS	86	110	109	87	101	89	98	118	108	101	110	76	92	1,285
		CWS	14	12	16	32	20	19	25	33	16	17	26	25	29	284
		Total	100	122	125	119	121	108	123	151	124	118	136	101	121	1,569
	Camden South	CPS	92	102	93	86	92	103	92	114	94	122	91	86	83	1,250
		CWS	14	13	12	18	19	19	11	26	21	31	23	22	17	246
		Total	106	115	105	104	111	122	103	140	115	153	114	108	100	1,496
	County Totals	CPS	358	447	431	391	386	418	399	478	404	470	410	351	381	5,324
		CWS	57	64	68	81	75	68	82	100	79	86	92	98	82	1,032
		Total	415	511	499	472	461	486	481	578	483	556	502	449	463	6,356
CAPE MAY	Cape May	CPS	66	67	71	63	55	66	55	65	57	73	52	55	53	798
		CWS	12	13	10	6	8	8	12	13	16	19	19	6	11	153
		Total	78	80	81	69	63	74	67	78	73	92	71	61	64	951
	County Totals	CPS	66	67	71	63	55	66	55	65	57	73	52	55	53	798
		CWS	12	13	10	6	8	8	12	13	16	19	19	6	11	153
Total		78	80	81	69	63	74	67	78	73	92	71	61	64	951	
CUMBERLAND	Cumberland East	CPS	66	56	82	78	61	87	62	65	58	78	62	71	85	911
		CWS	12	13	5	3	13	17	15	16	9	18	24	11	14	170
		Total	78	69	87	81	74	104	77	81	67	96	86	82	99	1,081
	Cumberland West	CPS	78	93	91	95	98	99	81	111	103	120	97	83	89	1,238
		CWS	10	12	17	7	13	12	13	22	21	10	26	14	20	197
		Total	88	105	108	102	111	111	94	133	124	130	123	97	109	1,435
	County Totals	CPS	144	149	173	173	159	186	143	176	161	198	159	154	174	2,149
CWS		22	25	22	10	26	29	28	38	30	28	50	25	34	367	
Total		166	174	195	183	185	215	171	214	191	226	209	179	208	2,516	

Data in this report is preliminary and may differ from any final report. This report is produced to ensure continuous quality improvement throughout DCF.



Table 5: Monthly Count of CPS Reports and CWS Referrals Assigned to CP&P Local Offices

County	Local Office	Type of Referral	Aug 2022	Sep 2022	Oct 2022	Nov 2022	Dec 2022	Jan 2023	Feb 2023	Mar 2023	Apr 2023	May 2023	Jun 2023	Jul 2023	Aug 2023	Total
ESSEX	Essex Central	CPS	79	85	89	70	73	69	71	88	68	85	53	63	70	963
		CWS	9	10	12	19	16	13	16	21	10	30	19	9	24	208
		Total	88	95	101	89	89	82	87	109	78	115	72	72	94	1,171
	Essex North	CPS	60	86	92	85	104	101	118	119	94	122	92	69	74	1,216
		CWS	5	8	16	13	15	18	17	16	16	26	24	11	16	201
		Total	65	94	108	98	119	119	135	135	110	148	116	80	90	1,417
	Essex South	CPS	83	66	90	87	93	99	84	105	84	97	84	94	75	1141
		CWS	9	11	19	12	7	23	14	37	24	15	23	11	18	223
		Total	92	77	109	99	100	122	98	142	108	112	107	105	93	1364
	Newark Center City	CPS	73	74	93	77	69	77	71	83	75	95	93	79	81	1040
		CWS	10	8	14	13	12	13	13	17	9	26	11	11	22	179
		Total	83	82	107	90	81	90	84	100	84	121	104	90	103	1219
	Newark Northeast	CPS	74	79	77	82	68	90	89	95	91	109	114	85	69	1122
		CWS	11	14	8	16	14	23	18	21	9	23	21	15	18	211
		Total	85	93	85	98	82	113	107	116	100	132	135	100	87	1333
	Newark South	CPS	75	73	74	76	68	93	81	114	77	101	106	68	75	1081
		CWS	9	14	6	12	8	17	20	15	11	10	22	15	27	186
		Total	84	87	80	88	76	110	101	129	88	111	128	83	102	1267
	County Totals	CPS	444	463	515	477	475	529	514	604	489	609	542	458	444	6563
		CWS	53	65	75	85	72	107	98	127	79	130	120	72	125	1208
		Total	497	528	590	562	547	636	612	731	568	739	662	530	569	7771
GLOUCESTER	Gloucester East	CPS	78	74	75	100	97	102	77	113	84	87	77	79	91	1134
		CWS	11	15	10	14	21	16	12	19	15	16	19	8	13	189
		Total	89	89	85	114	118	118	89	132	99	103	96	87	104	1323
	Gloucester West	CPS	85	110	114	114	99	125	123	121	116	150	67	127	118	1469
		CWS	16	23	22	20	18	21	21	20	10	33	13	18	24	259
		Total	101	133	136	134	117	146	144	141	126	183	80	145	142	1728
	County Totals	CPS	163	184	189	214	196	227	200	234	200	237	144	206	209	2603
CWS		27	38	32	34	39	37	33	39	25	49	32	26	37	448	
Total		190	222	221	248	235	264	233	273	225	286	176	232	246	3051	
HUDSON	Hudson Central	CPS	75	93	82	89	85	95	104	113	105	121	67	71	75	1175
		CWS	9	11	15	20	19	13	19	23	20	22	15	21	26	233
		Total	84	104	97	109	104	108	123	136	125	143	82	92	101	1408
	Hudson North	CPS	48	86	88	69	80	86	81	100	85	106	41	76	59	1005
		CWS	6	15	5	9	7	20	18	24	13	15	5	12	15	164
		Total	54	101	93	78	87	106	99	124	98	121	46	88	74	1169
	Hudson South	CPS	40	70	59	53	70	80	60	107	55	71	116	72	71	924
		CWS	8	7	14	12	10	16	12	22	5	13	18	20	15	172
		Total	48	77	73	65	80	96	72	129	60	84	134	92	86	1096
	Hudson West	CPS	47	65	80	76	82	80	78	105	79	91	97	58	70	1008
		CWS	9	9	9	14	17	18	16	19	22	12	18	7	14	184
		Total	56	74	89	90	99	98	94	124	101	103	115	65	84	1192
	County Totals	CPS	210	314	309	287	317	341	323	425	324	389	321	277	275	4112
		CWS	32	42	43	55	53	67	65	88	60	62	56	60	70	753
Total		242	356	352	342	370	408	388	513	384	451	377	337	345	4865	
HUNTERDON	Hunterdon	CPS	27	49	50	40	35	46	36	41	32	41	100	48	35	580
		CWS	5	3	4	9	4	7	5	7	5	6	24	12	3	94
		Total	32	52	54	49	39	53	41	48	37	47	124	60	38	674
	County Totals	CPS	27	49	50	40	35	46	36	41	32	41	100	48	35	580
		CWS	5	3	4	9	4	7	5	7	5	6	24	12	3	94
Total	32	52	54	49	39	53	41	48	37	47	124	60	38	674		
MERCER	Mercer North	CPS	103	122	130	108	106	101	124	119	121	140	143	111	105	1533
		CWS	14	10	11	23	17	15	27	15	27	24	14	17	30	244
		Total	117	132	141	131	123	116	151	134	148	164	157	128	135	1777
	Mercer South	CPS	99	90	129	98	96	106	113	172	108	101	116	112	101	1441
		CWS	16	14	24	11	8	23	23	29	21	21	23	12	28	253
		Total	115	104	153	109	104	129	136	201	129	122	139	124	129	1694
	County Totals	CPS	202	212	259	206	202	207	237	291	229	241	259	223	206	2974
CWS		30	24	35	34	25	38	50	44	48	45	37	29	58	497	
Total		232	236	294	240	227	245	287	335	277	286	296	252	264	3471	

Data in this report is preliminary and may differ from any final report. This report is produced to ensure continuous quality improvement throughout DCF.



Table 5: Monthly Count of CPS Reports and CWS Referrals Assigned to CP&P Local Offices

County	Local Office	Type of Referral	Aug 2022	Sep 2022	Oct 2022	Nov 2022	Dec 2022	Jan 2023	Feb 2023	Mar 2023	Apr 2023	May 2023	Jun 2023	Jul 2023	Aug 2023	Total
MIDDLESEX	Middlesex Central	CPS	79	100	109	91	102	119	135	150	107	134	123	85	90	1424
		CWS	2	17	21	15	11	20	15	29	14	30	25	22	14	235
		Total	81	117	130	106	113	139	150	179	121	164	148	107	104	1659
	Middlesex Coastal	CPS	116	137	139	153	139	167	130	160	117	163	133	121	124	1799
		CWS	12	19	14	16	13	30	23	24	15	27	27	24	35	279
		Total	128	156	153	169	152	197	153	184	132	190	160	145	159	2078
	Middlesex West	CPS	89	114	135	131	120	136	134	165	116	136	88	106	114	1584
		CWS	10	22	18	16	21	32	17	34	20	36	18	18	21	283
		Total	99	136	153	147	141	168	151	199	136	172	106	124	135	1867
	County Totals	CPS	284	351	383	375	361	422	399	475	340	433	344	312	328	4807
		CWS	24	58	53	47	45	82	55	87	49	93	70	64	70	797
		Total	308	409	436	422	406	504	454	562	389	526	414	376	398	5604
MONMOUTH	Monmouth North	CPS	123	142	187	158	143	154	160	167	131	173	101	150	121	1910
		CWS	23	11	15	24	17	26	27	26	24	23	12	29	29	286
		Total	146	153	202	182	160	180	187	193	155	196	113	179	150	2196
	Monmouth South	CPS	110	112	106	119	102	113	112	138	114	134	62	114	104	1440
		CWS	10	24	9	16	15	30	22	19	25	18	13	14	17	232
		Total	120	136	115	135	117	143	134	157	139	152	75	128	121	1672
	County Totals	CPS	233	254	293	277	245	267	272	305	245	307	163	264	225	3350
		CWS	33	35	24	40	32	56	49	45	49	41	25	43	46	518
		Total	266	289	317	317	277	323	321	350	294	348	188	307	271	3868
MORRIS	Morris East	CPS	70	82	99	88	83	92	78	83	81	90	93	87	65	1091
		CWS	7	5	10	13	13	17	16	22	14	10	20	11	8	166
		Total	77	87	109	101	96	109	94	105	95	100	113	98	73	1257
	Morris West	CPS	84	95	102	68	89	111	100	104	86	103	74	86	78	1180
		CWS	10	8	19	10	10	19	27	24	22	21	9	17	15	211
		Total	94	103	121	78	99	130	127	128	108	124	83	103	93	1391
	County Totals	CPS	154	177	201	156	172	203	178	187	167	193	167	173	143	2271
		CWS	17	13	29	23	23	36	43	46	36	31	29	28	23	377
		Total	171	190	230	179	195	239	221	233	203	224	196	201	166	2648
OCEAN	Ocean North	CPS	139	163	190	161	165	156	177	220	177	184	184	159	148	2223
		CWS	18	17	21	28	15	33	23	38	20	40	23	27	29	332
		Total	157	180	211	189	180	189	200	258	197	224	207	186	177	2555
	Ocean South	CPS	147	163	163	148	141	170	136	204	160	195	170	136	148	2081
		CWS	16	13	17	15	20	23	14	22	31	31	23	22	32	279
		Total	163	176	180	163	161	193	150	226	191	226	193	158	180	2360
	County Totals	CPS	286	326	353	309	306	326	313	424	337	379	354	295	296	4304
		CWS	34	30	38	43	35	56	37	60	51	71	46	49	61	611
		Total	320	356	391	352	341	382	350	484	388	450	400	344	357	4915
PASSAIC	Passaic Central	CPS	115	157	161	140	148	165	156	180	186	223	198	121	105	2055
		CWS	10	21	24	25	25	26	26	44	27	41	34	29	35	367
		Total	125	178	185	165	173	191	182	224	213	264	232	150	140	2422
	Passaic North	CPS	124	126	187	135	157	192	172	181	165	206	154	136	145	2080
		CWS	15	19	24	26	18	37	31	30	27	40	39	27	35	368
		Total	139	145	211	161	175	229	203	211	192	246	193	163	180	2448
	County Totals	CPS	239	283	348	275	305	357	328	361	351	429	352	257	250	4135
		CWS	25	40	48	51	43	63	57	74	54	81	73	56	70	735
		Total	264	323	396	326	348	420	385	435	405	510	425	313	320	4870
SALEM	Salem	CPS	62	61	53	56	67	68	60	61	55	67	50	53	50	763
		CWS	5	9	7	8	6	15	5	14	13	14	8	15	8	127
		Total	67	70	60	64	73	83	65	75	68	81	58	68	58	890
	County Totals	CPS	62	61	53	56	67	68	60	61	55	67	50	53	50	763
		CWS	5	9	7	8	6	15	5	14	13	14	8	15	8	127
Total	67	70	60	64	73	83	65	75	68	81	58	68	58	890		
SOMERSET	Somerset	CPS	81	116	152	124	123	150	146	151	127	145	133	104	97	1649
		CWS	11	14	22	13	10	21	27	29	19	29	19	12	22	248
		Total	92	130	174	137	133	171	173	180	146	174	152	116	119	1897
	County Totals	CPS	81	116	152	124	123	150	146	151	127	145	133	104	97	1649
		CWS	11	14	22	13	10	21	27	29	19	29	19	12	22	248
Total	92	130	174	137	133	171	173	180	146	174	152	116	119	1897		

Data in this report is preliminary and may differ from any final report. This report is produced to ensure continuous quality improvement throughout DCF.



Table 5: Monthly Count of CPS Reports and CWS Referrals Assigned to CP&P Local Offices

County	Local Office	Type of Referral														Total	
			Aug 2022	Sep 2022	Oct 2022	Nov 2022	Dec 2022	Jan 2023	Feb 2023	Mar 2023	Apr 2023	May 2023	Jun 2023	Jul 2023	Aug 2023		
SUSSEX	Sussex	CPS	64	78	100	89	75	97	70	117	71	110	88	93	82	1134	
		CWS	5	9	14	14	10	18	17	18	19	19	20	7	15	185	
		Total	69	87	114	103	85	115	87	135	90	129	108	100	97	1319	
	County Totals	CPS	64	78	100	89	75	97	70	117	71	110	88	93	82	1134	
		CWS	5	9	14	14	10	18	17	18	19	19	20	7	15	185	
		Total	69	87	114	103	85	115	87	135	90	129	108	100	97	1319	
UNION	Union Central	CPS	74	72	118	89	88	107	101	108	92	118	71	71	81	1190	
		CWS	9	8	11	12	13	19	20	17	14	19	13	19	13	187	
		Total	83	80	129	101	101	126	121	125	106	137	84	90	94	1377	
	Union East	CPS	78	69	95	80	66	95	104	109	90	119	102	93	79	1179	
		CWS	13	14	10	12	7	12	21	22	10	12	13	9	24	179	
		Total	91	83	105	92	73	107	125	131	100	131	115	102	103	1358	
	Union West	CPS	76	87	105	90	96	103	107	122	106	115	98	86	84	1275	
		CWS	9	15	14	18	23	10	17	19	16	21	25	18	11	216	
		Total	85	102	119	108	119	113	124	141	122	136	123	104	95	1491	
	County Totals	CPS	228	228	318	259	250	305	312	339	288	352	271	250	244	3644	
		CWS	31	37	35	42	43	41	58	58	40	52	51	46	48	582	
		Total	259	265	353	301	293	346	370	397	328	404	322	296	292	4226	
	WARREN	Warren	CPS	68	88	86	72	69	93	92	84	96	92	82	80	76	1078
			CWS	10	12	5	8	12	15	8	22	15	21	7	15	16	166
			Total	78	100	91	80	81	108	100	106	111	113	89	95	92	1244
County Totals		CPS	68	88	86	72	69	93	92	84	96	92	82	80	76	1078	
		CWS	10	12	5	8	12	15	8	22	15	21	7	15	16	166	
		Total	78	100	91	80	81	108	100	106	111	113	89	95	92	1244	
County CPS Referral Total		CPS	3,923	4,588	5,084	4,599	4,534	5,165	4,865	5,711	4,700	5,671	4,745	4,350	4,265	62,200	
County CWS Referral Total		CWS	556	646	690	726	700	930	861	1,092	837	1,025	924	809	951	10,747	
County Referral Total		Total	4,479	5,234	5,774	5,325	5,234	6,095	5,726	6,803	5,537	6,696	5,669	5,159	5,216	72,947	
Central Region IAIU	CPS	35	47	50	56	47	53	55	77	64	89	56	49	49	727		
	CWS	0	0	0	0	0	0	0	0	0	0	0	0	0	0		
	Total	35	47	50	56	47	53	55	77	64	89	56	49	49	727		
Metro Region IAIU	CPS	23	34	54	33	25	45	44	57	32	67	43	32	32	521		
	CWS	0	0	0	0	0	0	0	0	0	0	0	0	0	0		
	Total	23	34	54	33	25	45	44	57	32	67	43	32	32	521		
Northern Region IAIU	CPS	33	42	50	50	56	58	39	69	63	81	33	28	28	630		
	CWS	0	0	0	0	0	0	0	0	0	0	0	1	0	1		
	Total	33	42	50	50	56	58	39	69	63	81	33	29	28	631		
Southern Region IAIU	CPS	27	50	69	50	53	81	77	72	66	84	62	59	59	809		
	CWS	0	0	0	0	0	0	0	0	0	0	0	0	0	0		
	Total	27	50	69	50	53	81	77	72	66	84	62	59	59	809		
IAIU CPS Subtotal		CPS	118	173	223	189	181	237	215	275	225	321	194	168	168	2,687	
IAIU CWS Subtotal		CWS	0	0	0	0	0	0	0	0	0	0	1	0	1		
IAIU Subtotal		Total	118	173	223	189	181	237	215	275	225	321	194	169	168	2,688	
County and IAIU CPS Subtotal		CPS	4,041	4,761	5,307	4,788	4,715	5,402	5,080	5,986	4,925	5,992	4,939	4,518	4,433	64,887	
County and IAIU CWS Subtotal		CWS	556	646	690	726	700	930	861	1,092	837	1,025	924	810	951	10,748	
Unable to Determine(1)		Total	93	80	84	99	75	91	89	105	102	107	89	81	81	1,176	
Other Offices		Total	2	3	0	1	1	2	2	2	7	3	2	1	0	26	
Grand Total		Total	4,692	5,490	6,081	5,614	5,491	6,425	6,032	7,185	5,871	7,127	5,954	5,410	5,465	76,837	

(1)CPS Reports or CWS Referrals not assigned to an office through the Assignment Designee, but were assigned to an office for an assessment or investigation.