



Child Protection and Permanency

Monthly Screening and Investigation Report September 2016

Allison Blake, Ph.D., L.S.W.
Commissioner

October 17, 2016



Table of Contents

Table 1: NJ State Central Registry Activity: Monthly Child Abuse and Neglect Hotline Calls, Intakes and Assignments to Child Protection & Permanency (CP&P) Offices

Chart 1: CP&P Annual Trends in Child Protection Services (CPS) Reports and Child Welfare Services (CWS) Referrals

Table 2: Assignments to CP&P Offices: CPS Reports and CWS Referrals

Table 3: Source of CPS Reports and CWS Referrals

Table 4: Monthly Count of CPS Reports and CWS Referrals Assigned to Counties

Table 5: Monthly Count of CPS Reports and CWS Referrals Assigned to CP&P Local Offices

Table 1: NJ State Central Registry Activity: Monthly Child Abuse and Neglect Hotline Calls, Intakes and Assignments to CP&P Offices^{1,2,7}

2015 - 2016	Hotline Call Activity				Intakes Recorded in NJ SPIRIT ^{6,8}												Assignments to CP&P Offices				
	Total Calls to SCR ³	Abandon Calls ⁴	Average Time to Answer (seconds)	Resulting NJS Intakes ⁵	CPS Reports		CWS Referrals		No Action Required (NAR)		Related Information (RI)		Information & Referral (I&R)		Information Only (IO)		CPS Reports		CWS Referrals		Total
					n	%	n	%	n	%	n	%	n	%	n	%	n	%	n	%	
September 2015	13,335	351	24	14,955	4,776	31.9%	1,494	10.0%	467	3.1%	3,908	26.1%	1,601	10.7%	2,709	18.1%	4,776	76.2%	1,495	23.8%	6,271
October 2015	14,304	315	18	15,821	5,139	32.5%	1,620	10.2%	332	2.1%	4,073	25.7%	1,834	11.6%	2,823	17.8%	5,139	76.0%	1,619	24.0%	6,758
November 2015	13,321	445	20	14,527	4,417	30.4%	1,475	10.2%	347	2.4%	3,942	27.1%	1,513	10.4%	2,833	19.5%	4,417	74.9%	1,477	25.1%	5,894
December 2015	13,186	603	28	14,236	4,530	31.8%	1,544	10.8%	370	2.6%	3,709	26.1%	1,567	11.0%	2,516	17.7%	4,530	74.6%	1,544	25.4%	6,074
January 2016	13,499	551	40	14,655	4,686	32.0%	1,573	10.7%	282	1.9%	4,020	27.4%	1,482	10.1%	2,612	17.8%	4,686	74.9%	1,571	25.1%	6,257
February 2016	13,927	590	40	15,143	4,974	32.8%	1,620	10.7%	419	2.8%	3,836	25.3%	1,627	10.7%	2,667	17.6%	4,974	75.4%	1,622	24.6%	6,596
March 2016	14,064	446	32	15,619	5,000	32.0%	1,671	10.7%	428	2.7%	3,912	25.0%	1,812	11.6%	2,796	17.9%	5,000	75.0%	1,669	25.0%	6,669
April 2016	13,995	448	29	15,326	5,065	33.0%	1,541	10.1%	348	2.3%	3,774	24.6%	1,742	11.4%	2,856	18.6%	5,065	76.7%	1,542	23.3%	6,607
May 2016	14,389	413	26	15,806	5,238	33.1%	1,634	10.3%	393	2.5%	3,902	24.7%	1,852	11.7%	2,787	17.6%	5,238	76.2%	1,633	23.8%	6,871
June 2016	13,304	396	26	14,592	4,602	31.5%	1,460	10.0%	336	2.3%	3,687	25.3%	1,808	12.4%	2,699	18.5%	4,602	75.9%	1,461	24.1%	6,063
July 2016	11,304	338	25	12,531	3,663	29.2%	1,186	9.5%	295	2.4%	3,477	27.7%	1,376	11.0%	2,534	20.2%	3,663	75.5%	1,187	24.5%	4,850
August 2016	11,766	270	18	13,169	3,941	29.9%	1,308	9.9%	491	3.7%	3,311	25.1%	1,471	11.2%	2,647	20.1%	3,941	75.1%	1,307	24.9%	5,248
September 2016	13,277	383	25	14,637	4,654	31.8%	1,557	10.6%	305	2.1%	3,868	26.4%	1,699	11.6%	2,554	17.4%	4,654	74.9%	1,559	25.1%	6,213
	13,359	427	27	14,694	4,668	31.8%	1,514	10.3%	370	2.5%	3,801	25.9%	1,645	11.2%	2,695	18.3%	4,668	75.5%	1,514	24.5%	6,182
Overall Total	173,671	5,549		191,017	60,685		19,683		4,813		49,419		21,384		35,033		60,685	75.5%	19,686	24.5%	80,371

¹ Comes from three distinct sources: (1) the Automatic Call Distribution (ACD) phone system; which keeps a count of the number of calls and call routing; (2) Monthly NJSpirit Intakes; which record decision making on calls received by hotline screeners, and (3) NJSpirit extracts of assigned CWS Referrals and CPS Reports.

² The number of Intakes, CPS Reports, and CWS Referrals are based on an extract from NJSpirit. Data extracted by the Office of Research, Evaluation, and Reporting on **October 17, 2016** includes all Intakes, CPS Reports, and CWS Referrals received from **September 1, 2016 through September 30, 2016**.

³ The number calls received through the ACD System that were directed to a screener from any call-in phone number.

⁴ The number of calls received through the ACD System that are abandoned either while waiting in queue or while ringing.

⁵ The number of Intakes entered in NJSpirit from the number of calls received.

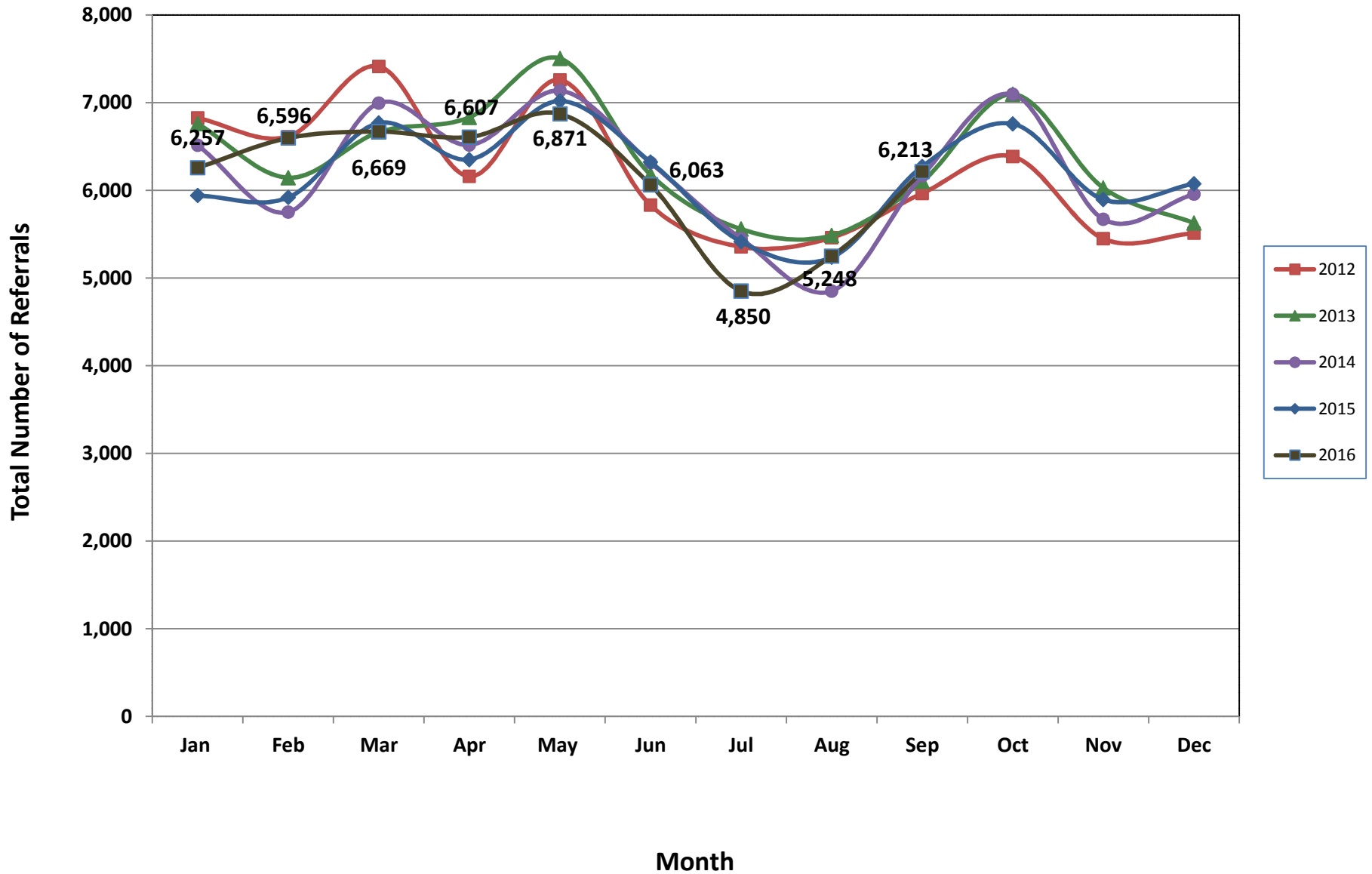
⁶ The number of Intakes recorded in NJSpirit, by type of Intake. There is not a one-to-one relationship between an ACD call and an Intake; multiple calls to State Central Registry (SCR) may result in a single Intake, or one call may result in multiple Intakes.

⁷ Intake: The process of documenting: a report of alleged abuse or neglect of a child (CPS); a request for services on behalf of a child, or a referral of a child for services (CWS); a call in which the caller provides additional or clarifying information about a current service case or active investigation (RI); informing a caller of, or referring a caller to, services available from other private or public sources (I&R); a call that requires no action by CP&P (NAR); or a response to a simple inquiry (IO).

⁸ NJ SPIRIT: NJ Statewide Protection Investigation and Reporting Information Tool case management system



CP&P Annual Trends in CPS Reports and CWS Referrals



The data contained in this report is considered preliminary and as a result, these figures might be different than the final reported figures. The data is produced for continuous quality improvement.

Table 2: Assignments to CP&P Offices: CPS Reports and CWS Referrals¹

Intake Date ³		CPS Reports ²	CWS Referrals ²	Total Assignments ²
2012	Jan 2012	5,530	1,294	6,824
	Feb 2012	5,358	1,255	6,613
	Mar 2012	5,985	1,428	7,413
	Apr 2012	4,899	1,259	6,158
	May 2012	5,874	1,385	7,259
	Jun 2012	4,640	1,190	5,830
	Jul 2012	4,254	1,101	5,355
	Aug 2012	4,325	1,135	5,460
	Sep 2012	4,769	1,196	5,965
	Oct 2012	5,178	1,207	6,385
	Nov 2012	4,310	1,138	5,448
	Dec 2012	4,394	1,116	5,510
	Total	59,516	14,704	74,220
2013	Jan 2013	5,464	1,296	6,760
	Feb 2013	4,966	1,177	6,143
	Mar 2013	5,355	1,309	6,664
	Apr 2013	5,430	1,402	6,832
	May 2013	5,993	1,510	7,503
	Jun 2013	4,947	1,230	6,177
	Jul 2013	4,330	1,228	5,558
	Aug 2013	4,330	1,155	5,485
	Sep 2013	4,851	1,251	6,102
	Oct 2013	5,614	1,481	7,095
	Nov 2013	4,694	1,334	6,028
	Dec 2013	4,397	1,229	5,626
	Total	60,371	15,602	75,973
2014	Jan 2014	5,097	1,416	6,513
	Feb 2014	4,457	1,295	5,752
	Mar 2014	5,408	1,586	6,994
	Apr 2014	5,049	1,467	6,516
	May 2014	5,501	1,635	7,136
	Jun 2014	4,796	1,517	6,313
	Jul 2014	4,202	1,247	5,449
	Aug 2014	3,629	1,222	4,851
	Sep 2014	4,668	1,498	6,166
	Oct 2014	5,509	1,586	7,095
	Nov 2014	4,254	1,416	5,670
	Dec 2014	4,509	1,447	5,956
	Total	57,079	17,332	74,411

Table 2: Assignments to CP&P Offices: CPS Reports and CWS Referrals¹

Intake Date ³		CPS Reports ²	CWS Referrals ²	Total Assignments ²
2015	Jan 2015	4,549	1,391	5,940
	Feb 2015	4,574	1,345	5,919
	Mar 2015	5,187	1,580	6,767
	Apr 2015	4,967	1,384	6,351
	May 2015	5,457	1,561	7,018
	Jun 2015	4,887	1,436	6,323
	Jul 2015	4,140	1,273	5,413
	Aug 2015	3,978	1,256	5,234
	Sep 2015	4,776	1,495	6,271
	Oct 2015	5,139	1,619	6,758
	Nov 2015	4,417	1,477	5,894
	Dec 2015	4,530	1,544	6,074
	Total	56,601	17,361	73,962
2016	Jan 2016	4,686	1,571	6,257
	Feb 2016	4,974	1,622	6,596
	Mar 2016	5,000	1,669	6,669
	Apr 2016	5,065	1,542	6,607
	May 2016	5,238	1,633	6,871
	Jun 2016	4,602	1,461	6,063
	Jul 2016	3,663	1,187	4,850
	Aug 2016	3,941	1,307	5,248
	Sep 2016	4,654	1,559	6,213
	Total	41,823	13,551	55,374
Grand Total		275,390	78,550	353,940

¹Source of Data: NJ SPIRIT

²A CPS Report or a CWS Referral may include multiple children in a family, with one or more allegation or request for services. In these cases, each CPS Report or CWS Referral is counted once - the CPS Report or the CWS Referral is the unit of analysis rather than the child.

³Prior to January 2014, the number of CPS Reports and CWS Referrals was based on the type of assignment of the CPS Report or CWS Referral. Beginning in January 2014, the number of CPS Reports and CWS Referrals is based on the number of CPS Reports and CWS Referrals received.

Table 3: Source of CPS Reports and CWS Referrals

CPS Reports and CWS Referrals	Source	Sep 2015	Oct 2015	Nov 2015	Dec 2015	Jan 2016	Feb 2016	Mar 2016	Apr 2016	May 2016	Jun 2016	Jul 2016	Aug 2016	Sep 2016		13 Month Total	
	School Staff	1,123	1,763	1,454	1,596	1,569	1,900	1,690	1,646	1,765	982	143	87	1,150	19%	16,868	21%
	Healthcare Provider	780	825	766	780	830	852	892	895	823	814	771	811	775	12%	10,614	13%
	Law Enforcement	1,040	1,003	909	910	910	953	1,052	1,030	1,056	1,152	1,048	1,093	1,013	16%	13,169	16%
	Government Agency	437	426	376	389	412	394	448	410	419	439	407	509	445	7%	5,511	7%
	Parent	589	518	451	495	529	504	503	566	597	546	521	591	555	9%	6,965	9%
	Relative/Friend/Neighbor	592	526	466	455	446	454	424	473	553	540	472	544	594	10%	6,539	8%
	Anonymous	739	710	609	587	628	612	676	662	777	697	560	611	710	11%	8,578	11%
	CP&P	123	137	121	112	113	133	155	104	133	120	112	132	125	2%	1,620	2%
	Court/Legal	115	119	108	108	119	132	154	137	141	124	143	130	135	2%	1,665	2%
	Community Group/Individual	243	306	240	255	294	274	262	269	236	238	262	286	272	4%	3,437	4%
	Facility Staff (incl Correctional Facility)	78	83	83	81	91	80	76	88	64	68	70	94	95	2%	1,051	1%
	Child (Self)	47	34	31	21	41	37	36	46	37	38	46	50	37	1%	501	1%
	Other	348	288	265	274	259	253	286	257	252	285	274	297	287	5%	3,625	5%
	Daycare/Babysitter	17	20	15	11	16	18	15	24	18	20	21	13	20	0%	228	0%
Total	6,271	6,758	5,894	6,074	6,257	6,596	6,669	6,607	6,871	6,063	4,850	5,248	6,213		80,371		

Table 4: Monthly Count of CPS Reports and CWS Referrals Assigned to Counties

County														Average Number of Assignments Last 13 Months	Aug 16 to Sep 16 Numerical Difference
	Sep 2015	Oct 2015	Nov 2015	Dec 2015	Jan 2016	Feb 2016	Mar 2016	April 2016	May 2016	Jun 2016	Jul 2016	Aug 2016	Sep 2016		
Atlantic	295	267	227	255	251	284	265	250	291	221	184	234	252	252	18
Bergen	345	411	336	394	333	392	369	321	385	354	251	264	340	346	76
Burlington	307	303	258	268	275	315	309	321	321	260	238	262	309	288	47
Camden	516	609	461	498	558	551	527	573	608	532	391	465	534	525	69
Cape May	92	112	75	89	83	65	79	94	82	67	71	78	73	82	-5
Cumberland	231	215	177	174	195	179	206	219	245	202	184	183	209	201	26
Essex	635	675	660	625	685	701	752	743	717	644	534	573	626	659	53
Gloucester	247	300	245	261	251	252	285	267	233	234	212	223	244	250	21
Hudson	399	451	342	431	424	450	412	403	481	400	304	279	403	398	124
Hunterdon	58	52	37	39	53	58	46	62	38	42	36	38	44	46	6
Mercer	263	324	254	252	265	263	276	278	282	255	227	234	272	265	38
Middlesex	400	466	387	435	419	439	479	492	470	387	325	331	426	420	95
Monmouth	364	361	343	308	328	413	361	373	366	353	272	327	347	347	20
Morris	250	239	216	215	238	228	217	222	247	228	146	153	225	217	72
Ocean	376	383	401	336	403	378	366	365	415	354	316	344	353	368	9
Passaic	422	461	422	449	421	504	510	455	456	401	299	331	397	425	66
Salem	102	72	89	81	94	67	94	89	82	80	63	67	89	82	22
Somerset	155	153	157	143	141	160	165	152	169	160	139	112	149	150	37
Sussex	89	104	103	95	95	113	105	94	88	91	90	87	101	97	14
Union	276	304	257	318	299	331	350	336	373	295	255	244	323	305	79
Warren	101	107	81	78	93	87	77	99	106	88	62	78	97	89	19
County Subtotals	5,923	6,369	5,528	5,744	5,904	6,230	6,250	6,208	6,455	5,648	4,599	4,907	5,813	5,814	906
Central Region IAIU	53	52	56	62	44	53	46	59	55	53	33	54	52	52	-2
Metro Region IAIU	36	50	48	46	43	60	64	60	68	61	36	32	46	50	14
Northern Region IAIU	45	66	58	44	58	58	66	71	70	66	27	45	62	57	17
Southern Region IAIU	60	83	72	61	79	64	76	90	73	92	44	72	66	72	-6
IAIU Subtotals	194	251	234	213	224	235	252	280	266	272	140	203	226	230	23
Unable to Determine¹	153	136	131	114	128	126	165	115	149	140	110	137	168	136	31
Other Offices	1	2	1	3	1	5	2	4	1	3	1	1	6	2	5
Grand Total	6,271	6,758	5,894	6,074	6,257	6,596	6,669	6,607	6,871	6,063	4,850	5,248	6,213	6,182	965

¹CPS Reports or CWS Referrals not assigned to an office through the Assignment Designee, but were assigned to an office for an assessment or investigation.



Table 5: Monthly Count of CPS Reports and CWS Referrals Assigned to CP&P Local Offices

County	Local Office	Type of Referral	Sep 2015	Oct 2015	Nov 2015	Dec 2015	Jan 2016	Feb 2016	Mar 2016	Apr 2016	May 2016	Jun 2016	Jul 2016	Aug 2016	Sep 2016	Total
ATLANTIC	Atlantic East	CPS	134	115	107	113	110	133	144	97	129	108	90	102	109	1,491
		CWS	35	30	32	36	43	34	27	35	41	34	25	44	38	454
		Total	169	145	139	149	153	167	171	132	170	142	115	146	147	1,945
	Atlantic West	CPS	94	101	70	82	70	88	71	95	94	66	51	72	82	1,036
		CWS	32	21	18	24	28	29	23	23	27	13	18	16	23	295
		Total	126	122	88	106	98	117	94	118	121	79	69	88	105	1,331
	County Totals	CPS	228	216	177	195	180	221	215	192	223	174	141	174	191	2,527
		CWS	67	51	50	60	71	63	50	58	68	47	43	60	61	749
		Total	295	267	227	255	251	284	265	250	291	221	184	234	252	3,276
BERGEN	Bergen Central	CPS	98	117	98	119	128	107	121	101	134	121	63	73	90	1,370
		CWS	36	50	37	41	39	51	48	32	40	39	37	29	28	507
		Total	134	167	135	160	167	158	169	133	174	160	100	102	118	1,877
	Bergen South	CPS	157	177	144	164	121	174	150	136	162	143	109	115	157	1,909
		CWS	54	67	57	70	45	60	50	52	49	51	42	47	65	709
		Total	211	244	201	234	166	234	200	188	211	194	151	162	222	2,618
	County Totals	CPS	255	294	242	283	249	281	271	237	296	264	172	188	247	3,279
		CWS	90	117	94	111	84	111	98	84	89	90	79	76	93	1,216
		Total	345	411	336	394	333	392	369	321	385	354	251	264	340	4,495
BURLINGTON	Burlington East	CPS	110	121	93	118	117	127	105	131	128	84	94	94	92	1,414
		CWS	36	31	28	20	32	39	38	32	39	34	34	33	49	445
		Total	146	152	121	138	149	166	143	163	167	118	128	127	141	1,859
	Burlington West	CPS	120	119	107	101	92	109	124	130	117	109	87	101	121	1,437
		CWS	41	32	30	29	34	40	42	28	37	33	23	34	47	450
		Total	161	151	137	130	126	149	166	158	154	142	110	135	168	1,887
	County Totals	CPS	230	240	200	219	209	236	229	261	245	193	181	195	213	2,851
		CWS	77	63	58	49	66	79	80	60	76	67	57	67	96	895
		Total	307	303	258	268	275	315	309	321	321	260	238	262	309	3,746
CAMDEN	Camden Central	CPS	116	148	101	104	127	119	104	136	123	122	92	97	115	1,504
		CWS	36	38	34	24	34	34	44	36	38	53	36	41	40	488
		Total	152	186	135	128	161	153	148	172	161	175	128	138	155	1,992
	Camden East	CPS	109	123	100	106	108	106	104	114	123	94	86	102	104	1,379
		CWS	21	21	32	27	28	27	16	27	33	28	31	21	34	346
		Total	130	144	132	133	136	133	120	141	156	122	117	123	138	1,725
	Camden North	CPS	95	120	83	108	104	105	102	132	115	95	56	79	97	1,291
		CWS	33	40	17	34	40	45	46	27	47	34	18	39	42	462
		Total	128	160	100	142	144	150	148	159	162	129	74	118	139	1,753
	Camden South	CPS	83	88	77	75	85	86	77	79	97	80	56	67	86	1,036
		CWS	23	31	17	20	32	29	34	22	32	26	16	19	16	317
		Total	106	119	94	95	117	115	111	101	129	106	72	86	102	1,353
	County Totals	CPS	403	479	361	393	424	416	387	461	458	391	290	345	402	5,210
		CWS	113	130	100	105	134	135	140	112	150	141	101	120	132	1,613
		Total	516	609	461	498	558	551	527	573	608	532	391	465	534	6,823
CAPE MAY	Cape May	CPS	72	87	51	64	61	51	57	72	68	51	51	65	62	812
		CWS	20	25	24	25	22	14	22	22	14	16	20	13	11	248
		Total	92	112	75	89	83	65	79	94	82	67	71	78	73	1,060
	County Totals	CPS	72	87	51	64	61	51	57	72	68	51	51	65	62	812
		CWS	20	25	24	25	22	14	22	22	14	16	20	13	11	248
		Total	92	112	75	89	83	65	79	94	82	67	71	78	73	1,060
CUMBERLAND	Cumberland East	CPS	61	42	39	46	59	52	48	64	81	61	46	40	48	687
		CWS	18	26	18	14	12	13	16	18	14	16	18	20	17	220
		Total	79	68	57	60	71	65	64	82	95	77	64	60	65	907
	Cumberland West	CPS	123	116	88	83	99	96	116	102	115	101	96	102	113	1,350
		CWS	29	31	32	31	25	18	26	35	35	24	24	21	31	362
		Total	152	147	120	114	124	114	142	137	150	125	120	123	144	1,712
	County Totals	CPS	184	158	127	129	158	148	164	166	196	162	142	142	161	2,037
		CWS	47	57	50	45	37	31	42	53	49	40	42	41	48	582
		Total	231	215	177	174	195	179	206	219	245	202	184	183	209	2,619

Data in this report is preliminary and may differ from any final report. This report is produced to ensure continuous quality improvement throughout DCF.



Table 5: Monthly Count of CPS Reports and CWS Referrals Assigned to CP&P Local Offices

County	Local Office	Type of Referral	Sep 2015	Oct 2015	Nov 2015	Dec 2015	Jan 2016	Feb 2016	Mar 2016	Apr 2016	May 2016	Jun 2016	Jul 2016	Aug 2016	Sep 2016	Total
ESSEX	Essex Central	CPS	80	105	87	72	82	85	108	101	108	112	75	77	91	1,183
		CWS	26	42	37	39	43	37	42	38	41	23	27	27	24	446
		Total	106	147	124	111	125	122	150	139	149	135	102	104	115	1,629
	Essex North	CPS	53	53	54	66	53	73	75	48	59	54	58	57	59	762
		CWS	22	23	21	30	29	25	35	21	19	24	29	14	27	319
		Total	75	76	75	96	82	98	110	69	78	78	87	71	86	1,081
	Essex South	CPS	66	57	58	56	63	79	66	56	60	62	47	46	55	771
		CWS	25	23	16	17	27	22	26	26	24	34	19	21	25	305
		Total	91	80	74	73	90	101	92	82	84	96	66	67	80	1076
	Newark Center City	CPS	89	83	82	78	91	95	87	110	97	95	64	69	86	1126
		CWS	29	35	36	39	26	30	42	45	34	25	24	25	28	418
		Total	118	118	118	117	117	125	129	155	131	120	88	94	114	1544
	Newark Northeast	CPS	101	83	81	65	92	89	99	115	93	72	56	94	90	1130
		CWS	25	37	34	33	39	30	36	27	47	24	22	29	28	411
		Total	126	120	115	98	131	119	135	142	140	96	78	123	118	1541
	Newark South	CPS	88	100	106	92	107	96	104	121	87	80	80	84	79	1224
		CWS	31	34	48	38	33	40	32	35	48	39	33	30	34	475
		Total	119	134	154	130	140	136	136	156	135	119	113	114	113	1699
County Totals	CPS	477	481	468	429	488	517	539	551	504	475	380	427	460	6196	
	CWS	158	194	192	196	197	184	213	192	213	169	154	146	166	2374	
	Total	635	675	660	625	685	701	752	743	717	644	534	573	626	8570	
GLOUCESTER	Gloucester East	CPS	98	109	91	101	97	93	112	99	84	89	75	84	84	1216
		CWS	24	26	17	25	35	24	38	31	26	26	28	26	23	349
		Total	122	135	108	126	132	117	150	130	110	115	103	110	107	1565
	Gloucester West	CPS	94	133	103	109	91	102	106	115	87	85	90	79	110	1304
		CWS	31	32	34	26	28	33	29	22	36	34	19	34	27	385
		Total	125	165	137	135	119	135	135	137	123	119	109	113	137	1689
	County Totals	CPS	192	242	194	210	188	195	218	214	171	174	165	163	194	2520
		CWS	55	58	51	51	63	57	67	53	62	60	47	60	50	734
		Total	247	300	245	261	251	252	285	267	233	234	212	223	244	3254
HUDSON	Hudson Central	CPS	62	72	59	79	75	89	74	67	83	52	61	56	72	901
		CWS	25	26	16	25	23	28	25	31	23	34	21	10	32	319
		Total	87	98	75	104	98	117	99	98	106	86	82	66	104	1220
	Hudson North	CPS	91	86	74	87	95	77	96	88	101	77	62	52	81	1067
		CWS	22	31	29	30	37	35	34	27	31	30	23	18	30	377
		Total	113	117	103	117	132	112	130	115	132	107	85	70	111	1444
	Hudson South	CPS	66	93	61	93	60	81	60	68	86	71	52	56	71	918
		CWS	31	28	22	28	20	25	23	21	45	30	28	30	24	355
		Total	97	121	83	121	80	106	83	89	131	101	80	86	95	1273
	Hudson West	CPS	77	82	60	74	87	90	71	79	87	84	49	41	67	948
		CWS	25	33	21	15	27	25	29	22	25	22	8	16	26	294
		Total	102	115	81	89	114	115	100	101	112	106	57	57	93	1242
County Totals	CPS	296	333	254	333	317	337	301	302	357	284	224	205	291	3834	
	CWS	103	118	88	98	107	113	111	101	124	116	80	74	112	1345	
	Total	399	451	342	431	424	450	412	403	481	400	304	279	403	5179	
HUNTERDON	Hunterdon	CPS	41	40	27	27	35	41	33	49	29	33	28	25	33	441
		CWS	17	12	10	12	18	17	13	13	9	9	8	13	11	162
		Total	58	52	37	39	53	58	46	62	38	42	36	38	44	603
	County Totals	CPS	41	40	27	27	35	41	33	49	29	33	28	25	33	441
	CWS	17	12	10	12	18	17	13	13	9	9	8	13	11	162	
	Total	58	52	37	39	53	58	46	62	38	42	36	38	44	603	
MERCER	Mercer North	CPS	87	115	79	89	91	98	100	95	93	103	92	89	105	1236
		CWS	33	40	46	33	37	29	33	23	27	32	21	27	48	429
		Total	120	155	125	122	128	127	133	118	120	135	113	116	153	1665
	Mercer South	CPS	107	125	98	100	102	108	102	121	124	91	81	91	74	1324
		CWS	36	44	31	30	35	28	41	39	38	29	33	27	45	456
		Total	143	169	129	130	137	136	143	160	162	120	114	118	119	1780
County Totals	CPS	194	240	177	189	193	206	202	216	217	194	173	180	179	2560	
	CWS	69	84	77	63	72	57	74	62	65	61	54	54	93	885	
	Total	263	324	254	252	265	263	276	278	282	255	227	234	272	3445	

Data in this report is preliminary and may differ from any final report. This report is produced to ensure continuous quality improvement throughout DCF.



Table 5: Monthly Count of CPS Reports and CWS Referrals Assigned to CP&P Local Offices

County	Local Office	Type of Referral	Monthly Counts													Total
			Sep 2015	Oct 2015	Nov 2015	Dec 2015	Jan 2016	Feb 2016	Mar 2016	Apr 2016	May 2016	Jun 2016	Jul 2016	Aug 2016	Sep 2016	
MIDDLESEX	Middlesex Central	CPS	86	86	66	91	70	78	77	72	97	80	57	56	103	1019
		CWS	28	27	20	27	25	23	25	32	31	26	19	16	15	314
		Total	114	113	86	118	95	101	102	104	128	106	76	72	118	1333
	Middlesex Coastal	CPS	110	132	110	119	104	129	152	141	136	101	107	89	111	1541
		CWS	33	35	38	33	41	46	39	39	29	35	26	36	35	465
		Total	143	167	148	152	145	175	191	180	165	136	133	125	146	2006
	Middlesex West	CPS	105	132	118	114	132	131	133	151	135	117	90	95	123	1576
		CWS	38	54	35	51	47	32	53	57	42	28	26	39	39	541
		Total	143	186	153	165	179	163	186	208	177	145	116	134	162	2117
	County Totals	CPS	301	350	294	324	306	338	362	364	368	298	254	240	337	4136
CWS		99	116	93	111	113	101	117	128	102	89	71	91	89	1320	
Total		400	466	387	435	419	439	479	492	470	387	325	331	426	5456	
MONMOUTH	Monmouth North	CPS	159	160	134	135	135	184	145	150	165	154	105	128	137	1891
		CWS	58	51	50	47	35	44	38	47	40	36	29	49	43	567
		Total	217	211	184	182	170	228	183	197	205	190	134	177	180	2458
	Monmouth South	CPS	118	118	118	95	115	130	137	124	121	127	102	118	134	1557
		CWS	29	32	41	31	43	55	41	52	40	36	36	32	33	501
		Total	147	150	159	126	158	185	178	176	161	163	138	150	167	2058
	County Totals	CPS	277	278	252	230	250	314	282	274	286	281	207	246	271	3448
		CWS	87	83	91	78	78	99	79	99	80	72	65	81	76	1068
		Total	364	361	343	308	328	413	361	373	366	353	272	327	347	4516
	MORRIS	Morris East	CPS	85	95	68	47	73	77	81	63	74	75	48	37	73
CWS			29	26	27	27	24	34	27	23	35	22	22	11	22	329
Total			114	121	95	74	97	111	108	86	109	97	70	48	95	1225
Morris West		CPS	100	87	90	98	114	83	73	98	102	86	56	77	90	1154
		CWS	36	31	31	43	27	34	36	38	36	45	20	28	40	445
		Total	136	118	121	141	141	117	109	136	138	131	76	105	130	1599
County Totals		CPS	185	182	158	145	187	160	154	161	176	161	104	114	163	2050
		CWS	65	57	58	70	51	68	63	61	71	67	42	39	62	774
		Total	250	239	216	215	238	228	217	222	247	228	146	153	225	2824
OCEAN		Ocean North	CPS	118	145	161	125	142	146	150	157	180	152	142	142	130
	CWS		43	32	57	43	63	50	43	42	46	44	29	39	43	574
	Total		161	177	218	168	205	196	193	199	226	196	171	181	173	2464
	Ocean South	CPS	170	162	135	130	151	137	130	127	145	120	115	117	138	1777
		CWS	45	44	48	38	47	45	43	39	44	38	30	46	42	549
		Total	215	206	183	168	198	182	173	166	189	158	145	163	180	2326
	County Totals	CPS	288	307	296	255	293	283	280	284	325	272	257	259	268	3667
		CWS	88	76	105	81	110	95	86	81	90	82	59	85	85	1123
		Total	376	383	401	336	403	378	366	365	415	354	316	344	353	4790
	PASSAIC	Passaic Central	CPS	159	161	163	178	144	202	169	166	175	183	122	121	152
CWS			55	91	66	68	68	89	89	66	82	55	41	42	53	865
Total			214	252	229	246	212	291	258	232	257	238	163	163	205	2960
Passaic North		CPS	142	153	141	137	152	159	170	162	151	120	96	121	129	1833
		CWS	66	56	52	66	57	54	82	61	48	43	40	47	63	735
		Total	208	209	193	203	209	213	252	223	199	163	136	168	192	2568
County Totals		CPS	301	314	304	315	296	361	339	328	326	303	218	242	281	3928
		CWS	121	147	118	134	125	143	171	127	130	98	81	89	116	1600
		Total	422	461	422	449	421	504	510	455	456	401	299	331	397	5528
SALEM		Salem	CPS	77	47	75	58	72	43	78	61	64	57	52	48	63
	CWS		25	25	14	23	22	24	16	28	18	23	11	19	26	274
	Total		102	72	89	81	94	67	94	89	82	80	63	67	89	1069
	County Totals	CPS	77	47	75	58	72	43	78	61	64	57	52	48	63	795
		CWS	25	25	14	23	22	24	16	28	18	23	11	19	26	274
		Total	102	72	89	81	94	67	94	89	82	80	63	67	89	1069
SOMERSET	Somerset	CPS	120	121	121	104	104	120	124	115	136	129	107	88	115	1504
		CWS	35	32	36	39	37	40	41	37	33	31	32	24	34	451
		Total	155	153	157	143	141	160	165	152	169	160	139	112	149	1955
	County Totals	CPS	120	121	121	104	104	120	124	115	136	129	107	88	115	1504
		CWS	35	32	36	39	37	40	41	37	33	31	32	24	34	451
Total	155	153	157	143	141	160	165	152	169	160	139	112	149	1955		

Data in this report is preliminary and may differ from any final report. This report is produced to ensure continuous quality improvement throughout DCF.



Table 5: Monthly Count of CPS Reports and CWS Referrals Assigned to CP&P Local Offices

County	Local Office	Type of Referral	Sep 2015	Oct 2015	Nov 2015	Dec 2015	Jan 2016	Feb 2016	Mar 2016	Apr 2016	May 2016	Jun 2016	Jul 2016	Aug 2016	Sep 2016	Total
SUSSEX	Sussex	CPS	73	83	72	68	82	83	76	77	71	68	74	69	79	975
		CWS	16	21	31	27	13	30	29	17	17	23	16	18	22	280
		Total	89	104	103	95	95	113	105	94	88	91	90	87	101	1255
	County Totals	CPS	73	83	72	68	82	83	76	77	71	68	74	69	79	975
		CWS	16	21	31	27	13	30	29	17	17	23	16	18	22	280
		Total	89	104	103	95	95	113	105	94	88	91	90	87	101	1255
UNION	Union Central	CPS	65	67	64	71	74	85	78	89	105	67	60	55	78	958
		CWS	24	24	14	27	32	29	30	24	23	29	24	27	26	333
		Total	89	91	78	98	106	114	108	113	128	96	84	82	104	1291
	Union East	CPS	67	74	68	91	75	78	99	99	100	79	67	66	74	1037
		CWS	27	35	26	34	25	30	25	28	25	28	26	23	28	360
		Total	94	109	94	125	100	108	124	127	125	107	93	89	102	1397
	Union West	CPS	70	77	58	65	65	79	84	73	87	60	57	49	90	914
		CWS	23	27	27	30	28	30	34	23	33	32	21	24	27	359
		Total	93	104	85	95	93	109	118	96	120	92	78	73	117	1273
	County Totals	CPS	202	218	190	227	214	242	261	261	292	206	184	170	242	2909
		CWS	74	86	67	91	85	89	89	75	81	89	71	74	81	1052
		Total	276	304	257	318	299	331	350	336	373	295	255	244	323	3961
WARREN	Warren	CPS	81	87	58	55	72	64	60	68	74	67	49	68	76	879
		CWS	20	20	23	23	21	23	17	31	32	21	13	10	21	275
		Total	101	107	81	78	93	87	77	99	106	88	62	78	97	1154
	County Totals	CPS	81	87	58	55	72	64	60	68	74	67	49	68	76	879
		CWS	20	20	23	23	21	23	17	31	32	21	13	10	21	275
		Total	101	107	81	78	93	87	77	99	106	88	62	78	97	1154
County CPS Referral Total	CPS	4,477	4,797	4,098	4,252	4,378	4,657	4,632	4,714	4,882	4,237	3,453	3,653	4,328	56,558	
County CWS Referral Total	CWS	1,446	1,572	1,430	1,492	1,526	1,573	1,618	1,494	1,573	1,411	1,146	1,254	1,485	19,020	
County Referral Total	Total	5,923	6,369	5,528	5,744	5,904	6,230	6,250	6,208	6,455	5,648	4,599	4,907	5,813	75,578	
Central Region IAIU	CPS	53	52	56	62	44	53	46	59	55	53	33	54	52	672	
	CWS	0	0	0	0	0	0	0	0	0	0	0	0	0	0	
	Total	53	52	56	62	44	53	46	59	55	53	33	54	52	672	
Metro Region IAIU	CPS	36	50	48	46	43	60	64	60	68	61	36	32	46	650	
	CWS	0	0	0	0	0	0	0	0	0	0	0	0	0	0	
	Total	36	50	48	46	43	60	64	60	68	61	36	32	46	650	
Northern Region IAIU	CPS	45	66	58	44	58	58	66	71	70	66	27	45	62	736	
	CWS	0	0	0	0	0	0	0	0	0	0	0	0	0	0	
	Total	45	66	58	44	58	58	66	71	70	66	27	45	62	736	
Southern Region IAIU	CPS	60	83	72	61	79	64	76	90	73	92	44	72	66	932	
	CWS	0	0	0	0	0	0	0	0	0	0	0	0	0	0	
	Total	60	83	72	61	79	64	76	90	73	92	44	72	66	932	
IAIU CPS Subtotal	CPS	194	251	234	213	224	235	252	280	266	272	140	203	226	2,990	
IAIU CWS Subtotal	CWS	0	0	0	0	0	0	0	0	0	0	0	0	0	0	
IAIU Subtotal	Total	194	251	234	213	224	235	252	280	266	272	140	203	226	2,990	
County and IAIU CPS Subtotal	CPS	4,671	5,048	4,332	4,465	4,602	4,892	4,884	4,994	5,148	4,509	3,593	3,856	4,554	59,548	
County and IAIU CWS Subtotal	CWS	1,446	1,573	1,430	1,492	1,526	1,573	1,618	1,494	1,573	1,411	1,146	1,254	1,485	19,021	
Unable to Determine⁽¹⁾	Total	153	136	131	114	128	126	165	115	149	140	110	137	168	1,772	
Other Offices	Total	1	1	1	3	1	5	2	4	1	3	1	1	6	30	
Grand Total	Total	6,271	6,758	5,894	6,074	6,257	6,596	6,669	6,607	6,871	6,063	4,850	5,248	6,213	80,371	

⁽¹⁾CPS Reports or CWS Referrals not assigned to an office through the Assignment Designee, but were assigned to an office for an assessment or investigation.