



Child Protection and Permanency

Monthly Screening and Investigation Report September 2017

Allison Blake, Ph.D., L.S.W.
Commissioner

October 4, 2017



NEW JERSEY DEPARTMENT OF
CHILDREN AND FAMILIES

Table of Contents

Table 1: NJ State Central Registry Activity: Monthly Child Abuse and Neglect Hotline Calls, Intakes and Assignments to Child Protection & Permanency (CP&P) Offices

Chart 1: CP&P Annual Trends in Child Protection Services (CPS) Reports and Child Welfare Services (CWS) Referrals

Table 2: Assignments to CP&P Offices: CPS Reports and CWS Referrals

Table 3: Source of CPS Reports and CWS Referrals

Table 4: Monthly Count of CPS Reports and CWS Referrals Assigned to Counties

Table 5: Monthly Count of CPS Reports and CWS Referrals Assigned to CP&P Local Offices

Table 1: NJ State Central Registry Activity: Monthly Child Abuse and Neglect Hotline Calls, Intakes and Assignments to CP&P Offices^{1,2,7}

2016 - 2017	Hotline Call Activity				Intakes Recorded in NJ SPIRIT ^{6,8}												Assignments to CP&P Offices				
	Total Calls to SCR ³	Abandon Calls ⁴	Average Time to Answer (seconds)	Resulting NJS Intakes ⁵	CPS Reports		CWS Referrals		No Action Required (NAR)		Related Information (RI)		Information & Referral (I&R)		Information Only (IO)		CPS Reports		CWS Referrals		Total
					n	%	n	%	n	%	n	%	n	%	n	%	n	%	n	%	
September 2016	13,277	383	25	14,637	4,654	31.8%	1,557	10.6%	305	2.1%	3,868	26.4%	1,699	11.6%	2,554	17.4%	4,654	74.9%	1,559	25.1%	6,213
October 2016	13,924	387	24	15,418	4,935	32.0%	1,623	10.5%	368	2.4%	4,100	26.6%	1,767	11.5%	2,625	17.0%	4,935	75.3%	1,622	24.7%	6,557
November 2016	13,310	441	30	14,666	4,677	31.9%	1,551	10.6%	300	2.0%	3,969	27.1%	1,667	11.4%	2,502	17.1%	4,677	75.1%	1,552	24.9%	6,229
December 2016	13,294	424	32	14,626	4,762	32.6%	1,579	10.8%	352	2.4%	3,916	26.8%	1,598	10.9%	2,419	16.5%	4,762	75.1%	1,580	24.9%	6,342
January 2017	14,182	603	45	15,375	5,111	33.2%	1,708	11.1%	321	2.1%	4,221	27.5%	1,670	10.9%	2,344	15.2%	5,111	75.0%	1,708	25.0%	6,819
February 2017	13,261	524	39	14,478	4,716	32.6%	1,503	10.4%	258	1.8%	3,882	26.8%	1,645	11.4%	2,474	17.1%	4,716	75.8%	1,504	24.2%	6,220
March 2017	14,751	538	33	16,228	5,349	33.0%	1,844	11.4%	426	2.6%	4,173	25.7%	1,892	11.7%	2,544	15.7%	5,349	74.4%	1,843	25.6%	7,192
April 2017	13,397	575	36	14,760	4,790	32.5%	1,489	10.1%	420	2.8%	4,037	27.4%	1,607	10.9%	2,417	16.4%	4,790	76.3%	1,490	23.7%	6,280
May 2017	13,397	575	36	17,359	5,847	33.7%	1,919	11.1%	378	2.2%	4,509	26.0%	2,028	11.7%	2,678	15.4%	5,847	75.3%	1,919	24.7%	7,766
June 2017	13,832	617	41	15,143	4,853	32.0%	1,664	11.0%	476	3.1%	4,063	26.8%	1,642	10.8%	2,445	16.1%	4,853	74.5%	1,665	25.5%	6,518
July 2017	12,245	710	57	13,369	3,814	28.5%	1,389	10.4%	336	2.5%	3,877	29.0%	1,436	10.7%	2,517	18.8%	3,814	73.3%	1,389	26.7%	5,203
August 2017	11,672	445	38	12,927	3,866	29.9%	1,338	10.4%	393	3.0%	3,447	26.7%	1,535	11.9%	2,348	18.2%	3,866	74.3%	1,340	25.7%	5,206
September 2017	13,450	570	40	14,750	4,719	32.0%	1,642	11.1%	381	2.6%	3,951	26.8%	1,700	11.5%	2,357	16.0%	4,719	74.2%	1,643	25.8%	6,362
	13,384	522	37	14,903	4,776	32.1%	1,600	10.7%	363	2.4%	4,001	26.8%	1,684	11.3%	2,479	16.6%	4,776	74.9%	1,601	25.1%	6,377
Overall Total	173,992	6,792		193,736	62,093		20,806		4,714		52,013		21,886		32,224		62,093	74.9%	20,814	25.1%	82,907

¹ Comes from three distinct sources: (1) the Automatic Call Distribution (ACD) phone system; which keeps a count of the number of calls and call routing; (2) Monthly NJSpirit Intakes; which record decision making on calls received by hotline screeners, and (3) NJSpirit extracts of assigned CWS Referrals and CPS Reports.

² The number of Intakes, CPS Reports, and CWS Referrals are based on an extract from NJSpirit. Data extracted by the Office of Research, Evaluation, and Reporting on **October 4, 2017** includes all Intakes, CPS Reports, and CWS Referrals received from **September 1, 2017 through October 1, 2017**.

³ The number calls received through the ACD System that were directed to a screener from any call-in phone number.

⁴ The number of calls received through the ACD System that are abandoned either while waiting in queue or while ringing.

⁵ The number of Intakes entered in NJSpirit from the number of calls received.

⁶ The number of Intakes recorded in NJSpirit, by type of Intake. There is not a one-to-one relationship between an ACD call and an Intake; multiple calls to State Central Registry (SCR) may result in a single Intake, or one call may result in multiple Intakes.

⁷ Intake: The process of documenting: a report of alleged abuse or neglect of a child (CPS); a request for services on behalf of a child, or a referral of a child for services (CWS); a call in which the caller provides additional or clarifying information about a current service case or active investigation (RI); informing a caller of, or referring a caller to, services available from other private or public sources (I&R); a call that requires no action by CP&P (NAR); or a response to a simple inquiry (IO).

⁸ NJ SPIRIT: NJ Statewide Protection Investigation and Reporting Information Tool case management system

CP&P Annual Trends in CPS Reports and CWS Referrals

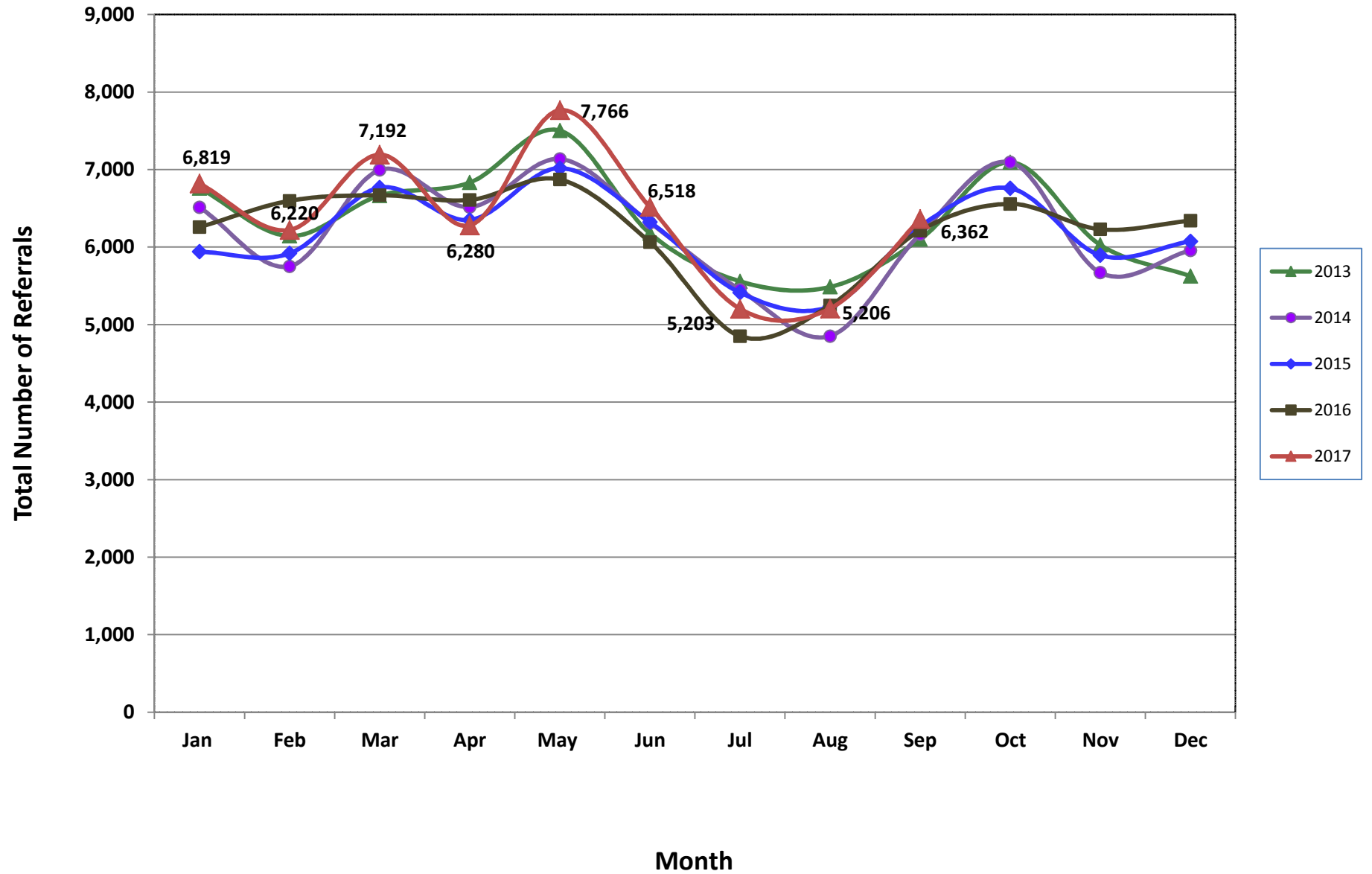


Table 2: Assignments to CP&P Offices: CPS Reports and CWS Referrals¹

Intake Date ³		CPS Reports ²	CWS Referrals ²	Total Assignments ²
2013	Jan 2013	5,464	1,296	6,760
	Feb 2013	4,966	1,177	6,143
	Mar 2013	5,355	1,309	6,664
	Apr 2013	5,430	1,402	6,832
	May 2013	5,993	1,510	7,503
	Jun 2013	4,947	1,230	6,177
	Jul 2013	4,330	1,228	5,558
	Aug 2013	4,330	1,155	5,485
	Sep 2013	4,851	1,251	6,102
	Oct 2013	5,614	1,481	7,095
	Nov 2013	4,694	1,334	6,028
	Dec 2013	4,397	1,229	5,626
	Total	60,371	15,602	75,973
2014	Jan 2014	5,097	1,416	6,513
	Feb 2014	4,457	1,295	5,752
	Mar 2014	5,408	1,586	6,994
	Apr 2014	5,049	1,467	6,516
	May 2014	5,501	1,635	7,136
	Jun 2014	4,796	1,517	6,313
	Jul 2014	4,202	1,247	5,449
	Aug 2014	3,629	1,222	4,851
	Sep 2014	4,668	1,498	6,166
	Oct 2014	5,509	1,586	7,095
	Nov 2014	4,254	1,416	5,670
	Dec 2014	4,509	1,447	5,956
	Total	57,079	17,332	74,411
2015	Jan 2015	4,549	1,391	5,940
	Feb 2015	4,574	1,345	5,919
	Mar 2015	5,187	1,580	6,767
	Apr 2015	4,967	1,384	6,351
	May 2015	5,457	1,561	7,018
	Jun 2015	4,887	1,436	6,323
	Jul 2015	4,140	1,273	5,413
	Aug 2015	3,978	1,256	5,234
	Sep 2015	4,776	1,495	6,271
	Oct 2015	5,139	1,619	6,758
	Nov 2015	4,417	1,477	5,894
	Dec 2015	4,530	1,544	6,074
	Total	56,601	17,361	73,962

Table 2: Assignments to CP&P Offices: CPS Reports and CWS Referrals¹

Intake Date ³		CPS Reports ²	CWS Referrals ²	Total Assignments ²
2016	Jan 2016	4,686	1,571	6,257
	Feb 2016	4,974	1,622	6,596
	Mar 2016	5,000	1,669	6,669
	Apr 2016	5,065	1,542	6,607
	May 2016	5,238	1,633	6,871
	Jun 2016	4,602	1,461	6,063
	Jul 2016	3,663	1,187	4,850
	Aug 2016	3,941	1,307	5,248
	Sep 2016	4,654	1,559	6,213
	Oct 2016	4,935	1,622	6,557
	Nov 2016	4,677	1,552	6,229
	Dec 2016	4,762	1,580	6,342
	Total	56,197	18,305	74,502
2017	Jan 2017	5,111	1,708	6,819
	Feb 2017	4,716	1,504	6,220
	Mar 2017	5,349	1,843	7,192
	Apr 2017	4,790	1,490	6,280
	May 2017	5,847	1,919	7,766
	Jun 2017	4,853	1,665	6,518
	Jul 2017	3,814	1,389	5,203
	Aug 2017	3,866	1,340	5,206
	Sep 2017	4,719	1,643	6,362
	Total	43,065	14,501	45,998
Grand Total		273,313	83,101	344,846

¹Source of Data: NJ SPIRIT

²A CPS Report or a CWS Referral may include multiple children in a family, with one or more allegation or request for services. In these cases, each CPS Report or CWS Referral is counted once - the CPS Report or the CWS Referral is the unit of analysis rather than the child.

³Prior to January 2014, the number of CPS Reports and CWS Referrals was based on the type of assignment of the CPS Report or CWS Referral. Beginning in January 2014, the number of CPS Reports and CWS Referrals is based on the number of CPS Reports and CWS Referrals received.

Table 3: Source of CPS Reports and CWS Referrals

	Source	Sep 2016	Oct 2016	Nov 2016	Dec 2016	Jan 2017	Feb 2017	Mar 2017	Apr 2017	May 2017	Jun 2017	Jul 2017	Aug 2017	Sep 2017		13 Month Total	
CPS Reports and CWS Referrals	School Staff	1,150	1,639	1,628	1,614	1,952	1,723	2,116	1,400	2,167	1,149	150	90	1211	19%	17,989	22%
	Healthcare Provider	775	837	799	846	873	837	867	824	924	932	818	873	861	14%	11,066	13%
	Law Enforcement	1,013	1,049	989	936	992	881	1,022	1,133	1,177	1,072	1148	1169	1180	19%	13,761	17%
	Government Agency	445	446	399	384	453	432	491	376	434	438	400	423	442	7%	5,563	7%
	Parent	555	517	507	569	544	476	554	517	632	586	571	535	528	8%	7,091	9%
	Relative/Friend/Neighbor	594	506	431	443	444	379	434	462	536	525	541	494	462	7%	6,251	8%
	Anonymous	710	642	605	666	654	645	715	633	837	754	580	627	711	11%	8,779	11%
	CP&P	125	123	117	99	122	105	136	110	128	144	145	142	142	2%	1,638	2%
	Court/Legal	135	124	98	142	126	152	162	132	141	183	131	161	162	3%	1,849	2%
	Community Group/Individual	272	257	260	251	280	229	278	296	336	283	288	307	279	4%	3,616	4%
	Facility Staff (incl Correctional Facility)	95	97	85	85	98	76	81	99	95	102	90	92	89	1%	1,184	1%
	Child (Self)	37	41	41	41	34	34	34	22	38	38	35	41	46	1%	482	1%
	Other	287	266	252	255	232	240	280	259	300	296	283	235	236	4%	3,421	4%
	Daycare/Babysitter	20	13	18	11	15	11	22	17	21	16	23	17	13	0%	217	0%
	Total		6,213	6,557	6,229	6,342	6,819	6,220	7,192	6,280	7,766	6,518	5,203	5,206	6,362		82,907

Table 4: Monthly Count of CPS Reports and CWS Referrals Assigned to Counties

County														Average Number of Assignments Last 13 Months	Aug 17 to Sep 17 Numerical Difference
	Sep 2016	Oct 2016	Nov 2016	Dec 2016	Jan 2017	Feb 2017	Mar 2017	Apr 2017	May 2017	Jun 2017	Jul 2017	Aug 2017	Sep 2017		
Atlantic	252	285	243	239	241	221	271	233	312	253	214	245	255	251	10
Bergen	340	370	352	384	423	375	409	370	425	351	284	291	362	364	71
Burlington	309	293	325	259	333	289	343	262	394	283	262	256	328	303	72
Camden	534	537	536	557	539	520	643	581	629	571	447	492	530	547	38
Cape May	73	78	68	63	68	81	85	79	118	76	80	64	68	77	4
Cumberland	209	201	230	229	277	213	248	243	260	236	203	207	249	231	42
Essex	626	713	659	709	722	627	781	701	878	770	561	585	642	690	57
Gloucester	244	266	224	282	272	291	303	251	274	280	221	235	232	260	-3
Hudson	403	450	389	433	449	413	453	379	519	434	295	290	418	410	128
Hunterdon	44	36	46	54	46	49	57	39	59	37	49	40	64	48	24
Mercer	272	230	280	224	288	236	277	251	327	272	210	222	308	261	86
Middlesex	426	449	379	441	468	476	514	431	530	404	350	257	420	427	163
Monmouth	347	382	332	348	391	374	399	349	435	357	276	264	349	354	85
Morris	225	245	214	227	218	219	244	239	260	239	163	168	216	221	48
Ocean	353	408	364	384	416	378	420	390	473	377	339	351	342	384	-9
Passaic	397	471	439	431	518	413	522	412	550	424	324	319	425	434	106
Salem	89	78	66	60	93	73	78	87	90	85	74	54	102	79	48
Somerset	149	158	184	164	147	146	178	153	180	151	111	117	127	151	10
Sussex	101	80	96	104	101	84	106	74	102	93	72	92	92	92	0
Union	323	316	312	306	341	303	361	317	375	335	255	246	345	318	99
Warren	97	97	84	79	108	96	95	84	85	99	109	69	117	94	48
County Subtotals	5,813	6,143	5,822	5,977	6,459	5,877	6,787	5,925	7,275	6,127	4,899	4,864	5,991	5,997	1,127
Central Region IAIU	52	63	57	59	41	58	54	50	75	67	42	55	54	56	-1
Metro Region IAIU	46	65	48	45	61	54	68	51	69	48	34	25	41	50	16
Northern Region IAIU	62	76	70	52	65	58	68	48	87	49	47	34	51	59	17
Southern Region IAIU	66	68	89	79	76	71	87	76	108	80	50	63	66	75	3
IAIU Subtotals	226	272	264	235	243	241	277	225	339	244	173	177	212	241	35
Unable to Determine¹	168	140	143	129	113	100	126	127	152	146	129	163	158	138	-5
Other Offices	6	2	0	1	4	2	2	3	0	1	2	2	1	2	-1
Grand Total	6,213	6,557	6,229	6,342	6,819	6,220	7,192	6,280	7,766	6,518	5,203	5,206	6,362	6,377	1156

¹CPS Reports or CWS Referrals not assigned to an office through the Assignment Designee, but were assigned to an office for an assessment or investigation.

Table 5: Monthly Count of CPS Reports and CWS Referrals Assigned to CP&P Local Offices

County	Local Office	Type of Referral	Sep 2016	Oct 2016	Nov 2016	Dec 2016	Jan 2017	Feb 2017	Mar 2017	Apr 2017	May 2017	Jun 2017	Jul 2017	Aug 2017	Sep 2017	Total
ATLANTIC	Atlantic East	CPS	109	127	116	118	107	102	118	101	141	107	108	102	107	1,463
		CWS	38	34	42	33	27	21	35	34	45	41	32	41	35	458
		Total	147	161	158	151	134	123	153	135	186	148	140	143	142	1,921
	Atlantic West	CPS	82	101	60	75	73	69	86	74	102	76	60	81	90	1,029
		CWS	23	23	25	13	34	29	32	24	24	29	14	21	23	314
		Total	105	124	85	88	107	98	118	98	126	105	74	102	113	1,343
	County Totals	CPS	191	228	176	193	180	171	204	175	243	183	168	183	197	2,492
		CWS	61	57	67	46	61	50	67	58	69	70	46	62	58	772
		Total	252	285	243	239	241	221	271	233	312	253	214	245	255	3,264
BERGEN	Bergen Central	CPS	90	104	104	125	127	118	121	104	129	109	72	70	106	1,379
		CWS	28	34	40	44	52	42	45	42	51	31	34	33	47	523
		Total	118	138	144	169	179	160	166	146	180	140	106	103	153	1,902
	Bergen South	CPS	157	160	161	153	174	152	165	175	166	151	117	138	149	2,018
		CWS	65	72	47	62	70	63	78	49	79	60	61	50	60	816
		Total	222	232	208	215	244	215	243	224	245	211	178	188	209	2,834
	County Totals	CPS	247	264	265	278	301	270	286	279	295	260	189	208	255	3,397
		CWS	93	106	87	106	122	105	123	91	130	91	95	83	107	1,339
		Total	340	370	352	384	423	375	409	370	425	351	284	291	362	4,736
BURLINGTON	Burlington East	CPS	92	105	126	104	118	98	118	82	155	107	116	97	125	1,443
		CWS	49	41	33	30	45	40	55	34	61	35	32	30	39	524
		Total	141	146	159	134	163	138	173	116	216	142	148	127	164	1,967
	Burlington West	CPS	121	106	118	92	125	111	125	109	130	108	81	96	116	1,438
		CWS	47	41	48	33	45	40	45	37	48	33	33	33	48	531
		Total	168	147	166	125	170	151	170	146	178	141	114	129	164	1,969
	County Totals	CPS	213	211	244	196	243	209	243	191	285	215	197	193	241	2,881
		CWS	96	82	81	63	90	80	100	71	109	68	65	63	87	1,055
		Total	309	293	325	259	333	289	343	262	394	283	262	256	328	3,936
CAMDEN	Camden Central	CPS	115	146	121	114	106	113	158	119	125	136	99	117	106	1,575
		CWS	40	26	39	37	38	34	40	28	31	38	29	36	27	443
		Total	155	172	160	151	144	147	198	147	156	174	128	153	133	2,018
	Camden East	CPS	104	107	98	114	126	88	104	125	111	103	75	94	104	1,353
		CWS	34	32	34	43	43	30	33	32	46	32	34	28	30	451
		Total	138	139	132	157	169	118	137	157	157	135	109	122	134	1,804
	Camden North	CPS	97	101	95	102	102	107	131	120	155	114	88	87	112	1,411
		CWS	42	28	34	36	32	32	46	30	28	43	37	29	41	458
		Total	139	129	129	138	134	139	177	150	183	157	125	116	153	1,869
	Camden South	CPS	86	67	89	78	73	89	96	99	103	88	71	78	88	1,105
		CWS	16	30	26	33	19	27	35	28	30	17	14	23	22	320
		Total	102	97	115	111	92	116	131	127	133	105	85	101	110	1,425
	County Totals	CPS	402	421	403	408	407	397	489	463	494	441	333	376	410	5,444
		CWS	132	116	133	149	132	123	154	118	135	130	114	116	120	1,672
		Total	534	537	536	557	539	520	643	581	629	571	447	492	530	7,116
CAPE MAY	Cape May	CPS	62	62	48	53	52	65	68	50	100	67	64	45	58	794
		CWS	11	16	20	10	16	16	17	29	18	9	16	19	10	207
		Total	73	78	68	63	68	81	85	79	118	76	80	64	68	1,001
	County Totals	CPS	62	62	48	53	52	65	68	50	100	67	64	45	58	794
		CWS	11	16	20	10	16	16	17	29	18	9	16	19	10	207
Total	73	78	68	63	68	81	85	79	118	76	80	64	68	1,001		
CUMBERLAND	Cumberland East	CPS	48	40	58	70	70	59	60	65	70	48	50	54	72	764
		CWS	17	16	18	10	26	26	20	22	21	20	33	23	19	271
		Total	65	56	76	80	96	85	80	87	91	68	83	77	91	1,035
	Cumberland West	CPS	113	109	126	111	143	93	118	123	135	123	84	103	118	1,499
		CWS	31	36	28	38	38	35	50	33	34	45	36	27	40	471
		Total	144	145	154	149	181	128	168	156	169	168	120	130	158	1,970
	County Totals	CPS	161	149	184	181	213	152	178	188	205	171	134	157	190	2,263
		CWS	48	52	46	48	64	61	70	55	55	65	69	50	59	742
		Total	209	201	230	229	277	213	248	243	260	236	203	207	249	3,005

Table 5: Monthly Count of CPS Reports and CWS Referrals Assigned to CP&P Local Offices

County	Local Office	Type of Referral	Sep 2016	Oct 2016	Nov 2016	Dec 2016	Jan 2017	Feb 2017	Mar 2017	Apr 2017	May 2017	Jun 2017	Jul 2017	Aug 2017	Sep 2017	Total
ESSEX	Essex Central	CPS	91	105	94	108	111	81	77	78	118	92	82	78	79	1,194
		CWS	24	39	43	40	31	33	41	32	49	42	33	23	33	463
		Total	115	144	137	148	142	114	118	110	167	134	115	101	112	112
	Essex North	CPS	59	61	77	83	68	49	79	62	87	84	50	58	70	887
		CWS	27	26	27	25	27	24	26	35	31	32	25	18	23	346
		Total	86	87	104	108	95	73	105	97	118	116	75	76	93	1,233
	Essex South	CPS	55	67	58	55	71	69	69	65	76	62	45	53	58	803
		CWS	25	26	25	20	24	16	31	22	32	21	12	23	19	296
		Total	80	93	83	75	95	85	100	87	108	83	57	76	77	1099
	Newark Center City	CPS	86	91	79	95	95	81	103	102	121	114	71	75	89	1202
		CWS	28	33	36	40	22	25	40	31	38	47	31	37	30	438
		Total	114	124	115	135	117	106	143	133	159	161	102	112	119	1640
	Newark Northeast	CPS	90	86	64	74	95	89	104	104	108	103	83	90	94	1184
		CWS	28	44	23	34	38	25	46	39	39	32	25	18	29	420
		Total	118	130	87	108	133	114	150	143	147	135	108	108	123	1604
Newark South	CPS	79	95	94	109	102	101	120	95	128	99	78	75	80	1255	
	CWS	34	40	39	26	38	34	45	36	51	42	26	37	38	486	
	Total	113	135	133	135	140	135	165	131	179	141	104	112	118	1741	
County Totals	CPS	460	505	466	524	542	470	552	506	638	554	409	429	470	6525	
	CWS	166	208	193	185	180	157	229	195	240	216	152	156	172	2449	
	Total	626	713	659	709	722	627	781	701	878	770	561	585	642	8974	
GLOUCESTER	Gloucester East	CPS	84	93	94	101	96	112	109	85	104	106	74	91	79	1228
		CWS	23	30	24	26	28	28	29	27	35	31	27	25	33	366
		Total	107	123	118	127	124	140	138	112	139	137	101	116	112	1594
	Gloucester West	CPS	110	123	84	131	106	119	125	103	118	104	91	85	86	1385
		CWS	27	20	22	24	42	32	40	36	17	39	29	34	34	396
		Total	137	143	106	155	148	151	165	139	135	143	120	119	120	1781
	County Totals	CPS	194	216	178	232	202	231	234	188	222	210	165	176	165	2613
CWS		50	50	46	50	70	60	69	63	52	70	56	59	67	762	
Total		244	266	224	282	272	291	303	251	274	280	221	235	232	3375	
HUDSON	Hudson Central	CPS	72	82	65	80	80	69	80	89	78	84	59	52	69	959
		CWS	32	33	22	36	39	34	27	26	34	32	23	26	35	399
		Total	104	115	87	116	119	103	107	115	112	116	82	78	104	1358
	Hudson North	CPS	81	99	79	72	85	78	87	69	103	67	67	42	72	1001
		CWS	30	29	29	30	30	36	42	21	38	39	19	14	31	388
		Total	111	128	108	102	115	114	129	90	141	106	86	56	103	1389
	Hudson South	CPS	71	68	81	71	86	91	75	53	101	70	53	45	80	945
		CWS	24	34	41	36	36	30	36	16	45	33	16	21	27	395
		Total	95	102	122	107	122	121	111	69	146	103	69	66	107	1340
	Hudson West	CPS	67	78	52	84	63	53	71	74	89	77	33	66	74	881
		CWS	26	27	20	24	30	22	35	31	31	32	25	24	30	357
		Total	93	105	72	108	93	75	106	105	120	109	58	90	104	1238
	County Totals	CPS	291	327	277	307	314	291	313	285	371	298	212	205	295	3786
CWS		112	123	112	126	135	122	140	94	148	136	83	85	123	1539	
Total		403	450	389	433	449	413	453	379	519	434	295	290	418	5325	
HUNTERDON	Hunterdon	CPS	33	25	28	41	32	36	47	27	38	31	30	32	46	446
		CWS	11	11	18	13	14	13	10	12	21	6	19	8	18	174
		Total	44	36	46	54	46	49	57	39	59	37	49	40	64	620
	County Totals	CPS	33	25	28	41	32	36	47	27	38	31	30	32	46	446
		CWS	11	11	18	13	14	13	10	12	21	6	19	8	18	174
Total		44	36	46	54	46	49	57	39	59	37	49	40	64	620	
MERCER	Mercer North	CPS	105	91	122	77	107	91	95	89	120	98	62	94	103	1254
		CWS	48	24	27	25	37	31	45	23	47	29	35	20	49	440
		Total	153	115	149	102	144	122	140	112	167	127	97	114	152	1694
	Mercer South	CPS	74	83	98	87	109	89	105	104	118	113	78	83	109	1250
		CWS	45	32	33	35	35	25	32	35	42	32	35	25	46	452
		Total	119	115	131	122	144	114	137	139	160	145	113	108	155	1702
	County Totals	CPS	179	174	220	164	216	180	200	193	238	211	140	177	212	2504
		CWS	93	56	60	60	72	56	77	58	89	61	70	45	95	892
		Total	272	230	280	224	288	236	277	251	327	272	210	222	307	3396

Data in this report is preliminary and may differ from any final report. This report is produced to ensure continuous quality improvement throughout DCF.

Table 5: Monthly Count of CPS Reports and CWS Referrals Assigned to CP&P Local Offices

County	Local Office	Type of Referral	Sep 2016	Oct 2016	Nov 2016	Dec 2016	Jan 2017	Feb 2017	Mar 2017	Apr 2017	May 2017	Jun 2017	Jul 2017	Aug 2017	Sep 2017	Total
MIDDLESEX	Middlesex Central	CPS	103	93	73	70	91	78	105	103	95	78	75	44	99	1107
		CWS	15	24	14	25	27	24	21	22	39	25	29	17	36	318
		Total	118	117	87	95	118	102	126	125	134	103	104	61	135	1425
	Middlesex Coastal	CPS	111	128	106	131	121	150	151	121	135	112	98	75	112	1551
		CWS	35	40	33	39	46	42	40	32	47	43	23	28	41	489
		Total	146	168	139	170	167	192	191	153	182	155	121	103	153	2040
	Middlesex West	CPS	123	130	114	134	154	149	148	119	160	111	90	62	112	1606
		CWS	39	34	39	42	29	33	49	34	54	35	35	31	20	474
		Total	162	164	153	176	183	182	197	153	214	146	125	93	132	2080
	County Totals	CPS	337	351	293	335	366	377	404	343	390	301	263	181	323	4264
CWS		89	98	86	106	102	99	110	88	140	103	87	76	97	1281	
Total		426	449	379	441	468	476	514	431	530	404	350	257	420	5545	
MONMOUTH	Monmouth North	CPS	137	156	142	134	160	159	154	149	174	145	126	103	139	1878
		CWS	43	56	42	29	49	41	47	34	64	52	30	32	38	557
		Total	180	212	184	163	209	200	201	183	238	197	156	135	177	2435
	Monmouth South	CPS	134	127	112	147	130	120	149	113	144	119	85	97	120	1597
		CWS	33	43	36	38	52	54	49	53	53	41	35	32	52	571
		Total	167	170	148	185	182	174	198	166	197	160	120	129	172	2168
	County Totals	CPS	271	283	254	281	290	279	303	262	318	264	211	200	259	3475
		CWS	76	99	78	67	101	95	96	87	117	93	65	64	90	1128
Total		347	382	332	348	391	374	399	349	435	357	276	264	349	4603	
MORRIS	Morris East	CPS	73	88	79	72	72	68	78	83	88	82	53	52	60	948
		CWS	22	29	31	24	27	23	38	31	28	29	21	26	35	364
		Total	95	117	110	96	99	91	116	114	116	111	74	78	95	1312
	Morris West	CPS	90	92	74	87	78	97	89	90	104	93	70	64	85	1113
		CWS	40	36	30	44	41	31	39	35	40	35	19	26	36	452
		Total	130	128	104	131	119	128	128	125	144	128	89	90	121	1565
	County Totals	CPS	163	180	153	159	150	165	167	173	192	175	123	116	145	2061
CWS		62	65	61	68	68	54	77	66	68	64	40	52	71	816	
Total		225	245	214	227	218	219	244	239	260	239	163	168	216	2877	
OCEAN	Ocean North	CPS	130	165	151	154	163	136	180	165	193	148	122	121	134	1962
		CWS	43	49	41	51	47	40	48	43	60	41	38	46	37	584
		Total	173	214	192	205	210	176	228	208	253	189	160	167	171	2546
	Ocean South	CPS	138	138	133	131	159	163	156	148	182	133	134	130	129	1874
		CWS	42	56	39	48	47	39	36	34	38	55	45	54	42	575
		Total	180	194	172	179	206	202	192	182	220	188	179	184	171	2449
County Totals	CPS	268	303	284	285	322	299	336	313	375	281	256	251	263	3836	
	CWS	85	105	80	99	94	79	84	77	98	96	83	100	79	1159	
	Total	353	408	364	384	416	378	420	390	473	377	339	351	342	4995	
PASSAIC	Passaic Central	CPS	152	171	176	152	184	175	182	168	197	150	117	128	172	2124
		CWS	53	71	82	68	85	73	84	63	82	52	40	40	60	853
		Total	205	242	258	220	269	248	266	231	279	202	157	168	232	2977
	Passaic North	CPS	129	150	129	146	178	120	182	130	194	157	119	104	130	1868
		CWS	63	79	52	65	71	45	74	51	77	65	48	47	63	800
		Total	192	229	181	211	249	165	256	181	271	222	167	151	193	2668
	County Totals	CPS	281	321	305	298	362	295	364	298	391	307	236	232	302	3992
CWS		116	150	134	133	156	118	158	114	159	117	88	87	123	1653	
Total		397	471	439	431	518	413	522	412	550	424	324	319	425	5645	
SALEM	Salem	CPS	63	59	51	45	80	57	61	72	65	68	52	45	82	800
		CWS	26	19	15	15	13	16	17	15	25	17	22	9	20	229
		Total	89	78	66	60	93	73	78	87	90	85	74	54	102	1029
	County Totals	CPS	63	59	51	45	80	57	61	72	65	68	52	45	82	800
		Total	89	78	66	60	93	73	78	87	90	85	74	54	102	1029
SOMERSET	Somerset	CPS	115	119	136	122	111	109	126	122	135	121	74	83	97	1470
		CWS	34	39	48	42	36	37	52	31	45	30	37	34	30	495
		Total	149	158	184	164	147	146	178	153	180	151	111	117	127	1965
	County Totals	CPS	115	119	136	122	111	109	126	122	135	121	74	83	97	1470
		Total	149	158	184	164	147	146	178	153	180	151	111	117	127	1965

Table 5: Monthly Count of CPS Reports and CWS Referrals Assigned to CP&P Local Offices

County	Local Office	Type of Referral	Sep 2016	Oct 2016	Nov 2016	Dec 2016	Jan 2017	Feb 2017	Mar 2017	Apr 2017	May 2017	Jun 2017	Jul 2017	Aug 2017	Sep 2017	Total
SUSSEX	Sussex	CPS	79	55	70	71	71	68	85	52	70	67	52	67	69	876
		CWS	22	25	26	33	30	16	21	22	32	26	20	25	23	321
		Total	101	80	96	104	101	84	106	74	102	93	72	92	92	1197
	County Totals	CPS	79	55	70	71	71	68	85	52	70	67	52	67	69	876
		CWS	22	25	26	33	30	16	21	22	32	26	20	25	23	321
	Total	101	80	96	104	101	84	106	74	102	93	72	92	92	1197	
UNION	Union Central	CPS	78	84	82	83	86	75	94	80	87	84	73	72	68	1046
		CWS	26	22	28	25	38	20	31	21	21	35	30	21	40	358
		Total	104	106	110	108	124	95	125	101	108	119	103	93	108	1404
	Union East	CPS	74	77	78	73	98	82	94	82	97	97	55	69	91	1067
		CWS	28	35	33	31	29	25	22	30	35	27	15	15	31	356
		Total	102	112	111	104	127	107	116	112	132	124	70	84	122	1423
	Union West	CPS	90	78	65	62	68	67	87	86	94	57	53	51	86	944
		CWS	27	20	26	32	22	34	33	18	41	35	29	18	29	364
		Total	117	98	91	94	90	101	120	104	135	92	82	69	115	1308
	County Totals	CPS	242	239	225	218	252	224	275	248	278	238	181	192	245	3057
		CWS	81	77	87	88	89	79	86	69	97	97	74	54	100	1078
		Total	323	316	312	306	341	303	361	317	375	335	255	246	345	4135
WARREN	Warren	CPS	76	79	68	57	88	68	68	61	64	68	80	50	83	910
		CWS	21	18	16	22	20	28	27	23	21	31	29	19	34	309
		Total	97	97	84	79	108	96	95	84	85	99	109	69	117	1219
	County Totals	CPS	76	79	68	57	88	68	68	61	64	68	80	50	83	910
		CWS	21	18	16	22	20	28	27	23	21	31	29	19	34	309
	Total	97	97	84	79	108	96	95	84	85	99	109	69	117	1219	
County CPS Referral Total		CPS	4,328	4,571	4,328	4,448	4,794	4,413	5,003	4,489	5,407	4,531	3,569	3,598	4,407	57,886
County CWS Referral Total		CWS	1,485	1,572	1,494	1,529	1,665	1,464	1,784	1,436	1,868	1,596	1,330	1,266	1,583	20,072
County Referral Total		Total	5,813	6,143	5,822	5,977	6,459	5,877	6,787	5,925	7,275	6,127	4,899	4,864	5,990	77,958
Central Region IAIU	CPS	52	63	57	59	41	58	54	50	75	67	42	55	54	727	
	CWS	0	0	0	0	0	0	0	0	0	0	0	0	0	0	
	Total	52	63	57	59	41	58	54	50	75	67	42	55	54	727	
Metro Region IAIU	CPS	46	65	48	45	61	54	68	51	69	48	34	25	41	655	
	CWS	0	0	0	0	0	0	0	0	0	0	0	0	0	0	
	Total	46	65	48	45	61	54	68	51	69	48	34	25	41	655	
Northern Region IAIU	CPS	62	76	70	52	65	58	68	48	87	49	47	34	51	767	
	CWS	0	0	0	0	0	0	0	0	0	0	0	0	0	0	
	Total	62	76	70	52	65	58	68	48	87	49	47	34	51	767	
Southern Region IAIU	CPS	66	68	88	79	76	71	87	76	108	80	50	63	66	978	
	CWS	0	0	1	0	0	0	0	0	0	0	0	0	0	1	
	Total	66	68	89	79	76	71	87	76	108	80	50	63	66	979	
IAIU CPS Subtotal		CPS	226	272	263	235	243	241	277	225	339	244	173	177	212	3,127
IAIU CWS Subtotal		CWS	0	0	1	0	0	0	0	0	0	0	0	0	1	1
IAIU Subtotal		Total	226	272	264	235	243	241	277	225	339	244	173	177	212	3,128
County and IAIU CPS Subtotal		CPS	4,554	4,843	4,591	4,683	5,037	4,654	5,280	4,714	5,746	4,775	3,742	3,775	4,619	61,013
County and IAIU CWS Subtotal		CWS	1,485	1,572	1,495	1,529	1,665	1,464	1,784	1,436	1,868	1,596	1,330	1,266	1,583	20,073
Unable to Determine ⁽¹⁾		Total	168	140	143	129	113	100	126	127	152	146	129	163	158	1,794
Other Offices		Total	6	2	0	1	4	2	2	3	0	1	2	2	2	27
Grand Total		Total	6,213	6,557	6,229	6,342	6,819	6,220	7,192	6,280	7,766	6,518	5,203	5,206	6,362	82,907

⁽¹⁾CPS Reports or CWS Referrals not assigned to an office through the Assignment Designee, but were assigned to an office for an assessment or investigation.