



## **Child Protection and Permanency**

# **Monthly Screening and Investigation Report September 2019**

Christine Norbut Beyer, MSW  
Commissioner



## Table of Contents

Table 1: NJ State Central Registry Activity: Monthly Child Abuse and Neglect Hotline Calls, Intakes and Assignments to Child Protection & Permanency (CP&P) Offices

---

Chart 1: CP&P Annual Trends in Child Protection Services (CPS) Reports and Child Welfare Services (CWS) Referrals

---

Table 2: Assignments to CP&P Offices: CPS Reports and CWS Referrals

---

Table 3: Source of CPS Reports and CWS Referrals

---

Table 4: Monthly Count of CPS Reports and CWS Referrals Assigned to Counties

---

Table 5: Monthly Count of CPS Reports and CWS Referrals Assigned to CP&P Local Offices

---

**Table 1: NJ State Central Registry Activity: Monthly Child Abuse and Neglect Hotline Calls, Intakes and Assignments to CP&P Offices<sup>1,2,7</sup>**

2018 - 2019	Hotline Call Activity				Intakes Recorded in NJ SPIRIT <sup>6,8</sup>												Assignments to CP&P Offices				
	Total Calls to SCR <sup>3</sup>	Abandon Calls <sup>4</sup>	Average Time to Answer (seconds)	Resulting NJS Intakes <sup>5</sup>	CPS Reports		CWS Referrals		No Action Required (NAR)		Related Information (RI)		Information & Referral (I&R)		Information Only (IO)		CPS Reports		CWS Referrals		Total
					n	%	n	%	n	%	n	%	n	%	n	%	n	%	n	%	
September 2018	13,554	925	64	14,277	4,748	33.3%	1,632	11.4%	217	1.5%	3,914	27.4%	1,448	10.1%	2,318	16.2%	4,748	74.4%	1,634	25.6%	6,382
October 2018	15,489	904	68	16,470	5,790	35.2%	2,008	12.2%	260	1.6%	4,103	24.9%	1,827	11.1%	2,482	15.1%	5,790	74.2%	2,011	25.8%	7,801
November 2018	13,533	1,111	80	14,067	4,973	35.4%	1,621	11.5%	210	1.5%	3,749	26.7%	1,453	10.3%	2,061	14.7%	4,973	75.4%	1,620	24.6%	6,593
December 2018	13,020	971	78	13,683	4,891	35.7%	1,524	11.1%	174	1.3%	3,518	25.7%	1,446	10.6%	2,130	15.6%	4,891	76.2%	1,527	23.8%	6,418
January 2019	14,566	1,097	91	15,153	5,443	35.9%	1,858	12.3%	224	1.5%	3,764	24.8%	1,673	11.0%	2,191	14.5%	5,443	74.6%	1,858	25.4%	7,301
February 2019	12,995	1,095	102	13,518	4,811	35.6%	1,626	12.0%	213	1.6%	3,476	25.7%	1,506	11.1%	1,886	14.0%	4,811	74.7%	1,628	25.3%	6,439
March 2019	14,637	1,422	112	15,528	5,677	36.6%	1,826	11.8%	212	1.4%	3,825	24.6%	1,762	11.3%	2,226	14.3%	5,677	75.7%	1,824	24.3%	7,501
April 2019	14,252	1,404	113	14,540	5,313	36.5%	1,630	11.2%	253	1.7%	3,500	24.1%	1,721	11.8%	2,123	14.6%	5,313	76.5%	1,630	23.5%	6,943
May 2019	15,705	1,615	120	15,810	5,853	37.0%	1,780	11.3%	229	1.4%	3,784	23.9%	1,852	11.7%	2,312	14.6%	5,853	76.7%	1,781	23.3%	7,634
June 2019	13,596	1,287	107	14,057	4,872	33.0%	1,507	10.7%	268	1.9%	3,537	25.2%	1,703	12.1%	2,168	15.4%	4,874	76.4%	1,509	23.6%	6,383
July 2019	12,135	874	73	12,821	4,277	33.4%	1,309	10.2%	267	2.1%	3,250	25.3%	1,452	11.3%	2,266	17.7%	4,277	76.6%	1,309	23.4%	5,586
August 2019	11,044	482	38	12,291	4,068	33.1%	1,303	10.6%	222	1.8%	3,113	25.3%	1,381	11.2%	2,204	17.9%	4,068	75.7%	1,306	24.3%	5,374
<b>September 2019</b>	<b>13,737</b>	<b>991</b>	<b>72</b>	<b>14,995</b>	<b>5,315</b>	<b>35.4%</b>	<b>1,551</b>	<b>10.3%</b>	<b>266</b>	<b>1.8%</b>	<b>3,695</b>	<b>24.6%</b>	<b>1,790</b>	<b>11.9%</b>	<b>2,378</b>	<b>15.9%</b>	<b>5,315</b>	<b>77.4%</b>	<b>1,551</b>	<b>22.6%</b>	<b>6,866</b>
	<b>13,713</b>	<b>1,091</b>	<b>86</b>	<b>14,401</b>	<b>5,079</b>	<b>35.3%</b>	<b>1,629</b>	<b>11.3%</b>	<b>232</b>	<b>1.6%</b>	<b>3,633</b>	<b>25.2%</b>	<b>1,616</b>	<b>11.2%</b>	<b>2,211</b>	<b>15.4%</b>	<b>5,079</b>	<b>75.7%</b>	<b>1,630</b>	<b>24.3%</b>	<b>6,709</b>
<b>Overall Total</b>	<b>178,263</b>	<b>14,178</b>		<b>187,210</b>	<b>66,031</b>		<b>21,175</b>		<b>3,015</b>		<b>47,228</b>		<b>21,014</b>		<b>28,745</b>		<b>66,033</b>	<b>75.7%</b>	<b>21,188</b>	<b>24.3%</b>	<b>87,221</b>

<sup>1</sup>Comes from three distinct sources: (1) the Automatic Call Distribution (ACD) phone system; which keeps a count of the number of calls and call routing; (2) Monthly NJSpirit Intakes; which record decision making on calls received by hotline screeners, and (3) NJSpirit extracts of assigned CWS Referrals and CPS Reports.

<sup>2</sup>The number of Intakes, CPS Reports, and CWS Referrals are based on an extract from NJSpirit. Data extracted by the Office of Research, Evaluation, and Reporting on **October 9, 2019** includes all Intakes, CPS Reports, and CWS Referrals received from **September 1, 2019 through September 30, 2019**.

<sup>3</sup>The number calls received through the ACD System that were directed to a screener from any call-in phone number.

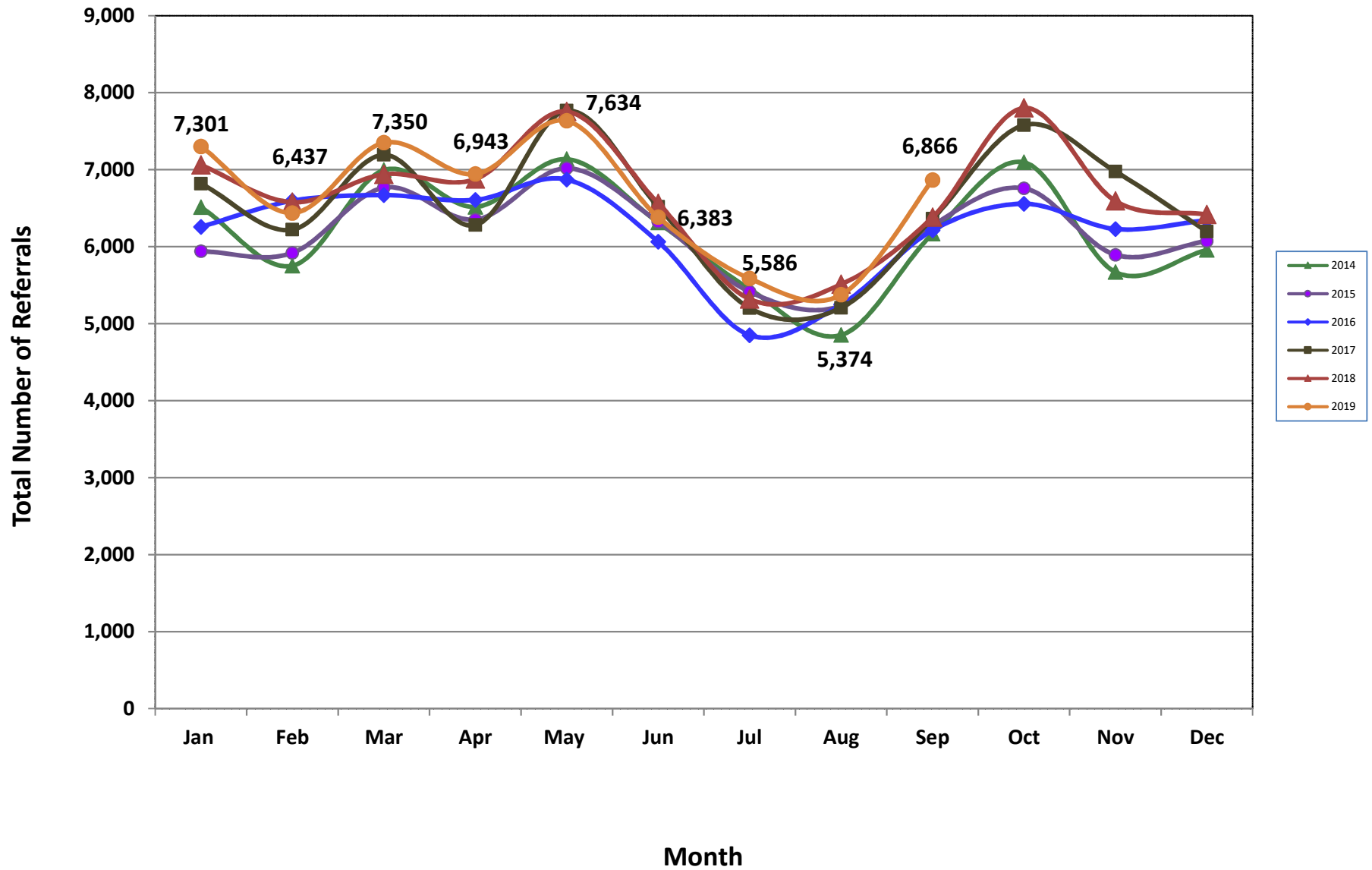
<sup>4</sup>The number of calls received through the ACD System that are abandoned either while waiting in queue or while ringing.

<sup>5</sup>The number of Intakes entered in NJSpirit from the number of calls received.

<sup>6</sup>The number of Intakes recorded in NJSpirit, by type of Intake. There is not a one-to-one relationship between an ACD call and an Intake; multiple calls to State Central Registry (SCR) may result in a single Intake, or one call may result in multiple Intakes.

<sup>7</sup>Intake: The process of documenting: a report of alleged abuse or neglect of a child (CPS); a request for services on behalf of a child, or a referral of a child for services (CWS); a call in which the caller provides additional or clarifying information about a current service case or active investigation (RI); informing a caller of, or referring a caller to, services available from other private or public sources (I&R); a call that requires no action by CP&P (NAR); or a response to a simple inquiry (IO).

### CP&P Annual Trends in CPS Reports and CWS Referrals



**Table 2: Assignments to CP&P Offices: CPS Reports and CWS Referrals<sup>1</sup>**

Intake Date <sup>3</sup>		CPS Reports <sup>2</sup>	CWS Referrals <sup>2</sup>	Total Assignments <sup>2</sup>
2014	Jan 2014	5,097	1,416	6,513
	Feb 2014	4,457	1,295	5,752
	Mar 2014	5,408	1,586	6,994
	Apr 2014	5,049	1,467	6,516
	May 2014	5,501	1,635	7,136
	Jun 2014	4,796	1,517	6,313
	Jul 2014	4,202	1,247	5,449
	Aug 2014	3,629	1,222	4,851
	<b>Sep 2014</b>	<b>4,668</b>	<b>1,498</b>	<b>6,166</b>
	Oct 2014	5,509	1,586	7,095
	Nov 2014	4,254	1,416	5,670
	Dec 2014	4,509	1,447	5,956
	<b>Total</b>	<b>57,079</b>	<b>17,332</b>	<b>74,411</b>
2015	Jan 2015	4,549	1,391	5,940
	Feb 2015	4,574	1,345	5,919
	Mar 2015	5,187	1,580	6,767
	Apr 2015	4,967	1,384	6,351
	May 2015	5,457	1,561	7,018
	Jun 2015	4,887	1,436	6,323
	Jul 2015	4,140	1,273	5,413
	Aug 2015	3,978	1,256	5,234
	<b>Sep 2015</b>	<b>4,776</b>	<b>1,495</b>	<b>6,271</b>
	Oct 2015	5,139	1,619	6,758
	Nov 2015	4,417	1,477	5,894
	Dec 2015	4,530	1,544	6,074
	<b>Total</b>	<b>56,601</b>	<b>17,361</b>	<b>73,962</b>
2016	Jan 2016	4,686	1,571	6,257
	Feb 2016	4,974	1,622	6,596
	Mar 2016	5,000	1,669	6,669
	Apr 2016	5,065	1,542	6,607
	May 2016	5,238	1,633	6,871
	Jun 2016	4,602	1,461	6,063
	Jul 2016	3,663	1,187	4,850
	Aug 2016	3,941	1,307	5,248
	<b>Sep 2016</b>	<b>4,654</b>	<b>1,559</b>	<b>6,213</b>
	Oct 2016	4,935	1,622	6,557
	Nov 2016	4,677	1,552	6,229
	Dec 2016	4,762	1,580	6,342
	<b>Total</b>	<b>56,197</b>	<b>18,305</b>	<b>74,502</b>

**Table 2: Assignments to CP&P Offices: CPS Reports and CWS Referrals<sup>1</sup>**

Intake Date <sup>3</sup>		CPS Reports <sup>2</sup>	CWS Referrals <sup>2</sup>	Total Assignments <sup>2</sup>
2017	Jan 2017	5,111	1,708	6,819
	Feb 2017	4,716	1,504	6,220
	Mar 2017	5,349	1,843	7,192
	Apr 2017	4,790	1,490	6,280
	May 2017	5,847	1,919	7,766
	Jun 2017	4,853	1,665	6,518
	Jul 2017	3,814	1,389	5,203
	Aug 2017	3,866	1,340	5,206
	<b>Sep 2017</b>	<b>4,719</b>	<b>1,643</b>	<b>6,362</b>
	Oct 2017	5,613	1,966	7,579
	Nov 2017	5,223	1,753	6,976
	Dec 2017	4,601	1,594	6,195
	<b>Total</b>	<b>58,502</b>	<b>19,814</b>	<b>78,316</b>
2018	Jan 2018	5,276	1,784	7,060
	Feb 2018	4,933	1,644	6,577
	Mar 2018	5,212	1,727	6,939
	Apr 2018	5,275	1,601	6,876
	May 2018	5,920	1,836	7,756
	Jun 2018	4,948	1,615	6,563
	Jul 2018	4,011	1,308	5,319
	Aug 2018	4,102	1,408	5,510
	<b>Sep 2018</b>	<b>4,748</b>	<b>1,634</b>	<b>6,382</b>
	Oct 2018	5,790	2,011	7,801
	Nov 2018	4,973	1,620	6,593
	Dec 2018	4,891	1,527	6,418
	<b>Total</b>	<b>60,079</b>	<b>19,715</b>	<b>79,794</b>
2019	Jan 2019	5,443	1,858	7,301
	Feb 2019	4,811	1,628	6,439
	Mar 2019	5,677	1,824	7,501
	Apr 2019	5,313	1,630	6,943
	May 2019	5,853	1,781	7,634
	June 2019	4,874	1,509	6,383
	July 2019	4,277	1,309	5,586
	Aug 2019	4,068	1,306	5,374
	<b>Sep 2019</b>	<b>5,315</b>	<b>1,551</b>	<b>6,866</b>
	<b>Total</b>	<b>27,097</b>	<b>8,721</b>	<b>35,818</b>
<b>Grand Total</b>		<b>315,555</b>	<b>101,248</b>	<b>416,803</b>

<sup>1</sup>Source of Data: NJ SPIRIT

<sup>2</sup>A CPS Report or a CWS Referral may include multiple children in a family, with one or more allegation or request for services. In these cases, each CPS Report or CWS Referral is counted once - the CPS Report or the CWS Referral is the unit of analysis rather than the child.

<sup>3</sup>Prior to January 2014, the number of CPS Reports and CWS Referrals was based on the type of assignment of the CPS Report or CWS Referral. Beginning in January 2014, the number of CPS Reports and CWS Referrals is based on the number of CPS Reports and CWS Referrals received.

**Table 3: Source of CPS Reports and CWS Referrals**

CPS Reports and CWS Referrals	Source	Sep 2018	Oct 2018	Nov 2018	Dec 2018	Jan 2019	Feb 2019	Mar 2019	Apr 2019	May 2019	June 2019	July 2019	Aug 2019	Sep 2019	13 Month Total		
	School Staff	1,237	2,256	1,769	1,643	2,151	1,887	2,388	1,732	2,167	1,163	211	90	1,479	22%	20,173	23%
	Healthcare Provider	928	1,018	954	891	999	858	977	955	1,033	970	964	917	963	14%	12,427	14%
	Law Enforcement	1,251	1,188	1,186	1,186	1,131	1,156	1,290	1,329	1,409	1,437	1,416	1,320	1,432	21%	16,731	19%
	Government Agency	428	521	430	387	417	345	374	392	477	387	448	391	417	6%	5,414	6%
	Parent	569	563	491	481	512	419	513	509	525	492	549	583	534	8%	6,740	8%
	Relative/Friend/Neighbor	475	452	370	393	447	359	399	456	400	418	482	479	505	7%	5,635	6%
	Anonymous	565	769	576	609	656	586	686	641	715	629	493	544	615	9%	8,084	9%
	CP&P	106	131	99	109	125	118	130	107	102	104	126	129	102	1%	1,488	2%
	Court/Legal	141	171	101	132	190	155	162	182	176	158	189	223	180	3%	2,160	2%
	Community Group/Individual	301	301	264	234	274	234	253	257	257	242	279	268	257	4%	3,421	4%
	Facility Staff (incl Correctional Facility)	103	97	86	79	88	57	85	88	81	76	88	92	74	1%	1,094	1%
	Child (Self)	35	51	30	35	23	29	25	32	37	37	50	47	45	1%	476	1%
	Other	228	262	218	226	270	219	204	245	244	248	277	272	249	4%	3,162	4%
	Daycare/Babysitter	15	21	19	13	18	17	15	18	11	22	14	19	14	0%	216	0%
<b>Total</b>	<b>6,382</b>	<b>7,801</b>	<b>6,593</b>	<b>6,418</b>	<b>7,301</b>	<b>6,439</b>	<b>7,501</b>	<b>7,501</b>	<b>7,634</b>	<b>6,383</b>	<b>6,383</b>	<b>6,383</b>	<b>6,866</b>		<b>87,221</b>		

**Table 4: Monthly Count of CPS Reports and CWS Referrals Assigned to Counties**

County	2018	2018	2018	2018	2019	2019	2019	2019	2019	2019	2019	2019	2019	Average Number of Assignments Last 13 Months	Aug 19 to Sep 19 Numerical Difference
	Sep	Oct	Nov	Dec	Jan	Feb	Mar	Apr	May	June	July	Aug	Sep		
Atlantic	295	280	264	243	285	274	296	273	318	279	235	235	282	274	116%
Bergen	333	467	412	377	460	369	460	439	486	376	273	285	402	395	117
Burlington	270	348	313	318	338	361	337	330	351	288	262	264	352	318	88
Camden	543	606	515	469	577	485	619	559	588	484	442	422	572	529	150
Cape May	109	87	73	68	103	83	74	88	70	82	96	80	112	87	32
Cumberland	225	232	204	200	218	191	235	202	219	214	187	158	206	207	48
Essex	666	859	712	694	798	723	795	740	851	693	604	622	713	728	91
Gloucester	215	260	235	233	302	250	272	296	341	265	250	232	259	262	27
Hudson	426	540	420	425	475	410	518	457	510	422	346	307	400	435	93
Hunterdon	57	75	58	59	48	52	71	50	67	64	42	48	74	59	26
Mercer	231	365	298	283	298	301	331	295	292	298	264	265	276	292	11
Middlesex	433	563	426	472	527	476	505	449	505	412	337	357	489	458	132
Monmouth	410	426	380	352	433	333	424	359	424	376	295	287	378	375	91
Morris	215	292	224	242	264	215	244	241	303	200	181	187	266	236	79
Ocean	386	482	450	408	428	382	440	460	459	386	385	337	428	418	91
Passaic	421	567	461	438	482	394	527	485	535	431	356	327	443	451	116
Salem	104	90	72	70	97	71	75	91	77	57	83	85	92	82	7
Somerset	155	200	181	165	160	158	196	158	167	155	155	114	180	165	66
Sussex	99	120	81	97	100	122	116	94	114	104	83	107	125	105	18
Union	328	396	351	343	401	359	405	353	398	317	276	252	321	346	69
Warren	118	105	93	104	89	73	118	131	104	102	82	88	97	100	9
<b>County Subtotals</b>	<b>6,039</b>	<b>7,360</b>	<b>6,223</b>	<b>6,060</b>	<b>6,883</b>	<b>6,082</b>	<b>7,058</b>	<b>6,550</b>	<b>7,179</b>	<b>6,005</b>	<b>5,234</b>	<b>5,059</b>	<b>6,467</b>	<b>6,323</b>	<b>1,408</b>
Central Region IAIU	39	67	63	47	61	47	61	66	82	57	58	41	60	58	19
Metro Region IAIU	50	65	61	51	55	47	62	45	64	41	36	42	43	51	1
Northern Region IAIU	63	71	70	64	58	74	83	57	89	64	53	37	68	65	31
Southern Region IAIU	67	100	58	71	92	70	85	90	90	69	66	57	83	77	26
<b>IAIU Subtotals</b>	<b>219</b>	<b>303</b>	<b>252</b>	<b>233</b>	<b>266</b>	<b>238</b>	<b>291</b>	<b>258</b>	<b>325</b>	<b>231</b>	<b>213</b>	<b>177</b>	<b>254</b>	<b>251</b>	<b>77</b>
<b>Unable to Determine<sup>1</sup></b>	<b>123</b>	<b>135</b>	<b>117</b>	<b>121</b>	<b>149</b>	<b>119</b>	<b>151</b>	<b>132</b>	<b>127</b>	<b>147</b>	<b>138</b>	<b>138</b>	<b>145</b>	<b>134</b>	<b>7</b>
<b>Other Offices</b>	<b>1</b>	<b>3</b>	<b>1</b>	<b>4</b>	<b>3</b>	<b>0</b>	<b>1</b>	<b>3</b>	<b>3</b>	<b>0</b>	<b>1</b>	<b>0</b>	<b>0</b>	<b>2</b>	<b>0</b>
<b>Grand Total</b>	<b>6,382</b>	<b>7,801</b>	<b>6,593</b>	<b>6,418</b>	<b>7,301</b>	<b>6,439</b>	<b>7,501</b>	<b>6,943</b>	<b>7,634</b>	<b>6,383</b>	<b>5,586</b>	<b>5,374</b>	<b>6,866</b>	<b>6,709</b>	<b>1492</b>

<sup>1</sup>CPS Reports or CWS Referrals not assigned to an office through the Assignment Designee, but were assigned to an office for an assessment or investigation.



**Table 5: Monthly Count of CPS Reports and CWS Referrals Assigned to CP&P Local Offices**

County	Local Office	Type of Referral														Total
			Sep 2018	Oct 2018	Nov 2018	Dec 2018	Jan 2019	Feb 2019	Mar 2019	Apr 2019	May 2019	June 2019	July 2019	Aug 2019	Sep 2019	
ATLANTIC	Atlantic East	CPS	132	132	139	107	140	128	148	123	150	126	110	102	127	1,664
		CWS	43	50	40	43	32	33	42	36	41	34	34	30	46	504
		<b>Total</b>	<b>175</b>	<b>182</b>	<b>179</b>	<b>150</b>	<b>172</b>	<b>161</b>	<b>190</b>	<b>159</b>	<b>191</b>	<b>160</b>	<b>144</b>	<b>132</b>	<b>173</b>	<b>2,168</b>
	Atlantic West	CPS	89	80	73	72	86	84	81	88	111	86	69	77	76	1,072
		CWS	31	18	12	21	27	29	25	26	16	33	22	26	33	319
		<b>Total</b>	<b>120</b>	<b>98</b>	<b>85</b>	<b>93</b>	<b>113</b>	<b>113</b>	<b>106</b>	<b>114</b>	<b>127</b>	<b>119</b>	<b>91</b>	<b>103</b>	<b>109</b>	<b>1,391</b>
	County Totals	CPS	221	212	212	179	226	212	229	211	261	212	179	179	203	2,736
		CWS	74	68	52	64	59	62	67	62	57	67	56	56	79	823
		<b>Total</b>	<b>295</b>	<b>280</b>	<b>264</b>	<b>243</b>	<b>285</b>	<b>274</b>	<b>296</b>	<b>273</b>	<b>318</b>	<b>279</b>	<b>235</b>	<b>235</b>	<b>282</b>	<b>3,559</b>
BERGEN	Bergen Central	CPS	88	147	103	119	137	98	129	134	160	122	91	98	131	1,557
		CWS	44	60	51	39	67	56	45	55	64	36	23	31	46	617
		<b>Total</b>	<b>132</b>	<b>207</b>	<b>154</b>	<b>158</b>	<b>204</b>	<b>154</b>	<b>174</b>	<b>189</b>	<b>224</b>	<b>158</b>	<b>114</b>	<b>129</b>	<b>177</b>	<b>2,174</b>
	Bergen South	CPS	152	187	188	155	173	139	207	173	184	155	121	117	166	2,117
		CWS	49	73	70	64	83	76	79	77	78	63	38	39	59	848
		<b>Total</b>	<b>201</b>	<b>260</b>	<b>258</b>	<b>219</b>	<b>256</b>	<b>215</b>	<b>286</b>	<b>250</b>	<b>262</b>	<b>218</b>	<b>159</b>	<b>156</b>	<b>225</b>	<b>2,965</b>
	County Totals	CPS	240	334	291	274	310	237	336	307	344	277	212	215	297	3,674
		CWS	93	133	121	103	150	132	124	132	142	99	61	70	105	1,465
		<b>Total</b>	<b>333</b>	<b>467</b>	<b>412</b>	<b>377</b>	<b>460</b>	<b>369</b>	<b>460</b>	<b>439</b>	<b>486</b>	<b>376</b>	<b>273</b>	<b>285</b>	<b>402</b>	<b>5,139</b>
BURLINGTON	Burlington East	CPS	93	131	124	128	132	150	128	142	119	117	127	108	126	1,625
		CWS	31	53	38	38	41	41	43	46	45	34	21	38	55	524
		<b>Total</b>	<b>124</b>	<b>184</b>	<b>162</b>	<b>166</b>	<b>173</b>	<b>191</b>	<b>171</b>	<b>188</b>	<b>164</b>	<b>151</b>	<b>148</b>	<b>146</b>	<b>181</b>	<b>2,149</b>
	Burlington West	CPS	113	124	121	123	123	133	122	109	137	96	85	92	133	1,511
		CWS	33	40	30	29	42	37	44	33	50	41	29	26	38	472
		<b>Total</b>	<b>146</b>	<b>164</b>	<b>151</b>	<b>152</b>	<b>165</b>	<b>170</b>	<b>166</b>	<b>142</b>	<b>187</b>	<b>137</b>	<b>114</b>	<b>118</b>	<b>171</b>	<b>1,983</b>
	County Totals	CPS	206	255	245	251	255	283	250	251	256	213	212	200	259	3,136
		CWS	64	93	68	67	83	78	87	79	95	75	50	64	93	996
		<b>Total</b>	<b>270</b>	<b>348</b>	<b>313</b>	<b>318</b>	<b>338</b>	<b>361</b>	<b>337</b>	<b>330</b>	<b>351</b>	<b>288</b>	<b>262</b>	<b>264</b>	<b>352</b>	<b>4,132</b>
CAMDEN	Camden Central	CPS	103	116	110	104	137	98	146	118	104	112	87	106	127	1,468
		CWS	36	41	27	27	31	34	34	33	33	27	16	22	27	388
		<b>Total</b>	<b>139</b>	<b>157</b>	<b>137</b>	<b>131</b>	<b>168</b>	<b>132</b>	<b>180</b>	<b>151</b>	<b>137</b>	<b>139</b>	<b>103</b>	<b>128</b>	<b>154</b>	<b>1,856</b>
	Camden East	CPS	106	110	103	81	95	83	123	107	122	91	83	70	103	1,277
		CWS	44	39	29	26	35	21	38	31	34	27	36	15	34	409
		<b>Total</b>	<b>150</b>	<b>149</b>	<b>132</b>	<b>107</b>	<b>130</b>	<b>104</b>	<b>161</b>	<b>138</b>	<b>156</b>	<b>118</b>	<b>119</b>	<b>85</b>	<b>137</b>	<b>1,686</b>
	Camden North	CPS	91	119	94	96	110	111	110	121	117	93	77	84	111	1,334
		CWS	34	42	31	19	36	42	43	30	34	26	32	25	47	441
		<b>Total</b>	<b>125</b>	<b>161</b>	<b>125</b>	<b>115</b>	<b>146</b>	<b>153</b>	<b>153</b>	<b>151</b>	<b>151</b>	<b>119</b>	<b>109</b>	<b>109</b>	<b>158</b>	<b>1,775</b>
	Camden South	CPS	98	108	89	91	103	73	97	95	118	77	83	68	91	1,191
		CWS	31	31	32	25	30	23	28	24	26	31	28	32	32	373
		<b>Total</b>	<b>129</b>	<b>139</b>	<b>121</b>	<b>116</b>	<b>133</b>	<b>96</b>	<b>125</b>	<b>119</b>	<b>144</b>	<b>108</b>	<b>111</b>	<b>100</b>	<b>123</b>	<b>1,564</b>
	County Totals	CPS	398	453	396	372	445	365	476	441	461	373	330	328	432	5,270
		CWS	145	153	119	97	132	120	143	118	127	111	112	94	140	1,611
		<b>Total</b>	<b>543</b>	<b>606</b>	<b>515</b>	<b>469</b>	<b>577</b>	<b>485</b>	<b>619</b>	<b>559</b>	<b>588</b>	<b>484</b>	<b>442</b>	<b>422</b>	<b>572</b>	<b>6,881</b>
CAPE MAY	Cape May	CPS	89	64	56	60	79	63	58	75	57	63	72	67	87	890
		CWS	20	23	17	8	24	20	16	13	13	19	24	13	25	235
		<b>Total</b>	<b>109</b>	<b>87</b>	<b>73</b>	<b>68</b>	<b>103</b>	<b>83</b>	<b>74</b>	<b>88</b>	<b>70</b>	<b>82</b>	<b>96</b>	<b>80</b>	<b>112</b>	<b>1,125</b>
	County Totals	CPS	89	64	56	60	79	63	58	75	57	63	72	67	87	890
		<b>Total</b>	<b>109</b>	<b>87</b>	<b>73</b>	<b>68</b>	<b>103</b>	<b>83</b>	<b>74</b>	<b>88</b>	<b>70</b>	<b>82</b>	<b>96</b>	<b>80</b>	<b>112</b>	<b>1,125</b>
CUMBERLAND	Cumberland East	CPS	60	55	47	45	43	54	68	58	49	50	45	50	51	675
		CWS	15	18	15	13	17	9	13	12	25	24	12	13	9	195
		<b>Total</b>	<b>75</b>	<b>73</b>	<b>62</b>	<b>58</b>	<b>60</b>	<b>63</b>	<b>81</b>	<b>70</b>	<b>74</b>	<b>74</b>	<b>57</b>	<b>63</b>	<b>60</b>	<b>870</b>
	Cumberland West	CPS	118	116	106	116	119	100	124	103	116	118	101	75	118	1,430
		CWS	32	43	36	26	39	28	30	29	29	22	29	20	28	391
		<b>Total</b>	<b>150</b>	<b>159</b>	<b>142</b>	<b>142</b>	<b>158</b>	<b>128</b>	<b>154</b>	<b>132</b>	<b>145</b>	<b>140</b>	<b>130</b>	<b>95</b>	<b>146</b>	<b>1,821</b>
	County Totals	CPS	178	171	153	161	162	154	192	161	165	168	146	125	169	2,105
		CWS	47	61	51	39	56	37	43	41	54	46	41	33	37	586
		<b>Total</b>	<b>225</b>	<b>232</b>	<b>204</b>	<b>200</b>	<b>218</b>	<b>191</b>	<b>235</b>	<b>202</b>	<b>219</b>	<b>214</b>	<b>187</b>	<b>158</b>	<b>206</b>	<b>2,691</b>

**Table 5: Monthly Count of CPS Reports and CWS Referrals Assigned to CP&P Local Offices**

County	Local Office	Type of Referral														Total
			Sep 2018	Oct 2018	Nov 2018	Dec 2018	Jan 2019	Feb 2019	Mar 2019	Apr 2019	May 2019	June 2019	July 2019	Aug 2019	Sep 2019	
ESSEX	Essex Central	CPS	68	97	103	90	107	97	107	89	102	93	94	88	111	1,246
		CWS	41	35	35	26	37	33	42	26	34	36	36	25	32	438
		<b>Total</b>	<b>109</b>	<b>132</b>	<b>138</b>	<b>116</b>	<b>144</b>	<b>130</b>	<b>149</b>	<b>115</b>	<b>136</b>	<b>129</b>	<b>130</b>	<b>113</b>	<b>143</b>	<b>1,684</b>
	Essex North	CPS	65	82	74	65	72	76	73	76	85	62	53	58	65	906
		CWS	28	31	25	20	32	25	24	21	29	32	17	31	27	342
		<b>Total</b>	<b>93</b>	<b>113</b>	<b>99</b>	<b>85</b>	<b>104</b>	<b>101</b>	<b>97</b>	<b>97</b>	<b>114</b>	<b>94</b>	<b>70</b>	<b>89</b>	<b>92</b>	<b>1,248</b>
	Essex South	CPS	63	80	70	77	86	76	94	90	94	71	48	46	66	961
		CWS	28	44	24	20	27	46	35	39	32	23	15	26	20	379
		<b>Total</b>	<b>91</b>	<b>124</b>	<b>94</b>	<b>97</b>	<b>113</b>	<b>122</b>	<b>129</b>	<b>129</b>	<b>126</b>	<b>94</b>	<b>63</b>	<b>72</b>	<b>86</b>	<b>1,340</b>
	Newark Center City	CPS	102	123	91	98	103	96	89	96	128	85	86	95	101	1,293
		CWS	27	44	36	25	38	32	33	31	34	31	27	23	36	417
		<b>Total</b>	<b>129</b>	<b>167</b>	<b>127</b>	<b>123</b>	<b>141</b>	<b>128</b>	<b>122</b>	<b>127</b>	<b>162</b>	<b>116</b>	<b>113</b>	<b>118</b>	<b>137</b>	<b>1,710</b>
	Newark Northeast	CPS	76	117	105	101	111	83	112	104	118	89	84	77	94	1,271
		CWS	29	58	30	24	28	26	35	38	29	25	29	22	28	401
<b>Total</b>		<b>105</b>	<b>175</b>	<b>135</b>	<b>125</b>	<b>139</b>	<b>109</b>	<b>147</b>	<b>142</b>	<b>147</b>	<b>114</b>	<b>113</b>	<b>99</b>	<b>122</b>	<b>1,672</b>	
Newark South	CPS	93	111	92	102	118	103	116	98	121	118	85	90	104	1,351	
	CWS	46	37	27	46	39	30	35	32	45	28	30	41	29	465	
	<b>Total</b>	<b>139</b>	<b>148</b>	<b>119</b>	<b>148</b>	<b>157</b>	<b>133</b>	<b>151</b>	<b>130</b>	<b>166</b>	<b>146</b>	<b>115</b>	<b>131</b>	<b>133</b>	<b>1,816</b>	
County Totals	CPS	467	610	535	533	597	531	591	553	648	518	450	454	541	7,028	
	CWS	199	249	177	161	201	192	204	187	203	175	154	168	172	2,442	
	<b>Total</b>	<b>666</b>	<b>859</b>	<b>712</b>	<b>694</b>	<b>798</b>	<b>723</b>	<b>795</b>	<b>740</b>	<b>851</b>	<b>693</b>	<b>604</b>	<b>622</b>	<b>713</b>	<b>9,470</b>	
GLOUCESTER	Gloucester East	CPS	86	104	85	70	108	88	104	101	134	114	80	92	98	1,264
		CWS	22	41	25	30	29	28	29	42	33	23	26	21	19	368
		<b>Total</b>	<b>108</b>	<b>145</b>	<b>110</b>	<b>100</b>	<b>137</b>	<b>116</b>	<b>133</b>	<b>143</b>	<b>167</b>	<b>137</b>	<b>106</b>	<b>113</b>	<b>117</b>	<b>1,632</b>
	Gloucester West	CPS	79	92	95	105	130	101	112	129	139	105	115	85	120	1,407
		CWS	28	23	30	28	35	33	27	24	35	23	29	34	22	371
		<b>Total</b>	<b>107</b>	<b>115</b>	<b>125</b>	<b>133</b>	<b>165</b>	<b>134</b>	<b>139</b>	<b>153</b>	<b>174</b>	<b>128</b>	<b>144</b>	<b>119</b>	<b>142</b>	<b>1,778</b>
	County Totals	CPS	165	196	180	175	238	189	216	230	273	219	195	177	218	2,671
CWS		50	64	55	58	64	61	56	66	68	46	55	55	41	739	
<b>Total</b>		<b>215</b>	<b>260</b>	<b>235</b>	<b>233</b>	<b>302</b>	<b>250</b>	<b>272</b>	<b>296</b>	<b>341</b>	<b>265</b>	<b>250</b>	<b>232</b>	<b>259</b>	<b>3,410</b>	
HUDSON	Hudson Central	CPS	93	141	91	117	107	104	129	113	116	101	102	94	90	1,398
		CWS	43	43	37	41	47	37	46	35	20	19	32	22	35	457
		<b>Total</b>	<b>136</b>	<b>184</b>	<b>128</b>	<b>158</b>	<b>154</b>	<b>141</b>	<b>175</b>	<b>148</b>	<b>136</b>	<b>120</b>	<b>134</b>	<b>116</b>	<b>125</b>	<b>1,855</b>
	Hudson North	CPS	71	92	62	72	87	67	81	77	95	65	57	36	78	940
		CWS	26	33	28	27	40	28	28	30	33	26	21	22	20	362
		<b>Total</b>	<b>97</b>	<b>125</b>	<b>90</b>	<b>99</b>	<b>127</b>	<b>95</b>	<b>109</b>	<b>107</b>	<b>128</b>	<b>91</b>	<b>78</b>	<b>58</b>	<b>98</b>	<b>1,302</b>
	Hudson South	CPS	41	60	48	48	55	47	66	52	63	51	37	45	46	659
		CWS	34	23	35	22	15	22	25	21	44	36	14	14	13	318
		<b>Total</b>	<b>75</b>	<b>83</b>	<b>83</b>	<b>70</b>	<b>70</b>	<b>69</b>	<b>91</b>	<b>73</b>	<b>107</b>	<b>87</b>	<b>51</b>	<b>59</b>	<b>59</b>	<b>977</b>
	Hudson West	CPS	84	94	87	72	87	69	93	97	105	102	58	53	86	1,087
		CWS	34	54	32	26	37	36	50	32	34	22	25	21	32	435
		<b>Total</b>	<b>118</b>	<b>148</b>	<b>119</b>	<b>98</b>	<b>124</b>	<b>105</b>	<b>143</b>	<b>129</b>	<b>139</b>	<b>124</b>	<b>83</b>	<b>74</b>	<b>118</b>	<b>1,522</b>
	County Totals	CPS	289	387	288	309	336	287	369	339	379	319	254	228	300	4,084
CWS		137	153	132	116	139	123	149	118	131	103	92	79	100	1,572	
<b>Total</b>		<b>426</b>	<b>540</b>	<b>420</b>	<b>425</b>	<b>475</b>	<b>410</b>	<b>518</b>	<b>457</b>	<b>510</b>	<b>422</b>	<b>346</b>	<b>307</b>	<b>400</b>	<b>5,656</b>	
HUNTERDON	Hunterdon	CPS	40	56	44	47	33	33	52	42	53	47	31	33	56	567
		CWS	17	19	14	12	15	19	19	8	14	17	11	15	18	198
		<b>Total</b>	<b>57</b>	<b>75</b>	<b>58</b>	<b>59</b>	<b>48</b>	<b>52</b>	<b>71</b>	<b>50</b>	<b>67</b>	<b>64</b>	<b>42</b>	<b>48</b>	<b>74</b>	<b>765</b>
	County Totals	CPS	40	56	44	47	33	33	52	42	53	47	31	33	56	567
		CWS	17	19	14	12	15	19	19	8	14	17	11	15	18	198
<b>Total</b>	<b>57</b>	<b>75</b>	<b>58</b>	<b>59</b>	<b>48</b>	<b>52</b>	<b>71</b>	<b>50</b>	<b>67</b>	<b>64</b>	<b>42</b>	<b>48</b>	<b>74</b>	<b>765</b>		
MERCER	Mercer North	CPS	84	139	113	110	117	114	125	110	114	95	81	90	113	1,405
		CWS	25	57	50	31	39	43	41	44	45	46	45	24	30	520
		<b>Total</b>	<b>109</b>	<b>196</b>	<b>163</b>	<b>141</b>	<b>156</b>	<b>157</b>	<b>166</b>	<b>154</b>	<b>159</b>	<b>141</b>	<b>126</b>	<b>114</b>	<b>143</b>	<b>1,925</b>
	Mercer South	CPS	89	125	95	109	101	104	125	107	97	122	112	116	107	1,409
		CWS	33	44	40	33	41	40	40	34	36	35	26	35	26	463
		<b>Total</b>	<b>122</b>	<b>169</b>	<b>135</b>	<b>142</b>	<b>142</b>	<b>144</b>	<b>165</b>	<b>141</b>	<b>133</b>	<b>157</b>	<b>138</b>	<b>151</b>	<b>133</b>	<b>1,872</b>
	County Totals	CPS	173	264	208	219	218	218	250	217	211	217	193	206	220	2,814
CWS		58	101	90	64	80	83	81	78	81	81	71	59	56	983	
<b>Total</b>	<b>231</b>	<b>365</b>	<b>298</b>	<b>283</b>	<b>298</b>	<b>301</b>	<b>331</b>	<b>295</b>	<b>292</b>	<b>298</b>	<b>264</b>	<b>265</b>	<b>276</b>	<b>3,797</b>		

**Table 5: Monthly Count of CPS Reports and CWS Referrals Assigned to CP&P Local Offices**

County	Local Office	Type of Referral														Total
			Sep 2018	Oct 2018	Nov 2018	Dec 2018	Jan 2019	Feb 2019	Mar 2019	Apr 2019	May 2019	June 2019	July 2019	Aug 2019	Sep 2019	
MIDDLESEX	Middlesex Central	CPS	75	116	93	102	125	113	126	91	110	85	83	77	103	1299
		CWS	30	31	28	33	33	38	25	36	37	23	25	24	26	389
		<b>Total</b>	<b>105</b>	<b>147</b>	<b>121</b>	<b>135</b>	<b>158</b>	<b>151</b>	<b>151</b>	<b>127</b>	<b>147</b>	<b>108</b>	<b>108</b>	<b>101</b>	<b>129</b>	<b>1688</b>
	Middlesex Coastal	CPS	120	161	110	120	148	130	127	133	149	113	88	115	136	1650
		CWS	39	49	39	42	49	43	46	34	39	37	26	32	37	512
		<b>Total</b>	<b>159</b>	<b>210</b>	<b>149</b>	<b>162</b>	<b>197</b>	<b>173</b>	<b>173</b>	<b>167</b>	<b>188</b>	<b>150</b>	<b>114</b>	<b>147</b>	<b>173</b>	<b>2162</b>
	Middlesex West	CPS	129	168	108	138	126	116	132	116	125	110	80	76	136	1560
		CWS	40	38	48	37	46	36	49	39	45	44	35	33	51	541
		<b>Total</b>	<b>169</b>	<b>206</b>	<b>156</b>	<b>175</b>	<b>172</b>	<b>152</b>	<b>181</b>	<b>155</b>	<b>170</b>	<b>154</b>	<b>115</b>	<b>109</b>	<b>187</b>	<b>2101</b>
	County Totals	CPS	324	445	311	360	399	359	385	340	384	308	251	268	375	4509
CWS		109	118	115	112	128	117	120	109	121	104	86	89	114	1442	
<b>Total</b>		<b>433</b>	<b>563</b>	<b>426</b>	<b>472</b>	<b>527</b>	<b>476</b>	<b>505</b>	<b>449</b>	<b>505</b>	<b>412</b>	<b>337</b>	<b>357</b>	<b>489</b>	<b>5951</b>	
MONMOUTH	Monmouth North	CPS	159	165	133	158	190	128	181	147	203	142	119	120	172	2017
		CWS	61	62	42	49	64	49	57	49	63	55	42	39	37	669
		<b>Total</b>	<b>220</b>	<b>227</b>	<b>175</b>	<b>207</b>	<b>254</b>	<b>177</b>	<b>238</b>	<b>196</b>	<b>266</b>	<b>197</b>	<b>161</b>	<b>159</b>	<b>209</b>	<b>2686</b>
	Monmouth South	CPS	149	149	151	100	145	114	138	120	118	136	110	101	127	1658
		CWS	41	50	54	45	34	42	48	43	40	43	24	27	42	533
		<b>Total</b>	<b>190</b>	<b>199</b>	<b>205</b>	<b>145</b>	<b>179</b>	<b>156</b>	<b>186</b>	<b>163</b>	<b>158</b>	<b>179</b>	<b>134</b>	<b>128</b>	<b>169</b>	<b>2191</b>
	County Totals	CPS	308	314	284	258	335	242	319	267	321	278	229	221	299	3675
		CWS	102	112	96	94	98	91	105	92	103	98	66	66	79	1202
		<b>Total</b>	<b>410</b>	<b>426</b>	<b>380</b>	<b>352</b>	<b>433</b>	<b>333</b>	<b>424</b>	<b>359</b>	<b>424</b>	<b>376</b>	<b>295</b>	<b>287</b>	<b>378</b>	<b>4877</b>
	MORRIS	Morris East	CPS	75	100	84	91	84	75	74	94	107	69	63	65	84
CWS			24	42	19	37	49	22	21	21	36	16	21	16	33	357
<b>Total</b>			<b>99</b>	<b>142</b>	<b>103</b>	<b>128</b>	<b>133</b>	<b>97</b>	<b>95</b>	<b>115</b>	<b>143</b>	<b>85</b>	<b>84</b>	<b>81</b>	<b>117</b>	<b>1422</b>
Morris West		CPS	84	118	92	89	89	82	106	84	125	87	80	72	116	1224
		CWS	32	32	29	25	42	36	43	42	35	28	17	34	33	428
		<b>Total</b>	<b>116</b>	<b>150</b>	<b>121</b>	<b>114</b>	<b>131</b>	<b>118</b>	<b>149</b>	<b>126</b>	<b>160</b>	<b>115</b>	<b>97</b>	<b>106</b>	<b>149</b>	<b>1652</b>
County Totals		CPS	159	218	176	180	173	157	180	178	232	156	143	137	200	2289
		CWS	56	74	48	62	91	58	64	63	71	44	38	50	66	785
		<b>Total</b>	<b>215</b>	<b>292</b>	<b>224</b>	<b>242</b>	<b>264</b>	<b>215</b>	<b>244</b>	<b>241</b>	<b>303</b>	<b>200</b>	<b>181</b>	<b>187</b>	<b>266</b>	<b>3074</b>
OCEAN		Ocean North	CPS	154	203	178	163	165	157	179	209	219	148	149	134	189
	CWS		40	68	60	46	65	48	53	53	63	40	48	41	55	680
	<b>Total</b>		<b>194</b>	<b>271</b>	<b>238</b>	<b>209</b>	<b>230</b>	<b>205</b>	<b>232</b>	<b>262</b>	<b>282</b>	<b>188</b>	<b>197</b>	<b>175</b>	<b>244</b>	<b>2927</b>
	Ocean South	CPS	160	166	170	160	147	147	163	148	140	157	152	121	146	1977
		CWS	32	45	42	39	51	30	45	50	37	41	36	41	38	527
		<b>Total</b>	<b>192</b>	<b>211</b>	<b>212</b>	<b>199</b>	<b>198</b>	<b>177</b>	<b>208</b>	<b>198</b>	<b>177</b>	<b>198</b>	<b>188</b>	<b>162</b>	<b>184</b>	<b>2504</b>
	County Totals	CPS	314	369	348	323	312	304	342	357	359	305	301	255	335	4224
		CWS	72	113	102	85	116	78	98	103	100	81	84	82	93	1207
		<b>Total</b>	<b>386</b>	<b>482</b>	<b>450</b>	<b>408</b>	<b>428</b>	<b>382</b>	<b>440</b>	<b>460</b>	<b>459</b>	<b>386</b>	<b>385</b>	<b>337</b>	<b>428</b>	<b>5431</b>
	PASSAIC	Passaic Central	CPS	164	207	177	157	192	160	181	195	198	157	132	119	183
CWS			55	93	66	68	66	59	94	71	79	55	35	36	65	842
<b>Total</b>			<b>219</b>	<b>300</b>	<b>243</b>	<b>225</b>	<b>258</b>	<b>219</b>	<b>275</b>	<b>266</b>	<b>277</b>	<b>212</b>	<b>167</b>	<b>155</b>	<b>248</b>	<b>3064</b>
Passaic North		CPS	128	189	158	146	148	124	181	172	188	160	139	121	154	2008
		CWS	74	78	60	67	76	51	71	47	70	59	50	51	41	795
		<b>Total</b>	<b>202</b>	<b>267</b>	<b>218</b>	<b>213</b>	<b>224</b>	<b>175</b>	<b>252</b>	<b>219</b>	<b>258</b>	<b>219</b>	<b>189</b>	<b>172</b>	<b>195</b>	<b>2803</b>
County Totals		CPS	292	396	335	303	340	284	362	367	386	317	271	240	337	4230
		CWS	129	171	126	135	142	110	165	118	149	114	85	87	106	1637
		<b>Total</b>	<b>421</b>	<b>567</b>	<b>461</b>	<b>438</b>	<b>482</b>	<b>394</b>	<b>527</b>	<b>485</b>	<b>535</b>	<b>431</b>	<b>356</b>	<b>327</b>	<b>443</b>	<b>5867</b>
SALEM		Salem	CPS	73	68	53	53	77	50	64	71	63	40	63	62	74
	CWS		31	22	19	17	20	21	11	20	14	17	20	23	18	253
	<b>Total</b>		<b>104</b>	<b>90</b>	<b>72</b>	<b>70</b>	<b>97</b>	<b>71</b>	<b>75</b>	<b>91</b>	<b>77</b>	<b>57</b>	<b>83</b>	<b>85</b>	<b>92</b>	<b>1064</b>
	County Totals	CPS	73	68	53	53	77	50	64	71	63	40	63	62	74	811
		CWS	31	22	19	17	20	21	11	20	14	17	20	23	18	253
		<b>Total</b>	<b>104</b>	<b>90</b>	<b>72</b>	<b>70</b>	<b>97</b>	<b>71</b>	<b>75</b>	<b>91</b>	<b>77</b>	<b>57</b>	<b>83</b>	<b>85</b>	<b>92</b>	<b>1064</b>
SOMERSET	Somerset	CPS	125	153	137	128	122	122	161	116	128	121	117	84	140	1654
		CWS	30	47	44	37	38	36	35	42	39	34	38	30	40	490
		<b>Total</b>	<b>155</b>	<b>200</b>	<b>181</b>	<b>165</b>	<b>160</b>	<b>158</b>	<b>196</b>	<b>158</b>	<b>167</b>	<b>155</b>	<b>155</b>	<b>114</b>	<b>180</b>	<b>2144</b>
	County Totals	CPS	125	153	137	128	122	122	161	116	128	121	117	84	140	1654
		CWS	30	47	44	37	38	36	35	42	39	34	38	30	40	490
		<b>Total</b>	<b>155</b>	<b>200</b>	<b>181</b>	<b>165</b>	<b>160</b>	<b>158</b>	<b>196</b>	<b>158</b>	<b>167</b>	<b>155</b>	<b>155</b>	<b>114</b>	<b>180</b>	<b>2144</b>

**Table 5: Monthly Count of CPS Reports and CWS Referrals Assigned to CP&P Local Offices**

County	Local Office	Type of Referral														Total
			Sep 2018	Oct 2018	Nov 2018	Dec 2018	Jan 2019	Feb 2019	Mar 2019	Apr 2019	May 2019	June 2019	July 2019	Aug 2019	Sep 2019	
SUSSEX	Sussex	CPS	72	90	64	67	77	88	87	75	81	77	64	84	104	1030
		CWS	27	30	17	30	23	34	29	19	33	27	19	23	21	332
		<b>Total</b>	<b>99</b>	<b>120</b>	<b>81</b>	<b>97</b>	<b>100</b>	<b>122</b>	<b>116</b>	<b>94</b>	<b>114</b>	<b>104</b>	<b>83</b>	<b>107</b>	<b>125</b>	<b>1362</b>
	County Totals	CPS	72	90	64	67	77	88	87	75	81	77	64	84	104	1030
		CWS	27	30	17	30	23	34	29	19	33	27	19	23	21	332
		<b>Total</b>	<b>99</b>	<b>120</b>	<b>81</b>	<b>97</b>	<b>100</b>	<b>122</b>	<b>116</b>	<b>94</b>	<b>114</b>	<b>104</b>	<b>83</b>	<b>107</b>	<b>125</b>	<b>1362</b>
UNION	Union Central	CPS	76	98	85	81	104	87	99	100	95	95	70	75	82	1147
		CWS	25	33	26	34	43	27	32	31	29	25	19	17	26	367
		<b>Total</b>	<b>101</b>	<b>131</b>	<b>111</b>	<b>115</b>	<b>147</b>	<b>114</b>	<b>131</b>	<b>131</b>	<b>124</b>	<b>120</b>	<b>89</b>	<b>92</b>	<b>108</b>	<b>1514</b>
	Union East	CPS	89	103	93	94	94	104	98	94	104	80	76	63	68	1160
		CWS	34	36	29	26	35	38	45	22	30	25	21	22	29	392
		<b>Total</b>	<b>123</b>	<b>139</b>	<b>122</b>	<b>120</b>	<b>129</b>	<b>142</b>	<b>143</b>	<b>116</b>	<b>134</b>	<b>105</b>	<b>97</b>	<b>85</b>	<b>97</b>	<b>1552</b>
	Union West	CPS	77	84	88	83	98	79	98	76	103	71	68	55	94	1074
		CWS	27	42	30	25	27	24	33	30	37	21	22	20	22	360
		<b>Total</b>	<b>104</b>	<b>126</b>	<b>118</b>	<b>108</b>	<b>125</b>	<b>103</b>	<b>131</b>	<b>106</b>	<b>140</b>	<b>92</b>	<b>90</b>	<b>75</b>	<b>116</b>	<b>1434</b>
	County Totals	CPS	242	285	266	258	296	270	295	270	302	246	214	193	244	3381
		CWS	86	111	85	85	105	89	110	83	96	71	62	59	77	1119
		<b>Total</b>	<b>328</b>	<b>396</b>	<b>351</b>	<b>343</b>	<b>401</b>	<b>359</b>	<b>405</b>	<b>353</b>	<b>398</b>	<b>317</b>	<b>276</b>	<b>252</b>	<b>321</b>	<b>4500</b>
WARREN	Warren	CPS	86	78	71	77	61	54	88	97	81	76	62	69	79	979
		CWS	32	27	22	27	28	19	30	34	23	26	20	19	18	325
		<b>Total</b>	<b>118</b>	<b>105</b>	<b>93</b>	<b>104</b>	<b>89</b>	<b>73</b>	<b>118</b>	<b>131</b>	<b>104</b>	<b>102</b>	<b>82</b>	<b>88</b>	<b>97</b>	<b>1304</b>
	County Totals	CPS	86	78	71	77	61	54	88	97	81	76	62	69	79	979
		CWS	32	27	22	27	28	19	30	34	23	26	20	19	18	325
		<b>Total</b>	<b>118</b>	<b>105</b>	<b>93</b>	<b>104</b>	<b>89</b>	<b>73</b>	<b>118</b>	<b>131</b>	<b>104</b>	<b>102</b>	<b>82</b>	<b>88</b>	<b>97</b>	<b>1304</b>
<b>County CPS Referral Total</b>	<b>CPS</b>	<b>4,461</b>	<b>5,418</b>	<b>4,653</b>	<b>4,587</b>	<b>5,091</b>	<b>4,502</b>	<b>5,302</b>	<b>4,965</b>	<b>5,445</b>	<b>4,550</b>	<b>3,989</b>	<b>3,825</b>	<b>4,969</b>	<b>61,757</b>	
<b>County CWS Referral Total</b>	<b>CWS</b>	<b>1,578</b>	<b>1,942</b>	<b>1,570</b>	<b>1,473</b>	<b>1,792</b>	<b>1,580</b>	<b>1,756</b>	<b>1,585</b>	<b>1,734</b>	<b>1,455</b>	<b>1,245</b>	<b>1,234</b>	<b>1,498</b>	<b>20,442</b>	
<b>County Referral Total</b>	<b>Total</b>	<b>6,039</b>	<b>7,360</b>	<b>6,223</b>	<b>6,060</b>	<b>6,883</b>	<b>6,082</b>	<b>7,058</b>	<b>6,550</b>	<b>7,179</b>	<b>6,005</b>	<b>5,234</b>	<b>5,059</b>	<b>6,467</b>	<b>82,199</b>	
Central Region IAIU	CPS	39	67	63	47	61	47	61	66	82	57	58	41	60	749	
	CWS	0	0	0	0	0	0	0	0	0	0	0	0	0	0	
	<b>Total</b>	<b>39</b>	<b>67</b>	<b>63</b>	<b>47</b>	<b>61</b>	<b>47</b>	<b>61</b>	<b>66</b>	<b>82</b>	<b>57</b>	<b>58</b>	<b>41</b>	<b>60</b>	<b>749</b>	
Metro Region IAIU	CPS	50	65	61	51	55	47	62	45	64	41	36	42	43	662	
	CWS	0	0	0	0	0	0	0	0	0	0	0	0	0	0	
	<b>Total</b>	<b>50</b>	<b>65</b>	<b>61</b>	<b>51</b>	<b>55</b>	<b>47</b>	<b>62</b>	<b>45</b>	<b>64</b>	<b>41</b>	<b>36</b>	<b>42</b>	<b>43</b>	<b>662</b>	
Northern Region IAIU	CPS	63	71	70	64	58	74	83	57	89	64	53	37	68	851	
	CWS	0	0	0	0	0	0	0	0	0	0	0	0	0	0	
	<b>Total</b>	<b>63</b>	<b>71</b>	<b>70</b>	<b>64</b>	<b>58</b>	<b>74</b>	<b>83</b>	<b>57</b>	<b>89</b>	<b>64</b>	<b>53</b>	<b>37</b>	<b>68</b>	<b>851</b>	
Southern Region IAIU	CPS	67	100	58	71	92	70	85	90	90	69	66	57	83	998	
	CWS	0	0	0	0	0	0	0	0	0	0	0	0	0	0	
	<b>Total</b>	<b>67</b>	<b>100</b>	<b>58</b>	<b>71</b>	<b>92</b>	<b>70</b>	<b>85</b>	<b>90</b>	<b>90</b>	<b>69</b>	<b>66</b>	<b>57</b>	<b>83</b>	<b>998</b>	
<b>IAIU CPS Subtotal</b>	<b>CPS</b>	<b>219</b>	<b>303</b>	<b>252</b>	<b>233</b>	<b>266</b>	<b>238</b>	<b>291</b>	<b>258</b>	<b>325</b>	<b>231</b>	<b>213</b>	<b>177</b>	<b>254</b>	<b>3,260</b>	
<b>IAIU CWS Subtotal</b>	<b>CWS</b>	<b>0</b>	<b>0</b>	<b>0</b>	<b>0</b>	<b>0</b>	<b>0</b>	<b>0</b>	<b>0</b>	<b>0</b>	<b>0</b>	<b>0</b>	<b>0</b>	<b>0</b>	<b>0</b>	
<b>IAIU Subtotal</b>	<b>Total</b>	<b>219</b>	<b>303</b>	<b>252</b>	<b>233</b>	<b>266</b>	<b>238</b>	<b>291</b>	<b>258</b>	<b>325</b>	<b>231</b>	<b>213</b>	<b>177</b>	<b>254</b>	<b>3,260</b>	
<b>County and IAIU CPS Subtotal</b>	<b>CPS</b>	<b>4,680</b>	<b>5,721</b>	<b>4,905</b>	<b>4,820</b>	<b>5,357</b>	<b>4,740</b>	<b>5,593</b>	<b>5,223</b>	<b>5,770</b>	<b>4,781</b>	<b>4,202</b>	<b>4,002</b>	<b>5,223</b>	<b>65,017</b>	
<b>County and IAIU CWS Subtotal</b>	<b>CWS</b>	<b>1,578</b>	<b>1,942</b>	<b>1,570</b>	<b>1,473</b>	<b>1,792</b>	<b>1,580</b>	<b>1,756</b>	<b>1,585</b>	<b>1,734</b>	<b>1,455</b>	<b>1,245</b>	<b>1,234</b>	<b>1,498</b>	<b>20,442</b>	
<b>Unable to Determine<sup>(1)</sup></b>	<b>Total</b>	<b>123</b>	<b>135</b>	<b>117</b>	<b>121</b>	<b>149</b>	<b>119</b>	<b>151</b>	<b>132</b>	<b>127</b>	<b>147</b>	<b>138</b>	<b>138</b>	<b>145</b>	<b>1,742</b>	
<b>Other Offices</b>	<b>Total</b>	<b>1</b>	<b>3</b>	<b>1</b>	<b>4</b>	<b>3</b>	<b>0</b>	<b>1</b>	<b>3</b>	<b>3</b>	<b>0</b>	<b>1</b>	<b>0</b>	<b>0</b>	<b>20</b>	
<b>Grand Total</b>	<b>Total</b>	<b>6,382</b>	<b>7,801</b>	<b>6,593</b>	<b>6,418</b>	<b>7,301</b>	<b>6,439</b>	<b>7,501</b>	<b>6,943</b>	<b>7,634</b>	<b>6,383</b>	<b>5,586</b>	<b>5,374</b>	<b>6,866</b>	<b>87,221</b>	

<sup>(1)</sup>CPS Reports or CWS Referrals not assigned to an office through the Assignment Designee, but were assigned to an office for an assessment or investigation.