
Borough of Ship Bottom **Municipal Public Access Plan**



SHIP BOTTOM
Gateway to Long Beach Island



Submitted by: The Borough of Ship Bottom

Date of Current Submittal: 8/26/2016

**Approved by the New Jersey Department of Environmental Protection:
To be determined**

**Adoption by the Borough:
Date will be added upon adoption**

**Prepared By:
Frank J. Little, Jr., PE, PP, CME
Allison S. Iannaccone, CFM
Owen, Little & Associates, Inc.
443 Atlantic City Blvd.
Beachwood, NJ 08722
732-244-1090**

Financial Assistance provided by: The Coastal Zone Management Act of 1972, as amended, administered by the Office of Coastal Management, National Oceanic and Atmospheric Administration (NOAA) through the New Jersey Department of Environmental Protection, Coastal Management Program.

Approval of this plan does not eliminate the need for any Federal, State, County or municipal permits, certifications, authorizations or other approvals that may be required by the Applicant, nor shall the approval of this plan obligate the Department to issue any permits, certifications, authorizations or other approvals required for any project described in this plan.

Index

Introduction	1
I. Municipal Public Access Vision	3
II. Public Access	6
III. Community Needs Assessment	12
IV. Implementation Plan	13
V. Relationship to the Other Regional and State Plans	19
VI. Resolution of Incorporation	20
Appendix 1 MPAP Required Sections per NJAC 8.11 (e)	21
Appendix 2 Resolution for Incorporating MPAP into Master Plan	22
Appendix 3 Tables	23
Appendix 4 Recreation and Open Space Inventory	24
Appendix 5 Sign Ordinance	25

Introduction

The intent of this document is to provide a comprehensive public access plan for the Borough of Ship Bottom which lays out their vision for providing access to tidal waters and shorelines within the municipal boundary. This Municipal Public Access Plan (MPAP) was developed in accordance with the Coastal Zone Management Rules at N.J.A.C. 7:7E-8.11. This MPAP was developed in collaboration with the New Jersey Department of Environmental Protection (NJDEP), and approved by the NJDEP on <date>. The development and implementation of this MPAP supports the policy of local determination of public access locations and facilities, while safeguarding regulatory flexibility and potential funding opportunities for Ship Bottom Borough.

Public rights of access to, and use of, the tidal shorelines and waters, including the ocean, bays, and tidal rivers, in New Jersey are founded in the Public Trust Doctrine. First set by the Roman Emperor Justinian around A.D. 500 as part of Roman civil law, the Public Trust Doctrine establishes the public's right to full use of the seashore.

Through various judicial decisions, the right of use upheld by the Public Trust Doctrine has been incorporated into many state constitutions and statutes, allowing the public the right to all lands, water and resources held in the public trust by the state, including those in New Jersey. The NJDEP adopted new rules governing public access on November 5, 2012 that enable municipalities to develop and adopt MPAPs to govern public access within their municipality. This MPAP consists of an inventory of public access locations, and plans to preserve and enhance access based on community needs and State standards.

In 2015, representatives from Ship Bottom Borough met with NJDEP staff to begin the public access planning process. This plan was then developed in collaboration with the NJDEP, various departments within Ship Bottom Borough and their planning consultant, Owen, Little & Associates, Inc. and was distributed for courtesy review by the Land Use Review Board and was submitted to the NJDEP on August 26, 2017. Upon receiving approval from the NJDEP on <date>, the MPAP was incorporated into the Recreation/Open Space Element of the Master Plan by resolution on <date>, see Appendix 2. All public access decisions made within Ship Bottom Borough after this date will be consistent with this plan.

Authority for Municipal Public Access Plans

The premise of the authorization of MPAPs is that public access to tidal waters is fundamentally linked to local conditions. Municipalities have a better awareness and are more responsive to these conditions than a broader State "one size fits all" mandated public access plan.

The voluntary development of a MPAP by Ship Bottom Borough enables the municipality to better plan, implement, maintain, and improve the provision of public access for its residents and visitors. Also, it informs and/or identifies public access requirements associated with any proposed development or redevelopment project. The MPAP was incorporated into the Recreation/Open Space Element of the municipality's Master Plan, in accordance with the Municipal Land Use Law (N.J.S.A 40:55D).

Upon approval of the MPAP by the NJDEP and incorporation into the Master Plan, Ship Bottom Borough will be responsible for ensuring that public access to tidal waterways along the municipality's shorelines is provided in accordance with this plan. For each new public access project, Ship Bottom Borough will provide NJDEP with a letter confirming its consistency with this MPAP. Any permit issued by the NJDEP will reflect, and ensure that public access requirements are satisfied in accordance with, this plan. Per N.J.A.C. 7:7E-8.11(j)4, Ship Bottom Borough is required to submit a progress report on plan implementation to NJDEP within five (5) years from date of plan adoption.

The sections of this plan as indicated below are prescribed by the Coastal Zone Management Rules, N.J.A.C. 7:7E-8.11. See Appendix 1.

I. Municipal Public Access Vision

A. Overview of Municipality

The Borough of Ship Bottom is located on Long Beach Island in Southern Ocean County. Long Beach Island is the largest barrier island community in the Barnegat Bay Watershed. The Borough has a year round population of 1,156 (2010 Census), however, the population increases dramatically in the summer months and can reach 20,000 people. With a total area of 1.001 square miles, of which 0.288 square miles is water, the Borough is situated geographically to enjoy the benefits of the associated oceanfront and bayfront shorelines. Ship Bottom Borough is void of any major industry or farmland and is considered fully developed with the exception of small infill lots or new lots created by subdivision. Given the dense population during the summer months, maintenance of existing public access locations along the Barnegat Bay and the Atlantic Ocean is paramount.

1. Public Access Description

Public Access in Ship Bottom Borough is provided by the municipality and consists of a variety of access points and facilities including beach walkways, bathroom facilities, lifeguarded beaches, surfing and fishing beaches as well as parks, playgrounds and piers. Ship Bottom Borough protects and ensures public access through ordinances and beach fees. For example, many of the open spaces or areas that provide access to tidal water are regulated by the New Jersey Department of Environmental Protection's Green Acres Program and additional ordinances are in effect to guide the use of these parcels. Also, the ordinances assist in guiding development of particular parcels unregulated by the Green Acres Program and provide regulation for same. Beach fees are collected for beach users at a daily, weekly or seasonal rate and the type of tag purchased is the decision of the purchaser, not the Borough.

SHIP BOTTOM
BOROUGH
REPRESENTS A
BARRIER ISLAND
COMMUNITY THAT
RELIES HEAVILY ON
THE SURROUNDING
WATERWAYS FOR
TOURISM AND
COMMERCE AND
PRIDES ITSELF ON
OFFERING MORE THAN
40 WAYS OF ACCESS
TO THESE DESIRABLE
SHORES

The overall goal of this MPAP is to establish the Borough of Ship Bottom's commitment to maintain and enhance all existing public access locations to and along tidal waterways and their shores

2. Ship Bottom Borough Tidal Waterways and Lands

Map 1 shows all the tidal waterways within the municipality and all lands held by the municipality. More specifically, Ship Bottom's tidal waterways consist of the Atlantic Ocean to its east and the Barnegat Bay to its west. The adjacent bay is called specifically the Little Egg Harbor Bay and although the Barnegat Inlet is farther north and actually adjacent to Barnegat Light, a significant portion of the Borough's recreational and economic activities are dependent upon this inlet.





SHIP BOTTOM BOROUGH

MAP 1: TIDAL WATERWAYS AND LANDS

0 250 500 1,000

Feet

Owen, Little and Associates, Inc.
443 Atlantic City Boulevard
Beachwood, NJ 08722
(732)244-1090

B. Municipal Public Access Goals and Objectives

1. Goals & Objectives

- a. Participate in programs, both Federal and State, that preserve environmentally critical, sensitive or beneficial parcels of land
- b. Promote the continued balance of land uses while ensuring adequate open space and unrestricted access remains.
- c. Maintain and continue to promote a visually pleasing aesthetic along the waterfront areas
- d. Continue to upgrade existing municipal park facilities
- e. Remain motivated to increase and improve public access locations
- f. Utilize native plantings when restoring areas adjacent to tidal water
- g. Remain cognizant of stormwater runoff and its effect on the estuary
- h. Establish an Ordinance that promotes the installation of Public Access signage where appropriate
- i. Prioritize the reconstruction of vulnerable bulkheads and ensure shoreline stabilization for public safety and access

In addition to those goals outlined within the Master Plan below, Ship Bottom Borough establishes the following State required goals specifically for public access:

- j. All existing public access shall be maintained to the maximum extent practicable.
- k. Maintain safe and adequate access locations for fishing in those areas where fishing is safe and appropriate.
- l. Provide clear informative signage for access locations.

Ship Bottom's Municipal Public Access Plan embraces and reflects these goals and will help preserve, protect, and enhance the public's ability to access the Public Trust Lands which surround the community. The previous goals are compliant with the New Jersey Coastal Zone Management Rules (see N.J.A.C 7:7E-1.1 (c)).

2. Municipal Master Plan Consistency

The goals and objectives provided in this Municipal Public Access Plan have been reviewed and are consistent with the Ship Bottom Borough Master Plan.

Specifically, the main objectives of the Municipal Master Plan state the following:

- a. The beach is the major focus of both conservation and recreation activities in the Borough of Ship Bottom. Protection of the beach and dunes should be a primary concern of the Borough, with efforts towards beach and dune stabilization, access, visibility and maintenance.
- b. While the Borough may not be able to feasibly provide for new low income housing, the Borough serves the regional welfare, including the welfare of lower income families, by maintaining the quality and accessibility of the beach as a regional recreation and conservation resource and this resource should be protected.
- c. Conservation of existing natural resources should be an integral part of the planning process, with special attention to the constraints of environmentally critical and sensitive areas.
- d. The preservation of the existing open space within the Borough should be safeguarded and maintained in order to provide for a balance between development and open space areas planned and used for a variety of passive and active purposes.
- e. The Development Plan should emphasize the importance of conservation, protection, maintenance and enhancement of the dunes, beaches, bulkheading and other coastal water resources.
- f. The Development Plan should encourage the retention of municipally-owned properties for the protection of oceanfront lands, for open space and recreational purposes and for future expansion of municipal facilities.
- g. The existing recreational and open spaces areas should be enhanced and improved in order to promote and maximize the use and enjoyment of these areas, consistent with the 'family resort' identity of the Borough. Adequate ancillary facilities and services should be provided to serve the needs of those using the facilities.

II. Public Access

A. Public Access Locations

Map 2, Ship Bottom Borough Public Access Locations, identifies an inventory of all public access locations within the Borough, and further describes the type of access provided as well as the shoreline condition. For the purpose of this plan, the access points have been defined as follows:

Physical Access:	A location point in which a user can access and physically enter the tidal water for the purposes of swimming, fishing, kayaking or the like.
Visual Access:	A location point in which a user can not physically access the tidal water but still utilize the water way for fishing, birdwatching, photography or sightseeing. In many cases, these locations may be hindered by bulkheads or permanent barriers to alert vehicles of the street ends and intersecting waterways.
Water Access:	A location point which is reserved for islands within the municipal boundary that is accessible only by watercraft.

B. Enhanced Public Access Locations

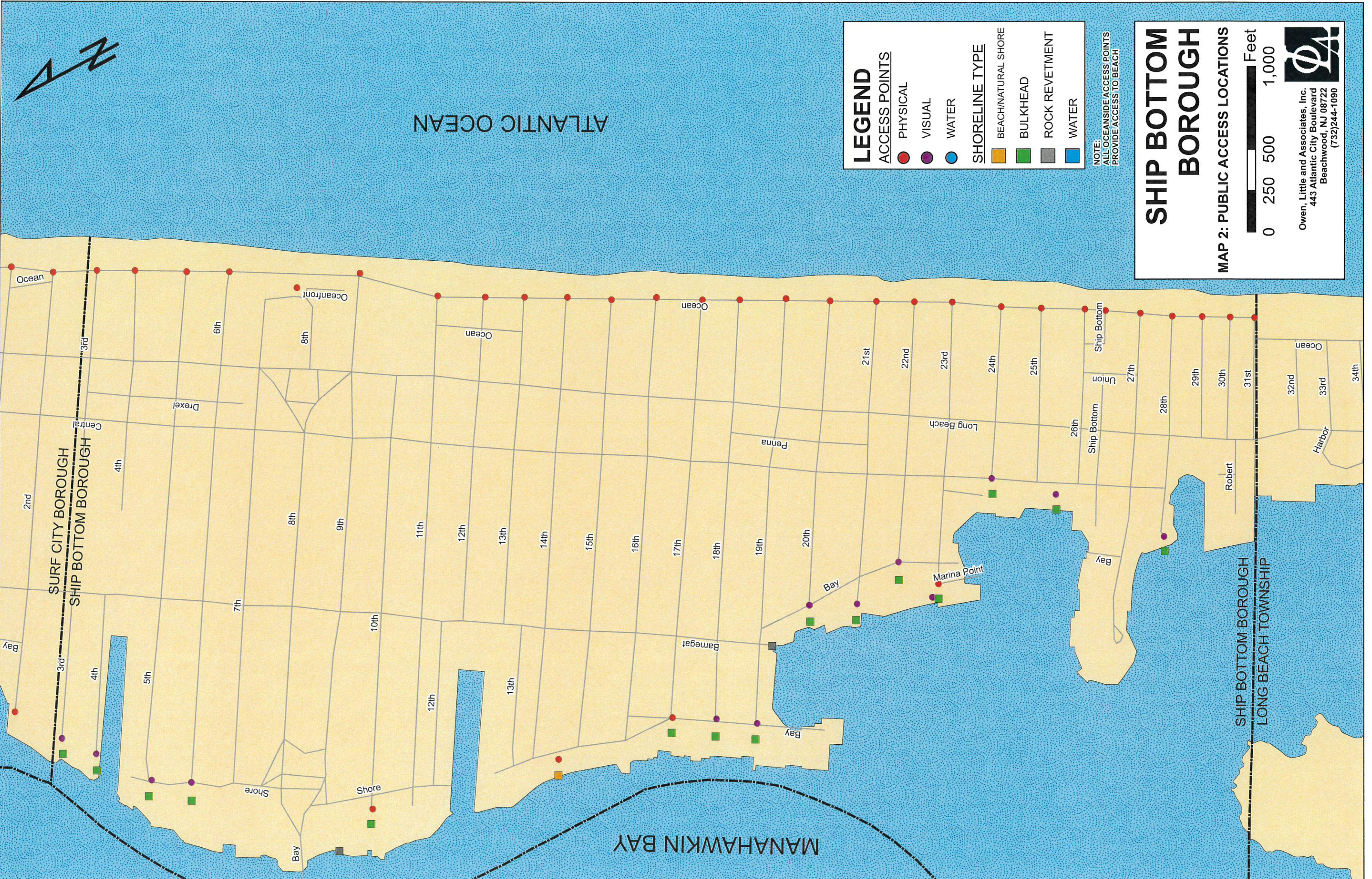
Map 3, Ship Bottom Borough's Enhanced Public Access Locations, provides an inventory of the existing public access locations that currently provide access to Public Trust Lands and Waters. See Appendix 3 for detailed information.

It is evident when surveying Ship Bottom that the community values and prioritizes public access to it



waterfront and strives to provide ample opportunity for residents and visitors to have access to the waterways. For example, Shore Avenue Park is a staffed facility in the summer months and offers not only a beach area and parking, but also a fishing and crabbing pier,

boardwalk, paddleboard/kayak ramp, boat ramp, full bathroom facilities and a playground within approximately 2.5 acres. This is a Green Acres Permanent Recreation and Open Space Area funded by the New Jersey Department of Environmental Protection.



LEGEND

ACCESS POINTS

- PHYSICAL
- VISUAL
- WATER

SHORELINE TYPE

- BEACH/NATURAL SHORE
- BULKHEAD
- ROCK REVETMENT
- WATER

NOTE:
ALL OCEANSIDE ACCESS POINTS
PROVIDE ACCESS TO BEACH

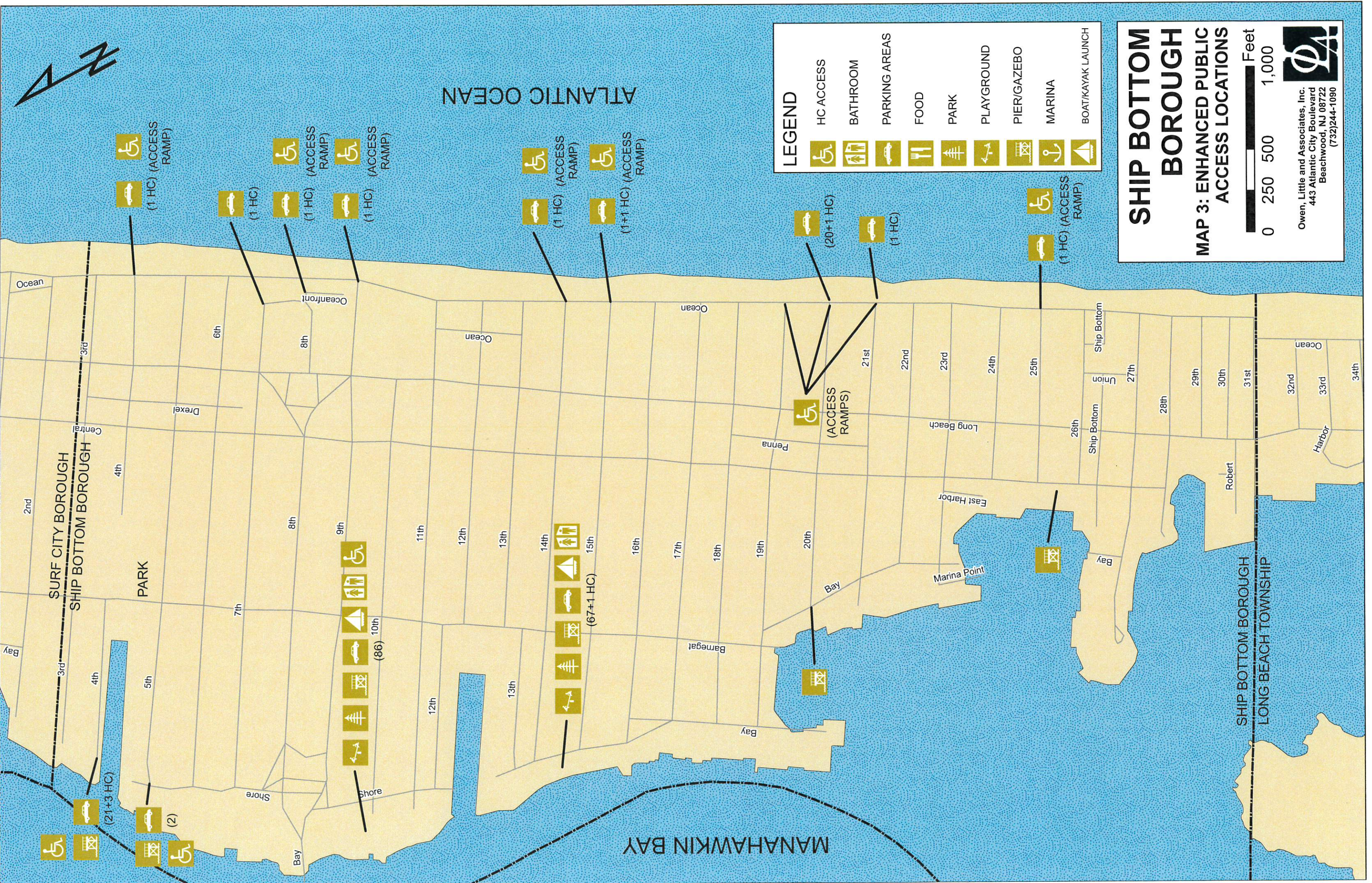
SHIP BOTTOM BOROUGH

MAP 2: PUBLIC ACCESS LOCATIONS



Owen, Little and Associates, Inc.
443 Atlantic City Boulevard
Beachwood, NJ 08722
(732)244-1090





LEGEND

	HC ACCESS
	BATHROOM
	PARKING AREAS
	FOOD
	PARK
	PLAYGROUND
	PIER/GAZEBO
	MARINA
	BOAT/KAYAK LAUNCH

SHIP BOTTOM BOROUGH

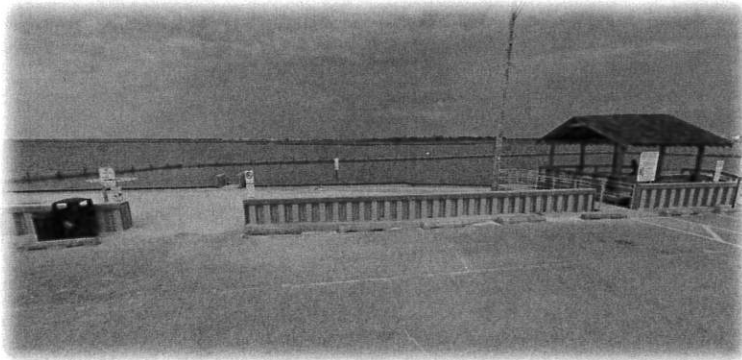
MAP 3: ENHANCED PUBLIC ACCESS LOCATIONS

0 250 500 1,000 Feet

Owen, Little and Associates, Inc.
443 Atlantic City Boulevard
Beachwood, NJ 08722
(732)244-1090

In an effort to facilitate safe crossing of the NJ State Route 72 corridor, a walkway/bikeway is provided to provide access between 8th Street and 9th Street.

Another valuable asset to Ship Bottom's Open Space is Bayfront Bay Terrace/Sunset Pointe. This bayside area offers public restrooms, a bathing beach, playground, gazebos, parking and a native garden. A handicap accessible ramp is also provided for beach access.



C. Limitations to Public Access

Per the Physical Characteristics Analysis of the September 1991 Master Plan, *"The beach and dune areas represent a very important natural resource to the Borough, and must be protected and maintained. Public accessways across the dunes to the beaches at the ends of each street must be maintained and should be appropriately improved, but additional accessways across the dunes should be discouraged"*.

In addition, the following limitations to public access currently exist:

1. Temporary Restrictions

Ship Bottom provides 45 access points to its tidal waters and the vast majority of access points are located on bayfront street ends or ocean blocks while other access points are provided via public parks or access easements. Beach and bay areas of the Borough area are designated as protected bathing areas and defined and declared to be as follows:

- All of those areas of land along the oceanfront and bayfront owned by the Borough.
- All of those areas of land along the oceanfront and bayfront in which the Borough controls the use by easement deed or deeds.
- All other areas set apart by consent of owners where protected bathing areas have been and are established.
- Public street ends on the bay front or oceanfront.

a. Hours

Places of resort shall be kept open during the usual bathing season in the Borough which is generally from the last Saturday in June and including the Sunday after Labor Day. The hours when beaches shall be open are from 10:00am to 5:00 pm., prevailing time, except during inclement weather.

b. Beach Badges

Ship Bottom Borough does utilize beach badges, commonly referred to as 'beach tags', to monitor beach access and establish regulation to ensure continued effectiveness of the beach and dune system as a line of defense from coastal storms. Children under the age of 12 do not require a badge.

No beach badge fee will be collected from any person in active military service in any of the Armed Forces of the United States and any persons who are active members of the New Jersey National Guard who have completed Initial Active Duty training, as well as their spouses and children over the age of 12.

Fees are also not collected from any individual attired in street clothing and not using beaches, bathing or recreational areas for swimming, sunbathing or other recreational purposes.

c. Beach Badge Fees are as follows:

Thirty dollars \$30.00 per person, per season, provided that application is made to the proper authorities prior to the first day of June

Forty dollars \$40.00 per person, per season, in the event that applications are made to the proper authorities on or after June 1st.

Twenty dollars \$20.00 per person, per week for any week or fractional part thereof of the bathing season.

All senior citizens sixty-five (65) years or older may obtain a seasonal badge for ten dollars \$10.00. No mail orders accepted.

Five dollars \$5.00 per person, per day, for any day or part thereof, Monday through Sunday, during the bathing season.

d. Swimming/Bathing

Bathing in the surf is prohibited during periods of storm, high wind or dangerous conditions. Swim distance is determined by the Beach Patrol Supervisor according to daily ocean and wind conditions. No person is permitted to enter or remain in the surf beyond the northerly or southerly boundaries of bathing districts as designated by red/yellow flag markers posted by lifeguards.

e. Surfing

No person shall ride or operate a surfboard in any area of the beaches not designed for that purpose. The Borough Council, by and through its Beach Committee, shall designate areas of the beaches for the use of those persons desiring to engage in surfing. In these areas, no bathing or rising shall be permitted while the areas are being used for surfing. The use of the designated surfing areas shall be subject to the control and supervision of the Beach Committee. The committee may, from time to time, change the location of the surfing areas, designate the hours of use of these areas and adopt such other regulations for the management of such areas as the public welfare may require. Any area designated for surfing purposes shall be so posted.

As of Summer 2016, surfing may commence at any area outside of a swimming area designed by flags.

f. Beach Buggies

No person shall operate a beach buggy or other motor vehicle, with the exception of authorized Borough vehicles, on any beach during the time and hours when beaches are open for bathers.

g. Boat Launching

- 1) Non-commercial Kayak Launching Area – All street ends are designated as non-commercial kayak launching areas. On the ocean side, kayaks may be launched only in areas designated by the lifeguards when beaches are guarded or at owners risk after guarded hours.

- 2) Boat Ramp – A boat ramp exists at the premises situated on the Barnegat Bay between 9th Street and 12th Street. No person shall use the property hereinafter described between 9th Street and 12th Street in the boat ramp area unless and until they have paid the required fee to the harbor master for a daily, a one way, or seasonal boat pass. All passes may be purchased from the harbormaster. The fees are as follows:

- i. Daily - \$20.00
- ii. One Way - \$20.00
- iii. Seasonal- \$70.00 per vessel

A vessel includes jet skis or personal watercraft. Seasonal decals shall be displayed on the portside of the vessel beneath the State registration number.

h. Fishing from Beaches

No person shall surf fish, fish or crab in any area of the beaches not designated for that purpose. The borough council by and through its beach committee shall designate areas of the beaches for the use of those persons desiring to engage in surf fishing or crabbing. In these areas, no bathing shall be permitted when the areas are being used for surf fishing or crabbing. The use of the designated surf fishing and crabbing areas shall be subject to the control and supervision of the Beach Committee. The Beach Committee may from time to time change the location of surf fishing and crabbing areas, designate the hours and use of the areas and adopt such other regulations for the management of the areas as the public welfare may require. Any area designated for surf fishing and crabbing purposes shall be so posted.

i. Horseback Riding

Horses, ponies, donkeys, mules and any animals in the horse family shall not be walked or ridden on any public beach at any place within the Borough of Ship Bottom at any time.

j. Ball Playing and Like Activities

No person shall throw, bat, or catch a baseball, football, basketball or softball or engage in the playing of any game endangering the health or safety of others in protecting beach and supervised bathing areas in the borough. This subsection shall not apply to the playing of beach tennis or reasonable playing “at catch” with a soft rubber or beach ball.

k. Use of Docks

No person shall anchor, tie up or permit any boat to remain alongside any dock or public landing place on land belonging to the Borough or on any street for a longer time than two hours within any twenty four hour period.

2. Permanent Restrictions

There are no known restrictions to established public access points in Ship Bottom Borough.

III. Community Needs Assessment

Ship Bottom has performed a Community Needs Assessment. The methods and results are described in the following section:

Analysis of the collected data including interviews with residents and stakeholders, site inspections and deed research indicates that adequate public access is provided to the tidal waters adjacent to Ship Bottom Borough. In addition, in the past five (5) years, Ship Bottom has initiated and completed numerous bulkhead projects at street ends to ensure shoreline stability and a safe point of access to the waterfront as well as rehabilitated or reconstructed bayside and oceanfront facilities to provide additional services to those utilizing them. In particular, a project was recently completed at Shore Avenue Park which included the construction of a paddleboard ramp.

The Borough has embraced a vision of providing increased passive recreational opportunities as well as waterfront access for different age groups at its Borough-owned park facilities. Improvements such as adding playground equipment, park benches and expanding beach areas where appropriate would help improve the local recreational facility offerings. The increase in seasonal population has warranted an expansion of current facilities throughout the community. Unlike other municipalities in the state, Ship Bottom is unique in that all recreational facilities can be accessed via different types of pedestrian oriented modes such as cycling or walking. In turn, this maximizes the potential use of the facilities by the local population. Municipal stakeholders feel it is important to continue park and access point rehabilitation projects to avoid a deterioration in the existing infrastructure.

Field interviews with local residents resulted in a consensus that the access to public waters was satisfactory. Since the Borough does have an Ordinance that permits non-commercial kayaks on all street ends, it is recommended that additional signage be added advertising this access. Also the fishing pier located at 10th Street and Shore Avenue is a popular viewing location for the sunset. It was recommended by local residents that additional benches be added to this location to support this use.

1) Completed Projects

a) Shore Avenue Park

A paddleboard ramp was installed at this park in 2014 for all users. This park has also been the



recipient of other upgrades including new public restrooms, a rock revetment for shoreline stabilization and ongoing maintenance of the jet-ski and public boat ramp which is staffed during the day with a harbormaster to assist boaters. A playground, fishing and crabbing pier, vending machines, a life jacket loaner's station and more than 80 parking spaces attract large crowds to this bay beach. A walking path a bike trail is also provided under the Route 72 Bridge which encourages people to safely visit the park from the other side of Ship Bottom by alleviating the need for those living at the north end to cross numerous lanes of traffic.

b) Handicap Access

It's evident while reviewing the Borough's access points to tidal water that providing handicap access is paramount. The bay beaches provide handicap accessible ramps directly to the sand



and provide ADA compliant handicap parking spaces. Ramps are available for the physically challenged at the oceanfront on 4th, 8th, 9th, 14th, 15th, 19th, 20th, 21st, and 25th Streets.

Beach Wheels are available with advance reservation by calling the Ship Bottom Beach Patrol. Handicap access signs are provided at the intersections of Long Beach Boulevard and 15th Street, 14th Street and 9th Street which direct beachgoers to handicap



accessible points of entry. Handicap parking stalls are also posted on the ocean blocks of 15th, 14th, 9th, 8th, 7th, and 4th Streets.

c) Gazebo Construction

A gazebo was added to the Park at 20th Street and Bay Terrace in 2015.

d) Fourth Street Park

Fourth Street Park was recently rehabilitated with new walkways which are handicap accessible, benches, a gazebo, 21 standard parking stalls and 3 handicap parking stalls.

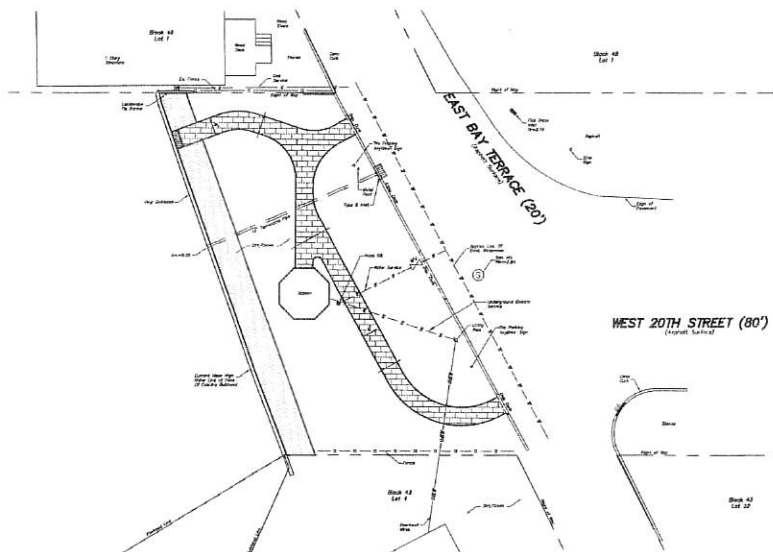
This parcel is bulkheaded and provides an excellent location for crabbing and fishing.



2) **Proposed and Ongoing Projects**

a) 20th Street Park

To date, a gazebo has been constructed onsite and curb improvements have been made. As noted on the plan below, a 4 FT paver walkway will be installed as well as utility and drainage upgrades and landscaping. The parcel can accommodate fishing along more than 80 FT of bulkhead.



b) Cost and Funding

Funding is appropriated at time of budget each year.

c) Proposed Locations and Facilities

No proposed access points are presently proposed.

B. Signage

The Borough provides signage throughout the community at each of its public access points to clearly direct users to the appropriate entrance locations. Examples of the signage is provided below:



As stated previously, it is recommended that additional signs be added at popular Bayfront street ends to advise of possible kayak or paddleboard launching.

C. Municipal Public Access Fund

At this time, Ship Bottom Borough does not have a Municipal Public Access Fund in place.

D. Army Corps of Engineers Requirements for Shore Protection Projects

Long Beach Island is an 18-mile barrier island in southern Ocean County, New Jersey. The area regularly suffers damages from coastal storms, hurricanes and nor'easters. The Barnegat Inlet to Little Egg Inlet Coastal Storm Risk Management project, also known as the Long Beach Island beachfill or beach nourishment program, is designed to reduce erosion and property damages associated with these events. It is a joint effort of the Army Corps and the New Jersey Department of Environmental Protection.

A Feasibility Report completed in September of 1999 recommended beachfill with periodic nourishment to reduce potential hurricane and storm damages for the island. The project involves the construction of a dune with a top elevation 22 feet above sea level with a 300-400 foot wide berm, depending on the location of the beach on the island, at an elevation of 8 feet above sea level.

The Long Beach Island Coastal Storm Damage Reduction project was only partially completed when Hurricane Sandy hit the New Jersey shore. The Army Corps completed the initial construction of the project at Surf City in 2006; Harvey Cedars in 2010; and Brant Beach between 31st and 57th Streets in Long Beach Township in 2012. The Army Corps repaired beaches in Surf City and Harvey Cedars in 2012 after Hurricane Irene, and fully restored the beaches within all three communities after Hurricane Sandy in 2013. The restoration and repair work was

funded 100 percent through the Army Corps' Flood Control and Coastal Emergencies program. On December 5, 2014 the U.S. Army Corps of Engineers awarded a contract to the Great Lakes Dredge and Dock Company, for \$128 million to complete initial construction of the Long Beach Island project. This project is a joint effort of the Army Corps and the New Jersey Department of Environmental Protection.



The project includes 22 foot-high dunes and 200 foot-long beaches in Ship Bottom, Beach Haven and parts of Long Beach Township and Surf City, will encompass a total of 12.7 miles of beaches that will measure between 325 and 415 feet long, including dune berms and reconstructing beach entrances to run diagonally from the dune berm to the sand in order to prevent ocean water from funneling into local streets during future storms.

Under the project, the beach berm itself was built up to approximately eight feet above sea level. The dune system behind the beach has a top elevation of approximately 22 feet above sea level.

This project was completed in Ship Bottom in June 2015.

V. Relationship to the Other Regional and State Plans

Ship Bottom's MPAP has been reviewed for consistency and has the following relationship to the New Jersey State Development and Redevelopment Plan, prepared by the New Jersey State Planning Commission and Adopted March 1, 2001:

- Coastal Resource Planning Policy #5 promotes *"well-planned and revitalized coastal communities that sustain economies, are compatible with the natural environment, minimize the risks from natural hazards and provide access to coastal resources for the public use and enjoyment."*

Ship Bottom Borough supports this policy and has initiated a Coastal Vulnerability Assessment Study of its public access points and various critical facilities to ensure community leaders and decision makers have a clear understanding of potential future hazard risk to its access locations and to provide a resource which can be utilized to develop future resiliency projects.

- Coastal Resource Planning Policy #11 seeks to *"promote recreational opportunities and public access, and encourage tourism along the oceanfront, bay front and rivers of the coastal area by protecting public access rights."*

Its estimated that as many as 20,000 people are within the boundaries of Ship Bottom Borough on a given day in the summer months. These people are comprised of year round residents, seasonal residents, day trippers and vacationers and most all seek to enjoy the amenities associated with coastal living. Ship Bottom has established a reputation for hosting various programs focusing on its tidal waters such as a Junior Lifeguard program amongst others.

VI. Resolution of Incorporation

Upon approval of this plan by the New Jersey Department of Environmental Protection, Ship Bottom Borough will approve a final resolution to incorporate this Municipal Public Access Plan into the Recreation/Open Space Element of the Ship Bottom Borough Master Plan. The Final Resolution will mimic the draft Resolution provided in Appendix 2 of this plan.

APPENDIX 1
Municipal Public Access Plans
Required Sections per NJAC 8.11 (e)

1. (e) 1 Statement describing overall **goal of the MPAP** and the **administrative mechanisms** (for example, conservation restrictions, easements, ordinances) that either are already in place, or that shall be put in place to ensure that the municipality will meet public access goals
2. (e) 2 Statement of **Consistency with...Master Plan**
3. (e) 3 Public access **needs assessment** that evaluates:
 - existing access locations and capacities
 - practical limitations (esp. parking and bathrooms)
 - alternatives to address any limitations determined to exist
 - need for additional locations
4. (e) 4 **Digital Map and Inventory** identifying...:
 - tidal waterways within municipality and adjacent lands held by municipality
 - existing and proposed public access ways
 - proposed public access facilities
 - identified facilities compliant with ADA
5. (e) 5 **Implementation strategy**
 - forms of proposed public access responsive to needs assessment (i)
 - comprehensive list of specific public access projects and initiatives with implementation schedule (ii)
 - proposed tools to implement the plan, including (iii)
 - i. adoption or amendment of municipal ordinances
 - ii. uses of monetary compensation (Public Access Fund), if any
 - proposed modifications to existing plans, ordinances & programs to implement MPAP (iv)
 - proposed compliance with ACOE requirements for shore protection projects [see 8.11(r)] (v)
 - cost of implementing, constructing and maintaining the access facilities proposed in the plan and specifies how this cost will be funded (vi)
 - implementation schedule (vii)
 - ordinances in place/to be adopted re signage requirements (viii)
 - measures to permanently protect public access per MPAP (ix)
 - examples/models of easements/restrictions for permanent protections (x)
 - draft resolution incorporating DEP-approved MPAP into a MP element (xi)

APPENDIX 2
Model Resolution for Incorporating MPAP into Master Plan
(upon adoption the final resolution will replace this model)

Resolution #_____

Title: A RESOLUTION APPROVING THE MUNICIPAL PUBLIC ACCESS PLAN

WHEREAS, the *Ship Bottom Borough* Municipal Public Access Plan (MPAP) was submitted to the Municipal Council and reviewed at the regular meeting of {date}, and

WHEREAS, the governing body has approved the plan as submitted, and

WHEREAS, the governing body recognizes the need to make the MPAP an authorized component of municipal decision-making by incorporating it into the municipal master plan,

NOW, THEREFORE, BE IT RESOLVED by the Municipal Council of *the Borough of Ship Bottom*, the "*Ship Bottom Borough* Municipal Public Access Plan," a copy of which is attached, is hereby approved.

FURTHER RESOLVED, the Municipal Public Access Plan shall be incorporated into the municipal master plan within the Recreation/Open Space Element.

FURTHER RESOLVED a copy of the plan shall be sent to the New Jersey Department of Environmental Protection for review and approval in accordance with N.J.A.C.7.7 and 7.7E.

I hereby certify the foregoing to be a resolution adopted by the *Municipal Council of the Borough of Ship Bottom* at a meeting held on {date}.

Municipal Clerk

Appendix 3
Public Access Tables

Part A : Ship Bottom Borough Ocean Access

Part B: Ship Bottom Borough Bay Access

PART A: Borough Of Ship Bottom Ocean Access

ID	Signs	Parking	# of Parking Spaces	Street	Badge Req'd	Swim	Fish	Surf	Playg'd	Park	Pier / Gazebo	Boat Launch	Yacht Club	Marina	Food & Drink Super Market	Rest room	Seats	H/C	Shoreline Type (Ocean, Bay, Beach, Bulkhead)	Access Type (Physical, Visual, Water)	NOTES
1				3rd Street	x	x	x	x									x		Beach	Physical	Vehicle Access Point
2			1 CH	4th Street (Walkover)	x	x	x	x											Beach	Physical	
3				5th Street	x	x	x	x											Beach	Physical	Vehicle Access Point
4				6th Street	x	x	x	x									x		Beach	Physical	
5			1 HC	7th Street	x	x	x	x											Beach	Physical	HC Access
6		x	1 HC	8th Street (Walkover)	x	x	x	x											Beach	Physical	HC Access
7		x	1 HC	9th Street (Walkover)	x	x	x	x											Beach	Physical	HC Access sign at Blvd
8				11th Street	x	x	x	x											Beach	Physical	Vehicle Access Point
9				12th Street	x	x	x	x									x		Beach	Physical	
10				13th Street	x	x	x	x									x		Beach	Physical	
11		x	1 HC	14th Street (Walkover)	x	x	x	x											Beach	Physical	HC Access sign at Blvd
12		x	1, 1 HC	15th Street	x	x	x	x											Beach	Physical	HC Access sign at Blvd & ADA walkover
13				16th Street	x	x	x	x									x		Beach	Physical	
14	x			17th Street	x	x	x	x											Beach	Physical	Vehicle Access Point
15				18th Street	x	x	x	x											Beach	Physical	
16				19th Street	x	x	x	x											Beach	Physical	
17	x		20 & 1 HC	20th Street (Walkover)	x	x	x	x											Beach	Physical	ADA walkover
18		x	1 HC	21st Street (Walkover)	x	x	x	x											Beach	Physical	
19				22nd Street (Walkover)	x	x	x	x											Beach	Physical	
20				23rd Street	x	x	x	x									x		Beach	Physical	
21				24th Street	x	x	x	x											Beach	Physical	
22		x	1 HC	25th Street (Walkover)	x	x	x	x											Beach	Physical	
23				26th Street	x	x	x	x											Beach	Physical	
24				Ship Bottom Avenue	x	x	x	x											Beach	Physical	
25				27th Street	x	x	x	x											Beach	Physical	
26				28th Street	x	x	x	x											Beach	Physical	
27				29th Street	x	x	x	x											Beach	Physical	
28				30th Street	x	x	x	x											Beach	Physical	
29	x			31st Street	x	x	x	x											Beach	Physical	Vehicle Access Point

PART B: Borough Of Ship Bottom Bay Access

ID	Signs	Parking	# of Parking Spaces	Street	Badge Req'd	Swim	Fish	Surf	Playg'd	Park	Pier / Gazebo/ Dock/ Walk	Boat Launch	Yacht Club	Marina	Food & Drink Super Market	Rest room	Seats	H/C	Shoreline Type (Ocean, Bay, Beach, Bulkhead)	Access Type (Physical, Visual, Water)	Notes
1		x	21 & 3 HC	3rd & 4th Street (Rembrance Park)	x		x				W						x	x	Bulkhead	Visual	
2		x	2	5th Street				x			G, W						x	x	Bulkhead	Visual	
3	x			6th Street			x										X		Bulkhead	Visual	
4	x	x	86	9th-12th Streets (Shore Avenue WF Park)	x		x		x	x	All	Boat, Jet Ski, Paddleboard			Vending Machine	x	x	x	Bulkhead	Physical	Sandy Beach not for swimming
5	x	x	67 & 1 HC	13th-16 Streets (Arlington Park & Sunset Pointe)	x	x	x		x	x	G, W	Kayak				x	x	x	Beach/Bkhd	Physical	Bike rack, water fountains, shower
6				17th Street			x										x		Bulkhead	Physical	Kayak launch possible
7				18th Street			x										x		Bulkhead	Visual	Shallow Water
8				19th Street													x		Bulkhead	Visual	
9				20th Street			x				G						x	x	Bulkhead	Visual	Under construction
10				21st Street			x										x		Bulkhead	Visual	
11				22nd Street			x										x		Bulkhead	Visual	
12				23rd Street			x										x		Bulkhead	Visual	
13				24th Street			x												Bulkhead	Visual	
14				25th-26th Streets (Fishing & Crabbing Pier)			x				All						x	x	Bulkhead	Visual	Popular location at Sunset
16				28th Street			x										x		Bulkhead	Visual	
17				Barnegat Avenue - End															Revetment	Visual	

APPENDIX 4

Recreation and Open Space Inventory

County: OCEAN

Municipality: SHIP BOTTOM BORO

Block	Lot	Facility Name	Interest	Type
101	1	BOAT RAMP AREA	FEE	M
101	2	BOAT RAMP AREA	FEE	M
116	2	7TH & OCEAN	FEE	M
12	1	PAVILLION, DOCK & BATHING	FEE	M
120	18	WATERFRONT PARK	FEE	M
120	22	WATERFRONT PARK	FEE	M
120	23	WATERFRONT PARK	FEE	M
123	4	BAYFRONT	FEE	M
124	2	5TH & BAYFRONT	FEE	M
125	16	4TH ST PARK	FEE	M
125	17	3RD TO LAGOON	FEE	M
125	18	3RD TO LAGOON	FEE	M
126	12	PLAYGROUND	FEE	M
136	13	PARK	FEE	M
136	14	4TH ST	FEE	M
136	15	4TH ST	FEE	M
17	1	31ST & OCEAN	FEE	M
29	1	24TH & 25TH & OCEAN	FEE	M
30	1	23TH & 24TH & OCEAN	FEE	M
37	1	22TH & 23TH & OCEAN	FEE	M
45	1	BEACH & DUNE ACQ.	FEE	M
45	2	BEACH & DUNE ACQ.	FEE	M
56	2	BEACH & DUNE ACQ.	FEE	M
57	2	114 E17TH ST	FEE	M
57	3	114 E17TH ST	FEE	M
67	1	15TH & 16TH & OCEAN	FEE	M
71	1	PAVILLION, DOCK & BATHING	FEE	M
72	1	PAVILLION, DOCK & BATHING	FEE	M
72	2	BAYFRONT	FEE	M
76	1	14TH & 15TH & OCEAN	FEE	M
77	1	14TH & OCEAN	FEE	M
77	2	14TH & OCEAN	FEE	M
81	1	PAVILLION, DOCK & BATHING	FEE	M
82	1	PAVILLION, DOCK & BATHING	FEE	M
82	2	PAVILLION, DOCK & BATHING	FEE	M
86.01	1	12TH & 13TH & OCEAN	FEE	M
87.01	1.01	BEACH & DUNE ACQ.	FEE	M
91	1	BOAT RAMP AREA	FEE	M
91.01	1	BOAT RAMP AREA	FEE	M
92	1	BOAT RAMP AREA	FEE	M

APPENDIX 5
Sign Ordinance

The Borough of Ship Bottom does not have an Ordinance that regulates signage on property adjacent to tidal waters, however, as evident in the examples of signage provided within this document, the Borough effectively advertises public access at designated locations.