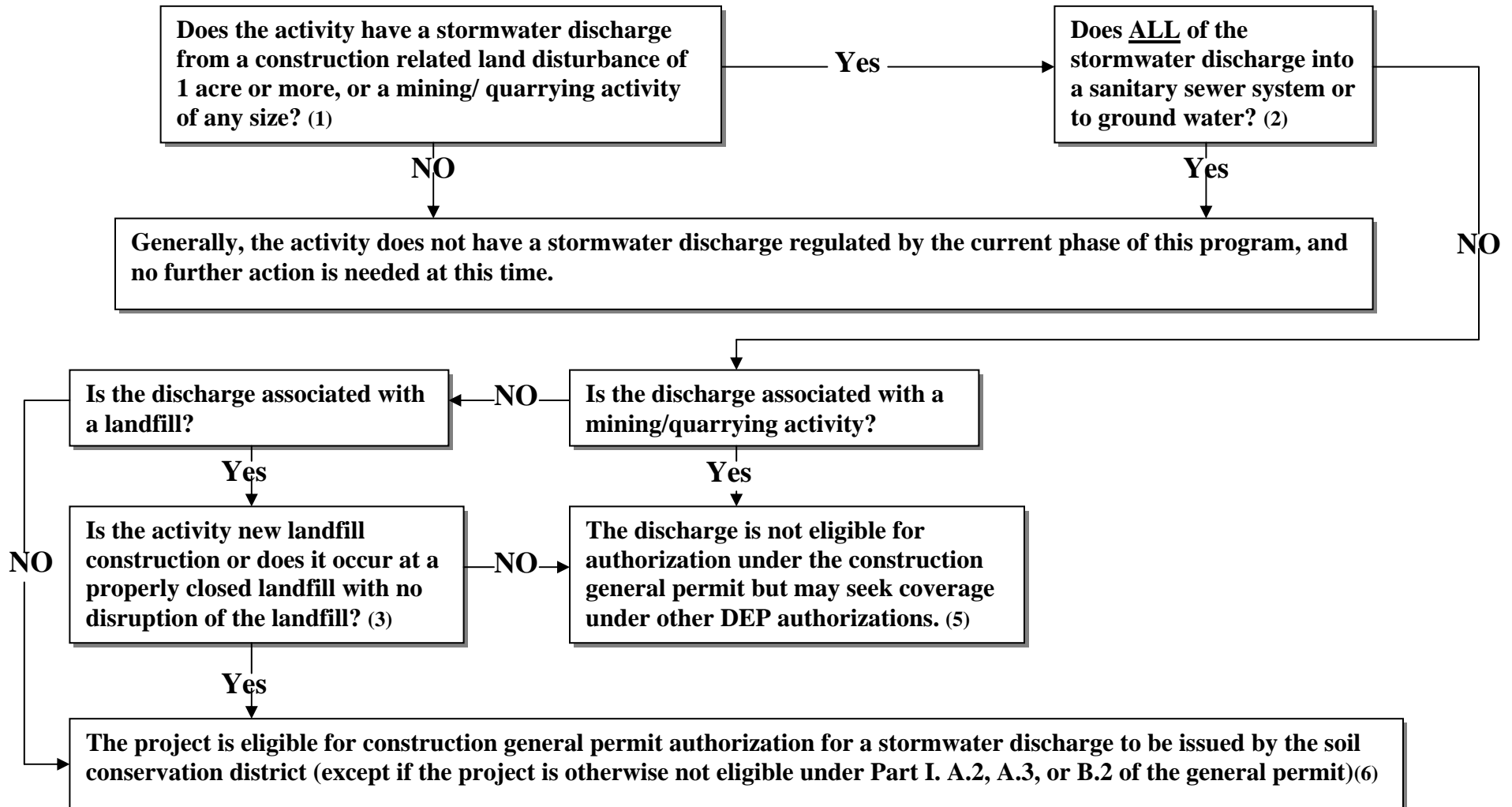




NJ DEPARTMENT OF ENVIRONMENTAL PROTECTION
NJ DEPARTMENT OF AGRICULTURE
Stormwater Discharge Permit Program
Construction General Permit NJG0088323
Self – Screening Form



This informal guidance may be used to assess the applicability of the Construction General Permit to stormwater discharges from construction activities. For additional information, please refer to the General Permit or contact the Soil Conservation District for your area.



**New Jersey Pollutant Discharge Elimination System
STORMWATER DISCHARGE PERMIT PROGRAM**

CONSTRUCTION GENERAL PERMIT NJG0088323

SELF-SCREENING FORM NOTES

1. Stormwater discharges means for the purposes of this screening form, stormwater runoff, from a construction project. Eligibility for authorization under the Construction General Permit is limited to **Construction activities** including clearing, grading, and excavation activities associated with construction. Construction activities disturbing one or more acres of land or less than one acre of total land area which is part of a larger common plan of development or sale must secure stormwater discharge authorization.

2. This program only addresses stormwater discharges to surface waters (DSW), which includes discharges to storm sewers (or other stormwater flow paths) that discharge to surface waters a distance from the site. If all of the stormwater from your facility is discharged to a sanitary or combined sewer or to ground water, it is not regulated under this program. (A “combined sewer” is a sewer designed to convey both stormwater and sanitary sewage to a sewage treatment facility.) A verification from the appropriate municipal sewer or public works department, sewerage agency, or municipal engineer (or other supporting documentation) that the discharge is to a combined sewer must be obtained.

If all or part of the stormwater is discharged to ground water, it may require a NJPDES Discharge to Ground Water (DGW) permit. Discharges to ground water occur if any of the following stormwater devices are used: permeable detention or retention basins, dry wells, seepage pits, leaching fields, underground trenches or drains, infiltration/percolation basins or lagoons. If there is a discharge to ground water of stormwater which has been exposed to industrial source materials or industrial activity, or if the discharge to ground water of stormwater is combined with any other industrial discharge, process wastewater discharge, or non-stormwater discharges, you should contact the Bureau of Nonpoint Pollution Control ground water staff at (609) 292-0407 for further assistance regarding the need to apply for a DGW permit. If you have a DGW permit that incorporates the stormwater discharge, no action is required at this time.

3. The Construction General Permit may authorize stormwater discharges during new landfill construction (before any solid or hazardous waste is received) and for landfills which have been closed in compliance with State solid or hazardous waste rules and where land disturbances associated with construction activity is occurring without disrupting the landfill and exposing landfilled material. For other construction or mining activities at landfills, an individual NJPDES permit must be obtained instead directly from the DEP.

4. All stormwater discharges from mining/quarrying activities are ineligible for the Construction General Permit. The Construction General Permit is no longer available for facilities that mine or quarry ore, gravel, stone, sand, soil, shale, or clay (such mining or quarrying may involve crushing, washing and other processing). Facilities engaged in these activities must instead obtain an individual or Mining and Quarrying general NJPDES permit. Please contact the Bureau of Nonpoint Pollution Control at (609) 633-7021 for more detailed information.

5. If your project is not eligible for authorization under the Construction General Permit, you need to apply directly to the DEP for authorization under an individual NJPDES permit. Please contact the Bureau of Nonpoint Pollution Control at (609) 633-7021 for more detailed information.

6. Certain other stormwater discharges, such as those subject to USEPA effluent guideline limitations for stormwater, and those from activities that are not regulated under Chapter 251, are also ineligible for the Construction General Permit (see Part I.A.2,A.3 and B.2 of that permit for further information). There are USEPA effluent guideline limitations for stormwater from the following categories: cement manufacturing, materials storage piles (40 CFR 411, Subpart C); feedlots (40 CFR 412); fertilizer manufacturing (40 CFR 418); petroleum refining (40 CFR 419); phosphate manufacturing (40 CFR 422); steam electric, coal pile runoff (40 CFR 423); mineral mining and processing (40 CFR 436); ore mining and dressing (40 CFR 440); asphalt emulsion (40 CFR 443 Subpart A); and landfills (40 CFR 445).