

# New Jersey's State Fish Hatcheries Production Reports

## 2002 Pequest Trout Hatchery Production



Pequest Trout Hatchery staff feeding trout, an event that takes place a minimum of four times per day. Photo: NJ Division of Fish and Wildlife

The year 2001–2002 was another exceptional production cycle for trout at the Pequest State Trout Hatchery. A total of 738,179 brook, brown, and rainbow trout were distributed throughout the state during the spring, fall, and winter stocking seasons. Since 1984 the Pequest rearing facility has exceeded its production goals for producing and stocking quality trout in the waters of New Jersey. The following are production numbers and sizes of trout for 2002.

By Jeff Matthews, Superintendent

### 2002 Spring Trout Stocking Summary

Total Fish 610,314                      Total Pounds 288,662

**Production**

<b>Rainbow</b>	242,170 Fish
	104,919 Pounds
	10.7"
<b>Brown</b>	125,760 Fish
	61,050 Pounds
	10.5"
<b>Brook</b>	234,795 Fish
	107,534 Pounds
	10.6"

**Brood Stock**

<b>Rainbow</b>	3,154 Fish
	4,953 Pounds
	16.2"
<b>Brown</b>	2,280 Fish
	6,774 Pounds
	18.1"
<b>Brook</b>	2,155 Fish
	3,432 Pounds
	15.3"

### 2001–2002 Fall–Winter Trout Distribution

	# Fish	Pounds	Size
Rainbow Trout Production	56,630	17,724	9.6"
Brook Trout Broodstock	945	3,561	18.2"
Rainbow Trout Surplus	10,900	850	6.0"
Brown Trout Surplus	3,300	230	5.5"
Brook Trout Surplus	13,900	1,246	6.1"

### Sea Run Brown Trout Program

Sea Run Brown Trout (Manasquan River)	29,250	6,500	8.5"
---------------------------------------	--------	-------	------

### 2001–2002 Winter Trout Stocking Program

Rainbow Trout Production	12,940	5,839	10.7"
--------------------------	--------	-------	-------

## Hackettstown State Fish Hatchery



Ed Washuta and Ed Conley stripping eggs from a 48" female muskellunge trap netted from Greenwood Lake.

Photo: NJ Division of Fish and Wildlife

The fall of 2002 marks the end of the third year of production at the recently modernized fish culture facility in Hackettstown. The Hackettstown Hatchery once again stocked over 2 million fish, totaling over 20,000 pounds of fish, into New Jersey's public waters. The hatchery combines a mixture of intensive tank culture and extensive pond culture to produce 17 different species of fish.

New Jersey's anglers continue to reap the rewards of this updated facility. Many anglers travel to far off locations in the U.S. and Canada hoping to catch trophy fish. Today these same anglers stand a good chance of landing one of these fish in their own backyard. Muskies over 50 inches, tiger muskies and northern pike over 20 pounds and walleyes over 10 pounds are being caught right here in the Garden State. Species such as the hybrid striped bass, largemouth and smallmouth bass and channel catfish also continue to flourish.

Continuing upgrades to the water supply system and to the extensive pond portion of the hatchery will help to increase the production at the facility. With the help of the Division's Bureau of Land Management and the state and county Mosquito Control Commissions, the hatchery has reconstructed over 20 of its 50 earthen ponds. This continued effort will help insure the continued increase in production at the facility.

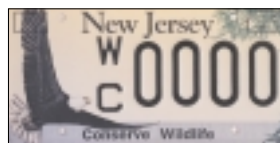
For more information about the hatchery and the warm and coolwater species produced here, visit our website at [www.njfishandwildlife.com](http://www.njfishandwildlife.com) or send a self-addressed stamped envelope to: Warmwater/Coolwater Stocking List, Pequest Trout Hatchery and Natural Resource Education Center, 605 Pequest Road, Oxford, NJ 07863.

(continued on page 29)

By Craig Lemon, Hatchery Supervisor

### CONSERVE WILDLIFE LICENSE PLATES

#### Support Endangered and Nongame Species



Since 1972 the Endangered and Nongame Species Program (ENSP) works to protect and restore New Jersey's endangered and threatened wildlife. You can help the program through the Income Tax Check-off

and/or through the Conserve Wildlife license plate. These attractive \$50 license plates let everyone know you believe in conservation, and 80% of your tax deductible payment goes directly to the ENSP. Personalized Wildlife Plates are also available for \$100. Previously available by mail only, motorist may now purchase the plates in person at DMV offices regardless of their current expiration date. Plates can also be purchased from car dealers when buying or leasing a new car.

**HACKETTSTOWN STATE FISH HATCHERY**

Summation of All Species Distributed from the Hackettstown State Fish Hatchery in 2002

Species	Number	Average Length (inches)	Range (inches)
Bluegill Sunfish			
Fingerlings	3,000	2.0	1.5-2.5
Adults	18,460	6.0	4.6-9.0
Channel Catfish			
Fingerlings	125,552	2.0	1.7-2.3
Adv. Fingerlings*	41,900	7.0	6.0-8.0
Yearlings	4,015	16.	11.0-18.0
Adults*	125	20.	15-28
Fathead Minnows	54,000	1.0	.5-1.5
Black Crappie	1,200	3.5	3.3-4.0
Lake Trout*	3,260	7.6	5.5-9.2
Largemouth Bass			
Fingerlings	6,140	2.2	1.4-3.2
Adults	120	10.0	8.0-14.0
Mosquitofish*	455,550	1.0	.5-1.8
Muskellunge*	4,400	9.0	7.5-12
Smallmouth Bass	12,774	2.4	1.5-3.2
Tiger Muskellunge			
Fingerlings	17,600	1.2	1.0-1.5
Adv. Fingerlings*	14,000	10	8.8-11.2
Walleye			
Fry	730,800	—	—
Fingerlings	303,170	1.86	1.6-2.2
Adv. Fingerlings*	22,000	4.3	3.3-6.9
Northern Pike			
Fry	100,000	—	—
Fingerlings	39,900	3.34	2.6-3.8
Adv. Fingerlings	32,580	6.6	5.4-8.2
Brown Bullhead	200	10	9.0-12.0
Hybrid Striped Bass	39,915	4.0	3.5-4.6
Striped Bass	405	14.4	12.4-15.8
<b>TOTAL</b>	<b>2,031,066</b>		

\* Estimated numbers: these fish were not yet released at press time.



5 million walleye eggs from Swartswood Lake incubating in hatching jars.

Photo: NJ Division of Fish and Wildlife



Craig Lemon and Ed Conley stripping eggs from two female walleyes trap netted from Swartswood Lake.

Photo: NJ Division of Fish and Wildlife

**To Subscribe Call  
New Jersey Outdoors  
at 1-800-645-0038**

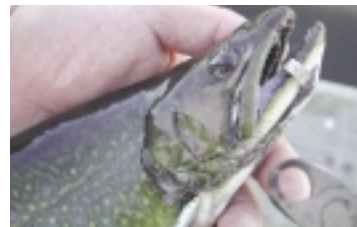
New Jersey's Natural and Historic Resources and Outdoor Recreation Magazine

Mention this ad and pay only \$13.50 for a new one-year subscription.

**That's 20% off the cover price!**



Only \$13.50



**Hook A Winner Program**

Once again this year, the Division of Fish and Wildlife will be jaw tagging more than 1,000 brook trout for release in New Jersey waters. If you are a lucky angler who lands one of these fish, send your name, address, fish tag number and location of catch to the Pequest Trout Hatchery, 605 Pequest Road, Oxford, NJ 07863, Attn: Hook a Winner Program. In recognition of your catch you will be mailed a certificate and award patch. In addition, your name will be forwarded to the New Jersey State Council of Trout Unlimited and entered into their drawing for one of 12 rod and reel combinations to be held during the celebration of National Fishing Week, June 1-8, 2003.

# New Jersey's Freshwater Fish



Brook Trout



Brown Trout



Lake Trout



Rainbow Trout



Northern Pike



Chain Pickerel



Muskellunge



Redfin Pickerel



Yellow Perch



White Perch



Walleye



Hybrid Striped Bass



Striped Bass



American Shad



Alewife Herring



Blueback Herring

# New Jersey's Freshwater Fish



Largemouth Bass



Smallmouth Bass



Redbreast Sunfish



Pumpkinseed Sunfish



Bluegill



Black Crappie



White Crappie



Channel Catfish



White Catfish



Brown Bullhead



Carp



White Sucker



Fallfish