



BAY ANCHOVY

Anchoa mitchilli

Description:

- ◆ silvery forage fish
- ◆ short head and snout with long jaw
- ◆ single dorsal fin above or just before anal fin
- ◆ faint silvery stripe down sides of fish

Size:

- ◆ up to 4 inches

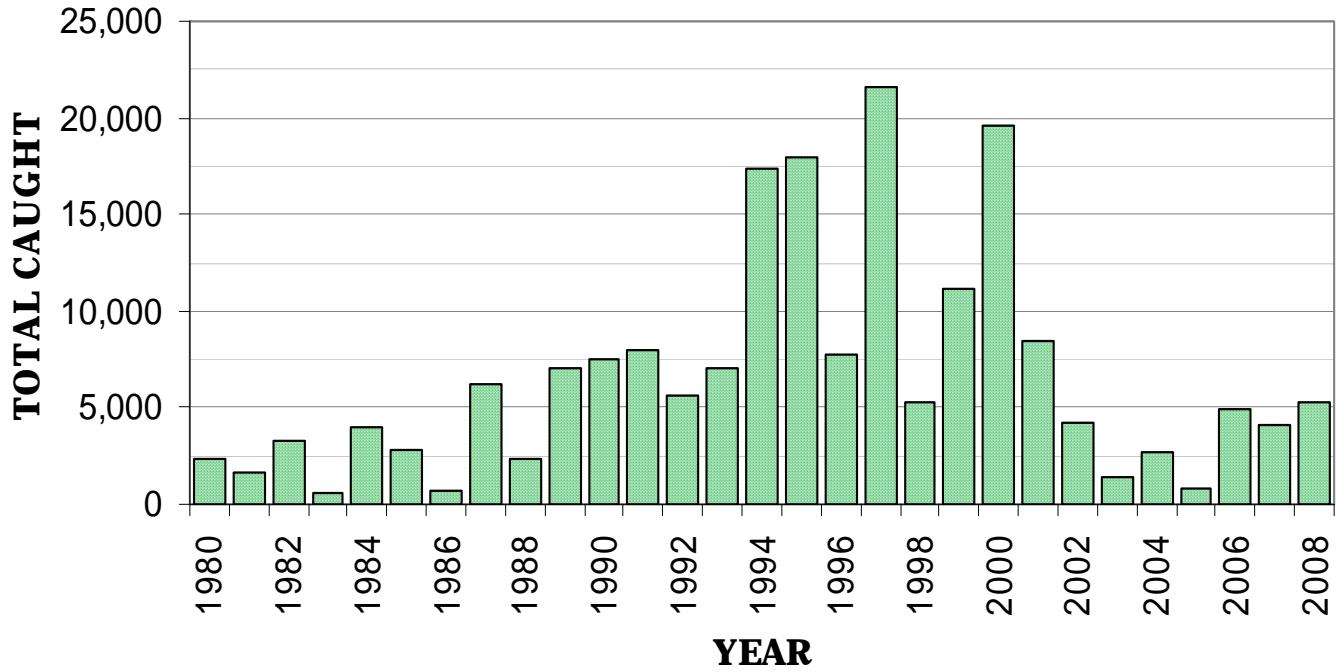
Range:

- ◆ Gulf of Maine to Florida
- ◆ Gulf of Mexico to Yucatan

Facts:

- ◆ spawn in late spring and summer
- ◆ prefer shallow waters in bays and estuaries
- ◆ live up to 3 years
- ◆ tolerant of wide ranges of temperature and salinity

BAY ANCHOVY CATCH TOTALS BY YEAR



NJ Department of Environmental Protection
Division of Fish and Wildlife
Bureau of Marine Fisheries
www.NJFishandWildlife.com