



BLUEFISH

Pomatomus saltatrix

Description:

- ◇ green/blue back
- ◇ silvery white sides
- ◇ dark blotch at base of pectoral fins
- ◇ large mouth lined with razor sharp teeth
- ◇ 2 dorsal fins; 1 spinous fin separated from longer, soft fin

Size:

- ◇ up to 45 inches and 27 lbs

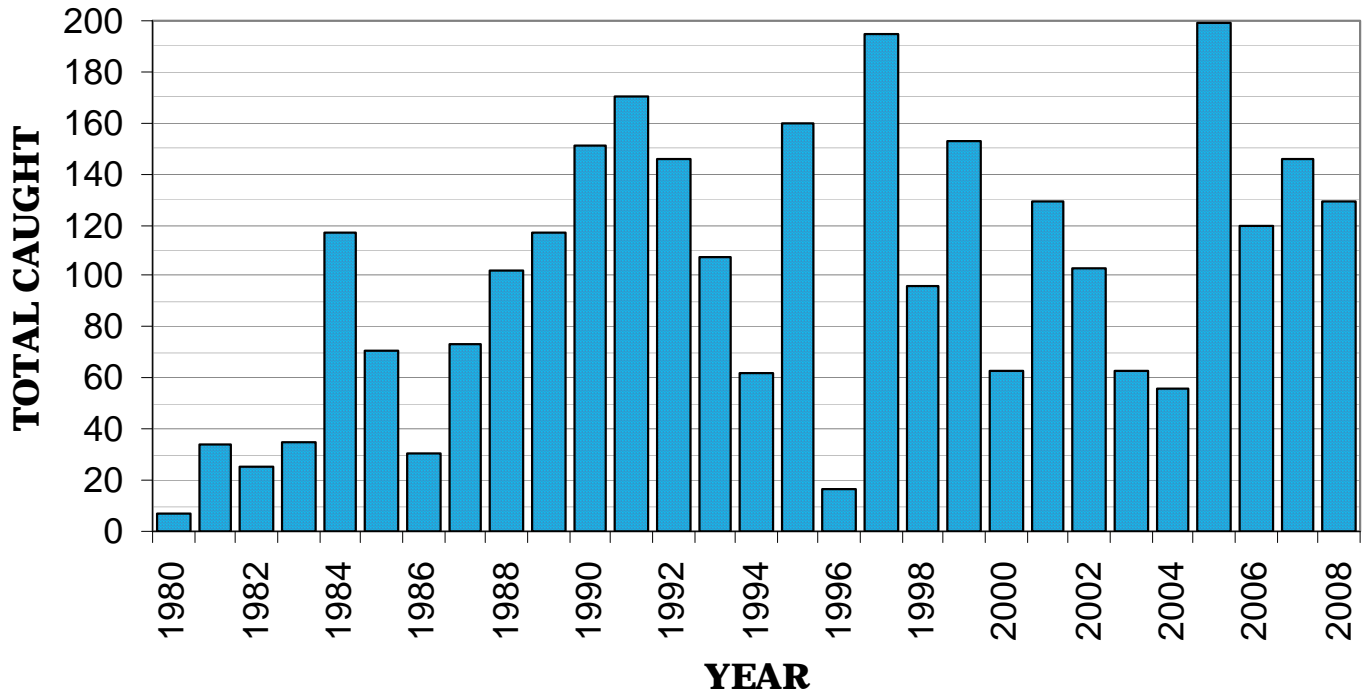
Range:

- ◇ all oceanic and coastal waters with the exception of the eastern and northwest Pacific

Facts:

- ◇ may also live in estuaries and brackish waters
- ◇ young live year round in bays and estuaries
- ◇ annual migrations lengthen with maturity
- ◇ females release between 0.6 -1.4 million eggs in total while migrating along the coasts
- ◇ after being fertilized, eggs hatch within 48 hours
- ◇ voracious, visual feeders that will attack anything shiny, including jewelry
- ◇ known to chase bait fish out of water onto sandy beaches

BLUEFISH CATCH TOTALS BY YEAR



NJ Department of Environmental Protection
Division of Fish and Wildlife
Bureau of Marine Fisheries
www.NJFishandWildlife.com