

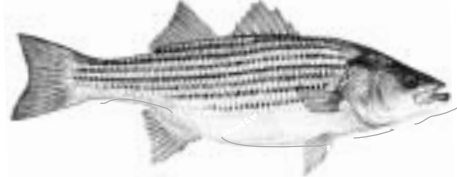
# ATTENTION ANGLERS

## 2008 NJ Recreational Minimum Size, Possession Limits & Seasons

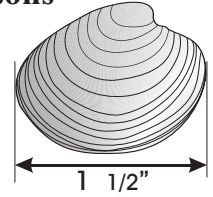
Fish are measured from tip of snout to tip of tail (*except Black Sea Bass*).  
 Cleaning or filleting of fish with a minimum size limit while at sea is prohibited.



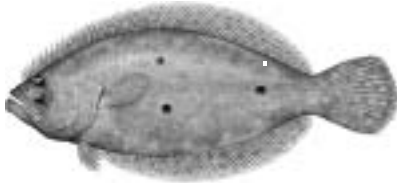
**Weakfish**  
6 fish at 13 inches



**Striped Bass or Hybrid Striped Bass**  
2 fish at 28" or greater



**Hard Clam**  
recreational limit - 150 clams  
No harvest on Sunday  
License required



**Summer Flounder (Fluke)**  
8 Fish at 18 inches  
Open Season: May 24 - Sept. 7

Del. River & tribs. (Calhoun St. Bridge); Trenton, to Salem River & tribs.  
 Open Mar.1 - Mar. 31 & June 1 - Dec. 31  
 Atlantic Ocean (0-3 miles from shore), no closed season  
 (Greater than 3 miles from shore), closed  
 All other marine waters, open Mar. 1 - Dec. 31

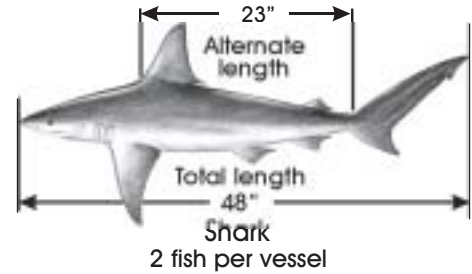


**Winter Flounder**  
10 fish at 12 inches  
Open Season: March 23 - May 21

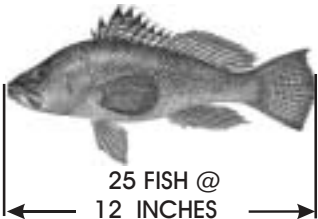


**Tautog 14 inches**  
Open seasons:  
4 fish Jan. 1 - Apr. 30  
1 fish July 16 - Nov. 15  
6 fish Nov. 16 - Dec. 31

**PROHIBITED SPECIES**  
*It is illegal to take, possess or land any of the following species:*  
**BIGEYE SAND TIGER SHARK**  
**SHORTNOSE STURGEON**  
**ATLANTIC STURGEON**  
**SAND TIGER SHARK**  
**BASKING SHARK**  
**WHALE SHARK**  
**WHITE SHARK**



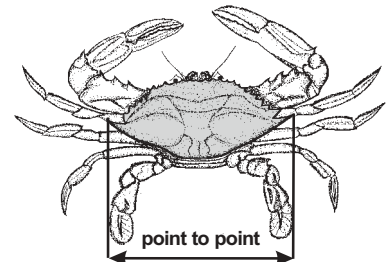
**Shark**  
2 fish per vessel



**Black Sea Bass**  
25 FISH @ 12 INCHES  
Open season: Jan 1- Dec. 31

OTHER SPECIES	POSSESSION LIMIT	TOTAL LENGTH
AMERICAN EEL	50	6"
BLACK DRUM	3	16"
COBIA	2	37"
COD	NO LIMIT	21"
HADDOCK	NO LIMIT	21"
KING MACKEREL	3	23"
POLLOCK	NO LIMIT	19"
RED DRUM	1	18"- 27"
SCUP (PORGY)	50	9" (Jan.1-Feb.28 July 1-Dec.31)
SHAD	6	NO LIMIT
SPANISH MACKEREL	10	14"
LOBSTER	6	3 3/8" - 5 1/4"

(Carapace length)



**Blue Crab**  
 peeler or shedder - 3 inches  
 soft - 3 1/2 inches  
 hard - 4 1/2 inches  
 recreational limit - one bushel  
 Crab pot/Trot line Seasons:  
 Delaware Bay & tributaries  
 April 6 - Dec. 4  
 All other waters  
 March 15 - Nov. 30



**Bluefish**  
15 fish no minimum size  
Open season: Jan 1 - Dec 31



New Jersey Department of Environmental Protection  
 Division of Fish and Wildlife  
[www.njfishandwildlife.com](http://www.njfishandwildlife.com)

