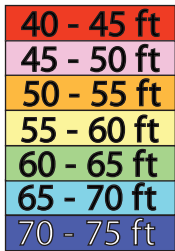


Cape May Reef

DGPS



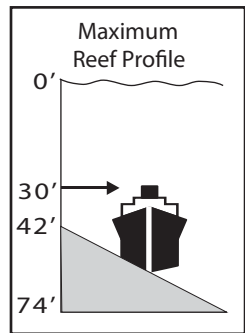
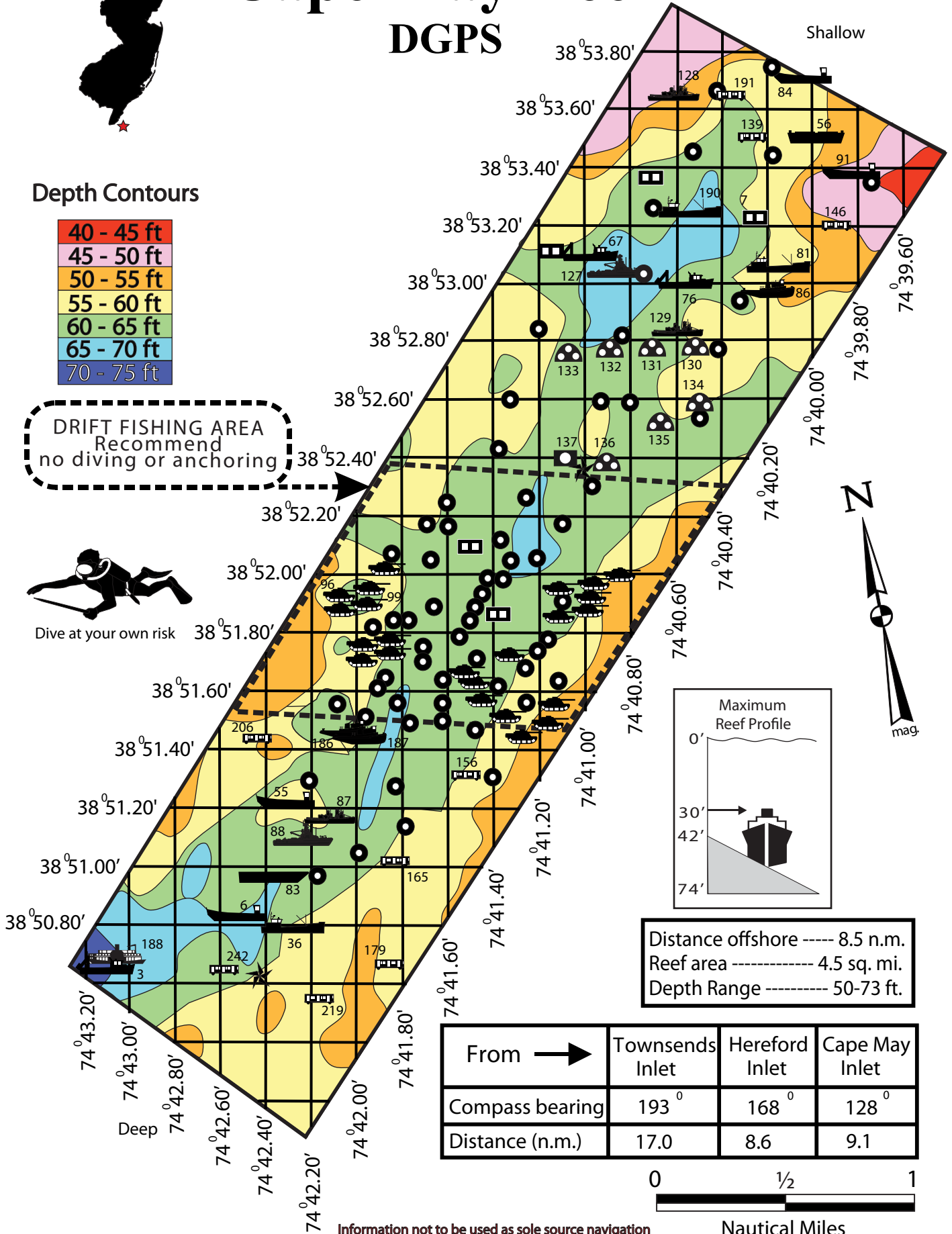
Depth Contours



DRIFT FISHING AREA
 Recommend
 no diving or anchoring

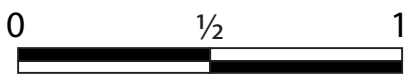


Dive at your own risk



Distance offshore ----- 8.5 n.m.
 Reef area ----- 4.5 sq. mi.
 Depth Range ----- 50-73 ft.

From →	Townsend's Inlet	Hereford Inlet	Cape May Inlet
Compass bearing	193°	168°	128°
Distance (n.m.)	17.0	8.6	9.1



Information not to be used as sole source navigation

Nautical Miles

CAPE MAY REEF COORDINATES

ID - YEAR SUNK, NAME, STRUCTURE	DGPS	SPONSORS
3-86, Laita, 106' Clam Dredge	3850.680 7442.965	Eirek's Dock, The Fisherman Magazine
6-87, Peggy Diana, 56' Landing Craft	3850.830 7442.510	949th Army Transportation Corps
7-88, Ben Franklin Bridge, 4700 Concrete Slabs	3853.230 7440.252	Delaware River Port Authority
36-89, Winthrop, 120' Trawler	3850.825 7442.312	Eirek's Dock, Fish America Foundation
55-90, Captain Henry, 56' Landing Craft	3851.200 7442.280	Bureau of Coastal Engineering, Cape May Party & Charter Boat Assoc., Fish America Foundation
56-90, Lisa Michelle, 110' Deck Barge	3853.505 7440.075	McNeil's Marina, Fish America Foundation, Cape May Party & Charter Boat Association
67-91, Becky Lee, 85' Clam Dredge	3853.110 7441.030	Atlantic Cape Fisheries, Cape May Party & Charter Boat Association
76-91, Wyoming, 100, Clam Dredge	3852.976 7440.620	Wyoming Boat Corp., Cape May Party & Charter Boat Association, Fish America Foundation
81-92, Sea Transporter, 135' Clam Dredge	3853.118 7440.190	Atlantic Cape Fisheries, Cape May Party & Charter Boat Association, Artificial Reef Association
83-93, Salt Barge, 150' Deck Barge & 228 Tire Units	3850.959 7442.385	U.S. Navy, Cape May Party & Charter Boat Association, Artificial Reef Assoc., N.J. Dive Council, Carbon Service
84-93, Onandaga, 205' Tanker	3853.770 7439.975	Carbon Service, Philadelphia Navy Yard, Sportfish Fund, Artificial Reef Association, Cape May Party & Charter Boat Association
86-93, Celia Brown, 85' Tug	3852.950 7440.200	Sportfish Fund, Artificial Reef Association, Cape May Party & Charter Boat Association
87-93, Cape Strait, 95' Coast Guard Cutter	3851.060 7442.125	U.S. Coast Guard, N.J. State Police
91-97, Rothenbach Reef I, 165' Tanker Barge	3853.368 7439.800	Rothenbach Family, Cape May Party & Charter Boat Association
96-98, George B. Shuda Reef, Tank	3851.893 7442.024	Family and Friends, N.J. Army National Guard

Continued on next page

CAPE MAY REEF COORDINATES (continued)

ID - YEAR SUNK, NAME, STRUCTURE	DGPS	SPONSORS
99-98, Roy C. Titus Memorial Reef, 2 Tanks	3851.888 7442.013	Family and Friends
127-99, Red Oak, 157' Buoy Tender	3853.125 7440.816	South Jersey Fishing Center, U.S. Coast Guard
128-00, Point Swift, 83' Coast Guard Cutter	3853.62 7440.60	Cape May Party and Charter Boat Association
129-01, Dr. Tom's Reef, 120' Coast Guard Cutter	3852.81 7440.59	Natoli Family
130-02, Dr Tom's Reef, Reef Balls	3852.80 7440.52	Family and Friends
131-02, Archie Faulkner Sr. Reef, Reef Balls	3852.78 7440.70	Pauline Faulkner and Family
132-02, Prowler Reef, Reef Balls	3852.77 7440.90	Nontas Kontes
133-02, John "Wild Bill" Beatty Reef, Reef Balls	3852.75 7441.08	Robert Beatty, Family and Friends
134-02, Lorraine Messner Reef, Reef Balls	3852.57 7440.50	James Messner, Jr.
135-02, Capt. James Albright Reef, Reef Balls	3852.55 7440.66	Don and Marge Albright
136-02, Hillman's Reef, Reef Balls	3852.38 7440.90	H.M. Hilman Brass Co.
137-02, Bruce H. Brong Reef, Concrete Castings	3852.40 7441.08	Family and Friends
139-03, Redbird Reef I, Subway Cars	3853.56 7440.27	New York City Transit Authority
146-03, Redbird Reef II, Subway Cars	3853.20 7439.89	New York City Transit Authority
156-03, Redbird Reef III, Subway Cars	3851.32 7441.51	New York City Transit Authority
165-03, Redbird Reef IV, Subway Cars	3851.02 7441.82	New York City Transit Authority
179-09, Redbird Reef V, Subway Cars	3850.65 7441.84	New York City Transit Authority
186-04, Allan R., 110' Tug	3851.475 7442.029	Ann E. Clark Foundation
187-04, Guido's Tug 110' Tug	3851.456 7442.016	South Jersey Fishing Center
188-05, Elizabeth, 194' Ferry	3850.682 7443.080	Commissioner's Coastal Initiative

Continued on next page

CAPE MAY REEF COORDINATES (continued)**ID - YEAR SUNK,
NAME, STRUCTURE****DGPS****SPONSORS**

190-08, Miss Beth, 80' Trawler	3853.237 7440.545	Atlantic Cape Fisheries
191-08, Stainless Steel Subway, 15 Subway Cars	3853.648 7440.368	New York City Transit Authority
206-08, Stainless Steel Subway, 13 Subway Cars	3851.436 7442.418	New York City Transit Authority
206-08, Stainless Steel Subway, 23 Subway Cars	3850.557 7442.167	New York City Transit Authority
206-08, Stainless Steel Subway, 21 Subway Cars	3850.647 7442.598	New York City Transit Authority
219-08, Stainless Steel Subway, 23 Subway Cars	3850.607 7442.177	New York City Transit Authority
242-08, Stainless Steel Subway, 21 Subway Cars	3850.648 7442.500	New York City Transit Authority

FACT: Cape May Reef encompasses an area of 4.5 square miles and is the largest reef site in the New Jersey artificial reef network.

The Miss Beth, an 80' commercial fishing boat was the 22nd boat to be sunk on the Cape May Reef site.

**Tautog ~ *Tautoga onitis***

Tautog is a stout, heavy fish with thick rubbery lips, strong jaws and hardy teeth used to crush muscles, barnacles, small crabs and other bottom crustaceans.

They have an average weight of one to three pounds with a maximum length of three feet. Tautogs are dark gray to olive brown and have a speckled or blotched color pattern that extends into their spiny dorsal fin. They can be tricky to catch due to their tendency to dart back into the wreck or other structure after taking the bait. A bottom rig baited with clam, sand fleas or green crabs is often used to catch tautog.