



NJ Invasive Species Strike Team

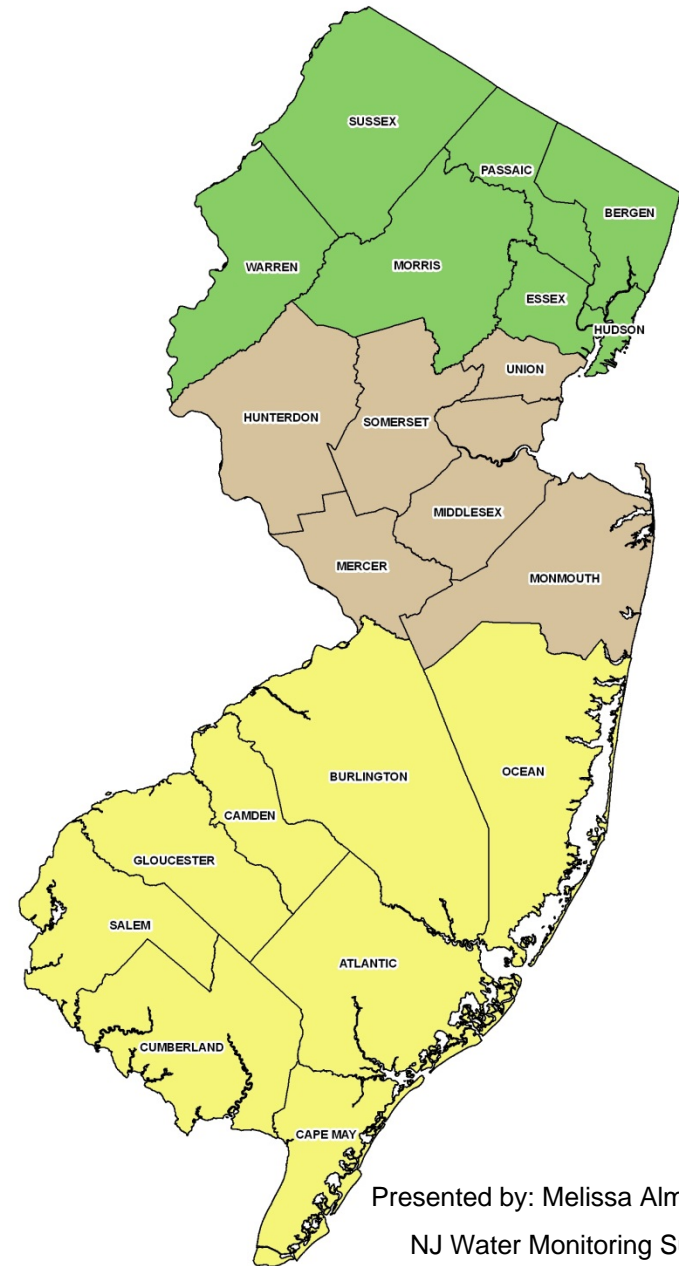
Mission: prevent the spread of emerging invasive species across the state of NJ

Methodology:

- Survey (Early Detection)
- Eradication (Rapid Response)
- Outreach & Education

- NJ's first Cooperative Invasive Species Management Area (CISMA)
 - Formed in 2008 as "Central Jersey Invasive Species Strike Team"

• www.njisst.org



Presented by: Melissa Almendinger
NJ Water Monitoring Summit
December 1, 2011

Early detection and rapid response (ED/RR) are key to preventing the spread of invasive species

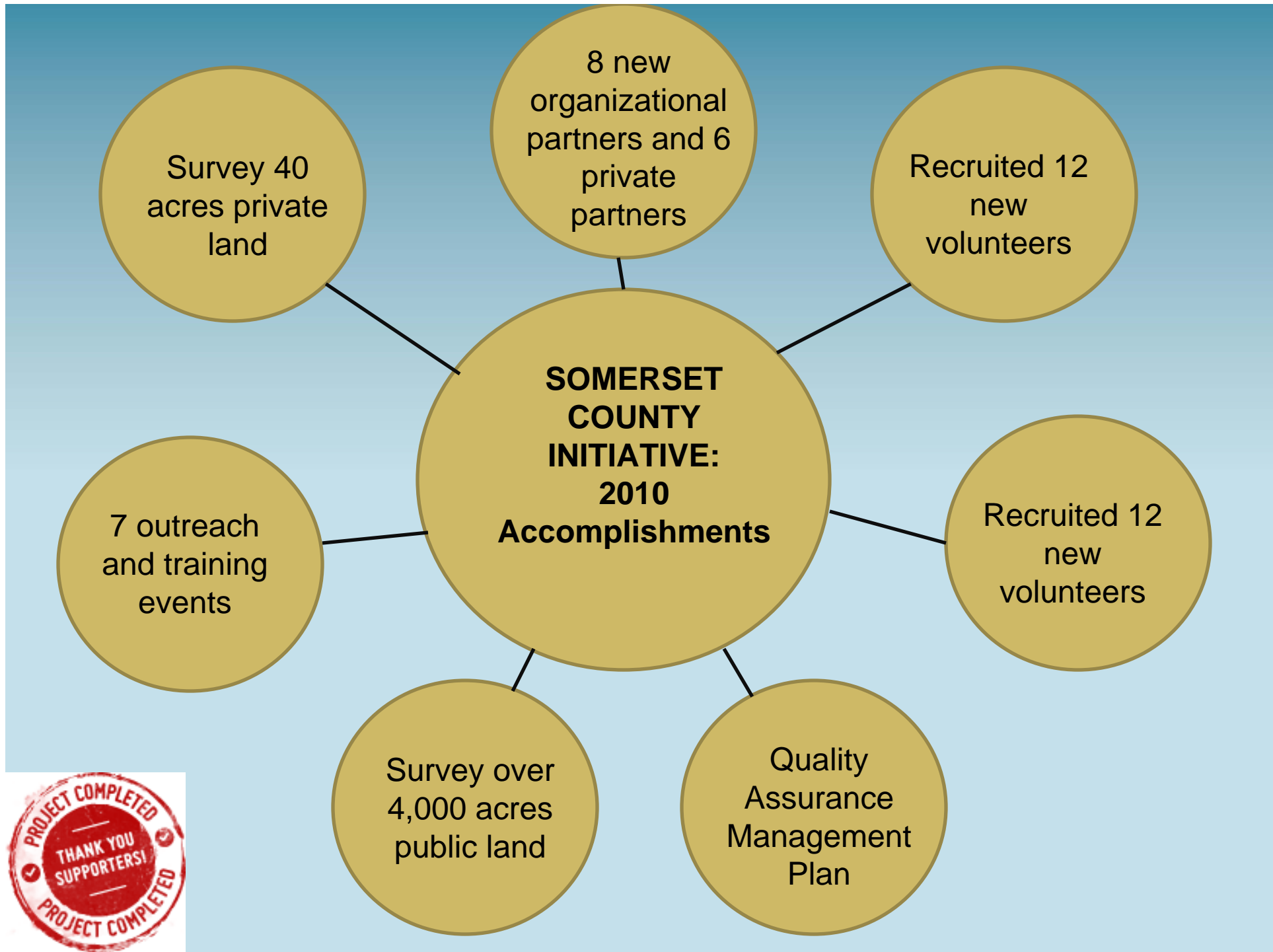


NJISST- Somerset County Initiative
Funded by: The Watershed Institute



- ❖ Searching open space- public and private
- ❖ Eradicating invasive plant populations
 - ❖ Recruiting & training volunteers
 - ❖ Engaging public land managers
 - ❖ Engaging private landowners
 - ❖ Public outreach

www.njisst.org



Field Survey and Control Prioritization Protocols Quality Assurance Management Plan

Analysis & Review of Organizational Components including:

- Training Requirements/Certification
 - Documentation and Records
 - Target Species Selection
 - Searching Methodology
 - Eradication Methodology
 - Data Submission



1



2



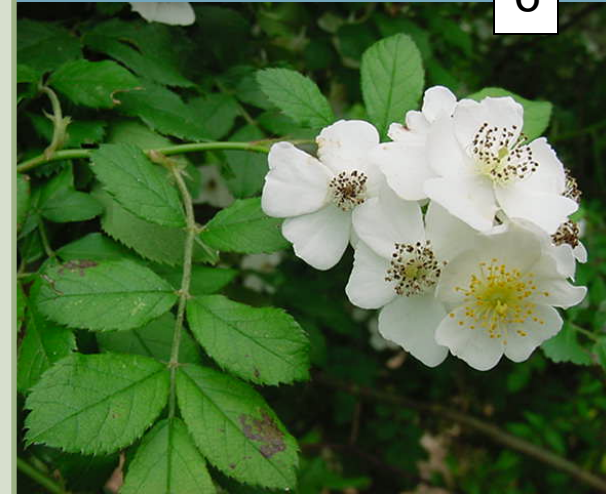
3



4



6



5



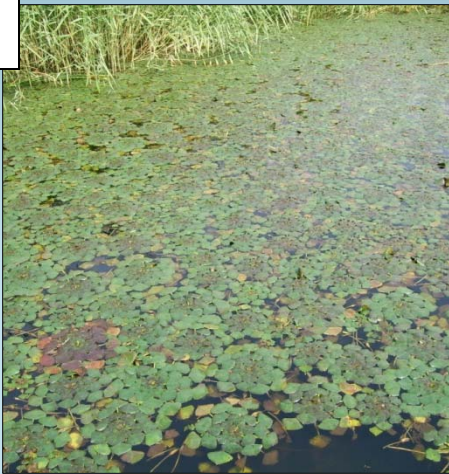
6 WIDESPREAD Invasive Plants

1. Garlic mustard
2. Japanese knotweed
3. Japanese barberry
4. Japanese stiltgrass
5. Lesser celandine
6. Multiflora rose

1



2



3



4



5



6



6 Highly Threatening EMERGING Invasive Plants

1. Oriental photinia
2. Water chestnut
3. Common buckthorn
4. Siebold's viburnum
5. Japanese aralia
6. Linden viburnum

1



2



3



6 EMERGING Landscape
 Invasive Plants

1. Butterfly bush
2. Japanese/Chinese wisteria
3. Yellow iris
4. Callery pear
5. English ivy
6. Chinese silver grass

6



4




5





Website Resources

www.njisst.org




Data recording & submittal sheets

Interactive species map

Target species lists & fact sheets

“Do NOT Plant” & “Watch” lists

Memorandum of understanding (for partners)



Google calendar of events & trainings

Contact:

New Jersey Invasive Species Strike Team

Melissa Almendinger, Executive Director

PO Box 5752, Hillsborough, NJ 08844

www.njisst.org

melissa@njisst.org

