



State of New Jersey

2014-15

OVERVIEW

SOMERSET

WARREN TWP

GRADE SPAN KG-05

35-5470-030

CENTRAL SCHOOL

109 MT BETHEL RD

WARREN, NJ 07059

The New Jersey Department of Education (NJDOE) is pleased to present these annual reports of School Performance. These reports are designed to inform parents, educators and communities about how well a school is performing and preparing its students for college and careers.

In particular, the School Performance Reports seek to:

- **Focus** attention on metrics that are indicative of college and career readiness.
- **Benchmark** a school's performance against other peer schools that are educating similar students, against statewide outcomes, and against state targets to illuminate and build upon a school's strengths and identify areas for improvement.
- **Improve** educational outcomes for students by providing both longitudinal and growth data so that progress can be measured as part of an individual school's efforts to engage in continuous improvement.

While the New Jersey School Performance Reports seek to bring more information to educators and stakeholders about the performance of schools, they do not seek to distill the performance of schools into a single metric, a single score, or a simplified conclusion. Instead, the intention is that educators and stakeholders will engage in deep, lengthy conversations about the full range of the data presented. As educators know well, measuring school performance is both an art and a science. While the School Performance Report brings attention to important student outcomes, NJDOE does not collect data about other essential elements of a school, such as the provision of opportunities to participate and excel in extracurricular activities; the development of non-cognitive skills like time management and perseverance; the pervasiveness of a positive school culture or climate; or the attainment of other employability and technical skills, as many of these data are beyond both the capacity and resources of schools to measure and collect well.

To learn more about New Jersey's school accountability system, please visit: <http://www.nj.gov/education/educators/>.

DEMOGRAPHIC INFORMATION

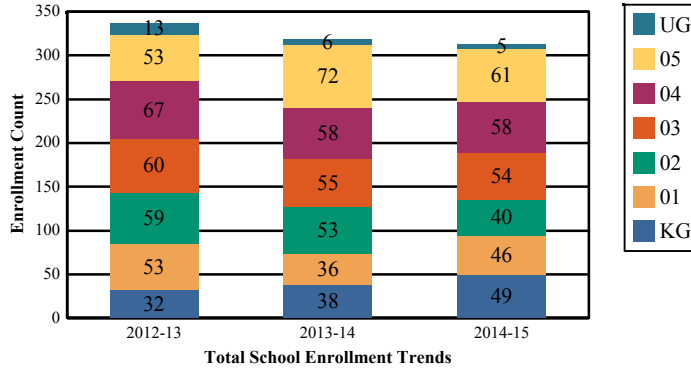
SOMERSET
WARREN TWP

GRADE SPAN KG-05

Enrollment by Ethnic/Racial Subgroup

Enrollment by Grade

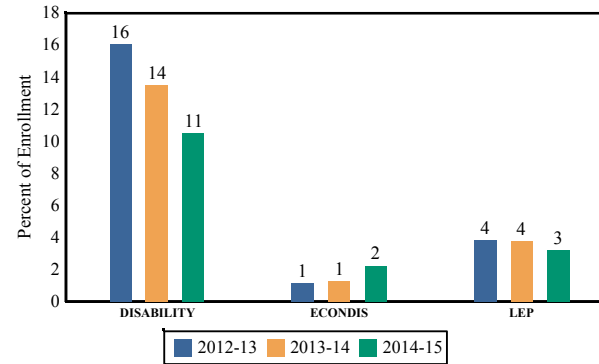
This graph presents the count of students who were 'on roll' by grade in October of each school year.



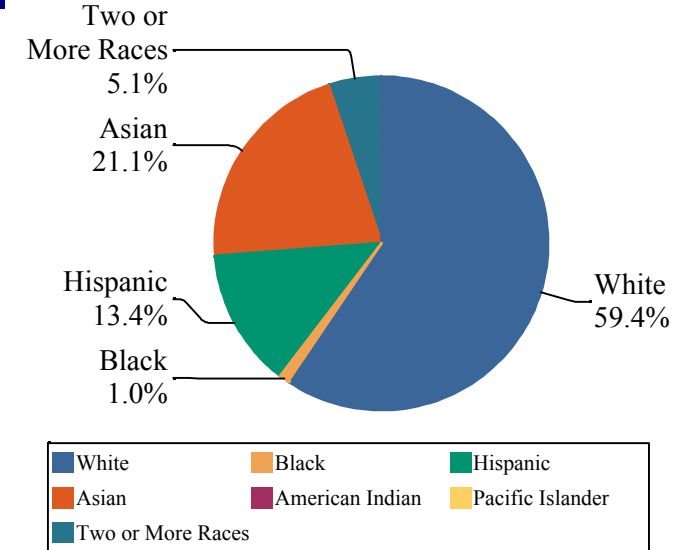
Note: "UG" represents the count of students who are 'on roll' in this school but who are educated in ungraded classrooms, meaning that the classrooms may contain students from multiple grade levels.

Enrollment Trends by Program Participation

This graph presents the percentages of students by program participation who were 'on roll' in October of each school year.



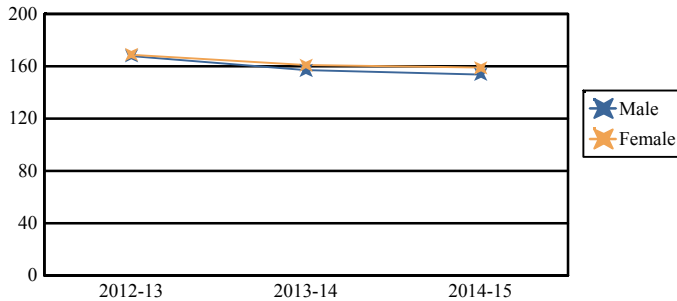
This graph presents the percentages of enrollment for each subgroup defined by the No Child Left Behind Act of 2001.



Total School Enrollment	
2012-13	337
2013-14	318
2014-15	313

Enrollment by Gender

This graph presents the count of students by gender who were 'on roll' in October of each school year.



	Male	Female
2012-13	168	169
2013-14	157	161
2014-15	154	159

Current Year Enrollment by Program Participation		
2014-15	Count of Students	% of Enrollment
Students with Disability	33	11%
Economically Disadvantaged Students	7	2.2%
English Language Learners	10	3.2%

Language Diversity

This table presents the percentage of students who primarily speak each language in their home.

2014-15	Percent
English	79.4%
Chinese	6.5%
Spanish	4.7%
Portuguese	1.9%
Korean	1.3%
Tamil	0.9%
Other	5.3%

ACADEMIC ACHIEVEMENT

SOMERSET
WARREN TWP

GRADE SPAN KG-05

The Academic Achievement section measures the content knowledge that students have in English Language Arts/Literacy (ELA/L) and Math as demonstrated in the 2014-2015 *Partnership for Assessment of Readiness for College and Careers* (PARCC) assessments. The below chart consist of three columns. The first column - Schoolwide Performance - includes the percentage of students in ELA/L and Math who met or exceeded grade level expectations. The middle column - Peer School Percentile - indicates how the school's outcomes compared to its peers. The last column - Statewide Percentile - indicates how the school's outcomes compared to schools across the state.

Academic Achievement Indicators	Schoolwide Performance	Peer Percentile	State Percentile
English Language Arts/Literacy Met or Exceeded Expectation	71%	36	83
Math Met or Exceeded Expectation	68%		

ESEA Waiver - English Language Arts/Literacy

This table presents, for each subgroup in the school, the total number of valid test scores, the percentage of students who met or exceeded expectations, the assessment participation goal, and the participation rate. The participation goal is established as 95% by the United States Department of Education.

Subgroups	Valid Scores	% Meeting Standards	Participation Goal	Participation Rate	Met Participation?
Schoolwide	152	71.1%	95%	98.9%	YES
White	96	69.8%	95%	98.2%	YES
African American	-	-	--	--	--
Hispanic	-	-	--	--	--
American Indian	-	-	--	--	--
Asian	30	93.4%	95%	100%	-
Two or More Races	-	-	--	--	--
Students with Disability	-	-	--	--	--
English Language Learners	-	-	--	--	--
Economically Disadvantaged Students	-	-	--	--	--

YES* = Met Participation Rate (Participation Averaging applied)

Data is presented for subgroups when the count is high enough under ESEA Waiver suppression rules.

ACADEMIC ACHIEVEMENT

SOMERSET
WARREN TWP

GRADE SPAN KG-05

ESEA Waiver - Math

This table presents, for each subgroup in the school, the total number of valid test scores, the percentage of students who met or exceeded expectations, the assessment participation goal, and the participation rate. The participation goal is established as 95% by the United States Department of Education.

Subgroups	Valid Scores	% Meeting Standards	Participation Goal	Participation Rate	Met Participation?
Schoolwide	152	68.4%	95%	98.9%	YES
White	96	66.7%	95%	98.2%	YES
African American	-	-	--	--	--
Hispanic	-	-	--	--	--
American Indian	-	-	--	--	--
Asian	30	93.4%	95%	100%	-
Two or More Races	-	-	--	--	--
Students with Disability	-	-	--	--	--
English Learner Students	-	-	--	--	--
Economically Disadvantaged Students	-	-	--	--	--

YES* = Met Participation Rate (Participation Averaging applied)

Data is presented for subgroups when the count is high enough under ESEA Waiver suppression rules.

ACADEMIC ACHIEVEMENT

SOMERSET
WARREN TWP

GRADE SPAN KG-05

PARCC Performance Level

The PARCC assesses how well students have learned grade-level material in English Language Arts/Literacy (ELA/L) and Math. The tests include questions that measure students' fundamental skills and knowledge, and require them to think critically, solve problems and support or explain their answers.

The PARCC reports students' overall scale scores that range from 650 to 850. To determine whether students have met academic expectations for their grade level/course in ELA/L and Math, students' overall scale scores are categorized into five Performance Levels. Students performing at levels 4 and 5 (met or exceeded expectations) have demonstrated readiness for the next grade level/course, and are on track for college and careers.

Five Performance Levels				
Level 1: Did Not Yet Meet Expectations <i>(Min. 650)</i>	Level 2: Partially Met Expectations	Level 3: Approached Expectations	Level 4: Met Expectations	Level 5: Exceeded Expectations <i>(Max. 850)</i>

ACADEMIC ACHIEVEMENT

SOMERSET
WARREN TWP

GRADE SPAN KG-05

PARCC ELA Performance Distribution - Grade - 03

This table presents the grade level outcomes, as measured by PARCC, in all five performance levels for all subgroups. PARCC consists of five performance levels: Level 1 - Did not yet meet grade-level expectations, Level 2 -Partially met expectations, Level 3 - Approached expectations, Level 4 - Met expectations, and Level 5 - Exceeded expectations.

Subgroup	Valid Scores	Mean Scale Score	State Mean Scale Score	% Level_1	% Level_2	% Level_3	% Level_4	% Level_5	% Met/ Exceeded Expectation	State % Met/Exceeded Expectation
Schoolwide	52	764	744	8%	10%	25%	40%	17%	58%	44%
White	33	757	753	6%	12%	27%	45%	9%	55%	55%
African American	-	-	725	-	-	-	-	-	-	26%
Hispanic	-	-	727	-	-	-	-	-	-	26%
American Indian	-	-	738	-	-	-	-	-	-	40%
Asian	-	-	769	-	-	-	-	-	-	70%
Two or More Races	-	-	751	-	-	-	-	-	-	53%
Students with Disability	-	-	718	-	-	-	-	-	-	24%
English Language Learners	-	-	709	-	-	-	-	-	-	11%
Economically Disadvantaged Students	-	-	724	-	-	-	-	-	-	24%

ACADEMIC ACHIEVEMENT

SOMERSET
WARREN TWP

GRADE SPAN KG-05

PARCC ELA Performance Distribution - Grade - 04

This table presents the grade level outcomes, as measured by PARCC, in all five performance levels for all subgroups. PARCC consists of five performance levels: Level 1 - Did not yet meet grade-level expectations, Level 2 -Partially met expectations, Level 3 - Approached expectations, Level 4 - Met expectations, and Level 5 - Exceeded expectations.

Subgroup	Valid Scores	Mean Scale Score	State Mean Scale Score	% Level_1	% Level_2	% Level_3	% Level_4	% Level_5	% Met/ Exceeded Expectation	State % Met/Exceeded Expectation
Schoolwide	47	784	751	0%	2%	4%	57%	36%	94%	52%
White	31	783	758	0%	3%	3%	61%	32%	94%	63%
African American	-	-	733	-	-	-	-	-	-	30%
Hispanic	-	-	737	-	-	-	-	-	-	35%
American Indian	-	-	746	-	-	-	-	-	-	52%
Asian	11	791	773	0%	0%	0%	55%	45%	100%	78%
Two or More Races	-	-	760	-	-	-	-	-	-	62%
Students with Disability	-	-	725	-	-	-	-	-	-	25%
English Language Learners	-	-	717	-	-	-	-	-	-	15%
Economically Disadvantaged Students	-	-	734	-	-	-	-	-	-	31%

ACADEMIC ACHIEVEMENT

SOMERSET
WARREN TWP

GRADE SPAN KG-05

PARCC ELA Performance Distribution - Grade - 05

This table presents the grade level outcomes, as measured by PARCC, in all five performance levels for all subgroups. PARCC consists of five performance levels: Level 1 - Did not yet meet grade-level expectations, Level 2 -Partially met expectations, Level 3 - Approached expectations, Level 4 - Met expectations, and Level 5 - Exceeded expectations.

Subgroup	Valid Scores	Mean Scale Score	State Mean Scale Score	% Level_1	% Level_2	% Level_3	% Level_4	% Level_5	% Met/ Exceeded Expectation	State % Met/Exceeded Expectation
Schoolwide	53	761	751	4%	6%	26%	53%	11%	64%	53%
White	32	761	757	3%	6%	28%	50%	13%	63%	62%
African American	-	-	734	-	-	-	-	-	-	31%
Hispanic	-	-	737	-	-	-	-	-	-	35%
American Indian	-	-	746	-	-	-	-	-	-	45%
Asian	-	-	771	-	-	-	-	-	-	77%
Two or More Races	-	-	758	-	-	-	-	-	-	61%
Students with Disability	-	-	723	-	-	-	-	-	-	21%
English Language Learners	-	-	717	-	-	-	-	-	-	15%
Economically Disadvantaged Students	-	-	734	-	-	-	-	-	-	31%

ACADEMIC ACHIEVEMENT
SOMERSET
WARREN TWP

GRADE SPAN KG-05

PARCC MATH - Performance Distribution - Grade - 03

This table presents the grade level outcomes, as measured by PARCC, in all five performance levels for all subgroups. PARCC consists of five performance levels: Level 1 - Did not yet meet grade-level expectations, Level 2 -Partially met expectations, Level 3 - Approached expectations, Level 4 - Met expectations, and Level 5 - Exceeded expectations.

Subgroup	Valid Scores	Mean Scale Score	State Mean Scale Score	% Level_1	% Level_2	% Level_3	% Level_4	% Level_5	% Met/ Exceeded Expectation	State % Met/Exceeded Expectation
Schoolwide	52	768	746	4%	12%	15%	38%	31%	69%	46%
White	33	763	752	3%	12%	15%	45%	24%	70%	56%
African American	-	-	728	-	-	-	-	-	-	25%
Hispanic	-	-	733	-	-	-	-	-	-	28%
American Indian	-	-	742	-	-	-	-	-	-	41%
Asian	-	-	772	-	-	-	-	-	-	77%
Two or More Races	-	-	751	-	-	-	-	-	-	54%
Students with Disability	-	-	727	-	-	-	-	-	-	27%
English Language Learners	-	-	724	-	-	-	-	-	-	17%
Economically Disadvantaged Students	-	-	730	-	-	-	-	-	-	26%

ACADEMIC ACHIEVEMENT

SOMERSET
WARREN TWP

GRADE SPAN KG-05

PARCC MATH - Performance Distribution - Grade - 04

This table presents the grade level outcomes, as measured by PARCC, in all five performance levels for all subgroups. PARCC consists of five performance levels: Level 1 - Did not yet meet grade-level expectations, Level 2 -Partially met expectations, Level 3 - Approached expectations, Level 4 - Met expectations, and Level 5 - Exceeded expectations.

Subgroup	Valid Scores	Mean Scale Score	State Mean Scale Score	% Level_1	% Level_2	% Level_3	% Level_4	% Level_5	% Met/ Exceeded Expectation	State % Met/Exceeded Expectation
Schoolwide	47	773	744	0%	4%	15%	64%	17%	81%	42%
White	31	768	749	0%	3%	19%	65%	13%	77%	50%
African American	-	-	727	-	-	-	-	-	-	20%
Hispanic	-	-	732	-	-	-	-	-	-	26%
American Indian	-	-	740	-	-	-	-	-	-	40%
Asian	11	794	769	0%	0%	0%	64%	36%	100%	75%
Two or More Races	-	-	750	-	-	-	-	-	-	52%
Students with Disability	-	-	724	-	-	-	-	-	-	21%
English Language Learners	-	-	722	-	-	-	-	-	-	15%
Economically Disadvantaged Students	-	-	730	-	-	-	-	-	-	23%

ACADEMIC ACHIEVEMENT

SOMERSET
WARREN TWP

GRADE SPAN KG-05

PARCC MATH - Performance Distribution - Grade - 05

This table presents the grade level outcomes, as measured by PARCC, in all five performance levels for all subgroups. PARCC consists of five performance levels: Level 1 - Did not yet meet grade-level expectations, Level 2 -Partially met expectations, Level 3 - Approached expectations, Level 4 - Met expectations, and Level 5 - Exceeded expectations.

Subgroup	Valid Scores	Mean Scale Score	State Mean Scale Score	% Level_1	% Level_2	% Level_3	% Level_4	% Level_5	% Met/ Exceeded Expectation	State % Met/Exceeded Expectation
Schoolwide	53	755	744	2%	13%	28%	43%	13%	57%	42%
White	32	751	749	3%	13%	31%	47%	6%	53%	49%
African American	-	-	728	-	-	-	-	-	-	21%
Hispanic	-	-	733	-	-	-	-	-	-	26%
American Indian	-	-	745	-	-	-	-	-	-	46%
Asian	-	-	768	-	-	-	-	-	-	74%
Two or More Races	-	-	749	-	-	-	-	-	-	50%
Students with Disability	-	-	724	-	-	-	-	-	-	19%
English Language Learners	-	-	724	-	-	-	-	-	-	17%
Economically Disadvantaged Students	-	-	731	-	-	-	-	-	-	23%

2015 National Assessment Educational Progress (NAEP)

The National Assessment of Educational Progress (NAEP) is the largest national assessment of what our nation's students know and can do. NAEP assesses fourth-, eighth-, and twelfth-grade students in subjects such as reading, mathematics, science, and writing. The reporting of NAEP scores on state report cards is a federal mandate. The results of NAEP are also published as the Nation's Report Card, and are available for the nation, states, and, in some cases, urban districts. The NAEP scores on the report card include grades four and eight 2015 reading and math scores for New Jersey which are the last scores published.

For subgroup outcomes, visit:

- Reading Grade 4 <http://www.nj.gov/education/pr/1415/naep/naep4read.html>
- Reading Grade 8 <http://www.nj.gov/education/pr/1415/naep/naep8read.html>
- Math Grade 4 <http://www.nj.gov/education/pr/1415/naep/naep4math.html>
- Math Grade 8 <http://www.nj.gov/education/pr/1415/naep/naep8math.html>

For more information, visit <http://nces.ed.gov/nationsreportcard/>

Proficiency Percentages

Subject	Grade	State/Nation	Below Basic	Basic	Proficient	Advanced
Reading	Grade 4	State (NJ)	25	33	31	12
	Grade 4	Nation	31	33	27	9
	Grade 8	State (NJ)	20	39	35	6
	Grade 8	Nation	24	42	31	4
Math	Grade 4	State (NJ)	14	39	38	9
	Grade 4	Nation	18	42	33	7
	Grade 8	State (NJ)	21	32	30	16
	Grade 8	Nation	29	38	25	8

ACADEMIC ACHIEVEMENT

SOMERSET
WARREN TWP

GRADE SPAN KG-05

NJASK Results - Science Grade Level - 04

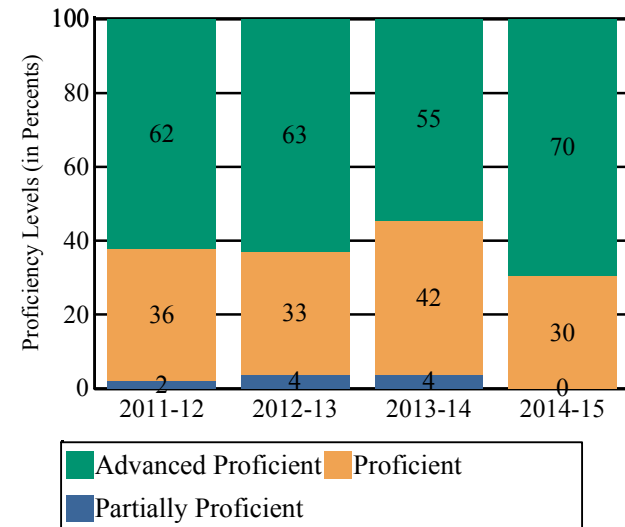
This table presents the grade level proficiency results, as measured by NJASK, in Advanced Proficient, Proficient, and Partially Proficient categories for all appropriate subgroups.

Subgroups	Advanced Proficient	Proficient	Partially Proficient
Schoolwide	70%	30%	0%
White	65%	35%	0%
African American	-	-	-
Hispanic	-	-	-
American Indian	-	-	-
Asian	-	-	-
Two or More Races	-	-	-
Students with Disability	-	-	-
English Language Learners	-	-	-
Economically Disadvantaged Students	-	-	-

Data is presented for subgroups when the count is high enough under ESEA Waiver suppression rules.

NJASK Proficiency Trends - Science - Grade Level - 04

This graph presents the grade level outcomes in the categories of Advanced Proficient, Proficient, and Partially Proficient over the last four years.



COLLEGE AND CAREER READINESS

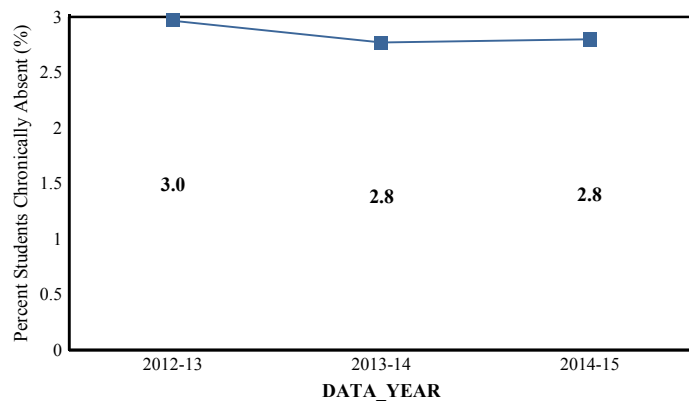
SOMERSET
WARREN TWP

GRADE SPAN KG-05

Students in both elementary and middle schools begin to demonstrate college readiness behaviors long before they even enter high school. Among the behaviors that research has shown to be indicative of successfully graduating high school is regularly attending school. For all elementary schools, this includes the percentage of students that are chronically absent each year, defined as missing more than 10% of possible school days.

Chronic Absenteeism Trend

This graph presents the percentage of the enrolled students who were chronically absent for the past three years.

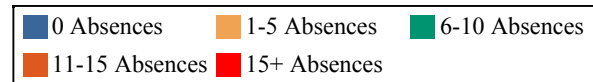
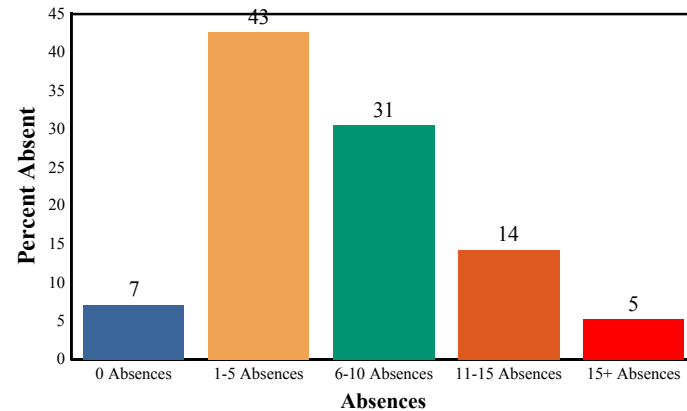


Chronic Absenteeism for 2014-15

2.80%

Absenteeism

The chart below presents the percentage of students who were absent in each category of absence: 0 absences, 1- 5 absences, 6 - 10 absences, 11 - 15 absences, and more than 15 absences. An absence is defined as being ‘not present’ and includes the days missed regardless of whether they were determined to be excused or unexcused by the school.



STUDENT GROWTH

SOMERSET

GRADE SPAN KG-05

WARREN TWP

This section of the performance report presents data about student growth, utilizing the Student Growth Percentile Methodology (SGP). SGP creates a measure of how students progressed in grades 4 through 8 in Language Arts Literacy and in grades 4 through 7 in Math when compared to other students with a similar test score history. A short video explaining the methodology can be found here: <http://www.state.nj.us/education/njsmart/performance/>

The below chart consist of five columns with measures. The first column - Schoolwide Performance - presents the schoolwide median growth score in either English Language Arts/Literacy or Mathematics for all students in the school. The second column - Peer Percentile - indicates how the school's growth performance compares to its group of peer schools. The third column - Statewide Percentile - indicates how a school compares to schools across the state. The last column - Met Target? - indicates whether the school's performance met or exceeded the statewide target, which was set to 35.

The fourth row presents the averages of the peer school percentiles, the averages of statewide percentiles, the percentage of statewide targets met.

Student Growth Indicators	Schoolwide Performance	Peer Percentile	Statewide Percentile	Statewide Target	Met Target?
Student Growth on Language Arts	52	41	53	35	YES
Student Growth on Math	57	60	66	35	YES
		51	60		100%

Student Growth

This table presents for all students with growth scores the interaction between their performance on PARCC and their growth scores. For example, in the top left cell the percentage of students who are both in Level 1 - Did not yet meet expectations AND also demonstrating low growth is displayed.

Language Arts

(Expectations)	GROWTH		
	Low	Typical	High
Did Not Yet Meet	1%	1%	0%
Partially Met	3%	1%	0%
Approached	9%	6%	1%
Met	16%	19%	19%
Exceeded	0%	4%	21%

Math

(Expectations)	GROWTH		
	Low	Typical	High
Did Not Yet Meet	1%	0%	0%
Partially Met	5%	3%	1%
Approached	9%	8%	4%
Met	12%	22%	21%
Exceeded	0%	1%	13%

Low Growth is defined as an **Student Growth Percentile** score less than 35.

Typical Growth is defined as an **Student Growth Percentile** score between 35 and 65.

High Growth is defined as a **Student Growth Percentile** score higher than 65.

WITHIN SCHOOL ACHIEVEMENT GAP

SOMERSET
WARREN TWP

GRADE SPAN KG-05

This section of the performance report presents data about the achievement gap that exists within a school - as measured by the difference between the students' scale scores at the 25th and 75th percentile in the school, the Interquartile Range (IQR). Taken together with an understanding of the overall and average achievement levels in the school, the IQR furthers an understanding of the range of student outcomes that exist in a school. A school gap smaller than the state gap indicates that the school's range of student outcomes is narrower than the state's while a school gap larger than the state gap indicates that the school's range of student outcomes is broader than the state's.

Grade Level - 03

PARCC Language Arts 25th %ile vs 75th%ile

This table presents the scale scores associated with students at the bottom (0th percentile), the 25th percentile, the 50th percentile, the 75th percentile and the top (99th percentile) of school's distribution.

Percentile	School Scale Score	State Scale Score
99th	850	850
75th	797	770
50th	758	743
25th	734	715
0th	659	650

	Scale Score Gap - School	Scale Score Gap - State
25th vs 75th Gap	63	55

Grade Level - 03

PARCC MATH 25th %ile vs 75th%ile

This table presents the scale scores associated with students at the bottom (0th percentile), the 25th percentile, the 50th percentile, the 75th percentile and the top (99th percentile) of school's distribution.

Percentile	School Scale Score	State Scale Score
99th	828	850
75th	795	767
50th	770	745
25th	746	722
0th	663	650

	Scale Score Gap - School	Scale Score Gap - State
25th vs 75th Gap	49	45

WITHIN SCHOOL ACHIEVEMENT GAP

SOMERSET
WARREN TWP

GRADE SPAN KG-05

Grade Level - 04

PARCC Language Arts 25th %ile vs 75th%ile

This table presents the scale scores associated with students at the bottom (0th percentile), the 25th percentile, the 50th percentile, the 75th percentile and the top (99th percentile) of school's distribution.

Percentile	School Scale Score	State Scale Score
99th	840	850
75th	798	773
50th	782	750
25th	760	728
0th	709	650

	Scale Score Gap - School	Scale Score Gap - State
25th vs 75th Gap	38	45

Grade Level - 05

PARCC Language Arts 25th %ile vs 75th%ile

This table presents the scale scores associated with students at the bottom (0th percentile), the 25th percentile, the 50th percentile, the 75th percentile and the top (99th percentile) of school's distribution.

Percentile	School Scale Score	State Scale Score
99th	831	850
75th	782	773
50th	764	751
25th	746	728
0th	691	650

	Scale Score Gap - School	Scale Score Gap - State
25th vs 75th Gap	36	45

Grade Level - 04

PARCC MATH 25th %ile vs 75th%ile

This table presents the scale scores associated with students at the bottom (0th percentile), the 25th percentile, the 50th percentile, the 75th percentile and the top (99th percentile) of school's distribution.

Percentile	School Scale Score	State Scale Score
99th	842	850
75th	789	764
50th	771	742
25th	750	721
0th	705	650

	Scale Score Gap - School	Scale Score Gap - State
25th vs 75th Gap	39	43

Grade Level - 05

PARCC MATH 25th %ile vs 75th%ile

This table presents the scale scores associated with students at the bottom (0th percentile), the 25th percentile, the 50th percentile, the 75th percentile and the top (99th percentile) of school's distribution.

Percentile	School Scale Score	State Scale Score
99th	816	850
75th	776	763
50th	759	743
25th	734	723
0th	697	650

	Scale Score Gap - School	Scale Score Gap - State
25th vs 75th Gap	42	40

SCHOOL CLIMATE

SOMERSET
WARREN TWP

GRADE SPAN KG-05

Length of School Day

This table presents the amount of time a school is in session for a typical student on a normal school day.

	School
2014-15	6 Hrs. 40 Mins.

Student Suspension Rate

This table presents the percentage of students who were suspended one or more times during the school year.

	School
2014-15	0.0%

Instructional Time

This table presents the amount of time that a typical student is engaged in instructional activities under the supervision of a certified teacher.

2014-15	School
Full Time	5 Hrs. 40 Mins.
Shared Time	0 Hrs. 0 Mins.

Student Expulsions

This table presents the number of students who were expelled from the school and district during the school year.

	School
2014-15	0

Student to Staff Ratio

This table presents the count of students per faculty member or administrator in the school. All staff are counted in full-time equivalents.

2014-15	School
Faculty	9
Administrators	313

SCHOOL PEER GROUP

SOMERSET

WARREN TWP

GRADE SPAN KG-05

This table presents the list of peer schools in alphabetical order by county name that was created specifically for this school (highlighted in yellow). Peer schools are drawn from across the state and represent schools that have similar grade configurations and that are educating students of similar demographic characteristics, as measured by enrollment in Free/Reduced Lunch Programs, Limited English Proficiency or Special Education Programs.

<u>COUNTY NAME</u>	<u>DISTRICT NAME</u>	<u>SCHOOL NAME</u>	<u>CDS CODE</u>	<u>GRADES PAN</u>	<u>ECONOMICALLY DISADVANTAGED</u>	<u>ENGLISH LANGUAGE LEARNERS</u>	<u>SPECIAL EDUCATION</u>
BERGEN	ALLENDALE BORO	HILLSIDE ELEMENTARY SCHOOL	03-0040-020	PK-03	0.6%	1.1%	6.9%
BERGEN	GLEN ROCK BORO	CENTRAL SCHOOL	03-1760-080	KG-05	0.7%	0.3%	16.2%
BERGEN	MAHWAH TWP	BETSY ROSS ELEMENTARY	03-2900-060	KG-03	3.8%	5.6%	6.8%
BERGEN	PARAMUS BORO	MEMORIAL ELEMENTARY SCHOOL	03-3930-080	KG-04	5%	7.6%	12.4%
BERGEN	PARAMUS BORO	RIDGE RANCH ELEMENTARY SCHOOL	03-3930-110	PK-04	4.8%	6.1%	15.6%
BERGEN	RIDGEWOOD VILLAGE	RIDGE ELEMENTARY SCHOOL	03-4390-090	KG-05	1.2%	1.2%	11.8%
BERGEN	RIDGEWOOD VILLAGE	WILLARD ELEMENTARY SCHOOL	03-4390-130	KG-05	1%	1.4%	12.9%
BERGEN	SADDLE RIVER BORO	WANDELL SCHOOL	03-4620-050	PK-05	0%	0%	15.6%
BERGEN	TENAFLY BORO	RALPH S MAUGHAM SCHOOL	03-5160-090	KG-05	4.3%	5.8%	16.3%
BERGEN	WOODCLIFF LAKE BORO	DORCHESTER ELEMENTARY SCHOOL	03-5880-030	PK-05	0.6%	0.6%	14.4%
CAMDEN	HADDONFIELD BORO	ELIZABETH HADDON SCHOOL	07-1900-080	PK-05	0.3%	0%	13.8%
CAPE MAY	STONE HARBOR BORO	STONE HARBOR ELEMENTARY SCHOOL	09-5060-050	KG-04	0%	0%	7.4%
ESSEX	GLEN RIDGE BORO	RIDGEWOOD AVENUE SCHOOL	13-1750-075	03-06	0.2%	0%	17.3%
ESSEX	LIVINGSTON TWP	HILLSIDE ELEMENTARY SCHOOL	13-2730-100	KG-05	3%	4.2%	11.8%
ESSEX	NORTH CALDWELL BORO	GRANDVIEW ELEMENTARY SCHOOL	13-3630-060	PK-03	0%	0%	8%
ESSEX	VERONA BORO	FOREST AVENUE SCHOOL	13-5370-090	KG-04	0%	0%	14.6%
ESSEX	VERONA BORO	LANING AVENUE SCHOOL	13-5370-100	PK-04	0.4%	0%	12.1%
MONMOUTH	FAIR HAVEN BORO	VIOLA L SICKLES SCHOOL	25-1440-060	PK-03	0%	0%	9.3%
MONMOUTH	ROOSEVELT BORO	ROOSEVELT PUBLIC SCHOOL	25-4520-050	PK-06	0%	0%	11.4%
MORRIS	FLORHAM PARK BORO	BROOKLAKE SCHOOL	27-1530-020	03-05	1%	0.7%	12.8%
MORRIS	HANOVER TWP	MOUNTVIEW ROAD SCHOOL	27-2000-050	KG-05	2.4%	2.6%	14.1%
MORRIS	LONG HILL TWP	MILLINGTON ELEMENTARY SCHOOL	27-4000-060	02-05	3%	4.2%	22.9%
MORRIS	MOUNTAIN LAKES BORO	WILDWOOD ELEMENTARY SCHOOL	27-3460-080	KG-05	0%	0%	13.9%

SCHOOL PEER GROUP

SOMERSET

WARREN TWP

GRADE SPAN KG-05

MORRIS	PEQUANNOCK TWP	STEPHEN J. GERACE SCHOOL	27-4080-100	KG-05	3.3%	4.3%	8.6%
MORRIS	RANDOLPH TWP	SHONGUM SCHOOL	27-4330-080	KG-05	0.8%	0.6%	13.5%
PASSAIC	WAYNE TWP	PINES LAKE ELEMENTARY SCHOOL	31-5570-120	KG-05	6%	9%	21%
SOMERSET	WARREN TWP	CENTRAL SCHOOL	35-5470-030	KG-05	2.2%	3.2%	10.5%
UNION	BERKELEY HEIGHTS TWP	MOUNTAIN PARK SCHOOL	39-0310-040	02-05	0.4%	0%	12.8%
UNION	BERKELEY HEIGHTS TWP	THOMAS P. HUGHES SCHOOL	39-0310-020	02-05	1.2%	1.2%	9.4%
UNION	WESTFIELD TOWN	JEFFERSON ELEMENTARY SCHOOL	39-5730-120	01-05	0.4%	0.2%	11.8%
UNION	WESTFIELD TOWN	WILSON ELEMENTARY SCHOOL	39-5730-160	01-05	0.3%	0%	22.1%