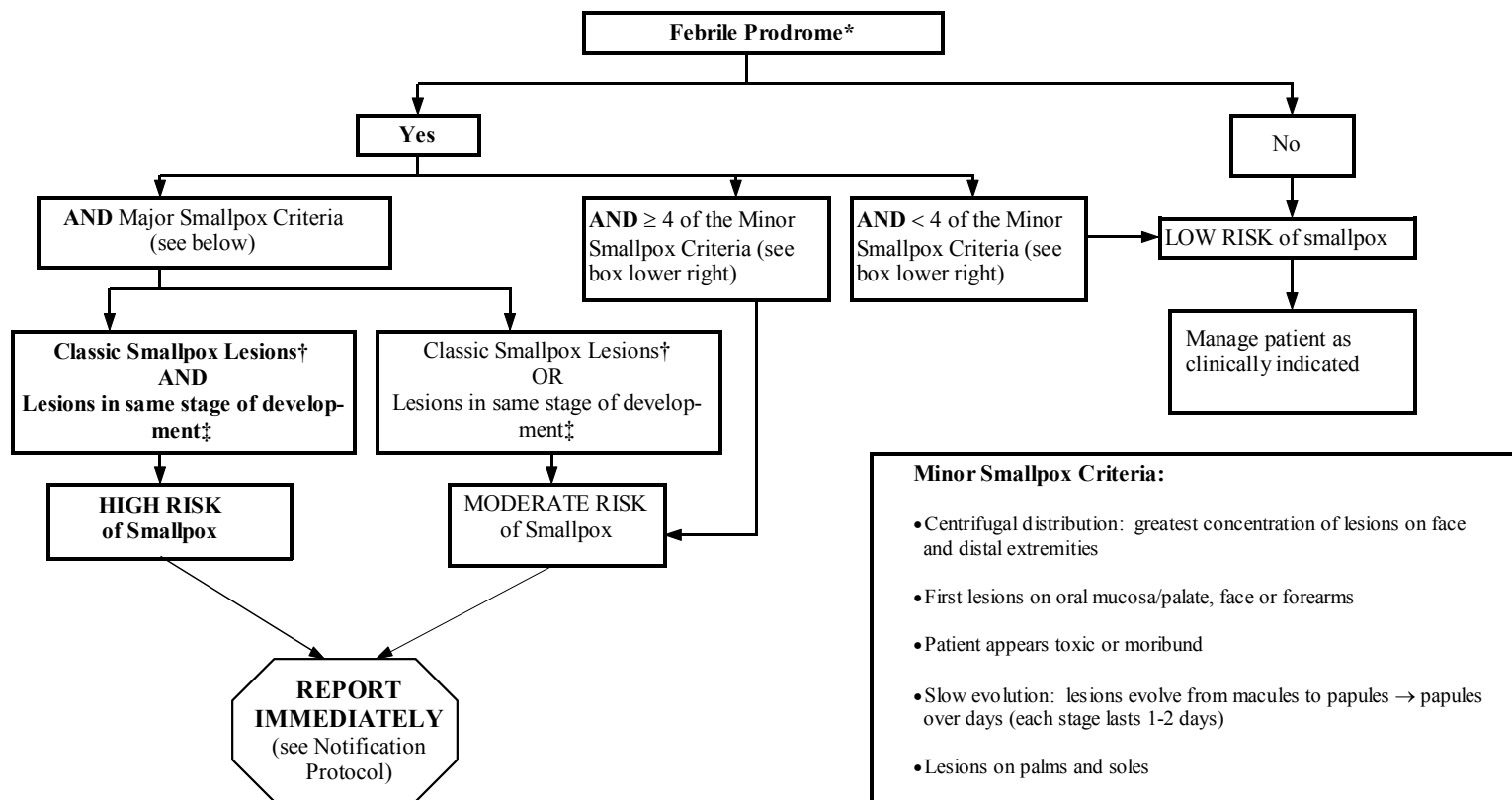


**EVALUATING PATIENTS FOR SMALLPOX:
ACUTE, GENERALIZED, VESICULAR OR PUSTULAR RASH ILLNESS PROTOCOL**
(adapted from CDC websites, <http://www.cdc.gov/nip/smallpox> and <http://www.bt.cdc.gov/EmContact/index.asp>)



- Minor Smallpox Criteria:**
- Centrifugal distribution: greatest concentration of lesions on face and distal extremities
 - First lesions on oral mucosa/palate, face or forearms
 - Patient appears toxic or moribund
 - Slow evolution: lesions evolve from macules to papules → papules over days (each stage lasts 1-2 days)
 - Lesions on palms and soles

Major Smallpox Criteria

***Febrile prodrome:** 1-4 days before rash onset; fever $\geq 101^{\circ}\text{F}$ and at least one of the following: prostration, headache, backache, chills, vomiting, or severe abdominal pain

†**Classic smallpox lesions:** deep-seated, firm/hard, round well-circumscribed vesicles or pustules; as they evolve, lesions may become umbilicated or confluent

‡**Lesions in same stage of development:** on any one part of the body (e.g., face or arm) all the lesions are in the same stage of development (i.e., all are vesicles or all are pustules)