

**Table 1. Health Insurance Coverage by Source, 2000-2006
New Jersey**

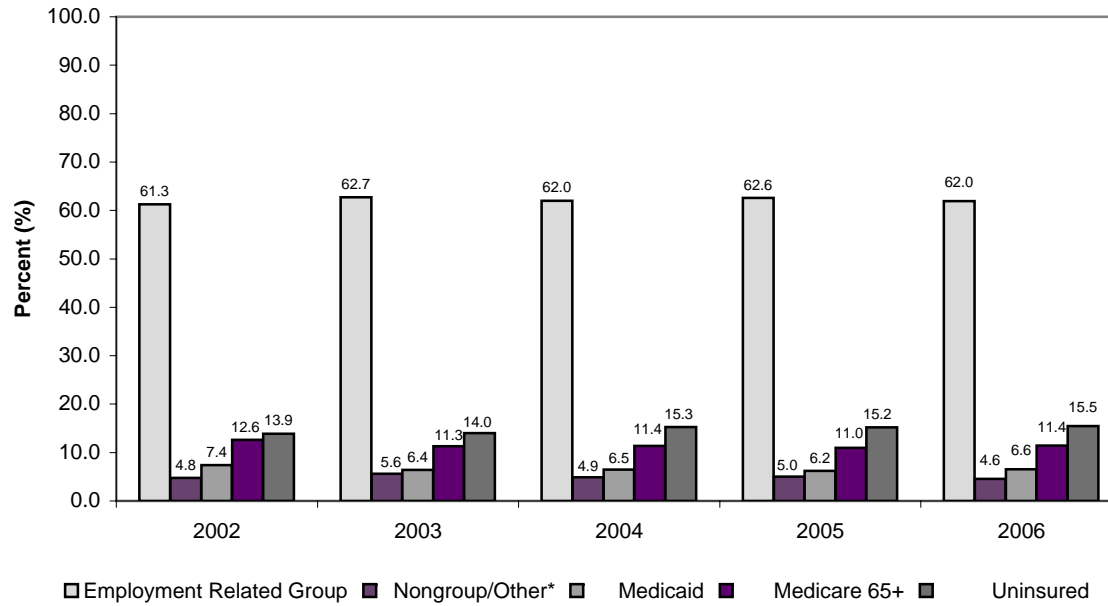
Year	Employment Related Group		Nongroup/Other*		Medicaid		Medicare 65+		Uninsured		Total
	No.	%	No.	%	No.	%	No.	%	No.	%	
2002	5,271,883	61.3	411,564	4.8	636,890	7.4	1,087,469	12.6	1,196,593	13.9	8,604,399
2003	5,380,393	62.7	480,149	5.6	549,666	6.4	967,941	11.3	1,200,812	14.0	8,578,961
2004	5,373,120	62.0	426,293	4.9	560,290	6.5	983,211	11.4	1,321,743	15.3	8,664,656
2005	5,455,301	62.6	435,610	5.0	541,092	6.2	956,205	11.0	1,323,779	15.2	8,711,987
2006	5,366,100	62.0	397,221	4.6	566,946	6.6	988,690	11.4	1,341,005	15.5	8,659,962
2000-2002		62.4		4.9		6.4		13.2		13.1	
2001-2003		62.0		5.0		6.7		12.6		13.7	
2002-2004		62.0		5.1		6.8		11.8		14.4	
2003-2005		62.5		5.2		6.4		11.2		14.8	
2004-2006		62.2		4.8		6.4		11.3		15.3	

* For persons under age 65, other insurance includes Champus and Medicare. For persons 65 and over, other insurance just includes Champus. Medicare is a separate category for those 65 and over.

Note: Estimates based on weighted data

Source: Current Population Survey: Annual Demographic File, 2001-2007, Bureau of the Census

Figure 1. Percent Health Insurance Coverage By Source, New Jersey, 2002-2006



* For persons under age 65, other insurance includes Champus and Medicare. For persons 65 and over, other insurance just includes Champus. Medicare is a separate category for those 65 and over.

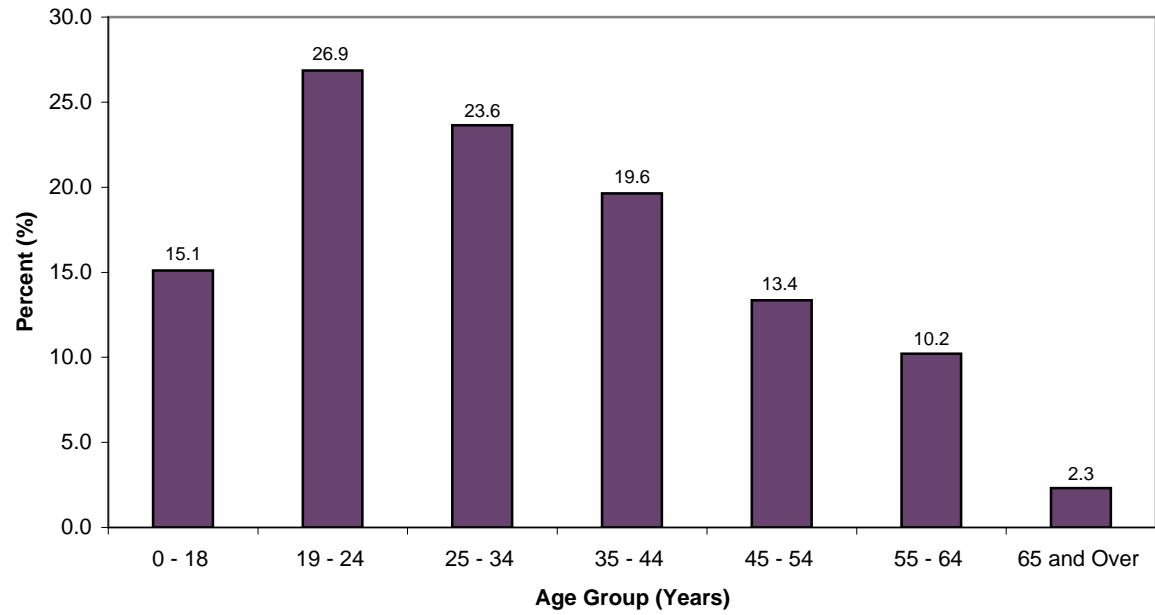
**Table 2. Uninsured by Age
New Jersey, 2002 - 2006**

Age Group (years)	2005		2006		2002-2004		2003-2005		2004-2006	
	No.	%	No.	%	No.	%	No.	%	No.	%
0 - 18	258536	11.3	299274	13.6	760,994	11.1	791,921	11.5	827,066	12.2
19 - 24	196052	30.4	195377	14.6	587,765	31.8	604,431	32.2	607,156	26.9
25 - 34	314181	27.7	256396	19.1	787,042	24.0	829,080	25.4	825,747	23.6
35 - 44	236268	17.4	278518	20.8	672,192	16.1	716,752	17.3	807,584	19.6
45 - 54	170313	12.8	192001	14.3	506,371	13.1	494,155	12.5	531,749	13.4
55 - 64	115287	13.0	88161	6.6	364,006	13.9	351,688	13.0	307,015	10.2
65 and Over	33142	3.1	31279	2.3	40,779	1.3	58,307	1.8	80,211	2.3
Total	1323779	15.2	1341005	15.5	3,719,149	14.4	3,846,334	14.8	3,986,527	15.3

Note: Estimates based on weighted data

Source: Current Population Survey: Annual Demographic File, 2003-2007, Bureau of the Census

Figure 2. Percent Uninsured by Age, New Jersey, (average) 2004-2006



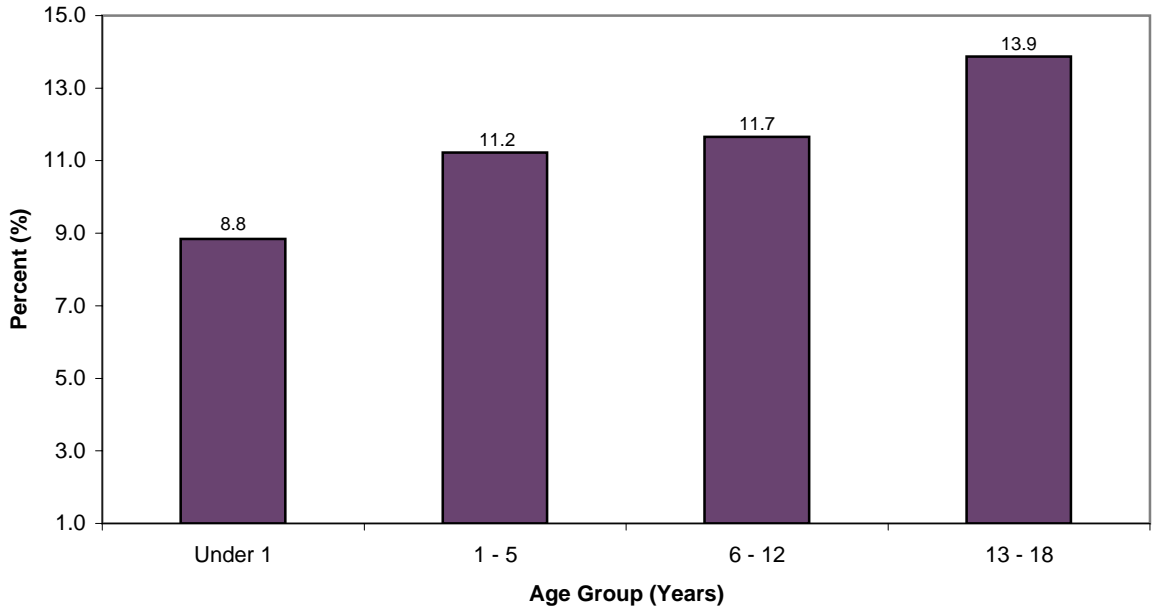
**Table 3. Health Insurance Coverage by Age, 2002-2006
New Jersey Residents Under Age 19**

Age Group (years)	2005		2006		2002-2004	2003-2005	2004-2006
	Uninsured No.	%	Uninsured No.	%	Uninsured %	Uninsured %	Uninsured %
Under 1	6,330	6.1	12,588	10.9	8.6	8.9	8.8
1 - 5	56,369	9.6	72,588	12.9	10.8	10.9	11.2
6 - 12	80,740	10.2	102,486	12.9	9.9	10.3	11.7
13 - 18	115,096	14.2	111,612	15.1	12.9	13.7	13.9
Total	258,536	11.3	299,274	13.6	11.1	11.5	12.2

Note: Estimates based on weighted data

Source: Current Population Survey: Annual Demographic File, 2003-2007, Bureau of the Census

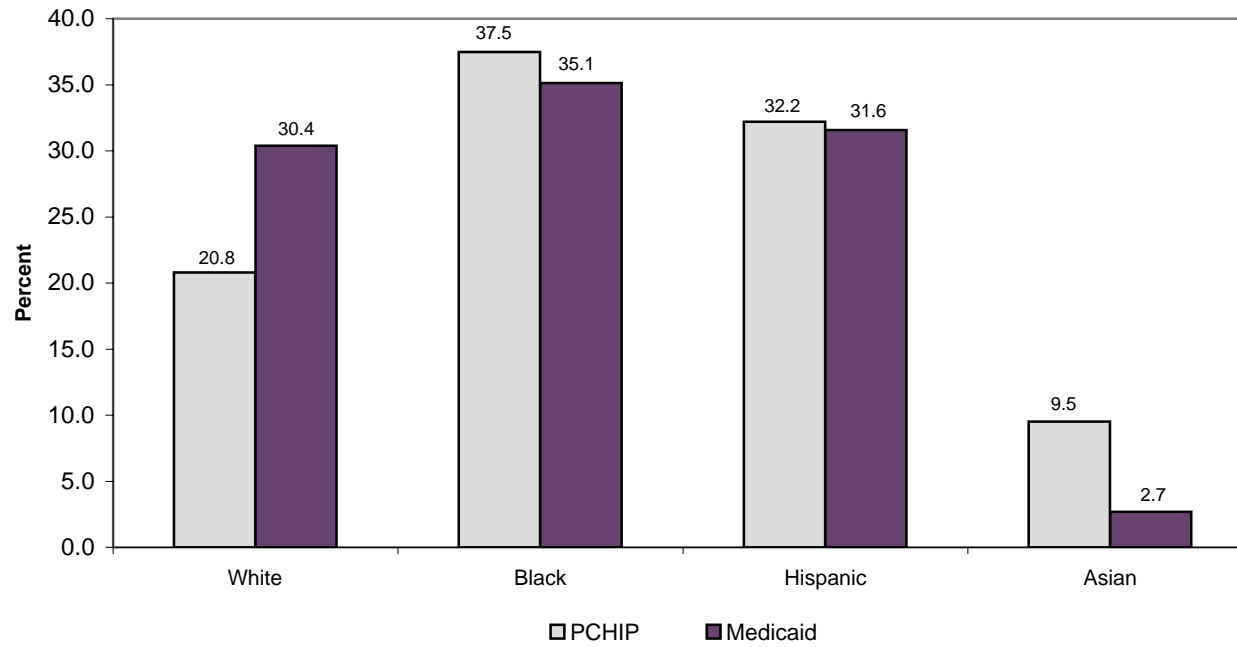
**Figure 3. Percent Uninsured by Age,
New Jersey Residents Under Age 19, 2004-2006**



**Table 4. Characteristics of PCHIP and Medicaid Enrollees,
New Jersey, 2002-2006, Population Under Age 19**

	2005		2006		2002-2004		2003-2005		2004-2006	
	PCHIP	Medicaid	PCHIP	Medicaid	PCHIP	Medicaid	PCHIP	Medicaid	PCHIP	Medicaid
Percent of Population (%)	1.9	13.7	1.5	15.26	1.9	13.3	2.0	13.1	1.87	13.9
Estimated Enrollment (N)	43,152	293,191	32,297	336,755	42,821	302,470	137,735	302,470	127,284	944,370
Age (%)										
<1	10.98	6.0	17.7	9.8	7.4	5.9	10.8	6.4	11.6	7.2
1-5	28.81	32.1	36.0	31.4	28.4	30.2	31.4	31.1	36.0	31.2
6-12	37.72	28.7	21.0	32.9	33.2	32.4	27.5	32.0	27.4	32.2
13-18	22.49	33.3	25.4	26.0	31.0	31.4	30.2	30.6	25.0	29.5
Race/Ethnicity (%)										
White	12.64	34.9	25.8	26.1	25.8	30.4	43.2	40.5	20.8	24.4
Black	14.73	31.8	47.9	24.5	36.1	35.1	32.7	33.3	37.5	29.1
Hispanic	63.1	29.7	26.3	46.6	31.5	31.6	15.4	23.5	32.2	43.4
Asian	9.53	3.4	0.0	0.9	6.6	2.7	8.8	2.8	9.5	2.5
Ratio of Income to FPL* (%)										
Below Poverty	39.48	39.3	48.8	44.6	29.3	40.7	32.5	42.1	36.9	42.8
<133% Poverty	14.3	13.7	30.1	18.8	11.5	14.5	10.7	15.5	15.2	16.6
133% and Over Poverty	46.22	47.0	21.2	36.5	59.2	44.8	56.8	42.4	47.9	40.7
<i>*Federal Poverty Level</i>										
<i>Note: Estimates based on weighted data</i>										
<i>Source: Current Population Survey: Annual Demographic File, 2003-2007, Bureau of the Census</i>										

**Figure 4. Percent PCHIP and Medicaid Enrollees,
New Jersey Population Under Age 19, 2004-2006**



**Table 5. Percent Uninsured by Ratio of Family Income to Federal Poverty Level (FPL)
New Jersey Population Under Age 65, 2003-2006**

Ratio of income to FPL	2005		2006		2003-2005		2004-2006	
	n	Percent	n	Percent	n	Percent	n	Percent
<.50	107,494	34.8	92,154	57.8	431,483	42.6	336,433	44.6
.50-.74	37,559	32.0	64,378	51.9	143,885	30.5	154,528	37.6
.75-.99	80,778	42.5	67,528	50.4	186,429	36.8	207,277	42.7
1.00-1.24	55,842	26.4	53,996	38.3	225,416	34.6	206,451	36.6
1.25-1.49	69,844	41.4	52,333	49.7	230,344	38.7	187,332	41.4
1.50-1.74	75,260	30.7	34,274	30.4	259,824	36.9	226,265	35.6
1.75-1.99	94,854	32.5	58,035	36.4	230,697	28.2	224,685	33.2
2.00-2.49	155,115	30.5	112,370	33.3	439,947	28.8	427,929	31.0
2.50-2.99	125,710	24.6	81,327	26.8	335,415	22.4	313,611	23.9
3.00-3.49	61,389	13.4	71,352	21.5	202,169	13.6	218,105	17.2
3.50-3.99	52,312	10.0	62,462	23.3	178,025	11.3	194,772	16.1
4.00-4.49	58,636	15.1	41,105	14.1	120,547	8.9	132,282	12.0
4.50-4.99	55,307	13.0	33,701	9.9	118,955	9.6	135,829	10.9
5.00 and over	260,536	7.9	185,436	7.3	684,892	7.3	641,541	7.3
Total	1,290,637	16.9	1,010,452	18.9	3,788,027	16.6	3,607,042	17.6

Note: Estimates based on weighted data

Source: Current Population Survey: Annual Demographic File, 2004-2007, Bureau of the Census

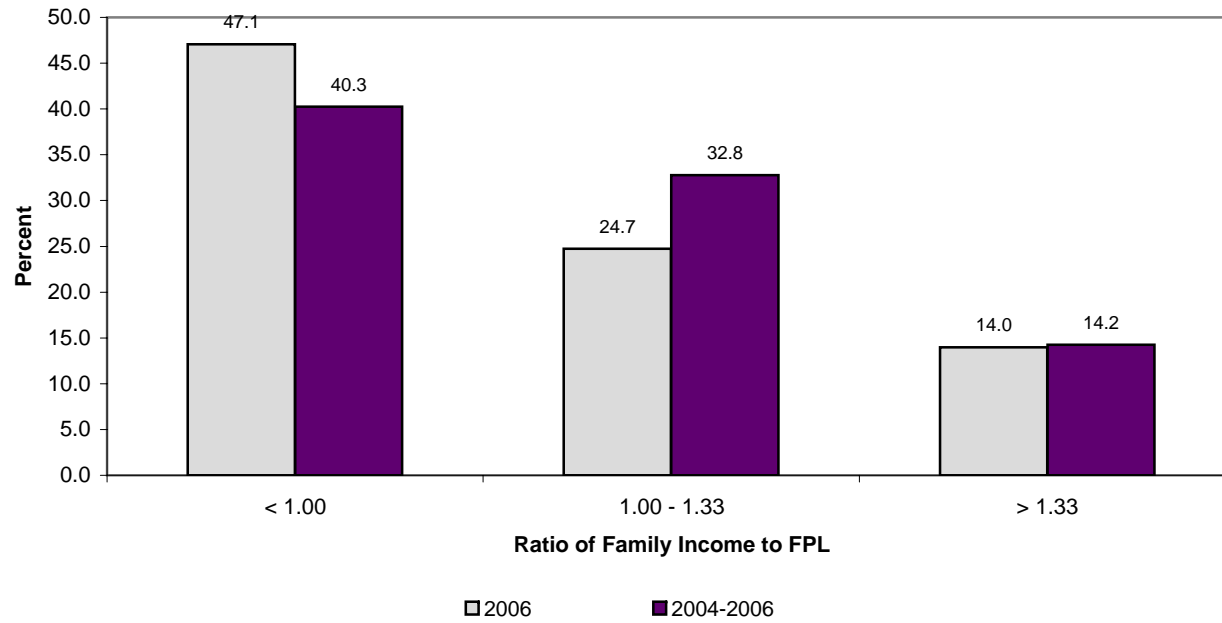
**Table 6. Percent Uninsured by Ratio of Family Income to Federal Poverty Level (FPL)
New Jersey Population Under Age 65, 2003-2006**

Ratio of Family Income to FPL	2005		2006		2003-2005		2004-2006	
	No.	%	No.	%	No.	%	No.	%
< 1.00	225,832	36.6	333,674	47.1	761,797	38.2	806,296	40.3
1.00 - 1.33	80,680	31.8	69,336	24.7	301,530	36.2	265,851	32.8
> 1.33	984,125	14.5	903,709	14.0	2,724,700	13.6	2,813,018	14.2
Total	1,290,637	16.9	1,306,718	17.5	3,788,026	16.6	3,885,164	17.2

Note: Estimates based on weighted data

Source: Current Population Survey: Annual Demographic File, 2004-2007, Bureau of the Census

**Figure 6. Percent Uninsured by Ratio of Family Income to Federal Poverty Level (FPL),
New Jersey Residents Under Age 65, 2006 and 2004-2006**

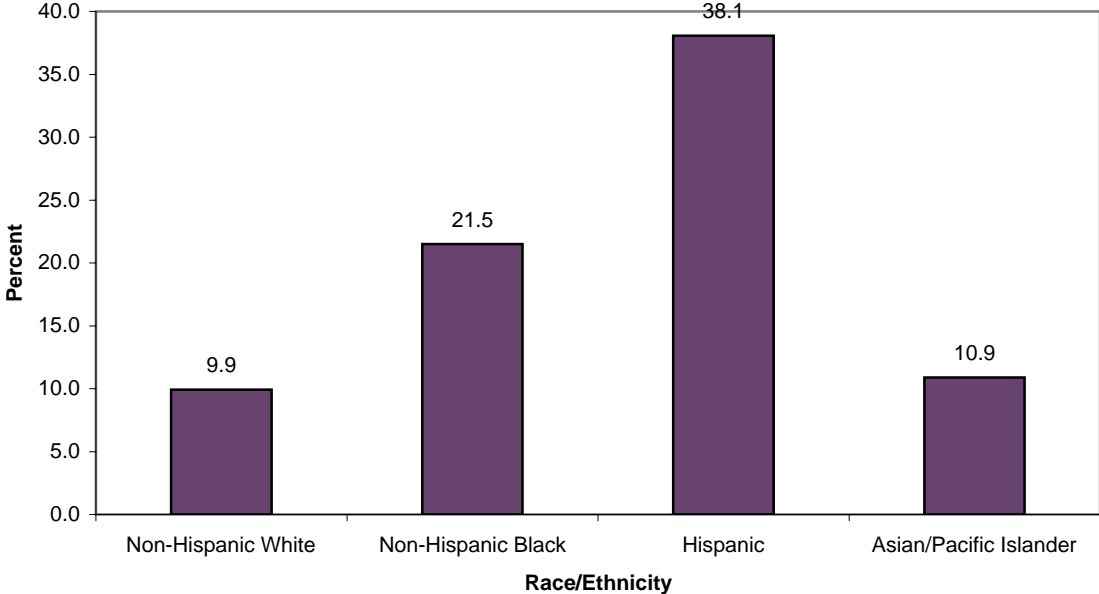


**Table 7. Percent Uninsured by Race and Ethnicity, 2003-2006
New Jersey Residents Under Age 65**

Race/Ethnicity	2005		2006		2003-2005		2004-2006	
	No.	%	No.	%	No.	%	No.	%
Non-Hispanic White	422,817	9.2	468,444	10.7	1,380,460	9.7	891,261	9.9
Non-Hispanic Black	226,825	22.3	213,485	20.7	756,834	24.0	440,310	21.5
Hispanic/Latino	522,882	36.4	526,659	39.9	1,352,741	35.9	1,049,542	38.1
Asian/Pacific Islander	105,603	20.4	97,900	13.3	275,724	17.9	203,504	10.9
Total	1,279,154	16.9	1,309,726	17.3	3,767,800	16.6	2,588,881	17.1

Note: Estimates based on weighted data
Source: Current Population Survey: Annual Demographic File, 2004-2007, Bureau of the Census

**Figure 7. Percent Uninsured by Race and Ethnicity,
New Jersey Residents Under Age 65, 2004-2006**



**Table 8. Health Insurance Coverage Source, by Race, Ethnicity, and Nativity,
New Jersey Residents Under Age 65, 2006**

	Employment Related Group		Nongroup/ Other*		Medicaid		Uninsured		Total
	No.	%	No.	%	No.	%	No.	%	
Non-Hispanic White									
Native Born	3,196,070	79.8	247,494	6.18	157,321	3.9	404,147	10.1	4,005,032
Foreign Born	268,628	71.9	27,607	7.39	12,923	3.5	64,298	17.2	373,456
Non-Hispanic Black									
Native Born	551,094	62.8	49,095	5.6	128,526	14.7	148,384	16.9	877,099
Foreign Born	86,143	55.9	2,922	1.9	0	0.0	65,101	42.2	154,166
Hispanic/Latino									
Native Born	317,796	46.0	20,814	3.0	191,105	27.7	161,113	23.3	690,828
Foreign Born	210,431	33.5	12,246	2.0	39,656	6.3	365,546	58.2	627,879
Asian/Pacific Islander									
Native Born	199,345	84.9	5,111	2.2	9,051	3.9	21,323	9.1	234,830
Foreign Born	390,178	77.9	17,779	3.6	16,560	3.3	76,577	15.3	501,094
Total									
Native Born	4,264,305	68	322,514	4	486,003	13	734,967	15	5,807,789
Foreign Born	955,380	60	60,554	4	69,139	3	571,522	33	1,656,595

* For Persons under 65, Other insurance includes Champus and Medicare.

Note: Estimates based on weighted data

Source: Current Population Survey: Annual Demographic File, 2007, Bureau of the Census

**Figure 8. Percent Uninsured, by Race, Ethnicity, and Nativity,
New Jersey Residents Under Age 65, 2006**

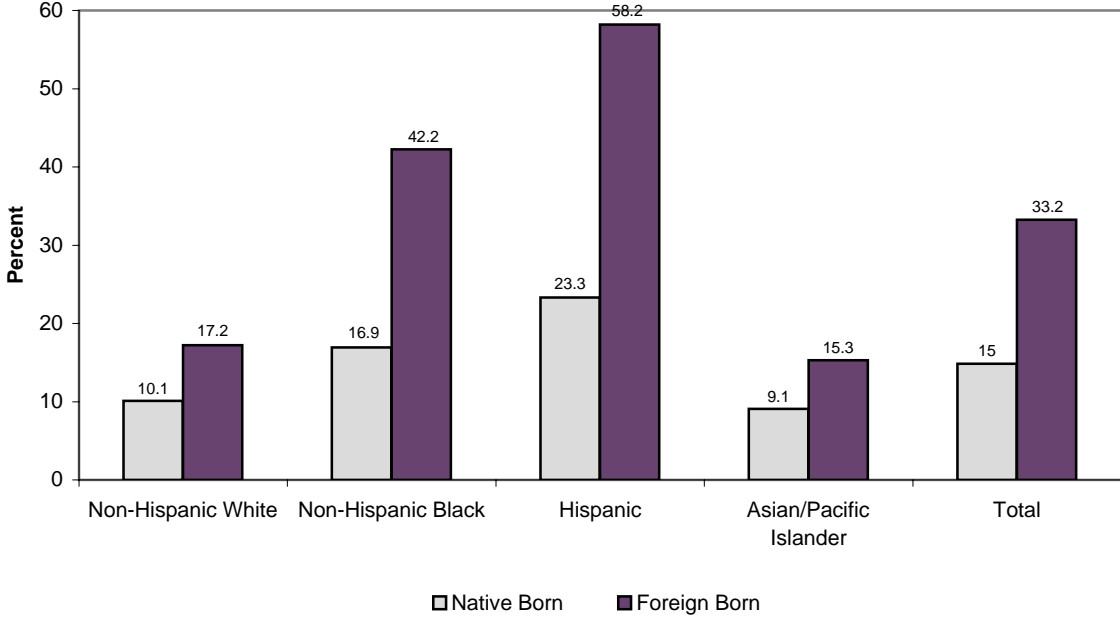
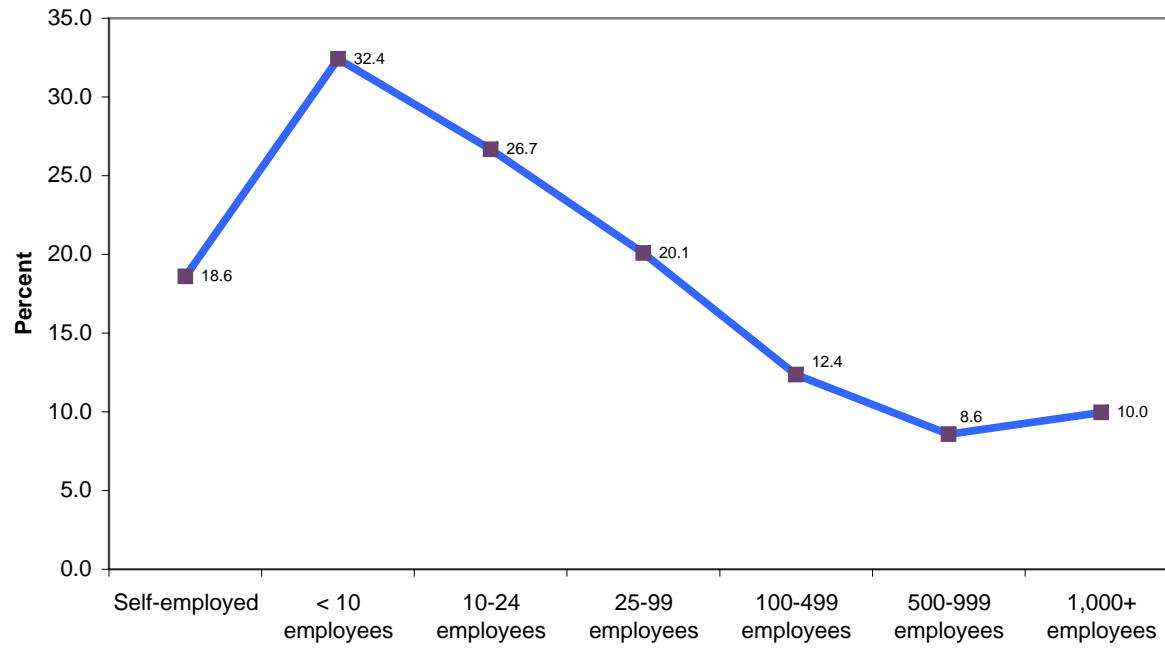


Table 9. Percent Uninsured by Firm Size, New Jersey, 2003-2006

Firm Size (Number of Employees)	Uninsured 2005			Uninsured 2006			Uninsured 2003-2005			Uninsured 2004-2006		
	Total	Number	Percent	Total	Number	Percent	Total	Number	Percent	Total	Number	Percent
Self-employed	374157	70309	18.79	407991	67635	16.6	1146708	214678	18.72	1189482	221123	18.6
< 10 employees	613754	200514	32.67	511129	152600	29.9	1688948	553363	32.76	1637725	531014	32.4
10-24 employees	470486	132777	28.22	476791	143069	30.0	1345937	320598	23.8	1366874	364606	26.7
25-99 employees	638737	126578	19.82	668772	134317	20.1	1805744	318793	17.65	1857263	373076	20.1
100-499 employees	636221	63143	9.92	630636	84955	13.5	1869659	210570	11.92	1905672	235563	12.4
500-999 employees	240039	19032	7.93	198155	6095.2	3.1	810001	86762	10.7	732565	62896	8.6
1,000+ employees	1815137	197737	10.89	1777982	150638	8.5	5186916	531893	10.3	5305580	528202	10.0

Source: Current Population Survey: Annual Demographic File, 2004-2007, Bureau of the Census

Figure 9. Percent Uninsured by Firm Size, New Jersey, 2006



**Table 10. Percent Uninsured by Child and Parents' Nativity and Citizenship,
New Jersey Residents Under 19 Years 2003-2006**

		2005	2006	2003-2005	2004-2005	2005-2006	2004-2006
Child and Parent are Native Born							
	n	124,088	172,208	429,951	275,926	294380	443035
	%	7.5	11.2	8.4	8.1	9.2	9.0
Child Native Born, Parent FB Citizen							
	n	25,535	17,574	81,978	53,780	43109	71354
	%	11.4	6.6	11.8	11.7	8.8	9.8
Child Native Born, Parent FB Non-Citizen							
	n	54,351	33,938	130,039	91,967	90205	131004
	%	21.4	14.2	20.7	20.8	18.2	19.0
Child and Parent are FB Citizens							
	n	3,407	6,247	7,895	6,611	9654.1	12858
	%	25.2	52.7	15.6	19.1	38.1	27.7
Child is FB Non-Citizen, Parent is FB Citizen							
	n	3,100	17,856	15,950	11,843	20956	29700
	%	15.8	63.2	34.2	31.4	43.7	45.0
Child and Parent are FB Non-Citizens							
	n	45,656	22,052	119,729	82,721	67708	104773
	%	46.6	42.5	42.0	43.8	45.2	43.5

*Source: Current Population Survey: Annual Demographic File, 2004-2007, Bureau of the Census
Estimates based on weighted data.*

**Table 11. Percent Uninsured by Ratio of Income to FPL,
New Jersey Residents Aged 19-64 years 2003-2006**

Income to FPL

		2003	2004	2005	2006	2003-2005	2004-2006
<1.00	n	192,227	197,916	154,702	224,060	544,845	576,678
	%	47.3%	46.3%	44.1%	53.7%	46.0%	48.0%
	Total	406,455	427,317	351,125	417,452	1,184,897	1,195,894
1.00-1.99	n	224,114	270,571	227,625	198,638	722,310	696,834
	%	38.2%	44.2%	40.4%	38.3%	41.0%	41.0%
	Total	586,404	611,462	563,925	518,370	1,761,791	1,693,757
2.00+	n	568,211	568,211	649,776	587,753	1,786,198	1,805,740
	%	13.3%	13.3%	14.6%	13.3%	13.7%	13.7%
	Total	4,277,030	4,277,030	4,446,543	4,409,285	13,000,603	13,132,858

Note: Estimates based on weighted data

Source: Current Population Survey: Annual Demographic File, 2004-2007, Bureau of the Census

Table 12. Unweighted Frequencies

Age	2002	2003	2004	2005	2006
< 18 years	1,736	1,747	1515	1358	1371
19 - 64 years	3,337	3,301	2855	2620	2680
65+ years	565	510	466	439	466
Total	5,638	5,558	4,836	4,417	4517
Race/Ethnicity					
Non-Hispanic White	3,574	3,413	3012	2526	2548
Non-Hispanic Black	696	747	577	554	526
Hispanic	949	963	878	982	940
American Indian	17	12	13	17	17
Asian/Pacific Islander	340	375	313	293	442
Non-Hispanic Other	13	7	43	45	44
Total	5,589	5,517	4,836	4,417	4517
<i>Source: Current Population Survey: Annual Demographic File, 2003-2007, Bureau of the Census</i>					