

Exhibit A: Highlands Master Plan Overlay Zone Designation



Regional Master Plan Overlay Zone Designation

Zone

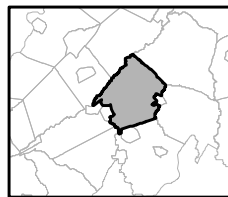
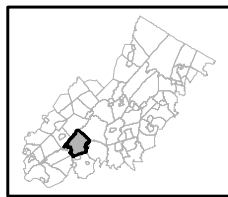
- Protection
- Conservation
- Existing Community

Sub-Zone

- Existing Community Environmentally Constrained
- Conservation Environmentally Constrained
- Lake Community
- Wildlife Management

- Lakes Greater Than 10 acres
- Preservation Area
- Municipal Boundaries

Lebanon Township

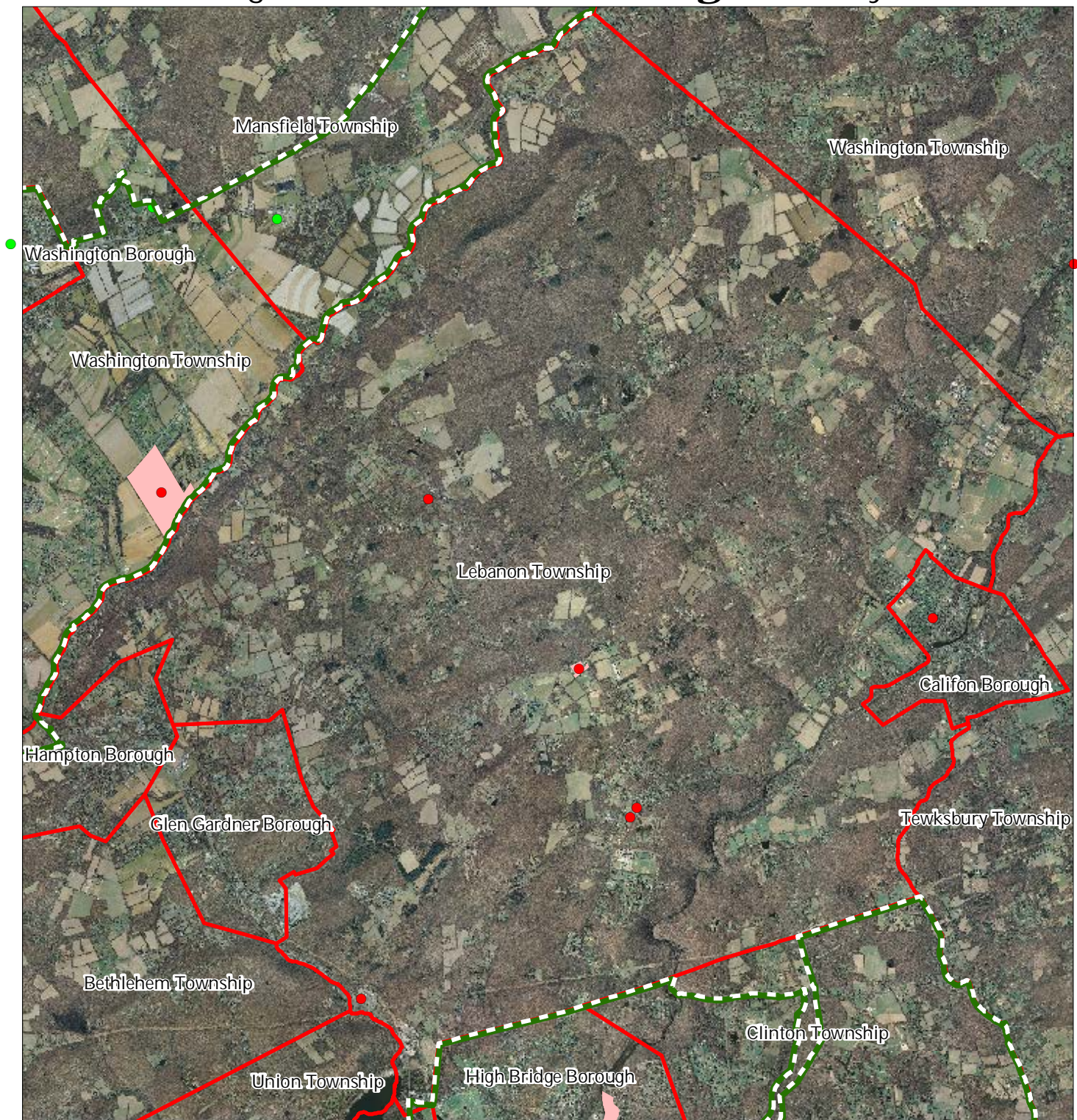


1 inch = 0.968 miles



December 2011

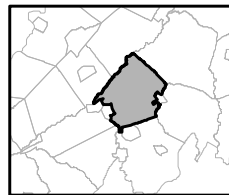
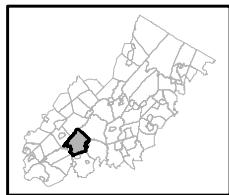
Exhibit C: Highlands Contaminated Site Inventory



Highlands Contaminated Site Inventory

Lebanon Township

- Tier 1 Sites
- Tier 1 Sites (Polygons)
- Tier 2 Sites
- ▬ Preservation Area
- ▬ Municipal Boundaries

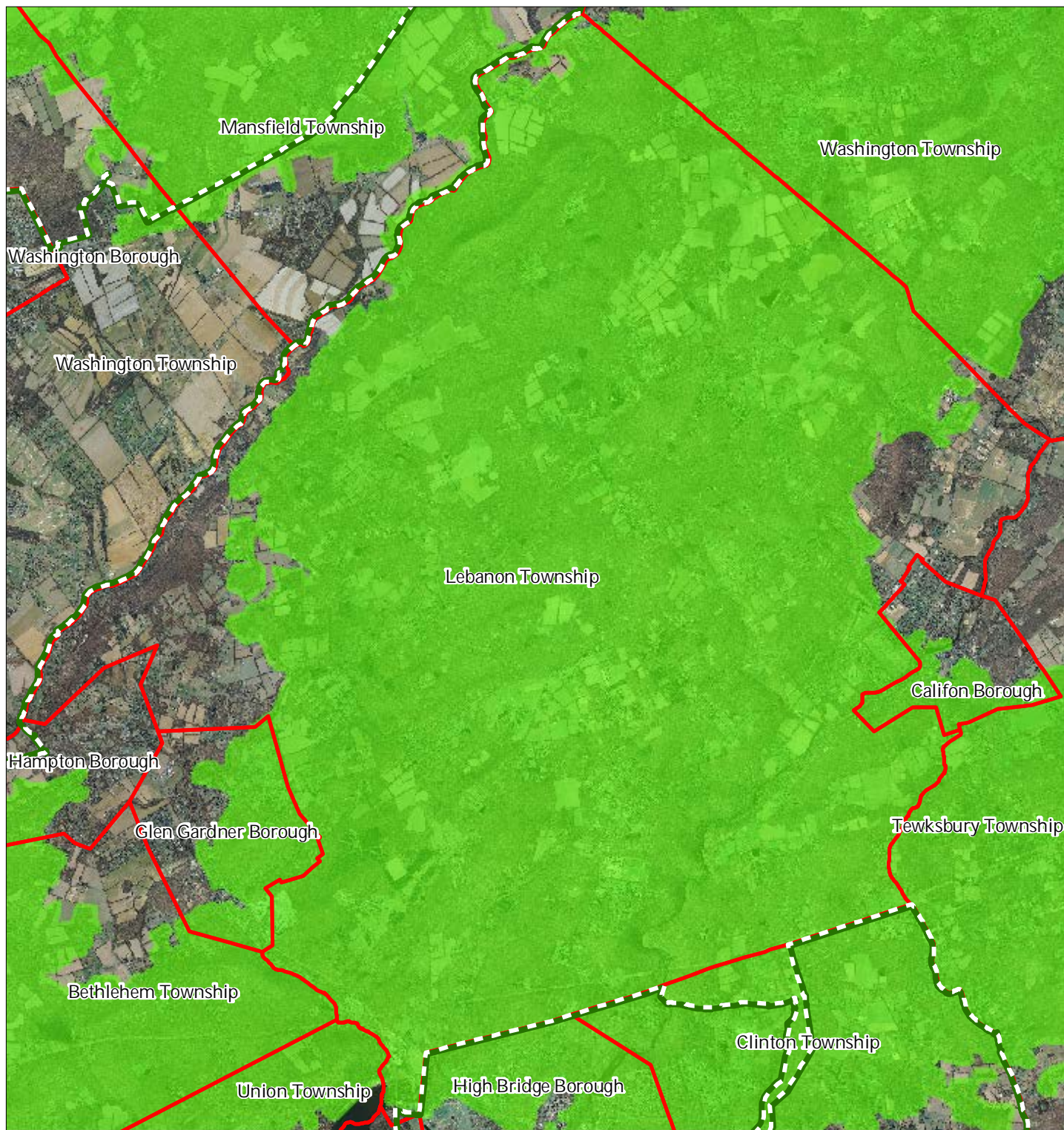





1 inch = 0.968 miles



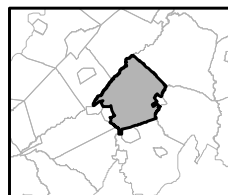
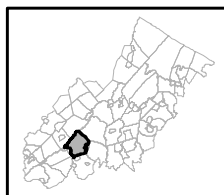
December 2011

Exhibit E: Forest Resource Area



-  Forest Resource Area
-  Preservation Area
-  Municipal Boundaries

Lebanon Township






1 inch = 0.968 miles



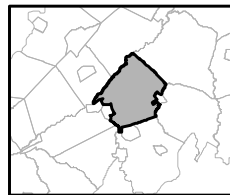
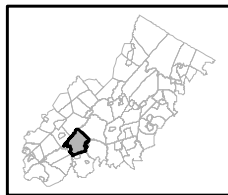
December 2011

Exhibit F: Total Forest Area



-  Forested Areas
-  Preservation Area
-  Municipal Boundaries

Lebanon Township

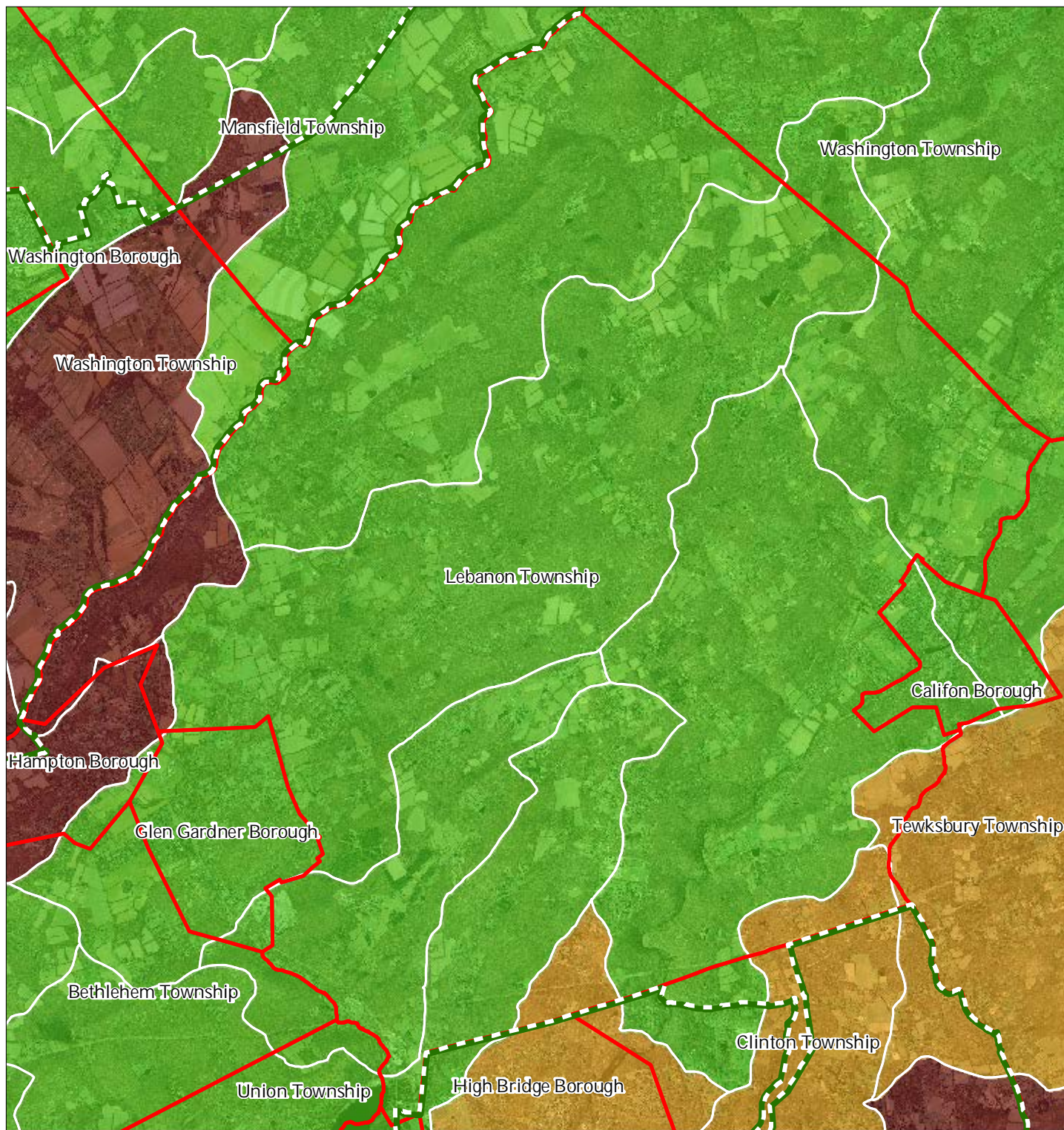


1 inch = 0.968 miles

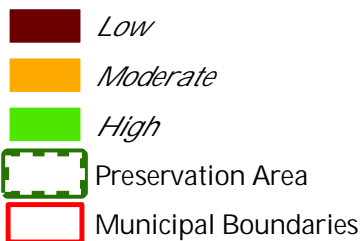


December 2011

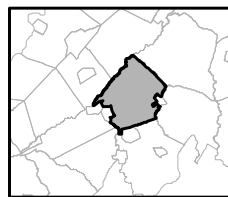
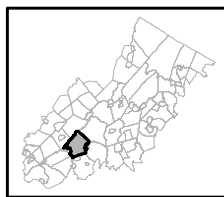
Exhibit G: Forest Subwatersheds



Forest Integrity by HUC14 Subwatershed



Lebanon Township

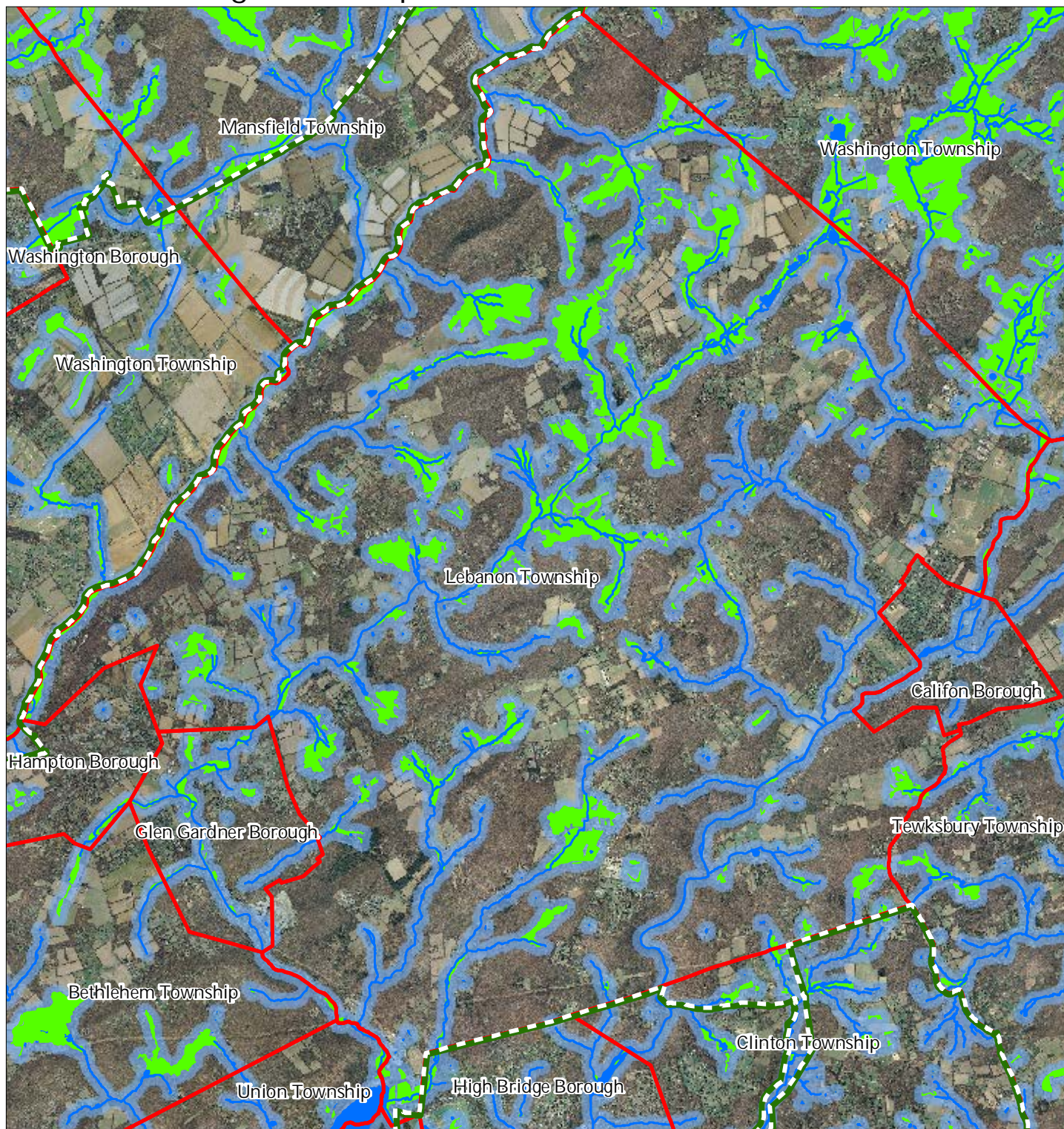


1 inch = 0.968 miles



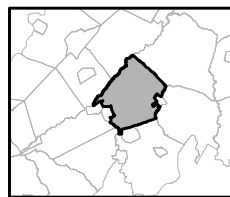
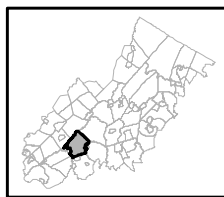
December 2011

Exhibit H: Highlands Open Waters



-  Highlands Open Water Buffers (300ft)
-  Streams
-  Wetlands
-  Lakes & Ponds
-  Preservation Area
-  Municipal Boundaries

Lebanon Township

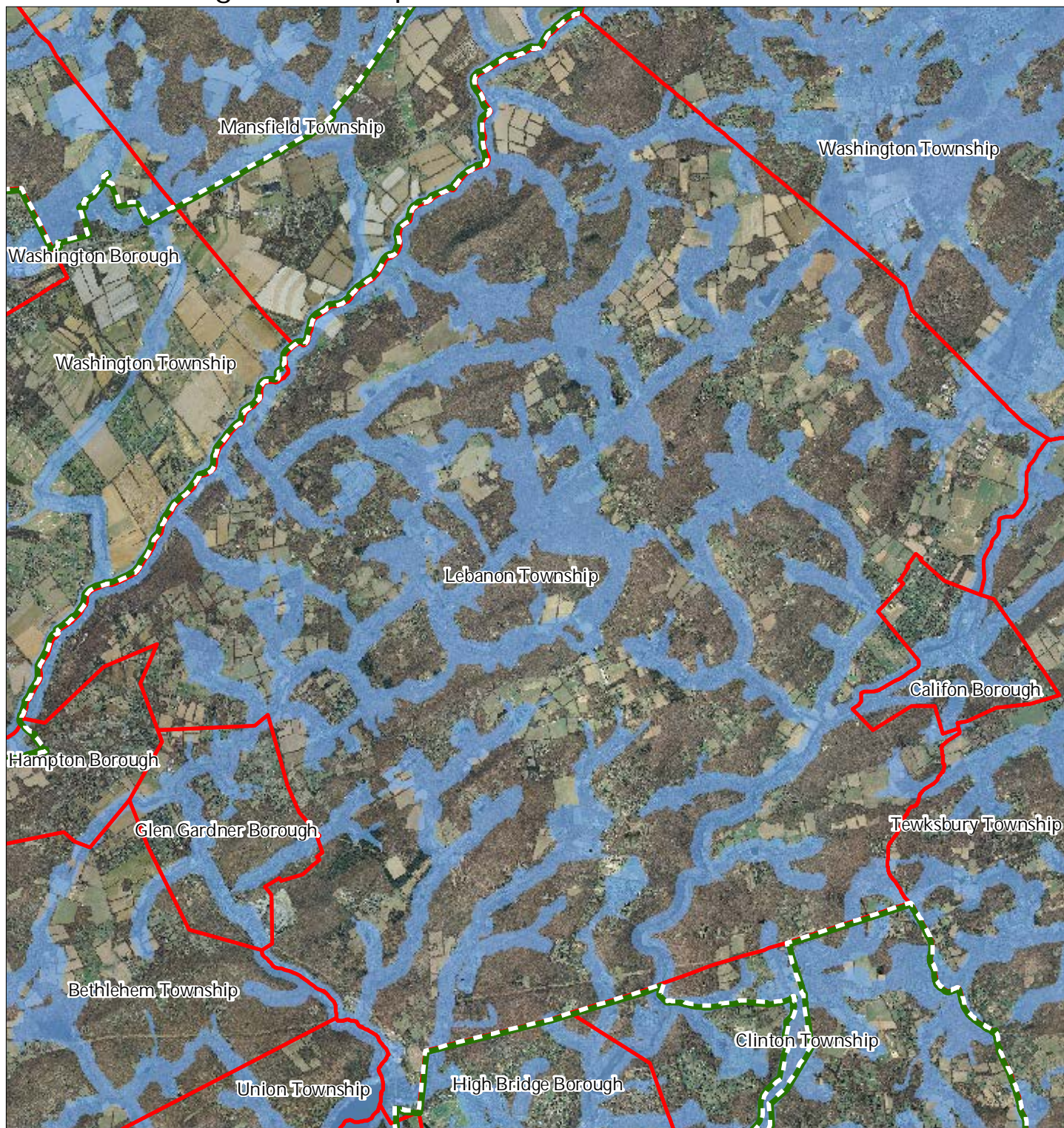





1 inch = 0.968 miles



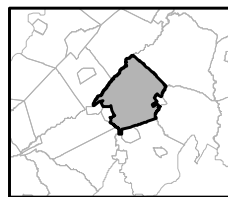
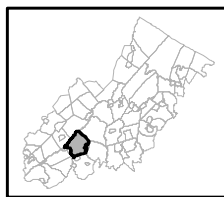
December 2011

Exhibit I: Highlands Riparian Areas



-  Riparian Area
-  Preservation Area
-  Municipal Boundaries

Lebanon Township

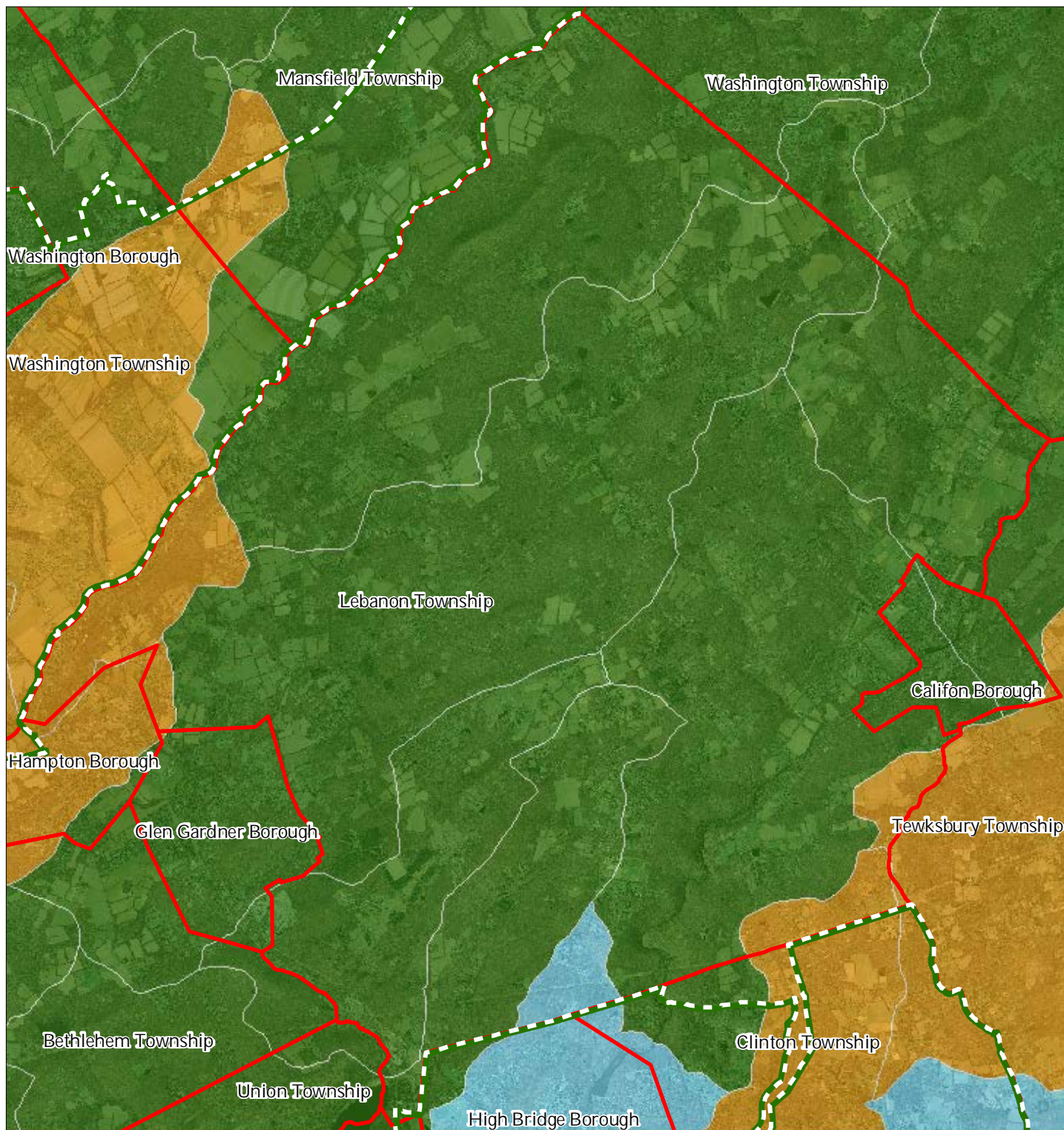


1 inch = 0.968 miles

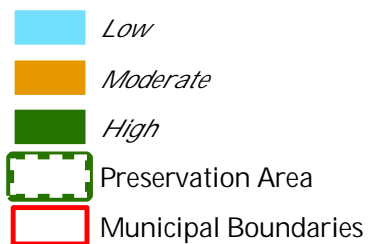


December 2011

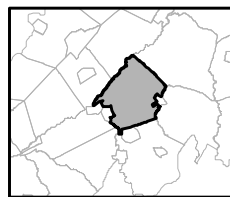
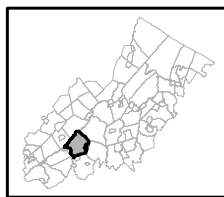
Exhibit J: Watershed Values



Watershed Values by HUC14 Subwatershed



Lebanon Township

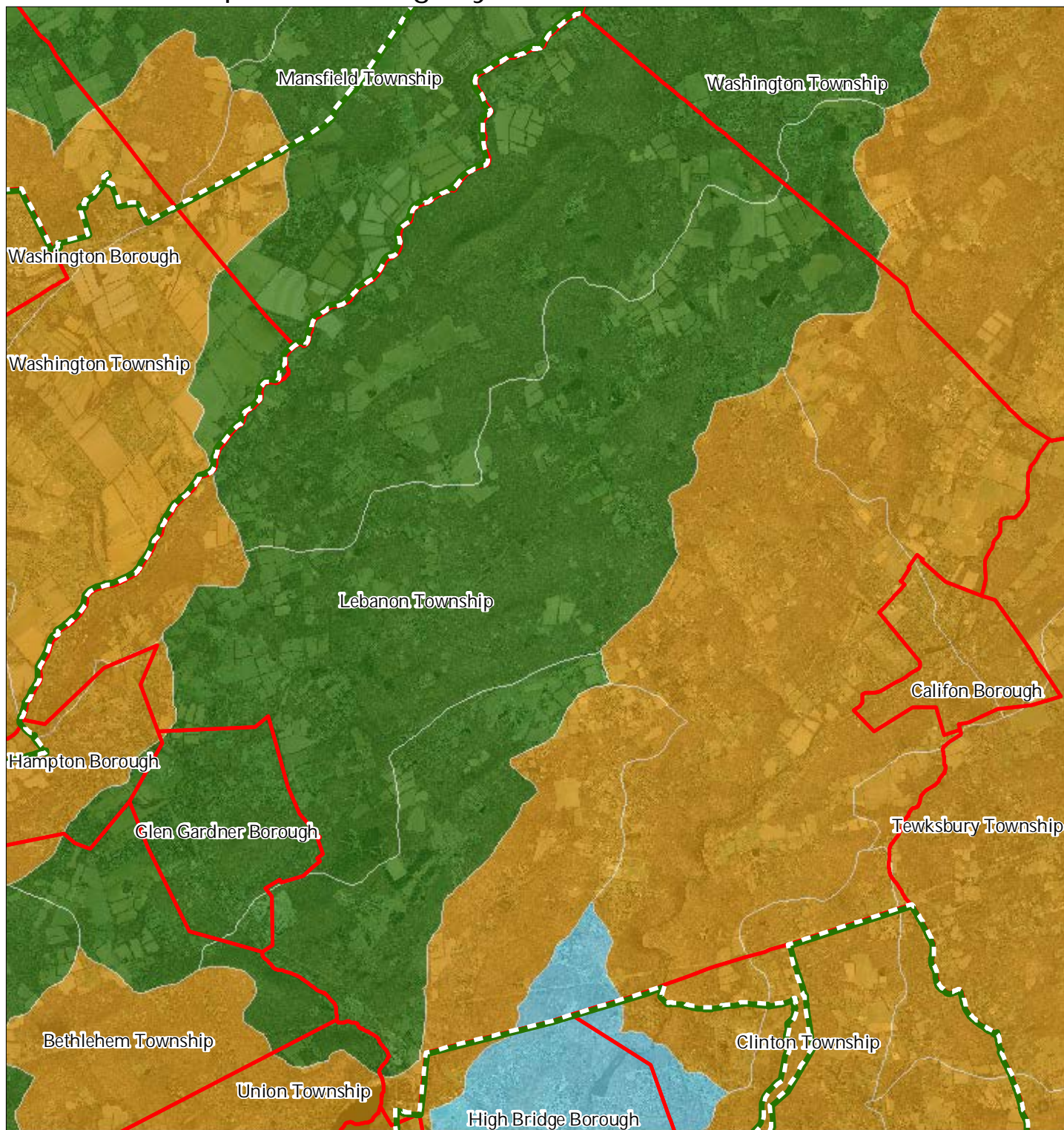


1 inch = 0.968 miles

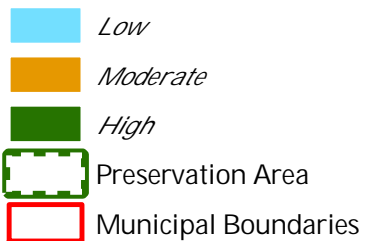


December 2011

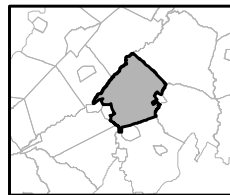
Exhibit K: Riparian Integrity



Riparian Integrity by HUC14 Subwatershed



Lebanon Township

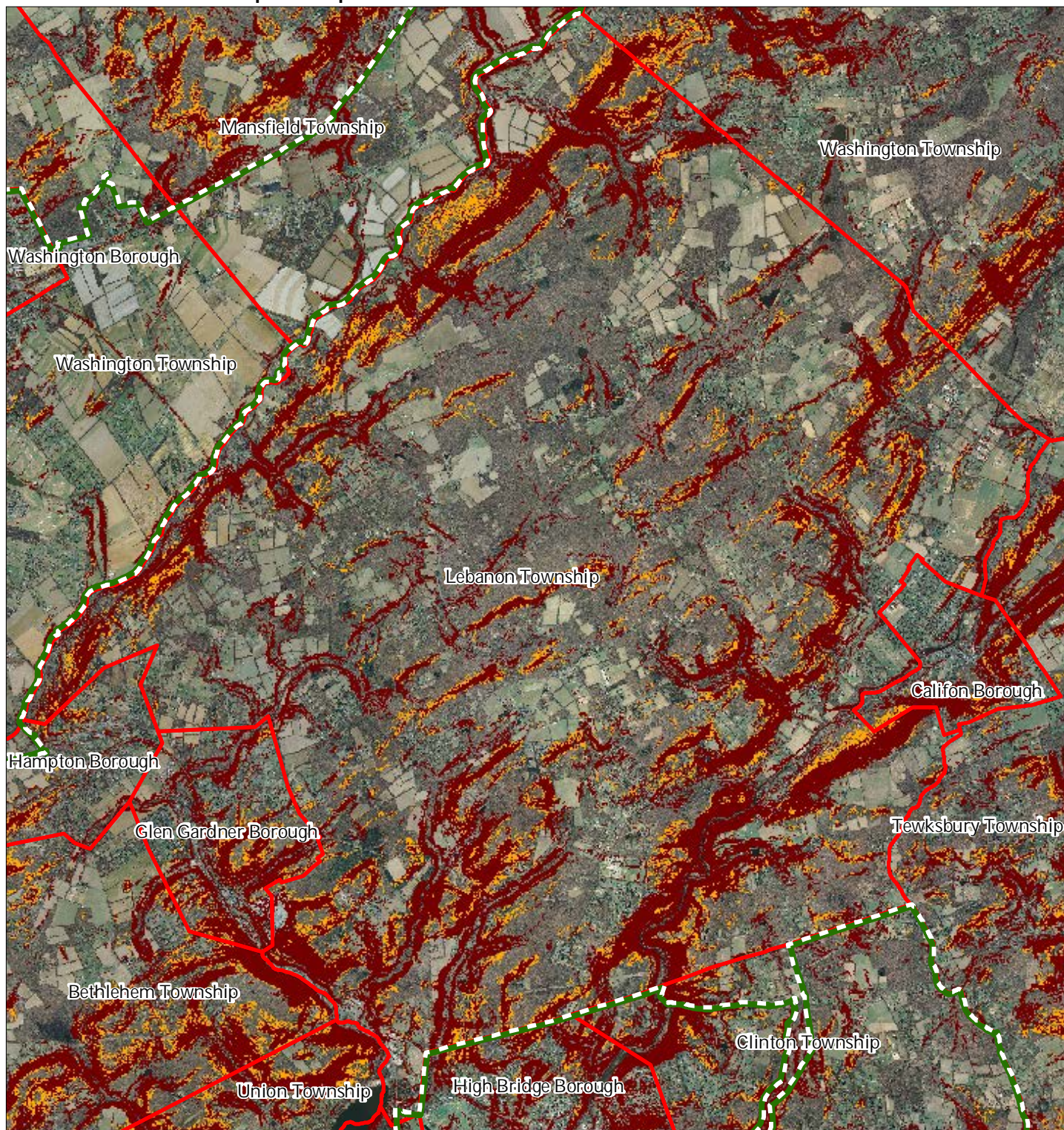


1 inch = 0.968 miles







December 2011

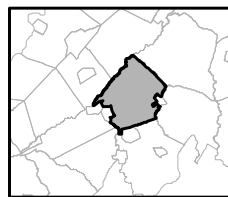
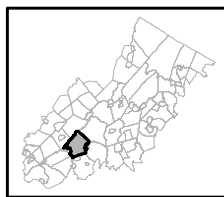
Exhibit L: Steep Slope Protection Areas



Steep Slopes

-  Moderate
-  Severe
-  Preservation Area
-  Municipal Boundaries

Lebanon Township






1 inch = 0.968 miles



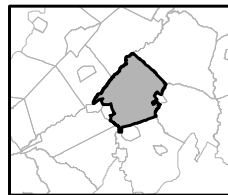
December 2011

Exhibit M: Critical Wildlife Habitat



-  Critical Wildlife Habitat
-  Preservation Area
-  Municipal Boundaries

Lebanon Township

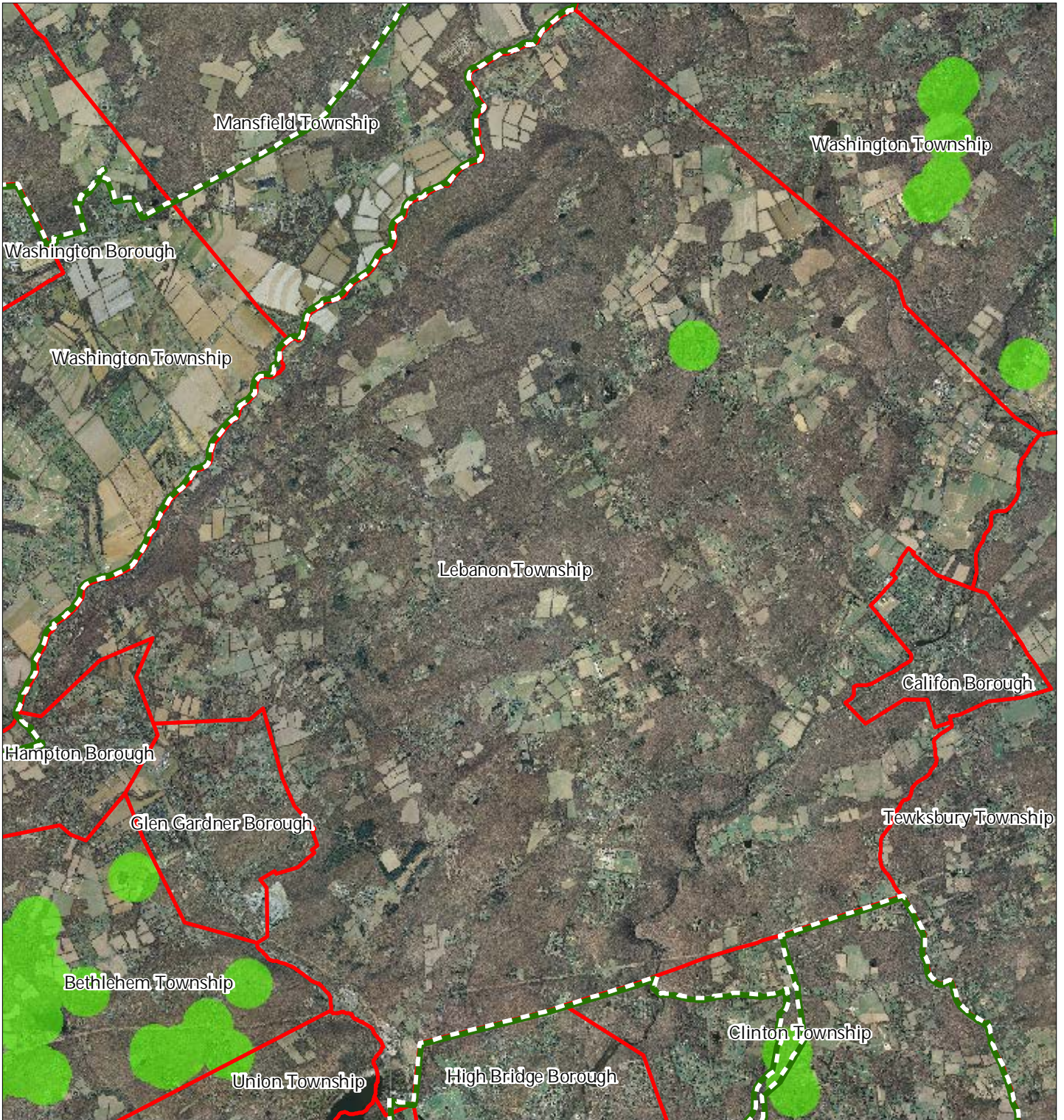





1 inch = 0.968 miles



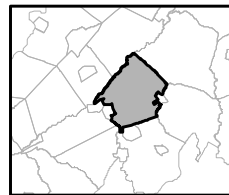
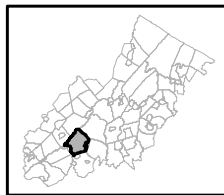
December 2011

Exhibit O: Vernal Pools



-  Vernal Pools + 1000ft Buffer
-  Preservation Area
-  Municipal Boundaries

Lebanon Township

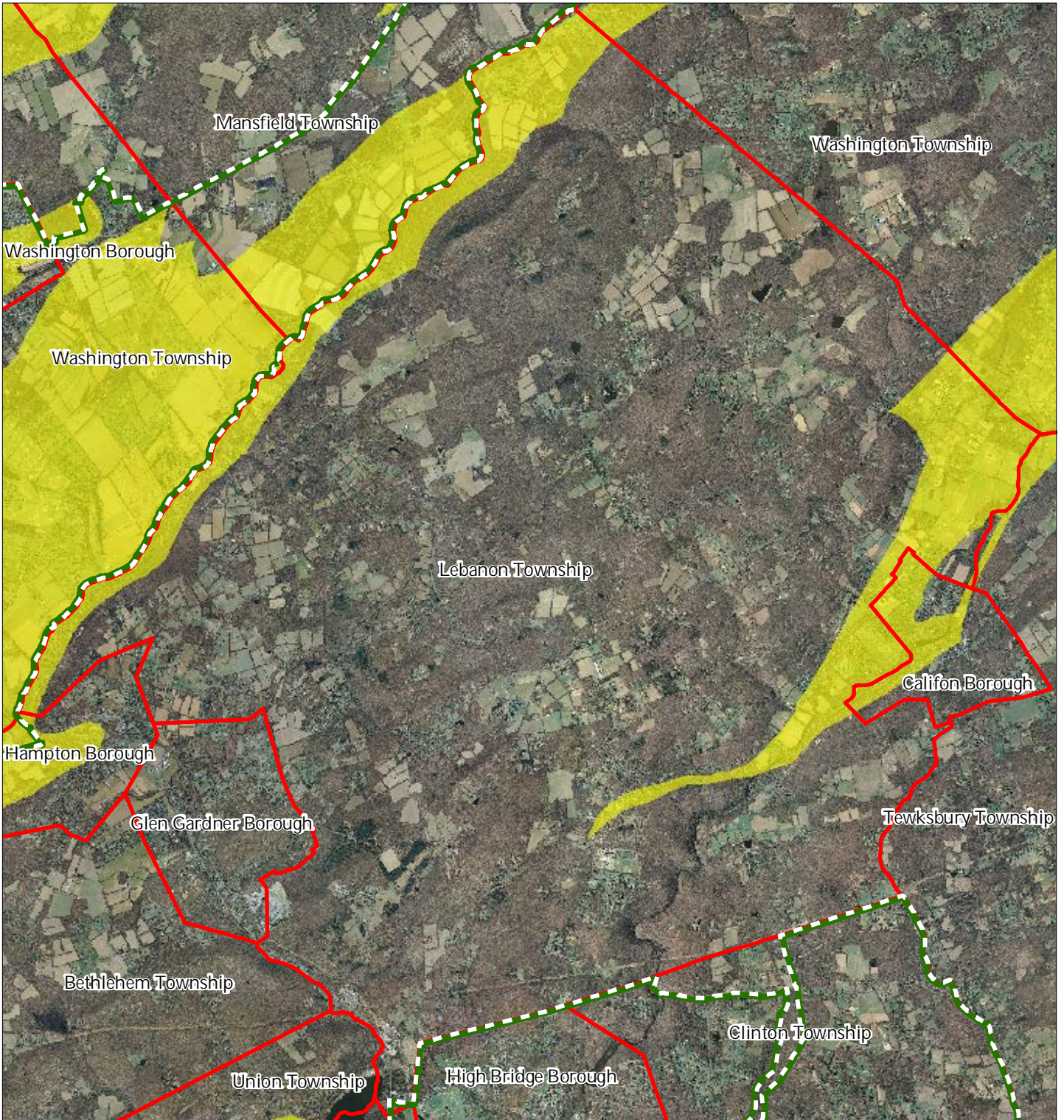





1 inch = 0.968 miles



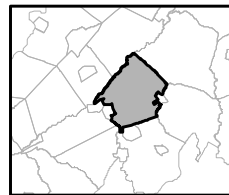
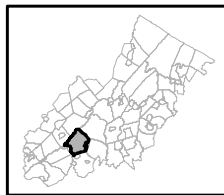
December 2011

Exhibit P: Carbonate Rock Areas



-  Carbonate Rock Area
-  Preservation Area
-  Municipal Boundaries

Lebanon Township

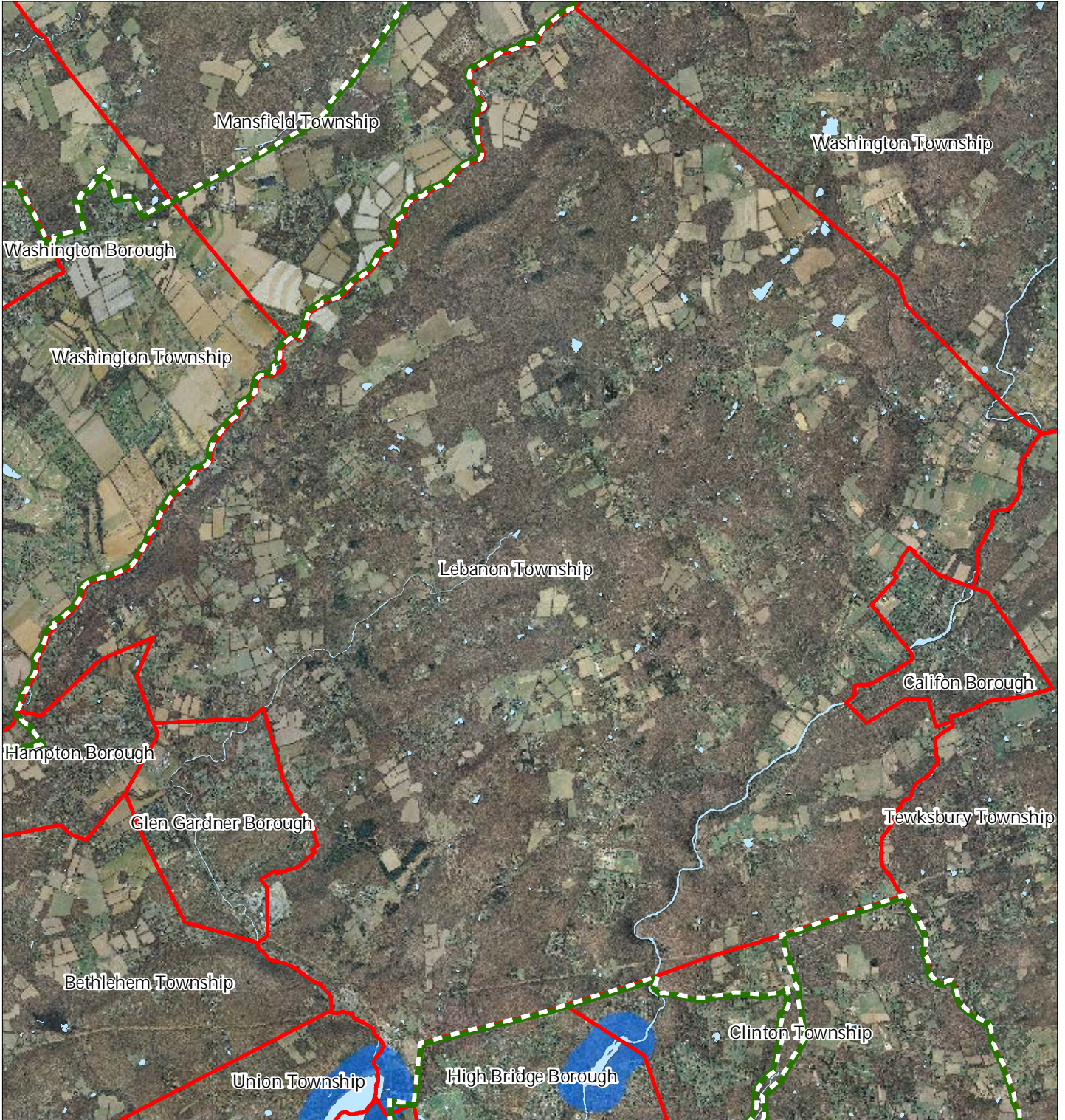


1 inch = 0.968 miles



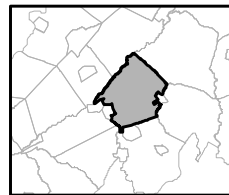
December 2011

Exhibit Q: Lake Management Area



- Lakes & Ponds
- Lake Management Area
- Preservation Area
- Municipal Boundaries

Lebanon Township

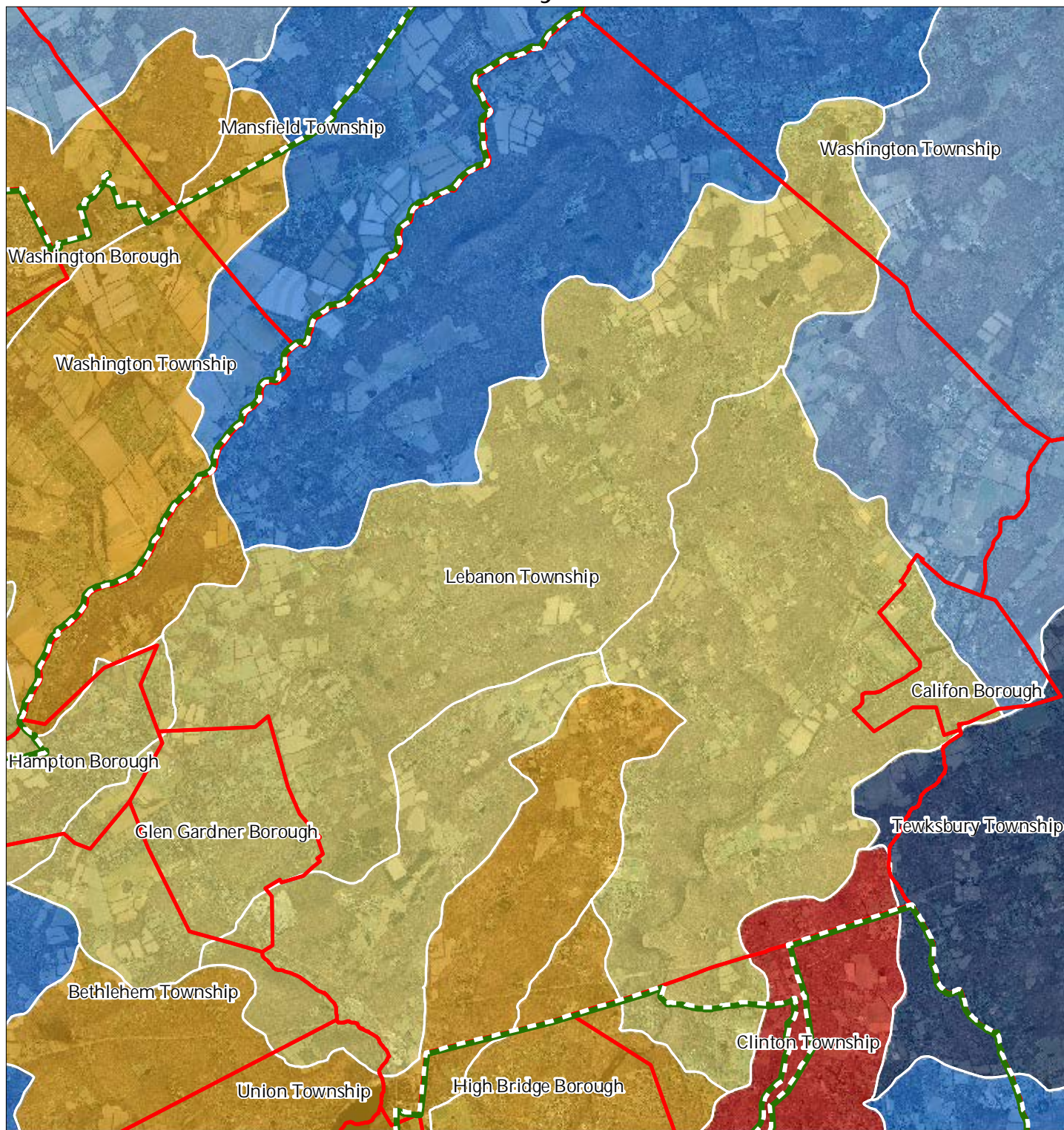


1 inch = 0.968 miles

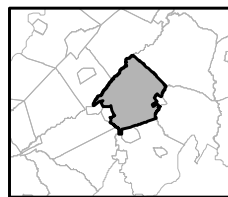
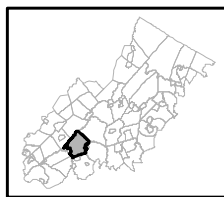


December 2011

Exhibit R: Net Water Availability



Lebanon Township

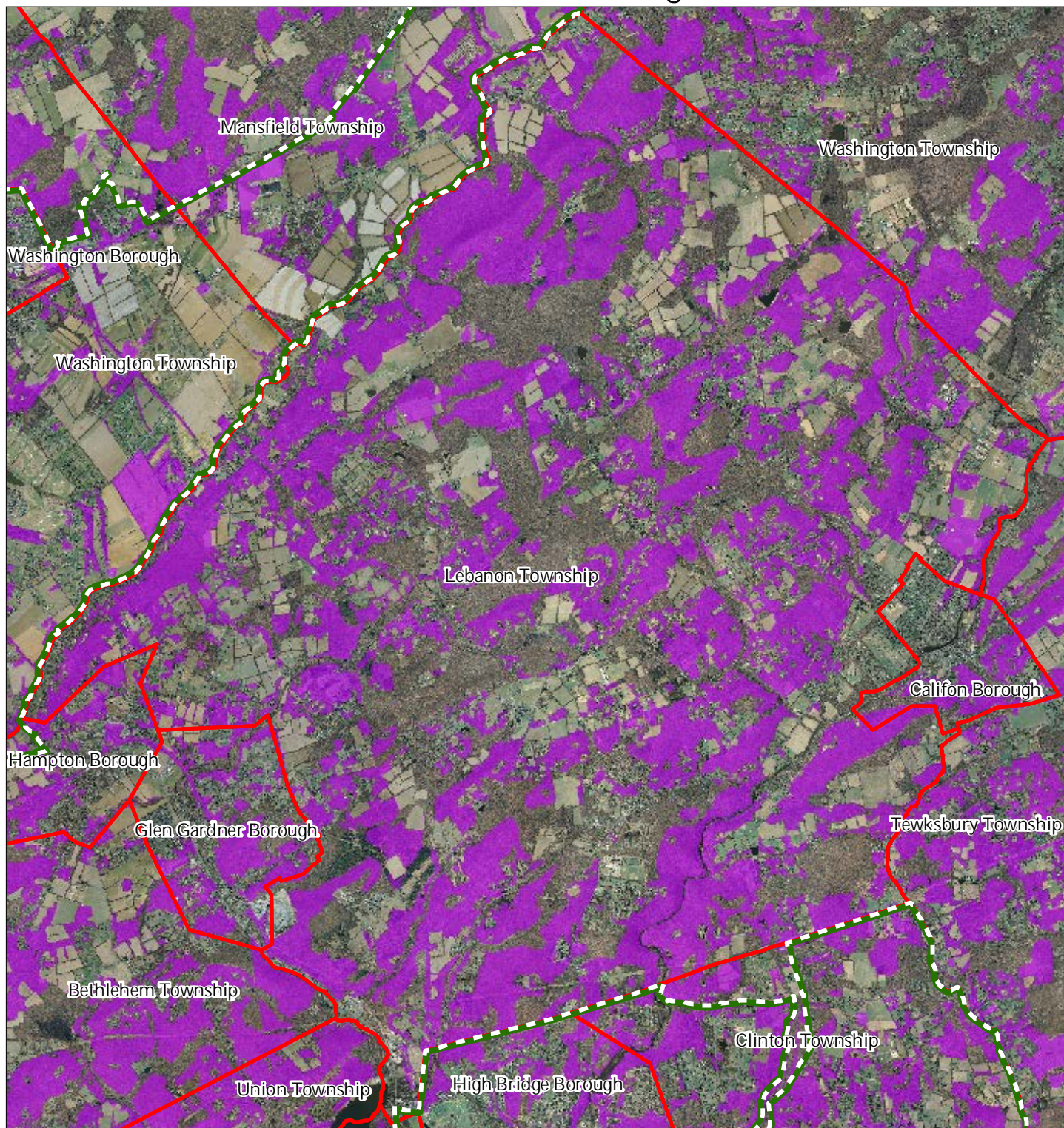





1 inch = 0.968 miles



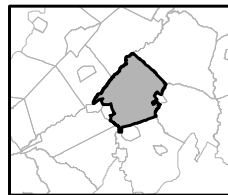
December 2011

Exhibit S: Prime Ground Water Recharge Areas



-  Prime Groundwater Recharge Areas
-  Preservation Area
-  Municipal Boundaries

Lebanon Township

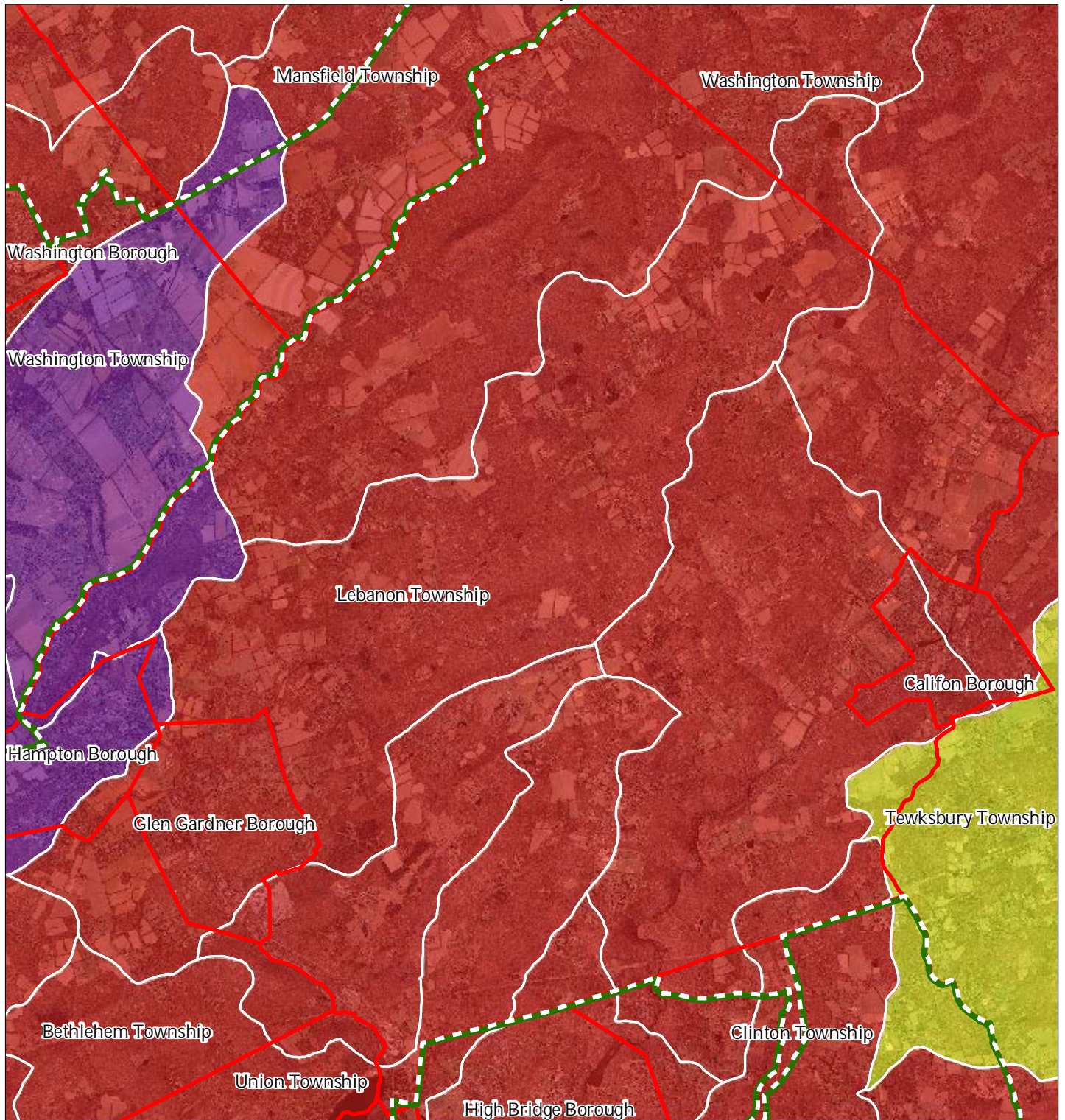


1 inch = 0.968 miles



December 2011

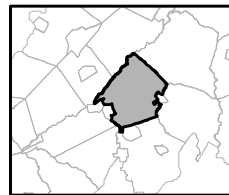
Exhibit T: HUC 14s on NJDEP Impaired Waters List



Impaired Waters Overall Assessment by HUC14 Subwatershed

- Non Impacted*
- Insufficient Data Available*
- Moderate*
- Water Quality Impaired*
- Preservation Area
- Municipal Boundaries

Lebanon Township

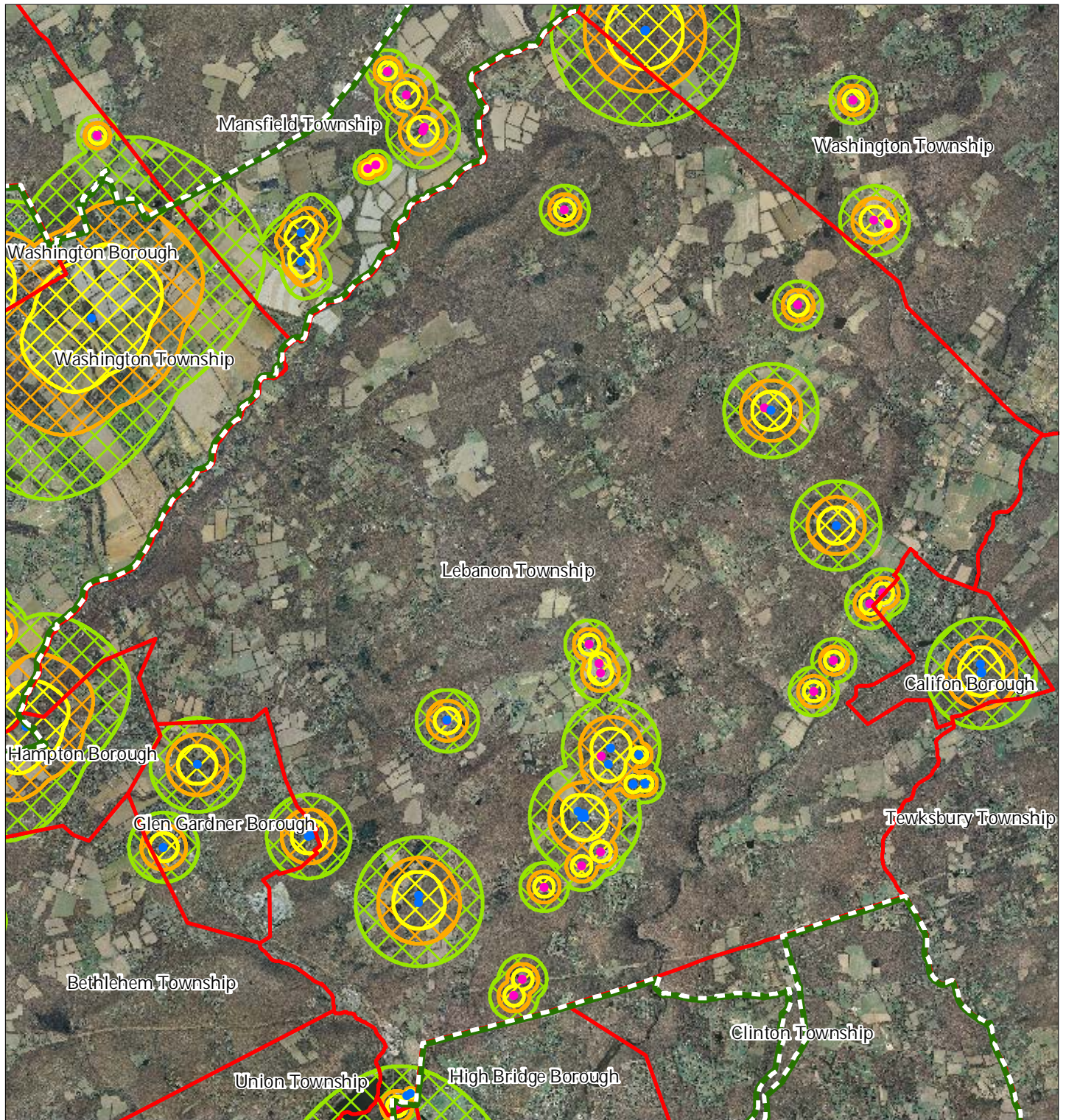


1 inch = 0.968 miles



December 2011

Exhibit U: Wellhead Protection Areas



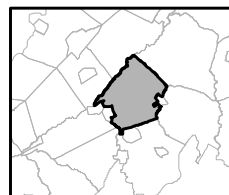
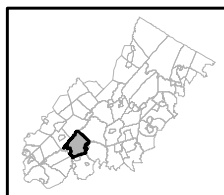
- Public Community Wells
- Public Non-Community Wells

Wellhead Protection Areas

- 2-Year Tier
- 5-Year Tier
- 12-Year Tier

- Preservation Area
- Municipal Boundaries

Lebanon Township

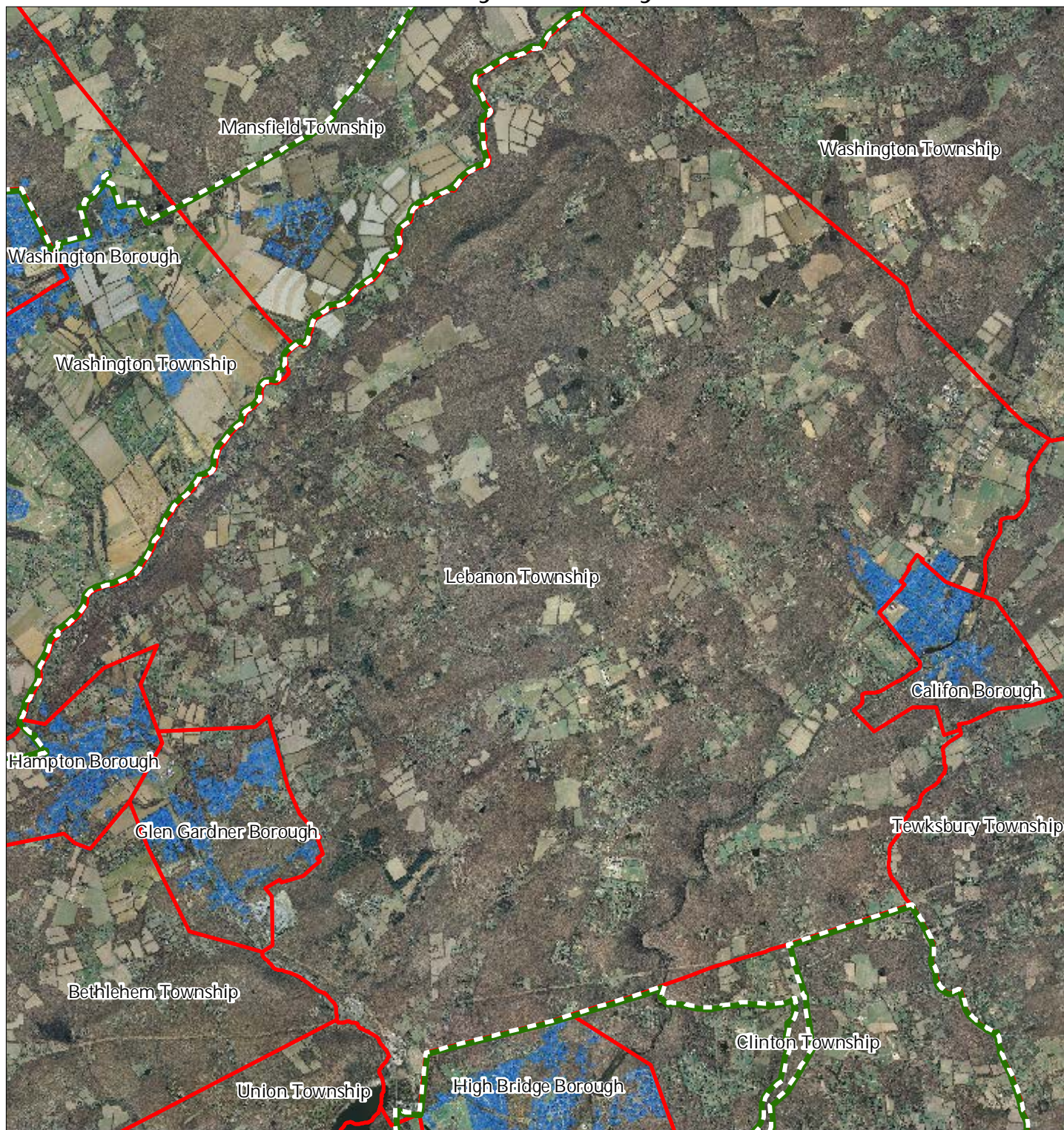





1 inch = 0.968 miles



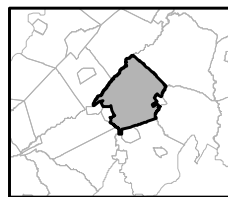
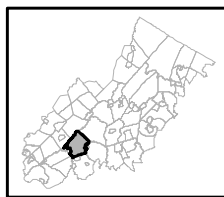
December 2011

Exhibit V: Public Community Water Systems



-  Public Community Water Systems
-  Preservation Area
-  Municipal Boundaries

Lebanon Township

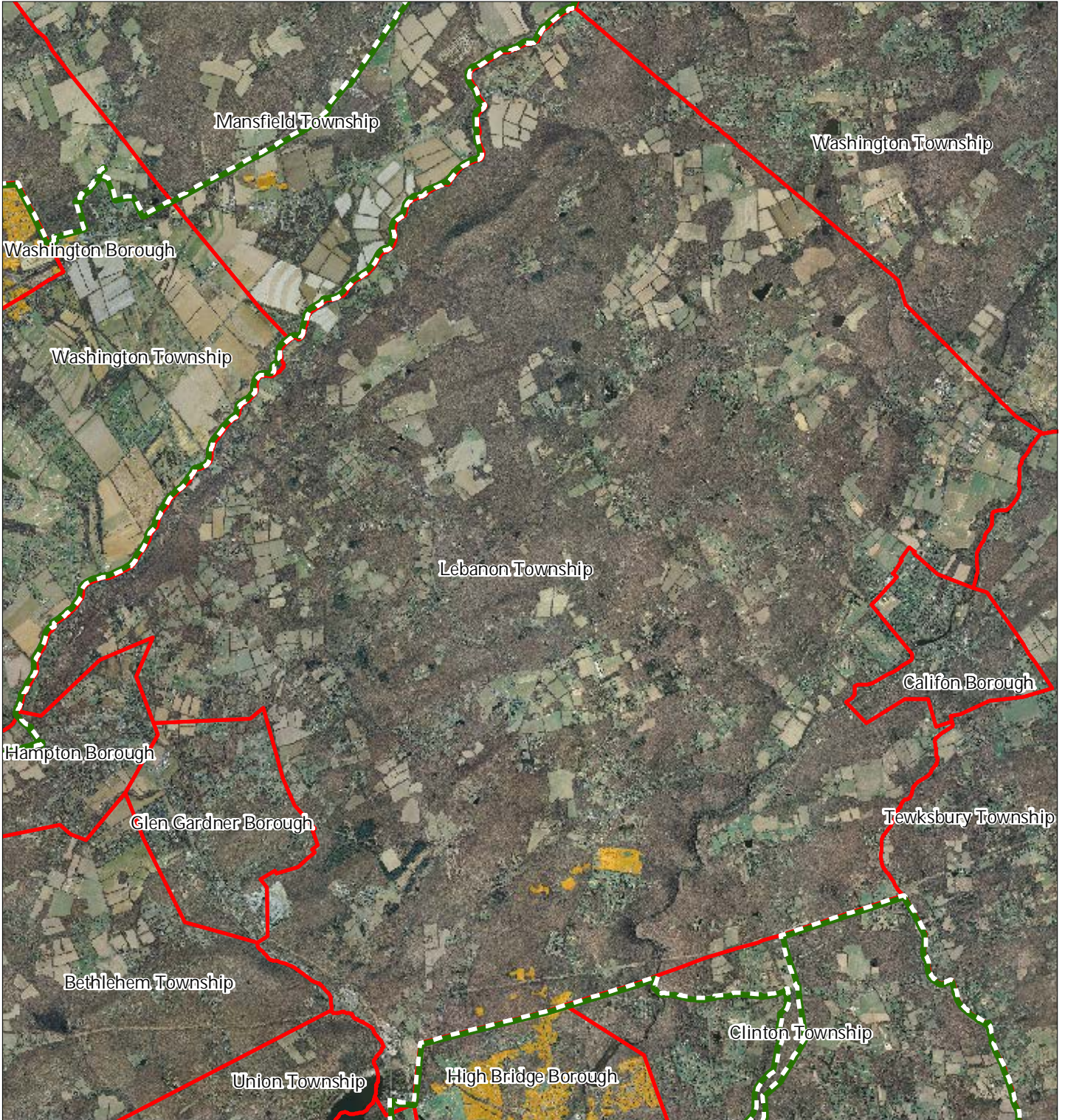


1 inch = 0.968 miles






December 2011

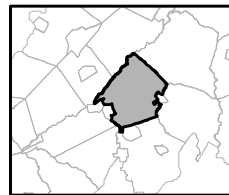
Exhibit W: Highlands Domestic Sewerage Facilities



Highlands Domestic Sewerage Facilities

-  Existing Area Served
-  Preservation Area
-  Municipal Boundaries

Lebanon Township

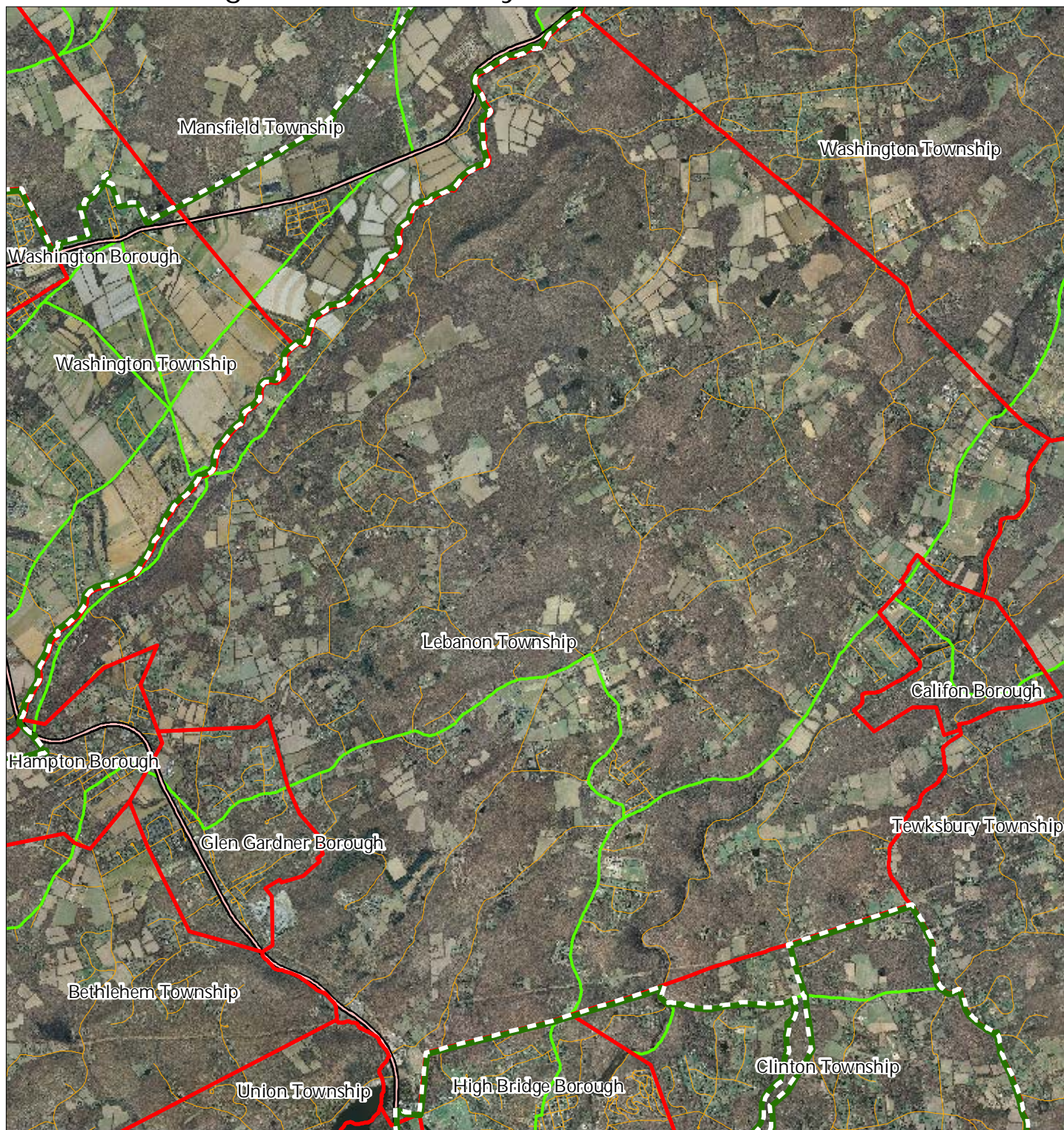


1 inch = 0.968 miles



December 2011

Exhibit Y: Highlands Roadway Network



Roadway Network

 *Interstate Highways*

 *U.S. Routes*

 *State Routes*

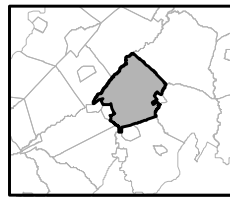
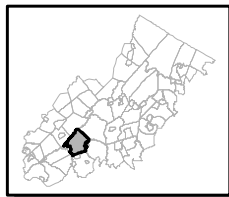
 *County Routes*

 *Local Routes*

 Preservation Area

 Municipal Boundaries

Lebanon Township

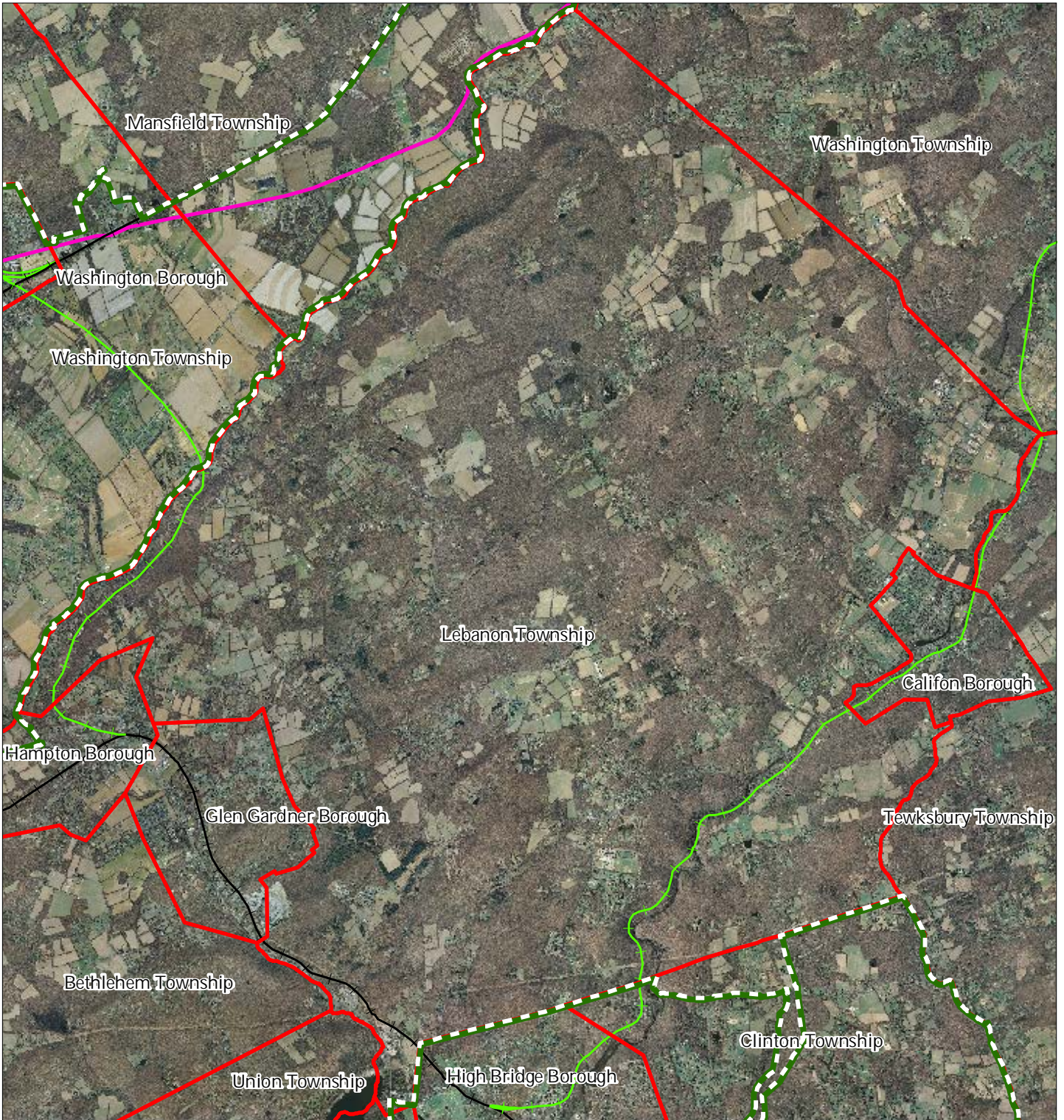


1 inch = 0.968 miles



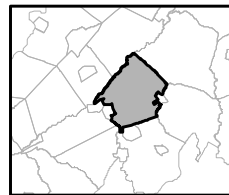
December 2011

Exhibit Z: Highlands Transit Network



- Rail Network**
- *Boonton Line*
 - *Main Line & Bergen County Line*
 - *Morris and Essex Line*
 - *Raritan Valley Line*
 - *Freight Rail Lines*
 - *Abandoned Freight Rail*
- Other Features**
- Rail Stations
 - Park and Ride Sites
 - Private Bus Lines
 - NJ Transit Bus Lines
 - ✈ Airports

Lebanon Township

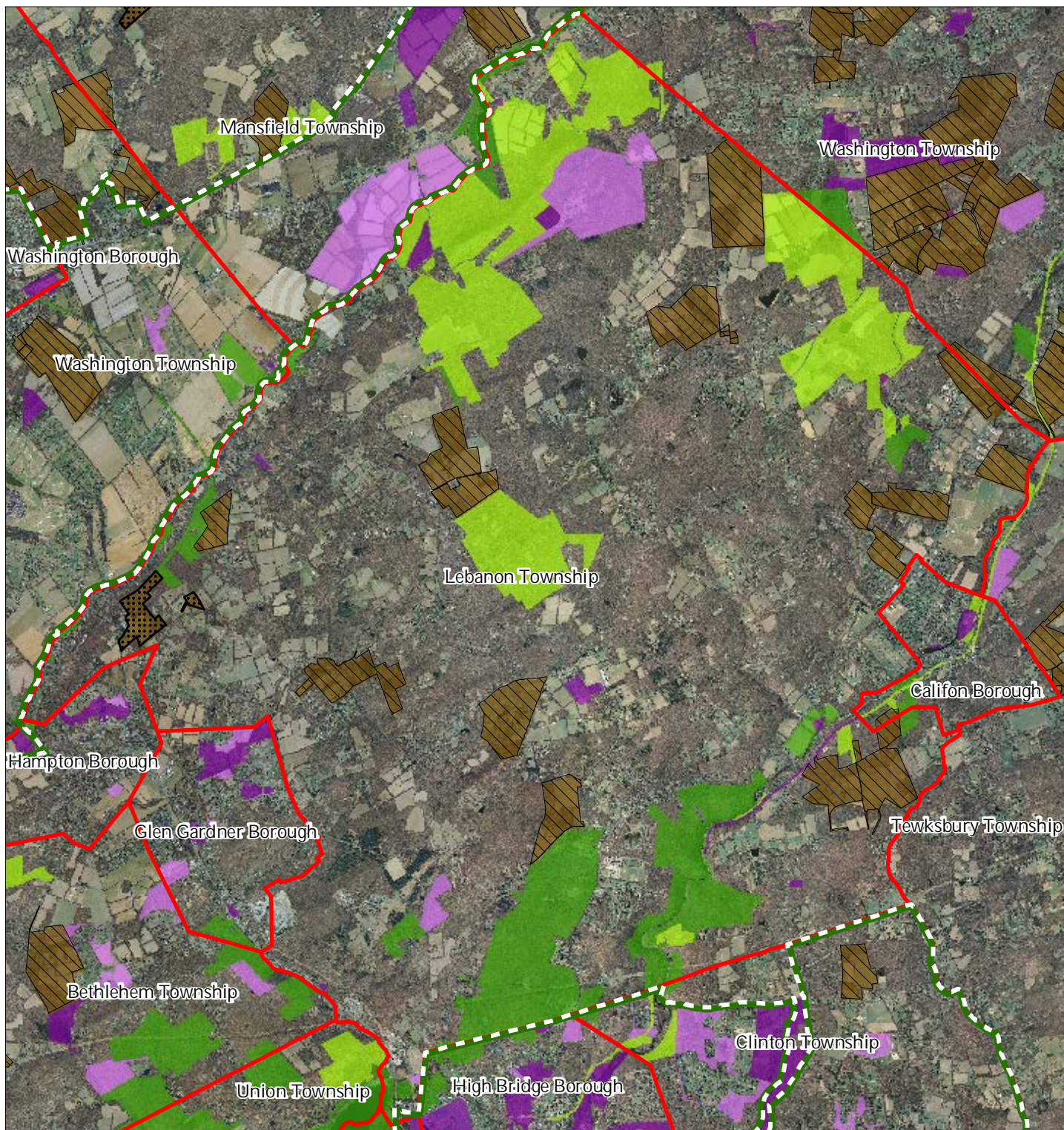


1 inch = 0.968 miles



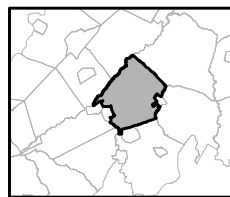
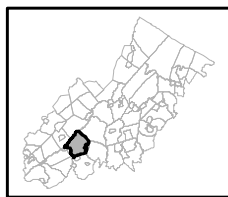
December 2011

Exhibit AA: Preserved Lands



Preserved Lands	Conservation Easements
Federal Open Space	Green Acres
State Open Space	SADC Easements
County Open Space	SADC Final
Municipal Open Space	SADC Preserved
Non-Profit/Private Open Space	Municipal Boundaries
Water Supply Watershed Lands	Preservation Area
Preserved Farmland	
Highlands Transfer of Development Lands	

Lebanon Township

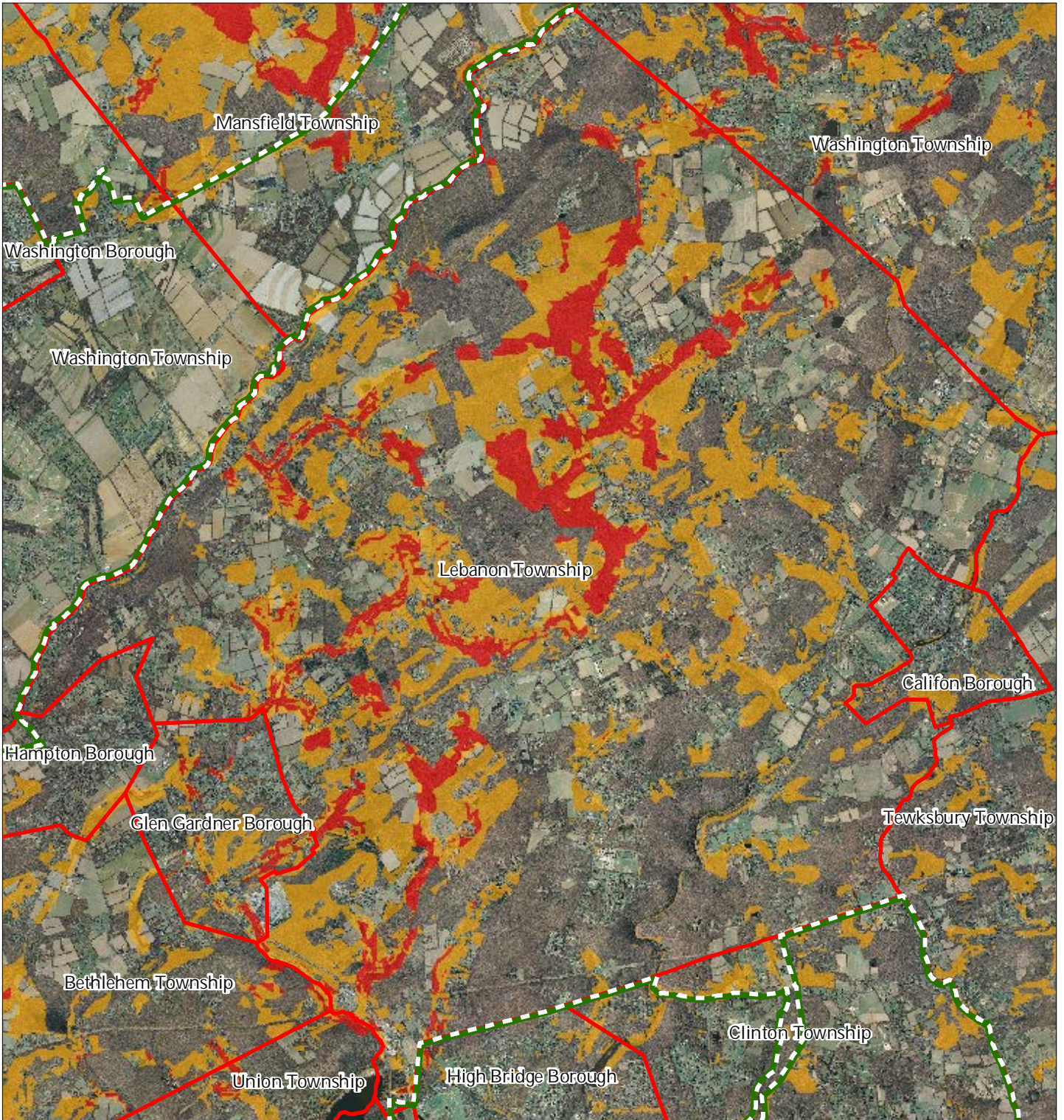


1 inch = 0.968 miles







December 2011

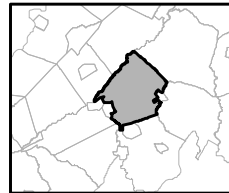
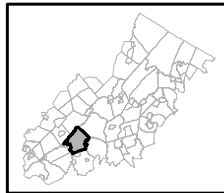
Exhibit BB: Highlands Conservation Priority Areas



Conservation Priority Area

-  Moderate
-  High
-  Preservation Area
-  Municipal Boundaries

Lebanon Township

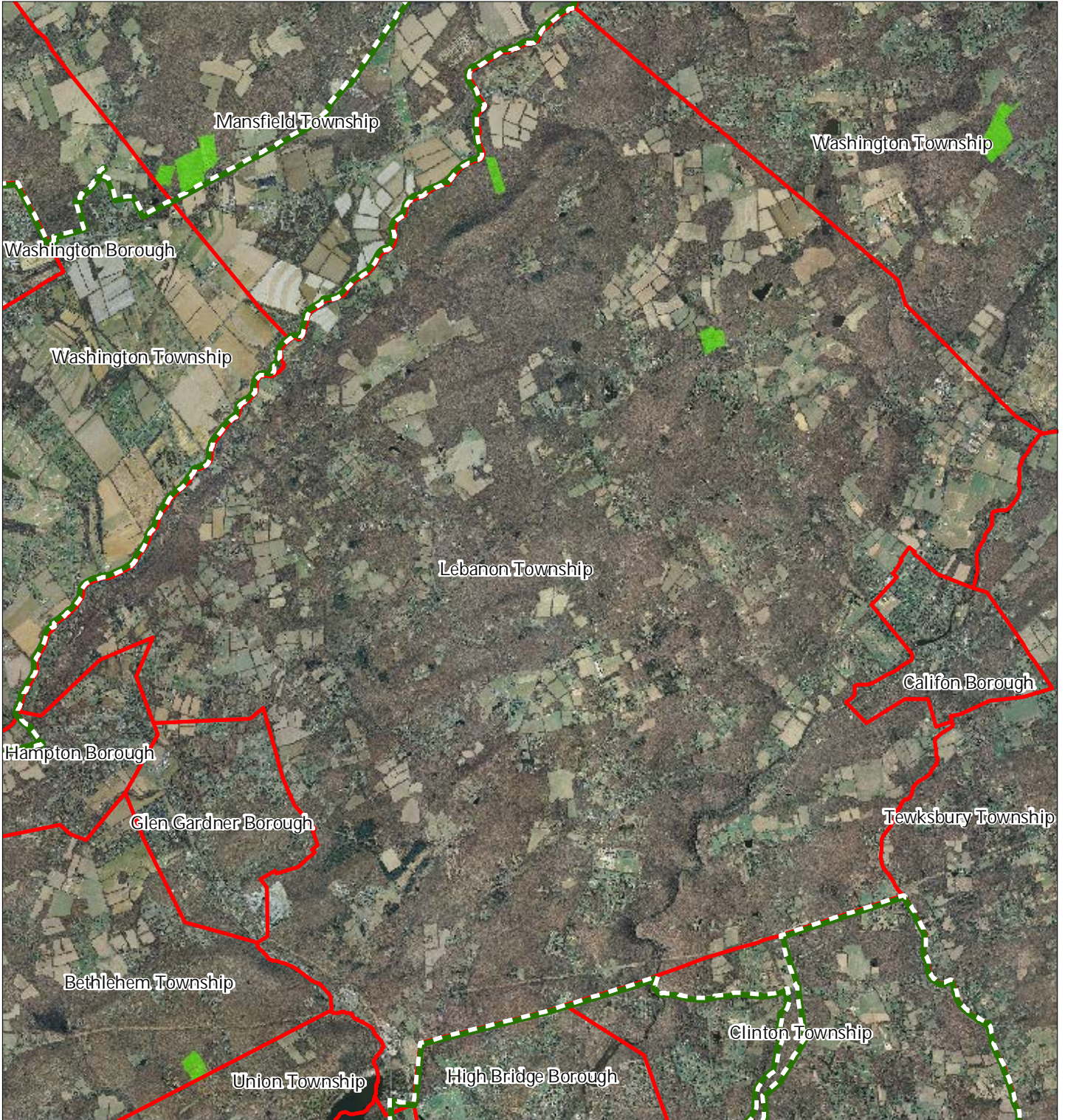





1 inch = 0.968 miles



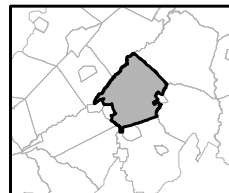
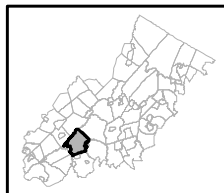
December 2011

Exhibit CC: Highlands Special Environmental Zone



-  Special Environmental Zones
-  Preservation Area
-  Municipal Boundaries

Lebanon Township

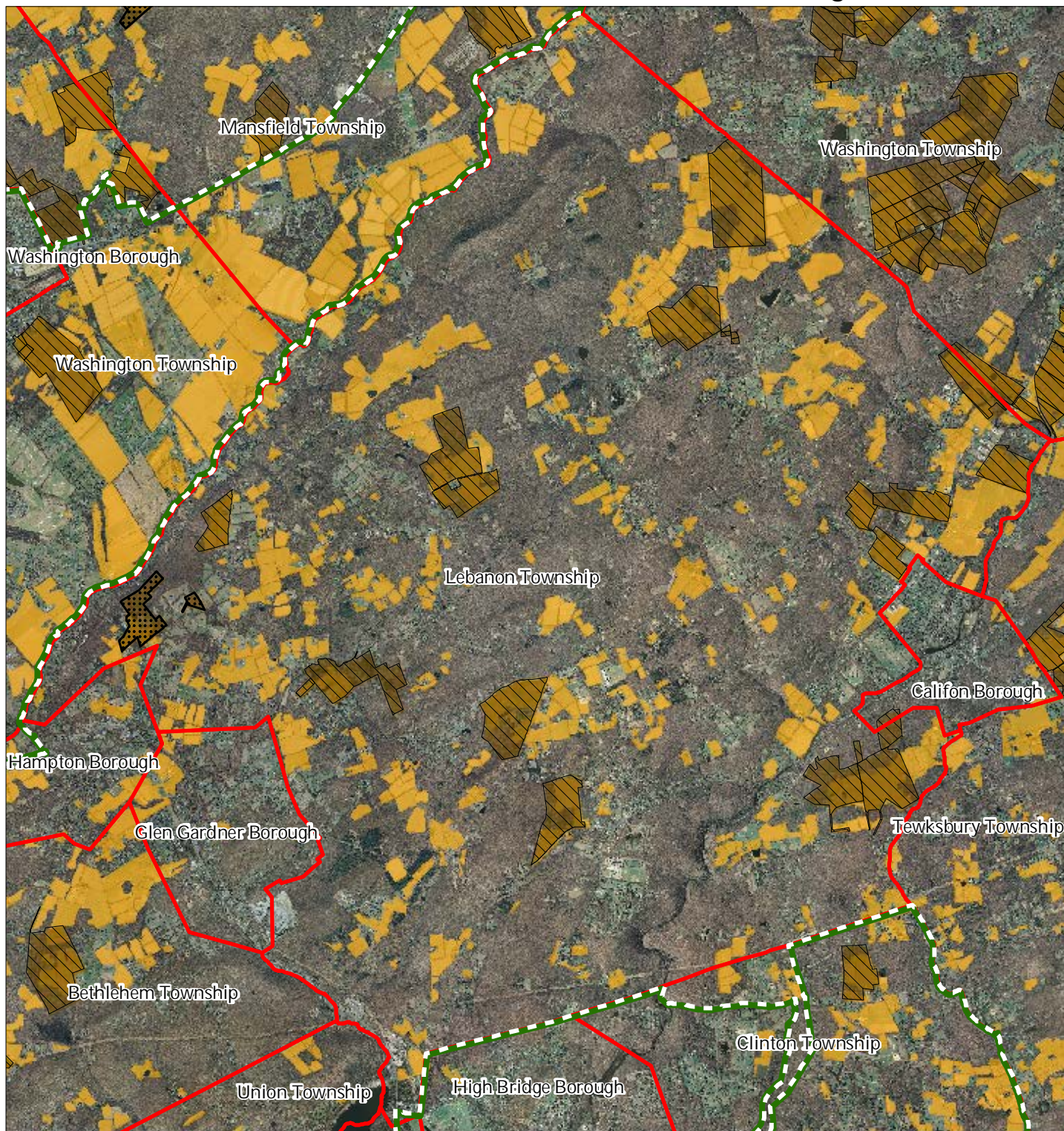


1 inch = 0.968 miles



December 2011

Exhibit DD: Preserved Farms, SADC Easements, All Agricultural Uses



SADC Easements



SADC Final



SADC Preserved



Preserved Farmland



Agriculture Uses

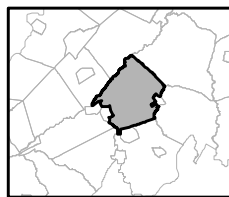
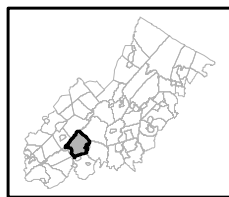


Preservation Area



Municipal Boundaries

Lebanon Township

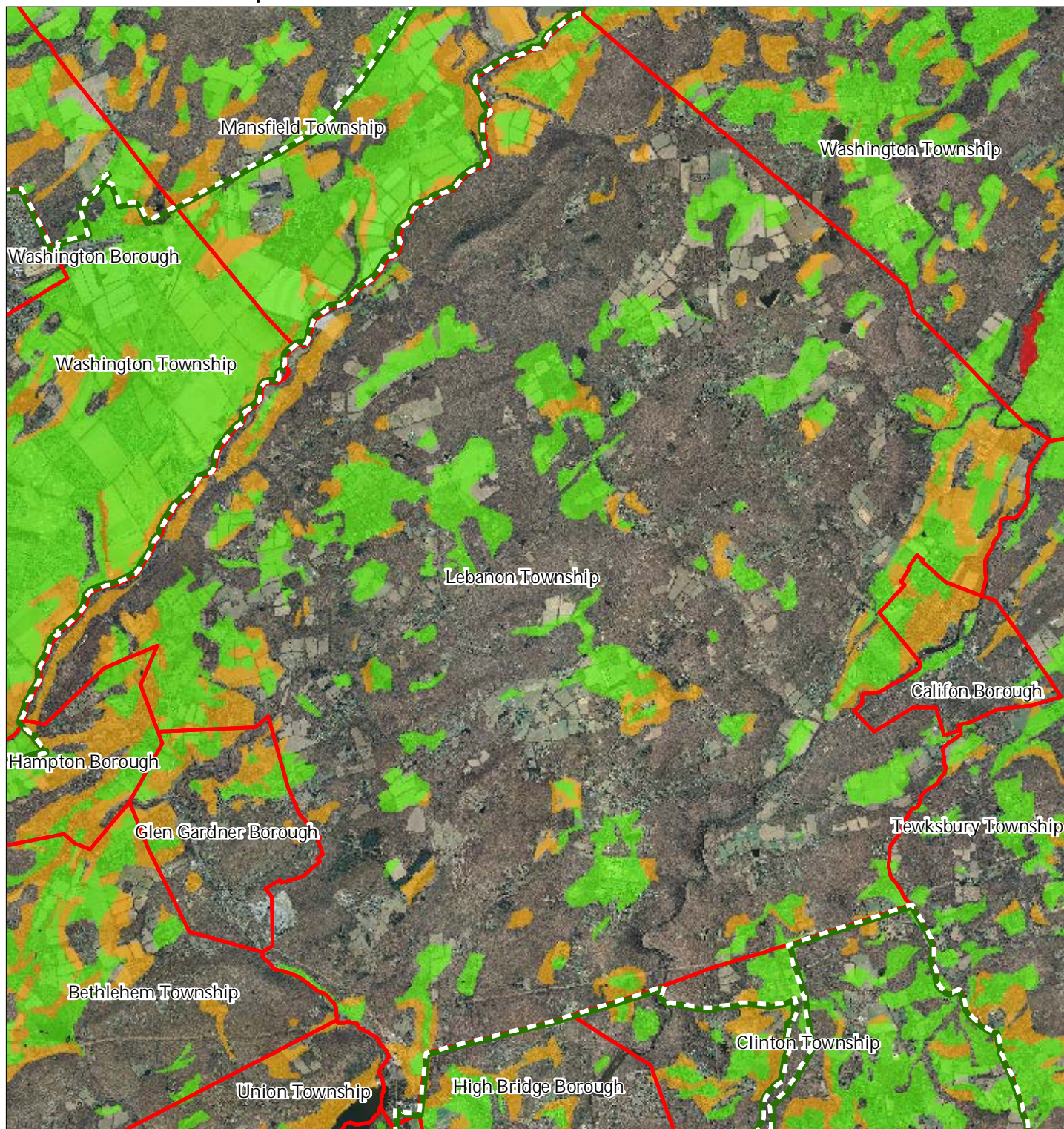


1 inch = 0.968 miles



December 2011

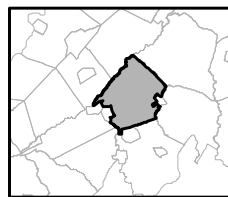
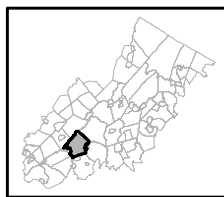
Exhibit EE: Important Farmland Soils



Important Farmland Soils

- Prime Farmland
- Farmland of Local Importance
- Farmland of Statewide Importance
- Farmland of Unique Importance
- Preservation Area
- Municipal Boundaries

Lebanon Township

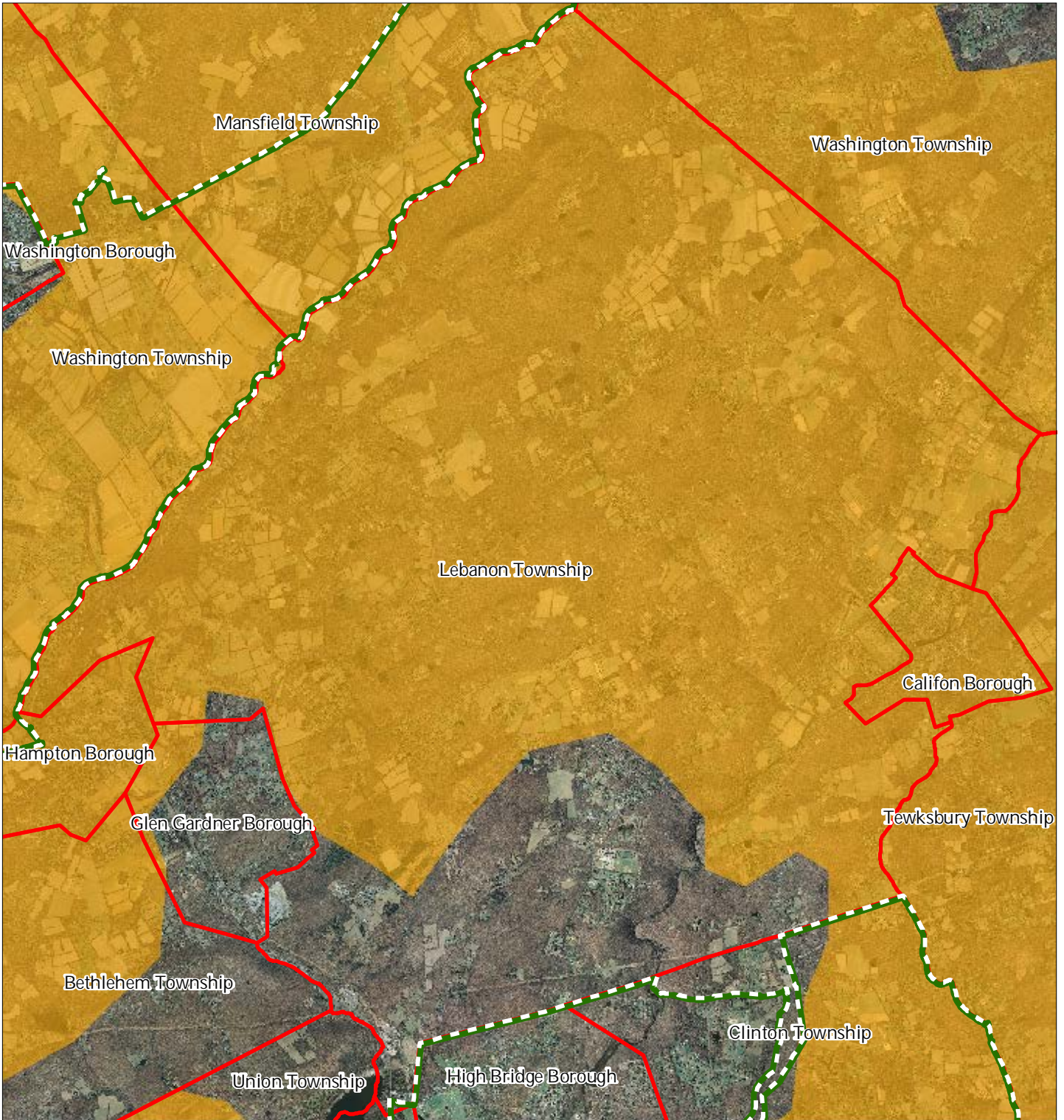





1 inch = 0.968 miles



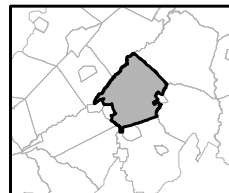
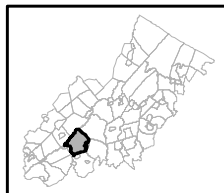
December 2011

Exhibit FF: Agricultural Resource Area



-  Agricultural Resource Area
-  Preservation Area
-  Municipal Boundaries

Lebanon Township

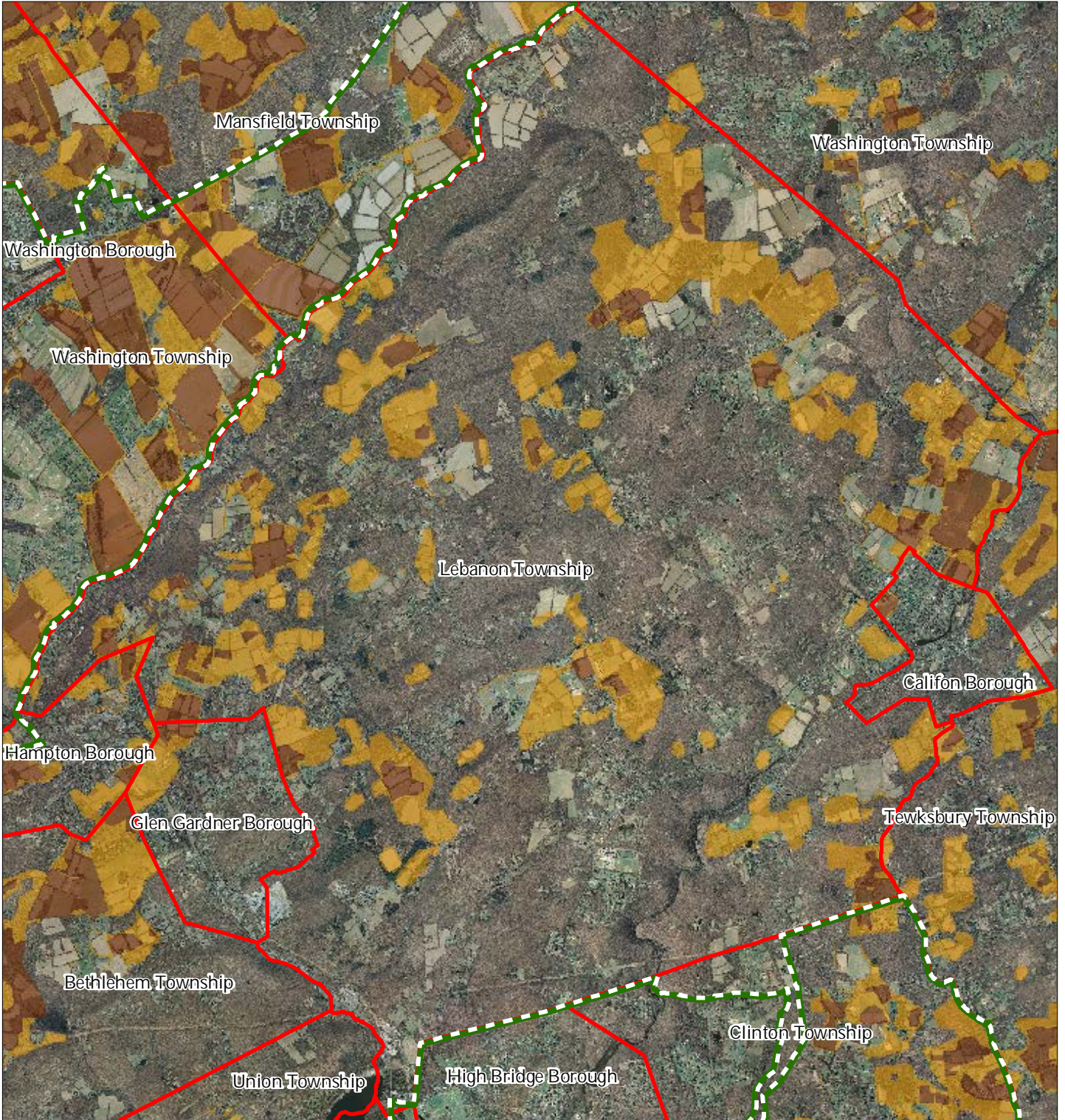


1 inch = 0.968 miles






December 2011

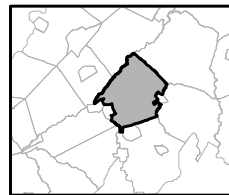
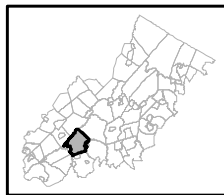
Exhibit GG: Agricultural Priority Area



Agricultural Priority Area

-  Moderate
-  High
-  Preservation Area
-  Municipal Boundaries

Lebanon Township

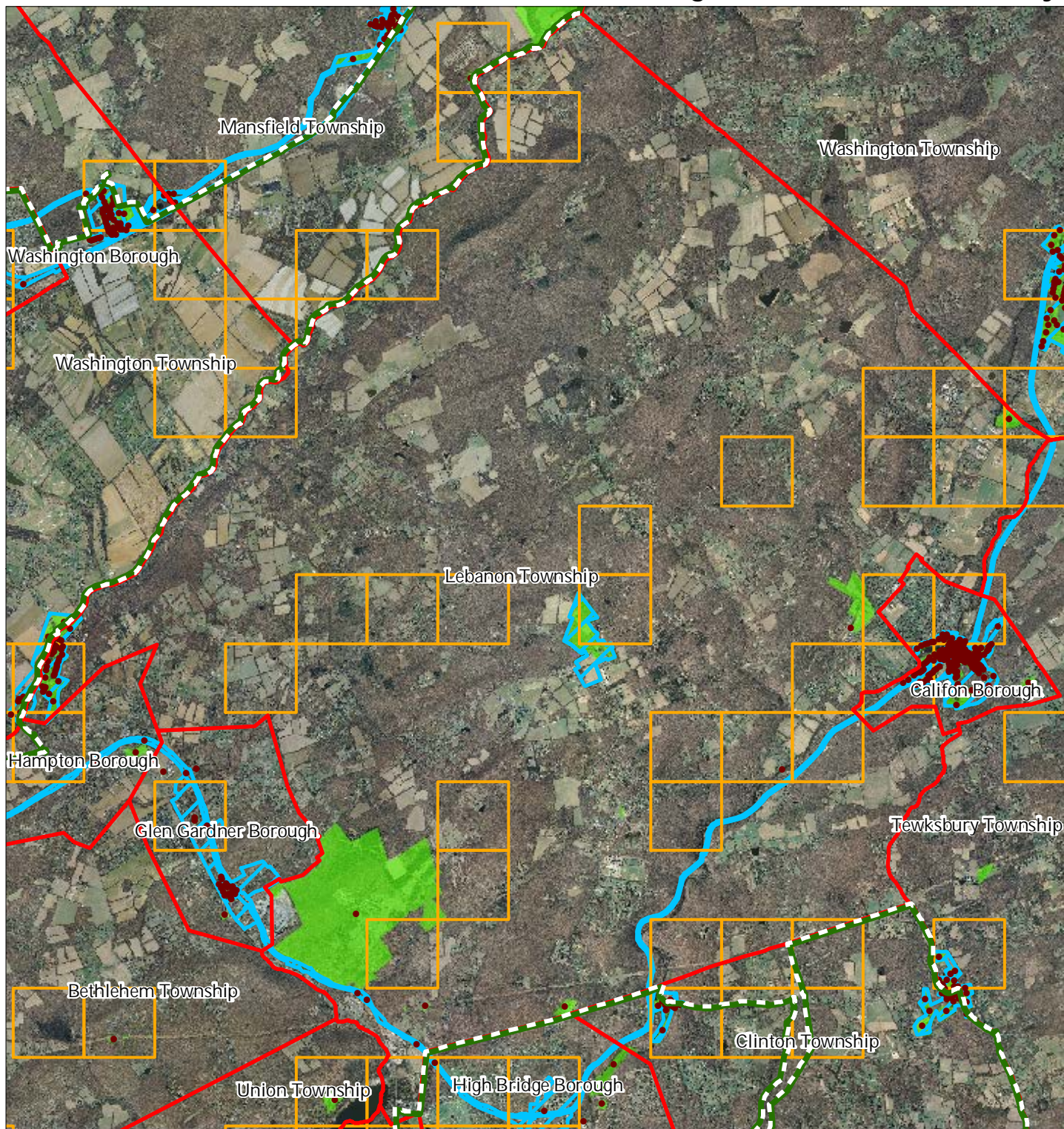


1 inch = 0.968 miles



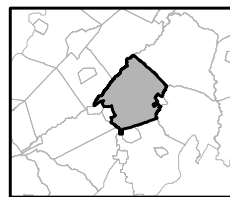
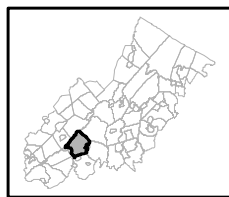
December 2011

Exhibit HH: Historic, Cultural, and Archaeological Resources Inventory



-  Preservation Area
-  Municipal Boundaries
-  Archaeological Grids (1 sqmi)
-  NJ Historic Districts
-  Historic Property Points
-  Historic Property Polygons

Lebanon Township

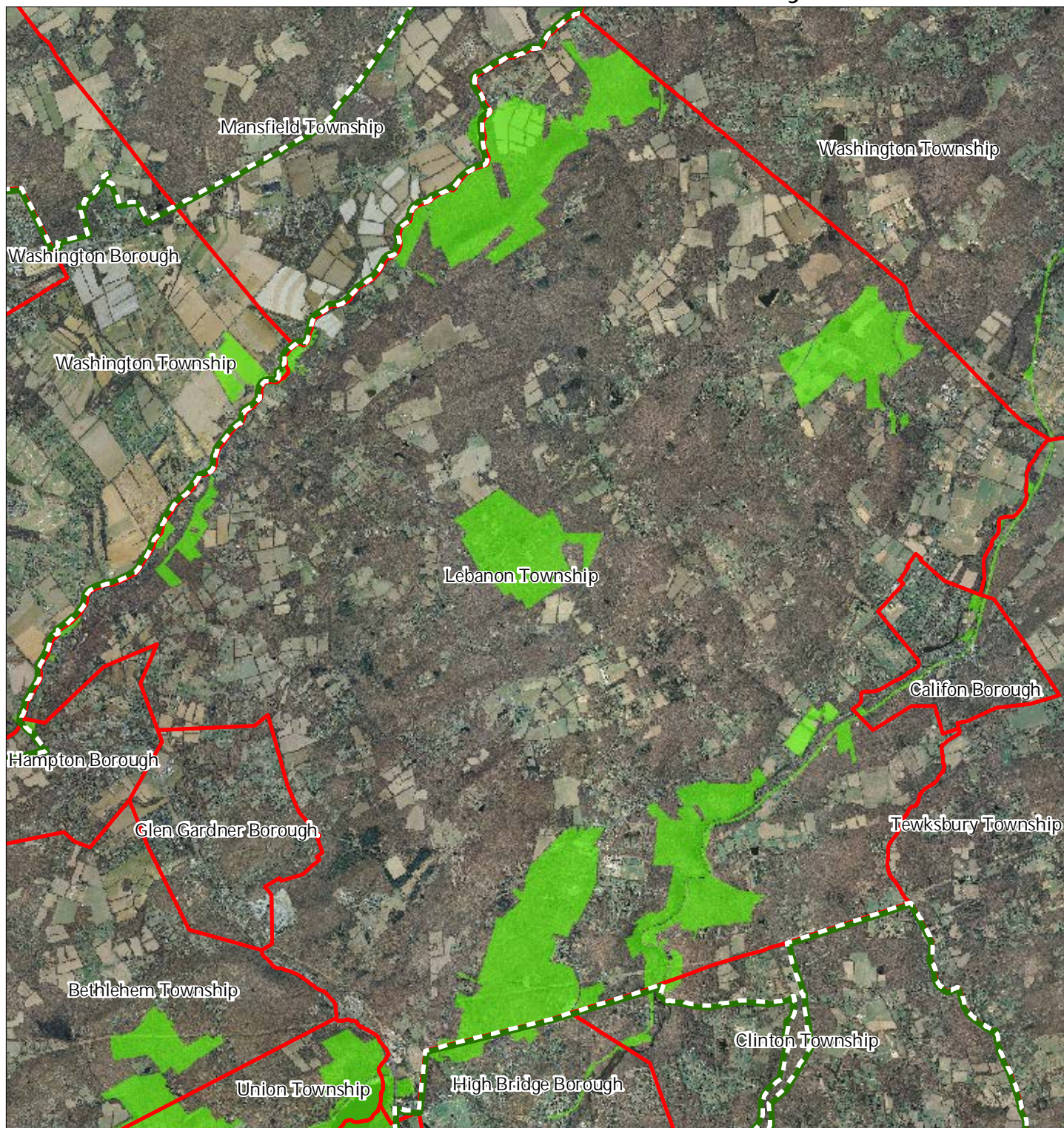





1 inch = 0.968 miles



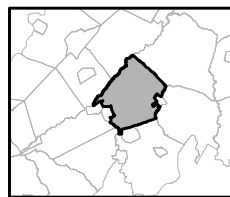
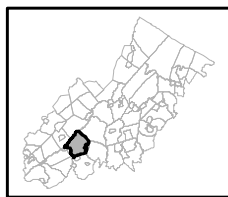
December 2011

Exhibit II: Baseline Scenic Resources Inventory



-  Scenic Resources
-  Municipal Boundaries
-  Preservation Area

Lebanon Township

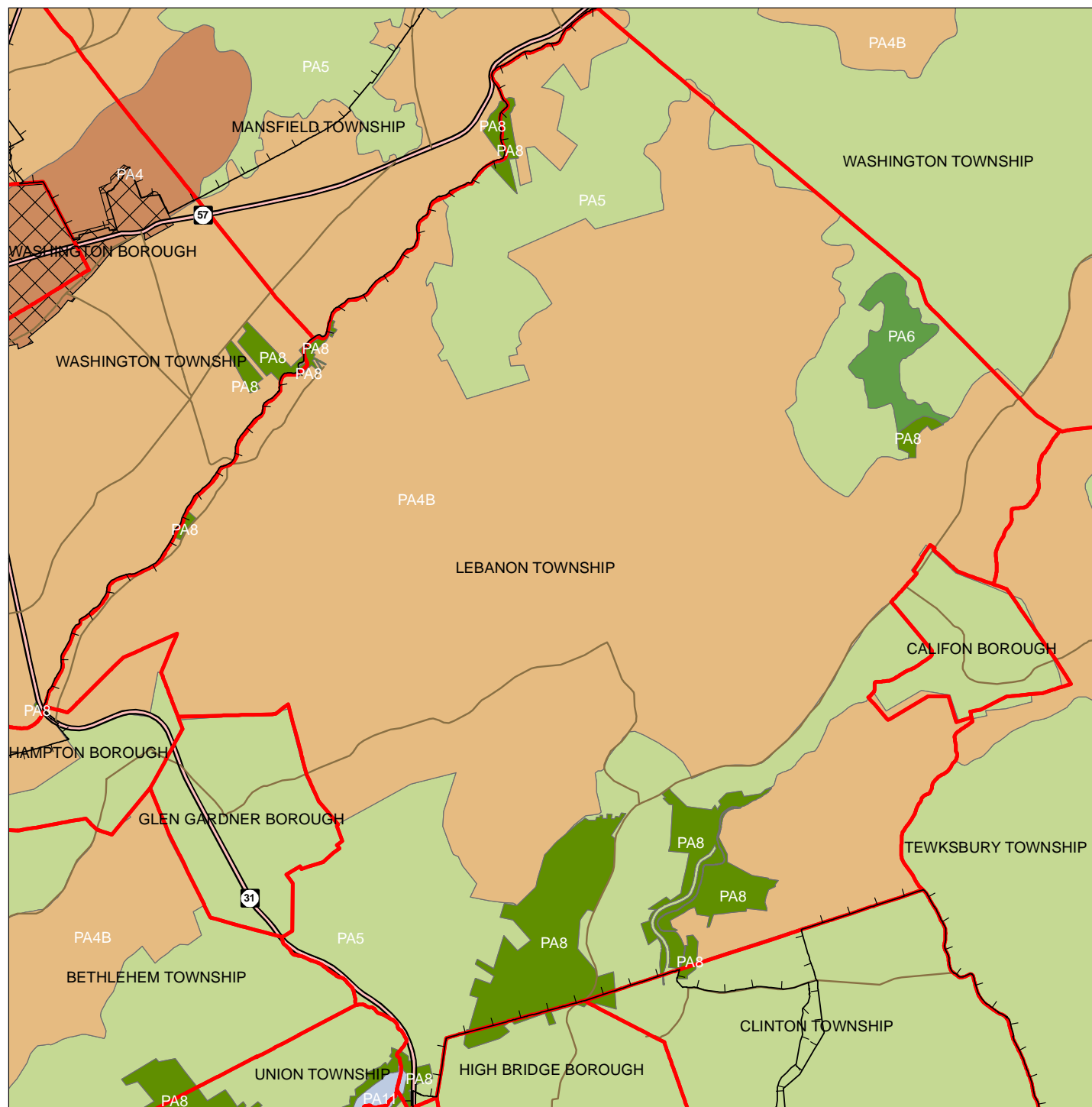


1 inch = 0.968 miles



December 2011

Exhibit JJ: SDRP Planning Areas



Legend

- Preservation Area
- Municipal Boundaries
- Interstate Highways
- U.S. Routes
- State Routes
- County Routes
- Designated Centers*

State Planning Areas*

- METROPOLITAN (PA1)
- SUBURBAN (PA2)
- FRINGE (PA3)
- RURAL (PA4)
- RURAL ENVIRONMENTALLY SENSITIVE (PA42)
- ENVIRONMENTALLY SENSITIVE (PA5)
- PARK (PA6)
- FEDERAL PARK (PA7)
- STATE PARK (PA8)
- WATER (PA11)
- MILITARY (PA12)

1 inch equals 1.03 miles

* All designated centers expired on 1/7/2008 except Byram (expires 5/19/2010), Stanhope (expires 10/16/2008), and Sparta and Vernon (expire 7/16/2009). Center designation may be redesignated by the State Planning Commission and the Highlands Council. State Planning Areas are from the State Development and Redevelopment Plan.

