

For Discussion Purposes



TAC CHARRETTE WORKBOOK

Sustainable Agriculture

NEW JERSEY HIGHLANDS COUNCIL

March 28, 2006



Overview of RMP Goals and Structure

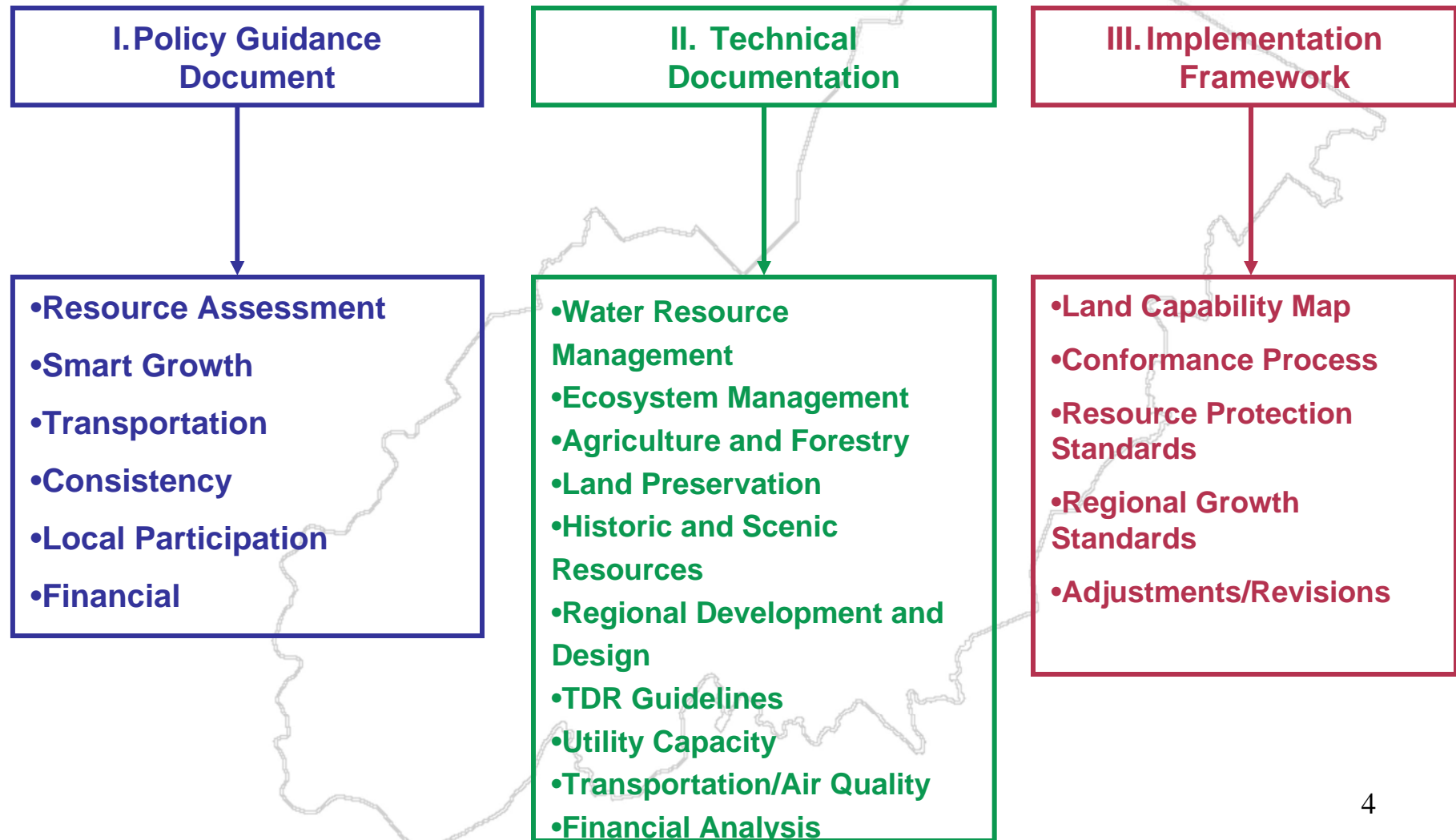
NEW JERSEY HIGHLANDS COUNCIL

New Jersey Highlands

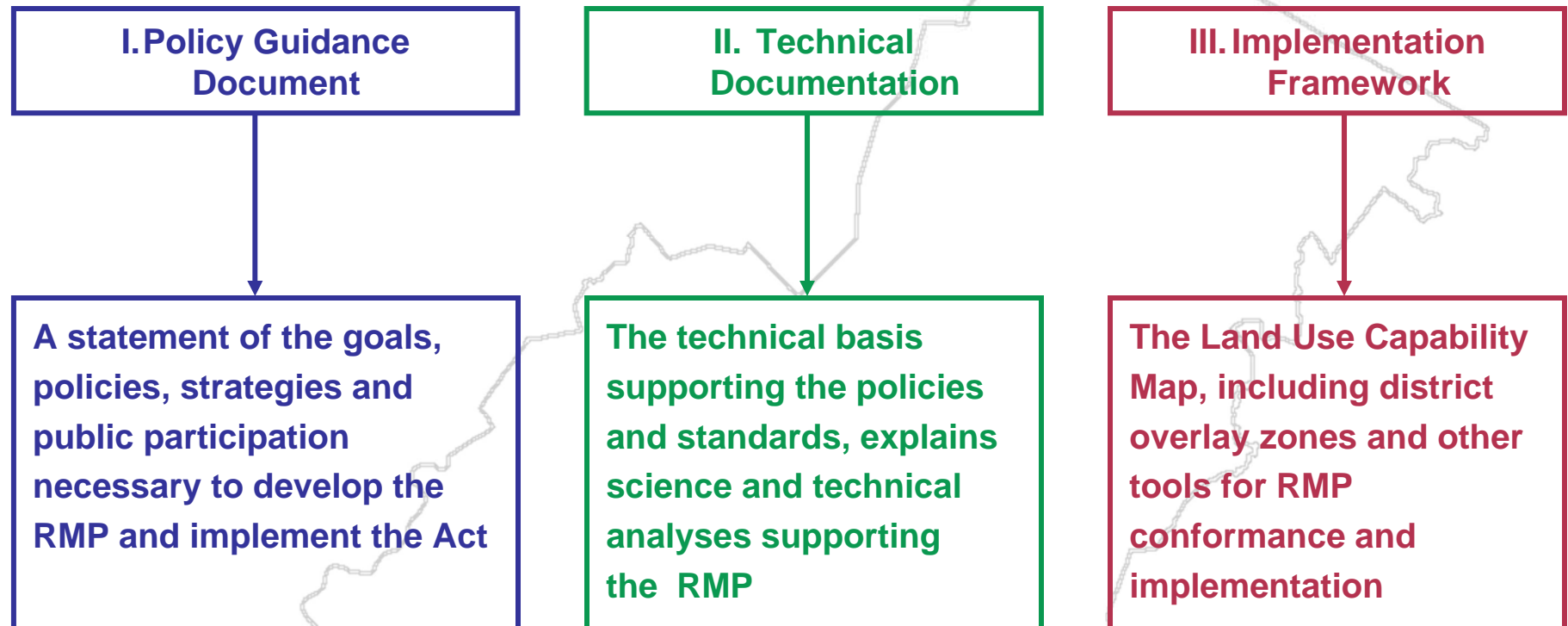
Goals of the Act

- **Protect and conserve the quality and quantity of drinking water**
- **Protect natural, scenic, recreational, cultural and historic resources**
- **Preserve contiguous lands in their natural state**
- **Preserve farmland and farming**
- **Promote appropriate patterns of development, redevelopment and economic growth**
- **Promote a sound and balanced transportation system**

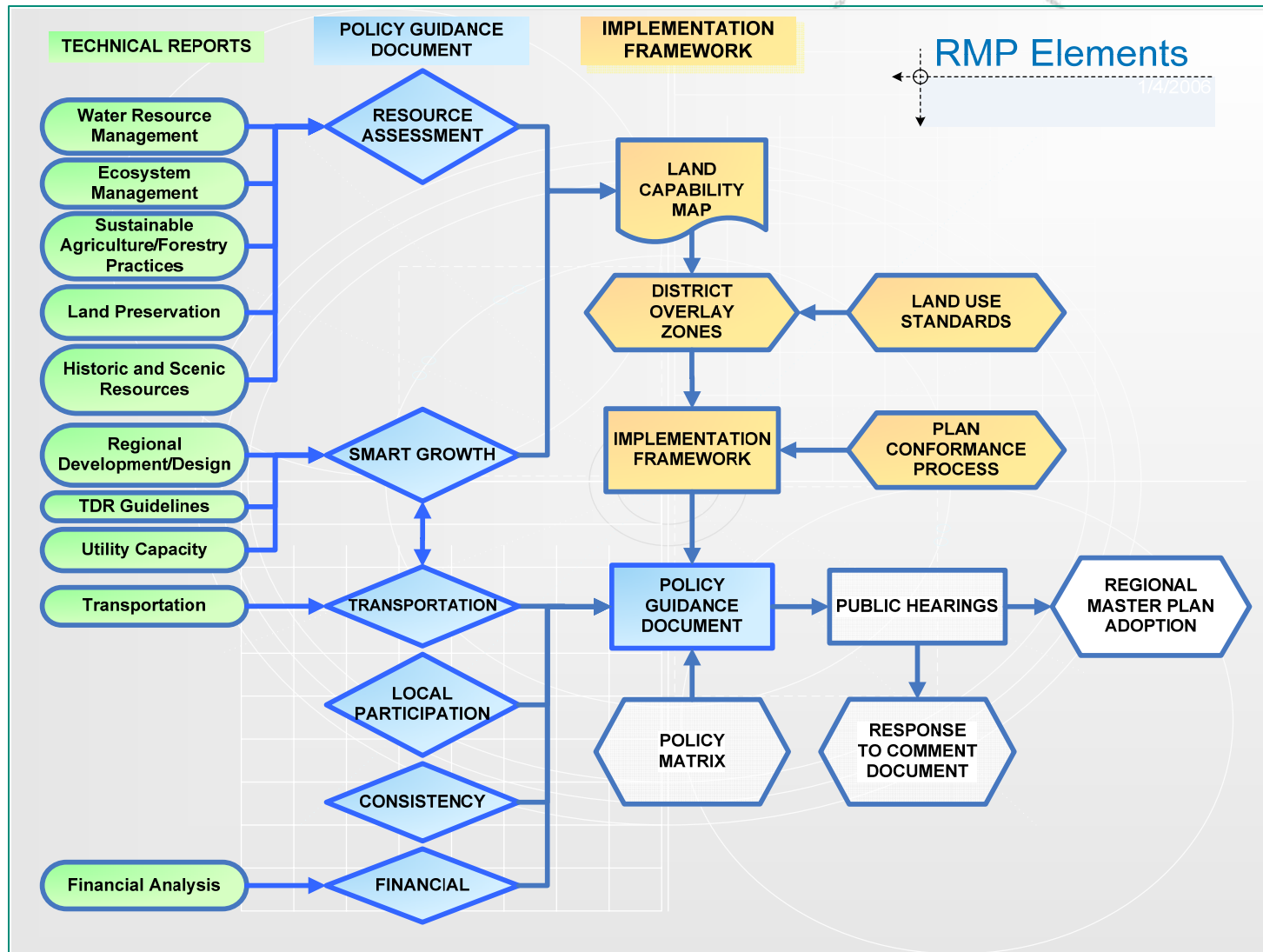
Highlands Regional Master Plan



Highlands Regional Master Plan



Highlands Regional Master Plan





Sustainable Agriculture Requirements of the Act

NEW JERSEY HIGHLANDS COUNCIL

Sustainable Agriculture

Requirements of the Act

- Assess the “...farmland resources of the region, together with a determination of overall policies required to maintain and enhance such resources.”

Highlands Act, N.J.S.A. 13:20-11.a (1) (b)



Technical Approach and Methods

Sustainable Agriculture

NEW JERSEY HIGHLANDS COUNCIL

Sustainable Agriculture

OBJECTIVES

- Identify and evaluate existing agricultural resources
- Identify agriculture sustainability strategies that serve to promote a viable agriculture industry in the region
- Work in cooperation with agriculture community to achieve goals of the Act



Sustainable Agriculture

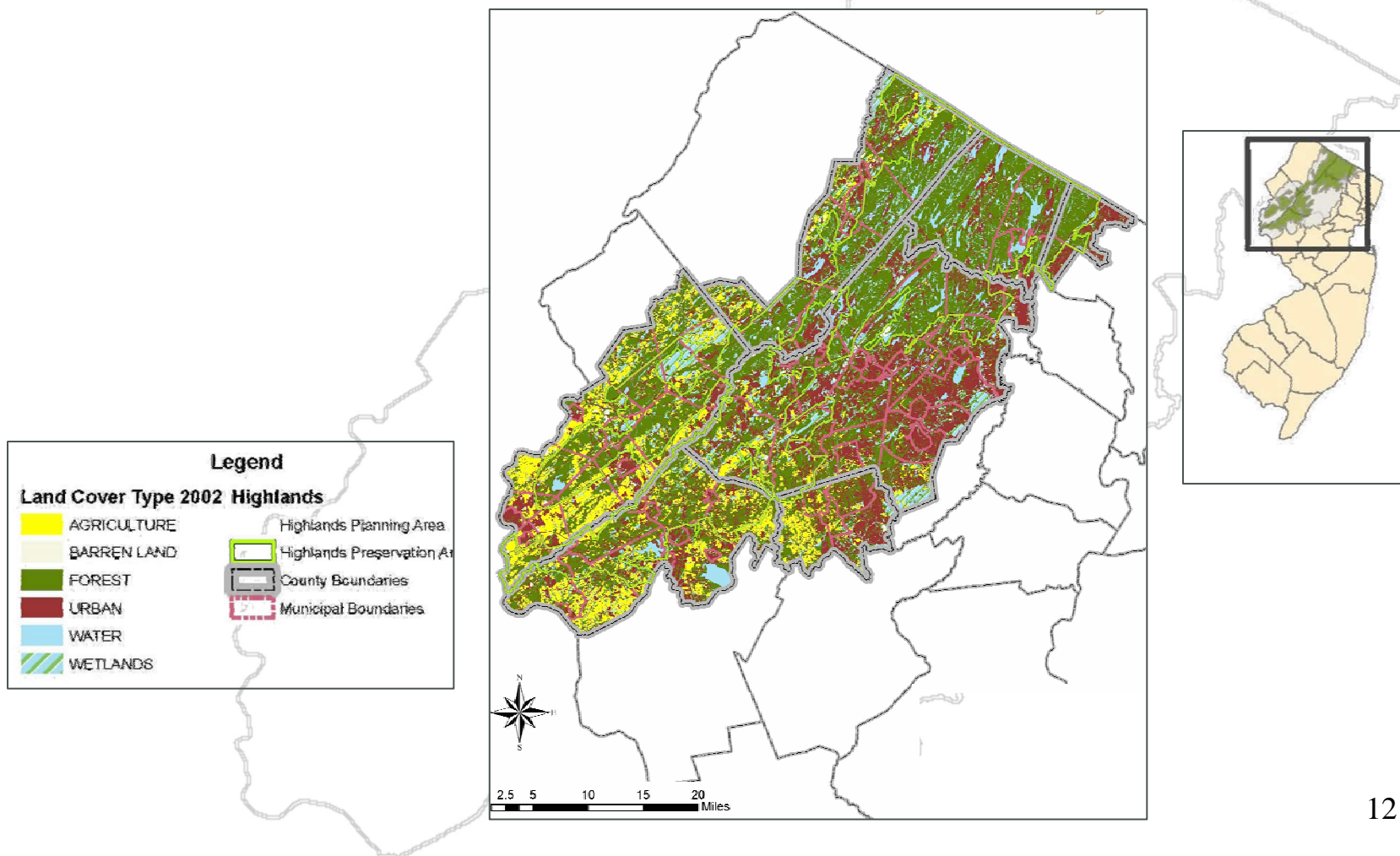
Data Sources

- **2002 LULC to identify agricultural lands**
- **Use GIS to:**
 - Identify and prioritize prime agriculture and other important soils
 - Identify preserved farmland
 - Identify adjoining conflicting land uses, (e.g., residential, commercial, recreation)
 - Identify critical mass of agricultural activity to maintain support services
- **NJ Department of Agriculture
2006 Economic
Development Strategies**
- **Agricultural Smart Growth Plan for
NJ Strategies for Sustainable Development**



Sustainable Agriculture

New Jersey Highlands Land Cover Type 2002



Sustainable Agriculture

Census of Agriculture -- County Data

	1992	1997	2002
Bergen County			
Farms, number	127	121	91
Land in farms/acre	2,636	2,633	1,283
Average size of farm	21	22	14
Hunterdon County			
Farms, number	1,299	1,313	1,514
Land in farms/acre	106,324	105,230	109,241
Average size of farm	82	80	72
Morris County			
Farms, number	395	383	407
Land in farms/acre	23,915	22,351	17,233
Average size of farm	61	58	42

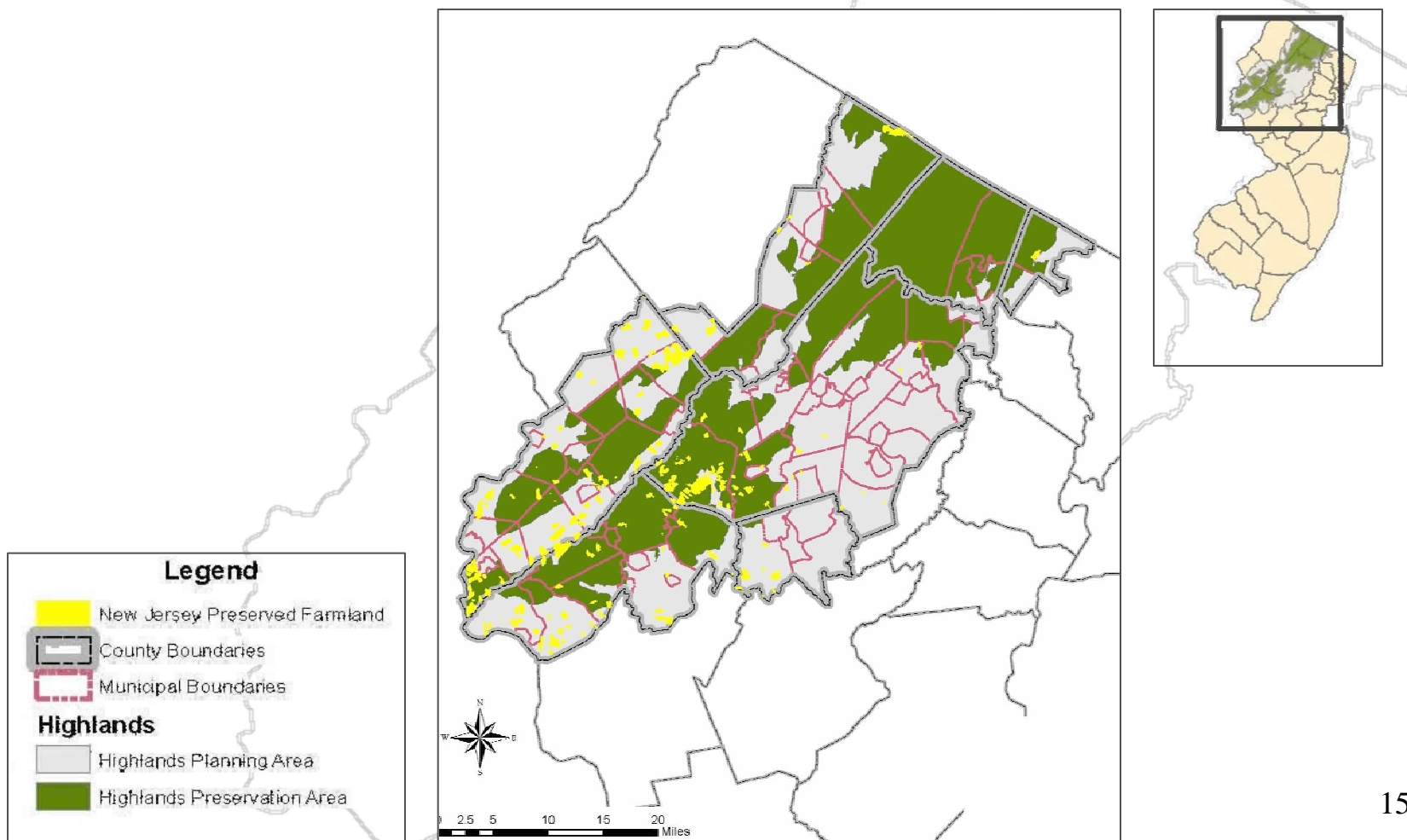
Sustainable Agriculture

Census of Agriculture -- County Data (cont)

	1992	1997	2002
Passaic County			
Farms, number	55	55	70
Land in farms/acre	1,838	2,232	1,526
Average size of farm	33	41	22
Somerset County			
Farms, number	435	437	442
Land in farms/acre	43,989	46,258	36,237
Average size of farm	101	106	82
Sussex County			
Farms, number	791	827	1,029
Land in farms/acre	75,531	73,001	75,496
Average size of farm	95	88	73
Warren County			
Farms, number	684	730	814
Land in farms/acre	87,638	82,900	78,042
Average size of farm	128	114	96

Sustainable Agriculture

New Jersey Highlands Preserved Farmland



Sustainable Agriculture

New Jersey Highlands Preserved Farmland

Identify existing agricultural resources

- Identification and prioritization of farmlands using LULC, prime agricultural soils, preserved farmland using State Agriculture Development Committee, NJ Dept. of Agriculture and other data sources and potentially conflicting adjacent land uses based on LULC.

Develop agriculture sustainability strategies

- Document economic, legal, institutional, research, technical assistance and educational tools.

Sustainable Agriculture

(continued)

Work in cooperation with agriculture community to achieve goals of the Act

- Identification of technologies, policies and strategies that preserve contiguous farmland and farming in a way that also helps to protect the Region's water resources.





Problem Statements **Sustainable Agriculture**

NEW JERSEY HIGHLANDS COUNCIL

Sustainable Agriculture

Problem Statement #1

- Are there additional resource-based or other factors beside agricultural soils, land use/land cover (LULC) and preserved farmland that should be considered in identifying agricultural resources (e.g. farmland assessed and adjacent lands as complement to active farms)?

Problem Statement #2

- In addition to right-to-farm laws, what local zoning and planning options could be used to support sustainable agriculture and consistent treatment of the agriculture community region-wide?

Sustainable Agriculture

Problem Statement #3

- What agriculture management, marketing and technological practices will aid in sustainable agriculture in the Highlands while protecting biodiversity and water resources?

Problem Statement #4

- What fee/tax, land leasing and other innovative measures are necessary to support financial stability and viable agriculture?

Sustainable Agriculture

Problem Statement #5

- To what extent is equity protection an essential element of sustainable agriculture?

