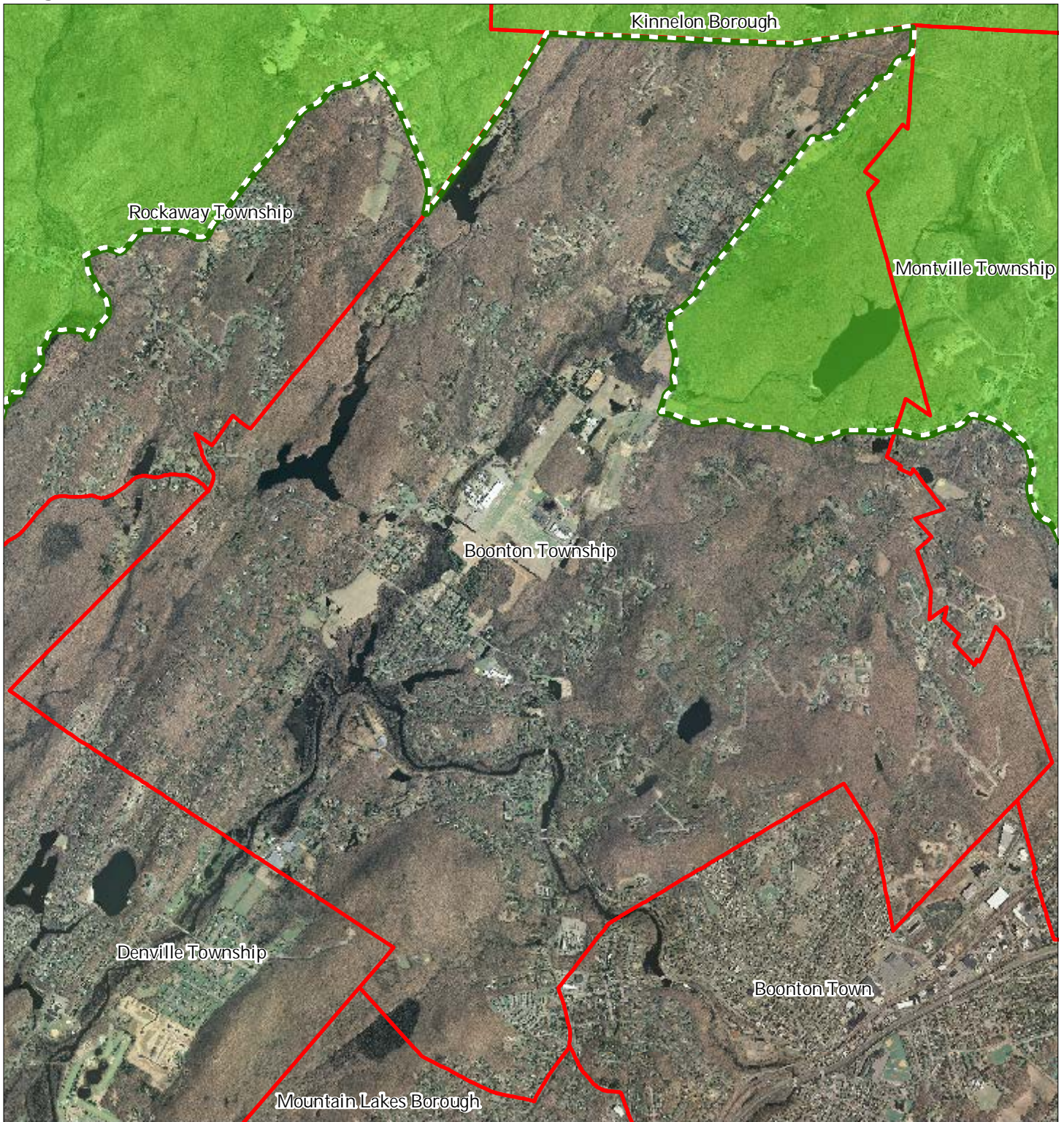


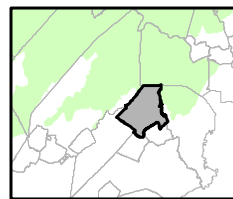
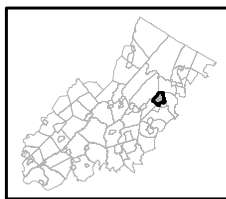


Figure 1: Preservation Area



-  Preservation Area
-  Municipal Boundaries

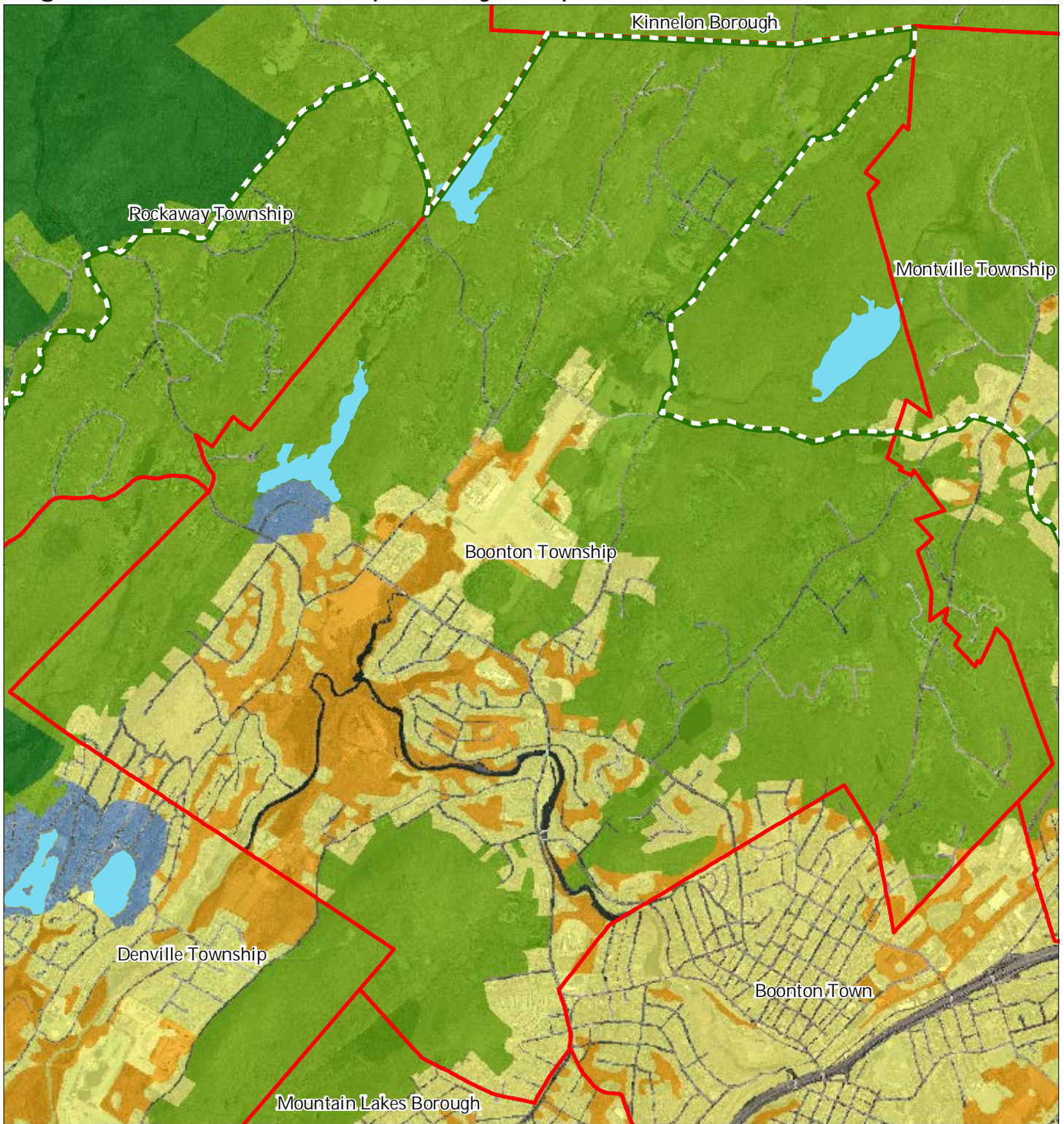
Boonton Township













1 inch = 0.491 miles



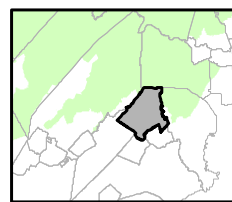
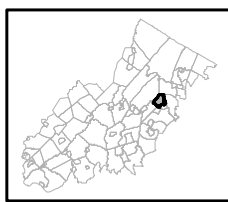
Figure 2: Land Use Capability Map Zones



Regional Master Plan Overlay Zone Designation

- | | |
|-----------------------------------------------------------------------------------------------------------------------------------|-----------------------------------------------------------------------------------------------------------------|
|  Protection |  Lakes Greater Than 10 acres |
|  Conservation |  Preservation Area |
|  Existing Community |  Municipal Boundaries |
| Sub-Zone | |
|  Existing Community Environmentally Constrained | |
|  Conservation Environmentally Constrained | |
|  Lake Community | |
|  Wildlife Management | |

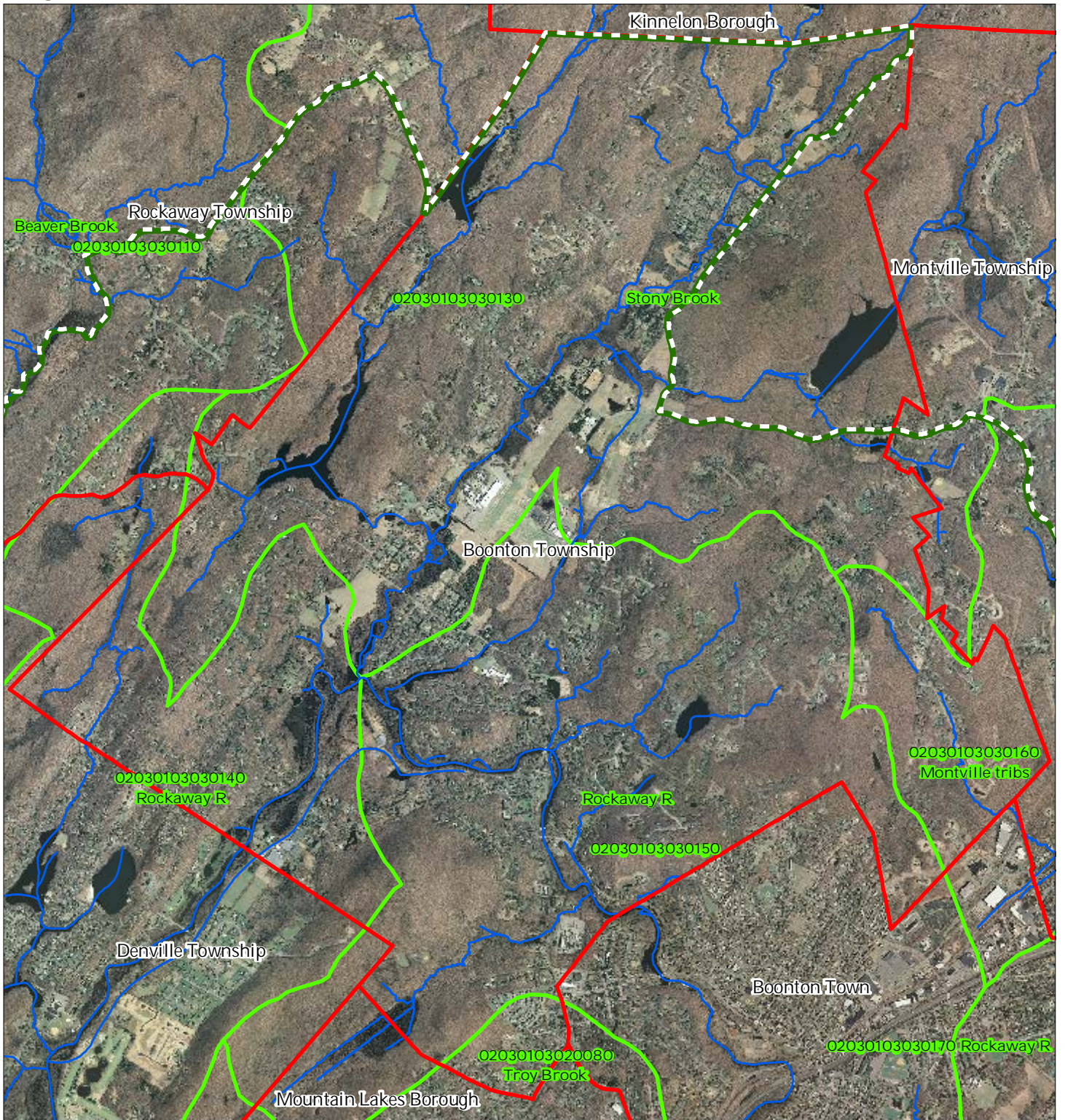
Boonton Township



1 inch = 0.491 miles

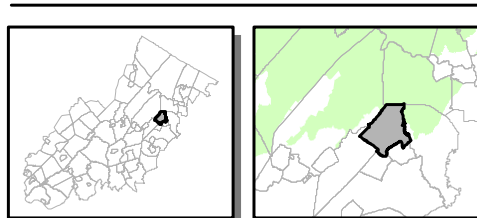


Figure 3: HUC 14 Boundaries



- HUC 14 Subwatersheds
- Stream Centerlines
- Preservation Area
- Municipal Boundaries

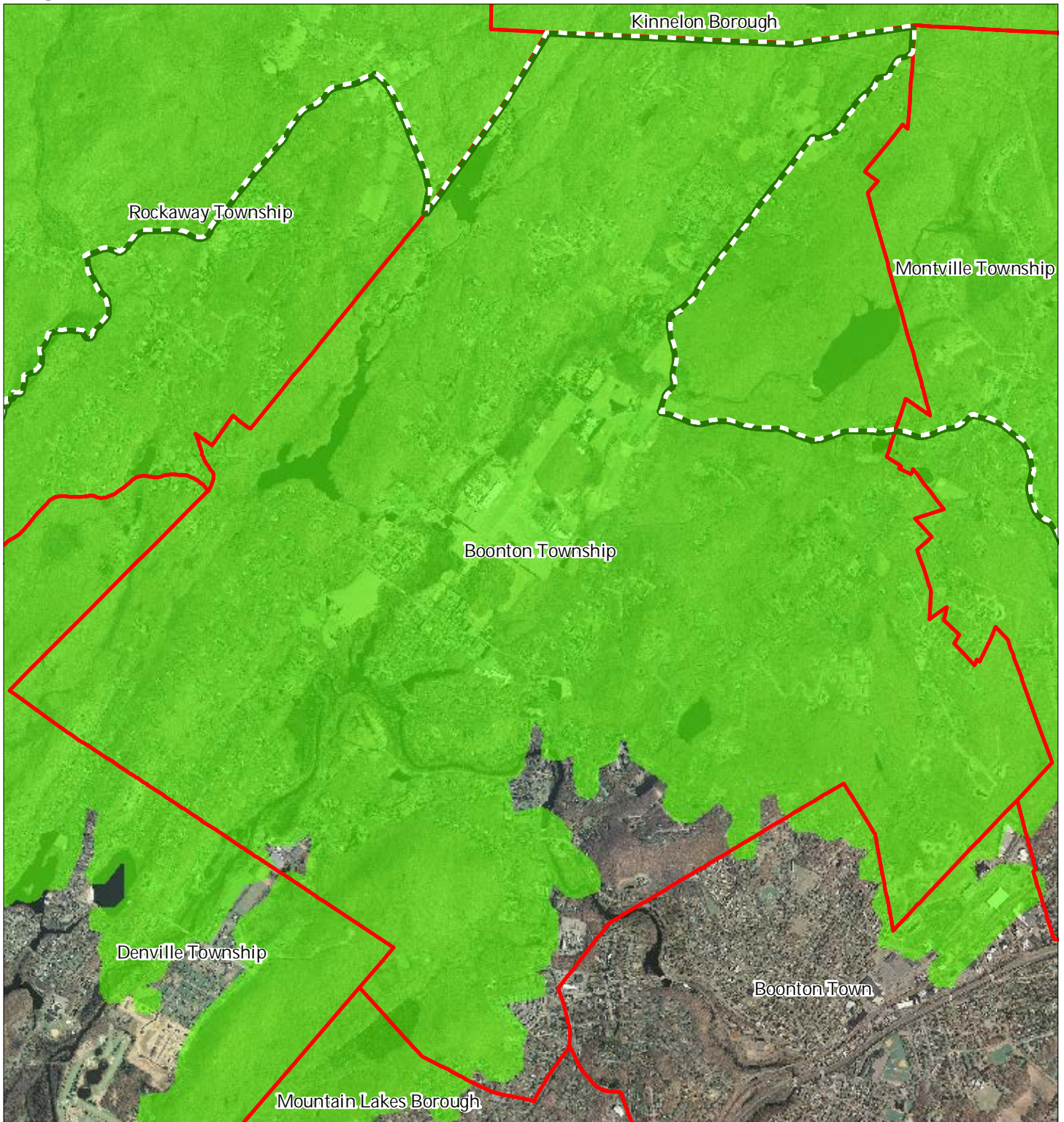
Boonton Township






1 inch = 0.491 miles

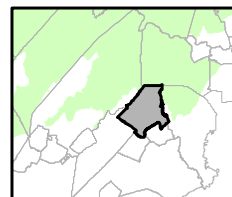
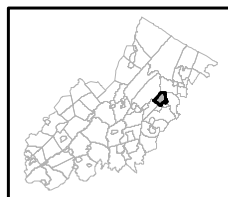


Figure 4: Forest Resource Area



-  Forest Resource Area
-  Preservation Area
-  Municipal Boundaries

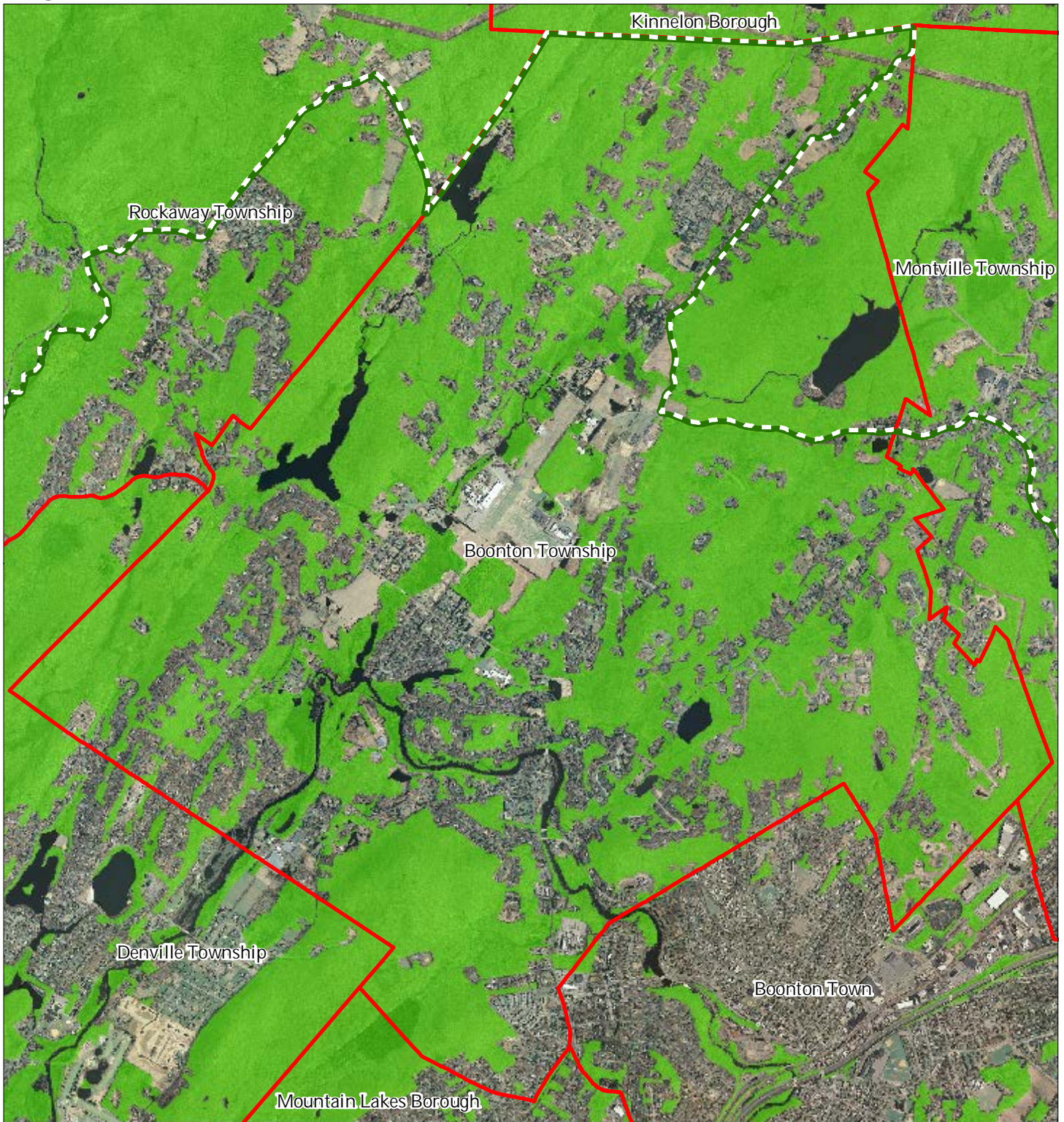
Boonton Township






1 inch = 0.491 miles

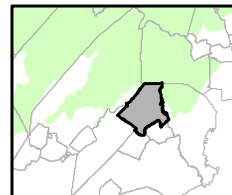
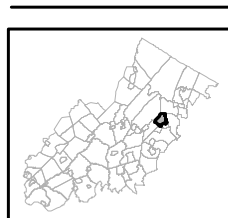


Figure 5: Total Forest Area



-  Forested Areas
-  Preservation Area
-  Municipal Boundaries

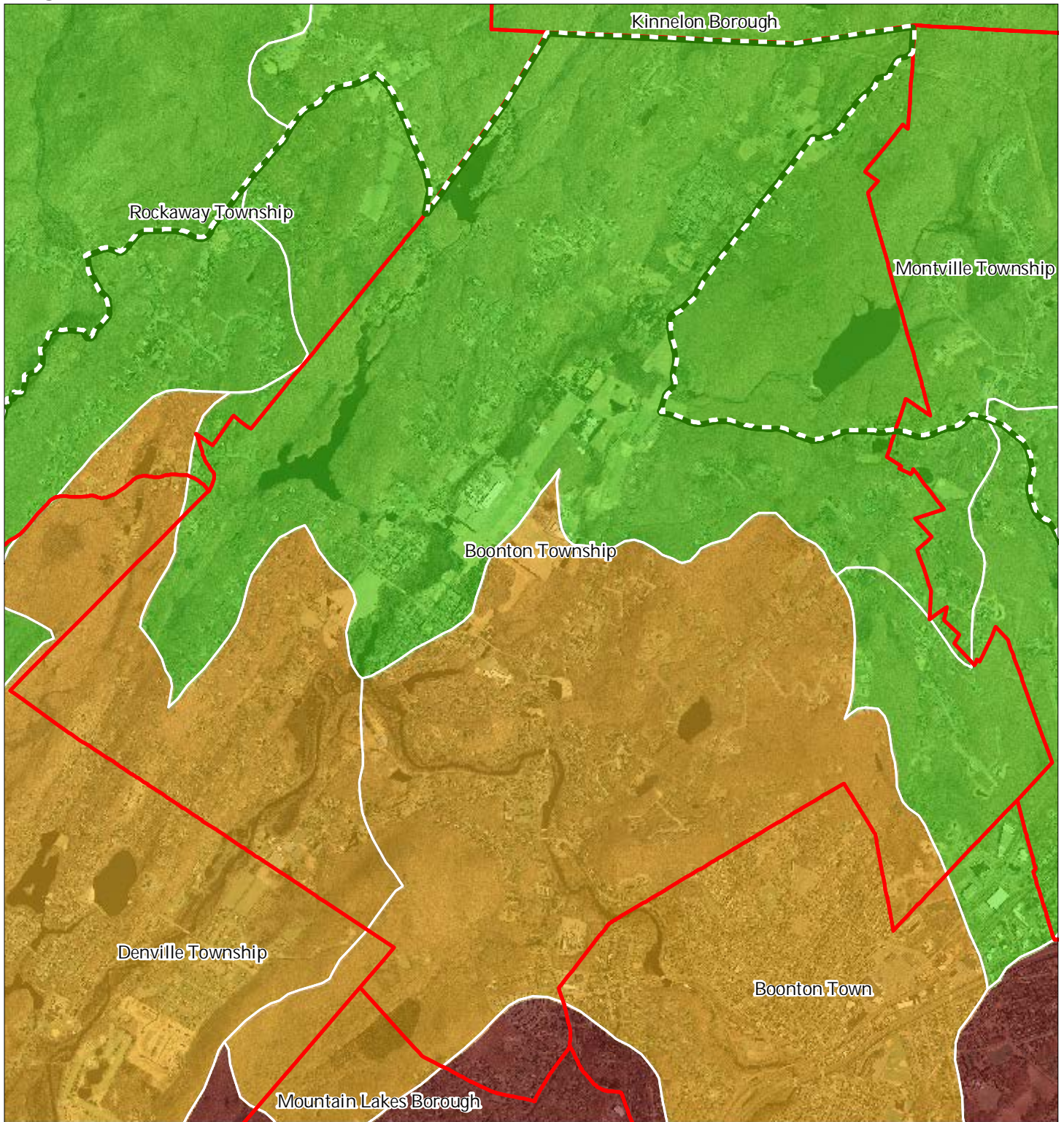
Boonton Township








1 inch = 0.491 miles



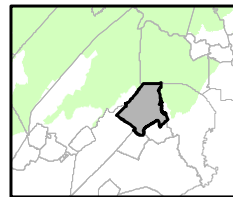
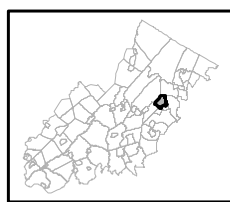
Figure 6: Forest Subwatersheds



Forest Integrity by HUC14 Subwatershed

-  *Low*
-  *Moderate*
-  *High*
-  Preservation Area
-  Municipal Boundaries

Boonton Township

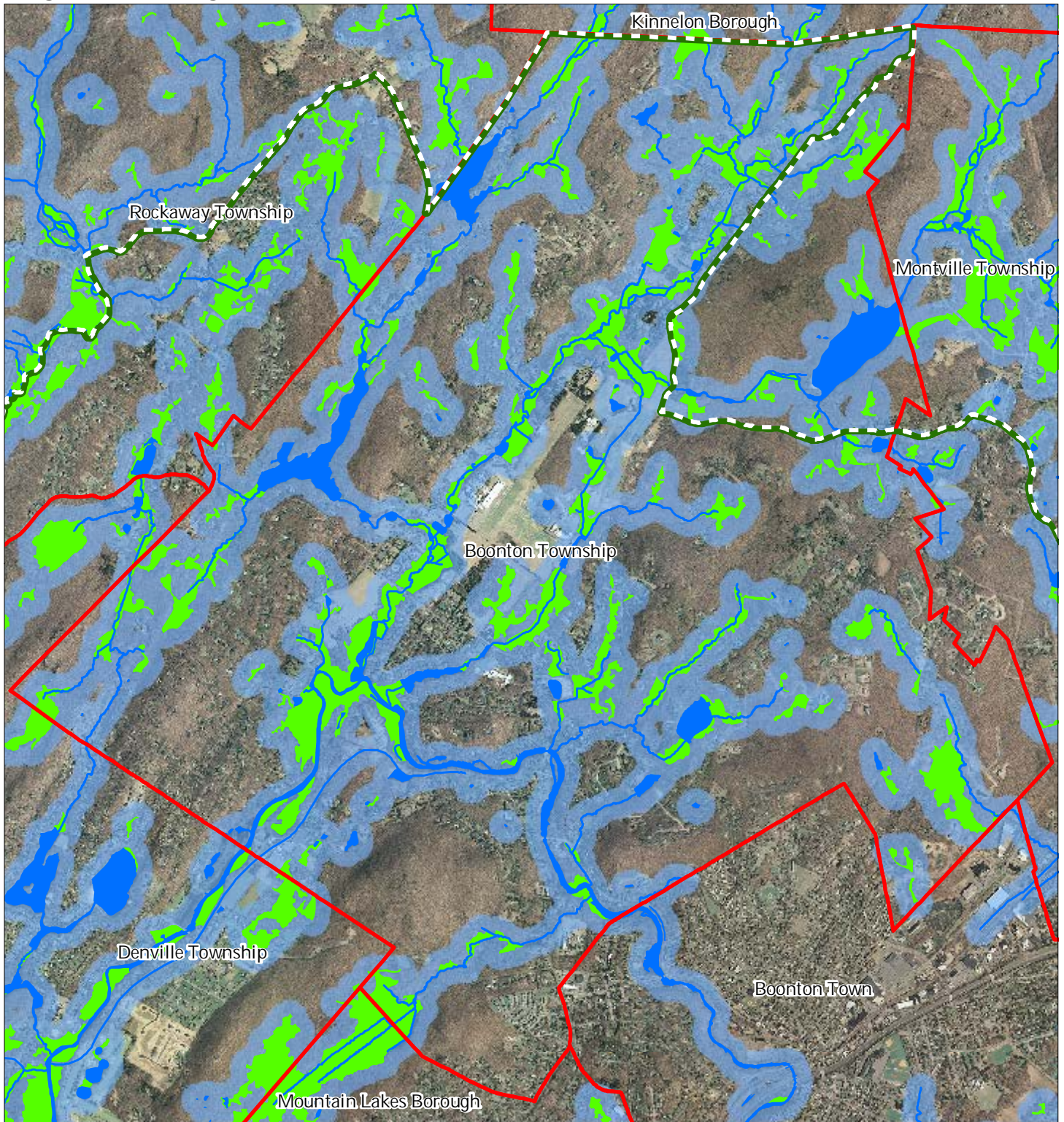


1 inch = 0.491 miles



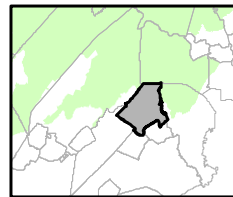
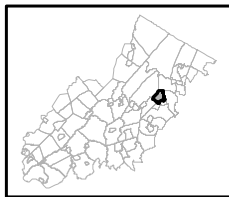
July 2015

Figure 7: Highlands Open Waters



- Highlands Open Water Buffers (300ft)
- Streams
- Wetlands
- Lakes & Ponds
- Preservation Area
- Municipal Boundaries

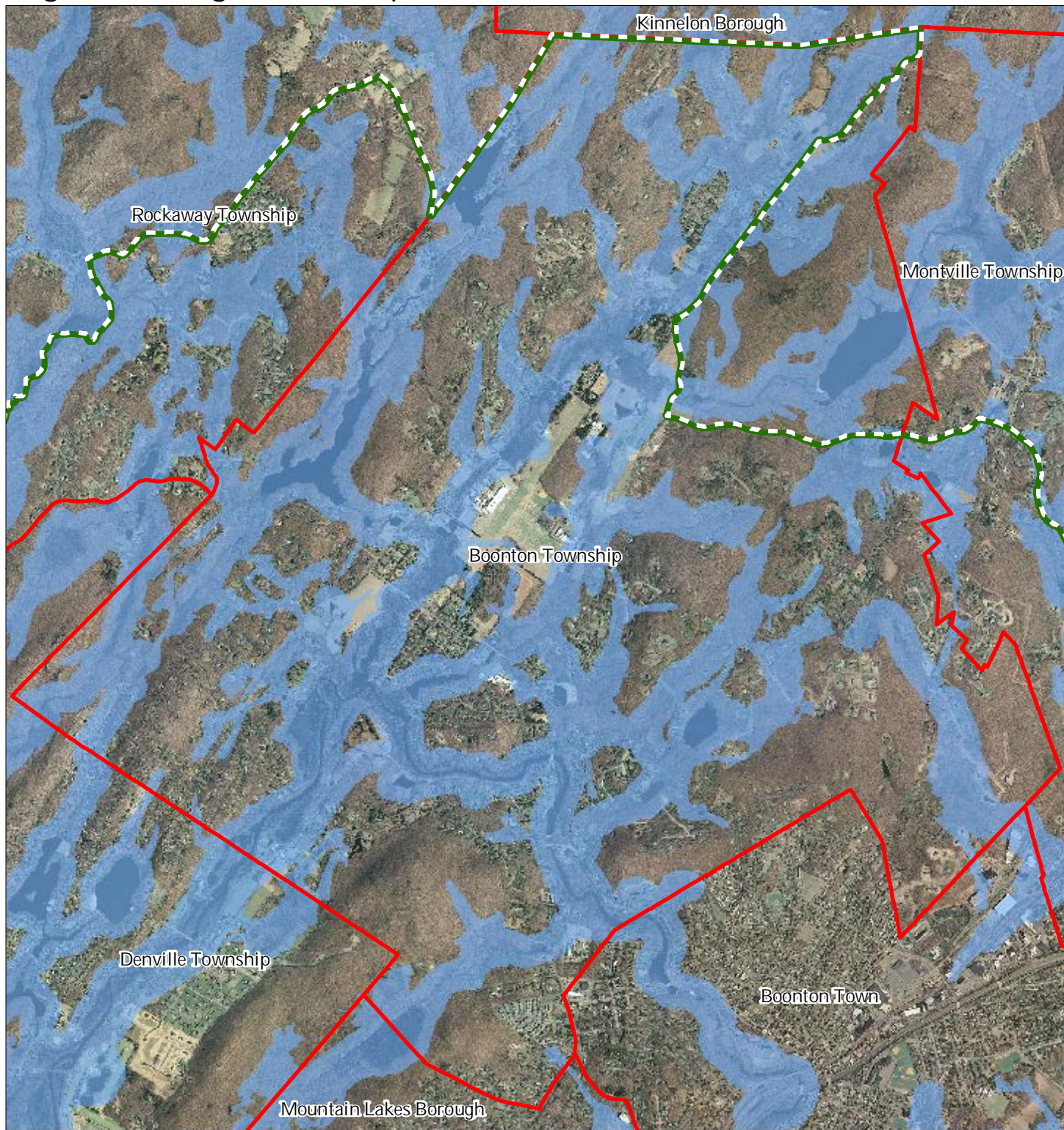
Boonton Township

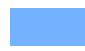




1 inch = 0.491 miles



Figure 8: Highlands Riparian Areas



-  Riparian Area
-  Preservation Area
-  Municipal Boundaries

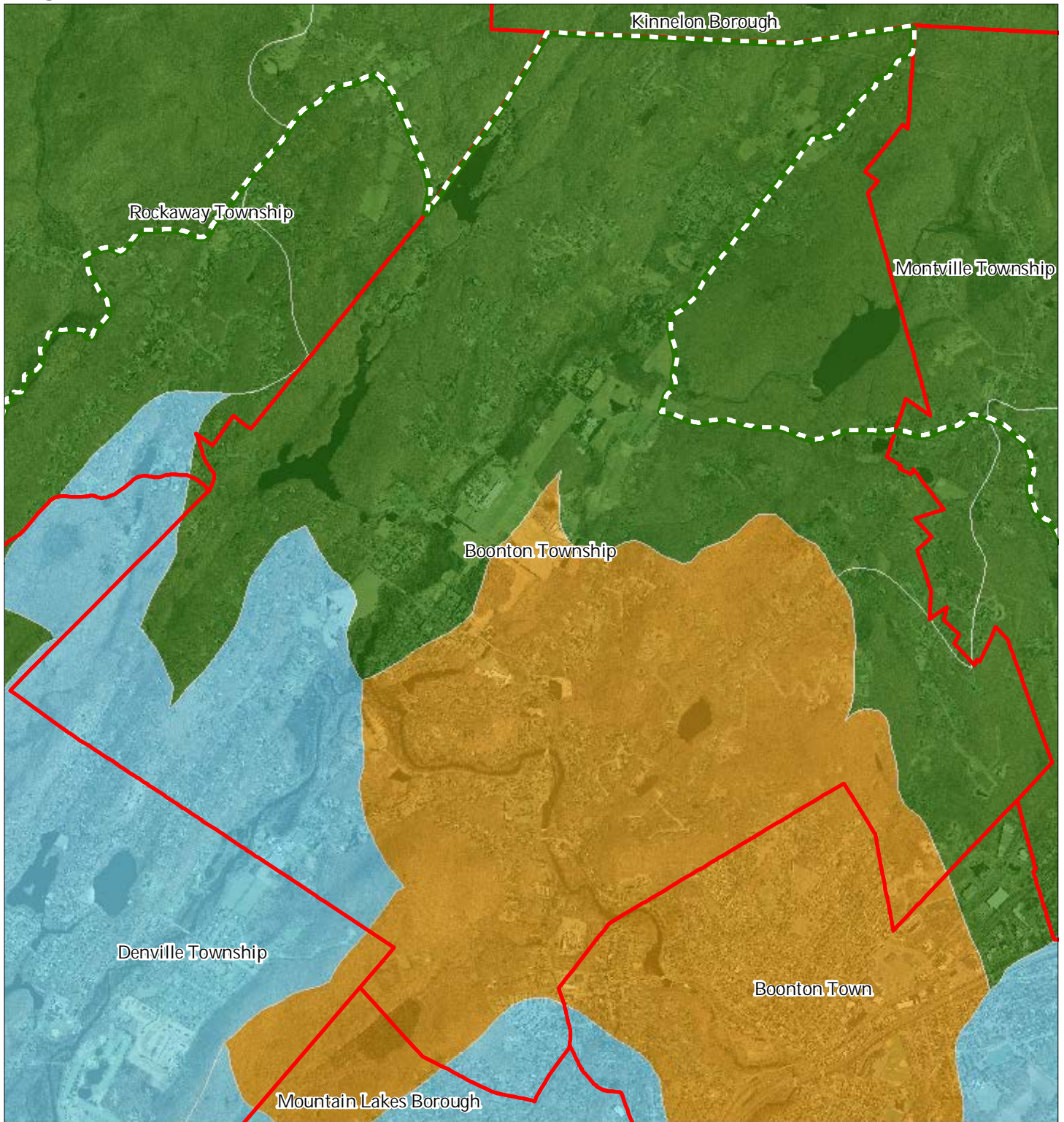
Boonton Township



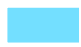




1 inch = 0.491 miles



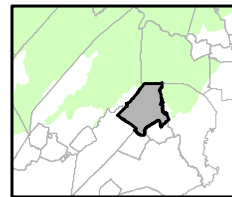
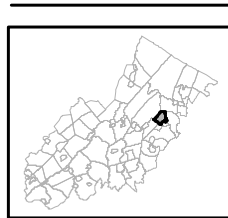
Figure 9: Watershed Values



Watershed Values by HUC14 Subwatershed

-  Low
-  Moderate
-  High
-  Preservation Area
-  Municipal Boundaries

Boonton Township

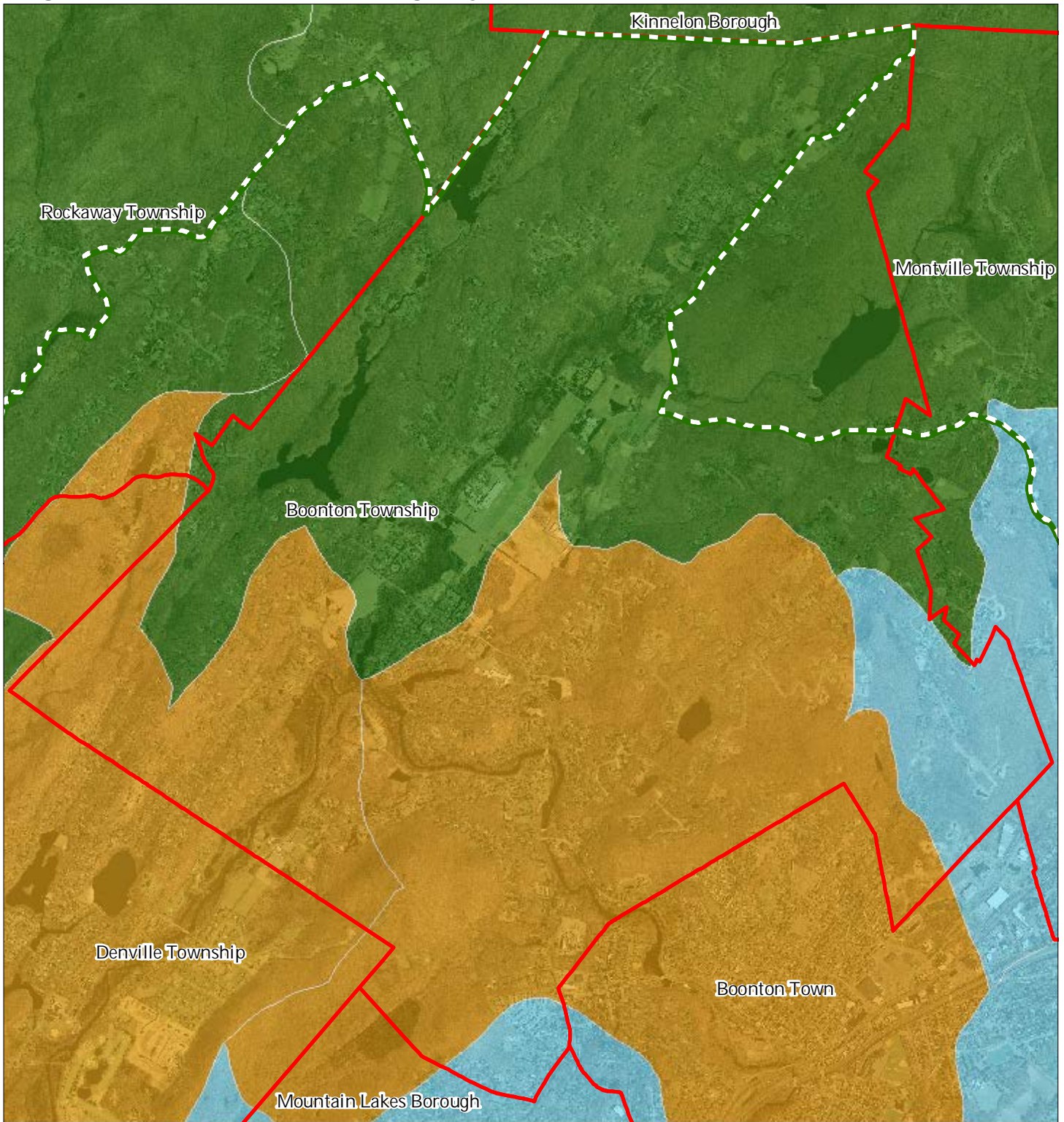


1 inch = 0.491 miles

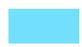






July 2015

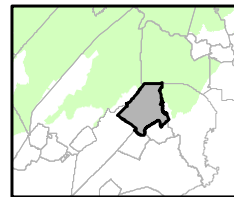
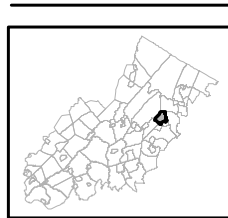
Figure 10: Riparian Integrity



Riparian Integrity by HUC14 Subwatershed

-  Low
-  Moderate
-  High
-  Preservation Area
-  Municipal Boundaries

Boonton Township

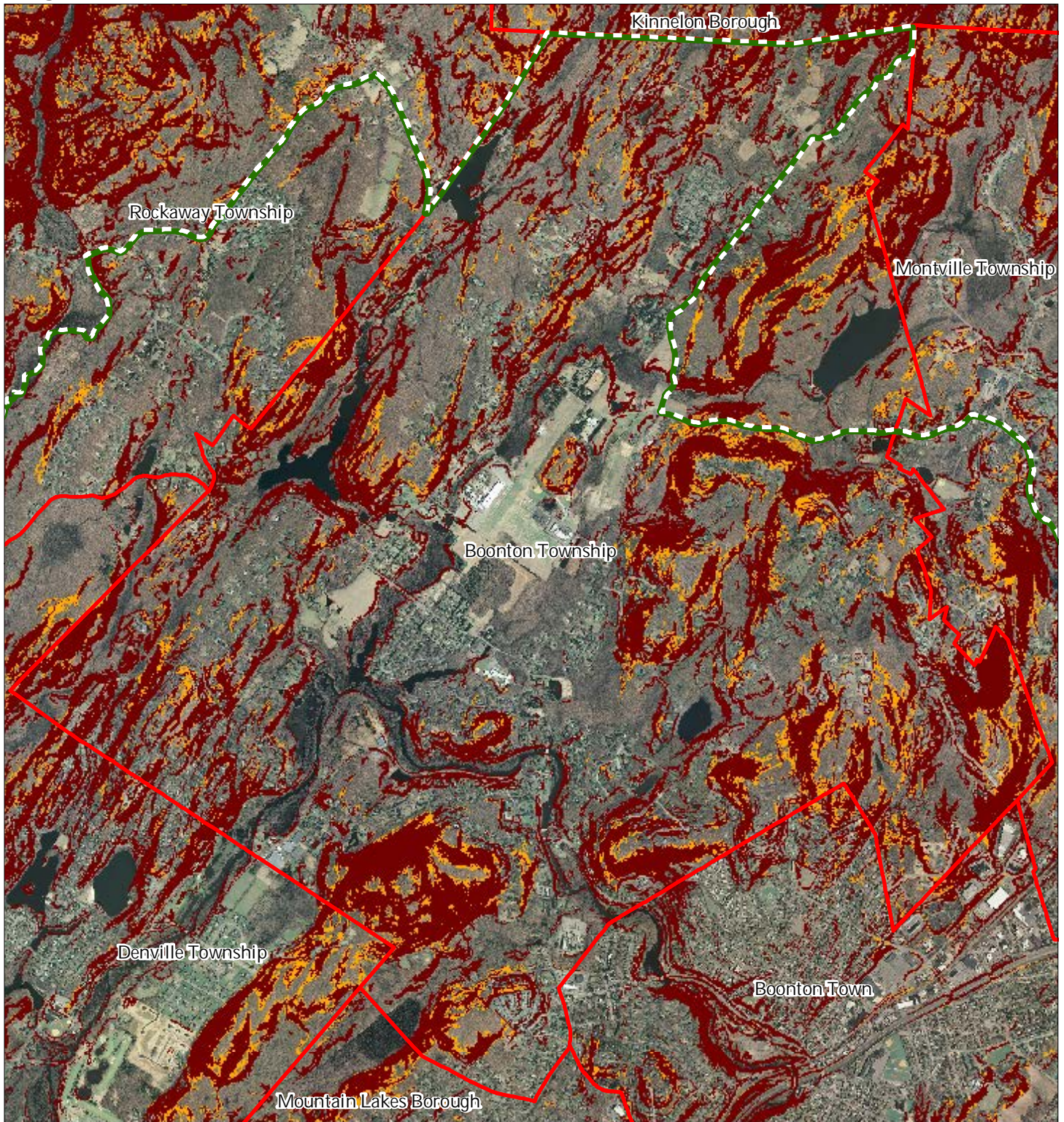


1 inch = 0.491 miles





July 2015

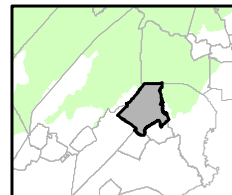
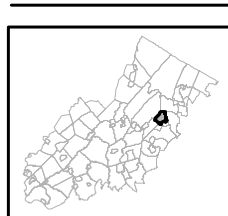
Figure 11: Steep Slope Protection Areas



Steep Slopes

-  Moderate
-  Severe
-  Preservation Area
-  Municipal Boundaries

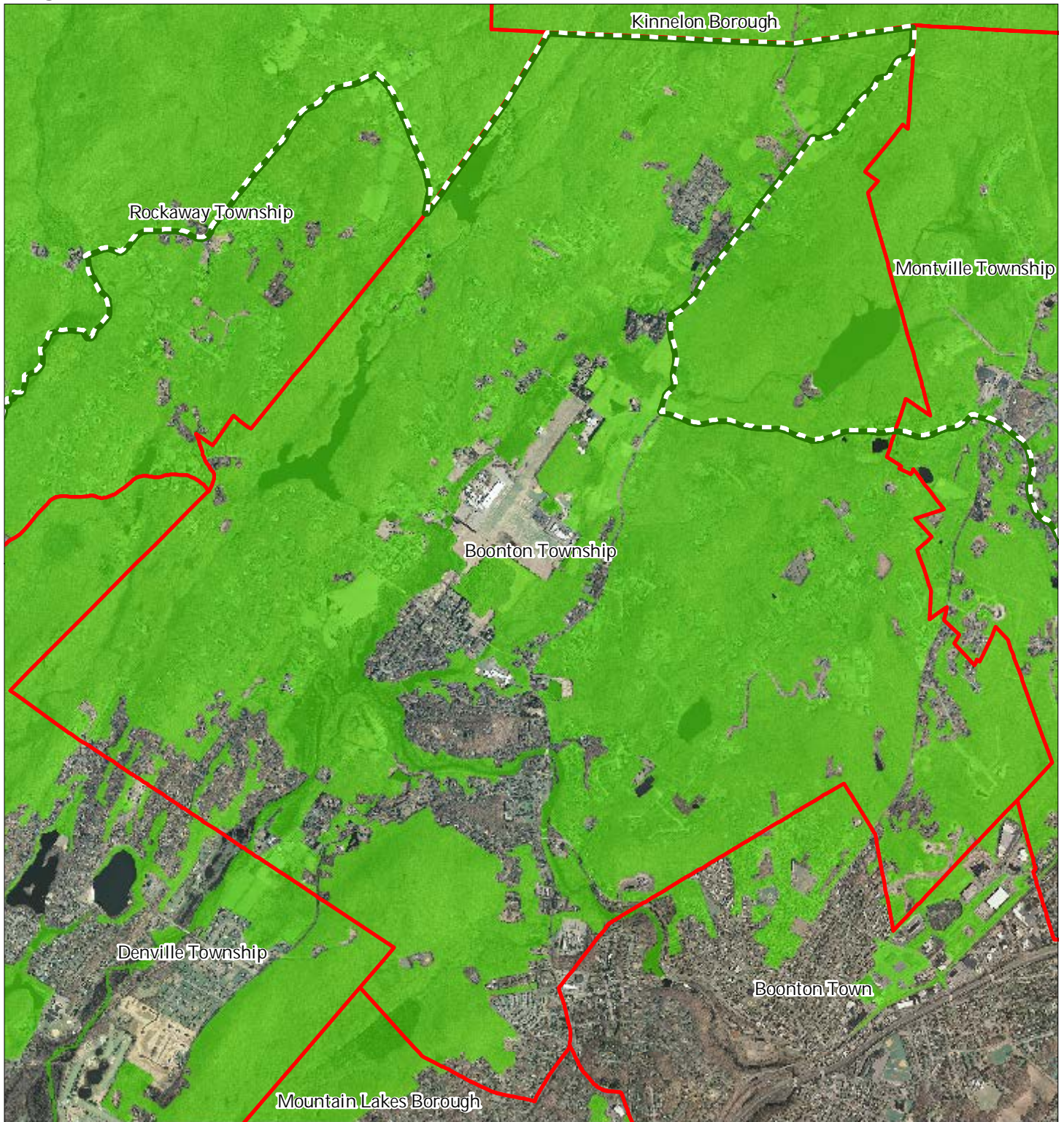
Boonton Township






1 inch = 0.491 miles

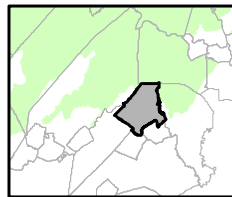
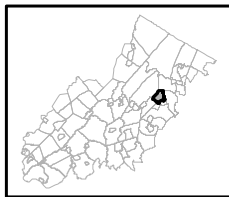


Figure 12: Critical Wildlife Habitat



-  Critical Wildlife Habitat
-  Preservation Area
-  Municipal Boundaries

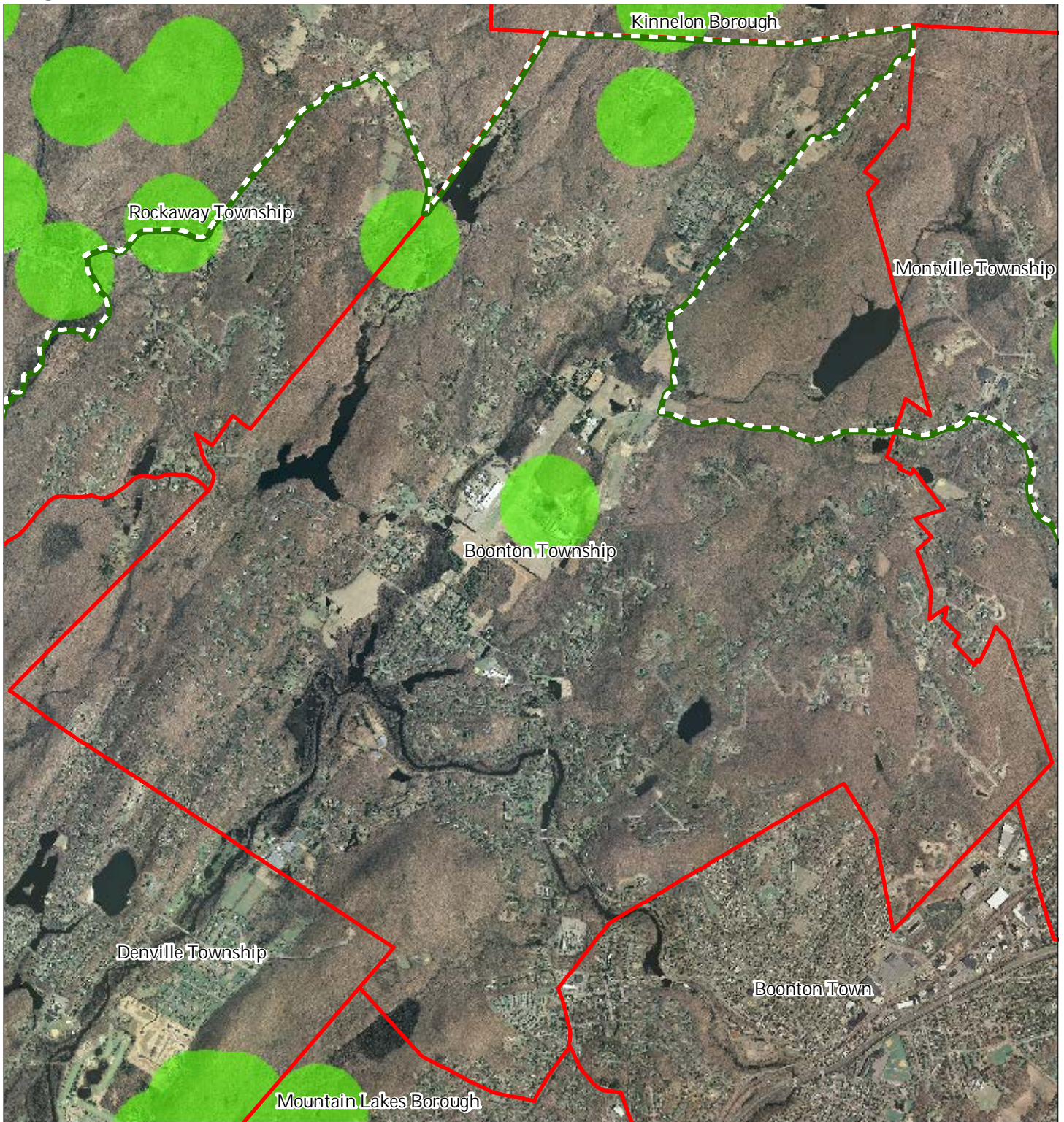
Boonton Township






1 inch = 0.491 miles

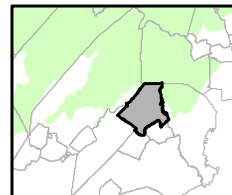
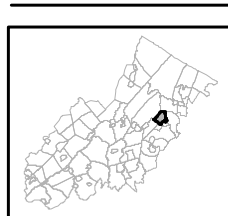


Figure 14: Vernal Pools



-  Vernal Pools + 1000ft Buffer
-  Preservation Area
-  Municipal Boundaries

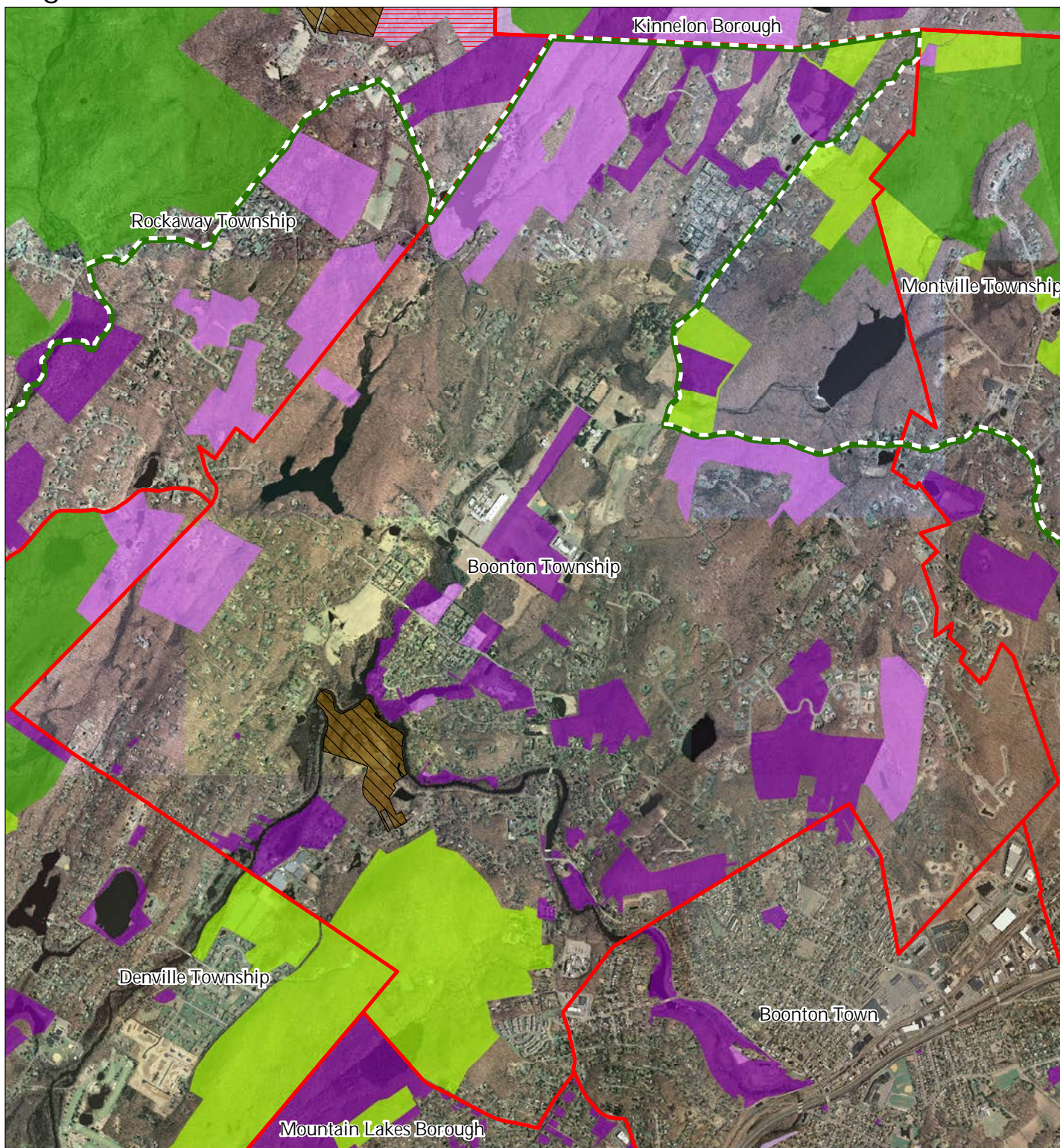
Boonton Township



1 inch = 0.491 miles

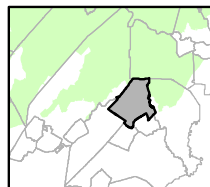
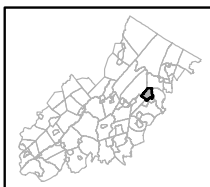


Figure 15: Preserved Lands



- | | |
|-----------------------------------------|-------------------------------|
| Preserved Lands | Conservation Easements |
| Federal Open Space | Green Acres |
| State Open Space | SADC Easements |
| County Open Space | SADC Final |
| Municipal Open Space | SADC Preserved |
| Non-Profit/Private Open Space | Municipal Boundaries |
| Water Supply Watershed | Preservation Area |
| Preserved Farmland | |
| Highlands Transfer of Development Lands | |

Boonton Township

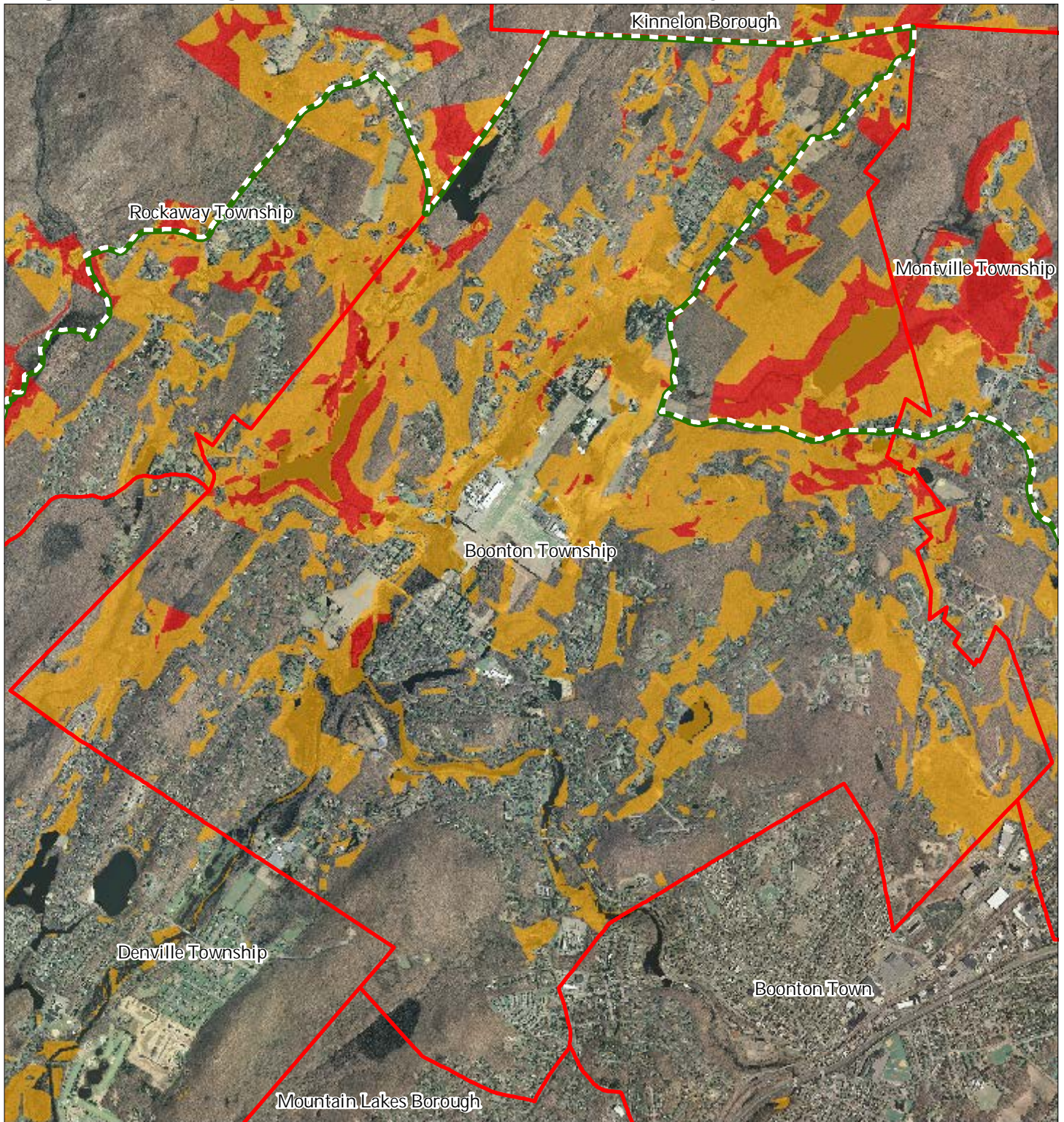


1 inch = 0.491 miles







February 2015

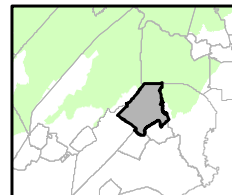
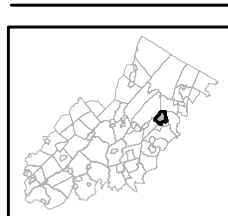
Figure 16: Highlands Conservation Priority Areas



Conservation Priority Area

-  Moderate
-  High
-  Preservation Area
-  Municipal Boundaries

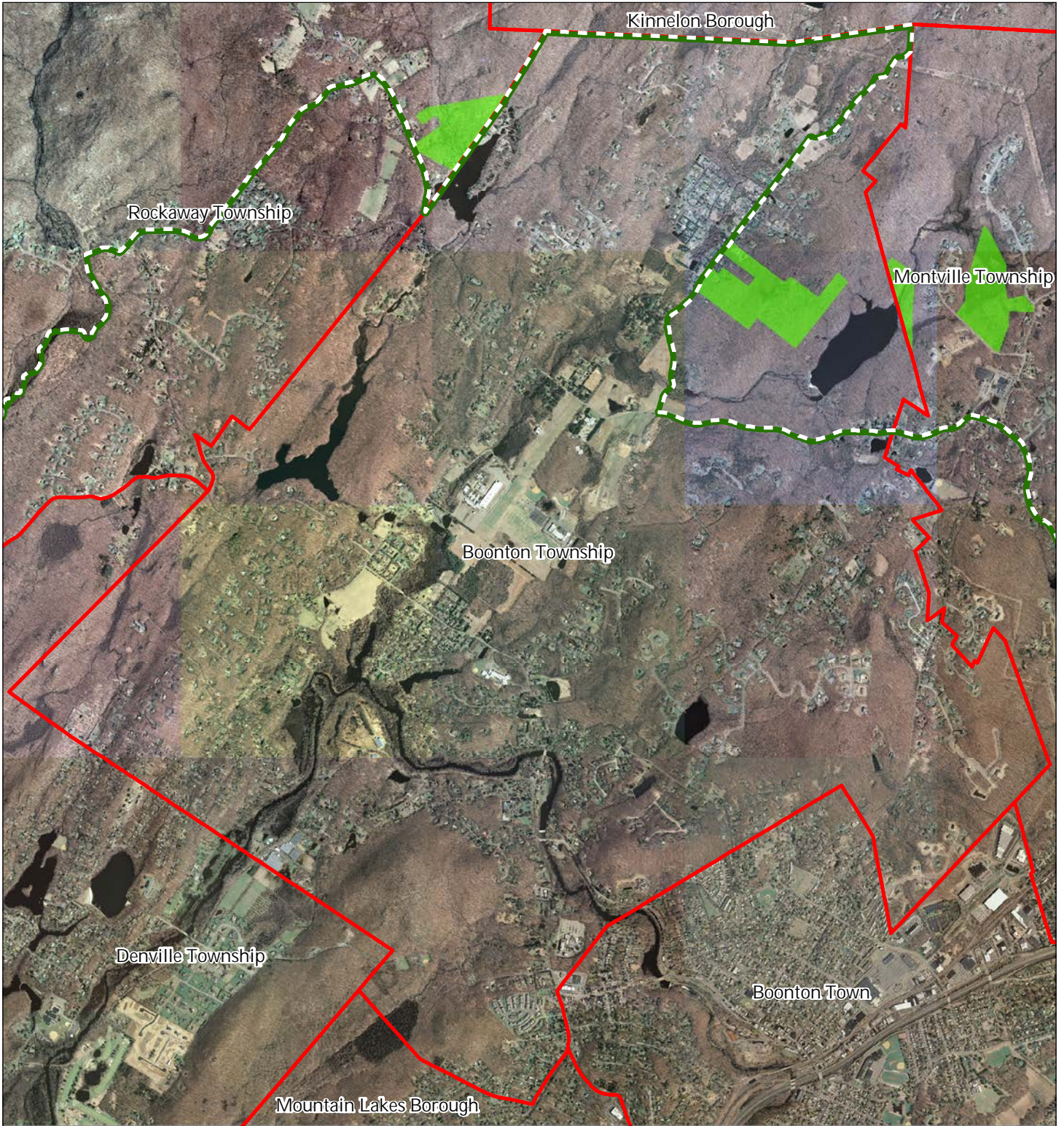
Boonton Township



1 inch = 0.491 miles

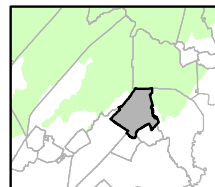
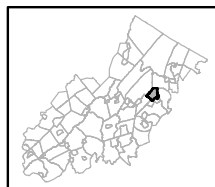


Figure 17: Highlands Special Environmental Zone



- Special Environmental Zones
- Preservation Area Municipal
- Boundaries

Boonton Township



1 inch = 0.491 miles

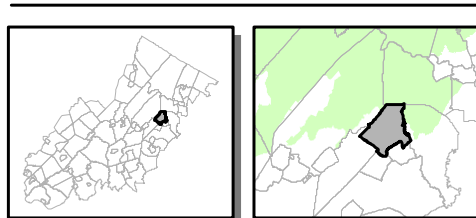


Figure 19: Lake Management Area



- Lakes & Ponds
- Lake Management Area
- Preservation Area
- Municipal Boundaries

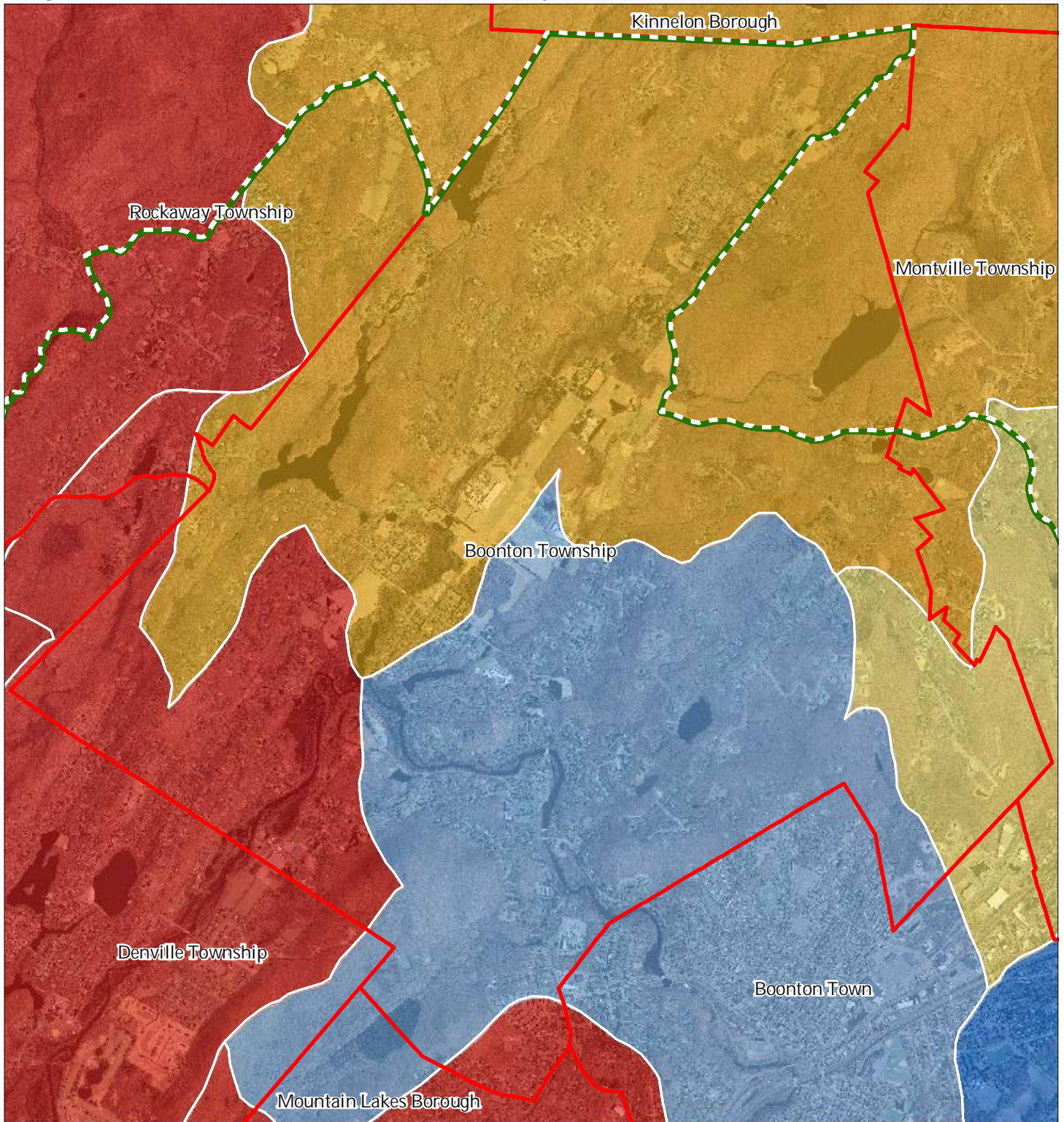
Boonton Township



1 inch = 0.491 miles



Figure 20: Net Water Availability



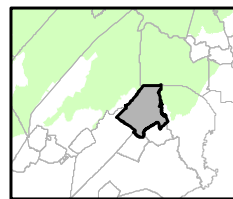
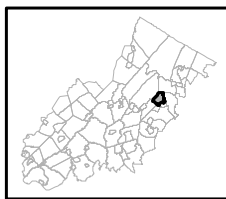
Net Water Availability By HUC14

Million Gallons Per Day (MGD)

- 0.10 - 0.39
- 0.05 - 0.09
- 0.00 - 0.04
- 0.09 - 0.00
- 0.99 - -0.10
- 7.10 - -1.00

- Preservation Area
- Municipal Boundaries

Boonton Township

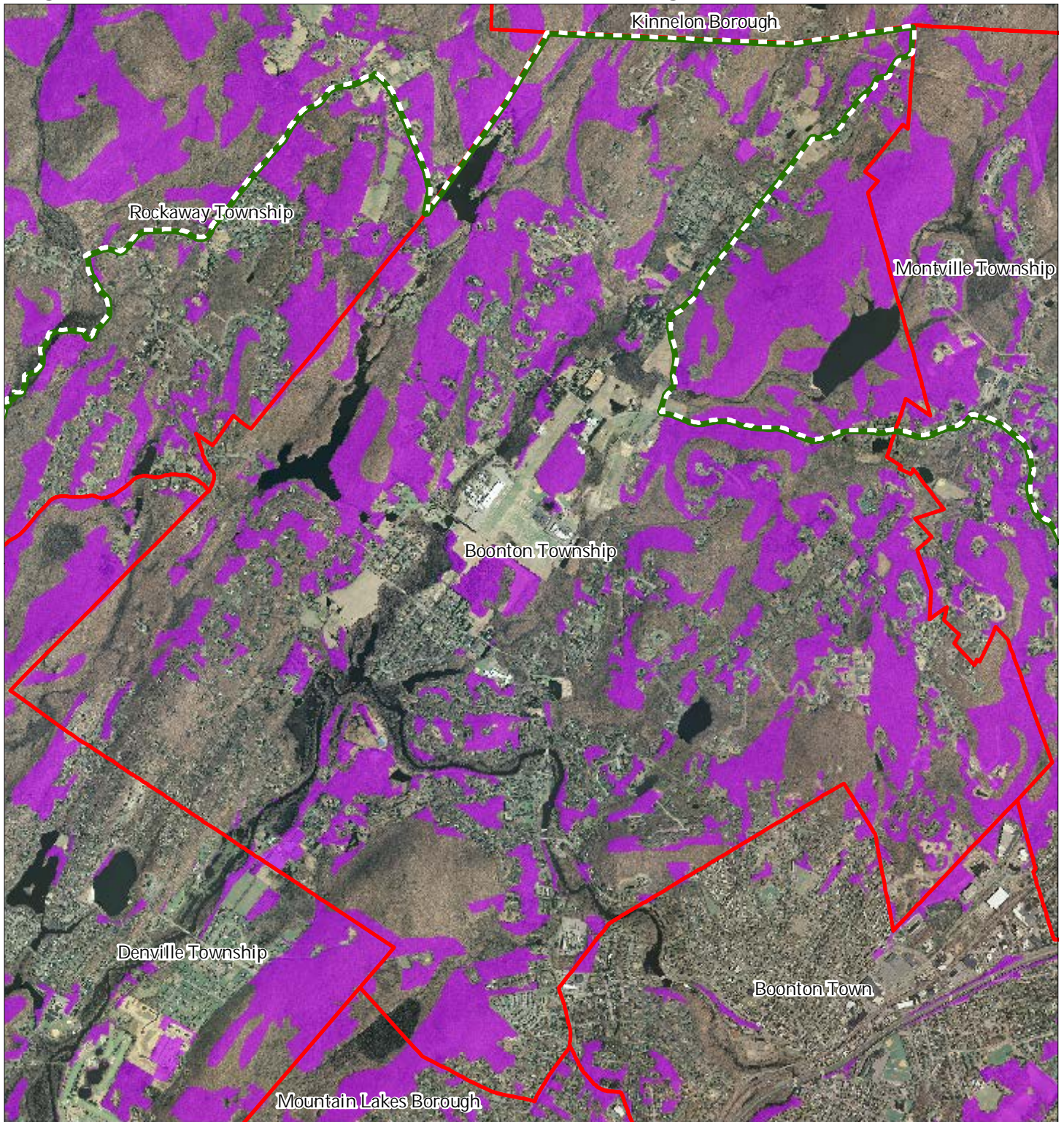





1 inch = 0.491 miles



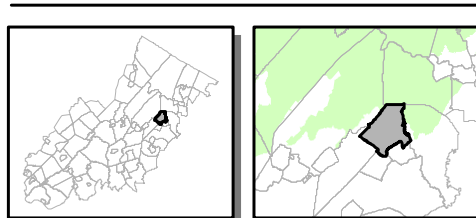
July 2015

Figure 21: Prime Ground Water Recharge Areas



-  Prime Ground Water Recharge
-  Areas Preservation Area
-  Municipal Boundaries

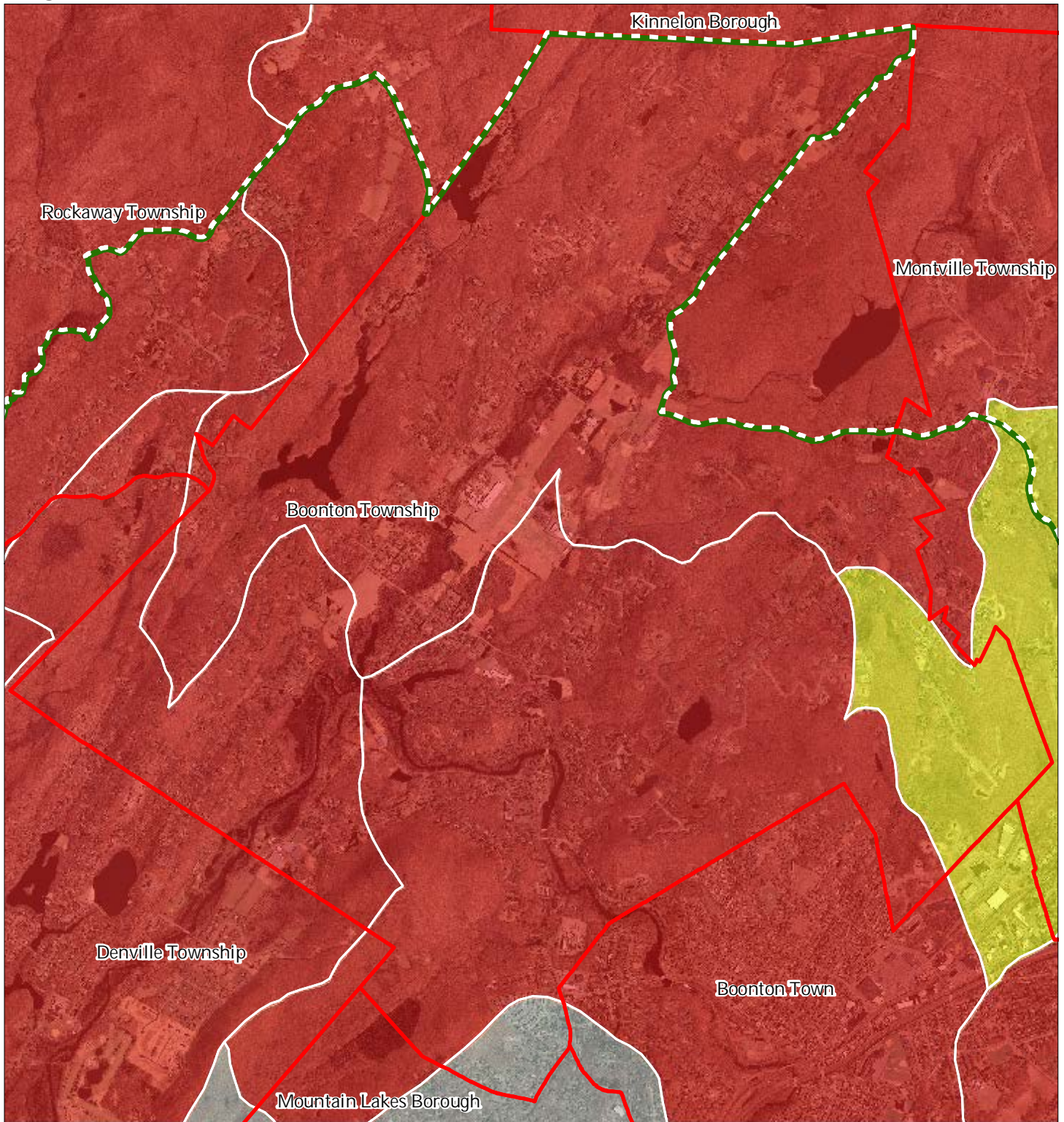
Boonton Township



1 inch = 0.491 miles



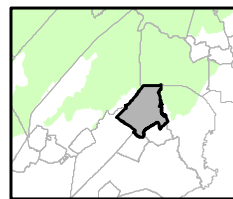
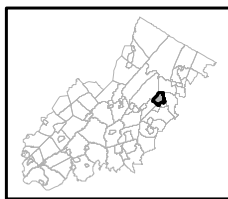
Figure 22: HUC 14s on NJDEP Impaired Waters List



Impaired Waters Overall Assessment by HUC14 Subwatershed

- Non Impacted*
- Insufficient Data Available*
- Moderate*
- Water Quality Impaired*
- Preservation Area
- Municipal Boundaries

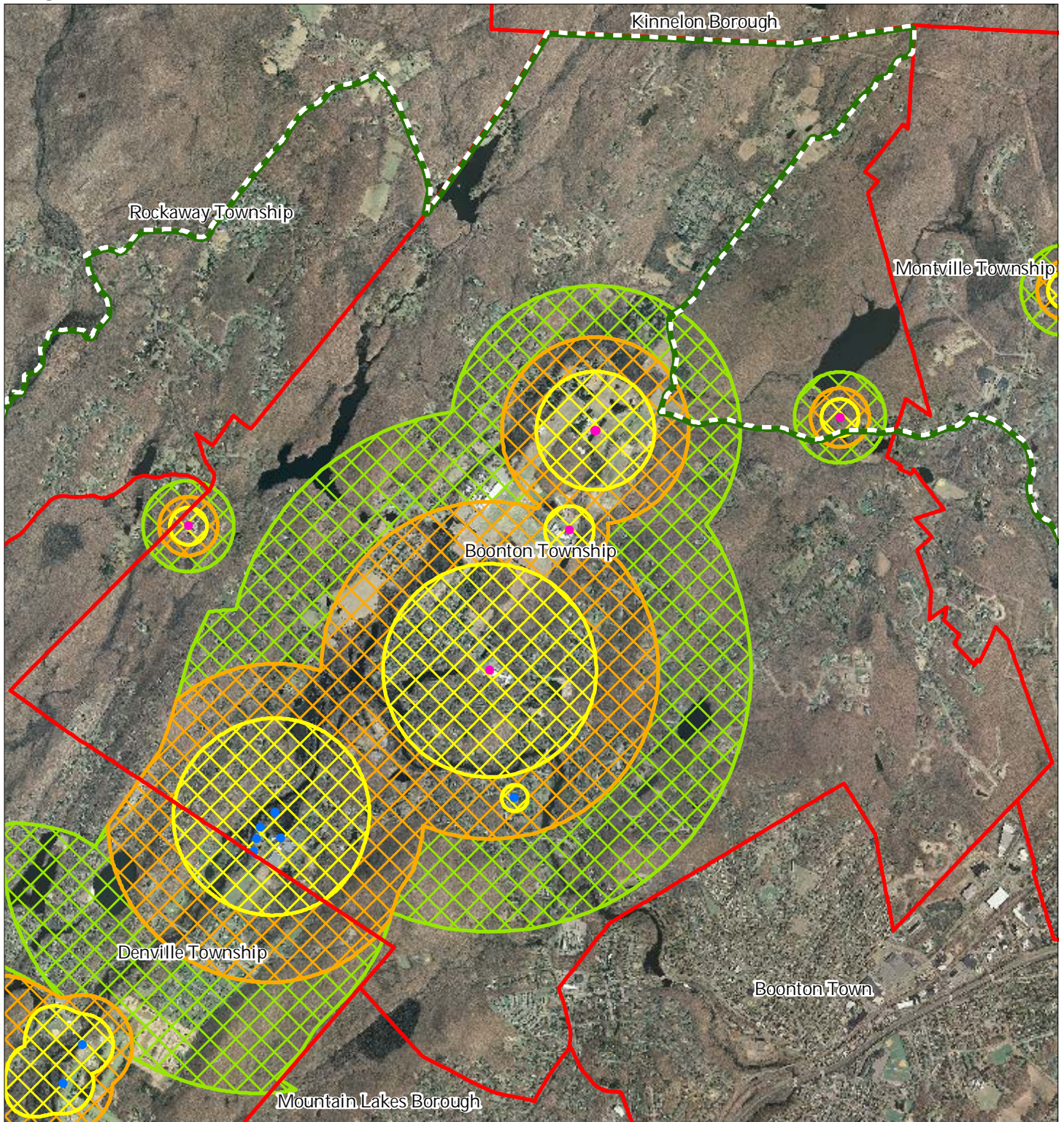
Boonton Township



1 inch = 0.491 miles



Figure 23: Wellhead Protection Areas



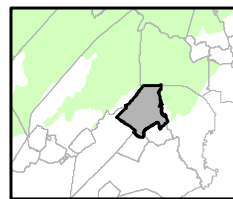
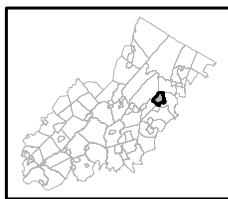
Boonton Township

- Public Community Wells
- Public Non-Community Wells

Wellhead Protection Areas

- 2-Year Tier
- 5-Year Tier
- 12-Year Tier

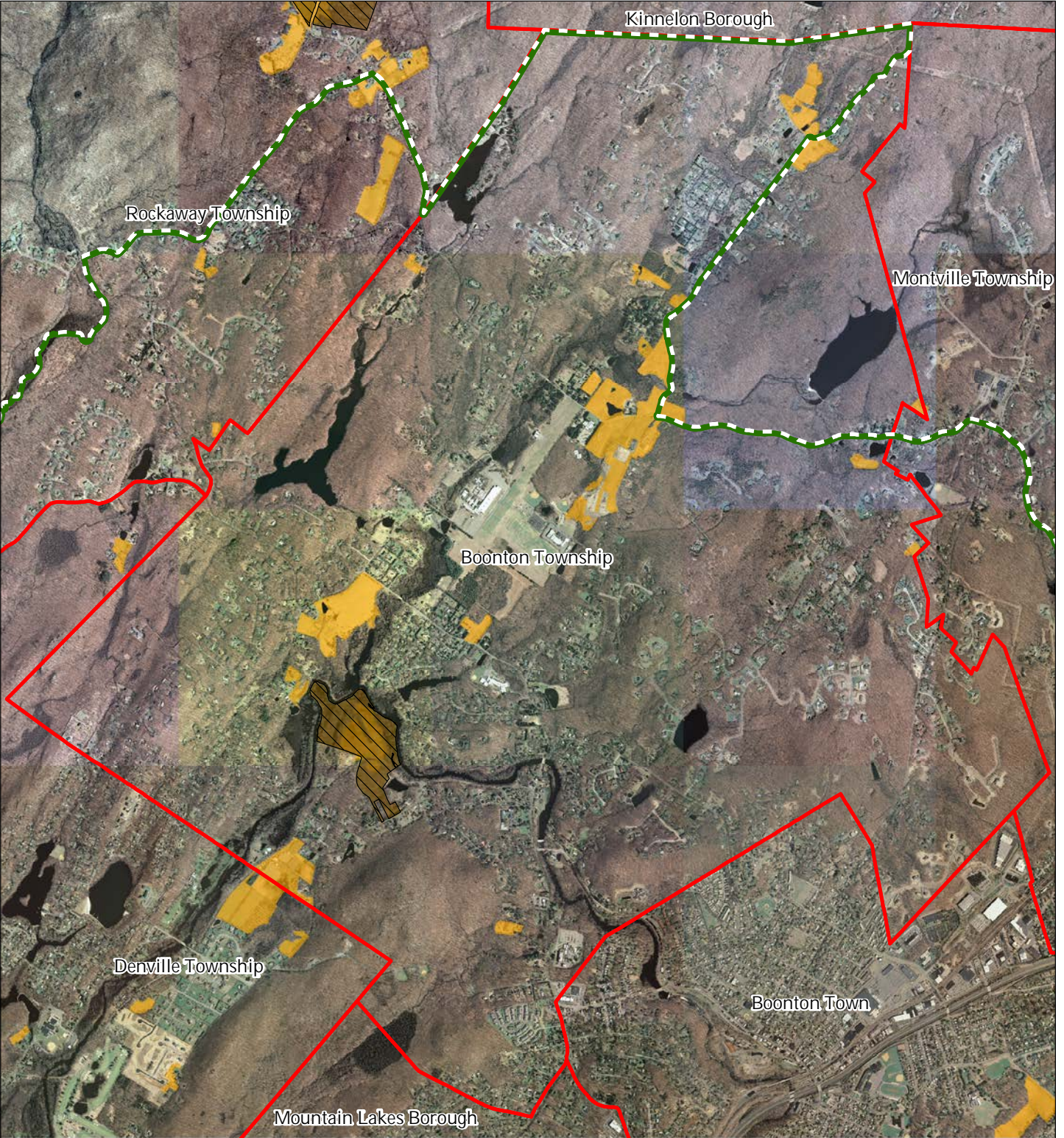
- Preservation Area
- Municipal Boundaries



1 inch = 0.491 miles



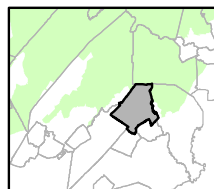
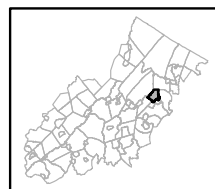
Figure 26: Preserved Farms, SADC Easements, All Agricultural Uses



SADC Easements

-  *SADC Final*
-  *SADC Preserved*
-  Preserved Farmland
-  Agriculture Uses
-  Preservation Area
-  Municipal Boundaries

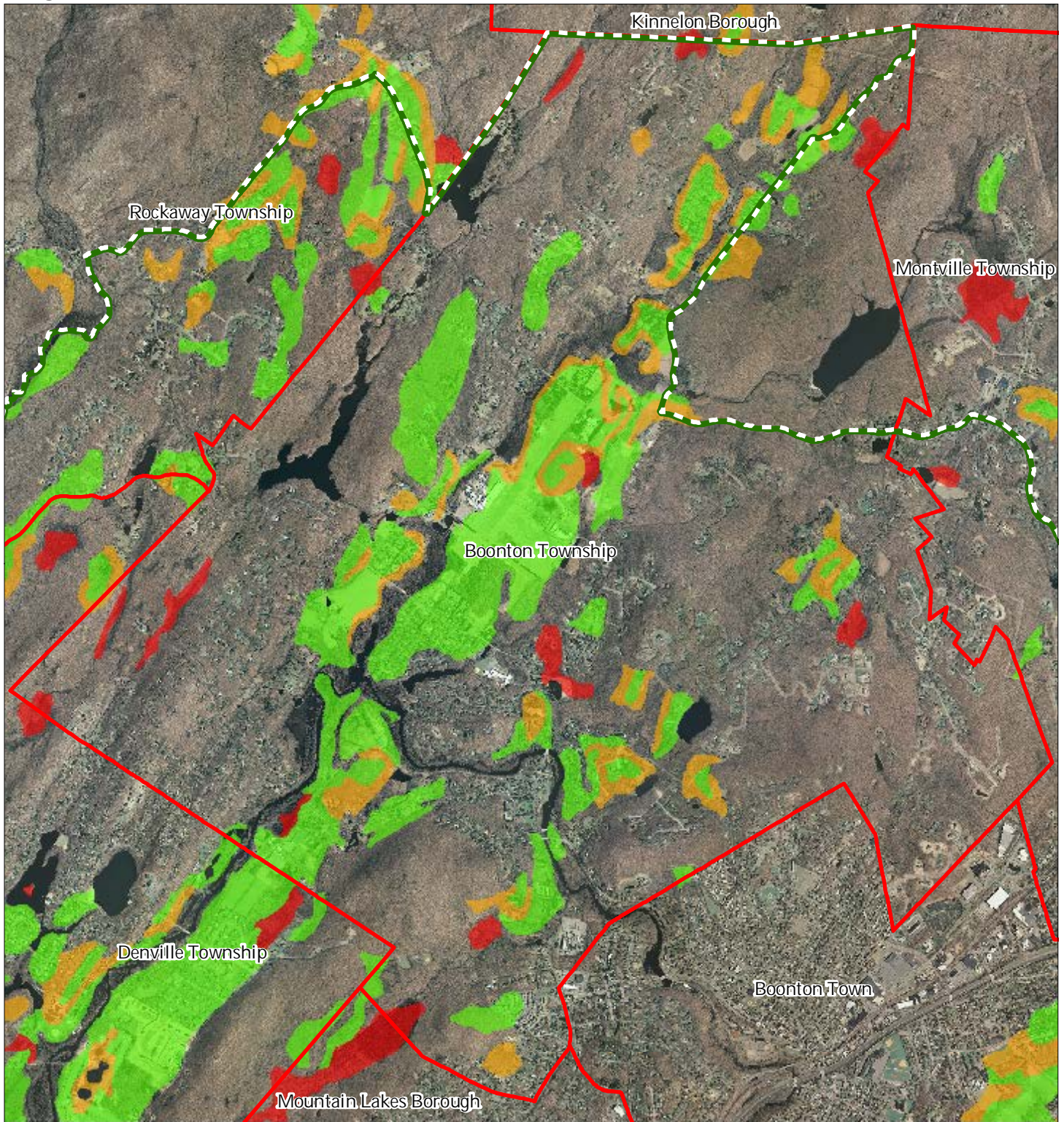
Boonton Township



1 inch = 0.491 miles



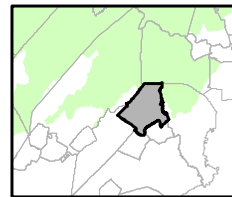
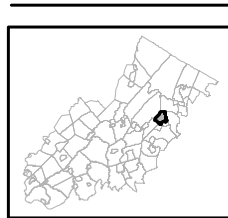
Figure 27: Important Farmland Soils



Important Farmland Soils

-  Prime Farmland
-  Farmland of Local Importance
-  Farmland of Statewide Importance
-  Farmland of Unique Importance
-  Preservation Area
-  Municipal Boundaries

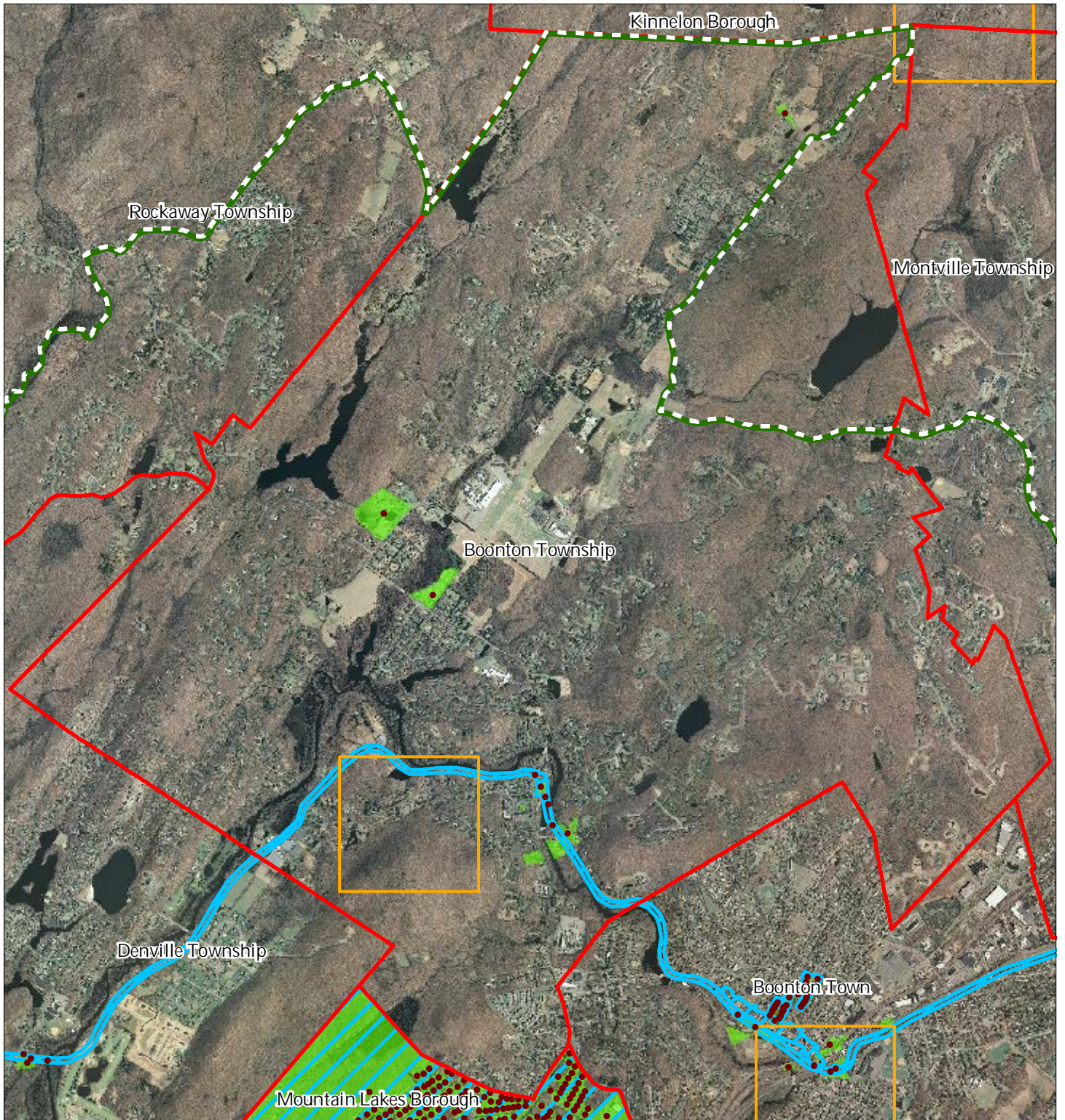
Boonton Township



1 inch = 0.491 miles

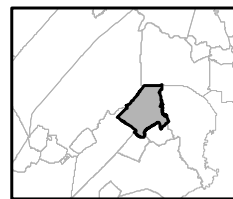
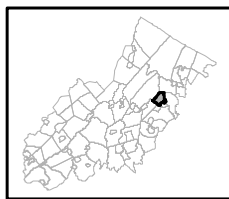


Figure 28: Historic, Cultural, and Archaeological Resources Inventory



-  Preservation Area
-  Municipal Boundaries
-  Archaeological Grids (1 sqmi)
-  NJ Historic Districts
-  Historic Property Points
-  Historic Property Polygons

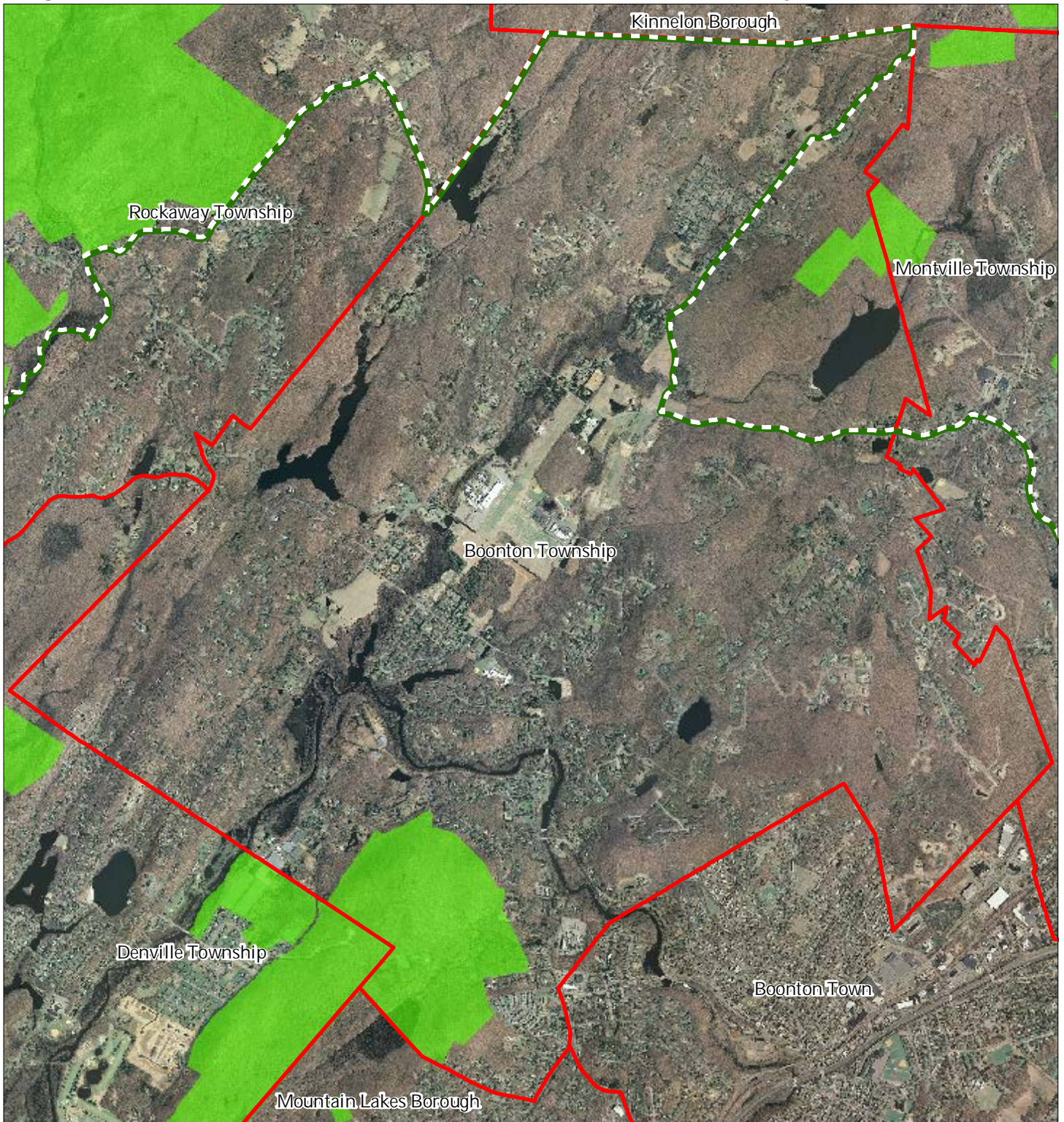
Boonton Township






1 inch = 0.491 miles

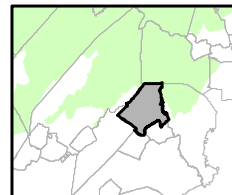
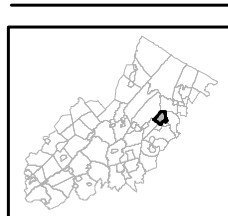


Figure 29: Baseline Scenic Resources Inventory



-  Scenic Resources
-  Municipal Boundaries
-  Preservation Area

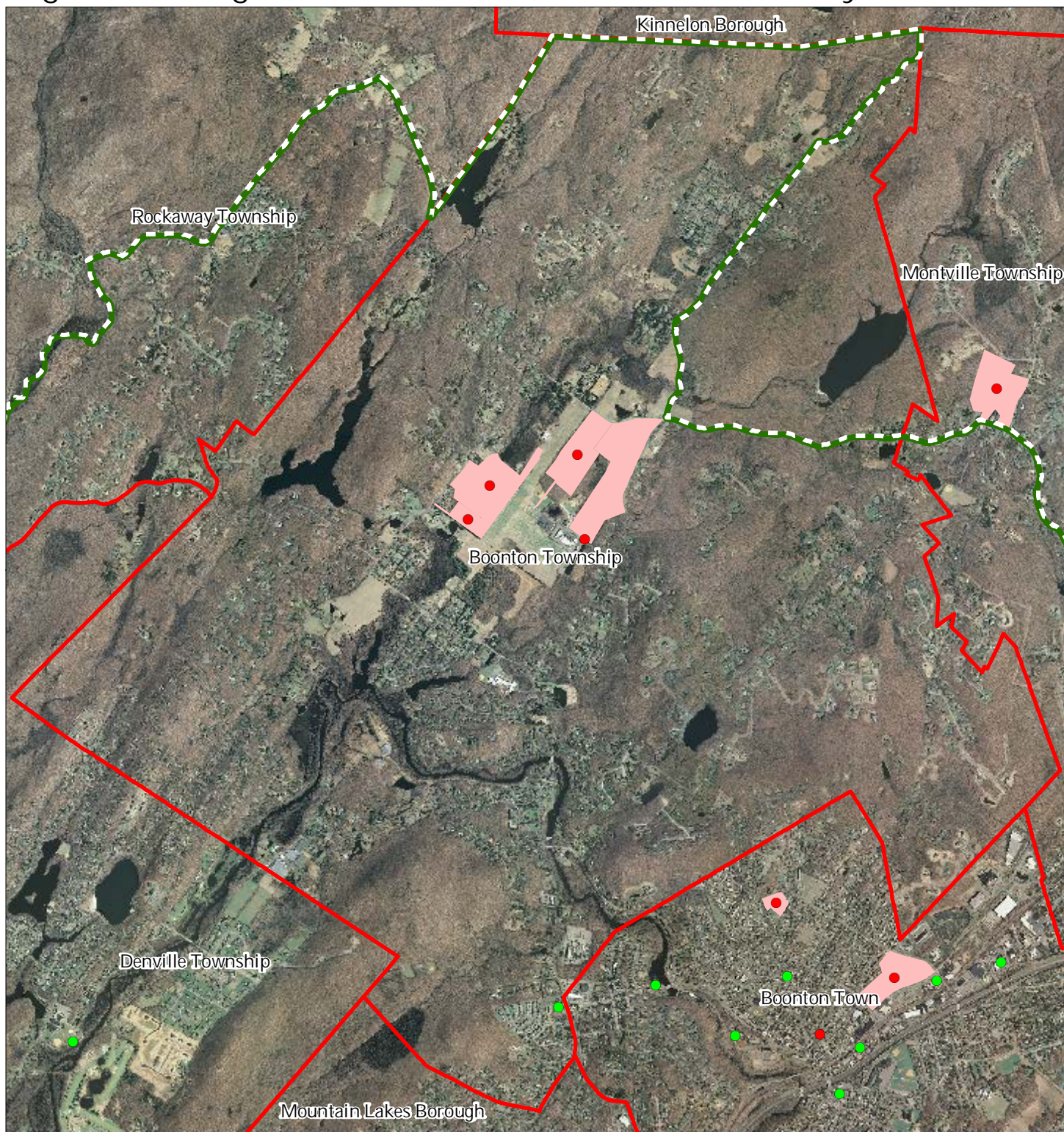
Boonton Township



1 inch = 0.491 miles



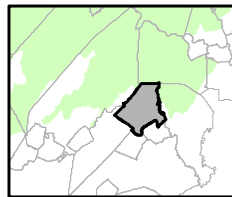
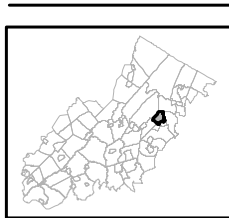
Figure 30: Highlands Contaminated Site Inventory



Highlands Contaminated Site Inventory

- Tier 1 Sites
- Tier 1 Sites (Polygons)
- Tier 2 Sites
- Preservation Area
- Municipal Boundaries

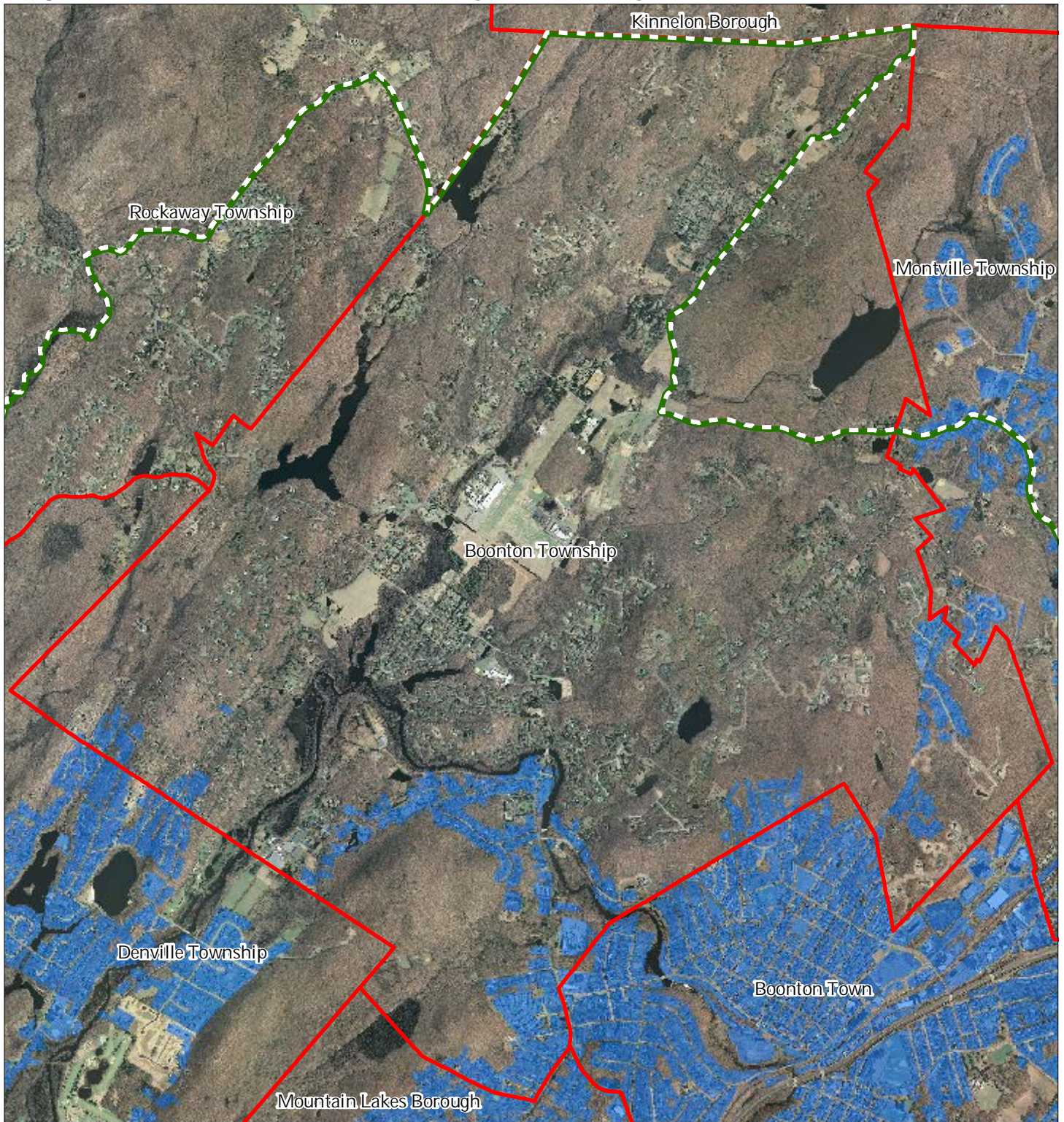
Boonton Township






1 inch = 0.491 miles

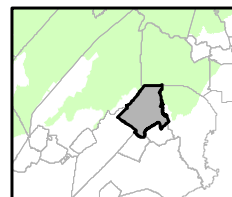
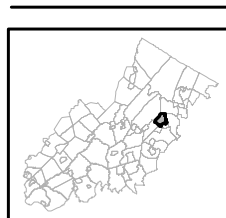


Figure 31: Public Community Water Systems



-  Public Community Water Systems
-  Preservation Area
-  Municipal Boundaries

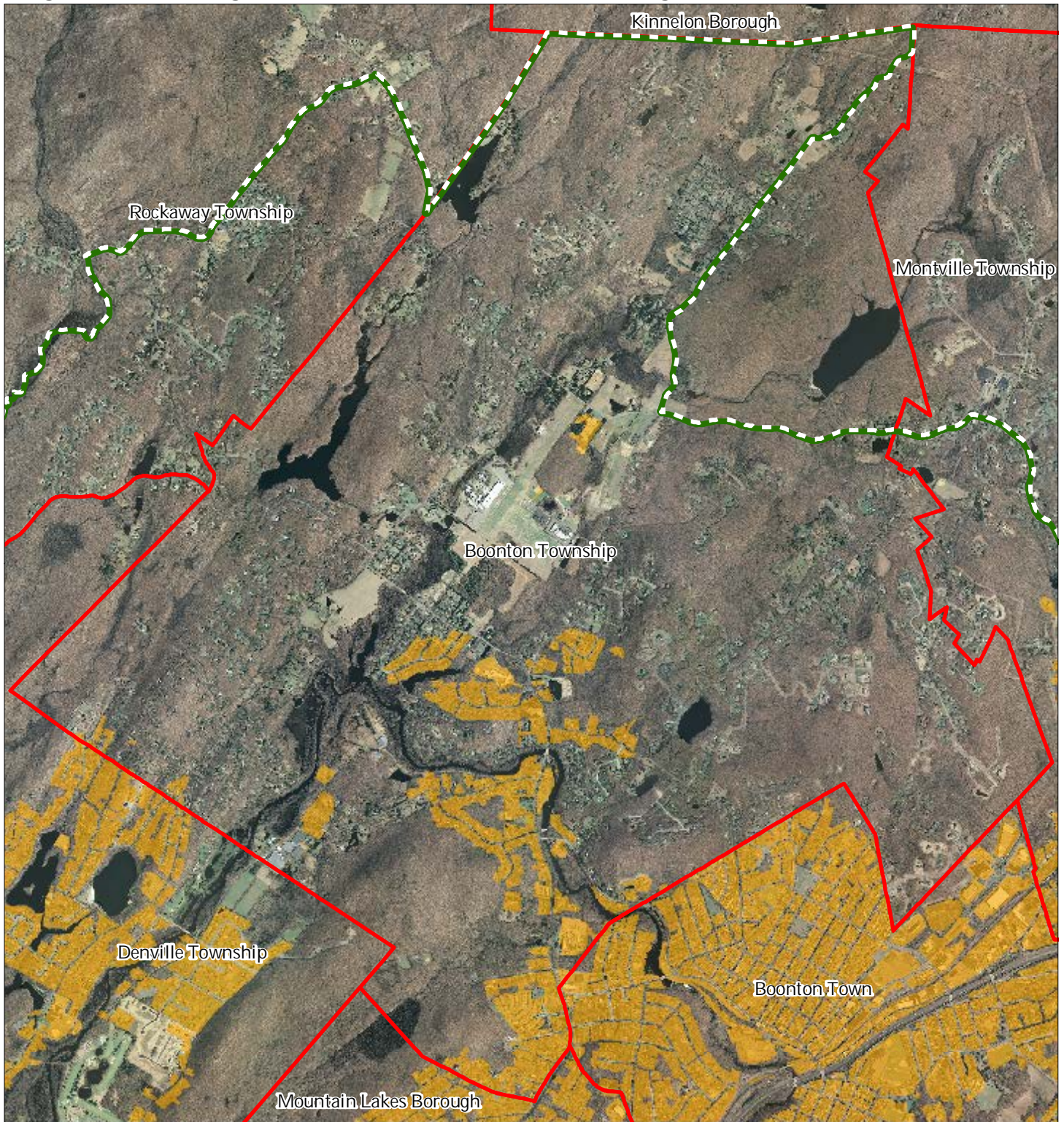
Boonton Township






1 inch = 0.491 miles



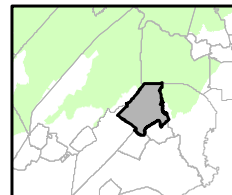
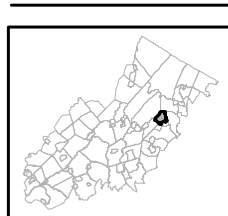
Figure 32: Highlands Domestic Sewerage Facilities



Highlands Domestic Sewerage Facilities

-  Existing Area Served
-  Preservation Area
-  Municipal Boundaries

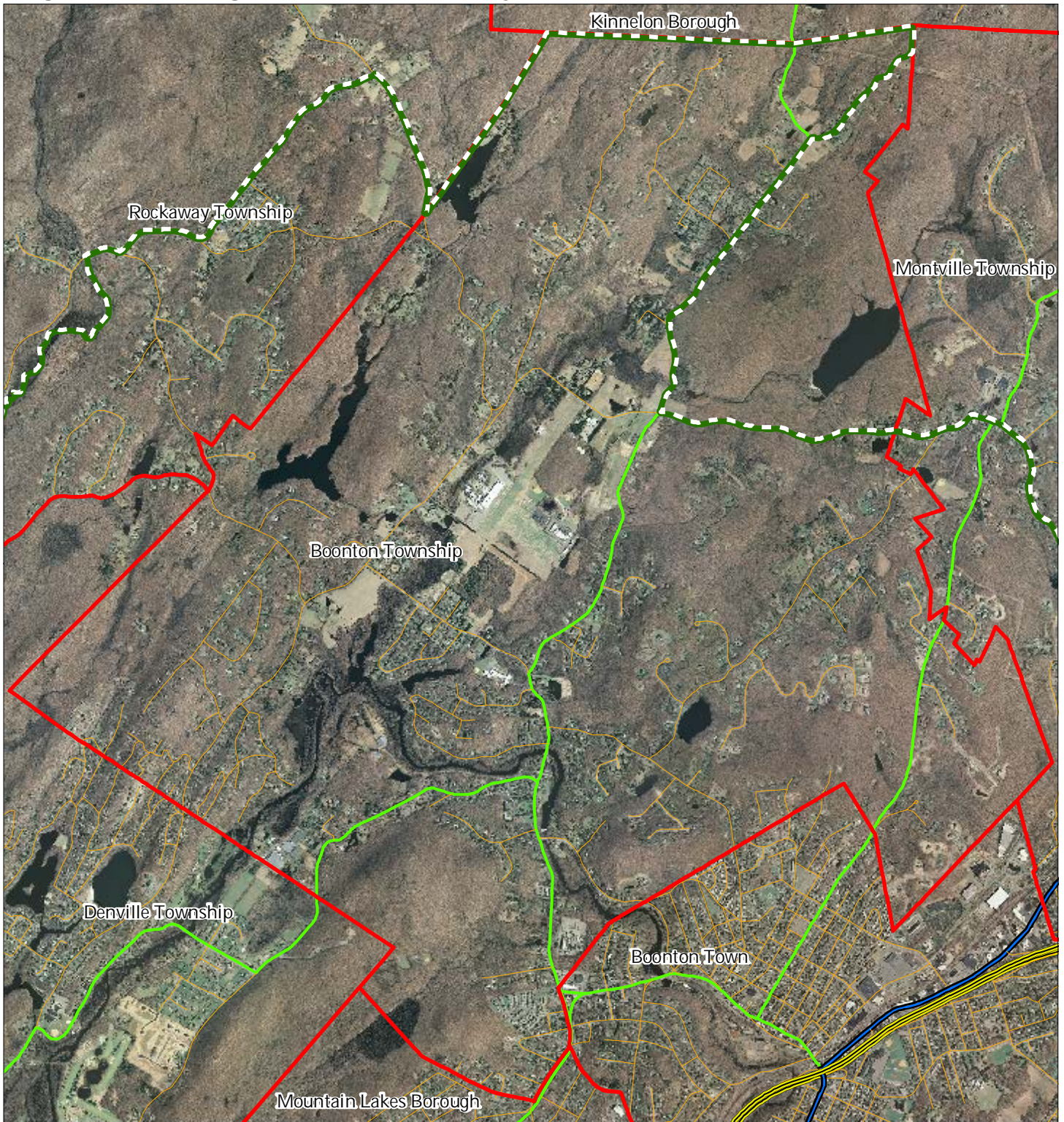
Boonton Township








1 inch = 0.491 miles





Figure 33: Highlands Roadway Network

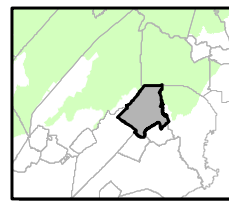


Roadway Network

-  Interstate Highways
-  U.S. Routes
-  State Routes
-  County Routes
-  Local Routes

-  Preservation Area
-  Municipal Boundaries

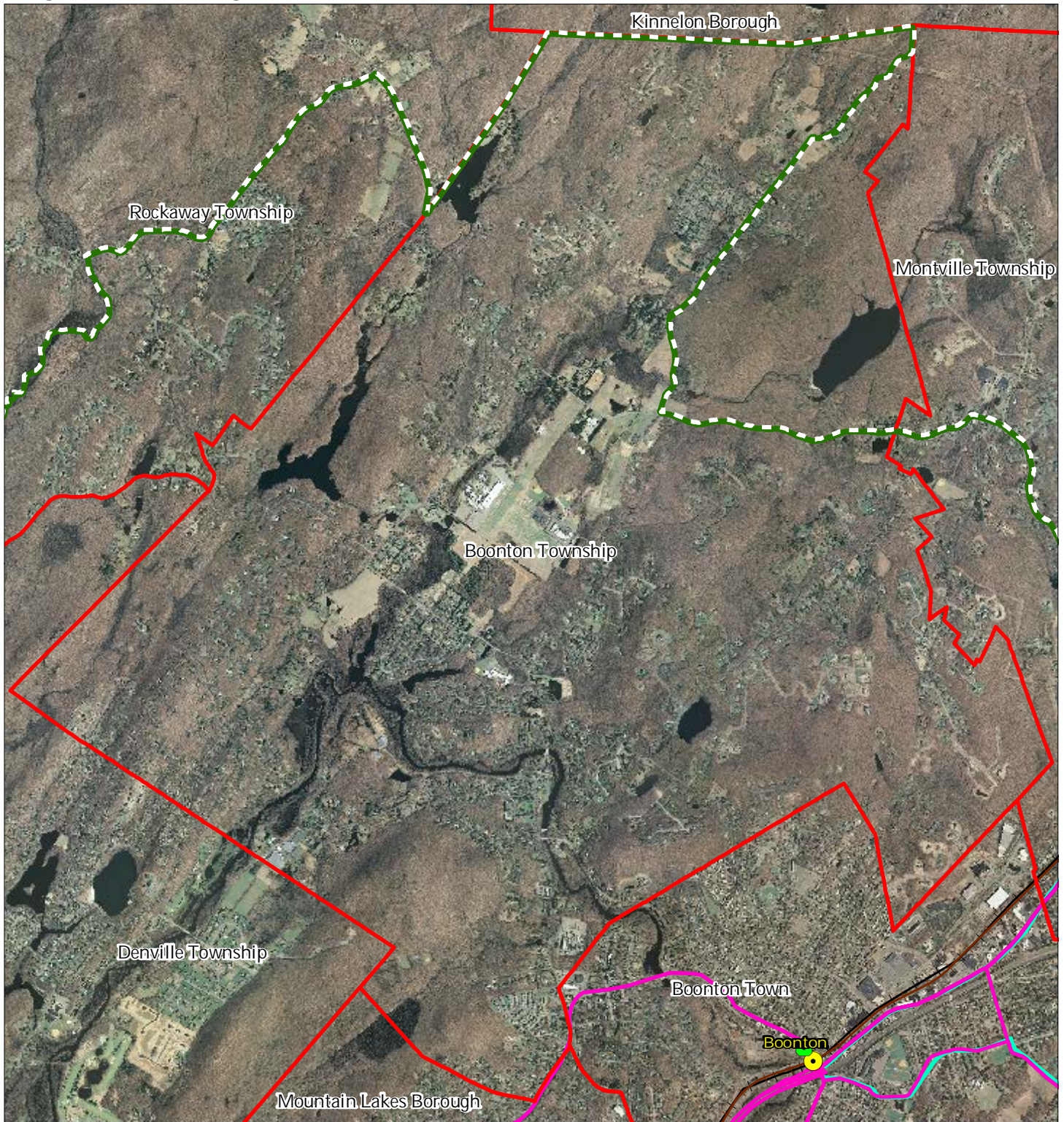
Boonton Township



1 inch = 0.491 miles

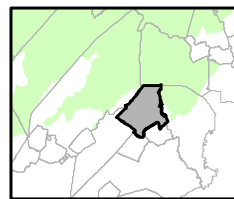
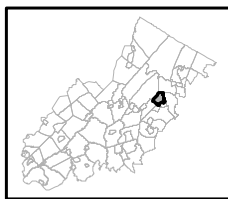


Figure 34: Highlands Transit Network



- | | |
|-------------------------------------------|----------------------|
| Rail Network | Rail Stations |
| <i>Boonton Line</i> | Park and Ride Sites |
| <i>Main Line & Bergen County Line</i> | Private Bus Lines |
| <i>Morris and Essex Line</i> | NJ Transit Bus Lines |
| <i>Raritan Valley Line</i> | Airports |
| Freight Rail Lines | |
| <i>Freight Rail Lines</i> | |
| <i>Abandoned Freight Rail</i> | |

Boonton Township



1 inch = 0.491 miles

