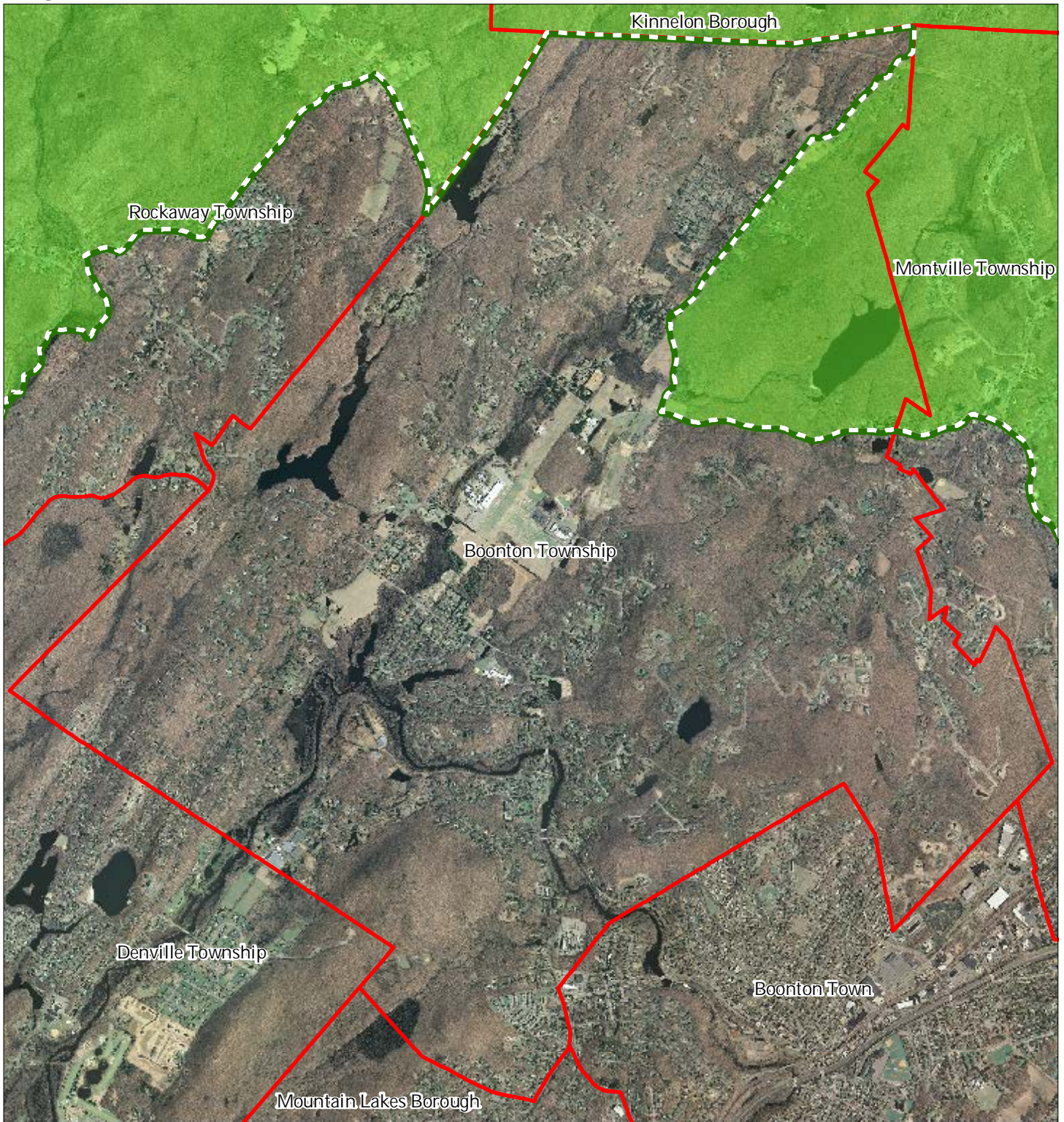


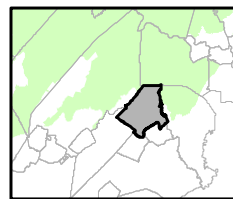
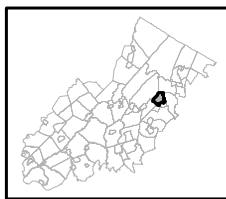


Figure 1: Preservation Area



-  Preservation Area
-  Municipal Boundaries

## Boonton Township



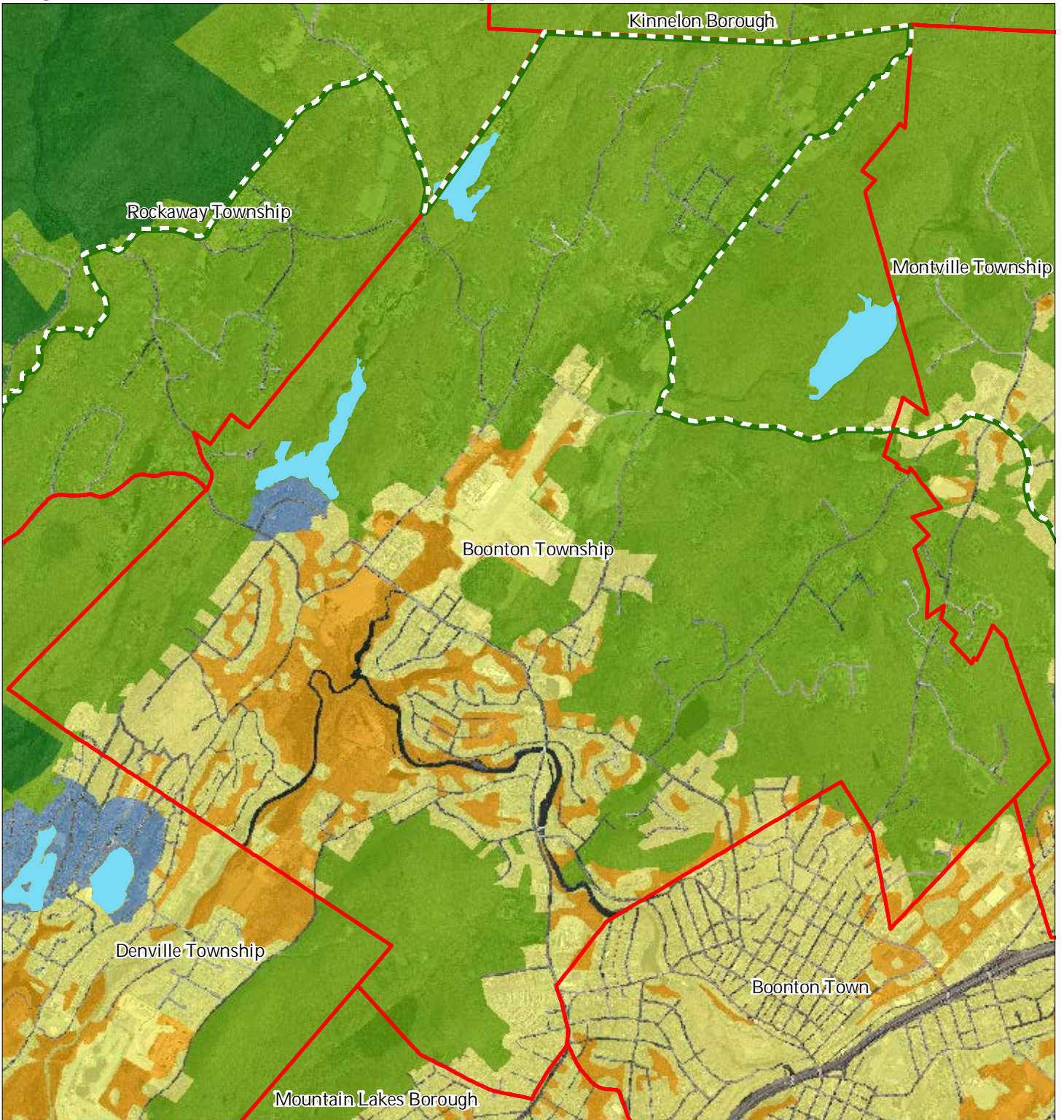
1 inch = 0.491 miles



February 2015



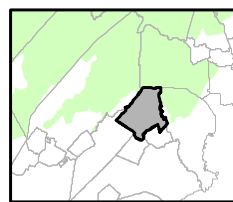
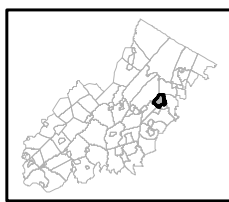
Figure 2: Land Use Capability Map Zones



Regional Master Plan Overlay Zone Designation

- |  |                             |
|--|-----------------------------|
| <b>Zone</b>                                    | Lakes Greater Than 10 acres |
| Protection                                     | Preservation Area           |
| Conservation                                   | Municipal Boundaries        |
| Existing Community                             |                             |
| <b>Sub-Zone</b>                                |                             |
| Existing Community Environmentally Constrained |                             |
| Conservation Environmentally Constrained       |                             |
| Lake Community                                 |                             |
| Wildlife Management                            |                             |

Boonton Township



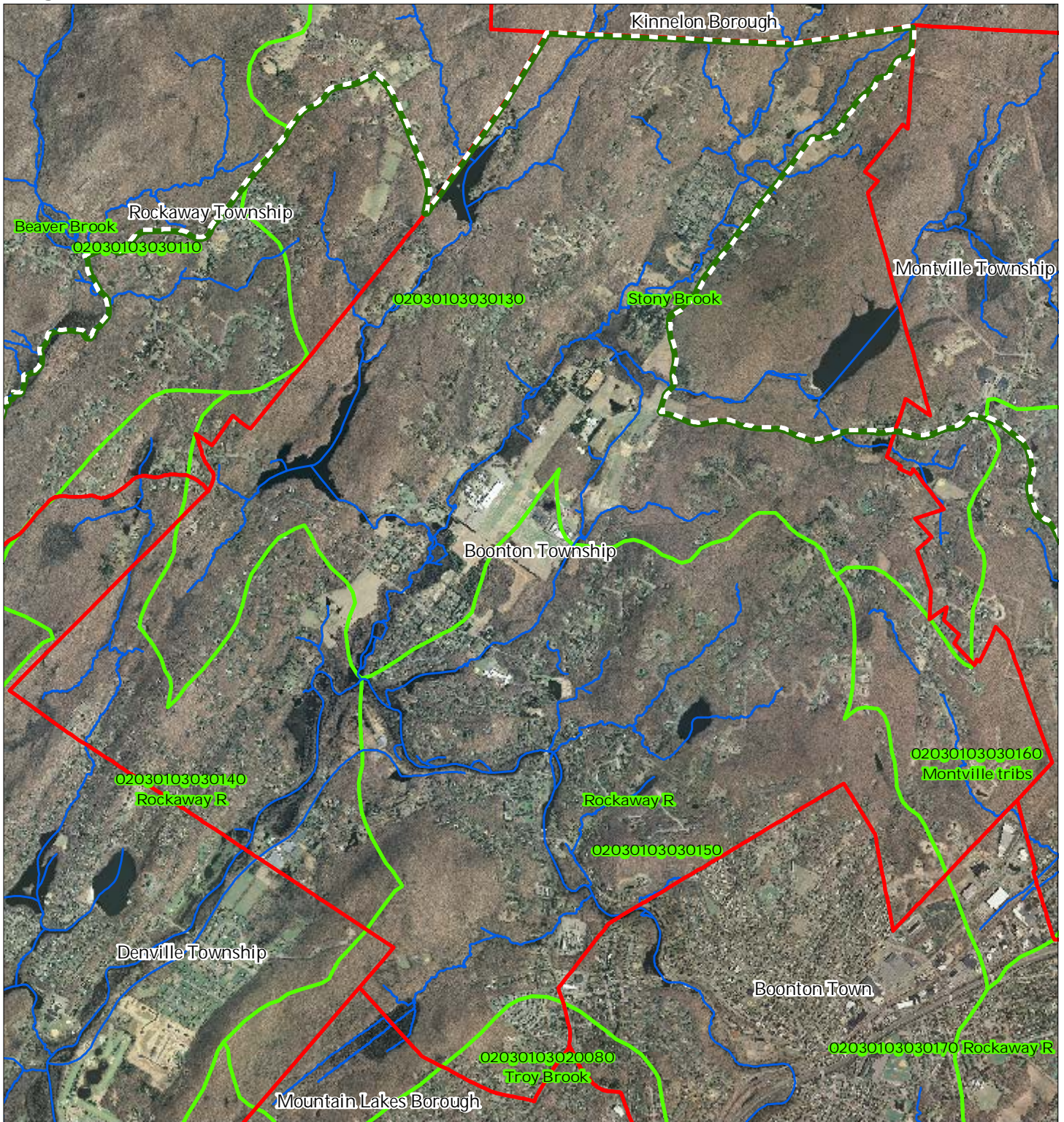
1 inch = 0.491 miles



February 2015

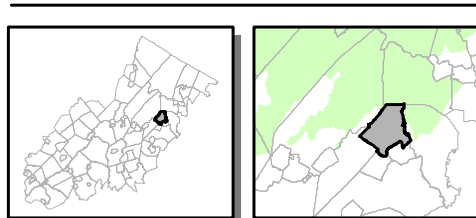


Figure 3: HUC 14 Boundaries



- HUC 14 Subwatersheds
- Stream Centerlines
- Preservation Area
- Municipal Boundaries

### Boonton Township



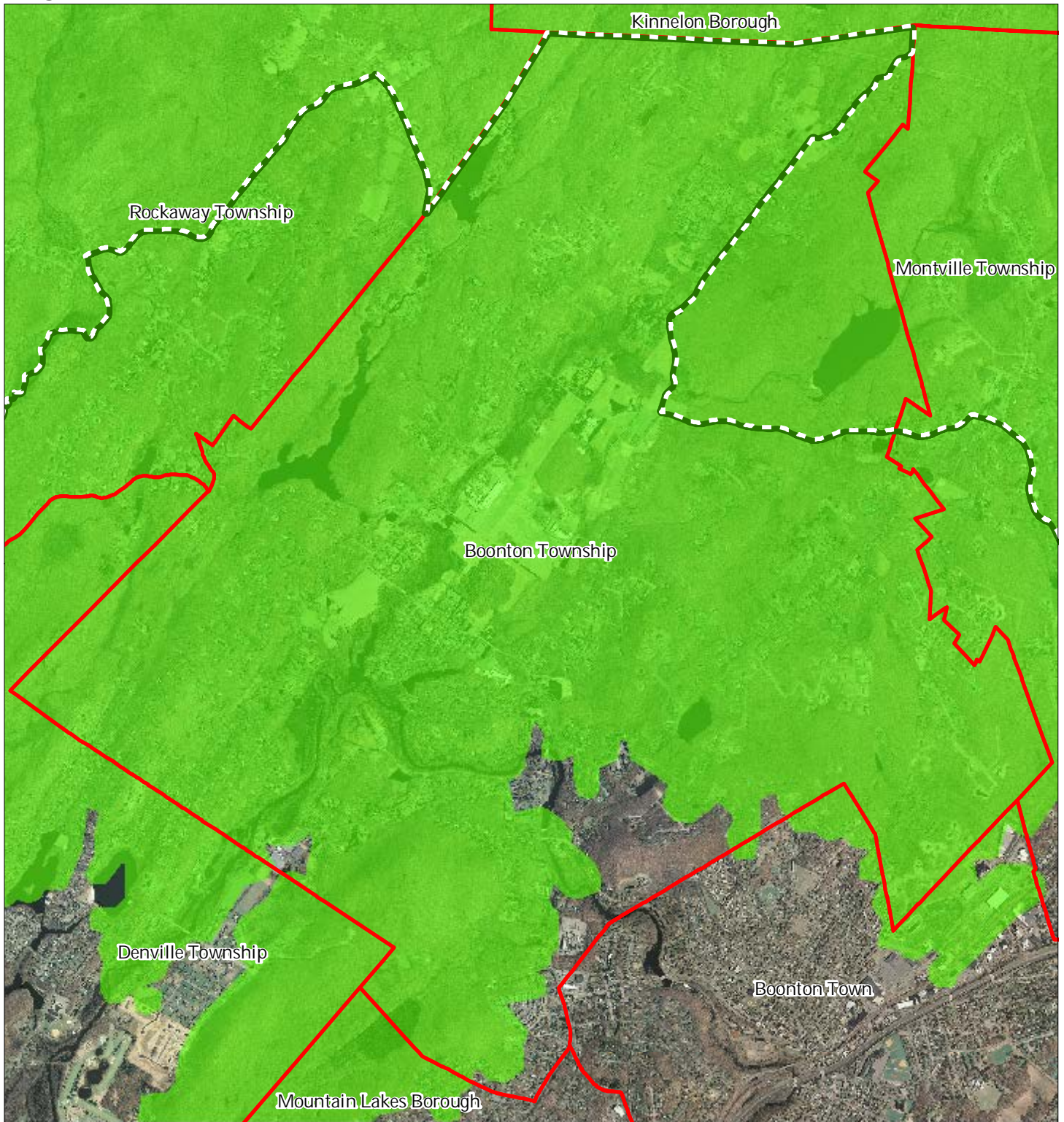
1 inch = 0.491 miles






February 2015

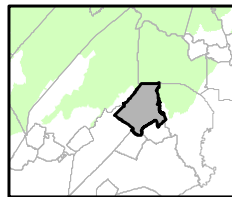
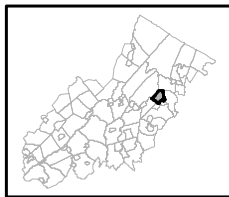


Figure 4: Forest Resource Area



-  Forest Resource Area
-  Preservation Area
-  Municipal Boundaries

## Boonton Township



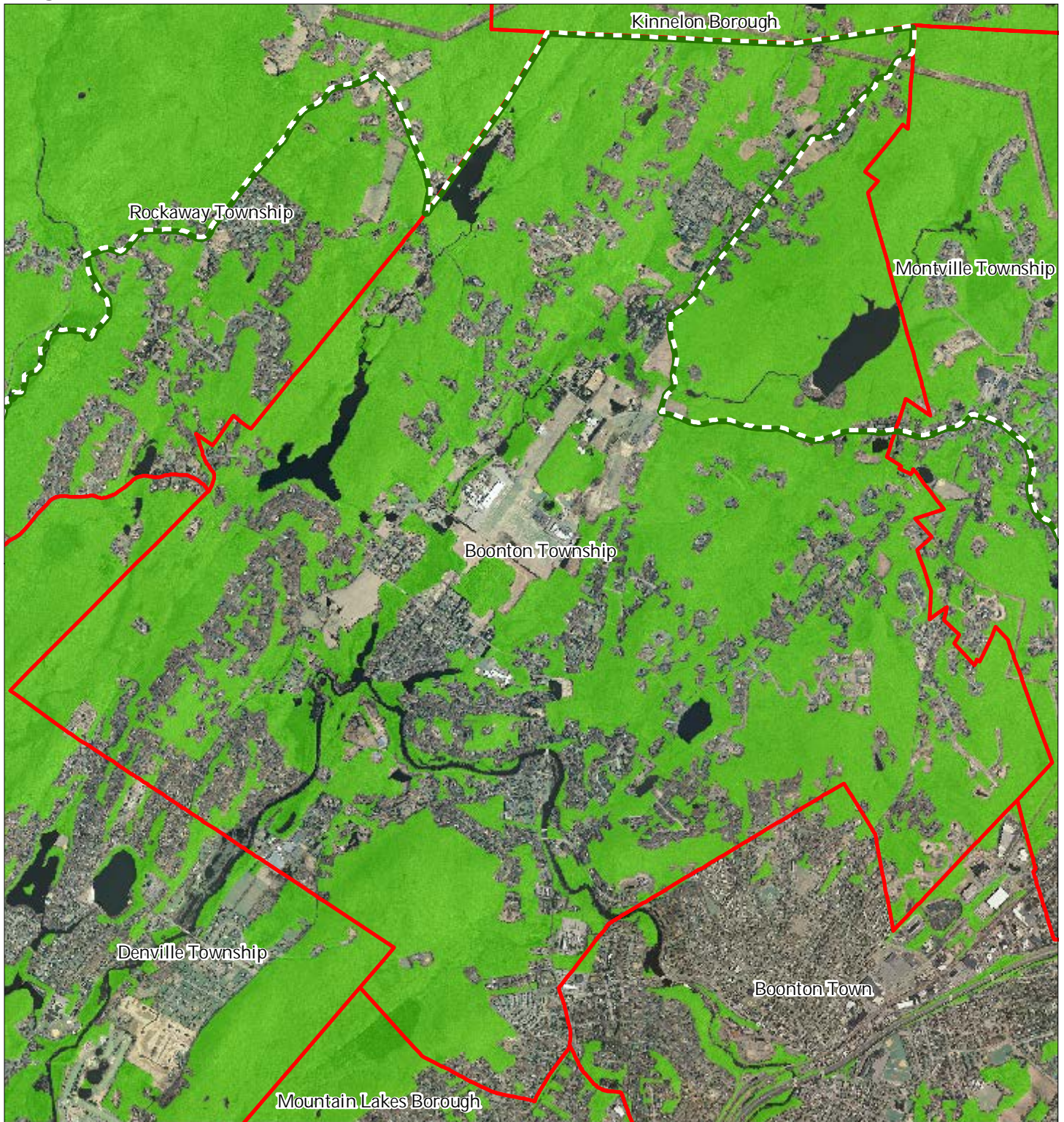
1 inch = 0.491 miles






February 2015

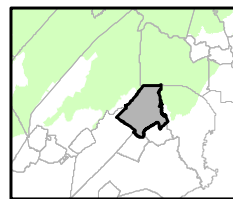
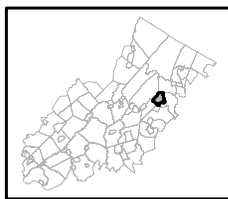


Figure 5: Total Forest Area



-  Forested Areas
-  Preservation Area
-  Municipal Boundaries

## Boonton Township



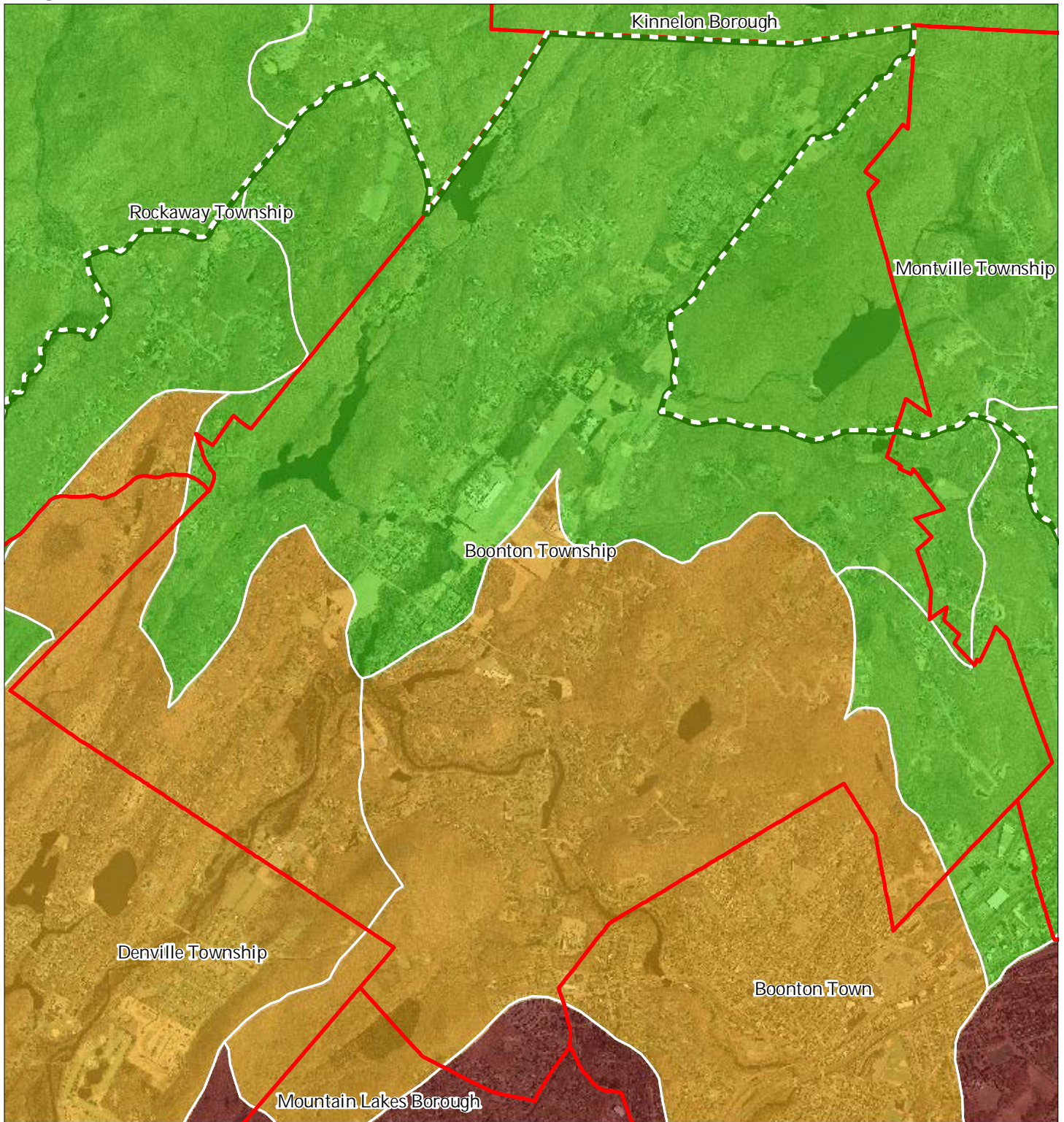
1 inch = 0.491 miles








February 2015



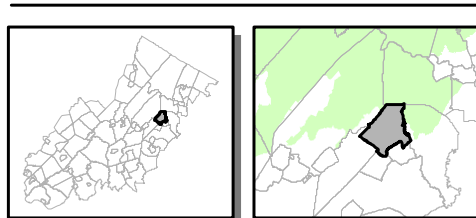
Figure 6: Forest Subwatersheds



Forest Integrity by HUC14 Subwatershed

-  *Low*
-  *Moderate*
-  *High*
-  Preservation Area
-  Municipal Boundaries

Boonton Township



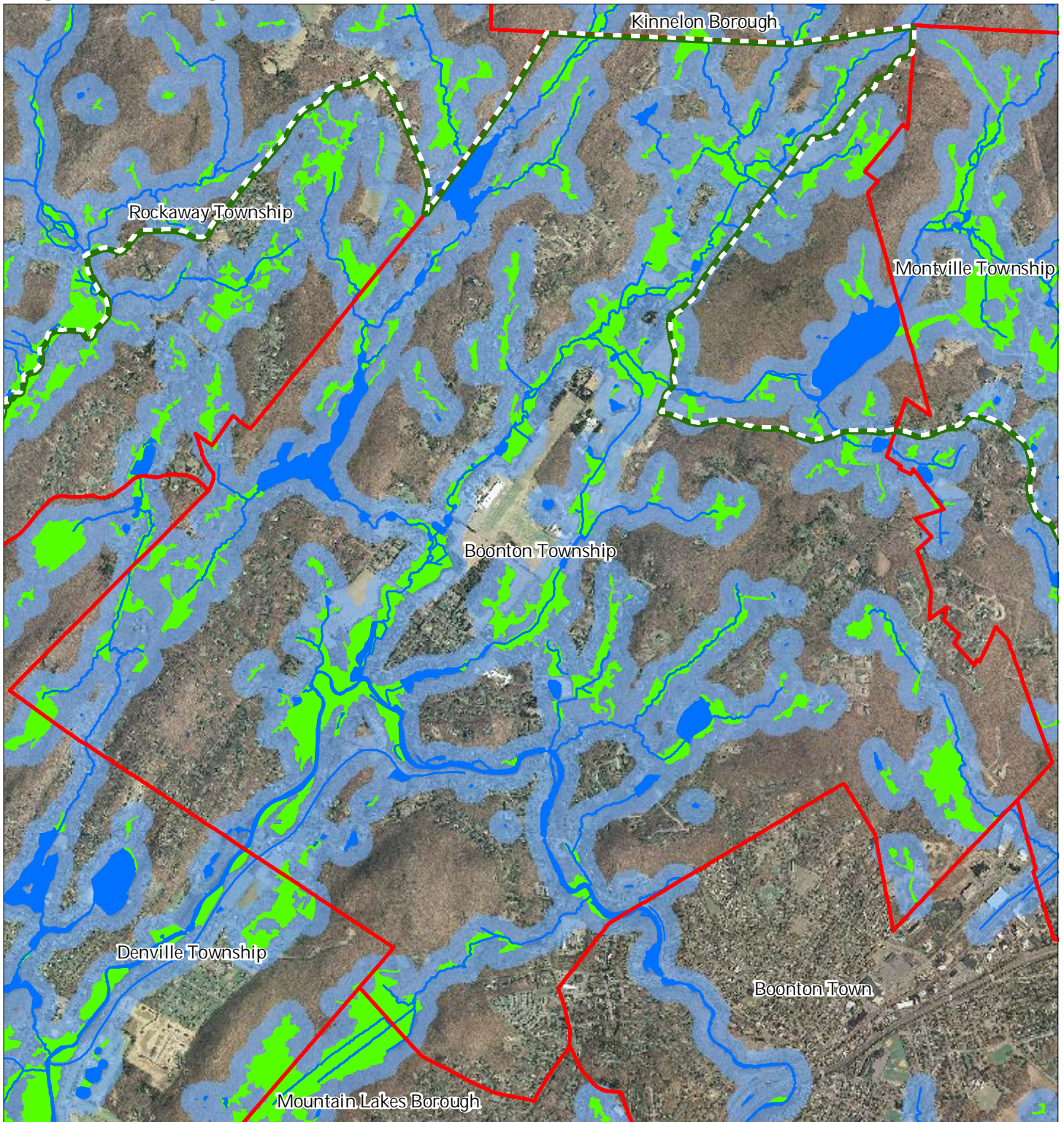
1 inch = 0.491 miles



February 2015

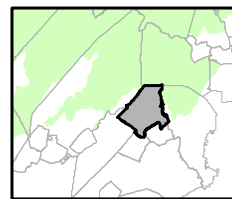
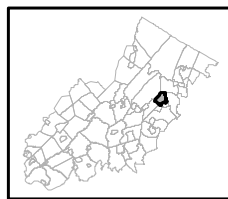


Figure 7: Highlands Open Waters



-  Highlands Open Water Buffers (300ft)
-  Streams
-  Wetlands
-  Lakes & Ponds
-  Preservation Area
-  Municipal Boundaries

## Boonton Township



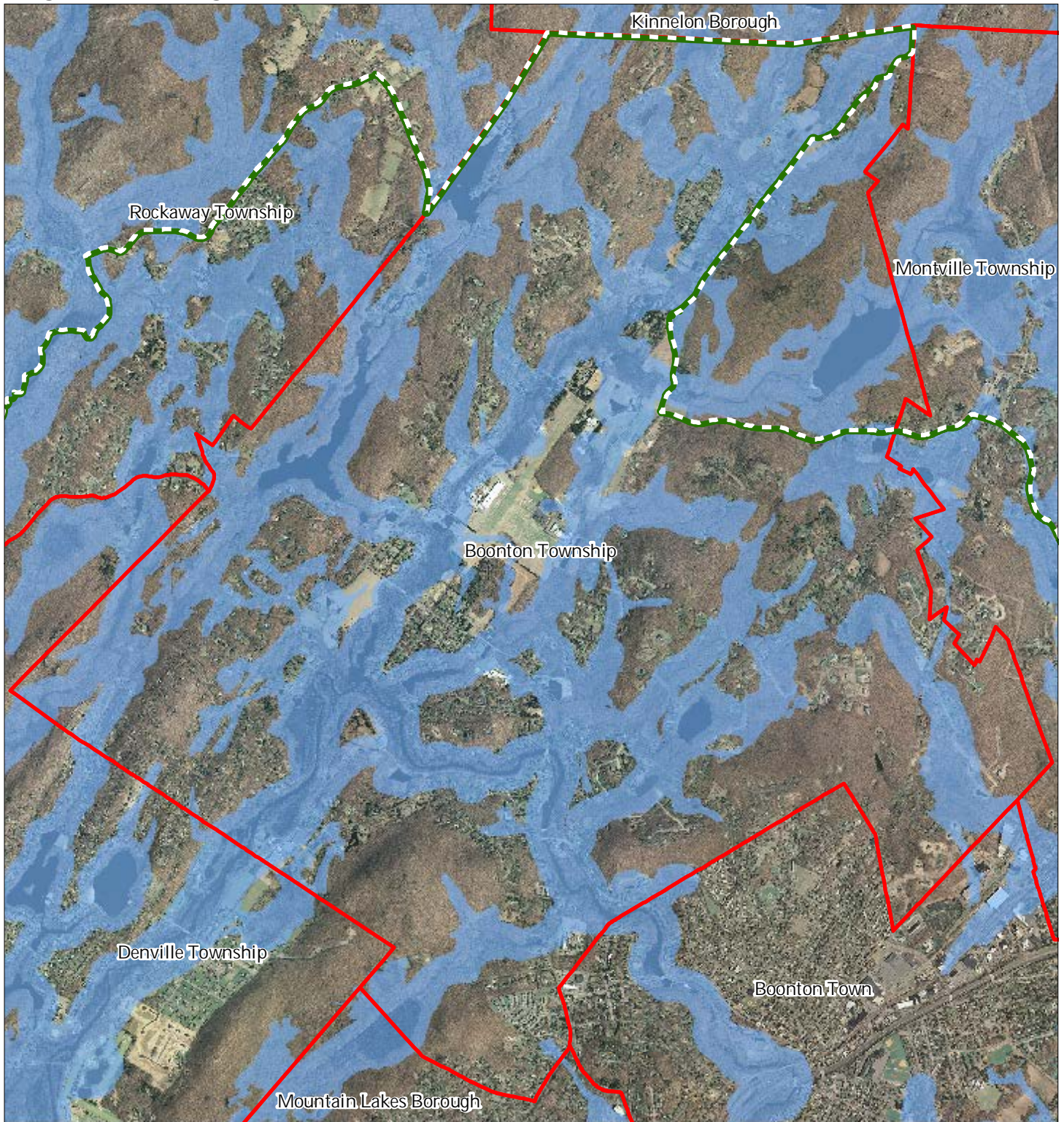
1 inch = 0.491 miles

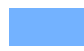




February 2015

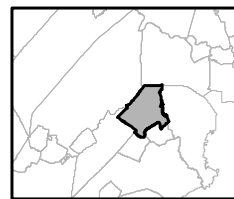
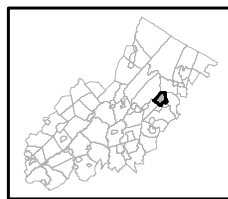


Figure 8: Highlands Riparian Areas



-  Riparian Area
-  Preservation Area
-  Municipal Boundaries

### Boonton Township



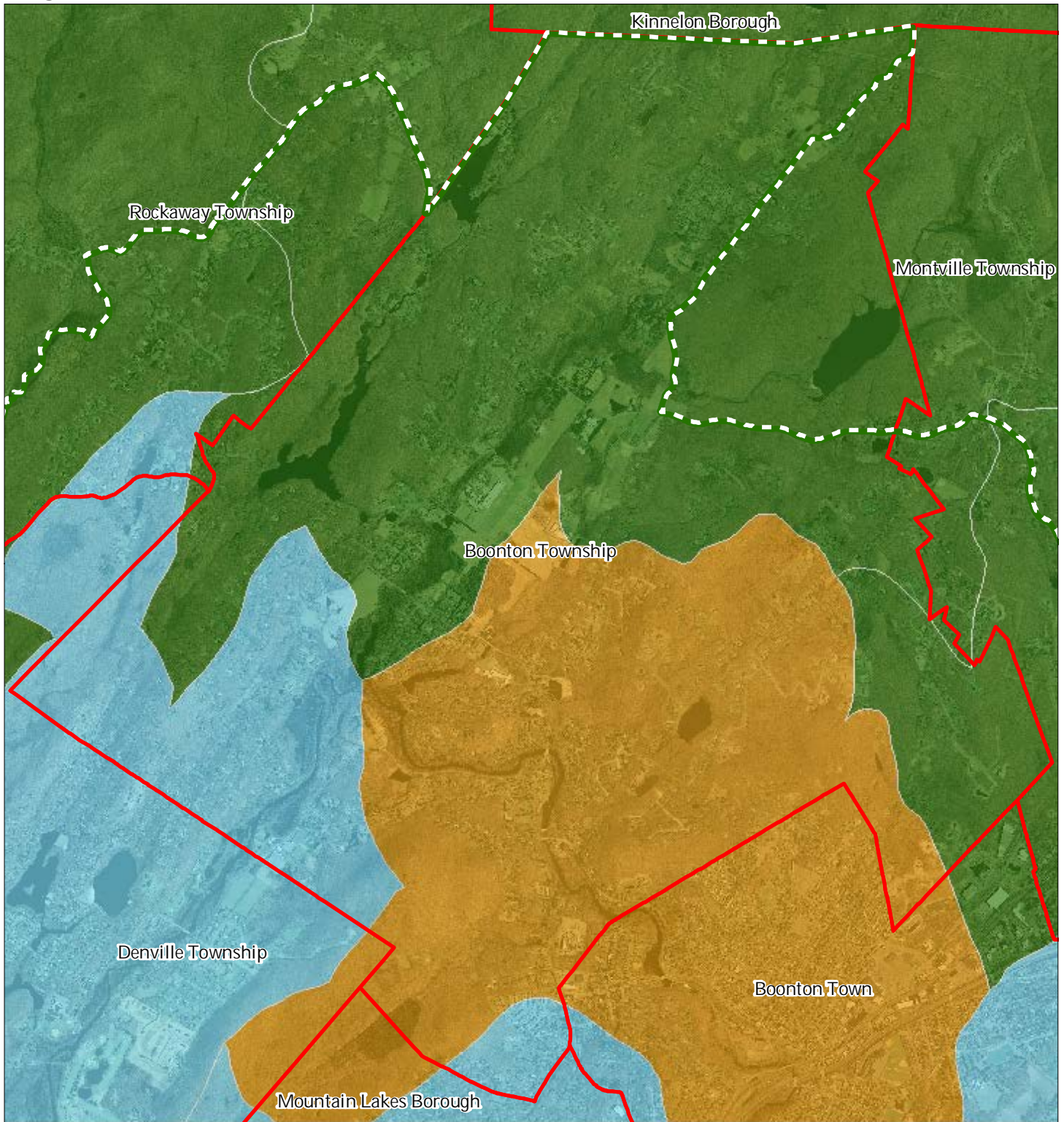
1 inch = 0.491 miles



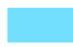




February 2015



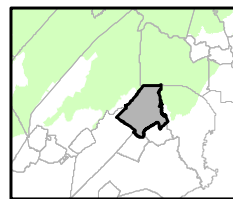
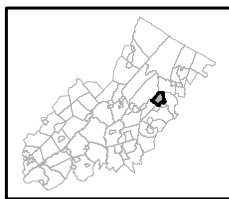
Figure 9: Watershed Values



Watershed Values by HUC14 Subwatershed

-  Low
-  Moderate
-  High
-  Preservation Area
-  Municipal Boundaries

Boonton Township



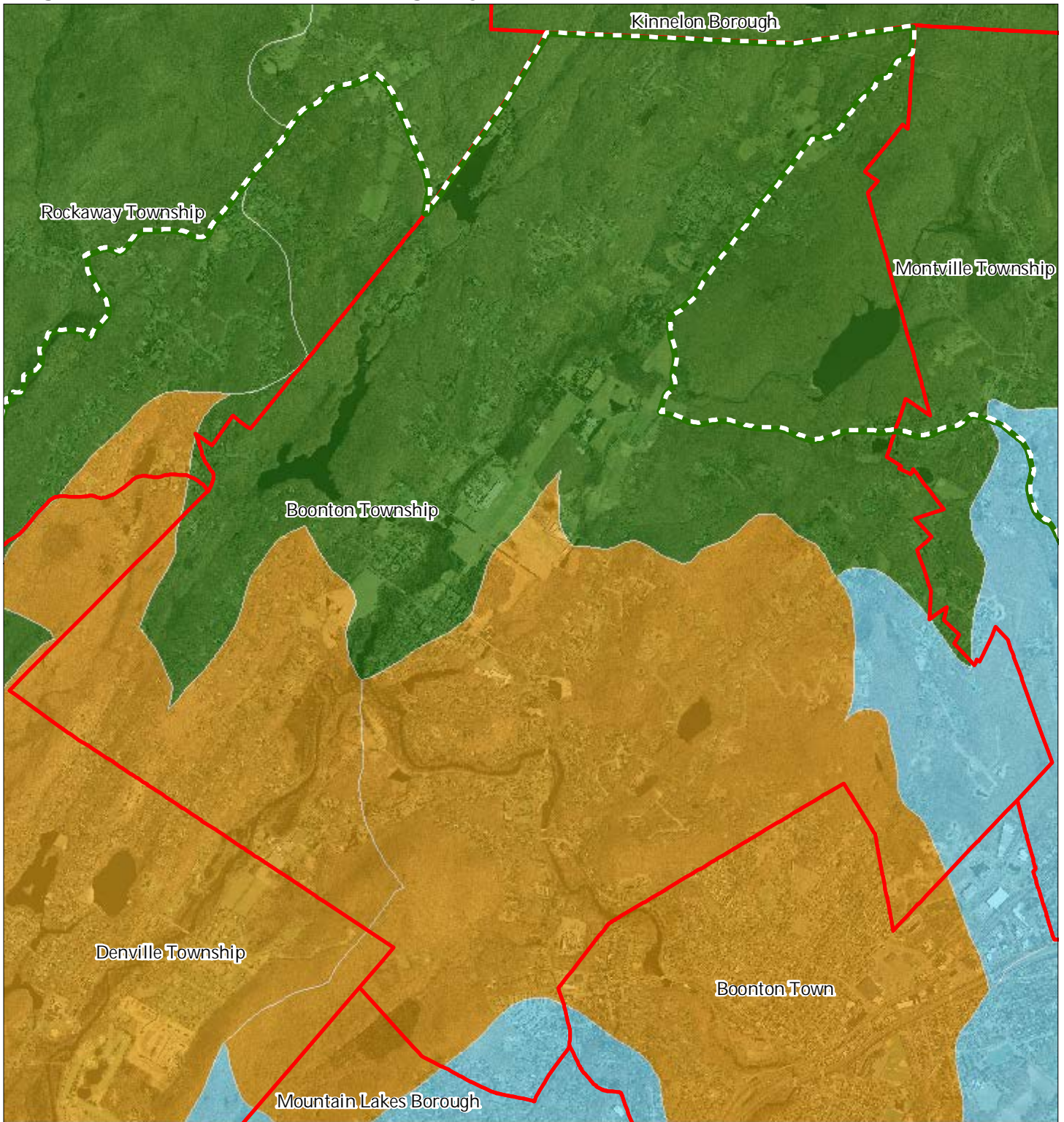
1 inch = 0.491 miles



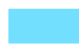




February 2015



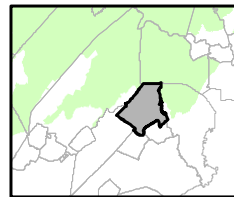
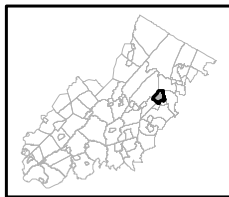
Figure 10: Riparian Integrity



Riparian Integrity by HUC14 Subwatershed

-  Low
-  Moderate
-  High
-  Preservation Area
-  Municipal Boundaries

Boonton Township



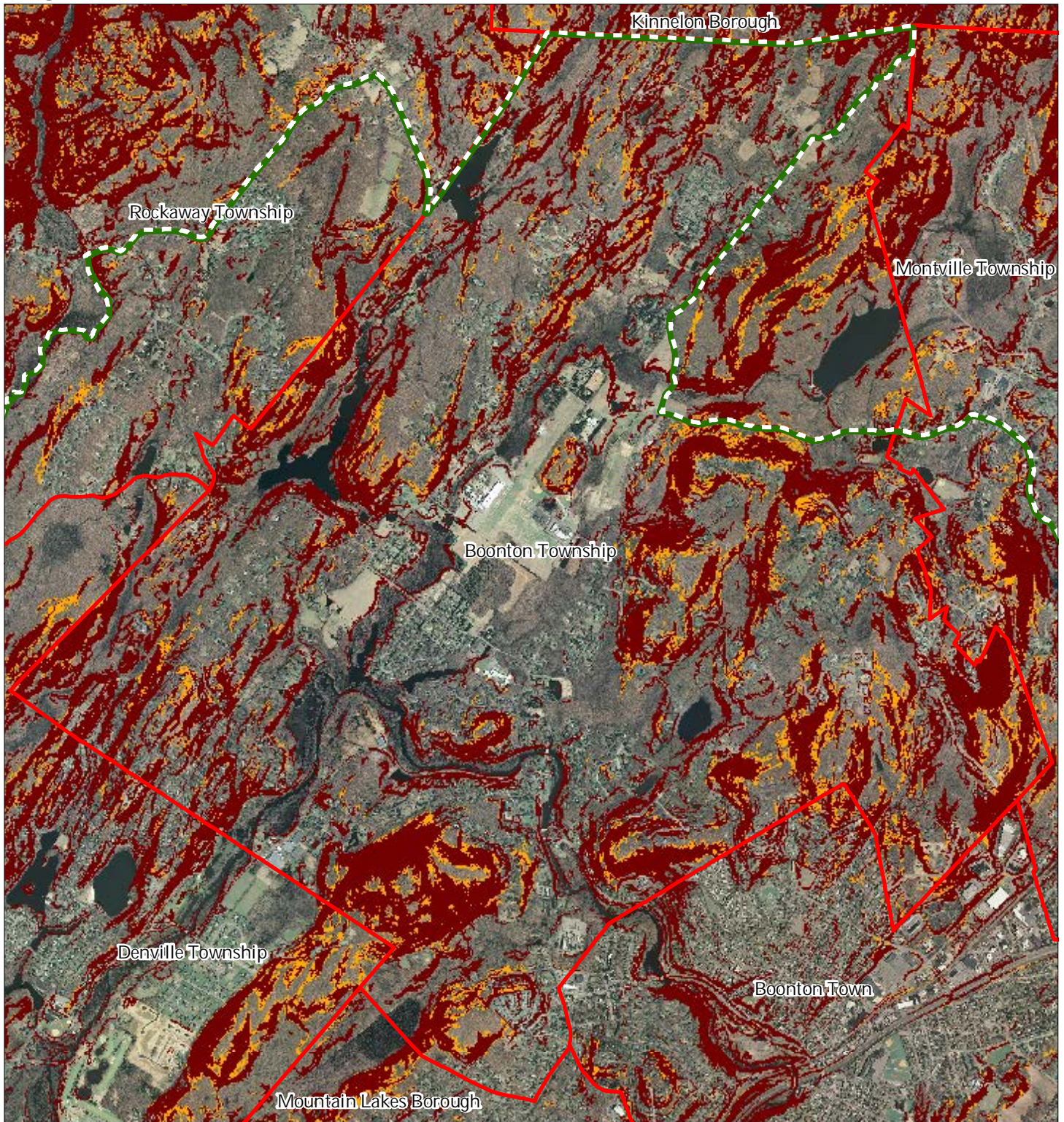
1 inch = 0.491 miles






February 2015



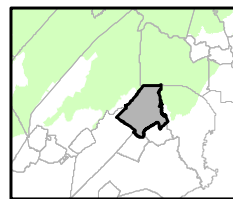
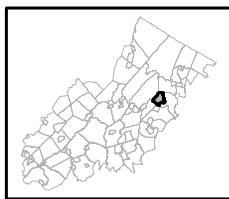
Figure 11: Steep Slope Protection Areas



Steep Slopes

-  Moderate
-  Severe
-  Preservation Area
-  Municipal Boundaries

Boonton Township



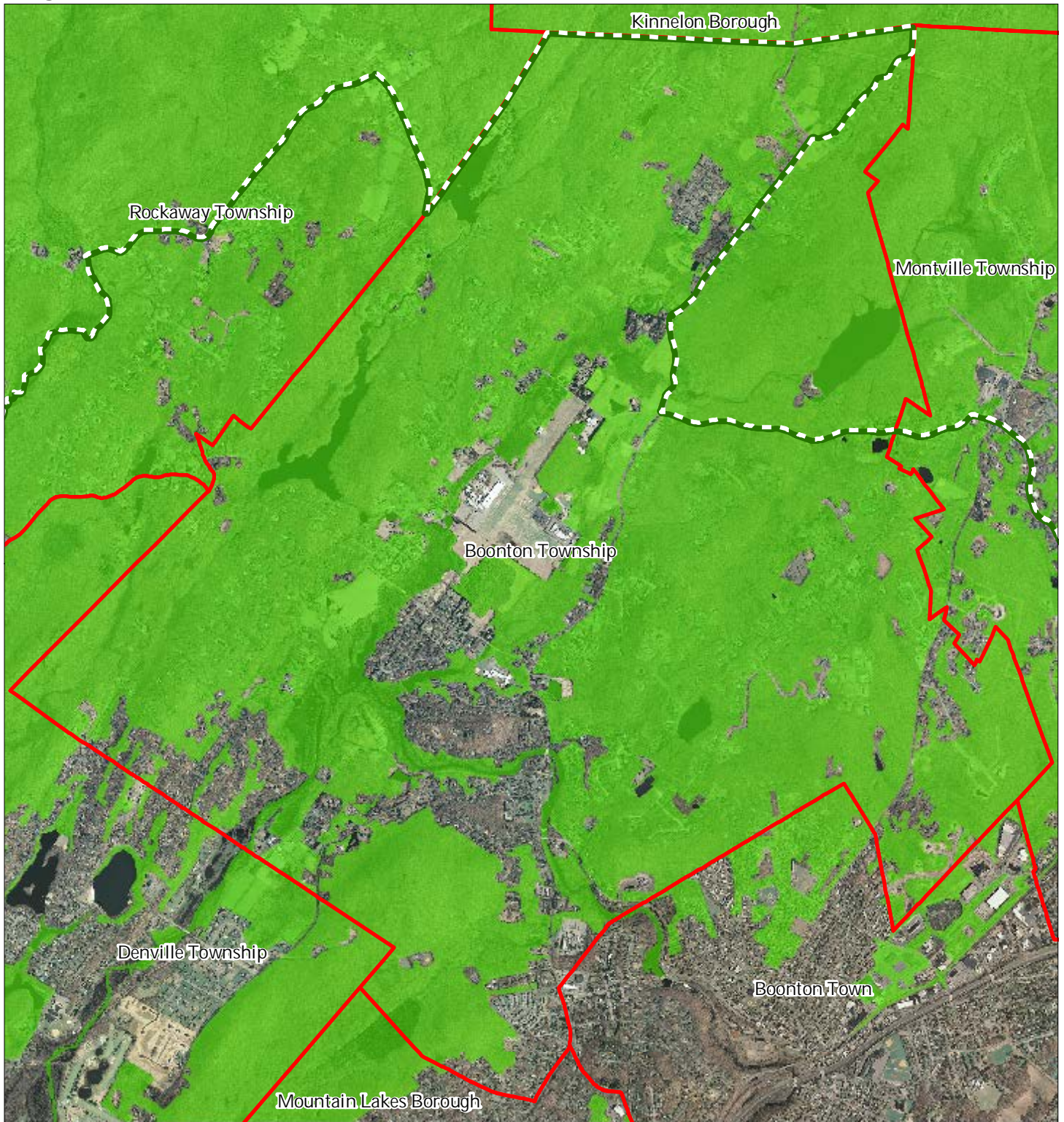
1 inch = 0.491 miles






February 2015

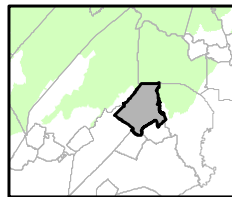
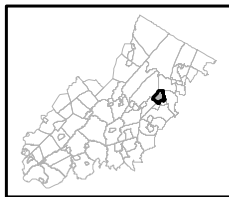


Figure 12: Critical Wildlife Habitat



-  Critical Wildlife Habitat
-  Preservation Area
-  Municipal Boundaries

### Boonton Township



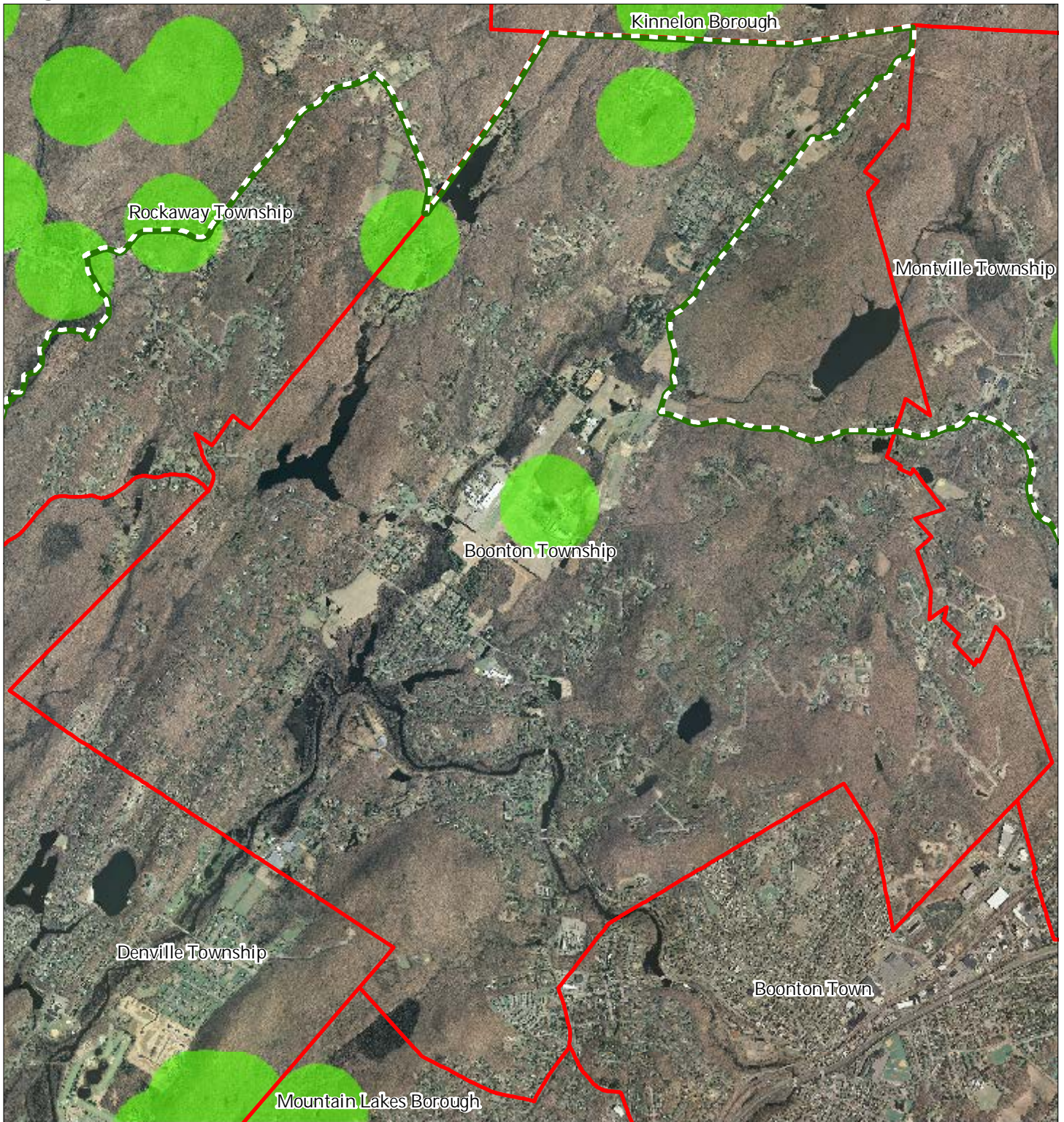
1 inch = 0.491 miles






February 2015

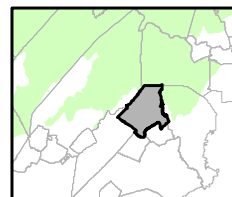
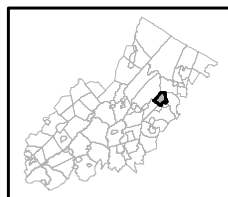


Figure 14: Vernal Pools



-  Vernal Pools + 1000ft Buffer
-  Preservation Area
-  Municipal Boundaries

## Boonton Township



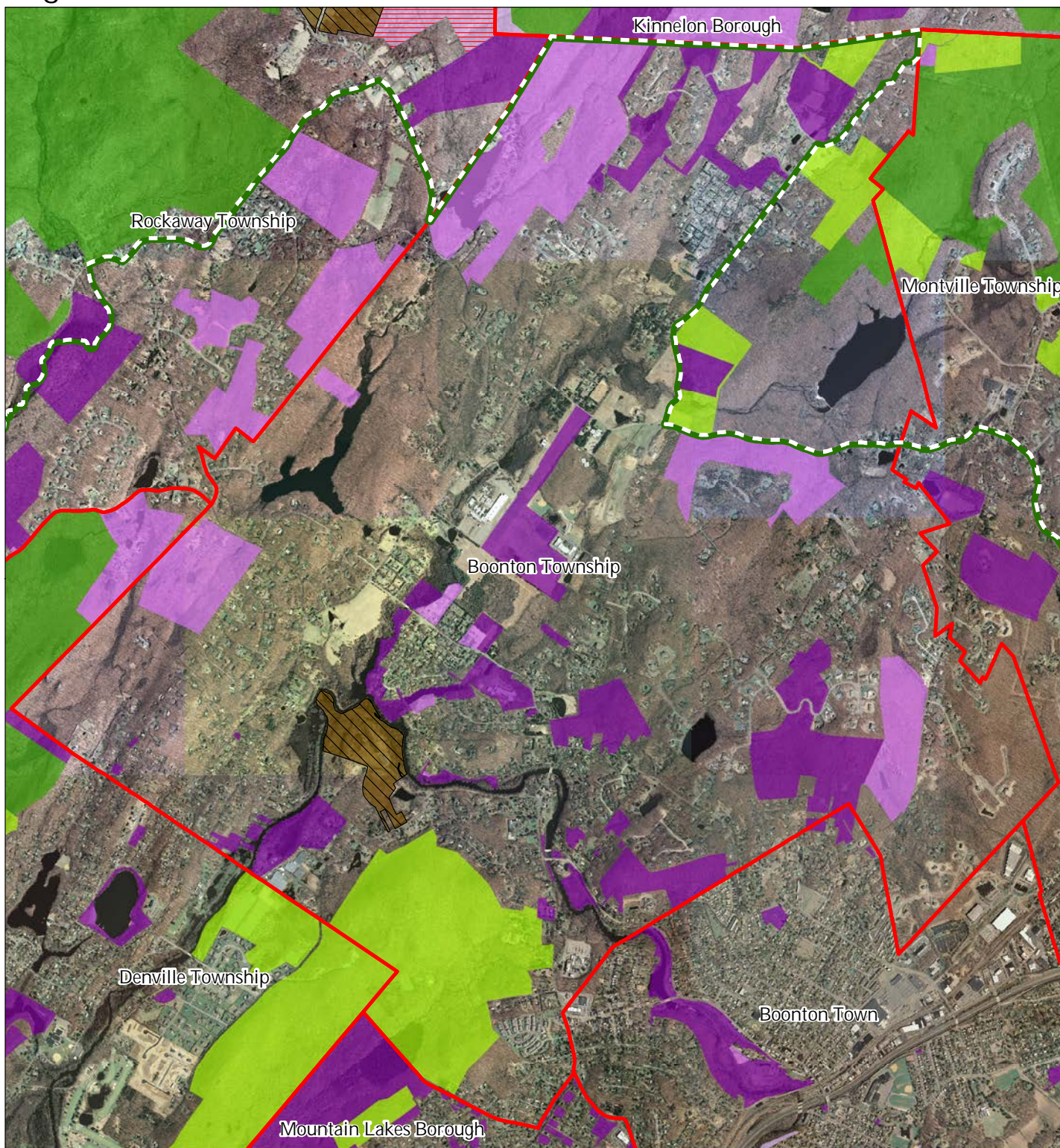
1 inch = 0.491 miles



February 2015

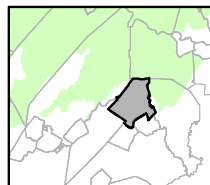
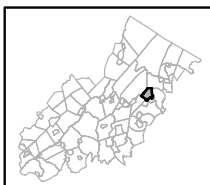


Figure 15: Preserved Lands



- |   |                               |
|---|-------------------------------|
| <b>Preserved Lands</b>                  | <b>Conservation Easements</b> |
| Federal Open Space                      | Green Acres                   |
| State Open Space                        | <b>SADC Easements</b>         |
| County Open Space                       | SADC Final                    |
| Municipal Open Space                    | SADC Preserved                |
| Non-Profit/Private Open Space           | Municipal Boundaries          |
| Water Supply Watershed                  | Preservation Area             |
| Preserved Farmland                      |                               |
| Highlands Transfer of Development Lands |                               |

## Boonton Township



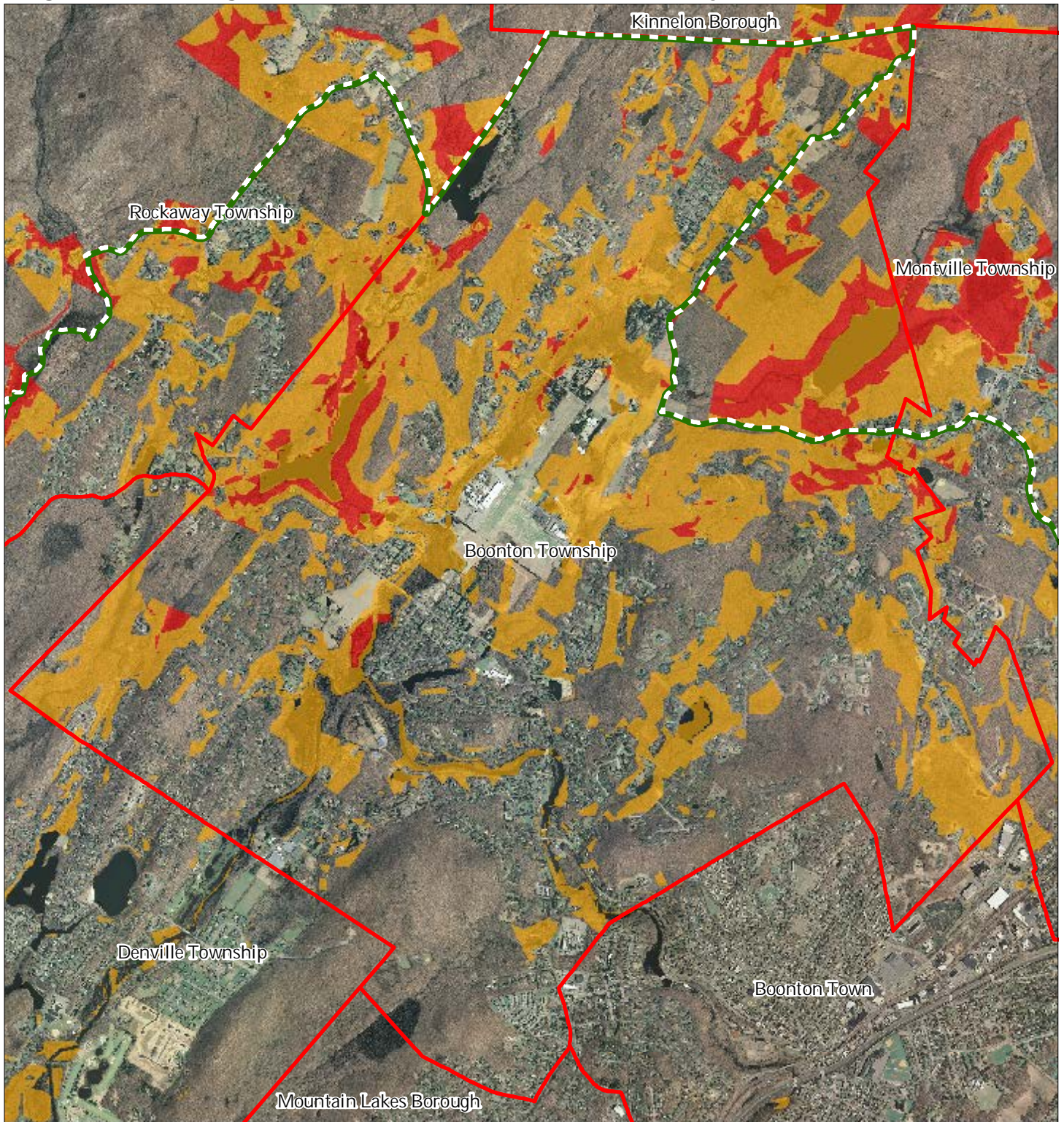
1 inch = 0.491 miles







February 2015



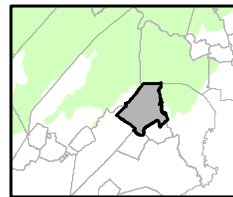
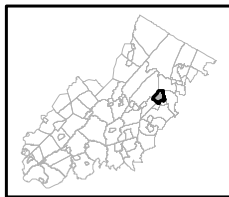
Figure 16: Highlands Conservation Priority Areas



Conservation Priority Area

-  Moderate
-  High
-  Preservation Area
-  Municipal Boundaries

Boonton Township

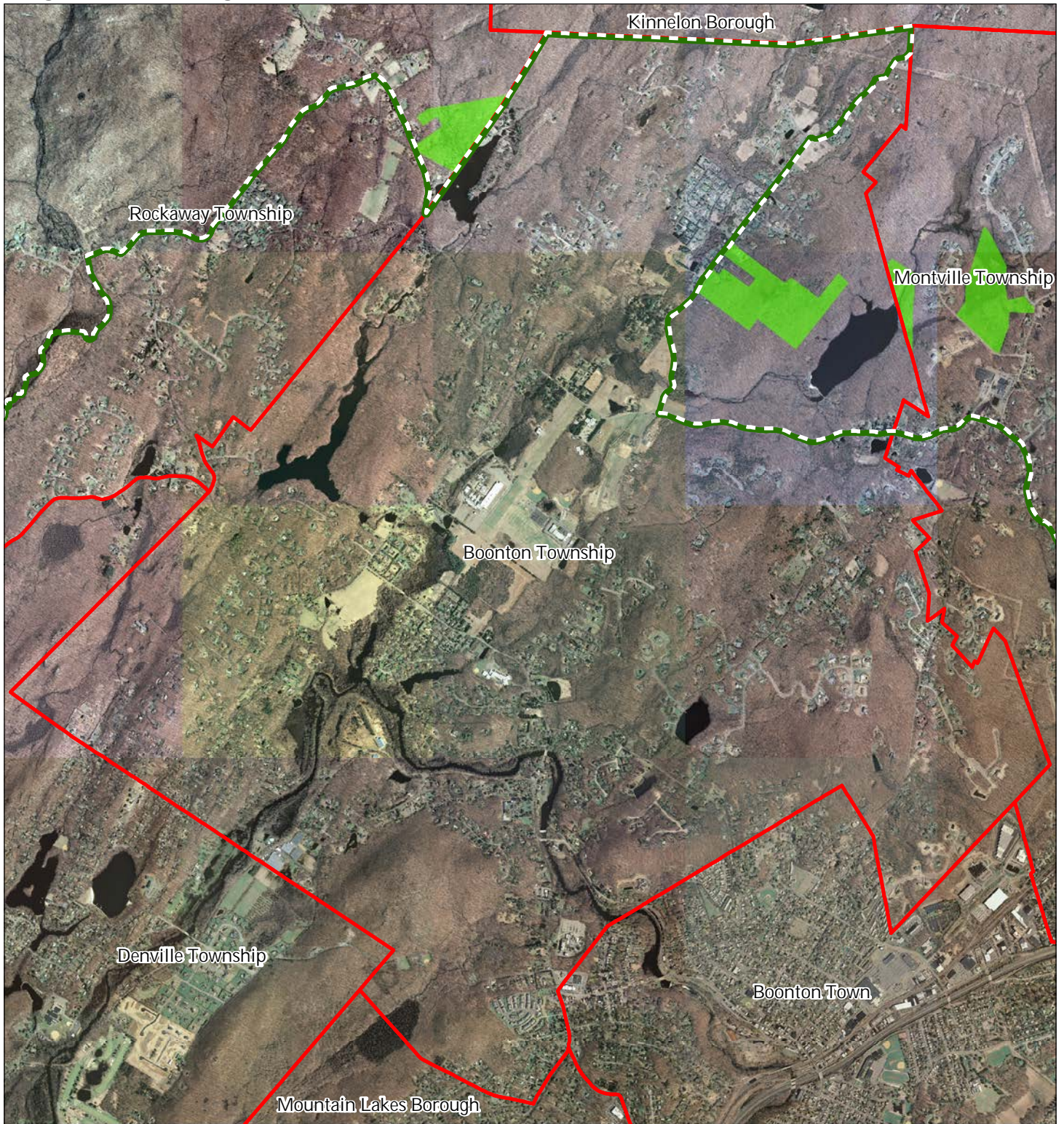


1 inch = 0.491 miles



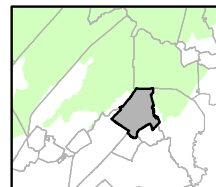
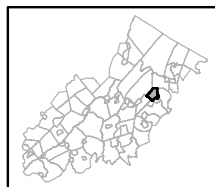


Figure 17: Highlands Special Environmental Zone



- Special Environmental Zones
- Preservation Area Municipal
- Boundaries

Boonton Township



1 inch = 0.491 miles



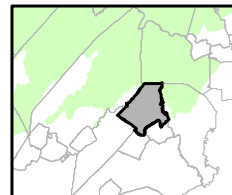
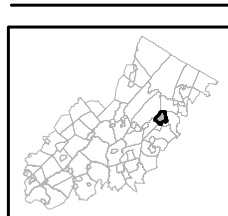


Figure 19: Lake Management Area



- Lakes & Ponds
- Lake Management Area
- Preservation Area
- Municipal Boundaries

Boonton Township



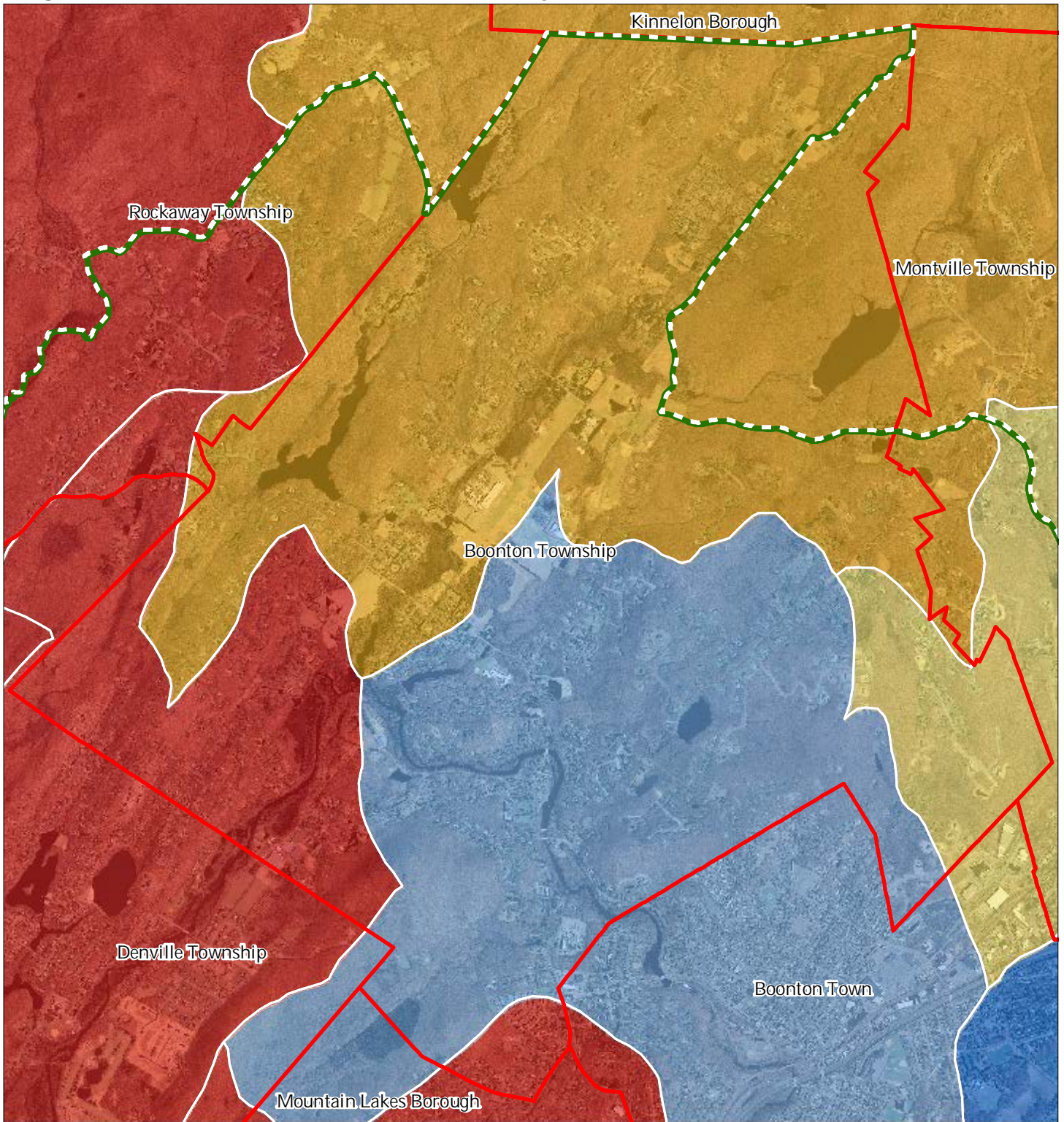
1 inch = 0.491 miles



February 2015



Figure 20: Net Water Availability



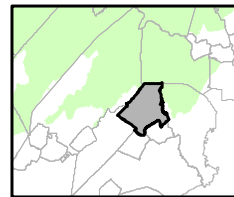
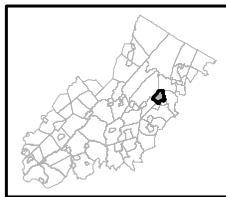
Net Water Availability By HUC14

Million Gallons Per Day (MGD)

- 0.10 - 0.39
- 0.05 - 0.09
- 0.00 - 0.04
- 0.09 - 0.00
- 0.99 - -0.10
- 7.10 - -1.00

- Preservation Area
- Municipal Boundaries

Boonton Township



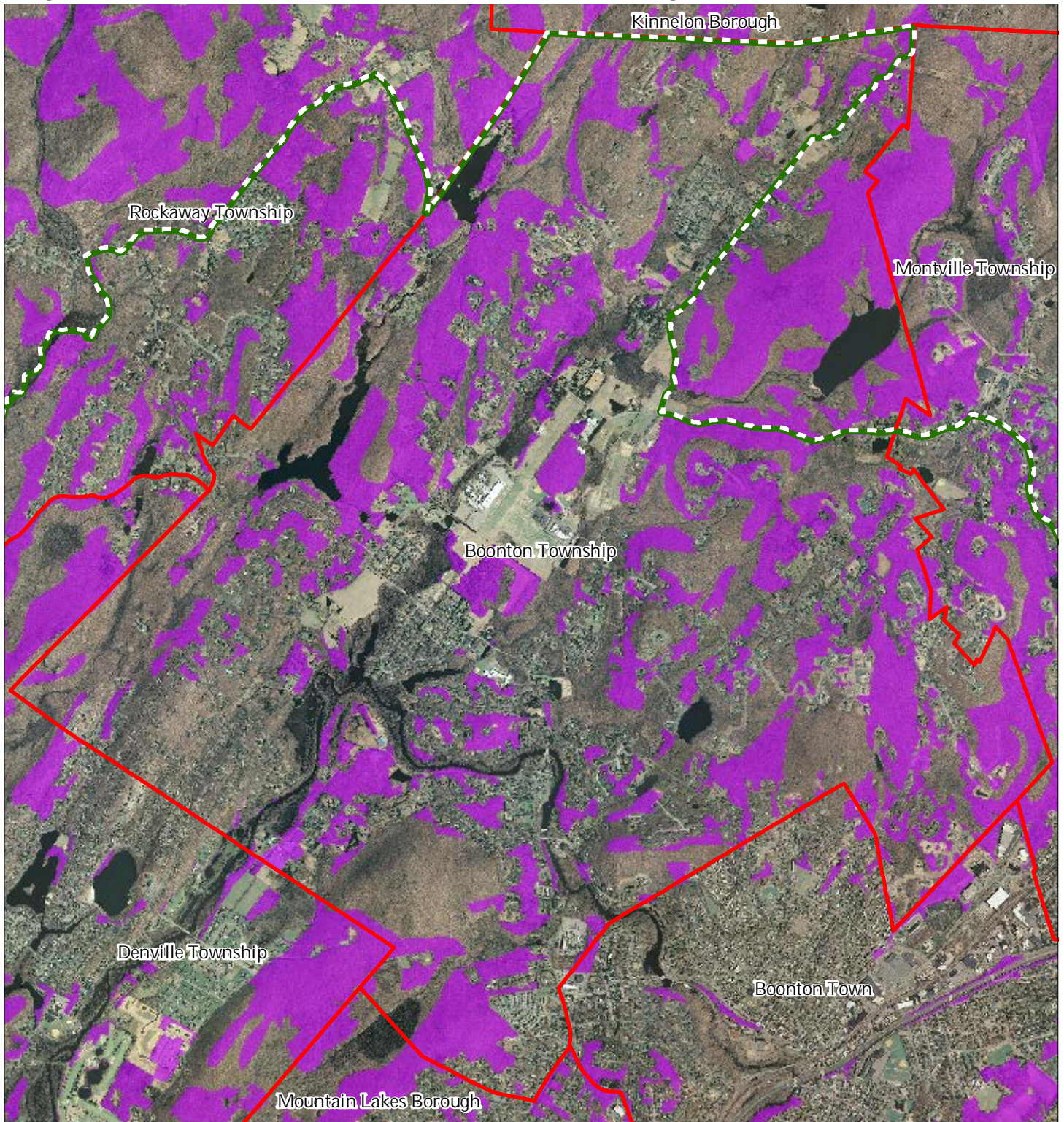
1 inch = 0.491 miles






February 2015

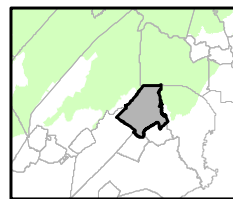
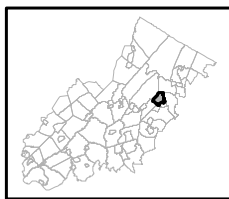


Figure 21: Prime Ground Water Recharge Areas



-  Prime Ground Water Recharge
-  Areas Preservation Area
-  Municipal Boundaries

### Boonton Township



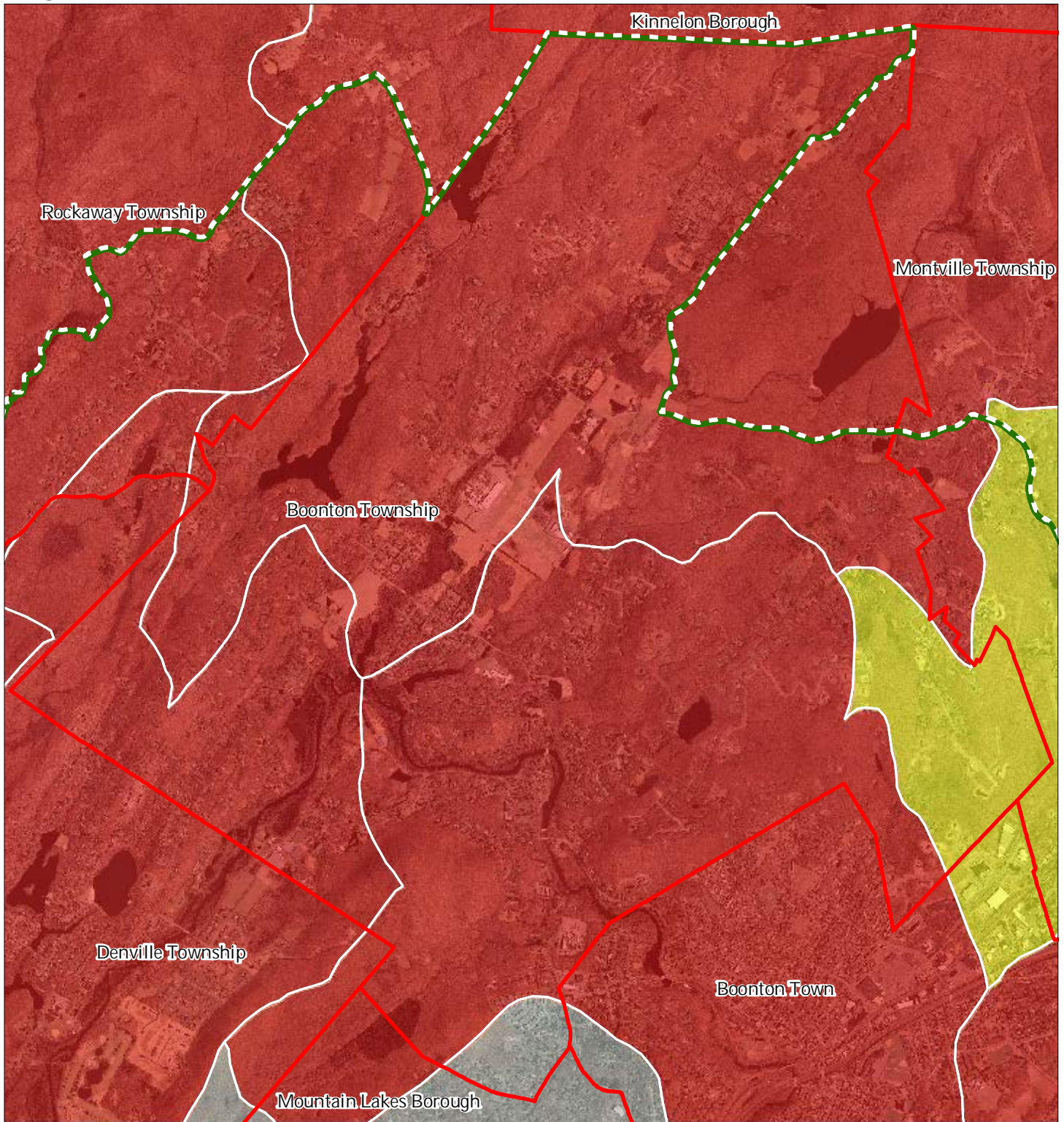
1 inch = 0.491 miles



February 2015



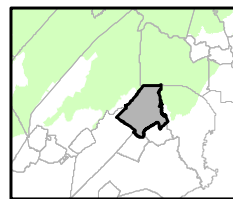
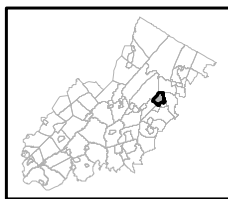
Figure 22: HUC 14s on NJDEP Impaired Waters List



Impaired Waters Overall Assessment by HUC14 Subwatershed

- Non Impacted*
- Insufficient Data Available*
- Moderate*
- Water Quality Impaired*
- Preservation Area
- Municipal Boundaries

## Boonton Township



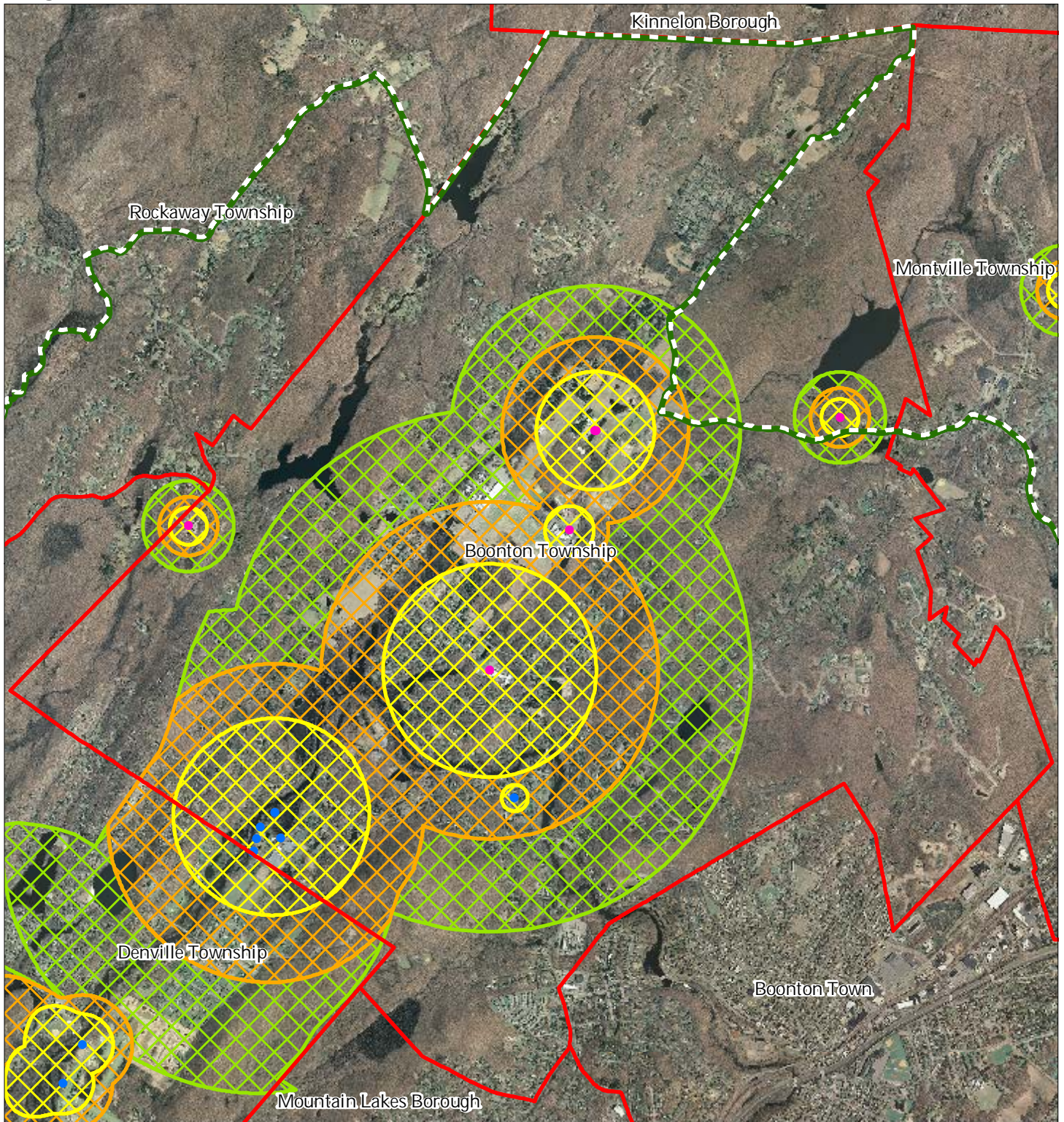
1 inch = 0.491 miles



February 2015



Figure 23: Wellhead Protection Areas



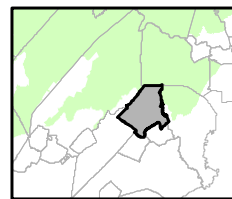
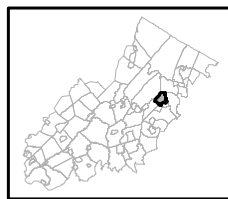
- Public Community Wells
- Public Non-Community Wells

Wellhead Protection Areas

- 2-Year Tier
- 5-Year Tier
- 12-Year Tier

- Preservation Area
- Municipal Boundaries

Boonton Township

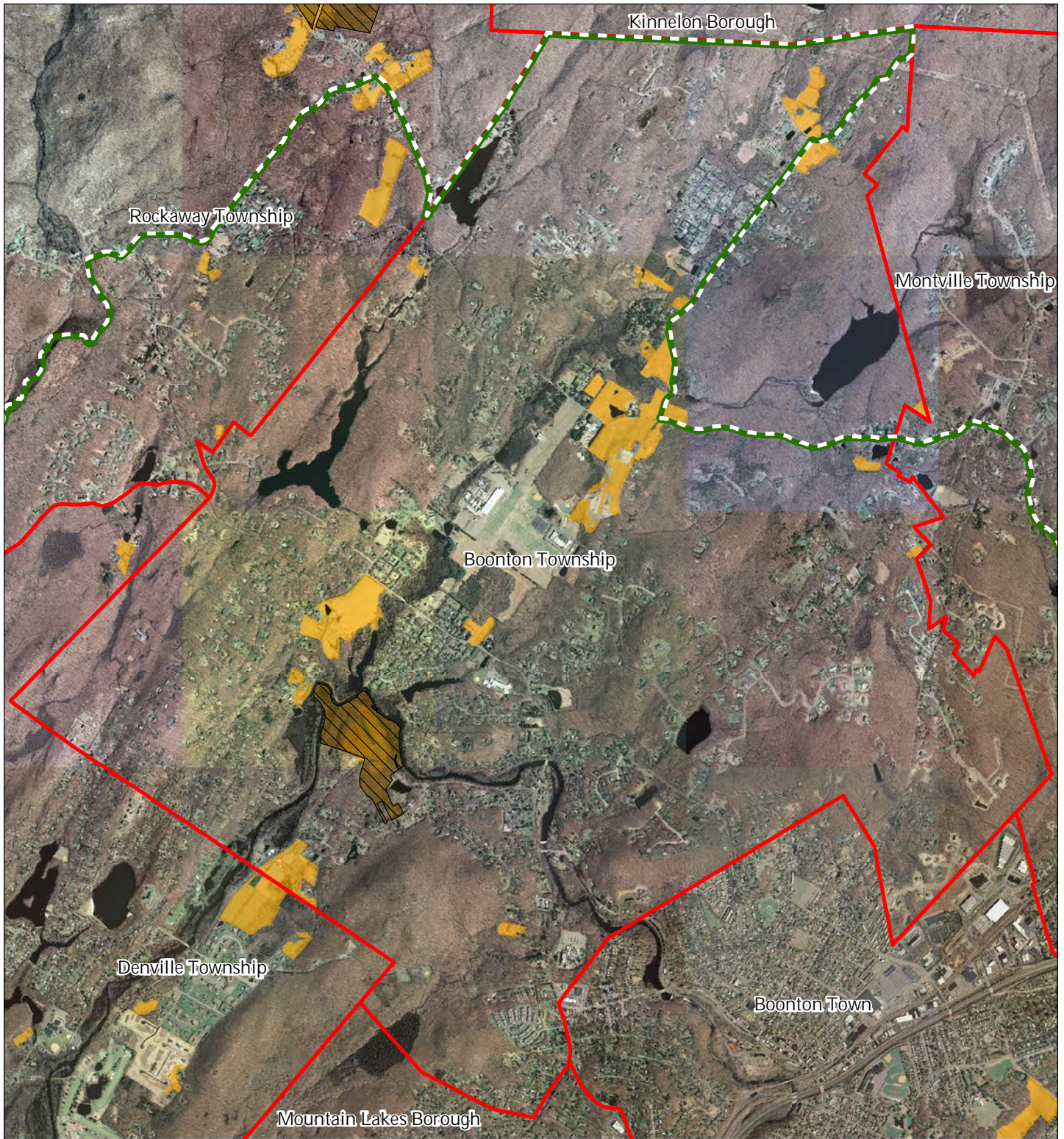


1 inch = 0.491 miles





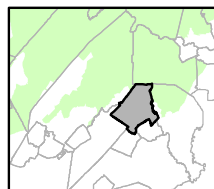
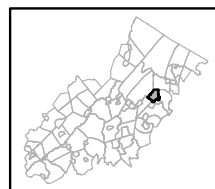
Figure 26: Preserved Farms, SADC Easements, All Agricultural Uses



SADC Easements

-  *SADC Final*
-  *SADC Preserved*
-  Preserved Farmland
-  Agriculture Uses
-  Preservation Area
-  Municipal Boundaries

Boonton Township



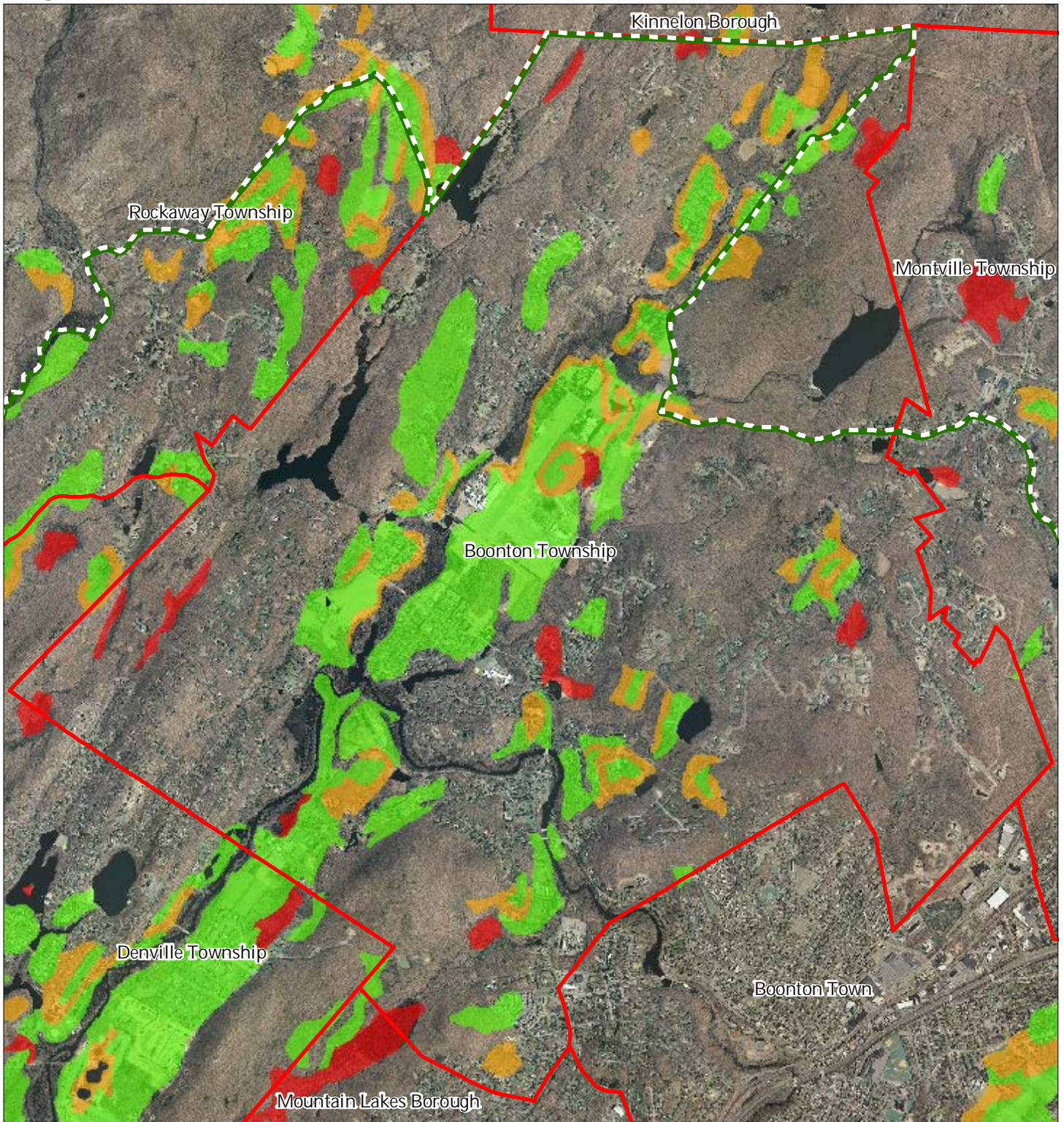
1 inch = 0.491 miles



February 2015



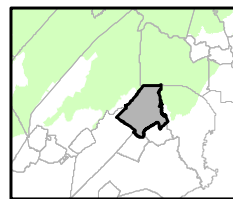
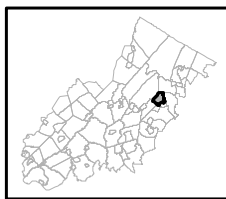
Figure 27: Important Farmland Soils



Important Farmland Soils

-  Prime Farmland
-  Farmland of Local Importance
-  Farmland of Statewide Importance
-  Farmland of Unique Importance
-  Preservation Area
-  Municipal Boundaries

Boonton Township



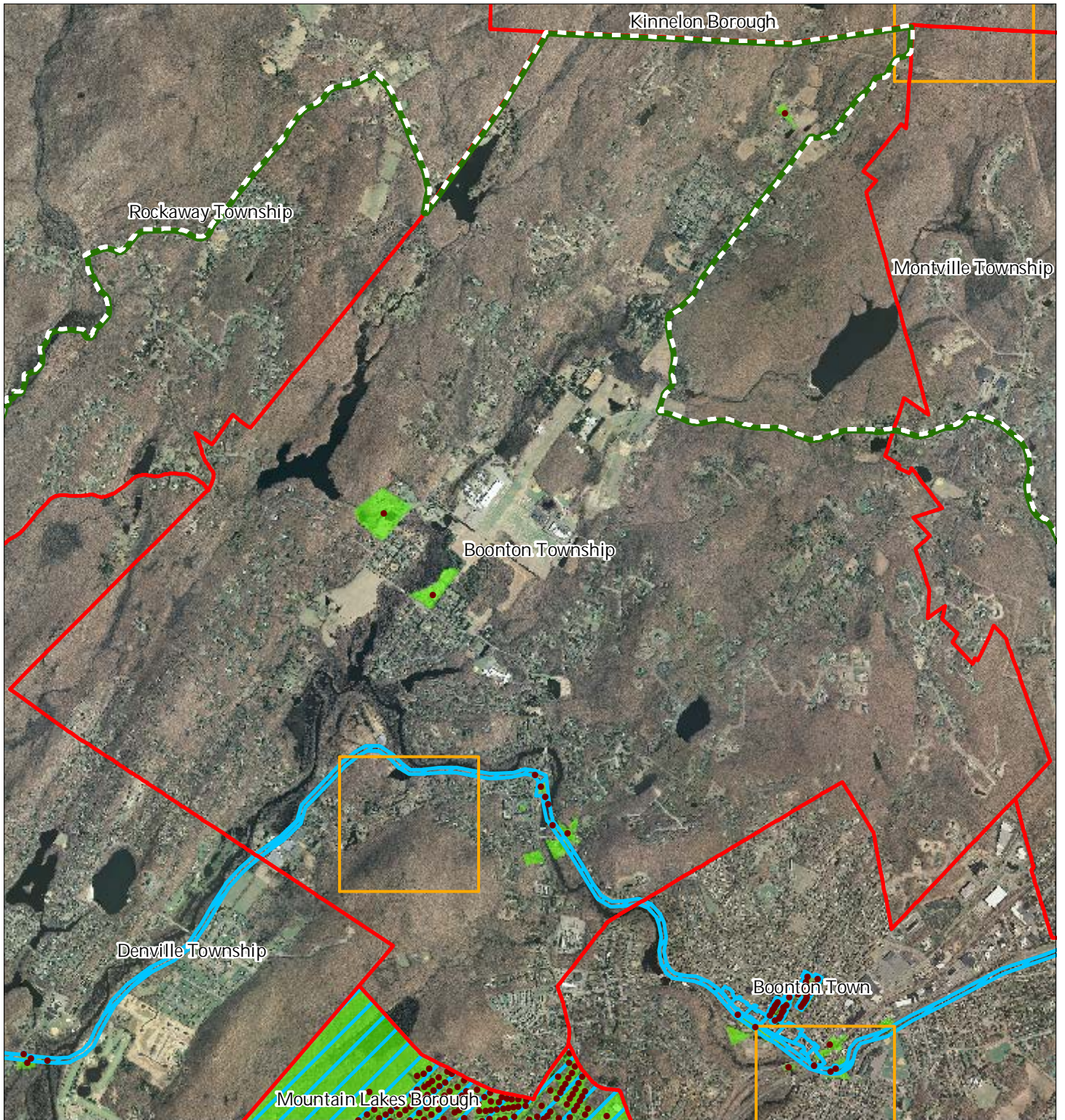
1 inch = 0.491 miles



February 2015

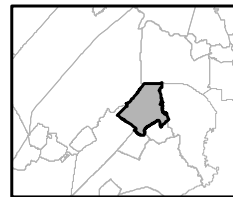
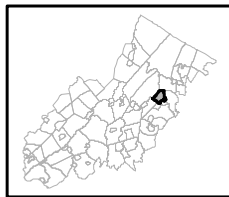


Figure 28: Historic, Cultural, and Archaeological Resources Inventory



-  Preservation Area
-  Municipal Boundaries
-  Archaeological Grids (1 sqmi)
-  NJ Historic Districts
-  Historic Property Points
-  Historic Property Polygons

## Boonton Township



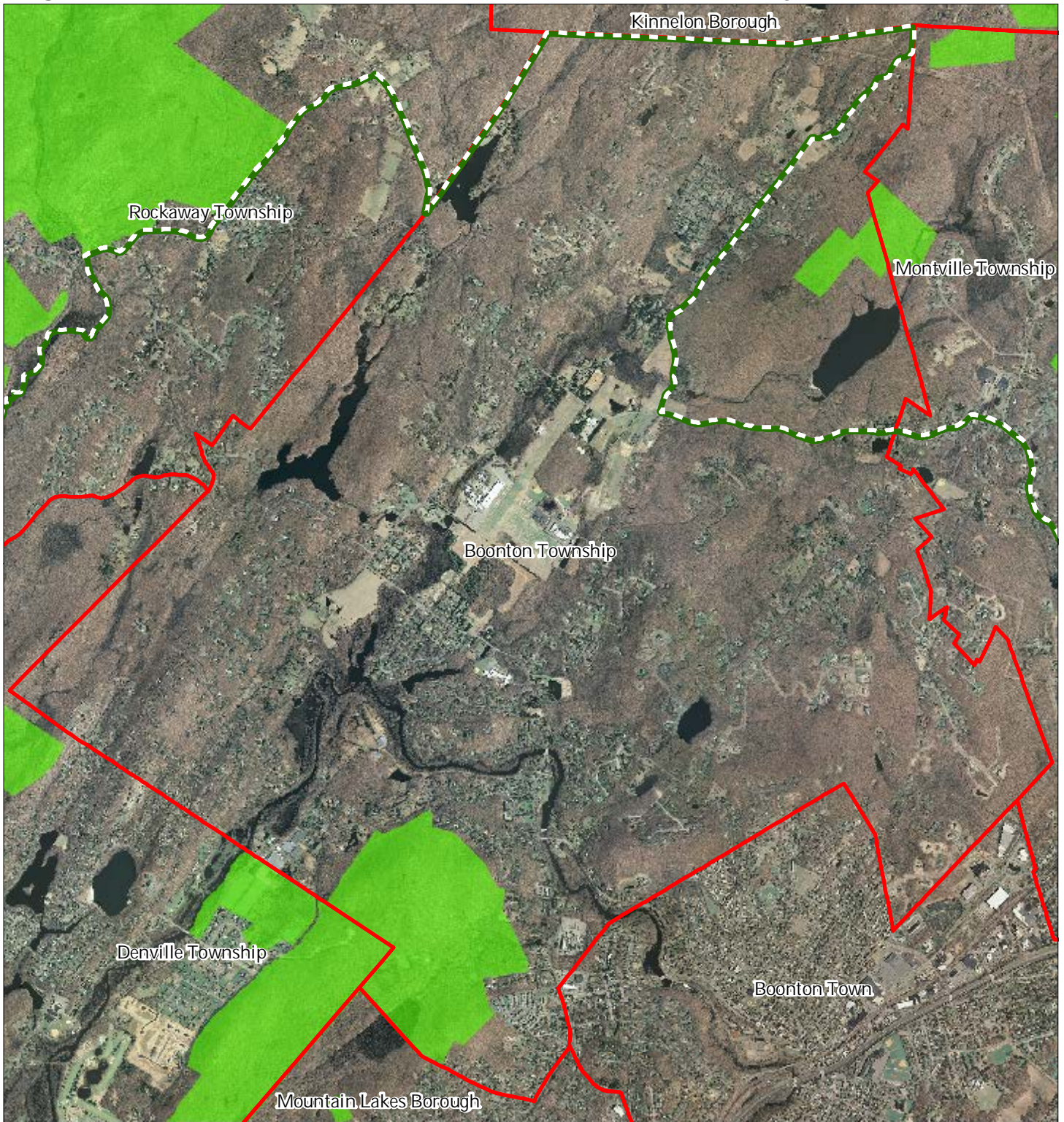
1 inch = 0.491 miles



February 2015

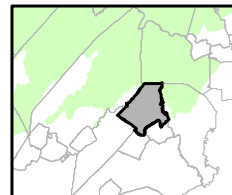
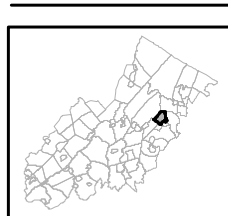


Figure 29: Baseline Scenic Resources Inventory



- Scenic Resources
- Municipal Boundaries
- Preservation Area

### Boonton Township



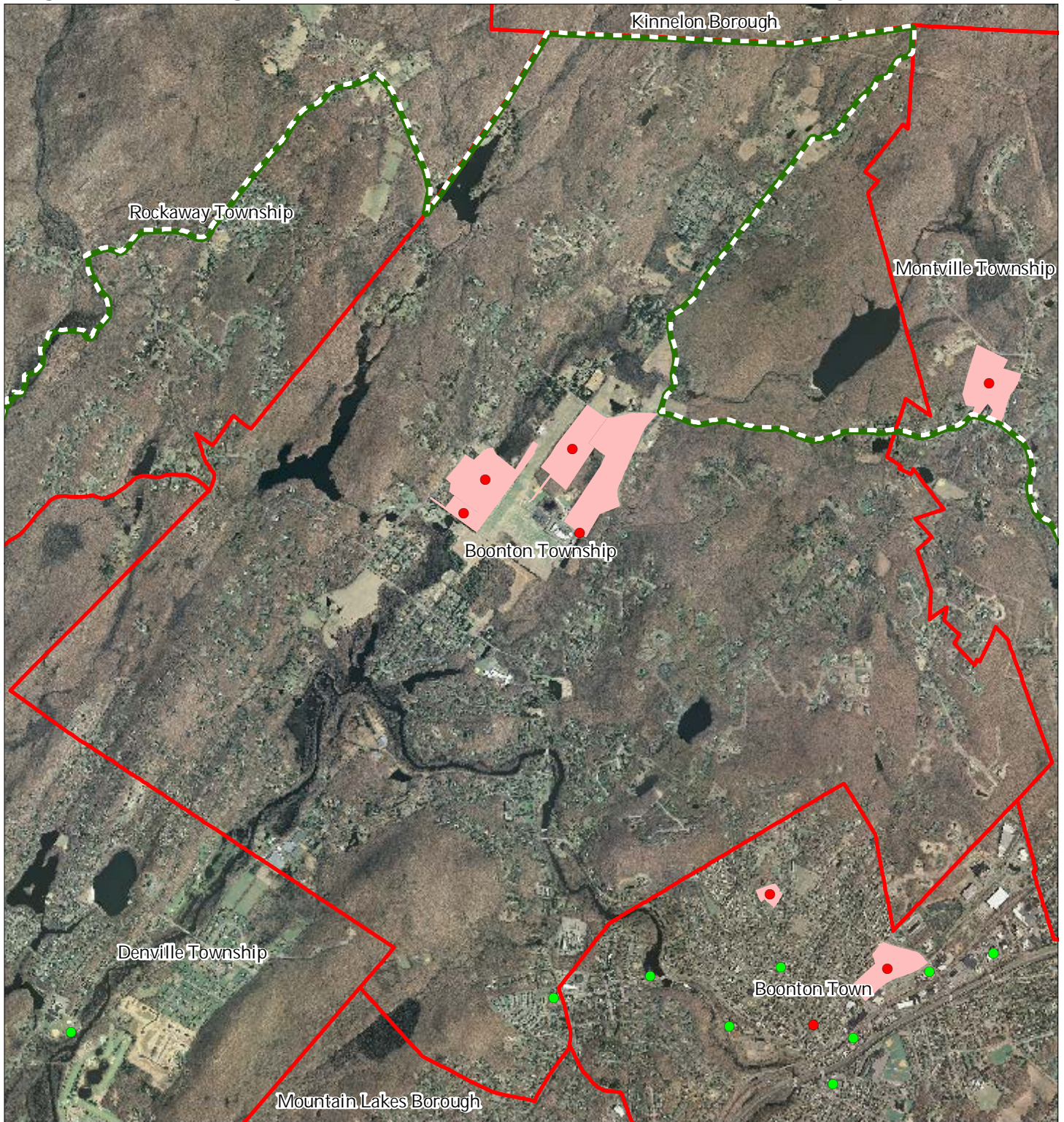
1 inch = 0.491 miles



February 2015



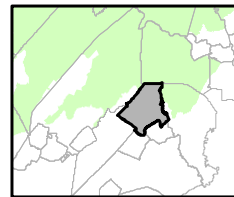
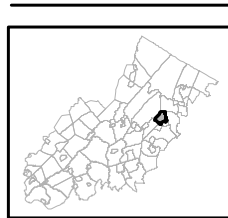
Figure 30: Highlands Contaminated Site Inventory



Highlands Contaminated Site Inventory

- Tier 1 Sites
- Tier 1 Sites (Polygons)
- Tier 2 Sites
- Preservation Area
- Municipal Boundaries

Boonton Township



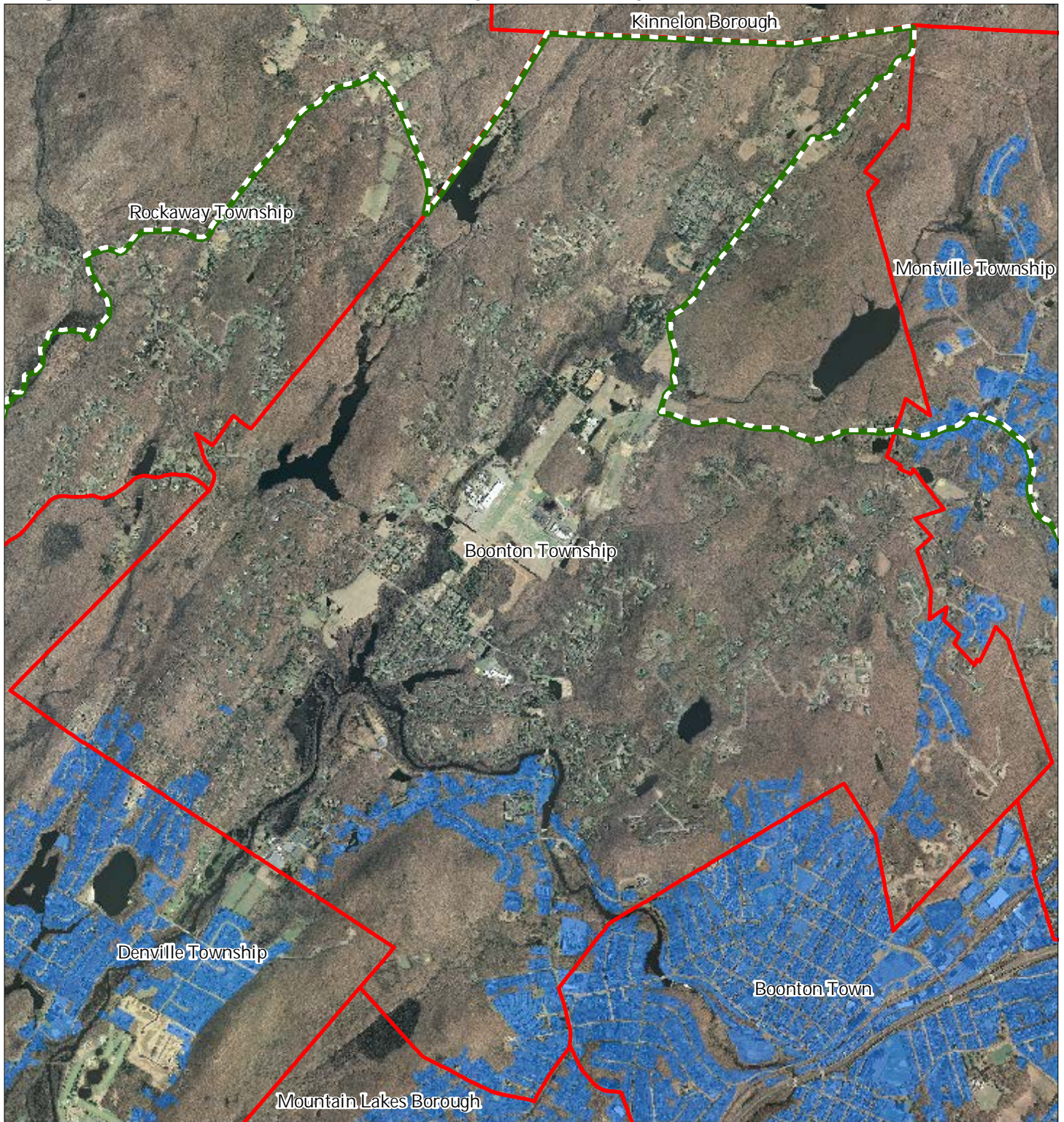
1 inch = 0.491 miles






February 2015

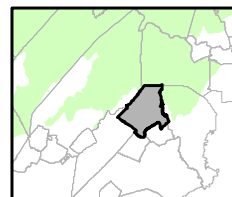
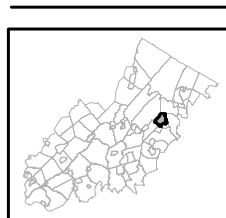


Figure 31: Public Community Water Systems



-  Public Community Water Systems
-  Preservation Area
-  Municipal Boundaries

### Boonton Township



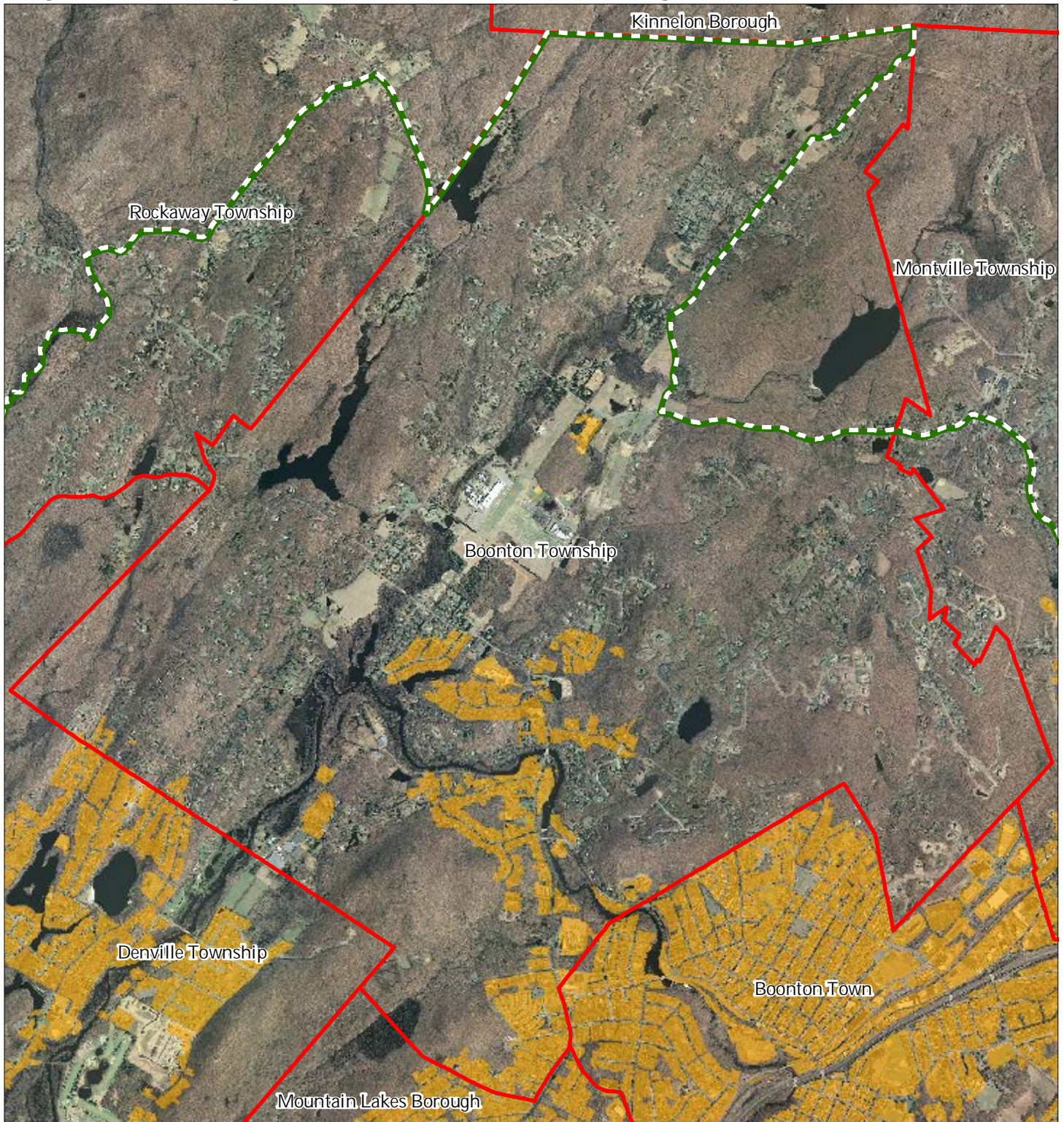
1 inch = 0.491 miles






February 2015



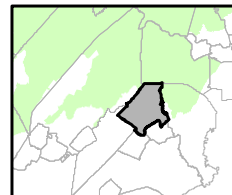
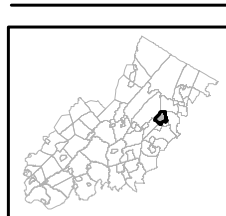
Figure 32: Highlands Domestic Sewerage Facilities



Highlands Domestic Sewerage Facilities

-  Existing Area Served
-  Preservation Area
-  Municipal Boundaries

Boonton Township



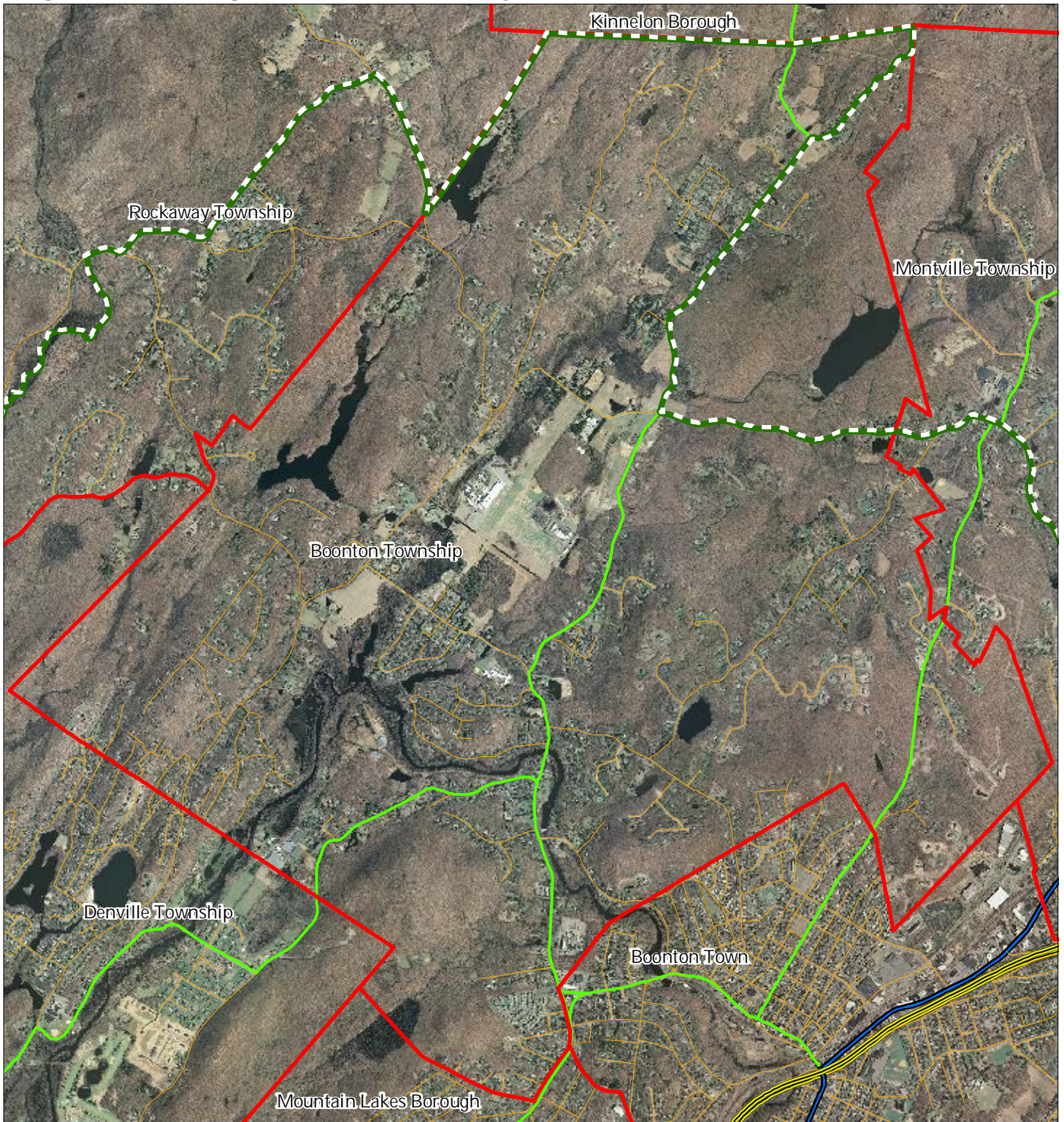
1 inch = 0.491 miles



February 2015



Figure 33: Highlands Roadway Network

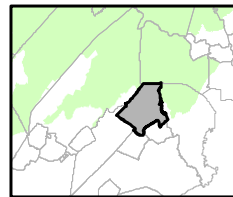
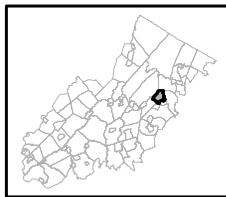


Roadway Network

- Interstate Highways
- U.S. Routes
- State Routes
- County Routes
- Local Routes

- Preservation Area
- Municipal Boundaries

Boonton Township



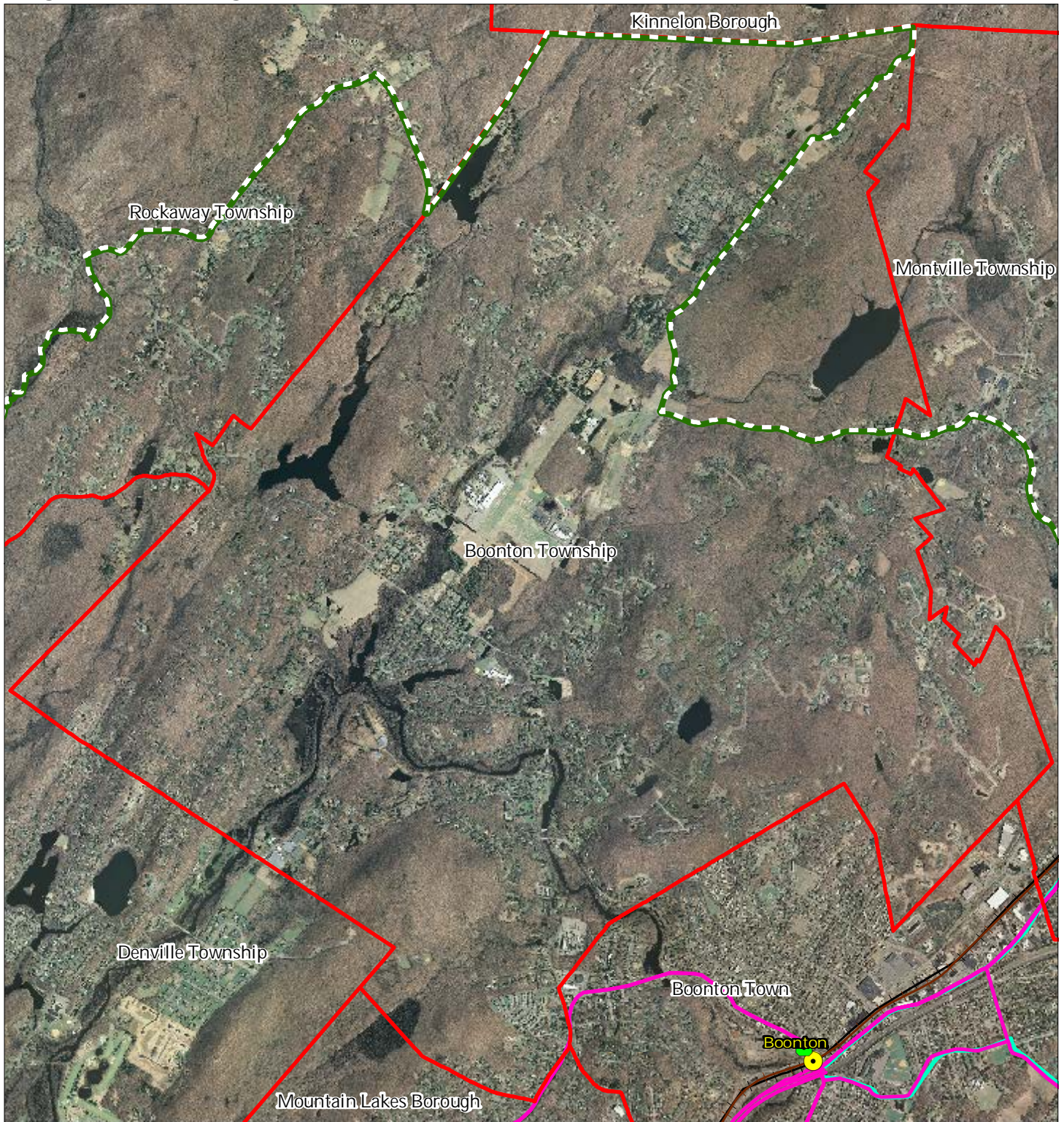
1 inch = 0.491 miles



February 2015

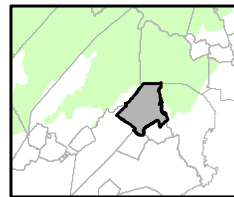
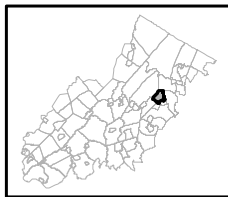


Figure 34: Highlands Transit Network



- |   |                      |
|---|----------------------|
| <b>Rail Network</b>                       | Rail Stations        |
| <i>Boonton Line</i>                       | Park and Ride Sites  |
| <i>Main Line &amp; Bergen County Line</i> | Private Bus Lines    |
| <i>Morris and Essex Line</i>              | NJ Transit Bus Lines |
| <i>Raritan Valley Line</i>                | Airports             |
| <b>Freight Rail Lines</b>                 |                      |
| <i>Freight Rail Lines</i>                 |                      |
| <i>Abandoned Freight Rail</i>             |                      |

## Boonton Township



1 inch = 0.491 miles



February 2015