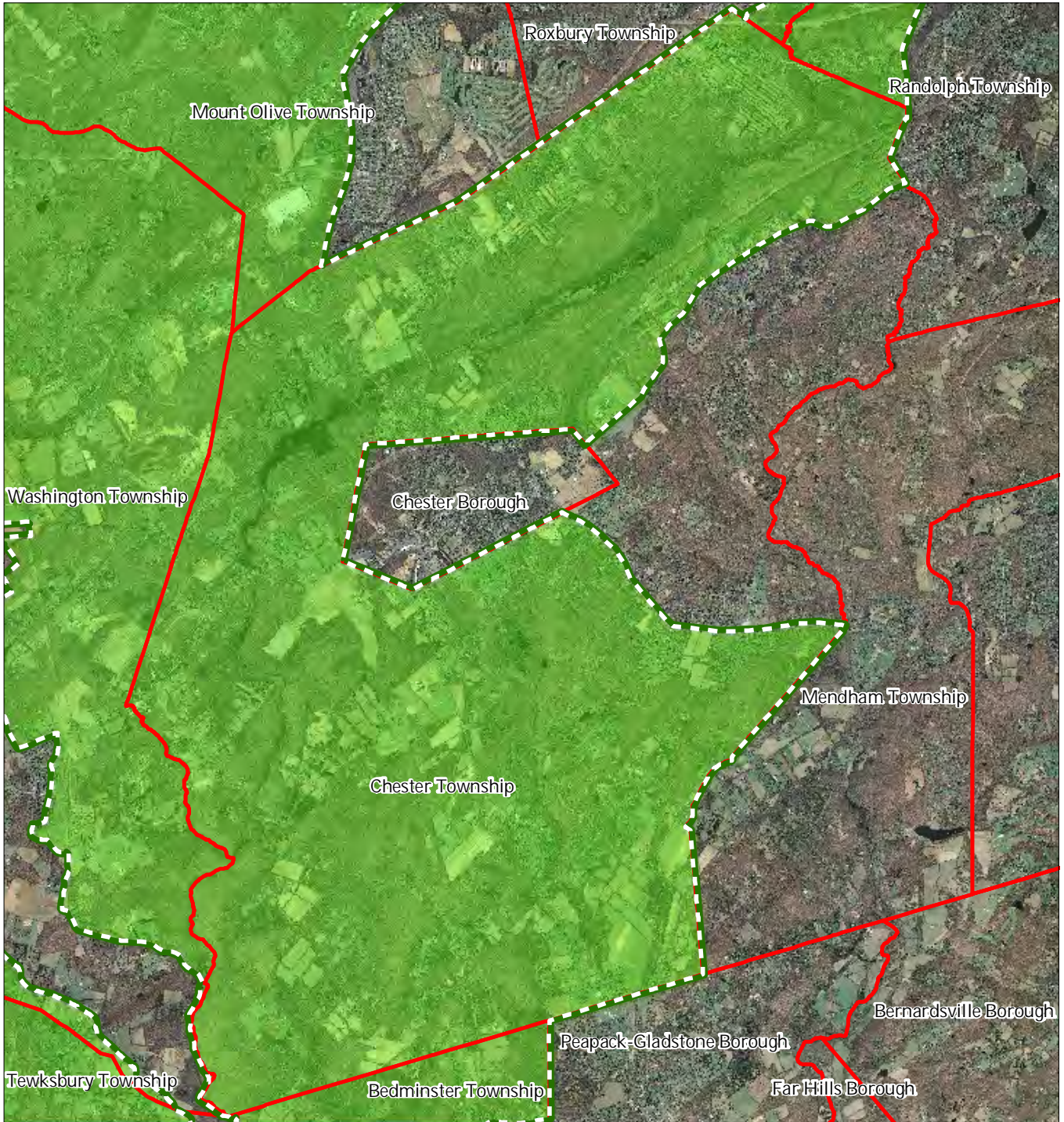


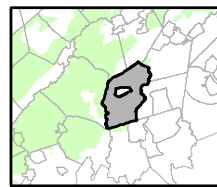
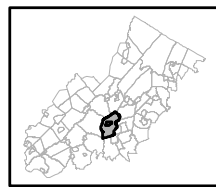


Figure 1: Preservation Area



-  Preservation Area
-  Municipal Boundaries

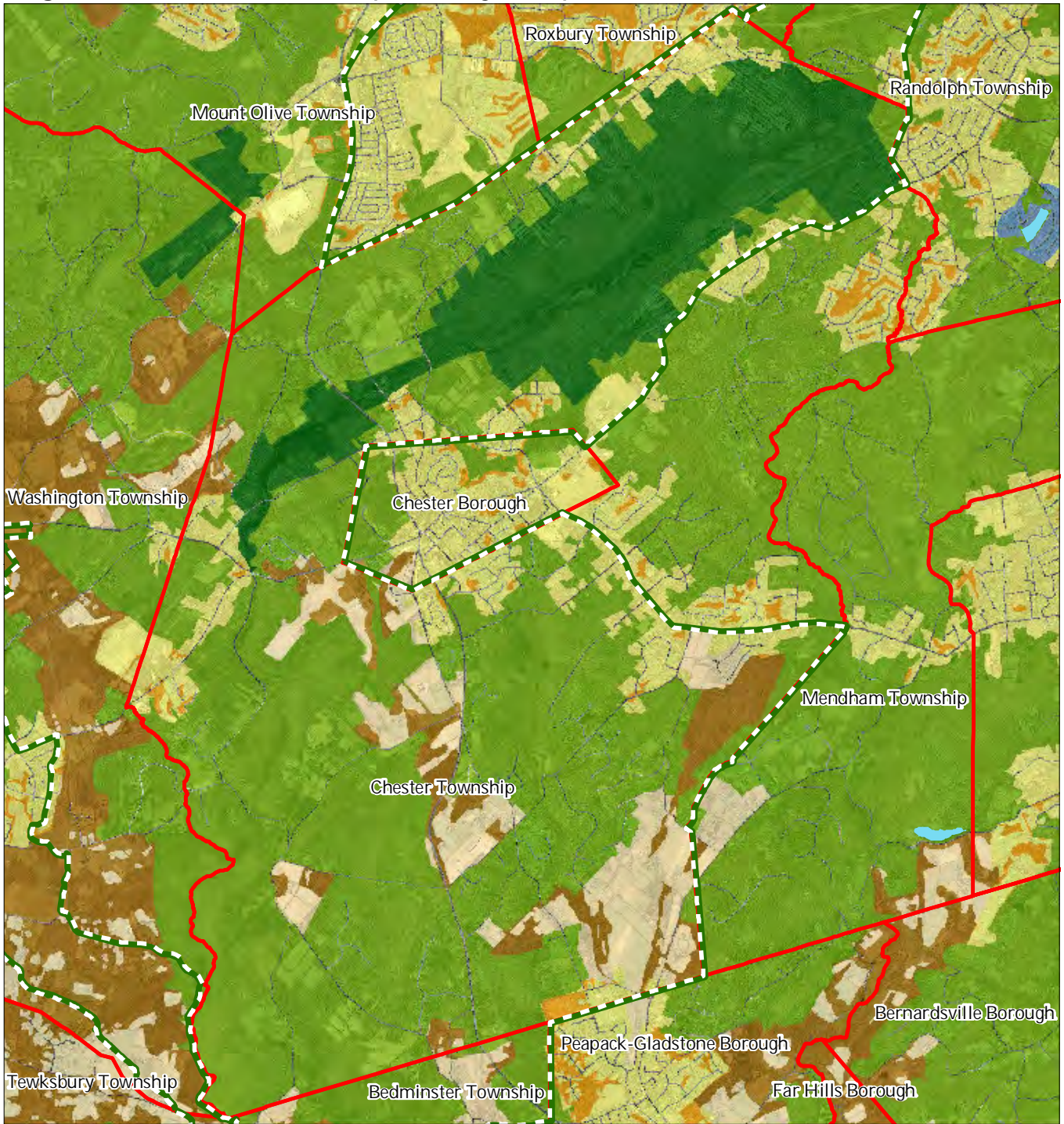
Chester Township



1 inch = 0.99 miles



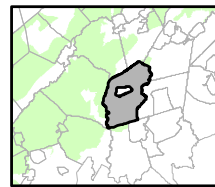
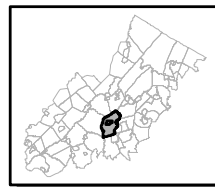
Figure 2: Land Use Capability Map Zones



Regional Master Plan Overlay Zone Designation

- | | |
|--|-----------------------------|
| Zone | |
| Protection | Lakes Greater Than 10 acres |
| Conservation | Preservation Area |
| Existing Community | Municipal Boundaries |
| Sub-Zone | |
| Existing Community Environmentally Constrained | |
| Conservation Environmentally Constrained | |
| Lake Community | |
| Wildlife Management | |

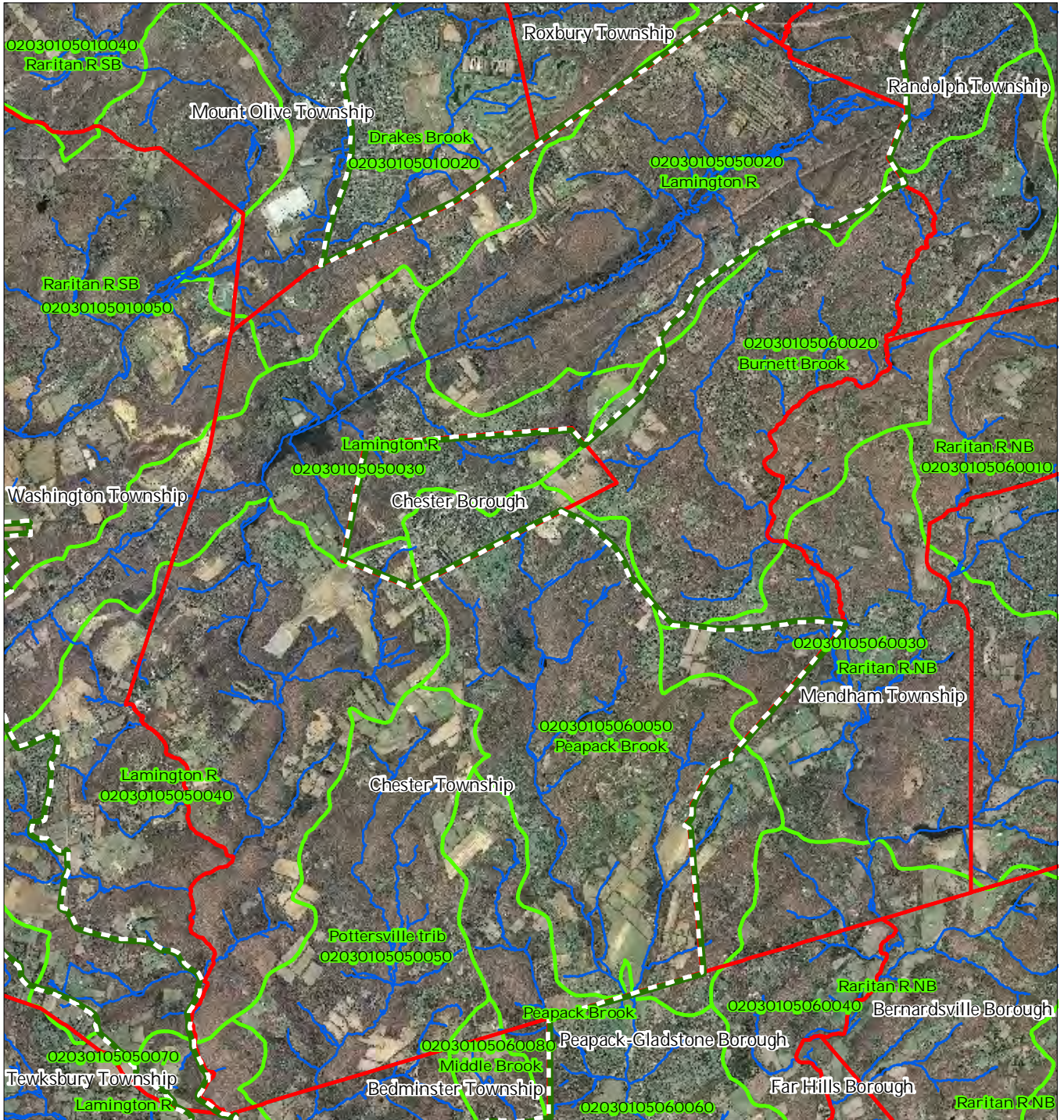
Chester Township



1 inch = 0.99 miles

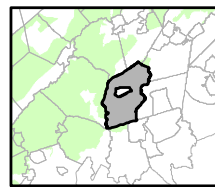
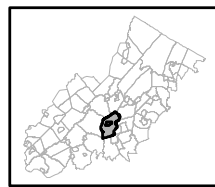


Figure 3: HUC 14 Boundaries



- HUC 14 Subwatersheds
- Stream Centerlines
- Preservation Area
- Municipal Boundaries

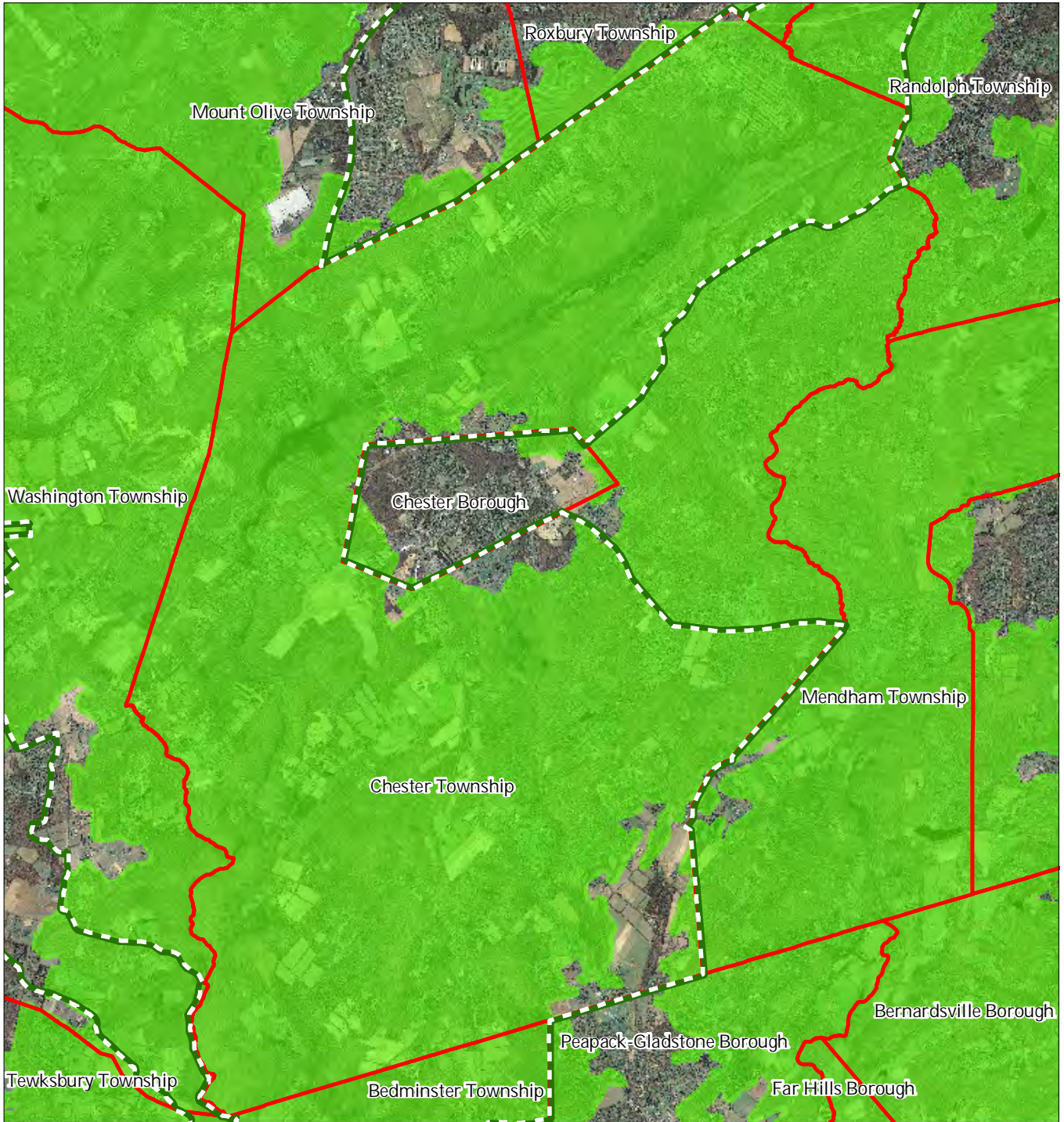
Chester Township






1 inch = 0.99 miles

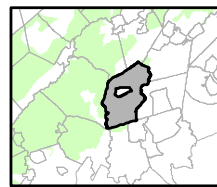
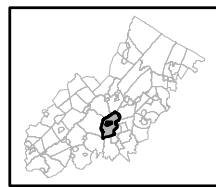


Figure 4: Forest Resource Area



-  Forest Resource Area
-  Preservation Area
-  Municipal Boundaries

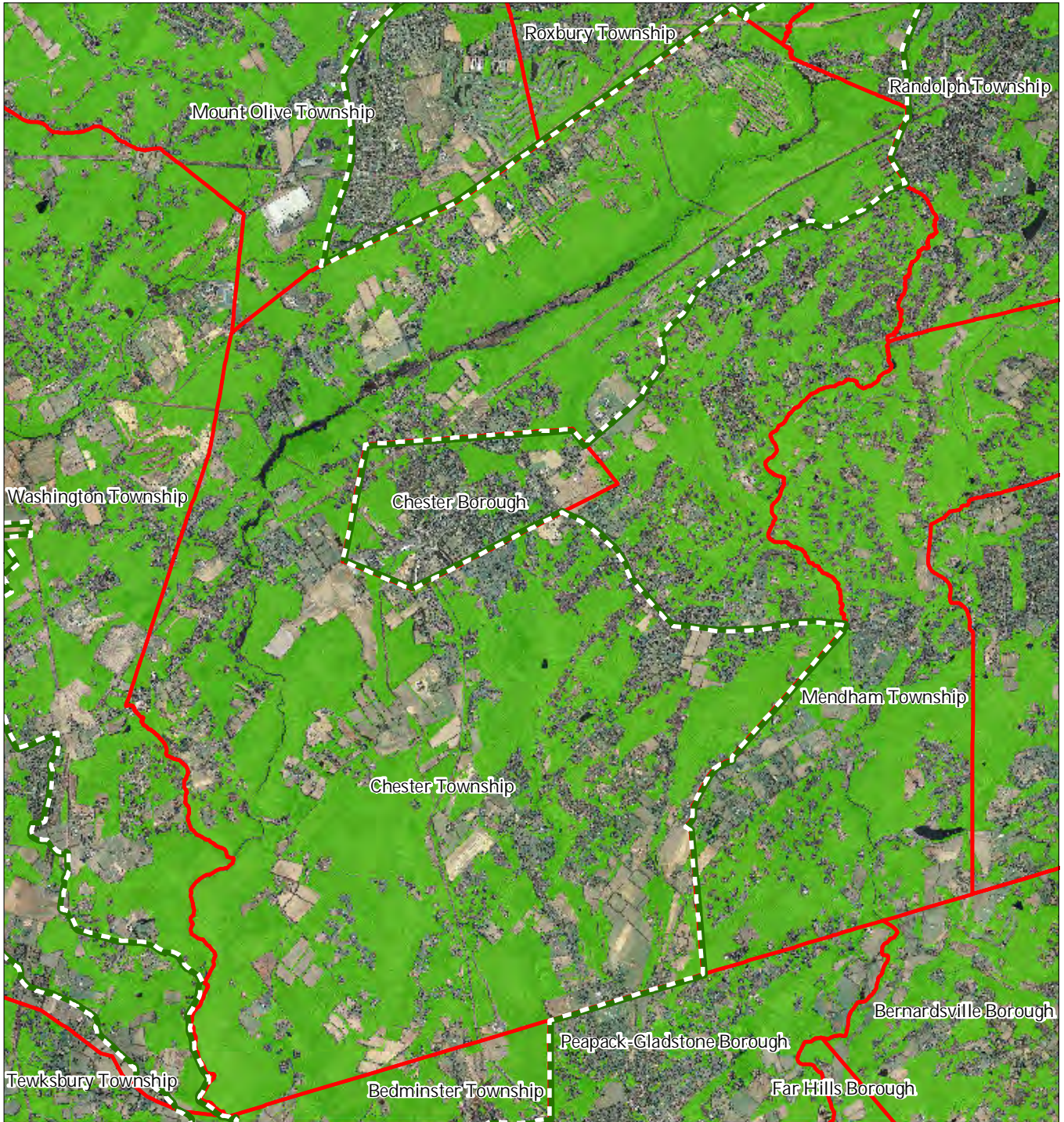
Chester Township






1 inch = 0.99 miles

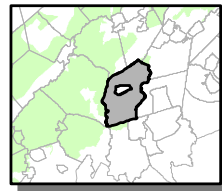


Figure 5: Total Forest Area



-  Forested Areas
-  Preservation Area
-  Municipal Boundaries

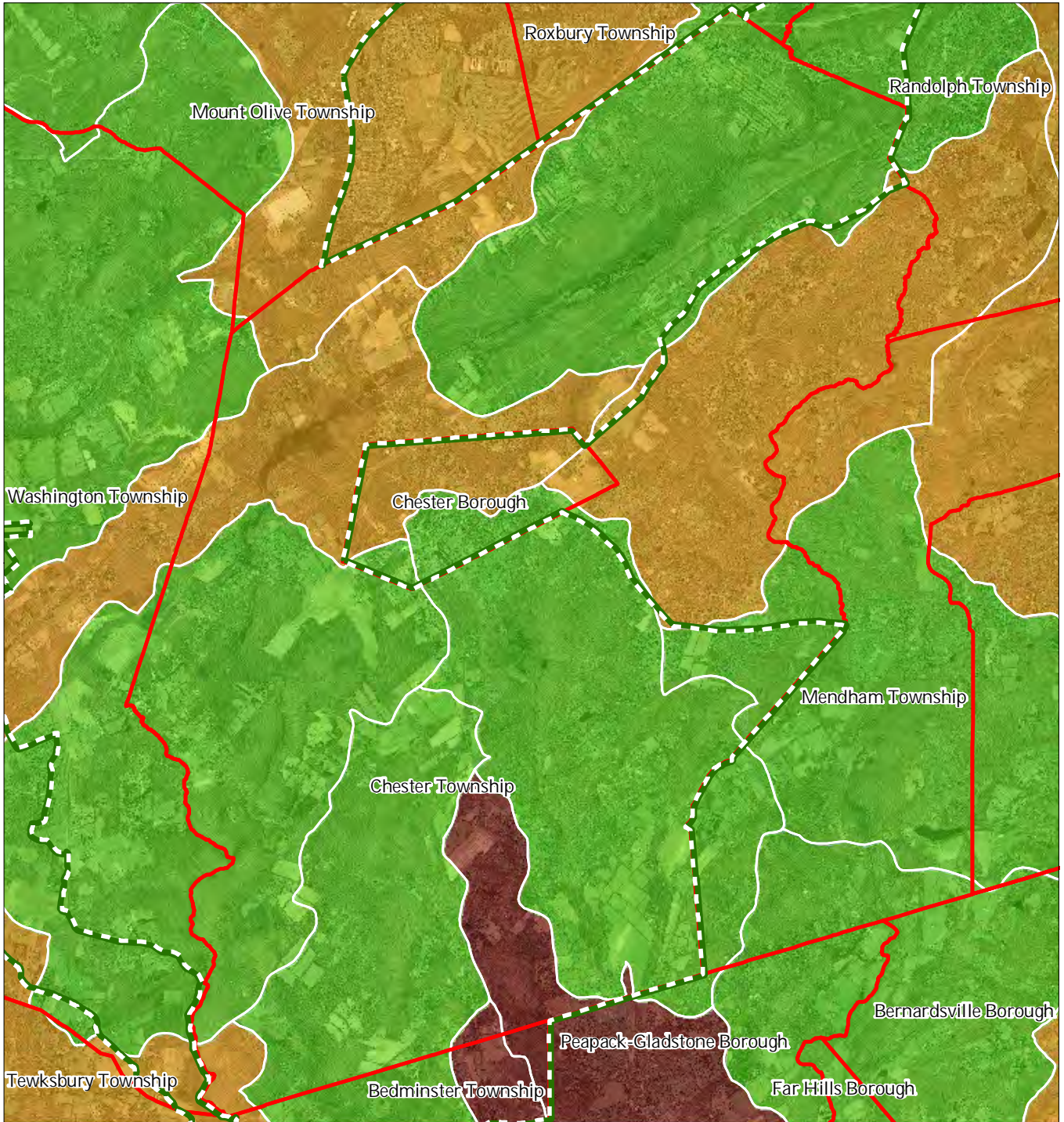
Chester Township








1 inch = 0.99 miles



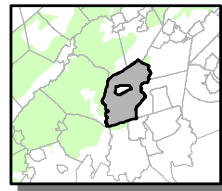
Figure 6: Forest Subwatersheds



Forest Integrity by HUC14 Subwatershed

-  *Low*
-  *Moderate*
-  *High*
-  Preservation Area
-  Municipal Boundaries

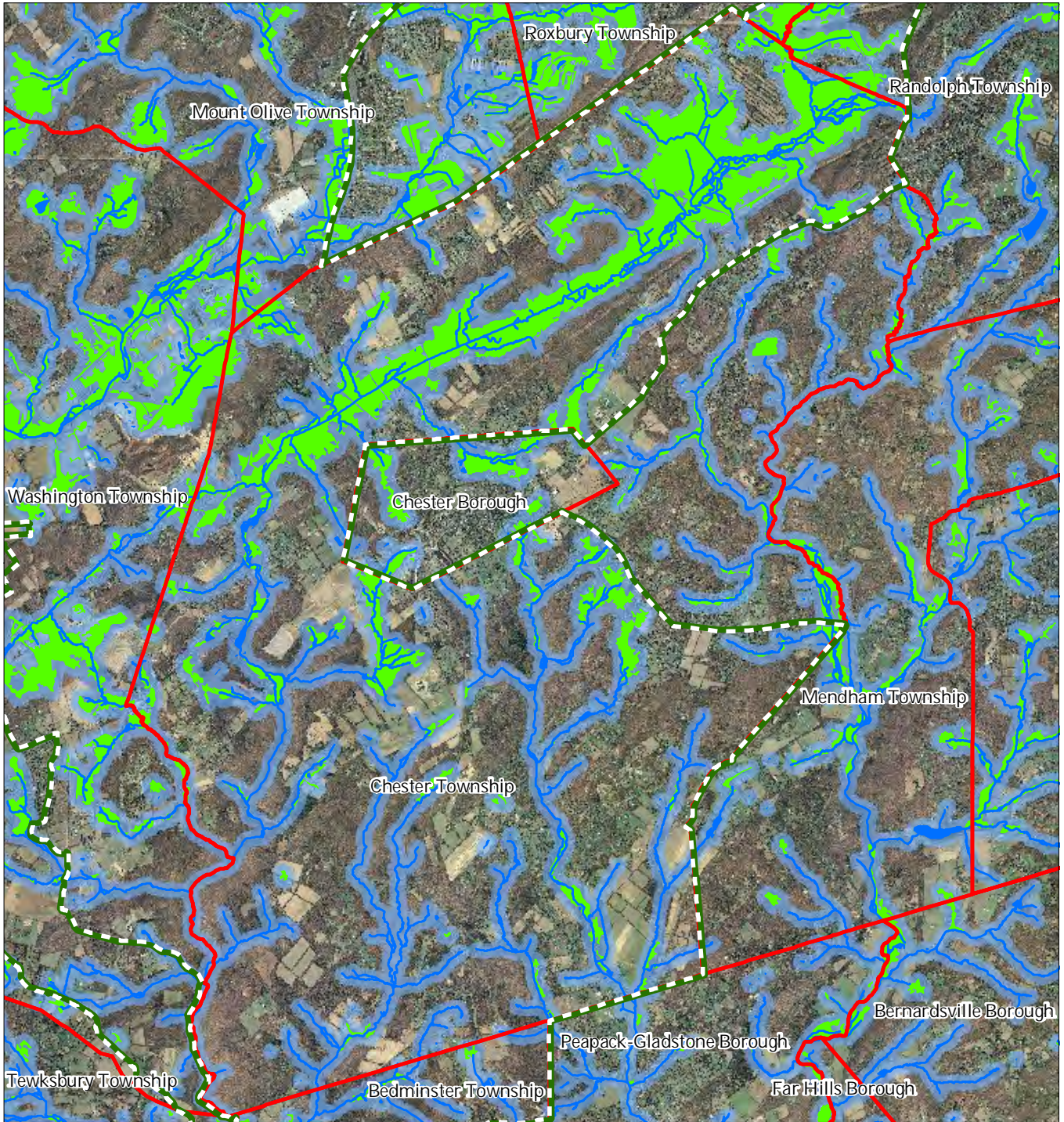
Chester Township



1 inch = 0.99 miles

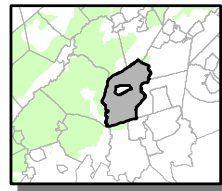
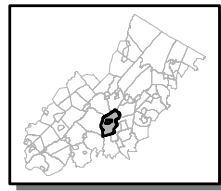


Figure 7: Highlands Open Waters



-  Highlands Open Water Buffers (300ft)
-  Streams
-  Wetlands
-  Lakes & Ponds
-  Preservation Area
-  Municipal Boundaries

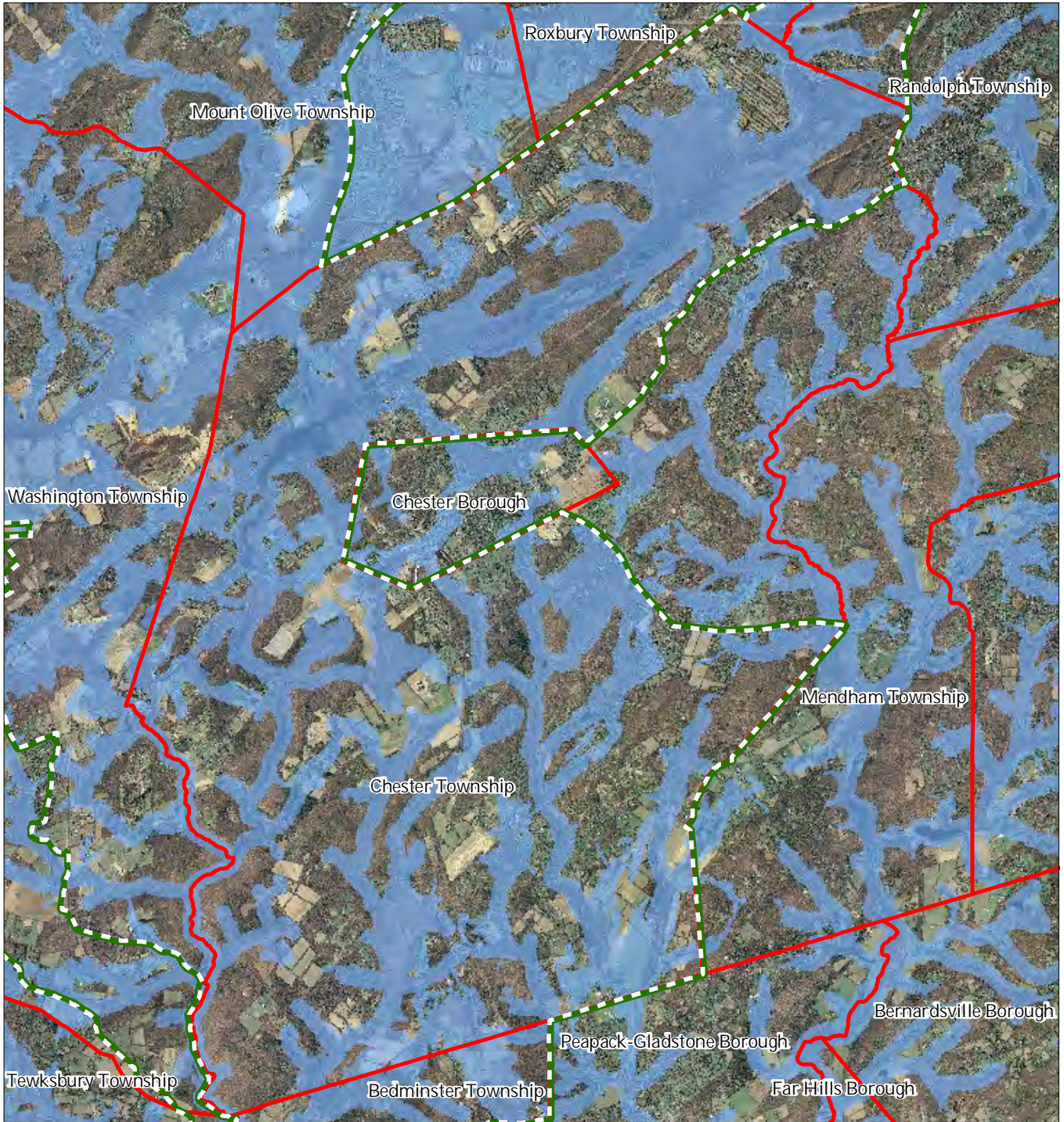
Chester Township



1 inch = 0.99 miles

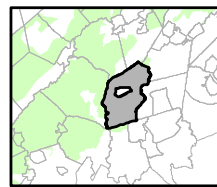
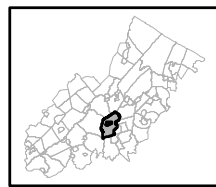


Figure 8: Highlands Riparian Areas



- Riparian Area
- Preservation Area
- Municipal Boundaries

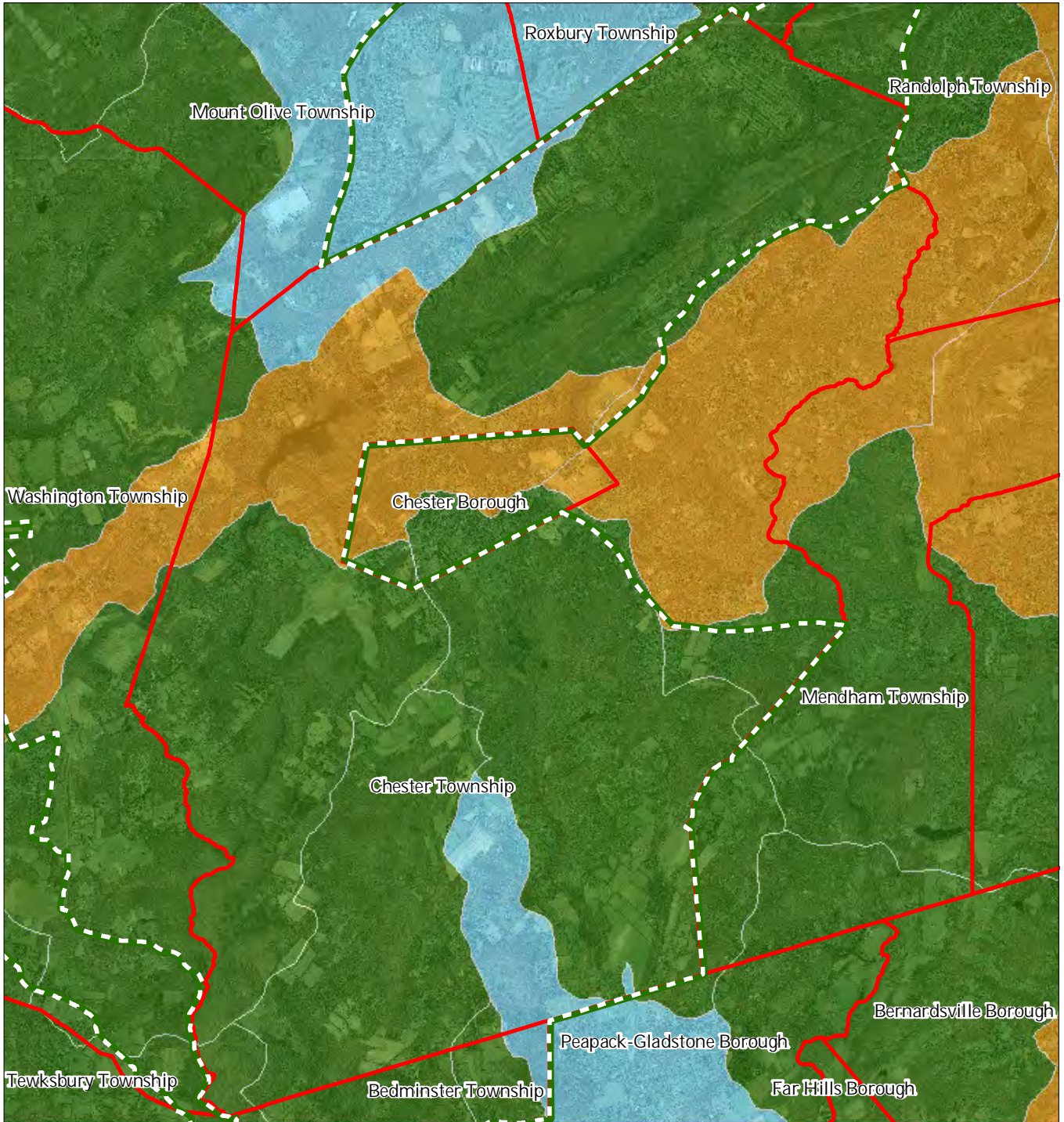
Chester Township



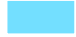




1 inch = 0.99 miles



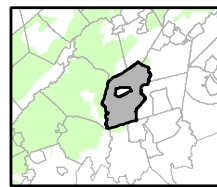
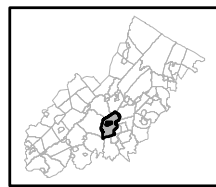
Figure 9: Watershed Values



Watershed Values by HUC14 Subwatershed

-  *Low*
-  *Moderate*
-  *High*
-  Preservation Area
-  Municipal Boundaries

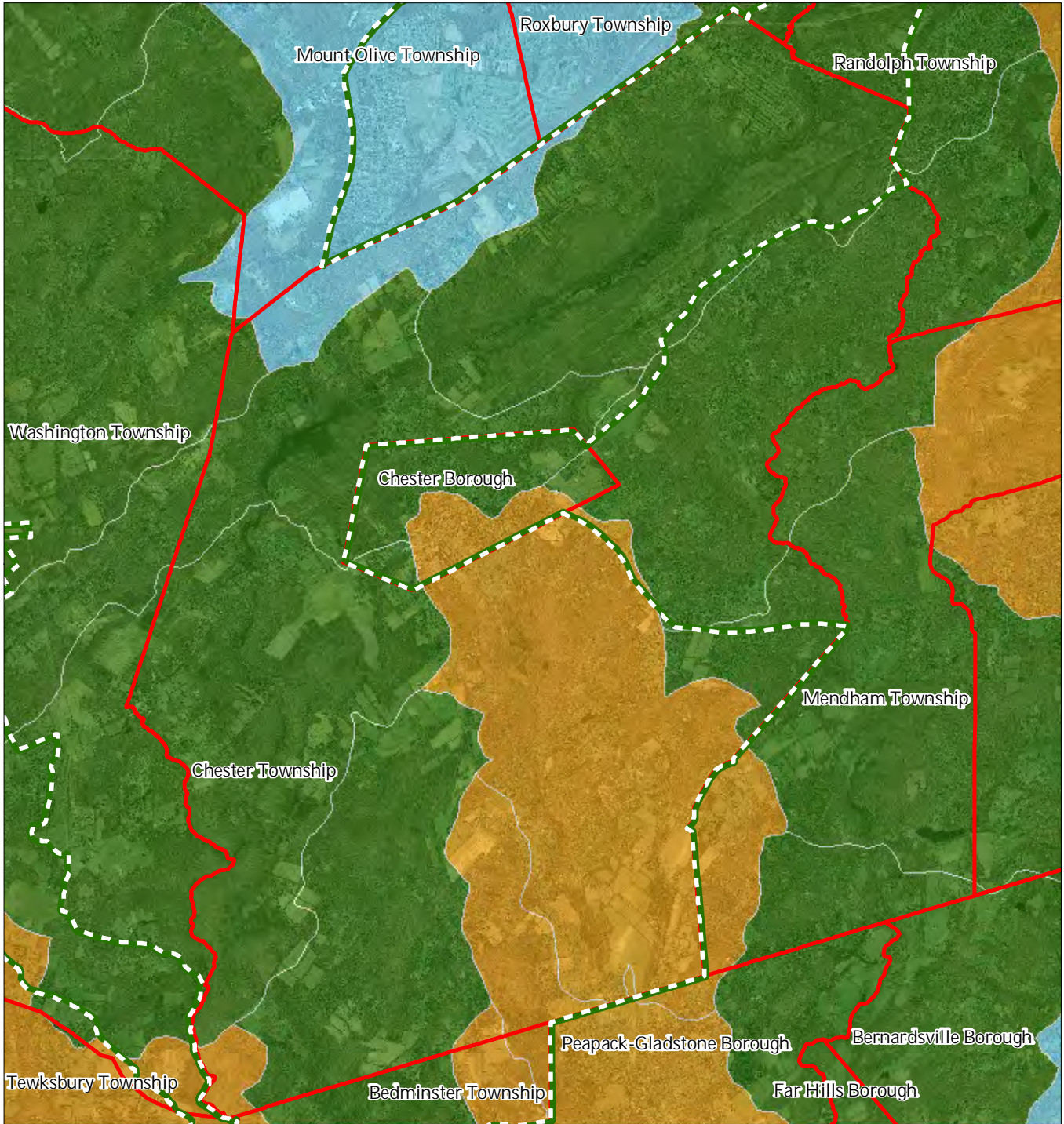
Chester Township








1 inch = 0.99 miles



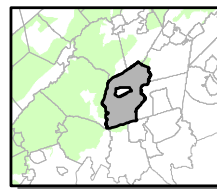
Figure 10: Riparian Integrity



Riparian Integrity by HUC14 Subwatershed

-  Low
-  Moderate
-  High
-  Preservation Area
-  Municipal Boundaries

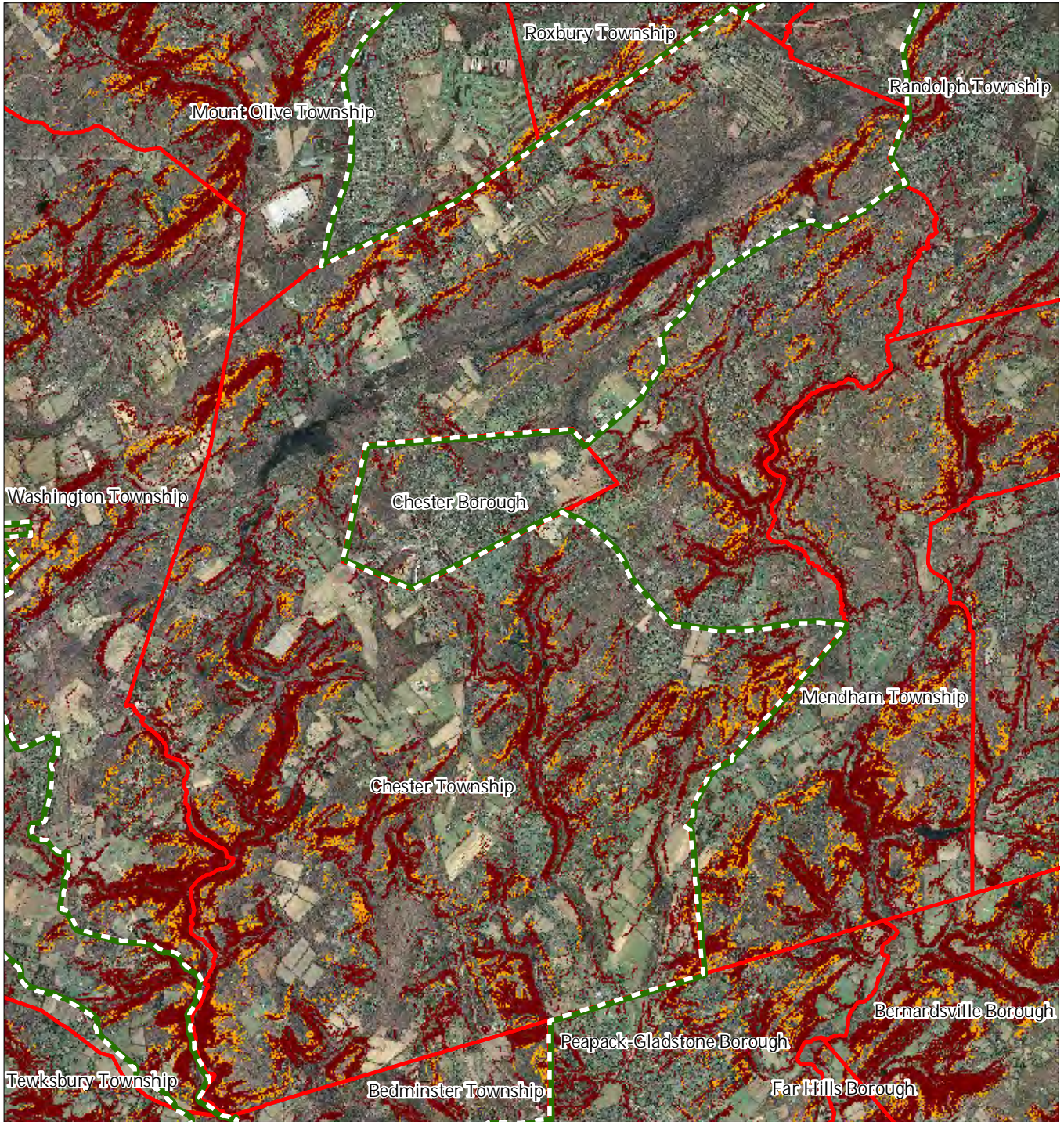
Chester Township



1 inch = 0.99 miles



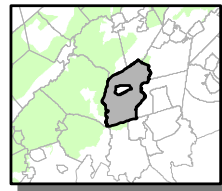
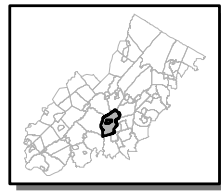
Figure 11: Steep Slope Protection Areas



Steep Slopes

-  Moderate
-  Severe
-  Preservation Area
-  Municipal Boundaries

Chester Township






1 inch = 0.99 miles

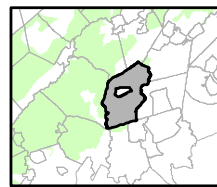
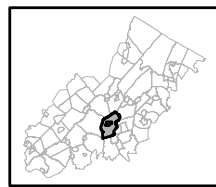


Figure 12: Critical Wildlife Habitat



-  Critical Wildlife Habitat
-  Preservation Area
-  Municipal Boundaries

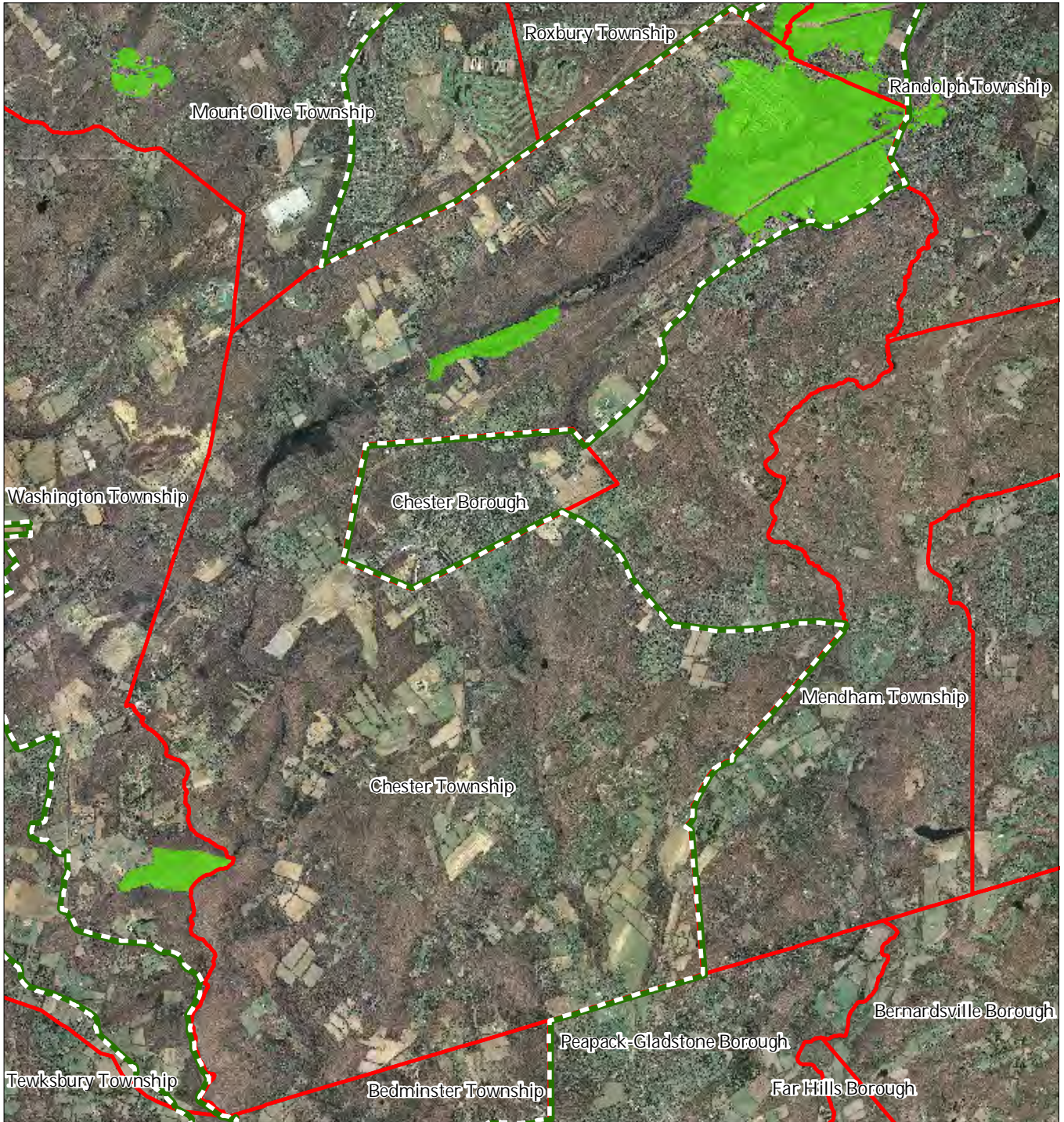
Chester Township






1 inch = 0.99 miles

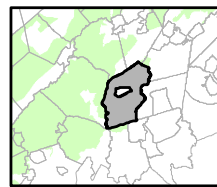
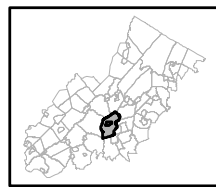


Figure 13: Significant Natural Areas



-  Significant Natural Areas
-  Preservation Area
-  Municipal Boundaries

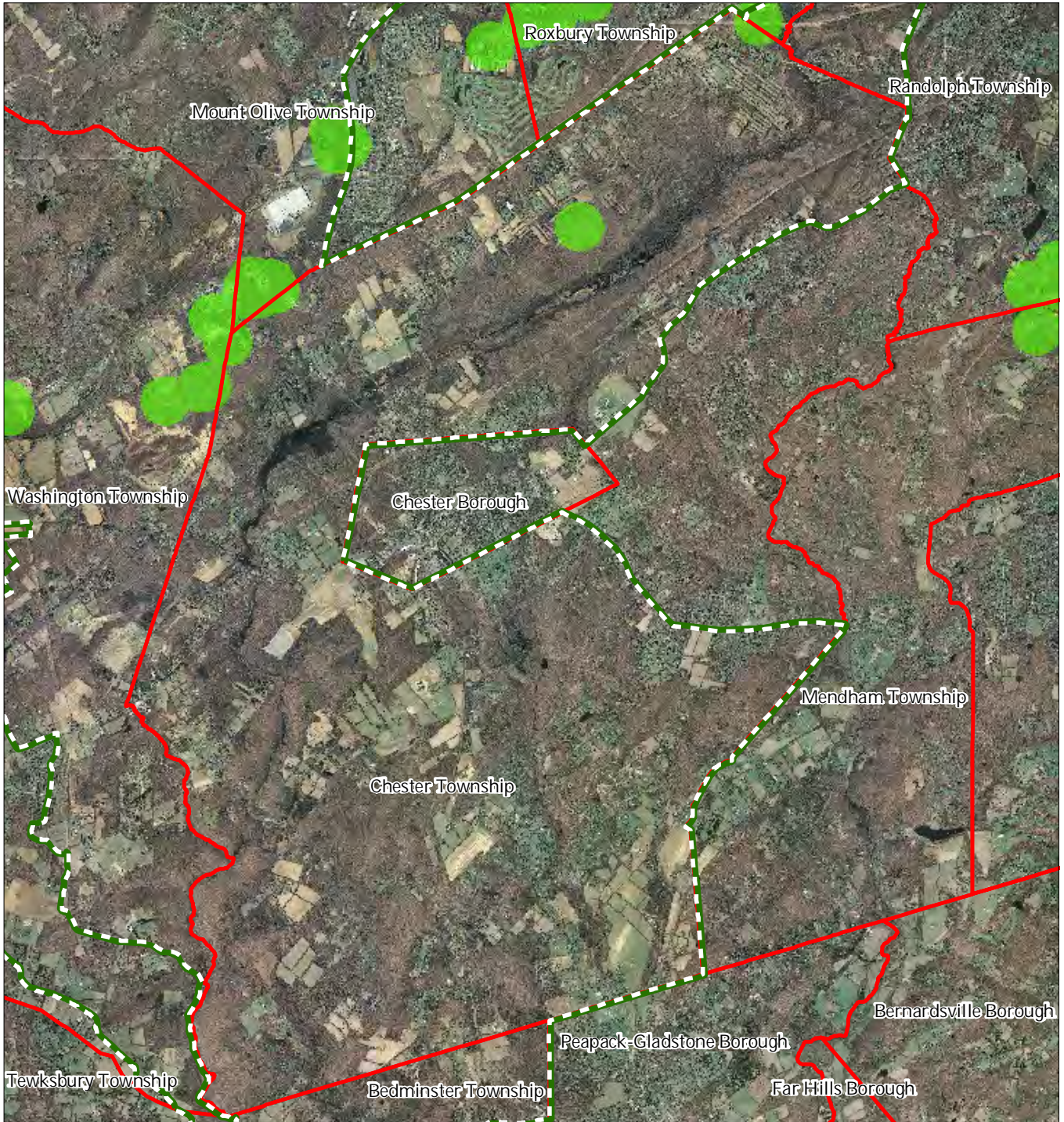
Chester Township






1 inch = 0.99 miles

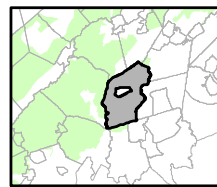
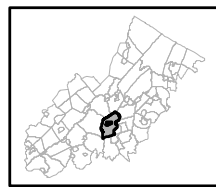


Figure 14: Vernal Pools



-  Vernal Pools + 1000ft Buffer
-  Preservation Area
-  Municipal Boundaries

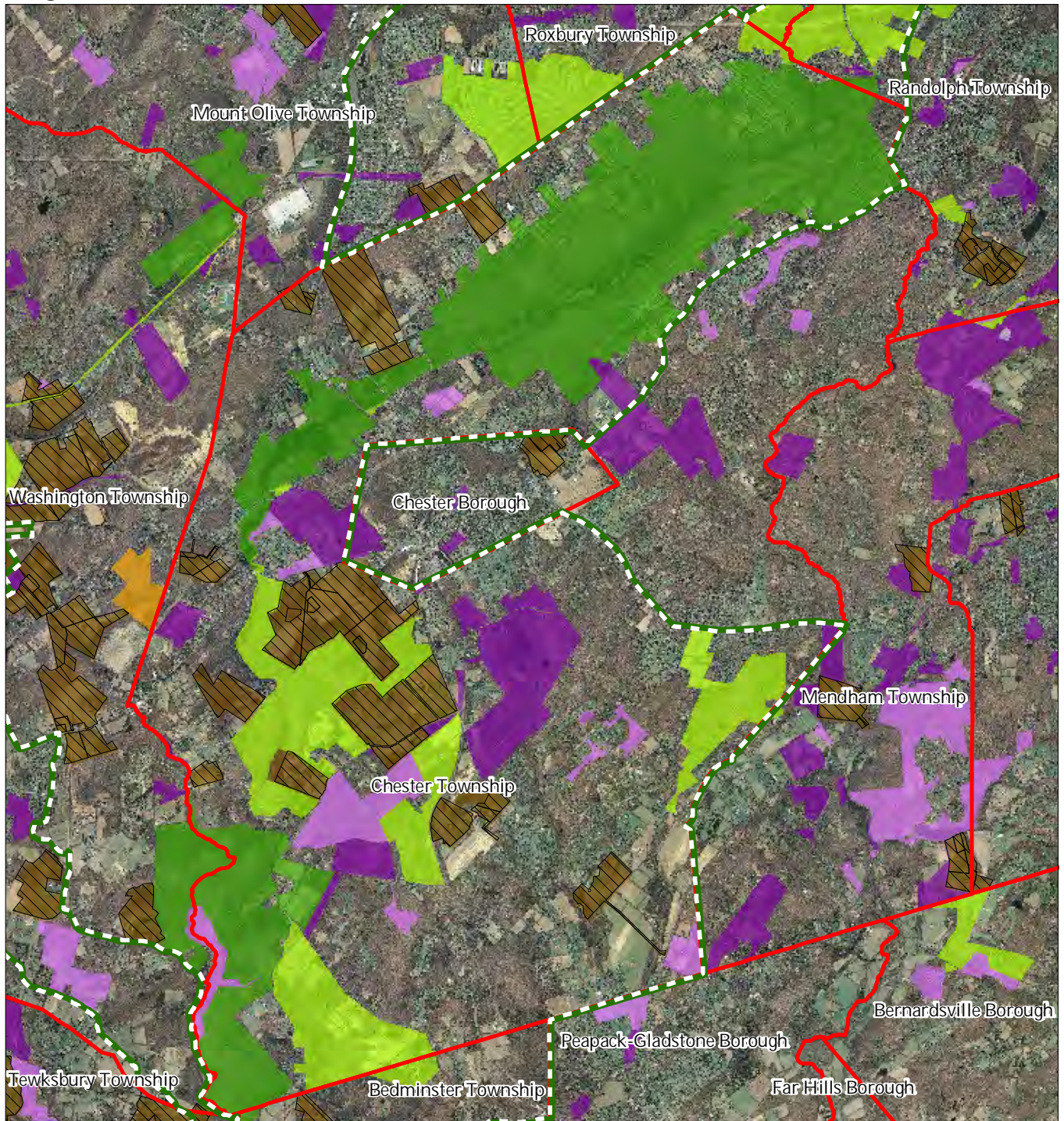
Chester Township



1 inch = 0.99 miles

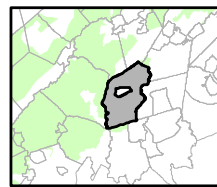
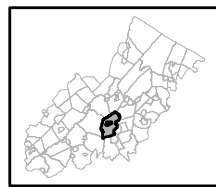


Figure 15: Preserved Lands



- | | |
|---|-------------------------------|
| Preserved Lands | Conservation Easements |
| Federal Open Space | Green Acres |
| State Open Space | SADC Easements |
| County Open Space | SADC Final |
| Municipal Open Space | SADC Preserved |
| Non-Profit/Private Open Space | Municipal Boundaries |
| Water Supply Watershed Lands | Preservation Area |
| Preserved Farmland | |
| Highlands Transfer of Development Lands | |

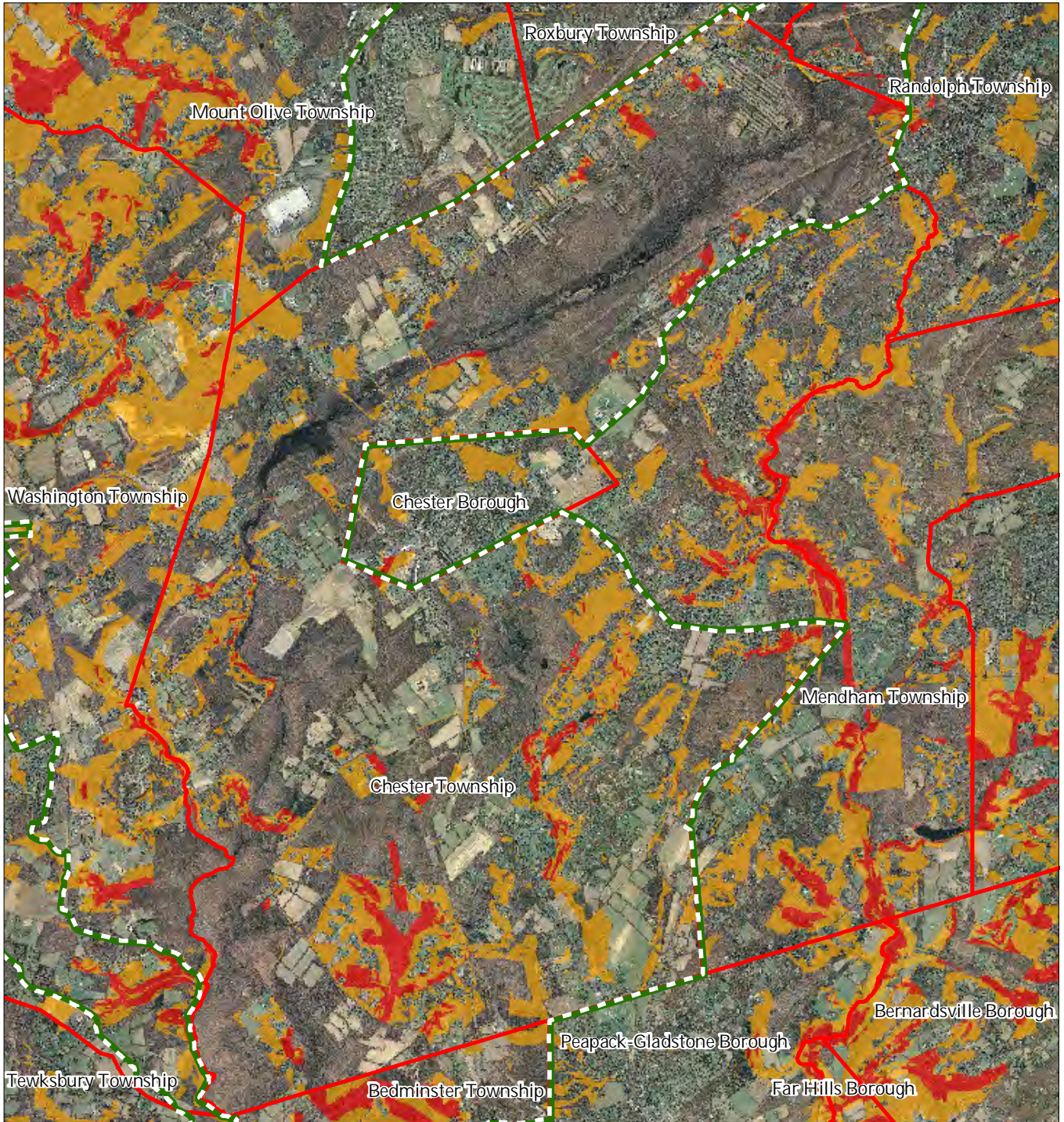
Chester Township



1 inch = 0.99 miles



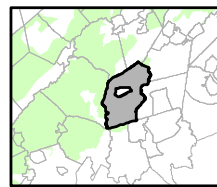
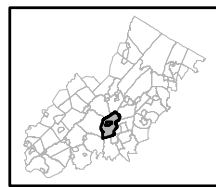
Figure 16: Highlands Conservation Priority Areas



Conservation Priority Area

-  Moderate
-  High
-  Preservation Area
-  Municipal Boundaries

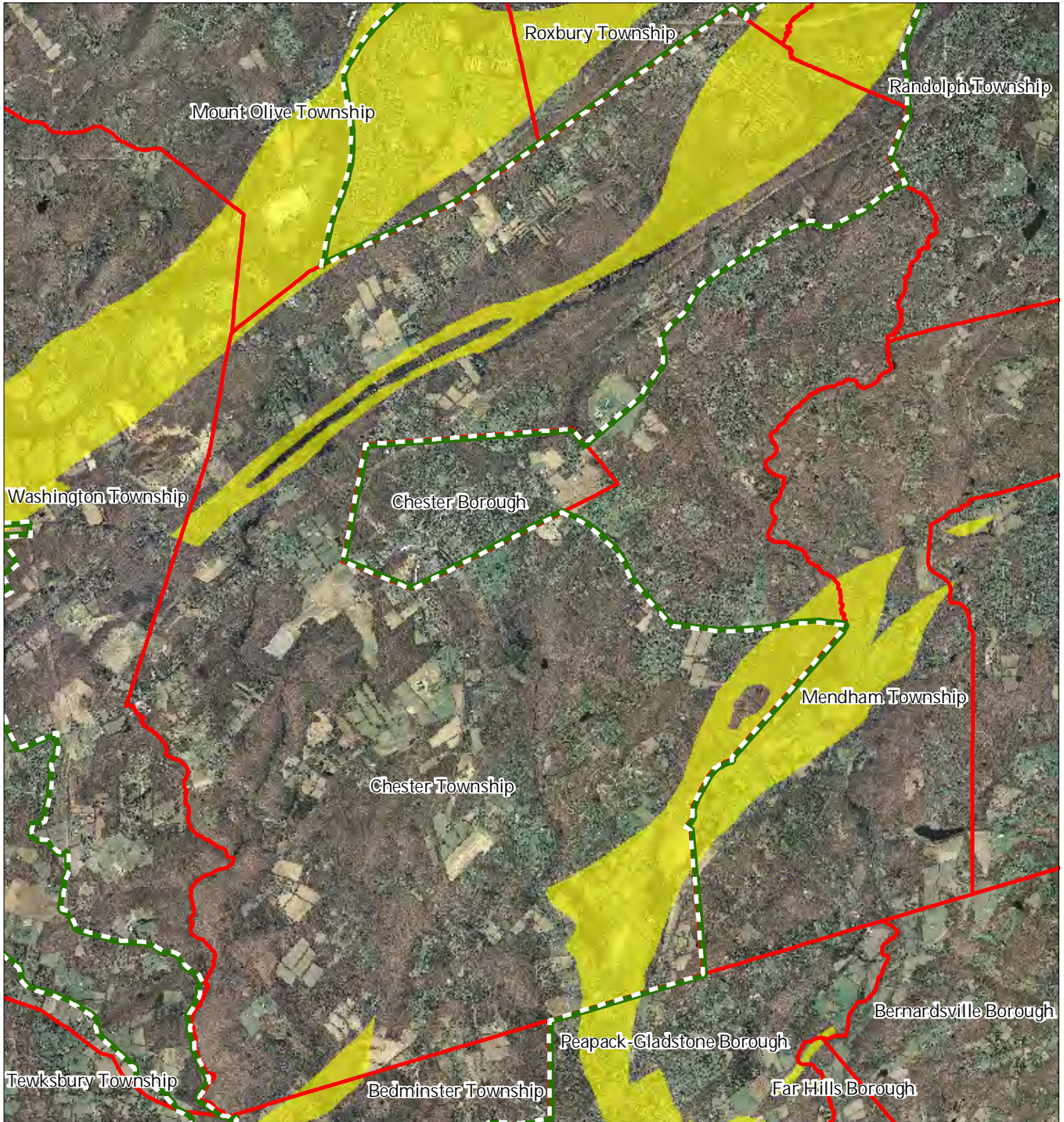
Chester Township



1 inch = 0.99 miles

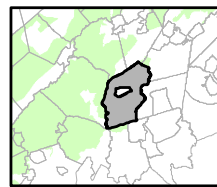
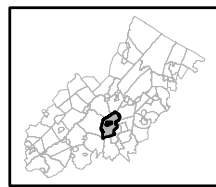


Figure 18: Carbonate Rock Areas



- Carbonate Rock Area
- Preservation Area
- Municipal Boundaries

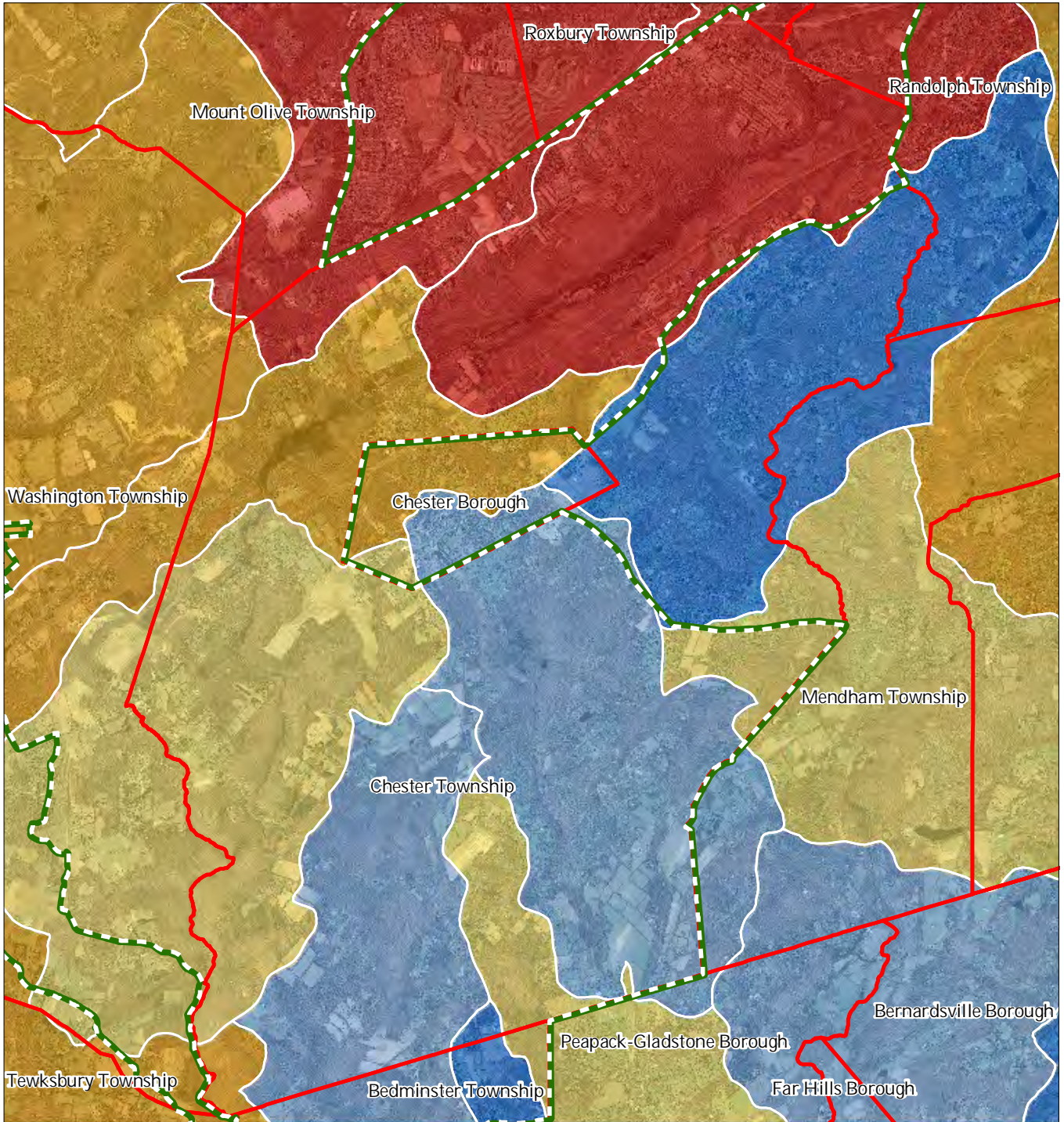
Chester Township



1 inch = 0.99 miles



Figure 20: Net Water Availability



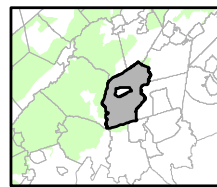
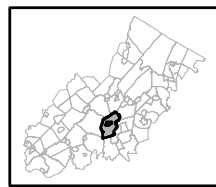
Net Water Availability By HUC14

Million Gallons Per Day (MGD)

- 0.10 - 0.39
- 0.05 - 0.09
- 0.00 - 0.04
- 0.09 - 0.00
- 0.99 - -0.10
- 7.10 - -1.00

- Preservation Area
- Municipal Boundaries

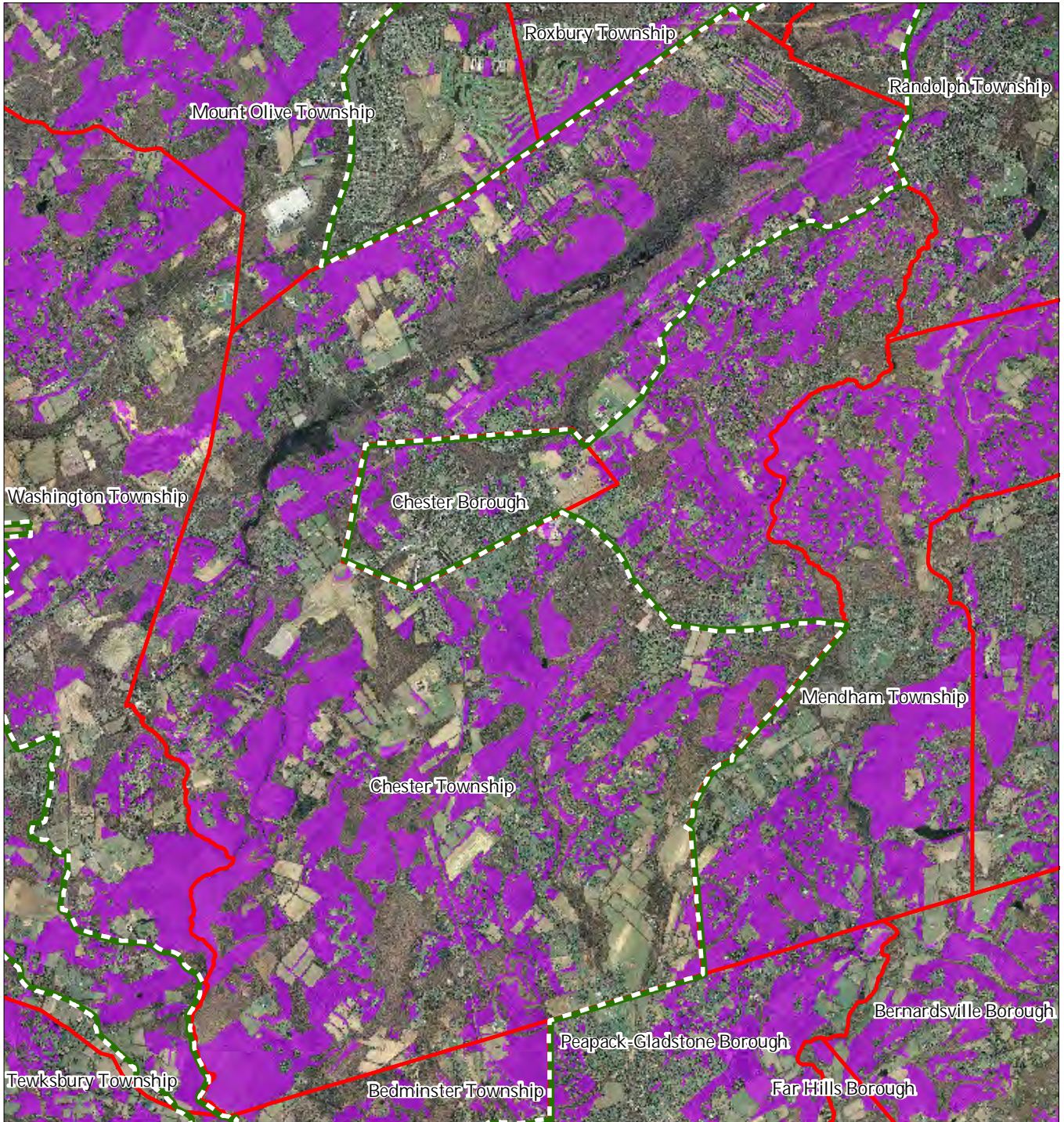
Chester Township






1 inch = 0.99 miles

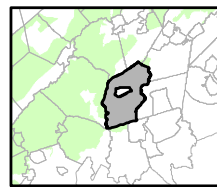
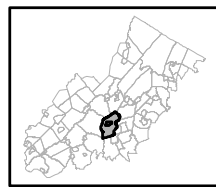


Figure 21: Prime Ground Water Recharge Areas



-  Prime Groundwater Recharge Areas
-  Preservation Area
-  Municipal Boundaries

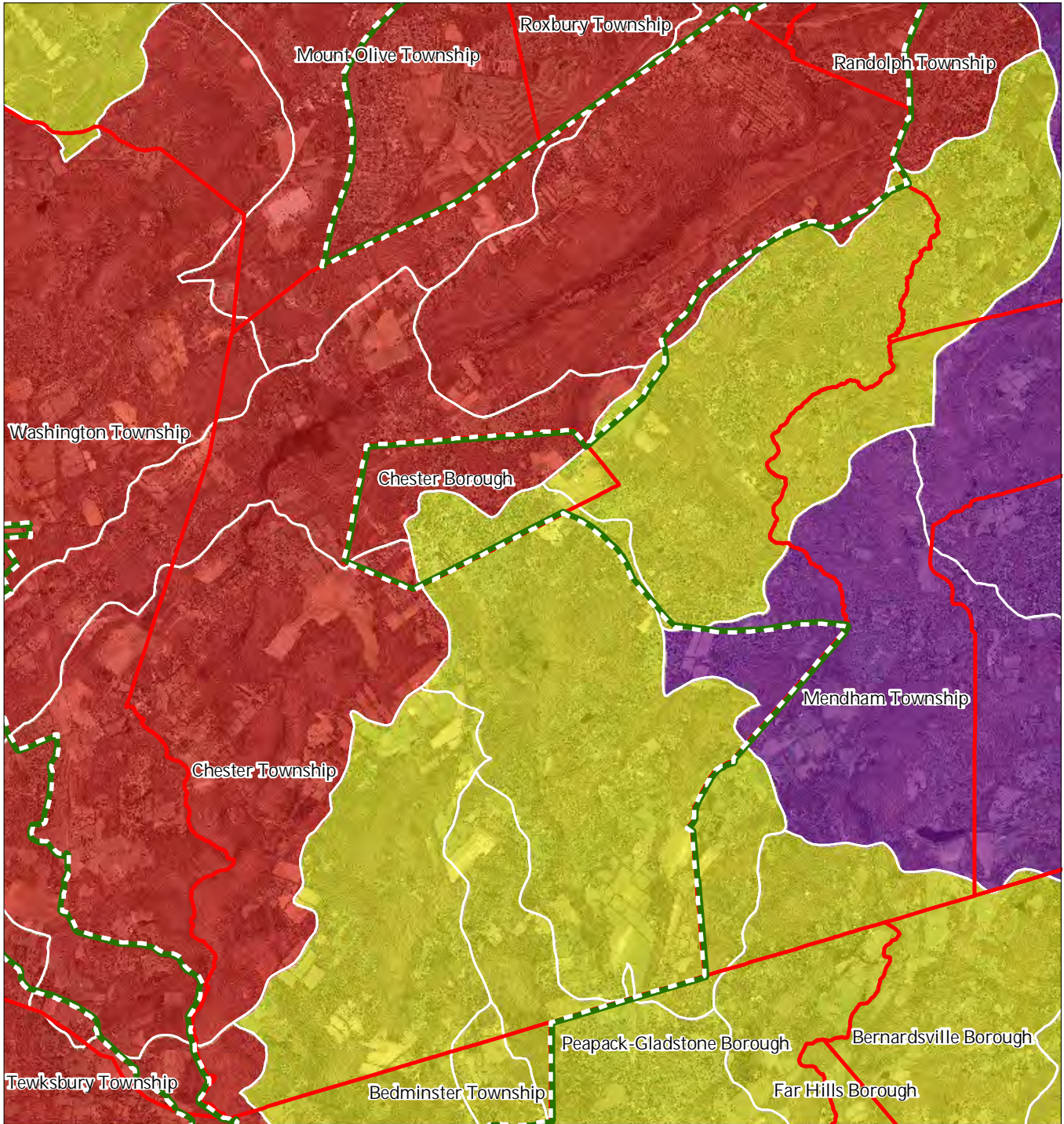
Chester Township









1 inch = 0.99 miles



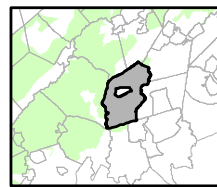
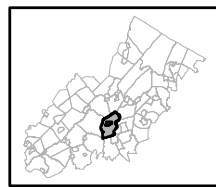
Figure 22: HUC 14s on NJDEP Impaired Waters List



Impaired Waters Overall Assessment by HUC14 Subwatershed

-  Non Impacted
-  Insufficient Data Available
-  Moderate
-  Water Quality Impaired
-  Preservation Area
-  Municipal Boundaries

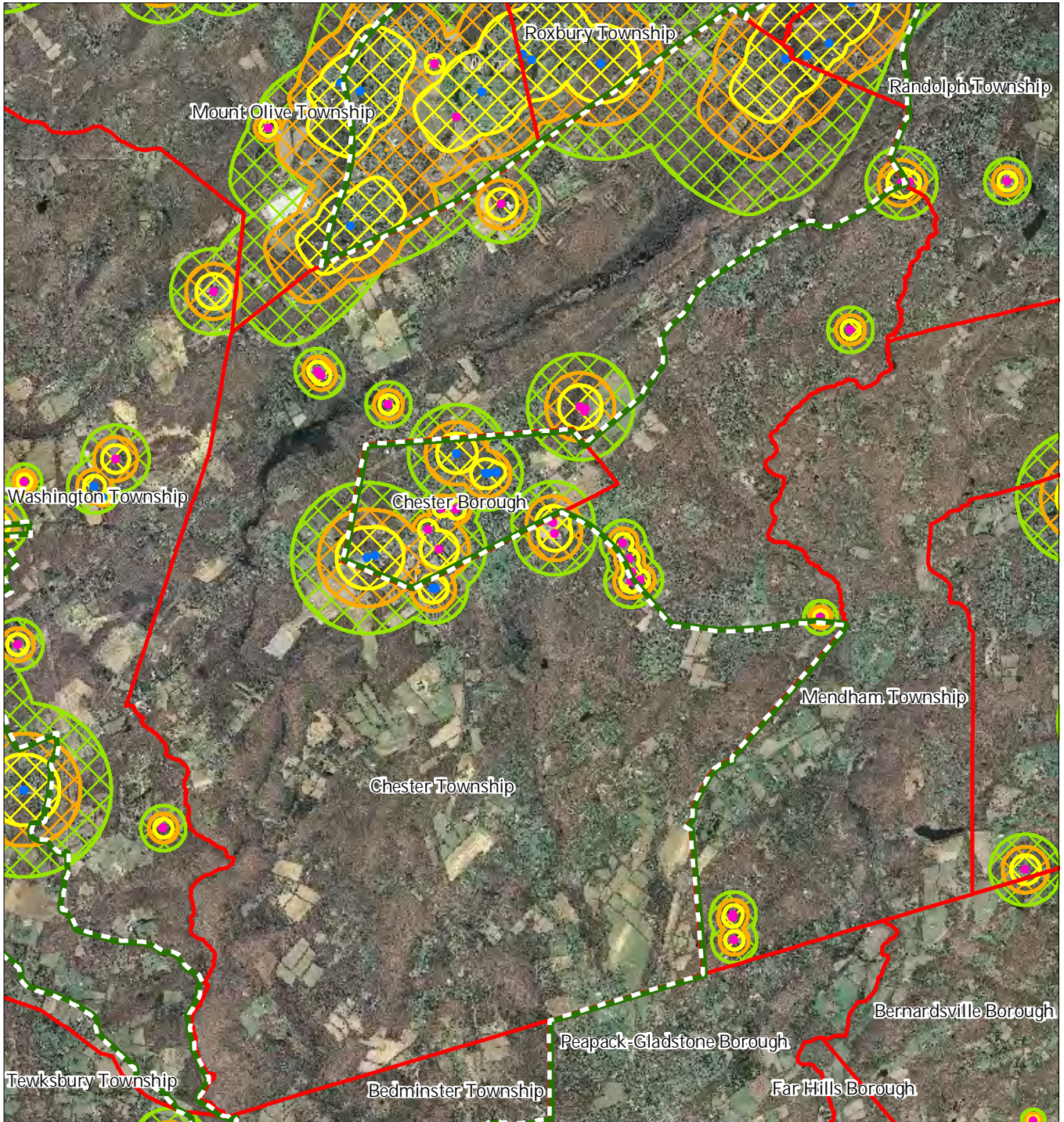
Chester Township



1 inch = 0.99 miles





Figure 23: Wellhead Protection Areas



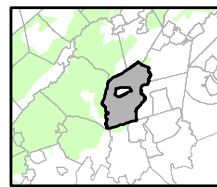
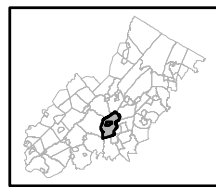
- Public Community Wells
- Public Non-Community Wells

Wellhead Protection Areas

-  2-Year Tier
-  5-Year Tier
-  12-Year Tier

-  Preservation Area
-  Municipal Boundaries

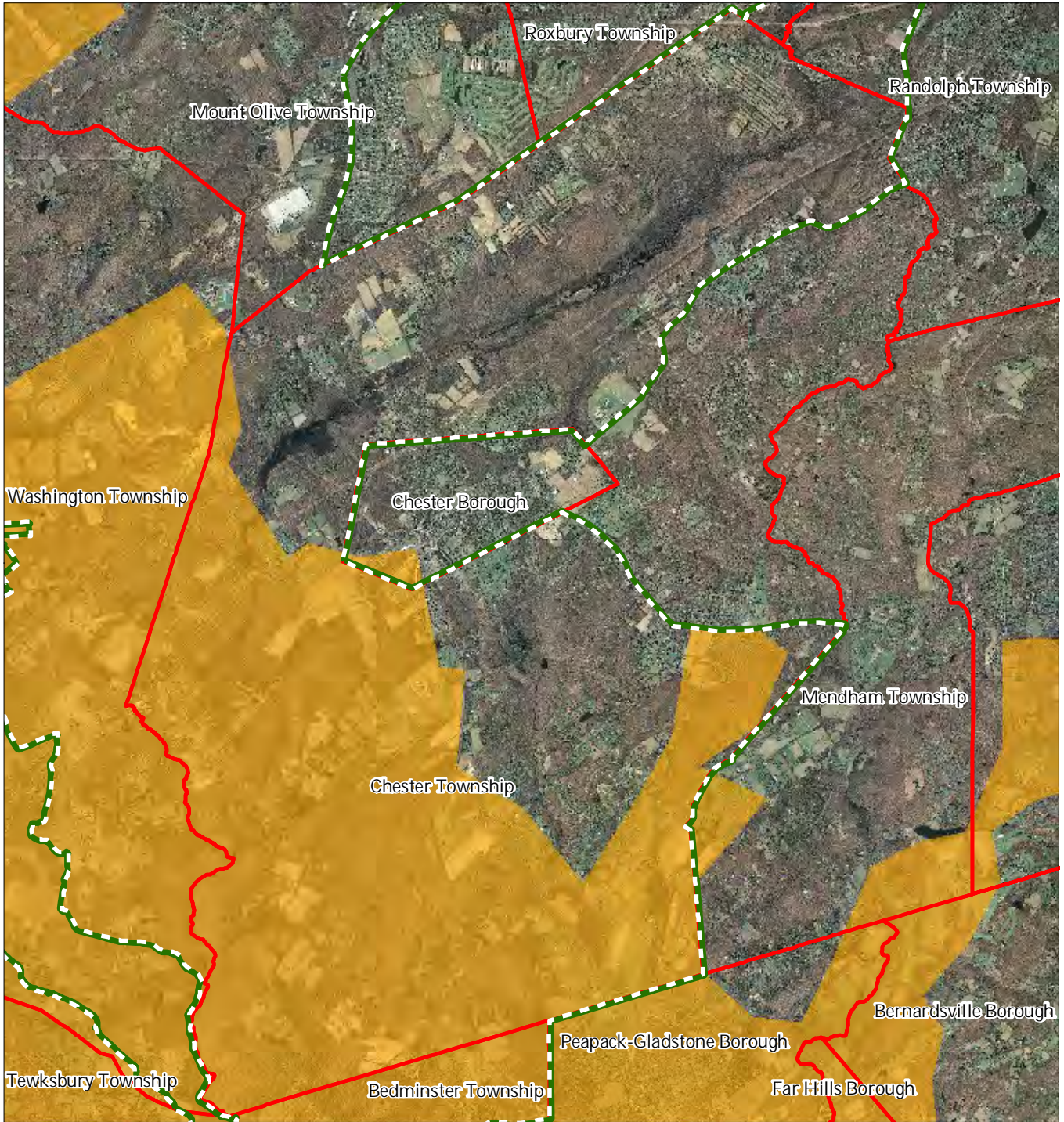
Chester Township



1 inch = 0.99 miles

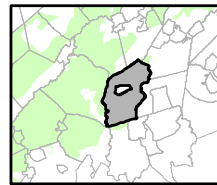
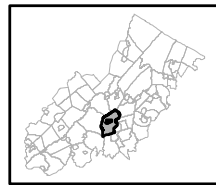


Figure 24: Agricultural Resource Area



- Agricultural Resource Area
- Preservation Area
- Municipal Boundaries

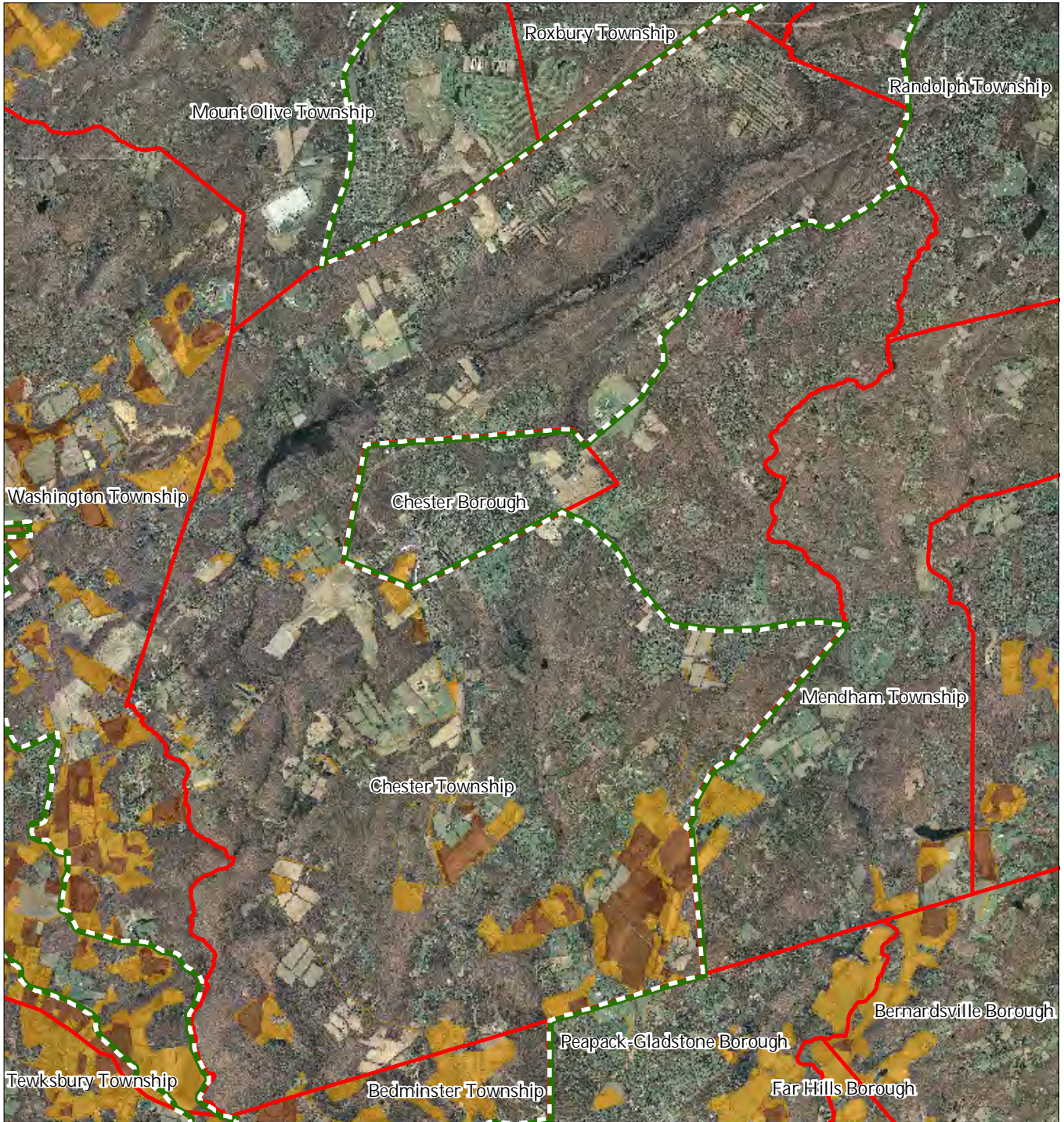
Chester Township




1 inch = 0.99 miles



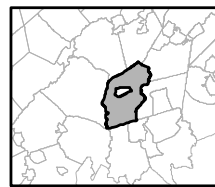
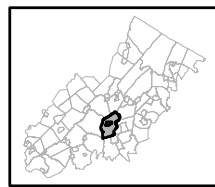
Figure 25: Agricultural Priority Area



Agricultural Priority Area

-  Moderate
-  High
-  Preservation Area
-  Municipal Boundaries

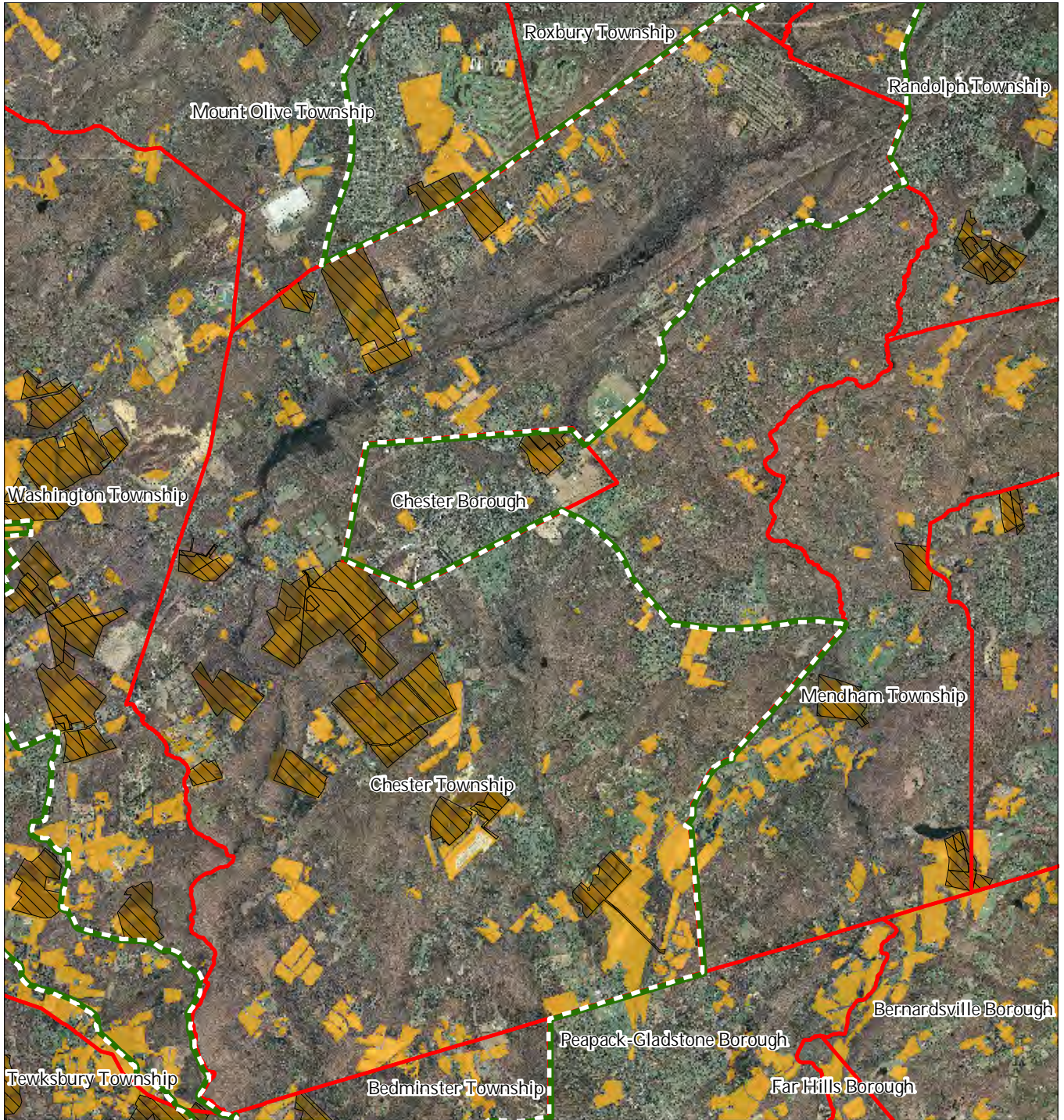
Chester Township



1 inch = 0.99 miles



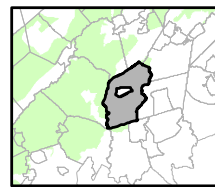
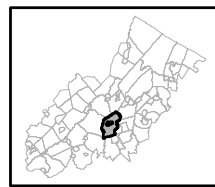
Figure 26: Preserved Farms, SADC Easements, All Agricultural Uses



SADC Easements

-  *SADC Final*
-  *SADC Preserved*
-  Preserved Farmland
-  Agriculture Uses
-  Preservation Area
-  Municipal Boundaries

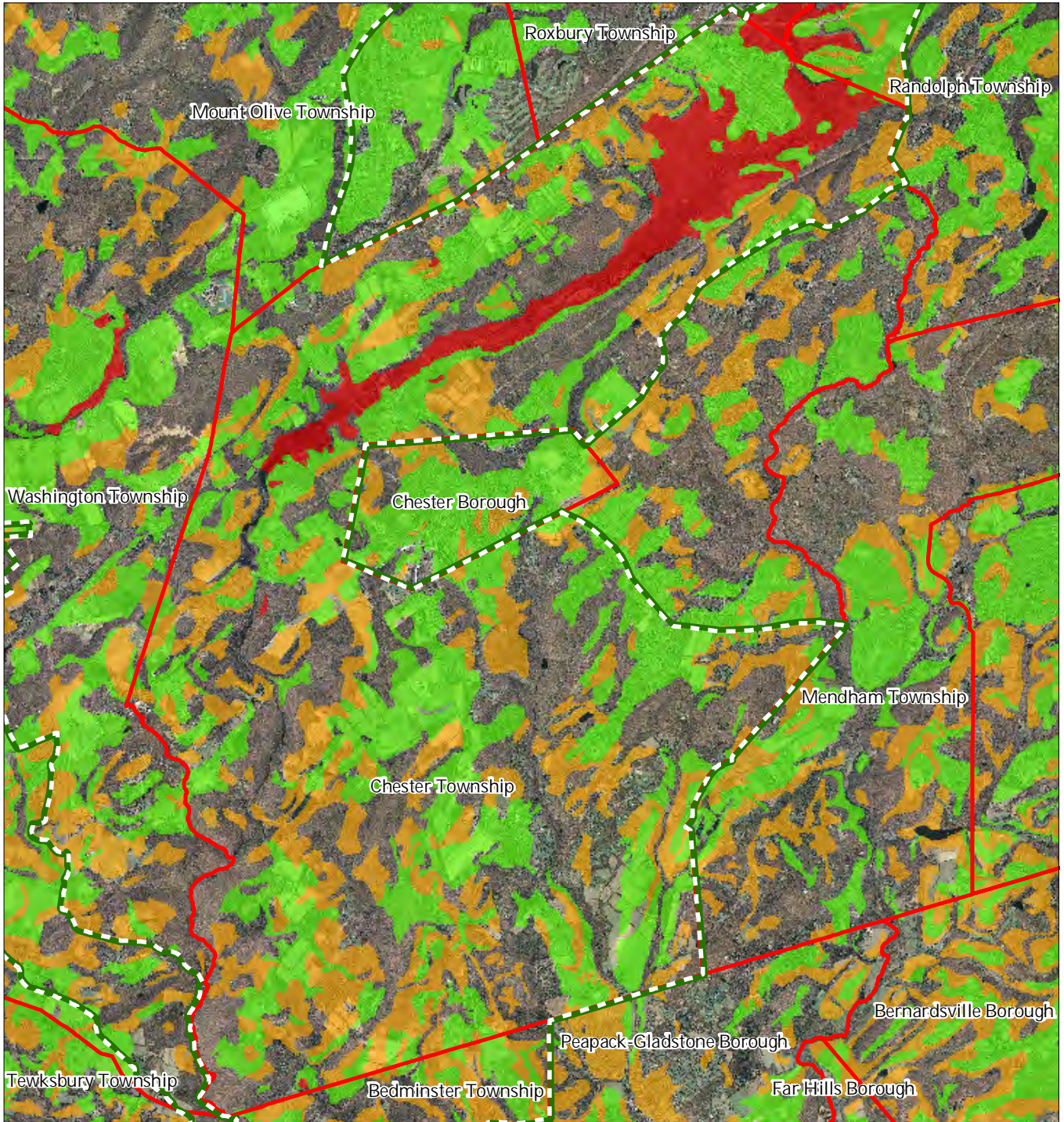
Chester Township



1 inch = 0.99 miles



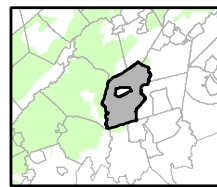
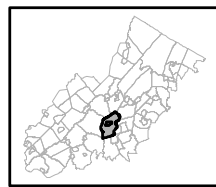
Figure 27: Important Farmland Soils



Important Farmland Soils

- Prime Farmland
- Farmland of Local Importance
- Farmland of Statewide Importance
- Farmland of Unique Importance
- Preservation Area
- Municipal Boundaries

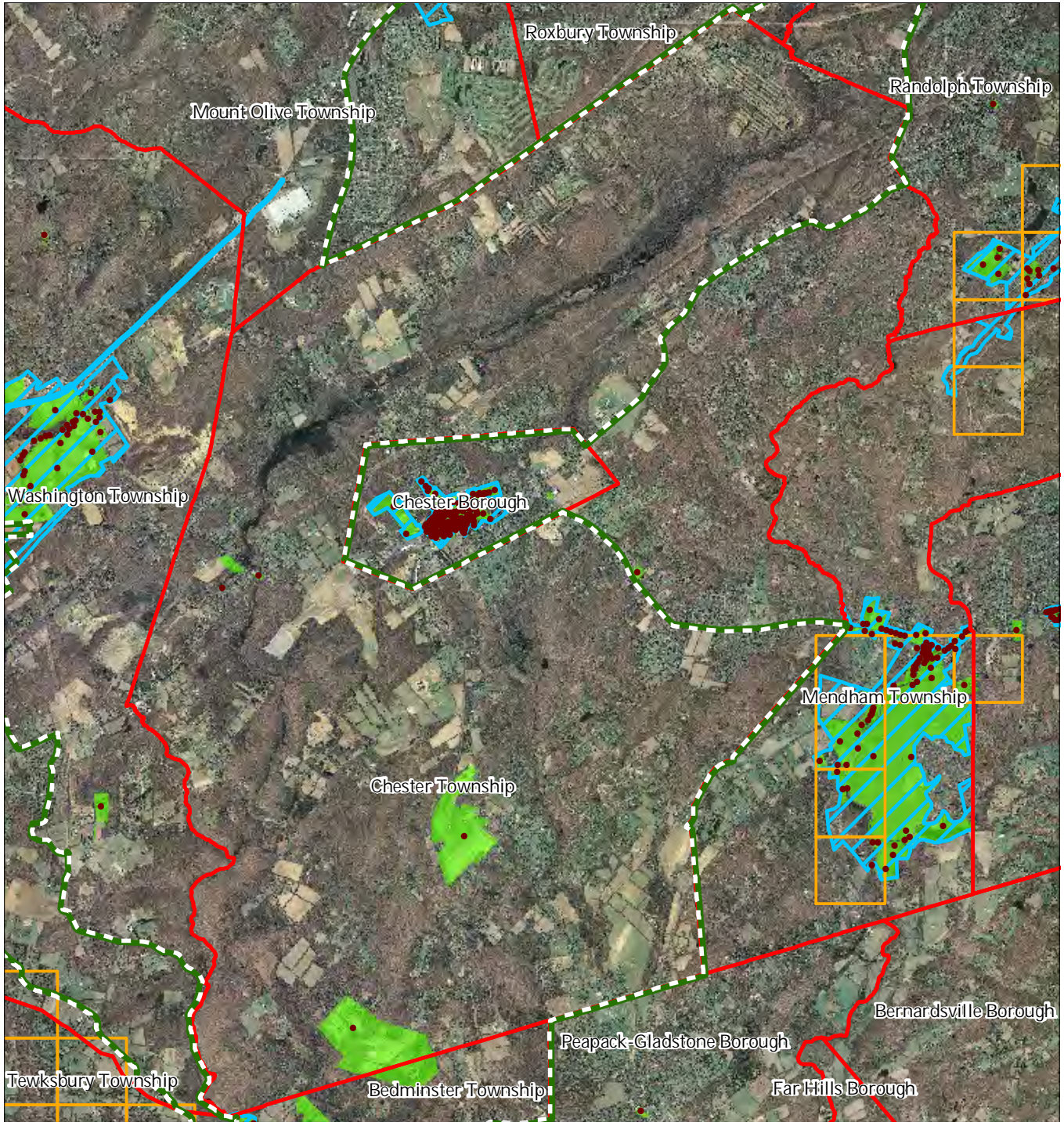
Chester Township



1 inch = 0.99 miles

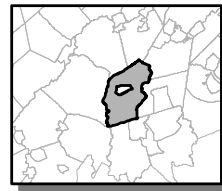


Figure 28: Historic, Cultural, and Archaeological Resources Inventory



-  Preservation Area
-  Municipal Boundaries
-  Archaeological Grids (1 sqmi)
-  NJ Historic Districts
-  Historic Property Points
-  Historic Property Polygons

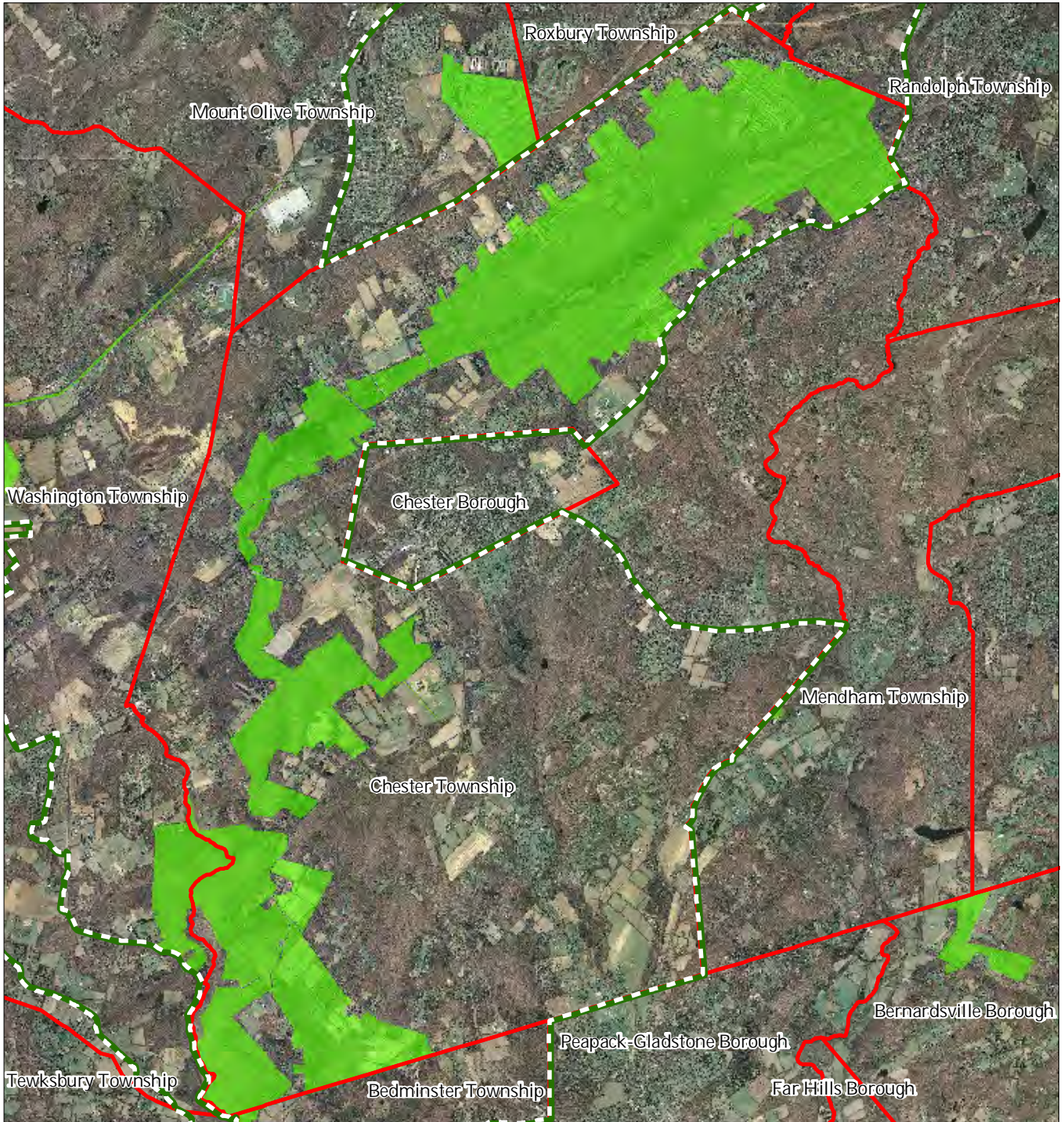
Chester Township



1 inch = 0.99 miles

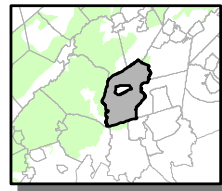
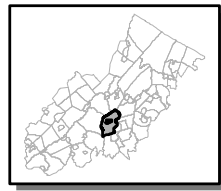


Figure 29: Baseline Scenic Resources Inventory



- Scenic Resources
- Municipal Boundaries
- Preservation Area

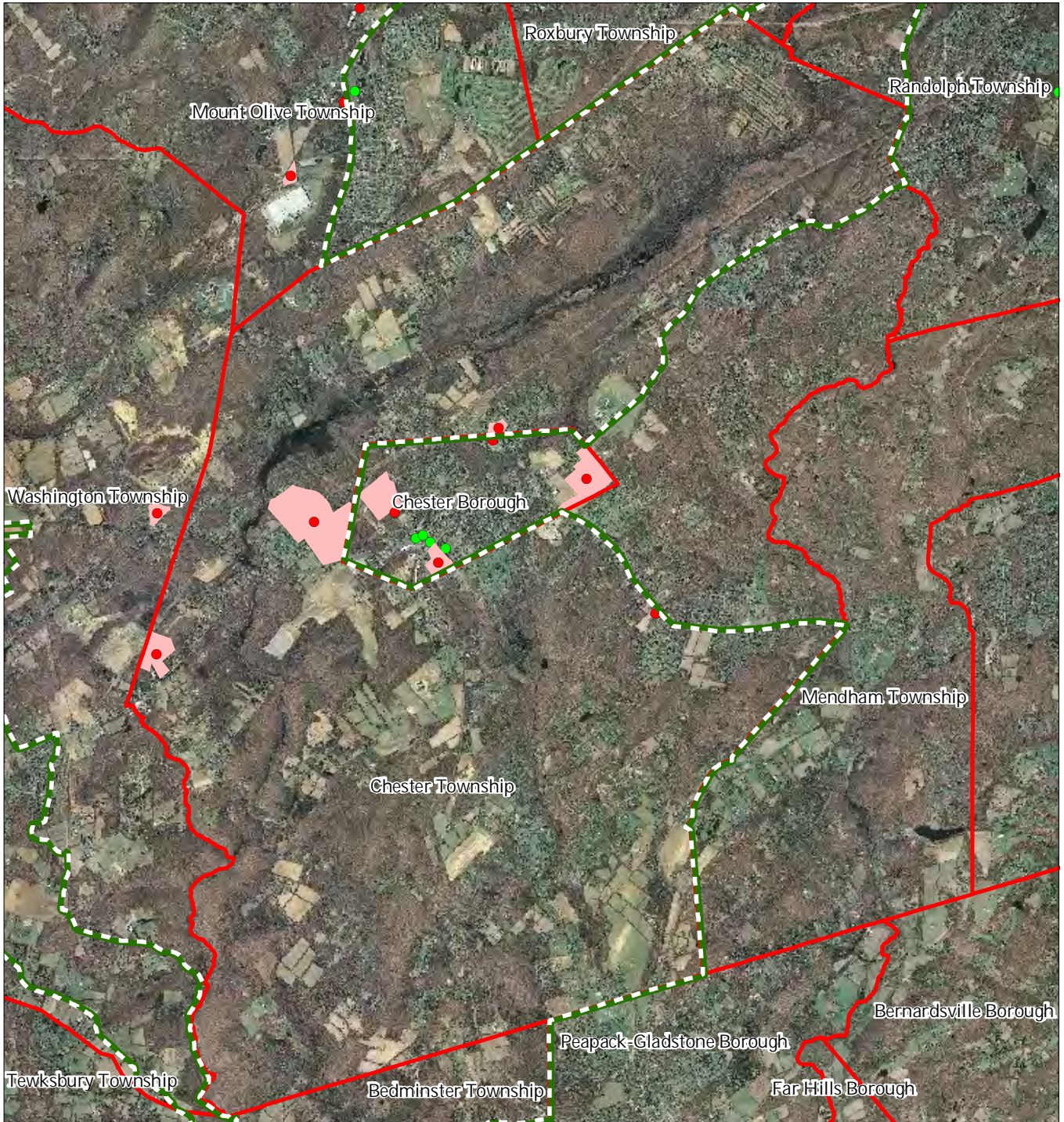
Chester Township



1 inch = 0.99 miles



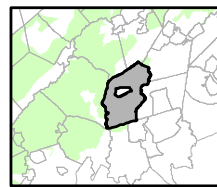
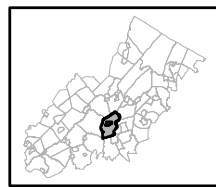
Figure 30: Highlands Contaminated Site Inventory



Highlands Contaminated Site Inventory

Chester Township

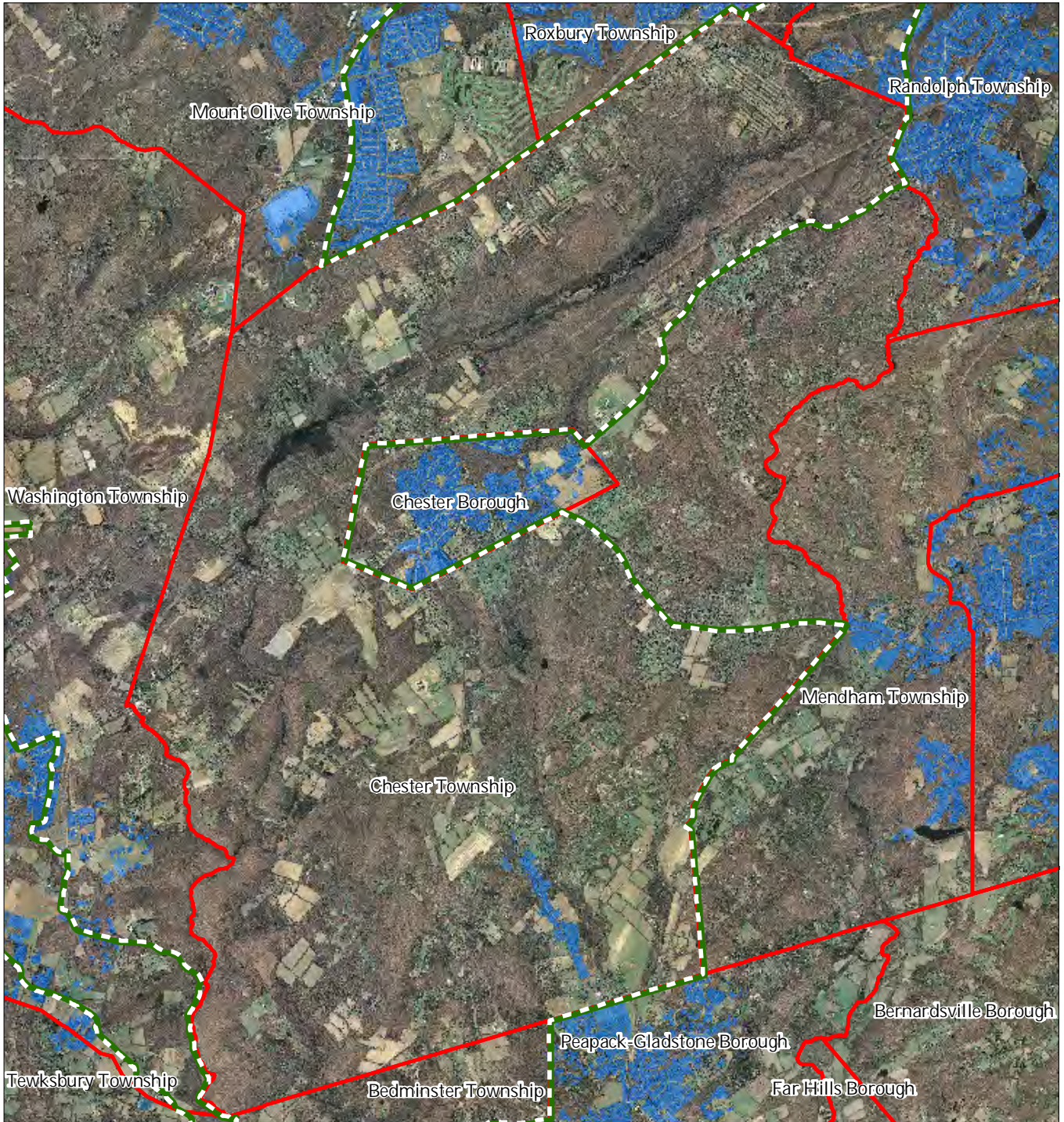
- Tier 1 Sites
- Tier 1 Sites (Polygons)
- Tier 2 Sites
- ▬ Preservation Area
- ▬ Municipal Boundaries



1 inch = 0.99 miles

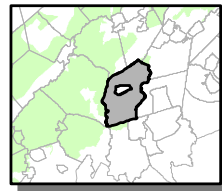


Figure 31: Public Community Water Systems



- Public Community Water Systems
- Preservation Area
- Municipal Boundaries

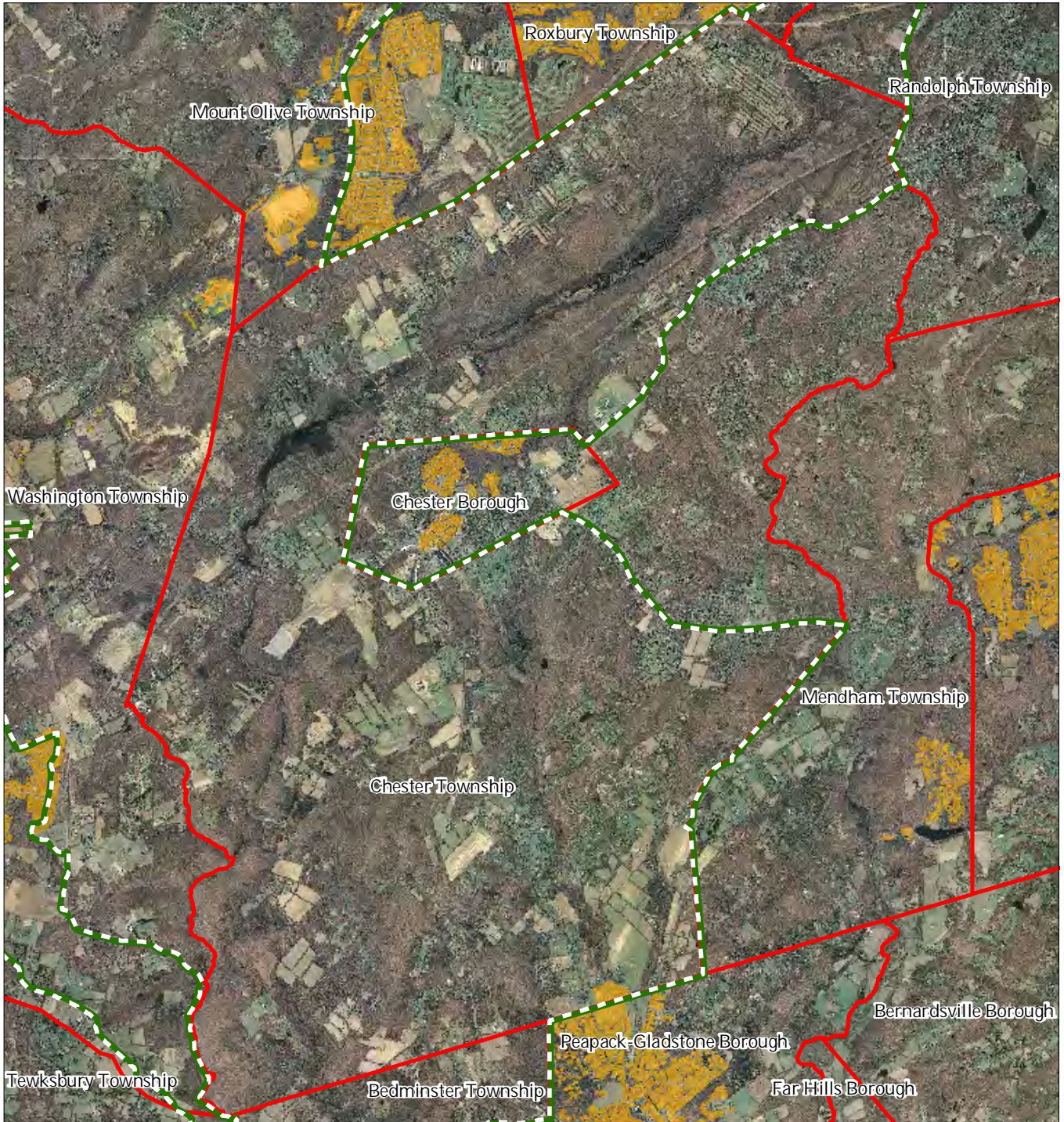
Chester Township






1 inch = 0.99 miles



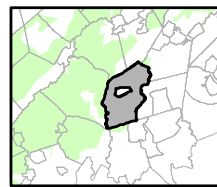
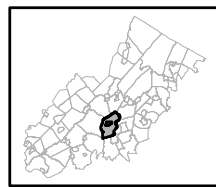
Figure 32: Highlands Domestic Sewerage Facilities



Highlands Domestic Sewerage Facilities

-  Existing Area Served
-  Preservation Area
-  Municipal Boundaries

Chester Township



1 inch = 0.99 miles



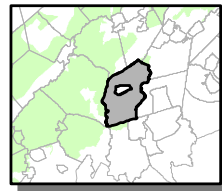
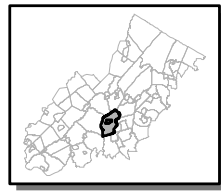
Figure 33: Highlands Roadway Network



Roadway Network

-  Interstate Highways
-  U.S. Routes
-  State Routes
-  County Routes
-  Local Routes
-  Preservation Area
-  Municipal Boundaries

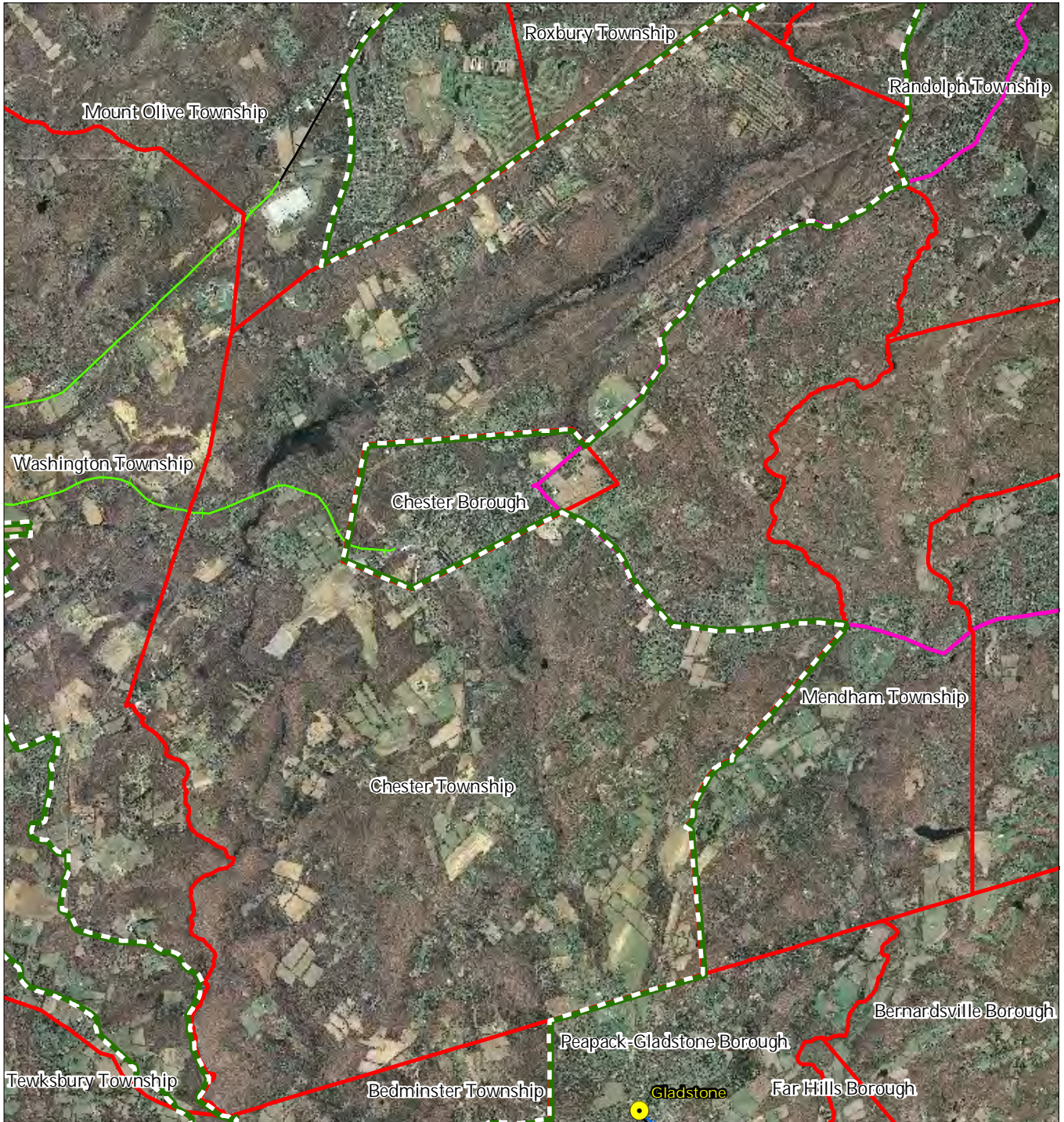
Chester Township



1 inch = 0.99 miles

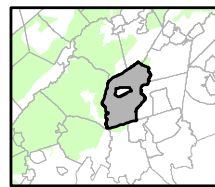
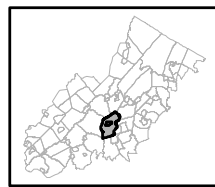


Figure 34: Highlands Transit Network



- Rail Network
- Boonton Line
 - Main Line & Bergen County Line
 - Morris and Essex Line
 - Raritan Valley Line
- Freight Rail Lines
- Freight Rail Lines
 - Abandoned Freight Rail
- Rail Stations
 - Park and Ride Sites
 - Private Bus Lines
 - NJ Transit Bus Lines
 - Airports

Chester Township



1 inch = 0.99 miles

