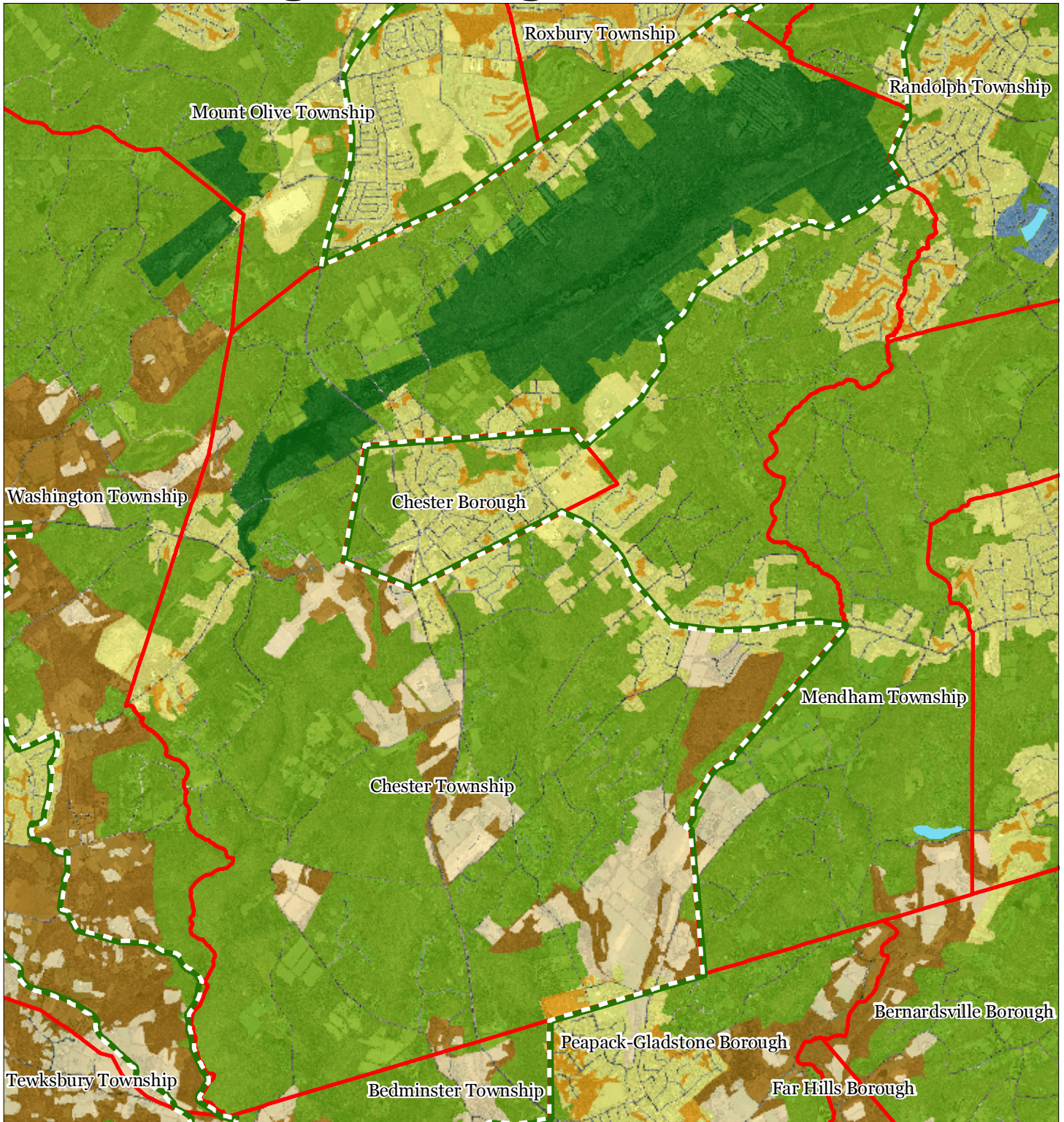


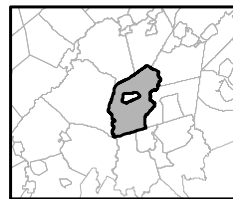
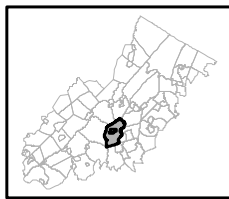
Exhibit A: Highlands Area



Regional Master Plan Overlay Zone Designation

- | | | |
|-----------------|--|-----------------------------|
| Zone | Protection | Lakes Greater Than 10 acres |
| | Conservation | Preservation Area |
| | Existing Community | Municipal Boundaries |
| Sub-Zone | Existing Community Environmentally Constrained | |
| | Conservation Environmentally Constrained | |
| | Lake Community | |
| | Wildlife Management | |

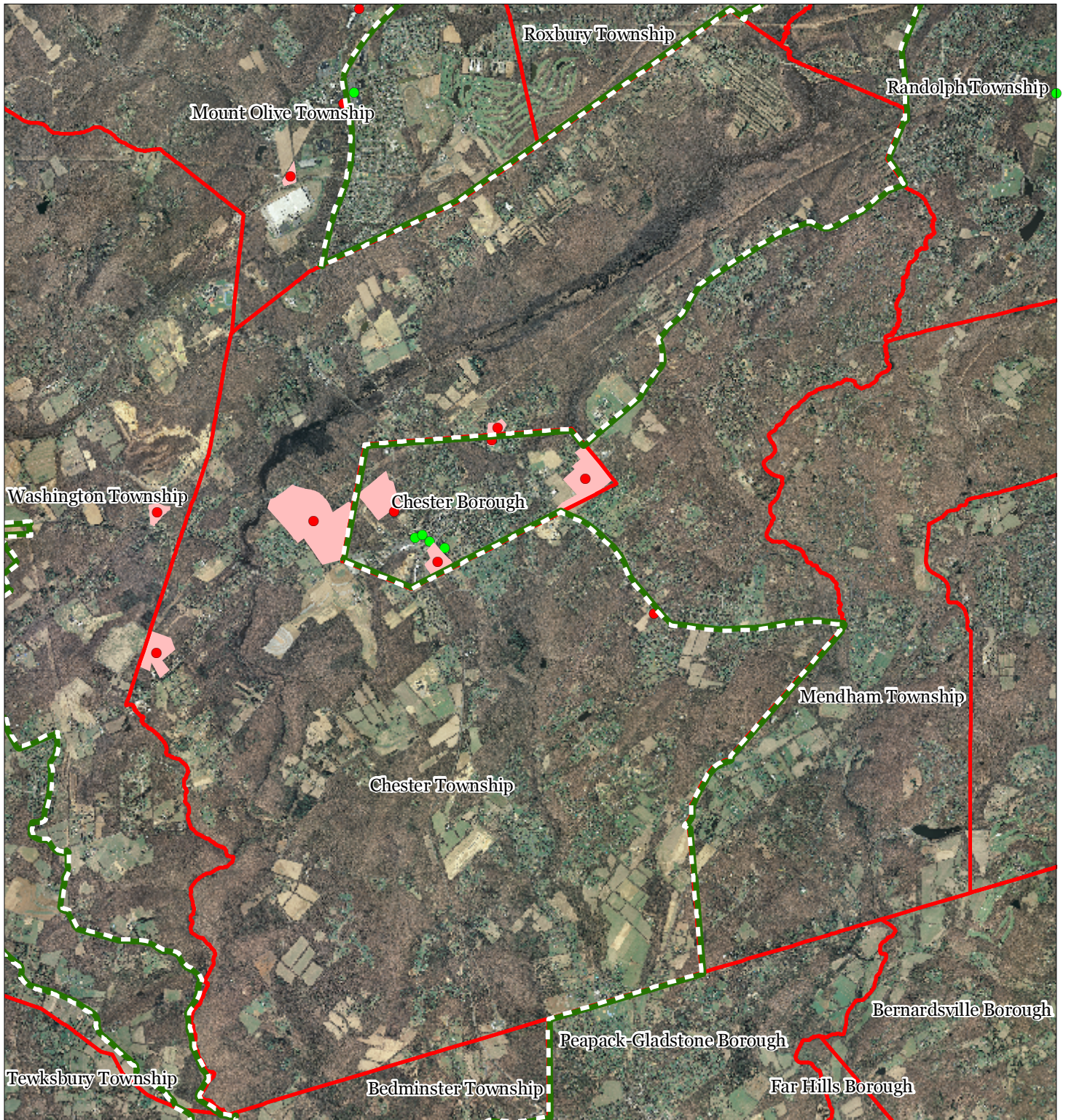
Chester Township



1 inch = 0.99 miles



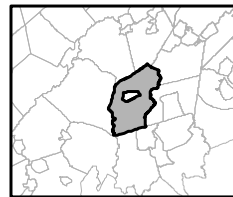
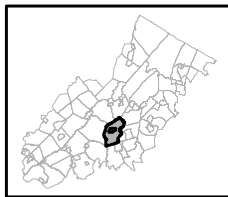
Exhibit B: Highlands Contaminated Site Inventory



Highlands Contaminated Site Inventory

Chester Township

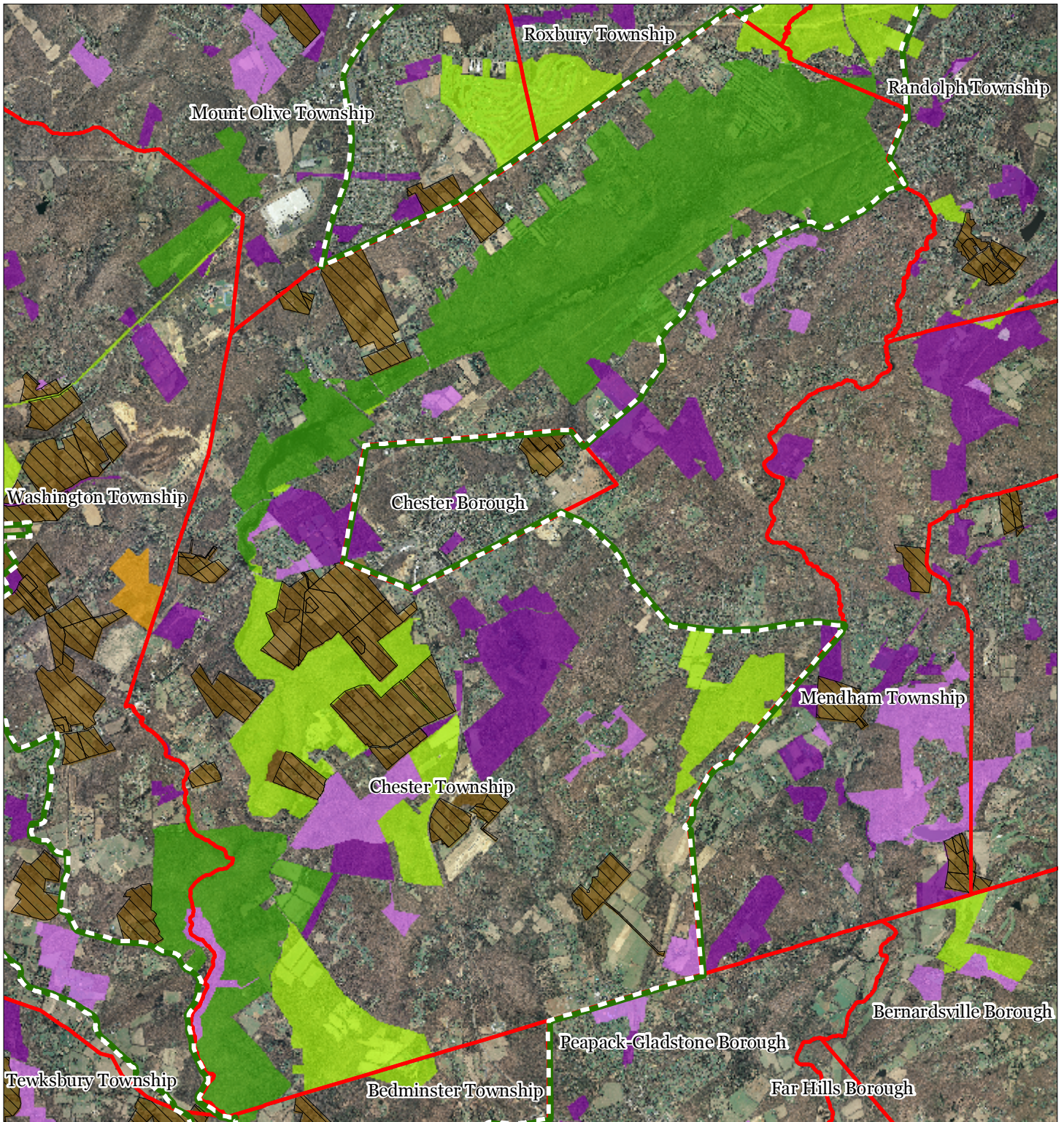
- Tier 1 Sites
- Tier 1 Sites (Polygons)
- Tier 2 Sites
- Preservation Area
- Municipal Boundaries



1 inch = 0.99 miles

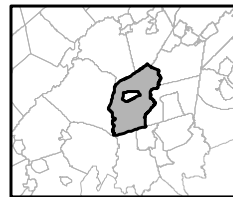
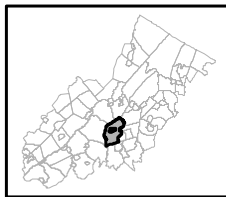


Exhibit C: Preserved Lands



- | | |
|---|-------------------------------|
| Preserved Lands | Conservation Easements |
| Federal Open Space | Green Acres |
| State Open Space | SADC Easements |
| County Open Space | SADC Final |
| Municipal Open Space | SADC Preserved |
| Non-Profit/Private Open Space | Municipal Boundaries |
| Water Supply Watershed Lands | Preservation Area |
| Preserved Farmland | |
| Highlands Transfer of Development Lands | |

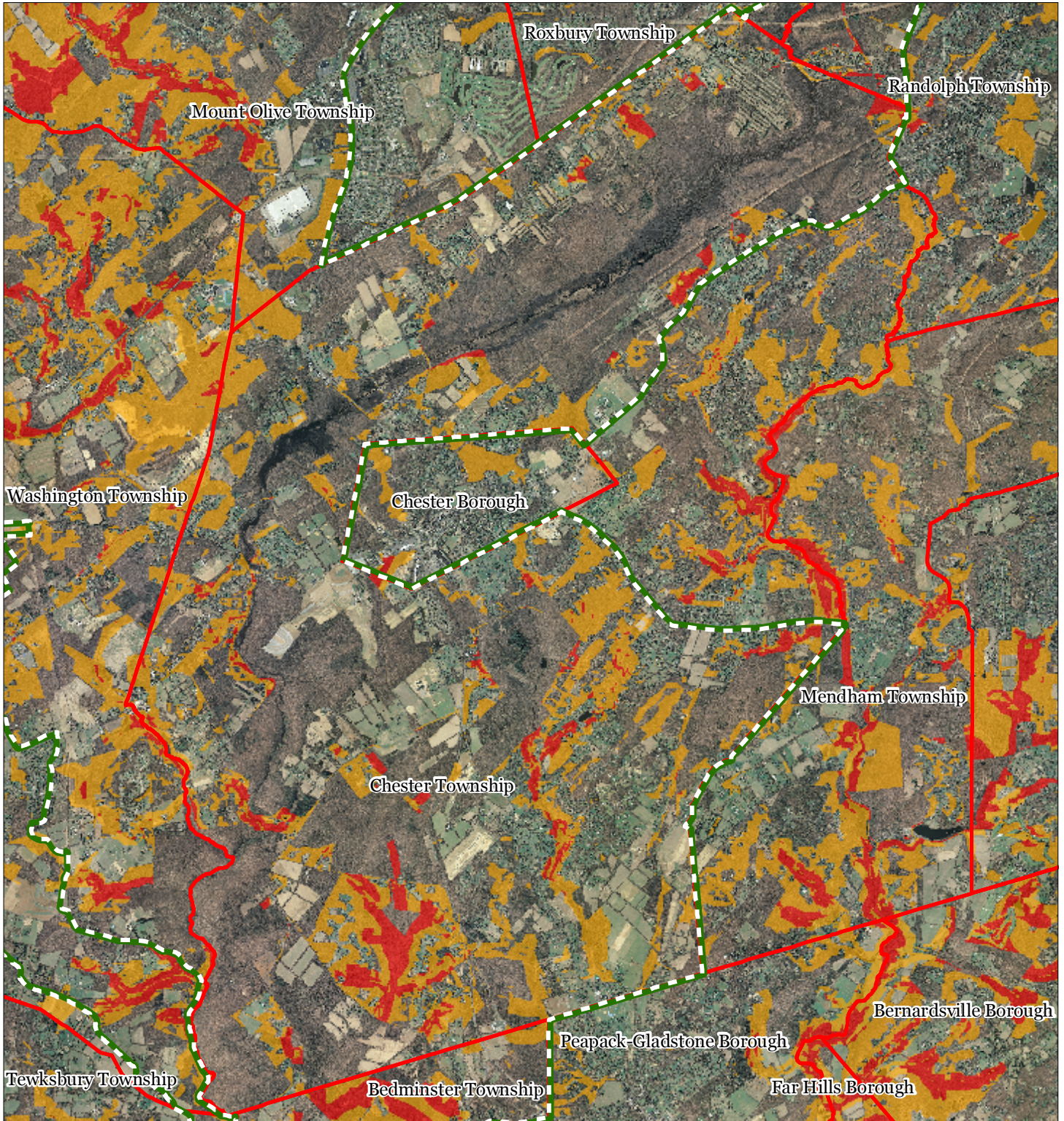
Chester Township







1 inch = 0.99 miles



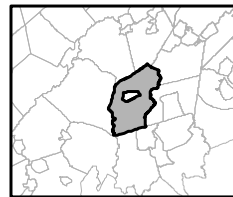
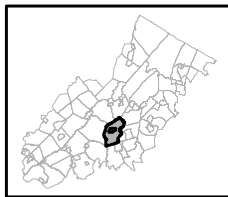
Exhibit D: Highlands Conservation Priority Areas



Conservation Priority Area

-  Moderate
-  High
-  Preservation Area
-  Municipal Boundaries

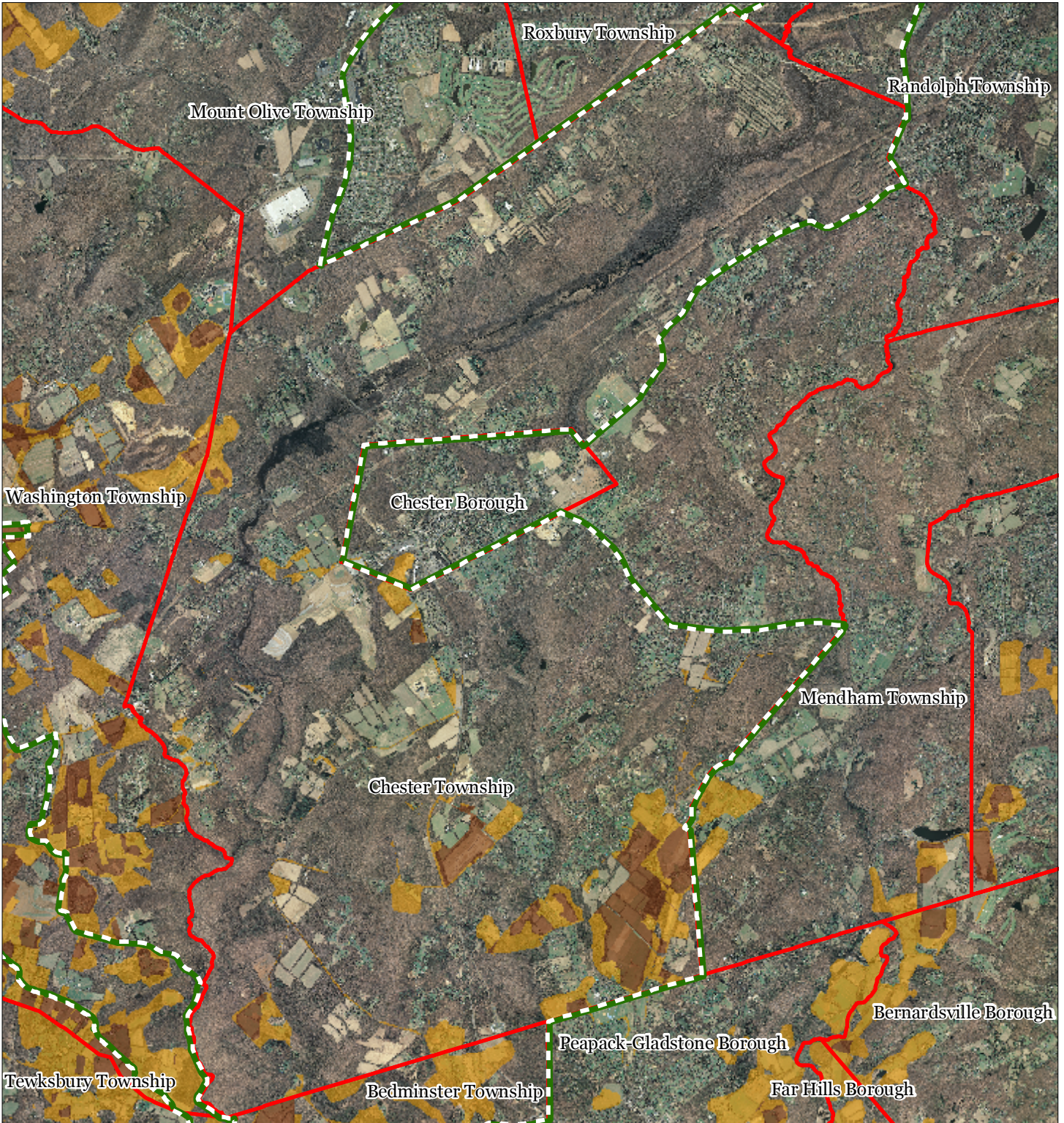
Chester Township







1 inch = 0.99 miles



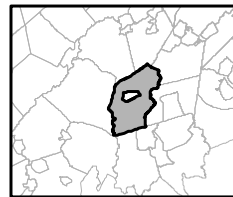
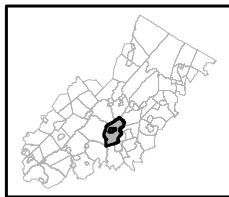
Exhibit E: Agricultural Priority Area



Agricultural Priority Area

-  Moderate
-  High
-  Preservation Area
-  Municipal Boundaries

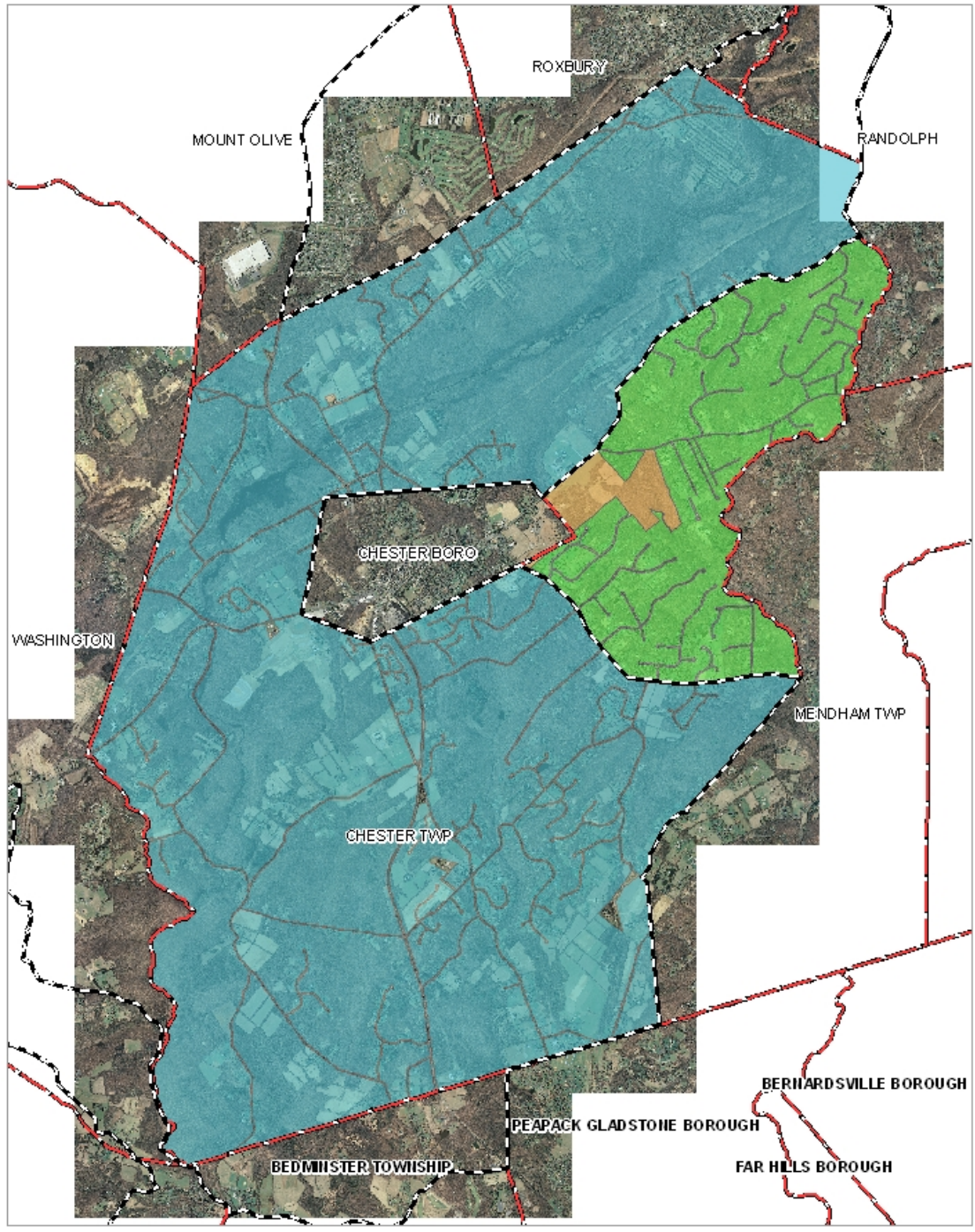
Chester Township



1 inch = 0.99 miles



EXHIBIT F. SDRP PLANNING AREAS



CHESTER TOWNSHIP

- Draft Final Plan Chester Township
- Environmentally Sensitive
 - Local Park - Cross Acceptance
 - Highlands Preservation
 - Highlands Preservation Area



1 inch = 1.01 miles
Ritter & Plante Associates, LLC
4220 Main Street
Philadelphia, PA 19127
July 9, 2009