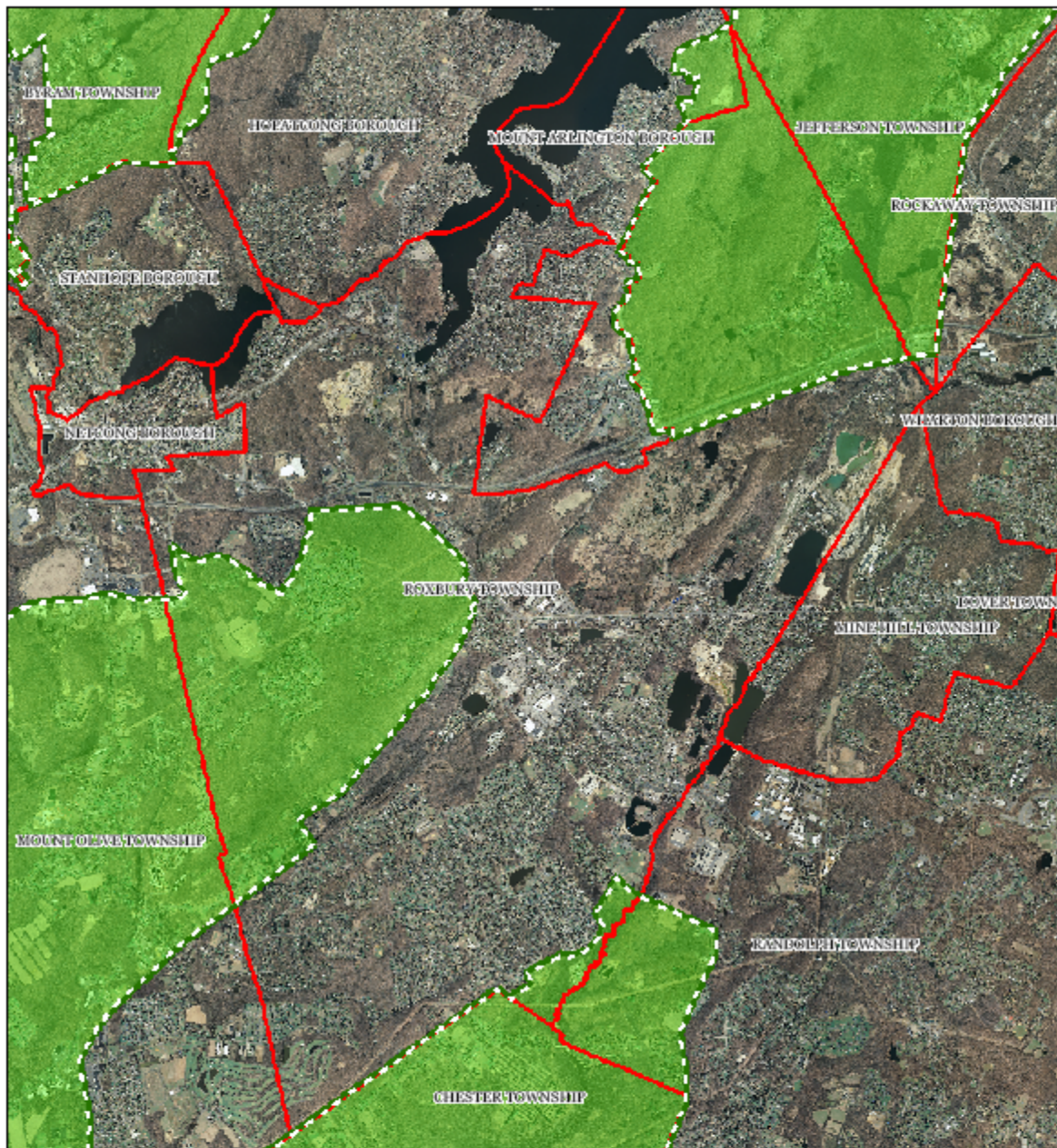


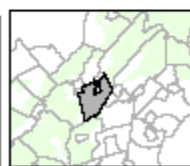
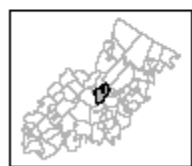


Preservation Area



-  Preservation Area
-  Municipal Boundaries

ROXBURY TOWNSHIP



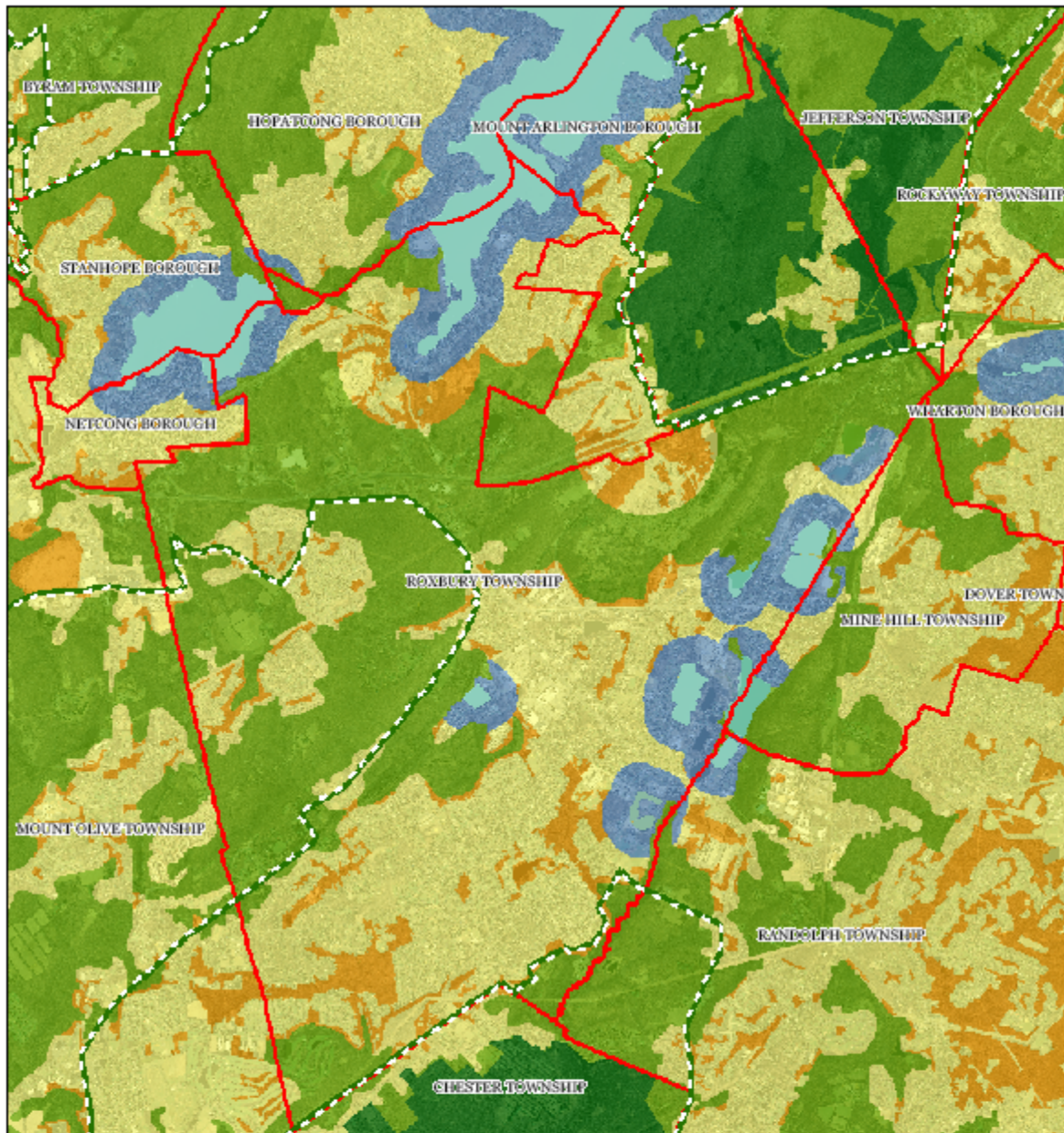
1 inch = 0.922 miles

Highlands Council
New Jersey



Reserved for Township Land Use Inventory

Land Use Capability Map Zones



Regional Master Plan Overlay Zone Designation

Zone

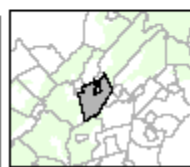
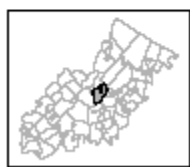
- Protection
- Conservation
- Existing Community

- Lakes Greater Than 10 acres
- Preservation Area
- Municipal Boundaries

Sub-Zone

- Existing Community Environmentally Constrained
- Conservation Environmentally Constrained
- Lake Community
- Wildlife Management

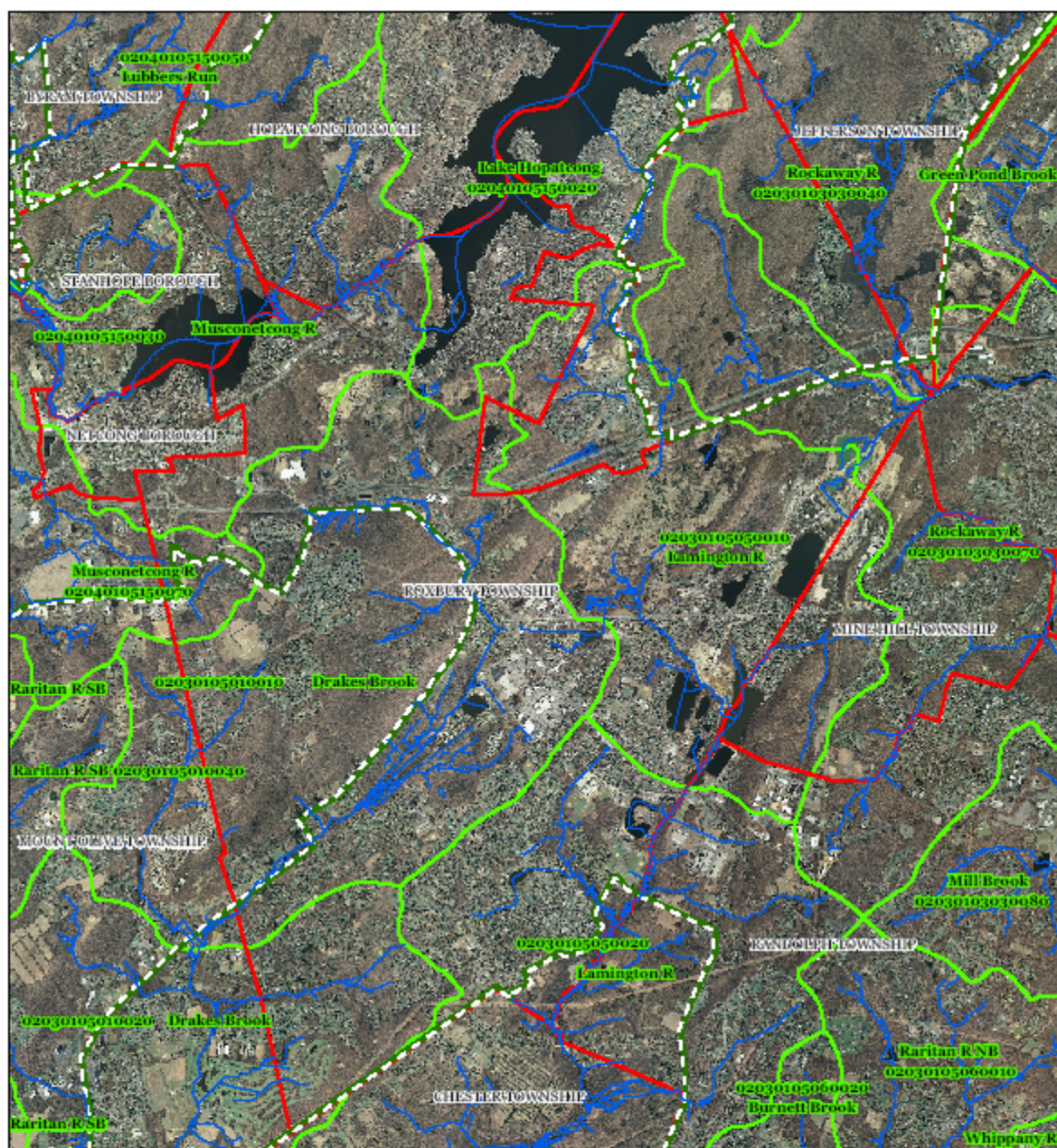
ROXBURY TOWNSHIP



1 inch = 0.922 miles




HUC 14 Boundaries

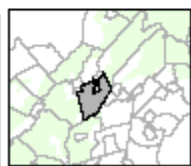


Subwatersheds: Hydrologic Unit Code 14 (HUC14)

— Stream Centerlines

 Preservation Area Municipal Boundaries

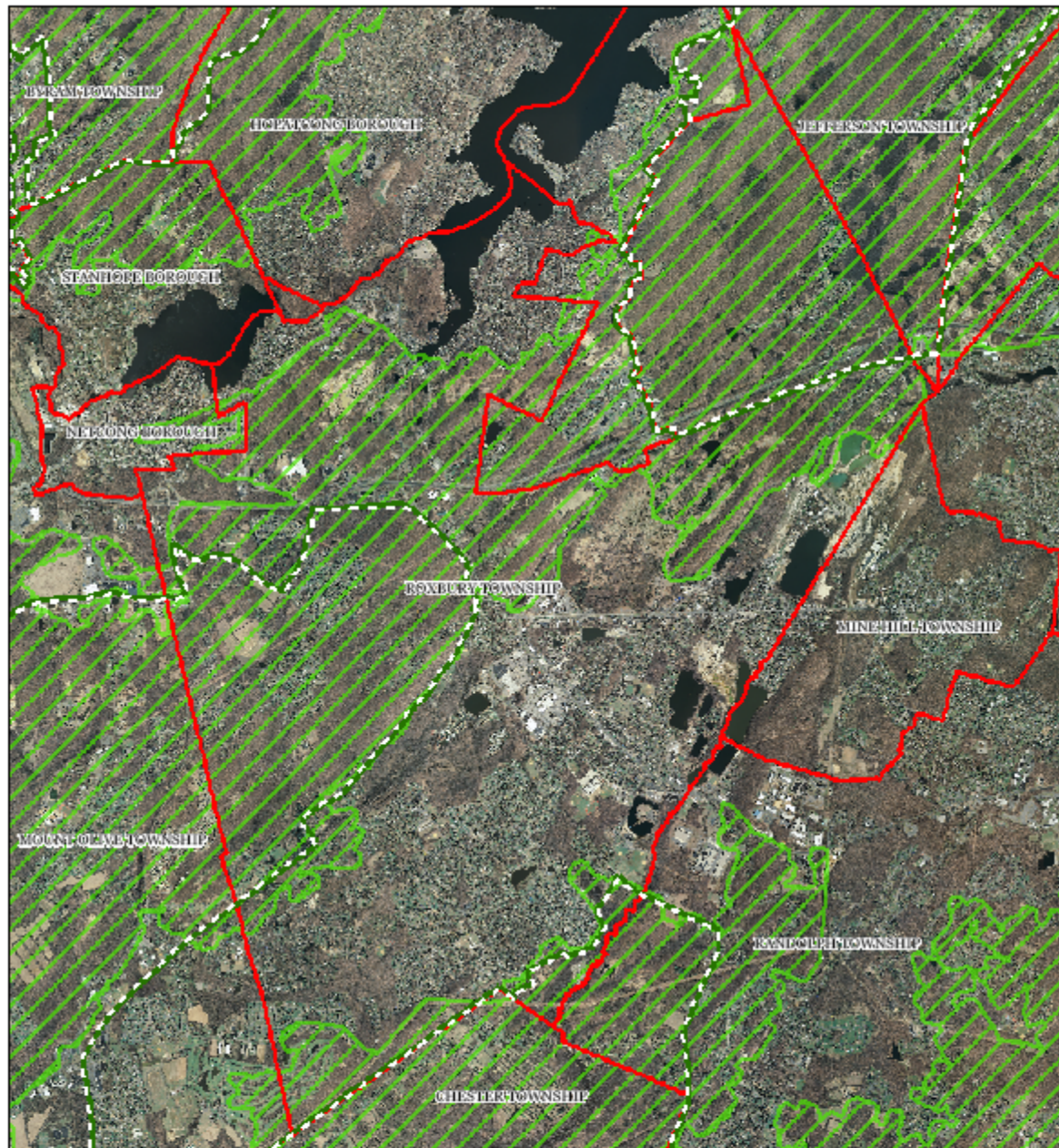
ROXBURY TOWNSHIP



1 inch = 0.922 miles

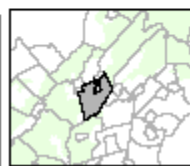


Forest Resource Area



- Forest Resource Area
- Preservation Area
- Municipal Boundaries

ROXBURY TOWNSHIP

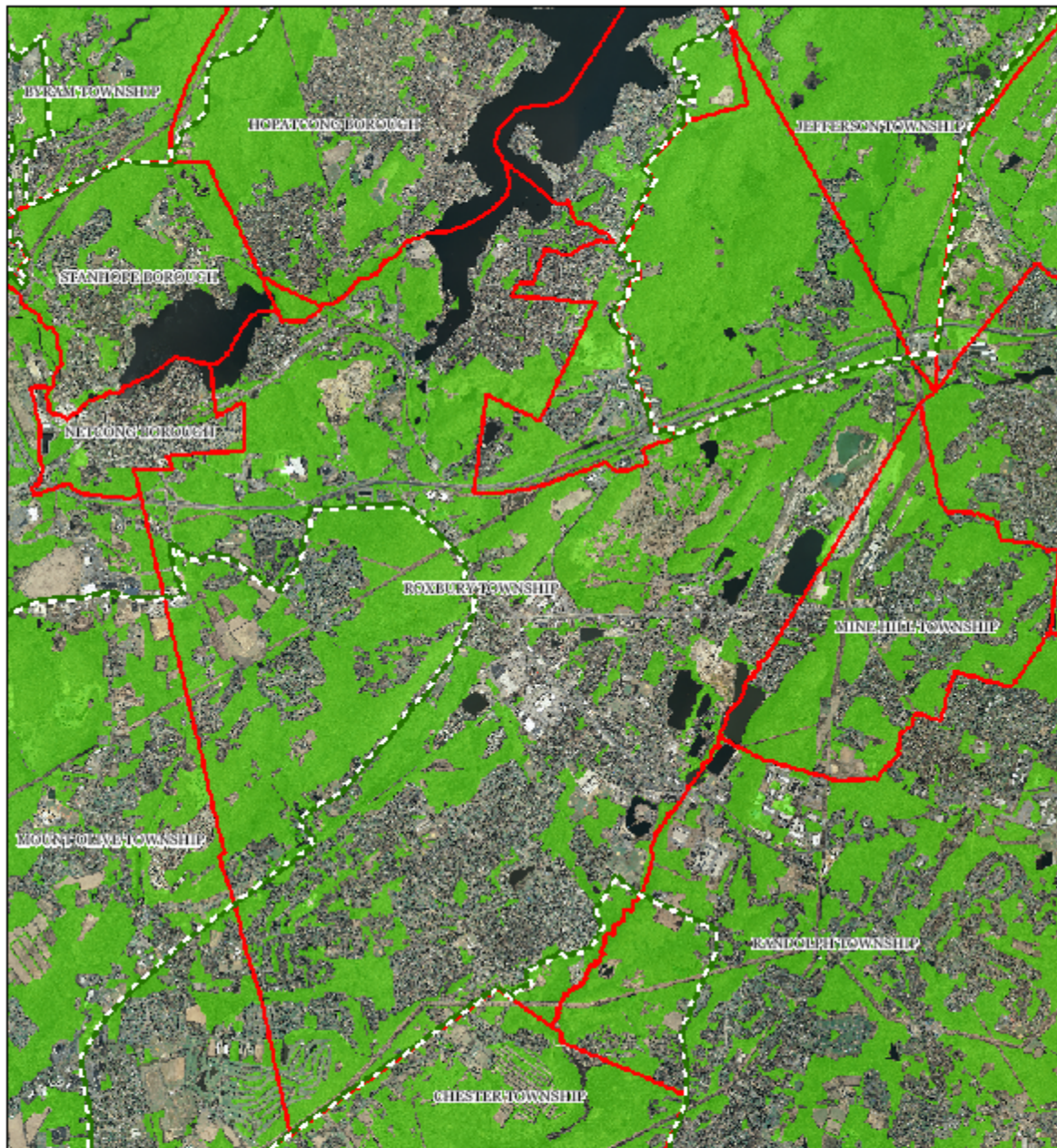





1 inch = 0.922 miles

Highlands Council
New Jersey

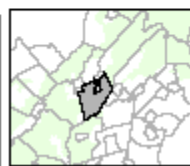


Total Forest Area



-  Forested Areas
-  Preservation Area
-  Municipal Boundaries

ROXBURY TOWNSHIP

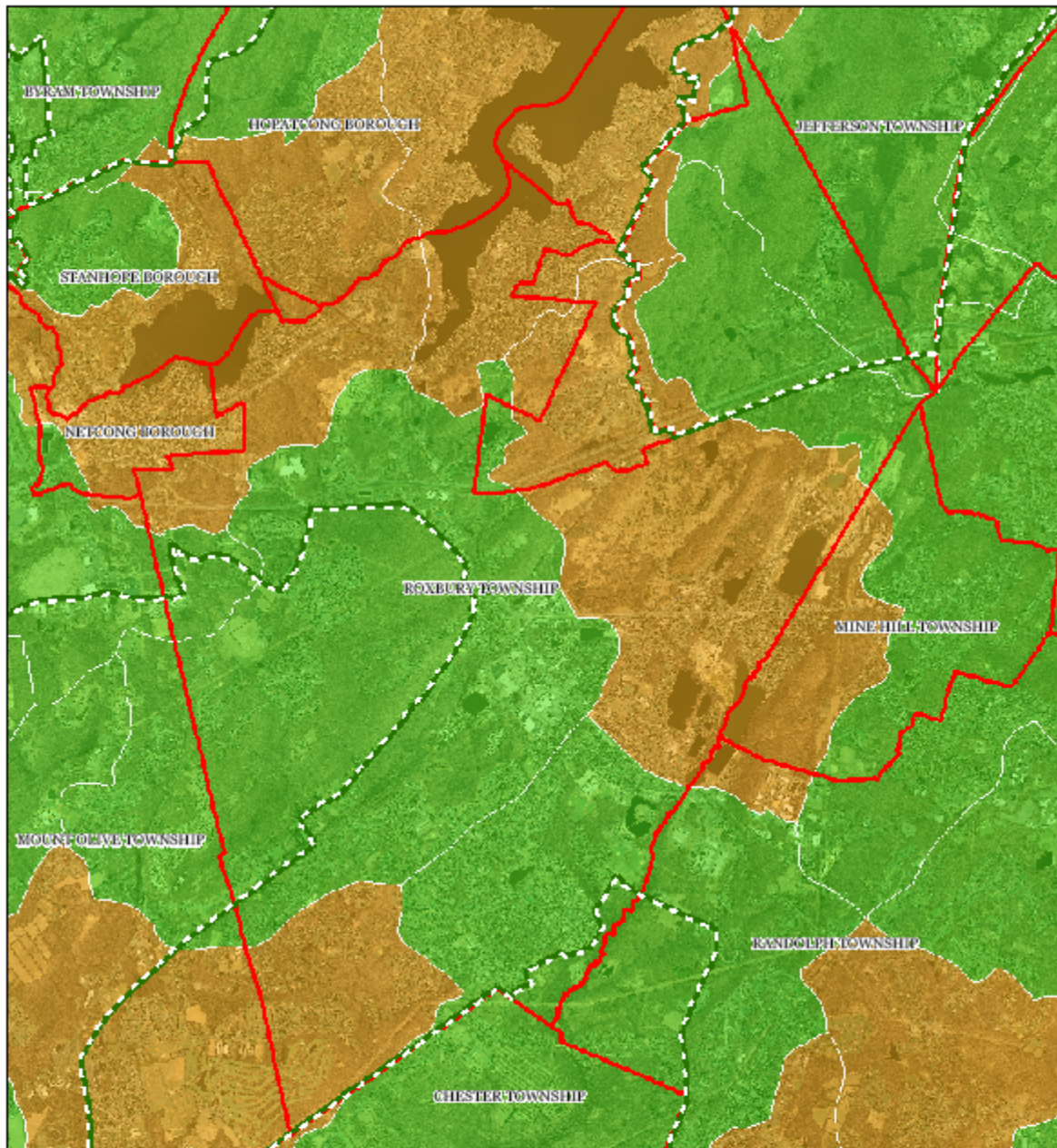


1 inch = 0.922 miles

Highlands Council
New Jersey



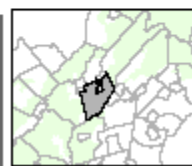
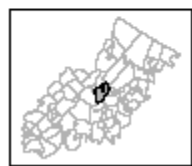
Forest Subwatersheds



Forest Integrity by HUC14 Subwatershed

- Low*
- Moderate*
- High*
- Preservation Area
- Municipal Boundaries

ROXBURY TOWNSHIP

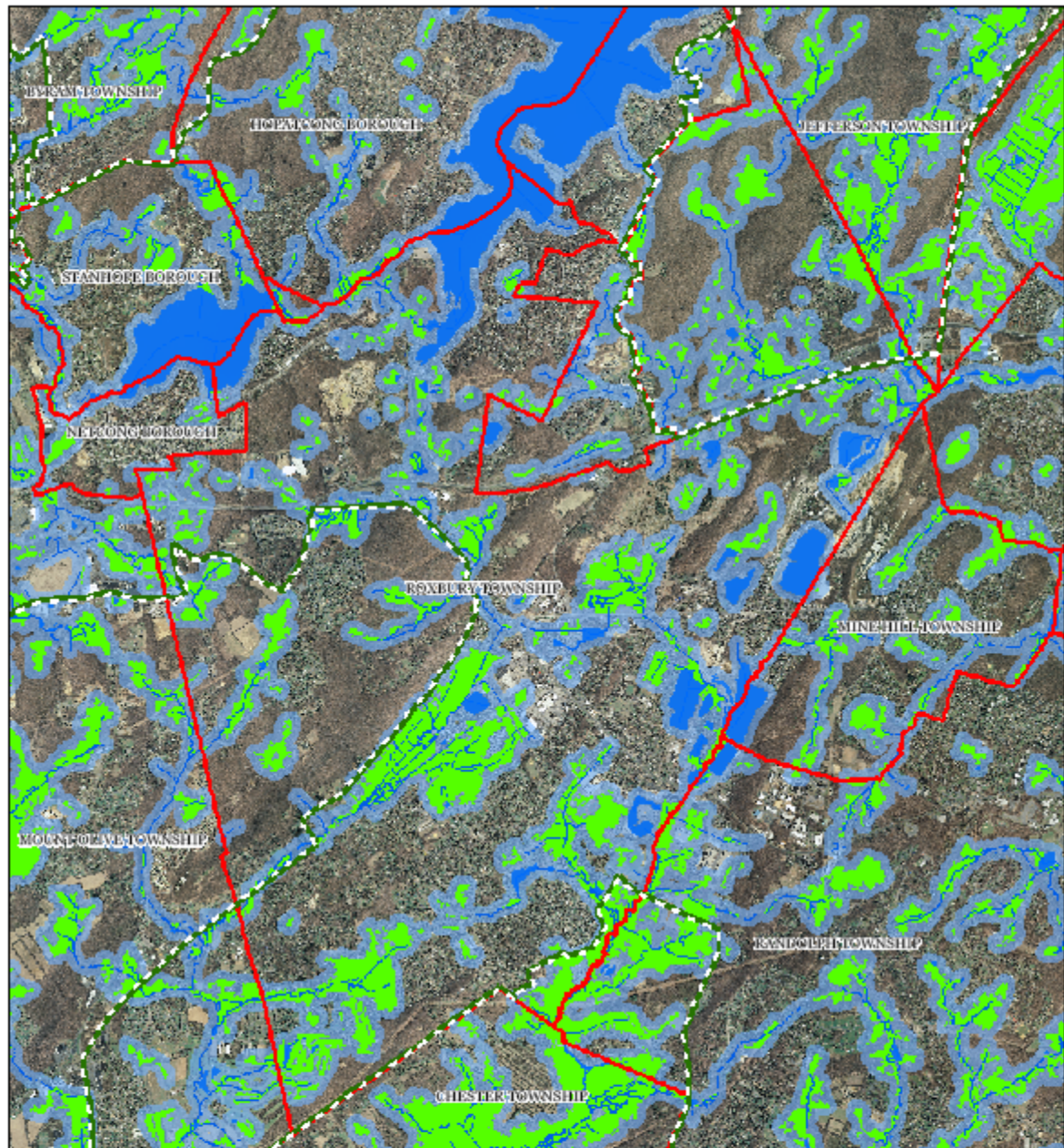


1 inch = 0.922 miles

Highlands Council
New Jersey

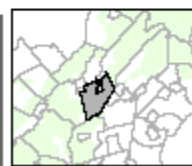
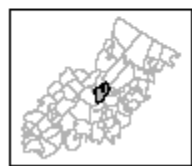


Highlands Open Waters



- Highlands Open Water Buffers (300ft)
- Streams
- Wetlands
- Lakes & Ponds
- Preservation Area
- Municipal Boundaries

ROXBURY TOWNSHIP

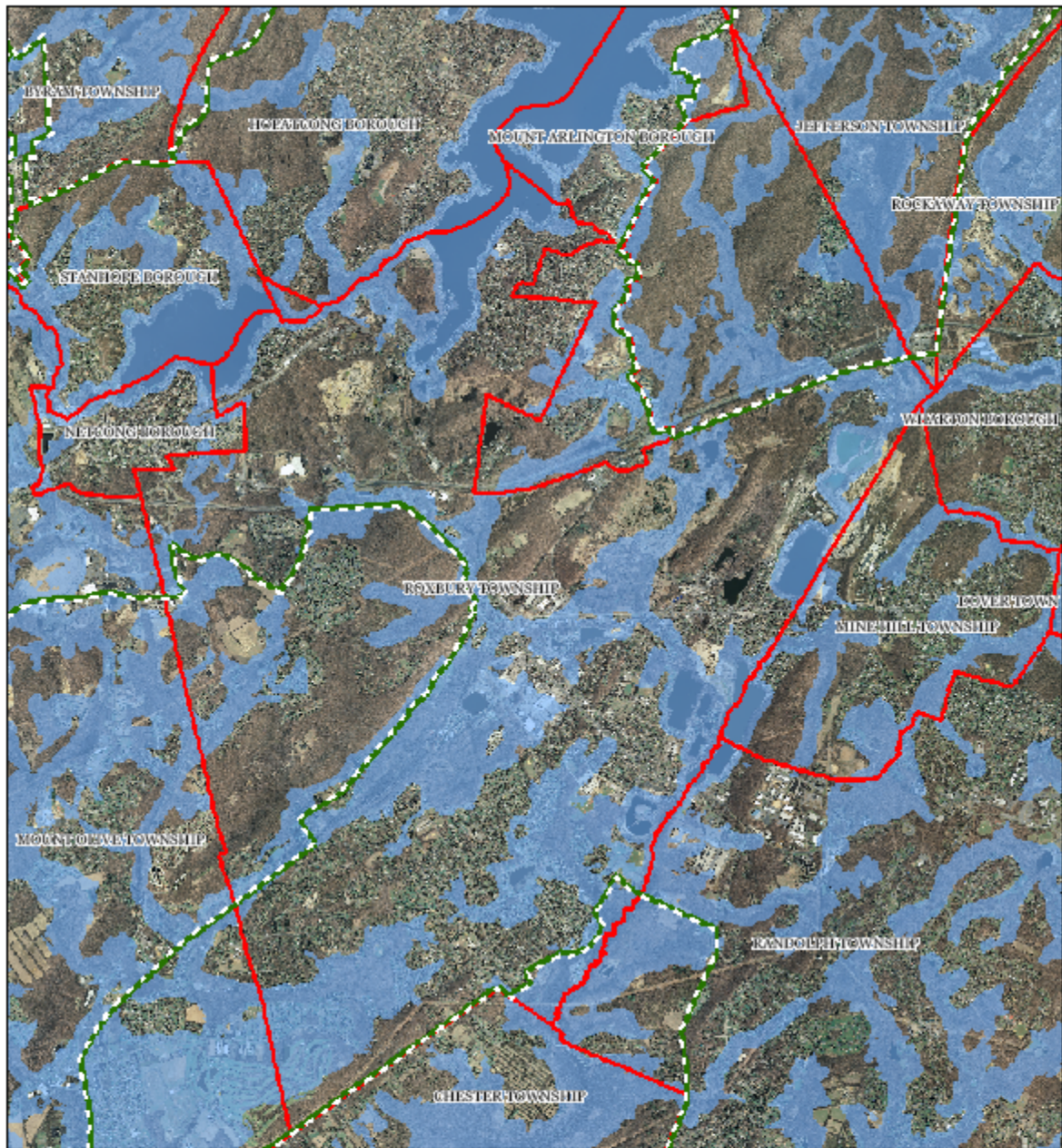



1 inch = 0.92 miles

Highlands Council
New Jersey

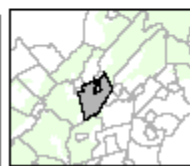


Highlands Riparian Areas



-  Riparian Area
-  Preservation Area
-  Municipal Boundaries

ROXBURY TOWNSHIP

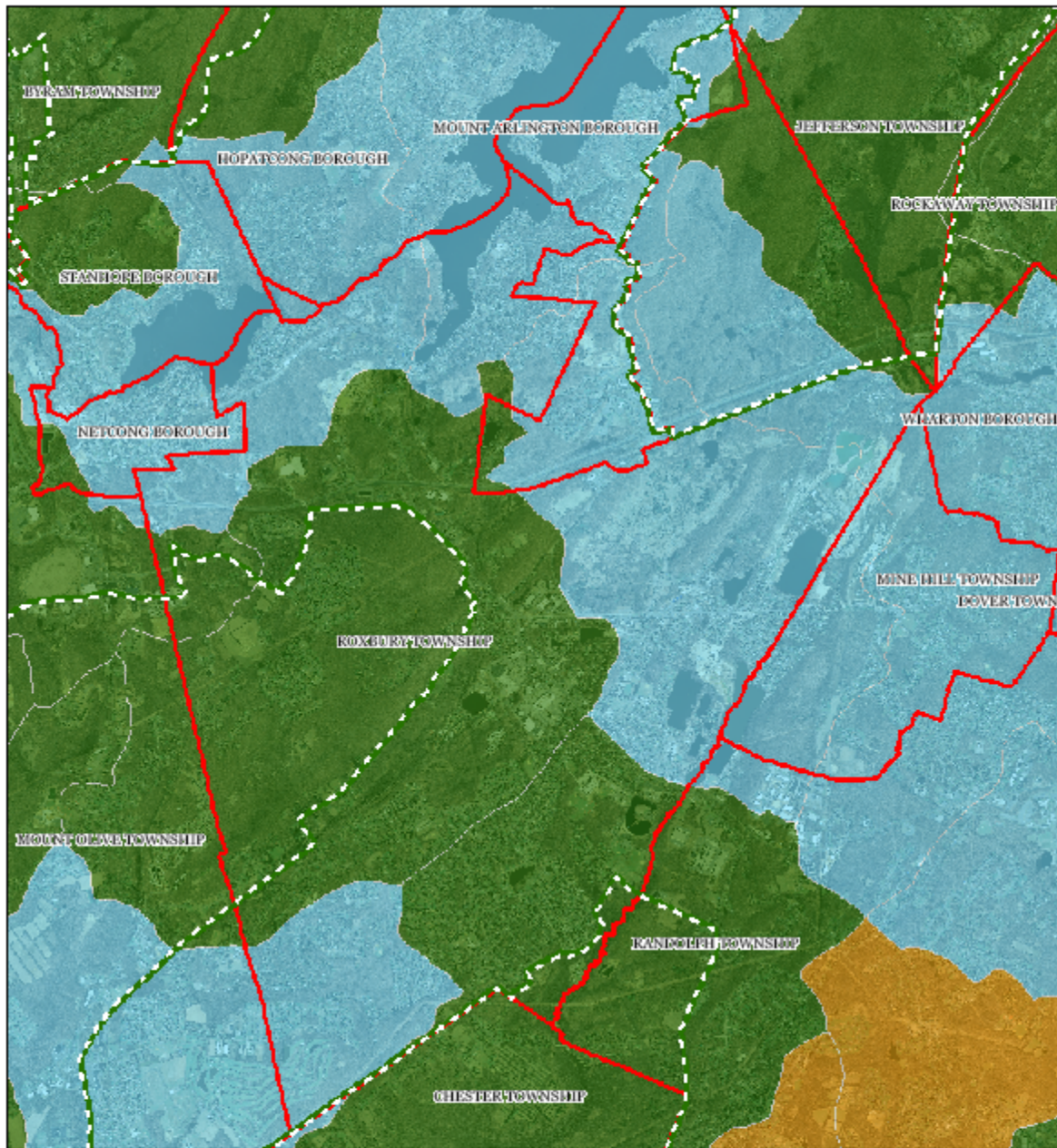


1 inch = 0.922 miles

Highlands Council
New Jersey



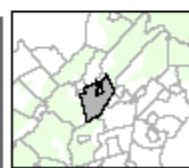
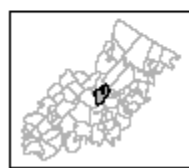
Watershed Values



Watershed Values by HUC14 Subwatershed



ROXBURY TOWNSHIP

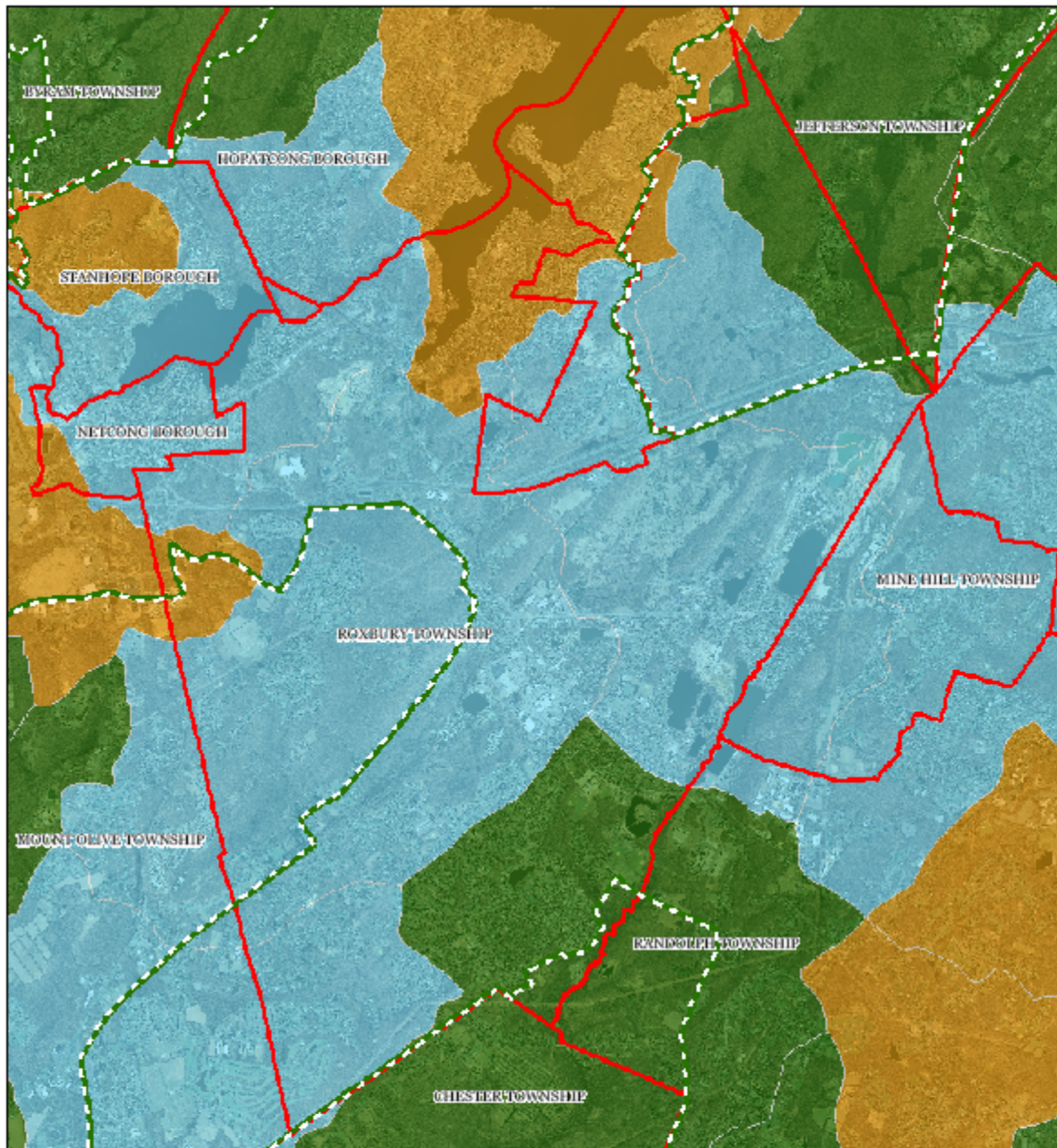


1 inch = 0.922 miles

Highlands Council
New Jersey



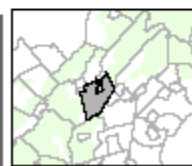
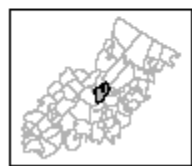
Riparian Integrity



Riparian Integrity by HUC14 Subwatershed

- Low
- Moderate
- High
- Preservation Area
- Municipal Boundaries

ROXBURY TOWNSHIP

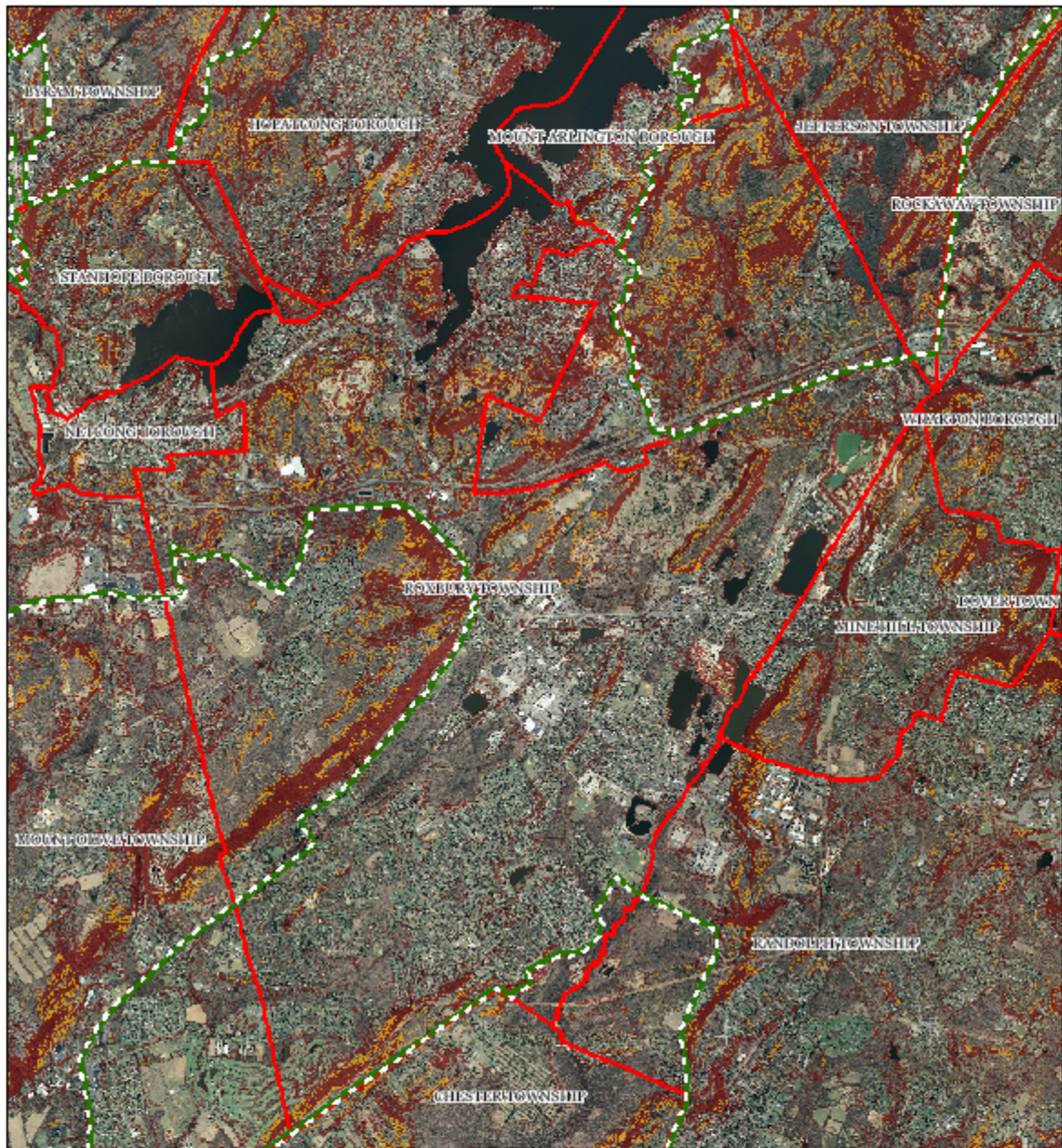


1 inch = 0.922 miles


Highlands Council
New Jersey




Steep Slope Protection Areas



Steep Slopes

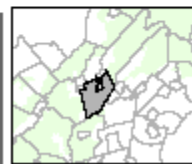
 Moderate

 Severe

 Preservation Area

 Municipal Boundaries

ROXBURY TOWNSHIP

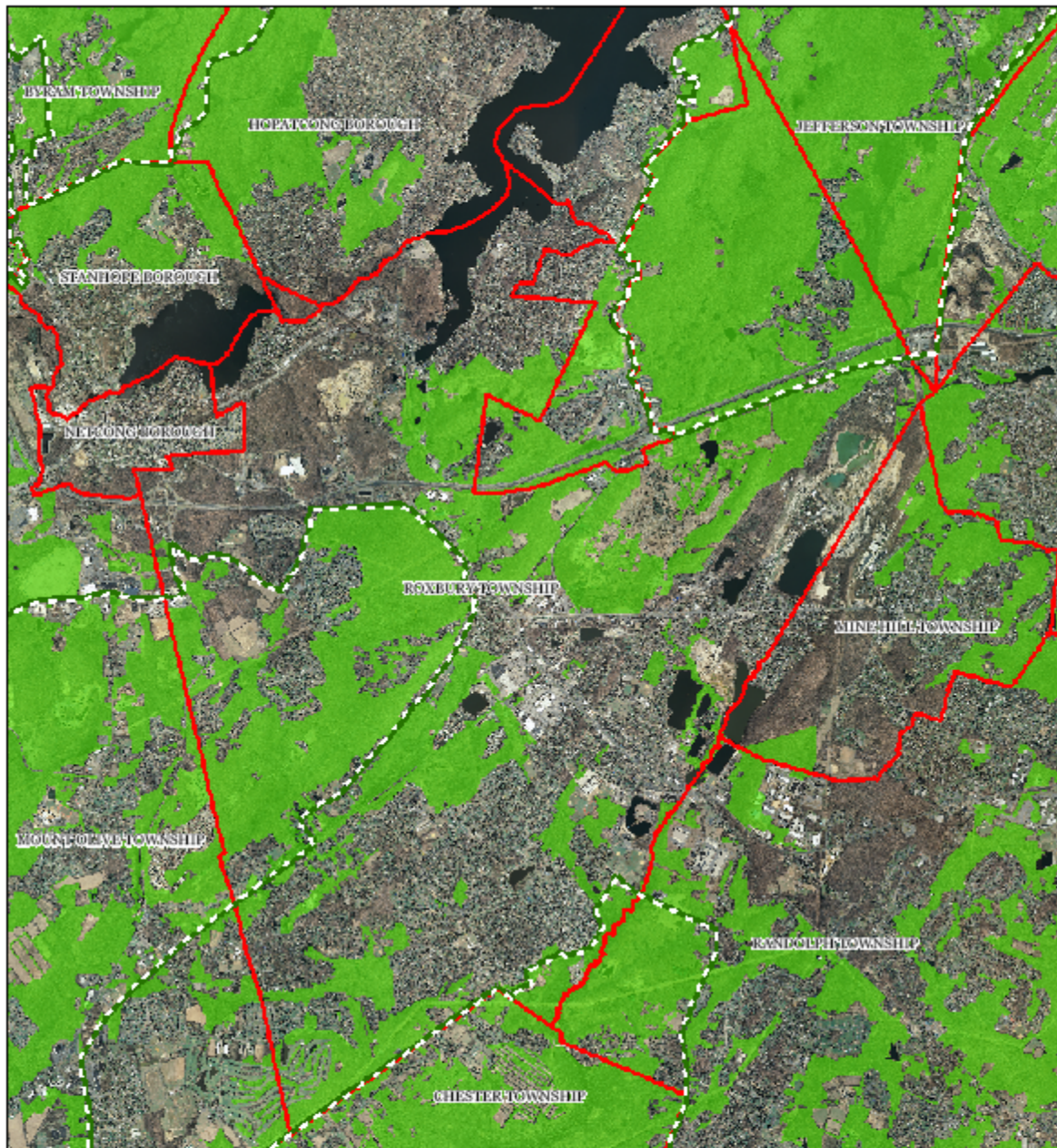





1 inch = 0.922 miles

Highlands Council
New Jersey

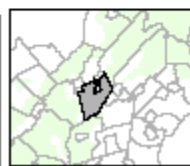
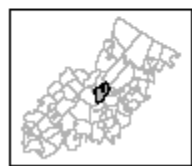


Critical Wildlife Habitat



-  Critical Wildlife Habitat
-  Preservation Area
-  Municipal Boundaries

ROXBURY TOWNSHIP

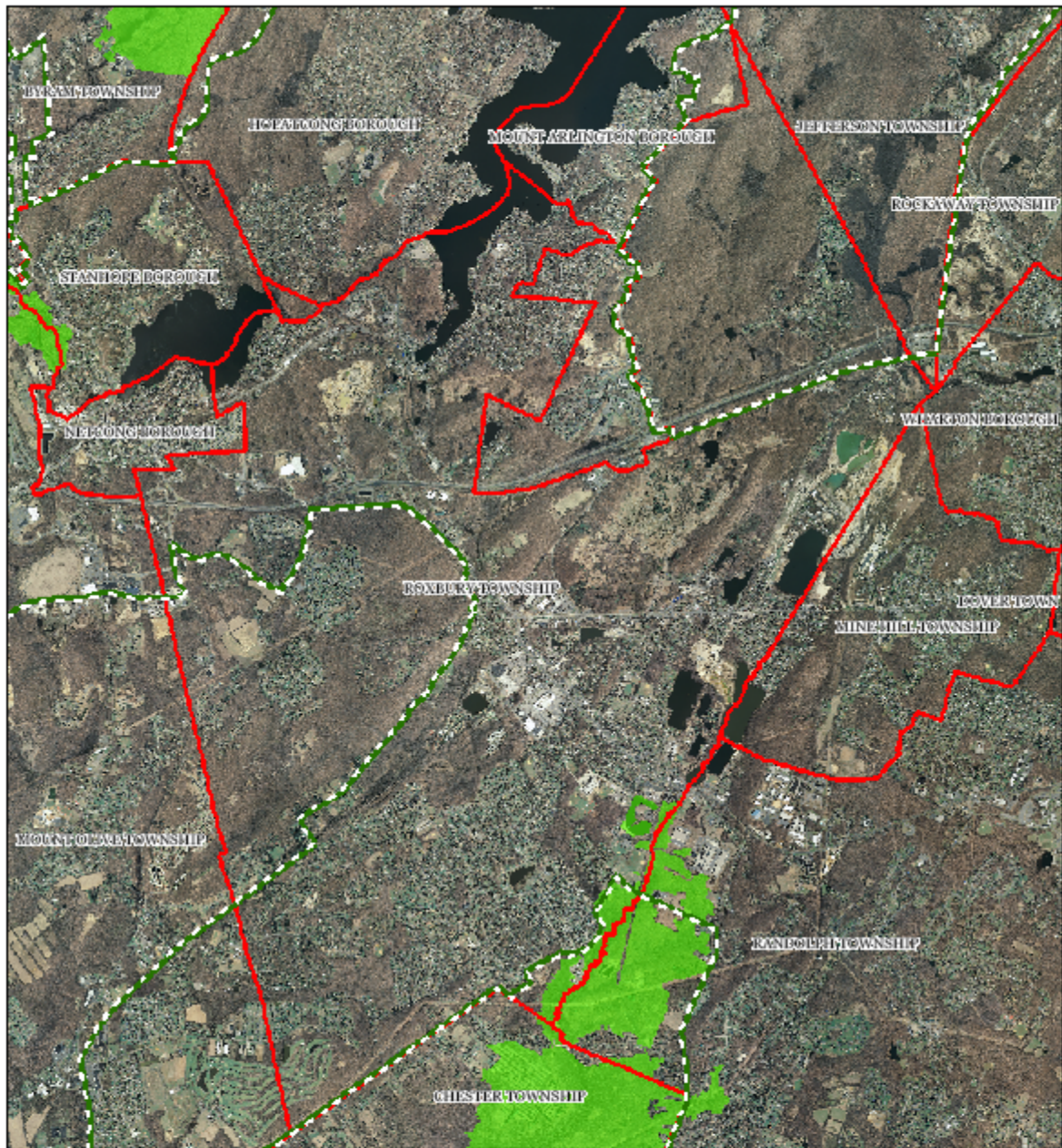





1 inch = 0.922 miles

Highlands Council
New Jersey

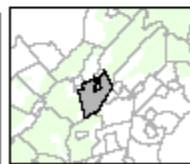


Significant Natural Areas



-  Significant Natural Areas
-  Preservation Area
-  Municipal Boundaries

ROXBURY TOWNSHIP

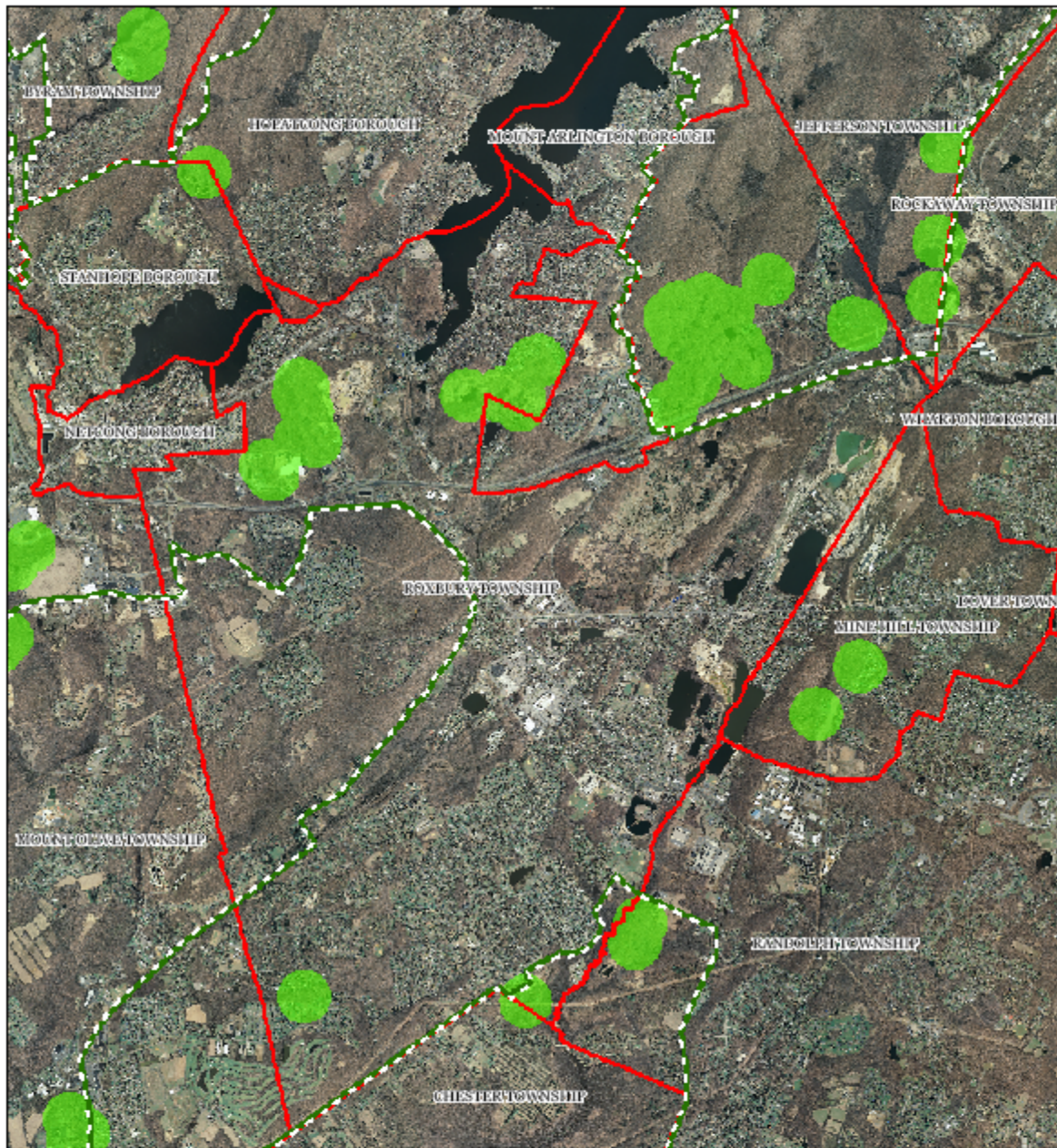


1 inch = 0.922 miles

Highlands Council
New Jersey

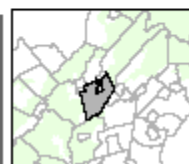
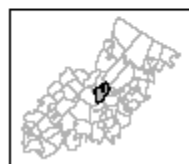
N

Vernal Pools



- Vernal Pools + 1000ft Buffer
- Preservation Area
- Municipal Boundaries

ROXBURY TOWNSHIP

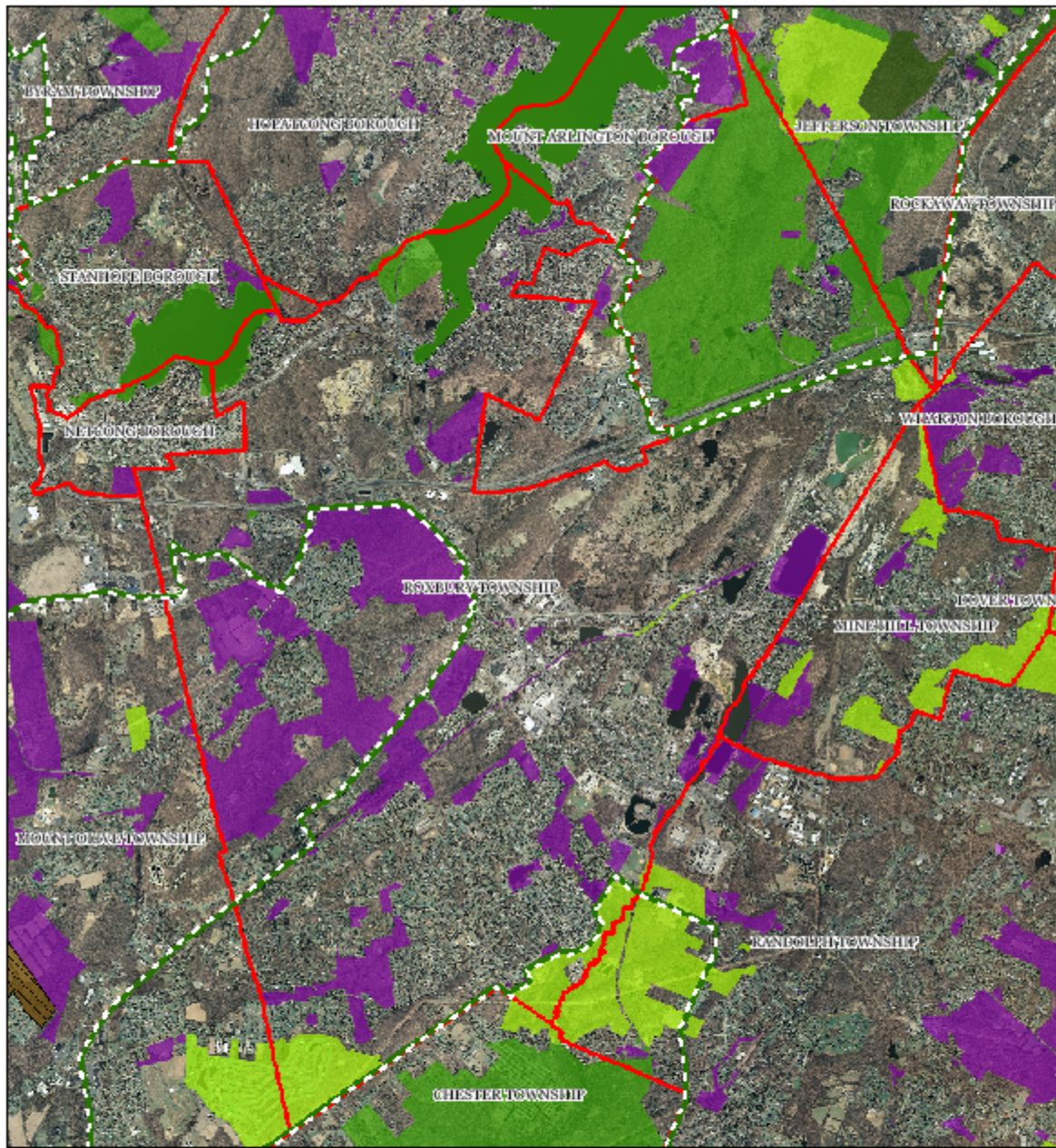


1 inch = 0.922 miles

Highlands Council
New Jersey

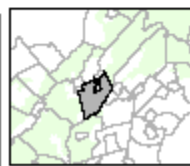
N

Preserved Lands (includes: Preserved farmlands, Federal, State, County, Municipal, Non-profit & Authorities, and Conservation easements)



Conservation Easements	Preserved Lands
Green Acres	Federal Open Space
SADC Easements	State Open Space
SADC Final	County Open Space
SADC 8 Year	Municipal Open Space
SADC Preserved	Non-Profit/Private Open Space
Municipal Boundaries	Water Supply Watershed Lands
Preservation Area	Preserved Farmland

ROXBURY TOWNSHIP

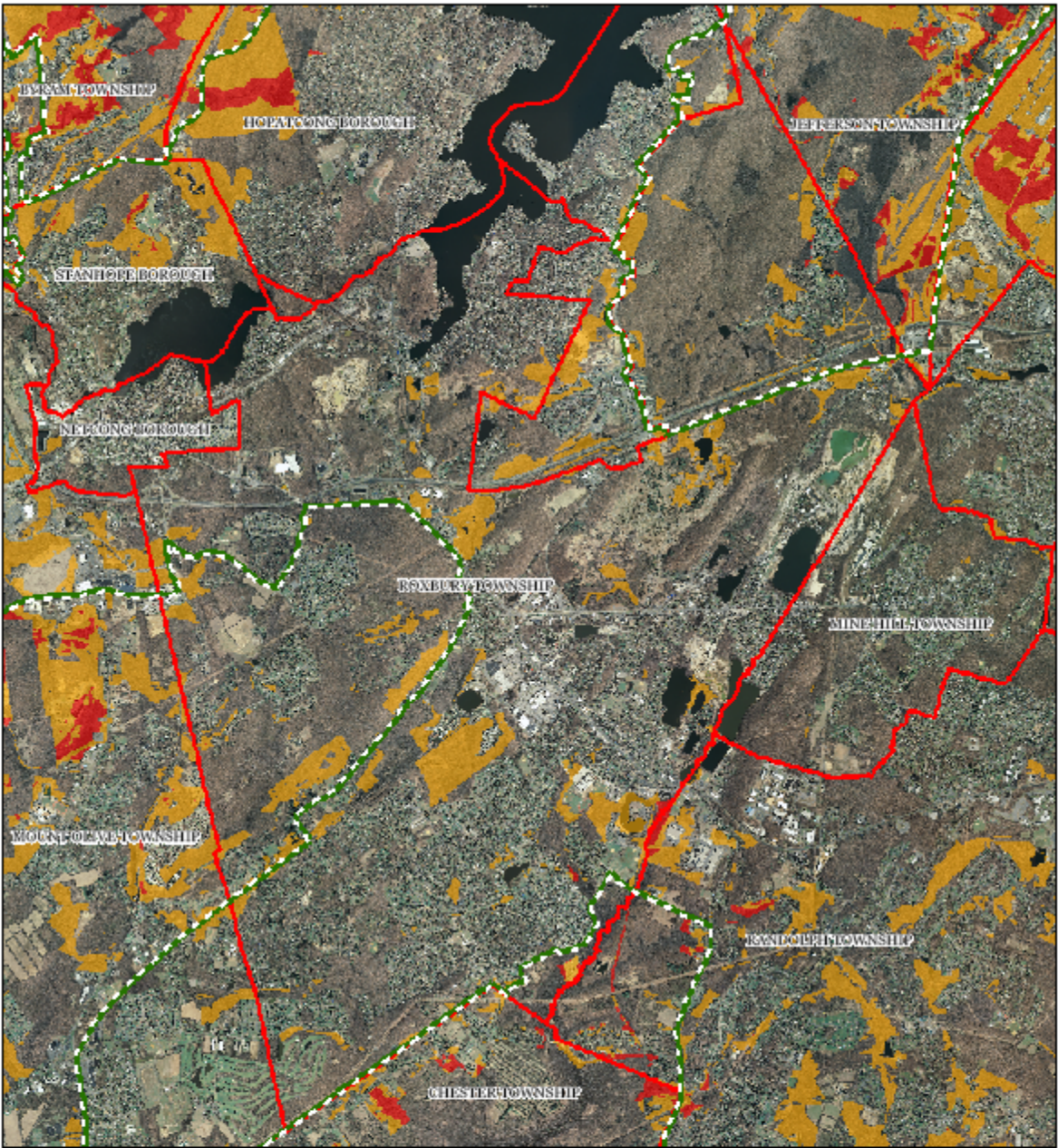


1 inch = 0.922 miles

Highlands Council
New Jersey



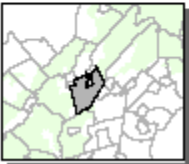
Highlands Conservation Priority Areas



Conservation Priority Area

- Moderate
- High
- Preservation Area
- Municipal Boundaries

ROXBURY TOWNSHIP

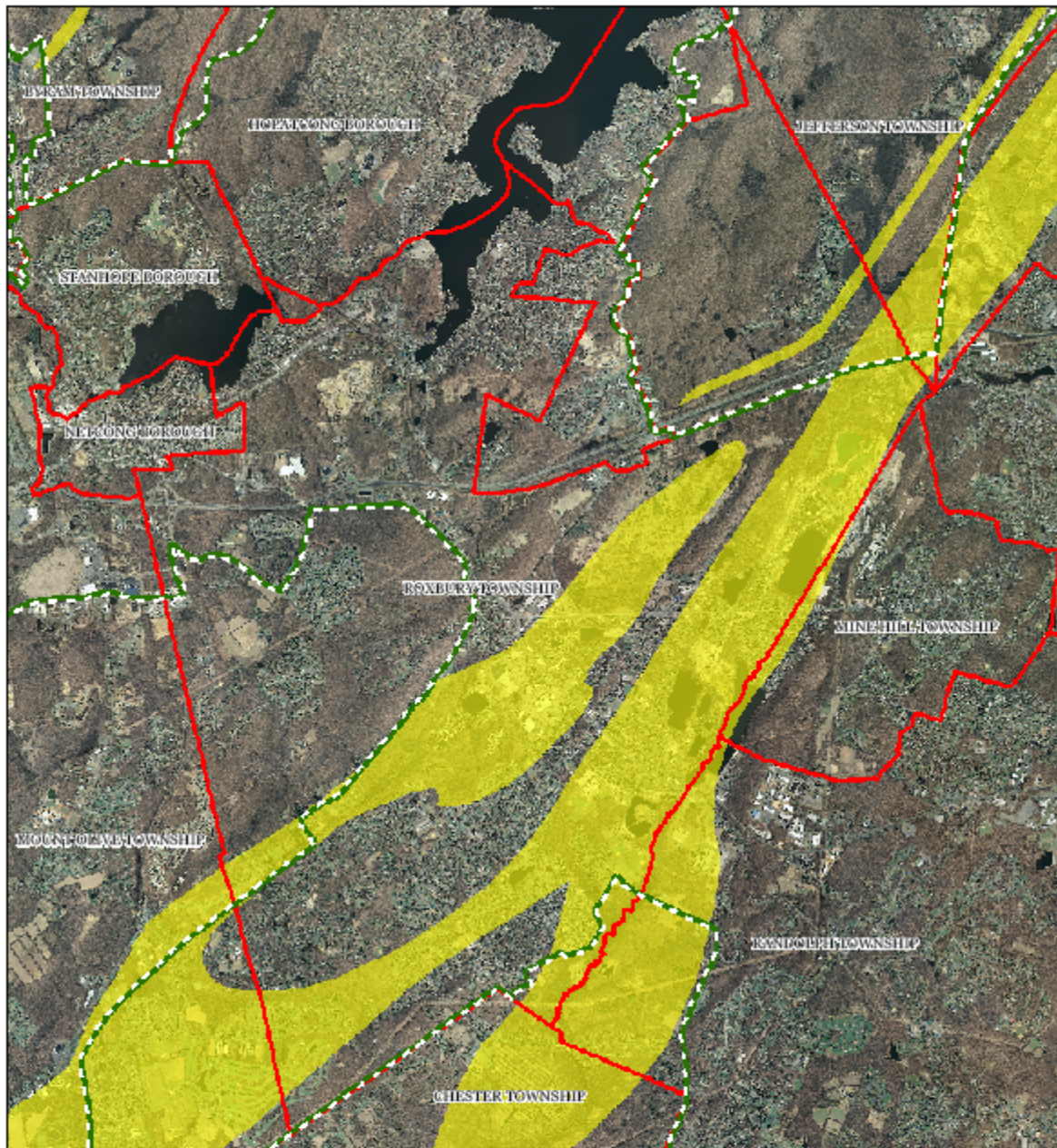


1 inch = 0.922 miles

Highlands Council
New Jersey

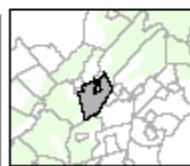


Carbonate Rock Areas



- Carbonate Rock Area
- Preservation Area
- Municipal Boundaries

ROXBURY TOWNSHIP

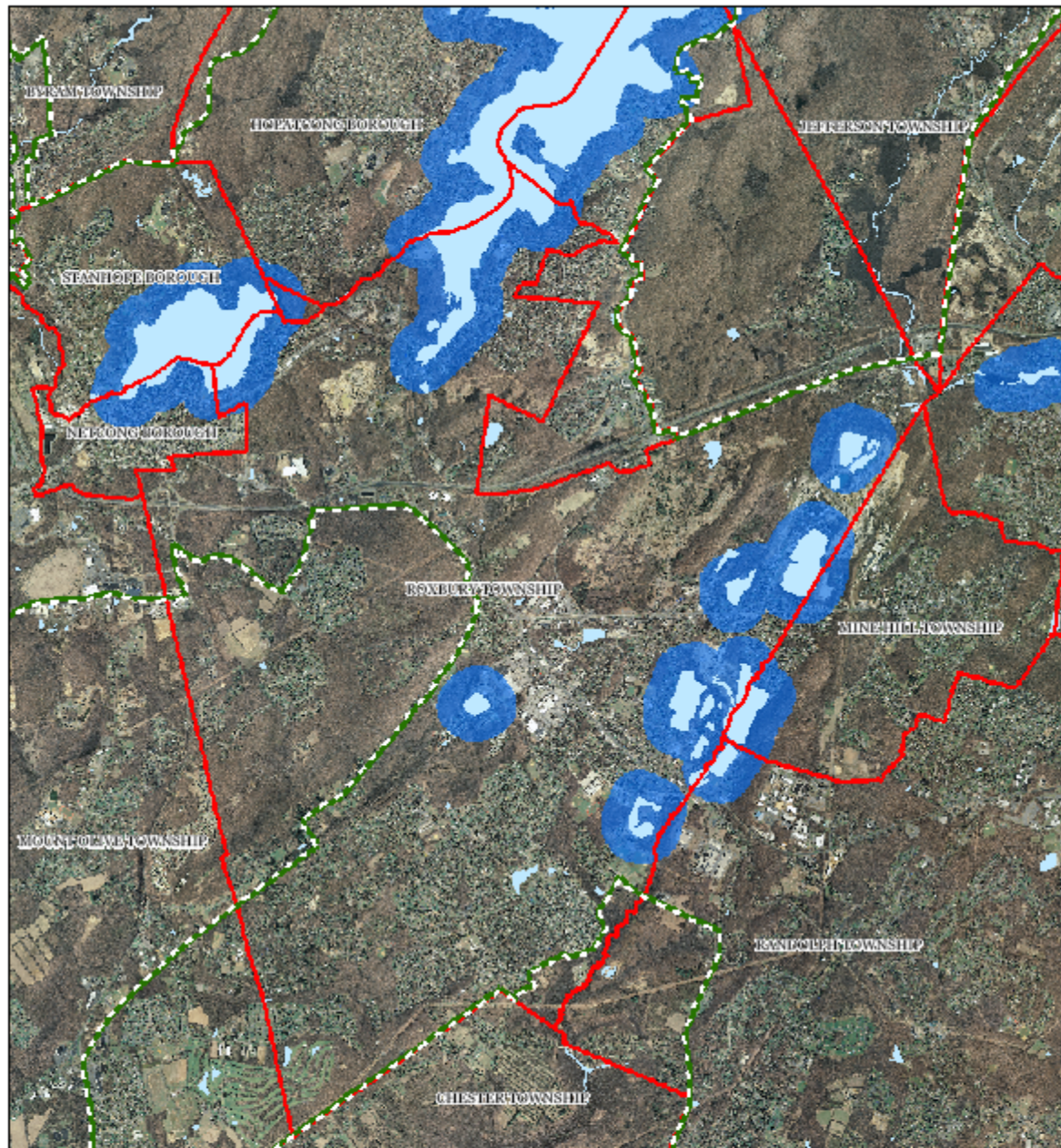


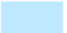



1 inch = 0.922 miles

Highlands Council
New Jersey

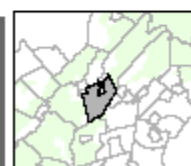
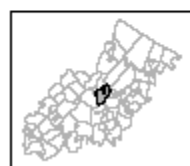


Lake Management Area



-  Lakes & Ponds
-  Lake Management Areas
-  Preservation Area
-  Municipal Boundaries

ROXBURY TOWNSHIP

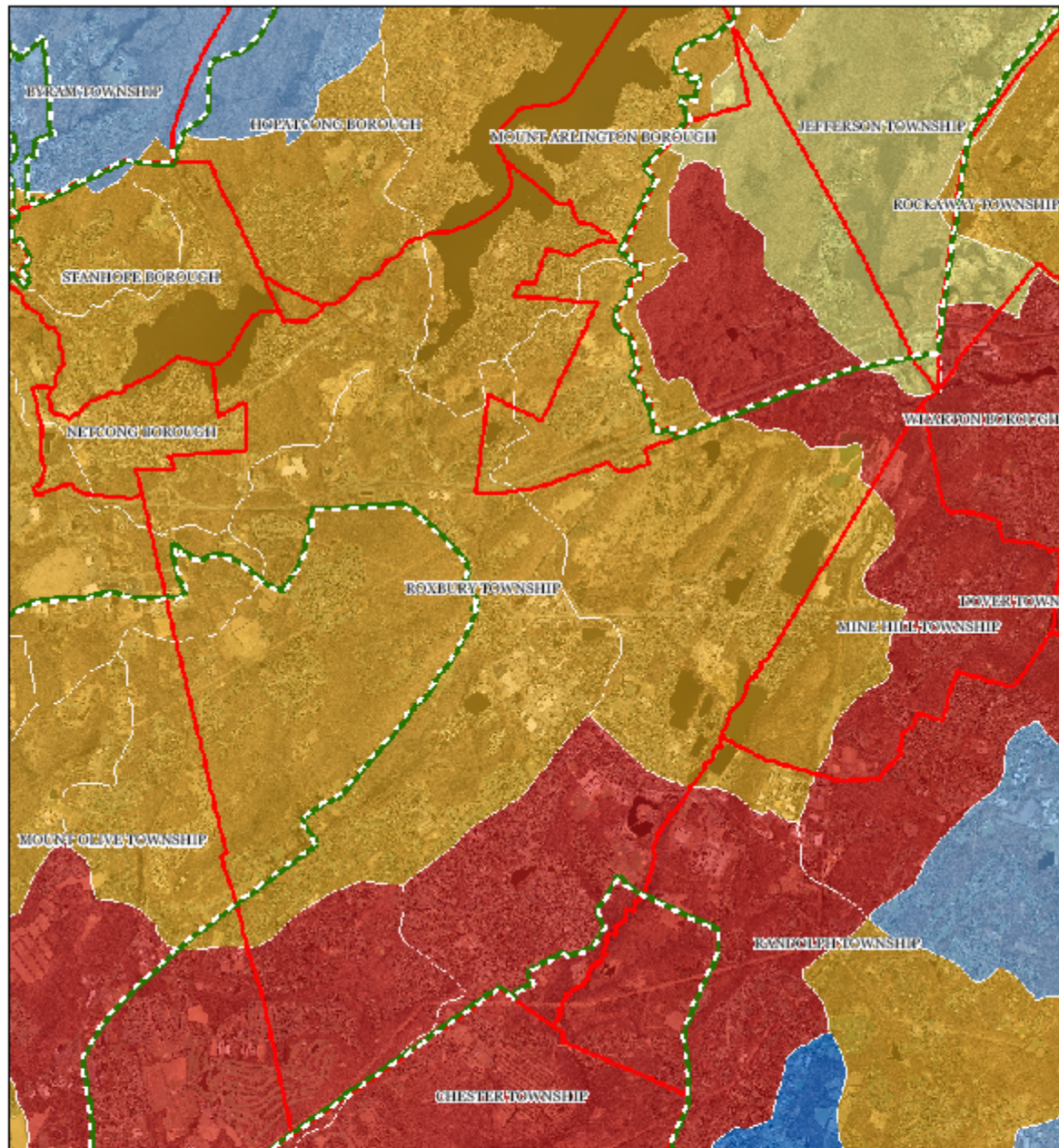


1 inch = 0.922 miles

Highlands Council
New Jersey

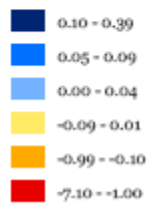


Net Water Availability

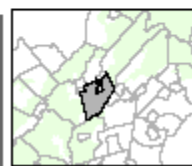


Net Water Availability by HUC14 Subwatershed

Million Gallons Per Day (MGD)



- Preservation Area
- Municipal Boundaries



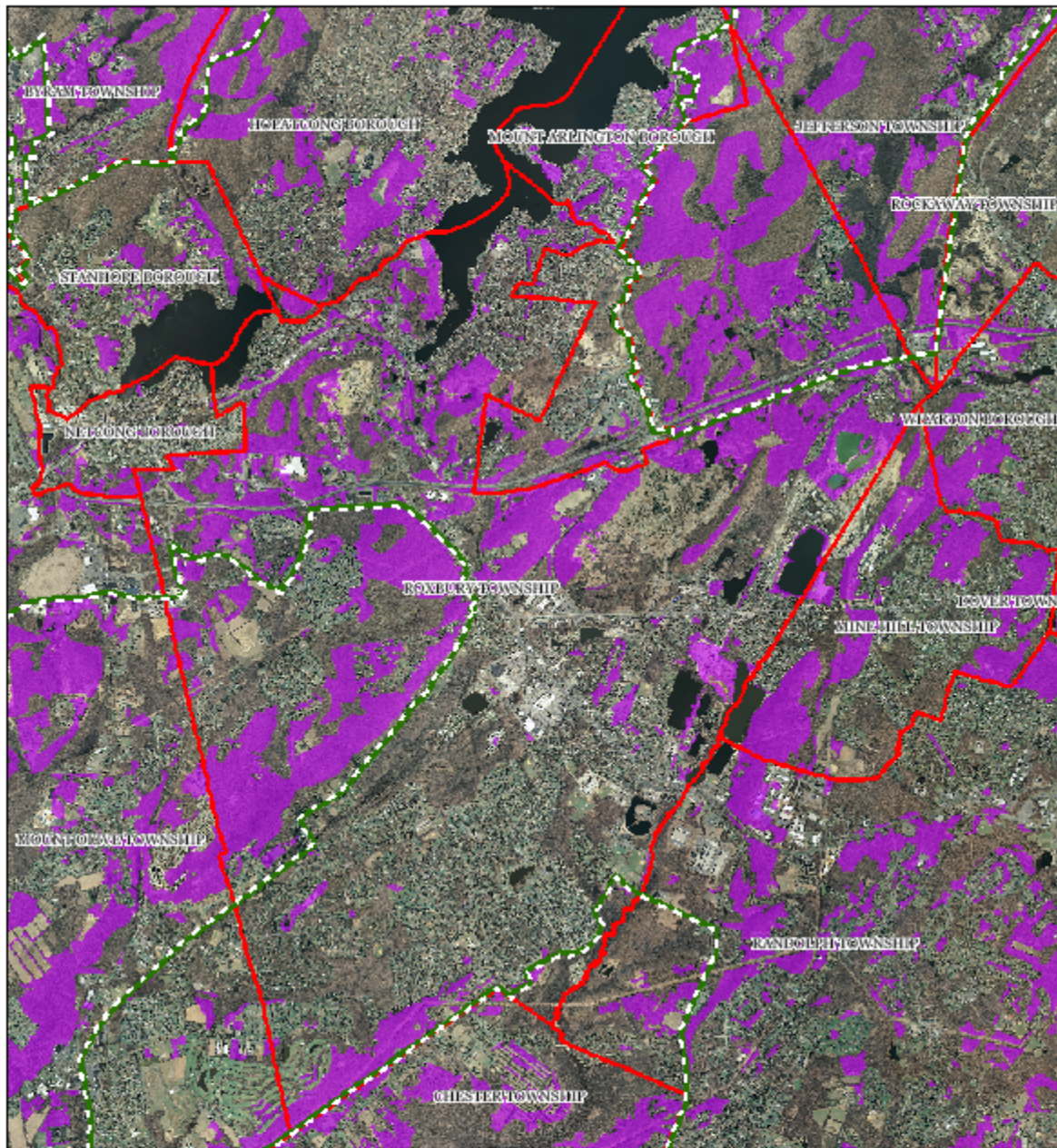
1 inch = 0.922 miles




Highlands Council
New Jersey



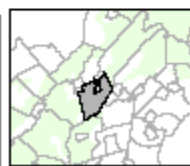
ROXBURY TOWNSHIP

Prime Ground Water Recharge Areas



-  Prime Ground Water Recharge Areas
-  Preservation Area
-  Municipal Boundaries

ROXBURY TOWNSHIP

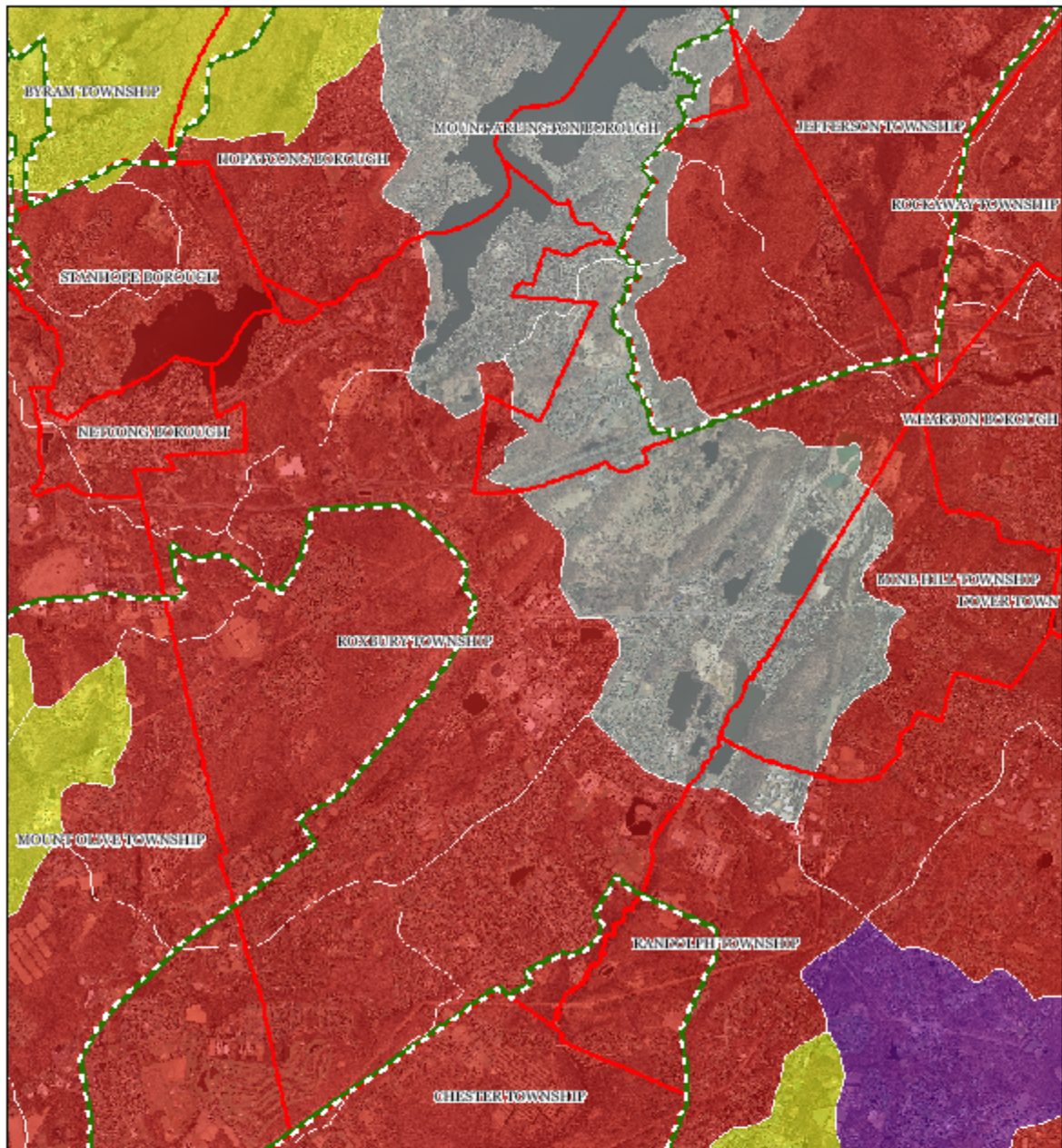


1 inch = 0.922 miles

Highlands Council
New Jersey



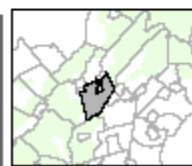
HUC 14s on NJDEP Impaired Waters List



Impaired Waters Overall Assessment by HUC14 Subwatershed

- Non Impacted
- Insufficient Data Available
- Moderate
- Water Quality Impaired
- Preservation Area
- Municipal Boundaries

ROXBURY TOWNSHIP

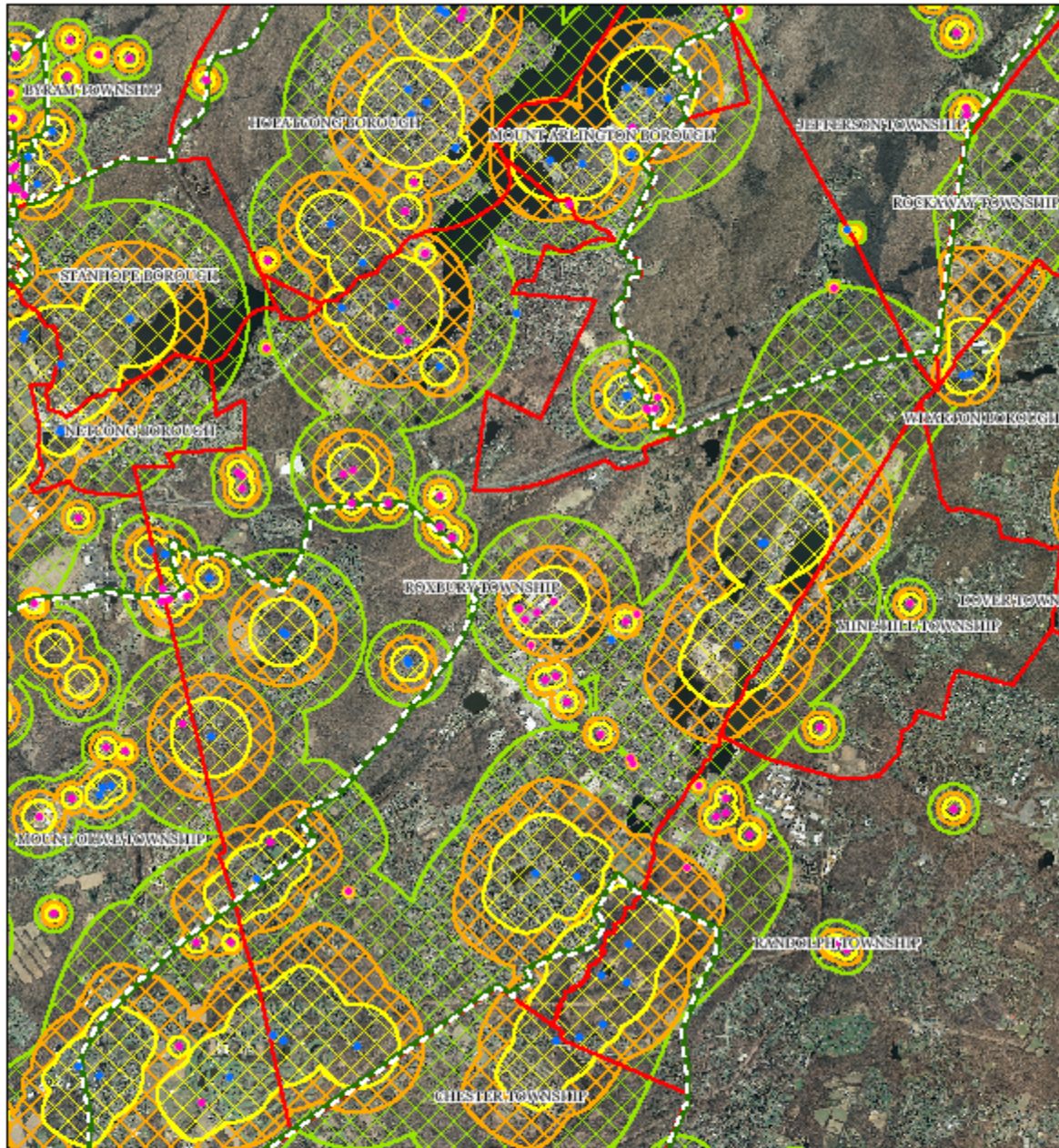


1 inch = 0.922 miles

Highlands Council
New Jersey



Wellhead Protection Areas



ROXBURY TOWNSHIP

• Public Community Wells

• Non-Public Community Wells

Wellhead Protection Areas

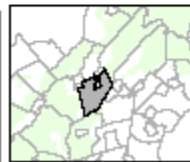
2-Year Tier

5-Year Tier

12-Year Tier

Preservation Area

Municipal Boundaries

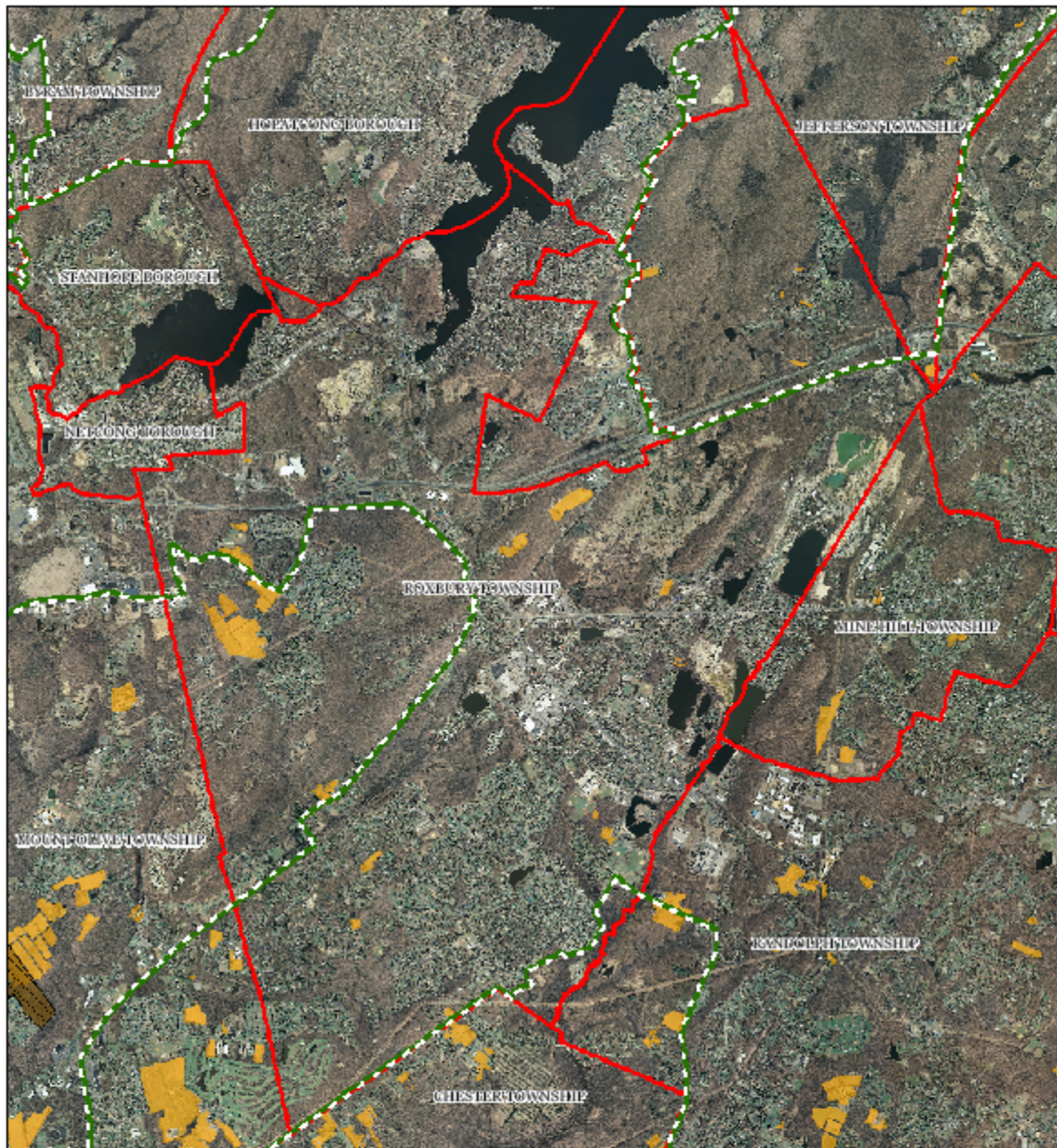


1 inch = 0.922 miles

Highlands Council
New Jersey

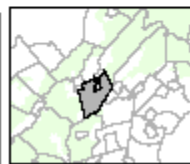
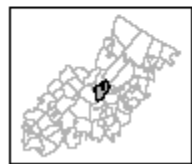
N

Preserved Farms, SADC Easements, All Agricultural Uses



SADC Easements

- | | | | |
|---|--------------------|---|----------------------|
|  | SADC Final |  | Preservation Area |
|  | SADC 8 Year |  | Municipal Boundaries |
|  | SADC Preserved | | |
|  | Preserved Farmland | | |
|  | Agriculture Uses | | |

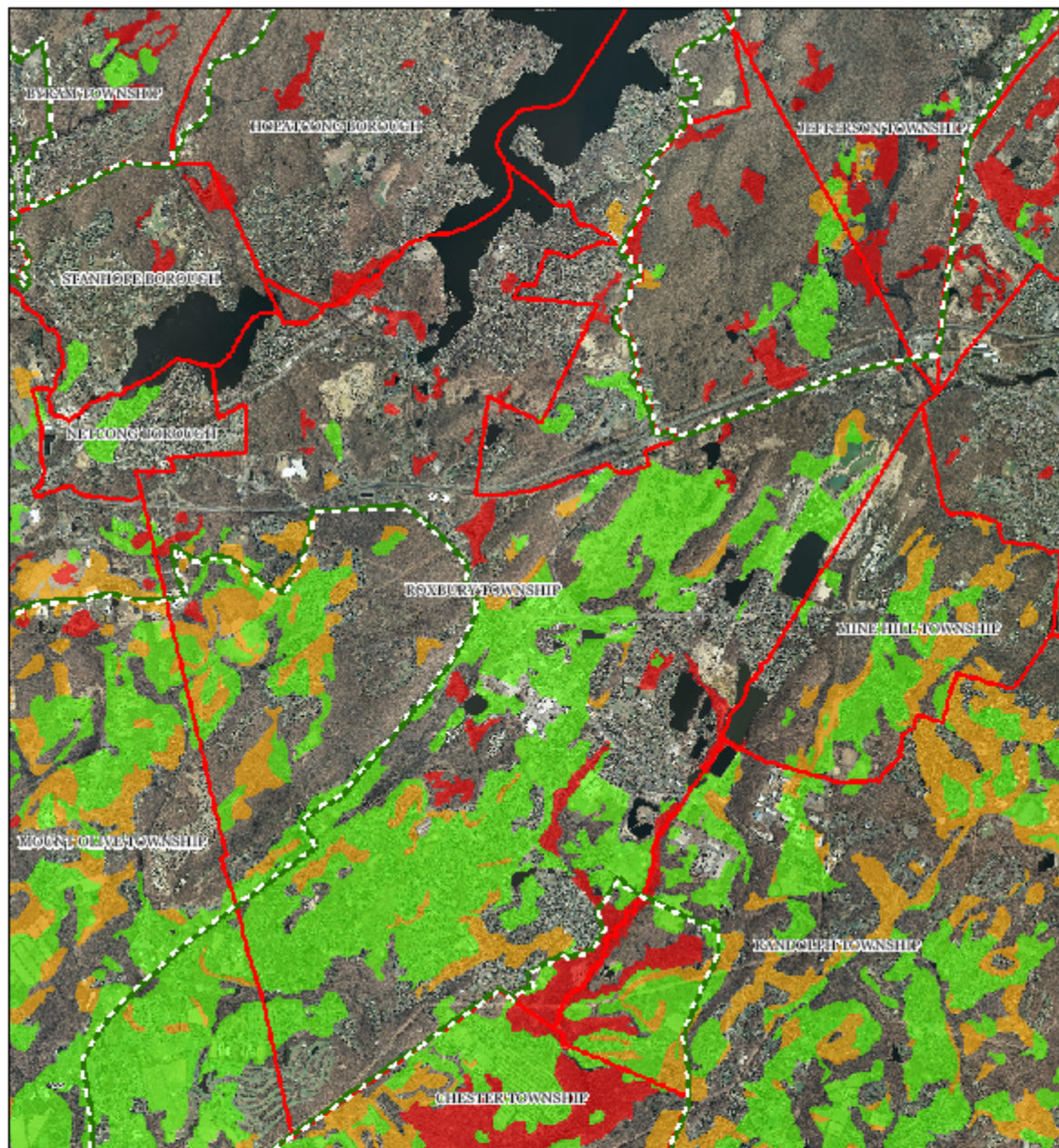


1 inch = 0.922 miles

Highlands Council
New Jersey



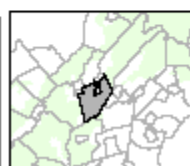
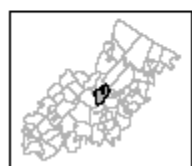
Important Farmland Soils



Important Farmland Soils

- Prime Farmland
- Farmland of Local Importance
- Farmland of Statewide Importance
- Farmland of Unique Importance
- Preservation Area
- Municipal Boundaries

ROXBURY TOWNSHIP

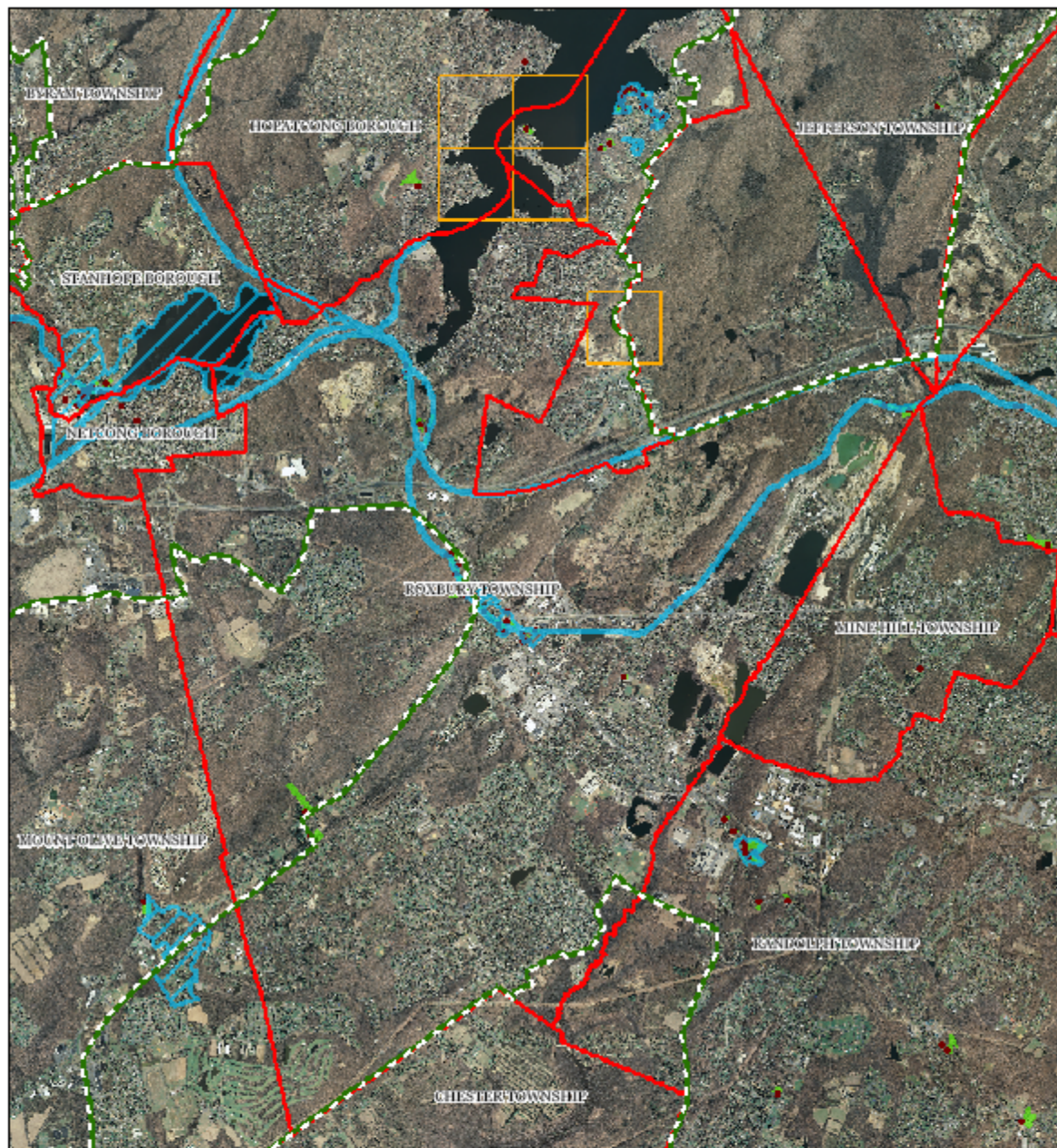


1 inch = 0.922 miles

Highlands Council
New Jersey

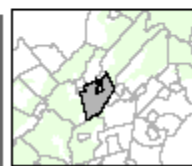
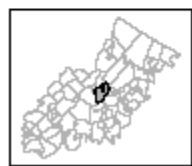


Historic, Cultural, and Archeological Resources Inventory



- Preservation Area
- Municipal Boundaries
- Archaeological Grids (1 sqmi)
- NJ Historic Districts
- Historic Property Points
- Historic Property Polygons

ROXBURY TOWNSHIP

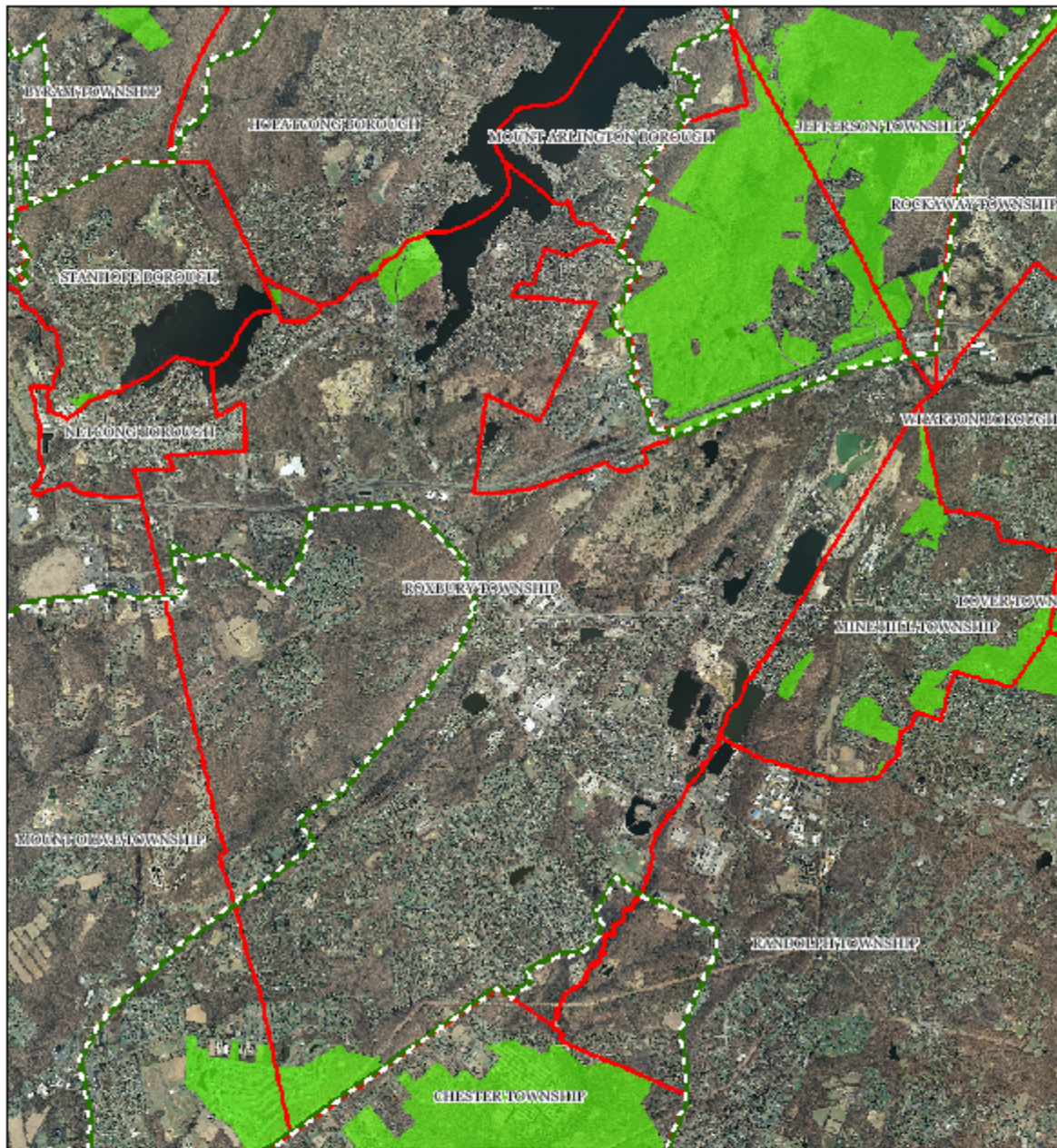


1 inch = 0.922 miles

Highlands Council
New Jersey

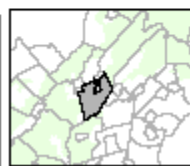


Baseline Scenic Resources Inventory



- Scenic Resources
- Municipal Boundaries
- Preservation Area

ROXBURY TOWNSHIP

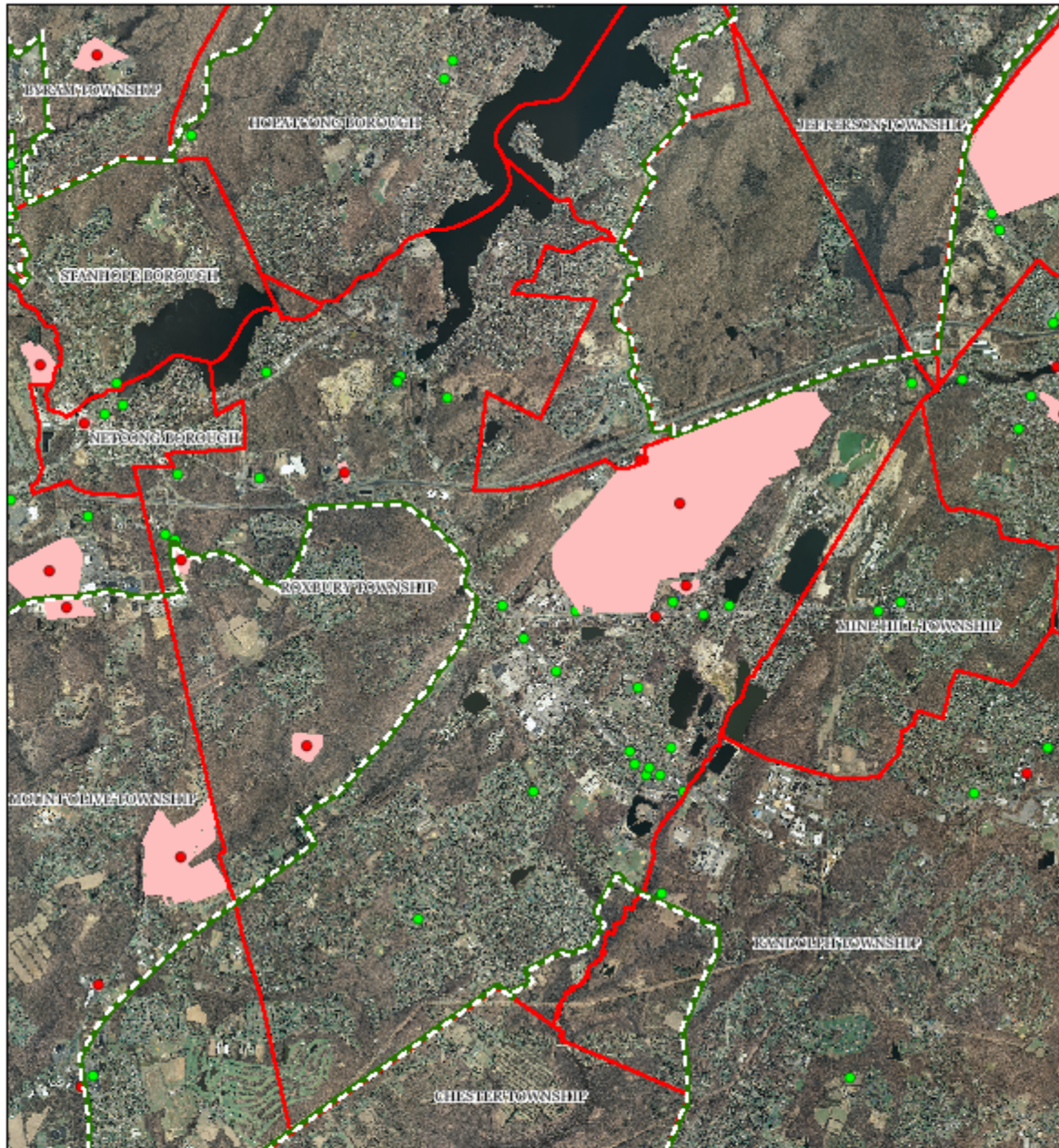


1 inch = 0.922 miles

Highlands
Council
New Jersey



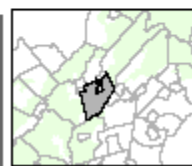
Highlands Contaminated Site Inventory



Highlands Contaminated Site Inventory

ROXBURY TOWNSHIP

- Tier 1 Sites
- Tier 1 Sites (Polygons)
- Tier 2 Sites
- Preservation Area
- Municipal Boundaries

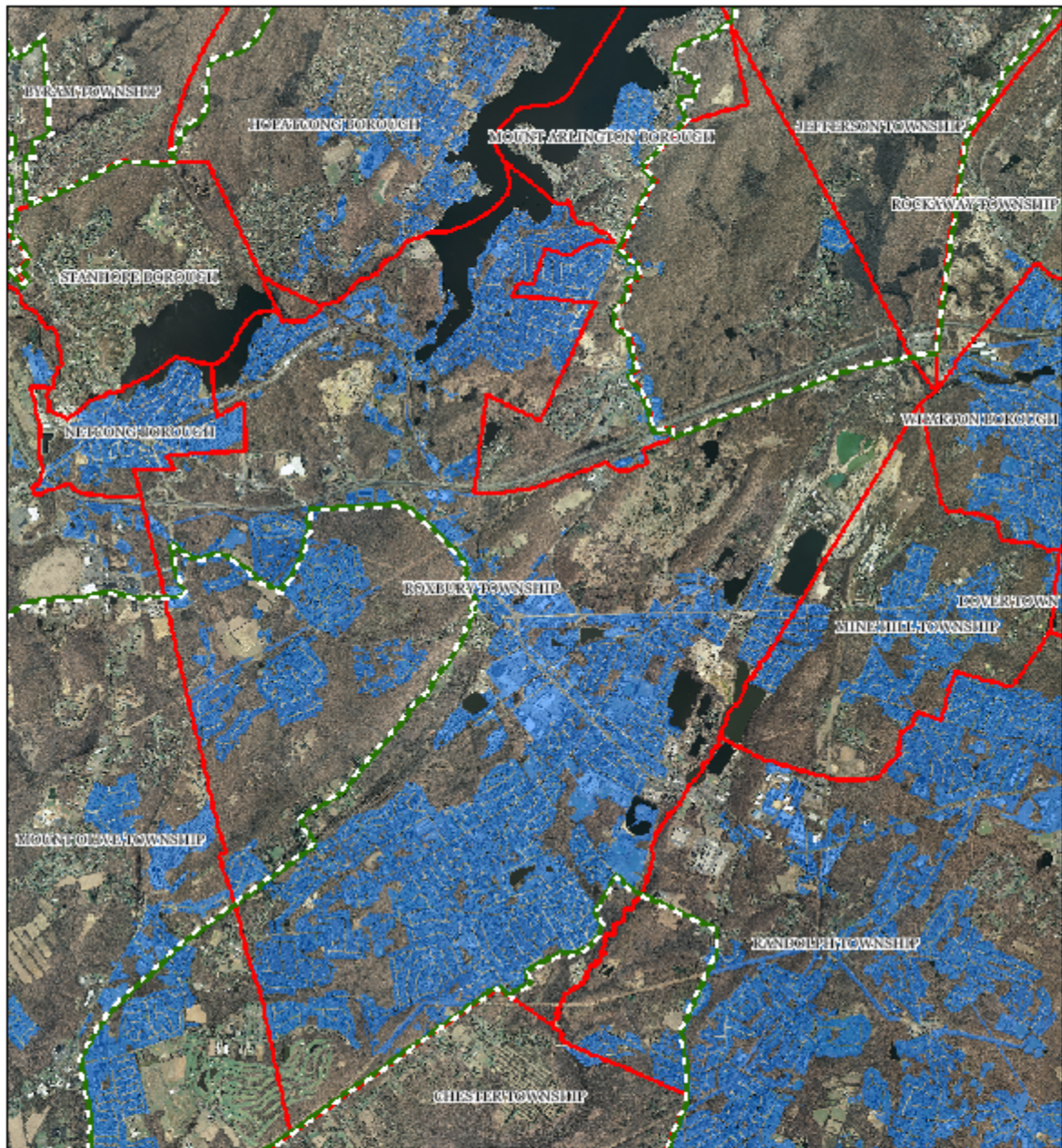


1 inch = 0.922 miles

Highlands Council
New Jersey



Public Community Water Systems

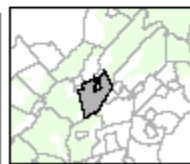


Public Community Water Systems

Preservation Area

Municipal Boundaries

ROXBURY TOWNSHIP

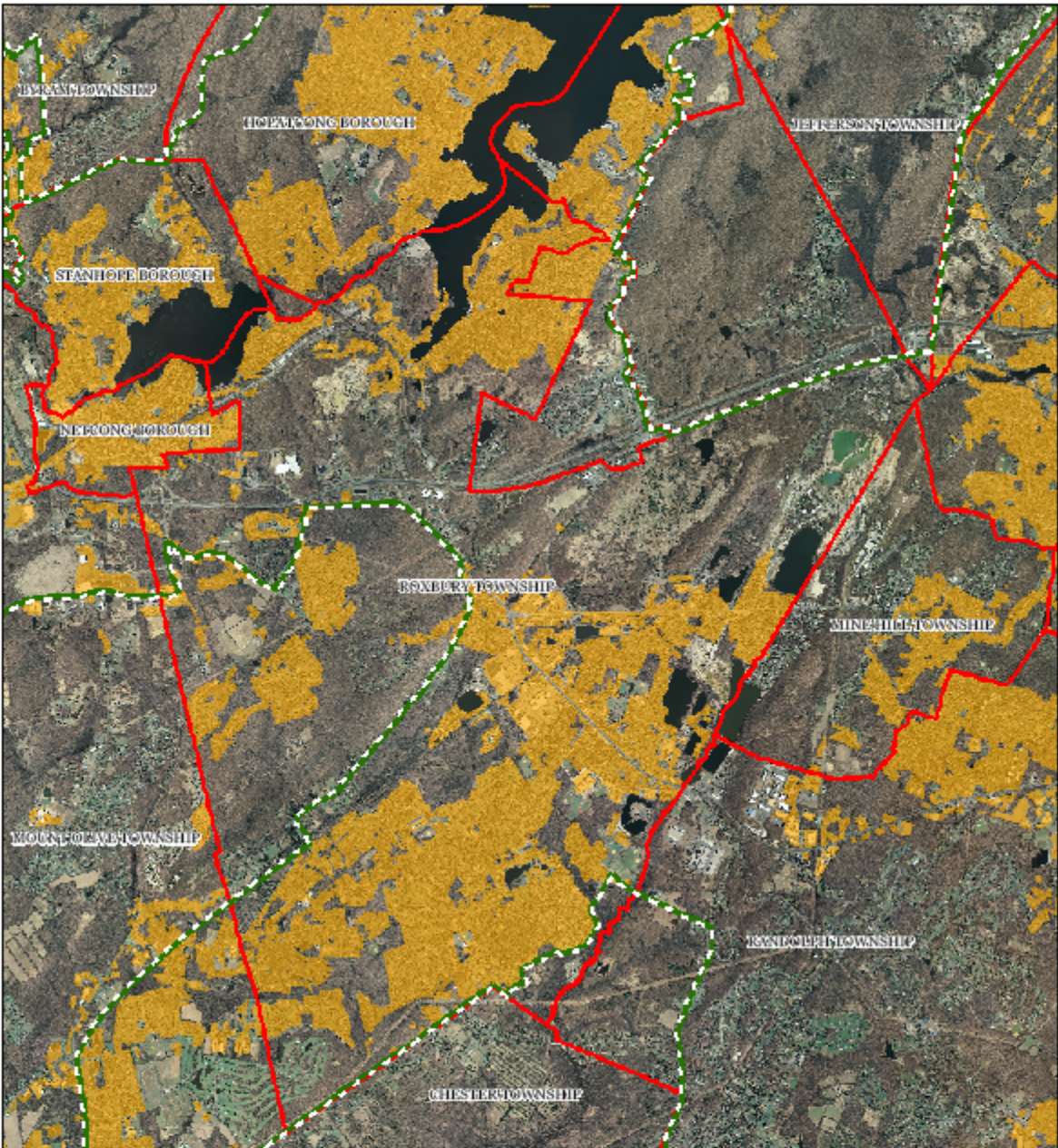


1 inch = 0.922 miles

Highlands Council
New Jersey

N

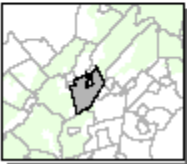
Highlands Domestic Sewerage Facilities



Highlands Domestic Sewerage Facilities

ROXBURY TOWNSHIP

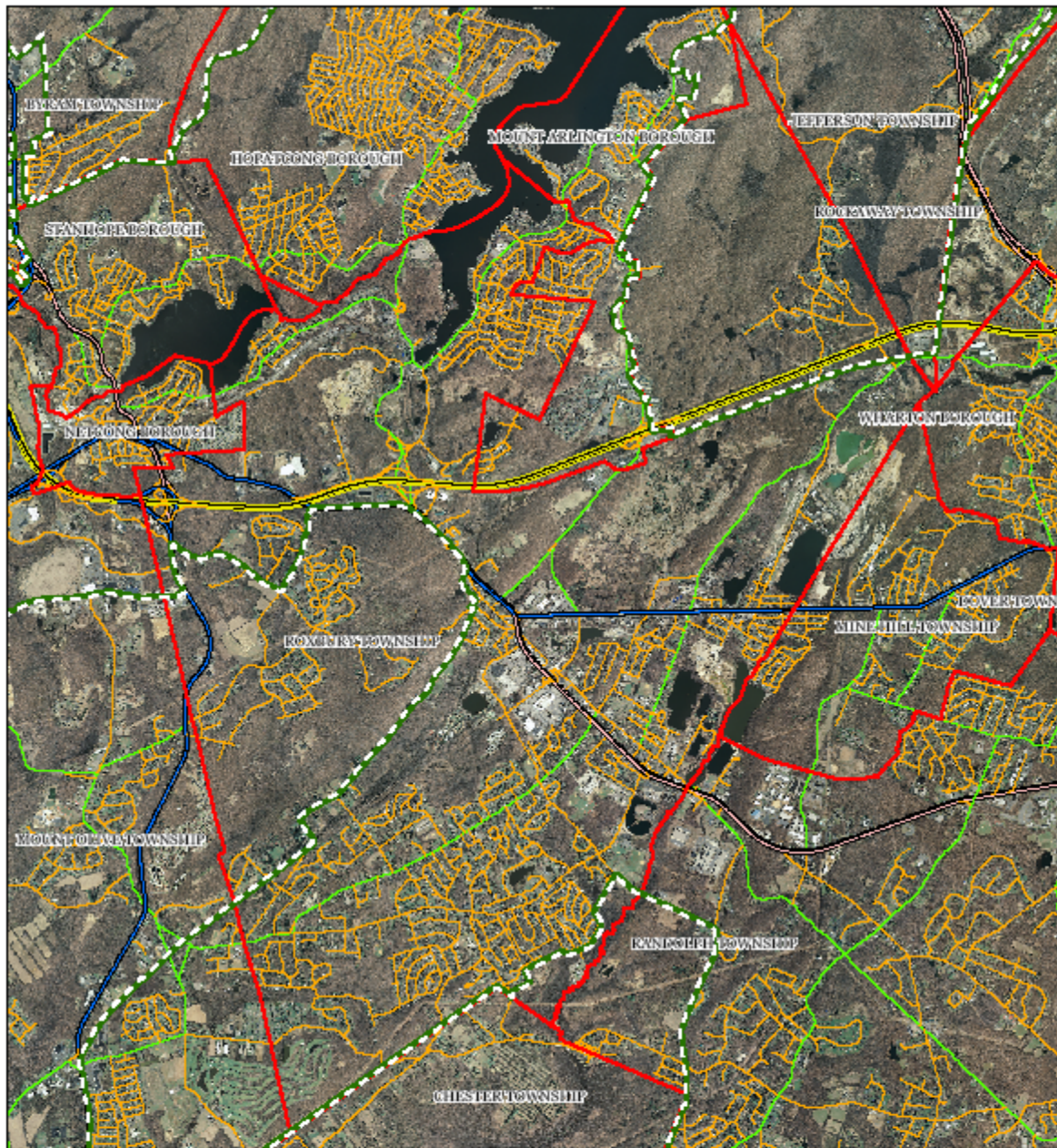
- Existing Area Served
- Preservation Area
- Municipal Boundaries



1 inch = 0.922 miles



Highlands Roadway Network



Roadway Network

— Interstate Highways

— U.S. Routes

— State Routes

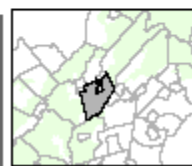
— County Routes

— Local Routes

— Preservation Area

— Municipal Boundaries

ROXBURY TOWNSHIP

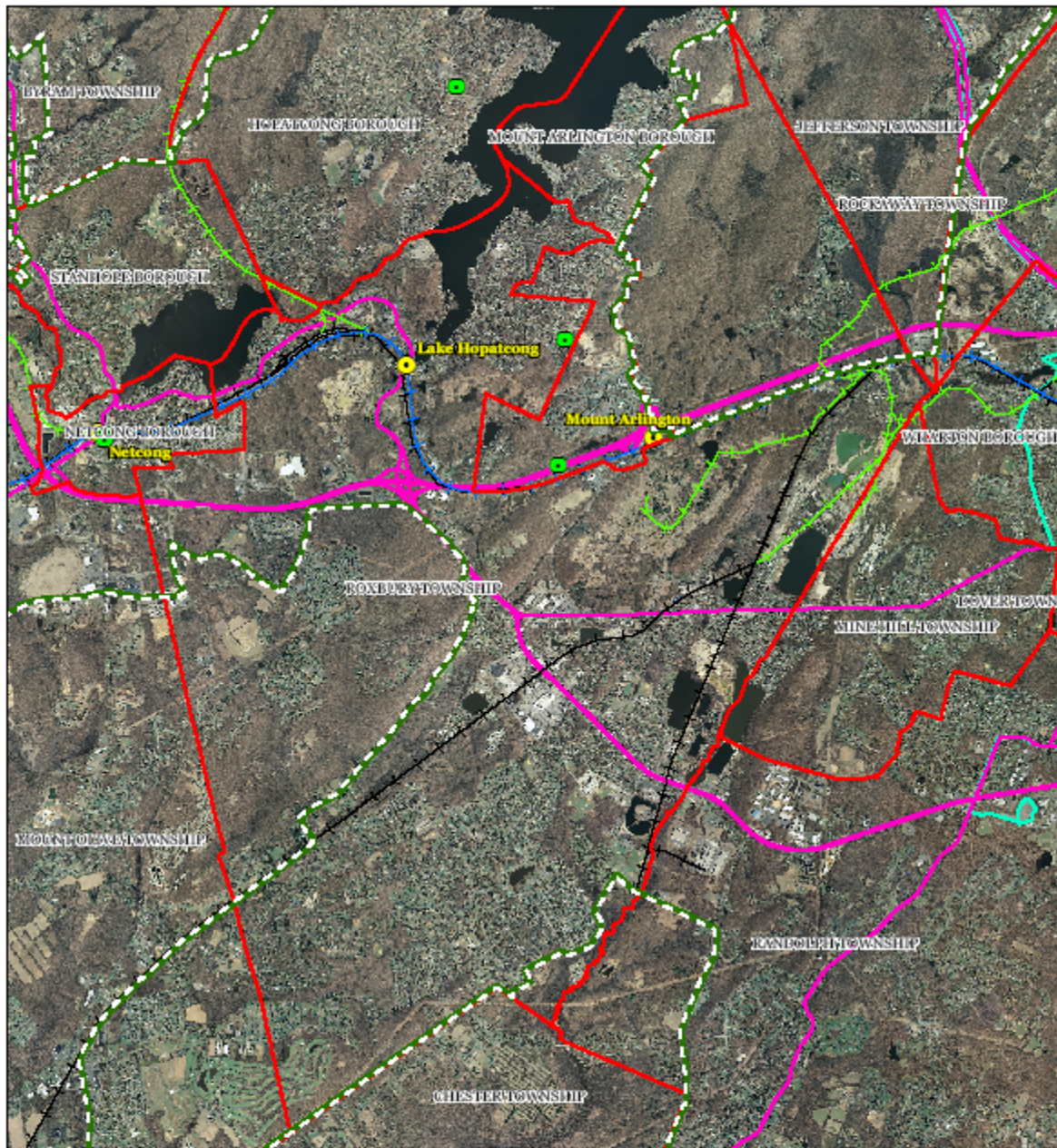


1 inch = 0.922 miles

Highlands Council
New Jersey

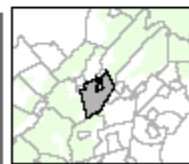
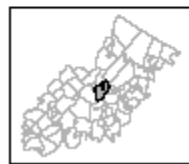


Highlands Transit Network



- Rail Network**
- Boonton Line
 - Main Line & Bergen County Line
 - Morris and Essex Line
 - Raritan Valley Line
- Freight Rail Lines**
- Freight Rail Lines
 - Abandoned Freight Rail
- Other Features**
- Rail Stations
 - Park and Ride Sites
 - Private Bus Lines
 - NJ Transit Bus Lines
 - Airports

ROXBURY TOWNSHIP

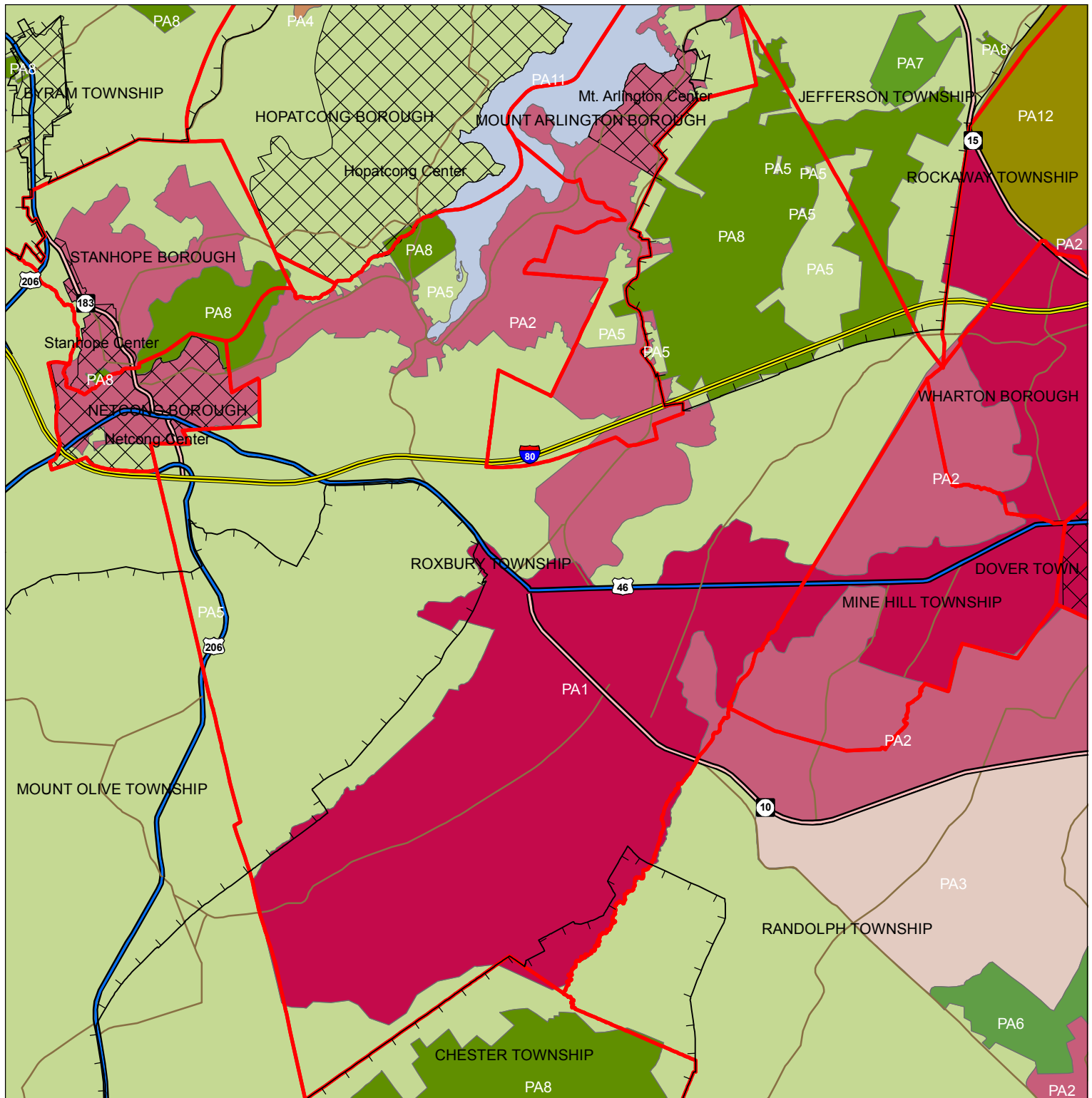


1 inch = 0.922 miles

Highlands Council
New Jersey



State Planning Areas & Designated Centers



Legend

- Preservation Area
- Municipal Boundaries
- Interstate Highways
- U.S. Routes
- State Routes
- County Routes
- Designated Centers*

State Planning Areas*

- METROPOLITAN (PA1)
- SUBURBAN (PA2)
- FRINGE (PA3)
- RURAL (PA4)
- RURAL ENVIRONMENTALLY SENSITIVE (PA42)
- ENVIRONMENTALLY SENSITIVE (PA5)
- PARK (PA6)
- FEDERAL PARK (PA7)
- STATE PARK (PA8)
- WATER (PA11)
- MILITARY (PA12)

1 inch equals 0.98 miles

* All designated centers expired on 1/7/2008 except Byram (expires 5/19/2010), Stanhope (expires 10/16/2008), and Sparta and Vernon (expire 7/16/2009). Center designation may be redesignated by the State Planning Commission and the Highlands Council. State Planning Areas are from the State Development and Redevelopment Plan.

