

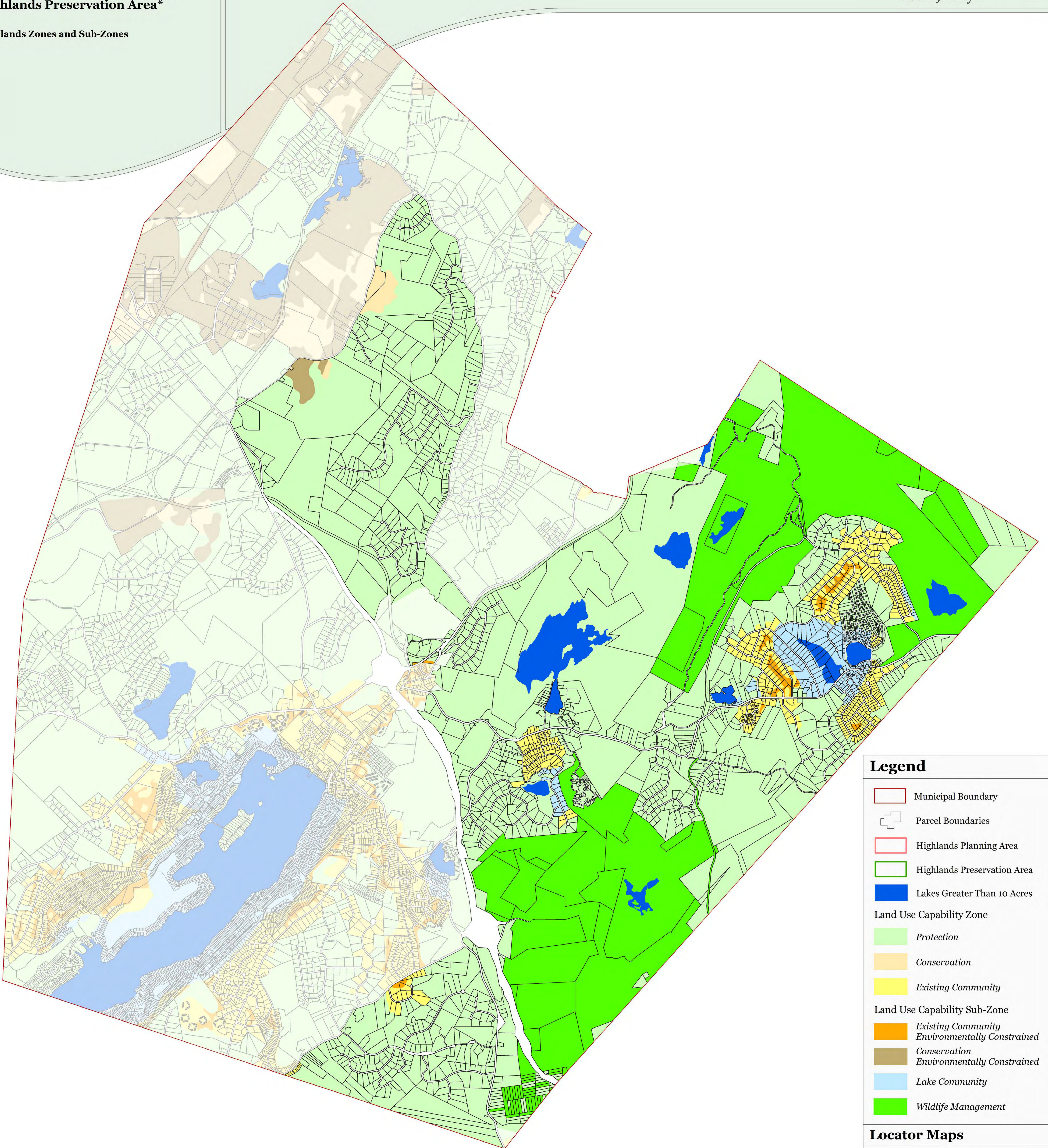
Exhibit 1:

TOWNSHIP OF SPARTA, SUSSEX COUNTY, NJ



Township of Sparta
Highlands Preservation Area*

Highlands Zones and Sub-Zones



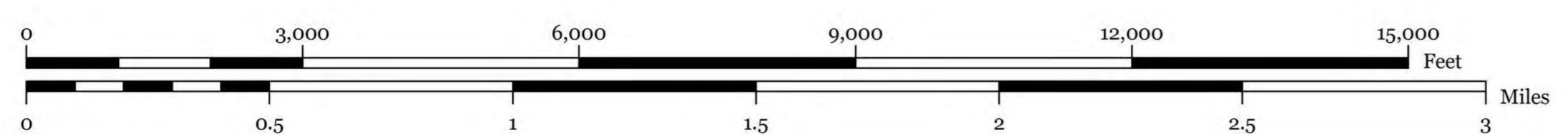
Legend

- Municipal Boundary
- Parcel Boundaries
- Highlands Planning Area
- Highlands Preservation Area
- Lakes Greater Than 10 Acres
- Land Use Capability Zone**
 - Protection
 - Conservation
 - Existing Community
- Land Use Capability Sub-Zone**
 - Existing Community Environmentally Constrained
 - Conservation Environmentally Constrained
 - Lake Community
 - Wildlife Management

Locator Maps



*Planning Area shown for informational purposes only.



TOWNSHIP OF
SPARTA
SUSSEX COUNTY, N.J.
MAP PREPARED BY THE NEW JERSEY
HIGHLANDS COUNCIL, AUGUST 1, 2011

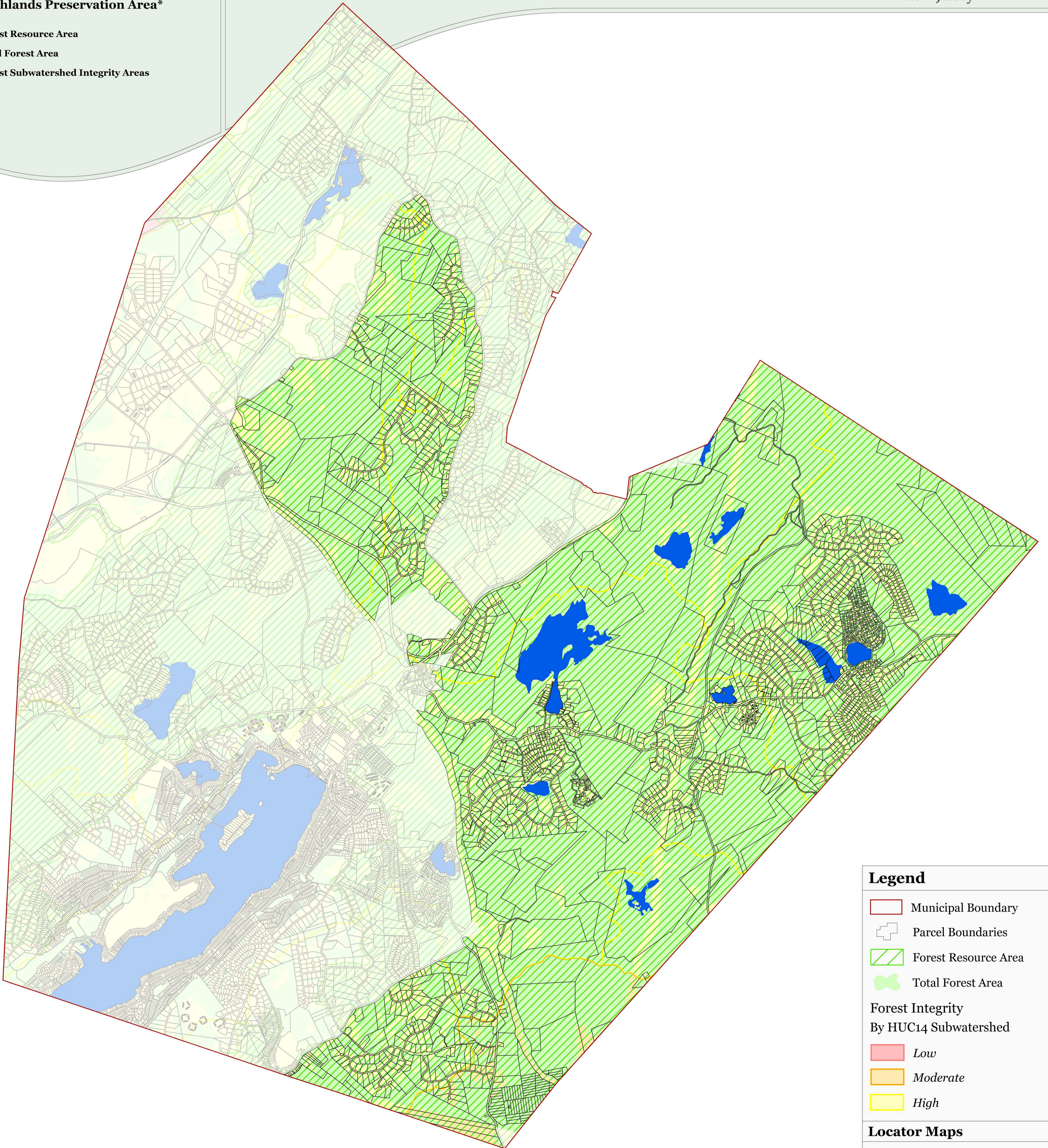
Exhibit 2:

TOWNSHIP OF SPARTA, SUSSEX COUNTY, NJ







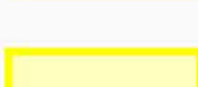


**Township of Sparta
Highlands Preservation Area***

Forest Resource Area
Total Forest Area
Forest Subwatershed Integrity Areas



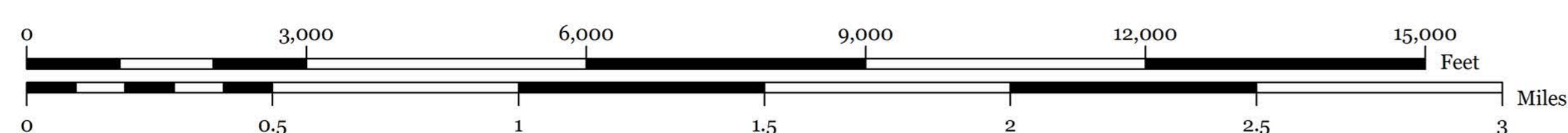
Legend

-  Municipal Boundary
-  Parcel Boundaries
-  Forest Resource Area
-  Total Forest Area
- Forest Integrity
By HUC14 Subwatershed**
-  *Low*
-  *Moderate*
-  *High*

Locator Maps



*Planning Area shown for informational purposes only.



TOWNSHIP OF
SPARTA
SUSSEX COUNTY, N.J.
MAP PREPARED BY THE NEW JERSEY
HIGHLANDS COUNCIL, AUGUST 1, 2011



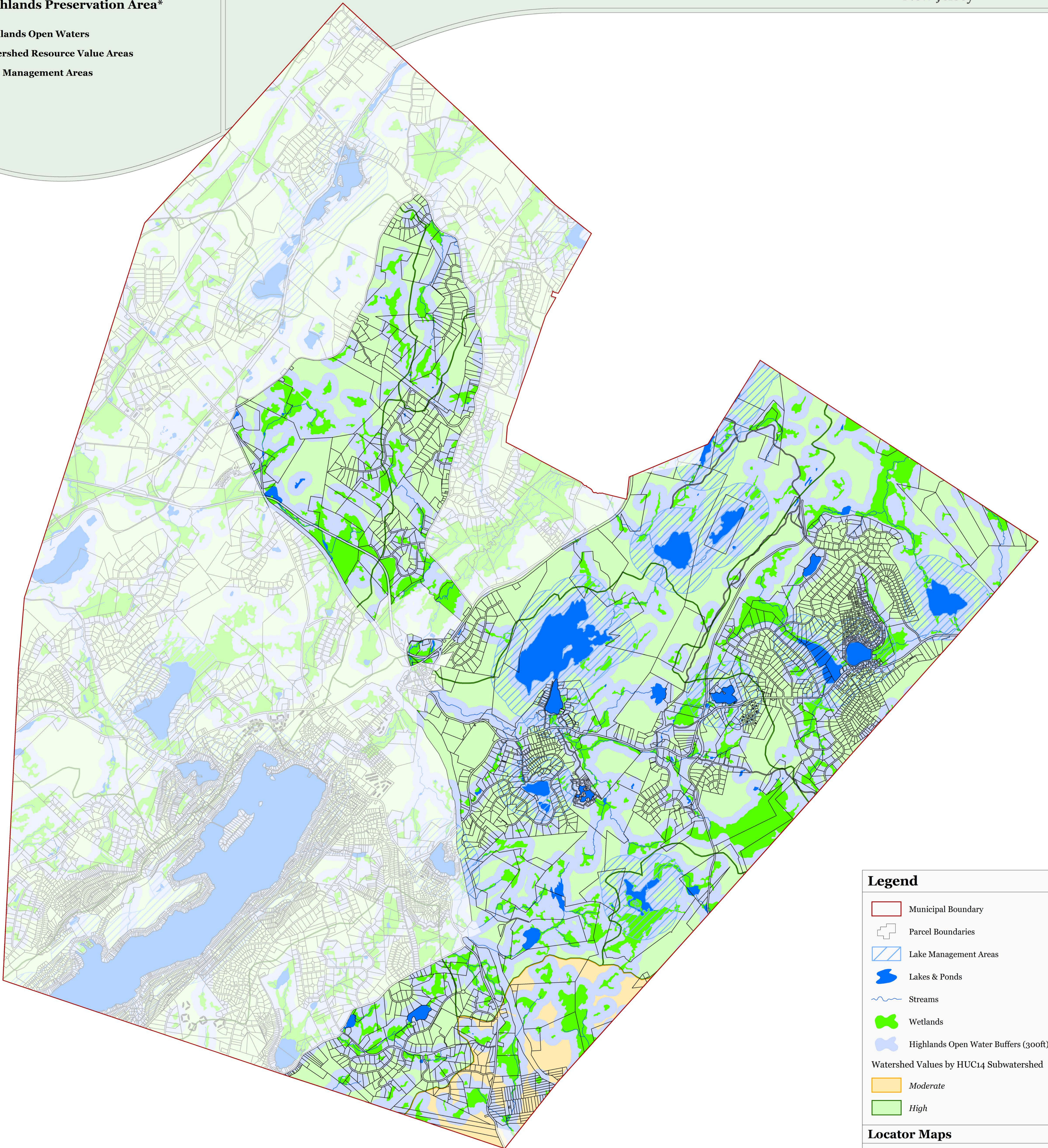
Exhibit 3:

TOWNSHIP OF SPARTA, SUSSEX COUNTY, NJ



**Township of Sparta
Highlands Preservation Area***

**Highlands Open Waters
Watershed Resource Value Areas
Lake Management Areas**

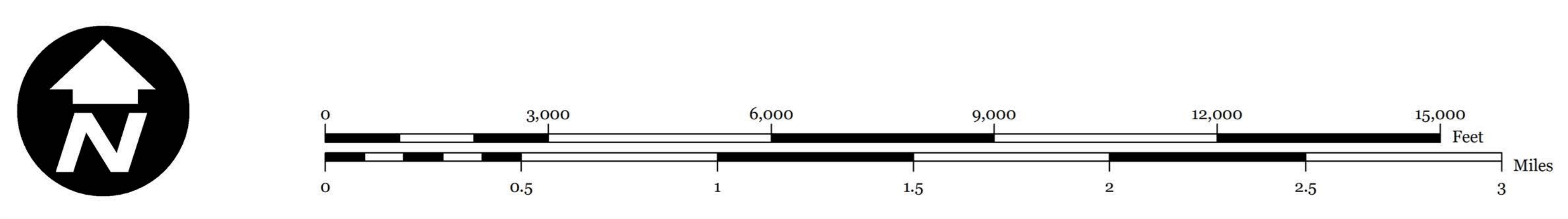


Legend

- Municipal Boundary
- Parcel Boundaries
- Lake Management Areas
- Lakes & Ponds
- Streams
- Wetlands
- Highlands Open Water Buffers (300ft)
- Watershed Values by HUC14 Subwatershed
 - Moderate
 - High

Locator Maps

*Planning Area shown for informational purposes only.



TOWNSHIP OF SPARTA
SUSSEX COUNTY, N.J.
MAP PREPARED BY THE NEW JERSEY
HIGHLANDS COUNCIL, AUGUST 1, 2011

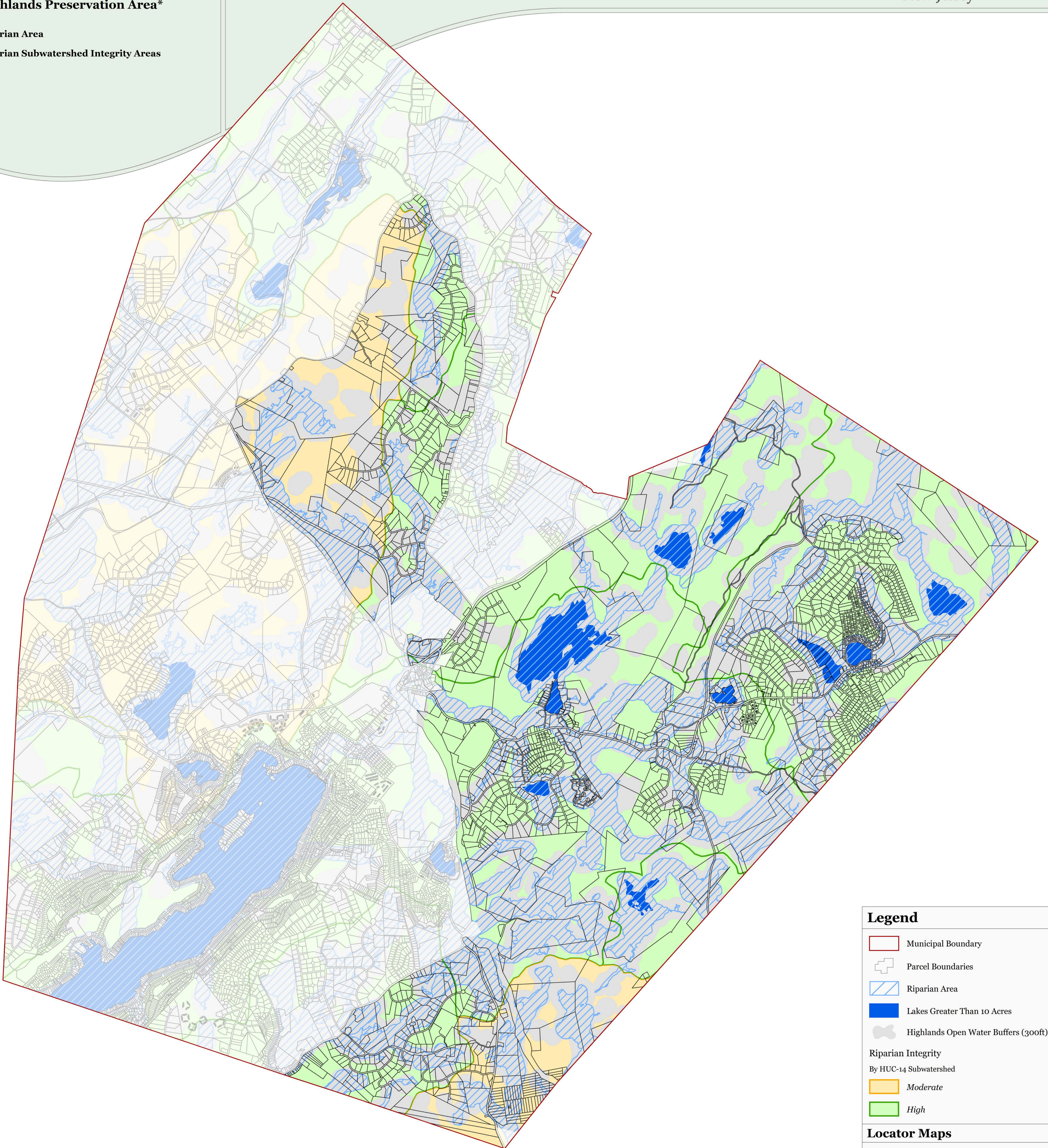
Exhibit 4:

TOWNSHIP OF SPARTA, SUSSEX COUNTY, NJ



**Township of Sparta
Highlands Preservation Area***

**Riparian Area
Riparian Subwatershed Integrity Areas**



Legend

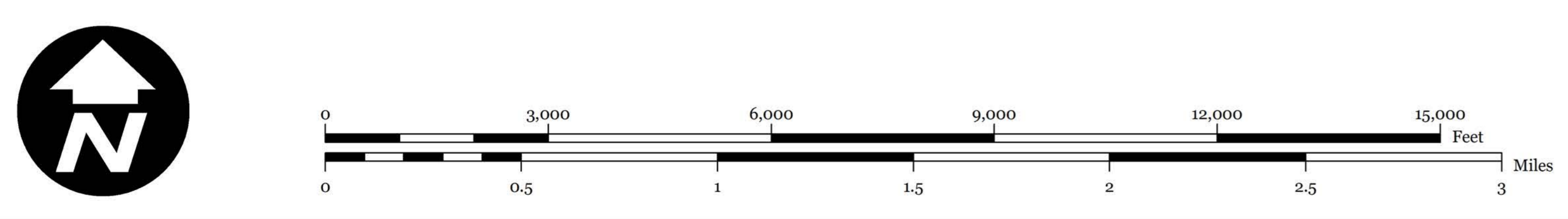
- Municipal Boundary
- Parcel Boundaries
- Riparian Area
- Lakes Greater Than 10 Acres
- Highlands Open Water Buffers (300ft)

Riparian Integrity
By HUC-14 Subwatershed

- Moderate
- High

Locator Maps

*Planning Area shown for informational purposes only.



TOWNSHIP OF SPARTA
SUSSEX COUNTY, N.J.

MAP PREPARED BY THE NEW JERSEY
HIGHLANDS COUNCIL, AUGUST 1, 2011

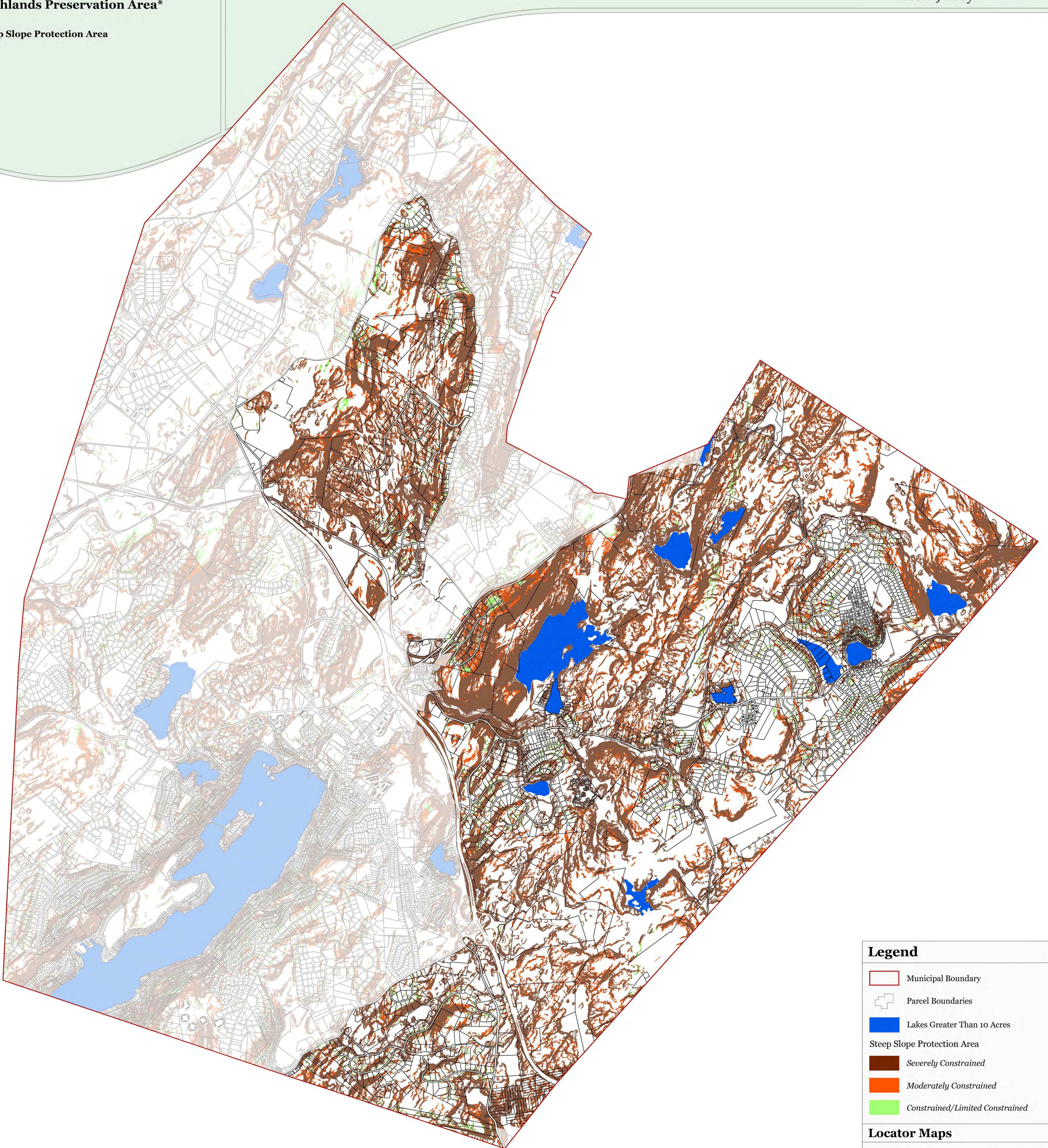
Exhibit 5:

TOWNSHIP OF SPARTA, SUSSEX COUNTY, NJ



Township of Sparta
Highlands Preservation Area*

Steep Slope Protection Area



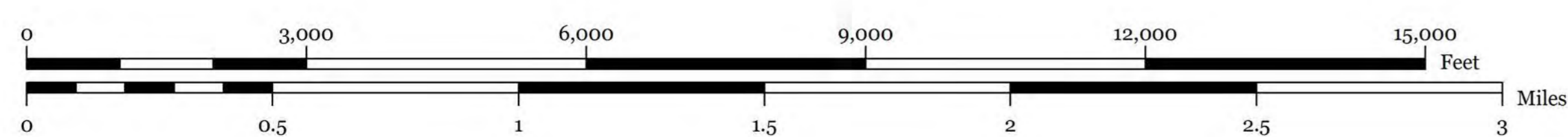
Legend

- Municipal Boundary
- Parcel Boundaries
- Lakes Greater Than 10 Acres
- Steep Slope Protection Area**
 - Severely Constrained
 - Moderately Constrained
 - Constrained/Limited Constrained

Locator Maps



*Planning Area shown for informational purposes only.



TOWNSHIP OF
SPARTA
SUSSEX COUNTY, N.J.
MAP PREPARED BY THE NEW JERSEY
HIGHLANDS COUNCIL, AUGUST 1, 2011



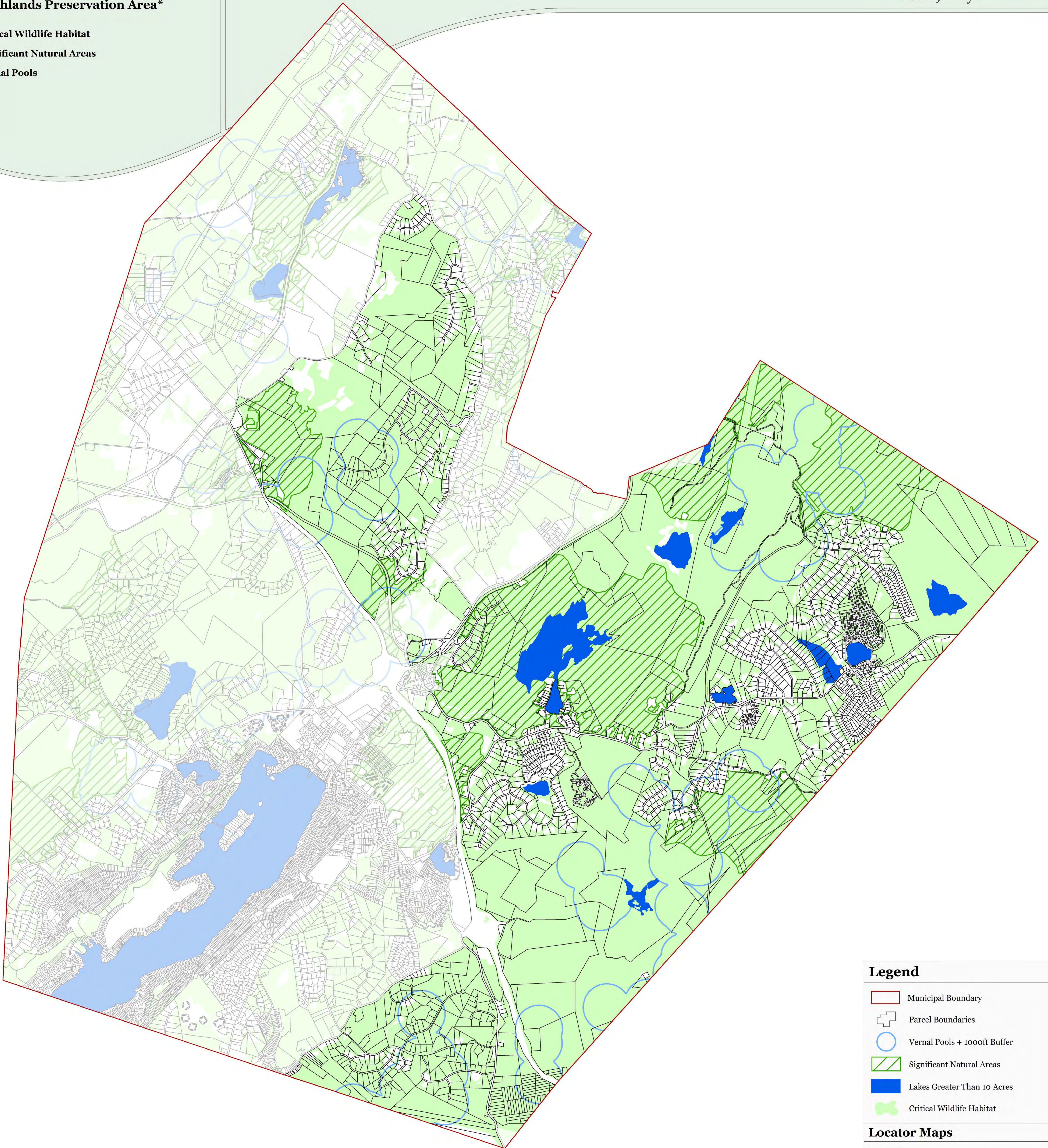
Exhibit 6:

TOWNSHIP OF SPARTA, SUSSEX COUNTY, NJ



**Township of Sparta
Highlands Preservation Area***

- Critical Wildlife Habitat
- Significant Natural Areas
- Vernal Pools



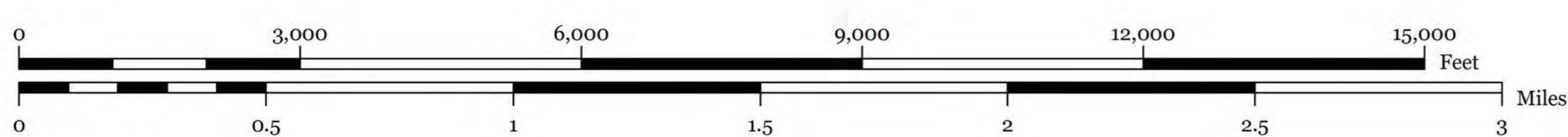
Legend

- Municipal Boundary
- Parcel Boundaries
- Vernal Pools + 100ft Buffer
- Significant Natural Areas
- Lakes Greater Than 10 Acres
- Critical Wildlife Habitat

Locator Maps



*Planning Area shown for informational purposes only.



TOWNSHIP OF
SPARTA
SUSSEX COUNTY, N.J.
MAP PREPARED BY THE NEW JERSEY
HIGHLANDS COUNCIL, AUGUST 1, 2011



Exhibit 7:

TOWNSHIP OF SPARTA, SUSSEX COUNTY, NJ

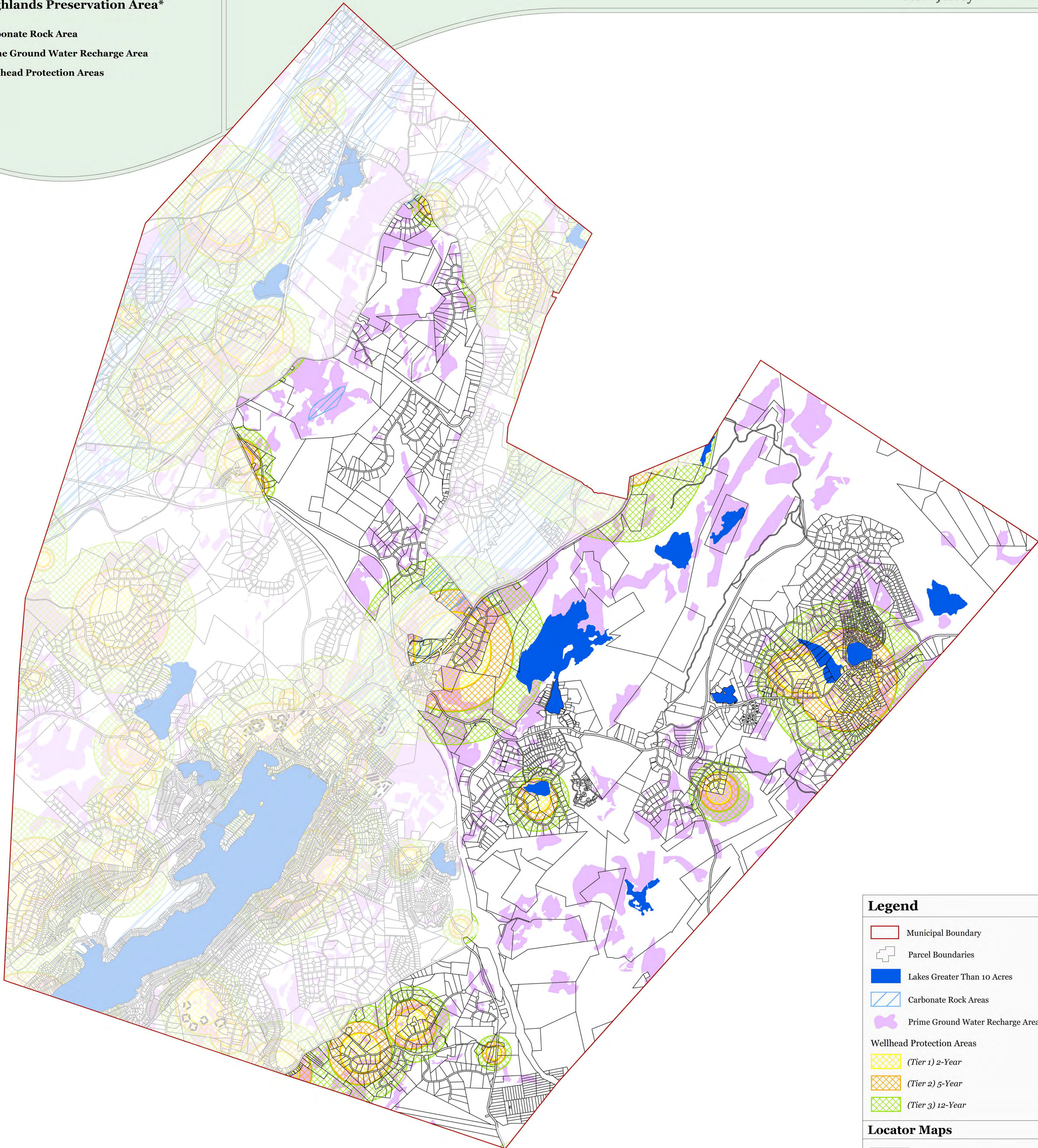


**Township of Sparta
Highlands Preservation Area***

Carbonate Rock Area

Prime Ground Water Recharge Area

Wellhead Protection Areas

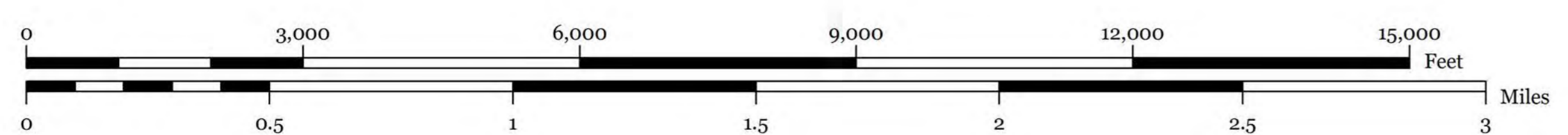
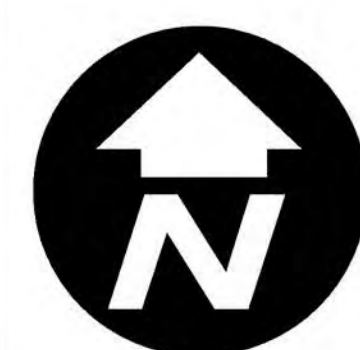


Legend

- Municipal Boundary
- Parcel Boundaries
- Lakes Greater Than 10 Acres
- Carbonate Rock Areas
- Prime Ground Water Recharge Areas
- Wellhead Protection Areas
 - (Tier 1) 2-Year
 - (Tier 2) 5-Year
 - (Tier 3) 12-Year

Locator Maps

*Planning Area shown for informational purposes only.



TOWNSHIP OF SPARTA
SUSSEX COUNTY, N.J.
MAP PREPARED BY THE NEW JERSEY HIGHLANDS COUNCIL, AUGUST 1, 2011

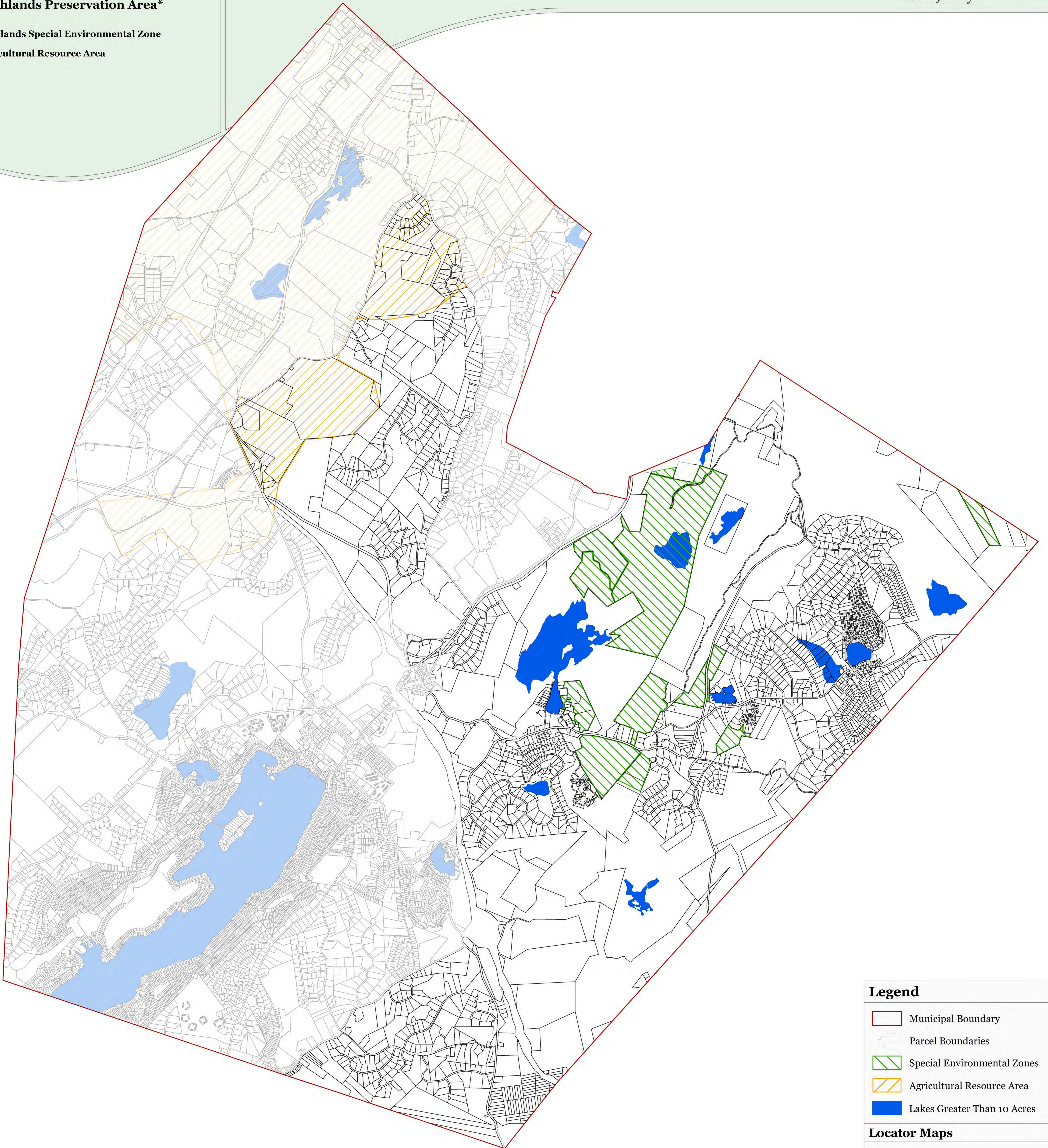
Exhibit 8:

TOWNSHIP OF SPARTA, SUSSEX COUNTY, NJ



Township of Sparta
Highlands Preservation Area*

Highlands Special Environmental Zone
Agricultural Resource Area



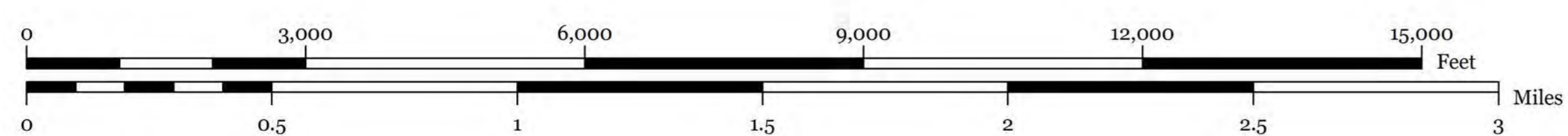
Legend

- Municipal Boundary
- Parcel Boundaries
- Special Environmental Zones
- Agricultural Resource Area
- Lakes Greater Than 10 Acres

Locator Maps



*Planning Area shown for informational purposes only.



TOWNSHIP OF
SPARTA
SUSSEX COUNTY, N.J.
MAP PREPARED BY THE NEW JERSEY
HIGHLANDS COUNCIL, AUGUST 1, 2011



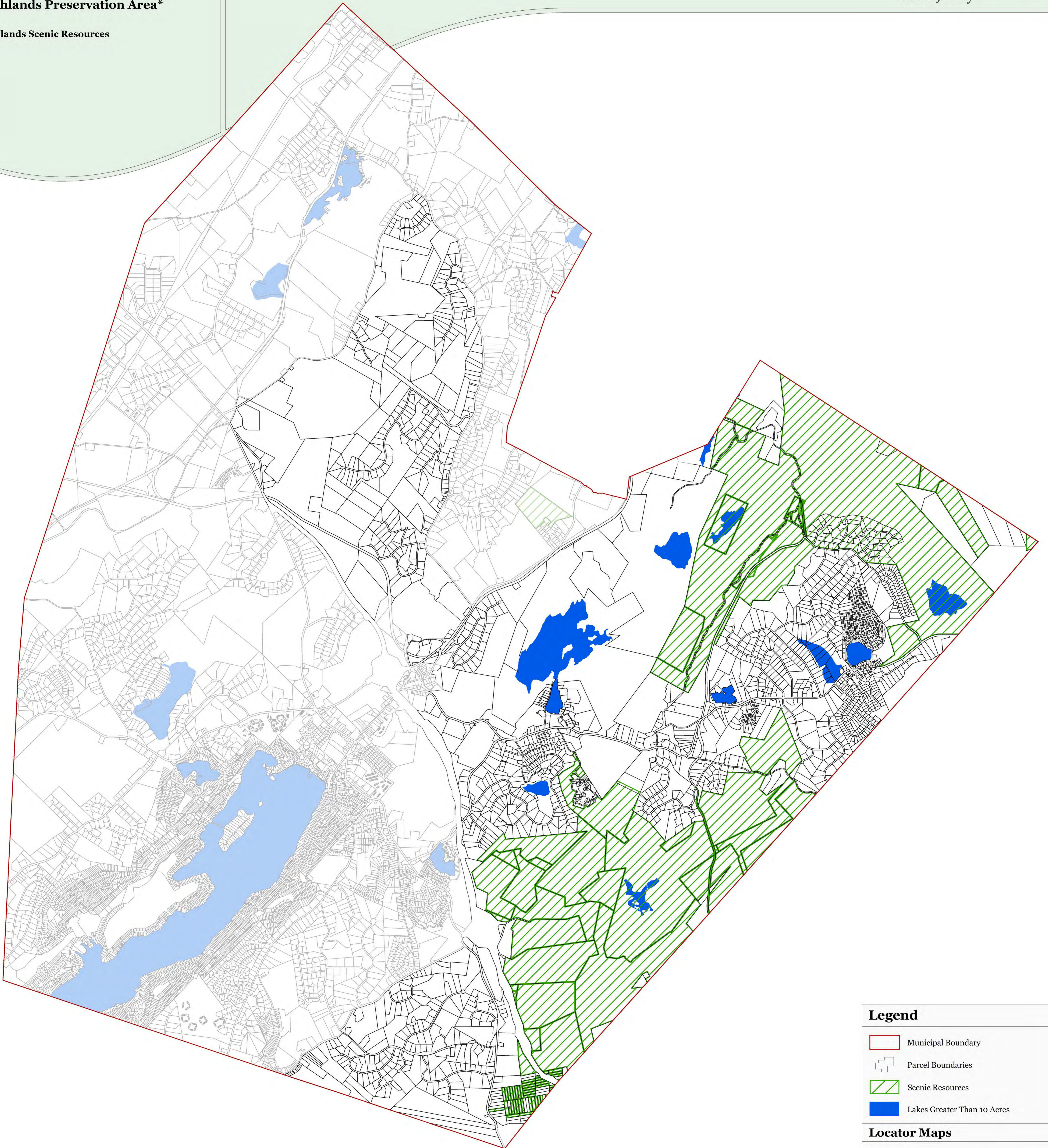
Exhibit 9:

TOWNSHIP OF SPARTA, SUSSEX COUNTY, NJ



Township of Sparta
Highlands Preservation Area*

Highlands Scenic Resources

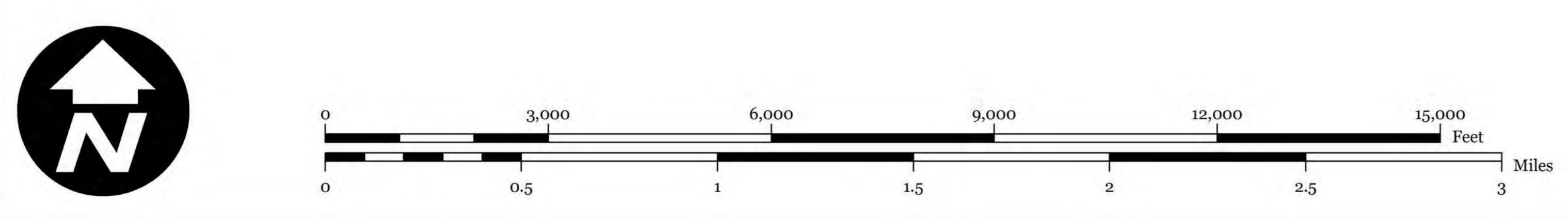


Legend

- Municipal Boundary
- Parcel Boundaries
- Scenic Resources
- Lakes Greater Than 10 Acres

Locator Maps

*Planning Area shown for informational purposes only.



TOWNSHIP OF
SPARTA
SUSSEX COUNTY, N.J.

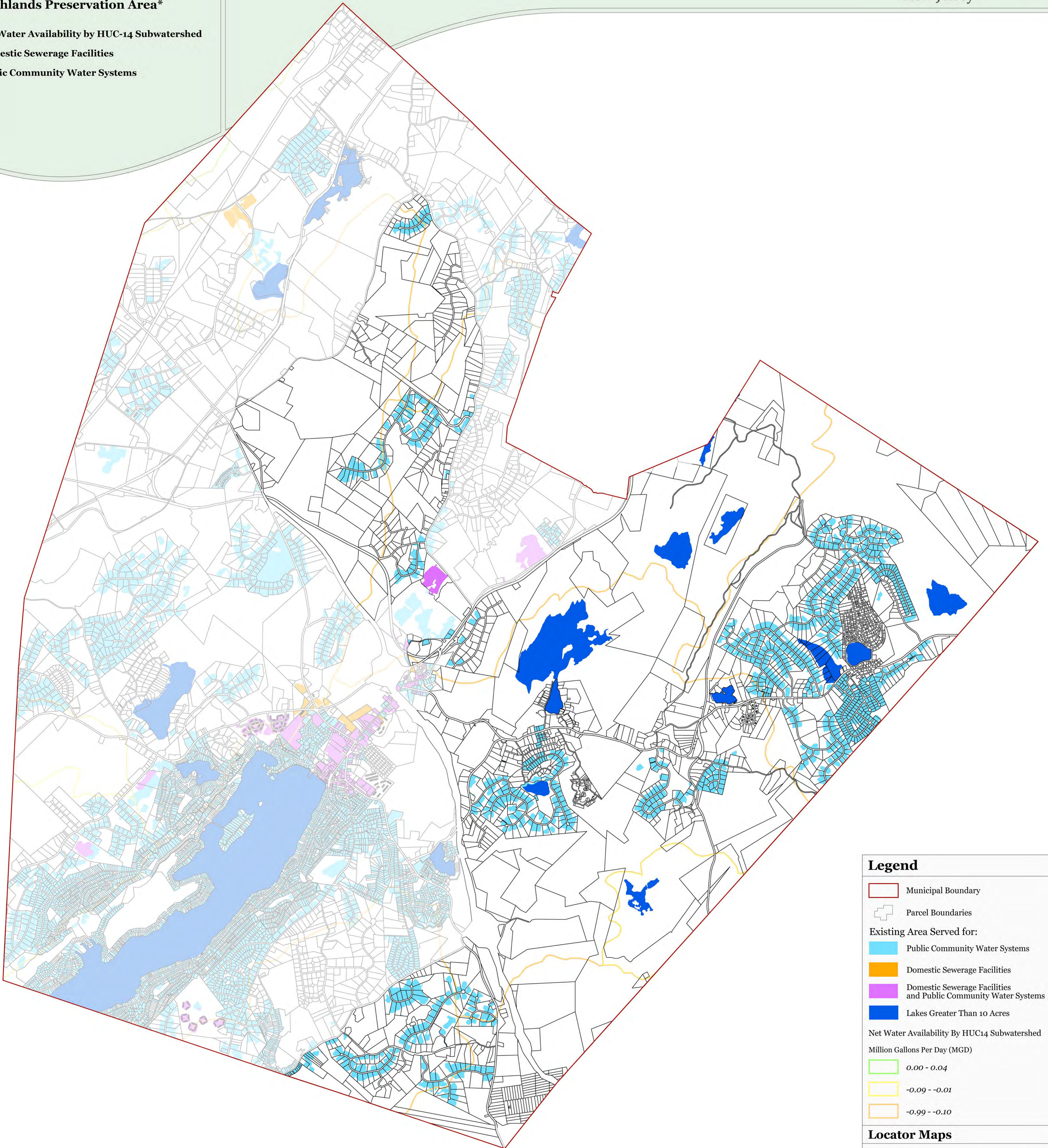
MAP PREPARED BY THE NEW JERSEY
HIGHLANDS COUNCIL, AUGUST 1, 2011

Exhibit 10:

TOWNSHIP OF SPARTA, SUSSEX COUNTY, NJ

**Township of Sparta
Highlands Preservation Area***

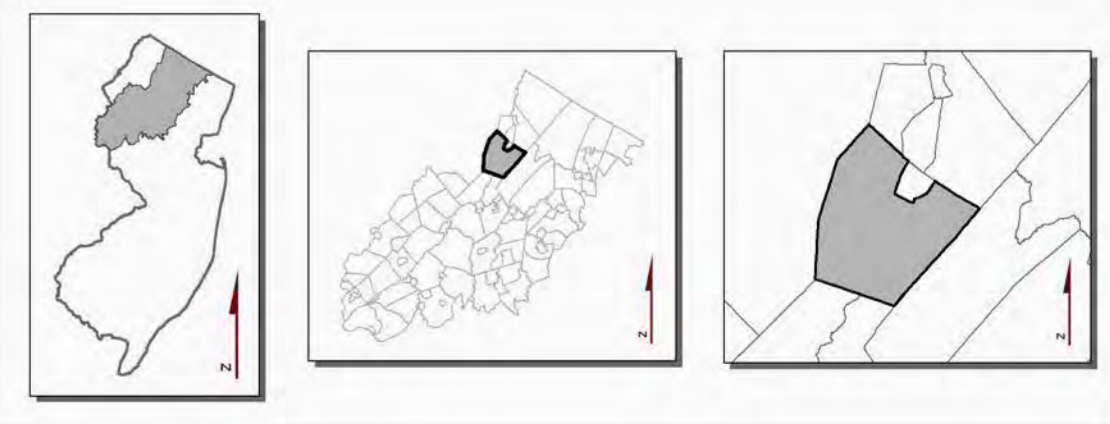
Net Water Availability by HUC-14 Subwatershed
Domestic Sewerage Facilities
Public Community Water Systems



Legend

- Municipal Boundary
- Parcel Boundaries
- Existing Area Served for:
 - Public Community Water Systems
 - Domestic Sewerage Facilities
 - Domestic Sewerage Facilities and Public Community Water Systems
 - Lakes Greater Than 10 Acres
- Net Water Availability By HUC14 Subwatershed
Million Gallons Per Day (MGD)
 - 0.00 - 0.04
 - 0.09 - -0.01
 - 0.99 - -0.10

Locator Maps



*Planning Area shown for informational purposes only.

