

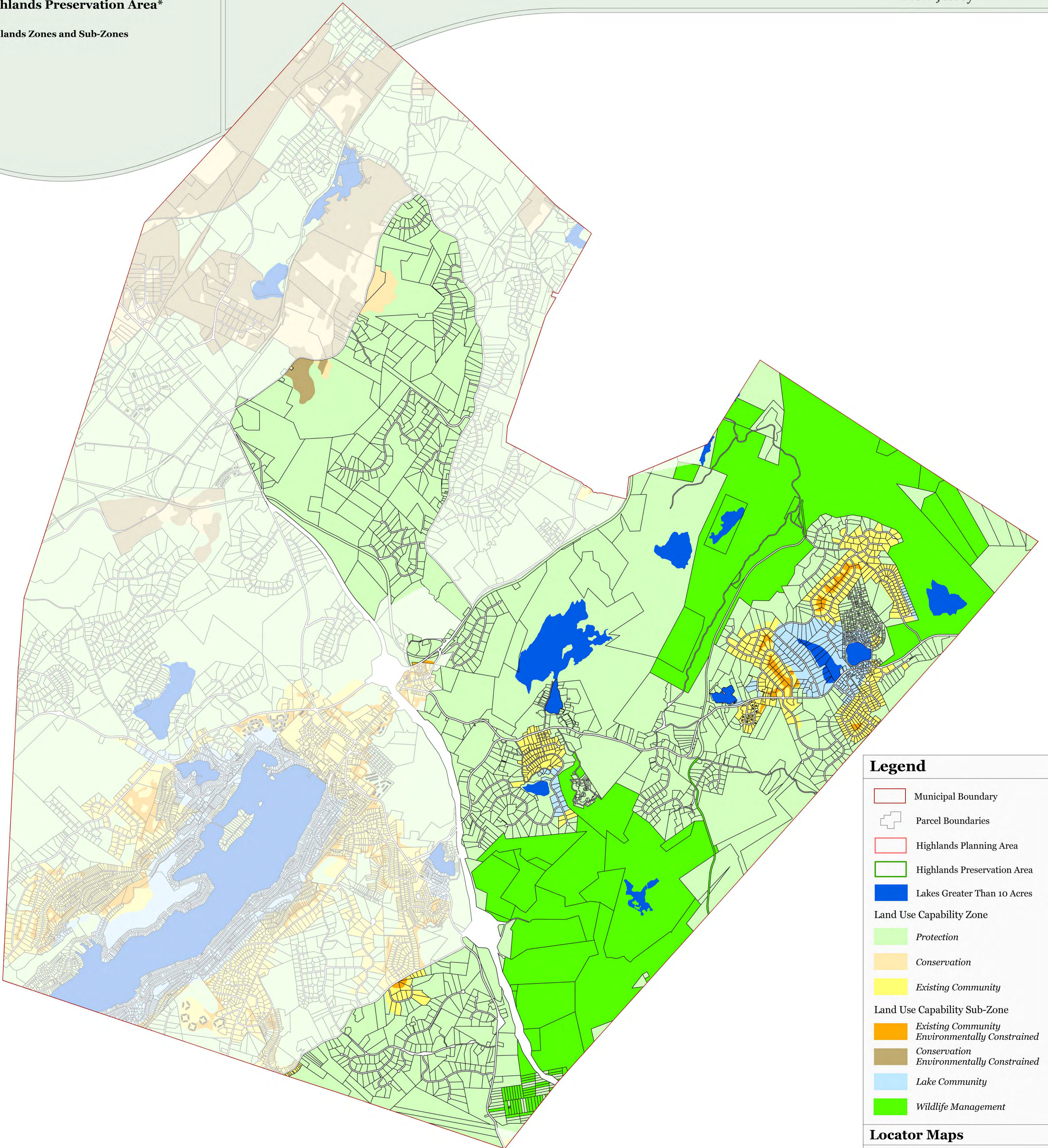
**Exhibit 1:**

**TOWNSHIP OF SPARTA, SUSSEX COUNTY, NJ**



Township of Sparta  
Highlands Preservation Area\*

Highlands Zones and Sub-Zones



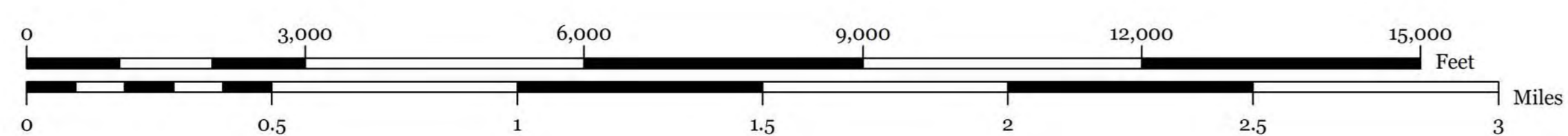
**Legend**

- Municipal Boundary
- Parcel Boundaries
- Highlands Planning Area
- Highlands Preservation Area
- Lakes Greater Than 10 Acres
- Land Use Capability Zone**
  - Protection
  - Conservation
  - Existing Community
- Land Use Capability Sub-Zone**
  - Existing Community Environmentally Constrained
  - Conservation Environmentally Constrained
  - Lake Community
  - Wildlife Management

**Locator Maps**



\*Planning Area shown for informational purposes only.



TOWNSHIP OF  
**SPARTA**  
SUSSEX COUNTY, N.J.  
MAP PREPARED BY THE NEW JERSEY  
HIGHLANDS COUNCIL, AUGUST 1, 2011

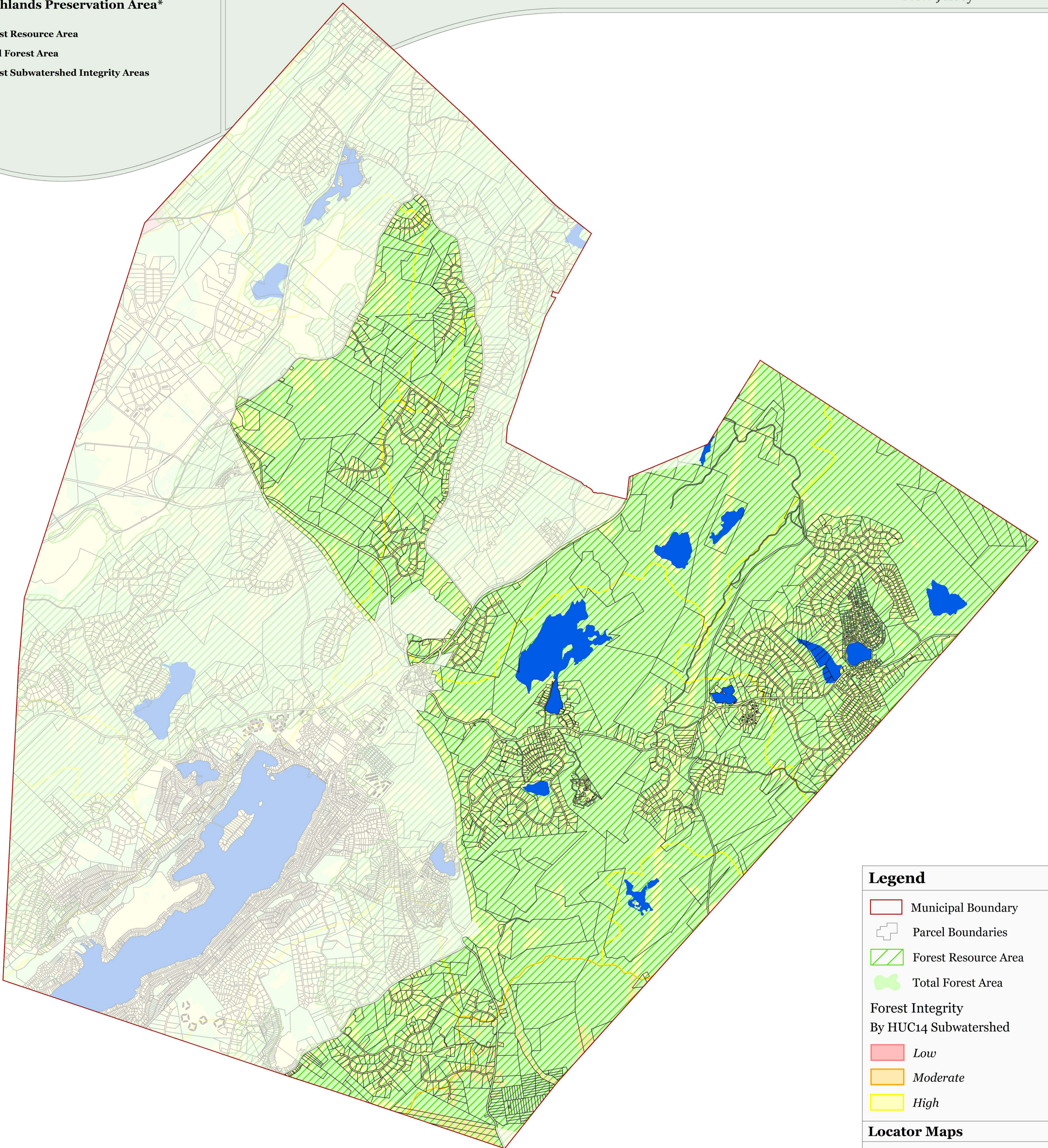
**Exhibit 2:**

**TOWNSHIP OF SPARTA, SUSSEX COUNTY, NJ**



**Township of Sparta  
Highlands Preservation Area\***

Forest Resource Area  
Total Forest Area  
Forest Subwatershed Integrity Areas



**Legend**

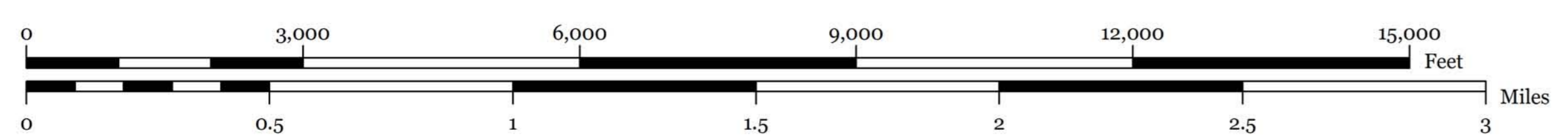
- Municipal Boundary
- Parcel Boundaries
- Forest Resource Area
- Total Forest Area

**Forest Integrity  
By HUC14 Subwatershed**

- Low
- Moderate
- High

**Locator Maps**

\*Planning Area shown for informational purposes only.



TOWNSHIP OF  
**SPARTA**  
SUSSEX COUNTY, N.J.  
MAP PREPARED BY THE NEW JERSEY  
HIGHLANDS COUNCIL, AUGUST 1, 2011

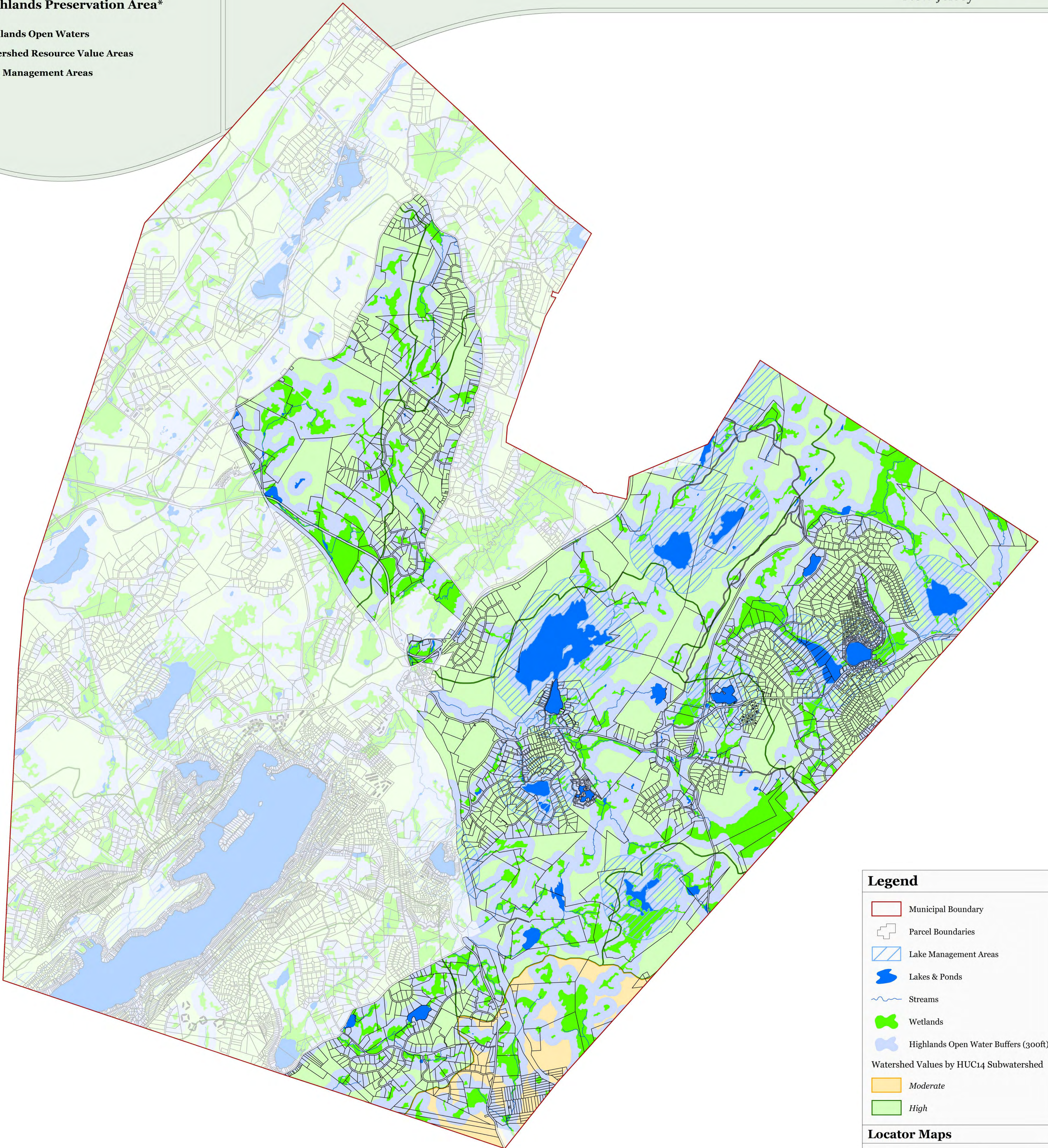
**Exhibit 3:**

**TOWNSHIP OF SPARTA, SUSSEX COUNTY, NJ**



Township of Sparta  
Highlands Preservation Area\*

Highlands Open Waters  
Watershed Resource Value Areas  
Lake Management Areas



**Legend**

- Municipal Boundary
- Parcel Boundaries
- Lake Management Areas
- Lakes & Ponds
- Streams
- Wetlands
- Highlands Open Water Buffers (300ft)

Watershed Values by HUC14 Subwatershed

- Moderate
- High

**Locator Maps**

\*Planning Area shown for informational purposes only.

Scale: 0 to 15,000 Feet / 0 to 3 Miles

TOWNSHIP OF  
**SPARTA**  
SUSSEX COUNTY, N.J.

MAP PREPARED BY THE NEW JERSEY  
HIGHLANDS COUNCIL, AUGUST 1, 2011

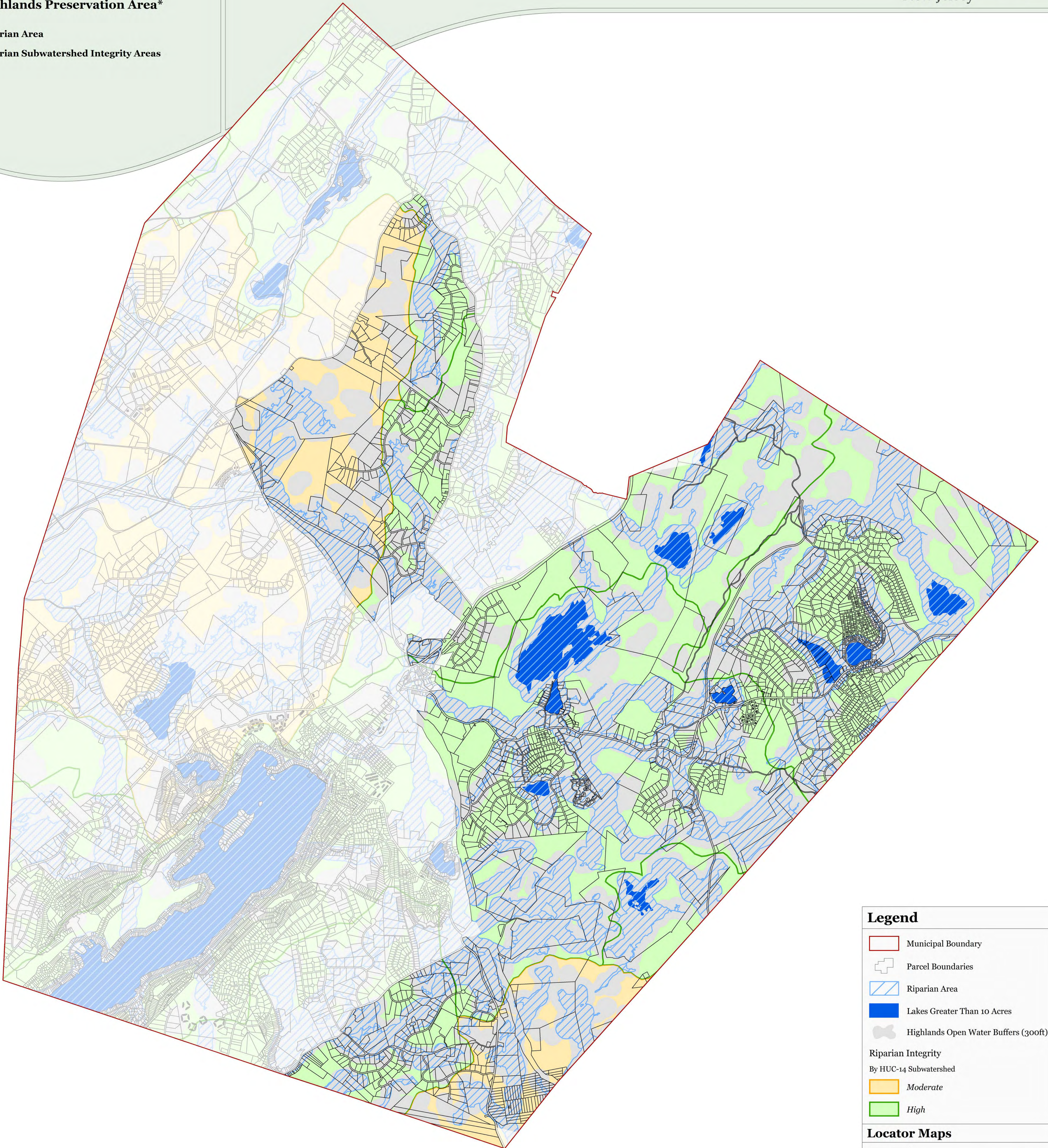
**Exhibit 4:**

**TOWNSHIP OF SPARTA, SUSSEX COUNTY, NJ**



**Township of Sparta  
Highlands Preservation Area\***

**Riparian Area  
Riparian Subwatershed Integrity Areas**



**Legend**

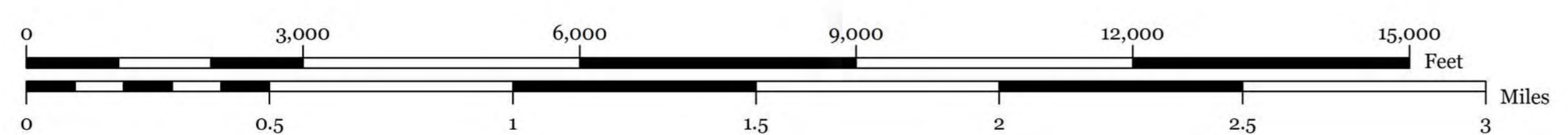
- Municipal Boundary
- Parcel Boundaries
- Riparian Area
- Lakes Greater Than 10 Acres
- Highlands Open Water Buffers (300ft)

**Riparian Integrity**  
By HUC-14 Subwatershed

- Moderate
- High

**Locator Maps**

\*Planning Area shown for informational purposes only.



TOWNSHIP OF  
**SPARTA**  
SUSSEX COUNTY, N.J.

MAP PREPARED BY THE NEW JERSEY  
HIGHLANDS COUNCIL, AUGUST 1, 2011

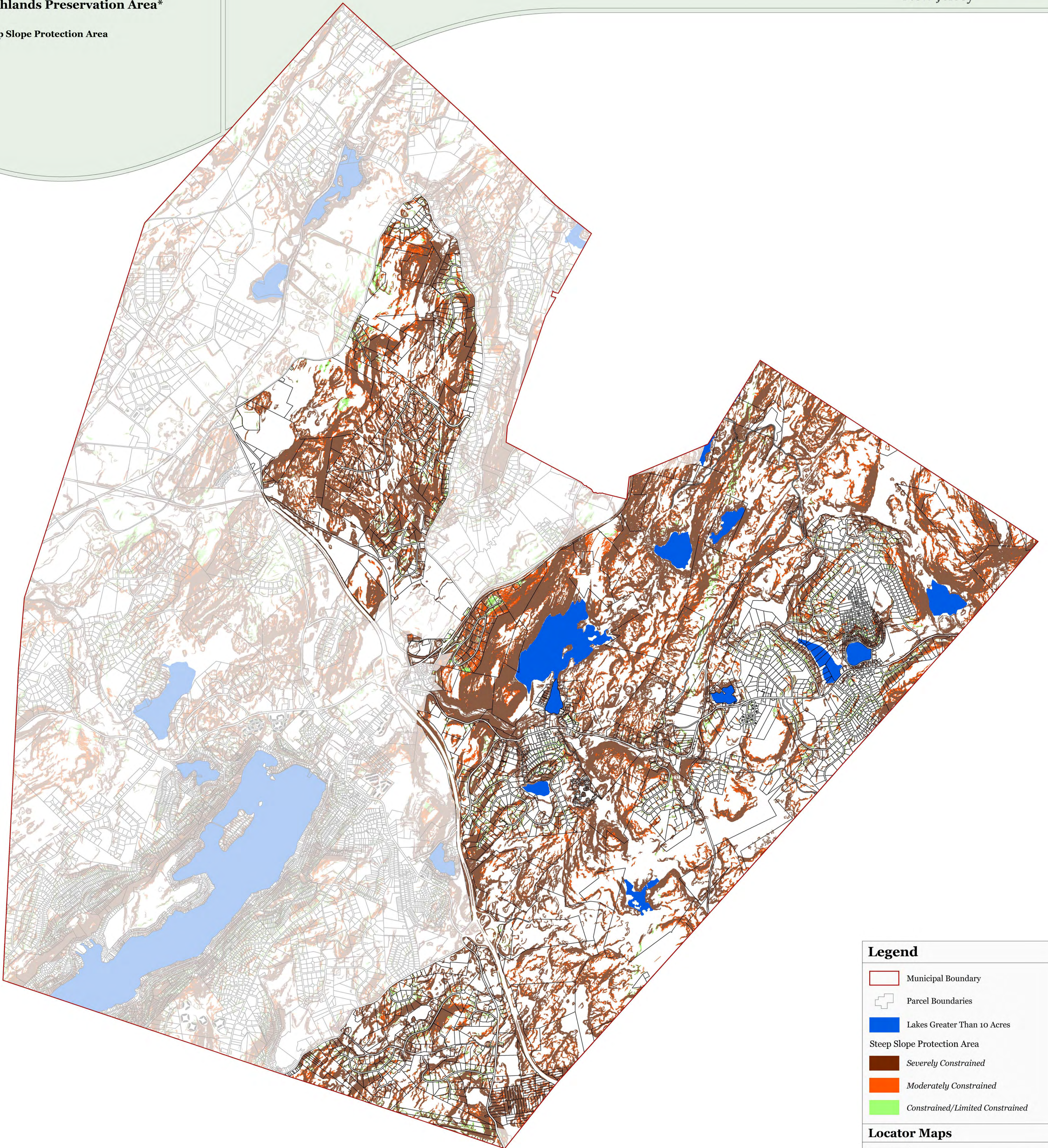
**Exhibit 5:**

**TOWNSHIP OF SPARTA, SUSSEX COUNTY, NJ**



Township of Sparta  
Highlands Preservation Area\*

Steep Slope Protection Area



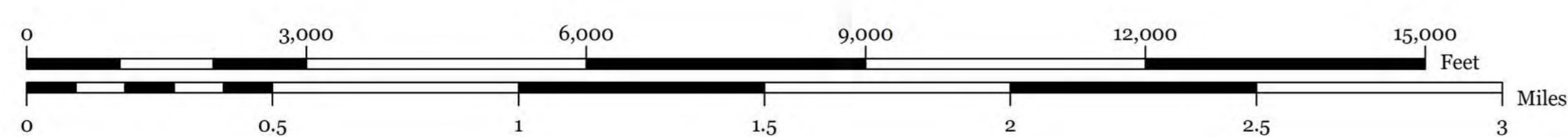
**Legend**

- Municipal Boundary
- Parcel Boundaries
- Lakes Greater Than 10 Acres
- Steep Slope Protection Area**
  - Severely Constrained
  - Moderately Constrained
  - Constrained/Limited Constrained

**Locator Maps**



\*Planning Area shown for informational purposes only.



TOWNSHIP OF  
**SPARTA**  
SUSSEX COUNTY, N.J.  
MAP PREPARED BY THE NEW JERSEY  
HIGHLANDS COUNCIL, AUGUST 1, 2011

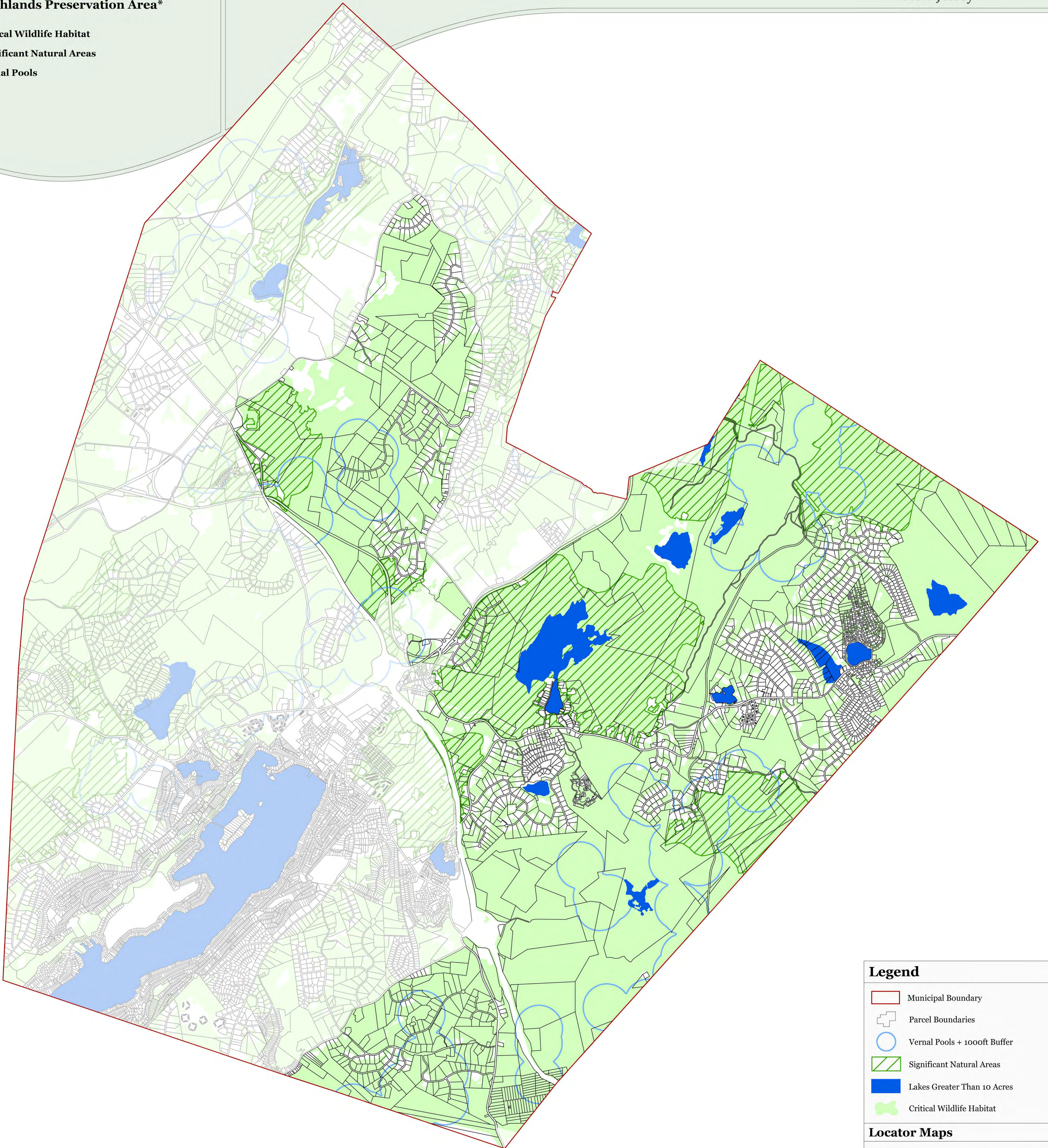
**Exhibit 6:**

**TOWNSHIP OF SPARTA, SUSSEX COUNTY, NJ**



**Township of Sparta  
Highlands Preservation Area\***

**Critical Wildlife Habitat  
Significant Natural Areas  
Vernal Pools**



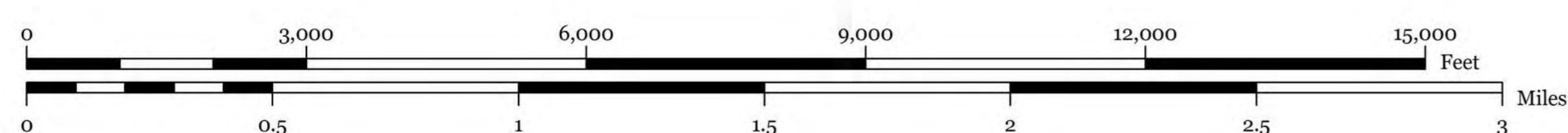
**Legend**

- Municipal Boundary
- Parcel Boundaries
- Vernal Pools + 1000ft Buffer
- Significant Natural Areas
- Lakes Greater Than 10 Acres
- Critical Wildlife Habitat

**Locator Maps**



\*Planning Area shown for informational purposes only.



TOWNSHIP OF  
**SPARTA**  
SUSSEX COUNTY, N.J.  
MAP PREPARED BY THE NEW JERSEY  
HIGHLANDS COUNCIL, AUGUST 1, 2011



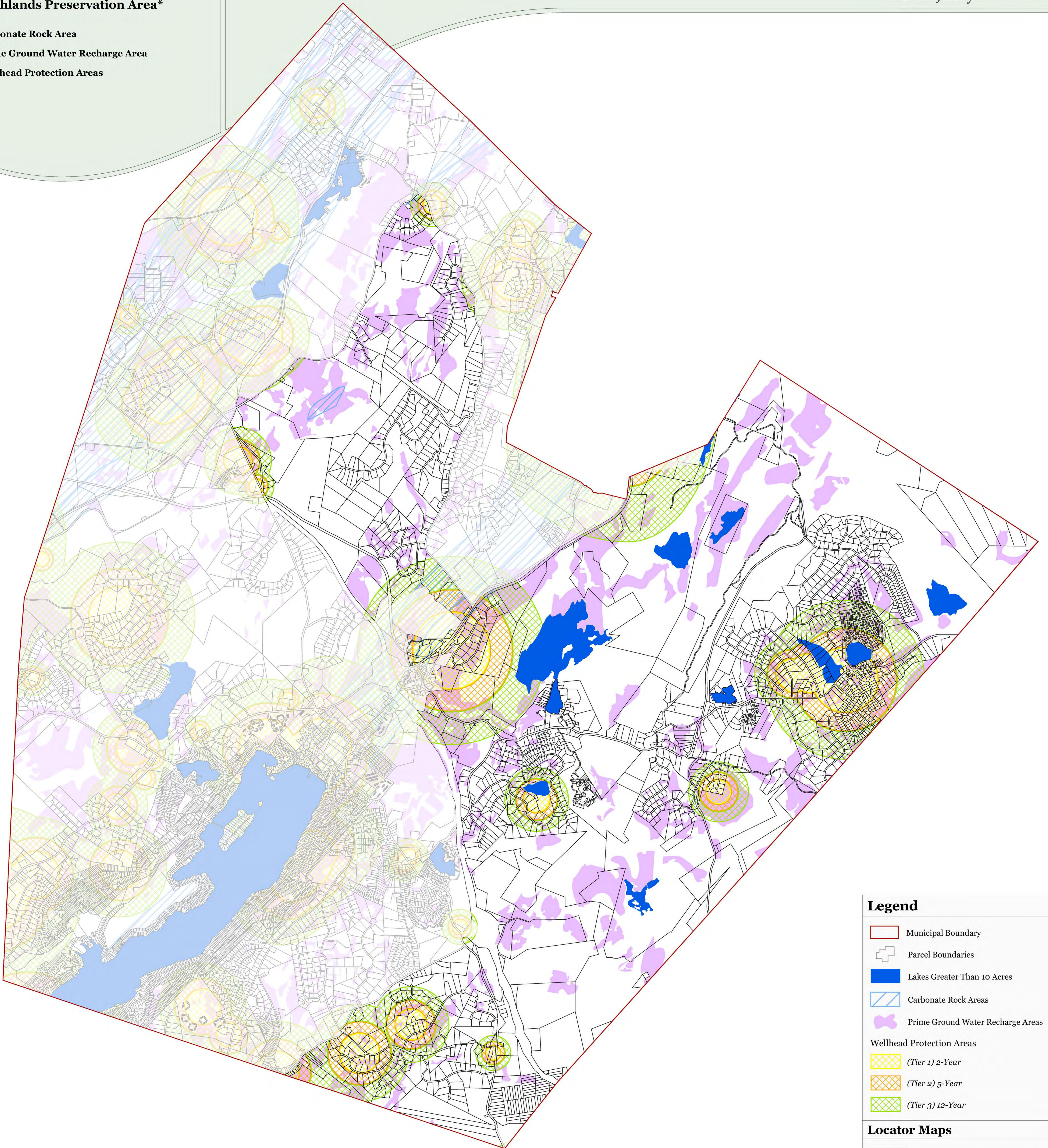
**Exhibit 7:**

**TOWNSHIP OF SPARTA, SUSSEX COUNTY, NJ**



**Township of Sparta  
Highlands Preservation Area\***

**Carbonate Rock Area  
Prime Ground Water Recharge Area  
Wellhead Protection Areas**

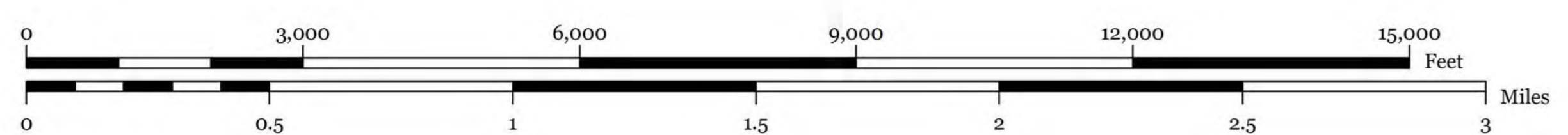


**Legend**

- Municipal Boundary
- Parcel Boundaries
- Lakes Greater Than 10 Acres
- Carbonate Rock Areas
- Prime Ground Water Recharge Areas
- Wellhead Protection Areas
  - (Tier 1) 2-Year
  - (Tier 2) 5-Year
  - (Tier 3) 12-Year

**Locator Maps**

\*Planning Area shown for informational purposes only.



TOWNSHIP OF  
**SPARTA**  
SUSSEX COUNTY, N.J.  
MAP PREPARED BY THE NEW JERSEY  
HIGHLANDS COUNCIL, AUGUST 1, 2011

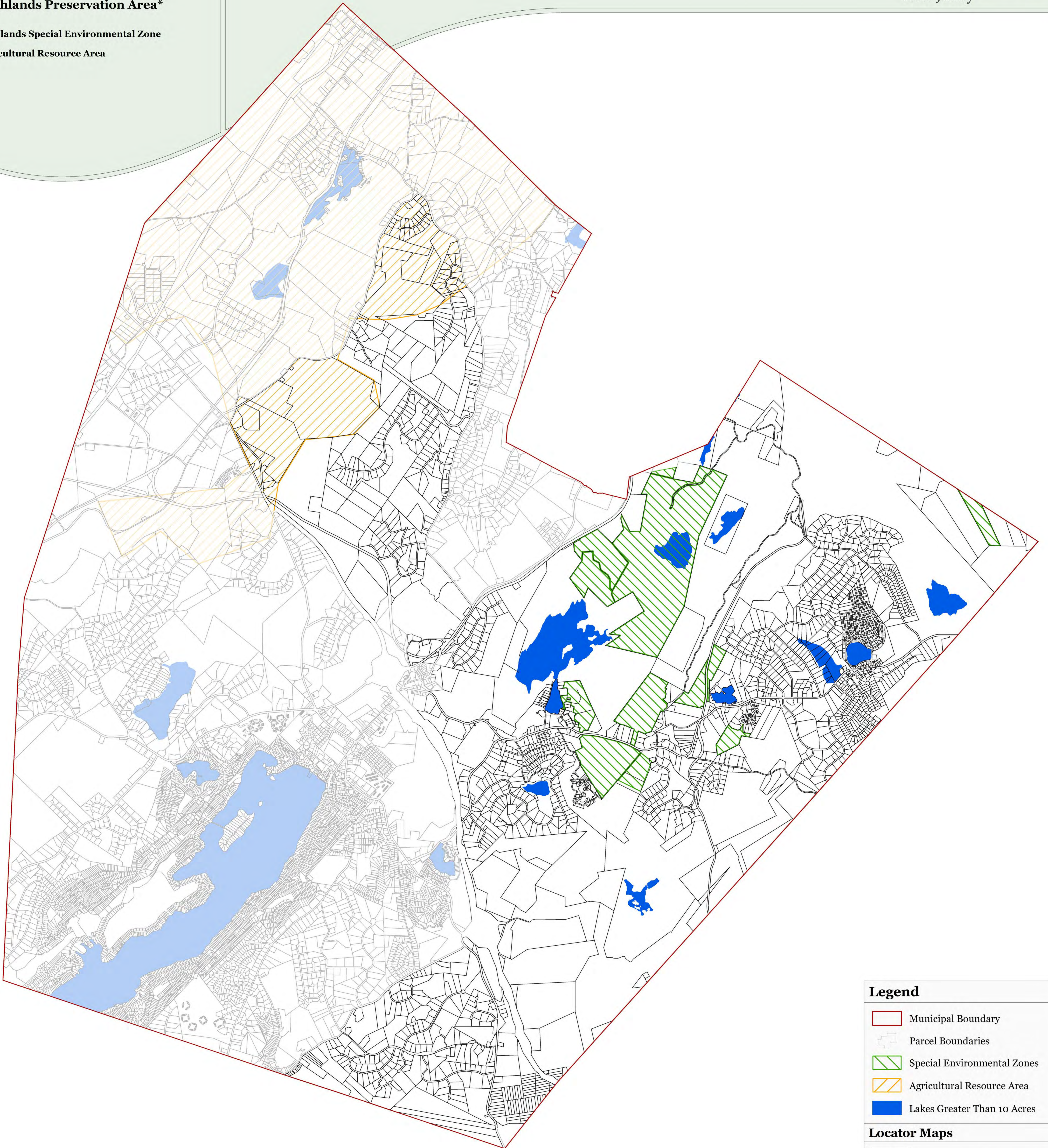
**Exhibit 8:**

**TOWNSHIP OF SPARTA, SUSSEX COUNTY, NJ**



Township of Sparta  
Highlands Preservation Area\*

Highlands Special Environmental Zone  
Agricultural Resource Area



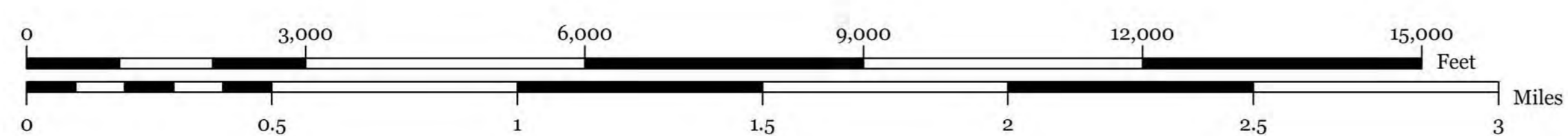
**Legend**

- Municipal Boundary
- Parcel Boundaries
- Special Environmental Zones
- Agricultural Resource Area
- Lakes Greater Than 10 Acres

**Locator Maps**



\*Planning Area shown for informational purposes only.



TOWNSHIP OF  
**SPARTA**  
SUSSEX COUNTY, N.J.

MAP PREPARED BY THE NEW JERSEY  
HIGHLANDS COUNCIL, AUGUST 1, 2011





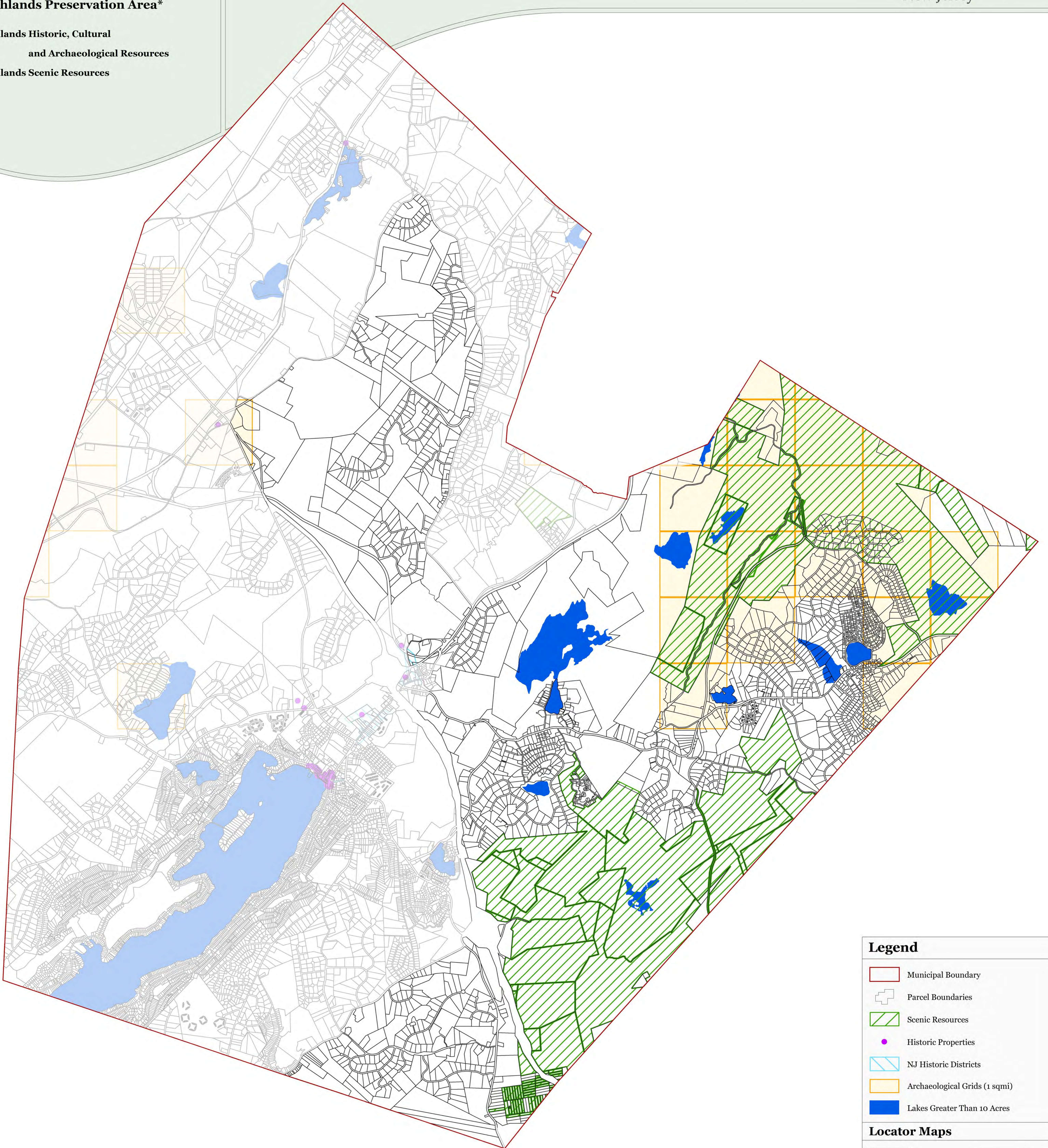
**Exhibit 9:**

**TOWNSHIP OF SPARTA, SUSSEX COUNTY, NJ**



**Township of Sparta  
Highlands Preservation Area\***

**Highlands Historic, Cultural  
and Archaeological Resources  
Highlands Scenic Resources**

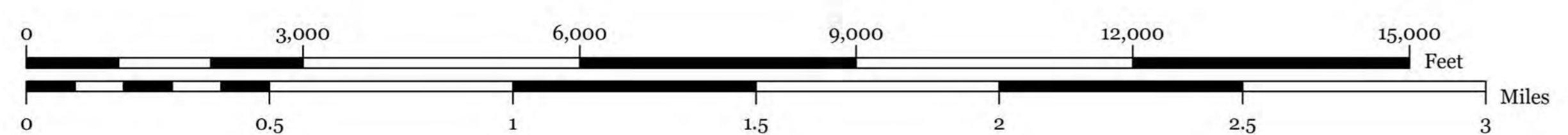


**Legend**

- Municipal Boundary
- Parcel Boundaries
- Scenic Resources
- Historic Properties
- NJ Historic Districts
- Archaeological Grids (1 sqmi)
- Lakes Greater Than 10 Acres

**Locator Maps**

\*Planning Area shown for informational purposes only.



**TOWNSHIP OF SPARTA**  
SUSSEX COUNTY, N.J.  
MAP PREPARED BY THE NEW JERSEY  
HIGHLANDS COUNCIL, AUGUST 1, 2011

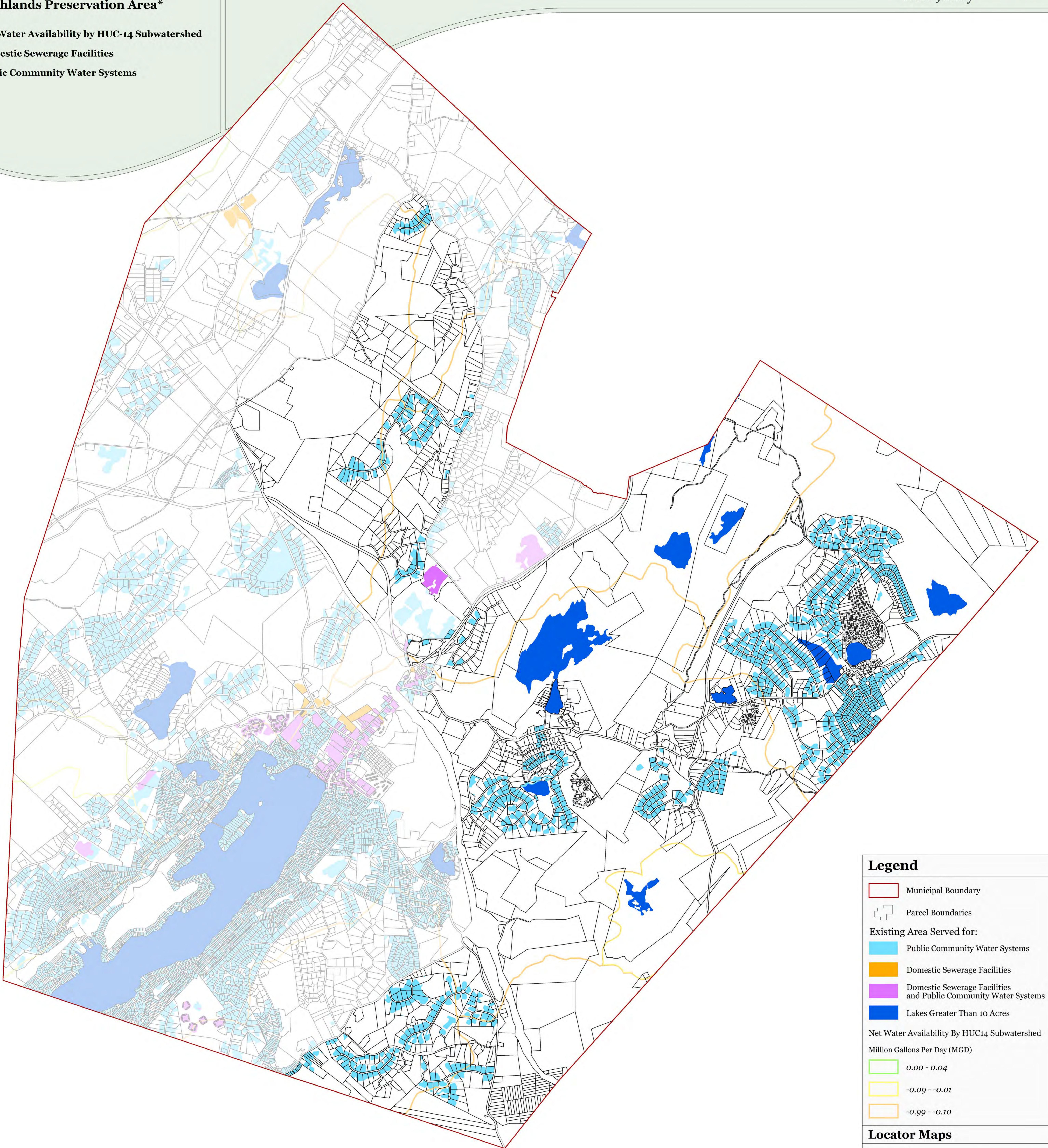
**Exhibit 10:**

**TOWNSHIP OF SPARTA, SUSSEX COUNTY, NJ**



**Township of Sparta  
Highlands Preservation Area\***

Net Water Availability by HUC-14 Subwatershed  
Domestic Sewerage Facilities  
Public Community Water Systems

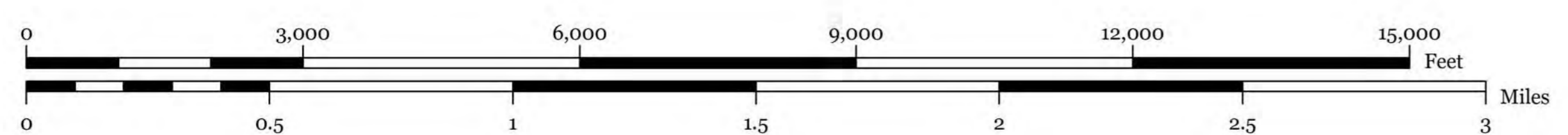


**Legend**

- Municipal Boundary
- Parcel Boundaries
- Existing Area Served for:
  - Public Community Water Systems
  - Domestic Sewerage Facilities
  - Domestic Sewerage Facilities and Public Community Water Systems
  - Lakes Greater Than 10 Acres
- Net Water Availability By HUC14 Subwatershed  
Million Gallons Per Day (MGD)
  - 0.00 - 0.04
  - 0.09 - -0.01
  - 0.99 - -0.10

**Locator Maps**

\*Planning Area shown for informational purposes only.



TOWNSHIP OF  
**SPARTA**  
SUSSEX COUNTY, N.J.  
MAP PREPARED BY THE NEW JERSEY  
HIGHLANDS COUNCIL, AUGUST 1, 2011